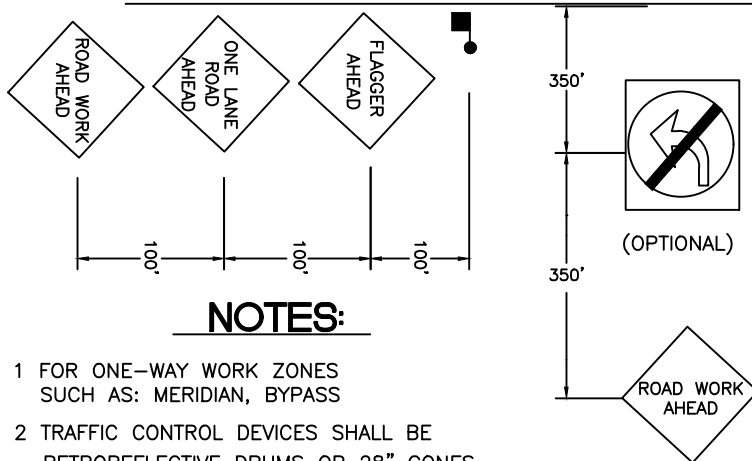
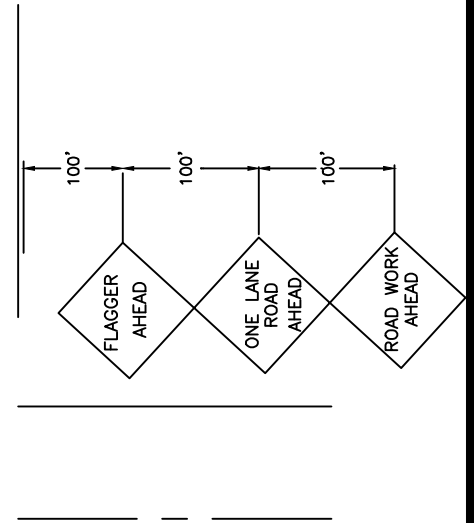
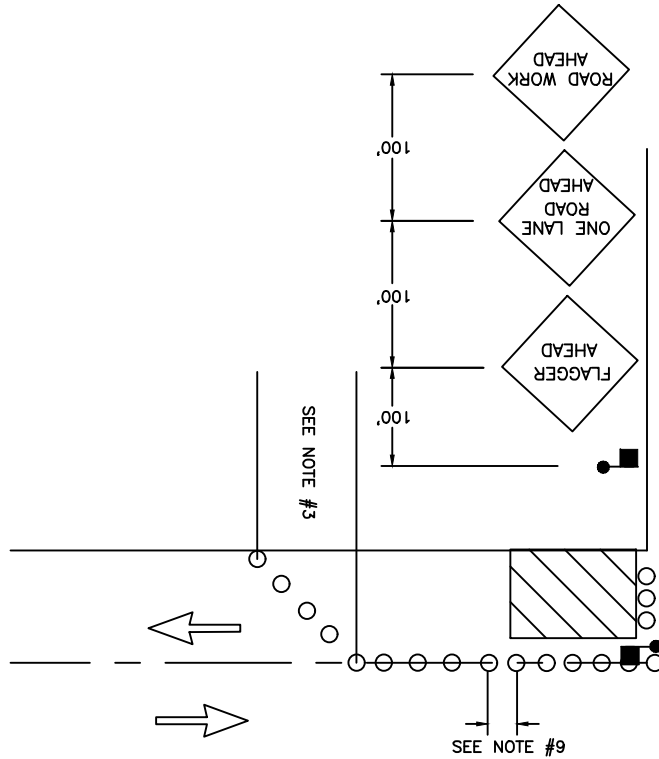
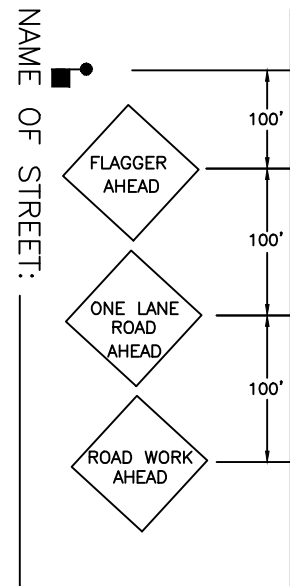


NAME OF STREET: _____



NOTES:

- 1 FOR ONE-WAY WORK ZONES SUCH AS: MERIDIAN, BYPASS
- 2 TRAFFIC CONTROL DEVICES SHALL BE RETROREFLECTIVE DRUMS OR 28" CONES
- 3 TAPER LENGTH 100' MAXIMUM
- 4 DISTANCE BETWEEN SIGNS IS MANDATORY UNLESS FIELD CONDITIONS DETERMINE OTHERWISE
- 5 SIGN SPACING SHALL BE 100 FEET WHEN SPEED LIMIT IS 30 MPH OR LESS
- 6 SIGN SPACING SHALL BE 350 FEET WHEN SPEED LIMIT IS GREATER THAN 30 MPH
- 7 CALL COMM CENTER DAY OF CLOSURE 841-5431
 - 7.1 CLOSURE FOR WEEKDAYS ONLY
 - 7.2 TIMES: 9:00 AM TO 3:00 PM
- 8 IF LEFT TURN MOVEMENT IS PROHIBITED, PROVIDE DETOUR ROUTE
- 9 DISTANCE BETWEEN CONES EQUALS SPEED LIMIT IN UNITS OF FEET



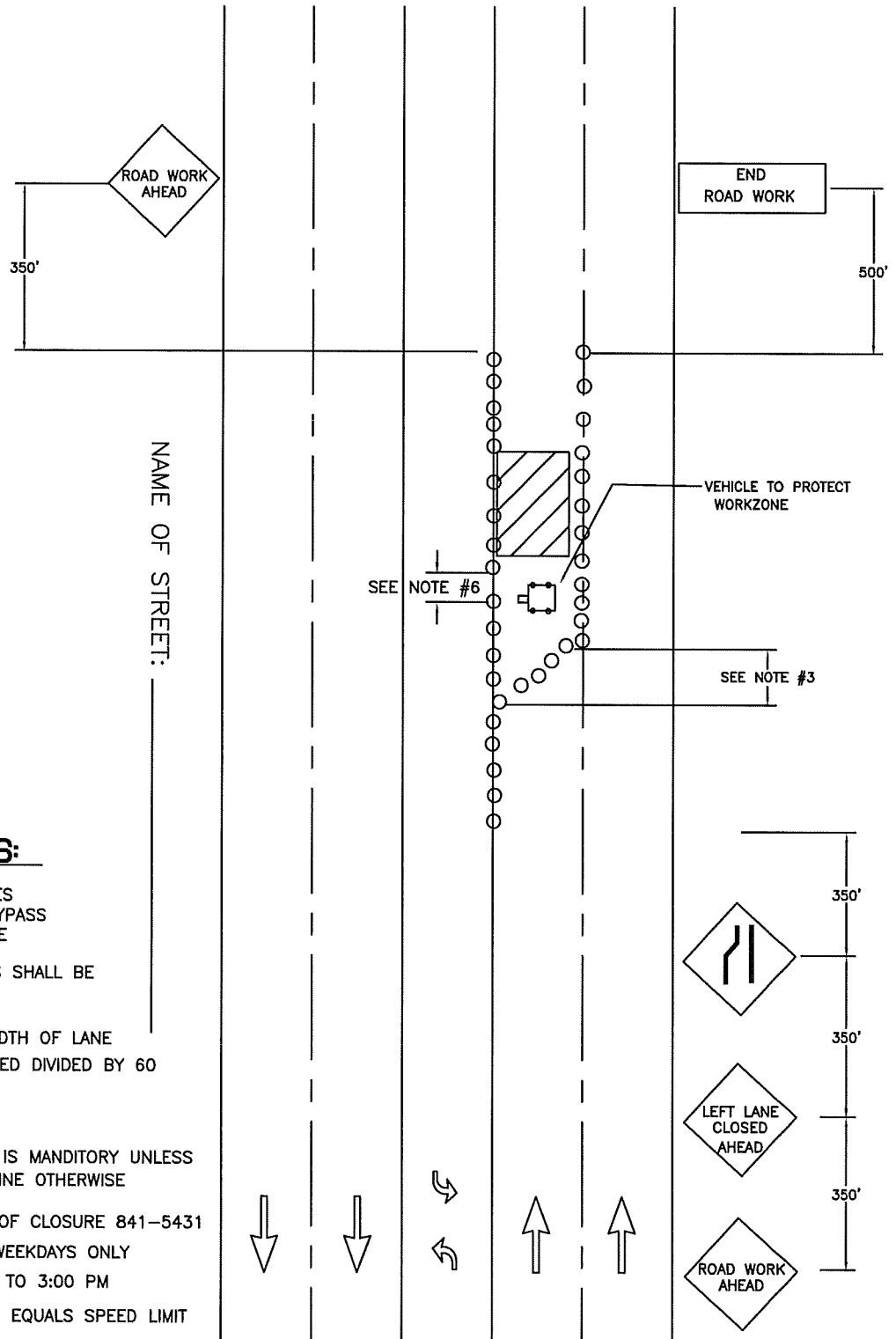
NAME OF STREET: _____



**CITY OF
PUYALLUP
TRAFFIC
ENGINEERING
DIVISION**

CLOSURE AT INTERSECTION

DRAWN J. HUNTER	PLOTTING SCALE NTS/ 1=1	DATE APPROVED 04-03	REVISED 07-18-2023	TCP STANDARD
FILE NAME I:\DRAWINGS\PUBLIC WORKS\TRAFFIC\TCP	CHECKED BY M. FORD	REVISED BY M. HUTCHENS	NO. 1	

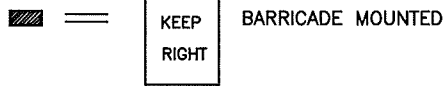


**CITY OF
PUYALLUP
TRAFFIC
ENGINEERING
DIVISION**

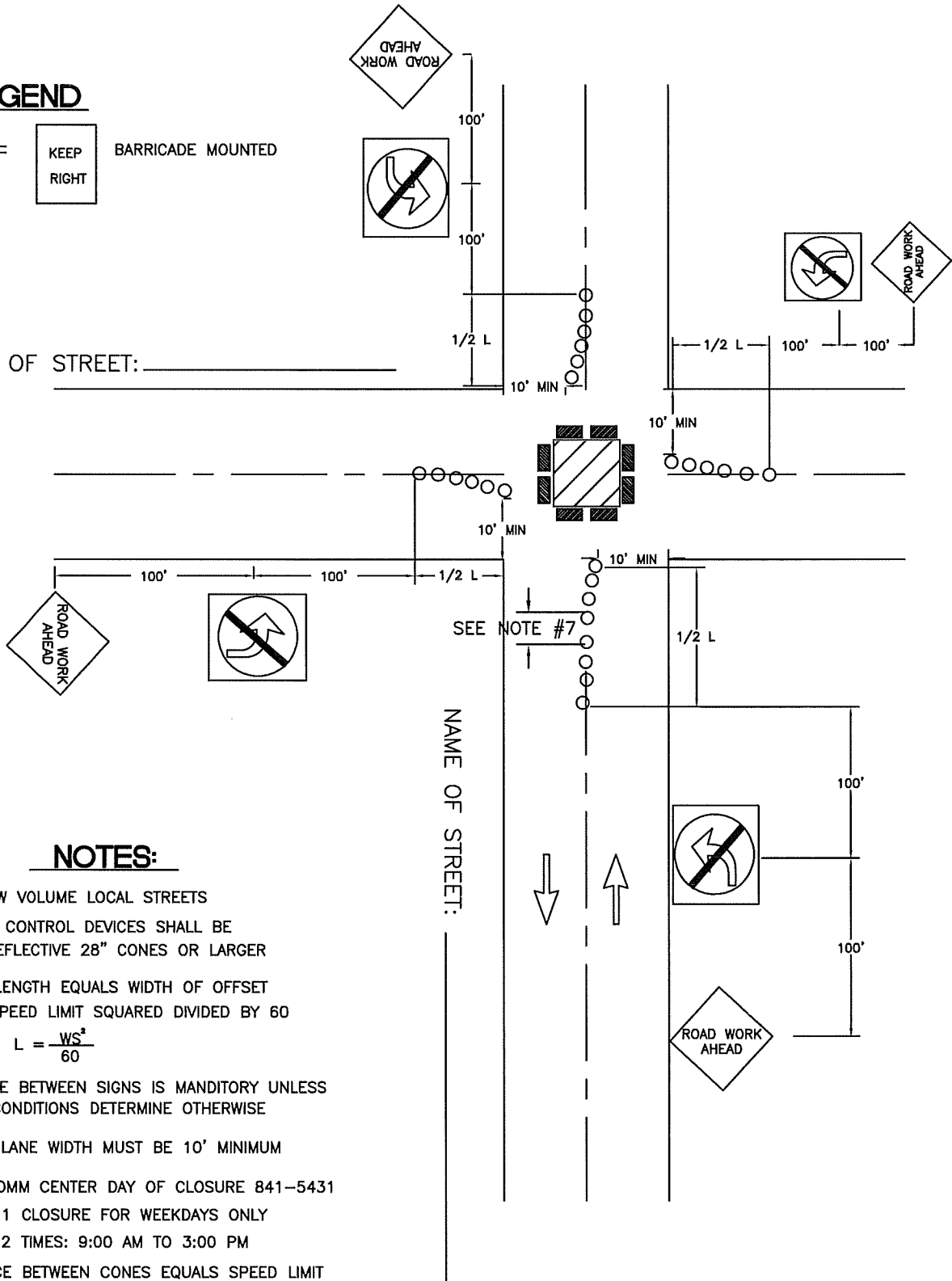
INSIDE LANE CLOSURE ON MULTILANE STREET

DRAWN J. HUNTER	PLOTTING SCALE NTS/ 1=1	DATE APPROVED 04-03	REVISED 09-30-09	TCP STANDARD
FILE NAME I:\DRAWINGS\PUBLIC WORKS\TRAFFIC\TCP	CHECKED BY M. FORD	REVISED BY S. TANDLE	NO. 2	

LEGEND



NAME OF STREET: _____



NOTES:

- 1 FOR LOW VOLUME LOCAL STREETS
- 2 TRAFFIC CONTROL DEVICES SHALL BE RETROREFLECTIVE 28" CONES OR LARGER
- 3 TAPER LENGTH EQUALS WIDTH OF OFFSET
TIMES SPEED LIMIT SQUARED DIVIDED BY 60
$$L = \frac{WS^2}{60}$$
- 4 DISTANCE BETWEEN SIGNS IS MANDATORY UNLESS FIELD CONDITIONS DETERMINE OTHERWISE
- 5 TRAVEL LANE WIDTH MUST BE 10' MINIMUM
- 6 CALL COMM CENTER DAY OF CLOSURE 841-5431
 - 6.1 CLOSURE FOR WEEKDAYS ONLY
 - 6.2 TIMES: 9:00 AM TO 3:00 PM
- 7 DISTANCE BETWEEN CONES EQUALS SPEED LIMIT IN UNITS OF FEET



**CITY OF
PUYALLUP
TRAFFIC
ENGINEERING
DIVISION**

INTERSECTION CENTER CLOSURE LOW VOLUME

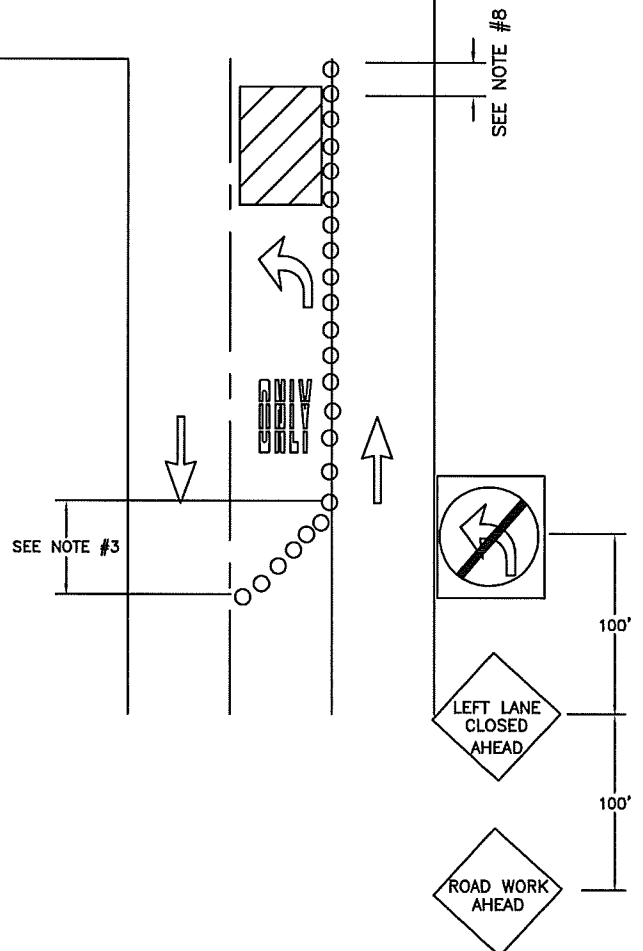
DRAWN J. HUNTER	PLOTTING SCALE NTS/ 1=1	DATE APPROVED 04-03	REVISED 09-30-09	TCP STANDARD
FILE NAME I:\DRAWINGS\PUBLIC WORKS\TRAFFIC\TCP	CHECKED BY M. FORD	REVISED BY S. TANDLE	NO. 3	

NAME OF STREET: _____

NAME OF STREET: _____

NOTES:

- 1 FOR ARTERIAL/COLLECTOR WORK ZONES
- 2 TRAFFIC CONTROL DEVICES SHALL BE RETROREFLECTIVE DRUMS FOR ARTERIALS AND 28" CONES FOR COLLECTORS
- 3 TAPER LENGTH EQUALS WIDTH OF LANE
TIMES SPEED LIMIT SQUARED DIVIDED BY 60
$$L = \frac{WS^2}{60}$$
- 4 DISTANCE BETWEEN SIGNS IS MANDATORY UNLESS FIELD CONDITIONS DETERMINE OTHERWISE
- 5 SIGN SPACING SHALL BE 350 FEET WHEN SPEED LIMIT IS GREATER THAN 30 MPH
- 6 SIGN SPACING SHALL BE 100 FEET WHEN SPEED LIMIT IS 30 MPH OR LESS
- 7 CALL COMM CENTER DAY OF CLOSURE 841-5431
7.1 CLOSURE FOR WEEKDAYS ONLY
7.2 TIMES: 9:00 AM TO 3:00 PM
- 8 DISTANCE BETWEEN CONES EQUALS SPEED LIMIT IN UNITS OF FEET



**CITY OF
PUYALLUP
TRAFFIC
ENGINEERING
DIVISION**

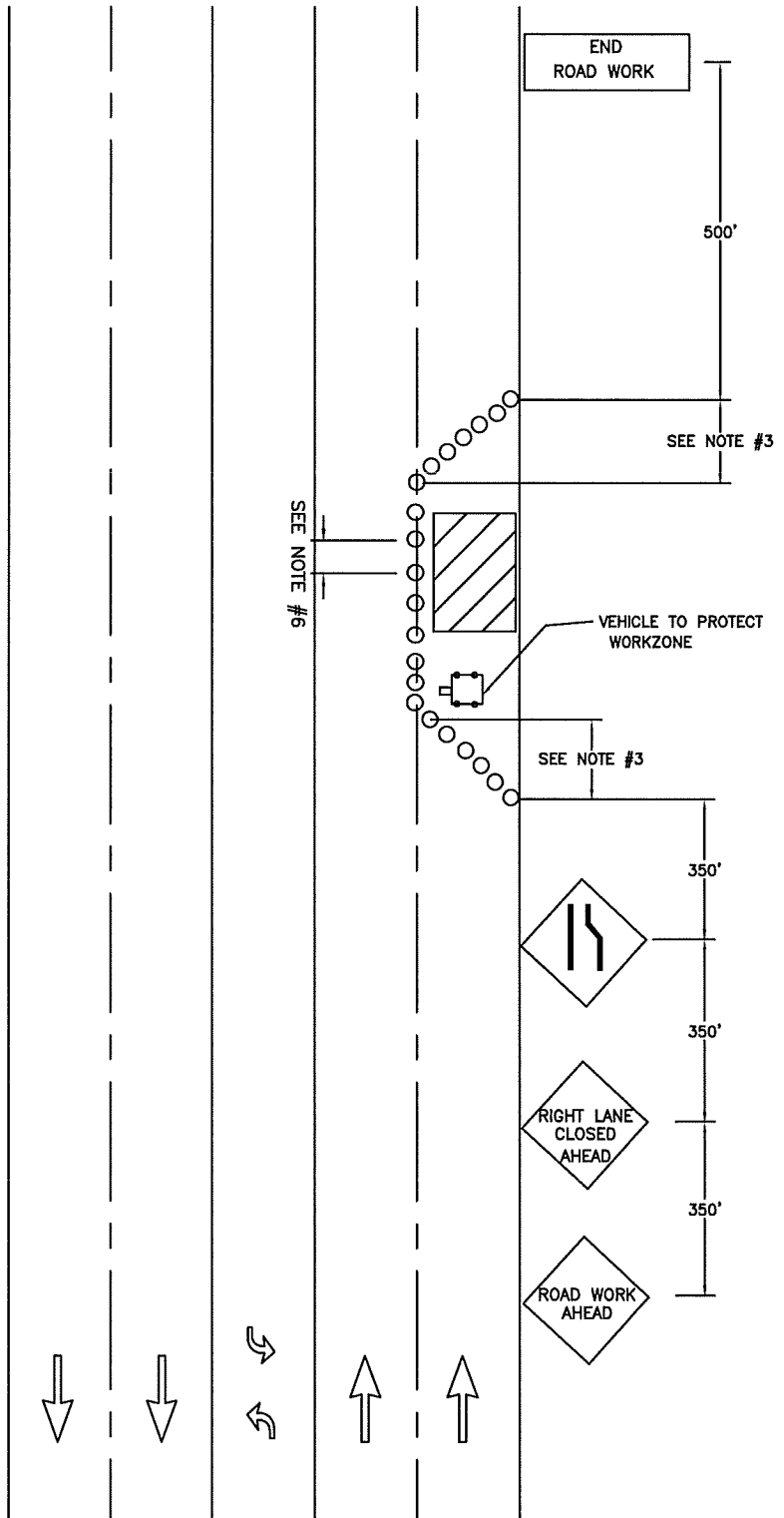
LEFT TURN POCKET CLOSURE

DRAWN J. HUNTER	PLOTTING SCALE NTS/ 1=1	DATE APPROVED 04-03	REVISED 09-30-09	TCP STANDARD
FILE NAME I:\DRAWINGS\PUBLIC WORKS\TRAFFIC\TCP	CHECKED BY M. FORD	REVISED BY S. TANDLE	NO. 4	

NAME OF STREET: _____

NOTES:

- 1 FOR ARTERIAL WORK ZONES
SUCH AS: S. MERIDIAN, BYPASS
RIVER ROAD, 39TH AVE SE
- 2 TRAFFIC CONTROL DEVICES SHALL BE
RETROREFLECTIVE DRUMS
- 3 TAPER LENGTH EQUALS WIDTH OF LANE
TIMES SPEED LIMIT SQUARED DIVIDED BY 60
$$L = \frac{WS^2}{60}$$
- 4 DISTANCE BETWEEN SIGNS IS MANDATORY UNLESS
FIELD CONDITIONS DETERMINE OTHERWISE
- 5 CALL COMM CENTER DAY OF CLOSURE 841-5431
5.1 CLOSURE FOR WEEKDAYS ONLY
5.2 TIMES: 9:00 AM TO 3:00 PM
- 6 DISTANCE BETWEEN CONES EQUALS SPEED LIMIT
IN UNITS OF FEET



**CITY OF
PUYALLUP
TRAFFIC
ENGINEERING
DIVISION**

OUTSIDE LANE CLOSURE ON MULTILANE STREET

DRAWN J. HUNTER	PLOTTING SCALE NTS/ 1=1	DATE APPROVED 04-03	REVISED 09-30-09	TCP STANDARD
FILE NAME I:\DRAWINGS\PUBLIC WORKS\TRAFFIC\TCP	CHECKED BY M. FORD	REVISED BY S. TANDLE	NO. 5	

NAME OF STREET: _____

NAME OF STREET: _____

NOTES:

- 1 GIVE 24 HR NOTICE TO BUSINESS/RESIDENTS IMPACTED BY CLOSURE
- 2 "NO PARKING" EASELS MAY BE REQUIRED IN IMMEDIATE AREA OF WORK ZONE
- 3 CALL COMM CENTER DAY OF CLOSURE 841-5431
- 4 KEEP CLOSURE TO MINIMUM AMOUNT OF TIME AS POSSIBLE TO COMPLETE JOB
- 5 FLAGGERS MAYBE NEEDED TO ASSIST W/ CROSSING PEDESTRIANS NEAR SCHOOLS OR HIGH PEDESTRIAN USE AREAS



SIDEWALK CLOSED
←
CROSS HERE

SIDEWALK
CLOSED

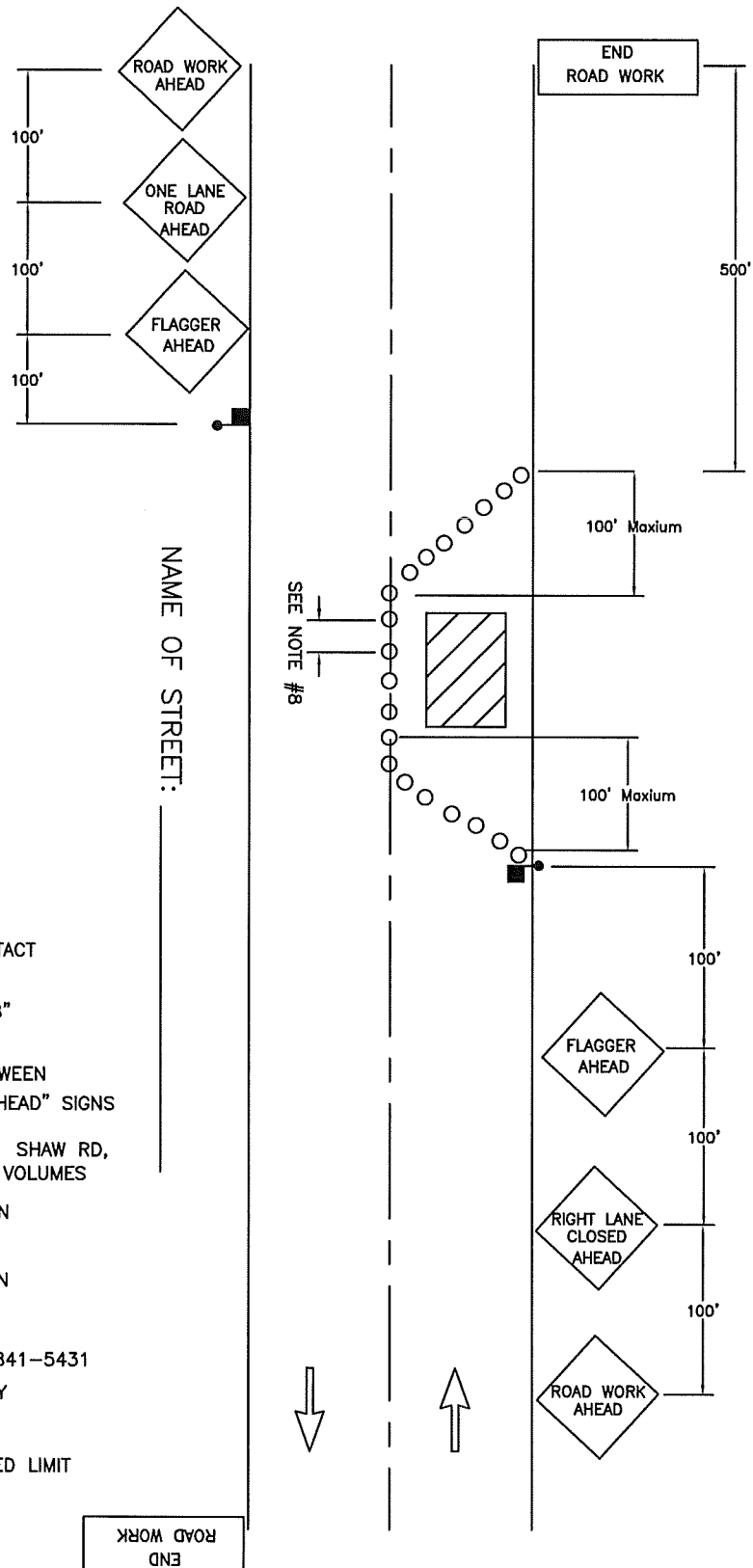
SIDEWALK CLOSED
←
CROSS HERE



**CITY OF
PUYALLUP
TRAFFIC
ENGINEERING
DIVISION**

SIDEWALK CLOSURE

DRAWN J. HUNTER	PLOTTING SCALE NTS/ 1=1	DATE APPROVED 04-03	REVISED	TCP STANDARD
FILE NAME I:\DRAWINGS\PUBLIC WORKS\TRAFFIC\TCP	CHECKED BY M. FORD	REVISD BY	NO. 6	



NOTES:

- 1 FOR TWO-WAY TRAFFIC WORK ZONES
- 2 FLAGGERS SHALL REMAIN IN RADIO CONTACT AT ALL TIMES
- 3 TRAFFIC CONTROL DEVICES SHALL BE 28" RETROREFLECTIVE CONES
- 4 USE "BE PREPARED TO STOP" SIGN BETWEEN "FLAGGER AHEAD" AND "LANE CLOSED AHEAD" SIGNS ON HIGH VOLUME ROADS, SUCH AS:
43RD AVE SE, 9TH ST SW, 5TH ST SW, SHAW RD, AND OTHER STREETS WITH COMPARABLE VOLUMES
- 5 SIGN SPACING SHALL BE 350 FEET WHEN SPEED LIMIT IS GREATER THAN 30 MPH
- 6 SIGN SPACING SHALL BE 100 FEET WHEN SPEED LIMIT IS 30 MPH OR LESS
- 7 CALL COMM CENTER DAY OF CLOSURE 841-5431
 - 7.1 CLOSURE FOR WEEKDAYS ONLY
 - 7.2 TIMES: 9:00 AM TO 3:00 PM
- 8 DISTANCE BETWEEN CONES EQUALS SPEED LIMIT IN UNITS OF FEET

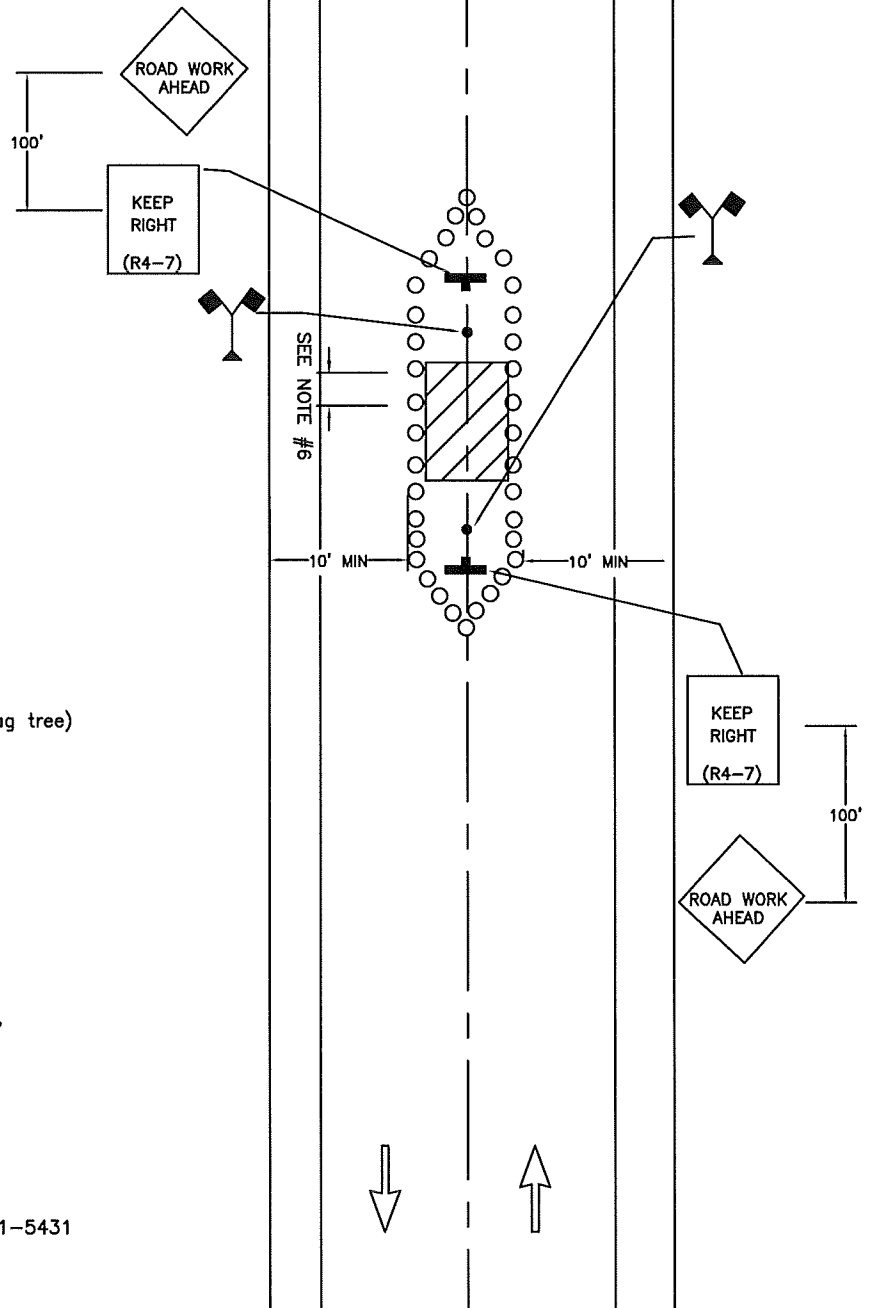


**CITY OF
PUYALLUP
TRAFFIC
ENGINEERING
DIVISION**

LANE CLOSURE ON TWO-LANE ROAD USING FLAGGERS

DRAWN J. HUNTER	PLOTTING SCALE NTS/ 1=1	DATE APPROVED 04-03	REVISED 09-30-09	TCP STANDARD
FILE NAME I:\DRAWINGS\PUBLIC WORKS\TRAFFIC\TCP	CHECKED BY M. FORD	REVISED BY S. TANDLE	NO. 7	

NAME OF STREET: _____



LEGEND



High-level warning device (Flag tree)

NOTES:

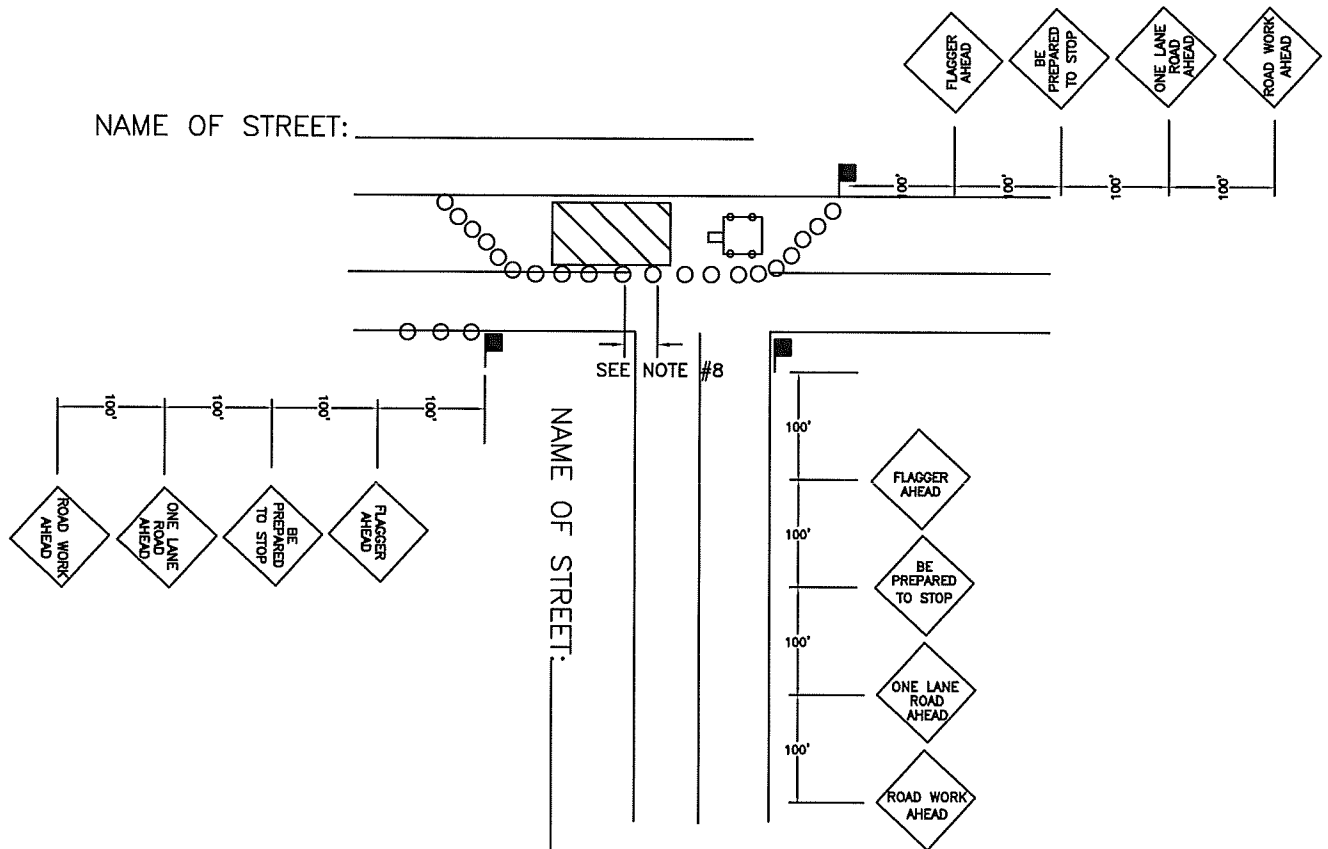
- 1 FOR LOW VOLUME WORK ZONES
- 2 TRAFFIC CONTROL DEVICES SHALL BE 28" RETROREFLECTIVE CONES
- 3 SIGN SPACING SHALL BE 100 FEET WHEN SPEED LIMIT IS 30 MPH OR LESS
- 4 SIGN SPACING SHALL BE 350 FEET WHEN SPEED LIMIT IS GREATER THAN 30 MPH
- 5 CALL COMM CENTER DAY OF CLOSURE 841-5431
 - 5.1 CLOSURE FOR WEEKDAYS ONLY
 - 5.2 TIMES: 9:00 AM TO 3:00 PM
- 6 DISTANCE BETWEEN CONES EQUALS SPEED LIMIT IN UNITS OF FEET



**CITY OF
PUYALLUP
TRAFFIC
ENGINEERING
DIVISION**

WORK IN CENTER OF LOW-VOLUME ROAD

DRAWN J. HUNTER	PLOTTING SCALE NTS/ 1=1	DATE APPROVED 04-03	REVISED 09-30-09	TCP STANDARD
FILE NAME I:\DRAWINGS\PUBLIC WORKS\TRAFFIC\TCP	CHECKED BY M. FORD	REVISED BY S. TANDLE	NO. 8	



NOTES:

- 1 FLAGGERS SHALL REMAIN IN RADIO CONTACT AT ALL TIMES
- 2 TRAFFIC CONTROL DEVICES SHALL BE 28" RETROREFLECTIVE CONES
- 3 USE A VEHICLE TO PROTECT WORK ZONE.
- 4 USE "BE PREPARED TO STOP" SIGN BETWEEN "FLAGGER AHEAD AND "LANE CLOSED AHEAD SIGNS ON HIGH VOLUME ROADS, SUCH AS: 43RD AVE SE, 9TH ST SW, 5TH ST SW, SHAW RD, AND OTHER STREETS WITH COMPARABLE VOLUMES
- 5 SIGN SPACING SHALL BE 350 FEET WHEN SPEED LIMIT IS GREATER THAN 30 MPH
- 6 SIGN SPACING SHALL BE 100 FEET WHEN SPEED LIMIT IS 30 MPH OR LESS
- 7 CALL COMM CENTER DAY OF CLOSURE 841-5431
 - 7.1 CLOSURE FOR WEEKDAYS ONLY
 - 7.2 TIMES: 9:00 AM TO 3:00 PM
- 8 DISTANCE BETWEEN CONES EQUALS SPEED LIMIT IN UNITS OF FEET

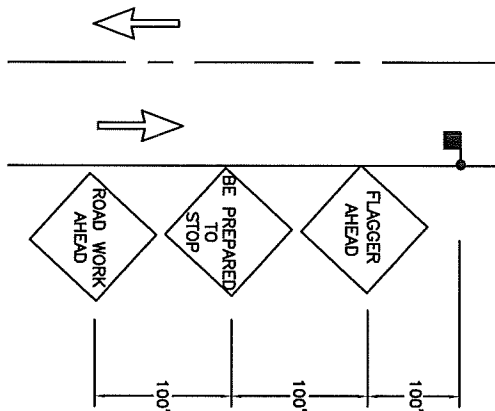
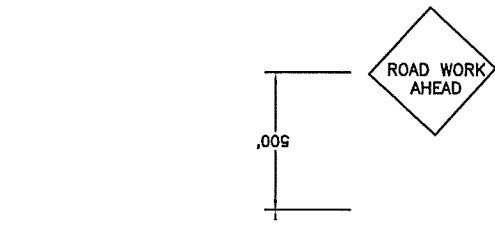


**CITY OF
PUYALLUP
TRAFFIC
ENGINEERING
DIVISION**

WORK IN "T" INTERSECTION LOW-VOLUME ROAD

DRAWN J. HUNTER	PLOTTING SCALE NTS/ 1=1	DATE APPROVED 04-03	REVISED 09-30-09	TCP STANDARD
FILE NAME I:\DRAWINGS\PUBLIC WORKS\TRAFFIC\TCP	CHECKED BY M. FORD	REVISED BY S. TANDLE	NO. 9	

NAME OF STREET: _____

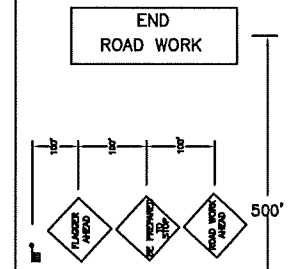


NOTES:

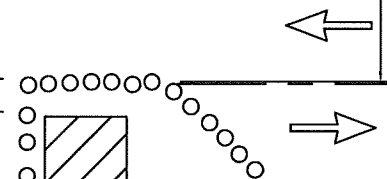
- 1 FOR ARTERIAL WORK ZONES SUCH AS: S. MERIDIAN, BYPASS RIVER ROAD, 39TH AVE SE
- 2 TRAFFIC CONTROL DEVICES SHALL BE RETROREFLECTIVE DRUMS
- 3 TAPER LENGTH EQUALS WIDTH OF OFFSET TIMES SPEED LIMIT SQUARED DIVIDED BY 60

$$L = \frac{WS^2}{60}$$
- 4 DISTANCE BETWEEN SIGNS IS MANDATORY UNLESS FIELD CONDITIONS DETERMINE OTHERWISE
- 5 CALL COMM CENTER DAY OF CLOSURE 841-5431
 - 5.1 CLOSURE FOR WEEKDAYS ONLY
 - 5.2 TIMES: 9:00 AM TO 3:00 PM
- 6 FLAGGERS SHALL REMAIN IN RADIO CONTACT AT ALL TIMES
- 7 DISTANCE BETWEEN CONES EQUALS SPEED LIMIT IN UNITS OF FEET

NAME OF STREET: _____

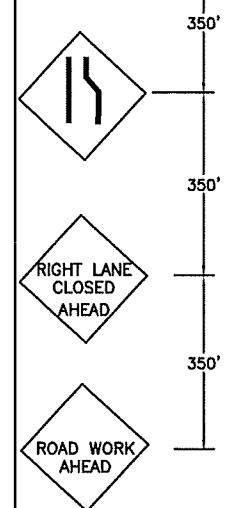


SEE NOTE #7



VEHICLE TO PROTECT WORKZONE

SEE NOTE #3



**CITY OF
PUYALLUP
TRAFFIC
ENGINEERING
DIVISION**

**ARTERIAL INTERSECTION
CLOSURE**

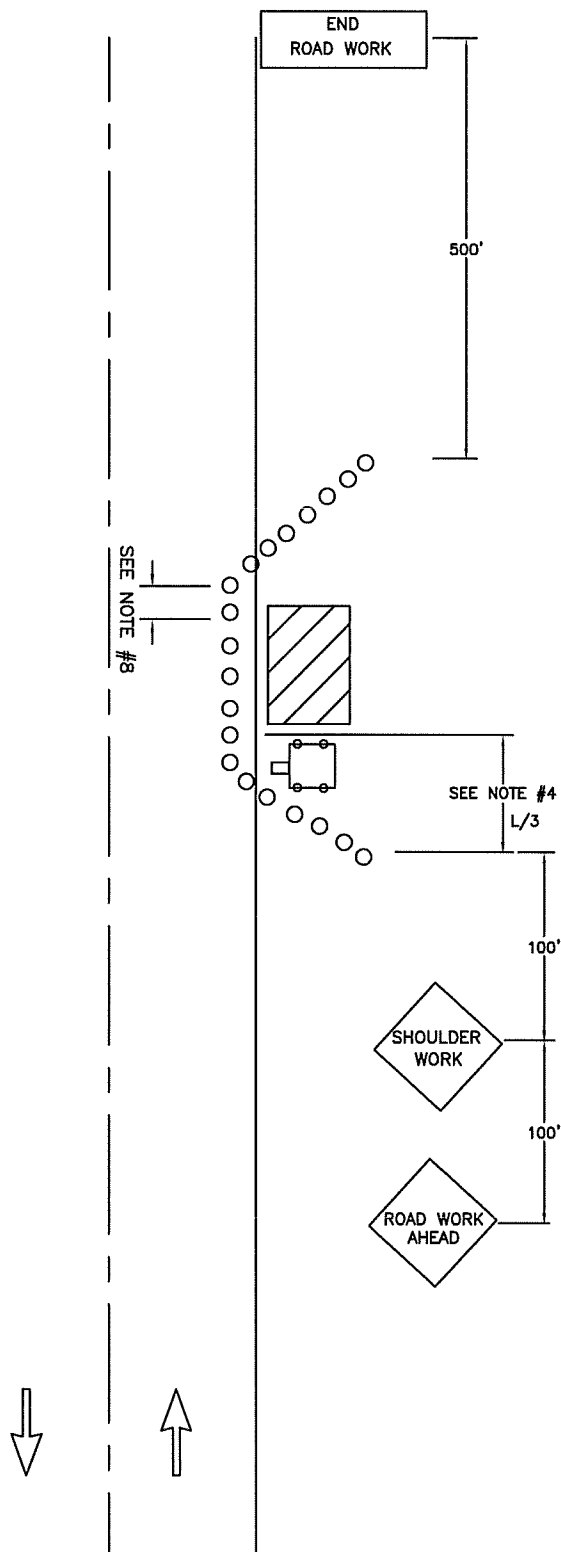
DRAWN J. HUNTER	PLOTTING SCALE NTS/ 1=1	DATE APPROVED 04-03	REVISED 09-30-09	TCP STANDARD
FILE NAME I:\DRAWINGS\PUBLIC WORKS\TRAFFIC\TCP	CHECKED BY M. FORD	REVISED BY S. TANDLE	NO. 10	

NAME OF STREET: _____

NOTES:

- 1 FOR SHOULDER WORK ZONES
- 2 VEHICLE TO PROTECT WORKZONE
- 3 TRAFFIC CONTROL DEVICES SHALL BE 28" RETROREFLECTIVE CONES
- 4 TAPER LENGTH EQUALS WIDTH OF OFFSET TIMES SPEED LIMIT SQUARED DIVIDED BY 60

$$L = \frac{WS^2}{60}$$
- 5 SIGN SPACING SHALL BE 100 FEET WHEN SPEED LIMIT IS 30 MPH OR LESS
- 6 SIGN SPACING SHALL BE 350 FEET WHEN SPEED LIMIT IS GREATER THAN 30 MPH
- 7 CALL COMM CENTER DAY OF CLOSURE 841-5431
 7.1 CLOSURE FOR WEEKDAYS ONLY
- 8 DISTANCE BETWEEN CONES EQUALS SPEED LIMIT IN UNITS OF FEET
9. TRAVEL LANE WIDTH MUST BE 11'(FT) MINIMUM



**CITY OF
PUYALLUP
TRAFFIC
ENGINEERING
DIVISION**

SHOULDER CLOSURE

DRAWN J. HUNTER	PLOTTING SCALE NTS/ 1=1	DATE APPROVED 04-03	REVISED 02/10/11	TCP STANDARD
FILE NAME I:\DRAWINGS\PUBLIC WORKS\TRAFFIC\TCP	CHECKED BY M. FORD	REVISED BY S. TANDLE	NO. 11	