

**FAS SYSTEM MODIFICATION**  
1023 39TH AVENUE SOUTH EAST, PUYALLUP, WA 98374

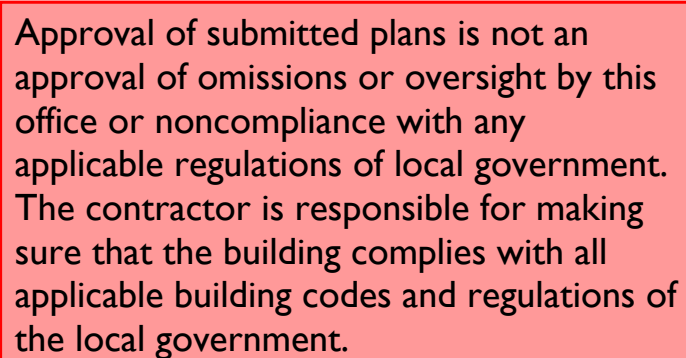
WIRE LEGEND								
SYMBOL	DESCRIPTION	THHN	FPL	FPLP	WET	COLOR CODING	CIRCUIT TYPE	NOTES
D	1 PAIR 16AWG FIRE RATED CABLE	YES	971	60991B	AQ225		DATA (SLC) CIRCUIT	
NOTES:								
** DIFFERENT COLORS/STRIPE COMBINATIONS TO BE USED FOR DIFFERENT CIRCUIT TYPES. LABEL ALL CIRCUITS ACCORDINGLY								
1- WIRE MANUFACTURER IS FOR REFERENCE PURPOSE ONLY. WHEN USING OTHER MANUFACTURE, ENSURE PROPER CROSS REFERENCE								
2- FPLP CAN BE USED IN MOST ALL APPLICATIONS WITH THE EXCLUSION OF WET AND CIRCUIT INTEGRITY REQUIREMENTS								
3- INSTALL WITH PEN NEC. USE CABLE TYPE CONSISTENT WITH NEC REQUIREMENTS: IE, PLENUM, RISER, UNDERGROUND, ETC.								
4- THE "Y" FIBER OPTIC CABLE LISTED IS A BELDEN CABLE PART NUMBER AS WEST PEN NO LONGER SUPPORTS FIBER OPTIC CABLE								
5- THIS CABLE MUST BE INSTALLED IN A CONTINUOUS PATH POINT-TO-POINT. ABSOLUTLEY NO SPLICES ARE ALLOWED.								
6- THIS IS A SPECIFIC CABLE. NO ALTERNATES ARE ALLOWED								

FACP Battery Load & Back-up Calculation										FACP					
Control Panel:			FACP												
Location:			ON-SITE												
FACP Type:			AMPS-24 (Panel P5)												
Line #	Qty.	Part #	Description:	Each Standby	Each Alarm	Total Standby	Total Alarm								
1	1	CPU2-3000D	Fire Alarm Control Panel: 10 SLC Loops, 3180 SLC Devices (CPU Only)	0.3400	0.3400	0.3400	0.3400								
2	2	LCM-320	SLC Loop Control Module	0.1300	0.1300	0.2600	0.2600								
3	2	LEM-320	SLC Loop Expander Control Module	0.1000	0.1000	0.2000	0.2000								
4	267	FSR-561	Intelligent Photovoltaic Smoke Detector: White	0.0002	0.0045	0.0534	1.0115								
5	1	FSR-851	Intelligent Ionization Smoke Detector: White	0.0003	0.0045	0.0003	0.0003								
6	3	FSI-951	Intelligent Heat Detector - 135° Fixed Temp: White	0.0002	0.0045	0.0006	0.0115								
7	271	B300-4	Intelligent Detector Base: White	0.0000	0.0000	0.0000	0.0000								
8	10	OS-90	Beam Detector Imager: 80deg Field of View, 20-111ft or 39-223ft (Low & High Beam)	0.0000	0.0070	0.0070	0.0070								
9	87	DNR	Duct Detector Housing	0.0000	0.0000	0.0000	0.0000								
10	87	FSR-551R	Intelligent Photovoltaic Smoke Detector for DNR Duct Smoke Housing	0.0003	0.0065	0.0261	0.5555								
11	44	NBG-12LX	Addressable Manual Pull Station	0.0004	0.0050	0.0165	0.2600								
12	16	FM-1	Addressable Monitor Module	0.0004	0.0050	0.0064	0.0800								
13	1	FM-101	Addressable Mini Monitor Module	0.0004	0.0004	0.0004	0.0004								
14	33	FM-1A	Addressable Dual Monitor Module	0.0002	0.0054	0.0070	0.2112								
15	102	FCM-1	Addressable Control Module (NAC)	0.0004	0.0065	0.0258	0.6630								
16	32	FRM-1	Addressable Relay Module	0.0002	0.0065	0.0074	0.2080								
17	2	XP10-M	XP Module - 10 Class AB Inputs	0.0035	0.0050	0.0070	0.1100								
						Total Current Draw	1.0357	4.1486							
<b>BATTERY LOAD CALC for FACP:</b>										FACP Max P.S. Rating	5,000	Total Amps Required:	4.150	% Used	83%
Hours Standby		24	Total Standby Current		1.0357		Total Amp Hours Required (Ah)		24.9						
Minutes Alarm		5	Total Alarm Current		4.1486		Total Amp Minutes Required (Ah)		0.3						
Backup Generator?		Unknown					Minimum Battery Size Needed (Ah)		25.2						
Voice Evacuation?		No			Spare Circuit Capacity		Spare Battery Capacity Required		31.5						
Military?		No			25%		Actual Battery Size Required (Ah)		63.3						
MAXIMUM CHARGER CAPACITY IS: 200 AH										Total AH Rated Batteries Supplied:		350			

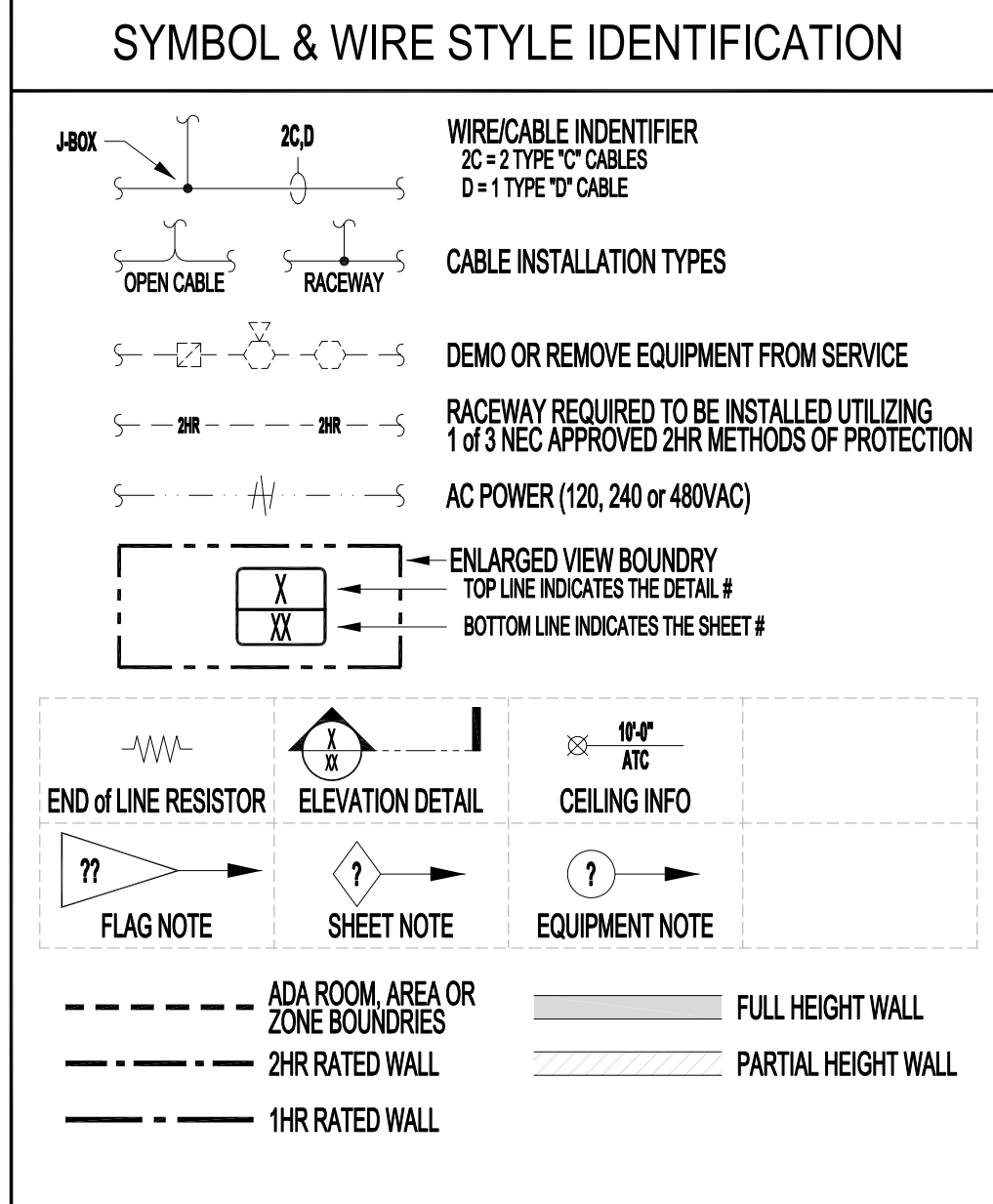
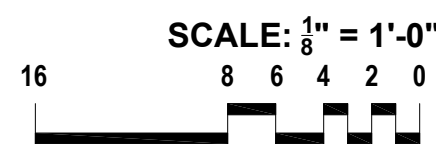
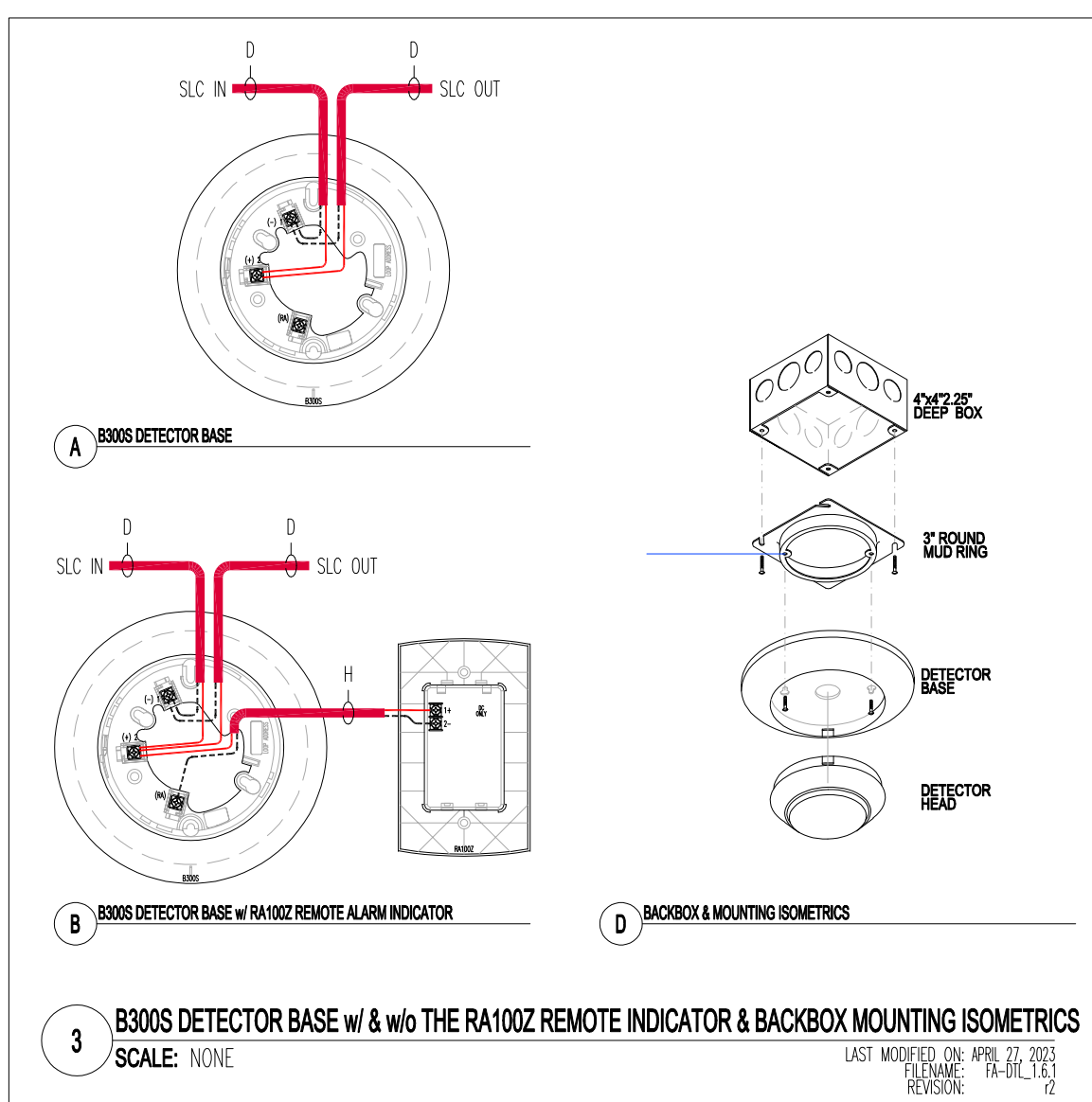


**City of Puyallup  
Fire  
REVIEWED  
FOR  
COMPLIANCE**

DDrake  
05/29/2025  
8:06:55 AM



THE APPROVED CONSTRUCTION  
PLANS AND ALL ENGINEERING  
MUST BE POSTED ON THE JOB AT  
ALL INSPECTIONS IN A VISIBLE AND  
READILY ACCESSIBLE LOCATION.

[illegible][illegible]

### Approvals Required

Contract With

BURKE ELECTRIC

12605 44TH PL S  
TUKWILA, WA 98178

Contract Name

CENTERIS DATA  
CENTER L3

1023 39TH AVENUE SOUTH EAST  
PUYALLUP, WA 98374

### FAS SYSTEM MODIFICATION

Sheet Title

## PROJECT INFO, FAS LAYOUT, CALCS & DETAILS

### Key Points

Date: 05/01/2025

Job Number: 390070

Designer: SEAN D. FODOR

Building Permit

Sheet Number

**FA-0.00**

**SHEET 1 OF 1**