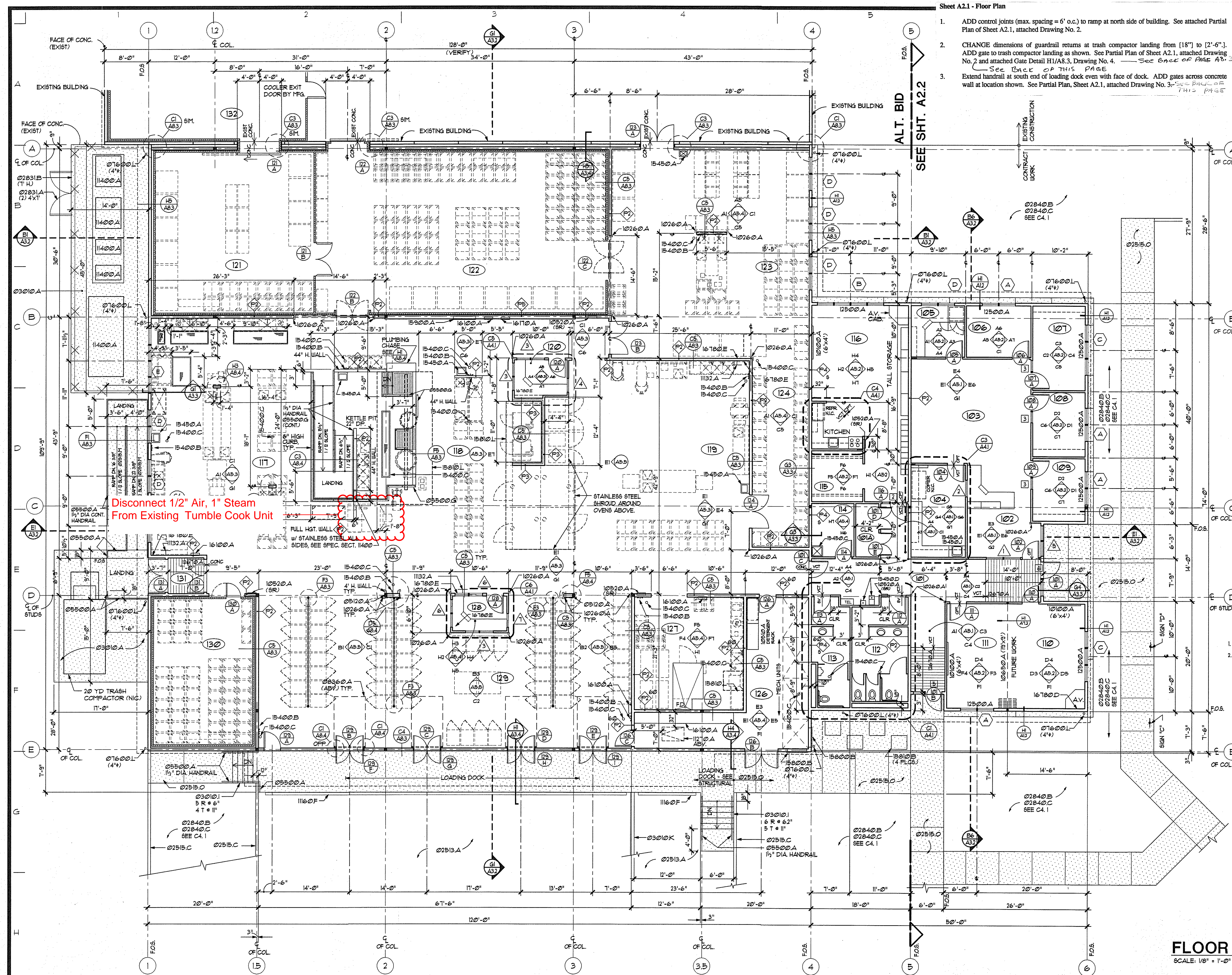


Drawing Name: E:\DWG\CD\7WME10
Plot Date/Scale: 03-25-1996 Plot Scale 1=360



- Sheet A2.1 - Floor Plan
- ADD control joints (max. spacing = 6' o.c.) to ramp at north side of building. See attached Partial Plan of Sheet A2.1, attached Drawing No. 2.
 - CHANGE dimensions of guardrail returns at trash compactor landing from [18"] to [2'-6"]. ADD gate to trash compactor landing as shown. See Partial Plan of Sheet A2.1, attached Drawing No. 2 and attached Gate Detail H1/A8.3, Drawing No. 4. See BACK OF THIS PAGE
 - Extend handrail at south end of loading dock even with face of dock. ADD gates across concrete wall at location shown. See Partial Plan, Sheet A2.1, attached Drawing No. 3. See BACK OF THIS PAGE

ROOM LEGEND

- | | |
|-----|---------------------------------|
| 101 | ENTRY/CORRIDOR |
| 102 | PHONE AND DATA ROOM |
| 103 | WAITING |
| 104 | RECEPTION |
| 105 | WORKROOM |
| 106 | ACCOUNTING STAFF |
| 107 | STORAGE AND FILES |
| 108 | SUPERVISOR |
| 109 | KITCHEN COORDINATOR |
| 110 | KITCHEN COORDINATOR |
| 111 | CONFERENCE |
| 112 | CONFERENCE |
| 113 | WOMEN'S TOILET ROOM |
| 114 | MEN'S TOILET ROOM |
| 115 | CUSTODIAL |
| 116 | COATS |
| 117 | STAFF BREAK ROOM |
| 118 | COLD PREP/CATERING |
| 119 | COOKING |
| 120 | BAKERY |
| 121 | KITCHEN MANAGER |
| 122 | FREEZER |
| 123 | STORAGE COOLER |
| 124 | INGREDIENT ROOM |
| 125 | FINISHED BAKERY PRODUCT STORAGE |
| 126 | NOT USED |
| 127 | MECHANICAL |
| 128 | SCULLERY |
| 129 | DISPATCH MANAGER |
| 130 | CART LOADING |
| 131 | FINISHED PRODUCT COOLER |
| 132 | VESTIBULE |
| 133 | WAREHOUSE FREEZER |

MATERIALS KEY

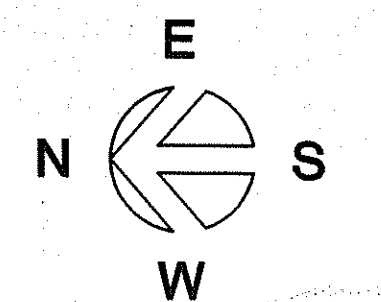
- | | |
|---------|--|
| 02513.A | ASPHALT CONCRETE - SEE CIVIL (THICKNESS) |
| 02515.C | EXTRUDED CONCRETE CURB |
| 02515.M | WHEELCHAIR RAMP PER WDOT STANDARDS |
| 02515.O | CONCRETE WALK |
| 02831.A | CHAINLINK FENCE (HEIGHT) |
| 02831.B | CHAINLINK GATE (WIDTH) |
| 02840.B | LAWN - SEE LANDSCAPE |
| 02840.C | PLANTING - SEE LANDSCAPE |
| 03010.A | CONCRETE SLAB - SEE STRUCTURAL |
| 03010.I | CAST-IN-PLACE CONCRETE STAIRS |
| 03010.K | CONCRETE RETAINING WALL - SEE STRUCTURAL |
| 03010.L | STEEL TUBE COLUMN - SEE STRUCTURAL |
| 03500.A | GALVANIZED STEEL PIPE RAIL (FINISH) |
| 03500.G | BLACK STEEL PIPE RAIL (FT.) |
| 03600.A | ABS DOWNSPOUT (DIA/FIN) |
| 03600.L | SECTIONAL OVERHEAD DOOR - MANUAL (SIZE) |
| 03600.A | WHITEBOARD (DIM) |
| 03600.A | CORNER GUARD |
| 03600.A | ADJUSTABLE STEEL SHELVING |
| 03600.A | FIRE EXTINGUISHER AND CABINET (MOUNTING) |
| 03600.A | OPERABLE PARTITION |
| 03600.A | TELEVISION MOUNTING BRACKETS |
| 03600.A | DOCK BUFFER |
| 03600.A | DISAPPEARING STAIRS |
| 03600.A | HORIZONTAL BLINDS |
| 03600.A | ADHERED ENTRANCE MAT |
| 03600.A | HOSE BIBB - SEE MECHANICAL |
| 03600.A | FLOOR DRAIN - SEE MECHANICAL |
| 03600.A | SINK - SEE MECHANICAL |
| 03600.A | SERVICE SINK - SEE MECHANICAL |
| 03600.A | DRINKING FOUNTAIN - SEE MECHANICAL |
| 03600.A | HOT WATER DISPENSER - SEE MECHANICAL |
| 03600.A | WEATHERPROOF LOUVER - SEE SCHEDULE |
| 03600.A | HEAT EXCHANGER - SEE MECHANICAL |
| 03600.A | OUTDOOR CONDENSING UNIT - SEE MECH |
| 03600.A | KITCHEN HOOD - SEE MECHANICAL |
| 03600.A | CONTROL PANEL - SEE MECHANICAL |
| 03600.A | ELECTRICAL PANEL - SEE ELECTRICAL |
| 03600.A | TV/AUDIO/VIDEO OUTLET - SEE ELEC. |
| 03600.A | AV OUTLET - SEE ELECTRICAL |

NOTES

- SEE A42, A43, A44, A45 FOR DETAIL PLAN OF KITCHEN EQUIP.
- ALL INTERIOR PARTITIONS ARE (P) UNLESS NOTED OTHERWISE.
- ALL EXTERIOR WALLS ARE (E) UNLESS NOTED OTHERWISE.
- SEE WALL TYPE LEGEND ON SHEET A22

FLOOR PLAN

SCALE: 1/8" = 1'-0"



PRM20250735

BLR+B

BLR+B ARCHITECTS, P.S.
Bur Lawrence Rising + Bates Architects P.S.
Architects, Planning and Interiors
1145 Broadway Place, Suite 1200, Tacoma, WA 98402-3519 • (360) 627-5059

APPROVALS

| | |
|----------|--------------|
| DESIGNED | J.K. |
| DRAWN | D.F. |
| CHECKED | |
| DATE | 4/2/96 |
| SCALE | 1/8" = 1'-0" |

REGISTERED ARCHITECT

3255

PAUL S. WISNICKI
STATE OF WASHINGTON

SITTS & HILL
ENGINEERS, INC.
CIVIL - STRUCTURAL - SURVEYING

2901 S. 40th ST. TACOMA, WA 98409 (206) 474-9449

PREPARED BY

PUYALLUP
SCHOOL DISTRICT NO. 3
109 EAST PIONEER
PUYALLUP, WASHINGTON 98372
(206) 841-1301

PROJECT

CENTRAL KITCHEN FACILITY
3607 17th St SW Puyallup, Washington

SHEET TITLE

FLOOR PLAN

SHEET NO.

A2.1

PROJECT NO.

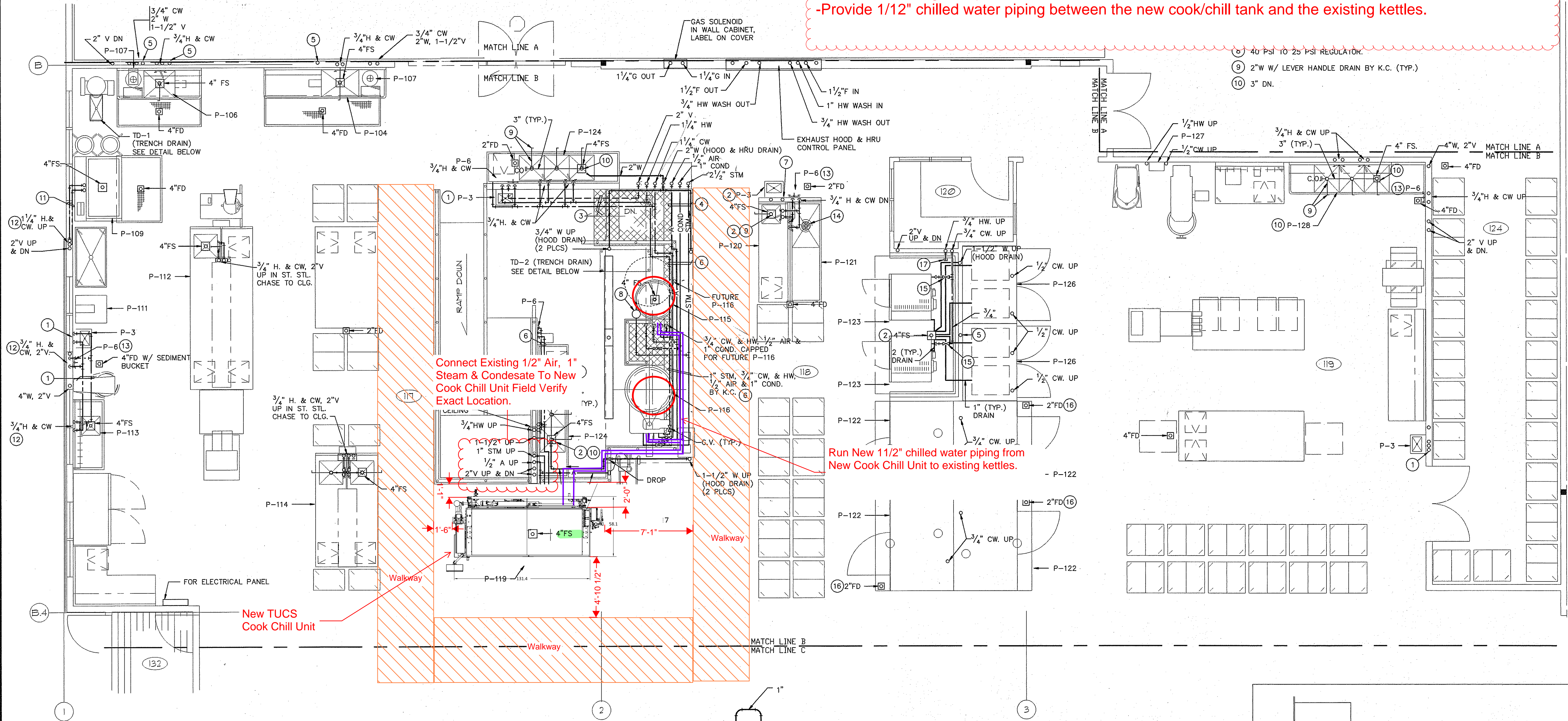
7351

© 1996 BLR+B ARCHITECTS, P.S. (JOB # 93.47)

PLAN NOTES:

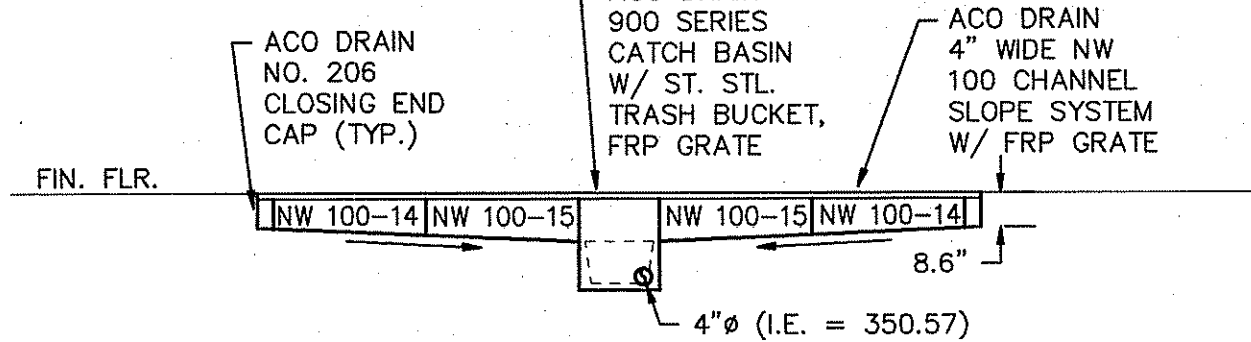
Scope of Work:

- Disconnect existing Compressed Air, Steam, Condensate, From Existing Tumble Chill Unit
- Connect Existing Compressed Air, Steam & Condensate to New Cook Chill Unit
- Provide 1/12" chilled water piping between the new cook/chill tank and the existing kettles.



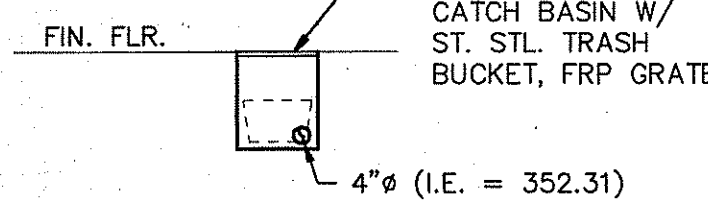
KITCHEN PLUMBING PLAN B

SCALE: 1/4" = 1'-0"



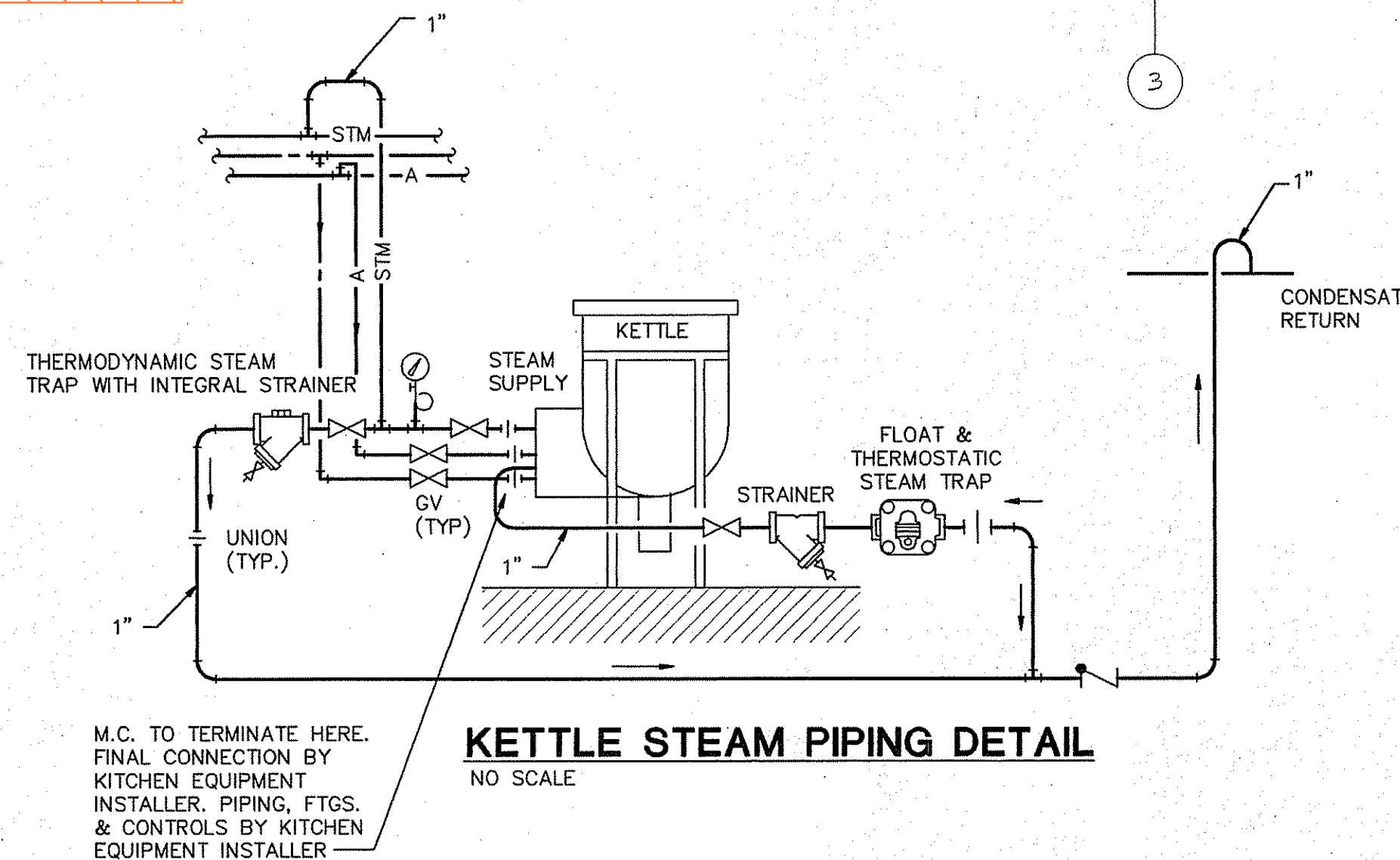
TRENCH DRAIN (TD-2) DETAIL

SCALE: 1/4" = 1'-0"



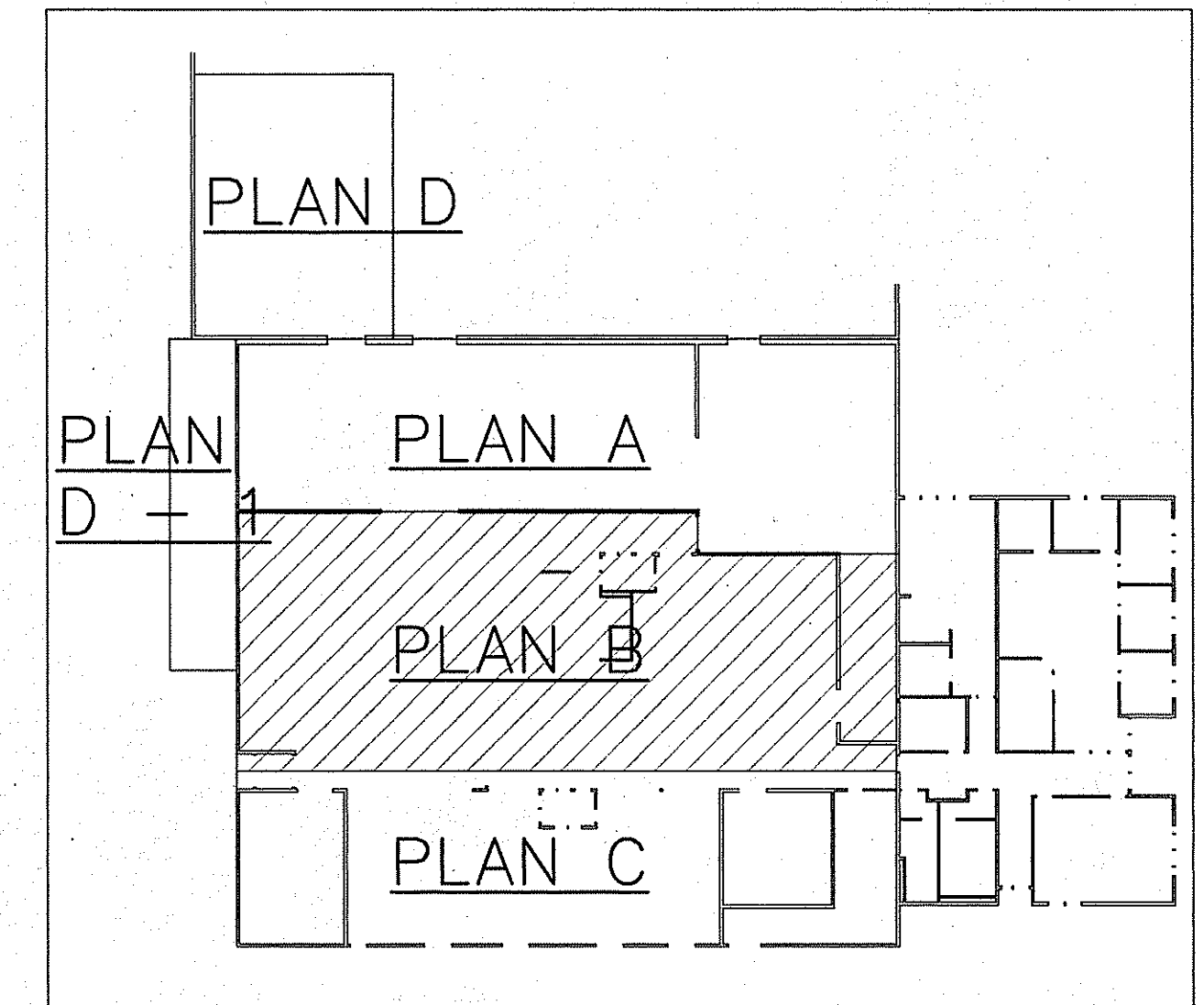
TRENCH DRAIN (TD-1) DETAIL

SCALE: 1/4" = 1'-0"



KETTLE STEAM PIPING DETAIL

NO SCALE



TRES WEST
ENGINEERS, INC.
2702 SOUTH 42ND STREET, SUITE 301
TACOMA, WA 98409-7315
TEL: (206) 472-3300
FAX: (206) 472-3443



DESIGNED: D. MEYER
DRAWN: T. SISCO
CHECKED: F. KOENIG
DATE: APRIL 2, 1996
SCALE: 1/4" = 1'-0"



SITTS & HILL
ENGINEERS, INC.
CIVIL - STRUCTURAL - SURVEYING
2901 S. 40TH ST. TACOMA, WA 98409
(206) 474-9449

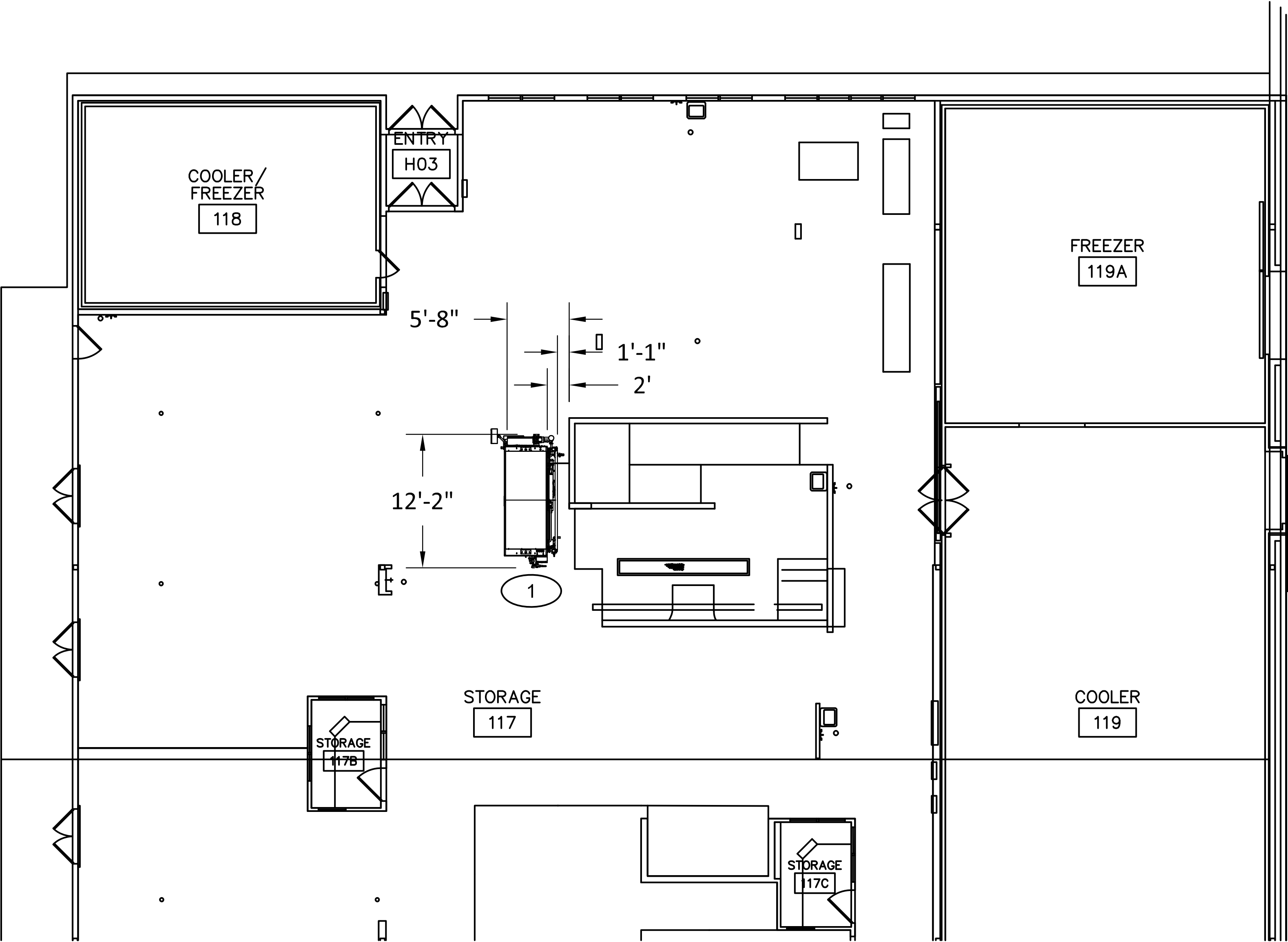
PUYALLUP
SCHOOL DISTRICT NO. 3
109 EAST PIONEER
PUYALLUP, WASHINGTON 98372
(206) 841-1301

CENTRAL KITCHEN FACILITY
3607 17th St SW Puyallup, Washington
SHEET TITLE
1/4" KITCHEN PLUMBING
PLAN B

M4.2
PROJECT NO.
7351

| LEGEND | | |
|--------|-----------------|--|
| ITEM # | MODEL # | DESCRIPTION |
| 1 | TEBCCT-200-CWUV | 200 GAL BATCH COOK/CHILL TANK, CWTO, ULTRAVIOLET |

| REVISIONS | | | | |
|--------------|-----|-----------------------|-----------|------------|
| PRMH20250735 | | | | |
| ZONE | REV | DESCRIPTION | DATE | REVISED BY |
| | A | RELEASED FOR APPROVAL | 3/14/2025 | T. AFFELDT |



TUCS DRAWING APPROVAL

APPROVED BY: _____ DATE: _____

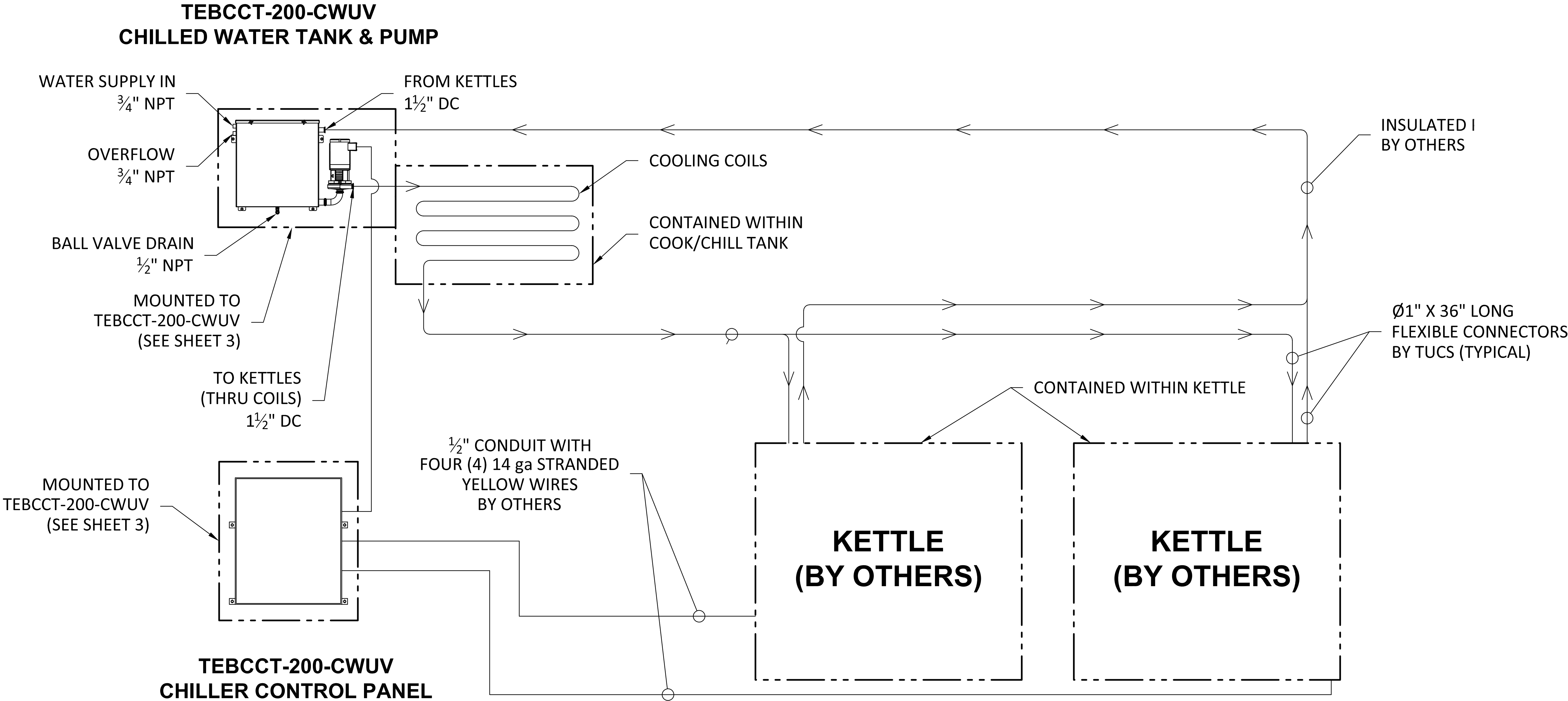
TUCS EQUIPMENT INC. MUST RECEIVE FINAL APPROVAL OF THIS DRAWING PRIOR TO FABRICATION. APPROVAL OF THIS DRAWING CERTIFIES THAT THE SPECIFIED EQUIPMENT HAS BEEN REVIEWED AND ALL OF THE INFORMATION CONTAINED WITHIN HAS BEEN APPROVED AND ACCEPTED BY PURCHASER

| | | | | |
|---|----------------------|---|--------------|---------------|
| TITLE: PUYALLUP - QUOTE 24092 REV 8 FLOOR PLAN | | UNLESS OTHERWISE SPECIFIED: | MODEL NUMBER | REV |
| | | DIMENSIONS ARE IN INCHES AND ARE USED FOR REFERENCE ONLY. ON-SITE VERIFICATION MAY BE REQUIRED. DO NOT SCALE. | FLOOR PLAN | A |
| DATE: 3/14/2025 | DRAWN BY: T. AFFELDT | | | SHEET: 1 OF 3 |

| LEGEND | | | | | | | | |
|---------------|-------|-------|---------|-----------------|----------|------------------------|------------|--------------|
| ** ELECTRICAL | | | | WATER | | | | |
| TOTAL AMPS | VOLTS | PHASE | PLUG IN | WATER SUPPLY IN | OVERFLOW | BALL VALVE DRAIN (NPT) | TO KETTLES | FROM KETTLES |
| (3.3) | 208 | 3 | NO | ¾" NPT | * ¾" NPT | * ½" NPT | 1 ½" DC | 1 ½" DC |

* DIRECT CONNECTION TO DRAIN NOT REQUIRED, PLACEMENT NEAR FLOOR SINK SUGGESTED.
** ELECTRICAL SUPPLY AND CONTROLS PROVIDED THROUGH COOK/CHILLER CONTROL PANEL.

| REVISIONS | | | | | PRMH20250735 |
|-----------|-----|----------------------|--|-----------|--------------|
| ZONE | REV | DESCRIPTION | | DATE | REVISED BY |
| | A | RELEASE FOR APPROVAL | | 3/14/2025 | T. AFFELDT |

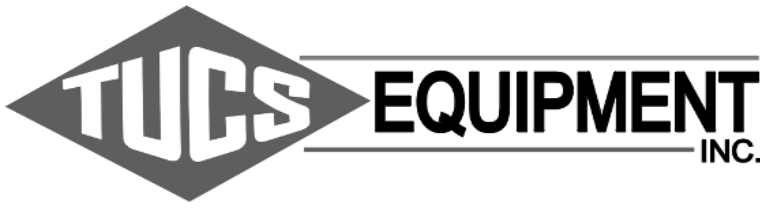


TUCS DRAWING APPROVAL

APPROVED BY: _____ DATE: _____

TUCS EQUIPMENT INC. MUST RECEIVE FINAL APPROVAL OF THIS DRAWING PRIOR TO FABRICATION. APPROVAL OF THIS DRAWING CERTIFIES THAT THE SPECIFIED EQUIPMENT HAS BEEN REVIEWED AND ALL OF THE INFORMATION CONTAINED WITHIN HAS BEEN APPROVED AND ACCEPTED BY PURCHASER

| | | | | |
|---|--|-----------------------|--|---------------|
| TITLE: PUYALLUP - QUOTE 24092 REV 8 CHILLED WATER TAKE OFF DIAGRAM | | MODEL NUMBER | | REV |
| | | CHILLED WATER DIAGRAM | | A |
| DATE: 3/14/2025 | | DRAWN BY: T. AFFELDT | | SHEET: 2 OF 3 |

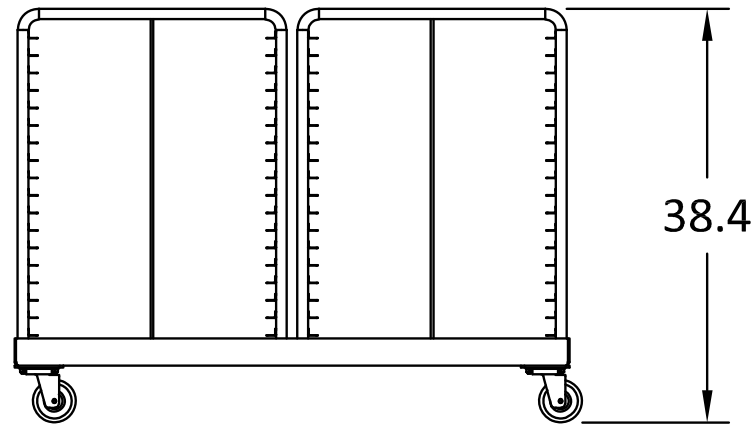
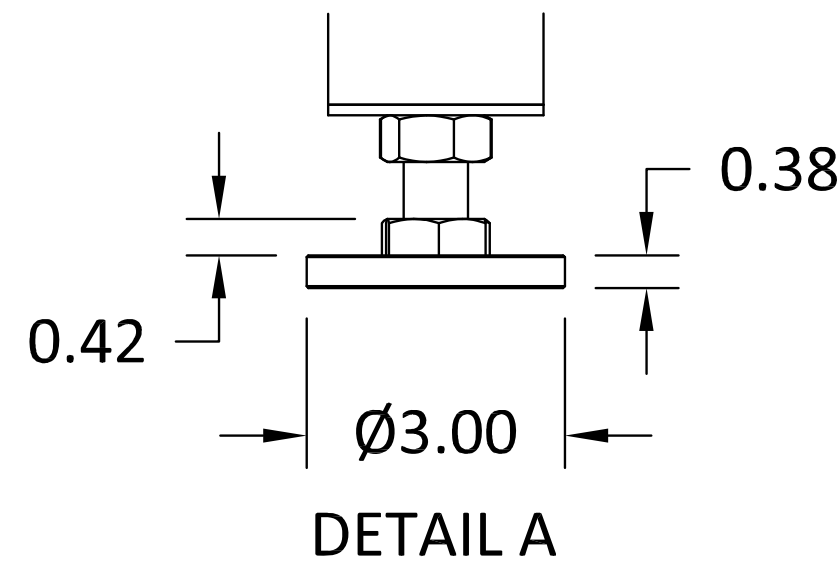


| LEGEND | | | | | | | | | | | | | | | |
|----------------|-----|--------------|------------------|------------|-------|-------|---------|-------------------|-------------|-------------------------|---------------|------------|---------------|----------|------------|
| COMPRESSED AIR | | | | ELECTRICAL | | | | EWON | STEAM | | WATER | | REFRIGERATION | | |
| CFM | PSI | CONNECT SIZE | QUICK DISCONNECT | AMPS | VOLTS | PHASE | PLUG IN | CAT 5 OR WIRELESS | INPUT (NPT) | CONDENSATE RETURN (NPT) | POTABLE (NPT) | DRAIN (DC) | LIQUID | SUCTION | TOTAL BTUH |
| 10 | 90 | ¼" | YES | 17.1 | 208 | 3 | NO | CAT 5 | 1" | 1" | ¾" | * 2" | (4X) ⅞" | (4X) 1⅜" | 230,000 |

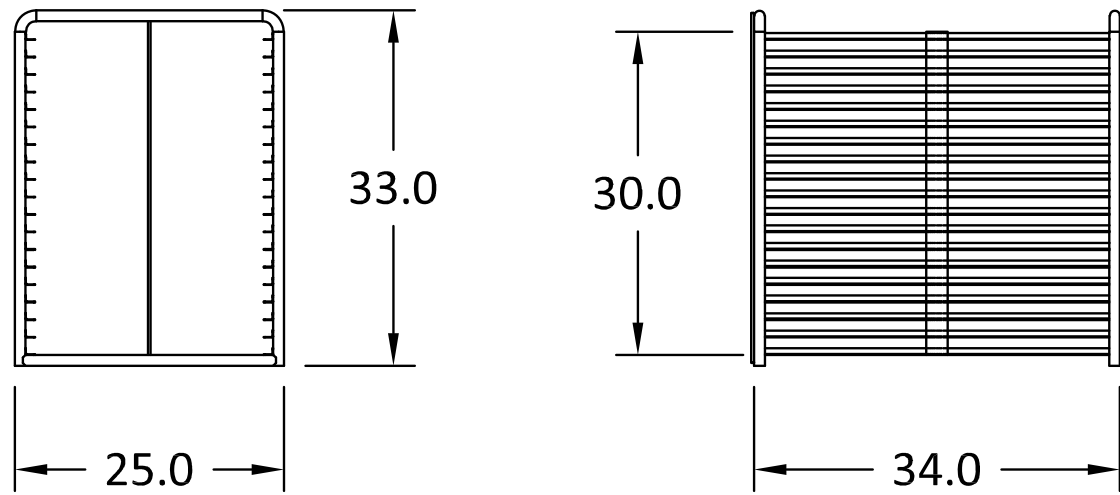
LEGEND NOTES:
* DIRECT CONNECTION TO DRAIN NOT REQUIRED, PLACEMENT NEAR FLOOR SINK SUGGESTED.

NOTES:

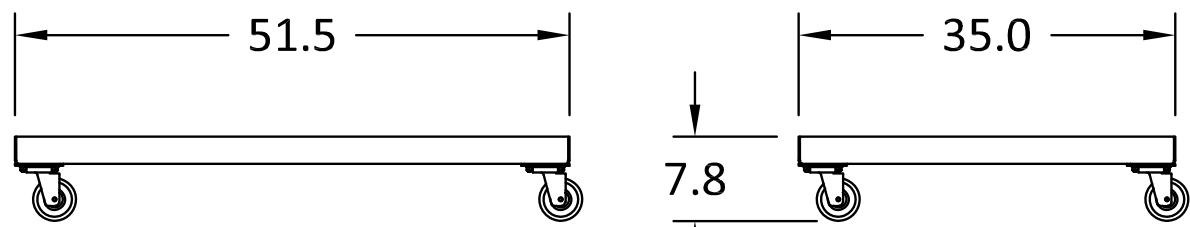
- 3' FLEXIBLE CONNECTIONS SHALL BE PROVIDED FOR COMPRESSED AIR, STEAM IN, STEAM OUT, AND POTABLE WATER.
- INCLUDES DIAL UP ALARM AND LOCKING COVER.
- SEE SHEET 2 FOR CHILLED WATER TAKE OFF DETAILS.
- 4X REFRIGERATION COILS BASED ON 4X CUSTOMER SUPPLIED 6HP (60,000 BTU) CONDENSING UNITS.



SINGLE DOLLY W/TWO SHELVING RACKS

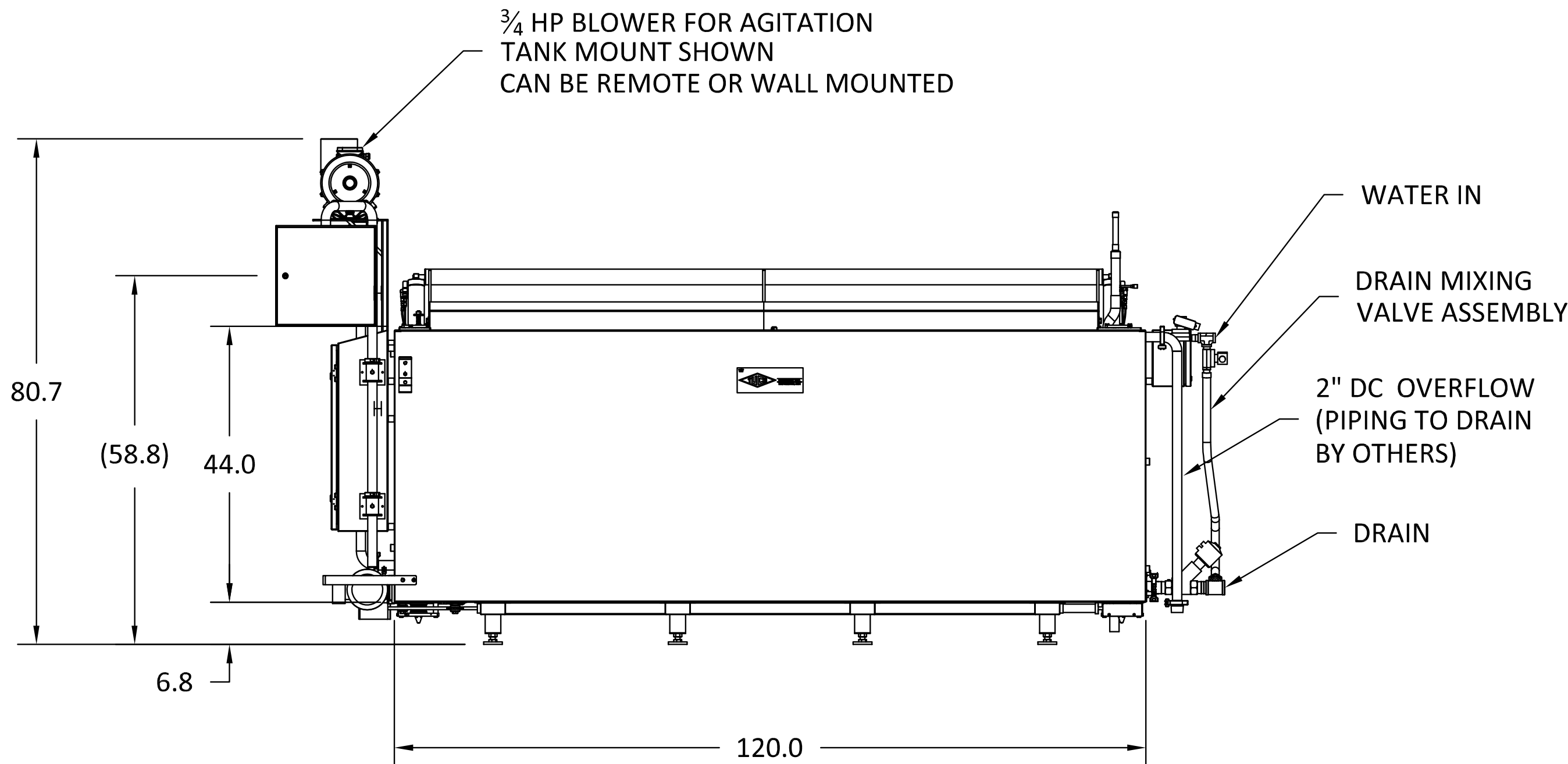
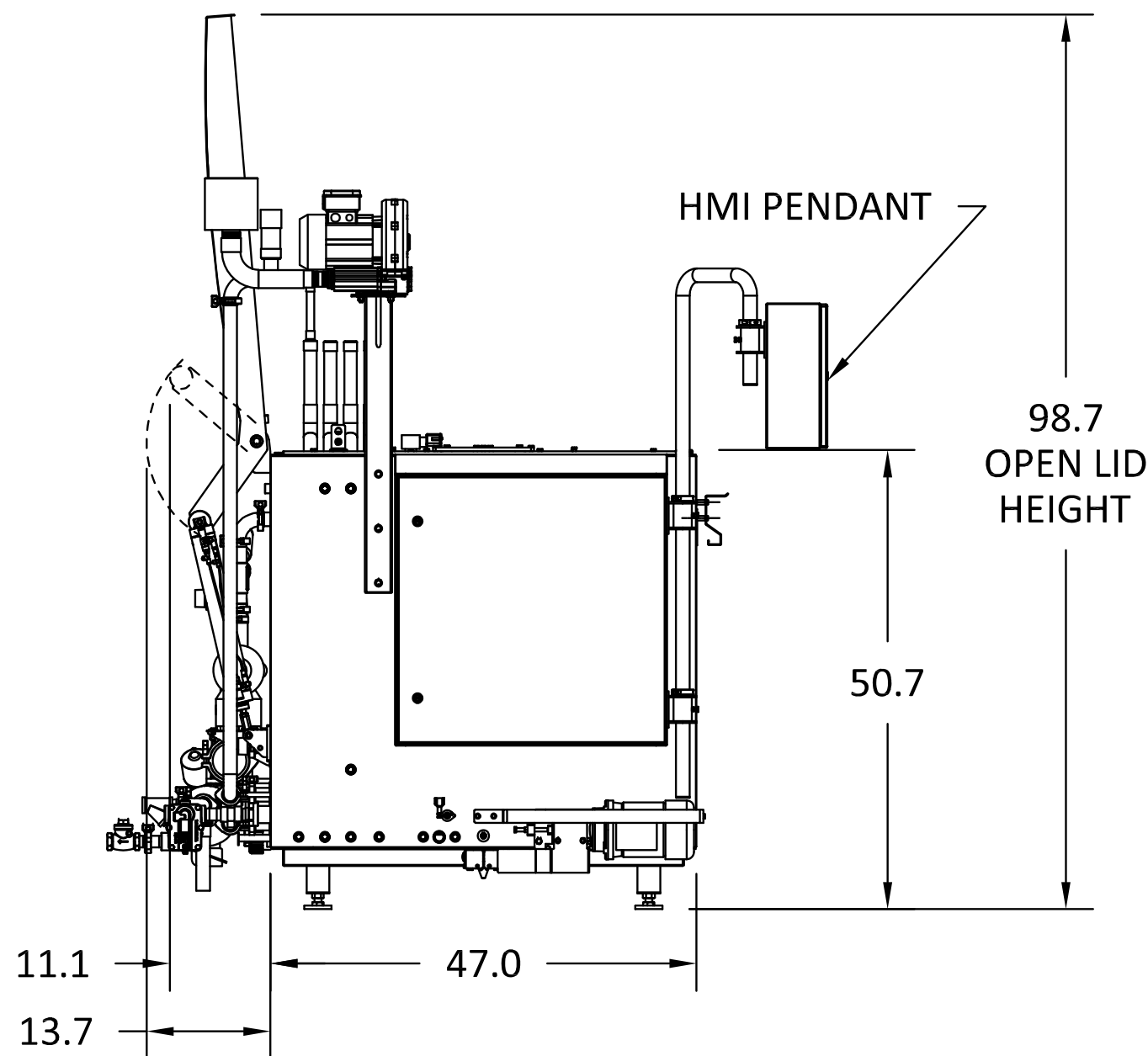
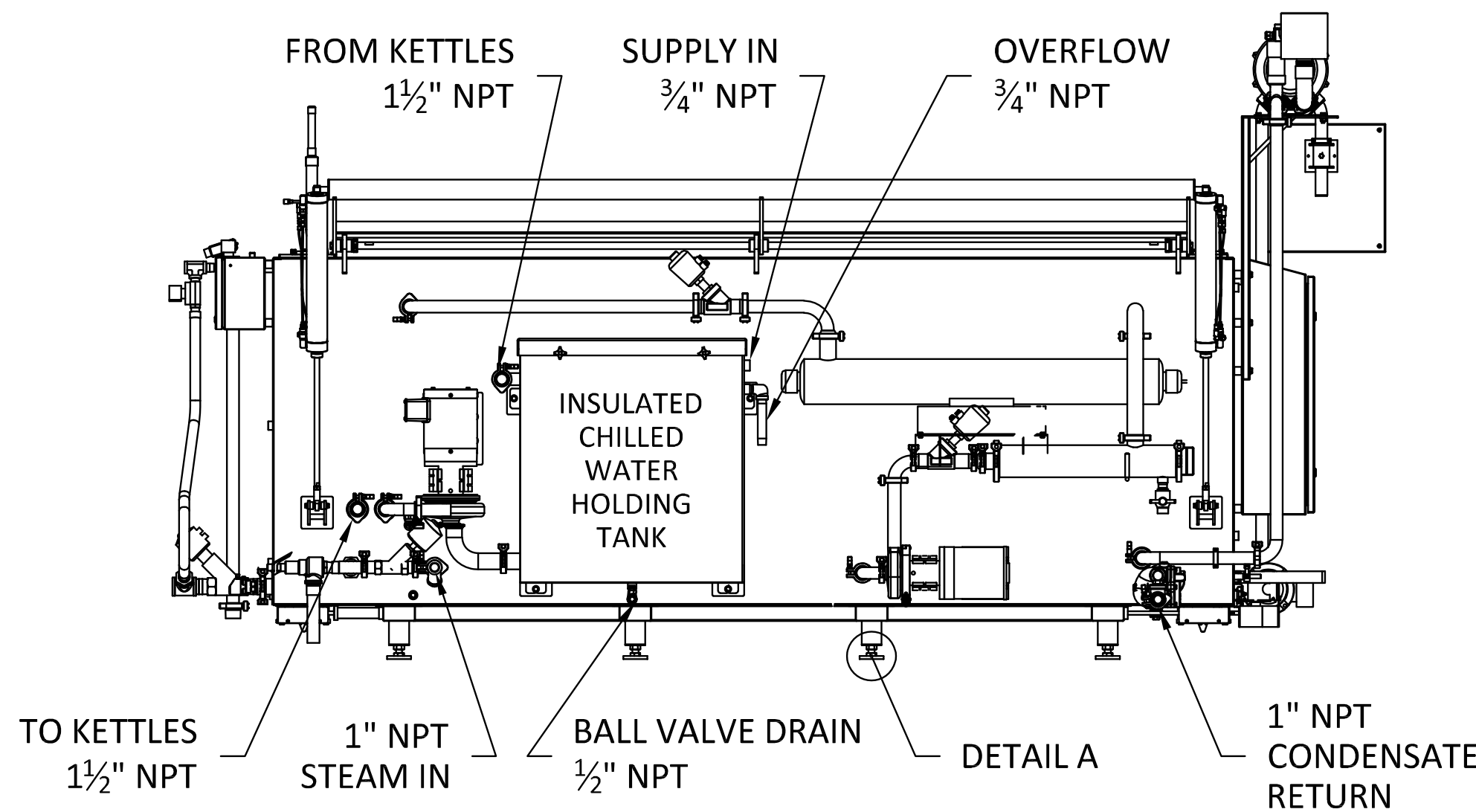
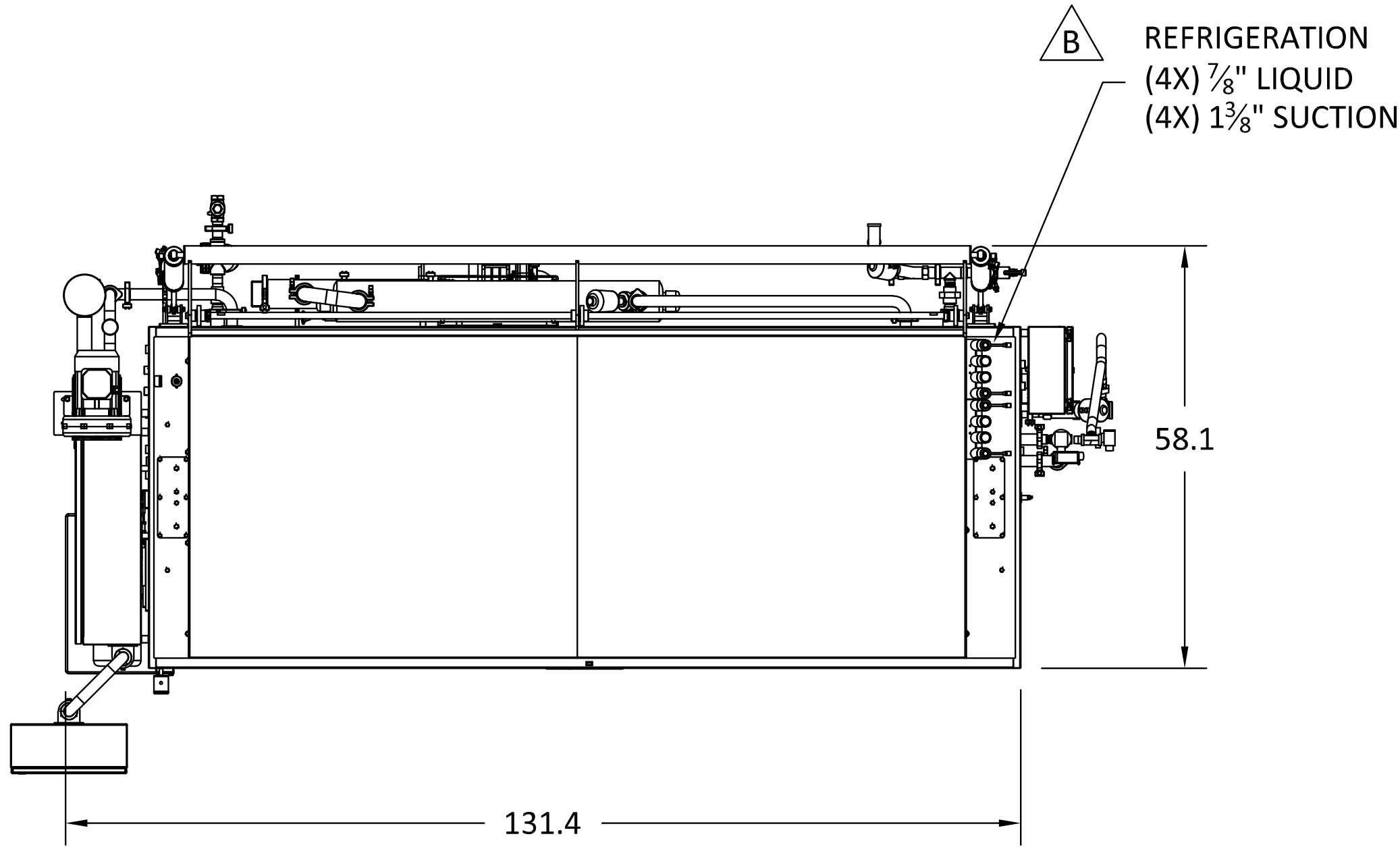


SHELVING RACK
QTY. 4



RACK DOLLY
QTY. 2

| REVISIONS | | | | |
|-----------|-----|--|-----------|------------|
| ZONE | REV | DESCRIPTION | DATE | REVISED BY |
| | A | RELEASED FOR APPROVAL | 3/14/2025 | T. AFFELDT |
| | B | 4X REFRIGERATION CONNECTIONS WAS 2X AND ADDED NOTE 4 | 4/7/2025 | T. AFFELDT |



TUCS DRAWING APPROVAL

APPROVED BY: _____ DATE: _____

TUCS EQUIPMENT INC. MUST RECEIVE FINAL APPROVAL OF THIS DRAWING PRIOR TO FABRICATION. APPROVAL OF THIS DRAWING CERTIFIES THAT THE SPECIFIED EQUIPMENT HAS BEEN REVIEWED AND ALL OF THE INFORMATION CONTAINED WITHIN HAS BEEN APPROVED AND ACCEPTED BY PURCHASER

TITLE: PUYALLUP - QUOTE 24092 REV 8

BATCH COOK CHILL TANK, 200 GALLON

DATE: 3/14/2025

DRAWN BY: T. AFFELDT

UNLESS OTHERWISE SPECIFIED:

DIMENSIONS ARE IN INCHES AND ARE USED FOR REFERENCE ONLY.

ON-SITE VERIFICATION MAY BE REQUIRED.

DO NOT SCALE.

MODEL NUMBER

TEBCCT-200-CWUV



REV

B

SHEET:
3 OF 3