

Diagram illustrating the refrigeration system components and flow:

- REFRIGERATION RACK @ ROOF OR HIGHER LEVEL
- REFRIGERATION LINE
- P-TRAP EVERY 15'
- REFRIGERATION UNIT

**USE 15% SIL-FOS ON ALL BRAZING**

180° ELBOW  
SUCTION TEE

SUCTION "T"

SUCTION TRUNK

VERTICAL  
SUCTION RISER

LIQUID "T"

LIQUID TRUNK

LIQUID LINE  
TO FIXTURE

## GENERAL NOTES

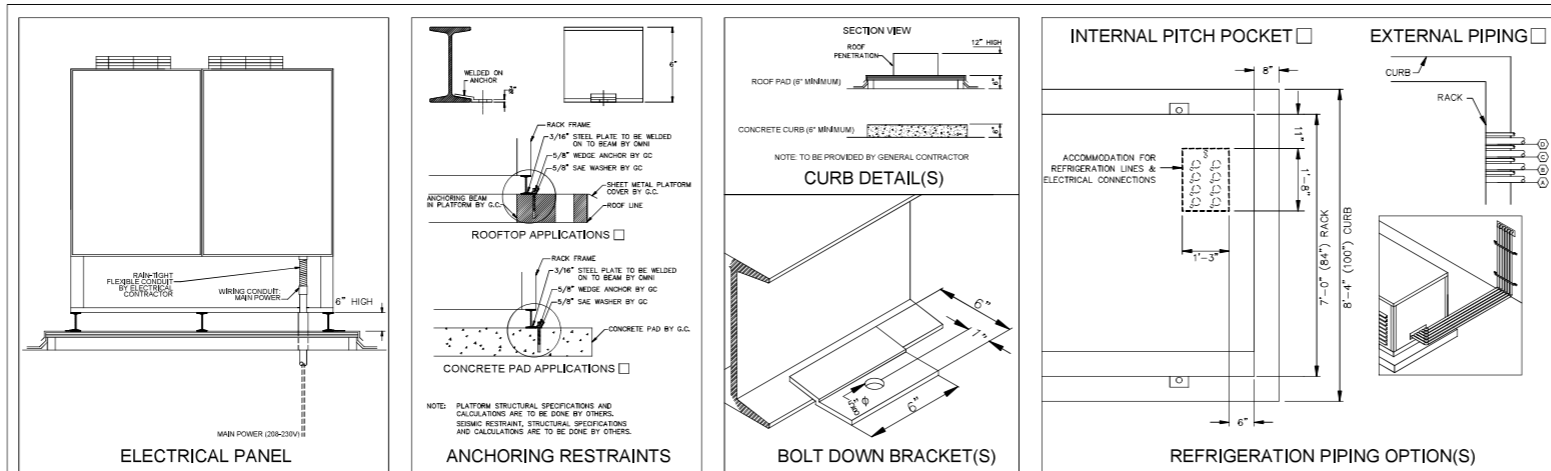
1. CONTRACTORS SHALL VERIFY ALL DIMENSIONS AND COORDINATE WITH OHM TEMP REFRIGERATION.
2. REFER TO ALL NOTES ON THIS PLAN. ROUTING OF REFRIGERATION TUBING IS FURNISHED AS A GUIDE. IT WILL BE NECESSARY TO COPE WITH CONSTRUCTION CONDITIONS.
3. ALL CORED HOLES REQUIRED ON JOB ARE TO BE PROVIDED BY GENERAL CONTRACTOR.
4. ALL CORED HOLES SHALL BE PREPARED AS REQUIRED BY LOCAL CODES BY GENERAL CONTRACTOR.
5. MINIMUM 48" CLEARANCE FOR ACCESSIBILITY AROUND COMPRESSOR RACK REQUIRED FOR SERVICEABILITY.
6. MINIMUM 48" CLEARANCE IN FRONT OF ELECTRICAL PANEL.
7. AFTER INSTALLATION OF REFRIGERATION LINES, GENERAL CONTRACTOR SHALL BACKFILL THE PITCH TO THE REQUIRED FINISH.

NOTE: ALL COILS SUPPLIED WITH EXPANSION VALVES, THERMOSTATS AND SOLENOID VALVES MOUNTED AND PRE-WIRED IN EACH COIL SUPPLIED BY OMNITEMP REFRIGERATION (UNLESS OTHERWISE NOTED ON FRONTS).

1. ALL COPPER TUBING TO BE REFRIGERANT GRADE TYPE "P" CLEANED & DEGASIFIED, JOINTS FOR ALL HAND COPPER TUBING SHALL BE SEWED TYPE FITTINGS. SUCCTION LINES TO BE INSULATED WITH 1/2" MIN. POLYURETHANE INSULATION. DISCHARGE LINES TO BE INSULATED WITH 1/4" MIN. POLYURETHANE INSULATION.
2. ALL SUCCTION LINES WITH 1/2" OR MORE VERTICAL RISE ARE TO BE TRAPPED FOR PROPER OR RETURN.
3. THE REFRIGERANT COPPER CONNECTIONS SHALL BE SOLDERED. COPPER TO COPPER CONNECTIONS USE SILCO-GO, SOLDER SHALL NOT BE USED FOR REFRIGERANT PIPING.
4. ALL ROUNDPIN PIPING SHALL BE PRESSURE TESTED WITH 100 PSI OF NITROGEN AT 100°F FOR 10 MINUTES. A WARNING OF AIR HOLES SHALL BE GIVEN TO THE FIELD PERSONNEL. ALL ROUNDPIN PIPING SHALL BE CLEANED AND DRYED OUT WITH NITROGEN.
5. ALL REFRIGERANT COPPER PIPING SHALL BE CLEANED AND DRYED OUT WITH NITROGEN.
6. ALL COMPLETED REFRIGERANT PIPING SHALL BE VACUUMED TO 100 MICRONS OR LESS WITH VACUUM PUMP.
7. PURGER AND BUTTLE A 4 WATT PER FT. 220V HEATER VALVE ON WALK-IN FREEZER DRAIN.
8. ALL COILS SUPPORTED BY OTHER MEANS HAVE EXHAUST TAPS OR MOUNTED INSIDE THE REFRIGERANT CASE ON EACH SECTION.
9. ALL FIELD PIPING SUPPORTS ARE TO HAVE PLASTIC BUSHINGS BETWEEN CLAMPS AND PIPING. NO COPPER TO STEEL CONTACT PERMITTED.
10. OWNER TAKES NOT RESPONSIBLE FOR THE SHIPPING.

1. ELECTRICAL CONTRACTOR (SECTION 18) IS TO PROVIDE POWER FOR REFRIGERATION RACK AND ALL COILS. ELECTRICAL CONNECTION REQUIRED FOR RACK CONTROL PANEL AND DEFROST SYSTEMS AS PER THE WIRING DIAGRAM.
2. ELECTRICAL CONTRACTOR (SECTION 18) TO PROVIDE 5-WIRE COLOR CODED SERVICE FROM THE TIMECLOCK AT THE REFRIGERATION PACKAGE TO BLOWER COILS IN THE FUTURE FOR AUTOMATIC DEFROST, UNLESS THE FUTURE INDICATOR OTHERWISE.
3. ALL ELECTRICAL WIRES AND INSTALLATIONS SHALL BE IN ACCORDANCE WITH THE WIRING DIAGRAM AND LOCAL CODES.
4. ELECTRICAL CONTRACTOR (SECTION 18) TO PROVIDE ANY DISCONNECT SWITCH REQUIRED BY LOCAL CODES.
5. FOR F.V.I. ITEMS, THERMOSTAT AND SENSING WIRE TO COIL BY FIELD ELECTRICIAN.
6. FIELD ELECTRICIAN TO CONNECT COPPER ELECTRICAL LINES TO RACK SYSTEM.

1. PLUMBING CONTRACTOR (OR JEON 15) TO PROVIDE HANG ACAR OR TYPE "L" COPPER CONDENSATE DRAIN LINES TO KITCHEN FREEZERS AND REFRIGERATORS. PITCH TO BE MINIMUM OF 1/2 PER CENT FOR RUN IN FREEZERS. DRAIN LINES IN FREEZERS MUST BE INSTALLED TO PREVENT FLOODING. DRAIN LINES MUST BE TRAPPED OUTSIDE OF BOX TO AVOID ENTRANCE OF WARM AIR. PROVIDE INDIVIDUAL DRAIN LINES FOR EACH EVAPORATOR, UNLESS OTHERWISE INDICATED.
2. PLUMBING CONTRACTOR (OR JEON 15) TO VERIFY THE METHOD USED AND LOCATION FOR FIXTURE DRAINS. WHEN REQUIRED, INSTALLATION OF DRAIN LINES IN WALL SHOULD BE DONE BEFORE THE WALL IS CLOSED OFF.

[illegible]

ETL LISTED  
CONFORMS TO  
UL STD 1995

OmniTemp

UNION MADE

RACK OVERALL DIMENSIONS		
LENGTH (INCHES)	WIDTH (INCHES)	HEIGHT (INCHES)
180	78	88

MODEL: OTBL8-AC-V

ISOMETRIC

4" CLEARANCE

4" CLEARANCE

4" CLEARANCE

4" CLEARANCE

Diagram illustrating the dimensions and components of the 1600 Series Rack. The rack is shown with an electrical panel on the left side. The dimensions are as follows:

- Overall width: 15'-4" (184") CURB
- Overall width: 15'-0" (180") O.D.
- Overall width: 14'-0" (168") RACK
- Overall height: 6'-0" (72") RACK
- Overall height: 6'-6" (78") O.D.
- Overall height: 7'-4" (88") CURB

The rack contains eight fans arranged in two rows of four. The electrical panel is labeled "ELECTRICAL PANEL".

## ELEVATION

NO.	REVISION
A	Initial Design Release to Schulz Associates (Jeffrey Schulz) #ENG 1-16-25
A1	Submittal Release to Borggreen Ellingson (Michelle Holm) PO#2837601

# Puyallup School Tuc System

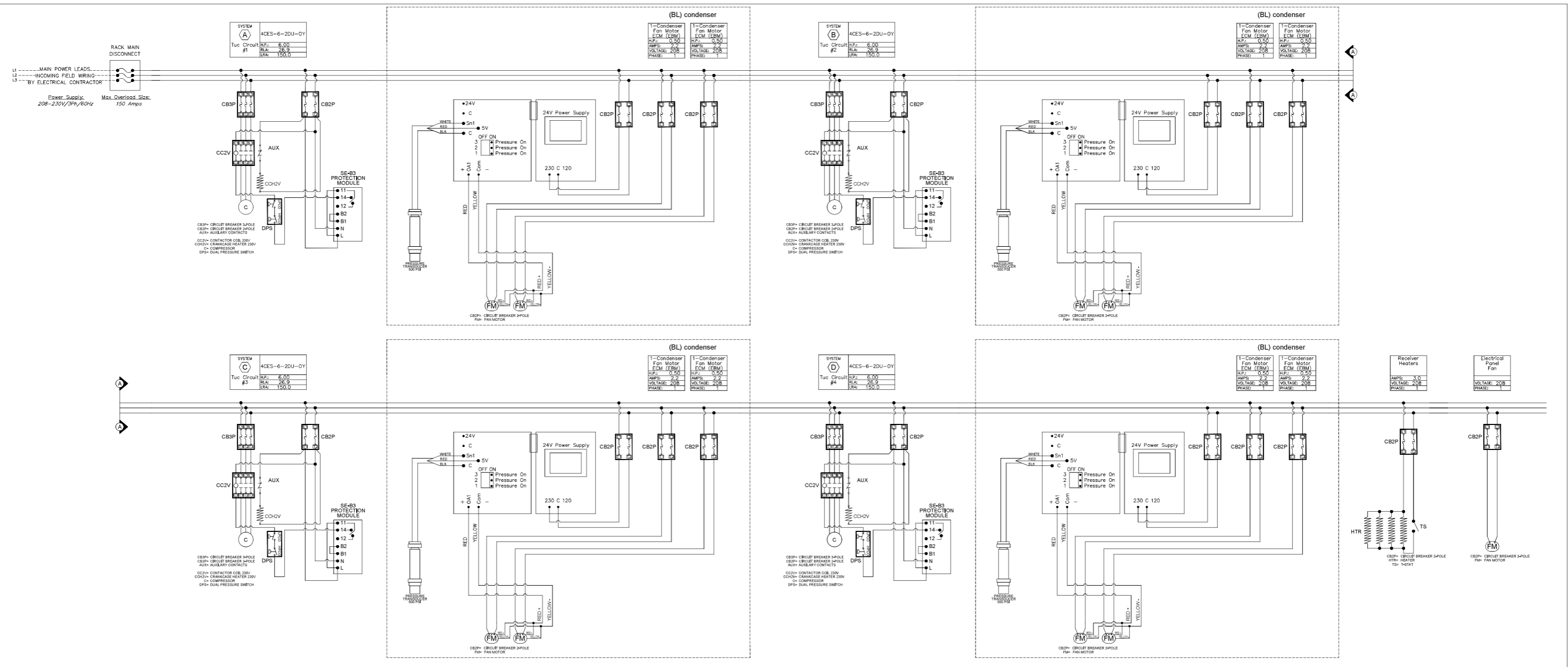
## Puyallup, WA

### Refrigeration Plan

DATE: 01/17/25	JOB #: 18258-R
SCALE: <b>None</b>	
DESIGNED BY: <b>Hans Haasis, Jr.</b>	
DRAWN BY: <b>Albert Lamug</b>	

SHEET NUMBER:  
R1  
of  
2

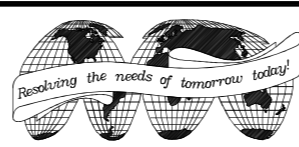
REMOTE REFRIGERATION INTERNAL WIRING DIAGRAM



PRMH20250723

THIS PLAN IS PRIMARILY A GENERAL ARRANGEMENT OF EQUIPMENT FOR THE CONVENIENCE OF CONTRACTORS AND IS MADE FROM AVAILABLE INFORMATION. BUT MEASUREMENTS ARE TO BE VERIFIED ON THE JOB. PLUMBING, ELECTRICAL, REFRIGERATION, AND VENT OUTLETS HAVE BEEN LOCATED AS ACCURATELY AS POSSIBLE AND ARE INTENDED TO SUIT EQUIPMENT TO BE SUPPLIED. WE ACCEPT NO RESPONSIBILITY FOR WORK DONE BY SAID CONTRACTORS AND WILL NOT STAND ANY EXPENSE FOR CHANGES MADE NECESSARY BY LOCAL BUILDING CODES, ORDINANCES, STRUCTURAL CONDITIONS, OR BY THE SUBSTITUTION OR CHANGES IN EQUIPMENT SHOWN ON THIS PLAN. THIS DRAWING IS THE PROPERTY OF OMNITEAM INCORPORATED. IT IS NOT TO BE REPRODUCED OR DISTRIBUTED, EITHER IN WHOLE OR IN PART.

NO.	REVISION	DATE	BY	NO.	REVISION	DATE	BY
A	Initial Design Release to Schultz Associates (Jeffrey Schult)	01/20/25	APL				
A1	Submittal Release to Borggreen Elingson (Michele Holm)	02/25/25	APL				



**OmniTeam, Inc.**  
Manufacturer of OmniTemp Refrigeration Products  
4380 Ayers Avenue, Vernon, California 90058  
(800) 423-9660 (Toll-Free) - (562) 862-7466 (Fax)  
Web page address: [www.omniteaminc.com](http://www.omniteaminc.com)  
E-Mail: [AlbertL@omniteaminc.com](mailto:AlbertL@omniteaminc.com)

**Puyallup School Tuc System**  
**Puyallup, WA**  
**Refrigeration Plan**

DATE: 01/17/25  
SCALE: None  
DESIGNED BY: Hans Haasis, Jr.  
DRAWN BY: Albert Lamug

JOB #: 18258-R  
SHEET NUMBER: **R2 of 2**