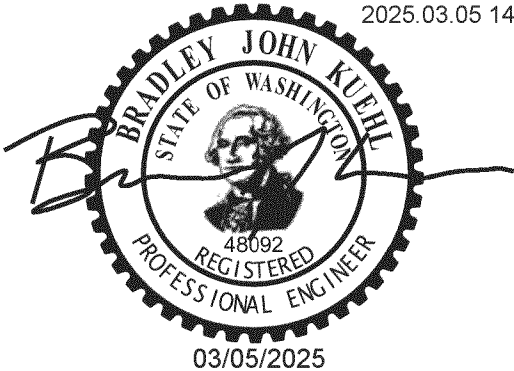


McDONALD's TRELLIS

Bradley Kuehl
2025.03.05 14:28:10-06'00'



RICE
ENGINEERING

105 School Creek Trail
Luxemburg, WI 54217
Phone: (920)-617-1042
Fax: (920)-617-1100
www.rice-inc.com

This Certification is limited to the structural design of the structural components of this sunshade system. It does NOT include responsibility for:

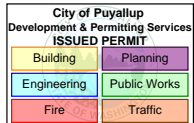
- * Structural design of glass lites, gaskets, and sealants.
- * Design of air and water infiltration prevention
- * The manufacture, assembly, or installation of the system.
- * Quantities of materials or dimensional accuracy of drawings.

CUSTOMER SUPPORT INFORMATION

SALES SUPPORT, SHIPPING INFORMATION
JANET KASPRZYCKI: 715-355-2435
ENGINEERING, TECHNICAL SUPPORT
ANDREW PEDERSON: 715-241-6189
ARCHITECTURAL@GREENHECK.COM

**City of Puyallup
Building
REVIEWED
FOR
COMPLIANCE**

SKinnear
04/16/2025
1:53:40 PM



PUYALLUP, WA. SSC 461180

Approval of submitted plans is not an approval of omissions or oversights by this office or non compliance with any applicable regulations of local government. The contractor is responsible for making sure that the building complies with all applicable codes and regulations of the local government.

The approved construction plans, documents, and all engineering must be posted on the job at all inspections in a visible and readily accessible location.

Full sized legible color plans are required to be provided by the permittee on site for inspection.

PREPARED BY:



PO Box 410, Schofield, WI 54476-0410 USA
www.greenheck.com

Separate Electrical Permit is required with the Washington State Department of Labor & Industries.
<https://lni.wa.gov/licensing-permits/electrical/electrical-permits-fees-and-inspections>
or call for Licensing Information:
1-800-647-0982

*****TIME SENSITIVE INFORMATION*****
Review & Approval Required Prior to Fabrication

Approved By _____

Approval Date _____

Requested On-Site Date _____

On-Site Contact _____

On-Site Contact Phone # _____

On-Site Email _____

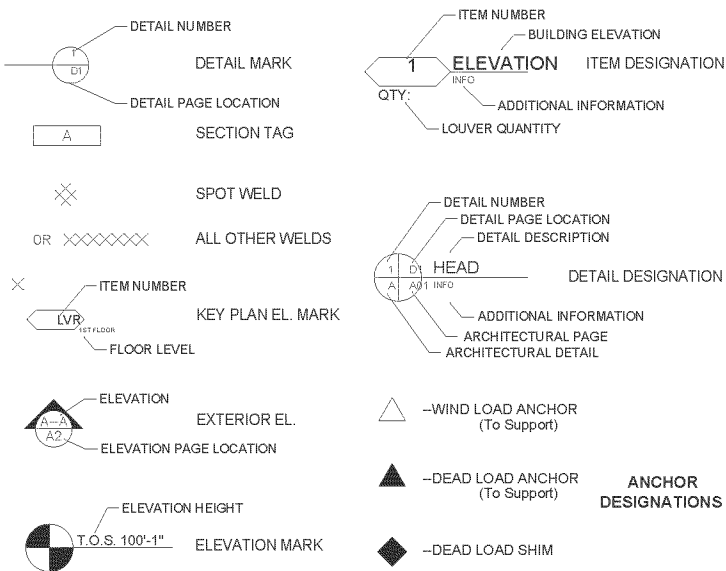
PRCNC20241917

PROPRIETARY INFORMATION NOTICE
This document is and contains confidential trade secret information of Greenheck Fan and is to be returned upon request. Neither it nor the information it contains may be reproduced or disclosed to persons not having a need-to-know consistent with the purpose of loan of the document without written permission.



P.O. BOX 410
SCHOFIELD, WISCONSIN
54476-0410

SYMBOLS



DESIGN LOADS

THE DESIGN LOAD FOR THIS TRELLIS IS --- PSF
THE SPECIFICATION SECTION IS PER QUOTE

ABBREVIATIONS

AFF	ABOVE FINISH FLOOR	NA	NOT AVAILABLE
ALUM	ALUMINUM	NTS	NOT TO SCALE
CL	CENTER LINE	OC	ON CENTER
COL	COLUMN LINE	OD	OUTSIDE DIAMETER
CONT	CONTINUOUS	OPP	OPPOSITE
DIA	DIAMETER	PROD	PRODUCT
DLO	DAYLIGHT OPENING	PSF	POUNDS PER SQUARE FT
EL	ELEVATION	QTY	QUANTITY
EXT	EXTERIOR	RO	ROUGH OPENING
FTM	FINISH TO MATCH	SECT	SECTION
GAL	GAUGE	SH	SECTION HEIGHT
GALV	GALVANIZED	SL	SHIPPED LOOSE
GC	GENERAL CONTRACTOR	SMS	SHEET METAL SCREW
GFC	GREENHECK FAN CORP	SS	STAINLESS STEEL
GH	GRILLE HEIGHT	SW	SECTION WIDTH
GVNL	GALVANNEAL	SSW	SUNSHADE WIDTH
GW	GRILLE WIDTH	SSH	SUNSHADE HEIGHT
ID	INSIDE DIAMETER	TOS	TOP OF STEEL
INT	INTERIOR	TYP	TYPICAL
KD	KNOCK DOWN	U/F	USED IN FABRICATION
LH	LOUVER HEIGHT	UNO	UNLESS NOTED OTHERWISE
LW	LOUVER WIDTH	VIF	VERIFY IN FIELD
MIN	MINIMUM		

CONFLICTS, ERRORS, AND CHANGES

Shop drawings incorporate Greenheck Fan's best interpretation of the contract documents received and are provided for your convenience in securing (1) design review and approval; and, (2) field verified or guaranteed quantities, dimensions and conditions. Fabrication cannot begin until each of the following sections is executed and received by Greenheck Fan. Greenheck Fan is not responsible for conflicts between shop drawings, contract drawing details and field conditions, or human errors, unless directed in writing by review comments on shop drawings. Design changes that require revisions to shop drawings will result in additional costs for delays, interruptions and additional labor and material costs incurred as a result of the change.

Design Review & Approval

Design review and approval is represented by execution of the following section by an authorized design professional.

☐ Approved for Fabrication ☐ Approved for Fabrication as Noted ☐ Revise and Resubmit

By: _____ Date: _____

Field Verified or Guaranteed Quantities & Dimensions

Execution represents that quantities and dimensions are Field Verified or Guaranteed and that Greenheck Fan is authorized to fabricate in strict accordance with these details and any corrections hereon noted.

☐ Release for Fabrication in Accordance with Greenheck Fan's current production schedule. ☐ Hold Fabrication Until Further Notice.

By: _____ Date: _____

Coordination-Field Conditions & Other Trades

Execution represents that coordination of shop drawing details with field conditions and work by other trades is completed and Greenheck Fan is authorized to fabricate in strict accordance with these details and any corrections hereon noted. Coordination is defined to include all field conditions and work by other trades including, but not limited to, coordination of louver screen and blank-off panel sizes and locations with HVAC scope & identification of interferences of louver supports with structural supports or diagonal bracing.

By: _____ Date: _____

ARCHITECT AND GENERAL CONTRACTOR

- All structural steel reinforcing required to support large sections or multiple sections within a large opening are not provided by Greenheck Fan unless otherwise noted on these drawings. It is the responsibility of the structural engineer to insure that all loading requirements are sufficient.
- Anchors, shims backer rod and sealants are not by Greenheck Fan unless noted otherwise.
- All fasteners are mill finish unless noted otherwise.
- Field verification and/or field measurements will not be the responsibility of Greenheck Fan. The general contractor will indicate to Greenheck Fan that all dimensions have been verified and approved.
- "Please Verify" requests not answered will be assumed correct as shown. Any future problems due to these verifications not being completed will not be the responsibility of Greenheck Fan.
- Erector/Contractor accepts responsibility for the performance of the louver system if such is not installed per Greenheck Fan drawings and specifications.
- Separation of dissimilar material is not by Greenheck Fan.
- If product is welded, some deformation due to heat & weld penetration must be expected.
- To avoid damage or bodily injury, DO NOT LEAN, STEP, OR WALK ON TRELLIS FRAMES OR PANELS. These are NOT MEANT TO BE LOAD BEARING for the purposes of installation or maintenance.

PRODUCT SPECIALIST

JANET KASPRZYCKI

ENGINEERING

DRAWN BY: A. PEDERSON DATE: 12/12/24
SUBMISSION: ---
PRODUCTION: ---
CHECKED BY: --- DATE: ---
SUBMISSION: ---
PRODUCTION: ---

DRAWING INDEX:

COVER & INFO: C1 - C2
PLAN VIEWS & KEY PLANS: P1
ELEVATIONS: E1
DETAILS: D1-D6

PROJECT: McDONALD'S TRELLIS

PROJECT LOCATION: PUYALLUP, WA. SSC 461180

REP COMPANY: GREENHECK NATIONAL ACCOUNT

CUSTOMER: McDONALD'S

ARCHITECT: ---

SHEET DESCRIPTION:

COVER SHEET

SALES ORDER NUMBER:

LOUVER SDR NO.:

L2401075

DRAWING NO.:

C1

City of Puyallup
Development & Permitting Services
ISSUED PERMIT

Building

Planning

Engineering

Public Works

Fire

Traffic

PRODUCT TYPE
CANOPY
EXTRUDED ALUMINUM ARCHITECTURAL LOUVER

FRAME TYPE 2"x8"x.125" ALUM. TUBE
MATERIAL ALLOY..... EXTRUDED ALUMINUM ALLOY (VARIES)
FASCIA TYPE 3.125"x8.406"x.125" ALUM. CHNL
ALLOY..... EXTRUDED ALUMINUM ALLOY (6063-T5)
TURNBUCKLES 0.125" ALUM (6063-T5)
CONSTRUCTION METHOD SCREWED/WELDED
FINISH METHOD..... POWDER COAT
COLOR.....VARIES

FINISH SCHEDULE
####

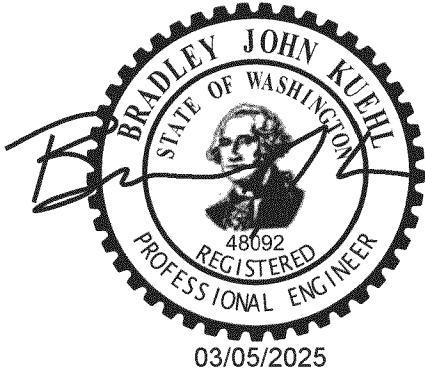
FINISH - A: CHANTILLY LACE
FINISH - B: UMBRA GRAY
FINISH - C: GOLD
FINISH - D: ---

GREENHECK PROJECT NUMBERS
PROJECT NAME

SALES ORDER NUMBER:	----	DESIGN PROJECT #1:	----
		DESIGN PROJECT #2:	----
LOUVER SDR NUMBER:	L2401075	DESIGN PROJECT #3:	----
		DESIGN PROJECT #4:	----

	/			
	/			
	/			
	/			
	/			
	/			
	/			
	/			
PDF	12/12/ 2024	MCDONALDS	SEE INDEX, PAGE C1	1st SUB
COPIES	DATE	ISSUED TO	SHEETS	PURPOSE
PRINT RECORD				

PARTS INDEX	
<u>Fasteners:</u> F9 - Screw, #10-16x3/4 300 Series Stainless, TPH, SM (416108) F76 - Screw, 0.25-14X1, SS, 18-8, TEK HWH (417697) F78 - Screw, #10-16x1 18-8SS, TFH, T-AB, U/C (416907) F111 - Nut, 3/8-16 Hex, 300 Series Stainless (415799) F113 - Nut, 1/2-13 300 Series Stainless, HH (415802) F146 - Washer, 1/2SS (416629) F147 - Washer, 3/8-18-8SS (416425) F190 - Anchor Rod, 0.375" x 16.000" RH SS (416888) F231 - F250 (GENERIC FASTENER NUMBERS: REF CUSTOM PARTS.) F394 - Screw, TEK, #12-14x.75,18-8SS, HWH (417152)	
<u>OEM Parts:</u> MD54 - Trellis Hood, 0.100", 1100-H14 Alum	
<u>Miscellaneous:</u> M44 - Wall Condition (Not By GFC) M54 - Blocking Design & Minimum Embedment (Not By GFC)	
<u>Fasteners:</u> F231 - Cap Screw, 1/2-13 x 2.000, 300 Series Stainless HH (415783) F232 - Washer, Lock, Split, .5, SS 316 (415809) F233 - MS, HH, .25-20X2.5,SS, 18-8 (416380)	



PRCNC20241917


PROPRIETARY INFORMATION NOTICE:
This document is and contains confidential trade secret information of Greenheck Fan and is to be returned upon request. Neither it nor the information it contains may be reproduced or disclosed to persons not having a need-to-know consistent with the purpose of loan of the document without written permission.

GREENHECK
P.O. BOX 410
SCHOFIELD, WISCONSIN 54476-0410

PROJECT: MCDONALDS TRELLIS
PROJECT LOCATION: PUYALLUP, WA, SSC 461180
REP COMPANY: GREENHECK NATIONAL ACCOUNT
CUSTOMER: MCDONALDS
ARCHITECT: ---

SCALED WHEN PLOTTED ON 11" SIZE N/A	11" SIZE N/A
SHEET DESCRIPTION: SCHEDULE & MATERIALS	
SUBMISSIONS DRAWN BY: A. PEDERSON	
PRODUCTION DRAWN BY: ----	
SALES ORDER NUMBERS: ----	
LOUVER SDR NO.: L2401075	
DRAWING NO.: C2	

TRELLIS
 TAG:
 QUANTITY: 1
 UMBRA GRAY W/ GOLD UNDERSCORE

TRELLIS
 TAG:
 QUANTITY: 1
 UMBRA GRAY W/ GOLD UNDERSCORE

TRELLIS
 TAG:
 QUANTITY: 1
 UMBRA GRAY W/ GOLD UNDERSCORE

NOTE:
FLOOR PLAN DRAWN FOR TRELLIS LOCATION
REFERENCE ONLY. DO NOT SCALE OFF OF THIS
DRAWING FOR BUILDING SIZE OR
SPECIFICATIONS.

PRCNC20241917

PROPRIETARY INFORMATION NOTICE:

This document is and contains confidential trade secret information of Greenheck Fan and remains the property of Greenheck Fan and is to be returned upon request. Neither it nor the information it contains may be reproduced or disclosed to persons not having a need-to-know consistent with the purpose of loan of the document without written permission.

GREENHECK
P.O. BOX 410
SCHOFIELD, WISCONSIN
54476-0410

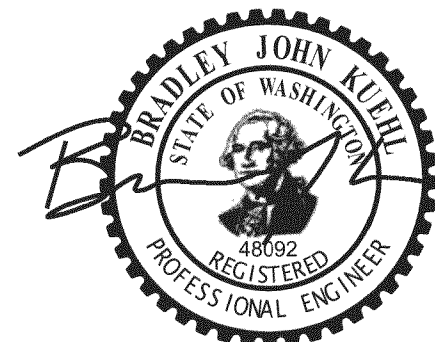
PROJECT: MCDONALDS TRELLIS
PROJECT LOCATION: PUYALLUP, WA, SSC 461180
PREP COMPANY: GREENHECK NATIONAL ACCOUNT
CUSTOMER: MCDONALDS
ARCHITECT: ---

SCALED WHEN PLOTTED ON	
"D" SIZE	"B" SIZE
1:50	####
SHEET DESCRIPTION:	
PLAN VIEW	
SUBMISSION DRAWN BY:	
A. PEDERSON	
PRODUCTION DRAWN BY:	

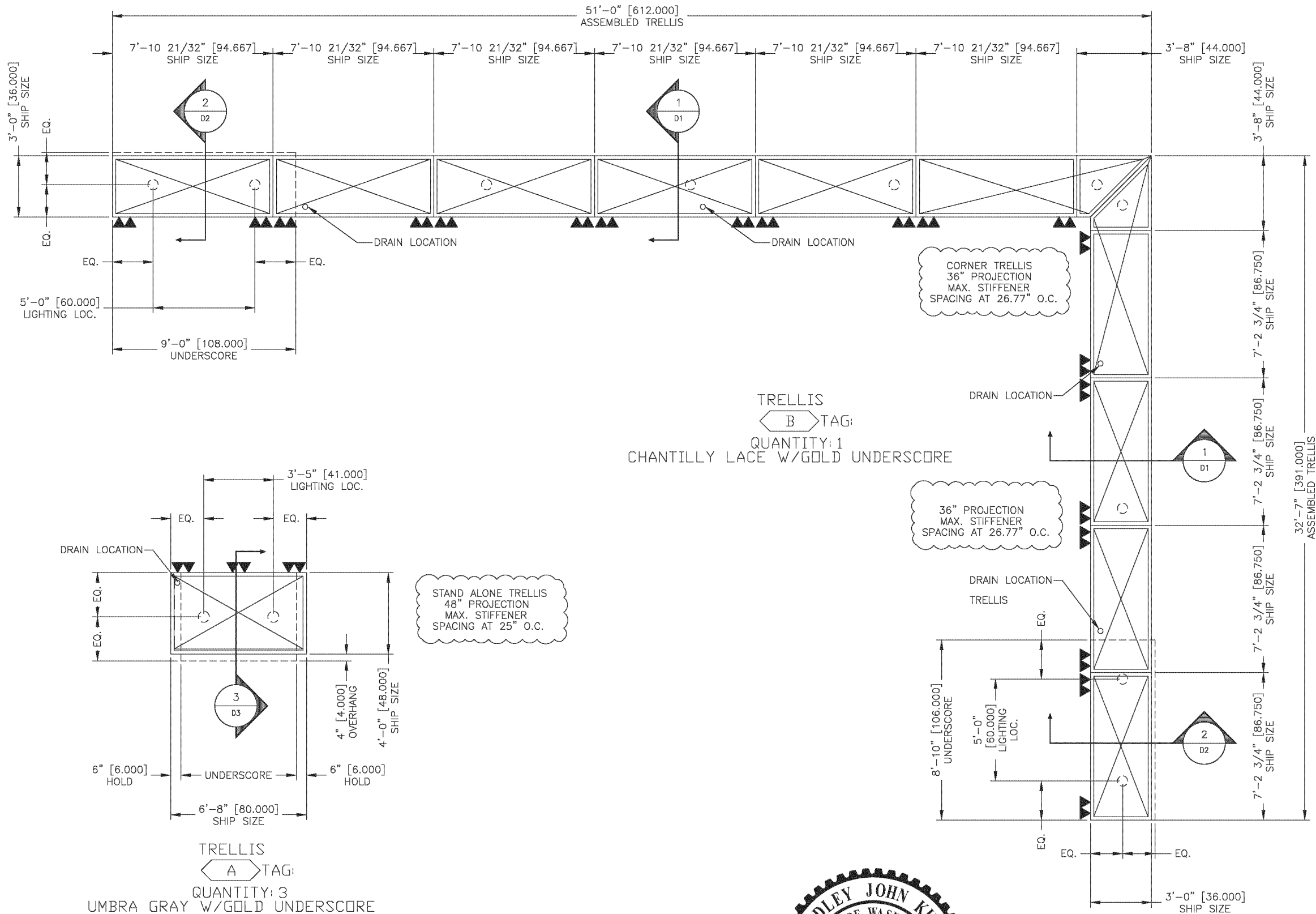
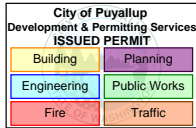
SALES ORDER NUMBERS:	

LOUVER SDR NO.:	
L2401075	
DRAWING NO.:	
P1	

COPYRIGHT 2006, GREENHECK FAN CORPORATION

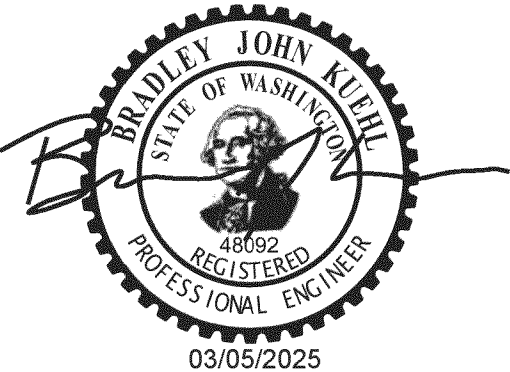


03/05/2025



▲ - DEAD LOAD ANCHOR
▼ - OFFSET DEADLOAD ANCHOR
RECOMMENDED ANCHOR LOCATIONS. GREENHECK DOES NOT SUPPLY ANY SHIM MATERIALS!

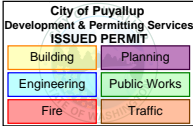
⊠ = REPRESENTS PANEL LOCATIONS



PRCNC20241917

PROJECT: MCDONALDS TRELLIS		PROPRIETARY INFORMATION NOTICE: This document is and contains confidential trade secret information of Greenheck Fan and is to be returned upon request. Neither it nor the information it contains may be reproduced or disclosed to persons not having a need-to-know consistent with the purpose of loan of the document without written permission.	
PROJECT LOCATION: PUYALLUP, WA. SSC 461180		GREENHECK P.O. BOX 410 SCHOFIELD, WISCONSIN 54476-0410	
REP COMPANY: GREENHECK NATIONAL ACCOUNT		CUSTOMER: MCDONALDS	
SALES ORDER NUMBERS:		ARCHITECT: ---	
LOUVER SDR NO.: L2401075		REVISION BY: ---	
DRAWING NO.: E1		REV. DATE: ---	
SHEET DESCRIPTION: ELEVATIONS SUBMISSION DRAWN BY: A. PEDERSON PRODUCTION DRAWN BY: ---		REV. NO.:	
SCALED WHEN PLOTTED ON "D" SIZE 3/8"-1'-0" "S" SIZE 1/4"-1/2"		REVISION DESCRIPTION	

PLOTTED: 3/5/2025 2:02:45 PM

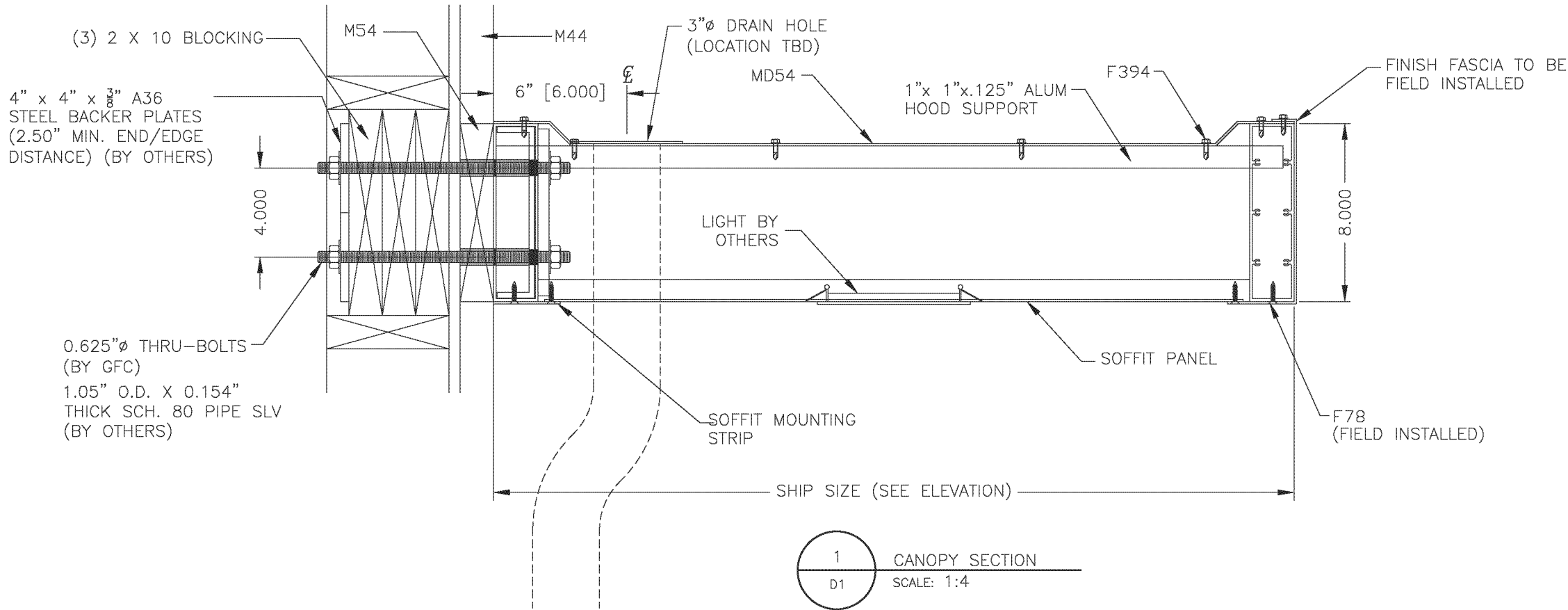
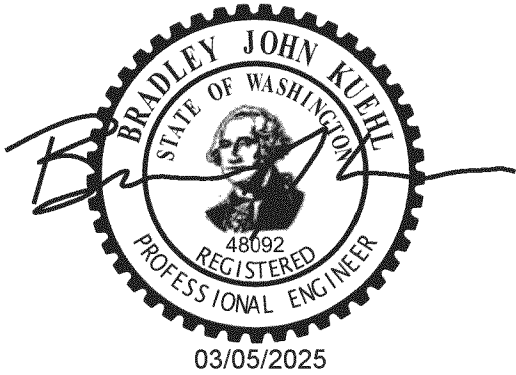


PARTS INDEX

Fasteners:
F78 - Screw, #10-16x1 18-8SS, TFH, T-AB, U/C (416907)
F394 - Screw, TEK, #12-14x.75,18-8SS, HWH (417152)

OEM Parts:
MD54 - Trellis Hood, 0.100", 1100-H14 Alum

Miscellaneous:
M44 - Wall Condition (Not By GFC)
M54 - Blocking Design & Minimum Embedment (Not By GFC)



PRCNC20241917

PROPRIETARY INFORMATION NOTICE
This document is and contains confidential trade secret information of Greenheck Fan Corporation and is the property of Greenheck Fan Corporation. It is to be returned upon request. Neither it nor the information it contains may be reproduced or disclosed to persons not having a need-to-know consistent with the purpose of loan of the document without written permission.



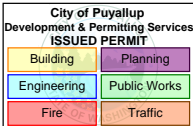
PROJECT: MCDONALDS TRELLIS
PROJECT LOCATION: PUYALLUP, WA. SSC 461180
REP COMPANY: GREENHECK NATIONAL ACCOUNT
CUSTOMER: MCDONALDS
ARCHITECT: ---

SCALED WHEN PLOTTED ON
"D" SIZE 1:4
"B" SIZE ###
SHEET DESCRIPTION:
DETAIL
SUBMISSION DRAWN BY:
A. PEDERSON
PRODUCTION DRAWN BY:

SALES ORDER NUMBERS:

LOUVER SDR NO.:
L2401075
DRAWING NO.:
D1

PLOTTED: 3/5/2025 2:02:45 PM

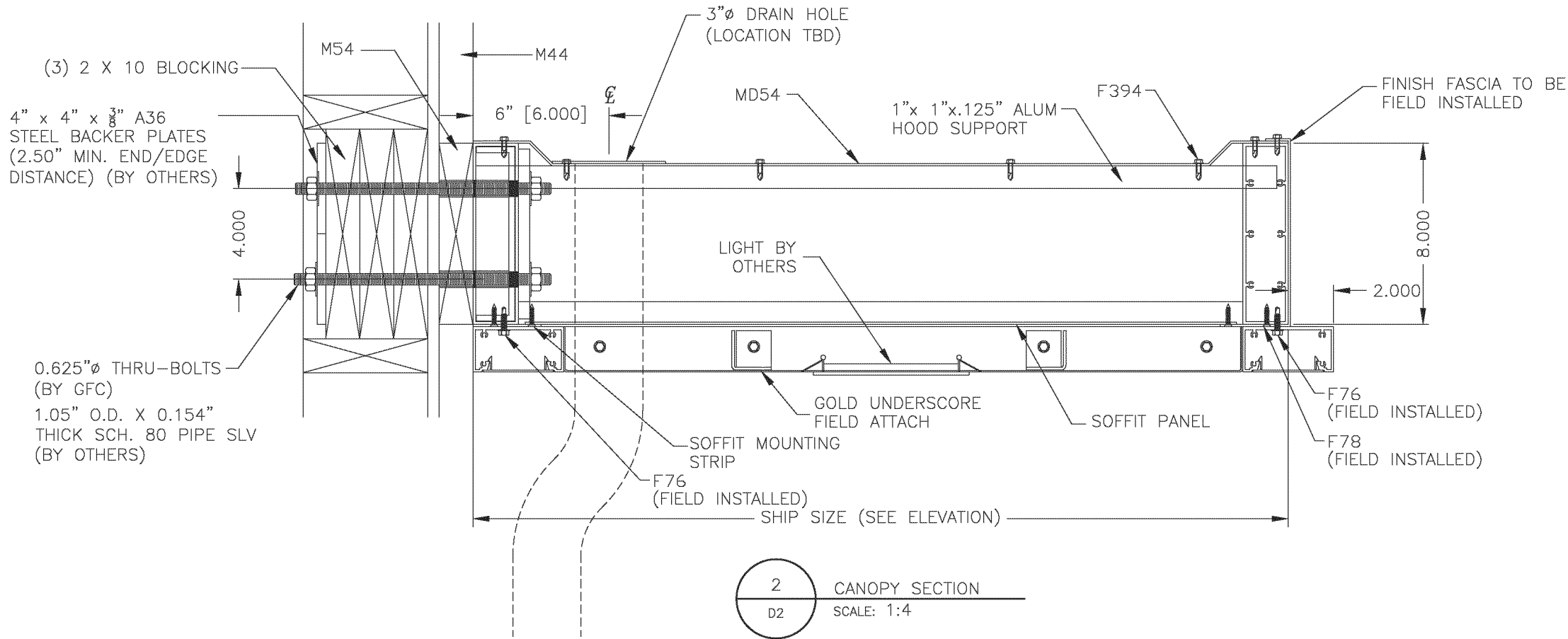
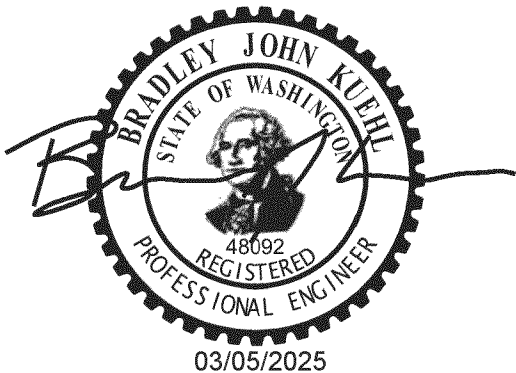


PARTS INDEX

Fasteners:
F76 - Screw, 0.25-14X1, SS, 18-8, TEK HWH (417697)
F78 - Screw, #10-16x1 18-8SS, TFH, T-AB, U/C (416907)
F394 - Screw, TEK, #12-14x.75,18-8SS, HWH (417152)

OEM Parts:
MD54 - Trellis Hood, 0.100", 1100-H14 Alum

Miscellaneous:
M44 - Wall Condition (Not By GFC)
M54 - Blocking Design & Minimum Embedment (Not By GFC)



PRCNC20241917

PROPRIETARY INFORMATION NOTICE
This document is and contains confidential trade secret information of Greenheck Fan and is to be returned upon request. Neither it nor the information it contains may be reproduced or disclosed to persons not having a need-to-know consistent with the purpose of loan of the document without written permission.



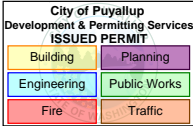
PROJECT: MCDONALDS TRELLIS
PROJECT LOCATION: PUYALLUP, WA, SSC 461180
REP COMPANY: GREENHECK NATIONAL ACCOUNT
CUSTOMER: MCDONALDS
ARCHITECT: ---

SCALED WHEN PLOTTED ON
"D" SIZE 1:4 "B" SIZE ###
SHEET DESCRIPTION:
DETAIL
SUBMISSION DRAWN BY:
A. PEDERSON
PRODUCTION DRAWN BY:

SALES ORDER NUMBERS:

LOUVER SDR NO.:
L2401075
DRAWING NO.:
D2

PLOTTED: 3/5/2025 2:02:46 PM



PARTS INDEX

Fasteners:

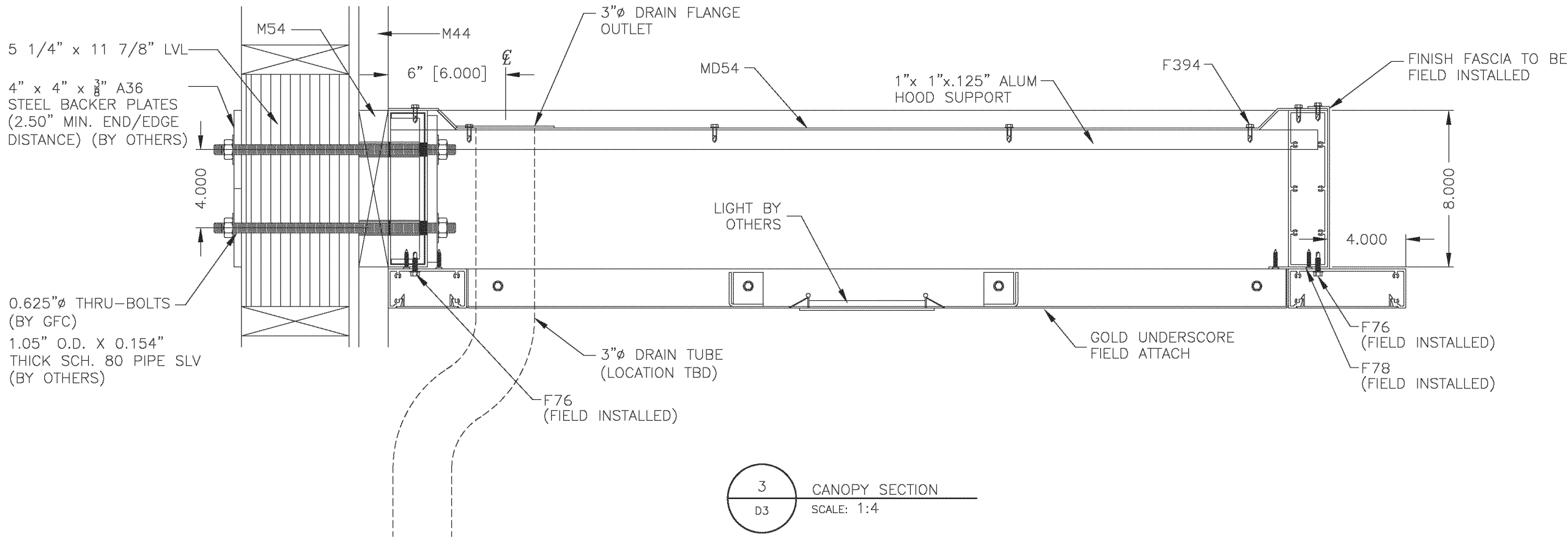
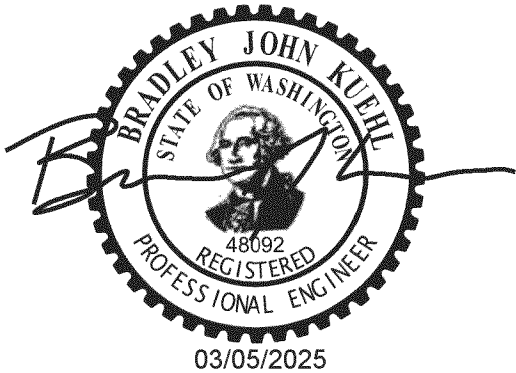
F76 - Screw, 0.25-14X1, SS, 18-8, TEK HWH (417697)
F78 - Screw, #10-16x1 18-8SS, TFH, T-AB, U/C (416907)
F394 - Screw, TEK, #12-14x.75,18-8SS, HWH (417152)

OEM Parts:

MD54 - Trellis Hood, 0.100", 1100-H14 Alum

Miscellaneous:

M44 - Wall Condition (Not By GFC)
M54 - Blocking Design & Minimum Embedment (Not By GFC)



3
D3

CANOPY SECTION
SCALE: 1:4

PROPRIETARY INFORMATION NOTICE
This document is and contains confidential, trade secret information of Greenheck Fan Corporation and is the property of Greenheck Fan Corporation. It is to be returned upon request. Neither it nor the information it contains may be reproduced or disclosed to persons not having a need-to-know consistent with the purpose of loan of the document without written permission.

PRCNC20241917



PROJECT: MCDONALDS TRELLIS
PROJECT LOCATION: PUYALLUP, WA, SSC 461180
REP COMPANY: GREENHECK NATIONAL ACCOUNT
CUSTOMER: MCDONALDS
ARCHITECT: ---

SCALED WHEN PLOTTED ON
"D" SIZE 1:4 "B" SIZE #####
SHEET DESCRIPTION:
DETAILS
SUBMISSION DRAWN BY:
A. PEDERSON
PRODUCTION DRAWN BY:

SALES ORDER NUMBERS:

LOUVER SDR NO.:
L2401075
DRAWING NO.:
D3

PLOTTED: 3/5/2025 2:02:46 PM

City of Puyallup
Development & Permitting Services
ISSUED PERMIT

Building

Planning

Engineering

Public Works

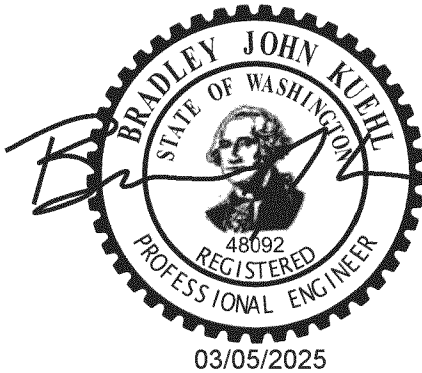
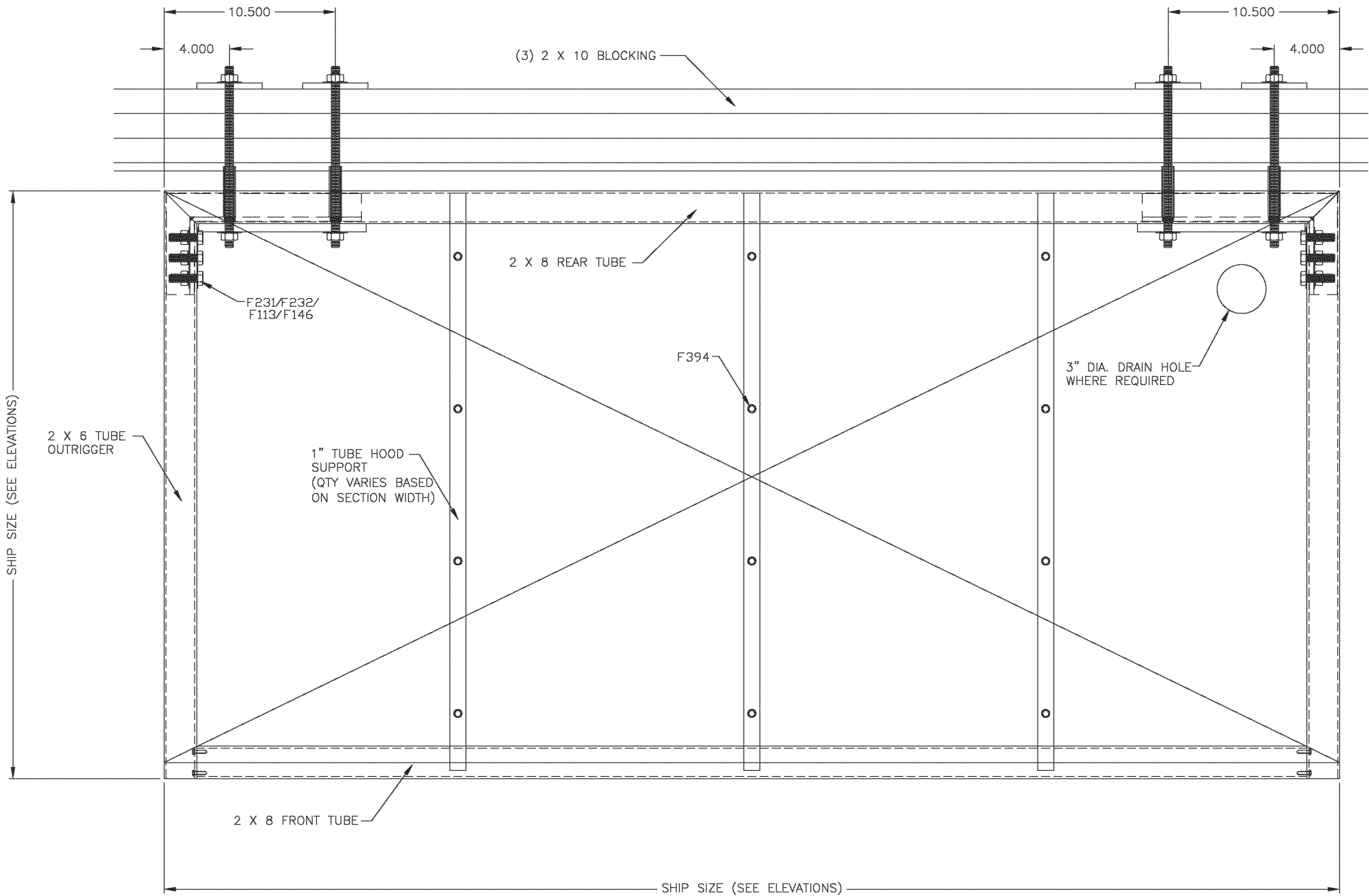
Fire

Traffic

PARTS INDEX

- Fasteners:**
F113 - Nut, 1/2-13 300 Series Stainless, HH (415802)
F146 - Washer, 1/2SS (416629)
F231 - F250 (GENERIC FASTENER NUMBERS: REF CUSTOM PARTS.)
F394 - Screw, TEK, #12-14x.75,18-8SS, HWH (417152)
- Fasteners:**
F231 - Cap Screw, 1/2-13 x 2.000, 300 Series Stainless HH (415783)
F232 - Washer, Lock, Split, .5, SS 316 (415809)

CONTINUOUS RUN CANOPY



PRCNC20241917

PROPRIETARY INFORMATION NOTICE
This document is and contains confidential trade secret information of Greenheck Fan and is to be returned upon request. Neither it nor the information it contains may be reproduced or disclosed to persons not having a need-to-know consistent with the purpose of loan of the document without written permission.

GREENHECK
P.O. BOX 410
SCHOFIELD, WISCONSIN 54476-0410

PROJECT: MCDONALDS TRELLIS
PROJECT LOCATION: PUYALLUP, WA, SSC 461180
REP COMPANY: GREENHECK NATIONAL ACCOUNT
CUSTOMER: MCDONALDS
ARCHITECT: ---

SCALED WHEN PLOTTED ON
1" SIZE 1/4" SIZE
SHEET DESCRIPTION:
DETAIL
SUBMISSION DRAWN BY:
A. PEDERSON
PRODUCTION DRAWN BY:
SALES ORDER NUMBERS:
LOUVER SDR NO.:
L2401075
DRAWING NO.:
D4

PLOTTED: 3/5/2025 2:02:46 PM

City of Puyallup
Development & Permitting Services
ISSUED PERMIT

Building

Planning

Engineering

Public Works

Fire

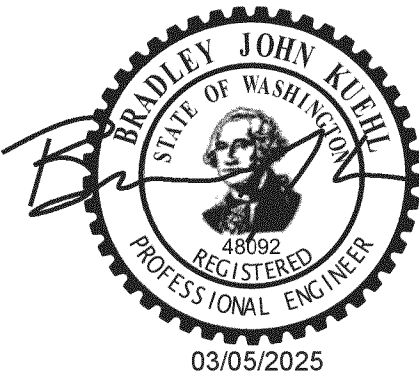
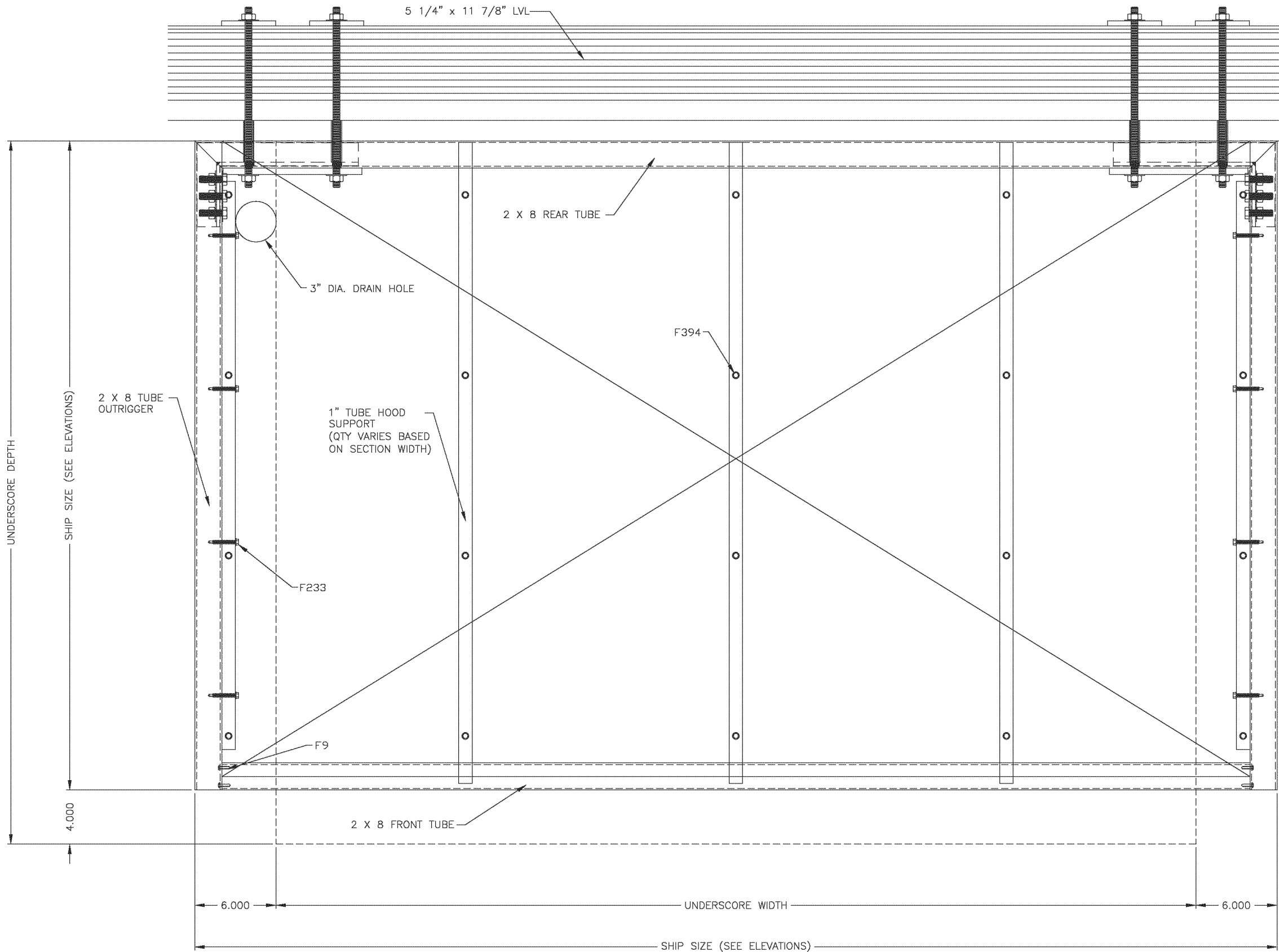
Traffic

SINGLE CANOPY W/
UNDERScore

PARTS INDEX

Fasteners:
F9 - Screw, #10-16x3/4 300 Series Stainless, TPH, SM (416108)
F394 - Screw, TEK, #12-14x.75,18-8SS, HWH (417152)

Fasteners:
F233 - MS, HH, .25-20X2.5,SS, 18-8 (416380)



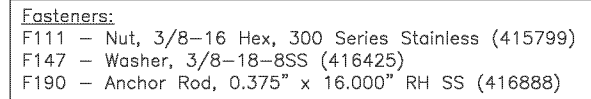
PRCNC20241917

PROPRIETARY INFORMATION NOTICE:
This document is and contains confidential trade secret information of Greenheck Fan Corporation and is to be returned upon request. Neither it nor the information it contains may be reproduced or disclosed to persons not having a need-to-know consistent with the purpose of loan of the document without written permission.

GREENHECK
P.O. BOX 410
SCHOFIELD, WISCONSIN 54476-0410

PROJECT: MCDONALDS TRELLIS
PROJECT LOCATION: PUYALLUP, WA, SSC 461180
REP COMPANY: GREENHECK NATIONAL ACCOUNT
CUSTOMER: MCDONALDS
ARCHITECT: ---

SCALED WHEN PLOTTED ON
1" SIZE 1" SIZE
SHEET DESCRIPTION:
DETAIL
SUBMISSION DRAWN BY:
A. PEDERSON
PRODUCTION DRAWN BY:
SALES ORDER NUMBERS:
LOUVER SDR NO.:
L2401075
DRAWING NO.:
D5



PROPRIETARY INFORMATION NOTICE:

This document is and contains confidential trade secret information of Greenheck Fan and is to be returned upon request. Neither it nor the information it contains may be reproduced or disclosed to persons not having a need-to-know consistent with the purpose of loan of the document without written permission.

GREENHECK
P.O. BOX 410
SCHOFIELD, WISCONSIN
54476-0410

PROJECT: MCDONALDS TRELLIS
PROJECT LOCATION: PUYALLUP, WA, SSC 461180
PREP COMPANY: GREENHECK NATIONAL ACCOUNT
CUSTOMER: MCDONALDS
ARCHITECT: ---

SCALED WHEN PLOTTED ON	
"D" SIZE	"B" SIZE
1/4	####
SHEET DESCRIPTION:	
DETAIL	
SUBMISSION DRAWN BY:	
A. PEDERSON	
PRODUCTION DRAWN BY:	

SALES ORDER NUMBERS:	

LOUVER SDR NO.:	
L2401075	
DRAWING NO.:	
D6	

COPYRIGHT 2006, GREENHECK FAN CORPORATION