

# Plumbing Permit Set - Equipment Replacement Puyallup School District Central Kitchen Facility

## GENERAL NOTE:

- COORDINATE ALL WORK WITH PUGET POWER & U.S. WEST. TELEPHONE & POWER DOWN-TIME SHALL BE SCHEDULED & APPROVED BY OWNER. INCLUDE PREMIUM TIME IN BID FOR THIS WORK.
- INCLUDE IN BID PRICE AN ALLOWANCE OF \$10,000.00 FOR PUGET POWER FEE. CREDIT TO OWNER ANY UNUSED AMOUNT.

## PLAN NOTES:

- CONNECT TO 20A, 4P LIGHTING CONTACTOR WITH PHOTOCELL/TIME CLOCK CONTROL.
- PROVIDE EXCAVATION & BACKFILL FOR UNDERGROUND VAULT & CONDUIT PROVIDED BY PUGET POWER.
- LIFT STATION CONTROL PANEL FURNISHED BY OTHERS. INSTALL PANEL. CONNECT PUMPS, LEVEL SENSORS & ALARM CONTACTS. REFER TO DETAIL, DRAWING C3.1, FOR ADDITIONAL INFORMATION.
- FINAL CONNECTION BY M.C..
- EXISTING U.S. WEST TELEPHONE PEDESTAL & UNDERGROUND CABLE. REMOVE & REPLACE WITH FLUSH TO GRADE VAULT (UTILITY VAULT #264 TA). COORDINATE WITH U.S. WEST CABLE WORK.
- 3" C.O.. INSTALL LENGTH INDICATING PULL LINE.

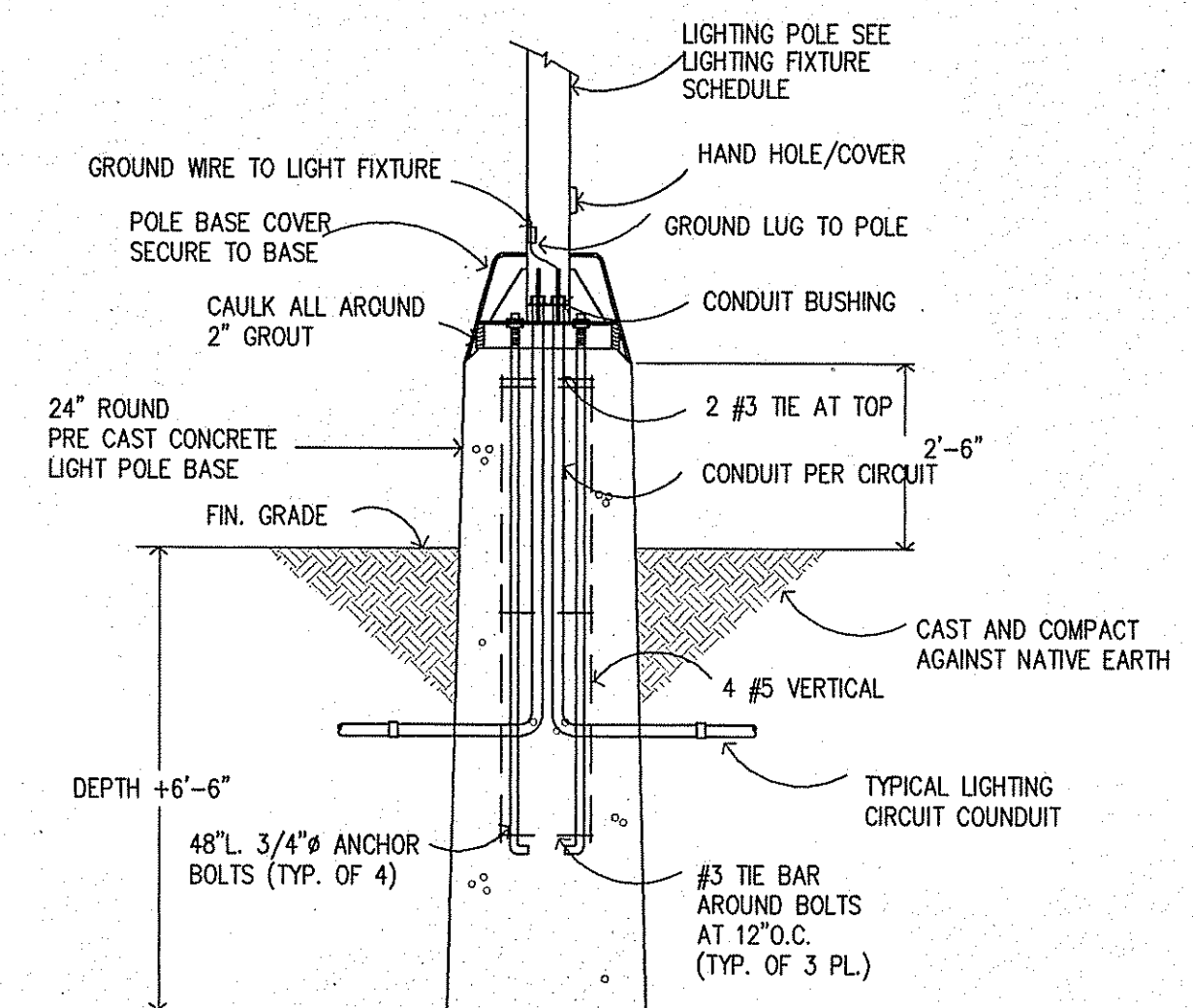
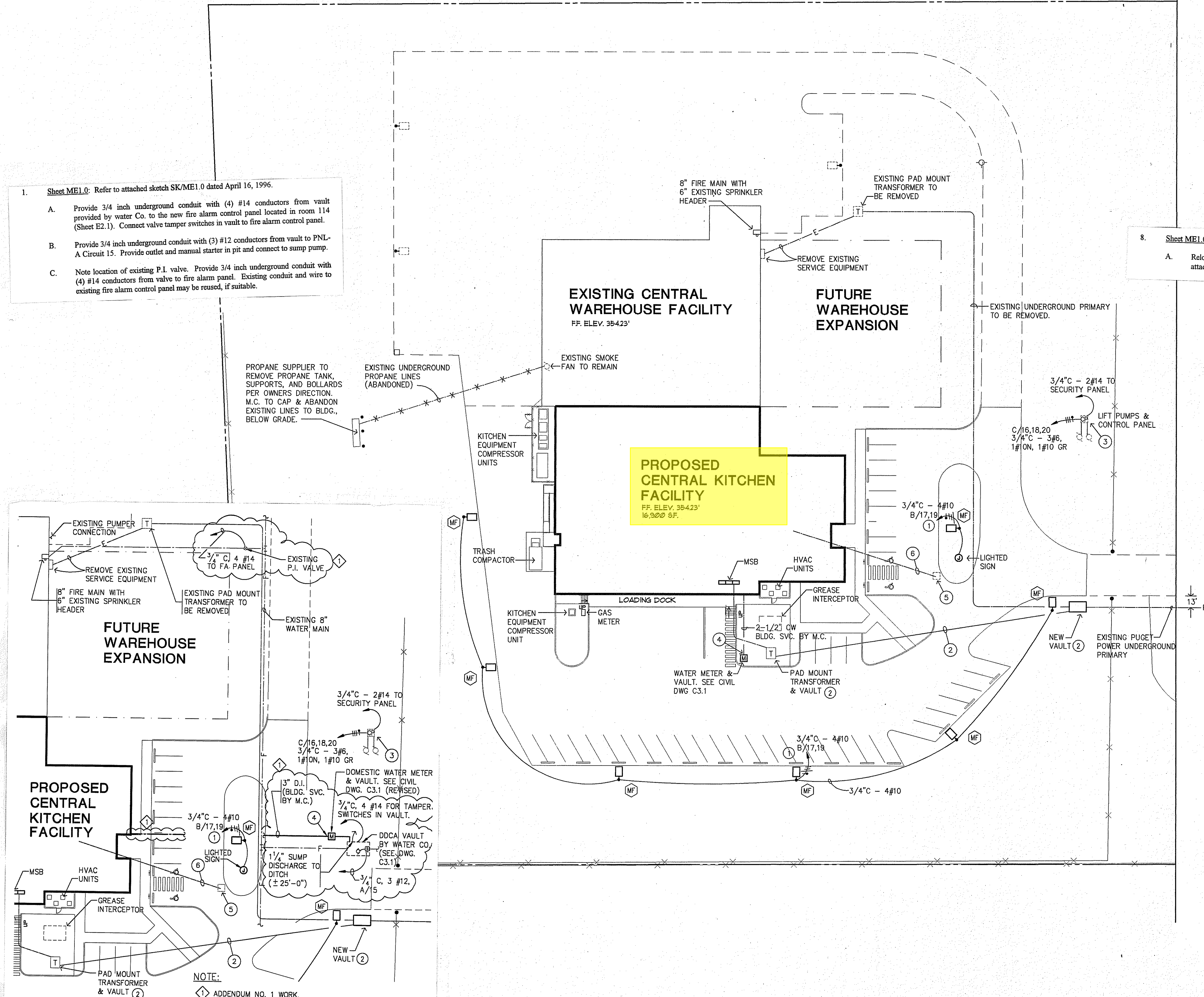
1. Sheet ME1.0: Refer to attached sketch SK/ME1.0 dated April 16, 1996.

- Provide 3/4 inch underground conduit with (4) #14 conductors from vault provided by water Co. to the new fire alarm control panel located in room 114 (Sheet E2.1). Connect valve tamper switches in vault to fire alarm control panel.
- Provide 3/4 inch underground conduit with (3) #12 conductors from vault to PNL-A Circuit 15. Provide outlet and manual starter in pit and connect to sump pump.
- Note location of existing P.I. valve. Provide 3/4 inch underground conduit with (4) #14 conductors from valve to fire alarm panel. Existing conduit and wire to existing fire alarm control panel may be reused, if suitable.

8. Sheet ME1.0

- Relocate water meter and CW building service to new location per partial Site Plan attached sketch SK/ME1.0.

Lower Left  
Corner This Page



## CONCRETE LIGHT POLE BASE

SCALE: 1\"/>

## SITE PLAN

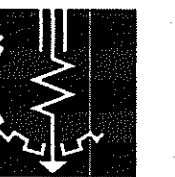
SCALE: 1\"/>

## GRAPHIC SCALE

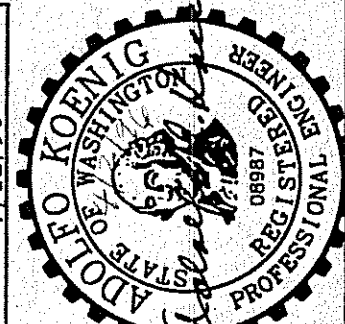


PRPL20250734

TREX WEST  
ENGINEERS, INC.  
2002 EAST 10TH AVE. SUITE 201  
TACOMA, WA 98409-7015  
TEL (206) 472-3463  
FAX (206) 472-3463



DESIGNED: EH  
DRAWN: DPH  
CHECKED: EH  
DATE: 4/2/96  
SCALE: 1\"/>

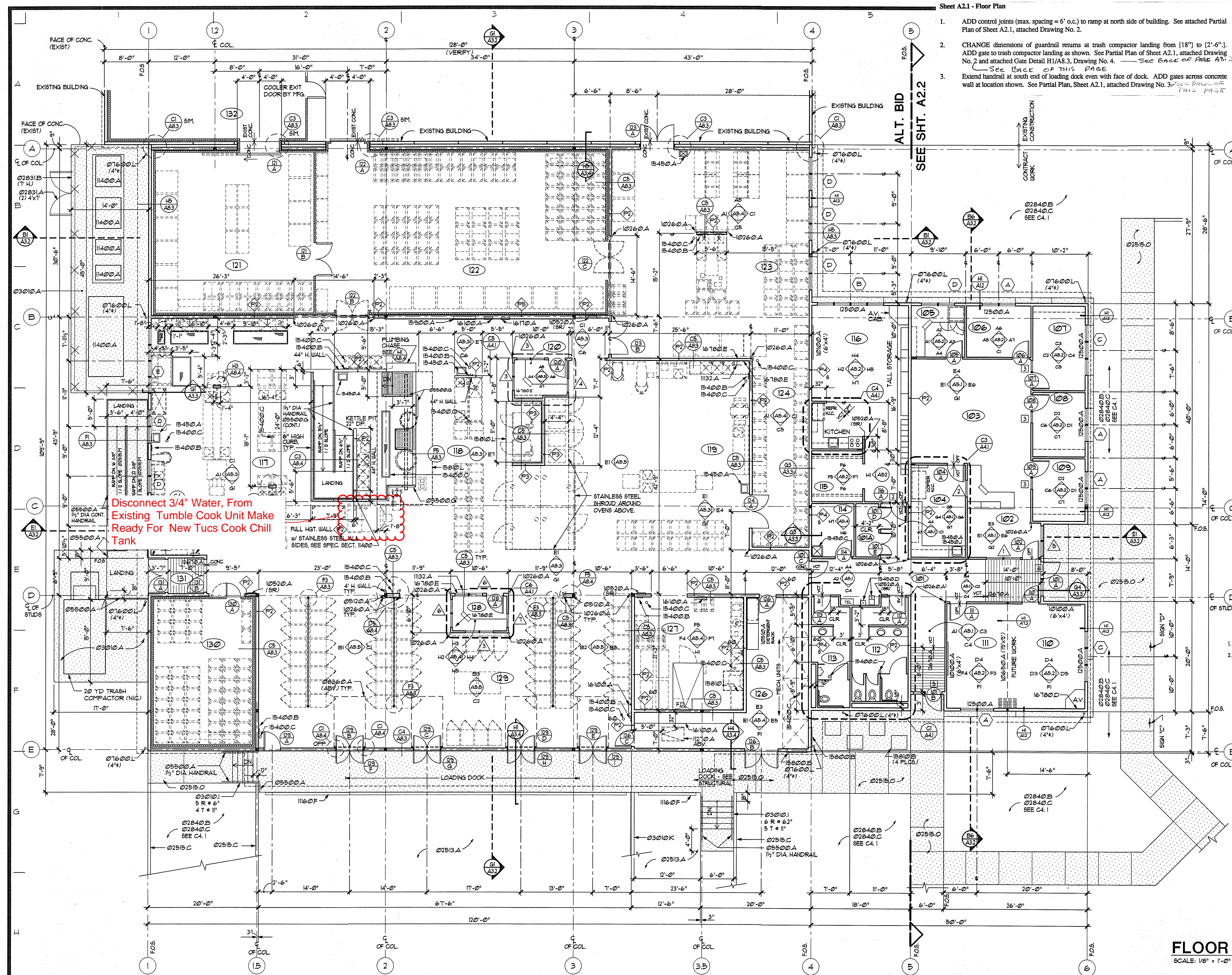


**SITTS & HILL  
ENGINEERS, INC.**  
CIVIL - STRUCTURAL - SURVEYING  
2901 S. 40th ST. TACOMA, WA 98409  
(206) 474-9449

**PUYALLUP  
SCHOOL DISTRICT NO. 3**  
109 EAST PIONEER  
PUYALLUP, WASHINGTON 98372  
(206) 841-1301

**CENTRAL KITCHEN FACILITY**  
3607 17th St SW Puyallup, Washington  
SHEET TITLE: MECHANICAL/ELECTRICAL  
SHEET NO.: ME1.0  
PROJECT NO.: 7351





## ROOM LEGEND

101	ENTRY/CORRIDOR
102	PHONE AND DATA ROOM
103	WAITING
104	RECEPTION
105	WORKROOM
106	ACCOUNTING STAFF
107	STORAGE AND FILES
108	SUPERVISOR
109	KITCHEN COORDINATOR
110	KITCHEN COORDINATOR
111	CONFERENCE
112	CONFERENCE
113	WOMEN'S TOILET ROOM
114	MEN'S TOILET ROOM
115	CUSTODIAL
116	COATS
117	STAFF BREAK ROOM
118	COLD PREP/CATERING
119	COOKING
120	BAKERY
121	KITCHEN MANAGER
122	FREEZER
123	STORAGE COOLER
124	INGREDIENT ROOM
125	FINISHED BAKERY PRODUCT STORAGE
126	NOT USED
127	MECHANICAL
128	SCULLERY
129	DISPATCH MANAGER
130	CART LOADING
131	FINISHED PRODUCT COOLER
132	VESTIBULE
133	WAREHOUSE FREEZER

## MATERIALS KEY

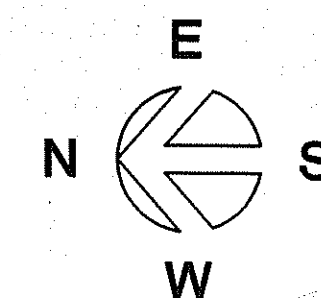
02513.A	ASPHALT CONCRETE - SEE CIVIL (THICKNESS)
02515.C	EXTRUDED CONCRETE CURB
02515.M	WHEELCHAIR RAMP PER WDOT STANDARDS
02515.O	CONCRETE WALK
02831.A	CHAINLINK FENCE (HEIGHT)
02831.B	CHAINLINK GATE (WIDTH)
02840.B	LAWN - SEE LANDSCAPE
02840.C	PLANTING - SEE LANDSCAPE
03010.A	CONCRETE SLAB - SEE STRUCTURAL
03010.I	CAST-IN-PLACE CONCRETE STAIRS
03010.K	CONCRETE RETAINING WALL - SEE STRUCTURAL
03010.O	STEEL TUBE COLUMN - SEE STRUCTURAL
03500.A	GALVANIZED STEEL PIPE RAIL (FINISH)
03500.G	BLACK STEEL PIPE RAIL (FIN)
03600.A	CAST-IN-PLACE CONCRETE STAIRS
03600.L	ABS DOWNSPOUT (DIA/FIN)
03600.O	SECTIONAL OVERHEAD DOOR - MANUAL (SIZE)
10100.A	WHITEBOARD (DIM)
10160.A	CORNER GUARD
10510.A	ADJUSTABLE STEEL SHELVING
10520.A	FIRE EXTINGUISHER AND CABINET (MOUNTING)
10650.A	OPERABLE PARTITION
1132.A	TELEVISION MOUNTING BRACKETS
1160.F	DOCK BUMPER
11710.A	DISAPPEARING STAIRS
12500.A	HORIZONTAL BLINDS
12610.A	ADHERED ENTRANCE MAT
15400.B	HOSE BIBB - SEE MECHANICAL
15400.C	FLOOR DRAIN - SEE MECHANICAL
15450.A	SINK - SEE MECHANICAL
15450.D	SERVICE SINK - SEE MECHANICAL
15450.J	DRINKING FOUNTAIN - SEE MECHANICAL
15450.K	HOT WATER DISPENSER - SEE MECHANICAL
15800.B	WEATHERPROOF LOUVER - SEE SCHEDULE
15810.B	HEAT EXCHANGER - SEE MECHANICAL
15810.D	OUTDOOR CONDENSING UNIT - SEE MECH
15810.L	KITCHEN HOOD - SEE MECHANICAL
15900.A	CONTROL PANEL - SEE MECHANICAL
16100.A	ELECTRICAL PANEL - SEE ELECTRICAL
16180.D	TV/AUDIO/VIDEO OUTLET - SEE ELEC.
16180.E	AV OUTLET - SEE ELECTRICAL

## NOTES

- SEE A42, A43, A44, A45 FOR DETAIL PLAN OF KITCHEN EQUIP.
- ALL INTERIOR PARTITIONS ARE (P) UNLESS NOTED OTHERWISE.
- ALL EXTERIOR WALLS ARE (E) UNLESS NOTED OTHERWISE.
- SEE WALL TYPE LEGEND ON SHEET A22

## FLOOR PLAN

SCALE: 1/8" = 1'-0"



PRPL20250734

**BLR+B**  
BLR+B ARCHITECTS, P.S.  
Bur Lawrence Rilling & Bates Architects P.S.  
Architects, Planning and Interiors  
1145 Broadway Place, Suite 1200, Tacoma, WA 98402-3519 • (360) 627-5559

DESIGNED J.K.  
DRAWN D.F.  
CHECKED  
DATE 4/2/96  
SCALE 1/8" = 1'-0"

REGISTERED ARCHITECT  
PAUL S. WISNICKI  
STATE OF WASHINGTON

**SITTS & HILL**  
**ENGINEERS, INC.**  
CIVIL - STRUCTURAL - SURVEYING  
2901 S. 40th ST. TACOMA, WA 98409 (206) 474-9449

PREPARED FOR  
**PUYALLUP**  
**SCHOOL DISTRICT NO. 3**  
109 EAST PIONEER  
PUYALLUP, WASHINGTON 98372  
(206) 841-1301

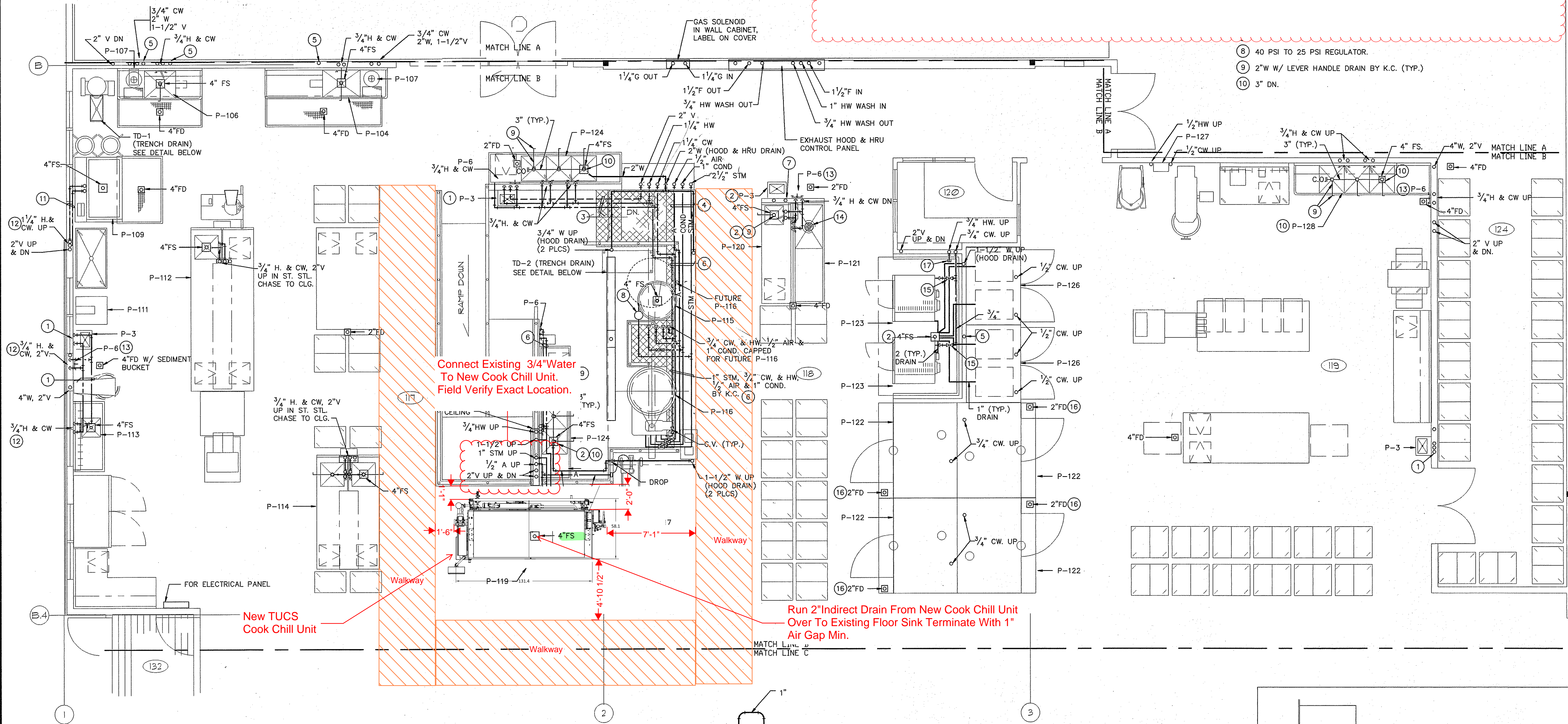
PROJECT  
**CENTRAL KITCHEN FACILITY**  
3607 17th St SW Puyallup, Washington  
SHEET TITLE  
**FLOOR PLAN**

SHEET NO.  
**A2.1**  
PROJECT NO.  
**7351**

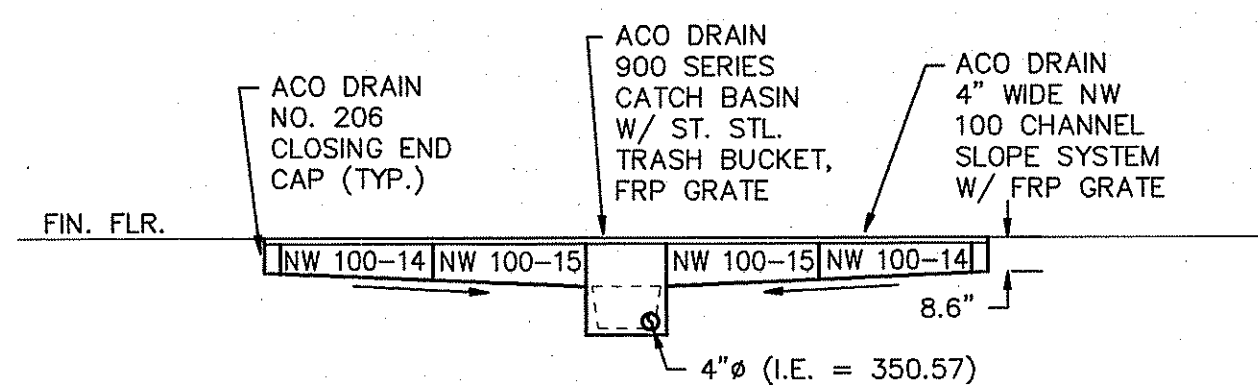


**Scope of Work:**

- Disconnect existing water, and drain from existing Chiller Tumbler
- Connect water and run drain line to floor sink for new cook chill tank unit

**KITCHEN PLUMBING PLAN B**

SCALE: 1/4" = 1'-0"

**TRENCH DRAIN (TD-1) DETAIL**

SCALE: 1/4" = 1'-0"

