



## MODEL TEBCCT-XXX

50, 100, 150, 200, OR 300

COMBINATION BATCH COOK-CHILL TANK

### GENERAL DESCRIPTION

The TUCS BATCH COOK-CHILL TANK is a multipurpose machine to quickly chill packaged hot liquids and/or automatically cook and chill vacuum packaged non pumpable products. The machine is equipped with an integral chilled water generator coupled to a remote refrigeration compressor thereby eliminating bulky problematic ice builders, falling film chillers or chilled glycol systems. The design incorporates a tank "floor" which rises to bring chilled pouches and casings out of the chill water for easy removal. The floor can also be lowered and raised incrementally for the easy loading and unloading of products for cook tank processing thereby eliminating the necessity for expensive, space consuming hoist monorail systems or jib style cranes.



Tucs Model TEBCCT

### CERTIFICATIONS

ANSI/UL-197, ANSI/UL-471



**TUCS Equipment, Inc.**

755 County Road 18 S. • Princeton MN 55371

Phone 763-574-7475 Fax 763-574-7472

www.tucsequipment.com

ITEM NO.

PRPL20250734

PROJECT

QUANTITY

AIA NO.

### CAPACITIES

Available in 50, 100, 150, 200- and 300-gallons nominal batch chill capacities up to 500, 1000, 1500, 2000 and 3,000 lbs. nominal cook tank capacities respectively

### CONSTRUCTION & FEATURES

304L stainless steel tank mounted on adjustable legs with leg pads ■ Hinged, powered, lockable cover ■ Insulated tank wall and floor with urethane foam to prevent sweating and condensation ■ Heating via steam coil rated at up to 150 psi steam. Operates dependably at pressure down to 15 psi ■ Push button raising and lowering of open grid floor for easy removal of cooled product and for easy loading of product to be cooked ■ High volume air pump agitation of tank water for effective and gentle tumble chilling ■ Removable racks with 17 angle guides and 7 wire shelves (standard) for holding product when in cook mode ■ Does not require ventilation hood in most locations (check local code)

### AIR AGITATION

¾ to 1 HP high volume, low pressure air pump ■ Dual, interconnected stainless steel air bubbler lines running full length of tank ■ Mounted and prewired to control

### COOLING EVAPORATORS

Stainless steel evaporator coils designed for Freon or ammonia refrigerant ■ Evaporator coils easy to view and clean

### CONTROLS

Programmable Logic Controller (PLC) contained within NEMA 4X control box ■ Touch screen operator interface with menu driven operation ■ Batch chill mode ■ Display of process water temperature ■ Display of process time ■ Cook-Chill mode ■ Mode selection: cook to time, cook to probe temperature ■ Digital input and display of process water temperature, product temperature (probe) cook time ■ Includes 100 probe seals ■ Electronic temperature recording

### OPTIONS

- ☒ Electronic Data Logger
- ☒ Chilled water take off heat exchanger with pump to provide chilled water for other purposes such as kettle jacket cooling
- ☐ Tank divider for separating tumble chill batches
- ☐ Dial up alarm system
- ☒ Air or water-cooled remote compressor/condensers for evaporator coils (includes DX coils and solenoid)

Printed in the USA | Revised 12-29-22

# TUCS COOK-CHILL, SOUS VIDE & PACKAGING SOLUTIONS

## MODEL TEBCCT-XXX

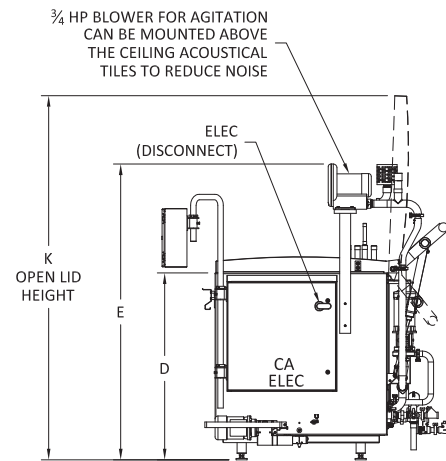
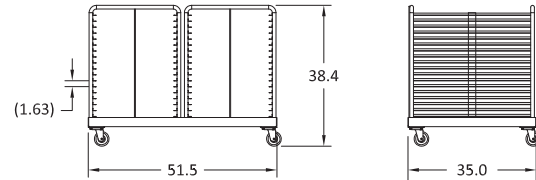
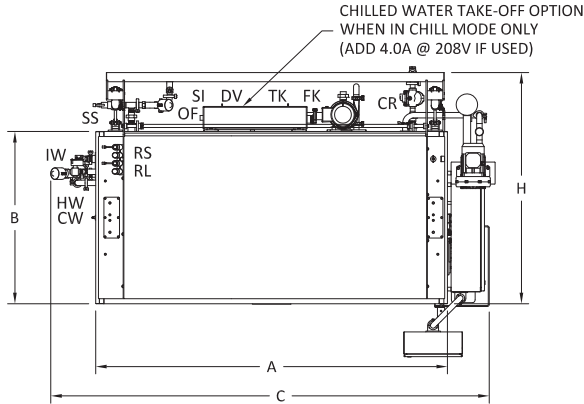
50, 100, 150, 200, OR 300

COMBINATION BATCH COOK-CHILL TANK

Scan this QR code with your smart phone to visit our website for more information.



PRPL20250734



### NOTES:

1. SHOWN WITH CONTROL ON RIGHT SIDE. LEFT SIDE AVAILABLE.
2. DIMENSIONS SUBJECT TO CHANGE WITHOUT NOTICE FROM FACTORY.
3. ALLOW 36" MINIMUM CLEARANCE IN FRONT OF CONTROL PANEL.
4. REFRIGERATION CONNECTION SIZES SHOWN ARE TYPICAL FROM FACTORY. ALTERNATE CONNECTION SIZES ARE AVAILABLE UPON REQUEST.
5. 3" FLEXIBLE HOSE CONNECTIONS INCLUDED FOR CA, SS, CR, AND PW. INSTALLER MUST PROVIDE STAINLESS ELBOWS OR STREET ELBOWS WHEN MAKING FINAL CONNECTIONS.
6. TYPICAL REFRIGERATION COIL QUANTITIES SHOWN MAY CHANGE TO ACCOMMODATE REFRIGERANT SUPPLY.
7. CUSTOMER TO PROVIDE REGULATED WATER PRESSURE NOT TO EXCEED 100 PSI.

### DIMENSIONS

SIZE	A	B	C	D	E	F	G	H	J	K
50	48	47	72	51	81	7	44	64	65	100
100	71	47	96	51	81	7	44	64	65	100
150	96	47	120	51	81	7	44	64	65	100
200	120	47	144	51	81	7	44	64	65	100
300	174	47	198	51	81	7	44	64	65	100

### COMMON UTILITY CONNECTIONS

SIZE	COMPR. AIR 10 CFM @ 90 PSI	STEAM	COND. RETURN	COLD POTABLE WATER @ 100 PSI MAX	HOT POTABLE WATER @ 100 PSI MAX (OPTIONAL)	INDIRECT WASTE	OVERFLOW	ELECTRIC (OPTIONS)			OPTIONAL CHILLED WATER TAKE-OFF				
								@ 208V	@ 240V	@ 480V	SUPPLY IN	FROM KETTLES	TO KETTLES	OVERFLOW	DRAIN VALVE
CAPACITY	CA	SS	CR	CW	HW	IW	OV	ELEC	ELEC	ELEC	SI	FK	TK	OF	DV
50-300	3/4" QD	1" NPT	1" NPT	3/4" NPT	3/4" NPT	2" NPT	1 1/2" NPT	9.1A	8.0A	4.0A	3/4" NPT	1 1/2" NPT	1 1/2" NPT	3/4" NPT	1/2" NPT

### UTILITY REQUIREMENTS

SIZE		STEAM SUPPLY (150 psi MAX)	REFRIGERATION				WEIGHT (LBS)	
PRODUCT CAPACITY (GALLONS)	SOLID MUSCLE POUNDS	LBS/HR MAX @ 45 PSI	TOTAL BTU/hr @ 25°F SUCTION	COIL QUANTITY PER UNIT	LIQUID	SUCTION	EMPTY	FULL
50	400-500	350	70,000	1	7/8"	1 3/8"	1,030	3,630
100	800-1,000	600	120,000	1	7/8"	1 3/8"	1,480	5,590
150	1,200-1,500	850	145,000	1	7/8"	1 3/8"	2,580	7,980
150	1,200-1,500	850	145,000	2	7/8"	1 3/8"	2,580	7,980
200	1,600-2,000	1,200	230,000	2	7/8"	1 3/8"	2,880	9,630
300	2,400-3,000	1,800	336,000	2	7/8"	1 3/8"	4,180	14,030
300	2,400-3,000	1,800	336,000	3	7/8"	1 3/8"	4,180	14,030

### RECOMMENDED CLEARANCES

RIGHT HAND TANK	
RIGHT (PANEL) SIDE	36"
BACK SIDE	36"
LEFT SIDE	18"

12/29/2022

Due to continuous improvements, specifications subject to change without notice.

© 2022 TUCS Equipment. All Rights Reserved. Printed in the USA.

LEGEND		
ITEM #	MODEL #	DESCRIPTION
1	TEBCCT-200-CWUV	200 GAL BATCH COOK/CHILL TANK, CWTO, ULTRAVIOLET

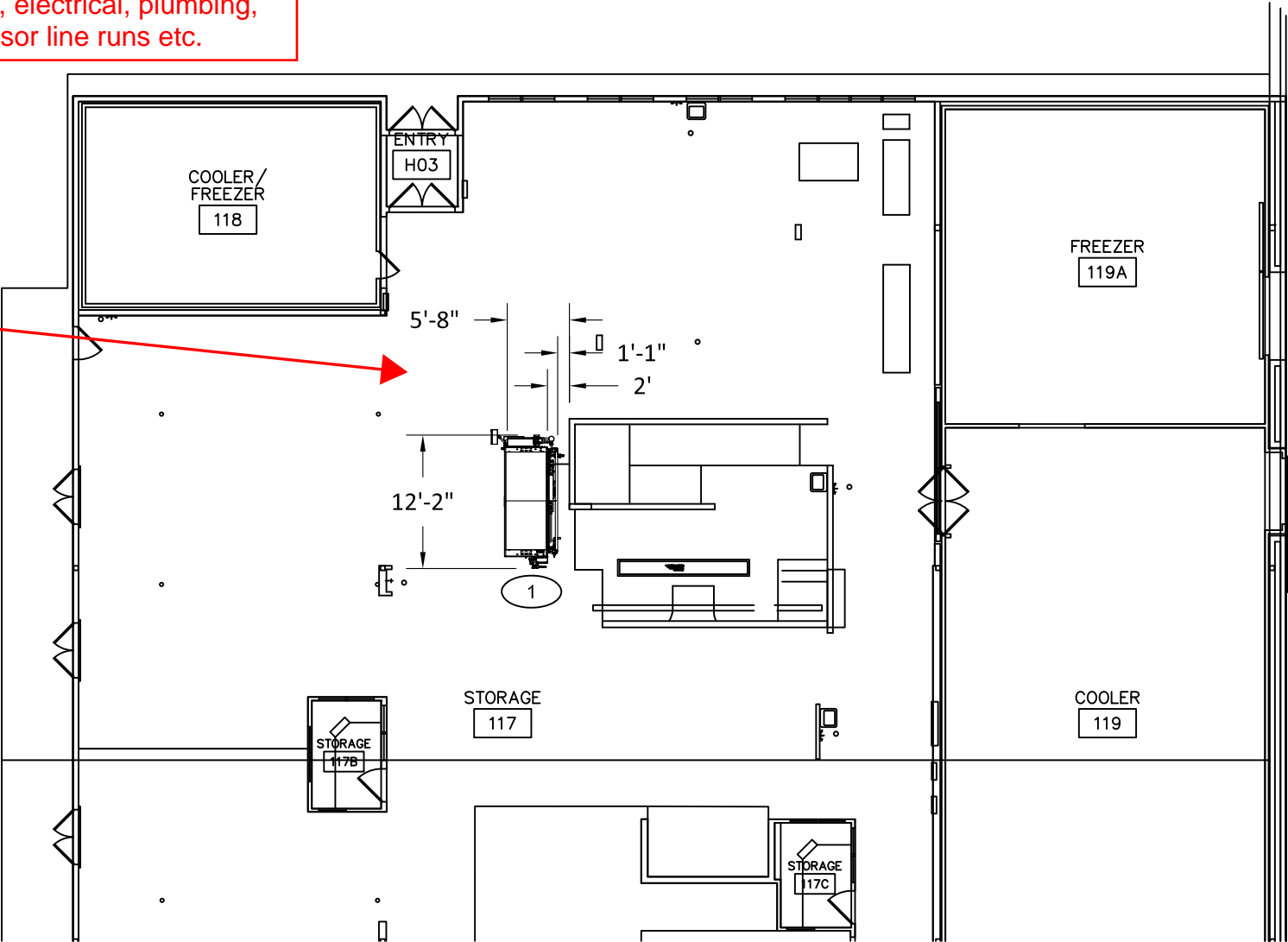
REVISIONS				
ZONE	REV	DESCRIPTION	DATE	REVISED BY
	A	RELEASED FOR APPROVAL	3/14/2025	T. AFFELDT

Note:

PRPL20250734

Provide Equipment Floor plan drawing reflecting Refrigeration Rack, Cook/Chill Tank and Air Compressor locations as it relates to building and other surrounding equipment. Also provide Utility Rough-in drawings reflecting utility requirements and locations. Drawings to reflect scope of work responsibilities for each trade including building steam, electrical, plumbing, refrigeration line, chilled water piping and Air Compressor line runs etc.

Provide dimension locating Cook/Chill Tank plan north/south



**CLEVENGER ASSOCIATES**

☐ Approved ☒ Approved with Notations  
☐ Rejected ☐ Revise and Re-submit

Checking is only for general conformance with the design concept of the project and general compliance with the information given in the contract documents. Any action shown is subject to the plans and specifications. Contractor is responsible for dimensions which shall be confirmed and correlated at the job site; fabrication processes and techniques of construction; coordination of his work with that of all other trades; and the satisfactory performance of his work.

By Date 04-15-25

# TUCS DRAWING APPROVAL

APPROVED BY: \_\_\_\_\_ DATE: \_\_\_\_\_

TUCS EQUIPMENT INC. MUST RECEIVE FINAL APPROVAL OF THIS DRAWING PRIOR TO FABRICATION. APPROVAL OF THIS DRAWING CERTIFIES THAT THE SPECIFIED EQUIPMENT HAS BEEN REVIEWED AND ALL OF THE INFORMATION CONTAINED WITHIN HAS BEEN APPROVED AND ACCEPTED BY PURCHASER

TITLE: PUYALLUP - QUOTE 24092 REV 8

FLOOR PLAN

DATE: 3/14/2025

DRAWN BY: T. AFFELDT

UNLESS OTHERWISE SPECIFIED:

DIMENSIONS ARE IN INCHES AND ARE USED FOR REFERENCE ONLY.

ON-SITE VERIFICATION MAY BE REQUIRED.

DO NOT SCALE.

MODEL NUMBER

FLOOR PLAN



REV

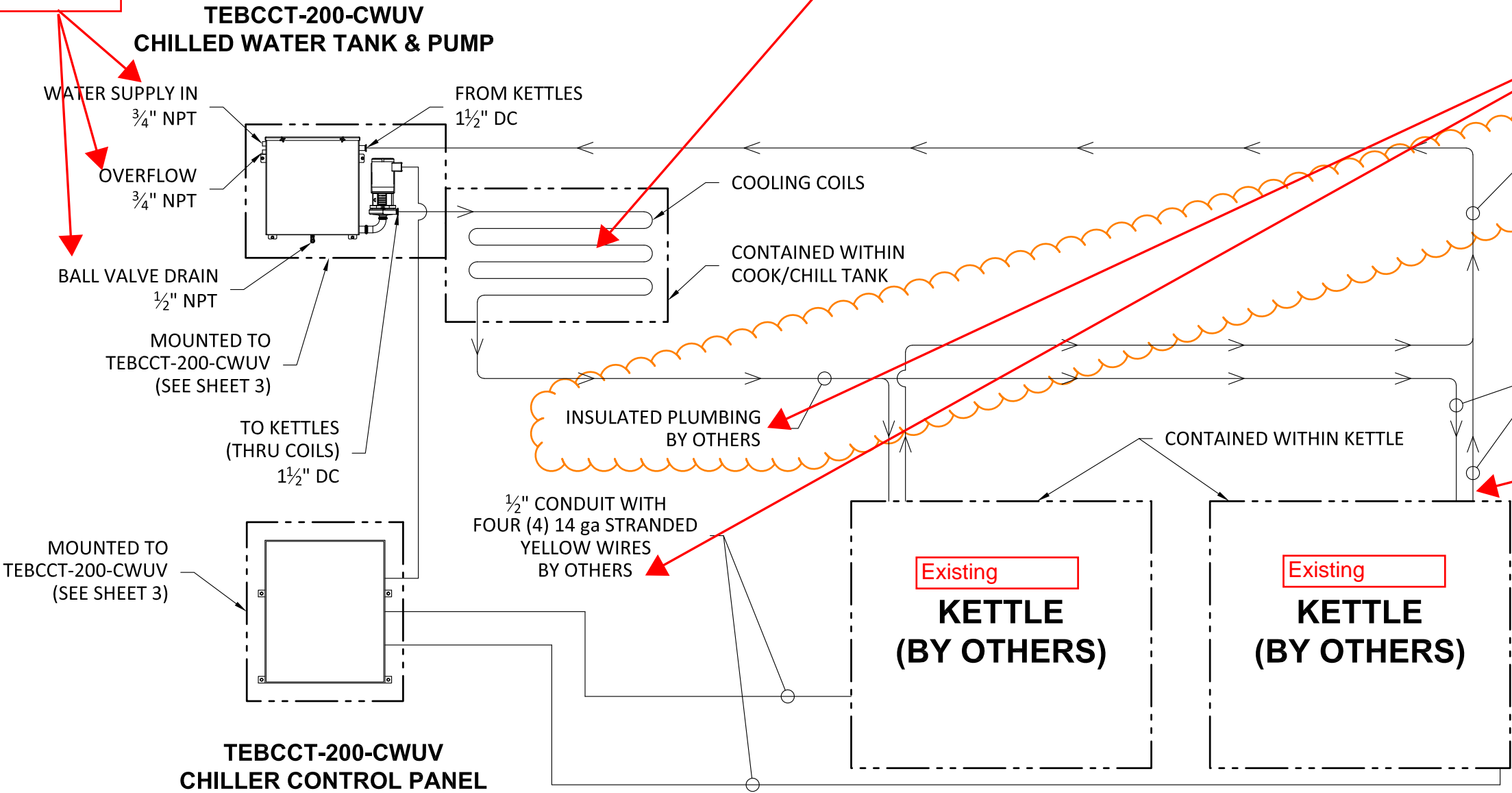
A

SHEET:  
1 OF 3

LEGEND								
** ELECTRICAL				WATER				
TOTAL AMPS	VOLTS	PHASE	PLUG IN	WATER SUPPLY IN	OVERFLOW	BALL VALVE DRAIN (NPT)	TO KETTLES	FROM KETTLES
(3.3)	208	3	NO	¾" NPT	* ¾" NPT	* ½" NPT	1 ½" DC	1 ½" DC

\* DIRECT CONNECTION TO DRAIN NOT REQUIRED, PLACEMENT NEAR FLOOR SINK SUGGESTED.  
\*\* ELECTRICAL SUPPLY AND CONTROLS PROVIDED THROUGH COOK/CHILLER CONTROL PANEL.

Confirm and reflect locations for existing floor sink and cold water connection



Cook Chill Tank to supply chilled water to existing kettles. Note that the Chilled Water function for the Cook/Chill Tank and Kettles can NOT be used at the same time due to capacities. Puyallup SD to confirm this is acceptable.

Reflect trade responsible

INSULATED PLUMBING BY OTHERS

Please remove all references to work by others for items within this permit.

Ø1" X 36" LONG FLEXIBLE CONNECTORS BY TUCS (TYPICAL)

Confirm connection types and locations at existing kettles

½" CONDUIT WITH FOUR (4) 14 ga STRANDED YELLOW WIRES BY OTHERS

Separate Electrical Permit is required with the Washington State Department of Labor & Industries.  
<https://lni.wa.gov/licensing-permits/electrical/electrical-permits-fees-and-inspections>  
or call for Licensing Information: 1-800-647-0982

**CLEVENGER ASSOCIATES**

☐ Approved ☒ Approved with Notations

☐ Rejected ☐ Revise and Re-submit

Checking is only for general conformance with the design concept of the project and general compliance with the information given in the contract documents. Any action shown is subject to the plans and specifications. Contractor is responsible for dimensions which shall be confirmed and correlated at the job site; fabrication processes and techniques of construction; coordination of his work with that of all other trades; and the satisfactory performance of his work.

By  Date 04-15-25

## TUCS DRAWING APPROVAL

APPROVED BY: \_\_\_\_\_ DATE: \_\_\_\_\_

TUCS EQUIPMENT INC. MUST RECEIVE FINAL APPROVAL OF THIS DRAWING PRIOR TO FABRICATION. APPROVAL OF THIS DRAWING CERTIFIES THAT THE SPECIFIED EQUIPMENT HAS BEEN REVIEWED AND ALL OF THE INFORMATION CONTAINED WITHIN HAS BEEN APPROVED AND ACCEPTED BY PURCHASER

TITLE: PUYALLUP - QUOTE 24092 REV 8

CHILLED WATER TAKE OFF DIAGRAM

DATE: 3/14/2025

DRAWN BY: T. AFFELDT

MODEL NUMBER

REV

CHILLED WATER  
DIAGRAM

A



SHEET:  
2 OF 3



LEGEND															REVISIONS					
COMPRESSED AIR				ELECTRICAL				EWON	STEAM		WATER		REFRIGERATION			ZONE	REV	DESCRIPTION	DATE	REVISED BY
CFM	PSI	CONNECT SIZE	QUICK DISCONNECT	AMPS	VOLTS	PHASE	PLUG IN	CAT 5 OR WIRELESS	INPUT (NPT)	CONDENSATE RETURN (NPT)	POTABLE (NPT)	DRAIN (DC)	LIQUID	SUCTION	TOTAL BTUH		A	RELEASED FOR APPROVAL	3/14/2025	T. AFFELDT
10	90	¼"	YES	17.1	208	3	NO	CAT 5	1"	1"	¾"	* 2"	(4X) 7⁄8"	(4X) 1 3⁄8"	230,000		B	4X REFRIGERATION CONNECTIONS WAS 2X AND ADDED NOTE 4	4/7/2025	T. AFFELDT

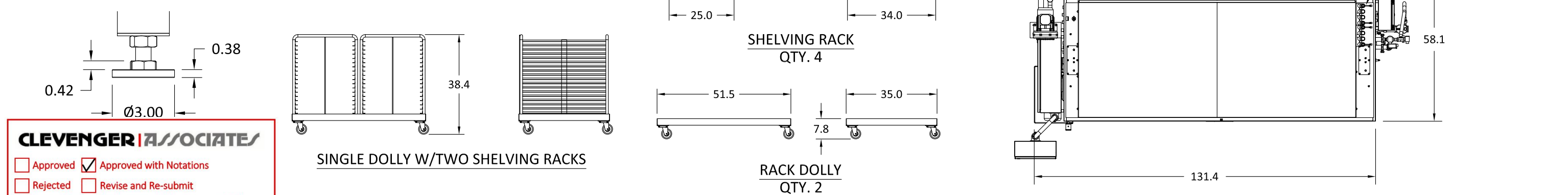
LEGEND NOTES:  
\* DIRECT CONNECTION TO DRAIN NOT REQUIRED, PLACEMENT NEAR FLOOR SINK SUGGESTED.

PRPL20250734

- NOTES:
- 3' FLEXIBLE CONNECTIONS SHALL BE PROVIDED FOR COMPRESSED AIR, STEAM IN, STEAM OUT, AND POTABLE WATER.
  - INCLUDES DIAL UP ALARM AND LOCKING COVER.
  - SEE SHEET 2 FOR CHILLED WATER TAKE OFF DETAILS.
  - 4X REFRIGERATION COILS BASED ON 4X CUSTOMER SUPPLIED 6HP (60,000 BTU) CONDENSING UNITS.

Reflect lbs per hour and pressure required.

Confirm existing building steam system will handle these requirements.

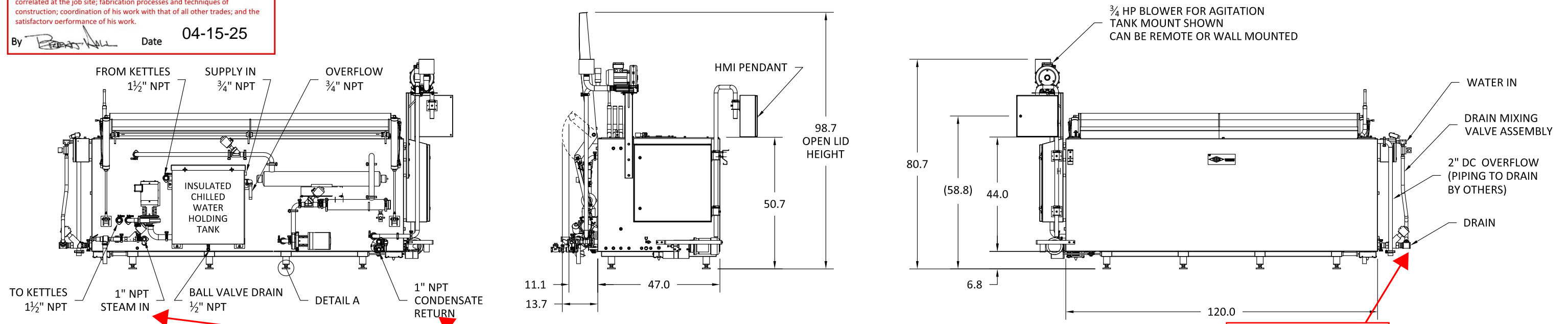


**CLEVENGER ASSOCIATES**

☐ Approved ☒ Approved with Notations  
☐ Rejected ☐ Revise and Re-submit

Checking is only for general conformance with the design concept of the project and general compliance with the information given in the contract documents. Any action shown is subject to the plans and specifications. Contractor is responsible for dimensions which shall be confirmed and correlated at the job site; fabrication processes and techniques of construction; coordination of his work with that of all other trades; and the satisfactory performance of his work.

By Date 04-15-25




Confirm with existing building steam system.

Reflect existing floor sink location on utility rough-in plans.

# TUCS DRAWING APPROVAL

APPROVED BY: \_\_\_\_\_ DATE: \_\_\_\_\_

TUCS EQUIPMENT INC. MUST RECEIVE FINAL APPROVAL OF THIS DRAWING PRIOR TO FABRICATION. APPROVAL OF THIS DRAWING CERTIFIES THAT THE SPECIFIED EQUIPMENT HAS BEEN REVIEWED AND ALL OF THE INFORMATION CONTAINED WITHIN HAS BEEN APPROVED AND ACCEPTED BY PURCHASER

TITLE: PUYALLUP - QUOTE 24092 REV 8  BATCH COOK CHILL TANK, 200 GALLON		UNLESS OTHERWISE SPECIFIED:	MODEL NUMBER	REV
		DIMENSIONS ARE IN INCHES AND ARE USED FOR REFERENCE ONLY.  ON-SITE VERIFICATION MAY BE REQUIRED.  DO NOT SCALE.	TEBCCT-200-CWUV	B
DATE: 3/14/2025	DRAWN BY: T. AFFELDT			SHEET: 3 OF 3