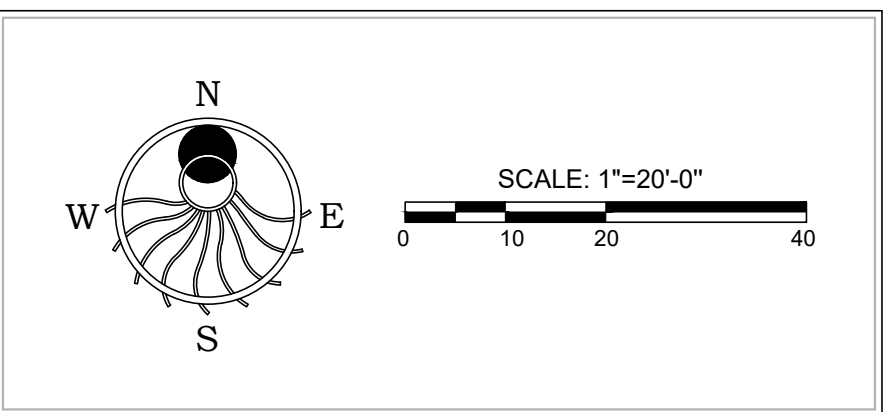


## LANDSCAPE PLAN

Date: 6-6-2024  
 # bradbury-1-2023  
 Design: EJW  
 Drawn: EJW  
 Check: \_\_\_\_\_  
 Revisions: \_\_\_\_\_

L1.0



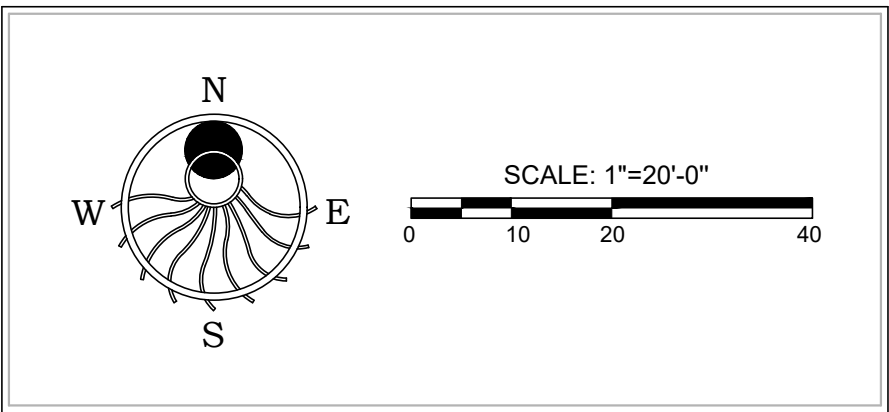


| PLANT LEGEND        |                                  |                                  |   |
|---------------------|----------------------------------|----------------------------------|---|
| QTY                 | BOTANICAL NAME                   | COMMON NAME                      | SIZE & SPACING  |
| TREES               |                                  |                                  |   |
| 5                   | GINKGO BILOBA 'PRINCETON SENTRY" | PRINCETON SENTRY GINKGO          | 2" CALIPER, 30' O.C., 5' GRAFT                        |
| 4                   | CORNUS NUTTALLII                 | PACIFIC DOGWOOD                  | 2" CALIPER, 40' O.C., 5' GRAFT                        |
| 31                  | KOELREUTERIA PANICULATA          | GOLDENCHAIN TREE                 | 2" CALIPER, 30' O.C., 5' GRAFT                        |
| 132                 | CUPRESSUS ARIZONICA VAR. GLABRA  | BLUE ICE SMOOTH CYPRESS          | 6'-8' HEIGHT, 3' O.C. SPACING                         |
| 20                  | PSEUDOTSUGA MENZIESII            | DOUGLAS FIR                      | 6'-8' HEIGHT, 8' O.C SPACING                          |
| 48                  | THUJA PLICATA                    | WESTERN RED CEDAR                | 6'-8' HEIGHT, 8' O.C SPACING                          |
| SHRUBS              |                                  |                                  |   |
| 42                  | SYMPHORICARPUS ALBUS             | MOCKORANGE                       | 3 GALLON, 7.5' O.C. SPACING                           |
| 68                  | ESCALLONIA EXONIENSIS 'FRADESII' | PINK PRINCESS ESCALLONIA         | 3 GALLON, 4' O.C. SPACING                             |
| 91                  | RIBES SANGUINEUM                 | RED FLOWERING CURRANT            | 3 GALLON, 7.5' O.C. SPACING                           |
| 36                  | CORNUS SERICEA                   | RED TWIG DOGWOOD                 | 3 GALLON, 4' O.C. SPACING                             |
| 30                  | AZALEA 'HINO CRIMSON'            | HINO CRIMSON AZALEA              | 2 GALLON, 3' O.C. SPACING                             |
| 58                  | CORNUS SERICEA 'KELSEYI'         | KELSEY DOGWOOD                   | 2 GALLON, 3' O.C. SPACING                             |
| 58                  | CALAMAGROSTIS 'KARL FOERSTER'    | KARL FOERSTER FEATHER REED GRASS | 2 GALLON, 3' O.C. SPACING                             |
| GROUND COVER        |                                  |                                  |   |
| 258                 | ARCTOSTPYLLOS UVA-URSI           | KINNIKINNICK                     | 1 GALLON, 30" O.C. SPACING                            |
| 339                 | GAULTHERIA SHALLON               | SALAL                            | 1 GALLON, 30" O.C. SPACING                            |
| DAFFODIL BULBS      |                                  |                                  | BULBS @ 12" O.C. SPACING                              |
| HYDROSEED MIXES     |                                  |                                  |   |
| SPECIAL SUN MIXTURE |                                  |                                  | BY COUNTRY GREEN TURF FARMS<br>8 LBS PER 1000 SQ. FT. |
| PERENNIAL RYEGRASS  |                                  | 80%                              |   |
| FINE FESCUE         |                                  | 20%                              |   |

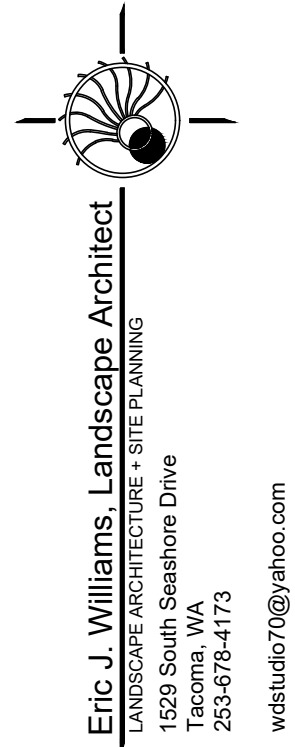
LANDSCAPE NOTES AND SOIL QUALITY

1. PROVIDE LANDSCAPE PLANTING TO SCREEN ALL OUTDOOR UTILITY EQUIPMENT. PLANT OPTIONS INCLUDE: BLUE ICE ARIZONA CYPRESS, PURPLE ROCK ROSE, PINK PRINCESS ESCALLONIA, OR PACIFIC WAX MYRTLE.
2. LANDSCAPE AREAS SHOULD BE DEEP-TILLED TO A DEPTH OF AT LEAST TWE1VE (12) INCHES TO FACILITATE DEEP WATER PENETRATION AND SOIL OXYGENATION. PROVIDE SOIL AMENDMENTS ENCOURAGED TO IMPROVE WATER DRAINAGE, MOISTURE PENETRATION OR WATER-HOLDING CAPACITY. FOR ALL NEWLY LANDSCAPED AREAS ORGANIC MATTER SHOULD BE INCORPORATED TO A DEPTH OF FOUR (4) TO SIX (6) INCHES TO FACILITATE DEEP WATER PENETRATION AND SOIL OXYGENATION.
3. CONTRACTOR SHALL PROVIDE 4" DEPTH IMPORTED TOPSOIL AT SEED MIX AREAS AND 9" DEPTH IMPORTED TOPSOIL AT ALL LANDSCAPE PLANTING AREAS.
4. COMPACT ALL SEED MIX AREAS IN TWO DIRECTIONS WITH ROLLER PRIOR TO HYDROSEEDING.
5. IMPORTED TOPSOIL SHALL BE 3-WAY MIX.
6. CONTRACTOR SHALL PROVIDE 2" DEPTH FINE COMPOST MULCH THROUGHOUT LANDSCAPE PLANTING AREAS.
7. CONTRACTOR SHALL GUARANTEE ALL PLANT MATERIALS FOR A PERIOD OF (1) ONE YEAR FROM TIME OF COMPLETION OF WORK.
8. TREES PLANTED FIVE FEET OR LESS FROM PAVED SURFACES SHALL BE PLANTED WITH ROOT CONTROL BARRIER.

PLANT IMAGES



BRADBURY PLACE  
TOWNHOMES  
XXX 5TH STREET SOUTHEAST  
PUYALLUP, WA



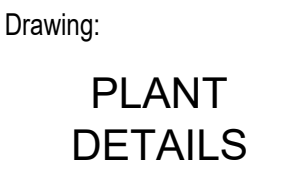
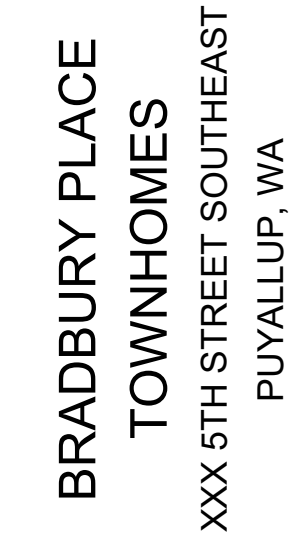
Drawing:  
LANDSCAPE  
PLAN

Date: 6-6-2024  
Job # bradbury-1-2023  
Design: EJW  
Drawn: EJW  
Check: \_\_\_\_\_  
Revisions: \_\_\_\_\_

Sheet:

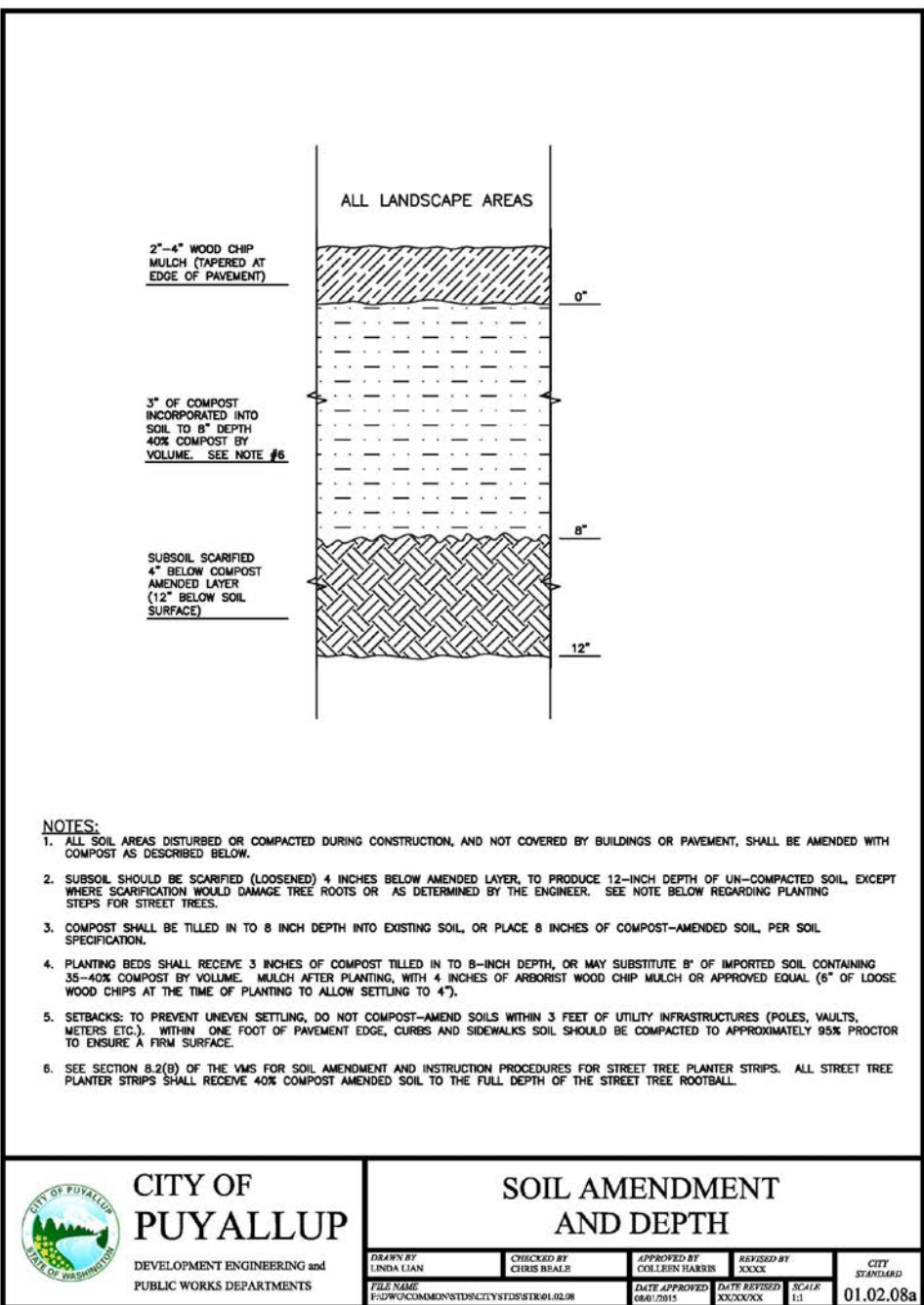
L1.1





Sheet:

---







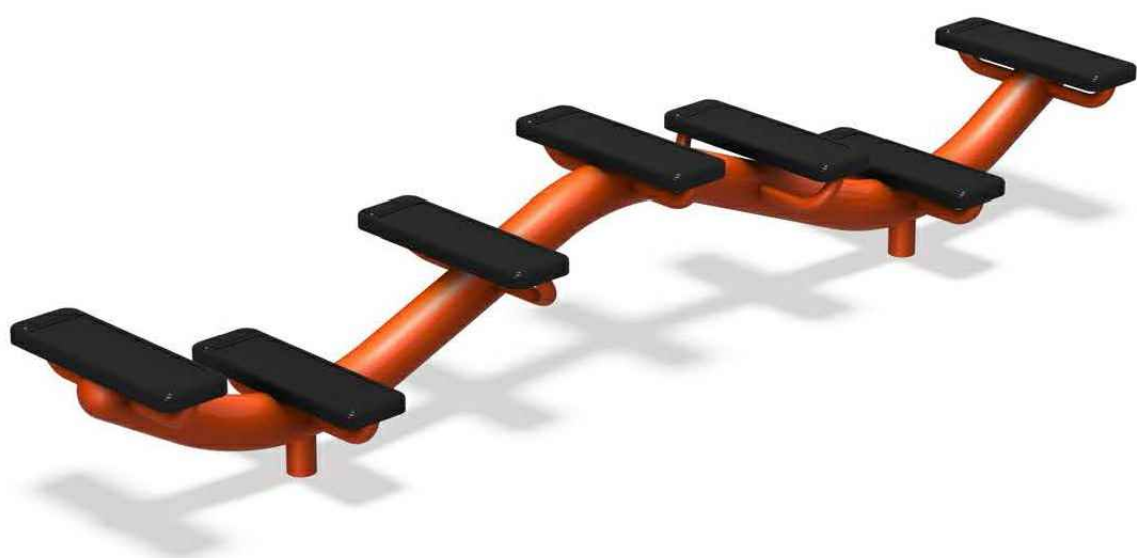
The PlayLab SeeSaw is a fun and innovative take on a playground favorite. Children stand on the rubber-coated platforms, grip the handles and shift their body weight to produce the classic "seesaw" motion. The fully-enclosed rubber spring mechanism creates a smooth gliding motion and prevents abrupt stops and starts endemic to old-fashioned seesaws.

- Features and Benefits:**
- Unique design allows children to stand during play
  - Rubber spring mechanism provides smooth "seesaw" motion without sudden drops or lifts
  - Coated platforms provide slip-resistant surface

Model: 6261  
Use Zone: 20' 1in X 13' 4in  
Age Group: 5 to 12 Years

Limited Lifetime Warranty on uprights, hardware and connections. Visit [gametime.com/warranty](https://gametime.com/warranty) for full warranty information

## 1 PLAY AREA #1 - SEE SAW



The undulating design of our Inchworm Climber makes it a fun freestanding play activity, or a functional link between two areas of a playground. Body is constructed of durable steel and painted with a powder-coated finish. Rubber steps feature slip-resistant treads.

- Features and Benefits:**
- Fun way to functionally link two sections of a playground
  - Enhances balance and coordination skills
  - Inchworm design promotes active play and adds an extra element of fun
  - Constructed of durable, recyclable materials and backed by the industry's leading warranty

Model: 8665  
Use Zone: 13' 4" X 19' 4"  
Fall Height: 4'  
Age Group: 5 to 12 Years

Limited Lifetime Warranty on uprights, hardware and connections. Visit [gametime.com/warranty](https://gametime.com/warranty) for full warranty information

## 2 PLAY AREA #2 - INCH WORM BALANCE BEAM



Merry-Go-All is a fully accessible, forward-facing inclusive merry-go-round for up to 8 passengers (4 seated, 4 standing). It's a fun motion activity for everyone to enjoy. It features grip/grasp areas to hold onto while riding or pushing others. The center wheel remains stationary so children can work together to turn Merry-Go-All while seated. Available in multi-color...

- Features and Benefits:**
- Inclusive design with seats at transfer height
  - Forward-facing design for up to 8 users (4 seated, 4 standing)
  - Promotes social interaction and collaborative play
  - Designed for use with an optional 5-point harness (not included)
  - Durable, frictionless magnetic braking system to minimize speed

Model: 6272  
Use Zone: 19' X 19'  
Fall Height: 4'  
Age Group: 2 to 5 Years  
Age Group: 5 to 12 Years  
Number of Children: 8

Limited Lifetime Warranty on uprights, hardware and connections. Visit [gametime.com/warranty](https://gametime.com/warranty) for full warranty information

## 3 PLAY AREA #3 - MERRY GO ALL