

# Mechanical Permit Set - Equipment Replacement Puyallup School District Central Kitchen Facility

## GENERAL NOTE:

- COORDINATE ALL WORK WITH PUGET POWER & U.S. WEST. TELEPHONE & POWER DOWN-TIME SHALL BE SCHEDULED & APPROVED BY OWNER. INCLUDE PREMIUM TIME IN BID FOR THIS WORK.
- INCLUDE IN BID PRICE AN ALLOWANCE OF \$10,000.00 FOR PUGET POWER FEE. CREDIT TO OWNER ANY UNUSED AMOUNT.

## PLAN NOTES:

- CONNECT TO 20A, 4P LIGHTING CONTACTOR WITH PHOTOCELL/TIME CLOCK CONTROL.
- PROVIDE EXCAVATION & BACKFILL FOR UNDERGROUND VAULT & CONDUIT PROVIDED BY PUGET POWER.
- LIFT STATION CONTROL PANEL FURNISHED BY OTHERS. INSTALL PANEL. CONNECT PUMPS, LEVEL SENSORS & ALARM CONTACTS. REFER TO DETAIL, DRAWING C3.1, FOR ADDITIONAL INFORMATION.
- FINAL CONNECTION BY M.C..
- EXISTING U.S. WEST TELEPHONE PEDESTAL & UNDERGROUND CABLE. REMOVE & REPLACE WITH FLUSH TO GRADE VAULT (UTILITY VAULT #264 TA). COORDINATE WITH U.S. WEST CABLE WORK.
- 3" C.O.. INSTALL LENGTH INDICATING PULL LINE.

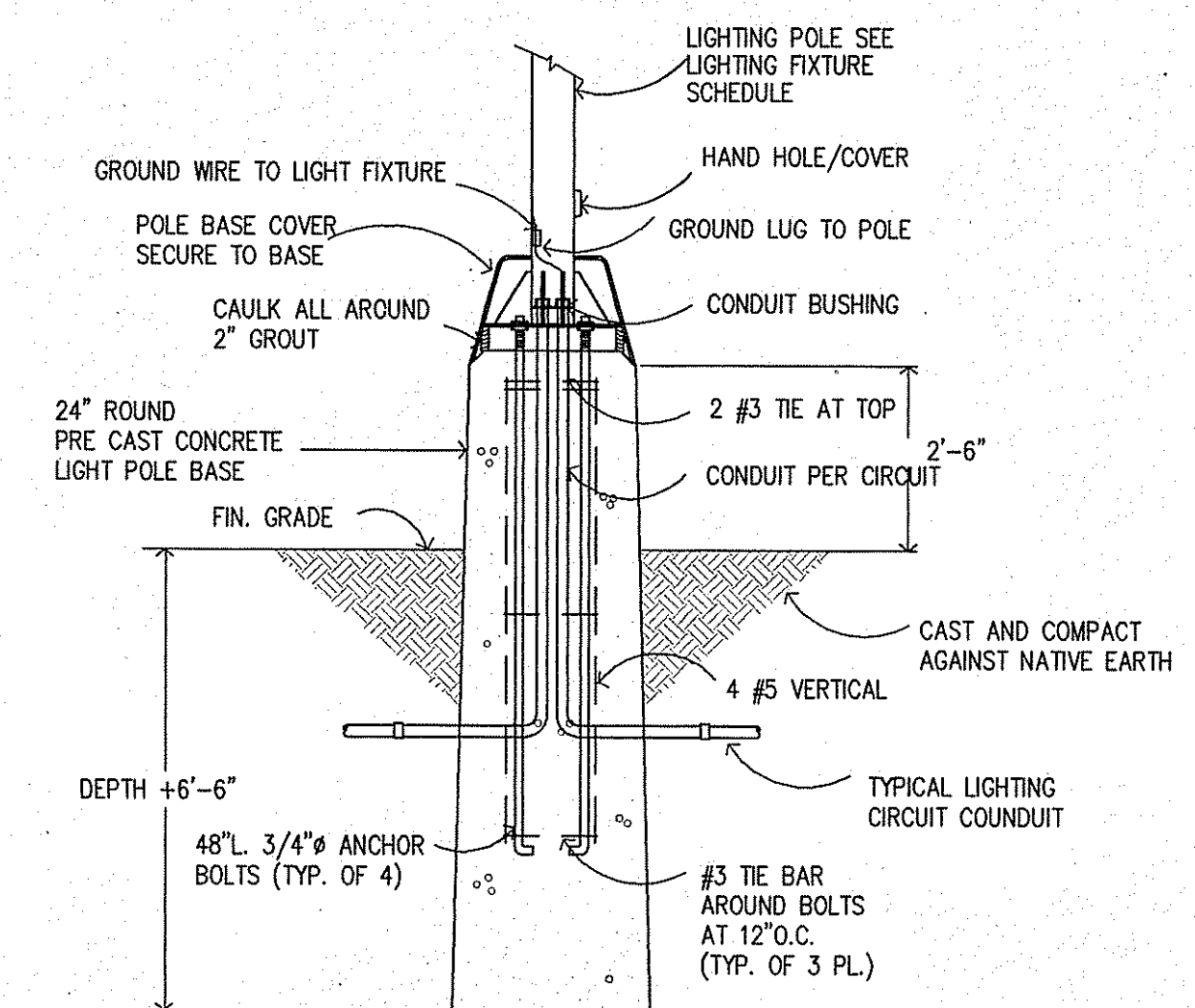
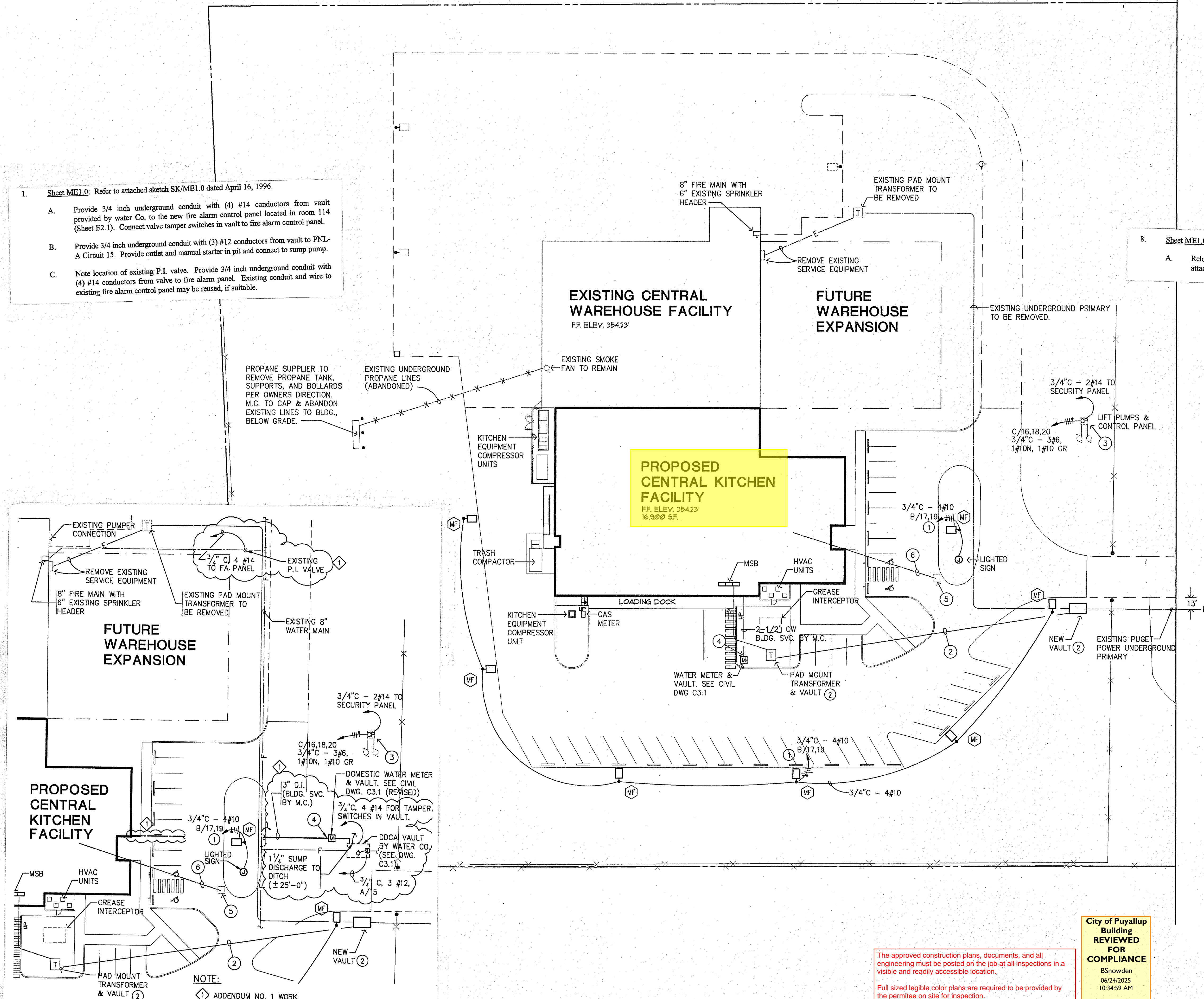
1. Sheet ME1.0: Refer to attached sketch SK/ME1.0 dated April 16, 1996.

- Provide 3/4 inch underground conduit with (4) #14 conductors from vault provided by water Co. to the new fire alarm control panel located in room 114 (Sheet E2.1). Connect valve tamper switches in vault to fire alarm control panel.
- Provide 3/4 inch underground conduit with (3) #12 conductors from vault to PNL-A Circuit 15. Provide outlet and manual starter in pit and connect to sump pump.
- Note location of existing P.I. valve. Provide 3/4 inch underground conduit with (4) #14 conductors from valve to fire alarm panel. Existing conduit and wire to existing fire alarm control panel may be reused, if suitable.

8. Sheet ME1.0

- Relocate water meter and CW building service to new location per partial Site Plan attached sketch SK/ME1.0.

Lower Left  
Corner This Page

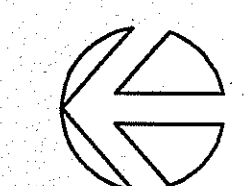


**CONCRETE LIGHT POLE BASE**  
SCALE: 1" = 30'-0"

**SITE PLAN**  
SCALE: 1" = 30'-0"

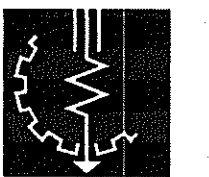
**GRAPHIC SCALE**

0 30 60 120

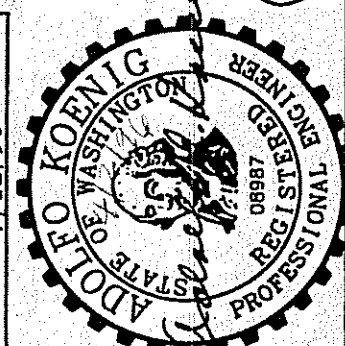


PRMH20250723

TREX WEST  
ENGINEERS, INC.  
2002 EAST 10TH AVE. SUITE 301  
TACOMA, WA 98409-7015  
TEL (206) 474-9449  
FAX (206) 474-9449



DESIGNED: EH  
DRAWN: DPH  
CHECKED: EH  
DATE: 4/2/96  
SCALE: 1" = 30'-0"

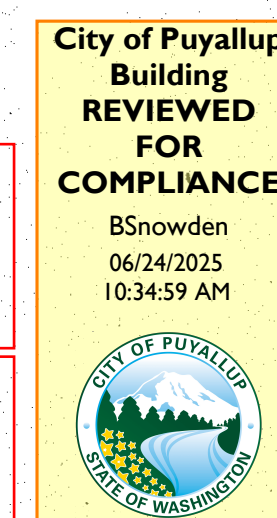


**SITTS & HILL  
ENGINEERS, INC.**  
CIVIL - STRUCTURAL - SURVEYING  
2901 S. 40th ST. TACOMA, WA 98409  
(206) 474-9449

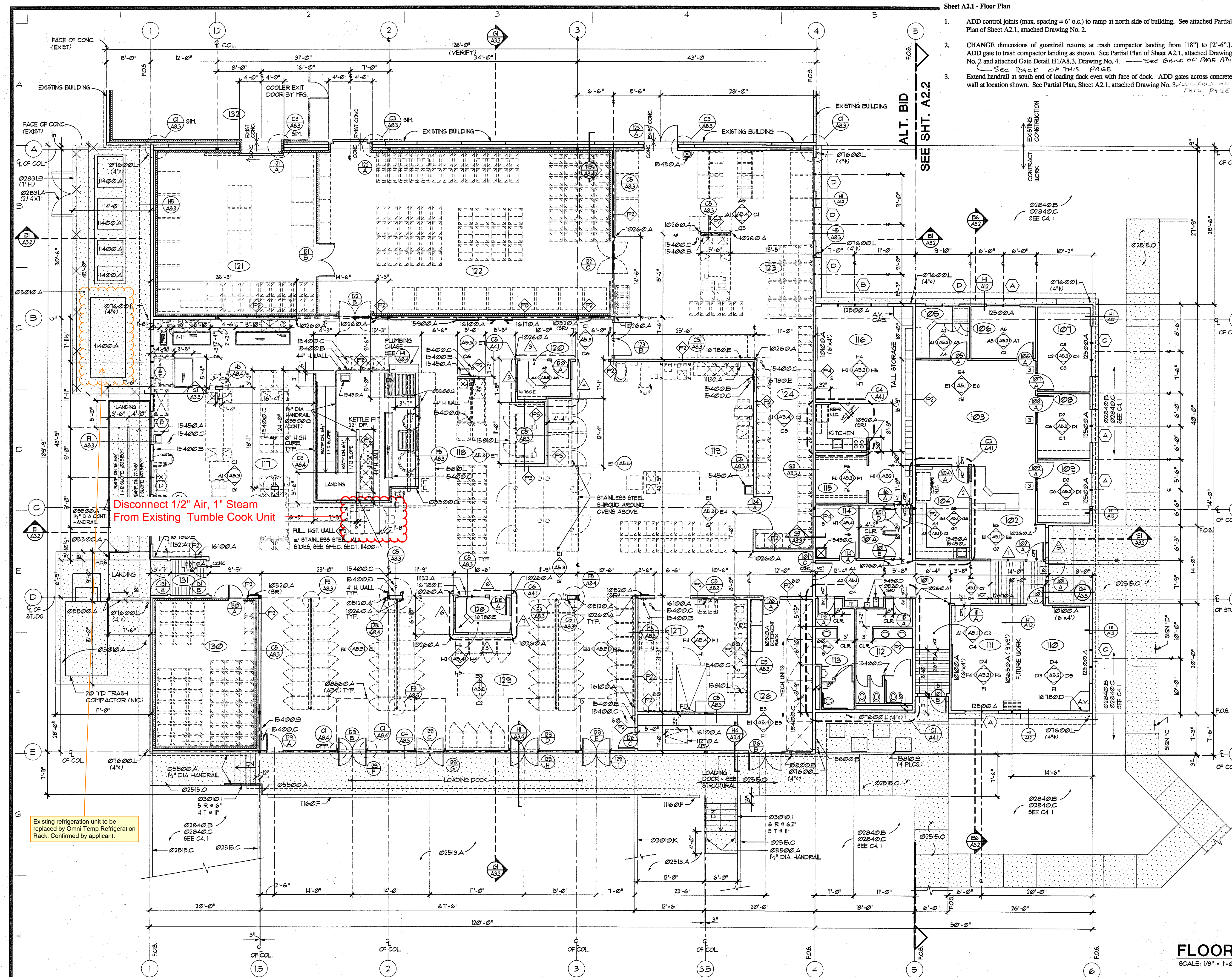
**PUYALLUP  
SCHOOL DISTRICT NO. 3**  
109 EAST PIONEER  
PUYALLUP, WASHINGTON 98372  
(206) 841-1301

**CENTRAL KITCHEN FACILITY**  
3607 17th St SW Puyallup, Washington  
SHEET TITLE: **MECHANICAL/ELECTRICAL  
SITE PLAN**  
SHEET NO.: **ME1.0**  
PROJECT NO.: **7351**

The approved construction plans, documents, and all engineering must be posted on the job at all inspections in a visible and readily accessible location.  
Full sized legible color plans are required to be provided by the permittee on site for inspection.  
Approval of submitted plans is not an approval of omissions or oversights by this office or non compliance with any applicable regulations of local government. The contractor is responsible for making sure that the building complies with all applicable codes and regulations of the local government.







- Sheet A2.1 - Floor Plan
- ADD control joints (max. spacing = 6' o.c.) to ramp at north side of building. See attached Partial Plan of Sheet A2.1, attached Drawing No. 2.
  - CHANGE dimensions of guardrail returns at trash compactor landing from [18"] to [2'-6"]. ADD gate to trash compactor landing as shown. See Partial Plan of Sheet A2.1, attached Drawing No. 2 and attached Gate Detail H1/A8.3, Drawing No. 4. See BACK OF THIS PAGE
  - Extend handrail at south end of loading dock even with face of dock. ADD gates across concrete wall at location shown. See Partial Plan, Sheet A2.1, attached Drawing No. 3. See BACK OF THIS PAGE

## ROOM LEGEND

Room Number	Room Name
101	ENTRY/CORRIDOR
102	PHONE AND DATA ROOM
103	WAITING
104	RECEPTION
105	WORKROOM
106	ACCOUNTING STAFF
107	STORAGE AND FILES
108	KITCHEN COORDINATOR
109	KITCHEN COORDINATOR
110	CONFERENCE
111	CONFERENCE
112	WOMEN'S TOILET ROOM
113	MEN'S TOILET ROOM
114	CUSTODIAL
115	COATS
116	STAFF BREAK ROOM
117	COLD FREEZING/STORAGE
118	COOKING
119	BAKERY
120	KITCHEN MANAGER
121	FREEZER
122	STORAGE COOLER
123	INGREDIENT ROOM
124	FINISHED BAKERY PRODUCT STORAGE
125	NOT USED
126	MECHANICAL
127	SCULLERY
128	DISPATCH MANAGER
129	CART LOADING
130	FINISHED PRODUCT COOLER
131	VESTIBULE
132	WAREHOUSE FREEZER

## MATERIALS KEY

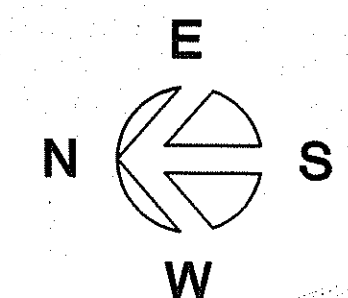
02513.A	ASPHALT CONCRETE - SEE CIVIL (THICKNESS)
02515.C	EXTRUDED CONCRETE CURB
02515.M	WHEELCHAIR RAMP PER WSDOT STANDARDS
02515.O	CONCRETE WALK
02831.A	CHAINLINK FENCE (HEIGHT)
02831.B	CHAINLINK GATE (WIDTH)
02840.B	LAWN - SEE LANDSCAPE
02840.C	PLANTING - SEE LANDSCAPE
03010.A	CONCRETE SLAB - SEE STRUCTURAL
03010.I	CAST-IN-PLACE CONCRETE STAIRS
03010.K	CONCRETE RETAINING WALL - SEE STRUCTURAL
03010.O	STEEL TUBE COLUMN - SEE STRUCTURAL
03500.A	GALVANIZED STEEL PIPE RAIL (FINISH)
03500.G	BLACK STEEL PIPE RAIL (FINISH)
03600.A	CAST-IN-PLACE CONCRETE STAIRS
03600.L	ABS DOWNSPOUT (DIA/FIN)
03600.O	SECTIONAL OVERHEAD DOOR - MANUAL (SIZE)
10100.A	WHITEBOARD (DIM)
10160.A	CORNER GUARD
10510.A	ADJUSTABLE STEEL SHELVING
10520.A	FIRE EXTINGUISHER AND CABINET (MOUNTING)
10650.A	OPERABLE PARTITION
1132.A	TELEVISION MOUNTING BRACKETS
1160.F	DOCK BUFFER
11710.A	DISAPPEARING STAIRS
12500.A	HORIZONTAL BLINDS
12610.A	ADHERED ENTRANCE MAT
15400.B	HOSE BIBB - SEE MECHANICAL
15400.C	FLOOR DRAIN - SEE MECHANICAL
15450.A	SINK - SEE MECHANICAL
15450.C	SERVICE SINK - SEE MECHANICAL
15450.D	DRINKING FOUNTAIN - SEE MECHANICAL
15450.J	HOT WATER DISPENSER - SEE MECHANICAL
15800.B	WEATHERPROOF LOUVER - SEE SCHEDULE
15810.B	HEAT EXCHANGER - SEE MECHANICAL
15810.D	OUTDOOR CONDENSING UNIT - SEE MECH
15810.L	KITCHEN HOOD - SEE MECHANICAL
15820.A	CONTROL PANEL - SEE MECHANICAL
16100.A	ELECTRICAL PANEL - SEE ELECTRICAL
16180.D	TV/AUDIO/VIDEO OUTLET - SEE ELEC.
16180.E	AV OUTLET - SEE ELECTRICAL

## NOTES

- SEE A42, A43, A44, A45 FOR DETAIL PLAN OF KITCHEN EQUIP.
- ALL INTERIOR PARTITIONS ARE UNLESS NOTED OTHERWISE.
- ALL EXTERIOR WALLS ARE UNLESS NOTED OTHERWISE.
- SEE WALL TYPE LEGEND ON SHEET A22

## FLOOR PLAN

SCALE: 1/8" = 1'-0"



PRMH20250723

**BLR+B**  
Bur Lawrence Rilling + Bates Architects P.S.  
1145 Broadway Plaza, Suite 1200, Tacoma, WA 98402-3519 • (360) 627-5559

DESIGNED: J.K.  
DRAWN: D.F.  
CHECKED: [Signature]  
DATE: 4/2/96  
SCALE: 1/8" = 1'-0"

REGISTERED ARCHITECT  
PAUL S. WISNICKI  
STATE OF WASHINGTON

**SITTS & HILL**  
**ENGINEERS, INC.**  
CIVIL - STRUCTURAL - SURVEYING  
2901 S. 40th ST. TACOMA, WA 98409 (206) 474-9449

PREPARED BY:  
**PUYALLUP**  
**SCHOOL DISTRICT NO. 3**  
109 EAST PIONEER  
PUYALLUP, WASHINGTON 98372  
(206) 841-1301

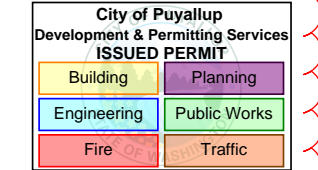
PROJECT:  
**CENTRAL KITCHEN FACILITY**  
3607 17th St SW Puyallup, Washington  
SHEET TITLE:  
**FLOOR PLAN**

SHEET NO.:  
**A2.1**  
PROJECT NO.:  
**7351**



# PLAN NOTES:

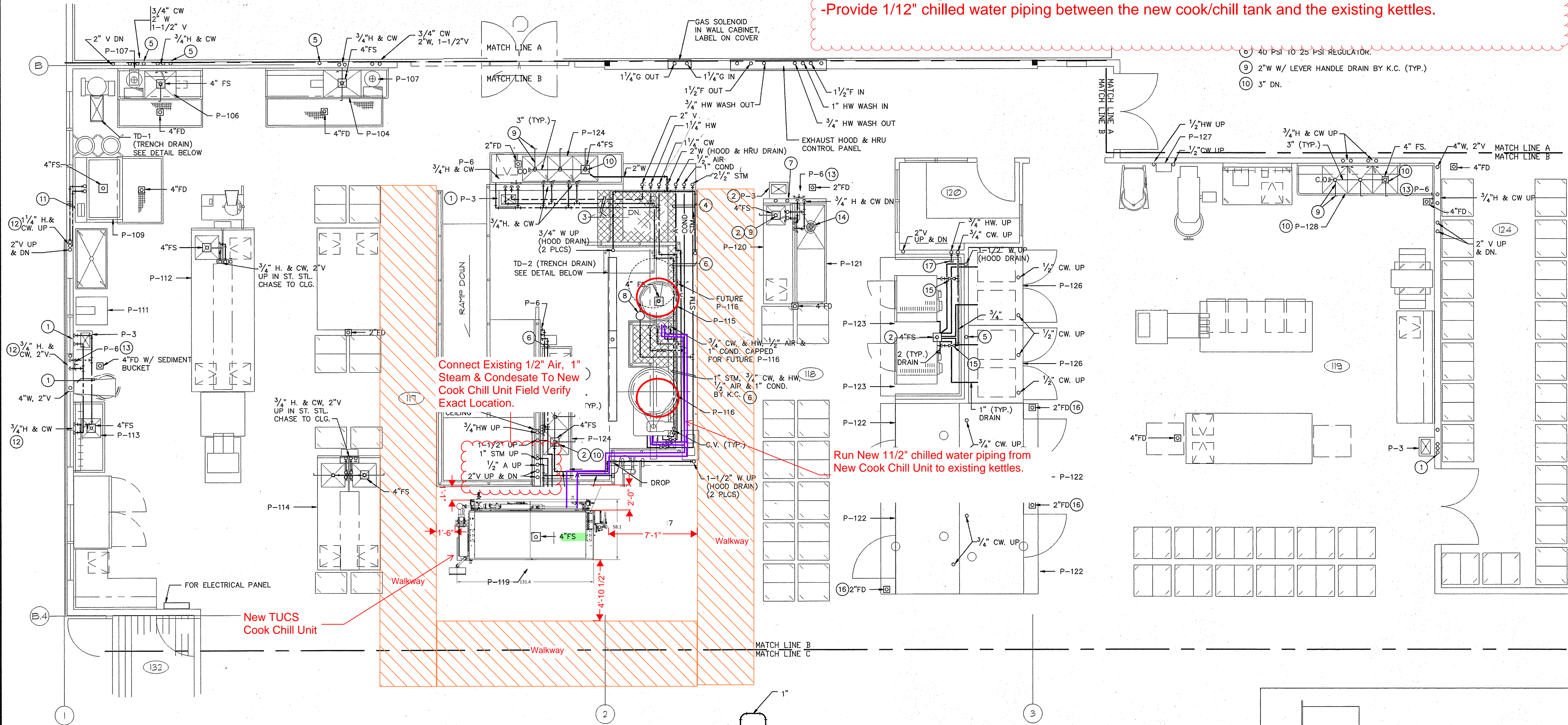
PRMH20250723



## Scope of Work:

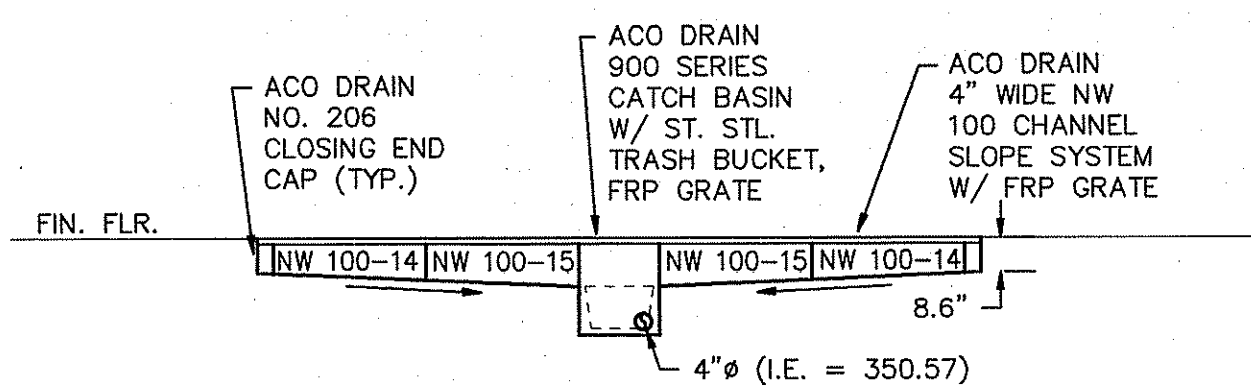
- Disconnect existing Compressed Air, Steam, Condensate, From Existing Tumble Chill Unit
- Connect Existing Compressed Air, Steam & Condensate to New Cook Chill Unit
- Provide 1/12" chilled water piping between the new cook/chill tank and the existing kettles.

(4) New refrigeration lines utilizing existing piping pathway. New lines will be 1-3/8 & 1/2 copper refrigeration lines with Armaflex insulation. Red-lines provided by, and approved by the Applicant.



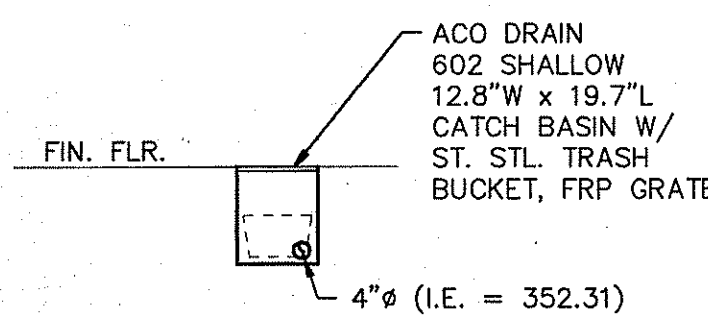
## KITCHEN PLUMBING PLAN B

SCALE: 1/4" = 1'-0"



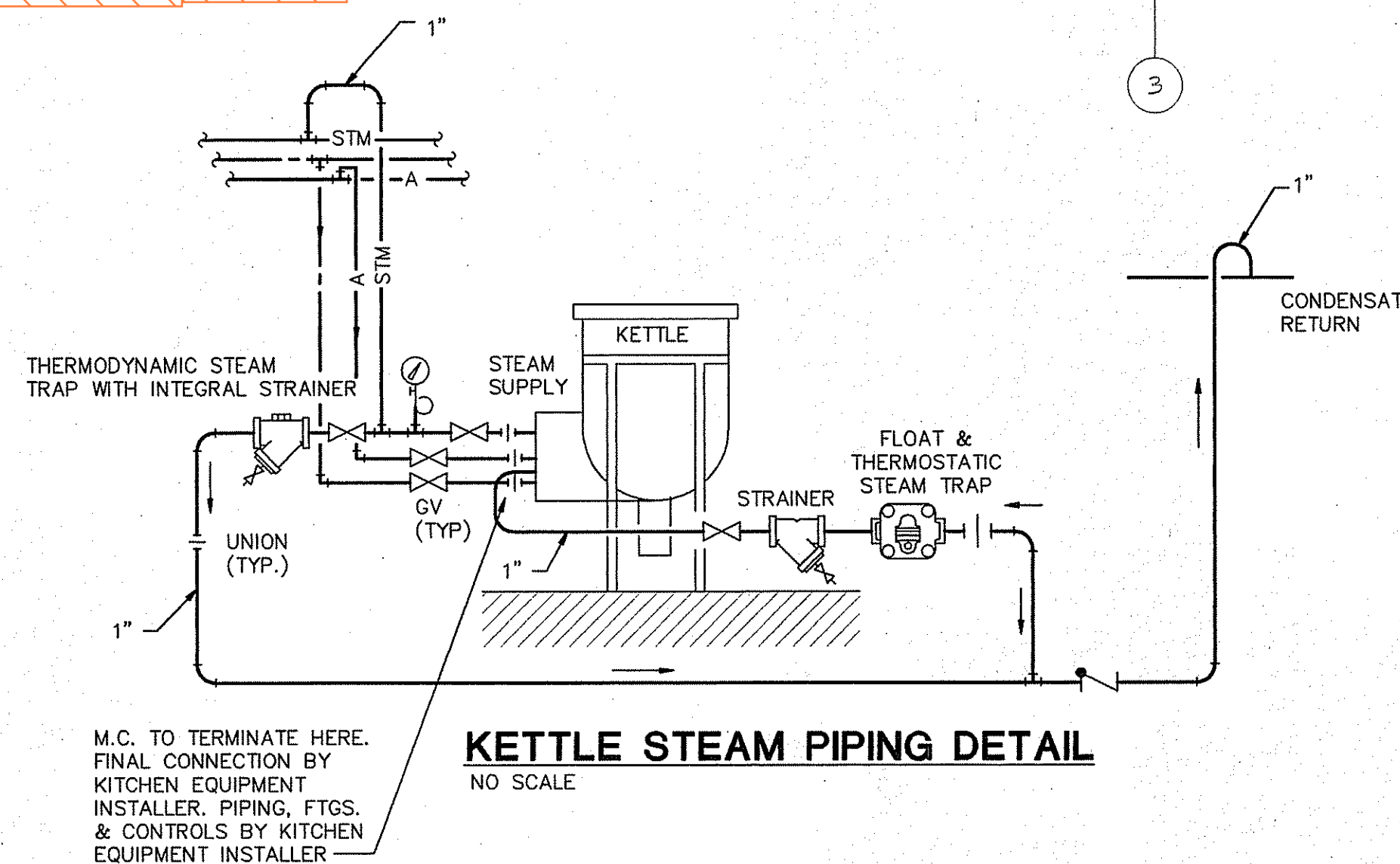
TRENCH DRAIN (TD-2) DETAIL

SCALE: 1/4" = 1'-0"



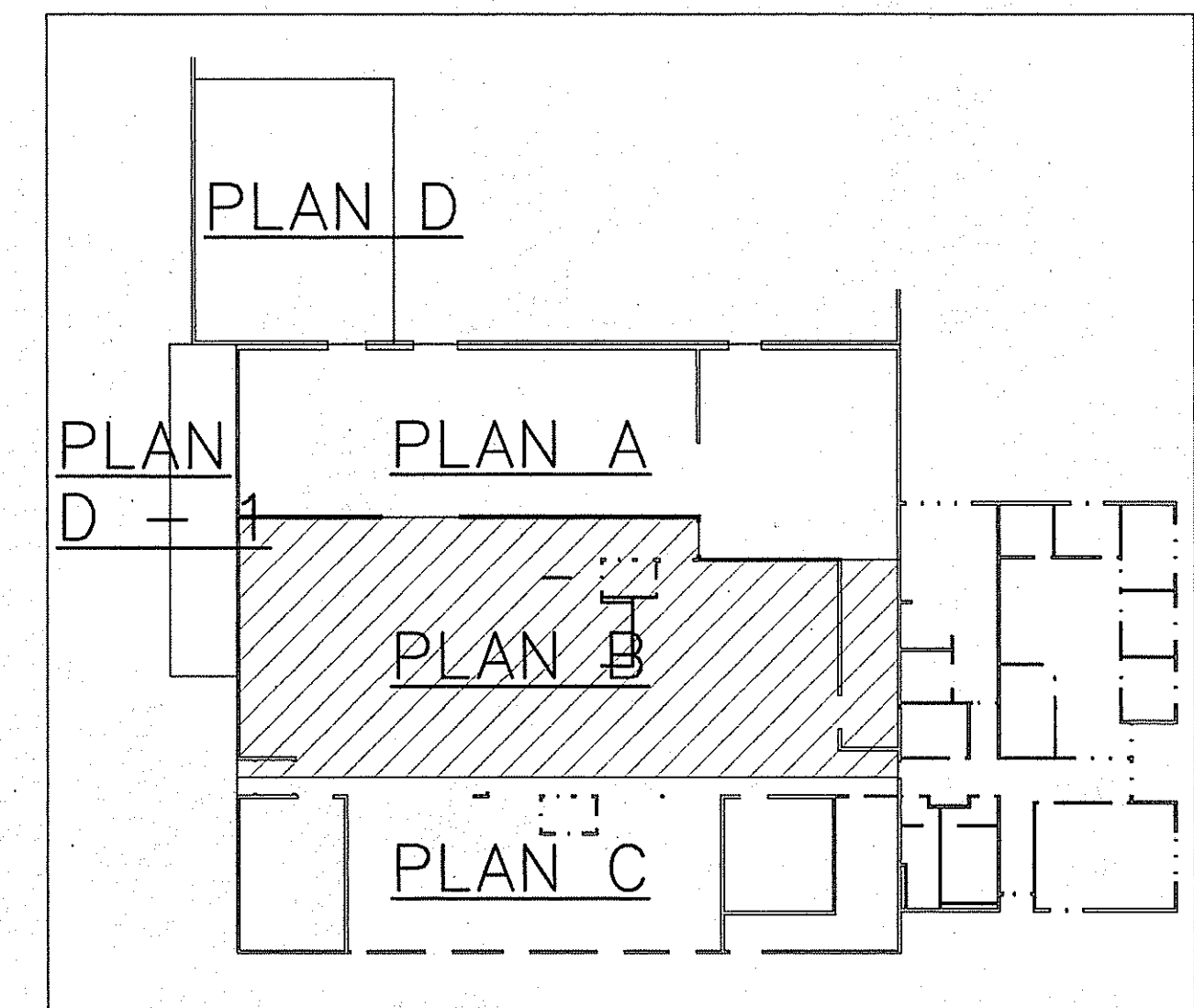
TRENCH DRAIN (TD-1) DETAIL

SCALE: 1/4" = 1'-0"



KETTLE STEAM PIPING DETAIL

NO SCALE



KEY PLAN

**SITTS & HILL  
ENGINEERS, INC.**  
CIVIL - STRUCTURAL - SURVEYING  
2901 S. 40th ST. TACOMA, WA 98409  
(206) 474-9449

**PUYALLUP  
SCHOOL DISTRICT NO. 3**  
109 EAST PIONEER  
PUYALLUP, WASHINGTON 98372  
(206) 841-1301

**CENTRAL KITCHEN FACILITY**  
3607 17th St SW Puyallup, Washington  
SHEET TITLE  
**1/4" KITCHEN PLUMBING  
PLAN B**

**M4.2**

PROJECT NO.

**7351**



LEGEND		
ITEM #	MODEL #	DESCRIPTION
1	TEBCCT-200-CWUV	200 GAL BATCH COOK/CHILL TANK, CWTO, ULTRAVIOLET

REVISIONS					PRMH20250723
ZONE	REV	DESCRIPTION	DATE	REVISED BY	
	A	RELEASED FOR APPROVAL	3/14/2025	T. AFFELDT	

City of Puyallup  
Development & Permitting Services  
ISSUED PERMIT

Building

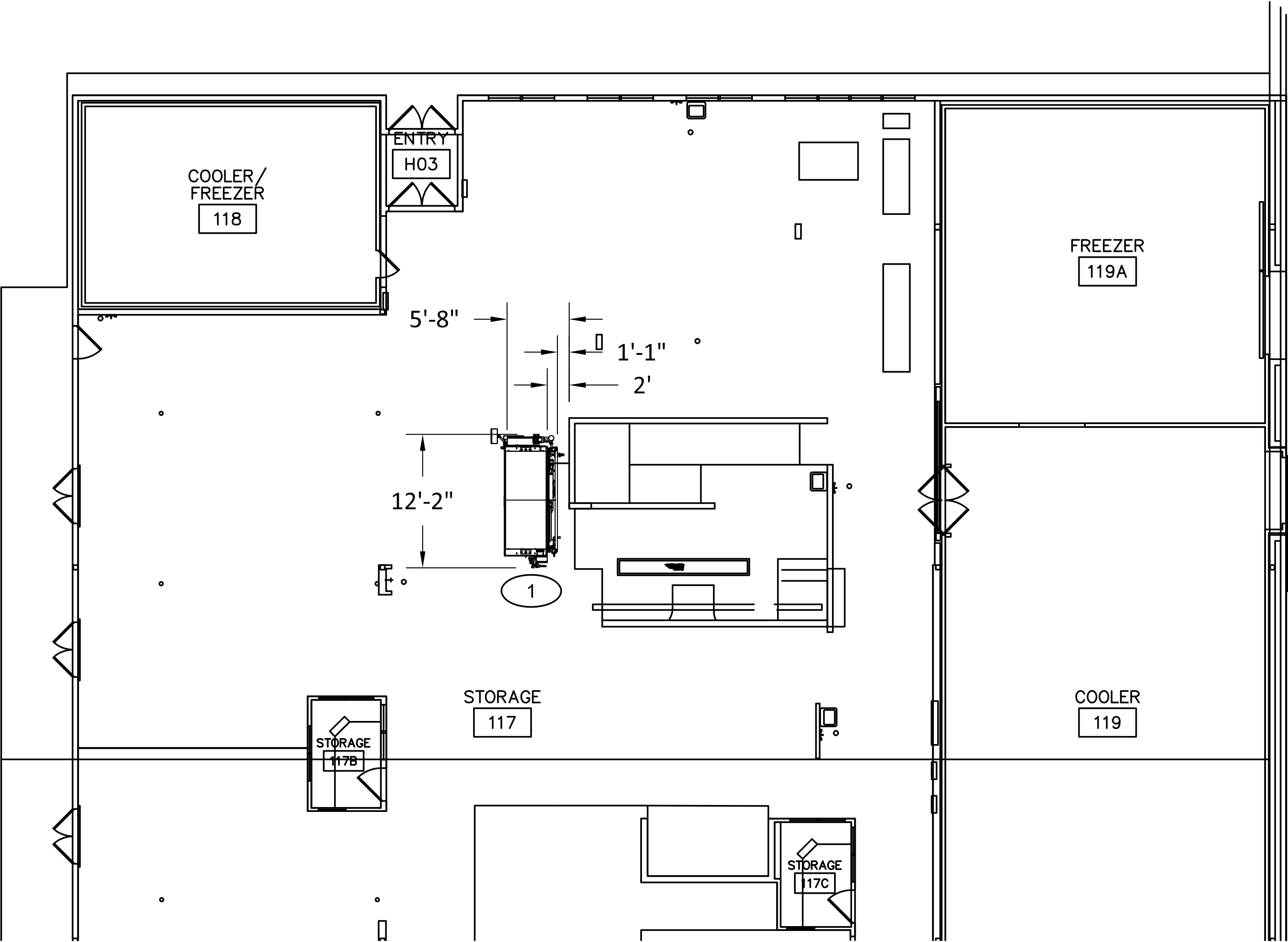
Engineering

Fire

Planning

Public Works

Traffic



# TUCS DRAWING APPROVAL

APPROVED BY: \_\_\_\_\_ DATE: \_\_\_\_\_

TUCS EQUIPMENT INC. MUST RECEIVE FINAL APPROVAL OF THIS DRAWING PRIOR TO FABRICATION. APPROVAL OF THIS DRAWING CERTIFIES THAT THE SPECIFIED EQUIPMENT HAS BEEN REVIEWED AND ALL OF THE INFORMATION CONTAINED WITHIN HAS BEEN APPROVED AND ACCEPTED BY PURCHASER

TITLE: PUYALLUP - QUOTE 24092 REV 8  FLOOR PLAN		UNLESS OTHERWISE SPECIFIED:	MODEL NUMBER	REV
		DIMENSIONS ARE IN INCHES AND ARE USED FOR REFERENCE ONLY.  ON-SITE VERIFICATION MAY BE REQUIRED.  DO NOT SCALE.	FLOOR PLAN	A
DATE: 3/14/2025	DRAWN BY: T. AFFELDT			SHEET: 1 OF 3

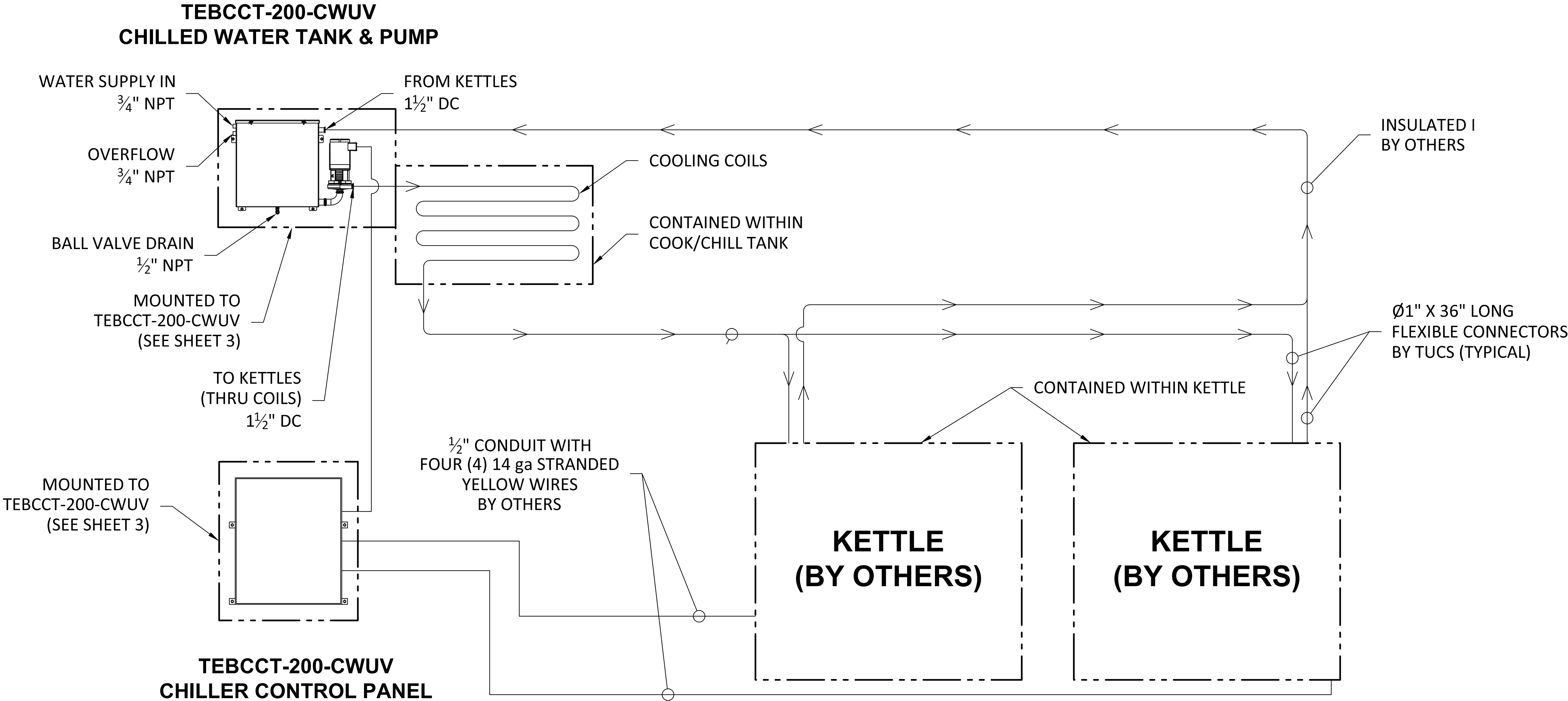
LEGEND								
** ELECTRICAL				WATER				
TOTAL AMPS	VOLTS	PHASE	PLUG IN	WATER SUPPLY IN	OVERFLOW	BALL VALVE DRAIN (NPT)	TO KETTLES	FROM KETTLES
(3.3)	208	3	NO	¾" NPT	* ¾" NPT	* ½" NPT	1 ½" DC	1 ½" DC

\* DIRECT CONNECTION TO DRAIN NOT REQUIRED, PLACEMENT NEAR FLOOR SINK SUGGESTED.  
\*\* ELECTRICAL SUPPLY AND CONTROLS PROVIDED THROUGH COOK/CHILLER CONTROL PANEL.

REVISIONS					PRMH20250723
ZONE	REV	DESCRIPTION		DATE	REVISED BY
	A	RELEASE FOR APPROVAL		3/14/2025	T. AFFELDT

City of Puyallup  
Development & Permitting Services  
ISSUED PERMIT

BuildingPlanning  
EngineeringPublic Works  
FireTraffic



## TUCS DRAWING APPROVAL

APPROVED BY: \_\_\_\_\_ DATE: \_\_\_\_\_

TUCS EQUIPMENT INC. MUST RECEIVE FINAL APPROVAL OF THIS DRAWING PRIOR TO FABRICATION. APPROVAL OF THIS DRAWING CERTIFIES THAT THE SPECIFIED EQUIPMENT HAS BEEN REVIEWED AND ALL OF THE INFORMATION CONTAINED WITHIN HAS BEEN APPROVED AND ACCEPTED BY PURCHASER

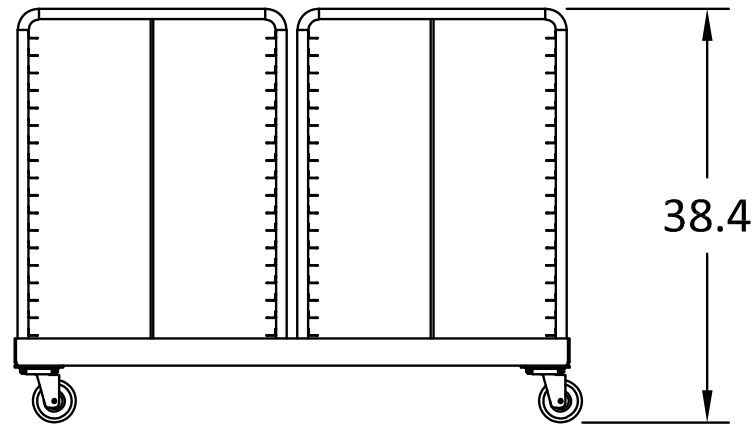
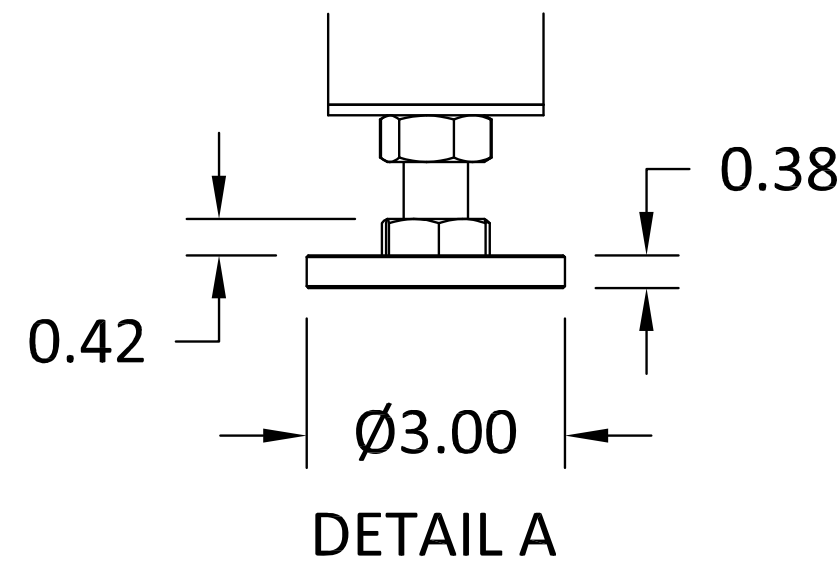
TITLE: PUYALLUP - QUOTE 24092 REV 8  CHILLED WATER TAKE OFF DIAGRAM		MODEL NUMBER	REV
		CHILLED WATER DIAGRAM	A
DATE: 3/14/2025	DRAWN BY: T. AFFELDT	TUCS EQUIPMENT INC. SHEET: 2 OF 3	

LEGEND															
COMPRESSED AIR				ELECTRICAL				EWON	STEAM		WATER		REFRIGERATION		
CFM	PSI	CONNECT SIZE	QUICK DISCONNECT	AMPS	VOLTS	PHASE	PLUG IN	CAT 5 OR WIRELESS	INPUT (NPT)	CONDENSATE RETURN (NPT)	POTABLE (NPT)	DRAIN (DC)	LIQUID	SUCTION	TOTAL BTUH
10	90	¼"	YES	17.1	208	3	NO	CAT 5	1"	1"	¾"	* 2"	(4X) ⅞"	(4X) 1⅜"	230,000

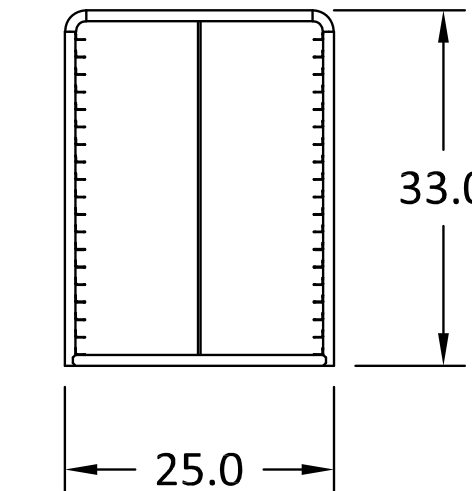
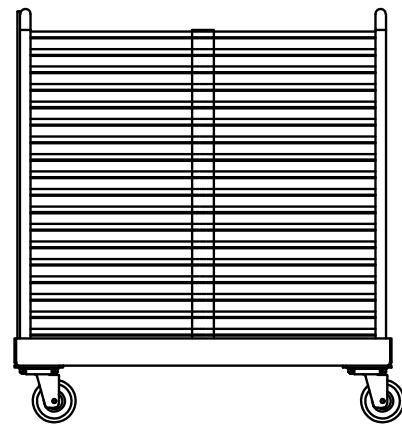
LEGEND NOTES:  
\* DIRECT CONNECTION TO DRAIN NOT REQUIRED, PLACEMENT NEAR FLOOR SINK SUGGESTED.

NOTES:

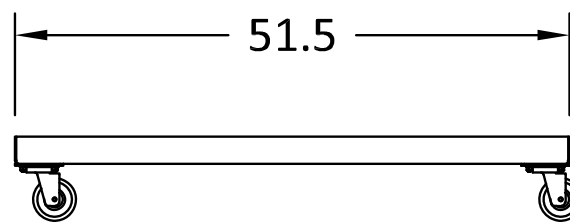
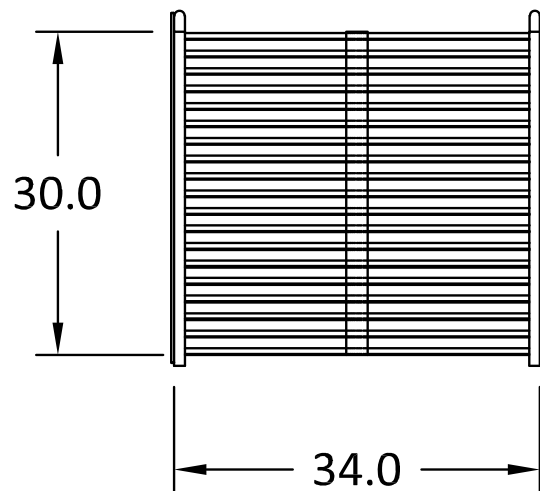
- 3' FLEXIBLE CONNECTIONS SHALL BE PROVIDED FOR COMPRESSED AIR, STEAM IN, STEAM OUT, AND POTABLE WATER.
- INCLUDES DIAL UP ALARM AND LOCKING COVER.
- SEE SHEET 2 FOR CHILLED WATER TAKE OFF DETAILS.
- 4X REFRIGERATION COILS BASED ON 4X CUSTOMER SUPPLIED 6HP (60,000 BTU) CONDENSING UNITS.



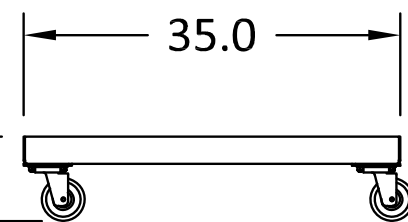
SINGLE DOLLY W/TWO SHELVING RACKS



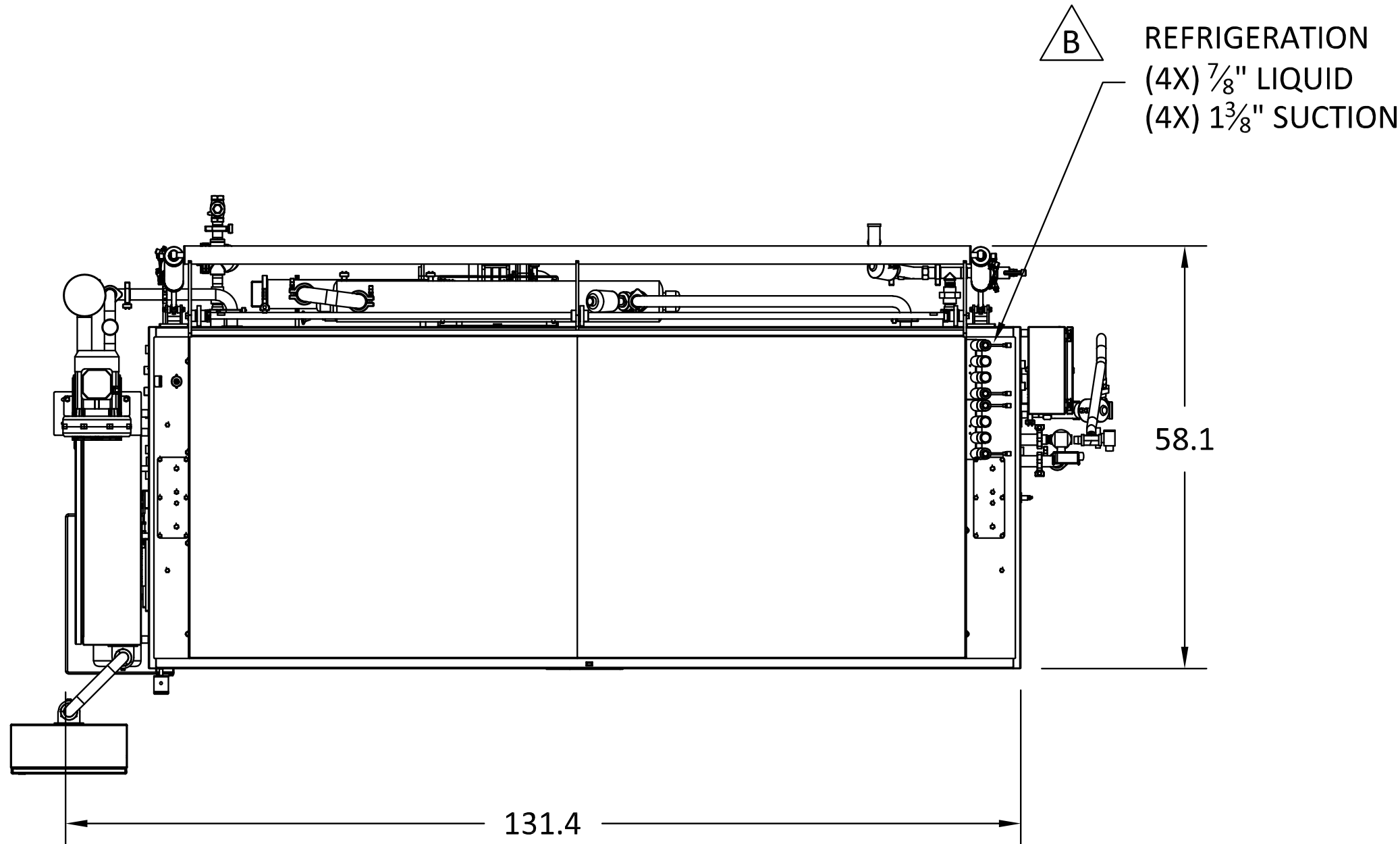
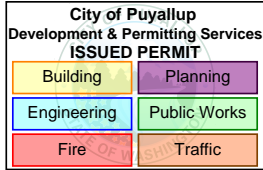
SHELVING RACK  
QTY. 4



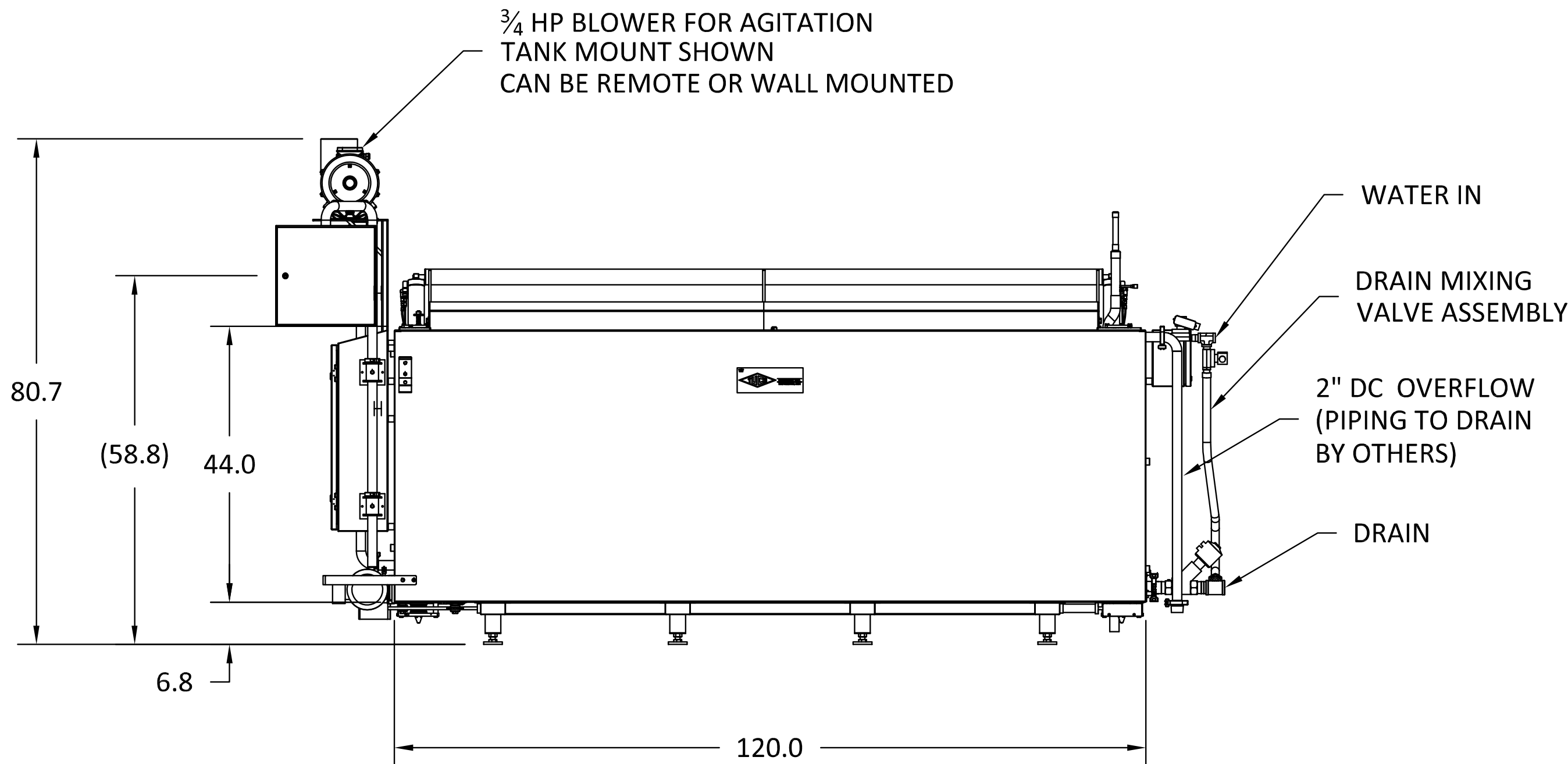
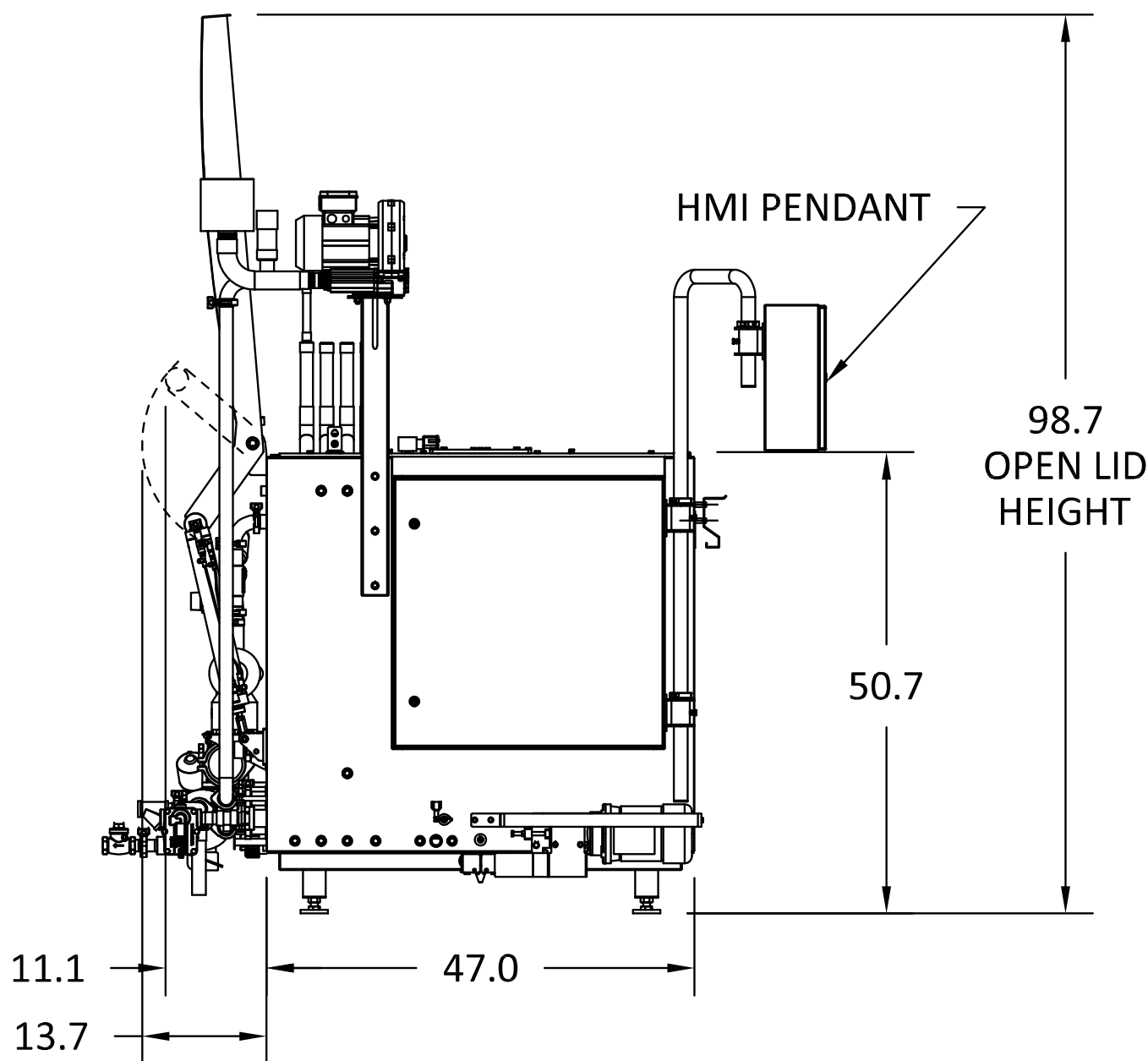
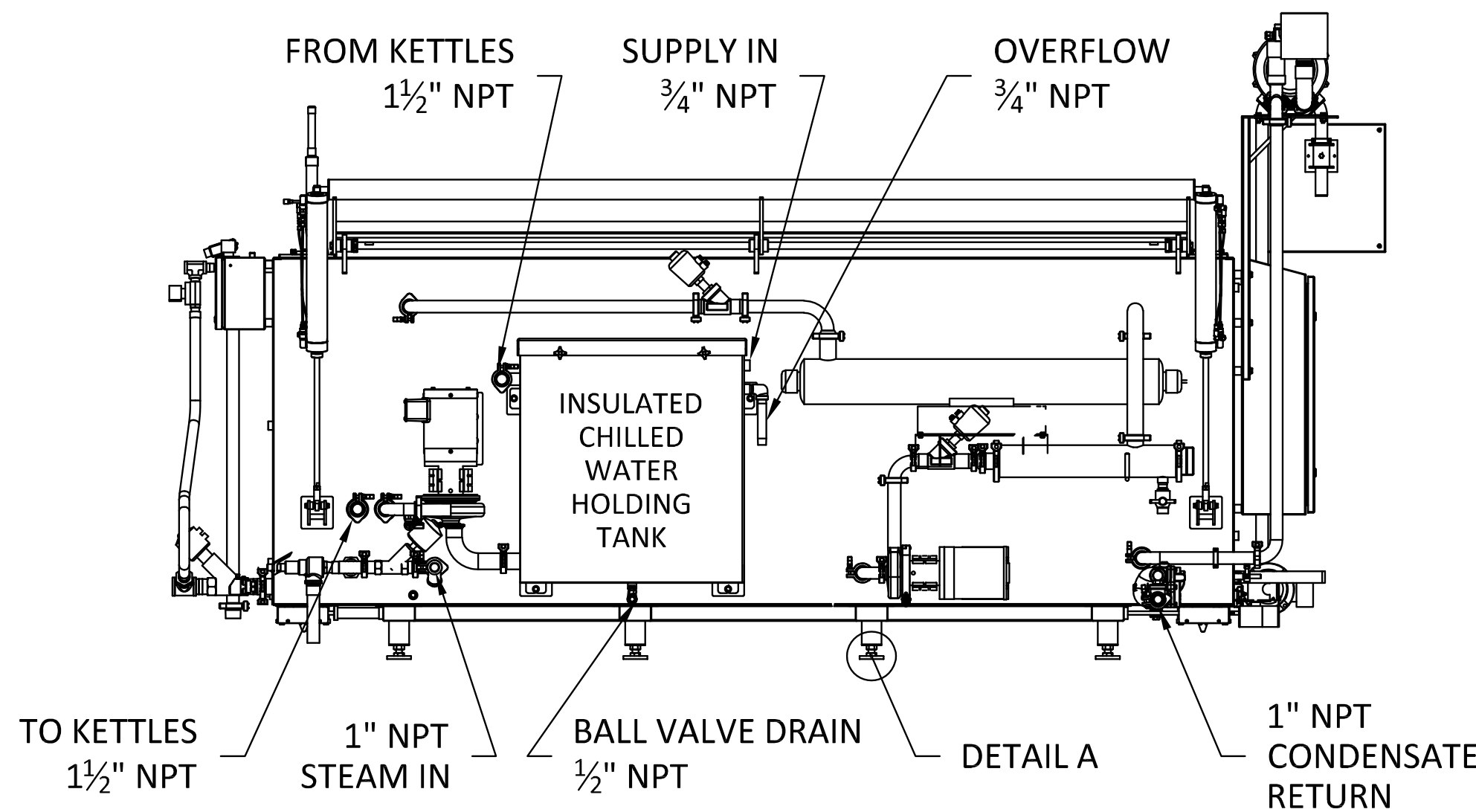
RACK DOLLY  
QTY. 2



REVISIONS					PRMH20250723
ZONE	REV	DESCRIPTION	DATE	REVISED BY	
	A	RELEASED FOR APPROVAL	3/14/2025	T. AFFELDT	
	B	4X REFRIGERATION CONNECTIONS WAS 2X AND ADDED NOTE 4	4/7/2025	T. AFFELDT	



See related Plumbing Permit: PRPL20250734



## TUCS DRAWING APPROVAL

APPROVED BY: \_\_\_\_\_ DATE: \_\_\_\_\_

TUCS EQUIPMENT INC. MUST RECEIVE FINAL APPROVAL OF THIS DRAWING PRIOR TO FABRICATION. APPROVAL OF THIS DRAWING CERTIFIES THAT THE SPECIFIED EQUIPMENT HAS BEEN REVIEWED AND ALL OF THE INFORMATION CONTAINED WITHIN HAS BEEN APPROVED AND ACCEPTED BY PURCHASER

TITLE: PUYALLUP - QUOTE 24092 REV 8

BATCH COOK CHILL TANK, 200 GALLON

DATE: 3/14/2025

DRAWN BY: T. AFFELDT

UNLESS OTHERWISE SPECIFIED:

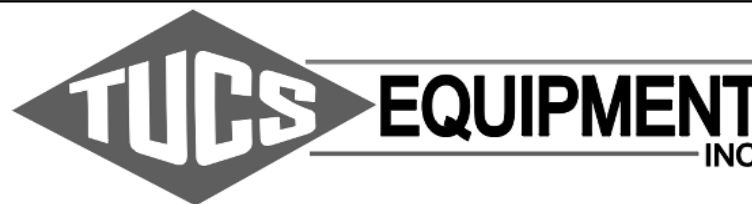
DIMENSIONS ARE IN INCHES AND ARE USED FOR REFERENCE ONLY.

ON-SITE VERIFICATION MAY BE REQUIRED.

DO NOT SCALE.

MODEL NUMBER

TEBCCT-200-CWUV



REV

B

SHEET:  
3 OF 3