

REFRIGERATION RACK  
ROOF OR HIGHER LEVEL

REFRIGERATION LINE

P-TRAP EVERY 15'

REFRIGERATION UNIT

USE 15% SIL-FOS ON ALL BRAZING

180° ELBOW  
SUCTION TEE

SUCTION "1"

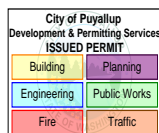
SUCTION TRUNK

VERTICAL  
SUCTION RISER

LIQUID "1"

LIQUID TRUNK

LIQUID LINE  
TO FIXTURE



## GENERAL NOTES

## GENERAL

1. CONTRACTORS SHALL RIVET ALL DIMENSIONS AND COORDINATE WITH OMNI TEMP REFRIGERATION.
2. REFER TO ALL NOTES ON THIS PLAN. ROUTING OF REFRIGERATION TUBING IS FURNISHED AS A GUIDE. IT WILL BE NECESSARY TO COPE WITH CONSTRUCTION CONDITIONS.
3. ALL CORED HOLES REQUIRED ON JOB ARE TO BE PROVIDED BY GENERAL CONTRACTOR.
4. ALL CORED HOLES SHALL BE REHOLEPRESSED AS REQUIRED BY LOCAL CODES BY GENERAL CONTRACTOR.
5. MINIMUM OF 30" CLEARANCE FOR ACCESSIBILITY AROUND COMPRESSOR RACK NEEDED FOR SERVICEABILITY. MINIMUM OF 36" CLEARANCE IN FRONT OF ELECTRICAL PANEL.
6. AFTER INSTALLATION OF REFRIGERATION LINES, GENERAL CONTRACTOR SHALL BACKFILL THE PITCH

## REFRIGERATION

NOTE: ALL COILS SUPPLIED WITH EXPANSION VALVES, THERMOSTATS AND SOLENOID VALVES MOUNTED AND PRE-WIRED IN EACH COIL SUPPLIED BY OMNITEMP REFRIGERATION (UNLESS OTHERWISE NOTED ON FRONTS).

- [illegible]

## ELECTRICAL

1. ELECTRICAL CONTRACTOR (SECTION 16) IS TO PROVIDE POWER FOR REFRIGERATION RACK AND ALL COLLS. ELECTRICAL CONNECTION REQUIRED FOR RACK CONTROL PANEL AND DEFROST SYSTEMS AS PER THE WIRING DIAGRAM.
2. ELECTRICAL CONTRACTOR (SECTION 16) TO PROVIDE 5-WIRE COLOR CODED SERVICE FROM THE TIMECLOCK AT THE REFRIGERATION PACKAGE TO BLOWER COLLS IN THE FUTURE FOR AUTOMATIC DEFROST, UNLESS THE BLUEPRINT INDICATES OTHERWISE.
3. ALL ELECTRICAL WIRES AND INSTALLATIONS SHALL BE IN ACCORDANCE WITH THE WIRING DIAGRAM AND LOCAL CODES.
4. ELECTRICAL CONTRACTOR (SECTION 16) TO PROVIDE ANY DISCONNECT SWITCH NEEDED BY LOCAL CODES.
5. FOR F.V.I. ITEMS, THERMOSTAT AND SOLENOID WIRED TO COIL BY FIELD ELECTRICIAN.
6. FIELD ELECTRICIAN TO CONNECT COPPER ELECTRICAL LINES TO RACK SYSTEM.

## PLUMBING

1. PLUMBING CONTRACTOR (OR EICN 15) TO PROVIDE HARD AGAR OR TYPE "L" COPPER CONDENSATE DRAIN LINES FOR WALK-IN FREEZERS AND REFRIGERATORS. FITCH TO BE MINIMUM OF 1/2" PER FOOT OF RUN IN WALK-IN FREEZERS. DRAIN LINES IN FREEZERS MUST BE INSULATED TO PREVENT FREEZING. DRAIN LINES MUST BE TRAPPED OUTSIDE OF BOX TO AVOID ENTRANCE OF WARM AIR. PROVIDE INDIVIDUAL DRAIN LINES FOR EACH EVAPORATOR, UNLESS OTHERWISE INDICATED.

															DATE: 1/19/2025				FIELD CONDITIONS						
															NOTES: SYSTEMS ARE UNDER										
															50# EACH										
PROJECT NAME: FUYALLUP SCHOOL - TUC SYSTEM															REP: SCHULZ & ASSOC.										
LOCATION: FUYALLUP, WASH															CONTACT: JEFF										
DES BY: HANS															CONSULTANT:										
ITEM / MODEL OF RACK: OTBLRACH4-603-448															CONTACT:										
SIZE / WEIGHT OF RACK: 144" X 40" X 70" 4500#																									
															PWR										
ITEM	SYS	DESCRIPTION	BTU	FX	SUC	R	COMPRESSOR	CAP	HP	PH			RLA	LRA	L1	L2	L3	QTY	COL	FAN	DEF	PH	WT	VOLT	COL
CIRCUIT 1	A	TUC CIRCUIT 1/2" TUBING 185'	600	32	20	R-448a	4CESA520L4QY	65.9	6	2093			25.9	150.0	26.9	26.9	26.9	1	2	CIRCUIT OF 165 1/2" TUBING BY TUC'S					
CIRCUIT 2	B	TUC CIRCUIT 1/2" TUBING 185'	600	32	20	R-448a	4CESA520L4QY	65.9	6	2093			25.9	150.0	26.9	26.9	26.9	1	2	CIRCUIT OF 165 1/2" TUBING BY TUC'S					
CIRCUIT 3	C	TUC CIRCUIT 1/2" TUBING 165'	600	32	20	R-448a	4CESA520L4QY	65.9	6	2093			25.9	150.0	26.9	26.9	26.9	1	2	CIRCUIT OF 165 1/2" TUBING BY TUC'S					
CIRCUIT 4	D	TUC CIRCUIT 1/2" TUBING 165'	600	32	20	R-448a	4CESA520L4QY	65.9	6	2093			25.9	150.0	26.9	26.9	26.9	1	2	CIRCUIT OF 165 1/2" TUBING BY TUC'S					
							COND, FANS		0.5	2091			2.2		13.2	13.2	8.8								
													Line Amps	120.8	120.8	116.4									
													Conn	120.8											
													Min	126.0											
													Max	190.0	209b	3ph									

MAIN ELEC. DISCONNECT	LENGTH (INCHES)
200 Amps	154
400 Amps	156

ETL LISTED  
CONFORMS TO  
UL STD 1995

OMNITEMP

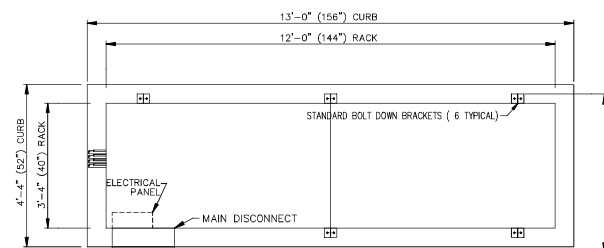
CRONK MADE

RACK OVERALL DIMENSIONS		
DEPTH (INCHES)	WIDTH (INCHES)	HEIGHT (INCHES)
44	53	78

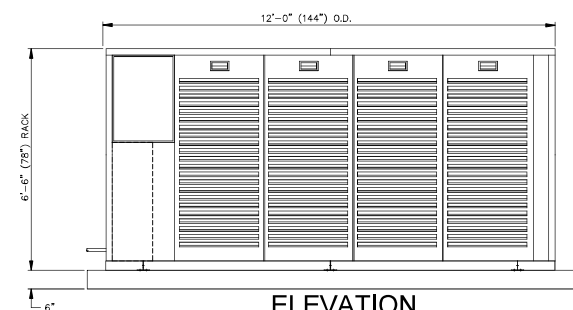
MODEL: OTBL8-AC-H

ISOMETRIC  
(FRONT VIEW)

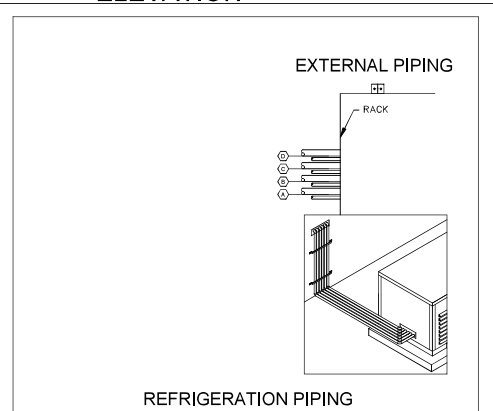
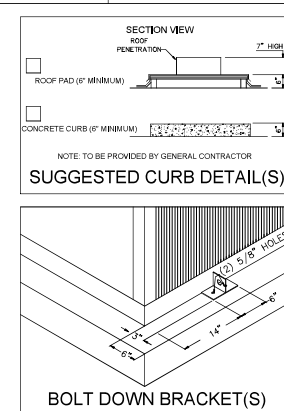
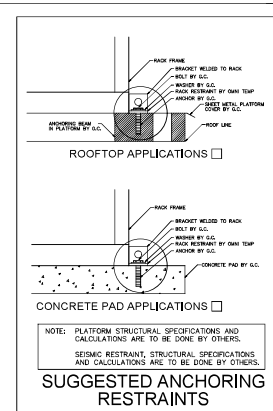
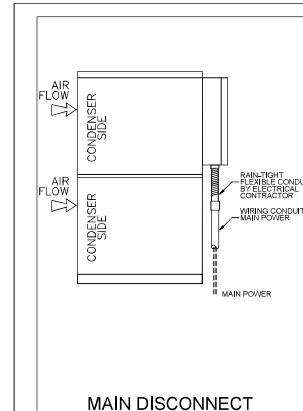
The diagram includes a front view of the server rack, an isometric view showing airflow direction with arrows labeled 'AIR FLOW', and a table of overall dimensions. The rack is labeled 'OTBL8-AC-H' and 'CRONK MADE'. The isometric view shows four bays with horizontal slots and a control panel on the left. Arrows indicate airflow from the front of the rack into the bays.



### PLAN VIEW



## ELEVATION



The approved construction plans, documents, and all engineering must be posted on the job at all inspections in a visible and readily accessible location.

Full sized legible color plans are required to be provided by the permittee on site for inspection.

Approval of submitted plans is not an approval of omissions or oversights by this office or non compliance with any applicable regulations of local government. The contractor is responsible for making sure that the building complies with all applicable codes and regulations of the local government.

**City of Puyallup  
Building  
REVIEWED  
FOR  
COMPLIANCE**

BSnowden  
06/24/2025  
10:35:09 AM



MAIN DISCONNECT



**OmniTeam, Inc.**  
 Manufacturer of OmniTemp Refrigeration Products  
 4380 Ayers Avenue, Vernon, California 90058  
 (800) 423-9660 (Toll-Free) - (562) 862-7466 (Fax)  
 Web page address: [www.omniteaminc.com](http://www.omniteaminc.com)  
 E-Mail: [Albertt@omniteaminc.com](mailto:Albertt@omniteaminc.com)

# Puyallup School Tuc System

## Puyallup, WA

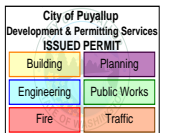
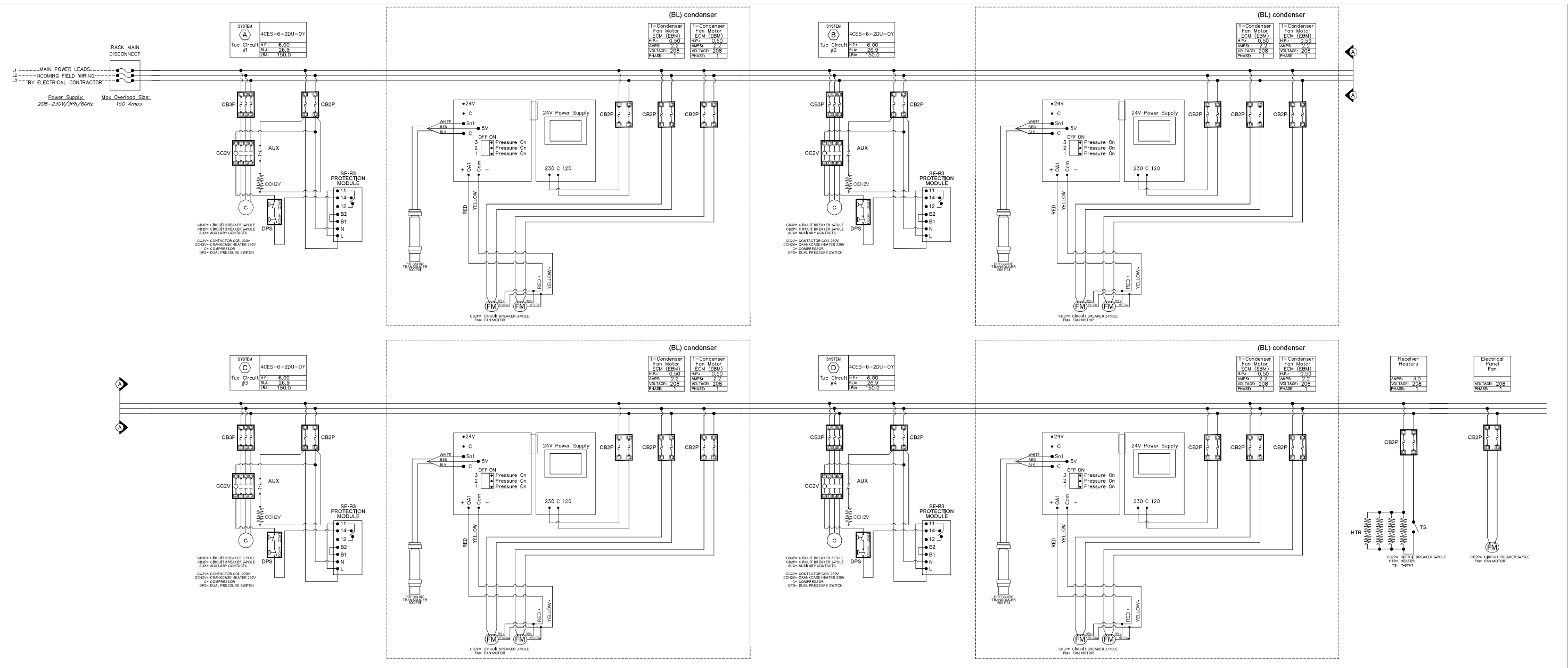
### Refrigeration Plan

DATE: 01/17/25	JOB #: 18258-R
SCALE: <b>None</b>	
DESIGNED BY: <b>Hans Haasis, Jr.</b>	
DRAWN BY: <b>Albert Lamua</b>	

SHEET NUMBER:  
**R1**  
**of**  
**2**

THIS PLAN IS PRIMARILY A GENERAL ARRANGEMENT OF EQUIPMENT FOR THE CONVENIENCE OF CONTRACTORS AND IS MADE FROM AVAILABLE INFORMATION, BUT MEASUREMENTS ARE TO BE VERIFIED ON THE JOB. PLUMBING, ELECTRICAL, REFRIGERATION, AND VENT OUTLETS HAVE BEEN LOCATED AS ACCURATELY AS POSSIBLE AND ARE INTENDED TO SUIT EQUIPMENT TO BE SUPPLIED. WE ACCEPT NO RESPONSIBILITY FOR WORK DONE BY SAID CONTRACTORS AND WILL NOT STAND ANY EXPENSE FOR CHANGES MADE NECESSARY BY LOCAL BUILDING CODES, ORDINANCES, STRUCTURAL CONDITIONS, OR BY THE SUBSTITUTION OR CHANGE OF EQUIPMENT SPECIFIED ON THIS PLAN. THIS DRAWING IS THE PROPERTY OF OMNITEMP INCORPORATED. IT IS NOT TO BE REPRODUCED OR DISTRIBUTED, EITHER IN WHOLE OR IN PART.

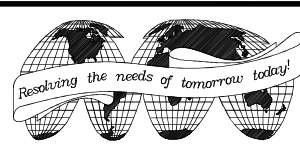
REMOTE REFRIGERATION INTERNAL WIRING DIAGRAM



PRMH20250723

THIS PLAN IS PRIMARILY A GENERAL ARRANGEMENT OF EQUIPMENT FOR THE CONVENIENCE OF CONTRACTORS AND IS MADE FROM AVAILABLE INFORMATION. BUT MEASUREMENTS ARE TO BE VERIFIED ON THE JOB. PLUMBING, ELECTRICAL, REFRIGERATION, AND VENT OUTLETS HAVE BEEN LOCATED AS ACCURATELY AS POSSIBLE AND ARE INTENDED TO SUIT EQUIPMENT TO BE SUPPLIED. WE ACCEPT NO RESPONSIBILITY FOR WORK DONE BY SAID CONTRACTORS AND WILL NOT STAND ANY EXPENSE FOR CHANGES MADE NECESSARY BY LOCAL BUILDING CODES, ORDINANCES, STRUCTURAL CONDITIONS, OR BY THE SUBSTITUTION OR CHANGES IN EQUIPMENT SHOWN ON THIS PLAN. THIS DRAWING IS THE PROPERTY OF OMNITEAM INCORPORATED. IT IS NOT TO BE REPRODUCED OR DISTRIBUTED, EITHER IN WHOLE OR IN PART.

NO.	REVISION	DATE	BY	NO.	REVISION	DATE	BY
A	Initial Design Release to Schultz Associates (Jeffrey Schult)	01/20/25	APL				
A1	Submitted Release to Borgreen Ellingsen (Michelle Haim)	02/25/25	APL				
A2	Revised Rack Design (ECC 04-01-25 IH) per Borgreen Ellingsen (Derrick Webster)	04/01/25	APL				



**OmniTeam, Inc.**  
Manufacturer of OmniTemp Refrigeration Products  
4380 Ayers Avenue, Vernon, California 90058  
(800) 423-9660 (Toll-Free) - (562) 862-7466 (Fax)  
Web page address: [www.omniteaminc.com](http://www.omniteaminc.com)  
E-Mail: [AlbertL@omniteaminc.com](mailto:AlbertL@omniteaminc.com)

**Puyallup School Tuc System**  
**Puyallup, WA**  
**Refrigeration Plan**

DATE: 01/17/25  
SCALE: None  
DESIGNED BY: Hans Haasis, Jr.  
DRAWN BY: Albert Lamug

JOB #: 18258-R  
SHEET NUMBER: **R2 of 2**