

# Bradley Heights

Section 3, Township 19 N, Range 4 E, Willamette Meridian, Pierce County, Washington

**PROJECT DESCRIPTION**  
SITE DEVELOPMENT IMPROVEMENTS, INCLUDING CLEARING, GRADING, RETAINING WALLS, PARKING LOT, STORM DRAINAGE, SANITARY SEWER MAIN, WATER MAIN FOR 236 UNIT MULTI-FAMILY DEVELOPMENT.

**SITE ADDRESS:** 202 27TH AVE SE  
**PARCEL NUMBER:** 041903-6-006

**ZONING:** RM-CORE

**ENGINEER/SURVEYOR:**  
AZURE GREEN CONSULTANTS  
409 EAST PIONEER  
PUYALLUP, WA 98372  
PHONE: 253.770.3144

**OWNER:**  
BRADLEY HEIGHTS SS, LLC  
614 BOYLSTON AVE E  
SEATTLE, WA 98102

**EROSION & SEDIMENT INSPECTION**  
PRIOR TO STARTING SITE WORK, REQUEST AN INSPECTION FOR EROSION AND SEDIMENT INSPECTION CODE THROUGH THE PERMIT PORTAL OR BY CONTACTING THE INSPECTOR DIRECTLY.

**BROKEN CURB, GUTTER, OR SIDEWALK**  
ANY PUBLIC CURB, GUTTER, OR SIDEWALK BROKEN NOW OR DURING THE COURSE OF CONSTRUCTION SHALL BE REMOVED AND REPLACED PER CITY STANDARDS.

CALL BEFORE YOU DIG  
IT IS THE LAW  
**811**

## GENERAL NOTES

1. All work in City right-of-way requires a permit from the City of Puyallup. Prior to any work commencing, the general contractor shall arrange for a preconstruction meeting at the Development Services Center to be attended by all contractors that will perform work shown on the approved engineering plans, representatives from all applicable utility companies, the project owner and appropriate city staff. Contact Engineering Services at (253-841-5568) to schedule the meeting. The contractor is responsible to have their own set of approved plans at the meeting.

2. After completion of all items shown on these plans and before acceptance of the project the contractor shall obtain a "punch list" prepared by the City's inspector detailing remaining items of work to be completed. All items of work shown on these plans shall be completed to the satisfaction of the City prior to acceptance of the water system and provision of sanitary sewer service.

3. All materials and workmanship shall conform to the Standard Specifications for Road, Bridge, and Municipal Construction (hereinafter referred to as the "Standard Specifications"), Washington State Department of Transportation and American Public Works Association, Washington State Chapter, latest edition, unless superseded or amended by the City of Puyallup City Standards for Public Works Engineering and Construction (hereinafter referred to as the "City Standards").

4. A copy of these approved plans and applicable city developer specifications and details shall be on site during construction.

5. Any revisions made to these plans must be reviewed and approved by the developer's engineer and the City prior to any implementation in the field. The City shall not be responsible for any errors and/or omissions on these plans.

6. The contractor shall have all utilities verified on the ground prior to any construction. Call (811) at least two working days in advance. The owner and his/her engineer shall be contacted immediately if a conflict exists.

7. Any structure and/or obstruction that requires removal or relocation relating to this project shall be done so at the developer's expense.

8. Locations of existing utilities are approximate. It shall be the contractor's responsibility to determine the true elevations and locations of hidden utilities. All visible items shall be the engineer's responsibility.

9. The contractor shall install, replace, or relocate all signs, as shown on the plans or as affected by construction, per City Standards.

10. Power, street light, cable, and telephone lines shall be in a trench located within a 10-foot utility easement adjacent to public right-of-way. Right-of-way crossings shall have a minimum horizontal separation from other utilities (sewer, water, and storm) of 5 feet.

11. All construction surveying for extensions of public facilities shall be done under the direction of a Washington State licensed land surveyor or a Washington State licensed professional civil engineer.

12. During construction, all public streets adjacent to this project shall be kept clean of all material deposits resulting from on-site construction, and existing structures shall be protected as directed by the City.

13. Certified record drawings are required prior to project acceptance.

14. A NPDES Stormwater General Permit may be required by the Department of Ecology for this project. For information contact the Department of Ecology, Southwest Region Office at (360)407-6300.

15. Any disturbance or damage to Critical Areas and associated buffers, or significant trees designated for preservation and protection shall be mitigated in accordance with a Mitigation Plan reviewed and approved by the City's Planning Division. Preparation and implementation of the Mitigation Plan shall be at the developer's expense.

## SURVEY MONUMENTS

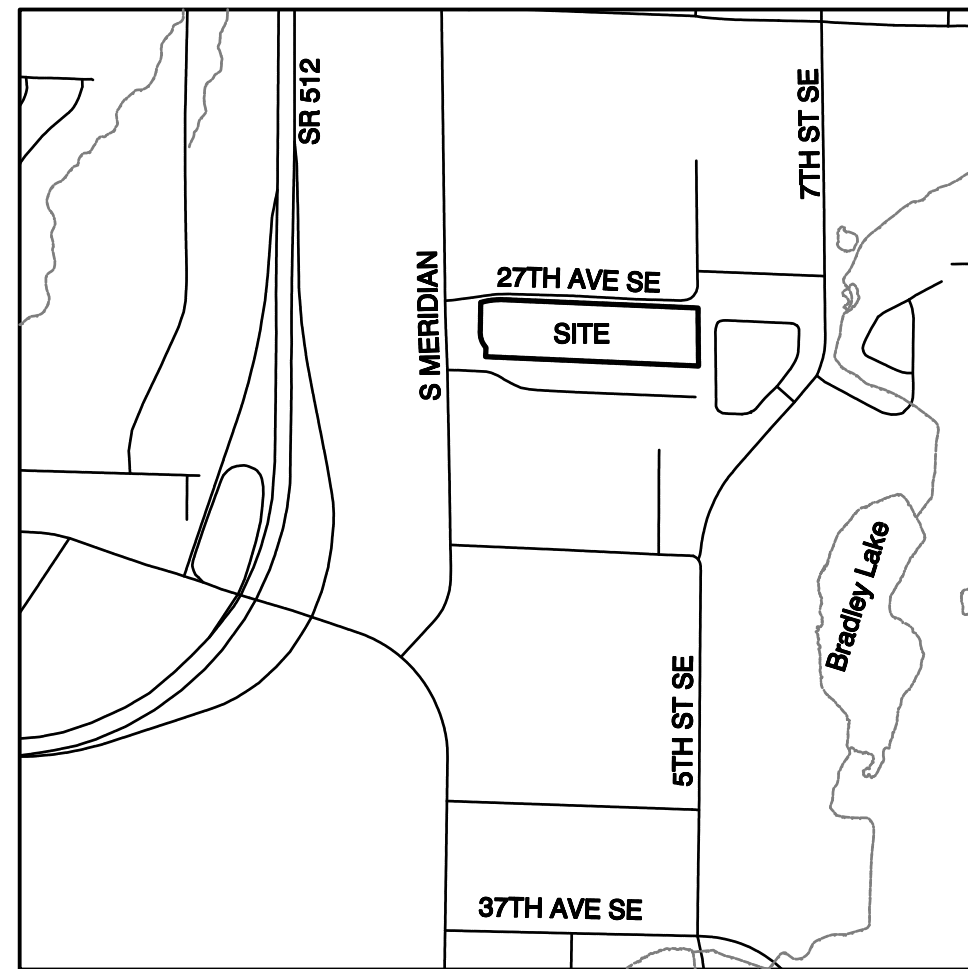
Contractor is responsible for protecting all survey monuments within the area of work. If it is necessary to disturb a survey monument, a permit must be requested in advance from the Department of Natural Resources. The developer must pay the cost of repairing or replacing the survey monument and is responsible for all contractors working for them. Reference WAC 332-120.

## SHEET INDEX

1 G-1 Cover Sheet	42 AD-1 ADA Route/Grading Detail
2 G-2 Existing Conditions	43 AD-2 ADA Route/Grading Detail
3 G-3 Horizontal Control	44 AD-3 ADA Route/Grading Detail
4 G-4 Demolition Plan	45 AD-4 ADA Route/Grading Detail
5 G-5 TESC Plan	46 AD-5 ADA Route/Grading Detail
6 G-6 TESC Notes	47 AD-6 ADA Route/Grading Detail
7 G-7 TESC Details	48 AD-7 ADA Route/Grading Detail
8 G-8 Grading Plan	49 AD-8 ADA Route/Grading Detail
9 G-9 Grading Cross-Sections	
10 G-10 Grading Cross-Sections	50 SS-1 Sanitary Sewer Plan
11 G-11 Grading Cross-Sections	51 SS-2 Sanitary Sewer Plan
12 G-12 Retaining Wall A Plan	52 SS-3 SS Profiles
13 G-13 Retaining Wall A Plan	53 SS-4 SS Profiles
14 G-14 Retaining Wall B Plan	54 SS-5 SS Details

15 SD-1 Civil Composite	55 W-1 Water Plan
16 SD-2 27th Ave SE Plan & Profile	56 W-2 Water Plan
17 SD-3 Paving Storm Plan	57 W-3 Water Main Profiles
18 SD-4 Paving Storm Plan	58 W-4 FDC Line Profiles
19 SD-5 Storm Plan	59 W-5 Water Details
20 SD-6 Storm Plan	60 W-6 Water Details
21 SD-7 Storm Profiles	
22 SD-8 Storm Profiles	
23 SD-9 Roof/Yard Drain Profiles	
24 SD-10 Detention Gallery #1 Plan	
25 SD-11 Vault #2 Plan	
26 SD-12 Vault #2 Cross-Sections	
27 SD-13 Vault #3 Plan	
28 SD-14 Vault #3 Cross-Sections	
29 SD-15 Vault #4 Plan	
30 SD-16 Vault #4 Cross-Sections	
31 SD-17 Details	
32 SD-18 Storm Details	
33 SD-19 Storm Details	
34 SD-20 StormTank Details	
35 SD-21 StormTank Details	
36 SD-22 StormTank Details	
37 SD-23 Channelization Plan	
38 SD-24 Channelization Details	
39 SD-25 Street Light Plan	
40 SD-26 Street Light Details	
41 SD-27 Fire Lane Plan	

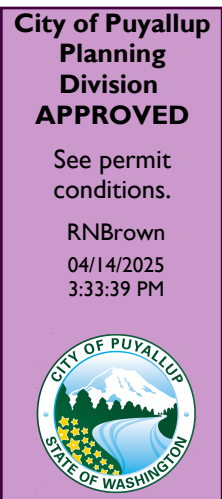
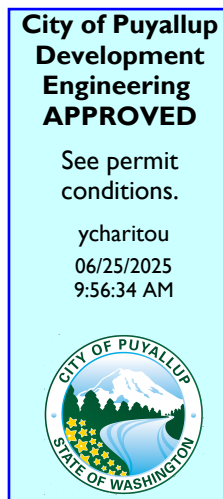
EX. CONTOUR	EX. HYDRANT
DESIGN CONTOUR	EX. STORM MANHOLE
LEGAL ROAD CENTERLINE	WATER VALVE
RIGHT-OF-WAY LINE	EX. POWER LINE
EX. PLAIN EDGE OF ASPHALT	EX. COMM. LINE
PROPOSED PLAIN EDGE OF ASPHALT	PROPOSED FIRE HYDRANT OR FDC
EX. DITCH	WATER METER
PROJECT BOUNDARY	BACKFLOW PREVENTER
LOT LINE	AIR/VAC ASSEMBLY
EX. CATCH BASIN	PIV
EX. STORM	NEW ASPHALT PAVING
PROPOSED CB-TYPE 1	NEW CONCRETE
PROPOSED CB-TYPE 2	
PROPOSED STORM	
WATER MAIN	
SANITARY SEWER	
SANITARY SEWER MANHOLE	
STANDARD MONUMENT	
POWER POLE	



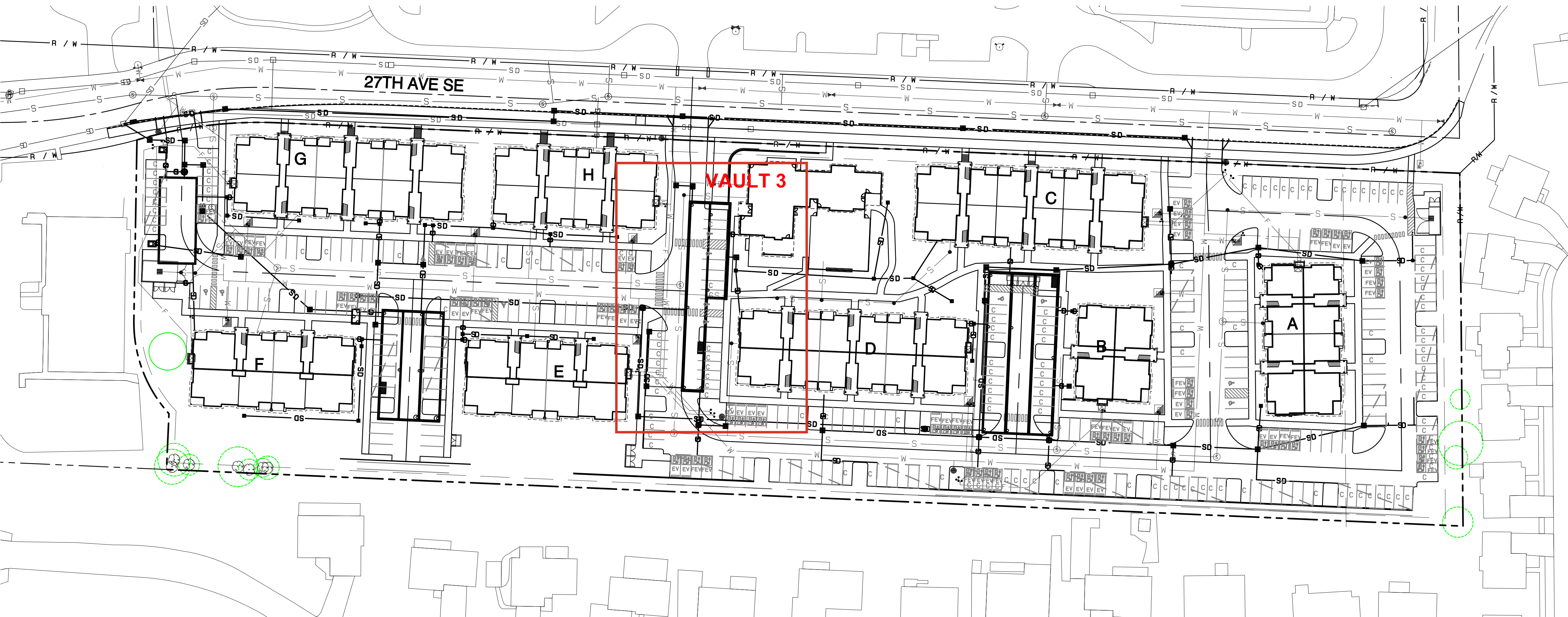
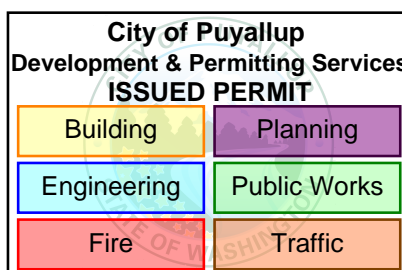
VICINITY MAP  
SCALE: 1"=100'

## LEGEND

EX. CONTOUR	EX. HYDRANT
DESIGN CONTOUR	EX. STORM MANHOLE
LEGAL ROAD CENTERLINE	WATER VALVE
RIGHT-OF-WAY LINE	EX. POWER LINE
EX. PLAIN EDGE OF ASPHALT	EX. COMM. LINE
PROPOSED PLAIN EDGE OF ASPHALT	PROPOSED FIRE HYDRANT OR FDC
EX. DITCH	WATER METER
PROJECT BOUNDARY	BACKFLOW PREVENTER
LOT LINE	AIR/VAC ASSEMBLY
EX. CATCH BASIN	PIV
EX. STORM	NEW ASPHALT PAVING
PROPOSED CB-TYPE 1	NEW CONCRETE
PROPOSED CB-TYPE 2	
PROPOSED STORM	
WATER MAIN	
SANITARY SEWER	
SANITARY SEWER MANHOLE	
STANDARD MONUMENT	
POWER POLE	



Refer to civil plan PRCCP20240845 for approved stormwater plans and methods of control.



APPROVED

BY: CITY OF PUYALLUP  
DEVELOPMENT SERVICES

DATE:

NOTE:

THIS APPROVAL IS VOID AFTER 180 DAYS FROM APPROVAL DATE.

THE CITY WILL NOT BE RESPONSIBLE FOR ERRORS AND/OR OMISSIONS ON THESE PLANS.

FIELD CONDITIONS MAY DICTATE CHANGES TO THESE PLANS AS DETERMINED BY THE ENGINEERING SERVICES MANAGER.

Cover Sheet

Bradley Heights

Timberlane Partners  
1816 11th Ave Unit C  
Seattle, WA 98122  
Phone 509.899.0326  
Fax jordan@timberlanepartners.com



feasibility \*planning \*engineering \*surveying

Project Desc.: Bradley Heights

DATE: May 14, 2024

DESIGNED BY: J. Jordan

DRAWN BY: J. Jordan

CHECKED BY: J. Jordan

APPROVED BY: J. Jordan

DATE: May 14, 2024

DESIGNED BY: J. Jordan

DRAWN BY: J. Jordan

CHECKED BY: J. Jordan

APPROVED BY: J. Jordan

DATE: May 14, 2024

DESIGNED BY: J. Jordan

DRAWN BY: J. Jordan

CHECKED BY: J. Jordan

APPROVED BY: J. Jordan

DATE: May 14, 2024

DESIGNED BY: J. Jordan

DRAWN BY: J. Jordan

CHECKED BY: J. Jordan

APPROVED BY: J. Jordan

DATE: May 14, 2024

DESIGNED BY: J. Jordan

DRAWN BY: J. Jordan

CHECKED BY: J. Jordan

APPROVED BY: J. Jordan

DATE: May 14, 2024

DESIGNED BY: J. Jordan

DRAWN BY: J. Jordan

CHECKED BY: J. Jordan

APPROVED BY: J. Jordan

DATE: May 14, 2024

DESIGNED BY: J. Jordan

DRAWN BY: J. Jordan

CHECKED BY: J. Jordan

APPROVED BY: J. Jordan

DATE: May 14, 2024

DESIGNED BY: J. Jordan

DRAWN BY: J. Jordan

CHECKED BY: J. Jordan

APPROVED BY: J. Jordan

DATE: May 14, 2024

DESIGNED BY: J. Jordan

DRAWN BY: J. Jordan

CHECKED BY: J. Jordan

APPROVED BY: J. Jordan

DATE: May 14, 2024

DESIGNED BY: J. Jordan

DRAWN BY: J. Jordan

CHECKED BY: J. Jordan

APPROVED BY: J. Jordan

DATE: May 14, 2024

DESIGNED BY: J. Jordan

DRAWN BY: J. Jordan

CHECKED BY: J. Jordan

APPROVED BY: J. Jordan

DATE: May 14, 2024

DESIGNED BY: J. Jordan

DRAWN BY: J. Jordan

CHECKED BY: J. Jordan

APPROVED BY: J. Jordan

DATE: May 14, 2024

DESIGNED BY: J. Jordan

DRAWN BY: J. Jordan

CHECKED BY: J. Jordan

APPROVED BY: J. Jordan

DATE: May 14, 2024

DESIGNED BY: J. Jordan

DRAWN BY: J. Jordan

CHECKED BY: J. Jordan

APPROVED BY: J. Jordan

DATE: May 14, 2024

DESIGNED BY: J. Jordan

DRAWN BY: J. Jordan

CHECKED BY: J. Jordan

APPROVED BY: J. Jordan

DATE: May 14, 2024

DESIGNED BY: J. Jordan

DRAWN BY: J. Jordan

CHECKED BY: J. Jordan

APPROVED BY: J. Jordan

DATE: May 14, 2024

DESIGNED BY: J. Jordan

DRAWN BY: J. Jordan

CHECKED BY: J. Jordan

APPROVED BY: J. Jordan

DATE: May 14, 2024

DESIGNED BY: J. Jordan

DRAWN BY: J. Jordan

CHECKED BY: J. Jordan

APPROVED BY: J. Jordan

DATE: May 14, 2024

DESIGNED BY: J. Jordan

DRAWN BY: J. Jordan

CHECKED BY: J. Jordan

APPROVED BY: J. Jordan

DATE: May 14, 2024

DESIGNED BY: J. Jordan

DRAWN BY: J. Jordan

CHECKED BY: J. Jordan

APPROVED BY: J. Jordan

DATE: May 14, 2024

DESIGNED BY: J. Jordan

DRAWN BY: J. Jordan

CHECKED BY: J. Jordan

APPROVED BY: J. Jordan

DATE: May 14, 2024

DESIGNED BY: J. Jordan

DRAWN BY: J. Jordan

CHECKED BY: J. Jordan

APPROVED BY: J. Jordan

DATE: May 14, 2024

DESIGNED BY: J. Jordan

DRAWN BY: J. Jordan

CHECKED BY: J. Jordan

APPROVED BY: J. Jordan

DATE: May 14, 2024

DESIGNED BY: J. Jordan

DRAWN BY: J. Jordan

CHECKED BY: J. Jordan

APPROVED BY: J. Jordan

DATE: May 14, 2024

DESIGNED BY: J. Jordan

DRAWN BY: J. Jordan

CHECKED BY: J. Jordan

APPROVED BY: J. Jordan

DATE: May 14, 2024

DESIGNED BY: J. Jordan

DRAWN BY: J. Jordan

CHECKED BY: J. Jordan

APPROVED BY: J. Jordan

DATE: May 14, 2024

DESIGNED BY: J. Jordan

DRAWN BY: J. Jordan

CHECKED BY: J. Jordan

APPROVED BY: J. Jordan

DATE: May 14, 2024

DESIGNED BY: J. Jordan

DRAWN BY: J. Jordan

CHECKED BY: J. Jordan

APPROVED BY: J. Jordan

DATE: May 14, 2024

DESIGNED BY: J. Jordan

DRAWN BY: J. Jordan

CHECKED BY: J. Jordan

APPROVED BY: J. Jordan

DATE: May 14, 2024

DESIGNED BY: J. Jordan

DRAWN BY: J. Jordan

CHECKED BY: J. Jordan

APPROVED BY: J. Jordan

DATE: May 14, 2024

DESIGNED BY: J. Jordan

DRAWN BY: J. Jordan

CHECKED BY: J. Jordan

APPROVED BY: J. Jordan

DATE: May 14, 2024

DESIGNED BY: J. Jordan

DRAWN BY: J. Jordan

CHECKED BY: J. Jordan

APPROVED BY: J. Jordan

DATE: May 14, 2024

DESIGNED BY: J. Jordan

DRAWN BY: J. Jordan

CHECKED BY: J. Jordan

APPROVED BY: J. Jordan

DATE: May 14, 2024

DESIGNED BY: J. Jordan

DRAWN BY: J. Jordan

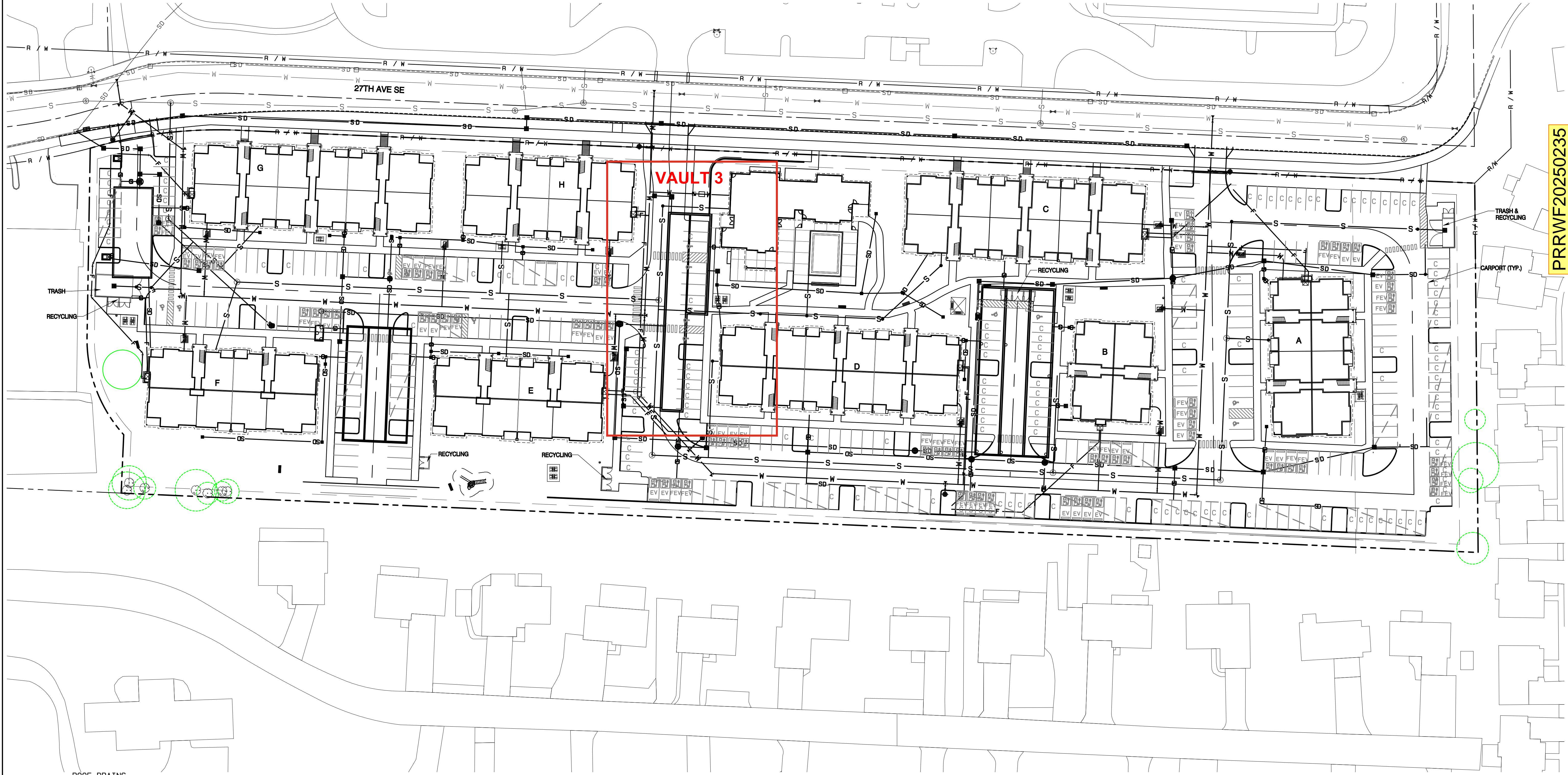
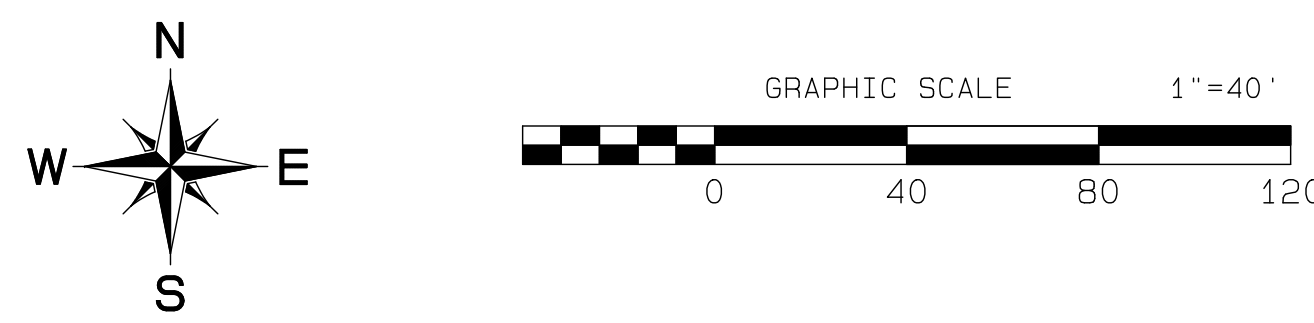
CHECKED BY: J. Jordan

APPROVED BY: J. Jordan

DATE: May 14, 2024

DESIGNED BY: J. Jordan

Bradley Heights  
Section 3, Township 19 N, Range 4 E, Willamette Meridian, Pierce County, Washington



ROOF DRAINS  
ALL BUILDINGS WILL HAVE PERIMETER ROOF DRAINS CONNECTED TO DOWNSPOUTS ROUTED TO THE ROOF DRAIN LEADERS SHOWN ON THIS PLAN. PERIMETER ROOF DRAINS SHALL BE MINIMUM 4" PVC SDR-35 WITH MIN. SLOPE OF 0.5% FOR UP TO TWO DOWNSPOUTS ON A SINGLE RUN. ONCE MORE THAN TWO DOWNSPOUTS ARE CONNECTED TO A RUN, DRAINS SHALL BE PER TABLE BELOW, UNLESS OTHERWISE DIRECTED/DESIGNED BY MEP.

BUILDING	MIN. SLOPE	MIN. SLOPE	MATERIAL
REC.	0.5%	0.5%	PVC SDR-35
A	0.5%	0.5%	PVC SDR-35
B	1.0%	0.5%	PVC SDR-35
C	0.5%	0.5%	PVC SDR-35
D	0.5%	0.5%	PVC SDR-35
E	0.5%	0.5%	PVC SDR-35
F	0.5%	0.5%	PVC SDR-35
G	0.5%	0.5%	PVC SDR-35
H	0.5%	0.5%	PVC SDR-35
I	0.5%	0.5%	PVC SDR-35
CARPORT	0.5%	0.5%	PVC SDR-35

DI IN DRIVING AREAS  
ELSE, PVC SDR-35

City of Puyallup  
Development & Permitting Services  
ISSUED PERMIT

Building	Planning
Engineering	Public Works
Fire	Traffic

APPROVED

BY: CITY OF PUYALLUP  
DEVELOPMENT SERVICES

DATE:

NOTE:  
THIS APPROVAL IS VOID AFTER 180 DAYS FROM APPROVAL DATE.  
THE CITY WILL NOT BE RESPONSIBLE FOR ERRORS AND/OR OMISSIONS ON THESE PLANS.  
FIELD CONDITIONS MAY DICTATE CHANGES TO THESE PLANS AS DETERMINED BY THE ENGINEERING SERVICES MANAGER.

PRRWF20250235

**Civil Composite**

**Bradley Heights**

Timberlane Partners  
1816 11th Ave Unit C  
Seattle, WA 98122  
Phone 509.886.0326  
Fax jordan@timberlanepartners.com

**Project Desc.:** Bradley Heights  
**Drawn By:** F. Johns/3227  
**Scale:** 1/8"=1'-0"

**REVISIONS**

NO.	DATE	DESCRIPTION
1	11/20/24	Revised per City Review and Mail A adjustment.
2	3/4/25	Revised per City Review.
3	4/21/25	Revised per City & Public Review.
4		Revised per City & Public Review.
5		Revised per City & Public Review.
6		Revised per City & Public Review.
7		Revised per City & Public Review.
8		Revised per City & Public Review.
9		Revised per City & Public Review.
10		Revised per City & Public Review.

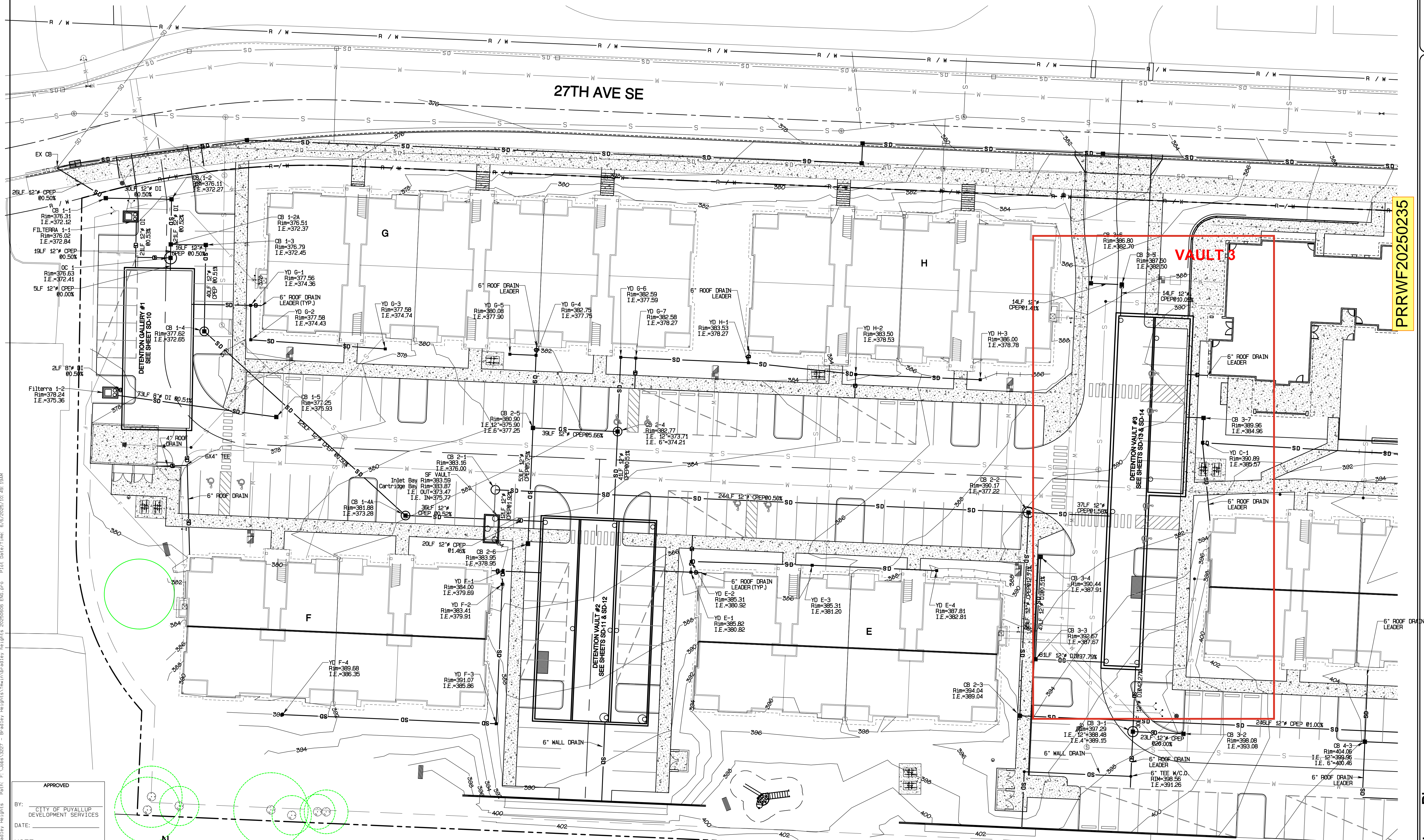
**Job No. 3227**  
**Date:** May 14, 2024  
**Designed By:** Rob Trivett  
**Drawn By:** Rob Trivett  
**Checked By:** Rob Trivett  
**Approved By:** Paul Green

**AZURE GREEN CONSULTANTS**  
+feasibility +planning +engineering +surveying  
409 East Pioneer, Suite A - Puyallup, WA 98372  
Phone 253.770.3144 Fax 253.770.3142

**Professional Engineer**  
ROBERT A. TRIVETT  
P.E.  
43715  
PROFESSIONAL

**DRAWING**  
**SD-1**  
SHEET 15  
OF 60

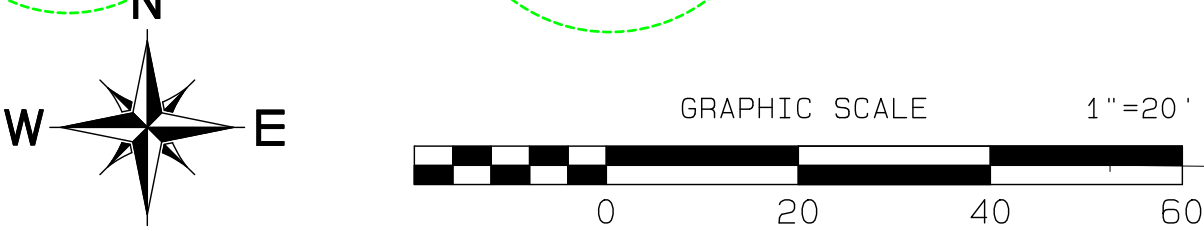
Bradley Heights  
Section 3, Township 19 N, Range 4 E, Willamette Meridian, Pierce County, Washington



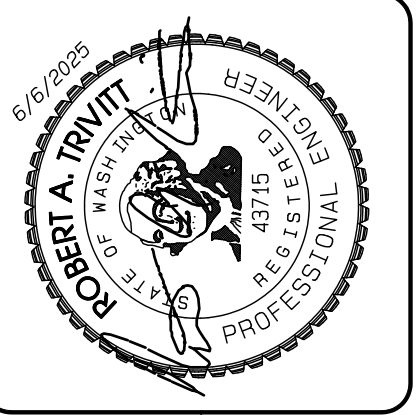
PRRWF20250235

Project Desc.: Bradley Heights  
Date: 5/16/2025  
Drawn By: F. Woods/3227  
Checked By: F. Woods/3227  
Title: Stormwater Management Plan  
Scale: 1"=20'

APPROVED  
BY: CITY OF PUYALLUP  
DEVELOPMENT SERVICES  
DATE: 5/16/2025  
NOTE:  
THIS APPROVAL IS VOID AFTER 180  
DAYS FROM APPROVAL DATE.  
THE CITY WILL NOT BE RESPONSIBLE  
FOR ERRORS AND/OR OMISSIONS  
ON THESE PLANS.  
FIELD CONDITIONS MAY DICTATE  
CHANGES TO THESE PLANS AS  
DETERMINED BY THE ENGINEERING  
SERVICES MANAGER.



City of Puyallup Development & Permitting Services ISSUED PERMIT			
Building	Planning	Public Works	Traffic
Engineering	Fire		



REVISION	DATE
1. Revised per City Review and Mail A Adjustment.	11/29/24
2. Revised per City Review.	3/4/25
3. Revised per City Review.	5/16/25
4. WSP DESIGN, CLARIFIED COMMENTS. SHEET 6-12, -13, -14, 9-3, 4, -11, -12, -23, 6-40-2 ONLY.	6/6/25
5.	
6.	
7.	
8.	
9.	
10.	

JOB NO. 3227
DATE: May 14, 2024
DESIGNED BY: Rob Trivitt
DRAWN BY: Rob Trivitt
CHECKED BY: Rob Trivitt
APPROVED BY: Rob Trivitt

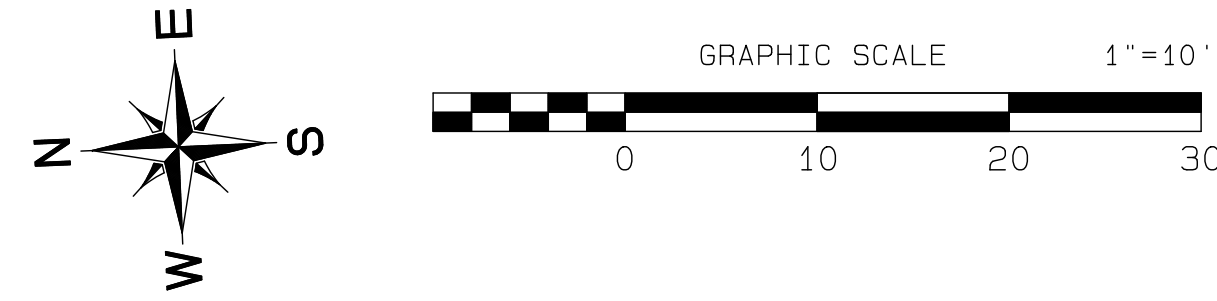
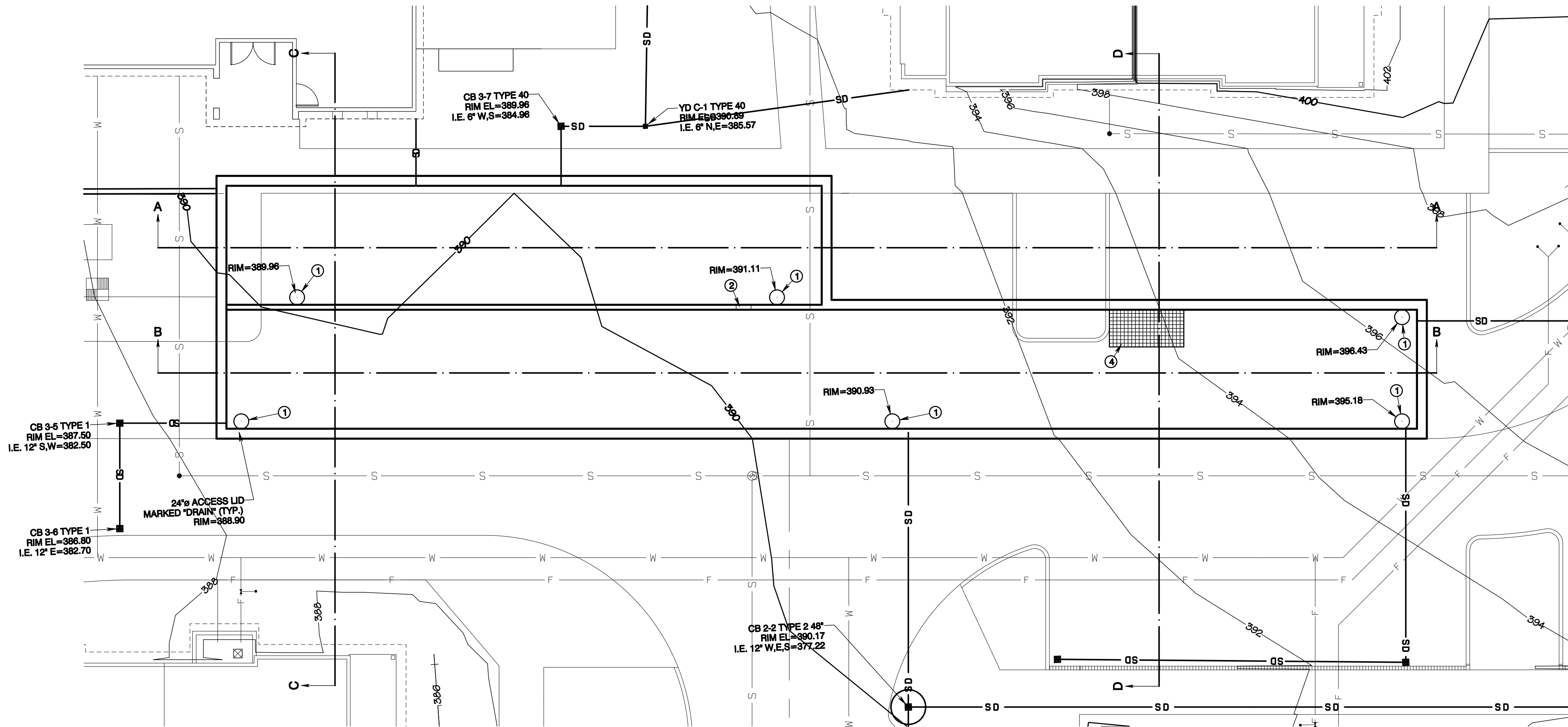
**Azure Green**  
CONSULTANTS  
+ feasibility + planning + engineering + surveying  
409 East Pioneer, Suite A - Puyallup, WA 98372  
Phone: 253.770.3144 Fax: 253.770.3142

**Storm Plan**  
Bradley Heights  
Timberlane Partners  
1816 11th Ave Unit C  
Seattle, WA 98122  
Phone: 206.886.0326  
Fax: jordan@timberlanepartners.com

Project Desc.: Bradley Heights  
Drawn By: F. Lohr 3/27 - Bradley Heights  
Date: 4/25/2025 7:38:34 AM  
Title: Date/Time: 4/25/2025 7:38:34 AM

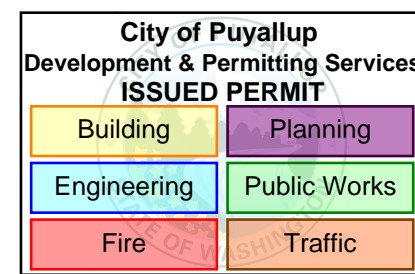
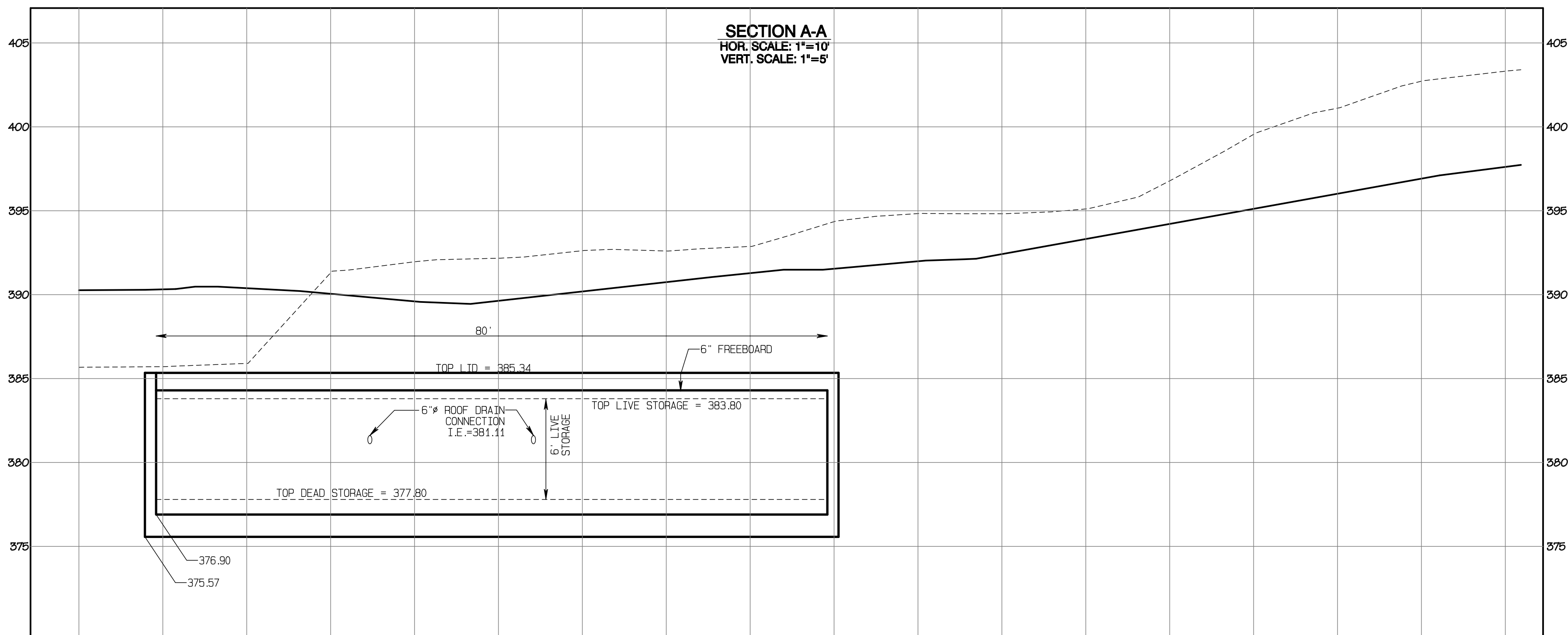
# Bradley Heights

Section 3, Township 19 N, Range 4 E, Willamette Meridian, Pierce County, Washington



## CONSTRUCTION KEY NOTES

- 24\"/>
- 24\"/>
- 5'x10' GRATED OPENING, TRAFFIC RATED  
W/LADDER PER STD. 06.01.04, SHEET SD-22  
& W/ BILCO LADDER-UP  
& W/ OSHA CONFINED ENTRY WARNING SIGN



APPROVED

BY: CITY OF PUYALLUP  
DEVELOPMENT SERVICES

DATE:

NOTE:

THIS APPROVAL IS VOID AFTER 180 DAYS FROM APPROVAL DATE.

THE CITY WILL NOT BE RESPONSIBLE FOR ERRORS AND/OR OMISSIONS ON THESE PLANS.

FIELD CONDITIONS MAY DICTATE CHANGES TO THESE PLANS AS DETERMINED BY THE ENGINEERING SERVICES MANAGER.

PRRWF20250235

Vault #3 Plan

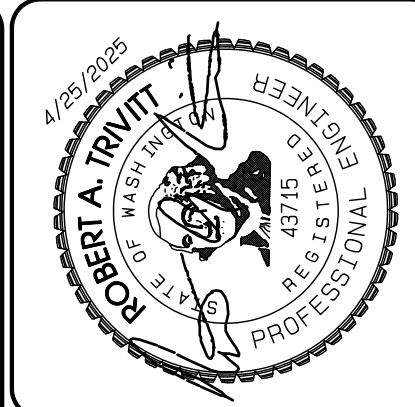
Bradley Heights



409 East Pioneer, Suite A - Puyallup, WA 98372  
phone 253.770.3144 fax 253.770.3142

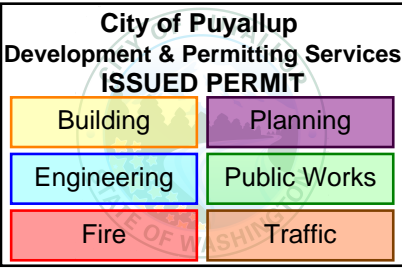
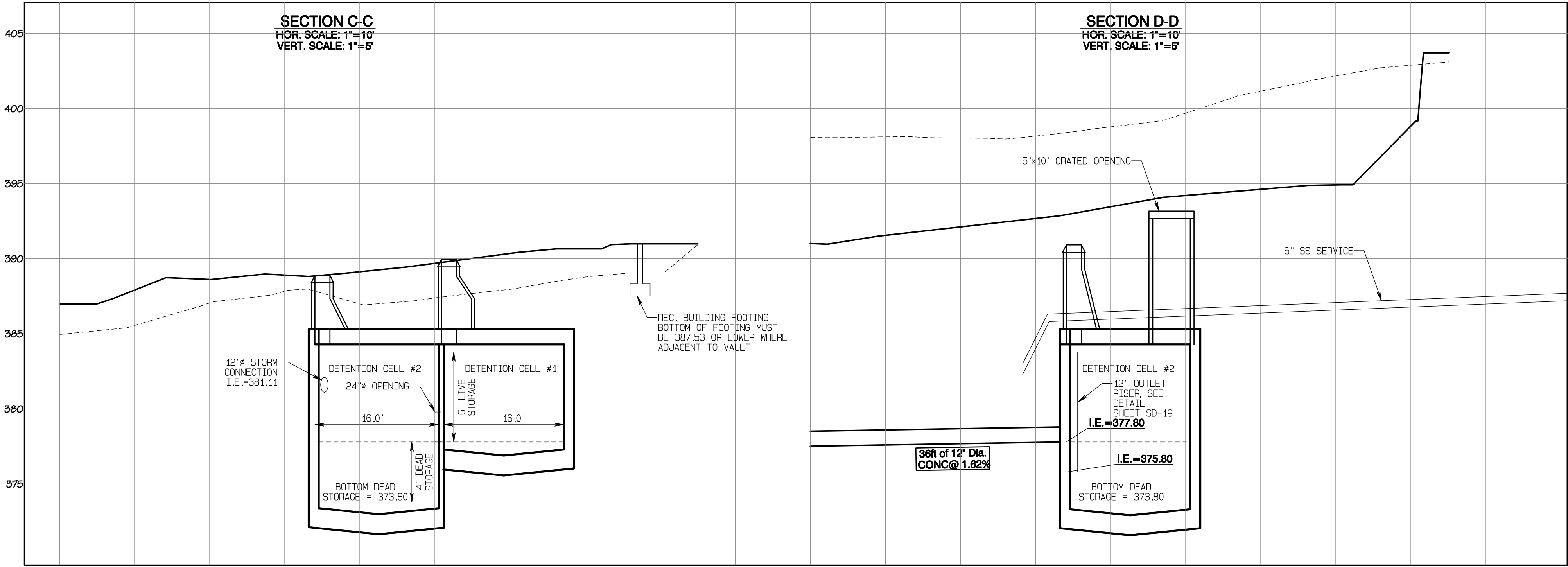
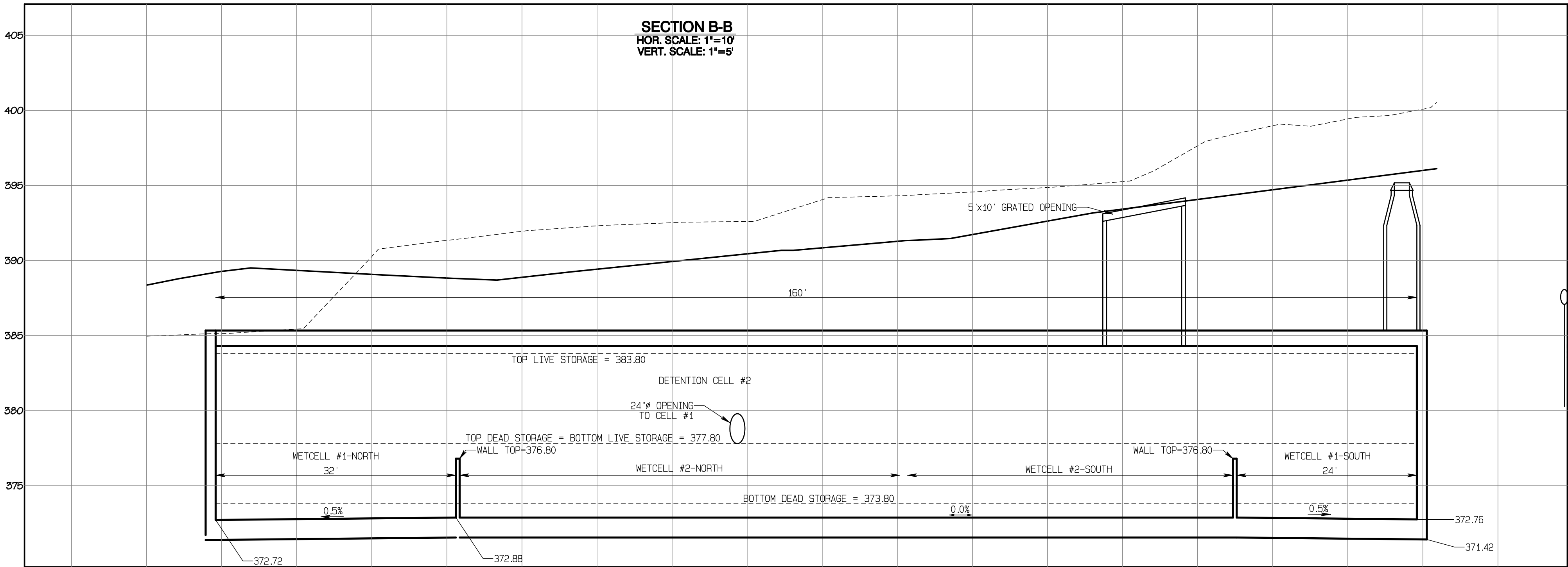
Timberlane Partners  
1816 11th Ave Unit C  
Seattle, WA 98122  
Phone 509.886.0326  
Fax jordan@timberlanepartners.com

DRAWING  
**SD-13**  
SHEET 27  
OF 60



REVISION	DATE
1 Revised per City Review and Mail A adjustment.	11/29/24
2 Revised per City Review.	3/4/25
3 Revised per City & Rush Review.	4/27/25
4 Revised per City & Rush Review.	
5	
6	
7	
8	
9	
10	

Bradley Heights  
Section 3, Township 19 N, Range 4 E, Willamette Meridian, Pierce County, Washington



APPROVED

BY: CITY OF PUYALLUP  
DEVELOPMENT SERVICES

DATE:

NOTE:

THIS APPROVAL IS VOID AFTER 180 DAYS FROM APPROVAL DATE.

THE CITY WILL NOT BE RESPONSIBLE FOR ERRORS AND/OR OMISSIONS ON THESE PLANS.

FIELD CONDITIONS MAY DICTATE CHANGES TO THESE PLANS AS DETERMINED BY THE ENGINEERING SERVICES MANAGER.

PRRWF20250235

Vault #3 Cross-Sections

Bradley Heights

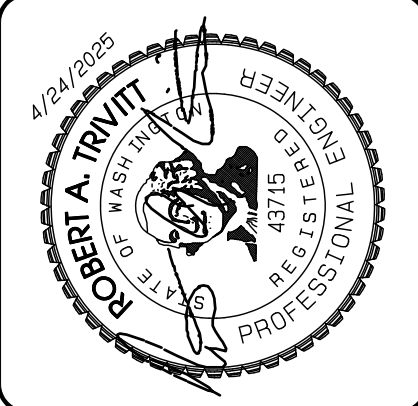
Timberlane Partners  
1816 11th Ave Unit C  
Seattle, WA 98122  
Phone 509.889.0326  
Fax jordan@timberlanepartners.com

DRAWING  
SD-14  
SHEET 28  
OF 60



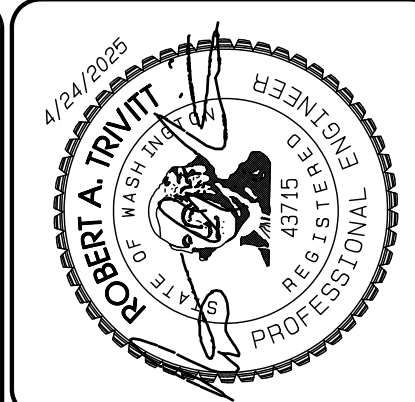
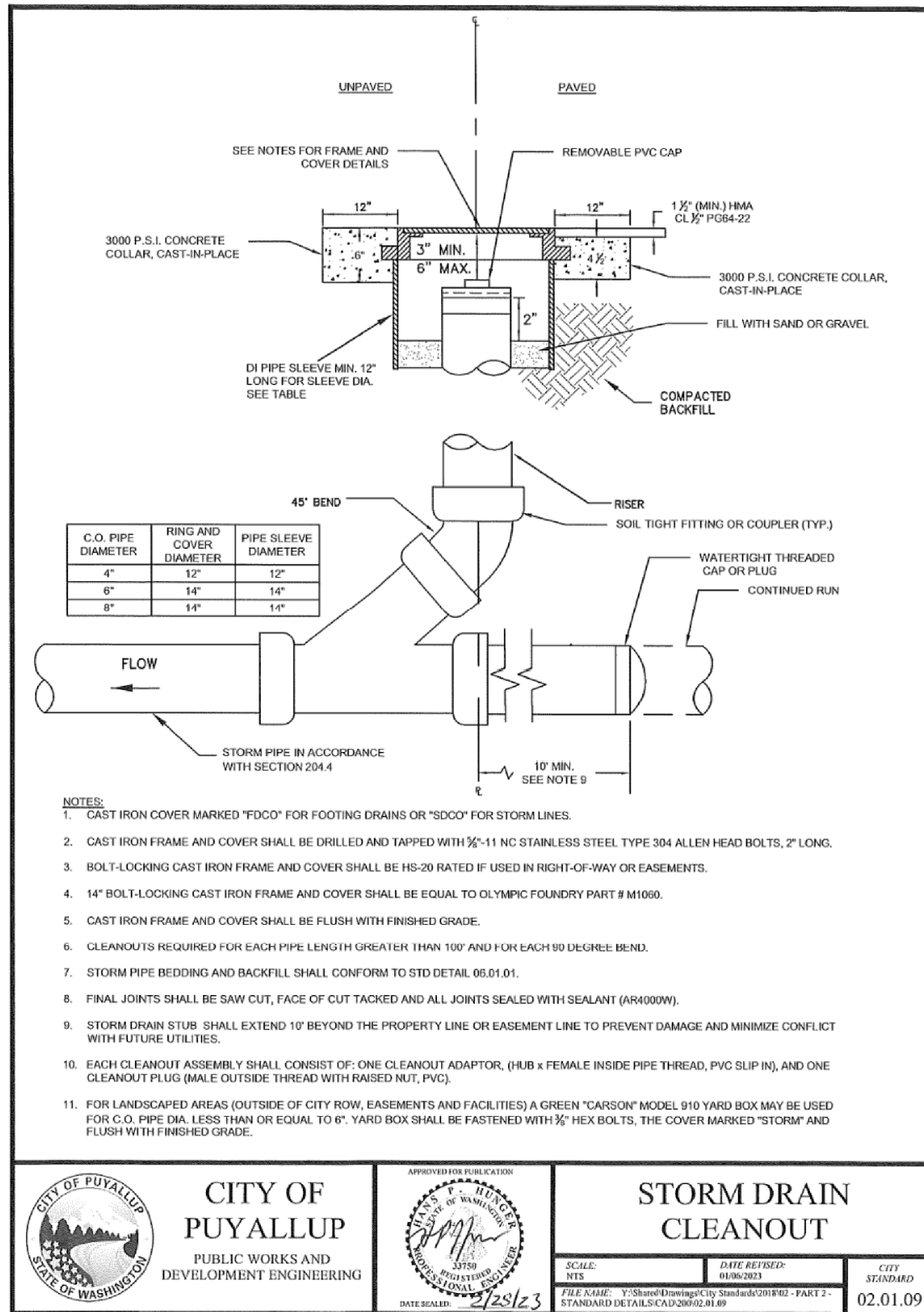
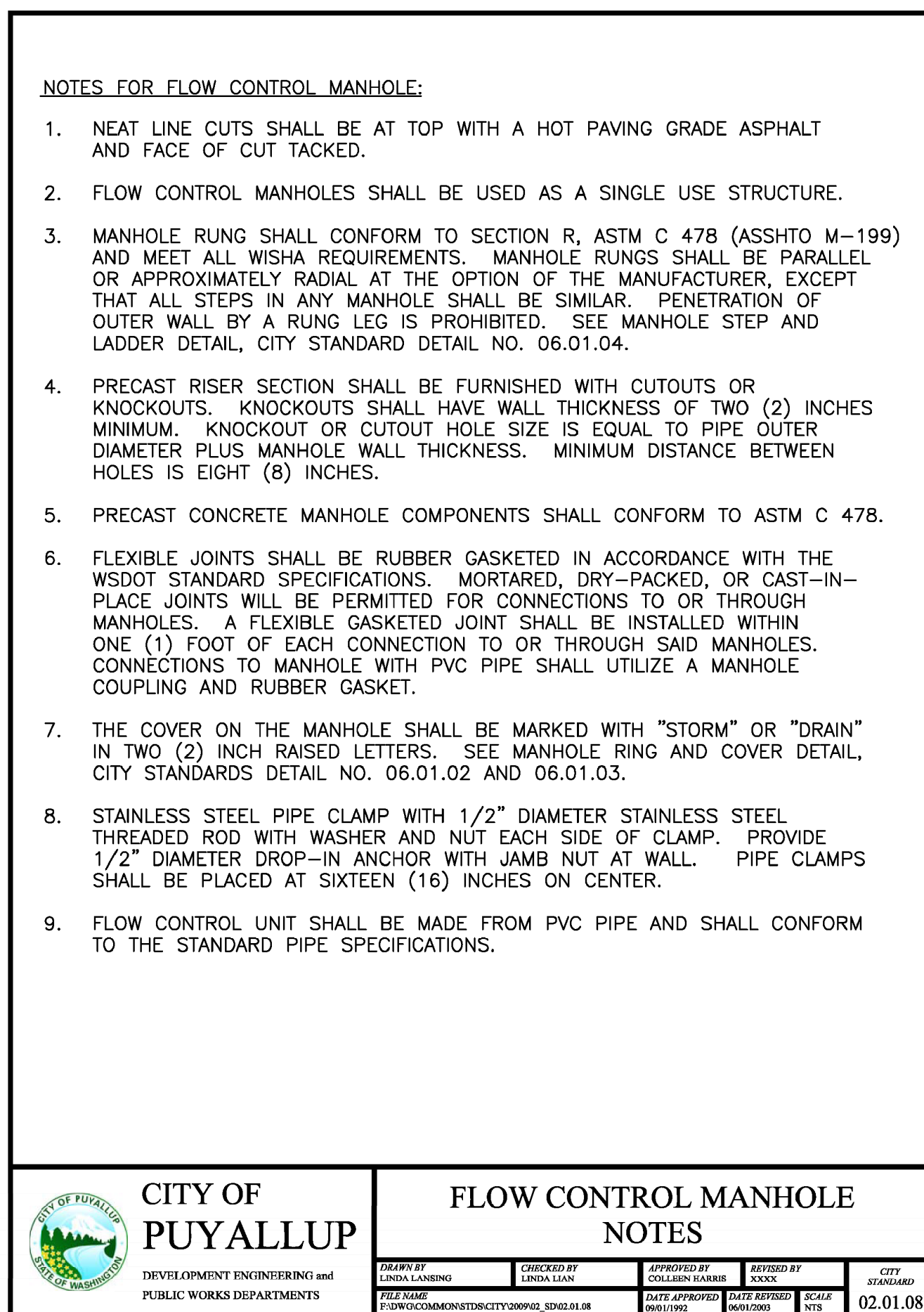
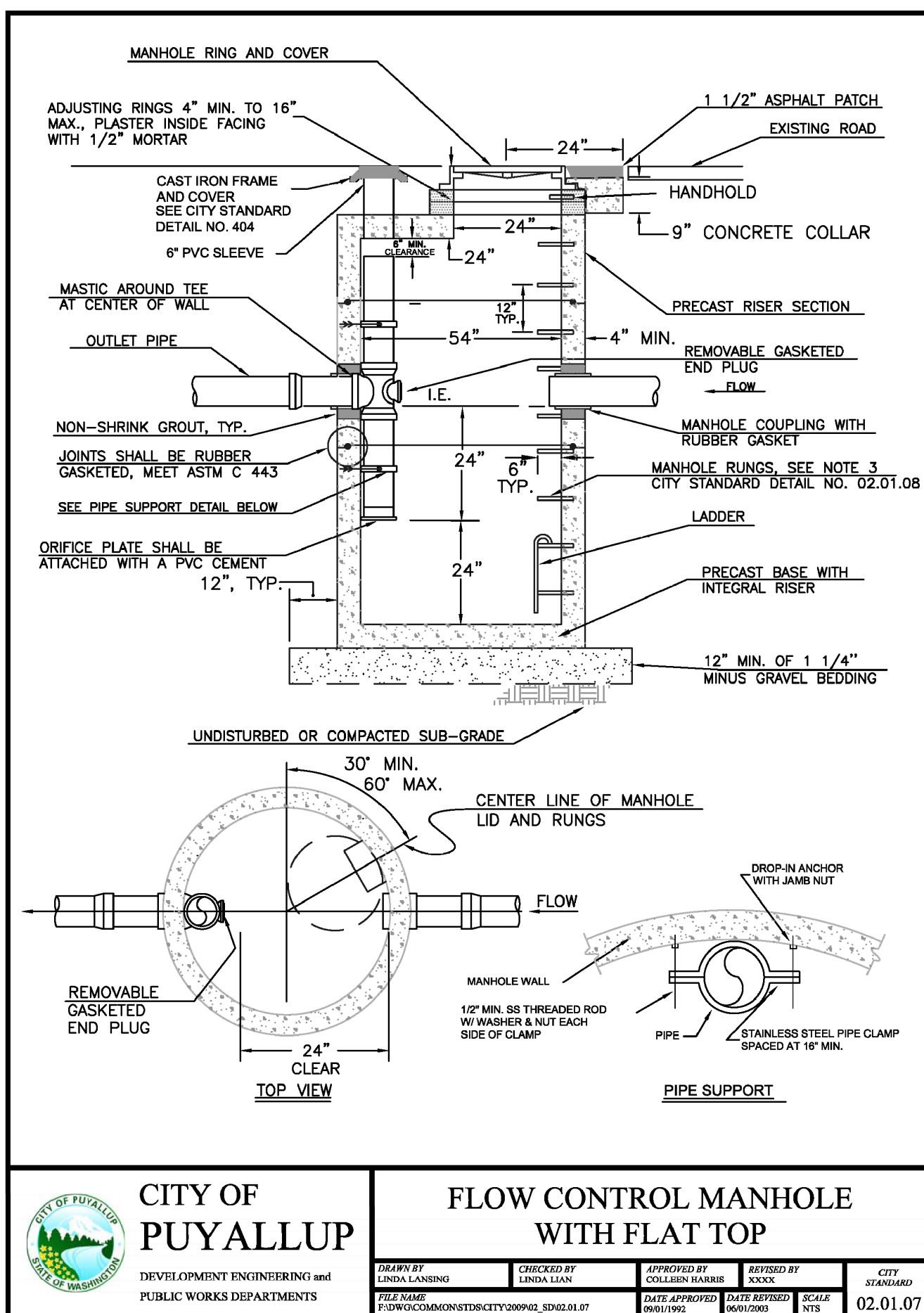
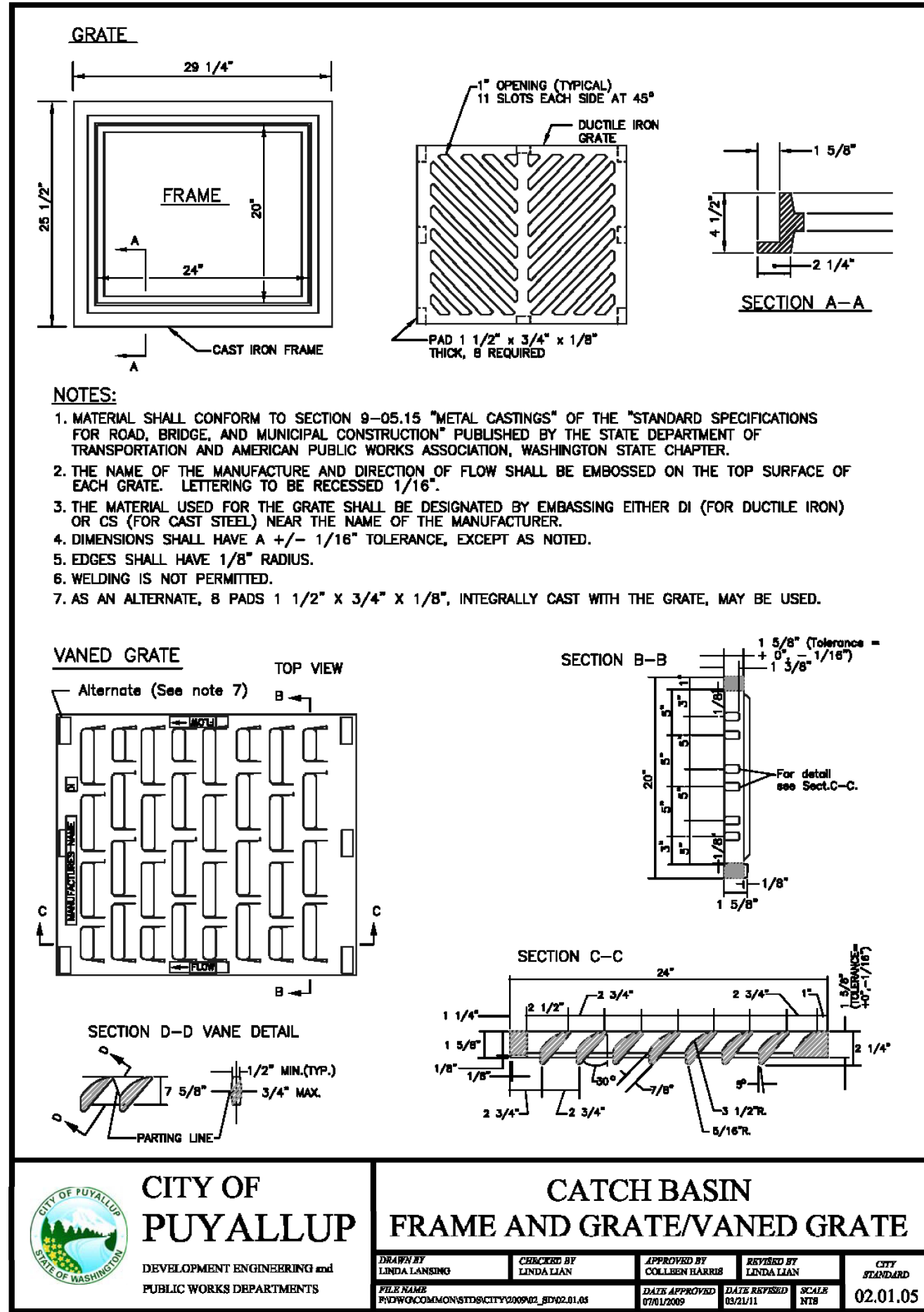
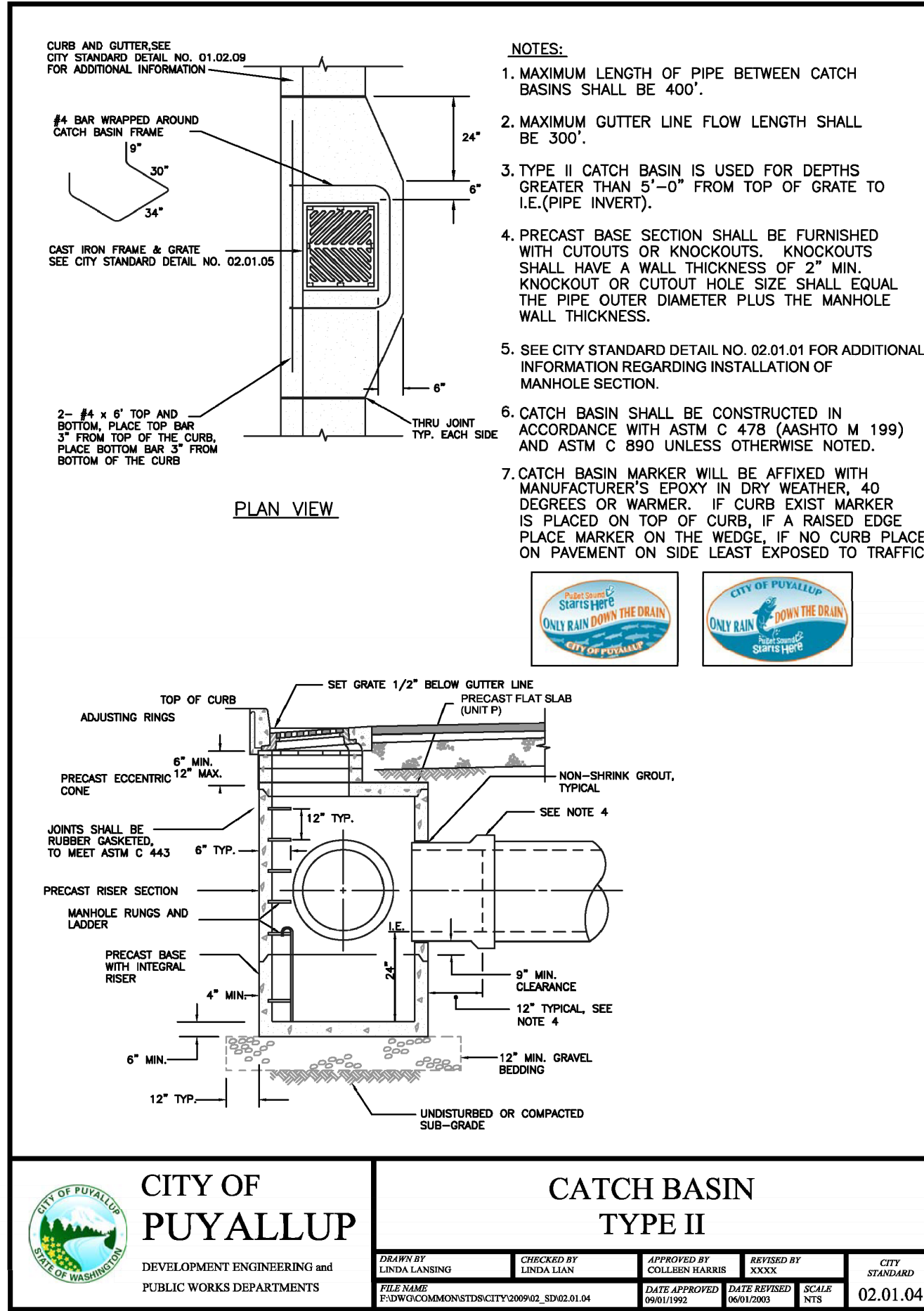
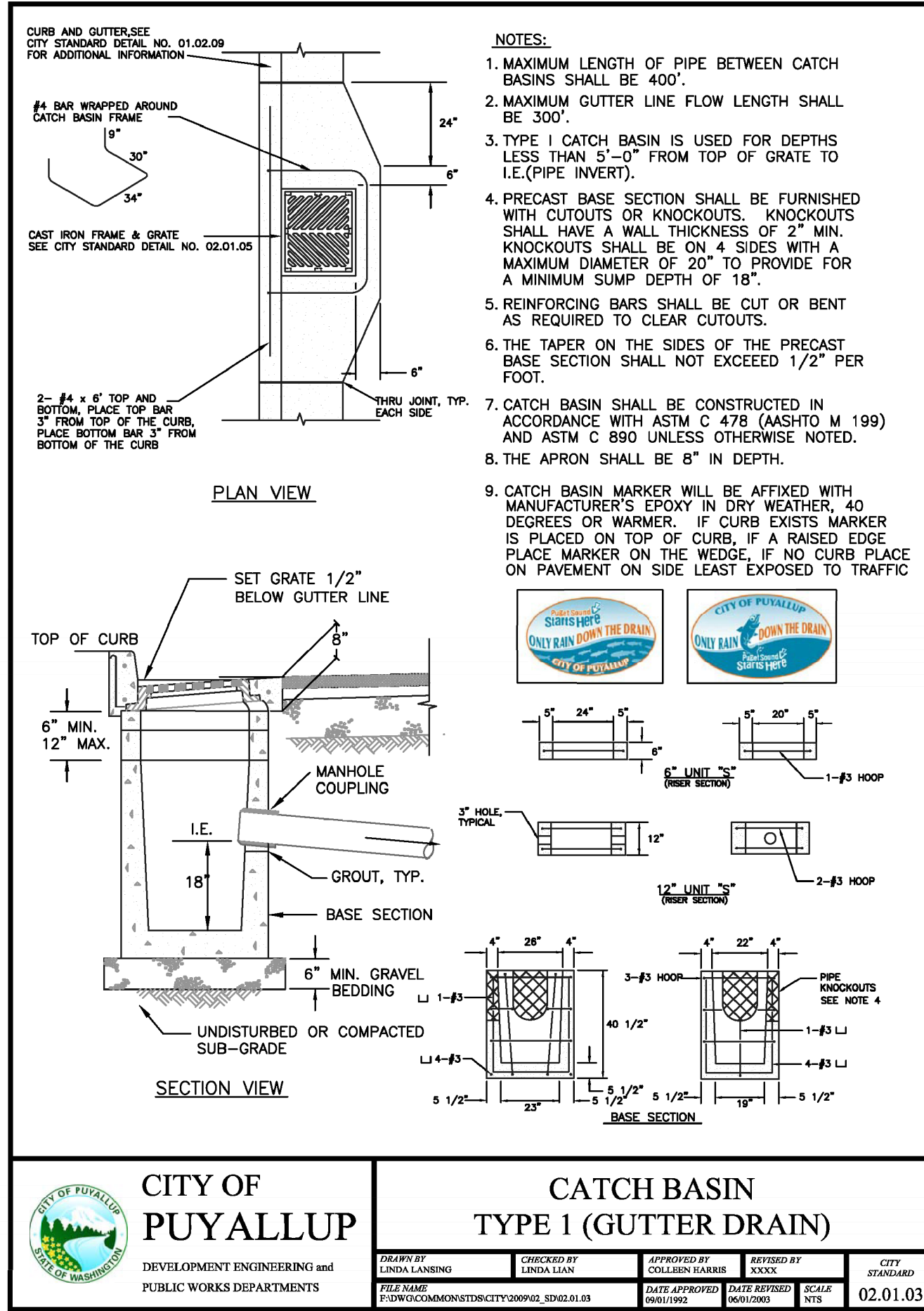
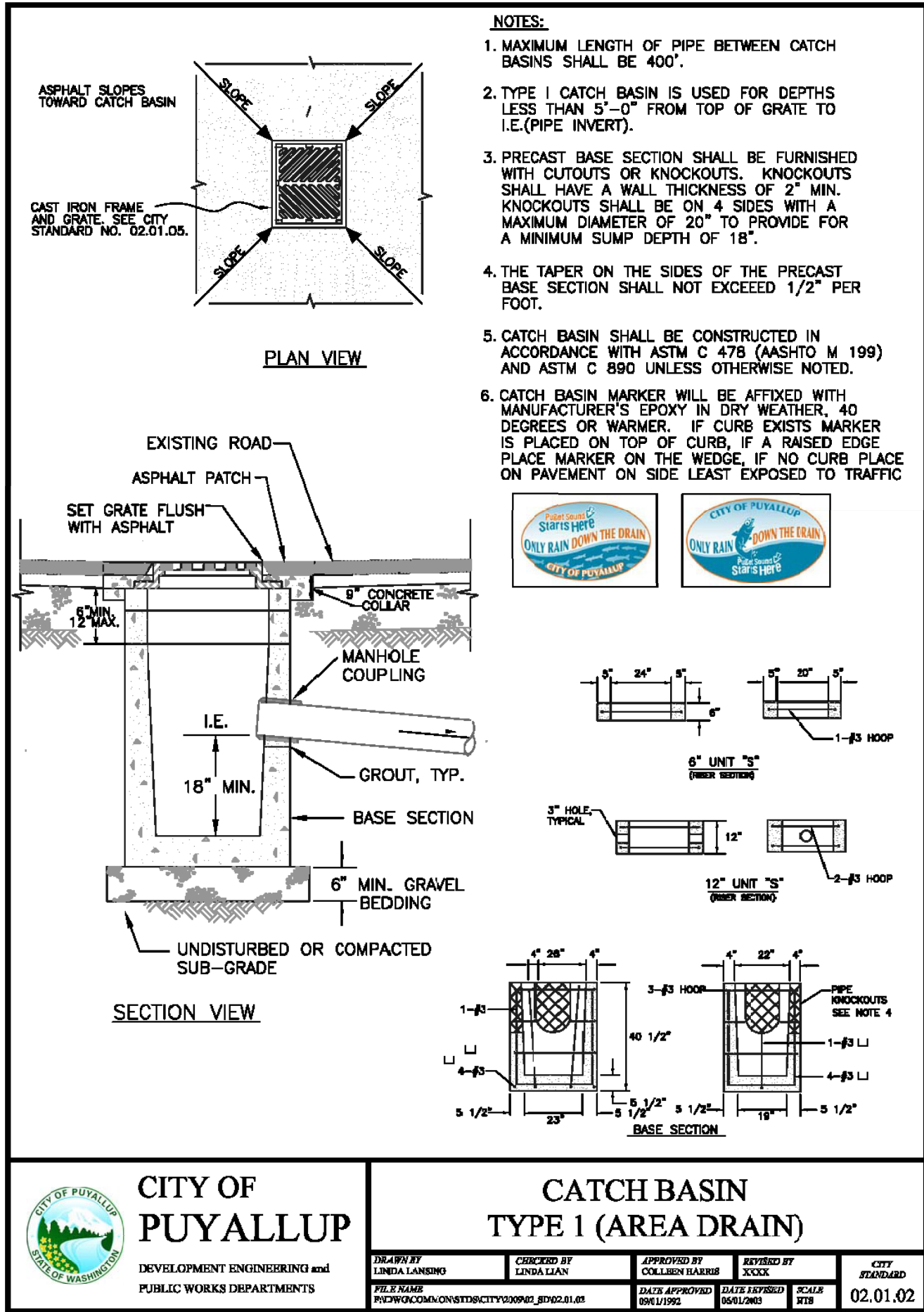
JOB NO. 3827  
DATE: May 14, 2024  
DESIGNED BY: Rob Trivitt  
DRAWN BY: Rob Trivitt  
CHECKED BY: Paul Green  
APPROVED BY: Paul Green

REVISION	DATE
1 Revised per City review and Mail A adjustment.	11/26/24
2 Revised per City review.	3/4/25
3 Revised per City & Paul review.	4/27/25
4	
5	
6	
7	
8	
9	
10	



# Bradley Heights

## Section 3, Township 19 N, Range 4 E, Willamette Meridian, Pierce County, Washington



REVISION	DATE	BY	FOR
1	11/26/24	REVIEWED BY: COLLIER HARRIS	FOR CITY REVIEW
2	3/4/25	DESIGNED BY: LINDA LANSING	FOR CITY REVIEW
3	4/21/25	DESIGNED BY: LINDA LANSING	FOR CITY REVIEW
4	4/21/25	DESIGNED BY: LINDA LANSING	FOR CITY REVIEW
5	4/21/25	DESIGNED BY: LINDA LANSING	FOR CITY REVIEW
6	4/21/25	DESIGNED BY: LINDA LANSING	FOR CITY REVIEW
7	4/21/25	DESIGNED BY: LINDA LANSING	FOR CITY REVIEW
8	4/21/25	DESIGNED BY: LINDA LANSING	FOR CITY REVIEW
9	4/21/25	DESIGNED BY: LINDA LANSING	FOR CITY REVIEW
10	4/21/25	DESIGNED BY: LINDA LANSING	FOR CITY REVIEW

PRRWF20250235

DATE	BY	FOR
May 14, 2024	DESIGNED BY: LINDA LANSING	FOR CITY REVIEW
May 14, 2024	DESIGNED BY: LINDA LANSING	FOR CITY REVIEW
May 14, 2024	DESIGNED BY: LINDA LANSING	FOR CITY REVIEW
May 14, 2024	DESIGNED BY: LINDA LANSING	FOR CITY REVIEW
May 14, 2024	DESIGNED BY: LINDA LANSING	FOR CITY REVIEW
May 14, 2024	DESIGNED BY: LINDA LANSING	FOR CITY REVIEW
May 14, 2024	DESIGNED BY: LINDA LANSING	FOR CITY REVIEW
May 14, 2024	DESIGNED BY: LINDA LANSING	FOR CITY REVIEW
May 14, 2024	DESIGNED BY: LINDA LANSING	FOR CITY REVIEW
May 14, 2024	DESIGNED BY: LINDA LANSING	FOR CITY REVIEW

**AZURE GREEN CONSULTANTS**

409 East Pioneer, Suite A - Puyallup, WA 98372

phone: 253.770.3144 fax: 253.770.3142

DESIGNED BY: LINDA LANSING

CHECKED BY: LINDA LANSING

APPROVED BY: COLLIER HARRIS

DATE APPROVED: 02/01/09

SCALE: 1"=1'-0"

CITY STANDARD: 02.01.05

**Storm Details**

**Bradley Heights**

Timberlane Partners  
1816 11th Ave Unit C  
Seattle, WA 98122  
Phone 509.896.0326  
Fax jordan@timberlanepartners.com

**DRAWING**

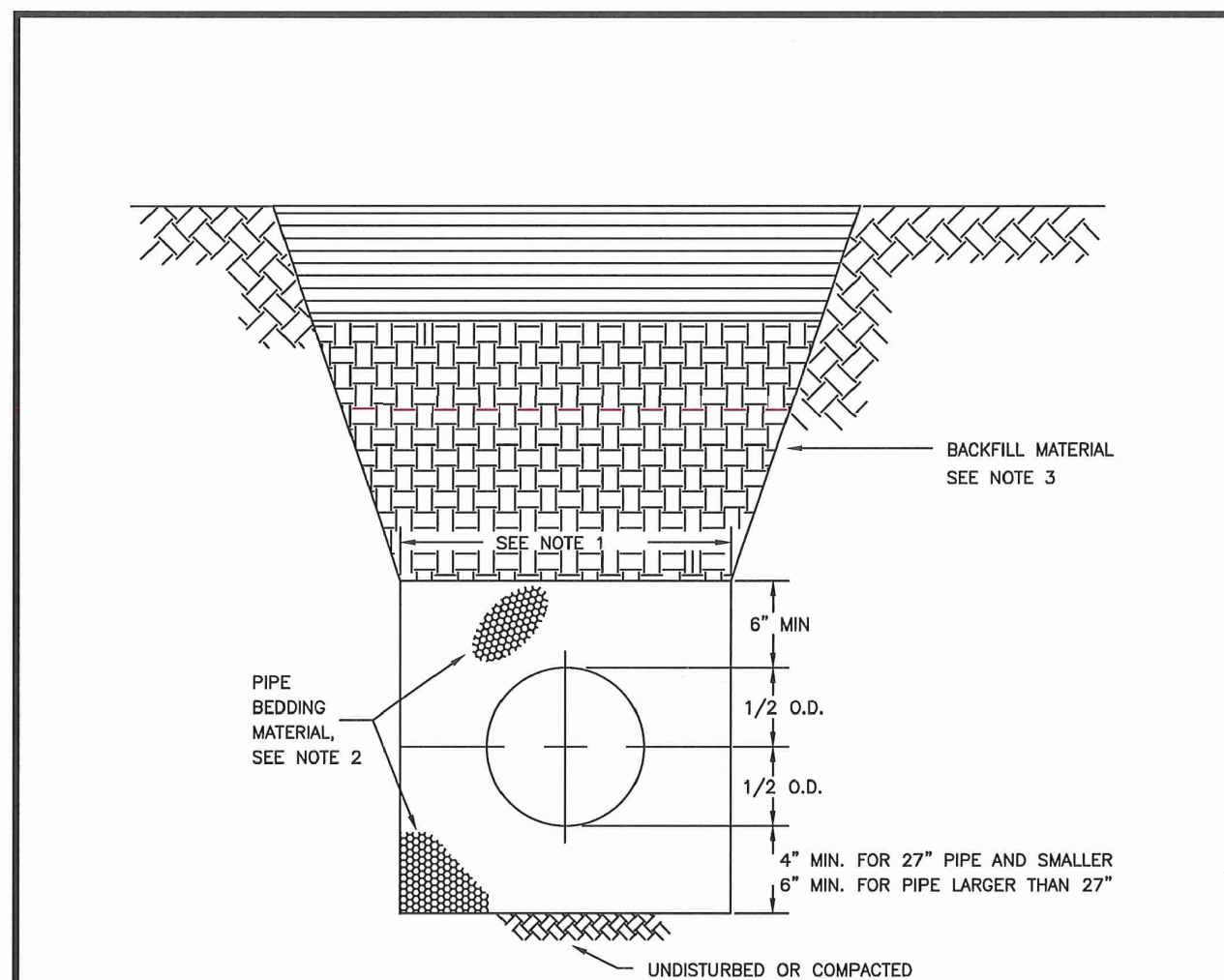
**SD-18**

**SHEET** 32

**OF** 60

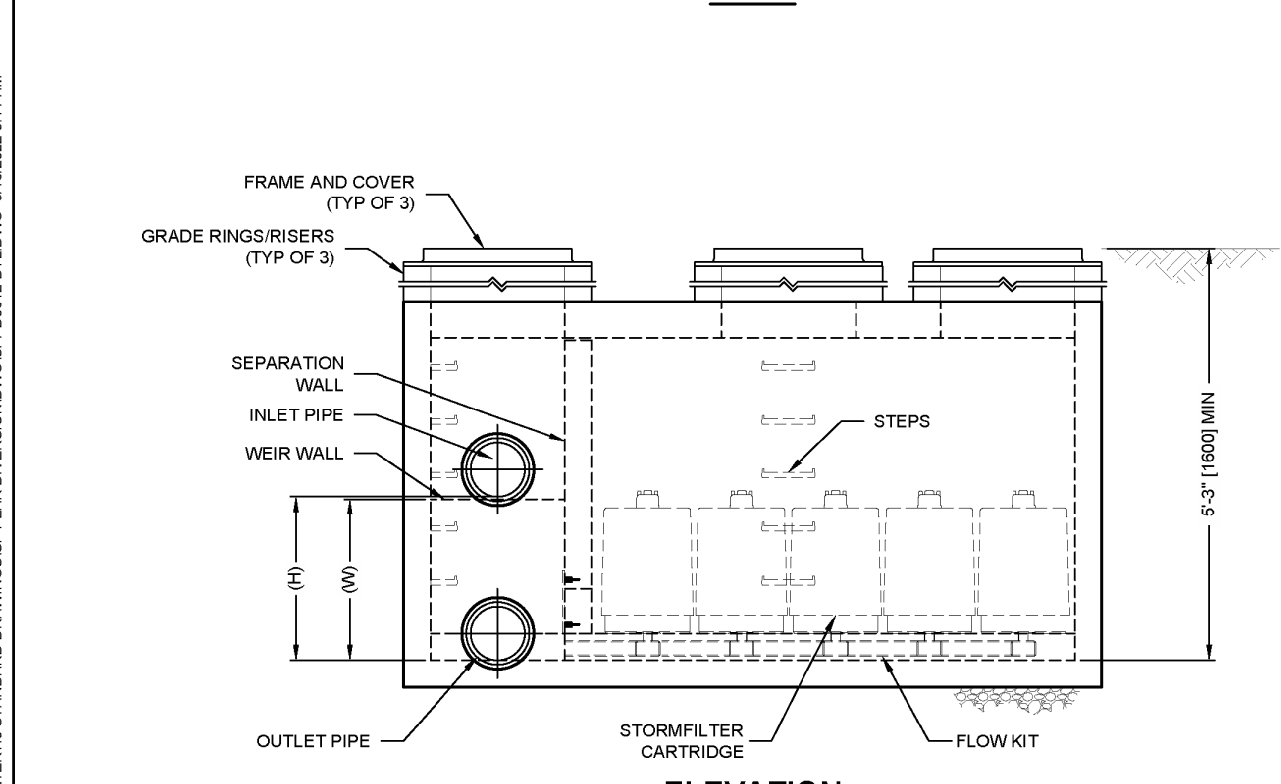
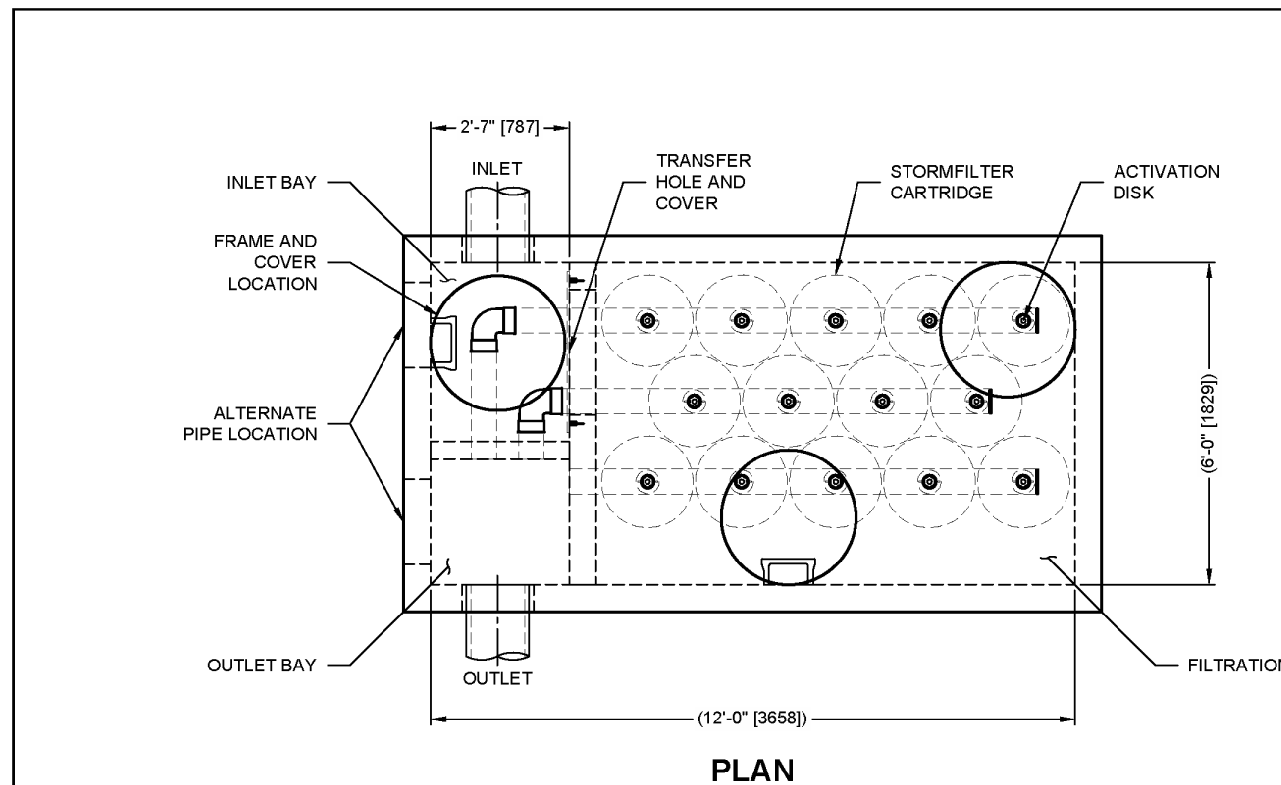
# Bradley Heights

## Section 3, Township 19 N, Range 4 E, Willamette Meridian, Pierce County, Washington



- TRENCHING SHALL MEET THE REQUIREMENTS OF SECTION 7-08.3(1) AND 2-06.3(1) OF THE WSDOT SPECIFICATIONS.
- BEDDING MATERIAL SHALL CONFORM TO 9-03.12(3) GRAVEL BACKFILL FOR PIPE ZONE BEDDING.
- GRAVEL BACKFILL SHALL CONFORM TO 9-03.12(1) GRAVEL BACKFILL FOR FOUNDATIONS, CLASS A.

	<b>CITY OF PUYALLUP</b> OFFICE OF THE CITY ENGINEER	<b>PIPE TRENCHING BEDDING AND BACKFILL</b>
DESIGNED BY: JEFFREY OVERMAN	CHECKED BY: TROY HILL	APPROVED BY: MARK PALMER
DATE: 06/01/01	DATE: 06/01/01	DATE: 06/01/01
PROJECT NO: 06.01.01	PROJECT NO: 06.01.01	PROJECT NO: 06.01.01



**STORMFILTER DESIGN NOTES**

- STORMFILTER TREATMENT CAPACITY Varies by CARTRIDGE COUNT and LOCALLY APPROVED SURFACE AREA SPECIFIC FLOW RATE. PEAK CONVEYANCE CAPACITY TO BE DETERMINED BY ENGINEER OF RECORD.
- A LEFT INLET (AS SHOWN) OR A RIGHT INLET CONFIGURATION.
- ALL PARTS AND INTERNAL ASSEMBLY PROVIDED BY CONTECH UNLESS NOTED OTHERWISE.
- CARTRIDGE SIZE (in. [mm])
- RECOMMENDED HYDRAULIC DROP (ft) (m)
- HEIGHT OF WEIR WALL (in. [mm])
- SPECIFIC FLOW RATE (gpm/sq ft) (L/m<sup>2</sup>/min)
- CARTRIDGE FLOW RATE (gpm) (L/min)
- CARTRIDGE FLOW RATE (gpm) (L/min)

\* 1.67 gpm/sq ft (1.13 L/m<sup>2</sup>/min) SPECIFIC FLOW RATE IS APPROVED WITH PHOSPHORUS (PSORB) MEDIA ONLY.

### STORMFILTER DESIGN NOTES

- STORMFILTER TREATMENT CAPACITY Varies by CARTRIDGE COUNT and LOCALLY APPROVED SURFACE AREA SPECIFIC FLOW RATE. PEAK CONVEYANCE CAPACITY TO BE DETERMINED BY ENGINEER OF RECORD.
- A LEFT INLET (AS SHOWN) OR A RIGHT INLET CONFIGURATION.
- ALL PARTS AND INTERNAL ASSEMBLY PROVIDED BY CONTECH UNLESS NOTED OTHERWISE.
- CARTRIDGE SIZE (in. [mm])
- RECOMMENDED HYDRAULIC DROP (ft) (m)
- HEIGHT OF WEIR WALL (in. [mm])
- SPECIFIC FLOW RATE (gpm/sq ft) (L/m<sup>2</sup>/min)
- CARTRIDGE FLOW RATE (gpm) (L/min)
- CARTRIDGE FLOW RATE (gpm) (L/min)

\* 1.67 gpm/sq ft (1.13 L/m<sup>2</sup>/min) SPECIFIC FLOW RATE IS APPROVED WITH PHOSPHORUS (PSORB) MEDIA ONLY.

### SITE SPECIFIC DATA REQUIREMENTS

STRUCTURE ID	0.2872
WATER QUALITY FLOW RATE (cfs) (L/s)	1.5844
PEAK FLOW RATE (cfs) (L/s)	1.5844
RETURN PERIOD OF PEAK FLOW (yr)	100
CARTRIDGE FLOW RATE	12.53
CARTRIDGE SIZE (27, 18, LOW DROP (L/D))	18
MEDIA TYPE (PERLITE, ZPG, PSORB)	PSORB
NUMBER OF CARTRIDGES REQUIRED	11
INLET BAY RIM ELEVATION	383.59
FILTER BAY RIM ELEVATION	383.87

NOTES/SPECIAL REQUIREMENTS

### FRAME AND COVER

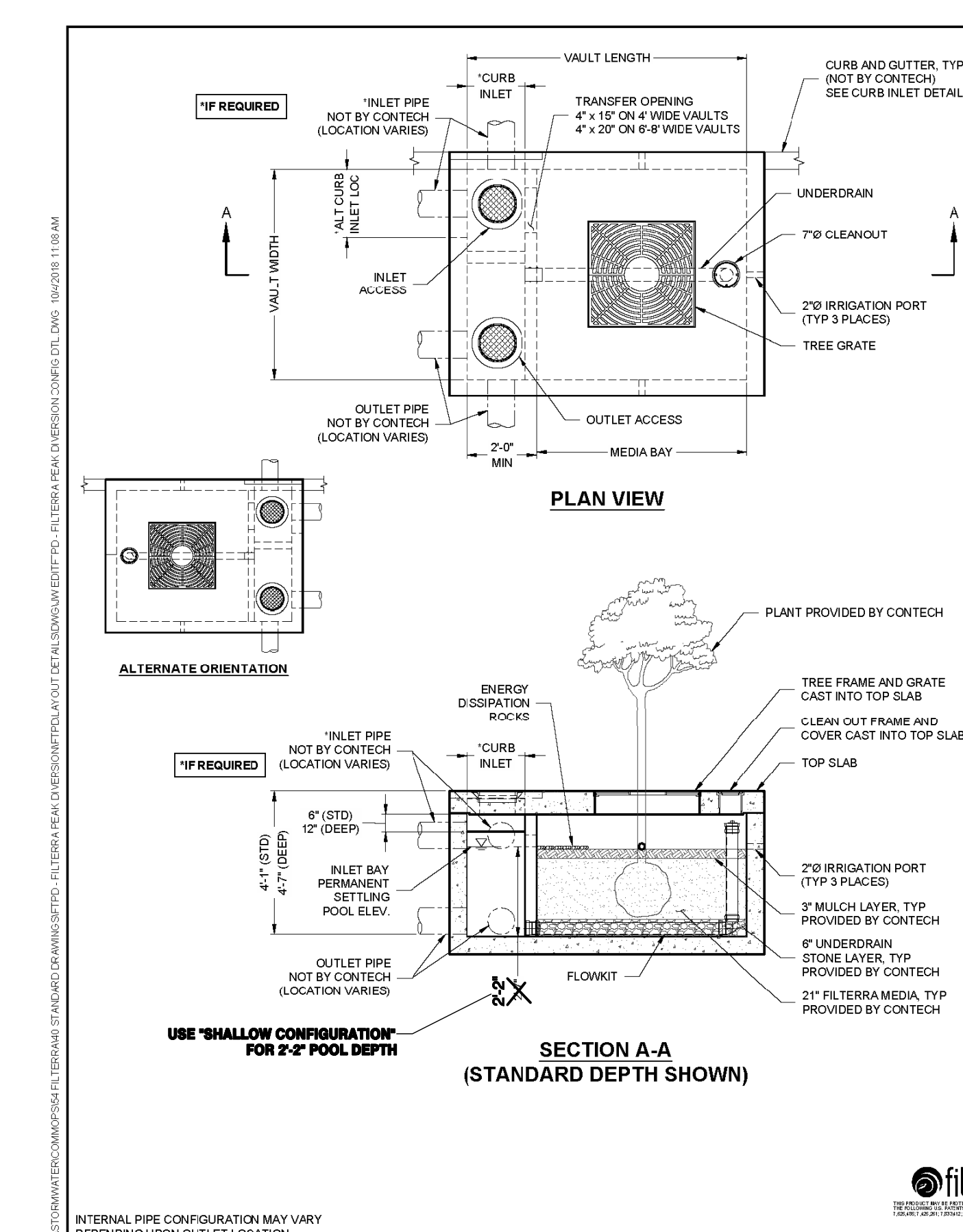
(24" SQUARE) (NOT TO SCALE)

FRAME AND COVER (30" ROUND) (NOT TO SCALE)

PERFORMANCE SPECIFICATION

GENERAL NOTES

INSTALLATION NOTES



FTPD STANDARD HEIGHT CONFIGURATION							
DESIGNATION (OPTIONS: P, T, PT)	AVAILABILITY	MEDIA BAY SIZE	VAULT SIZE (W x L)	WEIR LENGTH/ MAX CURB OPENING	*MAX BYPASS FLOW (CFS)	INLET/ OUTLET ACCESS DIA.	TREE GRATE QTY & SIZE
FTPD0604	N/A CA	4 x 4	4 x 6	1'-8"	1.4	12 1/2"	(1) 3' x 3'
FTPD0606	CA ONLY	6 x 6	6 x 8	1'-8"	1.4	12 1/2"	(1) 3' x 3'
FTPD0608	N/A MID-ATL	4 x 6	4 x 8	1'-8"	1.4	12 1/2"	(1) 3' x 3'
FTPD0608	MID-ATL ONLY	4.5 x 5.83	4.5 x 7.83	1'-8"	1.4	12 1/2"	(1) 3' x 3'
FTPD0604	ALL	6 x 6	6 x 8	1'-8"	1.4	12 1/2"	(1) 3' x 3'
FTPD0606	ALL	6 x 6	6 x 8	1'-8"	1.4	12 1/2"	(1) 3' x 3'
FTPD0608	ALL	6 x 8	6 x 10	1'-8"	1.4	12 1/2"	(1) 4' x 4'
FTPD0610	ALL	6 x 10	6 x 12	1'-8"	1.4	12 1/2"	(1) 4' x 4'
FTPD0710	ALL	7 x 10	7 x 13	2'-0"	2.1	24 1/2"	(1) 4' x 4'
FTPD08105	ALL	8 x 10.5	8 x 14	3'-0"	2.5	24 1/2"	(1) 4' x 4'
FTPD08125	ALL	8 x 12.5	8 x 16	3'-0"	2.5	24 1/2"	(1) 4' x 4'

N/A = NOT AVAILABLE

FTPD-D DEEP OPTION CONFIGURATION							
DESIGNATION (OPTIONS: P, T, PT)	AVAILABILITY	MEDIA BAY SIZE	VAULT SIZE (W x L)	WEIR LENGTH/ MAX CURB OPENING	*MAX BYPASS FLOW (CFS)	INLET/ OUTLET ACCESS DIA.	TREE GRATE QTY & SIZE
FTPD0604-D	N/A CA	4 x 4	4 x 6	1'-8"	4.6	12 1/2"	(1) 3' x 3'
FTPD0604-D	CA ONLY	4 x 4	4 x 6	1'-8"	4.6	12 1/2"	(1) 3' x 3'
FTPD0606-D	N/A MID-ATL	4 x 6	4 x 8	1'-8"	4.6	12 1/2"	(1) 3' x 3'
FTPD0606-D	MID-ATL ONLY	4.5 x 5.83	4.5 x 7.83	1'-8"	4.6	12 1/2"	(1) 3' x 3'
FTPD0604-D	ALL	6 x 6	6 x 8	1'-8"	4.6	12 1/2"	(1) 3' x 3'
FTPD0606-D	ALL	6 x 6	6 x 8	1'-8"	4.6	12 1/2"	(1) 3' x 3'
FTPD0608-D	ALL	6 x 8	6 x 10	1'-8"	4.6	12 1/2"	(1) 4' x 4'
FTPD0610-D	ALL	6 x 10	6 x 12	1'-8"	4.6	12 1/2"	(1) 4' x 4'
FTPD0710-D	ALL	7 x 10	7 x 13	2'-0"	8.8	24 1/2"	(1) 4' x 4'
FTPD08105-D	ALL	8 x 10.5	8 x 14	3'-0"	8.2	24 1/2"	(1) 4' x 4'
FTPD08125-D	ALL	8 x 12.5	8 x 16	3'-0"	8.2	24 1/2"	(1) 4' x 4'

N/A = NOT AVAILABLE

\*MAX BYPASS FLOW IS INTERNAL WEIR FLOW. SITE SPECIFIC ANALYSIS IS REQUIRED TO DETERMINE CURB INLET FLOW CAPACITY

### DETENTION VAULT OUTLET RISER DETAILS

\*=NOTCH OR MULTIPLE ORIFICES PER TABLES BELOW

SECTION A-A NTS

PLAN VIEW NTS

ELBOW RESTRICTOR DETAIL NTS

### VAULTS WITH NOTCH

VAULT #	I.E. OUT	ORIFICE #1 DIA.	ORIFICE #2 DIA.	NOTCH HEIGHT	NOTCH WIDTH	TOP OF RISER DIA.
1	372.41	1"	8"	12"	374.41	12"
2	376.07	1-5/16"	N/A	N/A	379.67	12"
3	377.80	3/4"	1-6"	3/16"	383.80	12"

### VAULT WITH 3 ORIFICES

VAULT #	I.E. OUT	ORIFICE #1 DIA.	ORIFICE #2 DIA.	ORIFICE #3 DIA.	TOP OF RISER DIA.	
4	392.00	2"	3/4"	2-7/8"	398.00	12"

### ISOMETRIC NTS

NOTES:

- See separate structural plans for additional vault information.
- See detail 02.01.07 & 02.01.08 for standard notes and additional detail.

### APPROVED

BY: CITY OF PUYALLUP DEVELOPMENT SERVICES

DATE: \_\_\_\_\_

NOTE:

THIS APPROVAL IS VOID AFTER 180 DAYS FROM APPROVAL DATE.

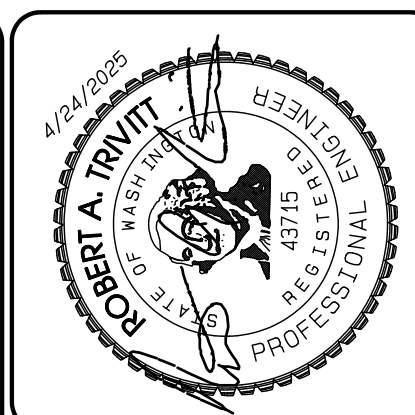
THE CITY WILL NOT BE RESPONSIBLE FOR ERRORS AND/OR OMISSIONS ON THESE PLANS.

FIELD CONDITIONS MAY DICTATE CHANGES TO THESE PLANS AS DETERMINED BY THE ENGINEERING SERVICES MANAGER.

### DRAWING

## SD-19

SHEET 33 OF 60



REVISION	DATE	DESCRIPTION
1	11/26/24	REVISED PER CITY REVIEW AND MAIL A. ADJUSTMENT.
2	3/4/25	REVISED PER CITY REVIEW.
3	4/21/25	REVISED PER CITY & RUSH REVIEW.
4	7/1/25	REVISED PER CITY REVIEW.
5	7/1/25	REVISED PER CITY REVIEW.
6	7/1/25	REVISED PER CITY REVIEW.
7	7/1/25	REVISED PER CITY REVIEW.
8	7/1/25	REVISED PER CITY REVIEW.
9	7/1/25	REVISED PER CITY REVIEW.
10	7/1/25	REVISED PER CITY REVIEW.

DESIGNED BY: JEFFREY OVERMAN	CHECKED BY: TROY HILL	APPROVED BY: MARK PALMER
DATE: 06/01/01	DATE: 06/01/01	DATE: 06/01/01
PROJECT NO: 06.01.01	PROJECT NO: 06.01.01	PROJECT NO: 06.01.01

### PRRWF20250235

### AZURE GREEN CONSULTANTS

feasibility • planning • engineering • surveying

409 East Pioneer, Suite A • Puyallup, WA 98372  
phone: 253.770.3144 fax: 253.770.3142

### Storm Details

Bradley Heights

Timberlane Partners  
1816 11th Ave Unit C  
Seattle, WA 98122  
Phone: 509.898.0326  
Fax: jordan@timberlanepartners.com

### DRAWING

## SD-19

SHEET 33 OF 60