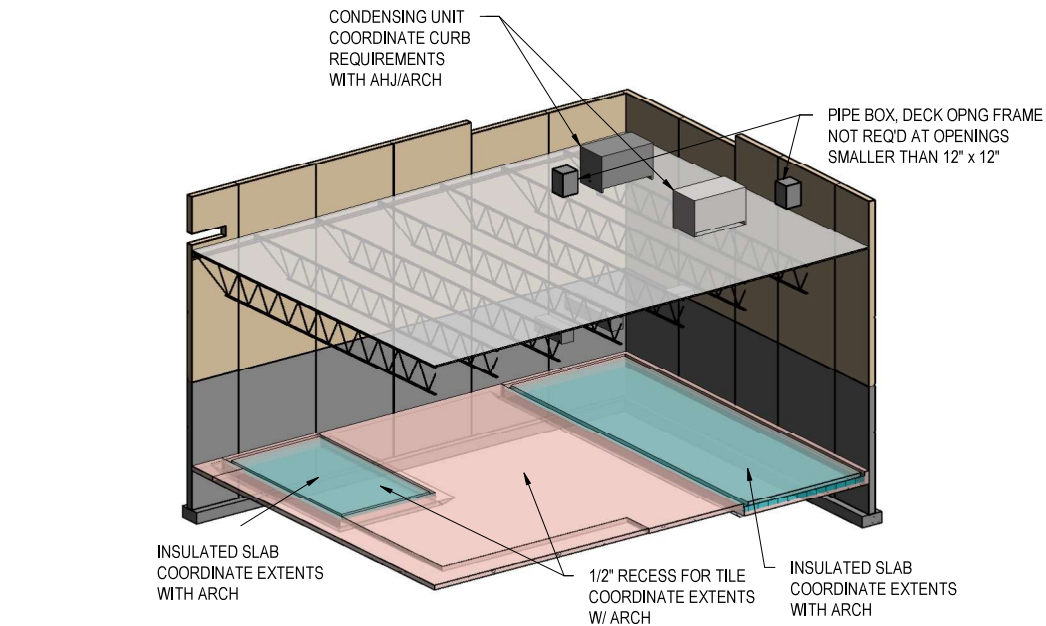


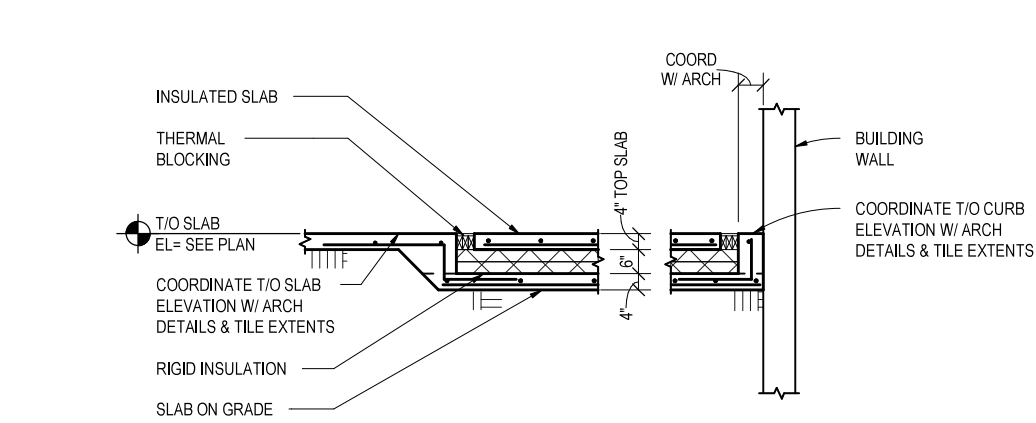
## 1 COOLER/FREEZER SLAB PLAN

CFR-S1R SCALE: 1/8" = 1'-0"



## 2 3D VIEW COOLER/FREEZER

CFR-S1R SCALE:

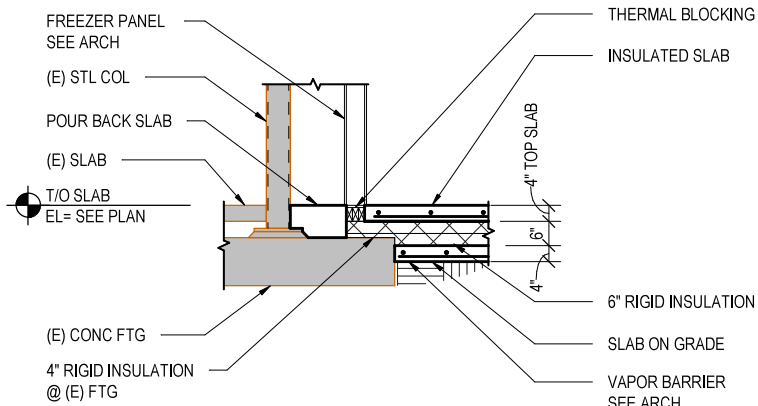


## 3 SECTION AT INSULATED SLAB - EXIST SLAB ON GRADE

CFR-S1R SCALE: 1/4" = 1'-0"

The approved construction plans, documents, and all engineering must be posted on the job at all inspections in a visible and readily accessible location.

Full sized legible color plans are required to be provided by the permittee on site for inspection.

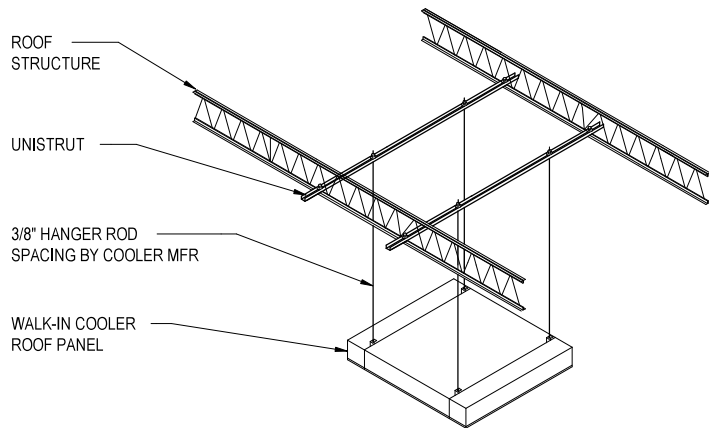


## 4 INSULATED SLAB @ EXIST COL - EXIST SLAB ON GRADE

CFR-S1R SCALE: 1/4" = 1'-0"

Approval of submitted plans is not an approval of omissions or oversights by this office or non compliance with any applicable regulations of local government. The contractor is responsible for making sure that the building complies with all applicable codes and regulations of the local government.

Separate Electrical Permit is required with the Washington State Department of Labor & Industries.  
<https://lni.wa.gov/licensing-permits/electrical/electrical-permits-fees-and-inspections>  
or call for Licensing Information:  
1-800-647-0982



## 5 3D VIEW REAR-FED DAIRY COOLERS

CFR-S1R SCALE: 1/8" = 1'-0"

## CRITERIA NOTES

### A. Design

Live Load: Retail = 100psf  
Upper Level / Elevated Retail = 75psf

The following conditions require the design of hangers and channel strut.  
Design for 5 psf (DL) and 20 psf (LL) above the cooler/freezer with a typical 4'x7' hanger spacing, refer to 5/CFR-S1R:  
- Coolers and Freezers installed in multi-level building where elevator size restricts panel size.

Notes:  
EOR to review and approve supplier engineered shop drawings, calculations and anchorage.

Verify the finished floor elevation at the insulated slabs and coordinate floor elevation transitions & quarry tile locations with Architect.

Columns can be located in coolers.

Columns cannot be located in freezers, provide 6" clr minimum between cooler/freezer wall and columns.

Provide 6" clr minimum between building wall and cooler/freezer wall

Avoid interference with systems below grade.

At coolers, roughen slab for quarry tile installation.

Verify minimum 12'-0" clear height for all refrigeration equipment if mounted on cooler/freezer boxes.

### B. Existing Slab on grade (Refer to 3/CFR-S1R)

Provide insulated slab at freezer recessed in the slab on grade (3 1/2 - 4" concrete + 6" insulation + 4" concrete). Cooler slab is not insulated.

\*\*Insulation thickness can be reduced to 4" thickness when required to accomodate existing top of footing elevations (Refer to 4/CFR-S1R)

### C. Existing Structural Slab on Grade:

Freezer supplier will provide insulated floor panels and ramp.

Cooler does not require insulated floor panel.

At coolers, roughen slab for quarry tile installation.

### D. Elevated Existing Structural Slab:

Freezer and cooler will require insulated floor panels.

Freezer and cooler supplier will provide insulated floor panels and ramps

PRMH20250744

GROCERY  
PICK-UP  
COOLER/FREEZER

CFR-S1R

UPDATED  
2021\_01



NOT FOR CONSTRUCTION