

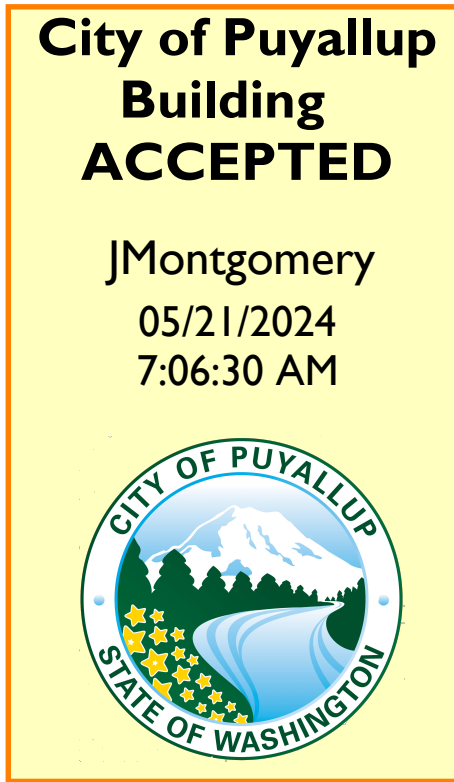
PRCNC20240424

Wesley Bradley Park 2-Care Center

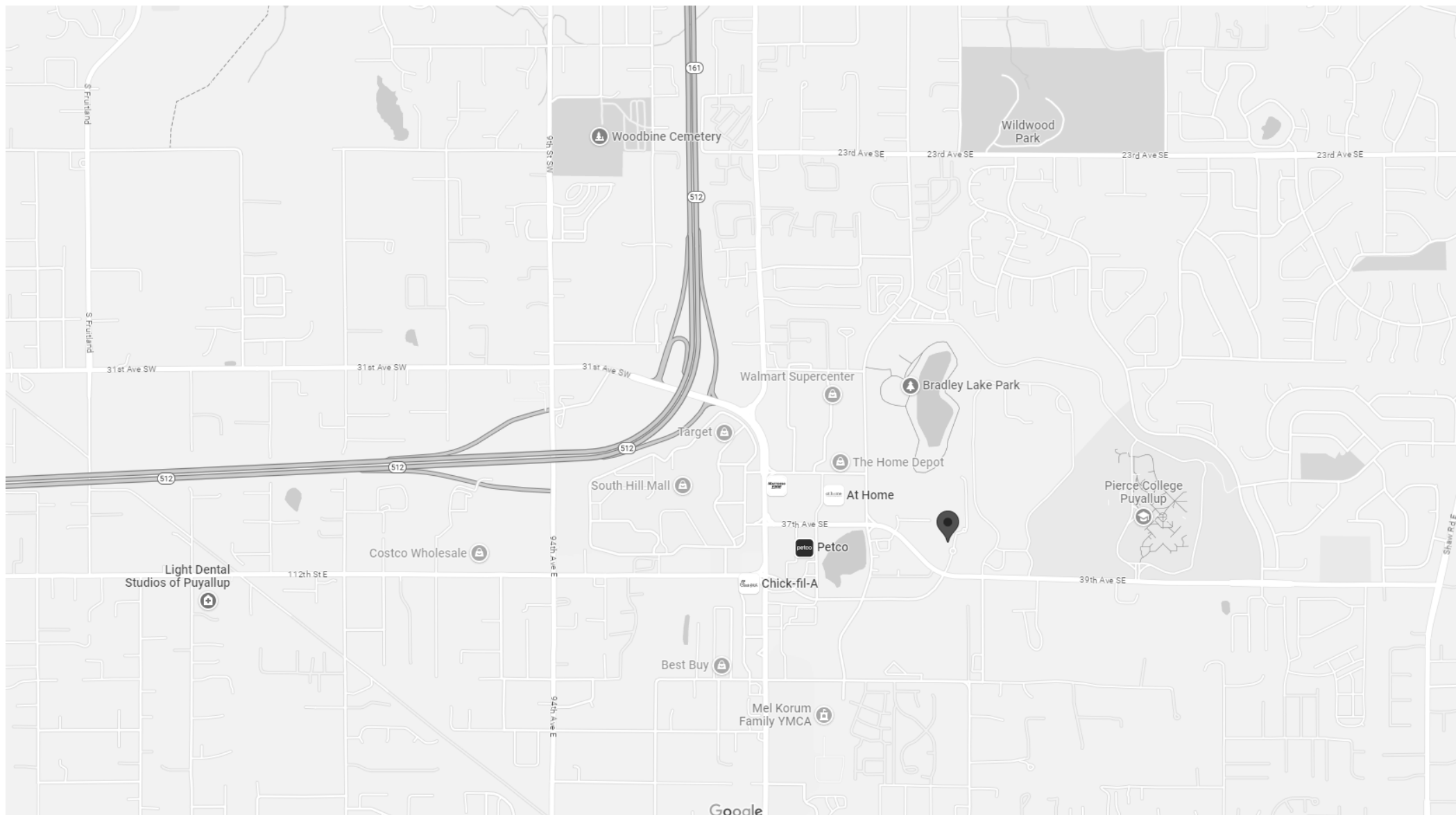
707 39th Avenue Southeast, Puyallup, Washington 98374

SHEET INDEX

SHEET NUMBER	SHEET NAME	6-2-23	7-20-23	10-6-23	4-4-24	11-27-24														
		PERMIT SET	WIFI LOCATION UPDATE	PERMIT SET/DOH SUBMITTAL	COMMON AREA DATA OUTLET CHANGE	PROGRESS SET														
TECHNOLOGY																				
T000	COVER SHEET	•	•	•	•	•														
T100N	LEVEL 0 TECHNOLOGY PLAN CARE CENTER-NORTH	•	•	•	•	•														
T100S	LEVEL 0 TECHNOLOGY PLAN CARE CENTER-SOUTH	•	•	•	•	•														
T101N	LEVEL 1 TECHNOLOGY PLAN CARE CENTER-NORTH	•	•	•	•	•														
T101S	LEVEL 1 TECHNOLOGY PLAN CARE CENTER-SOUTH	•	•	•	•	•														
T300	AUDIO/VISUAL AREA PLANS	•	•	•	•	•														
T500	UNIT PLANS	•	•	•	•	•														
T600	TECHNOLOGY DETAILS	•	•	•	•	•														
T700	TECHNOLOGY SCHEDULES	•	•	•	•	•														



FULL SIZED LEDGIBLE **COLOR** PLANS ARE REQUIRED TO BE PROVIDED BY THE PERMITTEE ON SITE FOR ALL INSPECTIONS **(MIN. PLAN SIZE 24" X 36")**



SITE MAP

LEGEND									
LIGHT FIXTURES		LIGHTING CONTROLS		VOICE/DATA/TV		FIRE ALARM SYSTEM		MOTOR CONTROLS	
RECESSED-LAY-IN	MOUNTING HEIGHT	SWITCH-1 POLE	44"	V VOICE/DATA RECEPTACLE (V=VOICE, D=DATA)	18"	FACP FIRE ALARM CONTROL PANEL	N/A	T THERMOSTAT	44"
RECESSED WALL/STEP LIGHT	#	SWITCH-2 POLE	44"	X DATA RECEPTACLE (X=4 OF JACKS/CABLES)	18"	FACP FIRE ALARM ANNUNCIATOR PANEL	N/A	PUSHBUTTON STATION-ONE BUTTON	44"
JUNCTION BOX NIGHT LIGHT		SWITCH-3 POLE	44"	V VOICE RECEPTACLE	18"	FACP FIRE ALARM AMPLIFIER	N/A	PUSHBUTTON STATION-TWO BUTTON	44"
RECESSED DOWNLIGHT		SWITCH-3 WAY	44"	W VOICE RECEPTACLE-WALL MOUNTED	54"	NAC PANEL	N/A	PUSHBUTTON STATION-THREE BUTTON	44"
RECESSED DOWNLIGHT NIGHT LIGHT OR EMERGENCY		SWITCH-4 WAY	44"	DATA-WIFI	CEILING	SMOKE DETECTOR-WALL MOUNTED	<12" FROM CEILING	PUSHBUTTON-EMERGENCY STOP	44"
RECESSED ADJUSTABLE DOWNLIGHT/WALL WASHER		SWITCH-DOUBLE	44"	TELEVISION RECEPTACLE-WALL MOUNTED	18"	SMOKE DETECTOR-CEILING MOUNTED	CEILING	MOTOR WITH SINGLE POINT CONNECTION (REFER TO EQUIPMENT SCHEDULE)	-
144 LAY-IN		SWITCH-TRIPLE	44"	MEDIA PANEL	48"	SMOKE DETECTOR/CO DETECTOR-WALL MOUNTED	<12" FROM CEILING	MOTOR WITH TOGGLE SWITCH (REFER TO EQUIPMENT SCHEDULE)	-
RECESSED LINEAR		SWITCH-KEYED	44"	TELECOM ROOM	N/A	SMOKE DETECTOR/CO DETECTOR-CEILING MOUNTED	CEILING	MOTOR WITH DISCONNECT SWITCH (REFER TO EQUIPMENT SCHEDULE)	-
242 LAY-IN		SWITCH-MOTOR RATED	44"	MAIN EQUIPMENT/DEMARC ROOM	N/A	CO DETECTOR-WALL MOUNTED	CEILING	MOTOR WITH COMBINATION STARTER (REFER TO EQUIPMENT SCHEDULE)	-
242 LAY-IN NIGHT LIGHT OR EMERGENCY		SWITCH-WITH PILOT LIGHT	44"	X RECEPTACLE-VOICE/TV	18"	CO DETECTOR-CEILING MOUNTED	CEILING	MOTOR WITH CO/BD AND PLUG CONNECTION (REFER TO EQUIPMENT SCHEDULE)	-
244 LAY-IN		SC SWITCH-SPEED CONTROLLER	44"	H RECEPTACLE-VOICE/DATA/TV	18"	HEAT DETECTOR	44"	RANGE HOOD	-
244 LAY-IN NIGHT LIGHT OR EMERGENCY		T SWITCH-TIMER	44"	A RECEPTACLE-DATA	18"	PULL STATION	44"	MOTORIZED DAMPER	-
SURFACE MOUNTED	MOUNTING HEIGHT	TD SWITCH-TIME DELAY	44"	C RECEPTACLE-VOICE/DATA	18"	DUCT SMOKE DETECTOR	VARIES	FIRE-SMOKE DAMPER	-
SURFACE LINEAR		HEX SWITCH-DIMMER (X=REFER TO DIMMER SCHEDULE)	44"	G RECEPTACLE-VOICE/DATA/DATA	18"	REMOTE TEST SWITCH	44"	TIME CLOCK	-
TRACK LIGHTING WITH HEADS	#	EXX OCCUPANCY SENSOR-WALL MOUNTED (X=REFER TO SENSOR SCHEDULE)	44"	E RECEPTACLE-DATA/DATA	18"	FLOW SWITCH	N/A		
TRACK LIGHTING WITH PENDANTS	#	OCCUPANCY SENSOR-CEILING MOUNTED (X=REFER TO SENSOR SCHEDULE)		Y RECEPTACLE-DATA/TV	18"	TAMPER SWITCH	N/A		
GENERAL SURFACE MOUNTED LIGHT (CEILING)	#	OCCUPANCY SENSOR-DIMMER SWITCH-WALL MOUNTED (X=REFER TO SENSOR SCHEDULE)		SECURITY	MOUNTING HEIGHT	HORN/CEILING MOUNTED (L=LOW FREQUENCY - S=SPEAKER)	CEILING	MISCELLANEOUS	
GENERAL SURFACE MOUNTED LIGHT (WALL)	#	DAYLIGHT SENSOR		AP ALARM PANEL	VARIES	HORN/WALL MOUNTED (L=LOW FREQUENCY - S=SPEAKER)	80"-90"	CONDUIT ROUTED UPWARDS	
GENERAL SURFACE MOUNTED LIGHT (WALL)	#	POWER PACK		S SIREN	VARIES	STROBE-CEILING MOUNTED	CEILING	CONDUIT ROUTED DOWNWARDS	
GENERAL SURFACE MOUNTED LIGHT-NIGHT LIGHT OR EMERGENCY (WALL)	#	ROOM CONTROLLER		DOOR CONTACT	N/A	STROBE-WALL MOUNTED	80"-90"	CONDUIT CONTINUED ELSEWHERE	
GENERAL SURFACE MOUNTED LIGHT (WALL)	#	PHOTOCELL		MOTION DETECTOR-WALL MOUNTED	CEILING	HORN/STROBE-CEILING MOUNTED (L=LOW FREQUENCY - S=SPEAKER - C=CHIME)	80"-90"	CONDUIT TERMINATED OR STUBBED	
GENERAL SURFACE MOUNTED LIGHT-NIGHT LIGHT OR EMERGENCY (WALL)	#	LIGHTING CONTROL PANEL (X=REFER TO SCHEDULE)	#	MOTION DETECTOR-CEILING MOUNTED-SBP	90"	HORN/STROBE-WALL MOUNTED (L=LOW FREQUENCY - S=SPEAKER - C=CHIME)	80"-90"	FIXTURE TAG (X=FIXTURE TYPE - XX=CIRCUIT NUMBER)	
LINEAR SURFACE MOUNTED LIGHT (WALL)	#	OVERRIDE SWITCH (X=REFER TO SCHEDULE)	44"	GLASS BREAK SENSOR-WALL MOUNTED	CEILING	MINI HORN	80"-90"	NUMBERED NOTE	
LINEAR SURFACE MOUNTED LIGHT (WALL)	#	TIME CLOCK		GLASS BREAK SENSOR-CEILING MOUNTED	CEILING	DOOR HOLDER	VARIES		
NIGHT LIGHT OR EMERGENCY (WALL)	#	GENERAL BRANCH CIRCUITS	MOUNTING HEIGHT	OVERHEAD DOOR CONTACT	N/A	CONTROL MODULE	N/A		
PVC LIGHT	#	DUPLEX RECEPTACLE	18"	MONITOR MODULE	N/A	DOORBELL	N/A		
SUSPENDED	MOUNTING HEIGHT	DUPLEX RECEPTACLE-ABOVE COUNTER	18"	DOOR BUZZER	N/A	DOOR BUZZER	N/A		
PENDANT/CHANDIELIER (ROUND)	#	DUPLEX RECEPTACLE-BOTTOM HALF SWITCHED	18"	ACCESS CONTROLS	MOUNTING HEIGHT	POST INDICATOR VALVE	N/A		
PENDANT/CHANDIELIER (LINEAR)	#	DOUBLE DUPLEX RECEPTACLE	18"	PROXIMITY READER-CARD READER (X=REFER TO CARD READER SCHEDULE)	44"	FIRE-SMOKE DAMPER	VARIES		
Ceiling Fan	MOUNTING HEIGHT	DOUBLE DUPLEX RECEPTACLE-ABOVE COUNTER	#	KEYPAD	44"	FIRE ALARM SMOKE DETECTOR - STAND ALONE			
HEAT LAMP	MOUNTING HEIGHT	DOUBLE DUPLEX RECEPTACLE-GFI PROTECTED	18"	CARD READER/KEYPAD	CEILING	SMOKE DETECTOR-WALL MOUNTED-120V			
EMERGENCY	MOUNTING HEIGHT	DOUBLE DUPLEX RECEPTACLE-GFI PROTECTED-ABOVE COUNTER	#	RF READER	N/A	SMOKE/CO DETECTOR-CEILING MOUNTED-120V			
EXIT LIGHT-CEILING MOUNTED	#	DOUBLE DUPLEX RECEPTACLE-GFI PROTECTED-ABOVE COUNTER	#	MAGNETIC LOCK	44"	SMOKE/CO DETECTOR-CEILING MOUNTED-120V			
EXIT LIGHT-WALL MOUNTED	#	SINGLE RECEPTACLE	18"	KEY SWITCH	44"	SMOKE RELAY-120V			
EXIT LIGHT W/EMERGENCY HEADS-CEILING MOUNTED	#	SPECIAL RECEPTACLE (X=REFER TO DEVICE SCHEDULE)	18"	LOCAL ALARM	VARIES				
EXIT LIGHT W/EMERGENCY HEADS-WALL MOUNTED	#	POWER POLE	#	DOOR CONTACT	N/A				
TWIN HEAD EMERGENCY LIGHT	#	REFER TO NUMBERED NOTES FOR TYPE AND QUANTITY	#	REQUEST TO EXIT SENSOR	N/A				
EMERGENCY BATTERY UNIT	#	JUNCTION BOX	#	QUIET ENTRY PANEL	44"				
REMOTE EMERGENCY HEADS (TWIN)	#	FLOOR BOX	#	INTERCOM	44"				
REMOTE EMERGENCY HEAD	#	DROP COORD	84"	DOOR RELEASE PUSH BUTTON	44"				
EXTERIOR	MOUNTING HEIGHT	CLOCK RECEPTACLE	84"	OVERRIDE RELEASE SWITCH	48"				
EXTERIOR FLOODLIGHT	#	GENERAL BRANCH CIRCUIT ABBREVIATIONS		HANDICAP PUSHBUTTON	VARIES				
EXTERIOR LIGHT POLE	#	USB DUPLEX/USB COMBINATION RECEPTACLE		ELECTRIC STRIKE	VARIES				
EXTERIOR BOLLARD	#	IG ISOLATED GROUND		CCTV	MOUNTING HEIGHT				
EXTERIOR WALL PACK	#	TVSS TVSS		CCTV CAMERA (X=REFER TO CCTV SCHEDULE)					
POWER DISTRIBUTION	MOUNTING HEIGHT	M MICROWAVE	6"	AREA OF REFUGE/TWO-WAY COMMUNICATION	MOUNTING HEIGHT				
PANELBOARD OR LOAD CENTER	#	R RANGE		AREA OF REFUGE ILLUMINATED SIGN	CEILING				
DISCONNECT SWITCH	#	DR DRYER		AREA OF REFUGE INTERCOM	44"				
TRANSFORMER	#	W WASHING MACHINE							
METER SOCKET OR METER CENTER	#	DW DISHWASHER							
COMBINATION MOTOR STARTER	#	DWGD DISHWASHER/GARBAGE DISPOSAL							
HAND VOLT	#	H HOOD							
GROUND	#	REF REFRIGERATOR							



Collins
ELECTRICAL + TECHNOLOGY

278 State Street
St. Paul, Minnesota 55107-1679
Telephone (651) 224-2633
Fax (651) 292-0359
www.collinsmn.com

I HEREBY CERTIFY THAT THIS PLAN SPECIFICATION OR REPORT WAS PREPARED BY ME OR UNDER MY DIRECT SUPERVISION AND THAT I AM A DULY LICENSED PROFESSIONAL ENGINEER UNDER THE LAWS OF THE STATE OF MINNESOTA

DATE: - REG. #:

SIGNED:

DRAWN BY: J. VERDICK
CHECKED BY: P. MYERS
DATE: -
JOB NUMBER: -
FILE NAME: REVIT 2022

REVISIONS

NO.	DATE	DESCRIPTION
1	6-2-23	PERMIT SET
2	7-20-23	WIFI LOCATION UPDATE
3	10-6-23	PERMIT SET/DOH SUBMITTAL
4	4-4-24	COM. AREA DATA OUT. CHANGE
5	11-27-24	PROGRESS SET

City of Puyallup
Development & Permitting Services
ISSUED PERMIT

Building

Planning

Engineering

Public Works

Fire

Traffic

WESLEY BRADLEY PARK 2
PHASE 2 - CARE CENTER
707 39TH AVENUE SOUTHEAST
PUYALLUP, WASHINGTON 98374

COVER SHEET

SCALE: 12" = 1'-0"

T000

A. SEE SEPARATE FLOOR PLANS FOR WIFI ACCESS POINT LOCATIONS. INSTALL ONE CAT5e CABLE TO EACH LOCATION. INSTALL OWNER FURNISHED ACCESS POINT.

1 FIELD VERIFY LOCATION OF ELEVATOR CONTROL EQUIPMENT AND ROUTE ELEVATOR PHONE CABLE ACCORDINGLY.

I HEREBY CERTIFY THAT THIS PLAN SPECIFICATION
 OR REPORT WAS PREPARED BY ME OR UNDER MY
 DIRECT SUPERVISION AND THAT I AM A DULY
 LICENSED PROFESSIONAL ENGINEER UNDER THE
 LAWS OF THE STATE OF MINNESOTA
 DATE: - REG. #:

DRAWN BY: J. VERDICK

CHECKED BY: P. MYERS
DATE: -

JOB NUMBER:
FILE NAME: REV/IT 2022

REVISIONS

1	6-2-23	PERMIT SET
2	7-20-23	WIFI LOCATION UPDATE
3	10-6-23	PERMIT SET/DOH SUBMITTAL
4	4-4-24	COM. AREA DATA OUT. CHANGE
5	11-27-24	PROGRESS SET

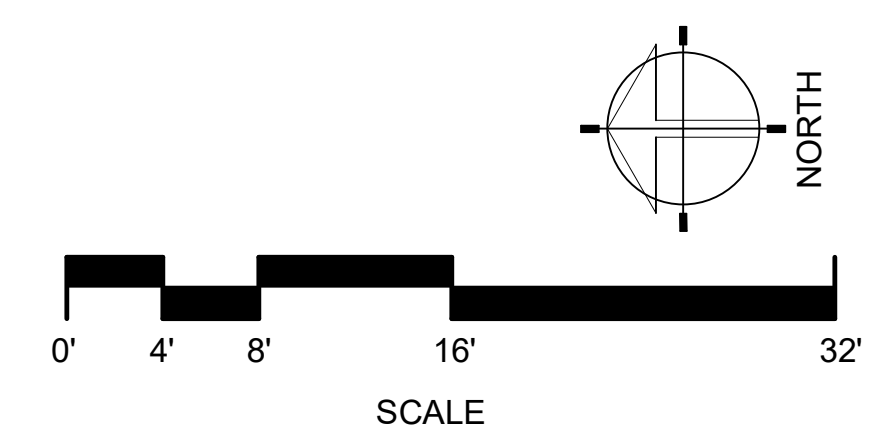
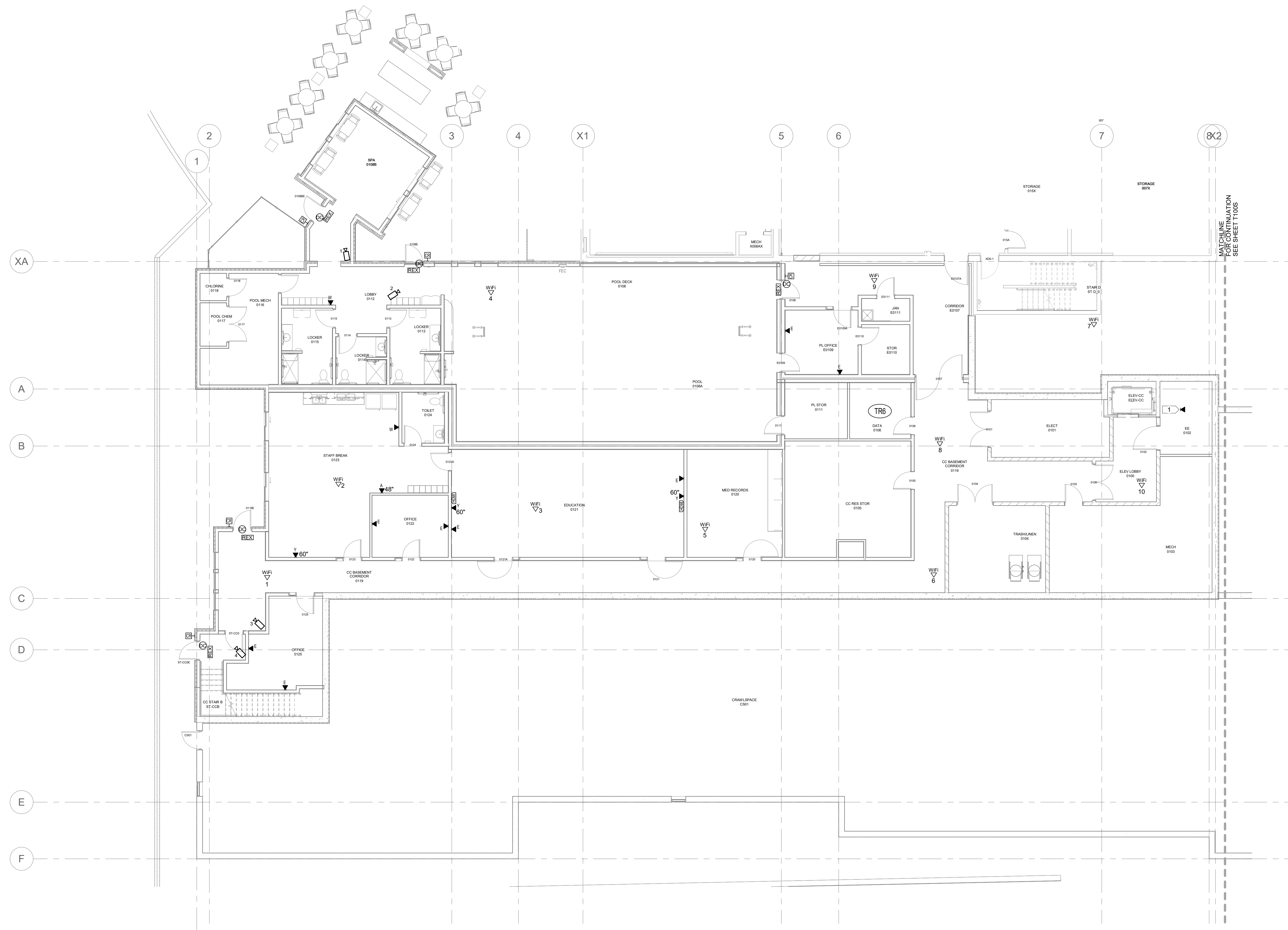
City of Puyallup
Development & Permitting Services
ISSUED PERMIT

Building	Planning
Engineering	Public Works
Fire	Traffic

WESLEY BRADLEY PARK 2
PHASE 2 - CARE CENTER
707 39TH AVENUE SOUTHEAST
PUYALLUP, WASHINGTON 98374

SCALE: 1/8" = 1'-0"

T100N



GENERAL NOTES

A. SEE SEPARATE FLOOR PLANS FOR WIFI ACCESS POINT LOCATIONS. INSTALL ONE CAT5e CABLE TO EACH LOCATION. INSTALL OWNER FURNISHED ACCESS POINT



HEREBY CERTIFY THAT THIS PLAN SPECIFICATION
OR REPORT WAS PREPARED BY ME OR UNDER MY
DIRECT SUPERVISION AND THAT I AM A DULY
LICENSED PROFESSIONAL ENGINEER UNDER THE
LAWS OF THE STATE OF MINNESOTA
DATE: - REG. #:

SIGNED:

DRAWN BY: J. VERDICK
CHECKED BY: P. MYERS
DATE: -
JOB NUMBER:
FILE NAME: REVIT 2022

[illegible]

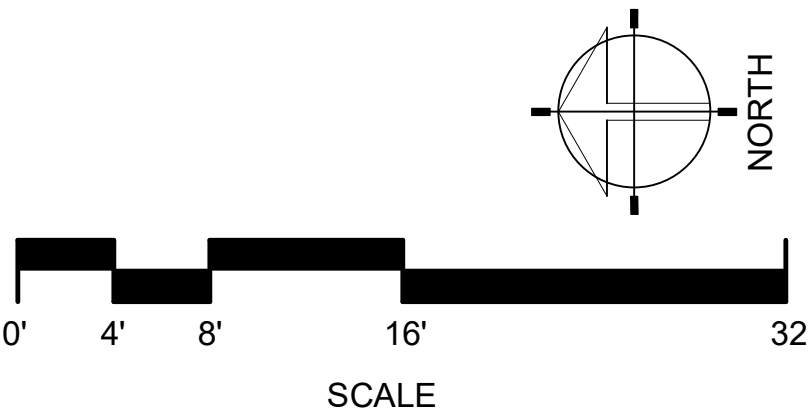
City of Puyallup Development & Permitting Services ISSUED PERMIT	
Building	Planning
Engineering	Public Works
Fire	Traffic

WESLEY BRADLEY PARK 2
PHASE 2 - CARE CENTER
707 39TH AVENUE SOUTHEAST
PUYALLUP, WASHINGTON 98374

LEVEL 0 TECHNOLOGY
PLAN CARE
CENTER-SOUTH

SCALE: 1/8" = 1'-0"

T100S



GENERAL NOTES

A. SEE SEPARATE FLOOR PLANS FOR WIFI ACCESS POINT LOCATIONS. INSTALL ONE CAT5e CABLE TO EACH LOCATION. INSTALL OWNER FURNISHED ACCESS POINT

NUMBERED NOTES

- 1 CONFIGURE DOOR CONTROLS TO RELEASE ON FIRE ALARM AND CENTRAL OVERRIDE SWITCH. CONFIGURE DOOR TO BE SHUT BY SHUTTING DOWN THE VALID KEY-PAD CODE ENTRY WITH ALARM DRY CONTACT TO BE CONNECTED TO ECALL SYSTEM WIRELESS TRANSMITTER.
- 2 DOOR WILL HAVE WANDGUARD CONTROL EGRESS COORDINATE CONTROLS WITH WANDGUARD VENDOR.
- 3 OVERRIDE SWITCH TO RELEASE ALL EGRESS CONTROL DOOR.
- 4 VERIFY TERMINATION PROCEDURE AND LOCATION WITH POS VENDOR. IF NO POS SYSTEM THEN TERMINATE. LABEL "FUTURE USE" AND LEAVE COILED ABOVE CEILING.
- 5 FURNISH AND INSTALL DECODER MONITOR AND IP VIDEO DECODER TO CONTROL CCTV VIDEO.
- 6 FOR AUDIO/VISUAL LAYOUT OF THIS AREA SEE DETAIL 2/300.
- 7 FOR AUDIO/VISUAL LAYOUT OF THIS AREA SEE DETAIL 1/300.



HEREBY CERTIFY THAT THIS PLAN SPECIFICATION
OR REPORT WAS PREPARED BY ME OR UNDER MY
DIRECT SUPERVISION AND THAT I AM A DULY
LICENSED PROFESSIONAL ENGINEER UNDER THE
LAWS OF THE STATE OF MINNESOTA
DATE: - REG. #:

SIGNED

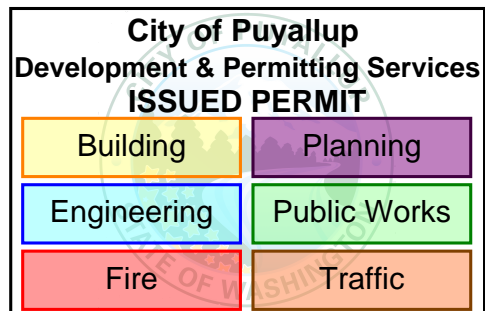
DRAWN BY: J. VERDICH

CHECKED BY: P. MYERS

DATE: -

JOB NUMBER:

FILE NAME: REVIT 2022		
REVISIONS		
1	6-2-23	PERMIT SET
2	7-20-23	WIFI LOCATION UPDATE
3	10-6-23	PERMIT SET/DOH SUBMITTAL
4	4-4-24	COM. AREA DATA OUT. CHANGE
5	11-27-24	PROGRESS SET



WESLEY BRADLEY PARK 2
PHASE 2 - CARE CENTER
707 39TH AVENUE SOUTHEAST
PUYALLUP, WASHINGTON 98374

LEVEL 1 TECHNOLOGY
PLAN CARE
CENTER-NORTH

SCALE: 1/8" = 1'-0"

T101N



Make SAFETY as part of every plan

PRCNC20240424

GENERAL NOTES

A SEE SEPARATE FLOOR PLANS FOR WIFI ACCESS POINT LOCATIONS. INSTALL ONE CAT5e CABLE TO EACH LOCATION. INSTALL OWNER FURNISHED ACCESS POINT.

NUMBERED NOTES

- 1 PUSH BUTTON FOR VESTIBULE DOOR RELEASE. INSTALL 2x4 1x8 CABLE TO S2 ACCESS CONTROL PANEL.
- 2 PUSH BUTTON/PANIC BUTTON CONNECTED TO MONITORED BURGLAR ALARM SYSTEM. CABLE TO MAIN ER.
- 3 DOOR WILL HAVE WANDERGUARD. COORDINATE CONTROLS WITH WANDERGUARD VENDOR.
- 4 CONFIGURE DOOR CONTROLS TO RELEASE ON FIRE ALARM AND CENTRAL OVERRIDE SWITCH. CONFIGURE DOOR CONTACT TO BE SHUNTED FOR A VALID KEYPAD CODE ENTRY WITH ALARM DRY CONTACT TO BE CONNECTED TO ECALL SYSTEM WIRELESS TRANSMITTER.
- 5 OVERRIDE SWITCH TO RELEASE ALL EGRESS CONTROL DOOR LOCKS.
- 6 VERIFY TERMINATION PROCEDURE AND LOCATION WITH POS VENDOR. IF NO POS SYSTEM THEN TERMINATE, LABEL FUTURE USE AND LEAVE COILED ABOVE CEILING.

Collins
ELECTRICAL + TECHNOLOGY
278 State Street
St. Paul, Minnesota 55107-1679
Telephone (651) 224-2633
Fax (651) 292-0359
www.collinsmn.com

I HEREBY CERTIFY THAT THIS PLAN SPECIFICATION OR REPORT WAS PREPARED BY ME OR UNDER MY DIRECT SUPERVISION AND THAT I AM A DULY LICENSED PROFESSIONAL ENGINEER UNDER THE LAWS OF THE STATE OF MINNESOTA
DATE: - REG. #:

SIGNED:

DRAWN BY: J. VERDICK
CHECKED BY: P. MYERS
DATE: -
JOB NUMBER:
FILE NAME: REVIT 2022

REVISIONS		
1	6-2-23	PERMIT SET
2	7-20-23	WIFI LOCATION UPDATE
3	10-6-23	PERMIT SET/DOH SUBMITTAL
4	4-4-24	COM. AREA DATA OUT. CHANGE
5	11-27-24	PROGRESS SET

City of Puyallup
Development & Permitting Services
ISSUED PERMIT

Building	Planning
Engineering	Public Works
Fire	Traffic

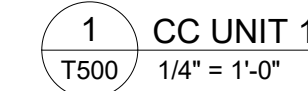
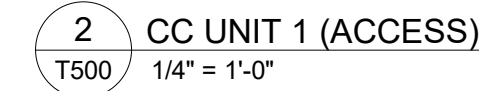
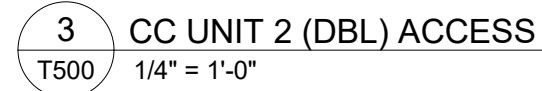
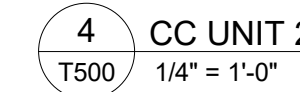
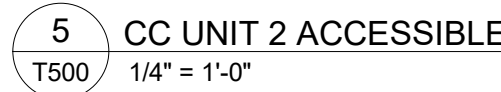
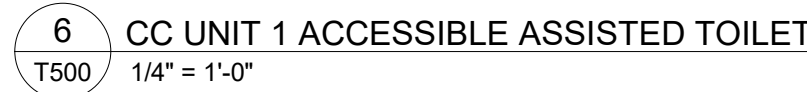
WESLEY BRADLEY PARK 2
PHASE 2 - CARE CENTER
707 39TH AVENUE SOUTHEAST
PUYALLUP, WASHINGTON 98374

LEVEL 1 TECHNOLOGY
PLAN CARE
CENTER-SOUTH

SCALE: 1/8" = 1'-0"

T101S





A. ALL CABLES FOR CC TYPE UNITS ARE HOMERUNS TO THE TELECOM ROOM.



SIGNED:

REVISIONS

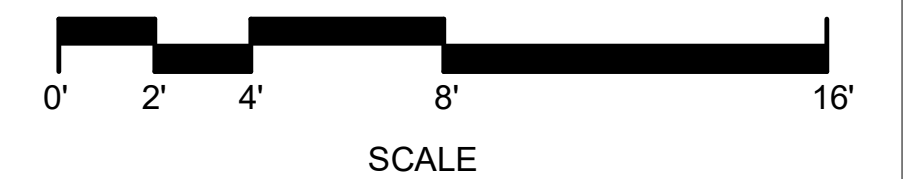
[illegible]

The diagram shows a central box labeled "City of Puycallup Development & Permitting Services ISSUED PERMIT". This central box is surrounded by six other boxes, each representing a different permit type: Building, Planning, Engineering, Public Works, Fire, and Traffic.

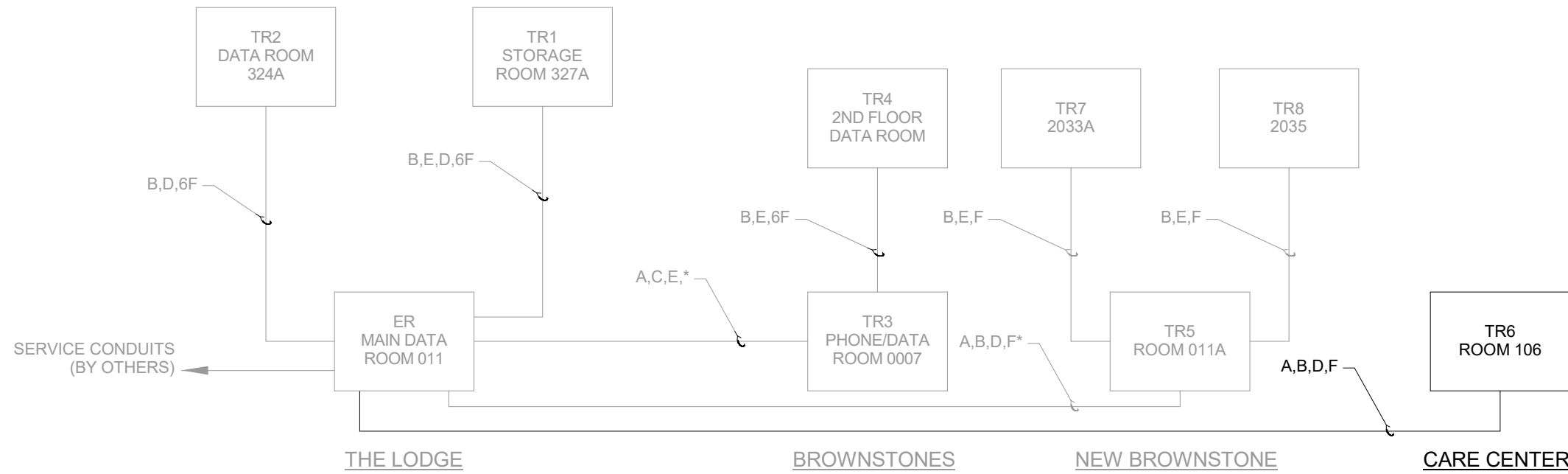
WESLEY BRADLEY PARK 2
PHASE 2 - CARE CENTER
707 39TH AVENUE SOUTHEAST
PUYALLUP, WASHINGTON 98374

SCALE: 1/4" = 1'-0"

T500



PRCNC20240424



CABLE LEGEND

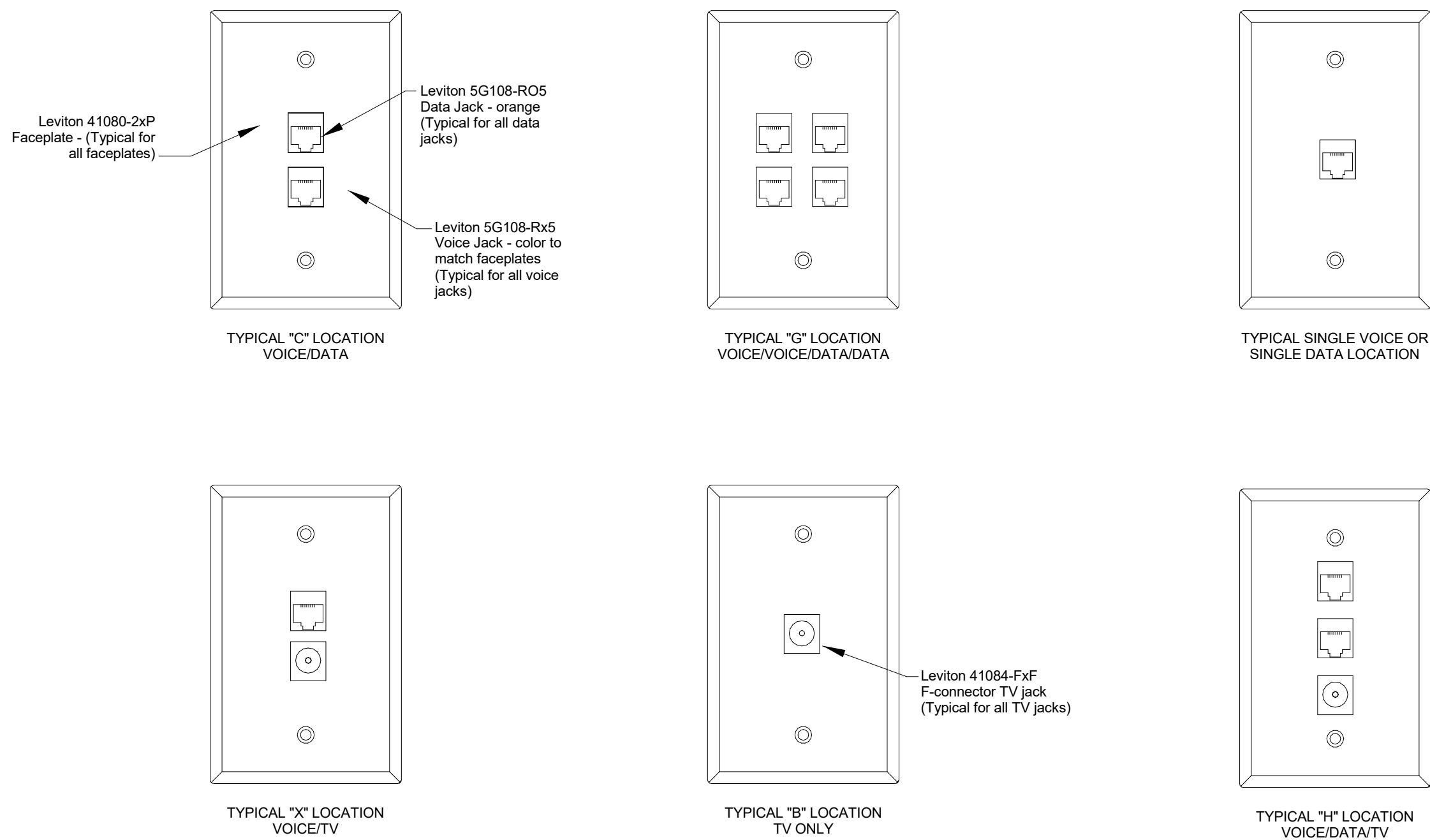
- A - 6 STRAND 5M FIBER
- B - 6 STRAND OM3 FIBER
- C - 12 STRAND OM3 FIBER
- D - 100 PAIR COPPER
- E - 50 PAIR COPPER
- F - RG11 COAX

NOTES:

1. INCLUDE LIGHTNING/SURGE PROTECTED BUILDING ENTRANCE PROTECTION ON BOTH ENDS OF CABLE.
2. COORDINATE WITH LOCAL CABLE TV PROVIDER FOR THEIR INSTALLATION OF BACKBONE SERVICE CABLES BETWEEN BUILDINGS.

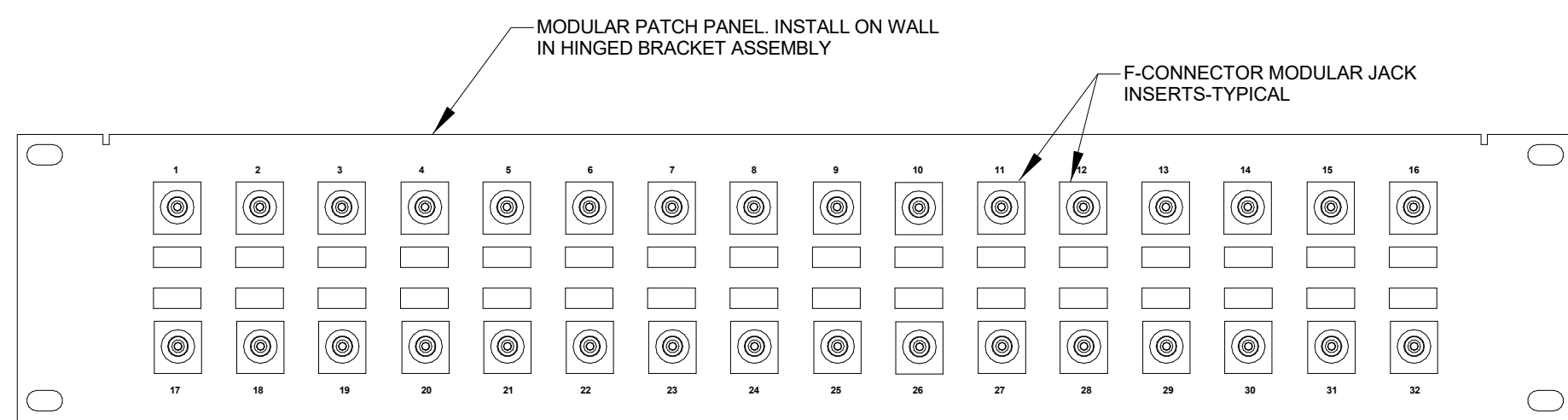
1 RISER DIAGRAM

T600



2 FACEPLATE TYPES DETAIL

T600



GENERAL NOTES:

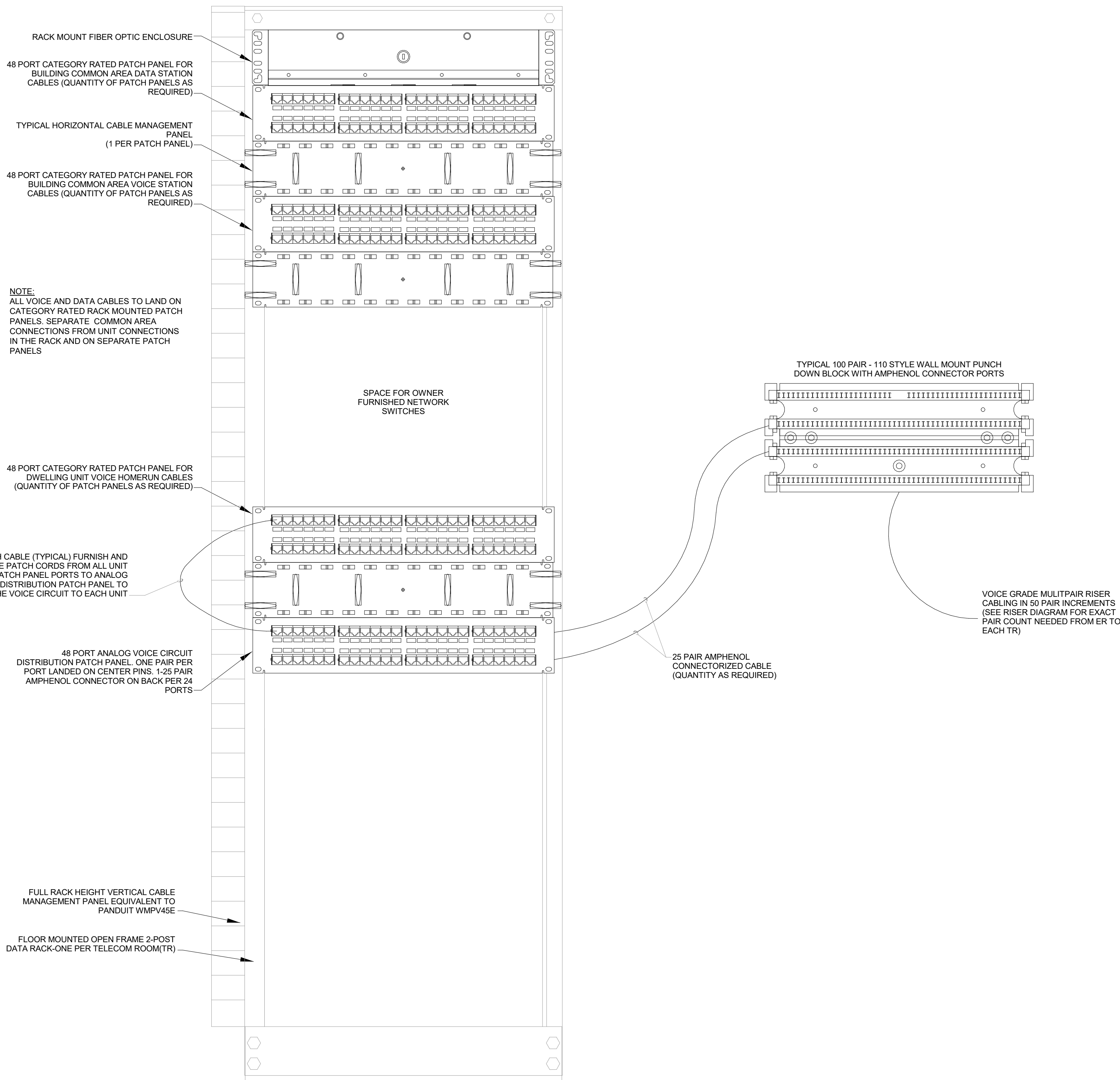
- A. TERMINATE ALL STATION COAXIAL CABLES WITH RADIAL CRIMP STYLE F-CONNECTORS. LAND ON PATCH PANEL AND LABEL WITH UNIT NUMBER.
- B. TERMINATE, LABEL AND COIL RG11 RISER COAXIAL CABLES ON WALL ADJACENT TO PATCH PANEL.

3 TV PATCH PANEL

T600

GENERAL NOTES:

- A. TERMINATE DATA JACKS TO T568A PINOUT CONFIGURATION.
- B. ALL FACEPLATES SHALL BE CLEARLY LABELED INDICATING ROOM NUMBER. REVIEW LABELING SCHEME WITH OWNERS REPRESENTATIVE PRIOR TO PROCEEDING.



4 DATA PATCH PANEL AND WALL RACK DETAIL

T600

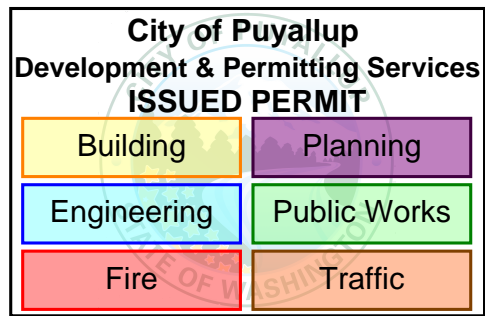
I HEREBY CERTIFY THAT THIS PLAN SPECIFICATION OR REPORT WAS PREPARED BY ME OR UNDER MY DIRECT SUPERVISION AND THAT I AM A DULY LICENSED PROFESSIONAL ENGINEER UNDER THE LAWS OF THE STATE OF MINNESOTA
DATE: - REG. #:

SIGNED:

DRAWN BY: J. VERDICK
CHECKED BY: P. MYERS
DATE: -
JOB NUMBER:
FILE NAME: REVIT 2022

REVISIONS

1	6-2-23	PERMIT SET
2	7-20-23	WiFi LOCATION UPDATE
3	10-6-23	PERMIT SET/DOH SUBMITTAL
4	4-4-24	COM. AREA DATA OUT. CHANGE
5	11-27-24	PROGRESS SET



WESLEY BRADLEY PARK 2
PHASE 2 - CARE CENTER
707 39TH AVENUE SOUTHEAST
PUYALLUP, WASHINGTON 98374

TECHNOLOGY DETAILS

T600

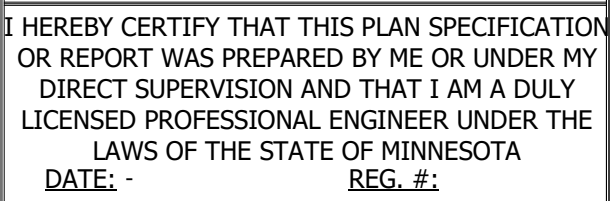
CCTV SCHEDULE-WESLEY HOMES-BRADLEY PARK PHASE 2-CARE CENTER - 11-24-27 PROGRESS SET					
Camera #	Location	Resolution	Manufacturer	Model	Notes
1	Spa exterior door				
2	Pool exterior door				
3	Staff patio door				
4	Stair B LL exterior door				
5	N exterior door				
6	Link Door				
7	Elevator Lobby				
8	Vestibule				
9	Outdoor Drive up area				Outdoor camera
10	Med Room 1163				
11	Dining Exterior Door				
12	Reception Lobby				
13	Med Room 1126				
14	SE Exterior Door				
15	Stair 1 1st Floor Corridor door				
16	Dayroom Exterior door				

Pixels Per Foot (PPF)	
30	Visual
45	License plate
100	Facial

Class	Resolution	Pixels
VGA	640x480	307200
HDTV 720p	1280x720	921600
1.3 MP	1280x1024	1310720
HDTV 1080p	1920x1080	2073600
2MP	1600x1200	1920000
3MP	2048x1536	3145728
5MP	2592x1944	5038848
10MP	3648x2752	10039296

DOOR SECURITY SCHEDULE-WESLEY HOMES-BRADLEY PARK PHASE 2-CARE CENTER - 11-27-24 PROGRESS SET														
Door	Description	Keypad/ Prox reader	Proximity Reader	Motion REX	Hardware REX	Door Contact	Electric Strike	Intercom	Electric Lock	Transfer Hinge	Mag Lock	Mag Lock	Fire Release	Installation Note
0108	Pool Door		1	1		1			1	1				
0108BE	Spa to outdoor fitness		1		1	1			1	1				
0108E	Pool to outdoor fitness		1		1	1			1	1				
0119E	Staff Patio		1		1	1			1	1				
1100	Vestibule	1	1		2	2		1	2	2				4
1114E	SE exterior door	2				1			1	1	1		1	4
1126	Med Room		1		1	1	1		1	1				
1129E	Dayroom	2				1			1	1	1		1	4
1133E	Dining Room			1		1								3
1134	Therapy		1		1	1								
1146	Elevator Lobby		1		1	1	1		1	1				
1163	Med Room		1		1	1	1		1	1				
1168E	N exterior door	2				1			1	1	1		1	4
E100	Link Door	2				2			2	2	1		1	1, 4
ST-CC0E	CC Stair B lower level exterior		1		1	1			1	1				
ST-CC1	CC Stair level 1 N corridor	2				1					1		1	4

Installation notes	
Note 1	Integrate reader controls with motorized door operator. Door operator to release strike when exit paddle used. Enter paddle disabled until after a valid fob read.
Note 2	Wire push button at reception desk to release door lock
Note 3	Exit only door. Configure access control system to report door forced and door propped events.
Note 4	Door will have Wanderguard. Coordinate reader controls with Wanderguard vendor installation.
Note 5	
Note 6	



DRAWN BY: J. VERDICK
CHECKED BY: P. MYERS
DATE: -
JOB NUMBER:
FILE NAME: REVIT 2022

[illegible]

City of Puyallup Development & Permitting Services ISSUED PERMIT	
Building	Planning
Engineering	Public Works
Fire	Traffic

WESLEY BRADLEY PARK 2
PHASE 2 - CARE CENTER
707 39TH AVENUE SOUTHEAST
PUYALLUP WASHINGTON 98374