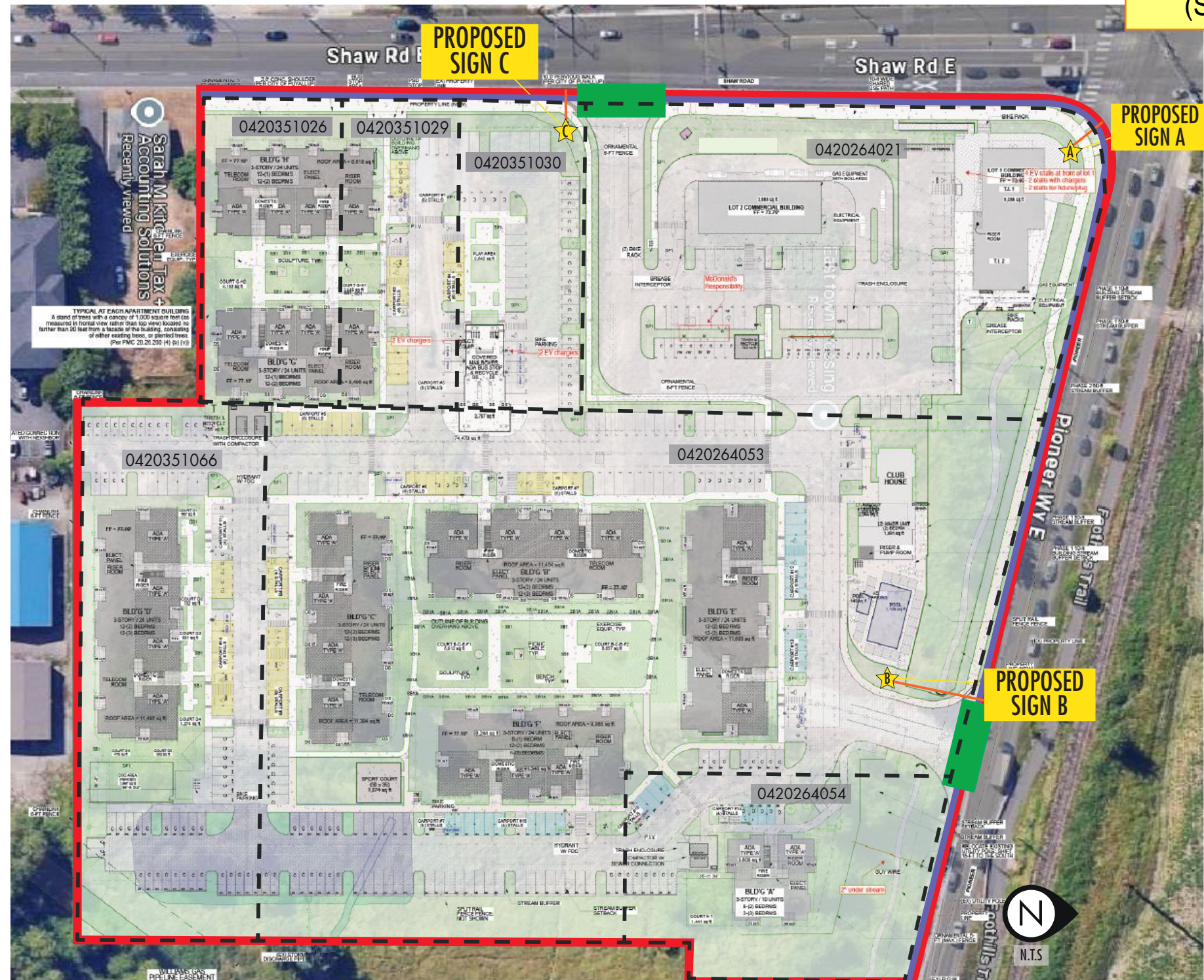


☎ (253) 314 5623  
📱 [www.clearwaysigns.com](http://www.clearwaysigns.com)



Sign Setback from nearest street = A: 27.8' | B: 47.15' | C: 22.6'  
 Property Frontage = 1,374'  
 Sign to be installed facing corner of Shaw Rd E and Pioneer Way and  
 perpendicular to Shaw Rd E and Pioneer Way E  
 Two (2) Driveways

Job Order:	Date created: <b>June 27, 2025</b>	Date revised:
Sign Type: <b>Monument Signs</b>	Approval:	
Size:		



SIGN DETAILS (SIGN C)

Monument Sign  
Aluminum Cabinet, painted cream  
Push Thru Letters and Logo  
LED Cabinet: 1" Black Retainer; 8" Black Return  
Changeable Acrylic Panel  
Double Sided  
Qty: 1

The proposed area of Sign C (30 square feet) exceeds the permitted maximum area of monument signs in a residential development. The parcel where this sign is proposed (0420351030) is within the RM-20 zone. The maximum permitted sign area for a monument sign in a residential development in an RS or RM zone is 25 square feet. Please correct the proposed area of Sign C.

Per PMC 20.60.040(1)(b), Special provisions for the RS and RM zones:

(b) Residential Development Signs. Residential developments of four or more dwelling units are permitted one monument or facade sign for each public street frontage adjacent to the project (or for each entrance in the case of a subdivision project). Maximum sign area for each sign shall not exceed 25 square feet in area.

See "SIGN PERMIT SUBMITTAL DOCUMENTS", sheet 2 of 3.

Approval of submitted plans is not an approval of omissions or oversights by this office or non compliance with any applicable regulations of local government. The contractor is responsible for making sure that the building complies with all applicable codes and regulations of the local government.

The approved construction plans, documents, and all engineering must be posted on the job at all inspections in a visible and readily accessible location.

Full sized legible color plans are required to be provided by the permittee on site for inspection.

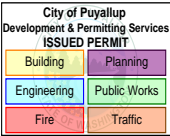
CMYK= 70, 50, 60, 35

CMYK= 31, 22, 29, 0

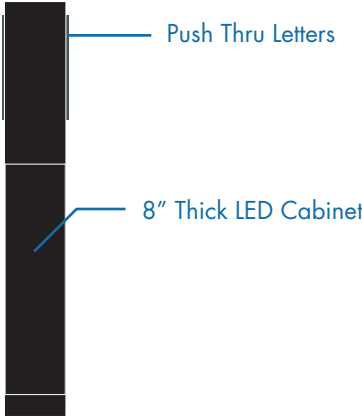
CMYK= 7, 7, 18, 0

CMYK = 23, 50, 75, 0

Black



FRONT VIEW (SCALE 1:25)  
SIGN AREA: 24.4 SQ. FT.



SIDE VIEW (SCALE 1:25)

MATERIAL/COLOR CALLOUT



- A1

ALUMINUM CABINET, PAINTED CREAM
- B1

CHANGEABLE ACRYLIC FACE WITH PRINTED VINYL
- L1

WHITE LED
- R1

ALUMINUM RETURN, PAINTED CREAM

S1

ACRYLIC PUSH THRU LETTERS/LOGO

T1

LED CABINET BLACK RETAINER

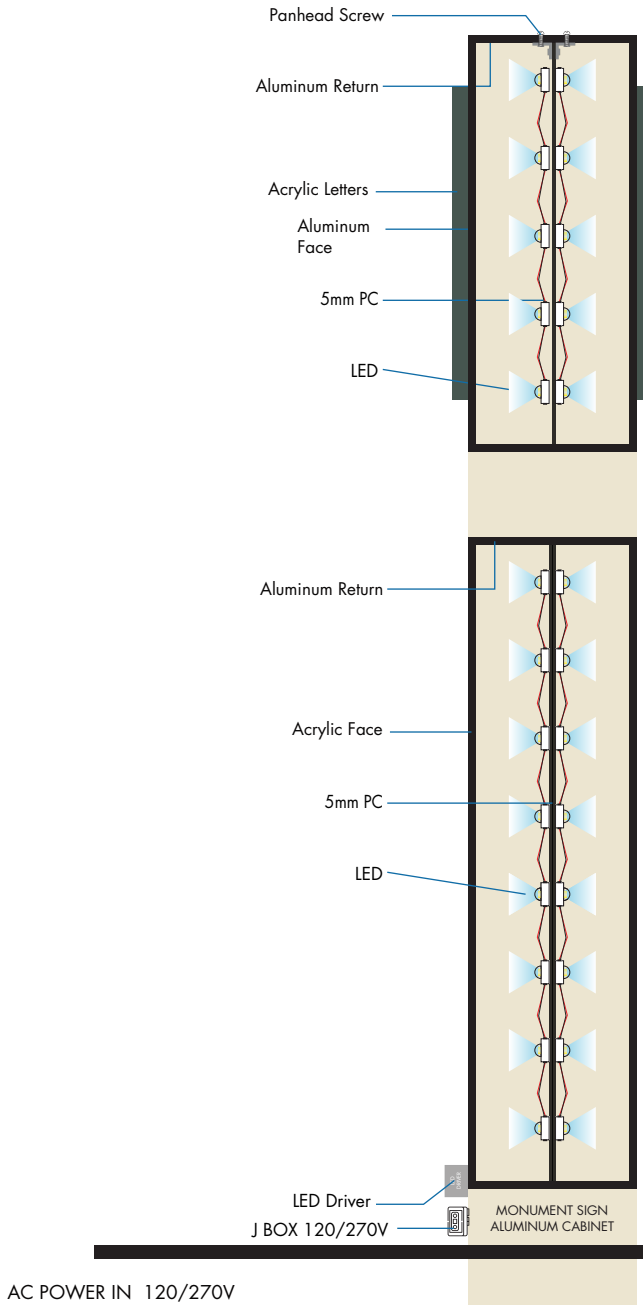
R2

ALUMINUM RETURN, PAINTED BLACK

GENERAL NOTES

- INSTALLATION OF THIS SIGN SHALL CONFORM TO THE REQUIREMENTS OF ARTICLE 600 OF NEC, UI48, UL 2161 COMPLIANT AND/OR OTHER APPLICABLE LOCAL CODES.
- BRANCH CIRCUIT:
  - ALL BRANCH CIRCUITS FOR SIGNS MUST BE TOTALLY DEDICATED TO SIGNS (INCLUDING DEDICATED GROUND AND DEDICATED NEUTRALPER CIRCUIT).
  - SIGN CIRCUITS MUST NOT BE SHARED.
  - PROPERTY SIZED GROUND WIRE THAT CAN BE TRACKED TO THE BREAKER PANEL MUST BE PROVIDED.
- UL AND DATA LABELS REQUIRED.
- SIGNS ARE INTENDED TO BE INSTALLED IN ACCORDANCE WITH THE INSTALLATION INSTRUCTIONS PROVIDED WITH THE SIGN SECTIONS AND THE NEC. AUTHORITIES HAVING JURISDICTION ARE RESPONSIBLE FOR THE ULTIMATE DECISION TO APPROVE AN INSTALLATION.

ATTACHMENT DETAIL



PRSG20250878  
(Sign C)

Separate Electrical Permit is required with the Washington State Department of Labor & Industries.  
<https://lni.wa.gov/licensing-permits/electrical/electrical-permits-fees-and-inspections>  
or call for Licensing Information:  
1-800-647-0982



(253) 314 5623  
www.clearwaysigns.com

East Town Crossing Apartments\_Puyallup\_Sign Package

Job Order:	Date created: July 23, 2025	Date revised:
Sign Type:	Monument Sign	
Size:	65" W x 54" H (Scale 1:25)	

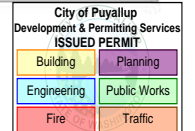
The design depicted herein is the sole property of Clearway Signs, and may not be reproduced in whole or in part without prior written consent. Actual color, letter sizes and graphic layout may vary slightly due to the properties of materials. Colors may vary depending on media substrate. This sign is intended to be installed in accordance with Article 600 of the National Electrical Code and/or other applicable local codes.

## YJ SIGN INC.

P.O. Box 802050 Santa Clarita, CA 91380 • (677) 600-9444 • info@yjinc.com

Sign Design Based On 2021 IBC

Authorization Number: JTS\_143325  
Project: East Town Crossing - Monument - Sign Type 4 - Option 1  
Job Location: 2902 Pioneer Wy E  
Puyallup, WA



## INPUT DATA

Exposure category (B, C or D)  
Risk Category  
Ultimate Design Windspeed  
Topographic factor  
Height of the sign  
Vertical dimension (for wall,  $s = h$ )  
Horizontal dimension  
Dimension of return corner

$V_{50}$  = C  
= II  
= 100.00 MPH  
 $K_z$  = 1.00 Flat  
h = 5.00 FT  
s = 5.00 FT  
B = 6.00 FT  
L = 1.00 FT

## ANALYSIS

## Velocity pressure

$$q_z = 0.00256 K_z K_{zt} K_d V^2$$

where:

 $q_z$  = velocity pressure at height  $h$ . (Eq. 29.3-1, page 249) $K_z$  = velocity pressure exposure coefficientevaluated at height above ground level,  $h$ . (Tab. 29.3-1, page 251) $K_d$  = wind directionality factor. (Tab. 26.6-1, page 194) $K_{zt}$  = Ground Elevation Factor. (Tab. 26.9-1)

## Wind Force Case A: resultant force through geometric center

Max horizontal wind pressure  $w_p = q_z G C_f$  $G$  = gust effect factor. (Sec. 26.11-1, page 269) $C_f$  = net force coefficient. (Fig. 29.3-1, page 323) $A_g = B \times s$  = the gross area

Estimated sign cabinet weight:

= 23 PSF  
= 0.85  
= 1.44  
= 30.00 FT<sup>2</sup>  
= 180 LBS.

## DESIGN SUMMARY

Allowable Stress Design Wind Factor

Design Wind Pressure

Design Windforce, F

Moment Arm

Design Moment

= 0.60  
0.6 x p = 13.60 PSF  
13.60 x  $A_g$  = 0.41 KIPS  
= 2.75 FT  
F x Moment Arm = 1.12 KIP-FT

## FOOTING DESIGN (Non Constrained)

Diameter

Soil Pressure

S1

A

EMBED.

= 1.50 FT  
= 150.00 PSF/FT  
= 345.00 PSF  
= 1.85 FT  
= 3.45 FT

DIAMETER = 18" DEPTH = 3' - 6"

## POLE DESIGN

Name  
2 1/2" DIA., t=0.203

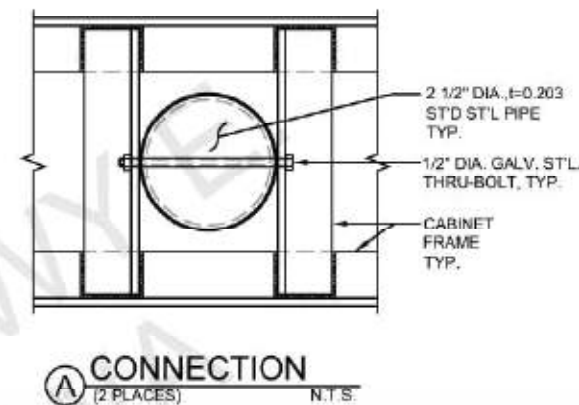
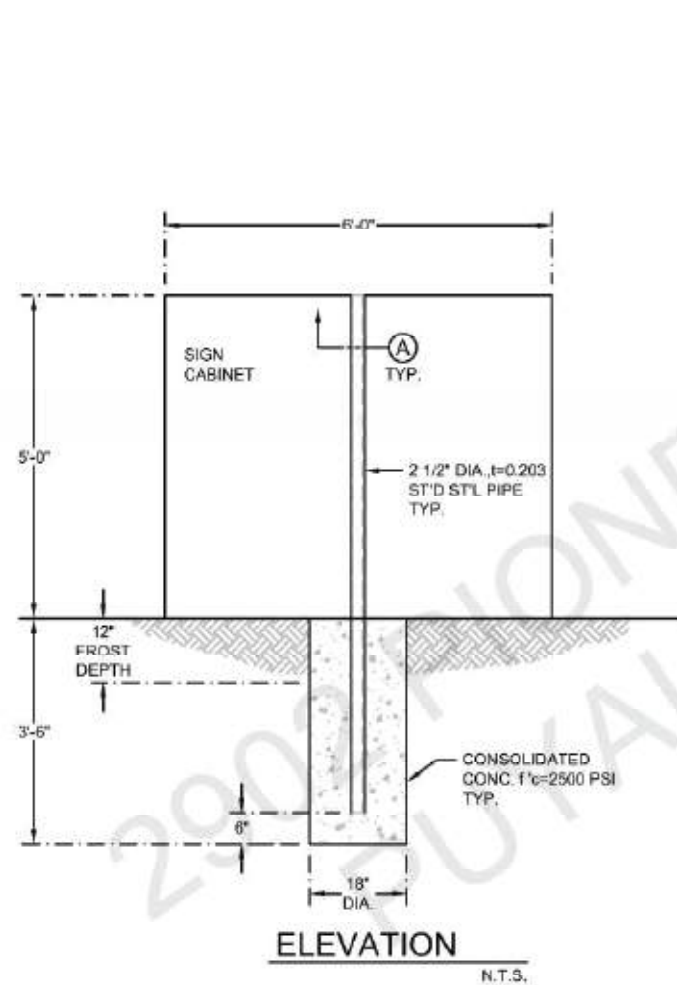
Design Type  
Standard Steel Round

Material  
Std S11 - A53 Gr. B

## Parameter Checks

Design  
Sreq  
0.64

Spole  
1.01 OK!



ELEVATION

N.T.S.

## NOTES:

## GENERAL:

- SIGN DESIGN IS BASED ON ADEQUATE EXISTING SUPPORT ELEMENTS.
- PROVIDE ISOLATION OF DISSIMILAR MATERIALS.
- COAT ALUMINUM IN CONTACT WITH CONCRETE WITH ZINC RICH PAINT.
- PROVIDE FULLY WELDED END CAPS AT EXPOSED OPEN ENDS OF STEEL / ALUM. TUBES. MATCH THICKNESS LIKE FOR LIKE.
- SLOPE TOP OF EXPOSED FOOTING AWAY FROM DIRECT BURIAL POSTS.
- ALL EXPOSED STEEL TO BE PRIMED & PAINTED (POWDER COAT AS AN OPTION) OR ALTERNATIVELY USE GALVANIZED STEEL.

## STEEL:

- DESIGN AND FABRICATION ACCORDING TO 2021 IBC
- PLATE, ANGLE, CHANNEL TEE: ASTM A36
- WIDE FLANGE: ASTM A992
- ROUND PIPE: ASTM A53 GRADE B OR EQUIVALENT.
- HSS ROUND, SQUARE, AND RECTANGULAR TUBE: ASTM A500 GRADE B OR EQUIVALENT.
- STAINLESS STEEL ROUND, SQUARE, AND RECTANGULAR TUBE: ASTM A276 T304 OR EQUIVALENT.
- ALL ANCHORS BOLTS SHALL BE: ASTM F1554 OR ASTM F693 T304 U.N.O.
- ALL STEEL MACHINED BOLTS SHALL BE: ASTM A307, A325 OR A449 U.N.O.
- ALL STAINLESS STEEL MACHINED BOLTS SHALL BE: ASTM F593 T304 U.N.O.
- ALL BOLTS TO BE ZINC COATED: ASTM B633
- DEFORMED REINFORCING REBAR: ASTM A615 GRADE 60.

## STEEL

- DESIGN AND FABRICATION ACCORDING TO AWS D1.1, D1.3 & D1.6
- AWS CERTIFICATION REQUIRED FOR ALL STRUCTURAL WELDERS.

## ALUMINUM:

- DESIGN AND FABRICATION ACCORDING TO 2020 ALUM. DESIGN MANUAL
- PLATES, ANGLES, CHANNELS, TEE, AND SQUARE TUBING: ALUMINUM
- ALLOY 6061 - T6 WITH 0.098 LBS PER CUBIC INCH.

## ALUMINUM

- DESIGN AND FABRICATION ACCORDING TO AWS D1.2. ALL WELDING IN ACCORDANCE WITH THE LATEST EDITION OF THE AWS A.5.10.
- FILLER ALLOYS PER TABLES M.9.1 & M.9.2 OF 2020 ALUMINUM DESIGN MANUAL.

## WELDING:

- WELD SIZE (LEG LENGTH) SHALL BE EQUAL TO THE THICKNESS OF THE THINNEST MEMBER AT THE JOINT, UNLESS NOTED OTHERWISE.
- E70 XX ELECTRODE FOR SMAW PROCESS.
- E70S XX ELECTRODE FOR GMAW PROCESS.
- E77 XX ELECTRODE FOR GTAW PROCESS.
- E70T XX ELECTRODE FOR FCAW PROCESS.
- ALL WELDS SHALL BE MADE WITH A FILLER METAL THAT CAN PRODUCE WELDS THAT HAVE A MINIMUM CHARPY V-NOTCH TOUGHNESS OF 20FT-LB AT ZERO 0° AS DETERMINED BY THE APPROPRIATE AWS A5 CLASSIFICATION TEST METHOD OR MFG'S. CERTIFICATION.

## ANCHORS:

- BRAND NAME APPROVED ANCHORS SPECIFIED ON PLANS MAY BE SUBSTITUTED BY APPROVED EQUAL.

## CONCRETE:

- DESIGN AND CONSTRUCTION ACCORDING TO ACI 318-19
- COMPRESSIVE STRENGTH AT 28 DAYS,  $f'c = 2500$  PSI MINIMUM.
- CEMENT TYPE II OR IV. W/C RATIO 0.45 BY WEIGHT FOR PIER AND CAISSON
- FOOTINGS CONCRETE MUST BE POURED AGAINST UNDISTURBED EARTH.
- MAINTAIN A MINIMUM 3" CONCRETE COVER OVER ALL EMBEDDED STEEL.

## SOIL:

- LATERAL SOIL BEARING PER IBC CLASS 4 TABLE 1806.2 (150 PSF/FT), MODIFIED PER SECTION 1806.3.4.

PRSG20250878  
(Sign C)



DATE SIGNED: 06/27/2025

NOTICE: IT IS A VIOLATION OF THE LAW FOR ANY PERSON, UNLESS ACTING UNDER THE DIRECTION OF A LICENSED PROFESSIONAL, TO ALTER AN ITEM IN ANY WAY. IF AN ITEM BEARING THE SEAL OF A LICENSED PROFESSIONAL IS ALTERED, THE ALTERING LICENSED PROFESSIONAL SHALL AFFIX TO THEIR ITEM THEIR SEAL AND THE NOTATION "ALTERED BY" FOLLOWED BY THEIR SIGNATURE AND THE DATE OF SUCH ALTERATION, AND A SPECIFIC DESCRIPTION OF THE ALTERATION.

www.yjinc.com  
P.O. BOX 802050  
SANTA CLARITA, CA. 91380  
TEL. (661)259-0700 FAX. (661)259-0900

SHEET TITLE:

**EAST TOWN CROSSING**  
**SIGN TYPE 4-OPTION 1**

DRN BY: R.G. DATE LAST REVISED: Jun 27, 2025 PROJECT JOB #: JTS\_143325 East Town Crossing, Pioneer Wy E, Puyallup, WA.dwg  
CHK BY: T.J. PROJ. START DATE: June 26, 2025 REV. NO. REV. DATE REVISED BY  
REV BY: T.J. SCALE: AS SHOWN 1  
PLOTTED BY: Gabriela DN 6/27/2025 3:02:37 PM 2

PROJECT LOCATION: EAST TOWN CROSSING  
2902 PIONEER WY E.  
PUYALLUP, WA

SHEET #  
1 OF 1