

DOCUMENT CONTROL PROCESSING FORM

File Number:	DESN0063 Item No. 02			
Document Date:	07/18/25			
Document Type:	Plans			
DCPF Author:	Kevin W.			
Subject:	RFC: Pioneer Ramp TCP's			
To (Company):	WSDOT	To (Individual):	B Morris, D Russu, J Tran	
From (Company):	Jacobs	From (Individual):	Eric Crowe	
Additional Subject Information and/or Keywords		Schedule Activity:	N/A	
RFP - 2.22				
<div style="text-align: right;"> Yes No </div>				
Distribution:		Attachments <div style="display: inline-block; width: 40px; height: 20px; border: 1px solid black; margin: 0 5px;"></div> <div style="display: inline-block; width: 40px; height: 20px; border: 1px solid black; margin: 0 5px;"></div>		
XE3476 - SR167 RFC Distribution		Notes:		
XE3476 - SR167 WSDOT Design Review				
XE3476 - Gatekeeper				
0				
0				

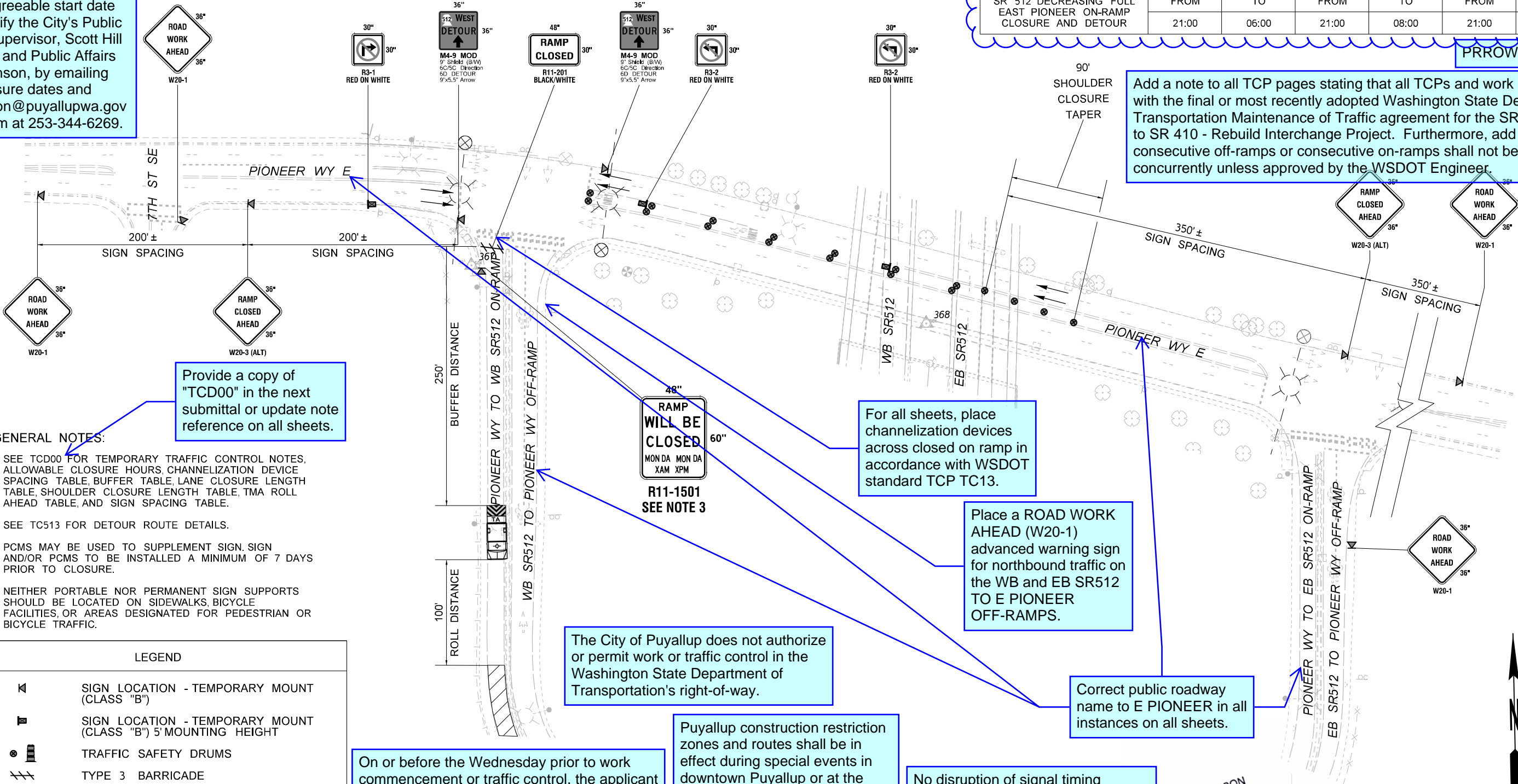
At least 72-hour advanced notice to the City is required prior to setting up traffic control and starting work. First, notify City Inspector, Michael Rosenau, at 253-344-6753. Upon scheduling an agreeable start date with Michael, notify the City's Public Works Streets Supervisor, Scott Hill at 253-841-5409 and Public Affairs Officer, Eric Johnson, by emailing him the road closure dates and times at EJohnson@puyallupwa.gov and by calling him at 253-344-6269.

Allowed closure times listed in this table do not match the table from the WSDOT Maintenance of Traffic (MoT), Section 2.22.4.3.3.1. Please update table on both TCPs to match the approved MoT tables. Add a note to the table indicating how many times the closure may be implemented per the MoT. Moreover, include the Extended Weekend Ramp Closure tables with a note on how many times the closure may be implemented per the MoT.

SR 512 RAMP CLOSURE TO OR FROM EAST PIONEER						
ALLOWABLE CLOSURE TIMES SHOWN IN 24-HOUR FORMAT	SUNDAY NIGHT TO FRIDAY MORNING		FRIDAY NIGHT TO SATURDAY MORNING		SATURDAY NIGHT TO SUNDAY MORNING	
SR 512 DECREASING FULL EAST PIONEER ON-RAMP CLOSURE AND DETOUR	FROM	TO	FROM	TO	FROM	TO
	21:00	06:00	21:00	08:00	21:00	09:00

PRROW20251149

Add a note to all TCP pages stating that all TCPs and work shall comply with the final or most recently adopted Washington State Department of Transportation Maintenance of Traffic agreement for the SR 167/SR 161 to SR 410 - Rebuild Interchange Project. Furthermore, add a note that consecutive off-ramps or consecutive on-ramps shall not be closed concurrently unless approved by the WSDOT Engineer.



GENERAL NOTES:

- SEE TCD00 FOR TEMPORARY TRAFFIC CONTROL NOTES, ALLOWABLE CLOSURE HOURS, CHANNELIZATION DEVICE SPACING TABLE, BUFFER TABLE, LANE CLOSURE LENGTH TABLE, SHOULDER CLOSURE LENGTH TABLE, TMA ROLL AHEAD TABLE, AND SIGN SPACING TABLE.
- SEE TC513 FOR DETOUR ROUTE DETAILS.
- PCMS MAY BE USED TO SUPPLEMENT SIGN. SIGN AND/OR PCMS TO BE INSTALLED A MINIMUM OF 7 DAYS PRIOR TO CLOSURE.
- NEITHER PORTABLE NOR PERMANENT SIGN SUPPORTS SHOULD BE LOCATED ON SIDEWALKS, BICYCLE FACILITIES, OR AREAS DESIGNATED FOR PEDESTRIAN OR BICYCLE TRAFFIC.

LEGEND

- SIGN LOCATION - TEMPORARY MOUNT (CLASS "B")
- SIGN LOCATION - TEMPORARY MOUNT (CLASS "B") 5' MOUNTING HEIGHT
- TRAFFIC SAFETY DRUMS
- TYPE 3 BARRICADE
- TRAVEL DIRECTION OF OPEN LANE
- TRANSPORTABLE ATTENUATOR
- WORK AREA

On or before the Wednesday prior to work commencement or traffic control, the applicant shall notify the WSDOT Area 1 Maintenance office of work on a state route (SR) at (360) 357-2600 or at orfeedback@wsdot.wa.gov. The applicant shall complete the Traffic Management Center (TMC) requirements.

The City of Puyallup does not authorize or permit work or traffic control in the Washington State Department of Transportation's right-of-way.

Puyallup construction restriction zones and routes shall be in effect during special events in downtown Puyallup or at the Washington State Fair. No work is allowed in the public right-of-way as defined by the Puyallup "Construction Restriction Zone & Routes Map."

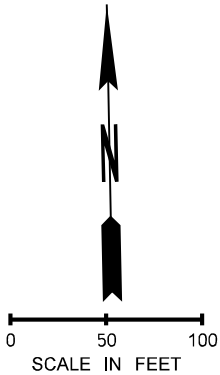
For all sheets, place channelization devices across closed on ramp in accordance with WSDOT standard TCP TC13.

Place a ROAD WORK AHEAD (W20-1) advanced warning sign for northbound traffic on the WB and EB SR512 TO E PIONEER OFF-RAMPS.

Correct public roadway name to E PIONEER in all instances on all sheets.

No disruption of signal timing allowed at signalized intersection unless the traffic control plan depicts a uniformed police officer at the intersection or until authorized by a City of Puyallup or WSDOT official.

ATKINSON
July 18 2025
RELEASED FOR CONSTRUCTION



FILE NAME	c:\pw_workdir\jacobs-america\id0247120XE3476_PS_TC401.dgn	REGION NO.	10	STATE	WASH	FED.AID PROJ.NO.	0167(059)			SR 167 SR 161 TO SR 410 REBUILD INTERCHANGE	PLAN REF NO	TC401
TIME	9:07:42 AM	JOB NUMBER				LOCATION NO.					SHEET	
DATE	7/17/2025	CONTRACT NO.	XE3476								OF	
PLOTTED BY	marlon.lauriano										SHEETS	
DESIGNED BY	G. ROBINSON											
ENTERED BY	G. ROBINSON											
CHECKED BY	R. MILLER	REV 0 - RELEASED FOR CONSTRUCTION	07/17/25									
PROJ. ENGR.	T. SLIMAK	REV A - PRELIMINARY REVIEW	06/20/25									
REGIONAL ADM.	S. ROARK	REVISION										

RAMP CLOSURE
PIONEER WY E TO WB SR512 ON-RAMP

SR 512 RAMP CLOSURE TO OR FROM EAST PIONEER						
ALLOWABLE CLOSURE TIMES SHOWN IN 24-HOUR FORMAT	SUNDAY NIGHT TO FRIDAY MORNING		FRIDAY NIGHT TO SATURDAY MORNING		SATURDAY NIGHT TO SUNDAY MORNING	
SR 512 INCREASING FULL EAST PIONEER ON-RAMP CLOSURE AND DETOUR	FROM	TO	FROM	TO	FROM	TO
	21:00	05:00	21:00	08:00	21:00	09:00

PRROW20251149

At least 72-hour advanced notice to the City is required prior to setting up traffic control and starting work. First, notify City Inspector, Michael Rosenau, at 253-344-6753. Upon scheduling an agreeable start date with Michael, notify the City's Public Works Streets Supervisor, Scott Hill at 253-841-5409 and Public Affairs Officer, Eric Johnson, by emailing him the road closure dates and times at EJohnson@puyallupwa.gov and by calling him at 253-344-6269.

- GENERAL NOTES:
- SEE TCD00 FOR TEMPORARY TRAFFIC CONTROL NOTES, ALLOWABLE CLOSURE HOURS, CHANNELIZATION DEVICE SPACING TABLE, BUFFER TABLE, LANE CLOSURE LENGTH TABLE, SHOULDER CLOSURE LENGTH TABLE, TMA ROLL AHEAD TABLE, AND SIGN SPACING TABLE.
 - SEE TC514 FOR DETOUR ROUTE DETAILS.
 - PCMS MAY BE USED TO SUPPLEMENT SIGN. SIGN AND/OR PCMS TO BE INSTALLED A MINIMUM OF 7 DAYS PRIOR TO CLOSURE.
 - NEITHER PORTABLE NOR PERMANENT SIGN SUPPORTS SHOULD BE LOCATED ON SIDEWALKS, BICYCLE FACILITIES, OR AREAS DESIGNATED FOR PEDESTRIAN OR BICYCLE TRAFFIC.

LEGEND

SIGN LOCATION - TEMPORARY MOUNT (CLASS "B")

SIGN LOCATION - TEMPORARY MOUNT (CLASS "B") 5' MOUNTING HEIGHT

TRAFFIC SAFETY DRUMS

TYPE 3 BARRICADE

TRAVEL DIRECTION OF OPEN LANE

TRANSPORTABLE ATTENUATOR

WORK AREA

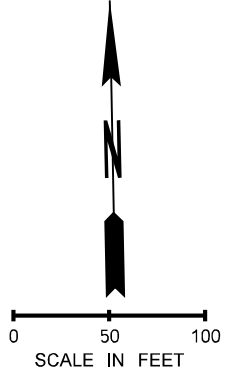
The City of Puyallup does not authorize or permit work in the Washington State Department of Transportation's right-of-way.




On or before the Wednesday prior to work commencement or traffic control, the applicant shall notify the WSDOT Area 1 Maintenance office of work on a state route (SR) at (360) 357-2600 or at orfeedback@wsdot.wa.gov. The applicant shall complete the Traffic Management Center (TMC) requirements.

Puyallup construction restriction zones and routes shall be in effect during special events in downtown Puyallup or at the Washington State Fair. No work is allowed in the public right-of-way as defined by the Puyallup "Construction Restriction Zone & Routes Map."

No disruption of signal timing allowed at signalized intersection unless the traffic control plan depicts a uniformed police officer at the intersection or until authorized by a City of Puyallup or WSDOT official.

ATKINSON
July 18 2025
RELEASED FOR CONSTRUCTION



FILE NAME c:\pw_workdir\jacobs-america\id0247120\XE3476_PS_TC402.dgn																SR 167 SR 161 TO SR 410 REBUILD INTERCHANGE		PLAN REF NO	
TIME 9:12:36 AM						REGION NO. STATE		FED.AID PROJ.NO.										TC402	
DATE 7/17/2025						10 WASH		0167(059)											
PLOTTED BY marlon.lauriano						JOB NUMBER													
DESIGNED BY G. ROBINSON								CONTRACT NO.		LOCATION NO.				RAMP CLOSURE PIONEER WY E TO EB SR512 ON-RAMP		SHEET			
ENTERED BY G. ROBINSON																OF			
CHECKED BY R. MILLER		REV 0 - RELEASED FOR CONSTRUCTION		07/17/25				XE3476								SHEETS			
PROJ. ENGR. T. SLIMAK		REV A - PRELIMINARY REVIEW		06/20/25															
REGIONAL ADM. S. ROARK		REVISION		DATE		BY													

SIGN LEGEND (THIS SHEET ONLY):



1



2



3

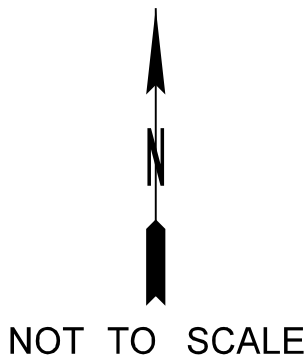
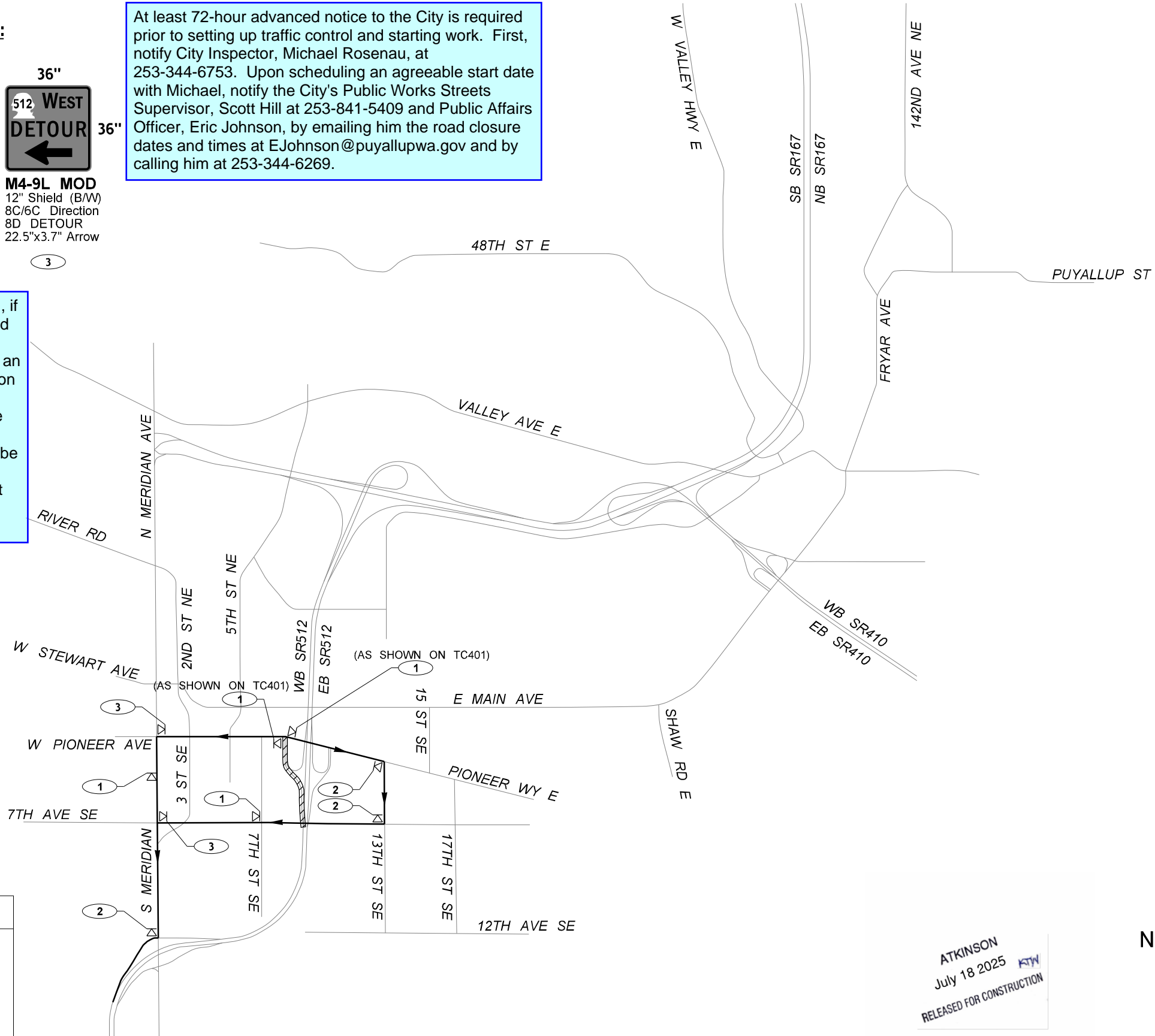
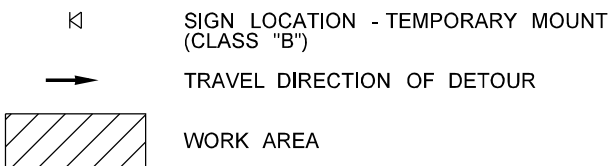
At least 72-hour advanced notice to the City is required prior to setting up traffic control and starting work. First, notify City Inspector, Michael Rosenau, at 253-344-6753. Upon scheduling an agreeable start date with Michael, notify the City's Public Works Streets Supervisor, Scott Hill at 253-841-5409 and Public Affairs Officer, Eric Johnson, by emailing him the road closure dates and times at EJohnson@puyallupwa.gov and by calling him at 253-344-6269.

In accordance with the Maintenance of Transportation, if two or more ramps within the Project limits are planned to be closed concurrently, and the closed ramps have overlapping detours, the Design-Builder shall conduct an analysis of the detour routes in accordance with Section 2.21, *Traffic Operations*, and submit it to the WSDOT Engineer. If overlapping detours are determined to be unacceptable by the WSDOT Engineer, then only one ramp closure will be allowed. Closure durations shall be reduced based on the results of this analysis. Consecutive ramp closures will not be allowed, except where specifically allowed in this Section or with prior written approval by the WSDOT Engineer.

GENERAL NOTES:

- SEE TCD00 FOR TEMPORARY TRAFFIC CONTROL NOTES, ALLOWABLE CLOSURE HOURS, CHANNELIZATION DEVICE SPACING TABLE, BUFFER TABLE, LANE CLOSURE LENGTH TABLE, SHOULDER CLOSURE LENGTH TABLE, TMA ROLL AHEAD TABLE, AND SIGN SPACING TABLE.
- SEE TC401 FOR RAMP CLOSURE DETAIL.
- COORDINATE WITH IMPACTED LOCAL AGENCIES PRIOR TO IMPLEMENTATION OF DETOUR.

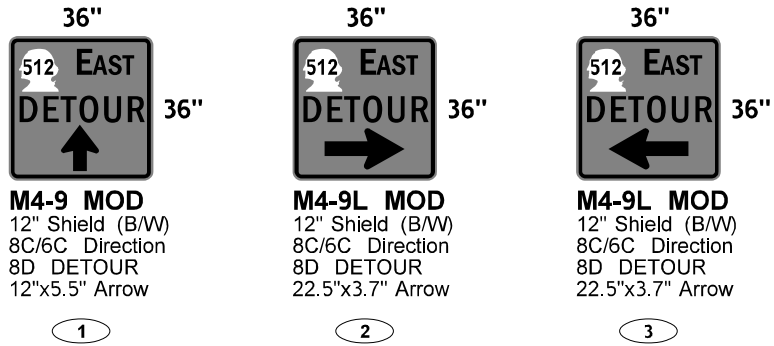
LEGEND



ATKINSON
July 18 2025
RELEASED FOR CONSTRUCTION

FILE NAME c:\pw_workdir\jacobs-america\id0247120\XE3476_PS_TC513.dgn																																																																																																																																																																																																																																																																																																																																																																																																																																																																																																																																																																																																								
--	--	--	--	--	--	--	--	--	--	--	--	--	--	--	--	--	--	--	--	--	--	--	--	--	--	--	--	--	--	--	--	--	--	--	--	--	--	--	--	--	--	--	--	--	--	--	--	--	--	--	--	--	--	--	--	--	--	--	--	--	--	--	--	--	--	--	--	--	--	--	--	--	--	--	--	--	--	--	--	--	--	--	--	--	--	--	--	--	--	--	--	--	--	--	--	--	--	--	--	--	--	--	--	--	--	--	--	--	--	--	--	--	--	--	--	--	--	--	--	--	--	--	--	--	--	--	--	--	--	--	--	--	--	--	--	--	--	--	--	--	--	--	--	--	--	--	--	--	--	--	--	--	--	--	--	--	--	--	--	--	--	--	--	--	--	--	--	--	--	--	--	--	--	--	--	--	--	--	--	--	--	--	--	--	--	--	--	--	--	--	--	--	--	--	--	--	--	--	--	--	--	--	--	--	--	--	--	--	--	--	--	--	--	--	--	--	--	--	--	--	--	--	--	--	--	--	--	--	--	--	--	--	--	--	--	--	--	--	--	--	--	--	--	--	--	--	--	--	--	--	--	--	--	--	--	--	--	--	--	--	--	--	--	--	--	--	--	--	--	--	--	--	--	--	--	--	--	--	--	--	--	--	--	--	--	--	--	--	--	--	--	--	--	--	--	--	--	--	--	--	--	--	--	--	--	--	--	--	--	--	--	--	--	--	--	--	--	--	--	--	--	--	--	--	--	--	--	--	--	--	--	--	--	--	--	--	--	--	--	--	--	--	--	--	--	--	--	--	--	--	--	--	--	--	--	--	--	--	--	--	--	--	--	--	--	--	--	--	--	--	--	--	--	--	--	--	--	--	--	--	--	--	--	--	--	--	--	--	--	--	--	--	--	--	--	--	--	--	--	--	--	--	--	--	--	--	--	--	--	--	--	--	--	--	--	--	--	--	--	--	--	--	--	--	--	--	--	--	--	--	--	--	--	--	--	--	--	--	--	--	--	--	--	--	--	--	--	--	--	--	--	--	--	--	--	--	--	--	--	--	--	--	--	--	--	--	--	--	--	--	--	--	--	--	--	--	--	--	--	--	--	--	--	--	--	--	--	--	--	--	--	--	--	--	--	--	--	--	--	--	--	--	--	--	--	--	--	--	--	--	--	--	--	--	--	--	--	--	--	--	--	--	--	--	--	--	--	--	--	--	--	--	--	--	--	--	--	--	--	--	--	--	--	--	--	--	--	--	--	--	--	--	--	--	--	--	--	--	--	--	--	--	--	--	--	--	--	--	--	--	--	--	--	--	--	--	--	--	--	--	--	--	--	--

SIGN LEGEND (THIS SHEET ONLY):



At least 72-hour advanced notice to the City is required prior to setting up traffic control and starting work. First, notify City Inspector, Michael Rosenau, at 253-344-6753. Upon scheduling an agreeable start date with Michael, notify the City's Public Works Streets Supervisor, Scott Hill at 253-841-5409 and Public Affairs Officer, Eric Johnson, by emailing him the road closure dates and times at EJohnson@puyallupwa.gov and by calling him at 253-344-6269.

PRROW20251149

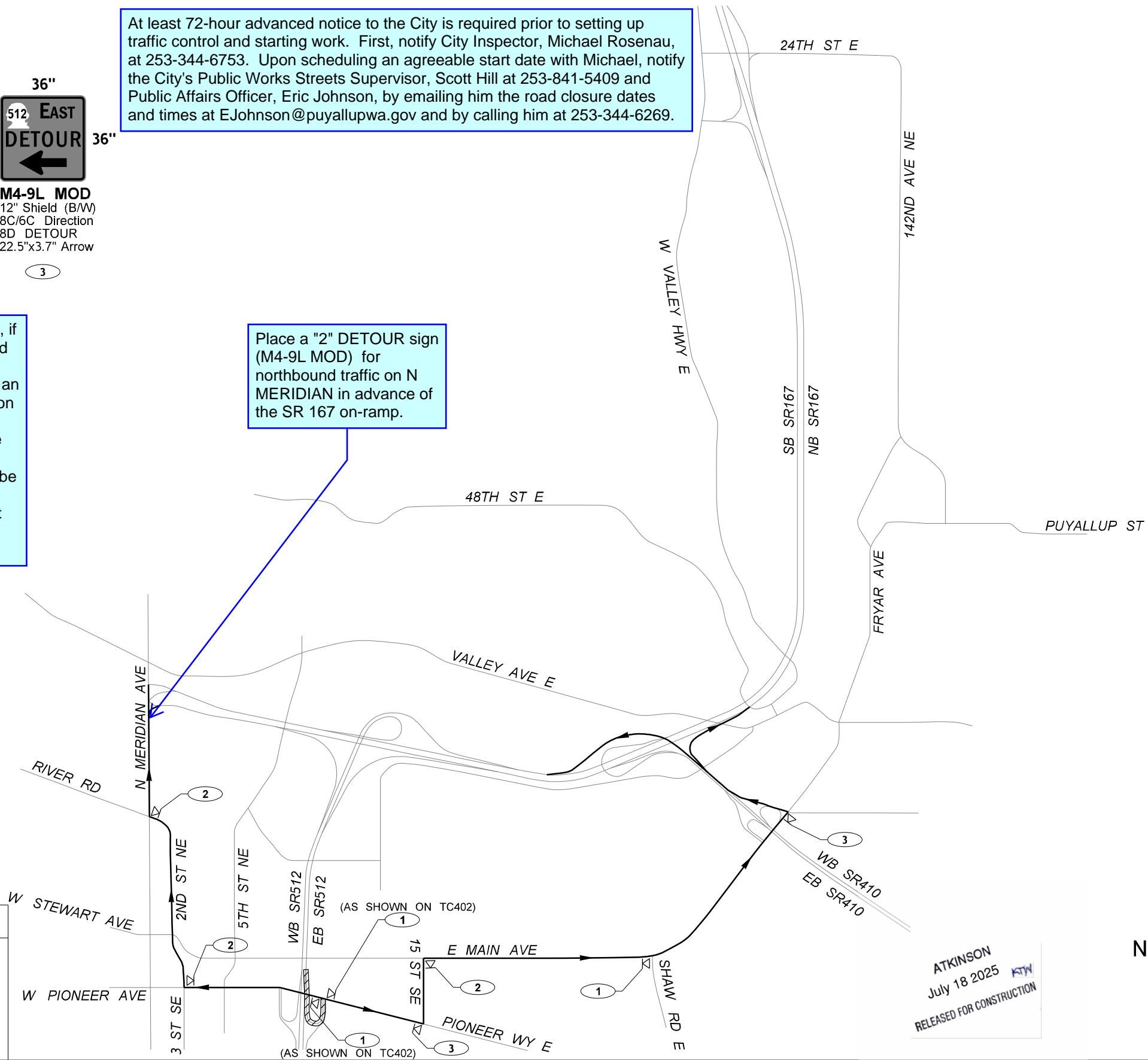
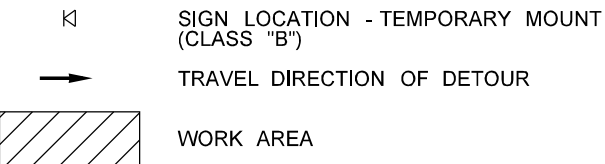
In accordance with the Maintenance of Transportation, if two or more ramps within the Project limits are planned to be closed concurrently, and the closed ramps have overlapping detours, the Design-BUILDER shall conduct an analysis of the detour routes in accordance with Section 2.21, *Traffic Operations*, and submit it to the WSDOT Engineer. If overlapping detours are determined to be unacceptable by the WSDOT Engineer, then only one ramp closure will be allowed. Closure durations shall be reduced based on the results of this analysis. Consecutive ramp closures will not be allowed, except where specifically allowed in this Section or with prior written approval by the WSDOT Engineer.

Place a "2" DETOUR sign (M4-9L MOD) for northbound traffic on N MERIDIAN in advance of the SR 167 on-ramp.

GENERAL NOTES:

- SEE TCD00 FOR TEMPORARY TRAFFIC CONTROL NOTES, ALLOWABLE CLOSURE HOURS, CHANNELIZATION DEVICE SPACING TABLE, BUFFER TABLE, LANE CLOSURE LENGTH TABLE, SHOULDER CLOSURE LENGTH TABLE, TMA ROLL AHEAD TABLE, AND SIGN SPACING TABLE.
- SEE TC402 FOR RAMP CLOSURE DETAIL.
- COORDINATE WITH IMPACTED LOCAL AGENCIES PRIOR TO IMPLEMENTATION OF DETOUR.

LEGEND



NOT TO SCALE

FILE NAME c:\pw_workdir\jacobs-americas\0247120\XE3476_PS_TC514.dgn

TIME 10:46:19 AM

DATE 7/16/2025

PLOTTED BY marlon.lauriano

DESIGNED BY G. ROBINSON

ENTERED BY G. ROBINSON

CHECKED BY R. MILLER

PROJ. ENGR. T. SLIMAK

REGIONAL ADM. S. ROARK

REV 0 - RELEASED FOR CONSTRUCTION

REV A - PRELIMINARY REVIEW

REVISION

07/17/25

06/20/25

DATE

BY

REGION NO.

10

STATE

WASH

JOB NUMBER

CONTRACT NO.

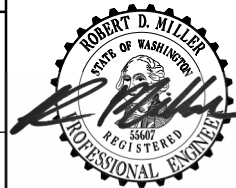
XE3476

BY

FED.AID PROJ.NO.

0167(059)

LOCATION NO.



ATKINSON / Jacobs

SR 167
SR 161 TO SR 410
REBUILD INTERCHANGE

DETOUR ROUTE
PIONEER WY E TO EB SR512 ON-RAMP

PLAN REF NO

TC514

SHEET

OF

SHEETS