

ADDRESS: 1002 N MERIDIAN, PUYALLUP, WA 98371
PROJECT NAME: JB0002294047 - PRINTS

CONTACTS

KAYLA BUCKLEY
LEAD PERMIT DRAFTER / PROJECT COORDINATOR
CANNON CONSTRUCTION
KBUCKLEY@TEAMCANNON.COM
253.221.2704

CHRIS WHITE
PROJECT MANAGER
CANNON CONSTRUCTION
CWHITE@TEAMCANNON.COM

SHEET INDEX

- 1 - COVER SHEET
- 2 - GENERAL NOTES
- 3 - LEGEND
- 4 - DESIGN VIEW
- 5/6 - TYPICALS 1/2

SCOPE OF WORK

STARTING NEAR 1002 N MERIDIAN MOVE EXISTING PEDESTAL INSIDE ROW. TIE IN AT NEW SPLICE CASE. BORE PLACEING NEW 2" CONDUIT AND FIBER. NEAR 1100 N MERIDIAN TRENCH PLACEING NEW 2" CONDUIT AND FIBER. SHIFT EXISTING PEDESTAL BEHIND SIDEWALK. SPLICE AT NEW SPLICE CASE. PLACE NEW 2" RISER AND NEW FIBER. PLACE NEW UTILITY POLE AT PROPOSED LOCATION. SHIFT EXISTING AERIAL PATH TO NEW POLE LOCATION. ALL CONSTRUCTION AND RESTORATION TO MEET OR EXCEED CITY OF PUYALLUP STANDARDS.



SITE LOCATION

DRAWING FILE LOCATION: Z:\SHARED\PROJECTS\CANNON\JB0002294047\JB0002294047_BOM1 - CAD\PRINTS\JB0002294047 - SR-167 SEGMENT 3-4 - MERIDIAN RD WIDENING AT FRED MEYERS_PRINTS.DWG

THE ACTUAL LOCATION OF EXISTING CONDUIT AND CABLES MAY VARY FROM THE LOCATION SHOWN. CANNON COMPANIES AND COMCAST DISCLAIMS ANY RESPONSIBILITIES FOR DAMAGES INCURRED TO ANY FACILITIES SHOWN OR NOT SHOWN IN THESE PRINTS. PERSONS WORKING IN THE AREA COVERED BY THIS DRAWING MUST CONTACT THE STATEWIDE CALL-BEFORE-YOU-DIG SYSTEM TO CONFIRM THE LOCATION OF UNDERGROUND FACILITIES.

CONFIDENTIAL/ PROPRIETARY

REVISIONS				
NO.	ENGINEER	DRAFTER	DATE	
ORIGINAL	KB	NH	10/07/2025	
1	----	----	----	
2	----	----	----	
AS-BUILT	----	----	----	



CANNON ENGINEER: KAYLA BUCKLEY

PROJECT NUMBER: JB0002294047

PERMIT NUMBER: ----

PROJECT LOCATION: 1002 N MERIDIAN, PUYALLUP, WA 98371



Know what's below.
Call before you dig.



SHEET NUMBER
1 OF 6

GENERAL NOTES

GENERAL NOTES: The locations of utilities shown on these drawing are only approximate. CANNON COMPANIES hereby disclaims any responsibility to third parties for the accuracy of this information. Persons working in the area covered by this drawing must contact the statewide Call-Before-You-Dig System to ascertain the location of underground utilities prior to performing any excavation.

1. ALL MATERIALS, WORKMANSHIP, AND CONSTRUCTION OF UTILITY IMPROVEMENTS SHALL MEET OR EXCEED SITE WORK STANDARDS AND THE STANDARDS AND SPECIFICATIONS SET FORTH IN THE CITY OF PUYALLUP REGULATIONS AND APPLICABLE STATE AND FEDERAL REGULATIONS. WHERE THERE IS CONFLICT BETWEEN THESE PLANS AND THE SPECIFICATIONS, OR ANY APPLICABLE STANDARDS, THE HIGHER QUALITY STANDARD SHALL APPLY. ALL WORK WITHIN PUBLIC R.O.W. OR EASEMENTS MAY REQUIRE INSPECTED AND APPROVED BY THE PUYALLUP INSPECTOR. INSPECTION SERVICES AND CONSTRUCTION CERTIFICATION TO BE PROVIDED BY DESIGNEE OF PROJECT SPONSOR/OWNER.
2. THE CONTRACTOR IS SPECIFICALLY CAUTIONED THAT THE LOCATION AND/OR ELEVATION OF EXISTING UTILITIES, AS SHOWN ON THESE PLANS, IS BASED ON RECORDS OF THE VARIOUS UTILITY COMPANIES AND, WHERE POSSIBLE, MEASUREMENTS TAKEN IN THE FIELD. THE INFORMATION IS NOT TO BE RELIED UPON AS BEING EXACT OR COMPLETE. THE CONTRACTOR MUST CALL THE LOCAL UTILITY LOCATION CENTER AT LEAST 48 HOURS BEFORE ANY EXCAVATION TO REQUEST EXACT FIELD LOCATIONS OF EXISTING UTILITIES. THE CONTRACTOR SHALL VERIFY PERTINENT LOCATIONS AND ELEVATIONS, ESPECIALLY AT THE CONNECTION POINTS AND AT POTENTIAL UTILITY CONFLICTS. IT SHALL BE THE RESPONSIBILITY OF THE CONTRACTOR TO RELOCATE ALL EXISTING UTILITIES THAT CONFLICT WITH THE PROPOSED IMPROVEMENTS SHOWN ON THESE PLANS.
3. THE CONTRACTOR SHALL BE RESPONSIBLE FOR OBTAINING ALL NECESSARY PERMITS FROM ALL APPLICABLE AGENCIES. THE CONTRACTOR SHALL NOTIFY THE PUYALLUP INSPECTOR AT LEAST 48 HOURS PRIOR TO THE START OF ANY EARTH DISTURBING ACTIVITY OR CONSTRUCTION ON ANY AND ALL PUBLIC IMPROVEMENTS IF REQUIRED.
4. THE CONTRACTOR SHALL COORDINATE AND COOPERATE WITH THE CITY OF PUYALLUP AND ALL UTILITY COMPANIES WITH REGARD TO RELOCATIONS OR ADJUSTMENTS OF EXISTING UTILITIES DURING CONSTRUCTION, TO ASSURE THAT THE WORK IS ACCOMPLISHED IN A TIMELY FASHION, AND WITH A MINIMUM DISRUPTION OF SERVICE. THE CONTRACTOR SHALL BE RESPONSIBLE FOR CONTACTING ALL PARTIES AFFECTED BY ANY DISRUPTION OF ANY UTILITY SERVICE.
5. THE CONTRACTOR SHALL HAVE ONE (1) SIGNED COPY OF THE APPROVED PLANS, ONE (1) COPY OF THE APPROPRIATE STANDARDS AND SPECIFICATIONS, AND ONE (1) COPY OF ANY PERMITS AND EXTENSION AGREEMENTS NEEDED FOR THE JOB ON-SITE AT ALL TIMES.
6. THE CONTRACTOR SHALL BE RESPONSIBLE FOR ALL ASPECTS OF SAFETY INCLUDING, BUT NOT LIMITED TO: EXCAVATION, TRENCHING, SHORING, TRAFFIC CONTROL, AND SECURITY.
7. IF, DURING THE CONSTRUCTION PROCESS, CONDITIONS ARE ENCOUNTERED BY THE CONTRACTOR, HIS SUBCONTRACTORS, OR OTHER AFFECTED PARTIES WHICH COULD INDICATE A SITUATION THAT IS NOT IDENTIFIED IN THE PLANS OR SPECIFICATIONS, THE CONTRACTOR SHALL CONTACT THE ENGINEER IMMEDIATELY.
8. ALL REFERENCES TO ANY PUBLISHED STANDARDS SHALL REFER TO THE LATEST REVISION OF SAID STANDARD, UNLESS SPECIFICALLY STATED OTHERWISE.
9. FOR WORK AFFECTING PUBLIC ROADWAYS OR IF REQUIRED BY THE CITY OF PUYALLUP, THE CONTRACTOR SHALL SUBMIT A TRAFFIC CONTROL AND PHASING PLAN IN ACCORDANCE WITH M.U.T.C.D. FOR APPROVAL. PRIOR TO ANY CONSTRUCTION ACTIVITIES WITHIN OR AFFECTING THE RIGHT-OF-WAY, THE CONTRACTOR SHALL BE RESPONSIBLE FOR PROVIDING ANY AND ALL TRAFFIC CONTROL DEVICES AS MAY BE REQUIRED BY SAID PLANS. PRIOR TO INSTALLATION A PRECONSTRUCTION CONFERENCE SHALL BE HELD WITH THE CITY OF PUYALLUP.
10. THE CONTRACTOR IS RESPONSIBLE FOR PROVIDING ALL LABOR AND MATERIALS NECESSARY FOR THE COMPLETION OF THE INTENDED IMPROVEMENTS SHOWN ON THESE DRAWINGS OR DESIGNATED TO BE PROVIDED, INSTALLED, CONSTRUCTED, REMOVED OR RELOCATED UNLESS SPECIFICALLY NOTED OTHERWISE.
11. PER AGENCY STANDARDS THE CONTRACTOR SHALL BE RESPONSIBLE FOR KEEPING ROADWAYS FREE AND CLEAR OF ALL CONSTRUCTION DEBRIS AND DIRT TRACKED FROM THE SITE.
12. THE CONTRACTOR SHALL BE RESPONSIBLE FOR RECORDING RECORD INFORMATION ON A SET OF RECORD DRAWINGS KEPT AT THE CONSTRUCTION SITE AND AVAILABLE TO THE PUYALLUP INSPECTOR AT ALL TIMES.
13. DIMENSIONS FOR LAYOUT AND CONSTRUCTION ARE NOT TO BE SCALED FROM ANY DRAWING. FOR ADDITIONAL INFORMATION CONTACT THE ENGINEER FOR CLARIFICATION AND NOTE ON THE RECORD DRAWINGS.
14. ALL EROSION AND SEDIMENT CONTROL (E.S.C.) MEASURES SHALL BE INSTALLED AT THE LIMITS OF CONSTRUCTION PRIOR TO GROUND DISTURBING ACTIVITY. ALL E.S.C. MEASURES SHALL BE MAINTAINED IN GOOD REPAIR BY THE CONTRACTOR UNTIL SUCH TIME AS THE ENTIRE DISTURBED AREAS ARE STABILIZED WITH HARD SURFACE OR LANDSCAPING.
15. ALL WORK WITHIN THE PUBLIC RIGHT-OF-WAY IS SUBJECT TO THE JURISDICTION OF THE CITY OF PUYALLUP ENGINEERING DEPARTMENT STANDARD DETAILS AND SPECIFICATIONS.
16. ALL CONSTRUCTION OPERATIONS, INCLUDING THE WARMING UP, REPAIR, ARRIVAL, DEPARTURE OR RUNNING OF TRUCKS, EARTH MOVING EQUIPMENT, CONSTRUCTION EQUIPMENT AND ANY OTHER ASSOCIATED EQUIPMENT SHALL GENERALLY BE LIMITED TO THE TIME PERIOD APPROVED BY THE CITY OF PUYALLUP.

All proposed franchise utilities shall be located within a recorded utility easement or in the public right-of-way as determined by the City of Puyallup. The City of Puyallup does not authorize or permit utility work on private property.

Where a curb exists, the lateral offset of all vertical obstructions shall be a minimum of 1.5' from the face of the curb to the face of the vertical obstruction and a minimum of 3' at intersections. Where no curb exists, the lateral offset of all vertical obstructions shall be a minimum of 4' measured from the edge of pavement to the face of the obstruction.

A 10" diameter core drill is allowed for potholing. For pothole windows larger than 10" in diameter or trenching completed in existing roadway, the contractor shall restore the pavement by installing the trench patch and then grinding/overlaying. All roadway restoration and street patches shall comply with City Standard Detail 01.01.20.

THE ACTUAL LOCATION OF EXISTING CONDUIT AND CABLES MAY VARY FROM THE LOCATION SHOWN. CANNON COMPANIES AND COMCAST DISCLAIMS ANY RESPONSIBILITIES FOR DAMAGES INCURRED TO ANY FACILITIES SHOWN OR NOT SHOWN IN THESE PRINTS. PERSONS WORKING IN THE AREA COVERED BY THIS DRAWING MUST CONTACT THE STATEWIDE CALL-BEFORE-YOU-DIG SYSTEM TO CONFIRM THE LOCATION OF UNDERGROUND FACILITIES.	REVISIONS					CANNON ENGINEER: KAYLA BUCKLEY			SHEET NUMBER 2 OF 6
	NO.	ENGINEER	DRAFTER	DATE		PROJECT NUMBER: JB0002294047			
	ORIGINAL	KB	NH	10/07/2025		PERMIT NUMBER: ----			
	1	----	----	----		PROJECT LOCATION: 1002 N MERIDIAN, PUYALLUP, WA 98371			
	2	----	----	----					
CONFIDENTIAL/ PROPRIETARY	AS-BUILT	----	----	----				Know what's below. Call before you dig.	

LEGEND

SYMBOLS

	CATCH BASIN/INLET		RISER - EXISTING
	FIRE HYDRANT		RISER - PROPOSED
	WATER/GAS VALVE		POLE ANCHOR/DOWN GUY - EXISTING
	LIGHT POST		POLE ANCHOR/DOWN GUY - PROPOSED
	STREET SIGN		POLE ANCHOR/DOWN GUY - EXISTING
	ADA RAMP		AERIAL STORAGE - EXISTING
	BUSH		AERIAL STORAGE - PROPOSED
	HEDGE		SPLICE POINT - EXISTING
	TREE		SPLICE POINT - PROPOSED
	TREE STUMP		UTILITY VAULT - EXISTING (SIZE MAY VARY)
	UTILITY POLE - EXISTING		UTILITY VAULT - PROPOSED (SIZE MAY VARY)
	UTILITY POLE - PROPOSED		UTILITY PEDESTAL - EXISTING (SIZE MAY VARY)
			UTILITY PEDESTAL - PROPOSED (SIZE MAY VARY)
			UNDERGROUND STORAGE - EXISTING
			UNDERGROUND STORAGE - PROPOSED
			UTILITY POTHOLE
			BORE/TRENCH - PROPOSED (SIZE MAY VARY)

SYMBOLS CONT.

	RESTORATION LIMITS (SIZE MAY VARY)
	UTILITY CONTINUES
	UTILITY ENDS
	CONSTRUCTION NOTE/RESTORATION CALLOUT
	PHOTO LOCATION/ORIENTATION CALLOUT
	DIMENSIONS FROM PREVIOUS PAGE
	RETAINING WALL
	NORTH ARROW

HATCH PATTERNS

	CONCRETE SIDEWALK
	GRAVEL
	BRICK/COBBLE
	WATER BODY

LINETYPES

	AERIAL FIBER - EXISTING
	AERIAL FIBER - PROPOSED
	CONDUIT - EXISTING
	CONDUIT - PROPOSED
	CENTER LINE/STATION LINE
	RIGHT OF WAY
	PARCEL BOUNDARY
	SANITARY SEWER
	STORM DRAIN
	WATER
	GAS
	STEAM
	ELECTRIC
	FIBER OPTIC
	TELEPHONE
	UNKNOWN UTILITY
	FENCE

INFORMATION TABLES

#F	IN: 0	OUT: 0	SEQUENTIAL IN/OUT CALLOUT
#F	IN: 0	TAIL: 0	SEQUENTIAL IN/TAIL CALLOUT
#F	TAIL: 0	OUT: 0	SEQUENTIAL TAIL/OUT CALLOUT
TITLE N/A			UTILITY POLE INFORMATION TABLE (NUMBER OF ATTACHMENTS MAY VARY)
UTILITY1	0'-0"		
PROP UTILITY 1	0'-0"		

THE ACTUAL LOCATION OF EXISTING CONDUIT AND CABLES MAY VARY FROM THE LOCATION SHOWN. CANNON COMPANIES AND COMCAST DISCLAIMS ANY RESPONSIBILITIES FOR DAMAGES INCURRED TO ANY FACILITIES SHOWN OR NOT SHOWN IN THESE PRINTS. PERSONS WORKING IN THE AREA COVERED BY THIS DRAWING MUST CONTACT THE STATEWIDE CALL-BEFORE-YOU-DIG SYSTEM TO CONFIRM THE LOCATION OF UNDERGROUND FACILITIES.

CONFIDENTIAL/ PROPRIETARY

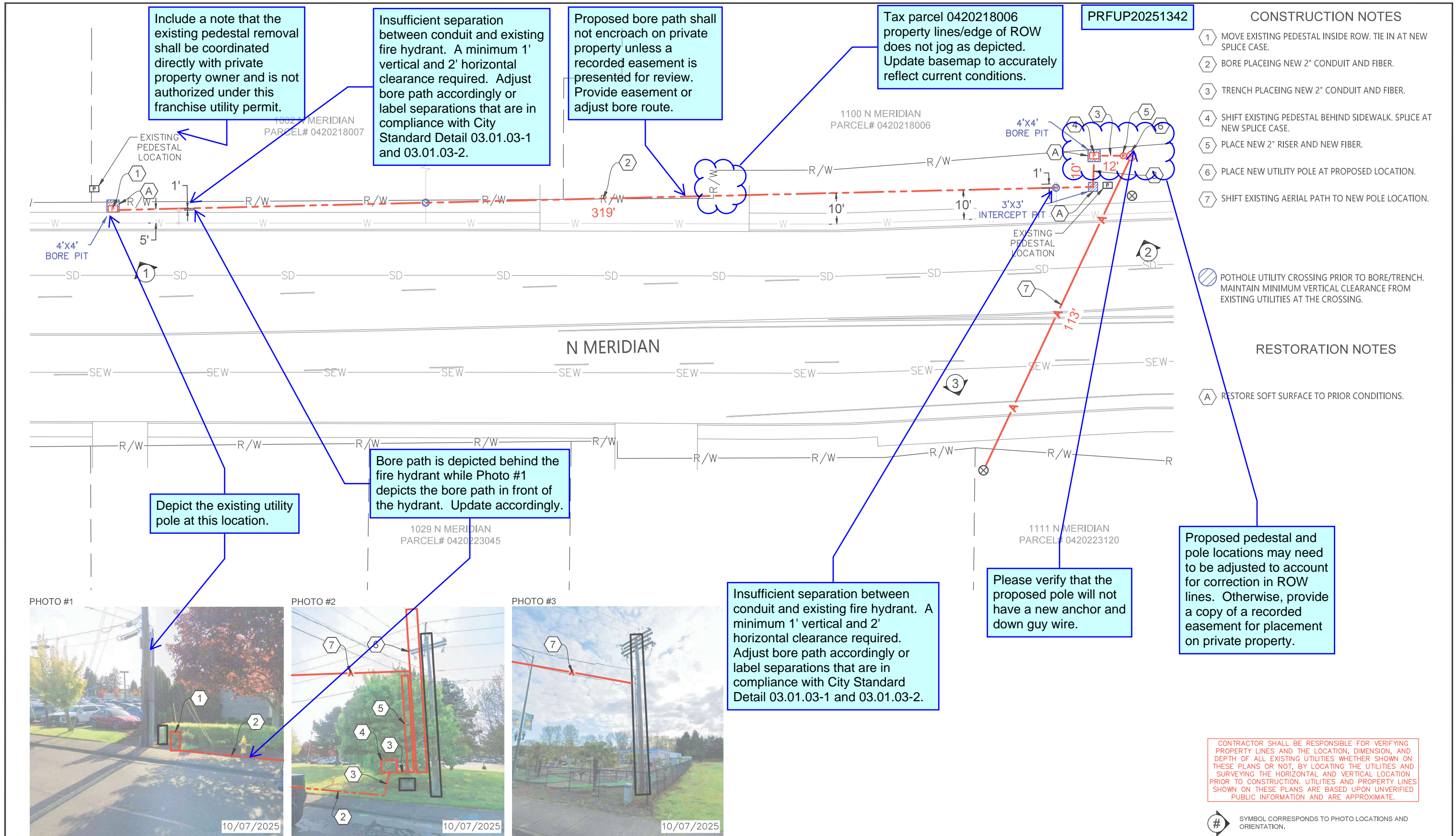
REVISIONS				
NO.	ENGINEER	DRAFTER	DATE	
ORIGINAL	KB	NH	10/07/2025	
1	----	----	----	
2	----	----	----	
AS-BUILT	----	----	----	



CANNON ENGINEER: KAYLA BUCKLEY
PROJECT NUMBER: JB0002294047
PERMIT NUMBER: ----
PROJECT LOCATION: 1002 N MERIDIAN, PUYALLUP, WA 98371



Know what's below.
Call before you dig.



THE ACTUAL LOCATION OF EXISTING CONDUIT AND CABLES MAY VARY FROM THE LOCATION SHOWN. CANNON COMPANIES AND COMCAST DISCLAIMS ANY RESPONSIBILITIES FOR DAMAGES INCURRED TO ANY FACILITIES SHOWN OR NOT SHOWN IN THESE PRINTS. PERSONS WORKING IN THE AREA COVERED BY THIS DRAWING MUST CONTACT THE STATEWIDE CALL-BEFORE-YOU-DIG SYSTEM TO CONFIRM THE LOCATION OF UNDERGROUND FACILITIES.

CONFIDENTIAL/ PROPRIETARY

REVISIONS				
NO.	ENGINEER	DRAFTER	DATE	
ORIGINAL	KB	NH	10/07/2025	
1	----	----	----	
2	----	----	----	
AS-BUILT	----	----	----	

CANNON ENGINEER: KAYLA BUCKLEY

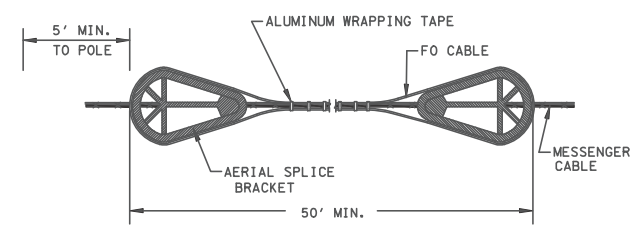
PROJECT NUMBER: JB0002294047

PERMIT NUMBER: ----

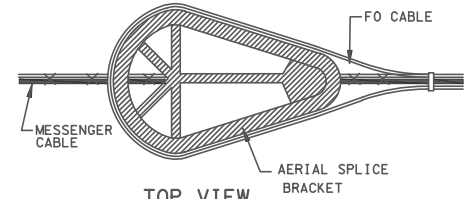
PROJECT LOCATION: 1002 N MERIDIAN, PUYALLUP, WA 98371

SHEET NUMBER
4 OF 6

TYPICALS

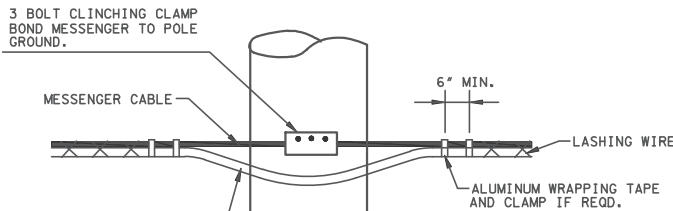


TYPICAL STRAND STORAGE FOR FIBER OPTIC CABLES

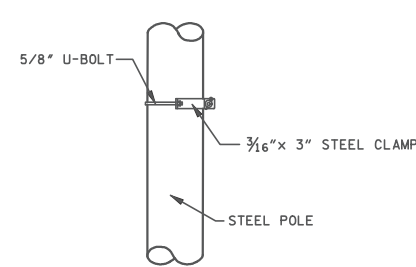


TOP VIEW
AERIAL SLACK BRACKET DETAIL

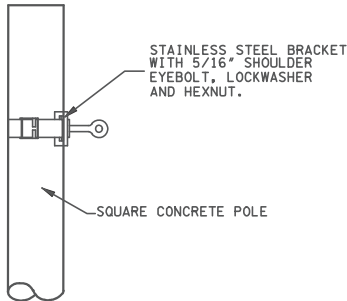
NOTE:
1. BRACKET RADIUS SHALL BE LARGER THAN CABLE MANUFACTURES MINIMUM BEND RADIUS FOR LONG TERM STORAGE OF LARGEST CABLE DIAMETER.



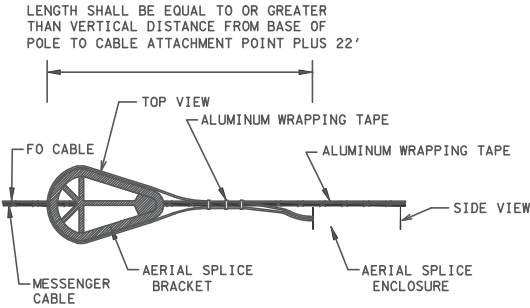
TYPICAL CABLE CONTINUATION-SAME MESSENGER CABLE



TYPICAL POLE ATTACHMENT FOR STEEL POLE

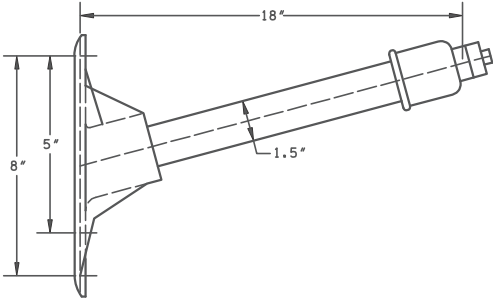


TYPICAL POLE ATTACHMENT FOR SQUARE CONCRETE POLE

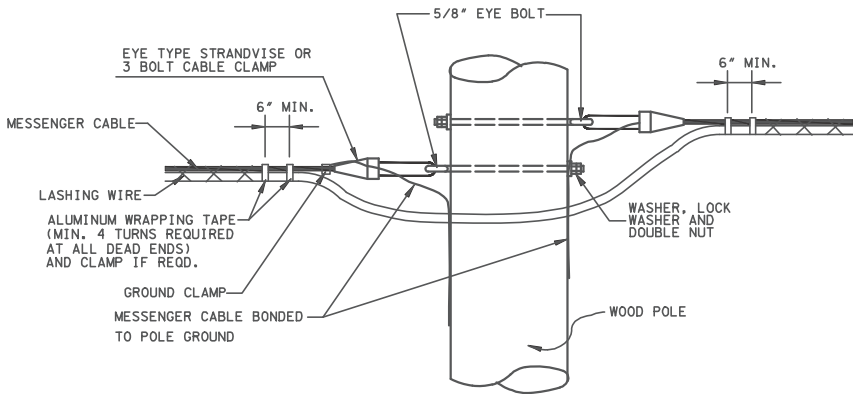


AERIAL SPLICE DETAIL

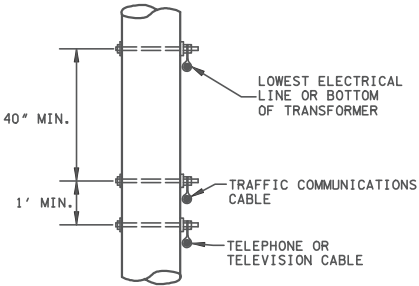
NOTE:
1. AERIAL SLACK BRACKETS SHALL BE USED AT ALL AERIAL SPLICE LOCATIONS.
2. ALL CABLES SHALL ENTER SPLICE CLOSURE AT SAME END.



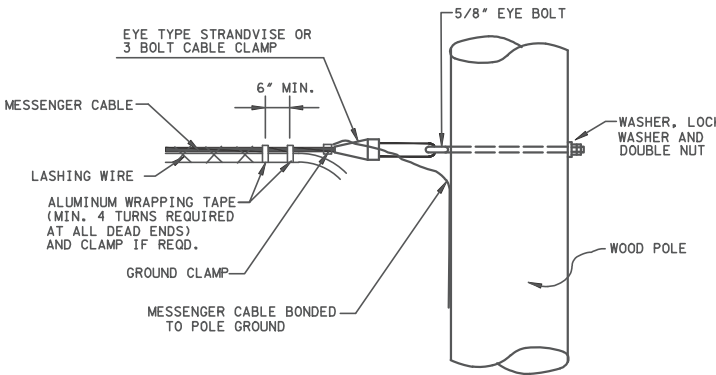
CABLE EXTENSION BRACKET MEDIUM DUTY



ALTERNATE CABLE CONTINUATION-SEPARATE MESSENGER CABLE

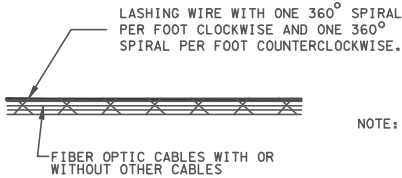


MINIMUM CLEARANCE TO TELEPHONE OR TELEVISION CABLE



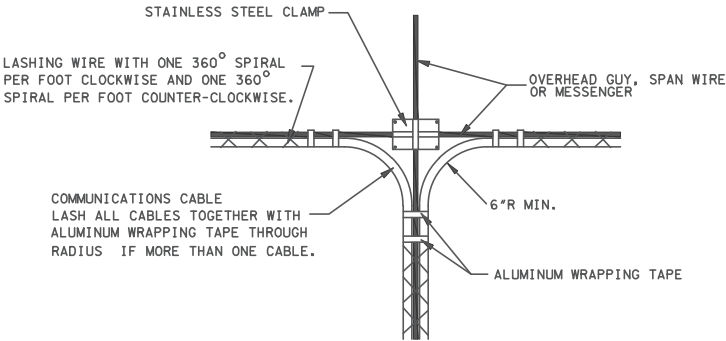
TYPICAL POLE ATTACHMENT DETAIL FOR MESSENGER DEAD END OR TURNS

NOTE: DEAD END ATTACHMENTS TO BE UTILIZED ON ALL TRANSFERS FROM UTILITY POLES TO SIGNAL POLES.



NOTE: ALL FIBER TRUNK CABLE SHALL BE DOUBLE LASHED. DROP CABLE MAY BE SINGLE LASHED

TYPICAL CABLE LASHING DETAIL DOUBLE LASHING



CABLE LASHED TO OVERHEAD MESSENGER CABLE

THE ACTUAL LOCATION OF EXISTING CONDUIT AND CABLES MAY VARY FROM THE LOCATION SHOWN. CANNON COMPANIES AND COMCAST DISCLAIMS ANY RESPONSIBILITIES FOR DAMAGES INCURRED TO ANY FACILITIES SHOWN OR NOT SHOWN IN THESE PRINTS. PERSONS WORKING IN THE AREA COVERED BY THIS DRAWING MUST CONTACT THE STATEWIDE CALL-BEFORE-YOU-DIG SYSTEM TO CONFIRM THE LOCATION OF UNDERGROUND FACILITIES.

CONFIDENTIAL/ PROPRIETARY

REVISIONS			
NO.	ENGINEER	DRAFTER	DATE
ORIGINAL	KB	NH	10/07/2025
1	----	----	----
2	----	----	----
AS-BUILT	----	----	----



CANNON ENGINEER: KAYLA BUCKLEY
PROJECT NUMBER: JB0002294047
PERMIT NUMBER: ----
PROJECT LOCATION: 1002 N MERIDIAN, PUYALLUP, WA 98371



Know what's below.
Call before you dig.

SHEET NUMBER
5 OF 6

TYPICALS

PRFUP20251342

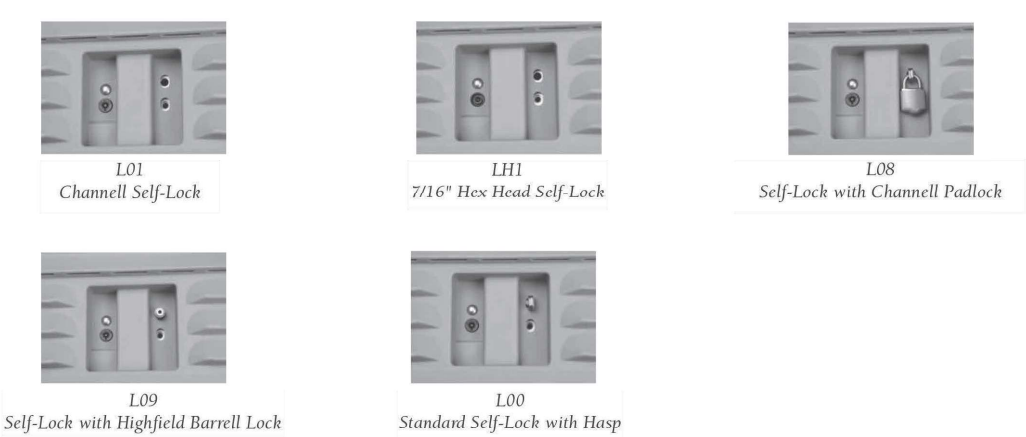
Specifications

Dimensions:	Cover : 38" L x 26" W x 24" H (965.2mm L x 660.4mm W x 609.6mm H)
	Base (Outside): 40" L x 28.75" W x 24" H (1016.0mm L x 730.25mm W x 609.6mm H)
Weight:	121 lbs (55.0kg)
Shipping:	1 unit/pallet

Bracketry



Locking Options



Accessories



Ordering Information

Signature Pedestal Housing	SPH	24 36	5	CX	BX	LXX	AXX
Size							
Width							
Length							
Cover Option							
5							
500 Series Cover							
Color							
C1							
Light Green							
C2							
Beige							
C3							
Dark Green							
C4							
Brown							
C5							
Grey							
C6							
Granite							
C7							
Sandstone							
C8							
Red Brick							
Select Mounting Brackets							
B3							
MB-0052							
B5							
MB-0080							
Select Locking Option							
L00							
Standard Self-Lock with Hasp							
L01							
Standard Self-Lock							
L08							
Standard Self-Lock with Channell Padlock							
L09							
Standard Self-Lock with Highfield Barrell Lock							
LH1							
Hex Head Self-Lock							
Additional Options							
A08							
Cover with Anti-insect Vents							
Example: SPH24365C1B3L01							
SPH2436: 500 Series Cover, Light Green, MB0052 Bracket, Standard Channell Self-Lock (L01)							

THE ACTUAL LOCATION OF EXISTING CONDUIT AND CABLES MAY VARY FROM THE LOCATION SHOWN. CANNON COMPANIES AND COMCAST DISCLAIMS ANY RESPONSIBILITIES FOR DAMAGES INCURRED TO ANY FACILITIES SHOWN OR NOT SHOWN IN THESE PRINTS, PERSONS WORKING IN THE AREA COVERED BY THIS DRAWING MUST CONTACT THE STATEWIDE CALL-BEFORE-YOU-DIG SYSTEM TO CONFIRM THE LOCATION OF UNDERGROUND FACILITIES.

CONFIDENTIAL/ PROPRIETARY

REVISIONS				
NO.	ENGINEER	DRAFTER	DATE	
ORIGINAL	KB	NH	10/07/2025	
1	----	----	----	
2	----	----	----	
AS-BUILT	----	----	----	



CANNON ENGINEER: KAYLA BUCKLEY

PROJECT NUMBER: JB0002294047

PERMIT NUMBER: ----

PROJECT LOCATION: 1002 N MERIDIAN, PUYALLUP, WA 98371



Know what's below.
Call before you dig.

SHEET NUMBER
6 OF 6