

CALC PLACARD

Design Area # 1 HAZARD: OH-1
Zone: 1 System Type: WET
Location: KITCHEN 105
Flowing Outlets: 12
Density: 0.15 Remote Area: 900
Flow: 452.3 gpm @ 35 psi
Calculation Safety: 7.1 psi
Includes 250 gpm Hose allowance

NOTE: AREA REDUCED BY 40%
TO 900SF PER 19.3.3.2.3

GENERAL NOTES

- INTERNATIONAL BUILDING CODE (2021) w/ WASHINGTON STATE AMENDMENTS
 - OCCUPANCY: GROUP A-2
 - TYPE OF CONSTRUCTION: V-B
 - SPRINKLERED AREAS (APPROXIMATE - SEE ARCHITECTURAL PLANS FOR ACTUAL)
BUILDING AREA = 3,854 SF
CONCEALED SPACE = 3,854 SF
 - INSTALLATION STANDARDS:
SPRINKLER SYSTEM DESIGNED AND INSTALLED PER NFPA-13 (2019)
- SPRINKLER PIPE TYPES:
 - 1" BRANCHLINES TO BE BLK SCHEDULE 40 PIPING WITH THREADED FITTINGS
 - 1/2" THROUGH 2 1/2" MAIN & BRANCHLINES TO BE BLK SCHEDULE 10 PIPING WITH GROOVED FITTINGS
- DESIGN CRITERIA
 - LIGHT HAZARD AREAS DESIGNED TO DELIVER 0.10 GPM/S.F. OVER THE MOST DEMANDING 1500 S.F.
 - ORDINARY HAZARD GROUP 1 AREAS DESIGNED TO DELIVER 0.15 GPM/S.F. OVER THE MOST DEMANDING 1500 S.F.
 - REMOTE AREA REDUCTIONS HAVE BEEN TAKEN WHERE APPLICABLE PER NFPA 13 11.2.3.2.3
- NOTES:
 - ALL MATERIAL TO BE NEW AND MEET U.L. STANDARDS
 - HANGERS TO BE INSTALLED IN ACCORDANCE WITH NFPA 13. SEE PLAN FOR HANGING REQUIREMENTS
- SYMBOLS USED ON DRAWINGS:
 - 6-9.5" PIPE ELEVATION A.F.F.
 - OH1 ROOM HAZARD CLASSIFICATION (ALL ROOMS ARE CONSIDERED LIGHT HAZARD UNLESS NOTED)
 - 01 HYDRAULIC CALCULATION JUNCTION POINT
 - 10'-0" CEILING HEIGHT
 - SEISMIC BRACING
- SCOPE OF WORK:
 - INSTALL A COMPLETE WET FIRE SPRINKLER SYSTEM THAT WILL COVER ALL AREAS OF THE BUILDING PER NFPA 13 IN ITS ENTIRETY. FDC TO BE INSTALLED AT A REMOTE LOCATION AS SHOWN ON THE SITE PLAN.

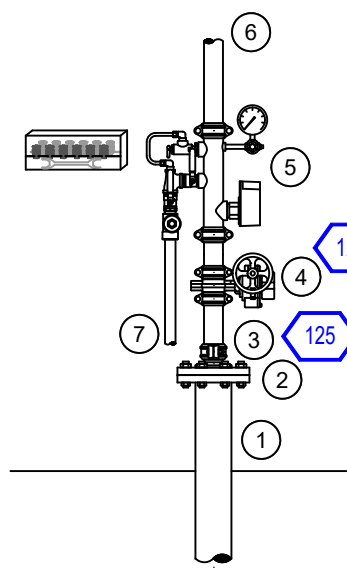
FIRE SPRINKLER PLAN
SCALE: 1/8" = 1'-0"

City of Puyallup
Fire
REVIEWED
FOR
COMPLIANCE
DDrake
11/14/2025
2:08:39 PM
CITY OF PUYALLUP
STATE OF WASHINGTON

THE APPROVED CONSTRUCTION
PLANS AND ALL ENGINEERING
MUST BE POSTED ON THE JOB AT
ALL INSPECTIONS IN A VISIBLE AND
READILY ACCESSIBLE LOCATION.

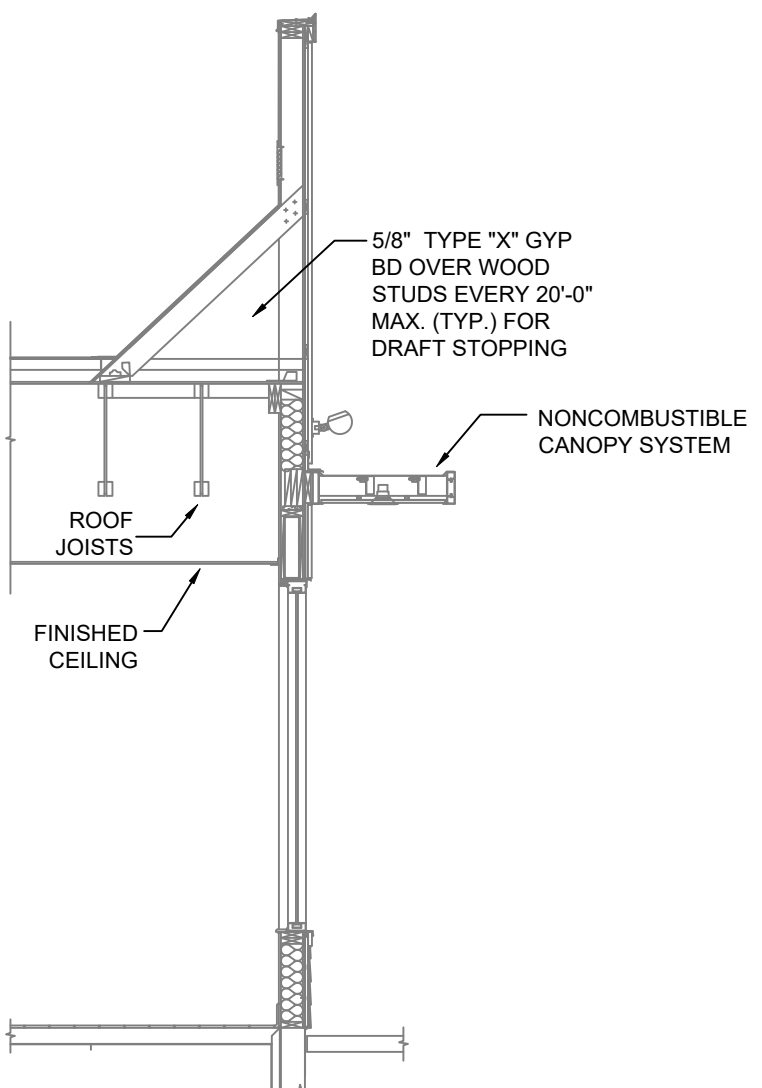
Approval of submitted plans is not an
approval of omissions or oversight by this
office or noncompliance with any
applicable regulations of local government.
The contractor is responsible for making
sure that the building complies with all
applicable building codes and regulations of
the local government.

City of Puyallup Development & Permitting Services ISSUED PERMIT			
Building	Planning		
Engineering	Public Works		
Fire	Traffic		



RISER LEGEND

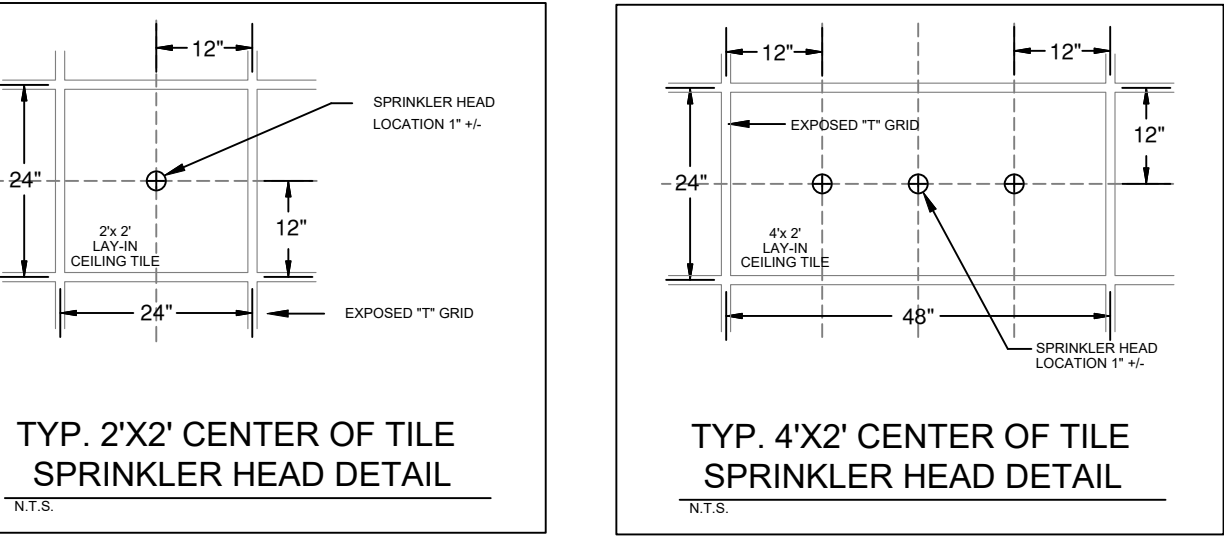
- 6" UNDERGROUND WATER SERVICE (BY OTHERS)
(FLUSHING & TESTING OF THE UNDERGROUND SHALL
BE COMPLETED PRIOR TO THE SPRINKLER SYSTEM
HOOKUP. UNDERGROUND PAPERS ARE TO BE
SUPPLIED TO THE "FP" CONTRACTOR BY THE G.C.)
- 6" FLANGED X GROOVED ADAPTER
- 6"x2 1/2" GROOVED CONC. REDUCER
- 2 1/2" GROOVED BUTTERFLY VALVE w/ TAMPER
- 2 1/2" GROOVED COMMERCIAL RISER MANIFOLD w/
FLOW SWITCH, PRESSURE GAUGE, & TEST AND
DRAIN
- 2 1/2" GROOVED TO SYSTEM
- MAIN DRAIN PIPED TO OUTSIDE



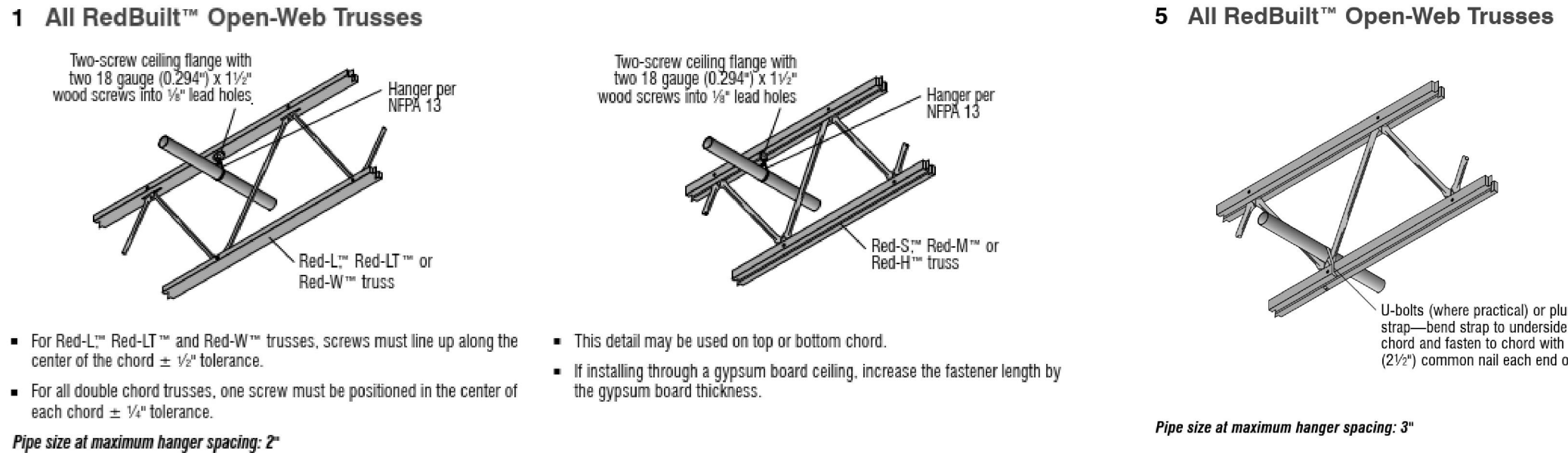
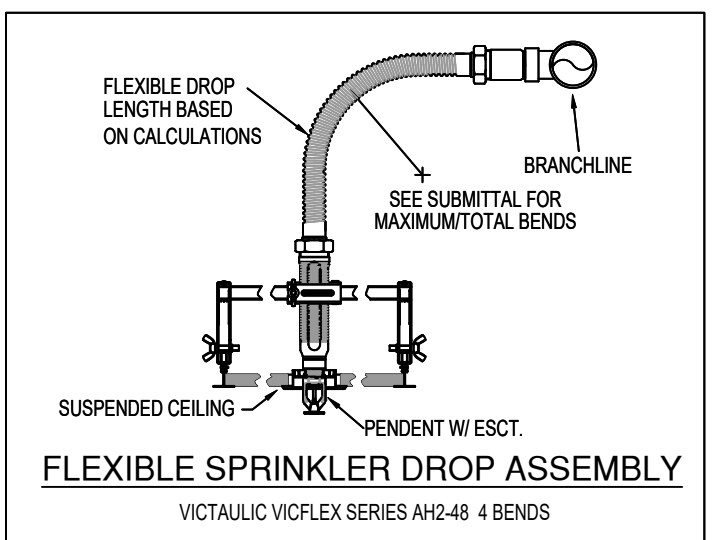
1 RISER DETAIL
SCALE: 1/2" = 1'-0"

SYM	CNT	POSITION	FINISH	TEMP	K	NPT	SIN	MF.G.	MODEL#	ESCUTCHEON
34	SPRIG	BRASS	200	5.60	1/2"	TY313	TY00	TY-FRB	N/A	
47	PENDENT	WHITE	200	5.60	1/2"	TY323	TY00	TY-FRB	SEMI-RECESSED	
3	DRY PENDENT	CHROME	200	5.60	1"	TY3255	TY00	DS-1	STANDARD	
84	TOTAL									

SPRINKLER HEAD LEGEND



INSTALLATION DETAILS

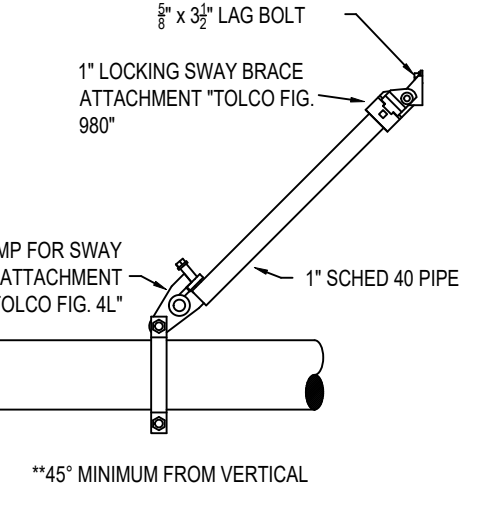
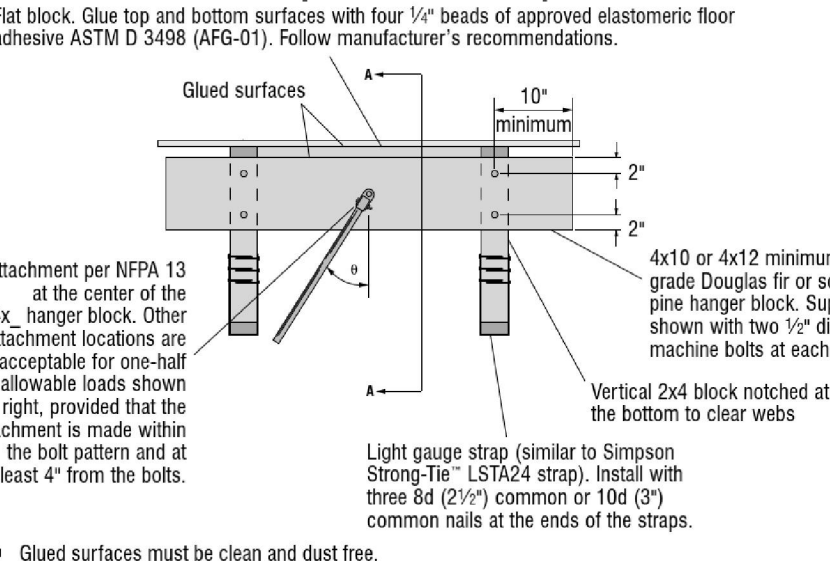


HANGER DETAILS

*REFER TO REDBUILT SPRINKLER SYSTEM
INSTALLATION GUIDE FOR MORE DETAILS

OPEN-WEB TRUSS SEISMIC DETAILS

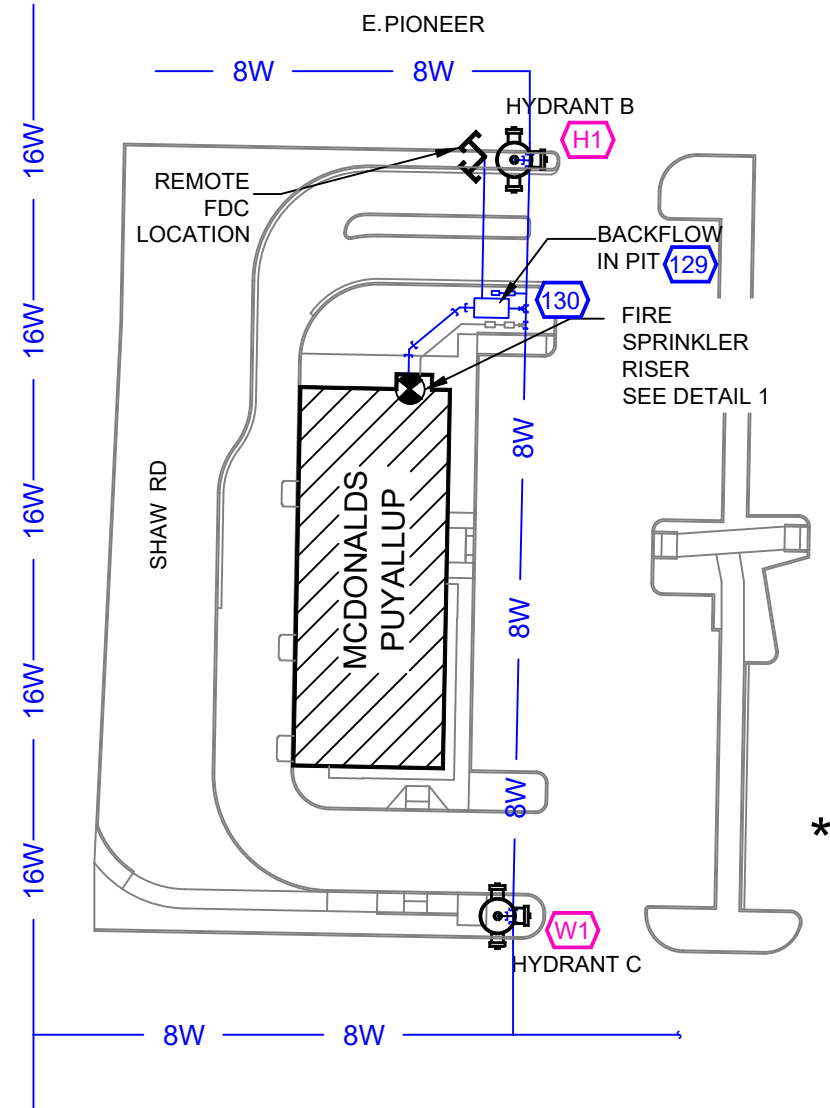
EQ1 For Loads Perpendicular To Open-Web Trusses



EARTHQUAKE BRACING DETAILS

*REFER TO REDBUILT SPRINKLER SYSTEM
INSTALLATION GUIDE FOR MORE DETAILS

A WALL SECTION - FRONT ENTRANCE
SCALE: 1/4" = 1'-0"



FLOW TEST INFO:
STATIC: 43 PSI
RESID: 28 PSI
FLOW: 1920 GPM

* FLOW TEST INFORMATION
PROVIDED BY CITY OF
PUYALLUP ON 8-12-25

SITE PLAN
SCALE: 1" = 50'-0"

Expires 06/31/26
WASHINGTON STATE
CERTIFICATE OF COMPETENCY
FIRE SPRINKLER SYSTEMS
Darin Syverson
3135-0514.C Level 3
Brimstone Fire Safety Management, LLC
BRMSFS918KO
Signature Date
9/5/2025

REVISIONS
1 10/8/25 UPDATED NFPA CODE TO 2019

Drawing Title
FIRE PROTECTION PLAN
Project No. 25-1559
Drawn By AMM
Scale 1/8" = 1'
Date 09/17/25
DWG Type SUBMITTAL DWG
Parcel Number. 0420264021

MCDONALDS PUYALLUP
731 SHAW RD PUYALLUP, WA 98372
Brimstone
Fire Safety Management LLC
3615 132nd St SW Suite A - Lynnwood, WA 98087

FP1 OF 1