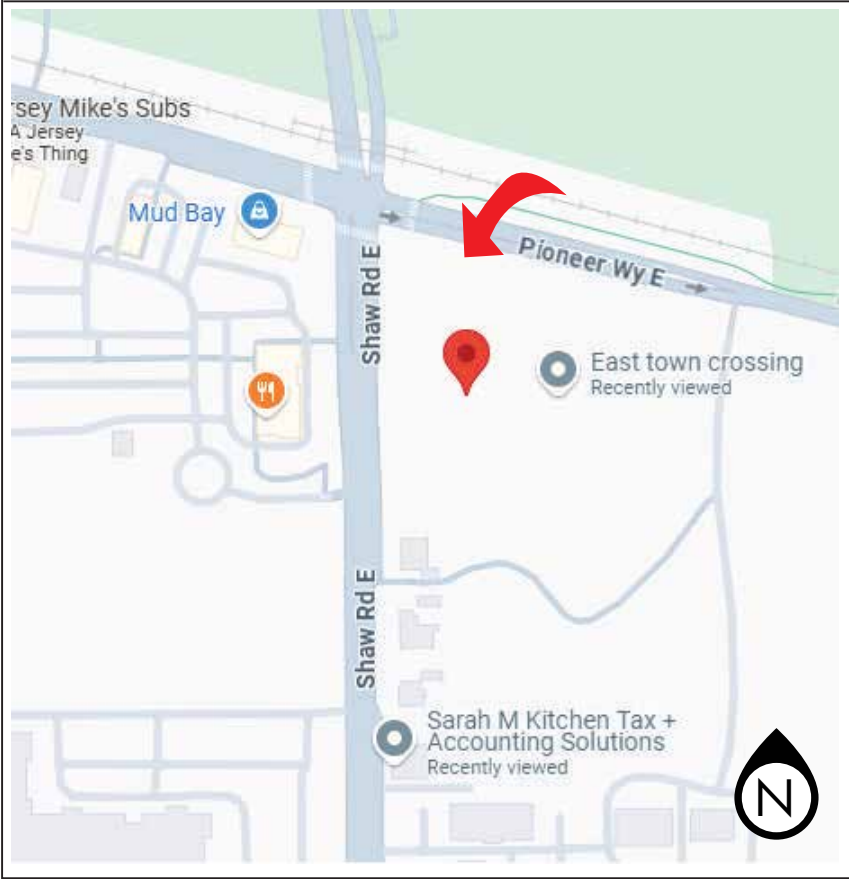


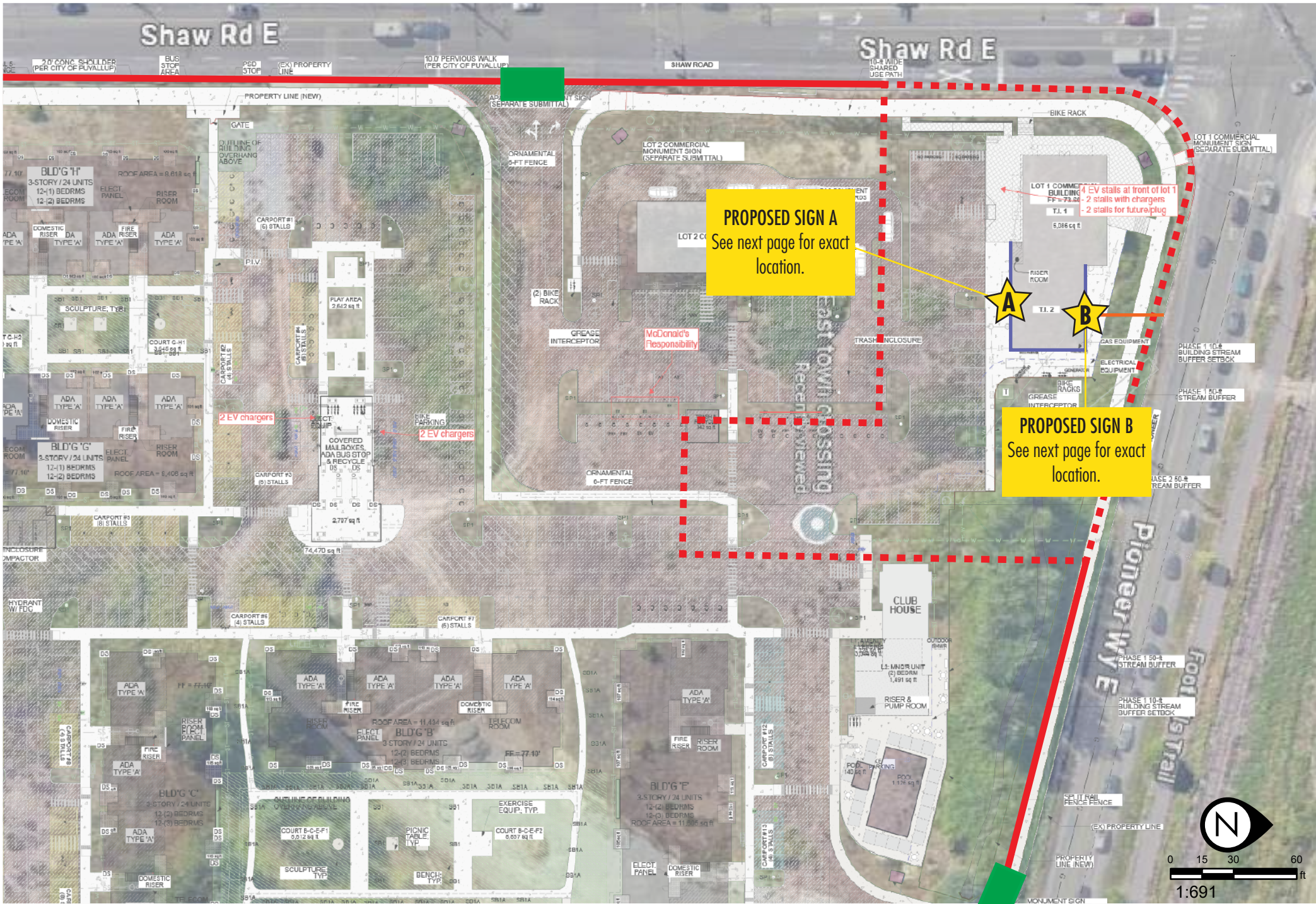
PARCEL INFO

Parcel: 0420264071
Zone: CG - General Commercial
Parcel Area: 0.795 acres
Site Address:
727 Shaw Rd E, Ste B
Puyallup WA 98372

Property Taxpayer:
EAST TOWN CROSSING LLC
PO BOX 184
PUYALLUP, WA
98371-0020



SITE INFORMATION



- ★ Proposed Sign
- ▭ Property Line
- ▭ Tenant Frontage
- ▭ Parcel Line
- ▭ Sign Setback
- ▭ Driveway

Sign Setback from nearest street = 60'
Tenant Frontage = ±139'
Sign to be installed facing East Town Commercial Lot
and Pioneer Way E
Two (2) Driveways

City of Puyallup
Building
REVIEWED
FOR
COMPLIANCE
BSnowden
11/17/2025
8:56:18 AM



(253) 314 5623
www.clearwaysigns.com

Hotworx_Puyallup_Exterior Signs

City of Puyallup Development & Permitting Services ISSUED PERMIT			
Building	Planning	Public Works	Traffic
Engineering	Fire		

Job Order:	Date created: Oct. 31, 2025	Date revised:
Sign Type: Channel Letters	Approval:	
Size:		

The design depicted herein is the sole property of Clearway Signs, and may not be reproduced in whole or in part without prior written consent. Actual color, letter sizes and graphic layout may vary slightly due to the properties of materials. Colors may vary depending on media substrate. This sign is intended to be installed in accordance with Article 600 of the National Electrical Code and/or other applicable local codes.

CROSS-HATCHING REPRESENTS
PLAZA AREA WITH A
DECORATIVE/STAMPED
CONCRETE PER LAND USE
REQUIREMENT

LOT 1 COMMERCIAL
MONUMENT SIGN
(SEPARATE SUBMITTAL)

OUTLINE OF CANOPY
ABOVE; TYPICAL

OUTLINE OF CANOPY
ABOVE; TYPICAL

ON GRADE STEPS WITH 7" (MAX.)
RISERS, 12" (MIN.) TREADS & HANDRAIL
ON EACH SIDE; SEE CIVIL DRAWINGS
FOR RELATED INFORMATION

GROSS AREA = 5,103 sq ft

**LOT 1 COMMERCIAL
BUILDING
FF = 73.60'**

— RISER ROOM

T.I. 2

GAS EQUIPMENT

ELECTRICAL EQUIPMENT

PHASE 1 10-ft
BUILDING STREAM
BUFFER SETBACK

PHASE 1 50-ft
STREAM BUFFER

OT No.2
(MITTAL)

The approved construction plans, documents, and all engineering must be posted on the job at all inspections in a visible and readily accessible location.

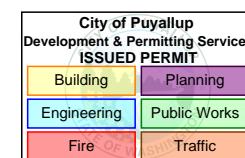
Full sized legible color plans are required to be provided by the permittee on site for inspection.

Approval of submitted plans is not an approval of omissions or oversights by this office or non compliance with any applicable regulations of local government. The contractor is responsible for making sure that the building complies with all applicable codes and regulations of the local government.



☎ (253) 314 5623
📱 www.clearwaysigns.com

Hotworx_Puyallup_Exterior Signs



Job Order:

Date created: Oct. 31, 2025

Date revised:

Sign Type:

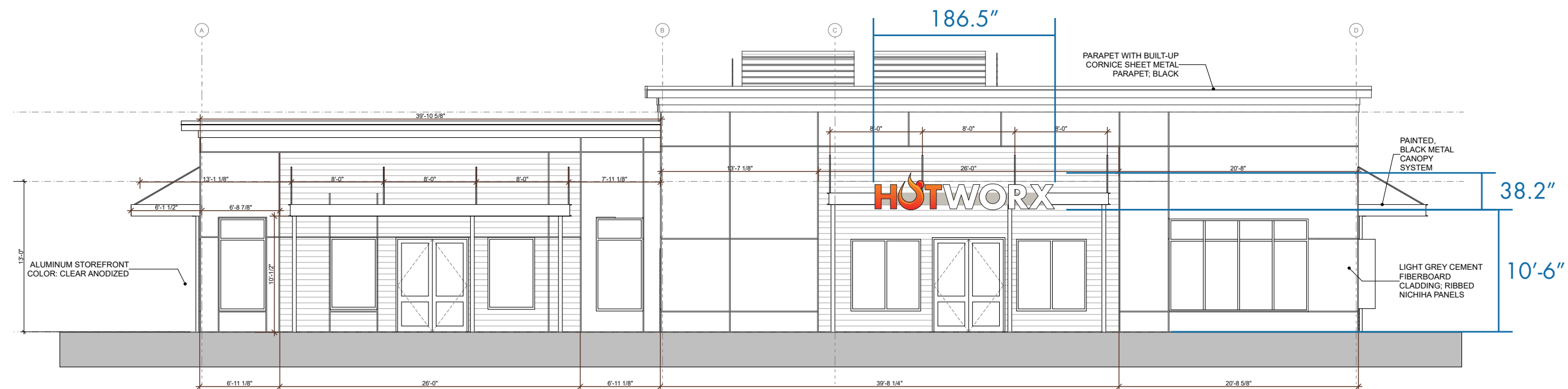
Channel Letters

Approval:

Size:

The design depicted herein is the sole property of Clearway Signs, and may not be reproduced in whole or in part without prior written consent. Actual color, letter sizes and graphic layout may vary slightly due to the properties of materials. Colors may vary depending on media substrate. This sign is intended to be installed in accordance with Article 600 of the National Electrical Code and/or other applicable local codes.

IMPOSED SIGN (SIGN A)

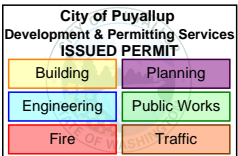


FRONT VIEW (SCALE 1:120)



(253) 314 5623
www.clearwaysigns.com

Hotworx_Puyallup_Exterior Signs



Job Order:	Date created: Oct. 31, 2025	Date revised:
Sign Type:	Channel Letters	Approval:
Size:		

The design depicted herein is the sole property of Clearway Signs, and may not be reproduced in whole or in part without prior written consent. Actual color, letter sizes and graphic layout may vary slightly due to the properties of materials. Colors may vary depending on media substrate. This sign is intended to be installed in accordance with Article 600 of the National Electrical Code and/or other applicable local codes.

SIGN DETAILS (SIGN A)

Channel Letters;
Black Trimcap; 3" Black Return
3/16" Th. Acrylic with printed vinyl applied
Raceway, painted to match the awning color
Attached to awning
Qty: 1

Separate Electrical Permit is required with the Washington State Department of Labor & Industries.
<https://lni.wa.gov/licensing-permits/electrical/electrical-permits-fees-and-inspections>
or call for Licensing Information: 1-800-647-0982

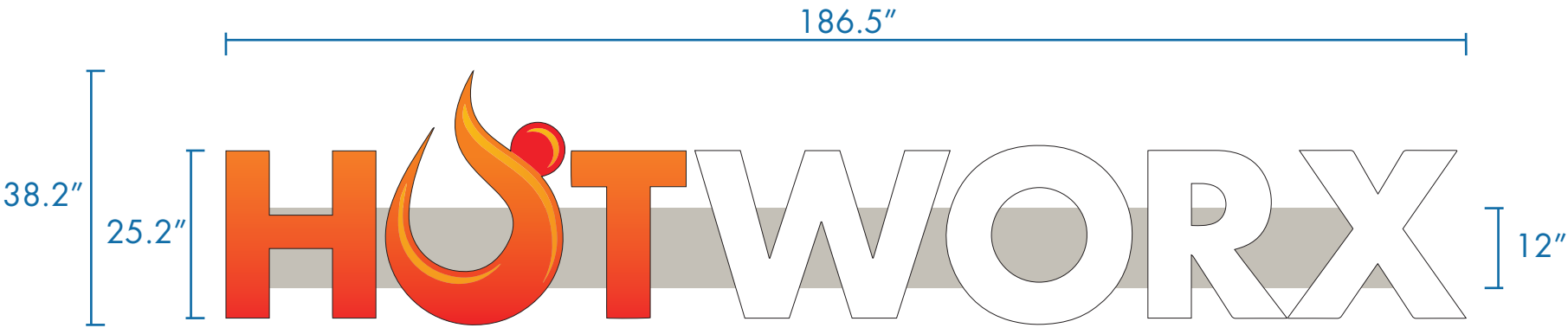
PRSG20251438

White

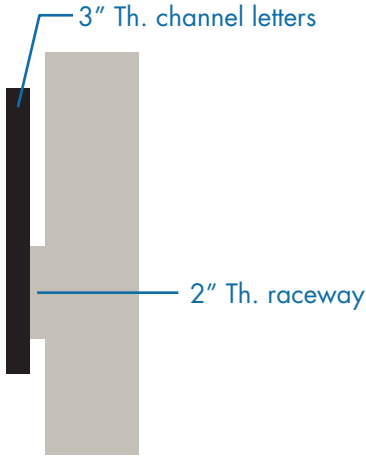
Red

Orange

Gray



FRONT VIEW (SCALE 1:25)
SIGN AREA: 49.48 SQ. FT.



SIDE VIEW (SCALE 1:25)

NOTE: RACEWAY COLOR SUBJECT TO CHANGE BASED ON ACTUAL WALL OR AWNING COLOR

MATERIAL/COLOR CALLOUT



- A1

ACRYLIC FACE WITH PRINTED VINYL
- T1

BLACK TRIM CAP
- L1

WHITE LED
- R1

BLACK ALUMINUM RETURN
- S1

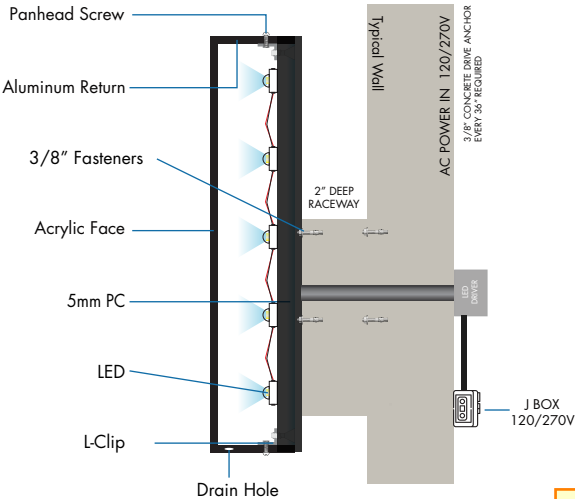
ALUMINUM RACEWAY, PAINTED GRAY

GENERAL NOTES

1. INSTALLATION OF THIS SIGN SHALL CONFORM TO THE REQUIREMENTS OF ARTICLE 600 OF NEC, UI48, UL 2161 COMPLIANT AND/OR OTHER APPLICABLE LOCAL CODES.
2. BRANCH CIRCUIT:
 - ALL BRANCH CIRCUITS FOR SIGNS MUST BE TOTALLY DEDICATED TO SIGNS (INCLUDING DEDICATED GROUND AND DEDICATED NEUTRALPER CIRCUIT).
 - SIGN CIRCUITS MUST NOT BE SHARED.
 - PROPERTY SIZED GROUND WIRE THAT CAN BE TRACKED TO THE BREAKER PANEL MUST BE PROVIDED.
3. UL AND DATA LABELS REQUIRED.
4. SIGNS ARE INTENDED TO BE INSTALLED IN ACCORDANCE WITH THE INSTALLATION INSTRUCTIONS PROVIDED WITH THE SIGN SECTIONS AND THE NEC. AUTHORITIES HAVING JURISDICTION ARE RESPONSIBLE FOR THE ULTIMATE DECISION TO APPROVE AN INSTALLATION.

ATTACHMENT DETAIL

Prior to installation:
Review anchor product's ICC-ES Report and install the product per the report. If the report states special inspection(s) are required - the final special inspection report must be on site during City inspections.



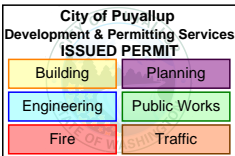
FASTENER SCHEDULE	
THRU-BOLT MOUNTING METAL STUD	3/8" THREADED ROD FOR USE IN THRU BOLT APPLICATIONS
HANGER BOLTS WOOD STUD	3/8" LAG SCREW FOR USE IN WOOD BLOCKING 1 1/2" MIN PENETRATION
MASONRY LAG BOLT MOUNTING	MASONRY EXPANSION BOLT W/ ADHESIVE EMBED 2" MIN

Attachments must be properly flashed and sealed to prevent water intrusion.



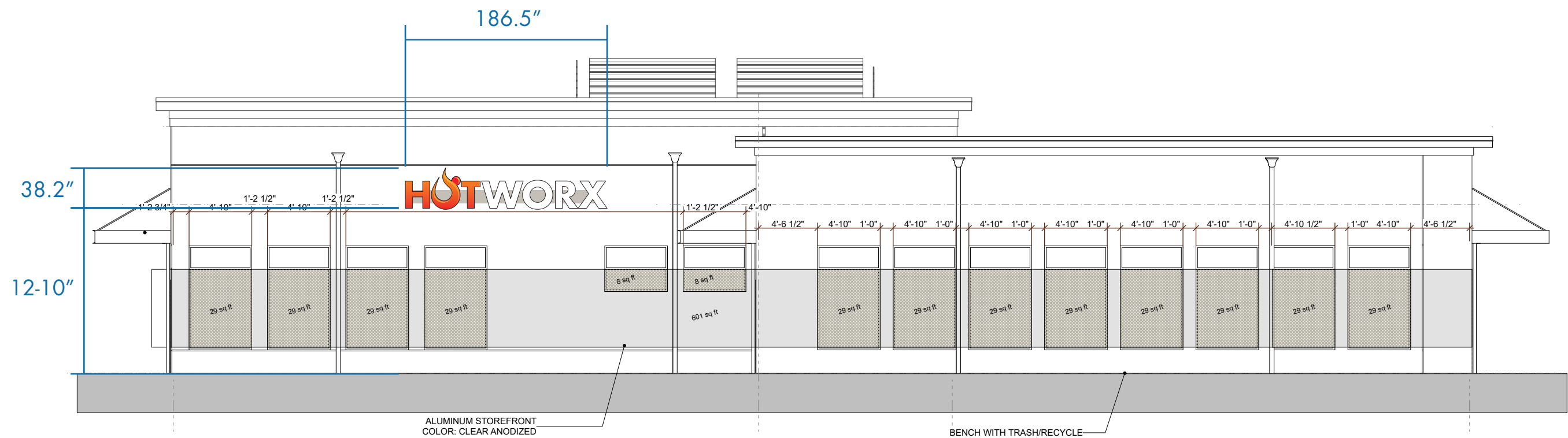
(253) 314 5623
www.clearwaysigns.com

Hotworx_Puyallup_Exterior Signs



Job Order:	Date created: Oct. 31, 2025	Date revised:
Sign Type: Channel Letters	Approval:	
Size: 186.5" W x 38.2" H (Scale 1:25)		

IMPOSED SIGN (SIGN B)

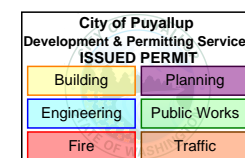


FRONT VIEW (SCALE 1:103)



☎ (253) 314 5623
📱 www.clearwaysigns.com

Hotworx_Puyallup_Exterior Signs



Job Order:

Date created: Oct. 31, 2025

Date revised:

Sign Type: Channel Letters

Approval:

Size:

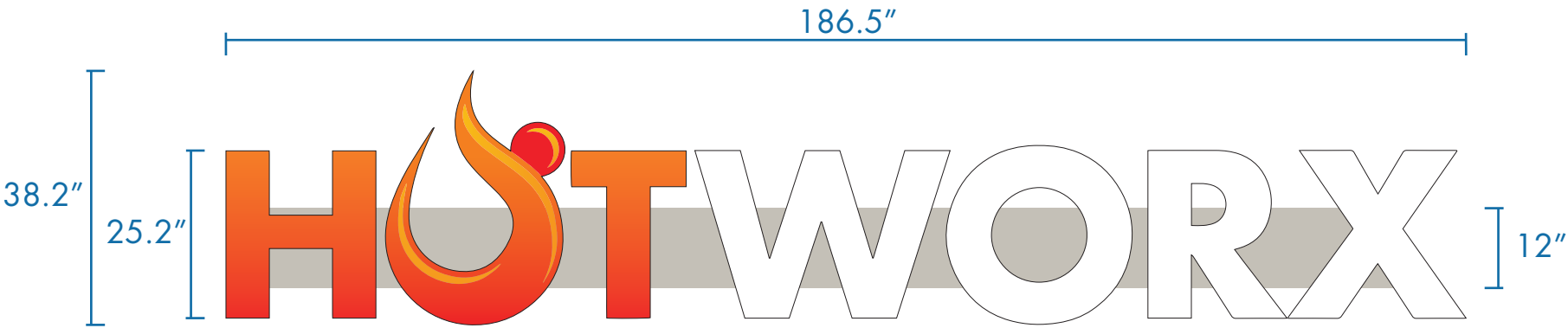
The design depicted herein is the sole property of Clearway Signs, and may not be reproduced in whole or in part without prior written consent. Actual color, letter sizes and graphic layout may vary slightly due to the properties of materials. Colors may vary depending on media substrate. This sign is intended to be installed in accordance with Article 600 of the National Electrical Code and/or other applicable local codes.

SIGN DETAILS (SIGN B)

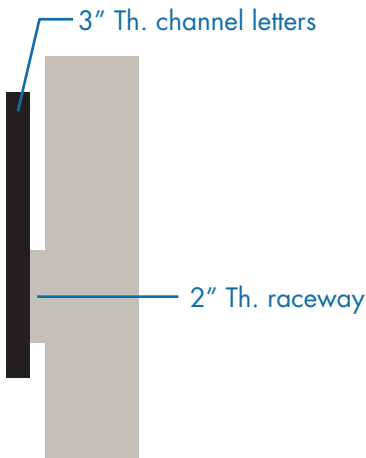
Channel Letters;
Black Trimcap; 3" Black Return
3/16" Th. Acrylic with printed vinyl applied
Raceway, painted to match the awning color
Attached to awning
Qty: 1

PRSG20251438

- White
- Red
- Orange
- Gray



FRONT VIEW (SCALE 1:25)
SIGN AREA: 49.48 SQ. FT.



SIDE VIEW (SCALE 1:25)

NOTE: RACEWAY COLOR SUBJECT TO CHANGE BASED ON ACTUAL WALL OR AWNING COLOR

MATERIAL/COLOR CALLOUT



- A1

ACRYLIC FACE WITH PRINTED VINYL
- T1

BLACK TRIM CAP
- L1

WHITE LED
- R1

BLACK ALUMINUM RETURN
- S1

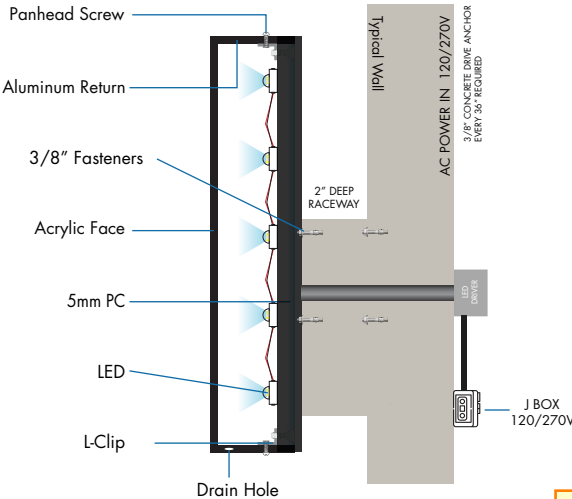
ALUMINUM RACEWAY, PAINTED GRAY

GENERAL NOTES

1. INSTALLATION OF THIS SIGN SHALL CONFORM TO THE REQUIREMENTS OF ARTICLE 600 OF NEC, UI48, UL 2161 COMPLIANT AND/OR OTHER APPLICABLE LOCAL CODES.
2. BRANCH CIRCUIT:
 - ALL BRANCH CIRCUITS FOR SIGNS MUST BE TOTALLY DEDICATED TO SIGNS (INCLUDING DEDICATED GROUND AND DEDICATED NEUTRALPER CIRCUIT).
 - SIGN CIRCUITS MUST NOT BE SHARED.
 - PROPERTY SIZED GROUND WIRE THAT CAN BE TRACKED TO THE BREAKER PANEL MUST BE PROVIDED.
3. UL AND DATA LABELS REQUIRED.
4. SIGNS ARE INTENDED TO BE INSTALLED IN ACCORDANCE WITH THE INSTALLATION INSTRUCTIONS PROVIDED WITH THE SIGN SECTIONS AND THE NEC. AUTHORITIES HAVING JURISDICTION ARE RESPONSIBLE FOR THE ULTIMATE DECISION TO APPROVE AN INSTALLATION.

ATTACHMENT DETAIL

Prior to installation:
Review anchor product's ICC-ES Report and install the product per the report. If the report states special inspection(s) are required - the final special inspection report must be on site during City inspections.



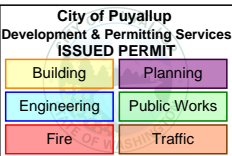
FASTENER SCHEDULE	
THRU-BOLT MOUNTING METAL STUD WALL STUD WOOD STUD	3/8" THREADED ROD FOR USE IN THRU BOLT APPLICATIONS
HANGER BOLTS	3/8" LAG SCREW FOR USE IN WOOD BLOCKING 1 1/2" MIN PENETRATION
MASONRY LAG BOLT MOUNTING	MASONRY EXPANSION BOLT W/ ADHESIVE EMBED 2" MIN

Attachments must be properly flashed and sealed to prevent water intrusion.



(253) 314 5623
www.clearwaysigns.com

Hotworx_Puyallup_Exterior Signs



Job Order:	Date created: Oct. 31, 2025	Date revised:
Sign Type: Channel Letters	Approval:	
Size: 186.5" W x 38.2" H (Scale 1:25)		