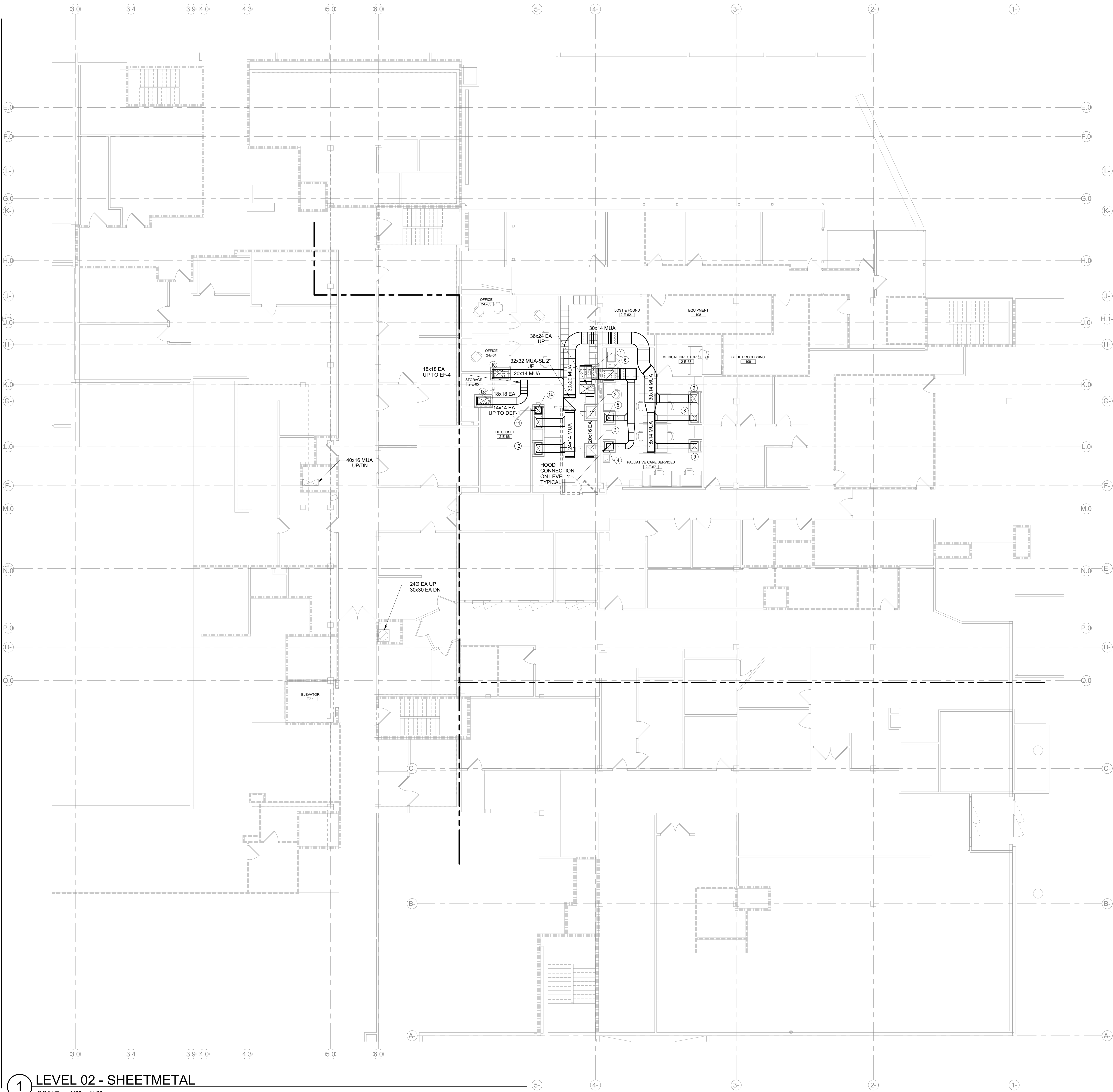


6/28/2025 2:58:44 PM Autodesk Docs\\MultiCare - Good Samaritan Hospital Kitchen Expansion\\MECH\\MultiCare Kitchen-PE2-04



1 LEVEL 02 - SHEETMETAL

SCALE: 1/8" = 1'-0"

SHEET NOTES

- ALL DUCTWORK SHOWN ON THIS PLAN SHALL BE PROTECTED BY EITHER A RATED SHAFT ENCLOSURE (BY G.C.) OR FIRE WRAPPED. THE INTEGRITY OF THE FIRE RATING SHALL BE MAINTAINED FROM THE LEVEL 2 SLAB PENETRATIONS UP THROUGH THE LEVEL 3 ROOF.
- GREASE EXHAUST DUCT ACCESS PANELS SHALL BE PROVIDED IN ACCORDANCE WITH SECTION 506.3.8 AND 506.3.9 OF THE 2021 WASHINGTON STATE MECHANICAL CODE. ACCESS PANELS SHALL BE:
 - LOCATED NOT MORE THAN 10 FEET FROM CHANGES IN DIRECTION GREATER THAN 45 DEGREES.
 - LOCATED ON THE SIDE OR TOP OF THE DUCT, NOT ON THE BOTTOM.
 - HAVE DIMENSIONS OF AT LEAST 12 INCHES BY 12 INCHES.
- RATED ACCESS PANELS FOR SHAFT ENCLOSURE PROVIDED BY G.C. ACCESS PANELS ON GREASE DUCT BY M.C. ACCESS PANELS ON SHAFT ENCLOSURE SHALL BE LOCATED AS TO PROVIDE CLEAR ACCESS TO GREASE EXHAUST CLEANOUTS.

KEY NOTES

- 16x12 EA DN. MIN SLAB OPENING 28x24.
- 12x12 EA DN. MIN SLAB OPENING 24x24.
- 12x12 EA DN. MIN SLAB OPENING 24x24.
- 10x10 EA DN. MIN SLAB OPENING 22x22.
- 12x10 EA DN. MIN SLAB OPENING 24x22.
- 12x12 EA DN. MIN SLAB OPENING 24x24.
- 20x14 MUA DN. MIN SLAB OPENING 30x20.
- 14x12 MUA DN. MIN SLAB OPENING 24x18.
- 14x12 MUA DN. MIN SLAB OPENING 24x18.
- 20x16 MUA DN. MIN SLAB OPENING 30x22.
- 20x12 MUA DN. MIN SLAB OPENING 30x18.
- 20x12 MUA DN. MIN SLAB OPENING 30x18.
- 24x14 EA DN. MIN SLAB OPENING 34x20.
- 14Ø EA UP/DN. MIN SLAB OPENING 20x20.

FIRE & SMOKE RATING LEGEND

- EXISTING 1HR FIRE BARRIER
- EXISTING 2HR FIRE BARRIER
- NEW 1HR RATED FIRE BARRIER
- NEW 2HR RATED FIRE BARRIER
- EXISTING 1HR RATED SMOKE BARRIER
- EXISTING SMOKE PARTITION
- NEW 1HR RATED SMOKE BARRIER
- NEW SMOKE PARTITION

The scope of work for the permit provided is stated as being for the installation of walk-in cooler and freezer. The plans seem to show a much more significant amount of work. Either update the plans and/or the application needed.

(Mechanical Plans and Application)

Perkins&Will

1301 5th Ave
#2300, Seattle
WA 98101
1-12063816000
www.perkinswill.com

CONSULTANTS

INMAN FOOD SERVICES
3807 Charlotte Avenue,
Nashville, Tennessee 37209
CIVIL

AHBL
1200 5th Ave #1620,
Seattle, WA 98101
STRUCTURAL

PCS
1011 Western Avenue, Suite 810
Seattle, WA 98104
CONTRACTOR

ABBOTT CONSTRUCTION
3408 1st Ave S,
Seattle, WA 98134
PLUMBING

MACDONALD MILLER
17930 International Blvd,
Suite 120, SeaTac, WA 98188
MECHANICAL

MACDONALD MILLER
17930 International Blvd,
Suite 120, SeaTac, WA 98188
ELECTRICAL

EBD SERVICES
14900 Interurban Ave S #143
Seattle, WA 98188
PROJECT MANAGER

TURNER & TOWNSEND
920 Fifth Avenue,
Seattle, WA 98104

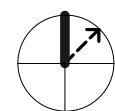
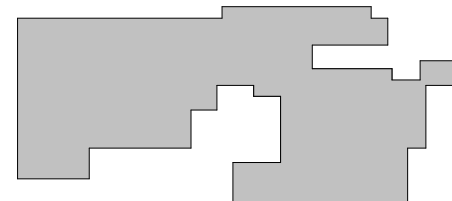


MacDonald-Miller
FACILITY SOLUTIONS
17930 Intl. Blvd, Suite, 120 SeaTac, WA 98188
Phone: 206-763-9400 www.macmiller.com

MultiCare
Good Samaritan
Hospital Kitchen
401 15th Ave SE,
Puyallup,
WA 98372

MultiCare
Good Samaritan Hospital
MULTICARE

KEY PLAN



ISSUE CHART

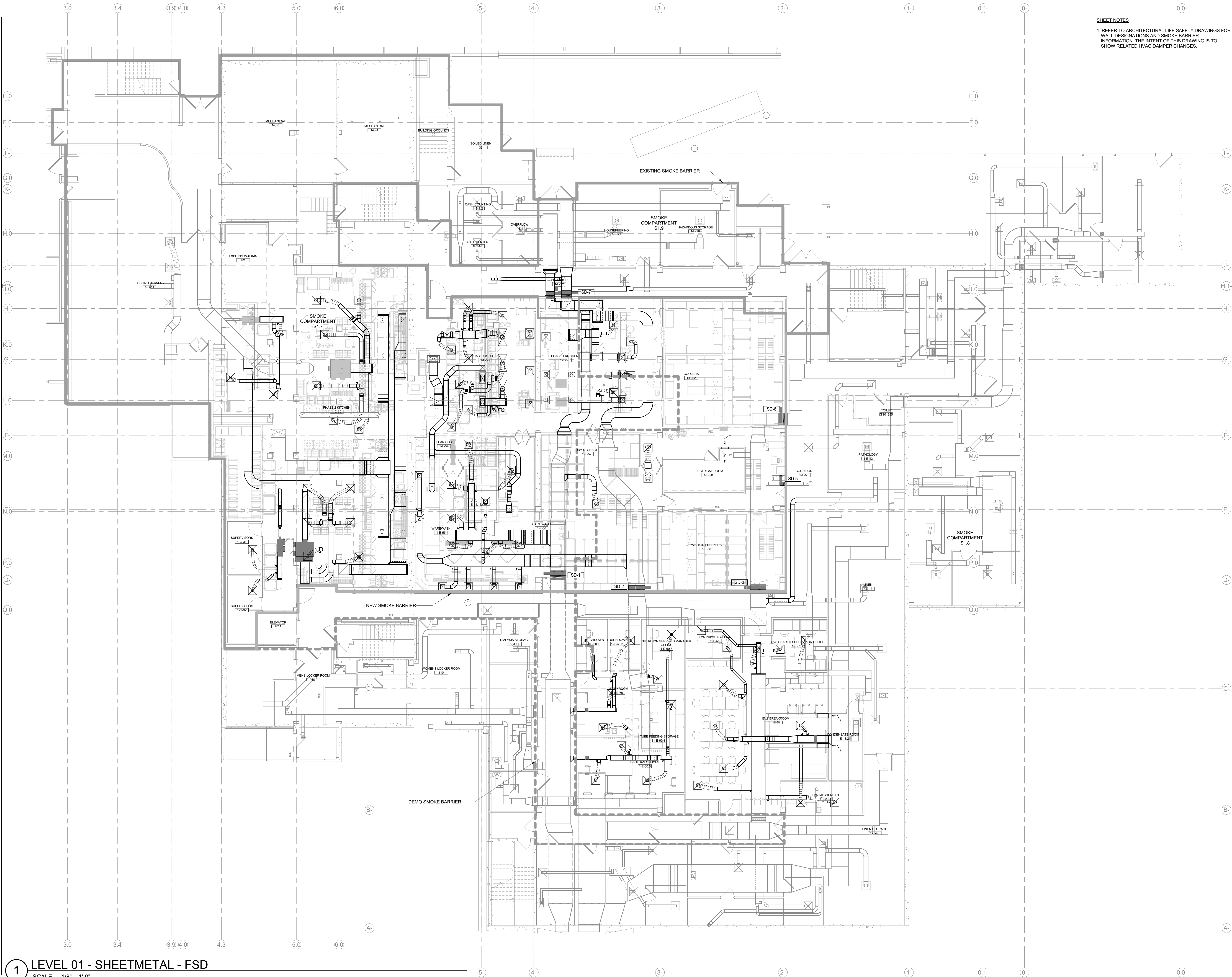
1	Revision #1	2025-x
WORK	ISSUE	DATE
Job Number	7725-4055	TITLE

LEVEL 02 FLOOR PLAN -
PHASE 1 - MECHANICAL

SHEET NUMBER

TM2.02

6/28/2025 2:59:11 PM Autodesk Docs\MultiCare - Good Samaritan Hospital Kitchen Expansion\MECH\MultiCare Kitchen-RS-04



1 LEVEL 01 - SHEETMETAL - FSD

SCALE: 1/8" = 1'-0"

SHEET NOTES

1. REFER TO ARCHITECTURAL LIFE SAFETY DRAWINGS FOR WALL DESIGNATIONS AND SMOKE BARRIER INFORMATION. THE INTENT OF THIS DRAWING IS TO SHOW RELATED HVAC DAMPER CHANGES.

Perkins&Will

1301 5th Ave
F3300, Seattle
WA 98101
T+206381 6000
www.perkinswill.com

CONSULTANTS

FOOD SERVICE

INMAN FOOD SERVICES
3807 Charlotte Avenue,
Nashville, Tennessee 37209

CIVIL

AHBL
1200 5th Ave #1620,
Seattle, WA 98101

STRUCTURAL

PCS
1011 Western Avenue, Suite 810
Seattle, WA 98104

CONTRACTOR

ABBOTT CONSTRUCTION
3408 1st Ave S,
Seattle, WA 98134

PLUMBING

MACDONALD MILLER
17930 International Blvd,
Suite 120, SeaTac, WA 98188

MECHANICAL

MACDONALD MILLER
17930 International Blvd,
Suite 120, SeaTac, WA 98188

ELECTRICAL

EBD SERVICES
14900 International Ave S #143
Seattle, WA 98188

PROJECT MANAGER

TURNER & TOWNSEND
920 Fifth Avenue,
Seattle, WA 98104



MacDonald-Miller
FACILITY SOLUTIONS
17930 Intl. Blvd, Suite 120 SeaTac, WA 98188
Phone: 206-763-9400 www.macmiller.com

MultiCare
Good Samaritan
Hospital Kitchen

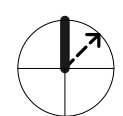
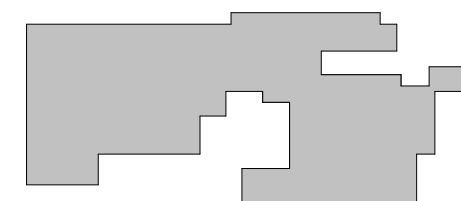
401 15th Ave SE,
Puyallup,
WA 98372

MultiCare
Good Samaritan Hospital

MULTICARE

100% CD SET 06/30/2025

KEY PLAN



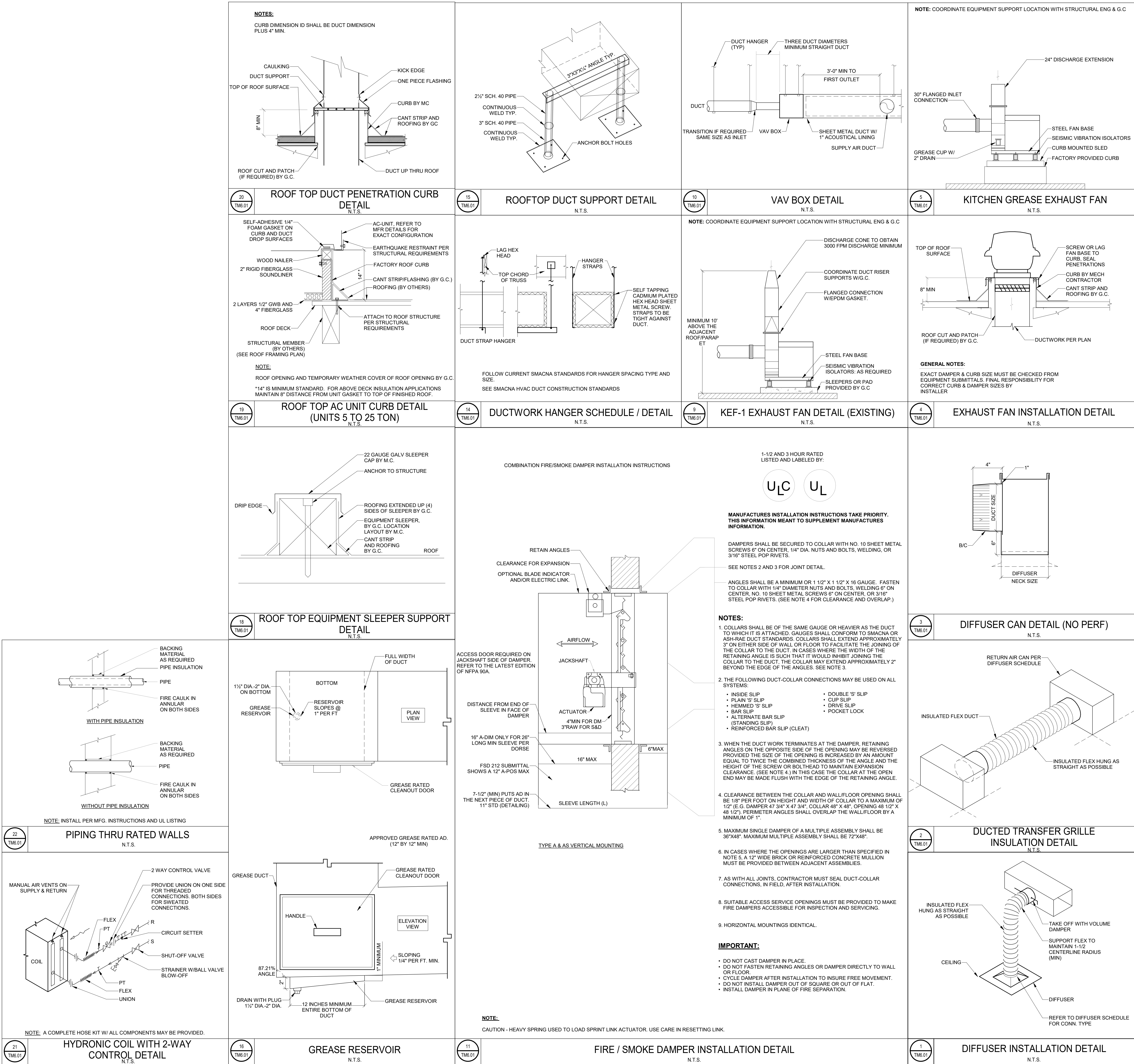
ISSUE CHART

1	Revision #1	2025-x
WEEK	ISSUE	DATE
Job Number	7725-4055	TITLE

LEVEL 01 SMOKE
CONTROL FLOOR PLAN
- MECHANICAL

SHEET NUMBER

TM3.01



6/28/2025 2:58:07 PM Autodesk Docs\MultiCare - Good Samaritan Hospital Kitchen Expansion\MECH\MultiCare Kitchen-R214

1

LEVEL 01 - SHEETMETAL

SCALE: 1/8" = 1'-0"

E.0

F.0

L

G.0

K

H.0

J

J.0

H

K.0

G

L.0

F

M.0

N.0

P.0

D

Q.0

E.0

F.0

L

G.0

K

H.0

J

J.0

H

K.0

G

L.0

F

M.0

N.0

P.0

D

Q.0

SHEET NOTES

1. FIELD TO ADJUST AIRFLOW FROM EXISTING DIFFUSERS AND GRILLES TO ENSURE 2 AIR CHANGES FOR TEMPORARY LINEN AND DRY FOOD STORAGE AREAS OF PHASE 0. REFER TO ARCHITECTURAL PLANS FOR TEMP DRY STORAGE AND TEMP LINEN LOCATIONS. REFER TO ROOM CONDITIONING SCHEDULE ON TM0.02 FOR REQUIRED AIRFLOW TO TEMPORARY ROOMS.

FIRE & SMOKE RATING LEGEND

EXISTING 1HR FIRE BARRIER

EXISTING 2HR FIRE BARRIER

NEW 1HR RATED FIRE BARRIER

NEW 2HR RATED FIRE BARRIER

EXISTING 1HR RATED SMOKE BARRIER

EXISTING SMOKE PARTITION

NEW 1HR RATED SMOKE BARRIER

NEW SMOKE PARTITION

Perkins&Will

1301 5th Ave
#2300, Seattle
WA 98101
P: 206.461.6000
www.perkinswill.com

CONSULTANTS

FOOD SERVICE

INMAN FOOD SERVICES
3807 Charlotte Avenue,
Nashville, Tennessee 37209
CIVIL

AHBL

1200 5th Ave #1620,
Seattle, WA 98101

STRUCTURAL

PCS

1011 Western Avenue, Suite 810
Seattle WA 98104

CONTRACTOR

ABBOTT CONSTRUCTION
3408 1st Ave S,
Seattle, WA 98134

PLUMBING

MACDONALD MILLER

17930 International Blvd,
Suite 120, SeaTac, WA 98188

MECHANICAL

MACDONALD MILLER

17930 International Blvd,
Suite 120, SeaTac, WA 98188

ELECTRICAL

EBD SERVICES
14900 Interurban Ave S #143
Seattle, WA 98188

PROJECT MANAGER

TURNER & TOWNSEND

920 Fifth Avenue,
Seattle, WA 98104



MacDonald-Miller

FACILITY SOLUTIONS

17930 Intl. Blvd, Suite 120 SeaTac, WA 98188
Phone: 206-763-9400 www.macmiller.com

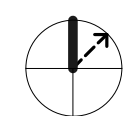
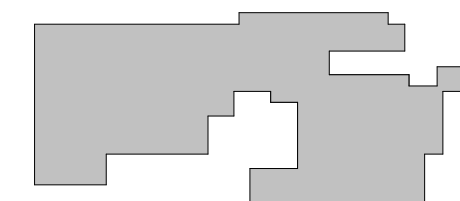
MultiCare Good Samaritan Hospital Kitchen

401 15th Ave SE,
Puyallup,
WA 98372

MultiCare Good Samaritan Hospital

MULTICARE

KEY PLAN



ISSUE CHART

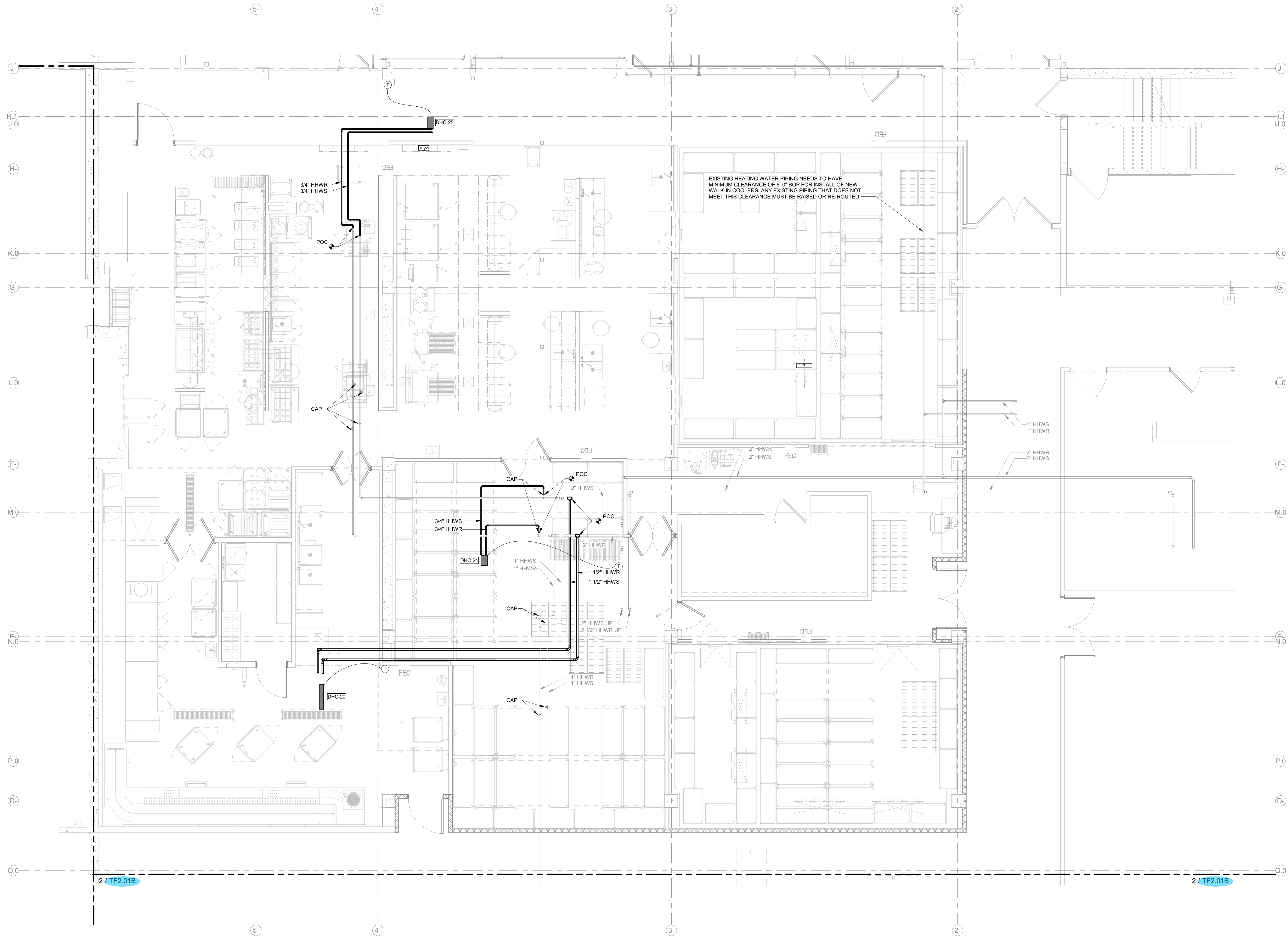
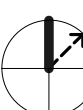
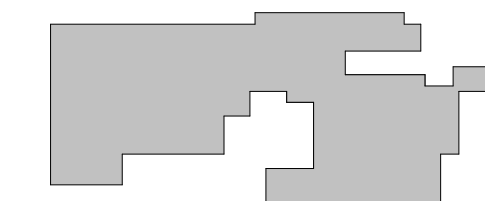
1	Revision #1	2025-x
WWS	ISSUE	DATE
Job Number	7725-4055	TITLE

LEVEL 01 OVERALL FLOOR PLAN - MECHANICAL

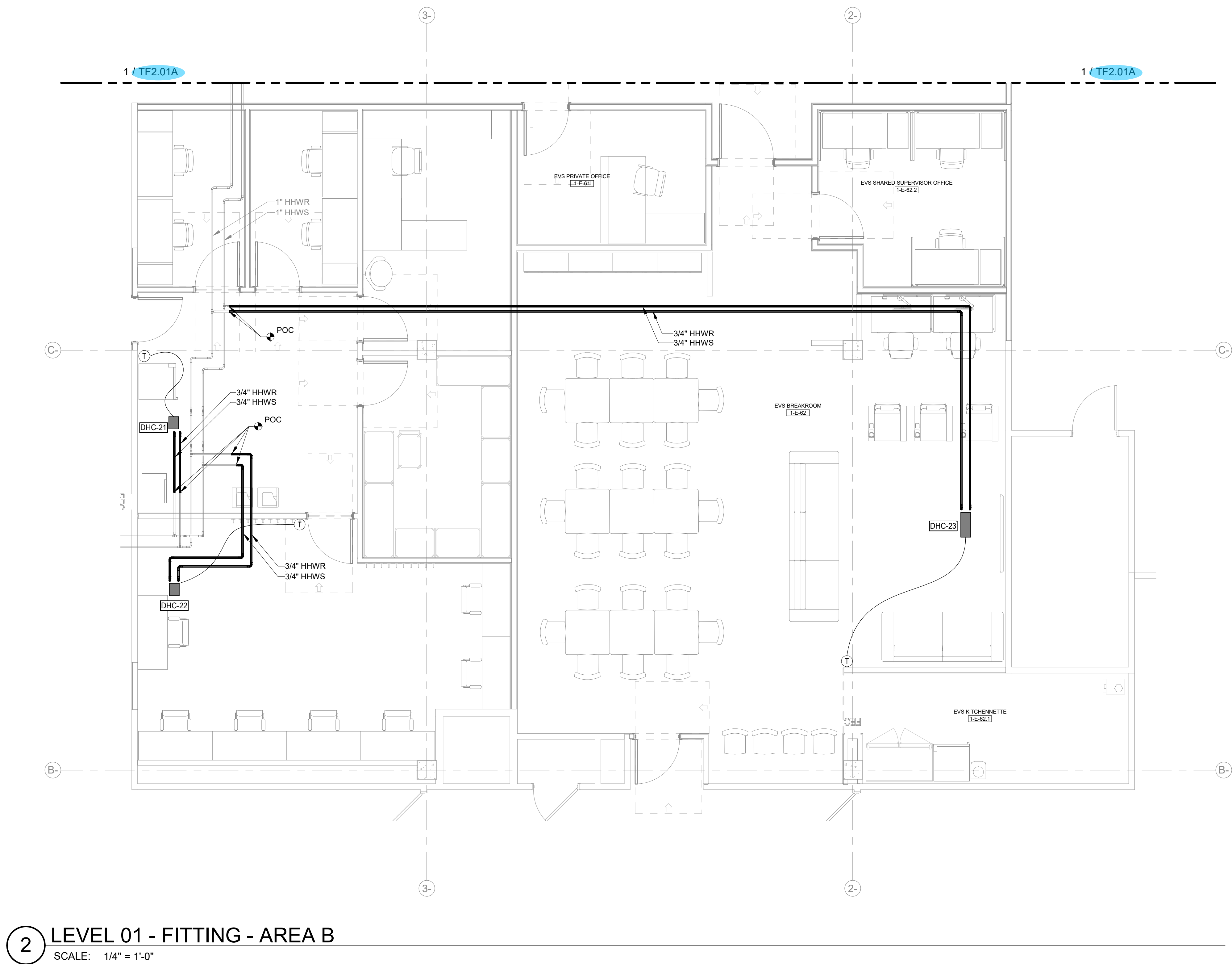
SHEET NUMBER

TM2.01

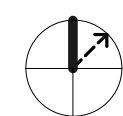
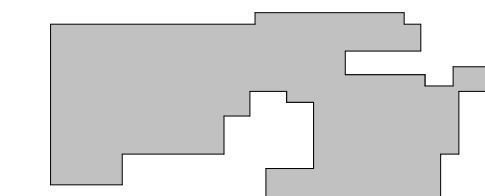
100% CD SET 06/30/2025

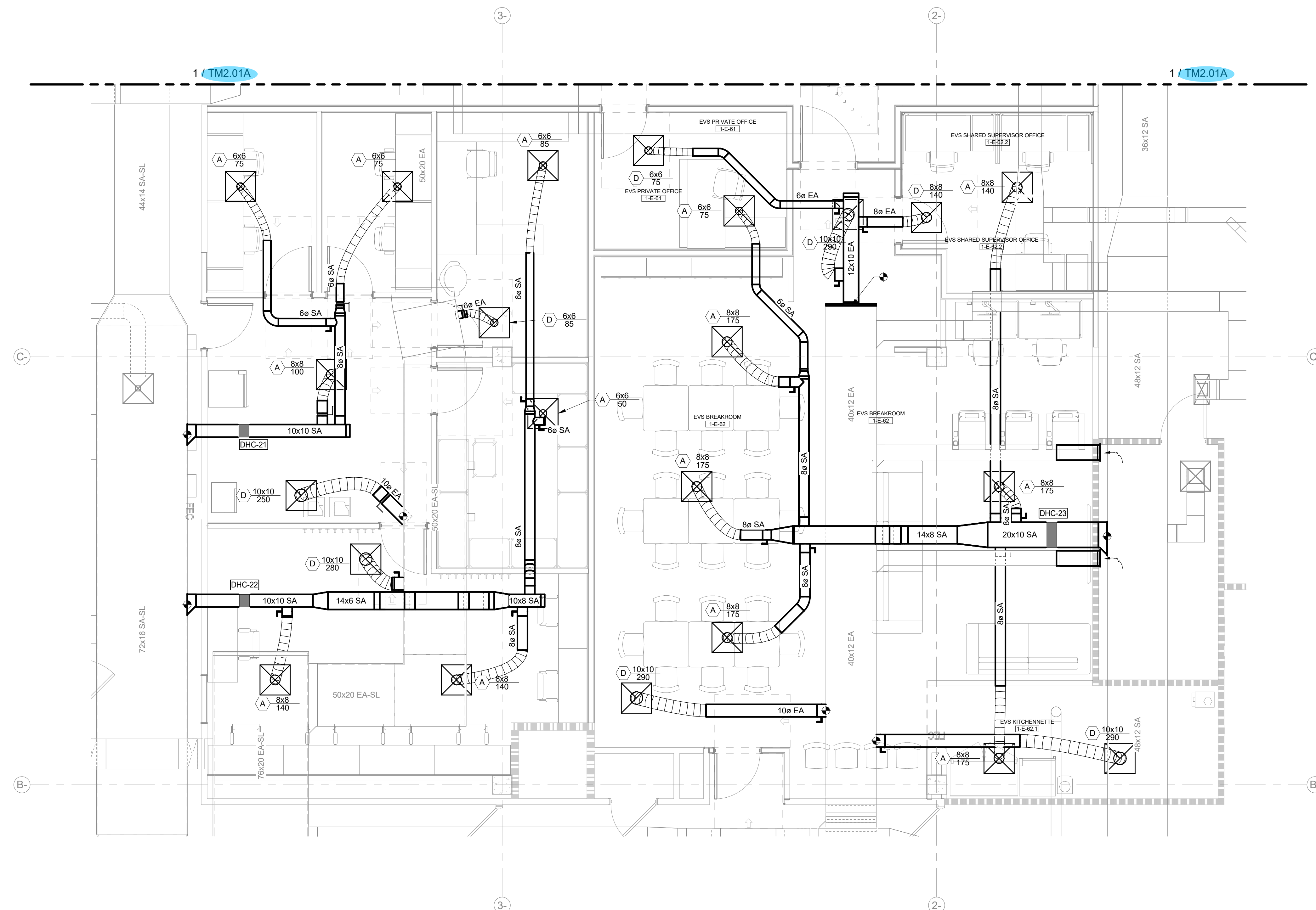
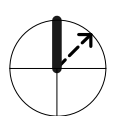
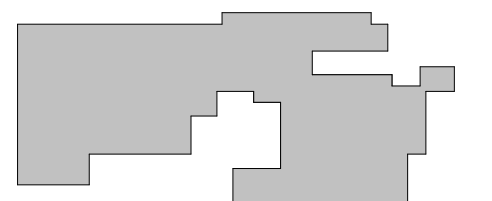


1 LEVEL 01 - FITTING - AREA A
SCALE: 1/4" = 1'-0"



2 LEVEL 01 - FITTING - AREA B
SCALE: 1/4" = 1'-0"





2 LEVEL 01 - SHEETMETAL - AREA B
SCALE: 1/4" = 1'-0"

1	Revision #1	2025-x x-xx
MARK	ISSUE	DATE

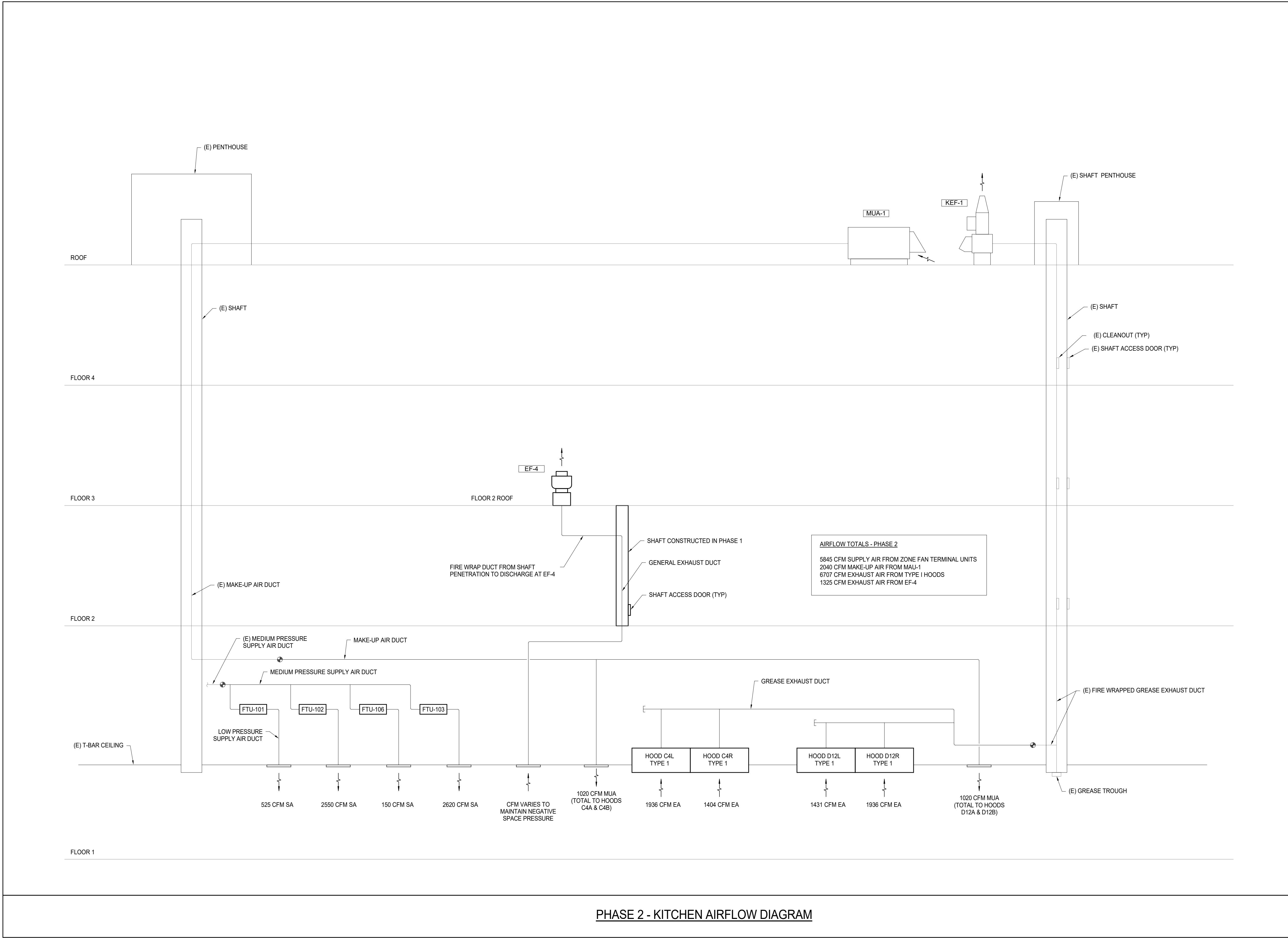
Job Number 7725-4055

TITLE

**LEVEL 01 FLOOR PLAN -
PHASE 1 AREA B -
MECHANICAL**

SHEET NUMBER

TM2.01B



SHEET NOTES

1. EXISTING KITCHEN EQUIPMENT MAU-1 AND KEF-1 ARE TO BE REUSED ALONG WITH EXISTING DUCTWORK AND SHAFTS.
- A. GC TO CONFIRM EXISTING SHAFTS ARE SUITABLE FOR REUSE. SHAFTS FOUND TO BE IN POOR CONDITION MUST BE REPAIRED TO MAINTAIN REQUIRED FIRE RATING.
- B. MC TO CONFIRM EXISTING DUCTWORK IS SUITABLE FOR REUSE. DUCTS FOUND TO BE IN POOR CONDITION MUST BE REPAIRED OR REPLACED TO MAINTAIN PRESSURE CLASS AND MINIMIZE LEAKAGE.

Perkins&Will

1301 5th Ave
#2300, Seattle
WA 98101
T+12063816000
www.perkinswill.com

CONSULTANTS

FOOD SERVICE

INMAN FOOD SERVICES
3807 Charlotte Avenue,
Nashville, Tennessee 37209
CIVIL

AHBL
1200 5th Ave #1620,
Seattle, WA 98101
STRUCTURAL

PCS
1011 Western Avenue, Suite 810
Seattle WA 98104

CONTRACTOR

ABBOTT CONSTRUCTION
3408 1st Ave S,
Seattle, WA 98134
PLUMBING

MACDONALD MILLER
17930 International Blvd,
Suite 120, SeaTac, WA 98188
MECHANICAL

MACDONALD MILLER
17930 International Blvd,
Suite 120, SeaTac, WA 98188
ELECTRICAL

EBD SERVICES
14900 Interurban Ave S #143
Seattle, WA 98188
PROJECT MANAGER

TURNER & TOWNSEND
920 Fifth Avenue,
Seattle, WA, 98104

MacDonald-Miller
FACILITY SOLUTIONS
17930 Intl. Blvd, Suite, 120 SeaTac, WA 98188
Phone: 206-763-9400 www.macmiller.com

MultiCare
Good Samaritan
Hospital Kitchen
401 15th Ave SE,
Puyallup,
WA 98372

MultiCare
Good Samaritan Hospital
MULTICARE

KEY PLAN

ISSUE CHART

1	Revision #1	2025-x
WORK	ISSUE	DATE
Job Number	7725-4055	TITLE

AIRFLOW DIAGRAMS -
PHASE 2 - MECHANICAL

SHEET NUMBER

TM4.02

DAMPER SCHEDULE & LEGEND				
TAG	DESCRIPTION	NOTES	TAG	DESCRIPTION
FD-1 (1) 1/2	1 1/2 HOUR DYNAMIC FIRE DAMPER, CURTAIN STYLE, VERTICAL OR HORIZONTAL, 165°F FUSIBLE LINK, BLADE IN AIR STREAM, 4000 FPM UP TO 24X24 VERTICAL, 2000 FPM ALL OTHERS, UL555, GREENHECK RFD-150 TYPE A OR EQUAL.		SD (S)	SMOKE DAMPER, SEE MOTORIZED DAMPER SCHEDULE.
BDD (BD)	BACKRAFT DAMPER, GREENHECK WD 330 (VERT) OR WD-100 (HORIZONTAL) OR EQUAL.		MD (M)	MOTORIZED CONTROL DAMPER, SEE MOTORIZED DAMPER SCHEDULE.
L	VOLUME DAMPER, SHOP FABRICATED, UNLOCKING QUADRANT.		FSD-1 (1) 1/2	1 1/2 HOUR FIRESMOKE DAMPER, SEE MOTORIZED DAMPER SCHEDULE.
RD-1 (RD)	REMOTE OPERATED VOLUME DAMPER, 2000 FPM, UP TO 1" WG, BY ACTUATOR TO RJ11 REMOTE CONNECTION, GREENHECK RBD-90.		FSD-2 (S)	3 HOUR RATED FIRE SMOKE DAMPER, SEE MOTORIZED DAMPER SCHEDULE.
RD-2 (RD)	REMOTE OPERATED VOLUME DAMPER, 2000 FPM, UP TO 1" WG, BY ACTUATOR TO RJ11 REMOTE CONNECTION, GREENHECK RBD-10.			
NOTES				

MOTORIZED DAMPER SCHEDULE											
UNIT NO.	MFR. & MODEL NO.	MOUNTING POSITION	FIRE RATING	LEAKAGE CLASS	ACTUATOR	FAIL	VOLT/PH	TYPE	BY		NOTES
SD-1	GREENHECK SMD-201	VERT	-	-	CLOSE	120V/1	2 POSITION	EC			1
SD-2	GREENHECK SMD-201	VERT	-	-	CLOSE	120V/1	2 POSITION	EC			1
SD-3	GREENHECK SMD-201	VERT	-	-	CLOSE	120V/1	2 POSITION	EC			1
SD-4	GREENHECK SMD-201	VERT	-	-	CLOSE	120V/1	2 POSITION	EC			1
SD-5	GREENHECK SMD-201	VERT	-	-	CLOSE	120V/1	2 POSITION	EC			1
SD-6	GREENHECK SMD-201	VERT	-	-	CLOSE	120V/1	2 POSITION	EC			1
SD-7	GREENHECK SMD-201	VERT	-	-	CLOSE	120V/1	2 POSITION	EC			1
SD-8	GREENHECK SMD-201	VERT	-	-	CLOSE	120V/1	2 POSITION	EC			1
MD-1	GREENHECK VCD-23	VERT	-	-	IN-PLACE	24V	2 POSITION	CC			2
NOTES:											
1. LIFE-SAFETY MOTORIZED DAMPER											
- TWO POSITION WITH SPRING RETURN											
- OPEN WHEN BLDG IN FIRE ALARM MODE (BY FIRE ALARM CONTRACTOR), NORMALLY (SPRING) OPEN/POWERED CLOSED											
- 120V DAMPER ACTUATOR, MODEL BASED ON TORQUE REQ'S FOR DAMPER SIZE & LOCATED EXTERNAL TO DAMPER SLEEVE (UNO)											
- INTERLOCK WITH FIRE ALARM SYSTEM BY FIRE ALARM CONTRACTOR											
- PROVIDED WITH OPEN/CLOSED INDICATOR											
- EMERGENCY POWER REQUIRED.											
- UL 555S LISTED											
2. MOTORIZED CONTROL DAMPER											
- 24V DAMPER ACTUATOR BY CONTROLS CONTRACTOR, LOCATED EXTERNAL TO DAMPER SLEEVE (UNO)											

DIFFUSER/GRILLE SCHEDULE				
SYMBOL	MANUFACTURER & MODEL NUMBER	SIZE	TYPE	NOTES
(A) SIZE _____	TITUS MCD-3	AS NOTED	T-BAR MOUNT MODULAR CORE DIFFUSER	BORDER TYPE 3, WHITE FINISH
(B) SIZE _____	TITUS MCD-1	AS NOTED	SURFACE MOUNT MOD CORE DIFFUSER	BORDER TYPE 1, WHITE FINISH
(C) SIZE _____	TITUS 350RL	AS NOTED	SURFACE MOUNT RET/EXH GRILLE	BORDER TYPE 1, WHITE FINISH
(D) SIZE _____	TITUS 50F	AS NOTED	T-BAR LAY-IN EGGCRATE (RETURN/EXH)	BORDER TYPE 3, WHITE FINISH
(E) SIZE _____	HALTON KCD	AS NOTED	T-BAR MOUNT KITCHEN CEILING DIFFUSER	

DUCTWORK SCHEDULE						
SERVICE / USAGE /	LOCATION	MATERIAL	WORKING PRESSURE (IN. WC)	SMACNA PRESSURE CLASS (IN. WC)	SMACNA SEAL CLASS	NOTES
MEDIUM PRESSURE SUPPLY AIR	BETWEEN AHU AND TERMINAL UNITS	GALV. STEEL	2.5	4	A	1
LOW PRESSURE SUPPLY AIR	FROM TERMINAL/FAN COILS UNITS TO GRD'S	GALV. STEEL	1	2	B	1
FLEXIBLE DUCT	CONN TO GRD'S	PREINSUL. FLEX	0.5	RATED "6"-, "1"	NA	2
RETURN AIR	FROM GRD'S TO AHU & FULS	GALV. STEEL	1	2	B	1
TRANSFER AIR	FROM GRD TO GRD	GALV. STEEL	0.05	1	B	1
GENERAL EXHAUST	FROM GRD TO FAN AND AMBIENT	GALV. STEEL	-1	-2	B	1
GREASE EXHAUST	FROM HOOD TO FAN	16 GA WELDED STL	-2	-4	A	4.5
DISHWASHER & POTWASH EXHAUST	FROM HOOD TO FAN	STAINLESS STEEL	-1	-2	A	5.8

DUCTWORK INSULATION SCHEDULE						
SERVICE	LOCATION	INSULATION TYPE	THICKNESS	R-VALUE	NOTES	
OUTDOOR AIR ≥ 2800 CFM	CONDITIONED SPACE AND UPSTREAM OF AUTOMATIC SHUTOFF DAMPER	WRAP	6"	R-16	9	
OUTDOOR AIR ≥ 2800 CFM	CONDITIONED SPACE AND DOWNSTREAM OF AUTOMATIC SHUTOFF DAMPER	WRAP	3"	R-8	9	
OUTDOOR AIR < 2800 CFM	CONDITIONED SPACE	WRAP	3"	R-7	9	
SUPPLY OR RETURN AIR	OUTSIDE OF THE BUILDING	LINING	2"	R-8	10,11	
SUPPLY OR RETURN AIR	UNCONDITIONED SPACE OUTSIDE OF THE CONDITIONED BUILDING ENVELOPE	LINING OR WRAP	2"	R-6	10	
SUPPLY OR RETURN AIR	UNCONDITIONED SPACE AND CONVEYING AIR WITHIN 15 DEG F OF SPACE TEMPERATURE (I.E. SUPPLY OR RETURN AIR FLEXINGS)	WRAP	1"	R-3.3	9	
SUPPLY AIR	CONDITIONED SPACE AND CONVEYING AIR LESS THAN 55F OR GREATER THAN 105F	WRAP	1"	R-3.3	9	
SUPPLY AIR	CONDITIONED SPACE AND CONVEYING AIR BETWEEN 55F AND 105F	NONE	NONE	NONE		
RETURN, RELIEF OR EXHAUST AIR	CONDITIONED SPACE, DOWNSTREAM OF AUTOMATIC SHUTOFF DAMPER	WRAP	3"	R-8	9	
RETURN, RELIEF OR EXHAUST AIR	CONDITIONED SPACE, DOWNSTREAM OF AUTOMATIC SHUTOFF DAMPER	WRAP	6"	R-16	9	
EXHAUST AIR	CONDITIONED SPACE, UPSTREAM OF ENERGY RECOVERY DEVICE OR AUTOMATIC SHUTOFF DAMPER	NONE	NONE	NONE		
EXHAUST AIR	UNCONDITIONED SPACE OUTSIDE OF THE CONDITIONED BUILDING ENVELOPE, UPSTREAM OF ENERGY RECOVERY DEVICE	LINING OR WRAP	2"	R-6	10	
EXHAUST AIR	OUTSIDE OF THE BUILDING, UPSTREAM OF ENERGY RECOVERY DEVICE	LINING	2"	R-8	10,11	

- NOTES:
- SHEET METAL GAUGES AND FITTINGS PER SMACNA AND MACDONALD-MILLER DUCT CONSTRUCTION STANDARDS.
 - THERMAFLEX "GKM" OR EQUAL WITH 12 FOOT MAXIMUM LENGTH.
 - INSTALL PER MFG. GUIDELINES AND INSTRUCTIONS.
 - UL 300 HOOD TO BE PROVIDED IN KITCHEN BY KITCHEN CONSULTANT. DUCTWORK SPRINKLERS NOT REQUIRED.
 - SLOPE AT 1/4" PER FOOT BACK TO SOURCE.
 - SEAMS TO BE CAULKED OR WELDED TO PREVENT CONDENSATION FROM LEAKING THROUGH.
 - INSULATE ONLY SINGLE WALL METAL DUCT IN ACCESSIBLE LOCATIONS UP TO 7' AFF.
 - DUCT SYSTEMS GREATER THAN 3" WC SHALL BE LEAK TESTED IN ACCORDANCE WITH W540 C10.2.3
 - WRAP INSULATION WEIGHT = 0.75 PCF
 - WRAP INSULATION WEIGHT = 1 PCF
 - INSULATION EXPOSED TO WEATHER SHALL BE PROTECTED FROM DAMAGE INCLUDING THAT DUE TO SUNLIGHT, MOISTURE, EQUIPMENT MAINTENANCE AND WIND, AND SHALL PROVIDE SHIELDING FROM SOLAR RADIATION THAT CAN CAUSE DEGRADATION OF THE MATERIAL.

GENERAL NOTES:

- INSULATION THICKNESS SHOWN ABOVE IS EQUAL TO TOTAL MINIMUM REQUIRED R-VALUE. ALTERNATE INSULATION WITH EQUAL R-VALUE IS ALLOWED.

- All CONCEALED DUCTWORK TO BE PER MMFS EXPOSURE 0 (SEALANT, LABELS AND OTHER ITEMS VISIBLE ON OUTSIDE OF DUCTWORK, MAY HAVE SCRATCHES AND MINOR DENTS).
- All INTERIOR EXPOSED DUCTWORK WITHIN OCCUPIED AREAS TO BE PER MMFS EXPOSURE 1 (NO VISIBLE SEALANT, LABELS, DENTS OR WRITING, EXTERIOR WELDS CLEANED AND PAINTED).

MECHANICAL GENERAL ABBREVIATIONS					
ABBR	FULL NAME	ABBR	FULL NAME	ABBR	FULL NAME
AC	AIR CONDITIONING UNIT	EWI	ENTERING WATER TEMPERATURE	NO	NORMALLY OPEN
AFF	ABOVE FINISHED FLOOR	FCU	FAN COIL UNIT	NON	NOMINAL
AHU	AIR HANDLING UNIT	FD	FIRE DAMPER	NTS	NOT TO SCALE
AL	ALUMINUM	FIA	FULL LOAD AMPS	OD	OPPOSITE BLADE DAMPER
BAS	BUILDING AUTOMATION SYSTEM	FIB	FIRE ON BOTTOM	OD	OUTSIDE DIMENSION
BDD	BACK DRAFT DAMPER	FOT	FLAT ON TOP	PCD	POINT OF CONNECTION
BI	BLACK IRON	FSD	FIRE SMOKE DAMPER	PRV	PRESSURE REDUCING VALVE
BOD	BOTTOM OF DUCT	GALV	GALVANIZED	PVC	POLYVINYL CHLORIDE
BOTT	BOTTOM	GC	GENERAL CONTRACTOR	REQ'D	REQUIRED
BTU	BRITISH THERMAL UNITS	GENX	GENERAL EXHAUST	RHS	REDUCED PRESSURE BACKFLOW ASSY
BTUH	BTU/HOUR THERMAL UNITS PER HOUR	GLVNL	GALVANNEAL	RTU	ROOFTOP UNIT
CAT1	CATEGORY 1 AIR VENT	GPM	GALLONS PER MINUTE	SA	SUPPLY AIR
CAT4	CATEGORY FOUR VENT	GREASE	GREASE DUCT	SD	SMOKE DAMPER
CFM	CUBIC FEET PER MINUTE	GWB	GYPSSUM WALL BOARD	SOUND	SOUND LINE
CPVC	CPVC MATERIAL	HP	HORSE POWER, HEAT PUMP	SM	SHEET METAL
DB	DUCTBOARD	HVAC	HEATING, VENTILATION AND AIR COND.	SP	STATIC PRESSURE
DC	DIRECT EXHAUST CONTROLS	HX	HEAT EXCHANGER	SS	STAINLESS STEEL
DEMO	DEMOLISH	I	INSIDE DIMENSION	SUSP	SUSPENDED
DLS	DIFFERENTIAL PRESSURE	LAT	LEAVING AIR TEMPERATURE	T	THERMAL
DPM	DIFFERENTIAL PRESSURE MONITOR	LBS	POUNDS	TOD	TOP OF DUCT
DPF	DIFFUSER	LWT	LEAVING WATER TEMPERATURE	TV	TURNING VANES
DMPR	DAMPEN	MAT	MIXED AIR TEMPERATURE	TYP	TYPICAL
DN	DOWN	MBH	ONE THOUSAND BTUH	UNV	UNLESS NOTED OTHERWISE
EXISTING	EXISTING	MCA	MINIMUM CIRCUIT AMPACITY	VAV	VARIABLE AIR VOLUME
EAT	ENTERING AIR TEMPERATURE	MD	MOTORIZED DAMPER	VO	VOLUME DAMPER
EGRATE	EGGCRATE	MFR	MANUFACTURER	W	WATER
EER	ENERGY EFFICIENCY RATIO	NGI	NATURAL GAS HIGH PRESS	WI	WITH INSULATION
EXHAUST FAN	EXHAUST FAN	NC	NORMALLY CLOSED	WLD	WELDED
ELEV	ELEVATION	NIC	NOT IN CONTRACT	Ø	VOLTAGE PHASE & DUCT DIAMETER
ESP	EXTERNAL STATIC PRESSURE				

PIPING SYSTEM ABBREVIATIONS			
ABBR	FULL NAME	ABBR	FULL NAME
C	CONDENSATE INDIRECT DRAIN	GLWR	GLYCOL WATER RETURN
CA	AIR COMPRESSED	GLWS	GLYCOL WATER SUPPLY
CDWR	CONDENSER WATER RETURN	HHWR	HEATING HOT WATER RETURN
CDWS	CONDENSER WATER SUPPLY	HHS	HEATING HOT WATER SUPPLY
CHRV	CHILLER RELIEF VENT	HPC	STEAM CONDENSATE HIGH PRESS
CHWR	CHILLED WATER RETURN	HPS	STEAM HIGH PRESS
CHWS	CHILLED WATER SUPPLY	HRR	HEAT RECOVERY RETURN
CJN-STU	CLEAN/STAINLESS	HRSU	HEAT RECOVERY SUPPLY
CLR	CLOSED LOOP WATER RETURN	LPC	STEAM CONDENSATE LOW PRESS
COMB-PVC	CLOSED LOOP WATER SUPPLY	LPS	STEAM LOW PRESS
CRYV	CRYO VENT	LTCR	CHILLED WATER (LOW TEMP) RETURN
DTWS	DUAL TEMP WATER SUPPLY	LTCV	CHILLED WATER (LOW TEMP) VENT
DTWR	DUAL TEMP WATER RETURN	MPC	STEAM CONDENSATE MEDIUM PRESS
FCC	FUEL OIL SECONDARY CONTAINMENT	MPS	STEAM MEDIUM PRESS
FDF	FUEL OIL FILL	MJW	MAKEUP WATER
FOR	FUEL OIL RETURN	NC-CONDUIT	NATURAL GAS CONDUIT
FOS	FUEL OIL SUPPLY	NGH	NATURAL GAS HIGH PRESS
FOV	FUEL OIL VENTS	NGI	NATURAL GAS LOW PRESS
GENX	GENERATOR EXHAUST	NGM	NATURAL GAS MEDIUM PRESS

HVAC SYSTEM ABBREVIATIONS			
ABBR	FULL NAME	ABBR	FULL NAME
COMB-GALV	COMBUSTION AIR	EA AL	EXHAUST ALUMINUM
SA KOOL	SUPPLY AIR LP KOOLDUCT	EA SS	EXHAUST ALUMINUM WELDED
SA AL	SUPPLY AIR LP ALUMINUM	EA GALV WELD	EXHAUST GALV WELDED
SA SS	SUPPLY AIR LP SS 304 2B	EA GLVNL WELD	EXHAUST GALVANNEAL WELDED
SA AL WELD	SUPPLY AIR LP ALUMINUM WELDED	EA GALV WELD	EXHAUST GALV WELDED
SA GALV WELD	SUPPLY AIR MP GALV WELDED	EA BI GREASE	EXHAUST GREASE BLACK IRON WELD
SA GALV WELD	SUPPLY AIR MP GALV WELDED	EA GALV GREASE	EXHAUST GREASE GALV WELDED
SA SS WELD	SUPPLY AIR LP LP SS 304 2B	EA SS WELD	EXHAUST GREASE SS 304 WELDED
EA	EXHAUST AIR	MUA	MAKEUP AIR

PIPING SYMBOL LEGEND					
SYMBOL	FULL NAME	ABBR	SYMBOL	FULL NAME	ABBR
	VALVE TWO-WAY CONTROL	2WAY		METER BTU	BTU MTR
	VALVE THREE-WAY CONTROL	3WAY		SUB-METER WATER FLOW	MTR
	VALVE AUTOMATIC FLOW CONTROL	AF		PRESSURE / TEMPERATURE PORT	P&T
	VALVE BALANCING	BALV		SENSOR PRESSURE DIFFERENTIAL	DP
	VALVE BALANCING AUTOMATIC	ABALV		STRAINER	STRN
	VALVE BALL - FULL PORTED	BV		SUCTION DIFFUSER	SUC DIFF
	VALVE BUTTERFLY	BFV		HOSE BIBB	HB
	VALVE BUTTERFLY - W/ MEMORY STOP	BFVM		PIPE BREAK - PIG TAIL	
	VALVE CHECK	CV		POINT OF CONNECTION	POC
	VALVE CIRCUIT SETTER	CS		CONCENTRIC REDUCER	CR
	VALVE GAS COCK	GC		ECCENTRIC REDUCER	ER
	VALVE GATE	GV		PIPE - EXISTING	
	VALVE GLOBE	GLV		PIPE - DEMO	
	VALVE PRESSURE REDUCING	PRV		PIPE - NEW	
	VALVE PRESSURE RELIEF	PRR		PIPE - FUTURE	
	VALVE SOLENOID	SV		PIPE - SIZE & ABBREVIATION	
	AUTOMATIC AIR VENT	AV		PIPE - SIZE & ABBREVIATION WITH INSULATION	
	MANUAL AIR VENT	MAV		THERMAL EXPANSION DEVICE	EXP
	WATER HAMMER ARRESTOR	WHA		FLEXIBLE CONNECTION	
	DOUBLE CHECK BACKFLOW PREVENTER	DCBP		FLEXIBLE PIPE	
	REDUCED PRESS. BACKFLOW PREVENTER	RPBP		PIPE - HEAT TRACE	
	BULB WELL	BW		PUMP	
	FLOW DIRECTION ARROW			AIR SEPARATOR	AIR SEP
	PRESSURE INDICATOR	PRESS		CHEMICAL POT FEEDER	CPOT
	SENSOR	SNRS		HEAT EXCHANGER	HTX
	TEMPERATURE INDICATOR	THERM		EXPANSION TANK	ET

HVAC SYMBOL LEGEND			
SYMBOL	DESCRIPTION	SYMBOL	DESCRIPTION
	BARE RECTANGULAR SHEETMETAL		RECTANGULAR SIDE-WALL GRILLE WITH / WITHOUT OBD
	SOUNDLINE SHEETMETAL (GENERAL NOTES)		SUPPLY DUCT UP/DOWN
	SHEETMETAL W/ INSULATION (GENERAL NOTES)		EXHAUST DUCT UP/DOWN
	BARE ROUND SHEETMETAL		RETURN DUCT UP/DOWN
	ROUND SHEETMETAL W/ INSULATION (GENERAL NOTES)		SUPPLY AIR TERMINAL RECTANGULAR AND SQUARE
	OVAL SHEETMETAL W/ INSULATION (GENERAL NOTES)		RETURN AIR TERMINAL RECTANGULAR AND SQUARE
	EXAMPLE OF EXISTING		EXHAUST AIR TERMINAL RECTANGULAR AND SQUARE
	EXAMPLE OF EXISTING		SUPPLY AIR SLOT DIFFUSER
	EXAMPLE OF DEMO		RETURN AIR SLOT DIFFUSER
	EXAMPLE OF NEW		EXHAUST AIR SLOT DIFFUSER
	EXAMPLE OF FUTURE (NIC)		POINT OF CONNECTION
	EXPOSED QUALITY SHEETMETAL		CENTER LINE
	CLEANROOM QUALITY DUCTWORK		THERMOSTAT
	DUCTBOARD (1" FIBERGLASS)		CARBON MONOXIDE SENSOR
	CONTINUATION OF ROUND DUCT		NITROGEN DIOXIDE SENSOR
	CONTINUATION OF RECTANGULAR DUCT		HUMIDITY SENSOR
	AIR FLOW IN SYMBOL		OTHER SENSOR
	AIR FLOW OUT SYMBOL		SMOKE DETECTOR
	MECHANICAL EQUIPMENT TAG		ELECTRICAL SWITCH
	KEYED NOTE		MITERED ELBOW WITH TURNING VANES
	ACCESS DOORS		DOUBLE NEGATIVE PRESSURE
	RATED ENCLOSURE		DOUBLE POSITIVE PRESSURE
	FLEX DUCT		NEUTRAL PRESSURE
	EQUIPMENT FLEX ROUND CONNECTOR		SINGLE NEGATIVE PRESSURE
	EQUIPMENT FLEX RECTANGULAR CONNECTOR		SINGLE POSITIVE PRESSURE
	VOLUME DAMPER / REMOTE DAMPER		DIFFERENTIAL PRESSURE MONITOR
	RADIAL AIR TERMINAL		DPM SENSOR SYMBOL
	T-BAR LAY-IN METAL EGGCRATE (RETURN/EXH)		ROOM AIRFLOW ARROW

HVAC GENERAL NOTES - 2021 WSEC	
1.	THESE PLANS ARE SCHEMATIC AND DO NOT SHOW EXACT ROUTING OR EVERY OFFSET WHICH MAY BE REQUIRED. THE HVAC CONTRACTOR IS TO COORDINATE WITH ALL OTHER TRADES AND IS TO VERIFY ALL CLEARANCES BEFORE COMMENCING WORK.
2.	MATERIALS, METHODS, AND INSTALLATION SHALL COMPLY WITH THE PROVISIONS OF THE 2021 EDITIONS OF THE INTERNATIONAL MECHANICAL CODE, INTERNATIONAL BUILDING CODE, INTERNATIONAL FIRE CODE 2021 WSEC, AND LOCAL CODES AND ORDINANCES.
3.	ALL DUCT SIZE ANNOTATIONS REPRESENT ACTUAL OUTSIDE DIMENSIONS OF THE SHEET METAL (UNO). IF APPLICABLE, INTERIOR INSULATION WILL NEED TO BE ACCOUNTED FOR WHEN DETERMINING ACTUAL DUCT FREE AREA. SEE DUCTWORK INSULATION SCHEDULE FOR ADDITIONAL SPACE REQUIRED FOR EXTERIOR (WRAP) INSULATION.
4.	DUCT CONSTRUCTION AND HANGING SHALL COMPLY WITH CHAPTER 6 OF THE 2021 IMC AND WITH CURRENT SMACNA STANDARDS. EARTHQUAKE BRACE ALL DUCTS 28\"/>
5.	JOINTS OF MEDIUM AND HIGH VELOCITY DUCT SYSTEMS SHALL BE SEALED WITH GASKETS OR LISTED MASTIC TYPE DUCT SEALANT.
6.	DUCTS SHALL BE INSULATED AS INDICATED ON PLANS, PER 2021 WASHINGTON STATE ENERGY CODE, COMMERCIAL PROVISIONS. SEE DUCTWORK INSULATION SCHEDULE.
7.	- ACOUSTICAL SOUND LINING, WHERE INDICATED, SHALL BE 1\"/>
8.	PROVIDE EARTHQUAKE RESTRAINT FOR HVAC EQUIPMENT IN ACCORDANCE WITH SECTION 1613 OF THE 2021 IBC.
9.	PROVIDE FIRE DAMPERS, SMOKE DAMPERS AND FIRESMOKE DAMPERS WHERE INDICATED ON PLANS AND AS REQUIRED BY SECTION 717.5 OF THE 2021 IBC AND SECTION 607.5 OF THE 2021 IMC. PROVIDE CEILING FIRE DAMPERS WHERE INDICATED ON PLANS AND AS REQUIRED BY SECTION 717.6 OF THE 2021 IBC AND SECTION 607.6 OF THE 2021 IMC. INSTALL FIRE DAMPERS SMOKE DAMPERS AND FIRESMOKE DAMPERS IN ACCORDANCE WITH THE MANUFACTURERS INSTRUCTIONS, THE TERMS OF THEIR LISTING, AND THE REQUIREMENTS OF THE CODE.
10.	PIPING PENETRATIONS OF FIRE RATED WALLS OR FLOORS SHALL BE SLEEVED AND FIRE STOPPED WITH LISTED MATERIALS SO AS TO MAINTAIN THE INTEGRITY AND RATING OF THE FLOOR OR WALL.
11.	PROVIDE RETURN DUCT SMOKE DETECTOR AUTOMATIC SHUT DOWN OF ALL NEW HEATING, COOLING, OR VENTILATION EQUIPMENT MOVING IN EXCESS OF 2000 CFM IN ACCORDANCE WITH SECTION 606 OF THE 2021 IMC. POWER AND INTERLOCK WIRING WITH THE BUILDING FIRE ALARM SYSTEM IS BY THE ELECTRICAL CONTRACTOR. BAS TO MONITOR FIRE ALARM CONTROL PANEL AND SHUT DOWN ALL FAN TERMINAL UNITS DURING ANY BUILDING FIRE ALARM EVENT, IN ACCORDANCE WITH 2021 IMC 606.2.2.
12.	HVAC EQUIPMENT, VALVES AND DAMPERS SHALL BE LOCATED IN EASILY ACCESSIBLE LOCATIONS. UNLESS SHOWN ON ARCHITECTURAL DRAWINGS, REQUIRED ACCESS PANELS SHALL BE PROVIDED AND INSTALLED BY THE GENERAL CONTRACTOR. MINIMUM ACCESS DOOR SIZE FOR VALVES AND DAMPERS TO BE 18\"/>
13.	MOTORS STARTERS NOT LISTED AS BEING PROVIDED IN THE HVAC EQUIPMENT SCHEDULES ARE TO BE PROVIDED AND INSTALLED BY ELECTRICAL CONTRACTOR.
14.	WITHIN 90 DAYS AFTER THE DATE OF SYSTEM ACCEPTANCE, RECORD DRAWINGS OF THE ACTUAL INSTALLATION TO BE PROVIDED TO THE BUILDING OWNER. RECORD DRAWINGS SHALL INCLUDE AS A MINIMUM THE LOCATION AND PERFORMANCE DATA ON EACH PIECE OF EQUIPMENT, GENERAL CONFIGURATION OF DUCT AND PIPE DISTRIBUTION SYSTEM, INCLUDING SIZES, AND THE TERMINAL AIR AND WATER DESIGN FLOW RATES.
15.	OPERATING AND MAINTENANCE MANUALS TO BE PROVIDED TO THE BUILDING OWNER THAT INCLUDE: SUBMITTAL DATA, NAMES AND ADDRESSES OF AT LEAST ONE SERVICE AGENCY, HVAC CONTROLS SYSTEM MAINTENANCE AND CALIBRATION INFORMATION AND A COMPLETE OPERATIONAL NARRATIVE FOR EACH SYSTEM.
16.	COMMISSIONING IS REQUIRED ON THIS PROJECT IN ACCORD WITH 2021 WASHINGTON STATE ENERGY CODE (WSEC), COMMERCIAL PROVISIONS AND SECTION C408. SEE SCHEDULED COMMISSIONING AND SCHEDULING SCHEDULE FOR FURTHER DETAIL.
17.	A COMPLETE REPORT OF TEST PROCEDURES AND RESULTS SHALL BE PREPARED AND FILED WITH THE OWNER.
18.	DAMPERS USED FOR OUTDOOR AIR INTAKE, EXHAUST, OR RELIEF SHALL HAVE THE FOLLOWING MAXIMUM LEAKAGE RATES AT 1\"/>
19.	OUTSIDE AIR INTAKE, EXHAUST, AND RELIEF DAMPERS SERVING CONDITIONED SPACES MUST BE MOTORIZED (FAL, CLOSED) PER 2021 WSEC SECTION C403.7.8, EXCEPT AS ALLOWED BY WSEC.
20.	MATERIALS WITHIN PLENUMS SHALL BE NONCOMBUSTIBLE OR SHALL BE LISTED AND LABELED AS HAVING A FLAME SPREAD INDEX OF NOT MORE THAN 25 AND A SMOKE-DEVELOPED INDEX OF NOT MORE THAN 50 WHEN TESTED IN ACCORDANCE WITH ASTM E 84 OR UL 723, EXCEPT AS NOTED IN SECTION 602.2.1 OF THE 2021 IMC.
21.	ALL MECHANICAL WORK SHOWN ON DRAWINGS INTENDED TO BE INSTALLED SOLELY BY MACDONALD-MILLER FACILITY SOLUTIONS. MACDONALD-MILLER FACILITY SOLUTIONS SHALL NOT BE HELD ACCOUNTABLE FOR ANY DESIGN OR CONSTRUCTION DEFICIENCIES IF WORK IS PERFORMED BY AN OUTSIDE PARTY.

LEGAL DESCRIPTION	
PARCEL NUMBER: 9810000015	
LEGAL DESCRIPTION:	
Section 34 Township 20 Range 04 Quarter 23 WOODS 1ST CANNOT BE SOLD OR SUBD WITHOUT 001-4 & 001-6 LOT 1 OF BLA 2010-06-15-5001 DESC AS BEG AT A PT 30 FT E & 151.05 FT N OF INTER OF 15TH AV SE & 3RD ST SE TH N 322.08 FT TH N 305.27 FT TH E 692.45 FT TH S 78 DEG 58 MIN 52 SEC E 0.44 FT TH S 49.97 FT TH E 40.98 FT TH S 43.29 FT TH N 41.04 FT TH S 181.78 FT TH W 30 FT TH S 196.6 FT TH TO BEG CURVE CONCAVE TO NW HAVING A RAD OF 19.5 FT & C/A OF 59 DEG 50 MIN 20 SEC & BEING SUBTENDED BY A CHORD WHICH BEARS S 65 DEG 03 MIN 56 SEC W 19.45 FT TH SWLY & WLY AL CD SURVEY 20.31 FT TH PT OF REVERSE CURVE TH WLY & SWLY & SLY 90.9 FT CONCAVE TO SE HAVING A RAD OF 60.5 FT & C/A OF 86 DEG 05 MIN 15 SEC TH S 3.26 FT TH SLY, SWLY & WLY 14.92 FT ALG CURVE CONCAVE TO NW HAVING A RAD OF 95 FT & C/A OF 89 DEG 58 MIN 59 SEC TH W 107.24 FT TO BEG OF CURVE CONCAVE TO NW HAVING A RAD OF 58.98 FT & C/A OF 81 DEG 57 MIN 04 SEC & BEING SUBTENDED BY CHORD WHICH BEARS S 49 DEG 34 MIN 17 SEC W 73.42 FT TH SLY, SWLY & WLY ALG CD SURVEY 60.07 FT TH W 6.43 FT TH S 131.81 FT TH SLY & SLY 14.27 FT ALG CD SURVEY CONCAVE TO E HAVING A RAD OF 25 FT & C/A OF 32 DEG 42 MIN 11 SEC TH N 88 DEG 06 MIN 01 SEC W 77.46 FT TO BEG OF CURVE CONCAVE TO N HAVING A RAD OF 40 FT & C/A OF 43 DEG 06 MIN 01 SEC & BEING SUBTENDED BY CHORD WHICH BEARS S 72 DEG 08 MIN 03 SEC W 29.66 FT TH SWLY & WLY ALG CD SURVEY 30.31 FT TH S 60 DEG 01 MIN 01 SEC W 238.87 FT TO BEG OF A CURVE CONCAVE TO SE HAVING A RAD OF 65.83 FT & C/A OF 65 DEG 47 MIN 29 SEC & 40 FT & BEING SUBTENDED BY CHORD WHICH BEARS N 45 DEG 04 MIN 10 SEC W 84.83 FT TH WLY, NWLY & NWLY ALG CD SURVEY 72.34 FT TH N 12 DEG 28 MIN 32 SEC W 81.31 FT TO P.O.B. OF DEPTER TAXATION. TH N 12 DEG 28 MIN 32 SEC W 81.31 FT TO DEPTER EXERCISE OF EASES EASE OF RECORD OUT 04-20-34-2 P-019 981000001-1, 0555-06-05-000, 060-0, 061-0, 062-0 SEC 2011-0091 BL 10/11/10 BL DC00354155 5/20/2014	

6/28/2025 2:59:12 PM Autodesk Docs\\MultiCare - Good Samaritan Hospital Kitchen Expansion\\MECH\\MultiCare Kitchen-PE1.dwg



MacDonald-Miller
FACILITY SOLUTIONS
17930 Intl. Blvd, Suite, 120 SeaTac, WA 98188
Phone: 206-763-9400 www.macmiller.com

MultiCare
Good Samaritan
Hospital Kitchen
401 15th Ave SE,
Puyallup,
WA 98372

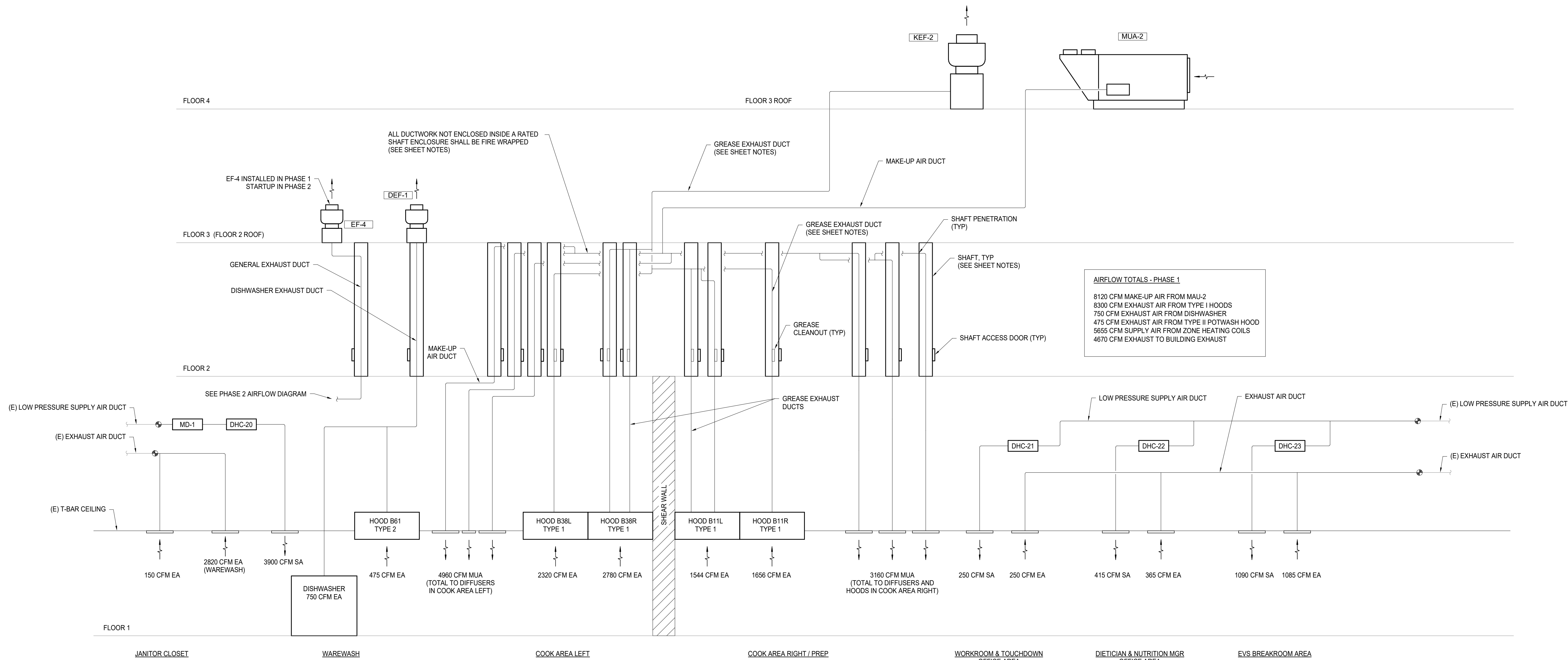
MultiCare
Good Samaritan Hospital
MULTICARE

1	Revision #1	2025-x
WORK	ISSUE	DATE
Job Number	7725-4055	TITLE

AIRFLOW DIAGRAMS -
PHASE 1 - MECHANICAL

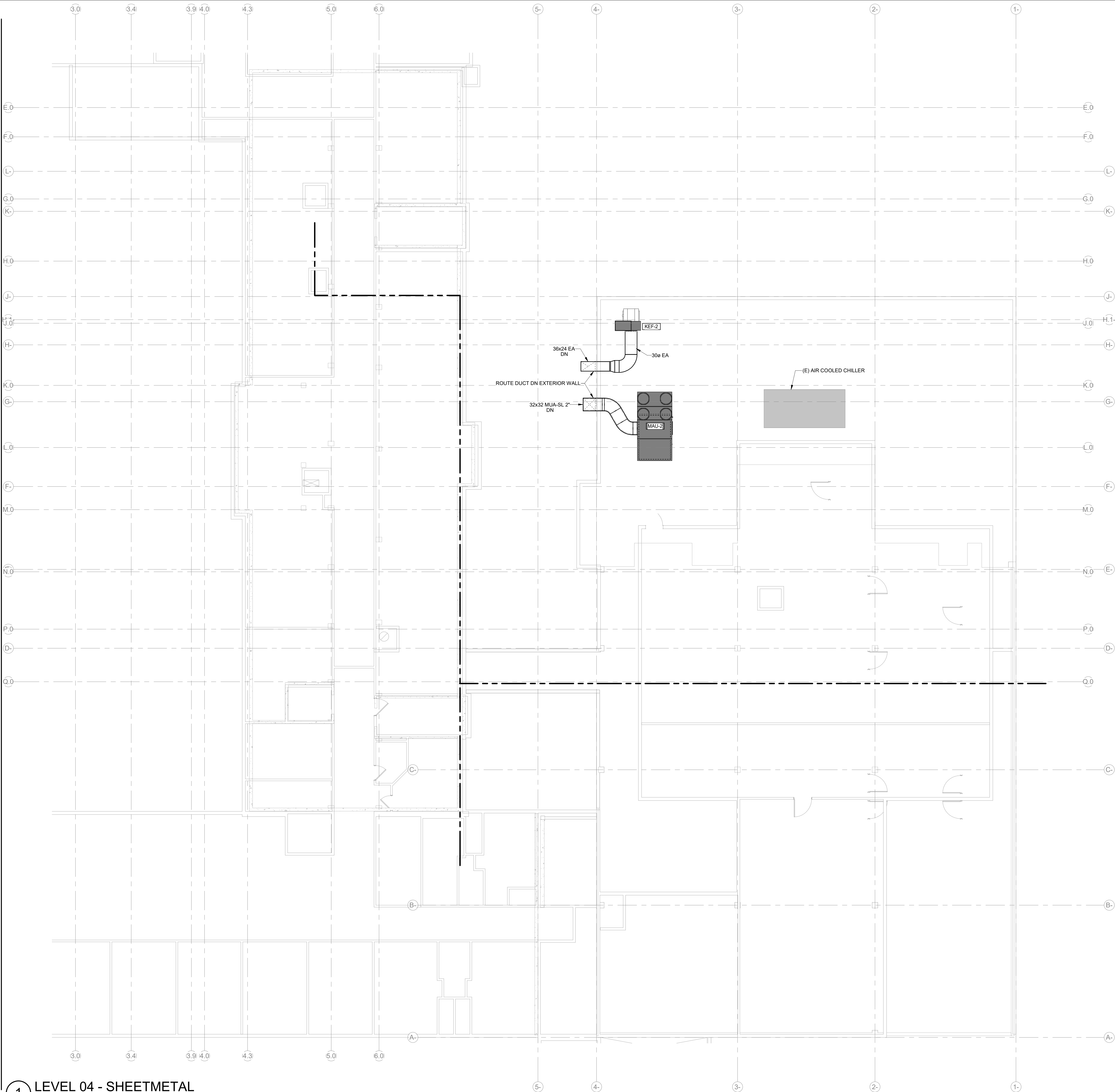
SHEET NOTES

- ALL DUCTWORK ON LEVEL 2 SHALL BE PROTECTED BY EITHER A RATED SHAFT ENCLOSURE OR FIRE WRAP PER 2021 WASHINGTON STATE BUILDING CODE REQUIREMENTS. THE FIRE RATING FOR EACH DUCT SYSTEM SHALL BE MAINTAINED FROM THE LEVEL 2 FLOOR PENETRATION UP THROUGH THE LEVEL 3 ROOF. SEE SHEET [TM4.02](#) FOR INDIVIDUAL SHAFT LOCATIONS AND SIZES. EXHAUST DUCT SERVING TYPE I HOODS SHALL BE ENCLOSED IN ITS OWN SHAFT THAT DOES NOT CONTAIN OTHER DUCTS, PIPING, OR WIRING SYSTEMS PER 2021 WASHINGTON STATE MECHANICAL CODE SECTION 506.3.11.
- GREASE EXHAUST DUCT ACCESS PANELS SHALL BE PROVIDED IN ACCORDANCE WITH SECTION 506.3.8 AND 506.3.9 OF THE 2021 WASHINGTON STATE MECHANICAL CODE. ACCESS PANELS SHALL BE:
 - LOCATED NOT MORE THAN 10 FEET FROM CHANGES IN DIRECTION GREATER THAN 45 DEGREES.
 - LOCATED ON THE SIDE OR TOP OF THE DUCT, NOT ON THE BOTTOM.
 - HAVE DIMENSIONS OF AT LEAST 12 INCHES BY 12 INCHES.
- RATED ACCESS PANELS FOR SHAFT ENCLOSURE PROVIDED BY G.C. ACCESS PANELS ON GREASE DUCT BY M.C. ACCESS PANELS ON SHAFT ENCLOSURE SHALL BE LOCATED AS TO PROVIDE CLEAR ACCESS TO GREASE EXHAUST CLEANOUTS.



PHASE 1 - KITCHEN AIRFLOW DIAGRAM

6/28/2025 2:55:54 PM Autodesk Docs\\MultiCare - Good Samaritan Hospital Kitchen Expansion\\MECH\\MultiCare Kitchen P25.rvt



SHEET NOTES

- GC SHALL PROVIDE PERSONNEL FALL PROTECTION FOR SERVICING MECHANICAL EQUIPMENT LOCATED WITHIN 10 FT FROM THE EDGE OF THE ROOF.
- EQUIPMENT SHALL BE MOUNTED TO THE ROOF IN ACCORDANCE WITH THE STRUCTURAL DRAWINGS.
- ROOF MODIFICATIONS INCLUDING ROOFING, PATCHING, INSULATION, AND WATERPROOFING SHALL BE BY THE GC.
- ELECTRICAL CONTRACTOR SHALL PROVIDE A 120V GFCI OUTLET WITHIN 25 FEET OF ROOF MOUNTED MECHANICAL EQUIPMENT.

Perkins&Will

1301 5th Ave
#2300, Seattle
WA 98101
T+2063816000
www.perkinswill.com

CONSULTANTS

FOOD SERVICE

INMAN FOOD SERVICES
3807 Charlotte Avenue,
Nashville, Tennessee 37209
CIVIL

AHBL
1200 6th Ave #1620,
Seattle, WA 98101
STRUCTURAL

PCS
1011 Western Avenue, Suite 810
Seattle WA 98104
CONTRACTOR

ABBOTT CONSTRUCTION
3408 1st Ave S,
Seattle, WA 98134
PLUMBING

MACDONALD MILLER
17930 International Blvd,
Suite 120, SeaTac, WA 98188
MECHANICAL

MACDONALD MILLER
17930 International Blvd,
Suite 120, SeaTac, WA 98188
ELECTRICAL

EBD SERVICES
14900 Interurban Ave S #143
Seattle, WA 98168
PROJECT MANAGER

TURNER & TOWNSEND
920 Fifth Avenue,
Seattle, WA, 98104

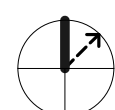
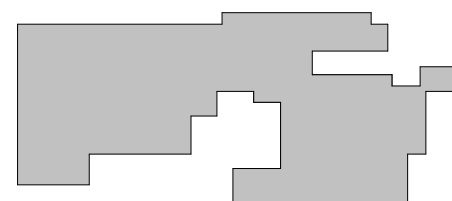


MacDonald-Miller
FACILITY SOLUTIONS
17930 Intl. Blvd, Suite, 120 SeaTac, WA 98188
Phone: 206-763-9400 www.macmiller.com

MultiCare
Good Samaritan
Hospital Kitchen
401 15th Ave SE,
Puyallup,
WA 98372

MultiCare
Good Samaritan Hospital
MULTICARE

KEY PLAN



ISSUE CHART

1	Revision #1	2025-x
ISSUE	DATE	
Job Number	7725-4055	TITLE

LEVEL 04 FLOOR PLAN -
PHASE 1 - MECHANICAL

SHEET NUMBER

TM2.04

6/28/2025 2:58:49 PM Autodesk Docs\\MultiCare - Good Samaritan Hospital Expansion\\MECH\\MultiCare Kitchen\\R25.rvt



- KEY NOTES
- ① EXISTING DISHWASHER EXHAUST FAN TO BE DEMOLISHED AFTER THE COMPLETION OF PHASE 1

Perkins&Will

1301 5th Ave
#2300, Seattle,
WA 98101
L+12063816000
www.perkinswill.com

CONSULTANTS

FOOD SERVICE
INMAN FOOD SERVICES
3807 Charlotte Avenue,
Nashville, Tennessee 37209
CIVIL

AHBL
1200 6th Ave #1620,
Seattle, WA 98101
STRUCTURAL

PCS
1011 Western Avenue, Suite 810
Seattle WA 98104
CONTRACTOR

ABBOTT CONSTRUCTION
3408 1st Ave S,
Seattle, WA 98134
PLUMBING

MACDONALD MILLER
17930 International Blvd,
Suite 120, SeaTac, WA 98188
MECHANICAL

MACDONALD MILLER
17930 International Blvd,
Suite 120, SeaTac, WA 98188
ELECTRICAL

EBD SERVICES
14900 Interurban Ave S #143
Seattle, WA 98168
PROJECT MANAGER

TURNER & TOWNSEND
920 Fifth Avenue,
Seattle, WA, 98104

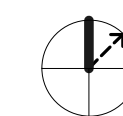
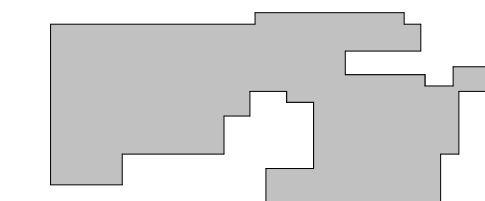


MacDonald-Miller
FACILITY SOLUTIONS
17930 Intl. Blvd. Suite. 120 SeaTac, WA 98188
Phone: 206-763-9400 www.macmiller.com

MultiCare
Good Samaritan
Hospital Kitchen
401 15th Ave SE,
Puyallup,
WA 98372

MultiCare
Good Samaritan Hospital
MULTICARE

KEY PLAN



ISSUE CHART

1	Revision #1	2025-x-xx
ISSUE	DATE	
Job Number	7725-4055	TITLE

LEVEL 03 FLOOR PLAN -
PHASE 1 - MECHANICAL

SHEET NUMBER

TM2.03

1 LEVEL 03 - SHEETMETAL
SCALE: 1/8" = 1'-0"

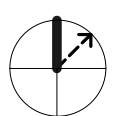
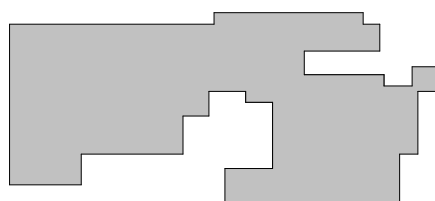
100% CD SET 06/30/2025



MacDonald-Miller
FACILITY SOLUTIONS
17930 Intl. Blvd, Suite 120 SeaTac, WA 98198
Phone: 206-763-9400 www.macmiller.com

MultiCare
Good Samaritan
Hospital Kitchen
401 15th Ave SE,
Puyallup,
WA 98372

MultiCare
Good Samaritan Hospital
MULTICARE



1	Revision #1	2025-x x-xx
WWS	ISSUE	DATE
Job Number	7725-4055	TITLE

LEVEL 01 FLOOR PLAN -
PHASE 1 AREA A -
MECHANICAL

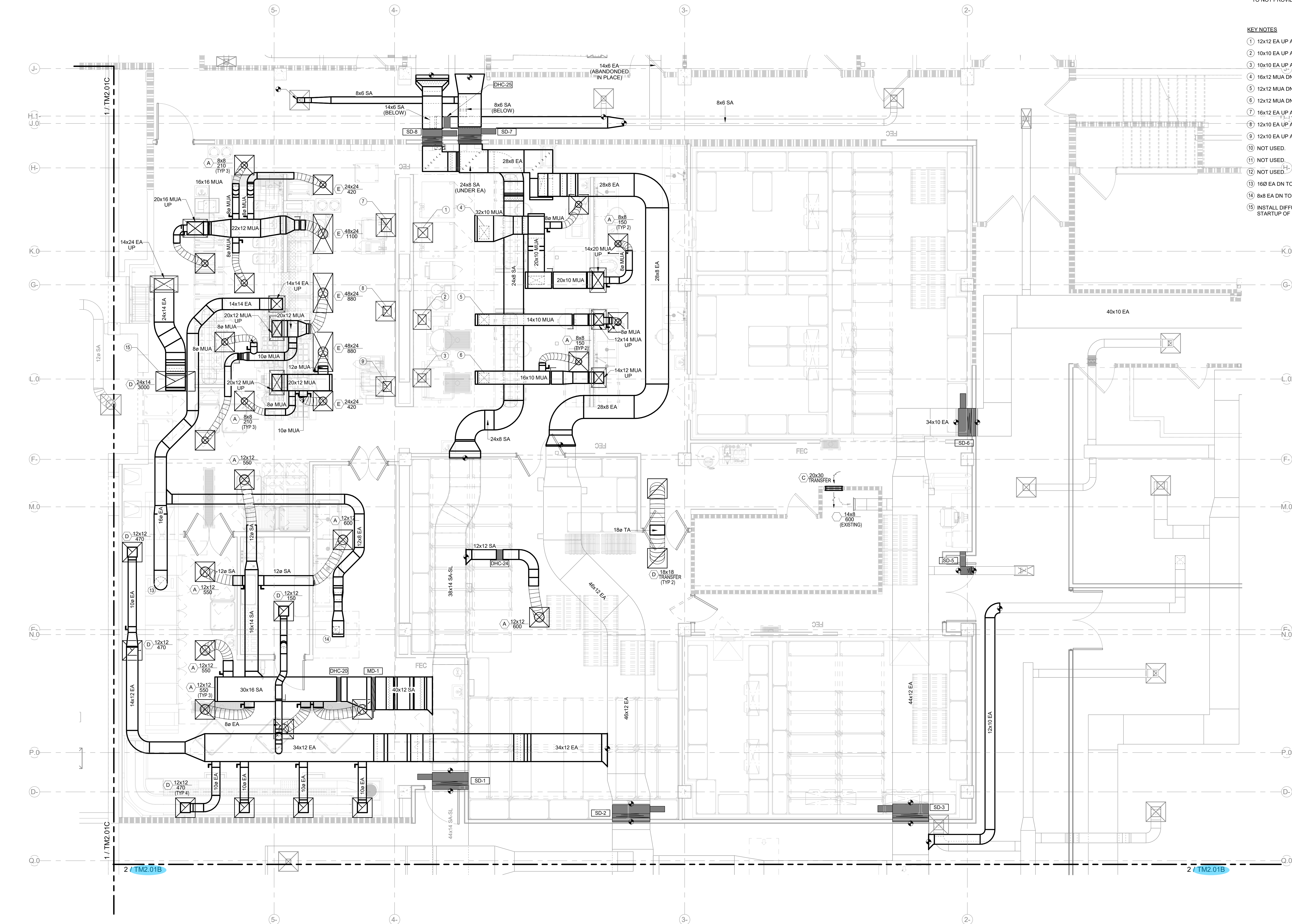
TM2.01A

SHEET NOTES

- SEE HOOD SCHEDULE ON TM2.02 FOR CONNECTION SIZES AND CFM VALUES.
- MODULAR CORE DIFFUSERS SHALL BE ADJUSTED SO AS TO NOT PROVIDE AIR DIRECTED AT EXHAUST HOODS.

KEY NOTES

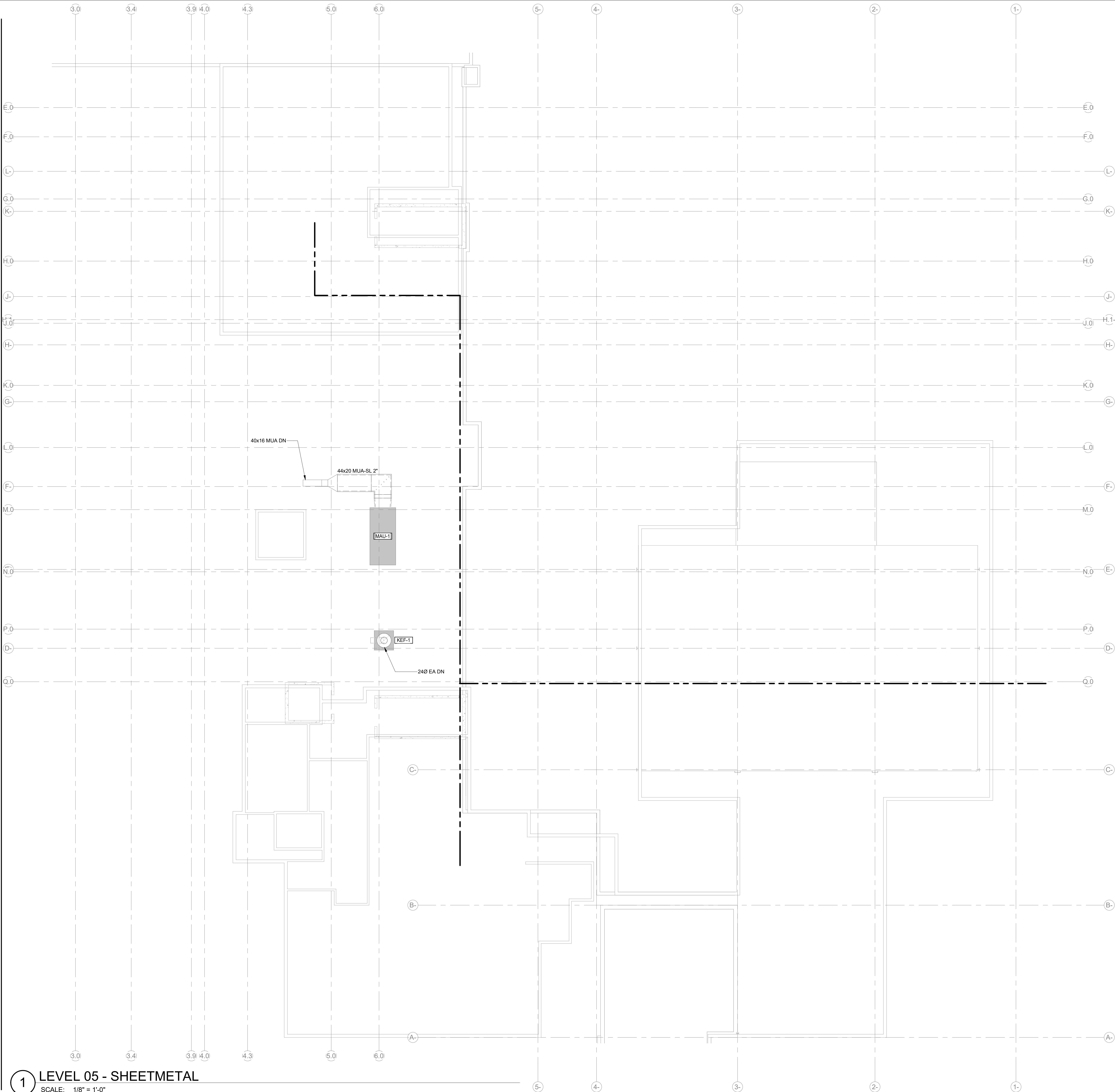
- 12x12 EA UP AND DN TO HOOD. BALANCE TO 1656 CFM.
- 10x10 EA UP AND DN TO HOOD. BALANCE TO 772 CFM.
- 10x10 EA UP AND DN TO HOOD. BALANCE TO 772 CFM.
- 16x12 MUA DN TO HOOD. BALANCE TO 1325 CFM.
- 12x12 MUA DN TO HOOD. BALANCE TO 615 CFM.
- 12x12 MUA DN TO HOOD. BALANCE TO 620 CFM.
- 16x12 EA UP AND DN TO HOOD. BALANCE TO 2320 CFM.
- 12x10 EA UP AND DN TO HOOD. BALANCE TO 1390 CFM.
- 12x10 EA UP AND DN TO HOOD. BALANCE TO 1390 CFM.
- NOT USED.
- NOT USED.
- NOT USED.
- 160 EA DN TO DISHWASHER CONNECTION.
- 8x8 EA DN TO HOOD. BALANCE TO 475 CFM.
- INSTALL DIFFUSER AND DUCTWORK IN PHASE 1. STARTUP OF EF-4 SYSTEM DURING PHASE 2.



1 LEVEL 01 - SHEETMETAL - AREA A
SCALE: 1/4" = 1'-0"

**TM2.01C**

6/28/2025 2:59:59 PM Autodesk Docs\\MultiCare - Good Samaritan Hospital Kitchen Expansion\\MECH\\MultiCare Kitchen\\R2E.rvt



1 LEVEL 05 - SHEETMETAL

SCALE: 1/8" = 1'-0"

Perkins&Will

1301 5th Ave
#2300, Seattle,
WA 98101
T+12063816000
www.perkinswill.com

CONSULTANTS

FOOD SERVICE
INMAN FOOD SERVICES
3807 Charlotte Avenue,
Nashville, Tennessee 37209
CIVIL

AHBL
1200 6th Ave #1620,
Seattle, WA 98101
STRUCTURAL

PCS
1011 Western Avenue, Suite 810
Seattle WA 98104
CONTRACTOR

ABBOTT CONSTRUCTION
3408 1st Ave S,
Seattle, WA 98134
PLUMBING

MACDONALD MILLER
17930 International Blvd,
Suite 120, SeaTac, WA 98188

MECHANICAL
MACDONALD MILLER
17930 International Blvd,
Suite 120, SeaTac, WA 98188

ELECTRICAL
EBD SERVICES
14900 Interurban Ave S #143
Seattle, WA 98168

PROJECT MANAGER
TURNER & TOWNSEND
920 Fifth Avenue,
Seattle, WA, 98104

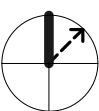
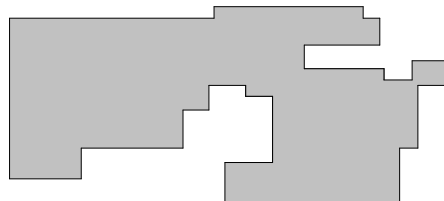


MacDonald-Miller
FACILITY SOLUTIONS
17930 Intl. Blvd. Suite. 120 SeaTac, WA 98188
Phone: 206-763-9400 www.macmiller.com

MultiCare
Good Samaritan
Hospital Kitchen
401 15th Ave SE,
Puyallup,
WA 98372

MultiCare
Good Samaritan Hospital
MULTICARE

KEY PLAN



ISSUE CHART

1	Revision #1	2025-x x-xx
MARK	ISSUE	DATE
Job Number		7725-4055
TITLE		

LEVEL 05 FLOOR PLAN -
PHASE 2 - MECHANICAL

SHEET NUMBER

TM2.05

PROJECT RESPONSIBILITY MATRIX																	
UNIT NO.	DESCRIPTION	BMS		NON BMS					PROVIDED BY	INSTALLED BY	POWER WIRING BY	CONTROLS WIRING BY	FIRE ALARM WIRING BY	TEST AND BALANCE BY		NOTES	
		S/S	TC	T'STAT	INTERLOCK	24 HOUR	FIRE/LIFE SAFETY	OTHER									
PART A: NEW MECHANICAL EQUIPMENT																	
A1	MAKEUP AIR UNITS	X	-	X	X	X	-	13,16	MC	MC	EC	CC	-	MC		3,5,11,47,49	
A2	TYPE I GREASE EXHAUST FANS	X	-	-	X	X	-	-	MC	MC	EC	CC	-	MC		3,5,47,49	
A3	TYPE II DISHWASHER EXHAUST FANS	-	-	-	X	X	-	16	MC	MC	EC	CC	-	MC		3,5,47,49	
A4	GENERAL EXHAUST FANS	X	-	-	-	X	-	16	MC	MC	EC	CC	-	MC		3,5,47,49	
A5	HYDRONIC HEATING COILS	-	-	X	-	X	-	-	MC	MC	-	CC	-	MC		11,47	
A6	FAN POWERED VAVS	X	-	X	-	X	-	-	MC	MC	EC	CC	-	MC		3,11,49	
A7	WALK-IN COOLER / FREEZER REFRIGERATION EQUIPMENT AND ASSOCIATED PIPING	-	-	X	-	X	-	2	KEC	KEC	EC	KEC	-	KEC		7,11,21,49	
A8	TYPE I GREASE EXHAUST HOODS	-	-	-	X	X	X	1	KEC	MC	EC	CC	FAC	MC		8	
A9	ANSUL FIRE PROTECTION SYSTEM FOR TYPE I HOODS	-	-	-	X	X	X	6	KEC	KEC	EC	EC	FAC	KEC		-	
A10	TYPE II POTWASH HOODS	-	-	-	X	X	-	-	KEC	MC	EC	CC	-	MC		-	
PART B: MECHANICAL EQUIPMENT ANCILLARIES																	
B1	HVAC EQUIPMENT MOTORS	-	-	-	-	-	-	-	MC	MC	EC	CC	-	MC		-	
B2	MAGNETIC MOTOR STARTERS; AUTOMATICALLY CONTROLLED WITH OR WITHOUT HOA SWITCHES	-	-	-	-	-	-	-	EC	EC	EC	CC	-	-		47	
B3	MAGNETIC MOTOR STARTERS; MANUALLY CONTROLLED	-	-	-	-	-	-	-	EC	EC	EC	EC	-	MC		-	
B4	MAGNETIC MOTOR STARTERS (FURNISHED W/ MECH. EQUIPMENT)	-	-	-	-	-	-	-	MC	MC	EC	CC	-	MC		-	
B5	AIRFLOW PROVING SWITCH AS NEEDED BY EQUIPMENT	-	-	-	-	-	-	-	MC	MC	MC	CC	-	MC		48	
B6	DISCONNECT SWITCHES, 120V RECEPTACLES	-	-	-	-	-	-	-	EC	EC	EC	CC	-	-		-	
B7	HYDRONIC VALVES AND DAMPER MOTORS	-	-	-	-	-	-	-	CC	CC	EC	CC	-	MC		16,45	
B8	DDC CONTROL SYSTEM (LOW VOLTAGE)	-	-	-	-	-	-	-	CC	CC	EC	CC	-	CC		45	
B9	DDC CONTROL PANEL(S)	-	-	-	-	-	-	-	CC	CC	EC	CC	-	CC		45	
B10	ROOF CUTTING, PATCHING AND WATERPROOFING	-	-	-	-	-	-	-	GC	GC	-	-	-	-		-	
B11	MOTOR SPEED CONTROLLERS, 120V	-	-	-	-	-	-	-	MC	EC	EC	EC	-	MC		-	
B12	DUCT SMOKE DETECTORS (ACTIVATION OF LOCAL SMOKE DAMPERS)	-	-	-	-	-	-	-	EC	MC	EC	FAC	-	FAC		50	
B13	AREA SMOKE DETECTORS	-	-	-	-	-	-	-	EC	EC	EC	EC	-	EC		-	
B14	FIRE DAMPERS	-	-	-	-	-	-	-	CC	CC	EC	-	MC	MC		17	
B15	DUCT SMOKE DETECTORS (SHUTDOWN OF MECHANICAL EQUIPMENT OVER 2000 CFM)	-	-	-	-	-	X	-	EC	MC	EC	FAC	-	FAC		17	
B16	COMBINATION FIRE/SMOKE DAMPERS AND SMOKE DAMPERS	-	-	-	-	-	X	-	MC	MC	EC	FAC	-	FAC		17	
B17	EQUIPMENT CRANE PICKS	-	-	-	-	-	-	-	GC	-	-	-	-	-		23	
B18	SLEEPERS FOR MECHANICAL EQUIPMENT	-	-	-	-	-	-	-	GC	GC / MC	-	-	-	-		-	
B19	SHEETMETAL ACCESS DOORS IN MECHANICAL EQUIPMENT AND DUCTS	-	-	-	-	-	-	-	MC	MC	-	-	-	-		-	
B20	ARCHITECTURAL ACCESS DOORS/PANELS FOR MECHANICAL EQUIPMENT ACCESS	-	-	-	-	-	-	-	GC	GC	-	-	-	-		17	
B21	SHEETMETAL FLASHINGS OVER CURBS AND SLEEPERS	-	-	-	-	-	-	-	GC	GC	-	-	-	-		24	
B22	FLASHING AND COUNTERFLASHING AROUND MECHANICAL UNITS	-	-	-	-	-	-	-	GC	GC	-	-	-	-		24	
B23	CONCEALING ENCLOSURES AROUND MECH. EQUIPMENT	-	-	-	-	-	-	-	GC	GC	-	-	-	-		17,5,38	
B24	BOLLARDS FOR PROTECTION OF MECHANICAL EQUIPMENT	-	-	-	-	-	-	-	GC	GC	-	-	-	-		25	
B25	PIPE SLEEVES	-	-	-	-	-	-	-	MC	MC	-	-	-	-		26,27	
B26	FIRE SAFING AROUND MECHANICAL EQUIPMENT: PIPING, DUCTWORK, ETC.	-	-	-	-	-	-	-	MC	MC	-	-	-	-		-	
B27	CAULKING FOR WEATHER PROTECTION AROUND EXTERIOR MECHANICAL DEVICES (LOUVERS, PIPE AND DUCT PENETRATIONS, ETC.)	-	-	-	-	-	-	-	GC	GC	-	-	-	-		28,40	
B28	FLOOR DRAINS	-	-	-	-	-	-	-	MC	MC	-	-	-	MC		30,29	
B29	FIRE-RATED DUCT ENCLOSURES	-	-	-	-	-	-	-	GC	GC	-	-	-	-		17,38	
B30	WALL/CEILING SOUND MITIGATION	-	-	-	-	-	-	-	GC	GC	-	-	-	-		49	
B31	FALL PROTECTION	-	-	-	-	-	-	-	GC	GC	-	-	-	-		-	
Part D: DEMOLITION																	
D1	CUT CAP AND MAKE SAFE OF EXISTING MECHANICAL EQUIPMENT AND ASSOCIATED UTILITIES	-	-	-	-	-	-	-	MC	MC	EC	CC	FAC	-		-	
D2	CUT CAP AND MAKE SAFE OF EXISTING WALK-IN COOLER / FREEZER EQUIPMENT AND ASSOCIATED UTILITIES	-	-	-	-	-	-	-	KEC	KEC	EC	CC	FAC	-		-	
ABBREVIATIONS:																	
AFF	ABOVE FINISHED FLOOR	GC	GENERAL CONTRACTOR & OTHER TRADES														
CC	CONTROL CONTRACTOR	MC	MECHANICAL CONTRACTOR														
EC	ELECTRICAL CONTRACTOR	KEC	KITCHEN EQUIPMENT CONTRACTOR														
FAC	FIRE ALARM CONTRACTOR	S/S	START/STOP														
NOTES:																	
1.	HOODS ARE CONTROLLED BY HALTON DEMAND CONTROL KITCHEN VENTILATION (DCKV) SYSTEM. HARDWIRE INTERLOCK FROM DCKV CONTROLLER TO KITCHEN EXHAUST FAN VFD. DCKV CONTROLLER MONITORED BY BMS WHICH SENDS SIGNALS TO THE MAKEUP AIR UNIT.																
2.	UNITS CONTROLLED VIA LINE VOLTAGE THERMOSTAT LOCATED IN WALK-INS. SYSTEM REQUIRES MONITORING ONLY FROM BMS.																
3.	EC TO PROVIDE MAGENTIC MOTOR STARTERS FOR START/STOP OPERATION OF EQUIPMENT AND PROVIDE SERVICE DISCONNECT SWITCH WHEN REQUIRED. INTERLOCKING RELAYS PROVIDED BY CC.																
4.	EQUIPMENT SLEEPERS PROVIDED AND INSTALLED BY GC. SHEETMETAL SLEEPER CAPS PROVIDED AND INSTALLED BY MC.																
5.	GC TO ALTER CONSTRUCTION TO MEET CODE REQUIRED CLEARANCES AND DIRECT OTHER TRADES TO MEET INSTALLATION REQUIREMENTS.																
6.	LINE-VOLTAGE THERMOSTAT SET TO 80 F. INSTALL THERMOSTAT 48" AFF.																
7.	EC TO PROVIDE POWER AND SERVICE DISCONNECT SWITCH WHEN REQUIRED.																
8.	KEC TO PROVIDE DEMAND CONTROL KITCHEN VENTILATION SYSTEM FOR CONTROL OF HOODS, GREASE EXHAUST FANS, AND MAKEUP AIR UNITS.																
9.	PART OF THE SMOKE CONTROL SYSTEM. EMERGENCY POWER REQUIRED.																
10.	SMOKE DAMPER FOR FAN SYSTEM TO BE POWERED CLOSED, FAIL OPEN ON LOSS OF POWER. SEE SMOKE CONTROL FAN PRESSURE SWITCH.																
11.	THERMOSTAT. INSTALL 7-DAY PROGRAMMABLE THERMOSTAT 48" AFF.																
12.	PROVIDED WITH AN INTERNAL FACTORY INSTALLED THERMOSTAT.																
13.	THERMOSTAT SUPPLIED BY EQUIPMENT SUPPLIER. EC TO PROVIDE POWER CONNECTION TO UNIT WITH SERVICE DISCONNECT SWITCH. MC TO COORDINATE LOCATIONS AND POWER REQUIREMENTS TO EC.																
14.	SUPPLIER ASSEMBLED CONTROL PACKAGE. EC TO SET PANEL & FAN VFD, PROVIDE SERVICE DISCONNECT SWITCHES AND POWER WIRING AS REQUIRED. EC TO INTERLOCK VIBRATION SAFETY SWITCH TO SHUTDOWN VFD. EC TO POWER WIRE SUMP HEATER AND CONTACTOR. EC TO WIRE WATER LEVEL FLOAT SENSOR TO DRAIN SOLENOID AT WATER TREATMENT STATION.																
15.	EC TO FURNISH AND INSTALL BOILER POWER WIRING AND EMERGENCY SHUTDOWN SWITCHES. WIRING OF BOILER CONTROLS BY CC.																
16.	ALL EXHAUST AND INTAKE DAMPERED OPENINGS INTO THE BUILDING SHALL BE POWERED CLOSED DURING BUILDING UNOCCUPIED HOURS, UNLESS 24/7 OPERATION.																
17.	MC TO COORDINATE LOCATIONS OF ACCESS DOORS, GC TO FURNISH AND INSTALL ACCESS DEVICES.																
18.	SERVICE AND MAINTENANCE OUTLETS FOR POWER TOOLS.																
19.	MC TO PROVIDE THERMOSTAT, CONTACTOR AND/OR RELAY. EC TO PROVIDE POWER AND HEAT TRACE CABLE. MC TO COORDINATE LOCATIONS AND POWER REQUIREMENTS.																
20.	DAY TANK SUPPLIED BY EC.																
21.	REFRIGERANT PIPING PROVIDED AND INSTALLED BY KEC. MC TO PROVIDE AND INSTALL CONDENSATE PIPING FROM INDOOR EVAPORATOR COIL TO DRAIN.																
22.	MC TO COORDINATE LOCATION WITH GC. EC TO PROVIDE METHODS/MATERIALS SPECIFICATIONS.																
23.	GC TO PROVIDE STANDARD WORKING HOURS FOR CRANE PICKS. MC TO COORDINATE WEIGHTS OF MECHANICAL EQUIPMENT TO GC. GC TO PROVIDE SCHEDULE FOR PICKS, CHANGES MUST BE IN WRITING NO LESS THEN 24 HOURS PRIOR TO PICK.																
24.	ROOFING AND FLASHING BY GC.																
25.	POSITIONING SUGGESTED BY MC. FINAL INSTALLATION BY GC.																
26.	POSITIONING SUGGESTED BY MC, INSTALLATION IN SLABS BY MC. REVIEW BY GC TO CONFIRM LAYOUT WITH MC.																
27.	SLEEVES THROUGH STRUCTURAL BEAMS COORDINATED BY MC BUT FURNISHED BY GC.																
28.	SEE LOUVER INSTALLATIONS.																
29.	MC TO COORDINATE LOCATION, TOP OF DRAIN ELEVATION AND MEMBRANES IF REQUIRED WITH GC. SLOPE TO DRAIN BY GC.																
30.	MC TO COORDINATE LOCATION, ELEVATION AND OTHER FIXTURE REQUIREMENTS WITH GC.																
31.	MC TO PROVIDE AND INSTALL. STRUCTURAL DESIGN AND REVIEW BY GC AND GC'S STRUCTURAL ENGINEER AT NO COST TO MC.																
32.	PIPE TRENCHING AND IMPORT/EXPORT OF SOILS IS BY GC.																
33.	PIPE BEDDING MATERIAL AND PIPE BEDDING IS BY MC. CLOSURE OF TRENCH BY GC.																
34.	PIPE PENETRATION AND SEAL BY MC.																
35.	BOOT AND DRAIN SUPPLIED BY GC. MC CONNECTS TO BOOT AND ROUTES TO FOUNDATION DRAINS AS INDICATED ON THE CIVIL DRAWINGS. FOUNDATION DRAINS BY GC.																
36.	MC SHALL PROVIDE SCHEDULING EQUIPMENT ACCESS WALKWAYS AND WALK-ON MATS SERVING THE AC EQUIPMENT WITH THE GC. FINAL STRUCTURAL DESIGN OF THE WALKWAYS SHALL BE BY THE STRUCTURAL ENGINEER AND THE ARCHITECT. THE CONSTRUCTION OF THE WALKWAYS SHALL BE BY THE GC AS INDICATED ON THE ARCHITECTURAL AND MECHANICAL DRAWINGS AND AS REQUIRED BY THE MANUFACTURER.																
37.	SHAFTS AND HORIZONTAL ENCLOSURES USED FOR RETURN AIR, EXHAUST AIR, OR ARE PART OF THE SMOKE CONTROL SYSTEM SHALL BE CONSTRUCTED AIRTIGHT. SHAFTS SHALL BE CONSTRUCTED TO WITHSTAND NEGATIVE OR POSITIVE PRESSURE OF 10 PSF.																
38.	THE MC SHALL COORDINATE DUCT ENCLOSURE REQUIREMENTS WITH THE GC.																
39.	TOILET ROOM ACCESSORIES SUCH AS GRAB BARS, TOILET PAPER DISPENSERS, SEAT GUARD DISPENSERS, ETC., SHALL BE FURNISHED BY THE GC. SUPPORTS FOR ACCESSORIES AND PARTITIONS SHALL BE INSTALLED BY THE GC. INSTALLATION LOCATIONS SHALL BE COORDINATED WITH THE ARCHITECT AND AS REQUIRED BY CODES AND ADA STANDARDS. INVENTORY, RECEIPT AND DELIVERY TO DESTINATION/ROOMS BY GC.																
40.	WEATHERPROOFING AND WATERPROOFING BY GC.																
41.	UTILITY PIPING PENETRATING THE BUILDING TO WITHIN 5 FEET PERPENDICULAR FROM THE BUILDING BY MC. MC TO COORDINATE LOCATIONS AND ELEVATIONS WITH GC.																
42.	GC TO SIZE AND INSTALL THE ACTUATOR. VERIFY CONTROL OPTIONS WITH DAMPER USE.																
43.	GC TO PROVIDE J-BOLTS, REBAR, IMBED PLATES, IMBED BOLTS, ETC. AS REQUIRED FOR CURB AND PAD CONSTRUCTION. MC SHALL PROVIDE DIMENSIONAL REQUIREMENTS TO GC.																
44.	GC SHALL CONSTRUCT CONCRETE FORMING AND FRAMING AS REQUIRED TO SUPPORT MECHANICAL EQUIPMENT. MC SHALL COORDINATE SIZES AND LOCATIONS WITH GC.																
45.	CC SHALL COORDINATE LOCATION AND SIZE OF TRANSFORMER WITH EC.																
46.	SEE ALSO SMOKE CONTROL/PRESSURIZATION FAN.																
47.	EC SHALL PROVIDE AND INSTALL CONTROL VOLTAGE TRANSFORMER WITH ANY REQUIRED STARTERS.																
48.	SWITCHES PROVIDED WITH EQUIPMENT BY EQUIPMENT SUPPLIER.																
49.	MECHANICAL EQUIPMENT NOISE ASSESSMNET TO BE PROVIDED BY PROJECT ACQOISITION. ALL EQUIPMENT ISOLATION AND OTHER DUCT/PIPING MITIGATION BY MC. ALL ROOM MITIGATION BY G.C.																
50.	FAC TO COORDINATE LOCATION AND ACCESS, GC TO FURNISH AND INSTALL ACCESS DEVICES.																

Perkins&Will

1301 5th Ave
#2300, Seattle,
WA 98101
1-12063816000
[www.perkinswill.com](#)

CONSULTANTS

FOOD SERVICE

INMAN FOOD SERVICES
3807 Charlotte Avenue,
Nashville, Tennessee 37209

CIVIL

AHBL
1200 6th Ave #1620,
Seattle, WA 98101

STRUCTURAL

PCS
1011 Western Avenue, Suite 810
Seattle WA 98104

CONTRACTOR

ABBOTT CONSTRUCTION
3408 1st Ave S,
Seattle, WA 98134

PLUMBING

MACDONALD MILLER
17930 International Blvd.,
Suite 120, SeaTac, WA 98188

MECHANICAL

MACDONALD MILLER
17930 International Blvd.,
Suite 120, SeaTac, WA 98188

ELECTRICAL

EDB SERVICES
14900 Interurban Ave S.
Seattle, WA 98168

PROJECT MANAGER

TURNER & TOWNSEND
920 Fifth Avenue,
Seattle, WA, 98104



MacDonald-Miller

FACILITY SOLUTIONS

17930 Intl. Blvd, Suite 120 SeaTac, WA 98188
Phone: 206-763-9400 [www.macmiller.com](#)

MultiCare

Good Samaritan

Hospital Kitchen

401 15th Ave SE,
Puyallup,
WA 98372

MultiCare

Good Samaritan Hospital

MULTICARE

KEY PLAN

ISSUE CHART

MARK

ISSUE

DATE

Job Number

7725-4055

TITLE

SCHEDULES - MECHANICAL

SHEET NUMBER

TM0.03