



Modular Wetland Activation

Step By Step Early Learning Center

Complete

Project Name:	Step By Step Early Learning Center
Project Number	814328
Site Address	3308 8th Ave SE, Puyallup, WA 98372, USA
Service Provider Company Name	Raingardens Northwest, Inc
Personnel Name	Jonathan Dittmar
Phone Number	(253) 212-3835
Activation Date & Time	20.01.2026 12:15 PST
Contractor Company	RW Scott Construction Company
Contact Name & Email	Brandon Young, brandon@rwscottconstruction.com
Phone Number (No Dashes)	3603672580
Unit Information, Observations & Plant Information (If Applicable)	
Unit Information, Observations & Plant Information (If Applicable) 1	
Unit Number	Unit 10
Unit Type	UG Vault
Unit Size	MWS-L-6-8
Unit Geolocation	703 33rd Ct E Puyallup WA 98372 United States (47.185534286847236, -122.2488746345204)
Weather Conditions	Sunny

Site stabilized?

Yes

Final paving complete?

Yes

Photos of the exterior and access of the vault including upstream/downstream and surrounding of the unit



Photo 1



Photo 2



Photo 3



Photo 4



Photo 5



Photo 6



Photo 7



Photo 8

Confined Space Entry

Are you making a confined space entry?

Yes

Have you been given permission to enter the space?

Yes

Oxygen (O2) Reading %

20.9

Combustible Gas Reading %

0

Carbon Monoxide (CO2) Reading PPM

0

Hydrogen Sulfide (H2S) Reading PPM

0

Are the atmospheric conditions acceptable for entry?

Yes

Is the entrance to the space considered safe?

Yes

Name and Title of Attendant

Bryce Eubanks, Stormwater Field Technician

Initial here: Entrant acknowledges that all data listed above is an accurate reflection of the conditions surrounding the confined space entry.

Jonathan Dittmar
20.01.2026 12:22 PST

Damage to manhole/hatches?

No

Manholes/Hatches permanently attached?

Yes

Damage to MWS concrete vault?

No

Photos of all chambers and filter cartridges



Photo 9



Photo 10

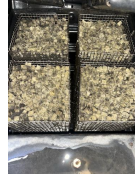


Photo 11



Photo 12

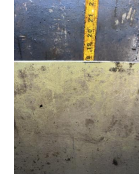


Photo 13



Photo 14



Photo 15



Photo 16



Photo 17



Photo 18



Photo 19



Photo 20



Photo 21

MWS Internal Installed correctly?

Yes

Open or Closed Wetland Media Bed?

Closed

Wetland Media Installed/Mulched?

Yes

Curb Inlet? Grate Inlet? Pipe Inlet?

Pipe Inlet

Pipe invert inlet correct?

Yes

Outflow pipe flush w/floor & no standing water?

Yes

Bypass pipe/Wier clear of debris?

Yes

Orifice installed & functioning properly?

Yes

Bypass extension present.

Dvert installed? (If applicable)

N/A

Bypass cover installed? (If applicable)

N/A

Plants Required?

No

Photos of the exterior of the vault and unit access secured after activation is completed



Photo 22



Photo 23



Photo 24

Is the Modular Wetland system activated?

Yes

The Modular Wetland Stormwater System and its components have been installed in accordance with the manufacturer's specifications. Based on this inspection conducted by Contech's authorized third party, Raingardens Northwest, this report certifies that the system has been properly installed and is operating as intended. Ongoing maintenance is essential to ensure the stormwater treatment system. Routine servicing should be scheduled to maintain optimal system performance over time.

Jonathan Dittmar
20.01.2026 12:23 PST

Media summary



Photo 1



Photo 2



Photo 3



Photo 4



Photo 5



Photo 6



Photo 7



Photo 8



Photo 9



Photo 10



Photo 11



Photo 12



Photo 13



Photo 14



Photo 15



Photo 16



Photo 17



Photo 18



Photo 19



Photo 20



Photo 21



Photo 22



Photo 23



Photo 24



Product Warranty

MODULAR WETLANDS SYSTEM

Contech Engineered Solutions products are engineered and manufactured with the intent to be considered as permanent infrastructure. Contech Engineered Solutions warrants its products to be free of manufacturer's defects for a period of 1 year from the date of purchase. If a warranty claim is made and determined to be valid, Contech Engineered Solutions will either repair or replace the product, at the discretion of Contech Engineered Solutions. Warranty claims must be submitted, evaluated, and approved by Contech Engineered Solutions for the claim to be determined to be valid. All warranty work and/or corrective action must be authorized by Contech Engineered Solutions prior to beginning the work not covered by this warranty. There are no other warranties either expressed or implied other than what is specifically specified herein. Abusive treatment, neglect, or improper use of Contech Engineered Solutions products will not be covered by this warranty.



855.566.3938
stormwater@forterrabp.com