



TECHNICAL MEMORANDUM

Prepared for: Rick Hand, P.E.
Sitts & Hill Engineers, Inc.
4815 Center St.
Tacoma, WA 98409

February 16, 2016

Prepared by: Grette Associates^{LLC}
2102 North 30th Street, Ste A
Tacoma, WA 98403

File No.: 402.010

Re: Puyallup School District – South Hill Transportation Center Wetland Verification

1 INTRODUCTION

Grette Associates is under contract with Sitts & Hill Engineers, Inc. to prepare a technical memorandum that summarizes the wetland reconnaissance that was performed on February 16, 2016 at the South Hill Transportation Center (SHTC) located at 1501 39th Ave. SW in Puyallup, Washington.

This memo is in support of the City of Puyallup's request for a wetland verification to evaluate the previously delineated wetland that is located southwest of the Puyallup School District's proposed project. The proposed project will place a portable building next to an existing parking area at the SHTC site.

2 METHODS

Grette Associates completed a reconnaissance on February 16, 2016 to determine if the previously identified Category III wetland boundary has significantly changed from what is shown on the proposed site plan (see attached). Vegetation, soils, and hydrology were evaluated according to the procedures described in the U.S. Army Corps of Engineers (USACE) *Federal Wetland Delineation Manual* (1987) and the USACE's *Regional Supplement to the Corps of Engineers Wetland Delineation Manual: Western Mountains, Valleys, and Coast Region (Version 2.0)* (2010).

3 RESULTS

The wetland reconnaissance identified one wetland feature that is located in the general area where the previous Category III wetland was delineated. This wetland feature is situated in a depression area that is approximately 200 feet southwest of the proposed project. Based on topographic constraints and data collected, Grette Associates does not believe that the wetland boundary has significantly changed since the previous wetland delineation. Furthermore, Grette Associates preliminarily rated this feature according to the requirements defined in Chapter 21.06 of the Puyallup Municipal Code (PMC). Based on these requirements, the wetland feature is considered a Category III wetland. According to PMC 21.06.930, Category III wetlands with

a high intensity land use are subject to an 80 foot buffer (PMC 21.06.930). Therefore, the proposed project is approximately 120 feet northeast of the wetland buffer associated with the identified wetland. Based on the approximate distance from the wetland and associated buffer, the proposed project would not be expected to result in impacts to the critical areas.

If you have any questions on the wetland reconnaissance, please contact me at (253) 573-9300, or by email at chadw@gretteassociates.com.

Regards,



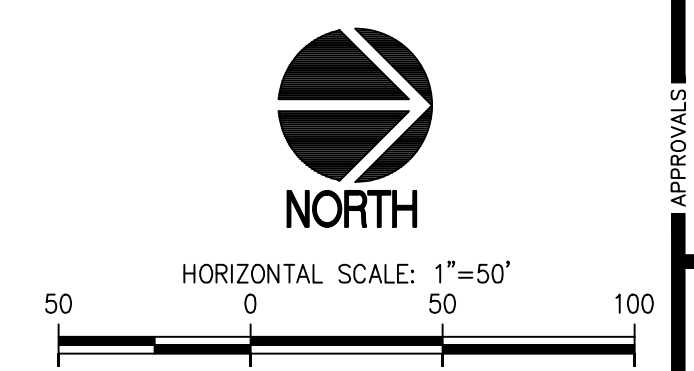
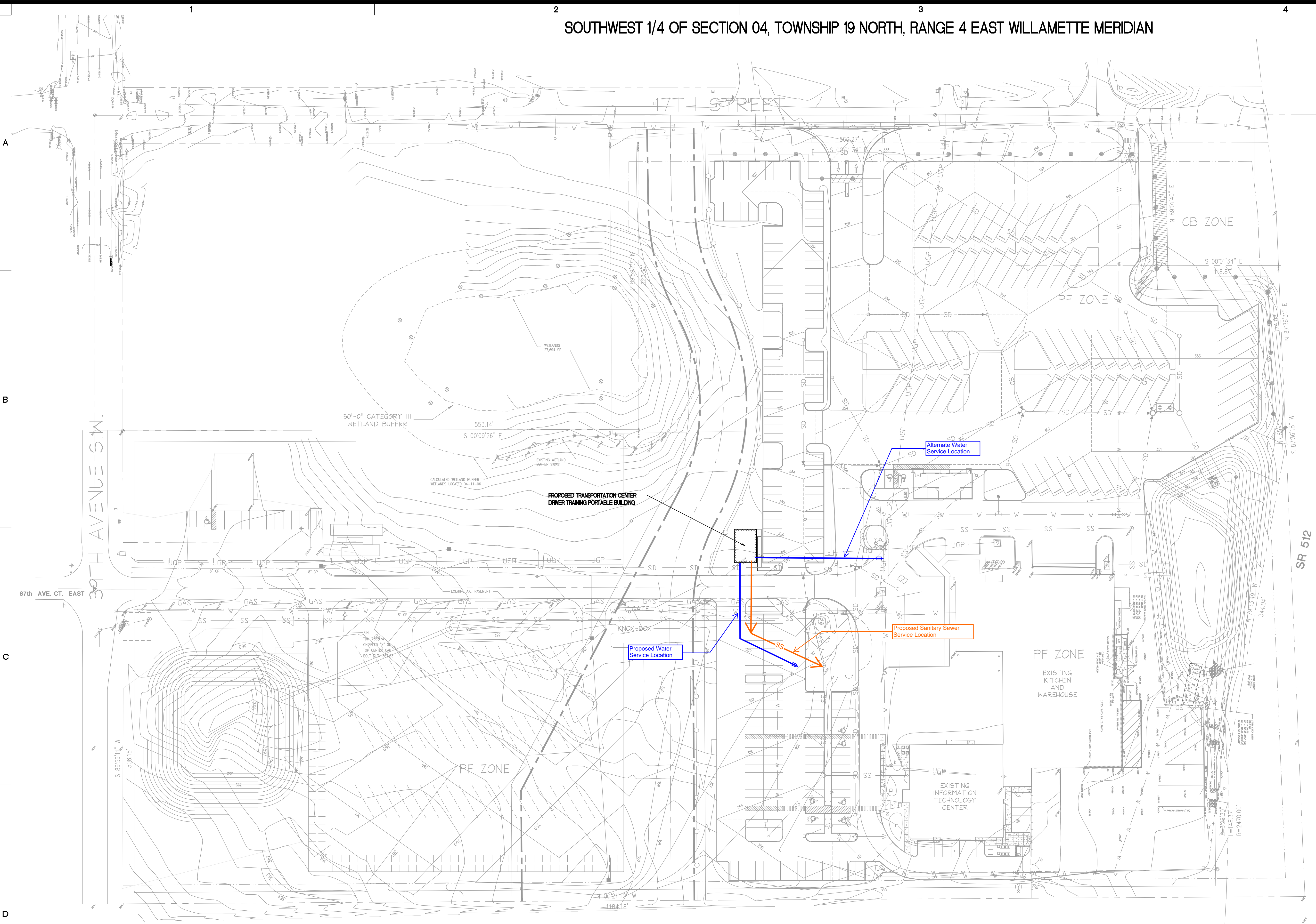
Chad Wallin
Biologist

References:

Environmental Laboratory (Corps). 1987. Corps of Engineers Wetlands Delineation Manual. Technical Report Y-87-1, US Army Engineer Waterways Experiment Station, Vicksburg, Mississippi.

U.S. Army Corps of Engineers (Corps). 2010. *Regional Supplement to the Corps of Engineers Wetland Delineation Manual: Western Mountains, Valleys, and Coast Region (Version 2.0)*, ed. J. S. Wakeley, R. W. Lichvar, and C. V. Noble. ERDC/EL TR-10-3. Vicksburg, MS: U.S. Army Engineer Research and Development Center.

SOUTHWEST 1/4 OF SECTION 04, TOWNSHIP 19 NORTH, RANGE 4 EAST WILLAMETTE MERIDIAN



SITE PLAN
SCALE: 1"=50'

P:\16784\16784\Drawings\16784-CP10.dwg last edited: 12/08/15 12:13pm by: rfb

<p>PROJECT SOUTH HILL TRANSPOR. DRIVER TRAINING PORTABLE BUILDING PUYALLUP, WASHINGTON</p>	<p>PREPARED FOR PUYALLUP SCHOOL DISTRICT NO. 3 323 12TH STREET N.W. PUYALLUP, WASHINGTON 98371 (253) 841-8641</p>	<p>DESIGNED: R.C.H. DRAWN: J.M.W. CHECKED: R.C.H. DATE: XX-XX-XXXX SCALE: AS NOTED</p>	<p>APPROVALS</p> <p>REVISIONS</p>	
<p>PREPARED BY SITTS & HILL ENGINEERS, INC. CIVIL • STRUCTURAL • SURVEYING 4818 CENTER STREET TACOMA, WA 98409 PHONE: (253) 474-9449 FAX: (253) 474-0153 http://www.sitts-hill-engineers.com</p>		<p>PROJECT SHEET TITLE SITE PLAN</p> <p>SHEET NO. SP10</p> <p>1 OF 1 PROJECT NO. 16784</p>		