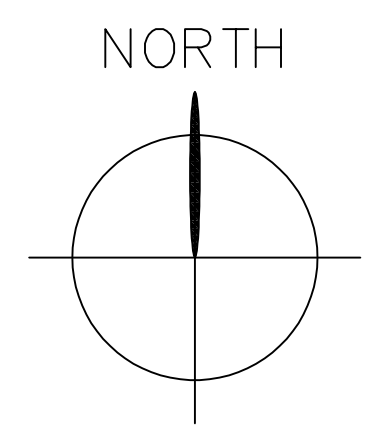


SITE PLAN 2
SCALE: N.T.S.



Reviewed by Ryan Messer
NICET 3 #135229

E²Systems
E-SQUARED SYSTEMS, LLC
P.O. BOX 731227 PUYALLUP, WA 98373
PH: 253.284.3707 FAX: 253.284.3714

REV.	DATE	DRN	ISSUE COMMENTS
0	2-25-21	SMD	ISSUED FOR APPROVAL

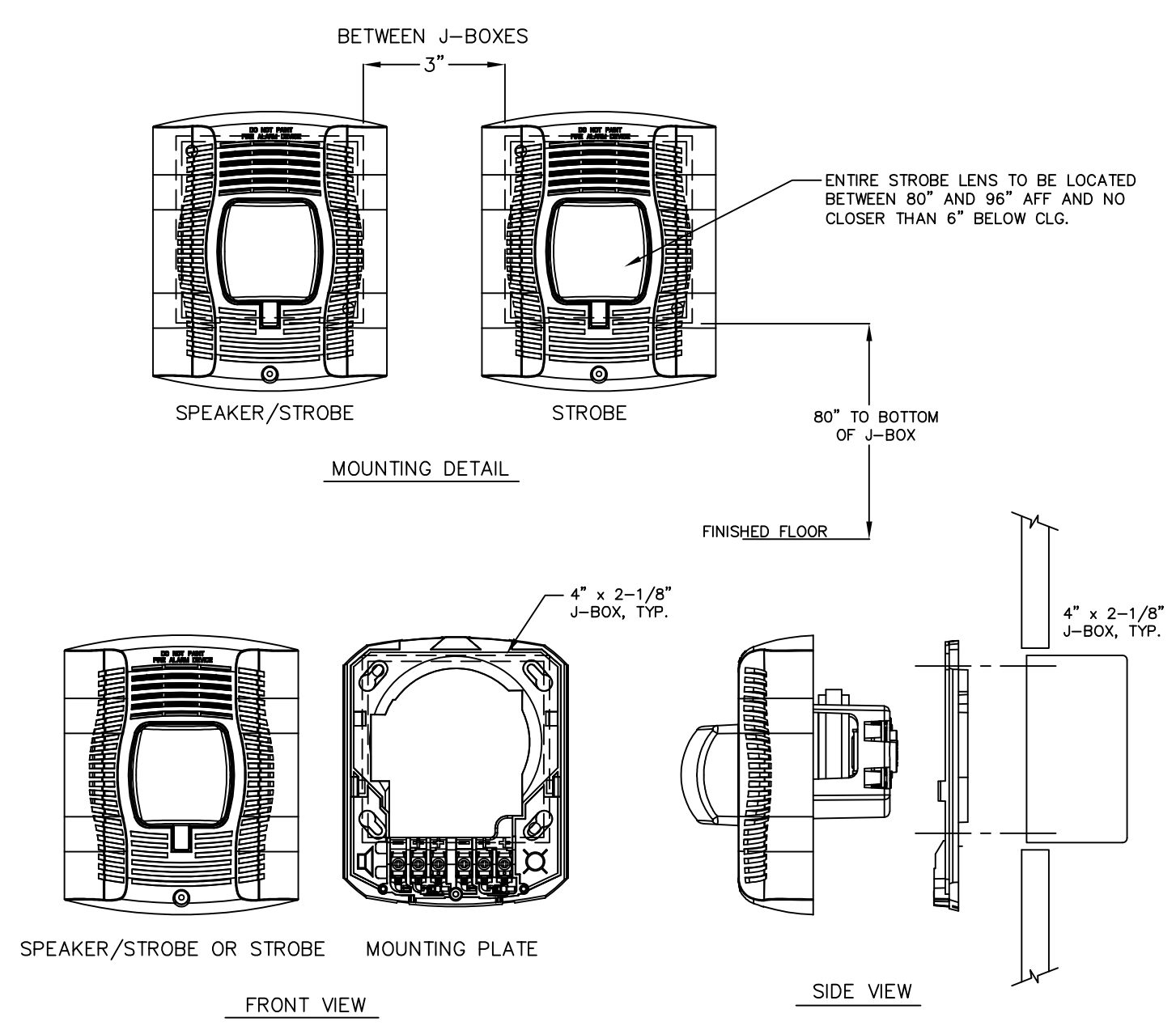
SCALE: 1/8"=1'-0"
FIRE/LIFE SAFETY SYSTEM
FLOOR AND SITE PLAN

PSD TRANSPORTATION GLAD PORTABLE
FIRE ALARM SYSTEM
1501 39TH AVE SW
PUYALLUP, WA 98373

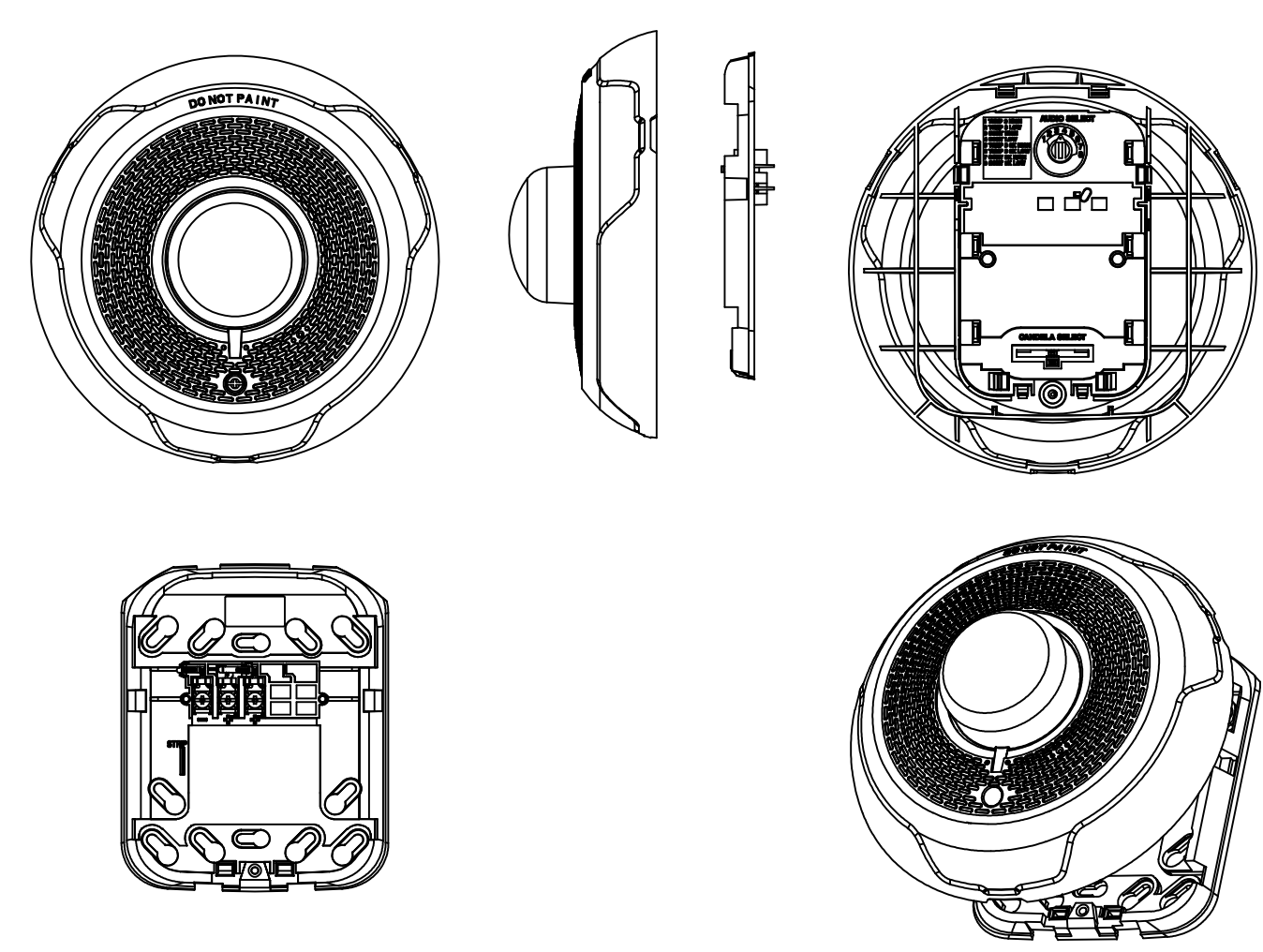
JOB # 1191M

FA-02

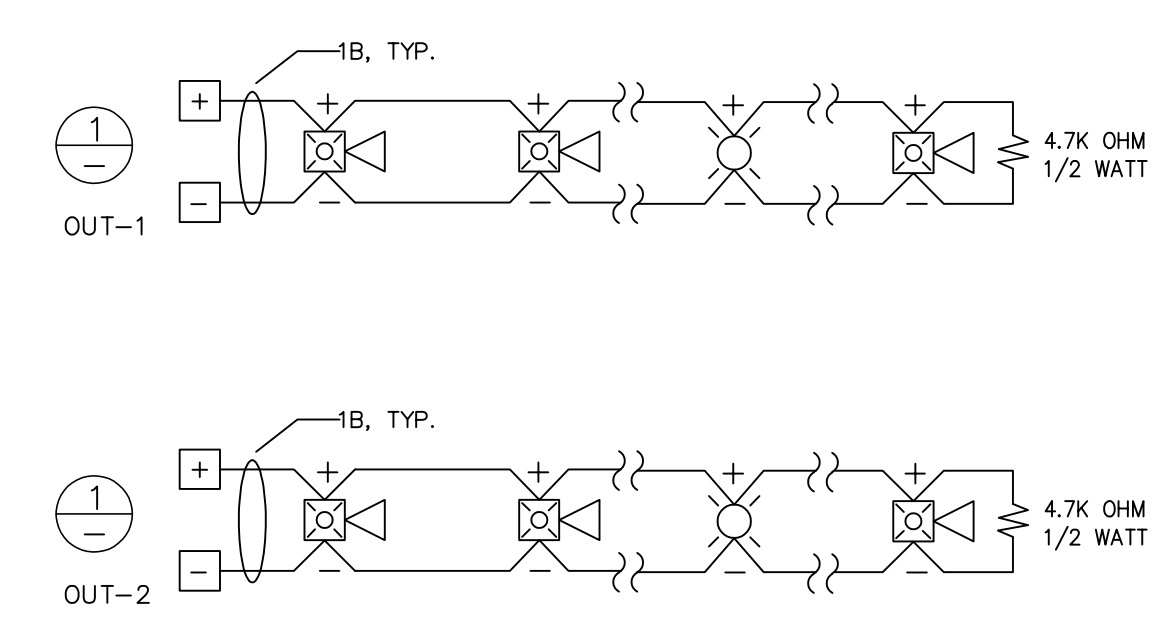
SET STROBE CANDELA OUTPUT AS SHOWN ON PLANS.
SET HORNS TO LOW UNLESS NOTED OTHERWISE.



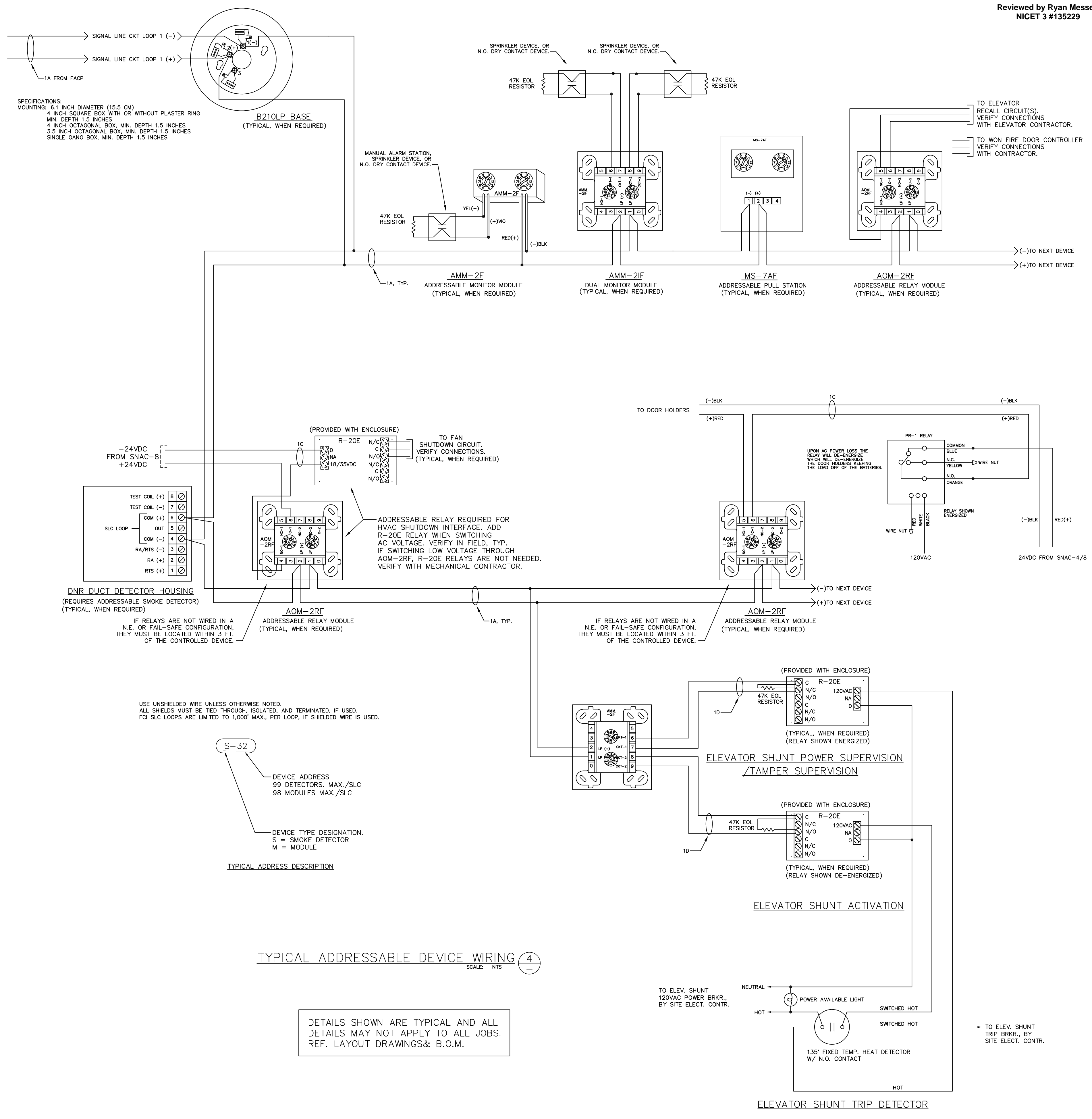
TYPICAL WALL MOUNT DETAIL (1)
SCALE: NTS



TYPICAL NAC WIRING DETAIL (3)
SCALE: NTS



TYPICAL NAC WIRING DETAIL (3)
SCALE: NTS



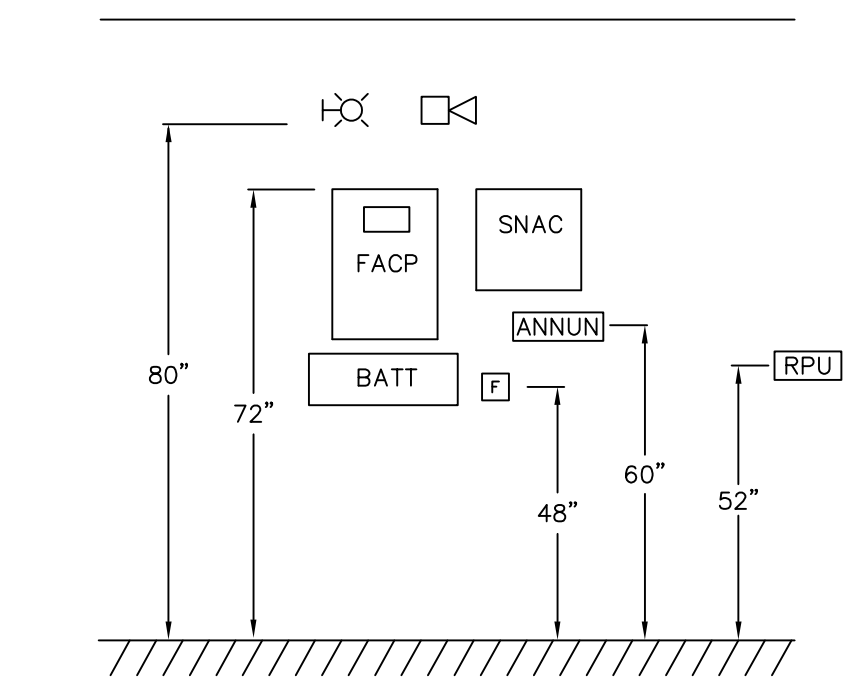
TYPICAL ADDRESSABLE DEVICE WIRING (4)
SCALE: NTS

Reviewed by Ryan Messer
NICET 3 #135229

REV.	DATE	DRN	ISSUE COMMENTS
0	2-25-21	SMD	ISSUED FOR APPROVAL

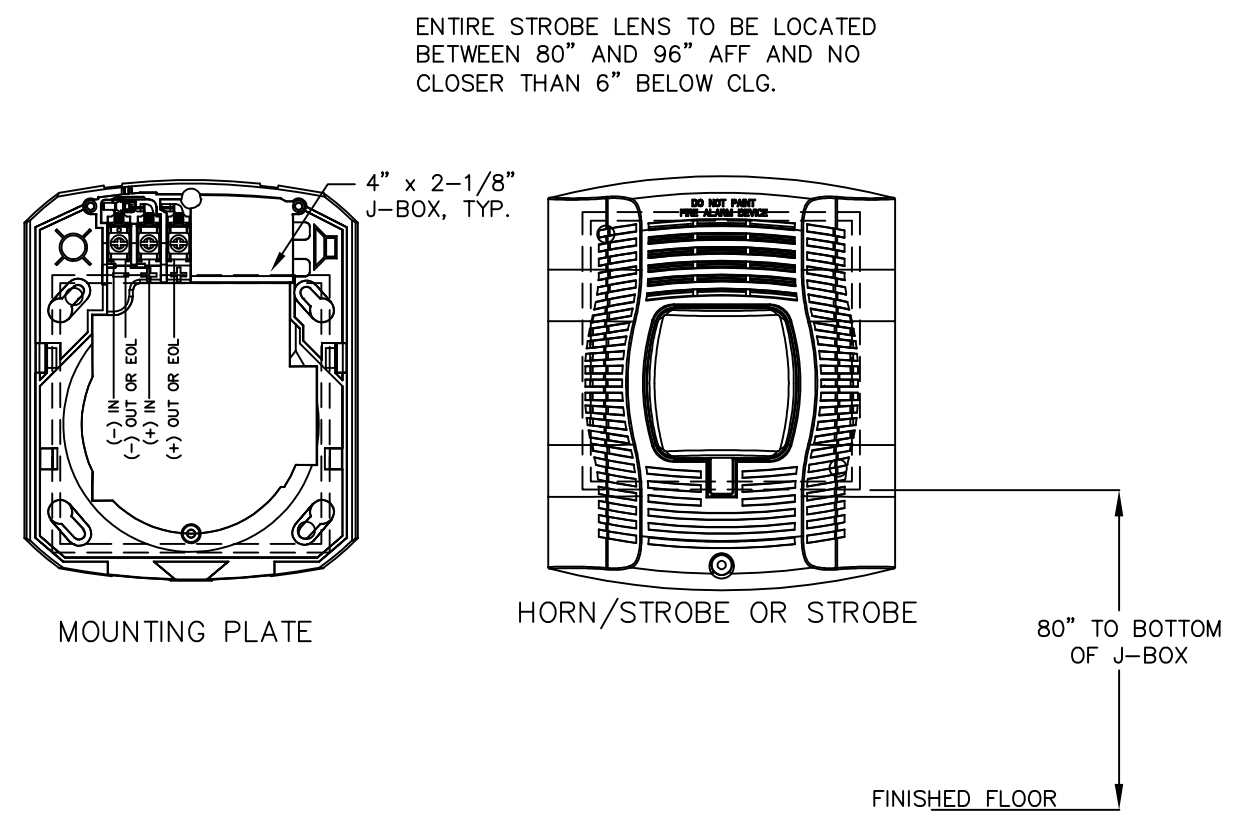
SCALE: 1/8"=1'-0"
FIRE/LIFE SAFETY SYSTEM
DEVICE DETAIL

PSD TRANSPORTATION GLAD PORTABLE
FIRE ALARM SYSTEM
1501 39TH AVE SW
PUYALLUP, WA 98373

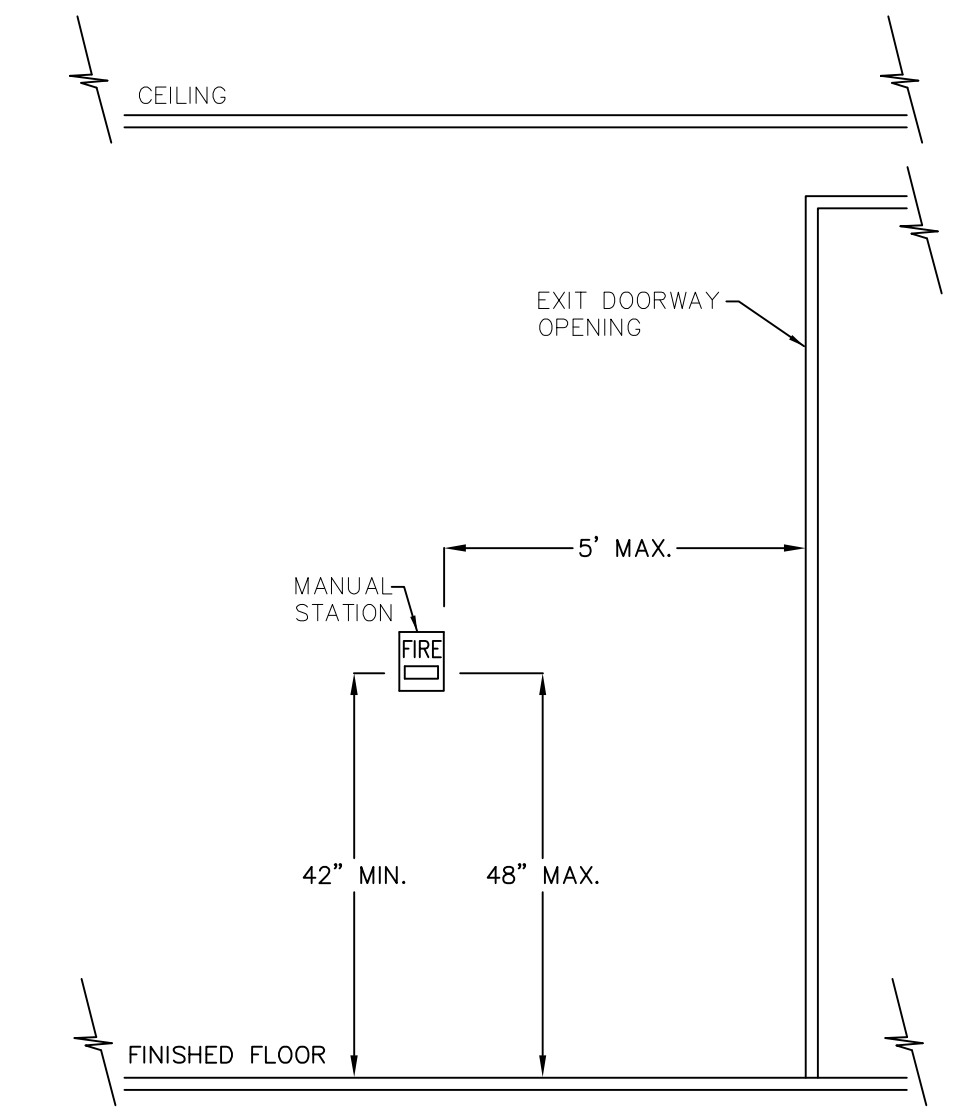


EQUIPMENT MOUNTING DETAIL 1
SCALE: NTS

NOTES:
1. DETAIL NOT INTENDED TO SHOW SPATIAL RELATIONSHIP OF DEVICES. REFERENCE FLOOR PLANS FOR ACTUAL LOCATIONS.

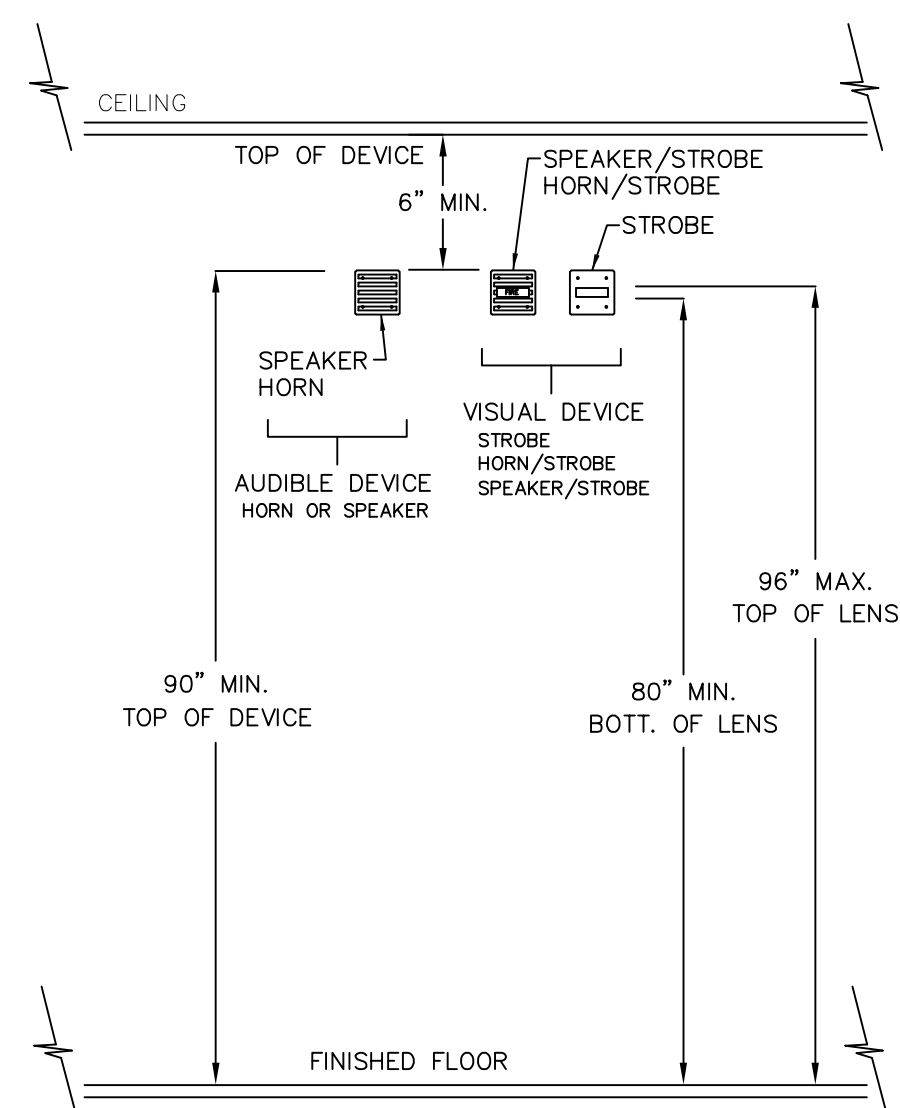


TYPICAL HORN & STROBE WALL MOUNT DETAIL 2
SCALE: NTS



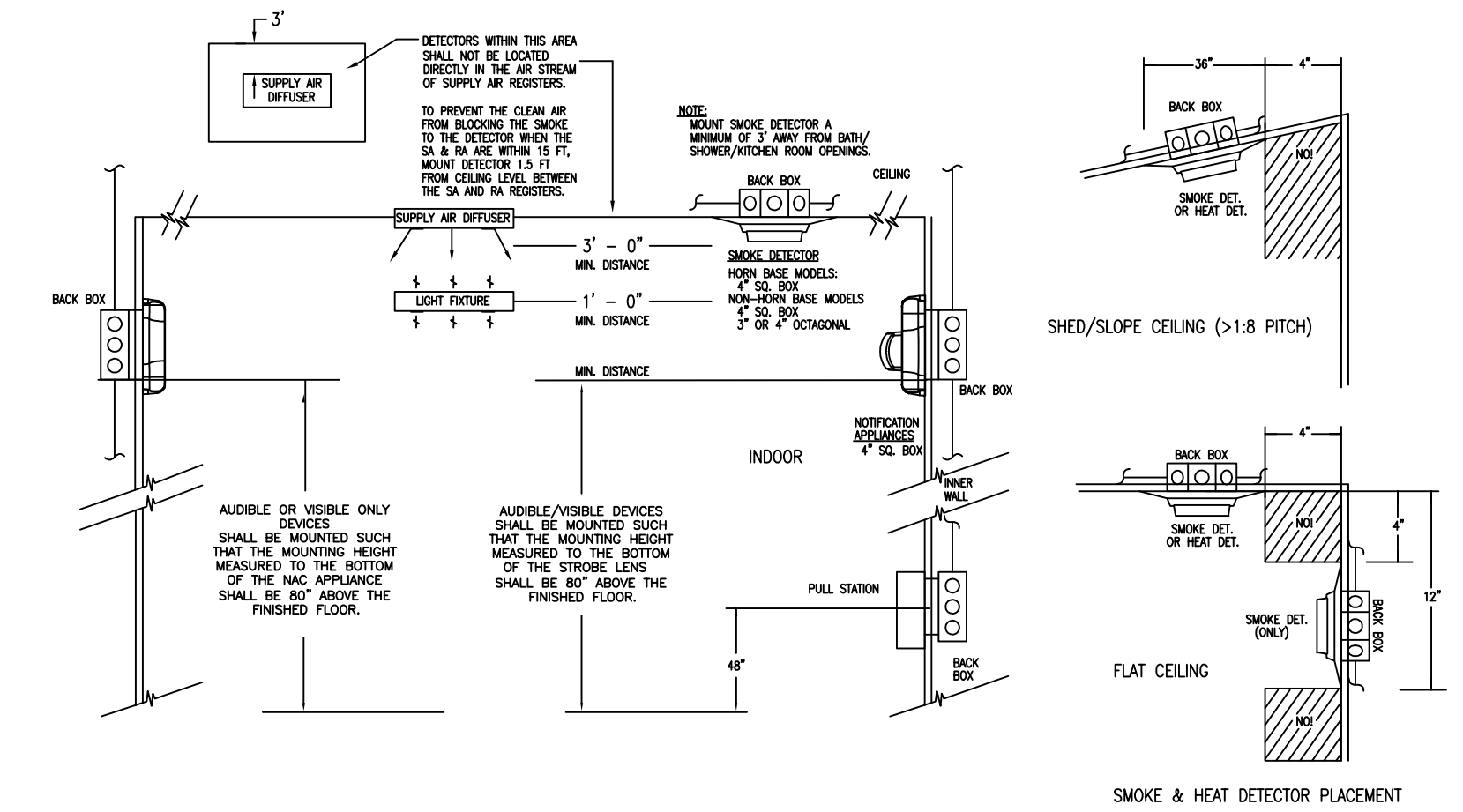
INSTALLATION NOTES:
1. THE OPERABLE PART OF EACH MANUAL FIRE ALARM BOX SHALL BE NOT LESS THEN 42" AND NOT GREATER THAN 48" A.F.F.
2. MANUAL FIRE ALARM BOXES SHALL BE LOCATED WITHIN 5' OF THE EXIT DOORWAY OPENING ON EACH FLOOR.

MANUAL STATION MOUNTING DETAILS 3
SCALE: NTS



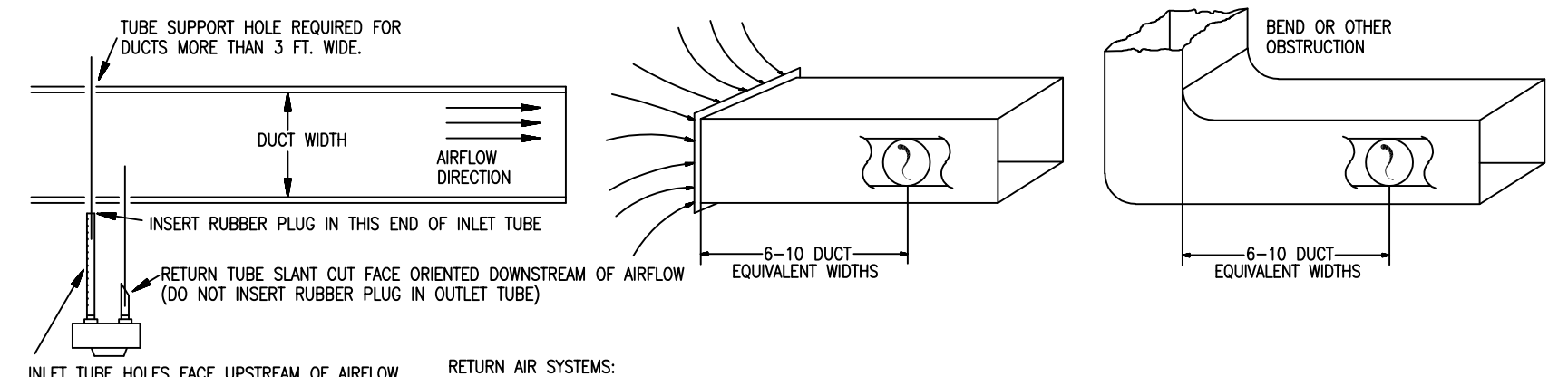
INSTALLATION NOTES:
1. MOUNT VISUAL AND COMBINATION AUDIBLE/VISUAL APPLIANCES SUCH THAT THE ENTIRE LENS IS NOT LESS THAN 80" AND NOT GREATER THAN 96" A.F.F.
2. MOUNT AUDIBLE APPLIANCES SUCH THAT THE TOP OF THE APPLIANCE IS AT A MINIMUM HEIGHT OF 90" A.F.F. AND BELOW THE FINISHED CEILING AT A MINIMUM HEIGHT 6".
3. IN AREAS WHERE MORE THEN TWO VISIBLE NOTIFICATION APPLIANCES ARE IN ANY FIELD OF VIEW, THEY SHALL FLASH IN SYNCHRONIZATION.
4. IN CORRIDOR APPLICATIONS:
A. VISIBLE NOTIFICATION APPLIANCES SHALL BE LOCATED WITHIN 15' FROM THE END OF A CORRIDOR WITH SEPARATION NOT GREATER THAN 100' BETWEEN APPLIANCES.
B. WALL-MOUNTED VISIBLE NOTIFICATION APPLIANCES SHALL BE PERMITTED IN EITHER THE END WALL OR THE SIDE WALL OF THE CORRIDOR.
C. IF THERE IS AN INTERRUPTION OF THE CONCENTRATED VIEWING PATH, SUCH AS A FIRE DOOR, AN ELEVATION CHANGE, OR ANY OTHER OBSTRUCTION, THE AREA SHALL BE TREATED AS A SEPARATE CORRIDOR.
5. SLEEPING AREAS:
A. FOR ROOMS WITH A LINEAR DIMENSION GREATER THAN 16', THE VISIBLE NOTIFICATION APPLIANCES SHALL BE LOCATED WITHIN 16' OF THE PULLOW.
B. IF THE DISTANCE FORM THE TOP OF THE STROBE LENS IS EQUAL TO OR GREATER THEN 24" FROM THE CEILING THEN THE STROBE SHALL BE 110cd. IF THE DISTANCE FROM THE TOP OF THE STROBE LENS IS LESS THEN 24" TO THE CEILING THE STROBE SHALL BE 177cd.

DETAILS SHOWN ARE TYPICAL AND ALL DETAILS MAY NOT APPLY TO ALL JOBS. REF. LAYOUT DRAWINGS& B.O.M.



GENERAL NOTES:
A. DO NOT APPLY POWER TO ANY DEVICE UNTIL AUTHORIZED BY A HONEYWELL REPRESENTATIVE.
B. SEE FLOOR PLANS FOR ALL DEVICE LOCATIONS, DEVICE COUNTS, AND DEVICE ADDRESSES.
C. FOLLOW DEVICE INSTALLATION INSTRUCTIONS INCLUDED WITH DEVICES.
D. DETECTOR GUIDELINES:
NO SMOKE DETECTORS ALLOWED IN GARAGES.
NO SMOKE DETECTORS ALLOWED IN UNFINISHED ATTICS.
NO SMOKE DETECTORS ALLOWED IN AREAS WITH >1000' OR <407'.
ION SMOKE DETECTORS MUST BE > 20' FROM COOKING APPLIANCES.
(PHOTO SMOKE DETECTORS ALLOWED <20' FROM COOKING APPLIANCE)
NO SMOKE DETECTORS WITHIN 3' FROM DOOR TO KITCHEN OR SHOWER/TUB ROOM
NO SMOKE DETECTORS WITHIN 3' HORIZONTAL FROM CEILING FAN BLADE TIP.
SMOKE DETECTORS ARE REQUIRED IN BASEMENTS ON CEILING ADJACENT TO STAIRWELLS.

ADDITIONAL DEVICE MOUNTING DETAILS 5
SCALE: NTS



RETURN AIR SYSTEMS:
SMOKE DETECTORS SHALL BE INSTALLED IN RETURN AIR SYSTEMS WITH A DESIGN CAPACITY GREATER THAN 2000 CFM (0.09 m/s) IN THE RETURN AIR DUCT OR PLENUM UPSTREAM OF ANY FILTERS, EXHAUST AIR CONNECTIONS, OUTDOOR AIR CONNECTIONS OR DECONTAMINATION EQUIPMENT AND APPLIANCES.
COMMON SUPPLY AND RETURN AIR SYSTEMS:
WHERE MULTIPLE AIR HANDLING SYSTEMS SHARE COMMON SUPPLY OR RETURN AIR DUCTS OR PLENUMS WITH A COMBINED DESIGN CAPACITY GREATER THAN 2000 CFM (0.9m/s), THE RETURN AIR SYSTEM SHALL BE PROVIDED WITH SMOKE DETECTORS.
RETURN AIR RISERS:
WHERE RETURN AIR RISERS SERVE TWO OR MORE STORES AND SERVE ANY PORTION OF A RETURN AIR SYSTEM HAVING A DESIGN CAPACITY GREATER THAN 15000 CFM (7.1m/s), SMOKE DETECTORS SHALL BE INSTALLED AT EACH STOREY. SUCH SMOKE DETECTORS SHALL BE LOCATED UPSTREAM OF THE CONNECTION BETWEEN THE RETURN AIR RISER AND ANY AIR DUCTS OR PLENUMS
SUPPLY AIR SMOKE DETECTORS:
IF INSTALLED, SUPPLY AIR SMOKE DETECTORS SHALL BE MOUNTED IN THE DUCT DOWNSTREAM OF BOTH THE FAN AND THE FILTERS. ADDITIONAL SMOKE DETECTORS IN THE SUPPLY AIR SYSTEM ARE NOT REQUIRED WHERE THE AIR PASSES THROUGH OTHER SMOKE COMPARTMENTS.
SMOKE DAMPERS THAT ARE PART OF A SMOKE BARRIER SHALL BE INSTALLED IN THE PLANE OF THE FIRE PARTITION AND NOT AFTER THE FIRST AIR DUCT INLET OR OUTLET, WHOEVER IS CLOSER TO THE SMOKE BARRIER. IF THE SMOKE DAMPER IS CONTROLLED BY AIR SYSTEM SMOKE DETECTOR IT SHALL BE LOCATED UPSTREAM OF THE SMOKE DAMPER BUT AFTER ANY INLET OR OUTLET IN THAT DUCT.
WHERE IN-DUCT SMOKE DETECTORS ARE INSTALLED IN CONCEALED LOCATIONS MORE THAN 10ft ABOVE THE FINISHED FLOOR, OR IN ARRANGEMENTS WHERE THE DETECTOR'S ALARM LIGHT IS NOT READILY VISIBLE TO RESPONDING PERSONNEL, THE DETECTOR SHALL BE PROVIDED WITH REMOTE ALARM INDICATORS TO BE INSTALLED IN A READILY ACCESSIBLE LOCATION AND SHALL BE CLEARLY LABELED TO INDICATE BOTH THEIR FUNCTION AND THE AIR HANDLING UNIT(S) ASSOCIATED WITH EACH DETECTOR. (EXCEPTION: WHERE THE SPECIFIC DETECTOR IN ALARM IS INDICATED AT THE CONTROL UNIT)

DUCT DETECTOR MOUNTING DETAILS 6
SCALE: NTS

MOUNTING HEIGHTS FOR WALL MOUNTED NOTIF APPLIANCES 4
SCALE: NTS

REV.	DATE	DRN	ISSUE COMMENTS
0	2-25-21	SMD	ISSUED FOR APPROVAL

SCALE: 1/8"=1'-0"
FIRE/LIFE SAFETY SYSTEM
MOUNTING DETAIL

PSD TRANSPORTATION GLAD PORTABLE
FIRE ALARM SYSTEM
1501 39TH AVE SW
PUYALLUP, WA 98373