

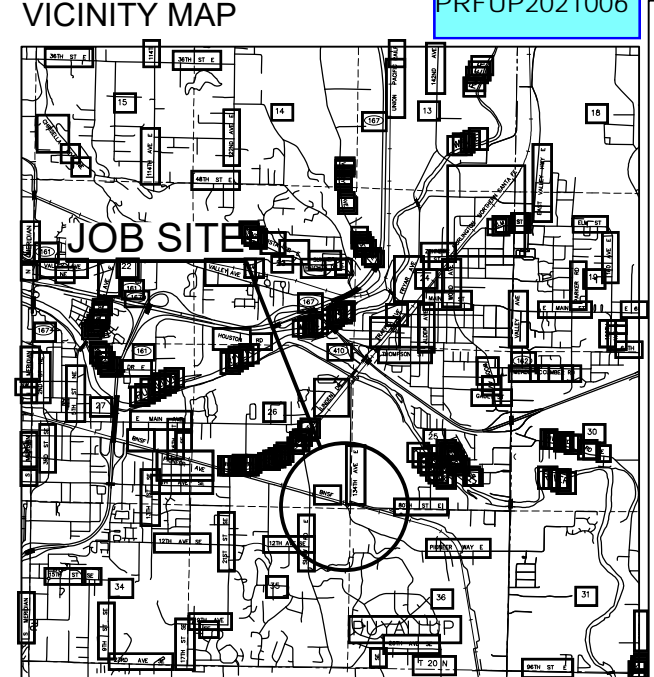
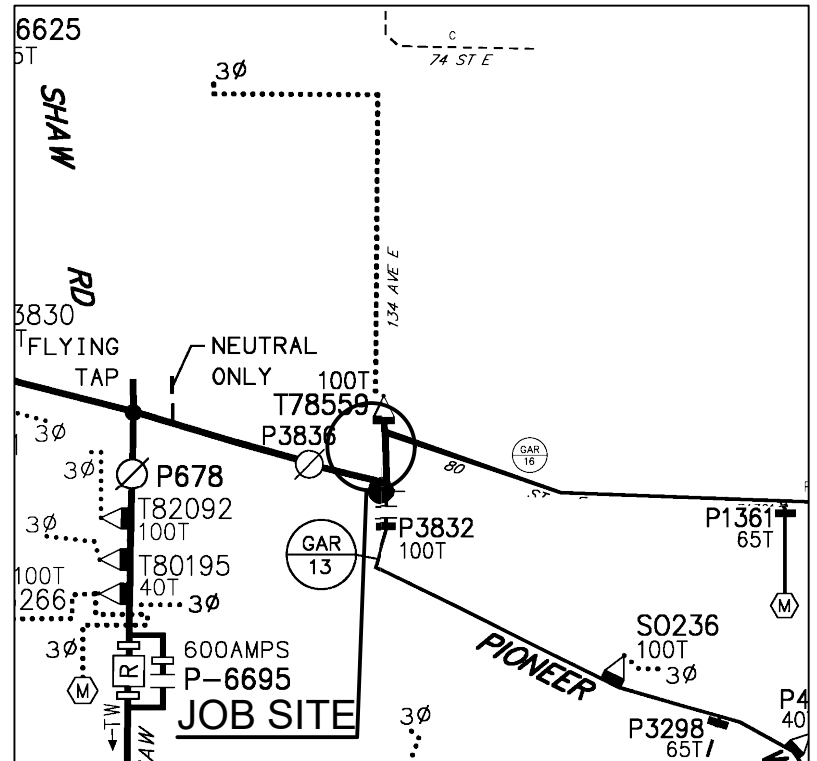
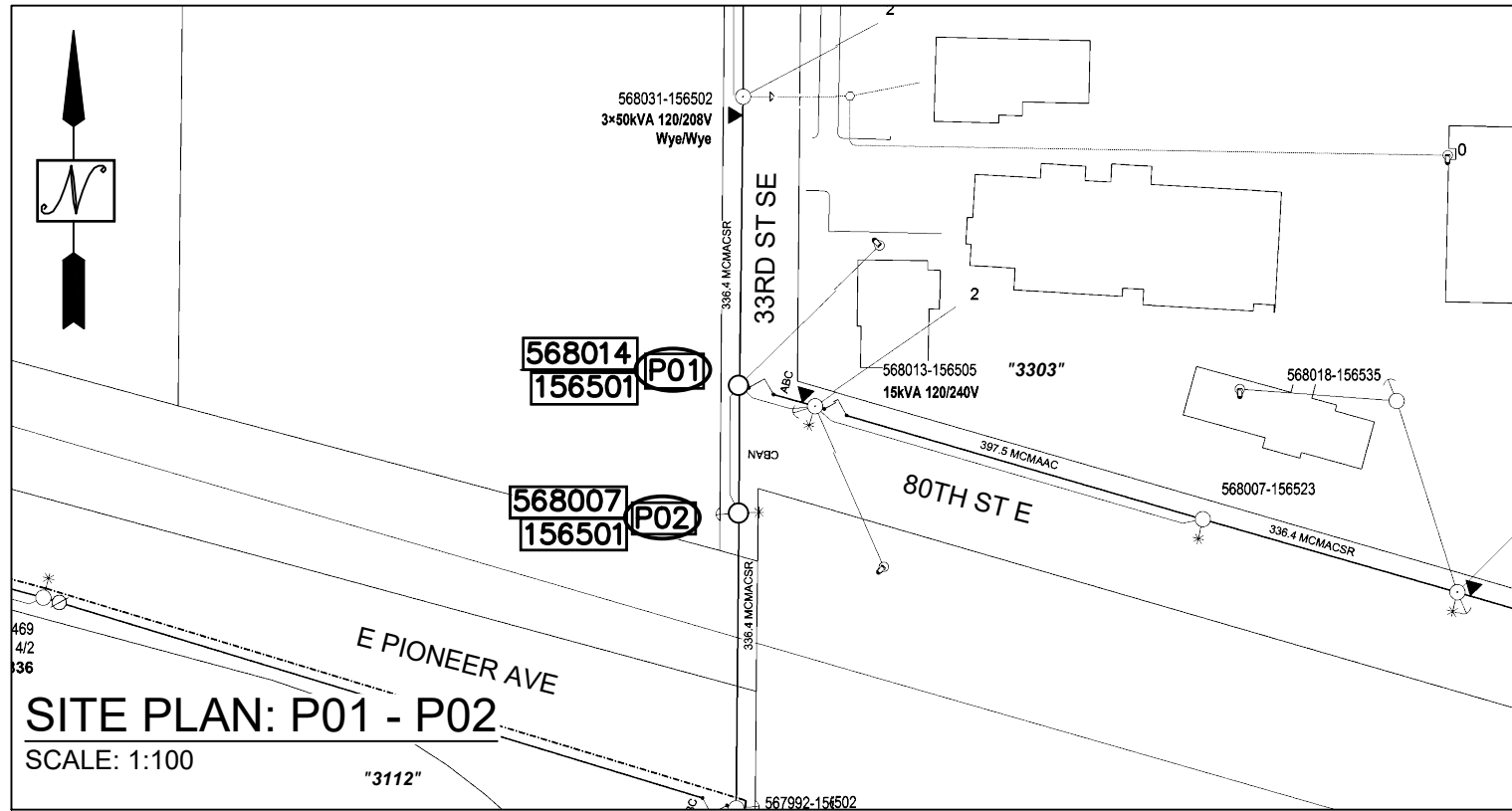
Oct 12, 2021 12:01pm X:\#Quanta\_PSE\_Shared\JFN\Stephen Kvamme\2021\Eng1-JFN\186060873 TK4859471 LUMEN\AutoCad\ SITE 186060873.dwg

**APPROVED**

PRFUP2021006

SAP W.O. #

186060873



**FOREMAN (CHECK BOX WHEN COMPLETED)**

- PSE Equipment LOCKED/SECURED & Work Area left in CLEAN/SAFE Condition.
- Grid, Cable, and Switch numbers INSTALLED & VERIFIED.
- Field Changes RED-LINED on As-built.
- Material VERIFIED and CHANGES noted on Paperwork.
- Total PRIMARY Cable noted on As-built.
- Company ID#'s RECORDED in correct location on As-built.
- Indicate correct FUSE SIZE on As-built & VERIFY proper PHASE.
- Deviations noted on the As-built and their reason.

I certify that the work performed meets PSE's standards and procedures and that all quality requirements are met.

Foreman's Signature \_\_\_\_\_

Print Name \_\_\_\_\_ Date \_\_\_\_\_

**CALL (800) 424-5555**

**2 BUSINESS DAYS BEFORE YOU DIG**

THIS SKETCH NOT TO BE RELIED UPON FOR EXACT LOCATION OF EXISTING FACILITIES

PROJECT PHASE	NOTIF#	ORDER#
PWR Superior	511981046	186060873
Sub Order		N/A
		N/A
		N/A

	Developer	Yes	Yes	PSE
"Locates Required"	No		No	
"Outages Required"	Yes		No	
"Flagging Required"	Yes		No	

**POWER GENERAL NOTES**

- All materials to be installed in accordance with Puget Sound Energy's (PSE) standards. Any deviation from this work sketch must be AUTHORIZED by Potelco's Project Manager and NOTED on the Foremans' Copy.
- All switching arrangements and/or outage arrangements are to be made with the Project Manager at least three (3) working days in advance.
- Contact the Utilities Underground Location Center (1-800-424-5555) at least 48 hours prior to commencing work to get the underground facilities located.
- All work is to be done in accordance with local municipal and county permit requirements as applicable.
- Incliment weather conditions may cause delays in construction times and dates.

REAL ESTATE/EASEMENT		PERMIT	
N/A		PIERCE COUNTY	
FUNCTION	CONTACT	PHONE NO	DATE
PROJECT MGR	S. KVAMME	253-553-6200	10/12/21
ENGR - POWER	J. REYNA	253-259-7076	10/12/21
ENGR - GAS	N/A	N/A	N/A
DRAWN BY	S. KVAMME	253-553-6200	10/12/21
CHECKED BY			
APPROVED BY			
FOREMAN #1			
FOREMAN #2			
MAPPING			

REV#	DATE	BY	DESCRIPTION
3			
2			
1			
COUNTY	PIERCE	Emer Sect	Gas Wk Ctr POWER WK CTR
		N/A	QSWPRE
1/4 SEC	T20N-R04E-26S	OP MAP	PLAT MAP
		N/A	N/A
U-MAP NO (POWER)	2004E099/104	OH CKT MAP	2004E100
		UG CKT MAP	N/A
		CIRCUIT NO	GAR-16

**JOINT FACILITIES ARRANGEMENTS**

UTILITIES	CONTACT	PHONE#		
	N/A	N/A	N/A	N/A
	N/A	N/A	N/A	N/A
	N/A	N/A	N/A	N/A



**ENGR1 LUMEN TK#4859471**  
RETENTION SEC  
3303 8TH AVE SE, PUYALLUP, WA 98372

DESIGNED BY POTELCO

INCIDENT N/A	MAOP N/A
Gas Order N/A	Elect Order 186060873
SCALE AS NOTED	PAGE 1/1