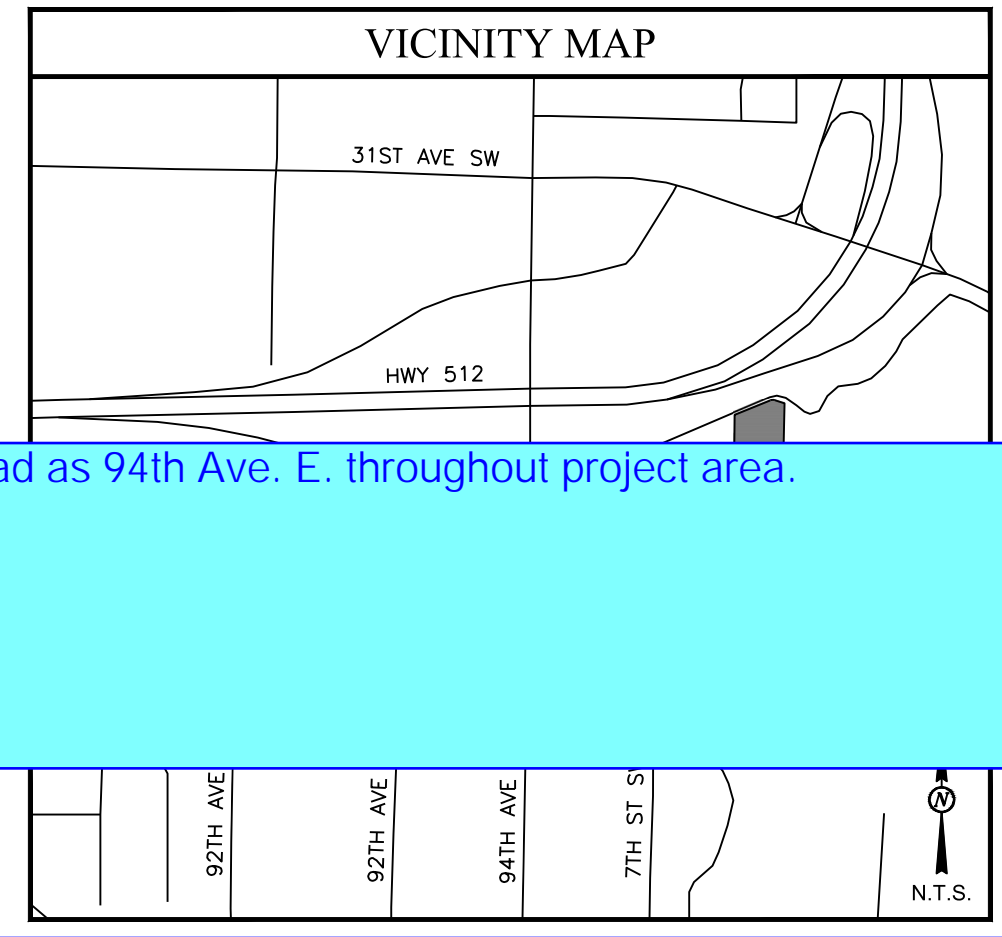


CALL BEFORE YOU DIG
ONE CALL - WASHINGTON
1-800-424-5555 or 811

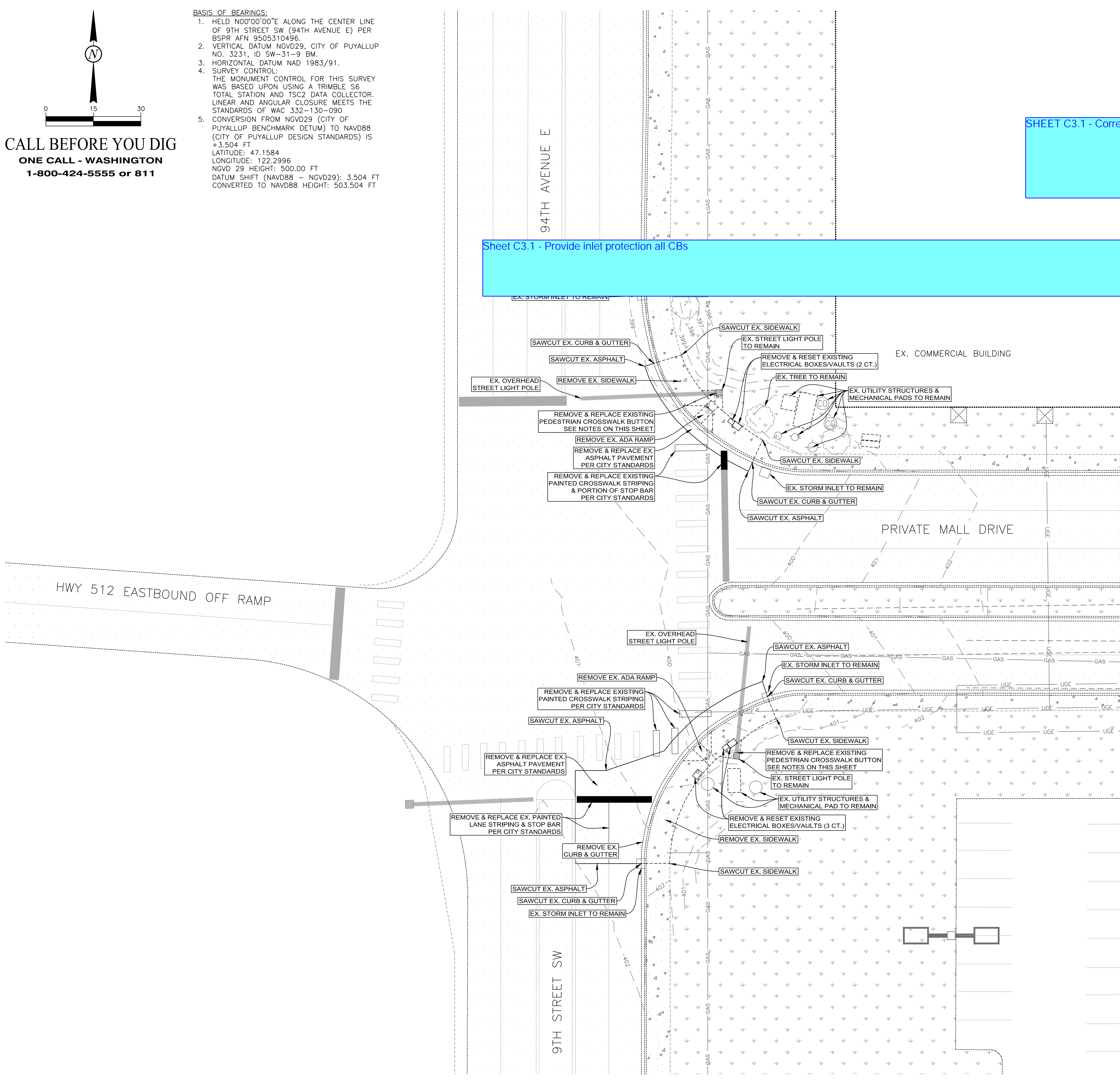
- BASIS OF BEARINGS:**
1. HELD N00°00'00"E ALONG THE CENTER LINE OF 9TH STREET SW (94TH AVENUE E) PER BSPR AFN 9505310496.
 2. VERTICAL DATUM NGVD29, CITY OF PUYALLUP NO. 3231, ID SW-31-9 BM.
 3. HORIZONTAL DATUM NAD 1983/91.
 4. SURVEY CONTROL: THE MONUMENT CONTROL FOR THIS SURVEY WAS BASED UPON USING A TRIMBLE S6 TOTAL STATION AND TSC2 DATA COLLECTOR. LINEAR AND ANGULAR CLOSURE MEETS THE STANDARDS OF WAC 332-130-090
 5. CONVERSION FROM NGVD29 (CITY OF PUYALLUP BENCHMARK DETUM) TO NAVD88 (CITY OF PUYALLUP DESIGN STANDARDS) IS +3.504 FT
 LATITUDE: 47.1584
 LONGITUDE: 122.2996
 NGVD 29 HEIGHT: 500.00 FT
 DATUM SHIFT (NAVD88 - NGVD29): 3.504 FT
 CONVERTED TO NAVD88 HEIGHT: 503.504 FT



LOWRY
 ENGINEERING
 50 NORTH DAKOTA 98103

SHEET C3.1 - Correct vicinity map to label road as 94th Ave. E. throughout project area.

Sheet C3.1 - Provide inlet protection all CBs



REMOVE EX. CONCRETE SIDEWALK	68	SY
REMOVE EX. ADA RAMP	2	EA
REMOVE EX. ASPHALT PAVEMENT	121	SY
REMOVE EX. CURB & GUTTER	114	LF
REMOVE EX. ELECTRICAL JUNCTION BOX	5	EA
REMOVE EX. PAINTED LANE STRIPING	20	LF
REMOVE EX. PAINTED CROSSWALK STRIPING	72	SF
REMOVE EX. PAINTED STOP BAR STRIPING	60	SF

- DEMOLITION NOTES:**
1. CONCRETE CURB AND GUTTER TO BE REMOVED SHALL BE SAW CUT IN FULL SECTIONS AND INSTALLED PER CITY OF PUYALLUP STANDARD CONSTRUCTION DETAIL NO. 01.02.10.
 2. CONTRACTOR SHALL SAW CUT EXISTING PAVEMENT FOR REMOVAL. PAVEMENT SHALL BE REMOVED IN FULL SECTIONS.
 3. QUANTITIES SHOWN AS ESTIMATES ONLY. THE CONTRACTOR SHALL FIELD VERIFY ALL QUANTITIES. THE CONTRACTOR SHALL BE AWARE THAT THE SURFACE OF THE SITE CONTAINS VARIOUS HARD SURFACES AND ITEMS THAT ARE DIFFICULT TO SPECIFICALLY QUANTIFY.
 4. IF ANY PAVEMENT THAT IS NOT SUPPOSED TO BE REMOVED IS DAMAGED DURING CONSTRUCTION, THE CONTRACTOR SHALL SAW CUT AND PATCH THE PAVEMENT AT OWN EXPENSE.
 5. LIMITS OF STREET PATCHING AND PATCHING REQUIREMENTS SHALL BE VERIFIED WITH THE CITY OF PUYALLUP.
 6. CONTRACTOR RESPONSIBLE FOR DISPOSING ALL WASTE MATERIALS OFFSITE IN ACCORDANCE WITH LOCAL, STATE, AND FEDERAL LAWS. THIS INCLUDES BUT IS NOT LIMITED TO WASTE GENERATED FROM DEMOLITION AND REMOVALS, ORGANIC MATTER, METAL, ASPHALT, CONCRETE, AGGREGATE, ETC.
 7. CONTRACTOR TO COORDINATE REMOVAL AND RESETTING OF EXISTING ELECTRICAL LIGHT POLE BOXES/SERVICES WITH THE CITY OF PUYALLUP ENGINEERING DEPARTMENT.
 8. CONTRACTOR TO COORDINATE REMOVAL OF EXISTING PEDESTRIAN CROSSWALK BUTTONS, FIXED TO EXISTING LIGHT POLE BASES, AND ASSOCIATED ELECTRICAL WIRING WITH THE CITY OF PUYALLUP ENGINEERING DEPARTMENT. AFTER REMOVED, CONTRACTOR SHALL CAP OFF REMAINING HOLES WITH GALVANIZED MATERIAL TO MATCH EXISTING LIGHT POLE BASES, PER CITY STANDARDS.
 9. CONTRACTOR SHALL PROVIDE TRAFFIC CONTROL AS REQUIRED ALONG AND/OR WITHIN ADJACENT ROADWAYS DURING EXCAVATION.
 10. TOPOGRAPHIC SURVEY WAS CONDUCTED BY TRUE POINT SURVEYING IN SEPTEMBER, 2020.

REVISIONS

07-15-21 - CITY COMMENTS	
--------------------------	--

HOMWOOD SUITES
3500 S. MERIDIAN
SOUTH HILL MALL
PUYALLUP, WA 98373

LE JOB #	18009.1
PROJECT DATE:	07/13/2021
CHECKED BY:	JML
DRAWN BY:	DMM
APPROVED BY:	JML
SHEET:	5 OF 23

APPROVED
 BY: CITY OF PUYALLUP
 ENGINEERING SERVICES
 DATE: _____
 NOTE: THIS APPROVAL IS VOID AFTER 1 YEAR FROM APPROVAL DATE.
 THE CITY WILL NOT BE RESPONSIBLE FOR ERRORS AND/OR OMISSIONS ON THESE PLANS.
 FIELD CONDITIONS MAY DICTATE CHANGES TO THE PLANS AS DETERMINED BY THE ENGINEERING SERVICES MANAGER.

CITY COMMENTS - 07-13-21
 • ADDED PLAN SHEET FOR THE ADA RAMP IMPROVEMENTS PIECE

OFFSITE ADA RAMP IMPROVEMENTS DEMOLITION PLAN
C-3.1

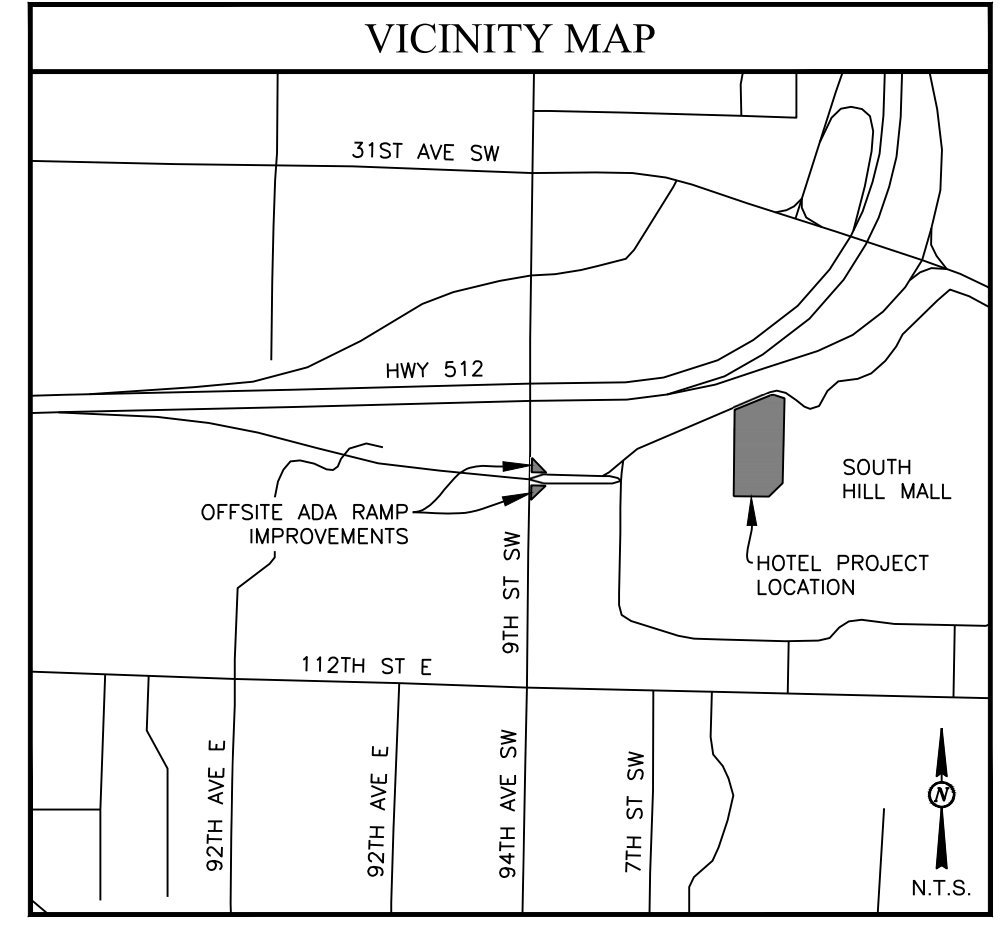
07/13/21 09:04:50AM Z:\Lowry Shared Files\Projects_2018\18009.1 - Puyallup, WA\Drawings\18009.1 - Project\Design\18009.1 - C.dwg



CALL BEFORE YOU DIG
ONE CALL - WASHINGTON
1-800-424-5555 or 811


- BASIS OF BEARINGS:**
1. HELD 00°00'00"E ALONG THE CENTER LINE OF 9TH STREET SW (94TH AVENUE E) PER BSPR AFN 9505310496.
 2. VERTICAL DATUM NGVD29, CITY OF PUYALLUP NO. 3231, ID SW-31-9 BM.
 3. HORIZONTAL DATUM NAD 1983/91.
 4. SURVEY CONTROL: THE MONUMENT CONTROL FOR THIS SURVEY WAS BASED UPON USING A TRIMBLE S6 TOTAL STATION AND TSC2 DATA COLLECTOR. LINEAR AND ANGULAR CLOSURE MEETS THE STANDARDS OF WAC 332-130-090
 5. CONVERSION FROM NGVD29 (CITY OF PUYALLUP BENCHMARK DETUM) TO NAVD88 (CITY OF PUYALLUP DESIGN STANDARDS) IS +3.504 FT
 LATITUDE: 47.1584
 LONGITUDE: 122.2996
 NGVD 29 HEIGHT: 500.00 FT
 DATUM SHIFT (NAVD88 - NGVD29): 3.504 FT
 CONVERTED TO NAVD88 HEIGHT: 503.504 FT

===	NEW CURB (IN-FLOW)
---	NEW CURB (OUT-FLOW)
FFE	FINISHED FLOOR ELEVATION
FG	FINISH GROUND
FL	FLOWLINE
HP	HIGH POINT
INV	STRUCTURE INVERT ELEVATION
LP	LOW POINT
ME	MATCH EXISTING GROUND
RIM	STRUCTURE RIM ELEVATION
TC	TOP OF CURB
TOC	TOP OF CONCRETE
TW	TOP OF WALK

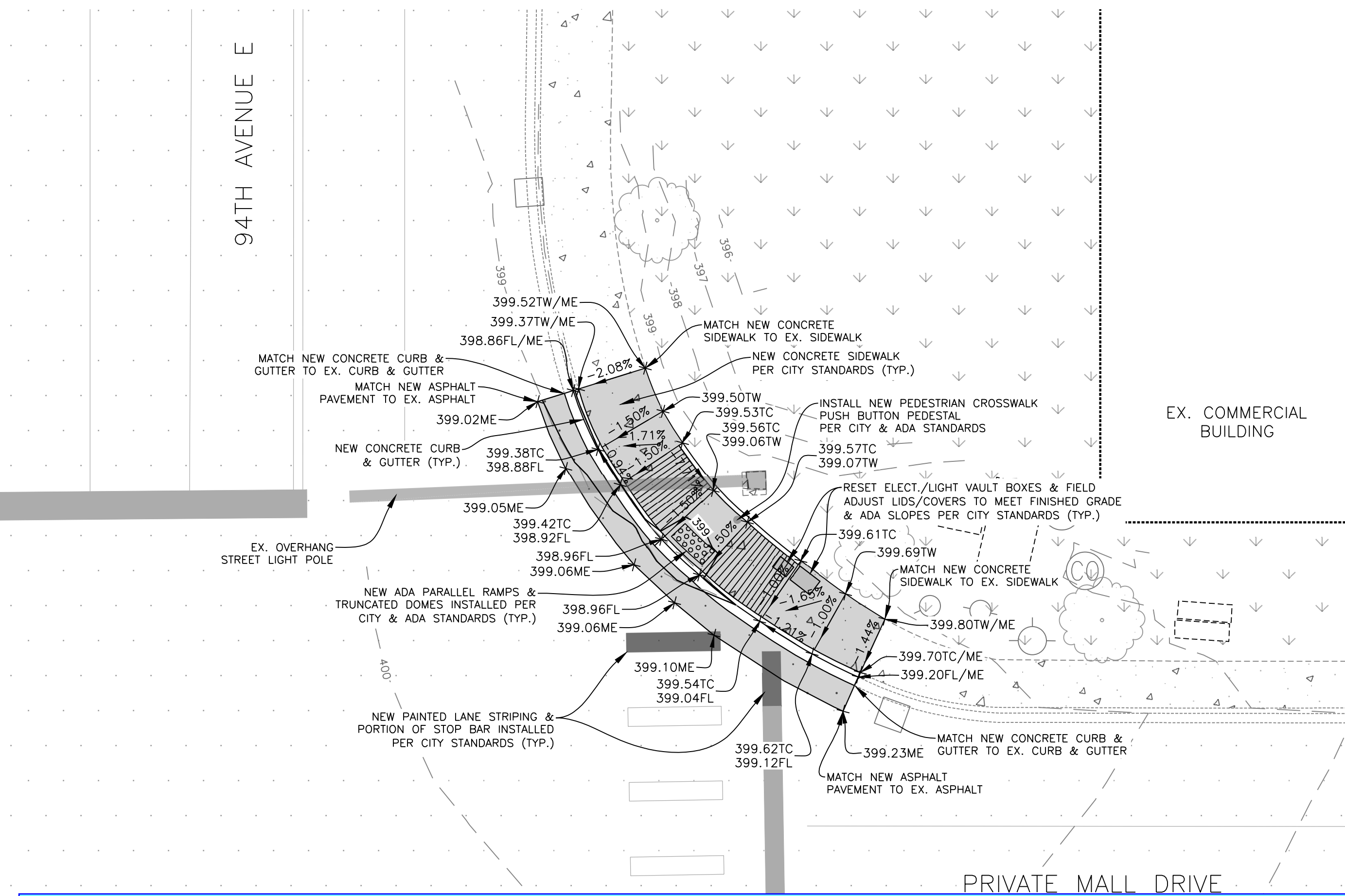


OFFSITE ESTIMATED GRADING QUANTITIES		
ITEM	QUANTITY	UNIT
AGGREGATE BASE COURSE	43	CY
24" CURB & GUTTER	114	LF
NEW 4" CONCRETE SIDEWALK	84	SY
NEW 4" ASPHALT PAVEMENT	121	SY
ADA DOME PANELS	17	SF
CROSSWALK PUSH BUTTON PEDESTAL	2	EA
NEW PAINTED LANE STRIPING	20	LF
NEW PAINTED CROSSWALK STRIPING	72	SF
NEW PAINTED STOP BAR STRIPING	60	SF

NOTES:
 1. ELEVATIONS ARE FLOWLINE ELEVATIONS UNLESS OTHERWISE NOTED.
 2. NO COMPACTION WAS ASSUMED IN THE QUANTITY FOR AGGREGATE

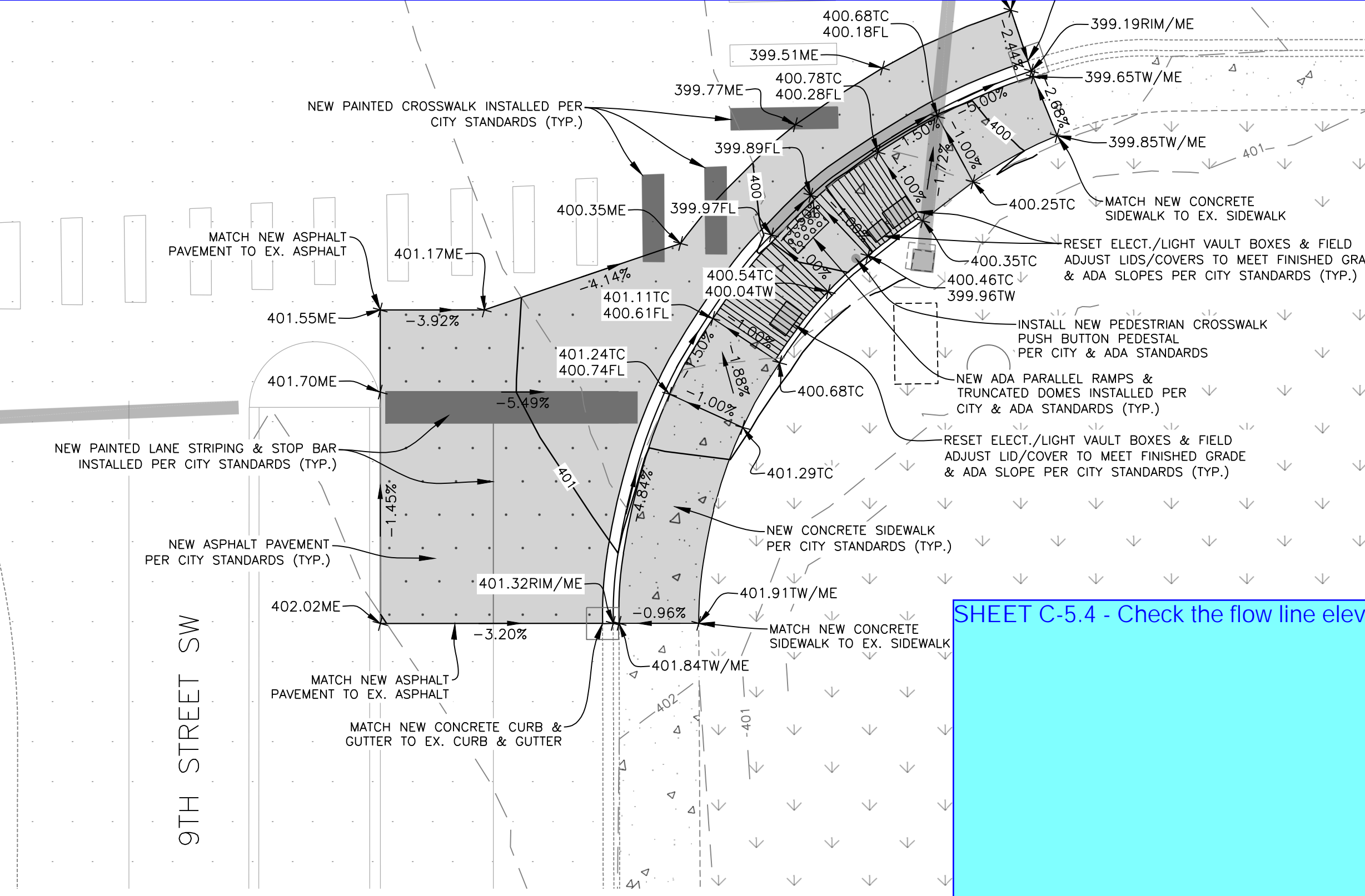


LOWRY
 ENGINEERING
 1111 WESTRAC DRIVE - SUITE 108
 FARGO, NORTH DAKOTA 58103



SHEET C5.4 - On the southeast corner of the intersection, the intent of the design between the landing and the north match existing joint is unclear as to which of the three sections is ramp and which of the three are sidewalk. The curb and gutter top elevations are at 399.10ME, 399.54TC, 399.04FL, 399.52TW/ME, 399.37TW/ME, 399.50TW, 399.53TC, 399.56TC, 399.06TW, 399.57TC, 399.07TW, 399.61TC, 399.69TW, 399.80TW/ME, 399.70TC/ME, 399.20FL/ME, 399.62TC, 399.12FL, 399.23ME. The curb and gutter top elevations are at 399.10ME, 399.54TC, 399.04FL, 399.52TW/ME, 399.37TW/ME, 399.50TW, 399.53TC, 399.56TC, 399.06TW, 399.57TC, 399.07TW, 399.61TC, 399.69TW, 399.80TW/ME, 399.70TC/ME, 399.20FL/ME, 399.62TC, 399.12FL, 399.23ME. The curb and gutter top elevations are at 399.10ME, 399.54TC, 399.04FL, 399.52TW/ME, 399.37TW/ME, 399.50TW, 399.53TC, 399.56TC, 399.06TW, 399.57TC, 399.07TW, 399.61TC, 399.69TW, 399.80TW/ME, 399.70TC/ME, 399.20FL/ME, 399.62TC, 399.12FL, 399.23ME.

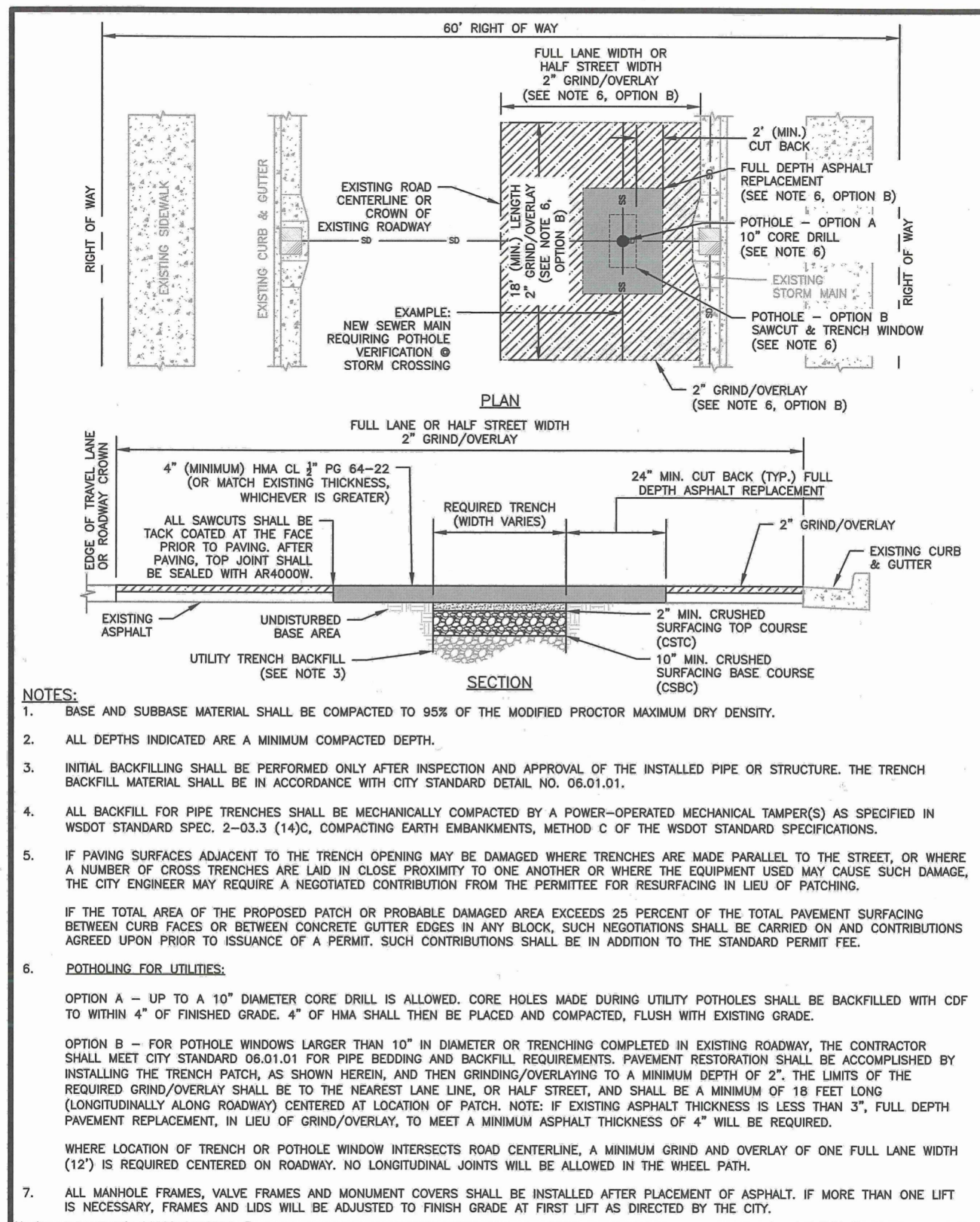
SHEET C-5.4 - 3 of 4 ramps do not include running slopes. Provide conforming slopes for all ramps.



SHEET C5.4 - The elevation shown on the southeast corner of the intersection for the back of sidewalk TC at the north end of the ramp is 399.65TW/ME. The elevation shown on the southeast corner of the intersection for the back of sidewalk TC at the south end of the ramp is 399.85TW/ME. The elevation shown on the southeast corner of the intersection for the back of sidewalk TC at the north end of the ramp is 399.65TW/ME. The elevation shown on the southeast corner of the intersection for the back of sidewalk TC at the south end of the ramp is 399.85TW/ME.

SHEET C5.4 - The elevation shown on the southeast corner of the intersection for the back of sidewalk TC at the south end of the ramp is 399.85TW/ME. The elevation shown on the southeast corner of the intersection for the back of sidewalk TC at the north end of the ramp is 399.65TW/ME. The elevation shown on the southeast corner of the intersection for the back of sidewalk TC at the south end of the ramp is 399.85TW/ME. The elevation shown on the southeast corner of the intersection for the back of sidewalk TC at the north end of the ramp is 399.65TW/ME.

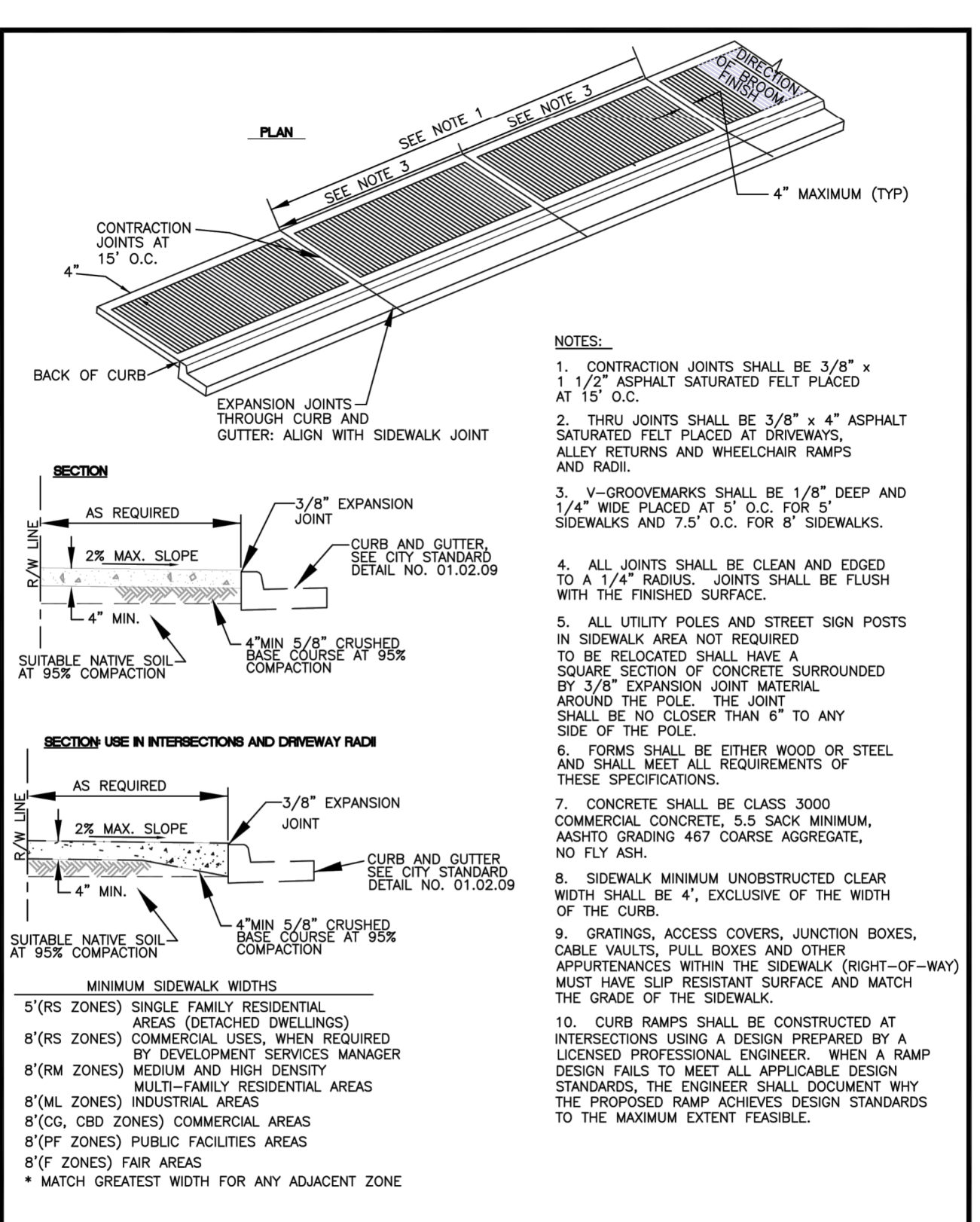
SHEET C-5.4 - Check the flow line elevations at 399.65TW/ME and 399.85TW/ME.



CITY OF PUYALLUP
OFFICE OF THE CITY ENGINEER

STREET PATCH

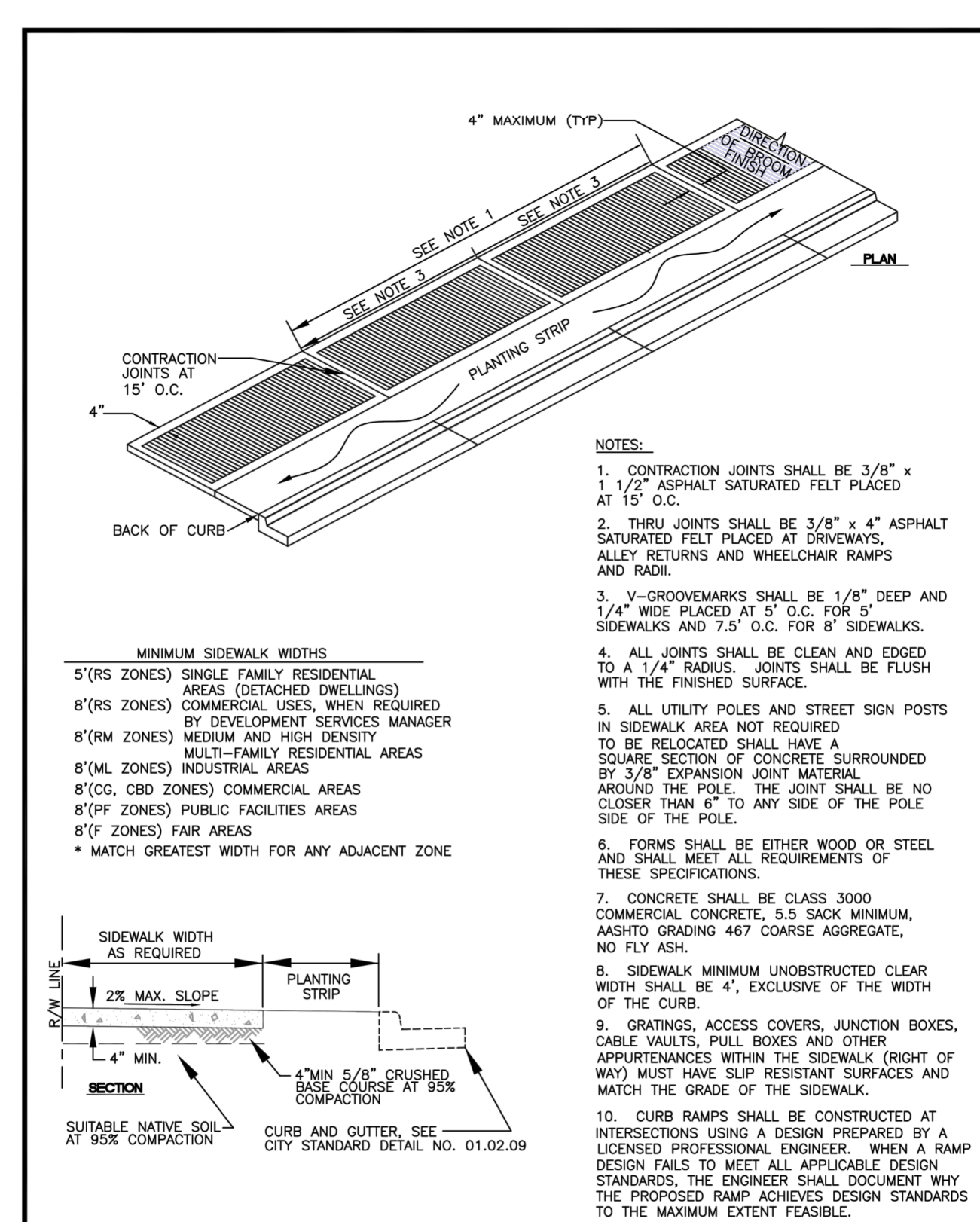
APPROVED FOR PUBLICATION: 01.01.20
CITY STANDARD: 01.01.20



CITY OF PUYALLUP
DEVELOPMENT ENGINEERING and PUBLIC WORKS DEPARTMENTS

SIDEWALK WITHOUT PLANTING STRIP

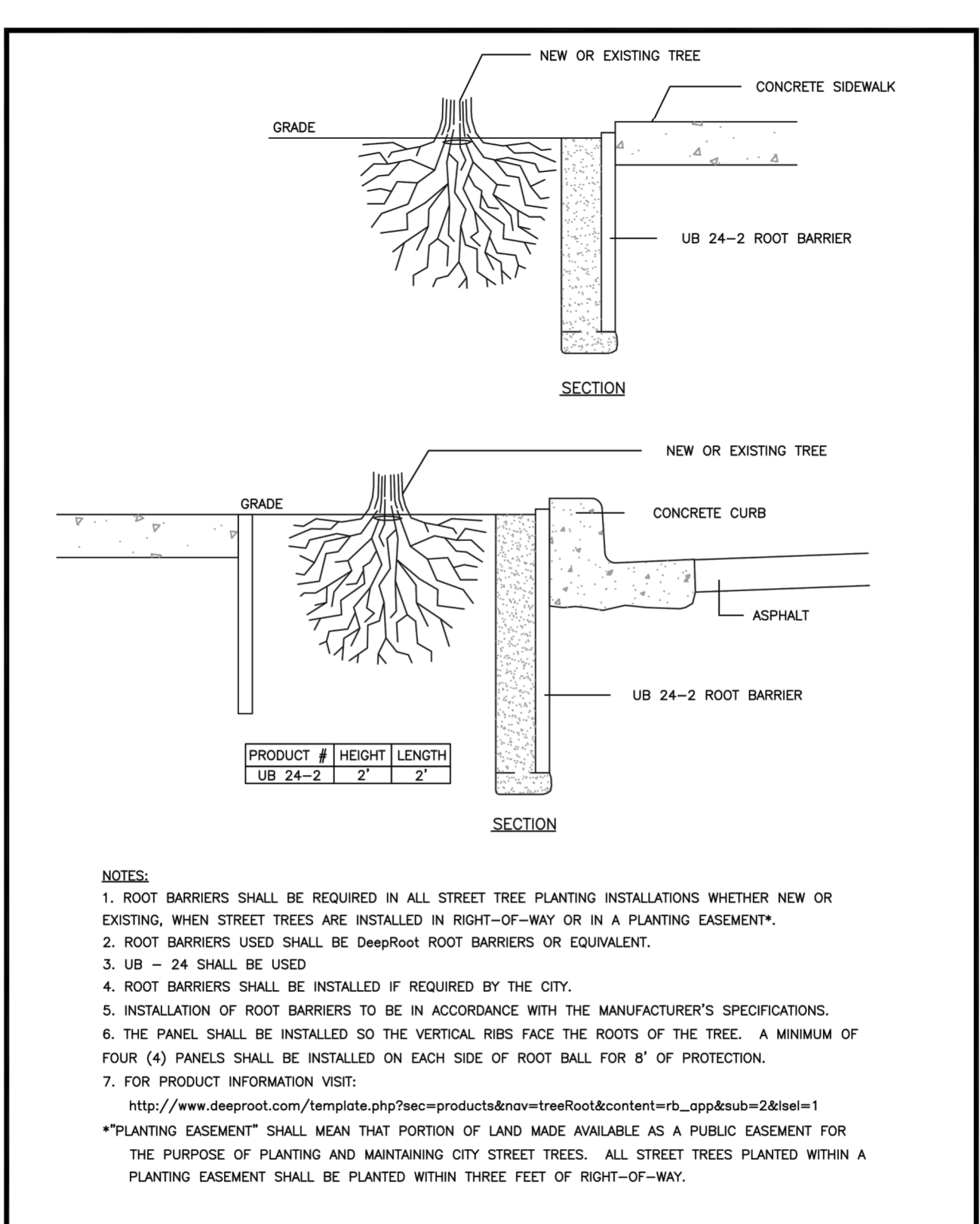
APPROVED FOR PUBLICATION: 01.02.01
CITY STANDARD: 01.02.01



CITY OF PUYALLUP
DEVELOPMENT ENGINEERING and PUBLIC WORKS DEPARTMENTS

SIDEWALK WITH PLANTING STRIP

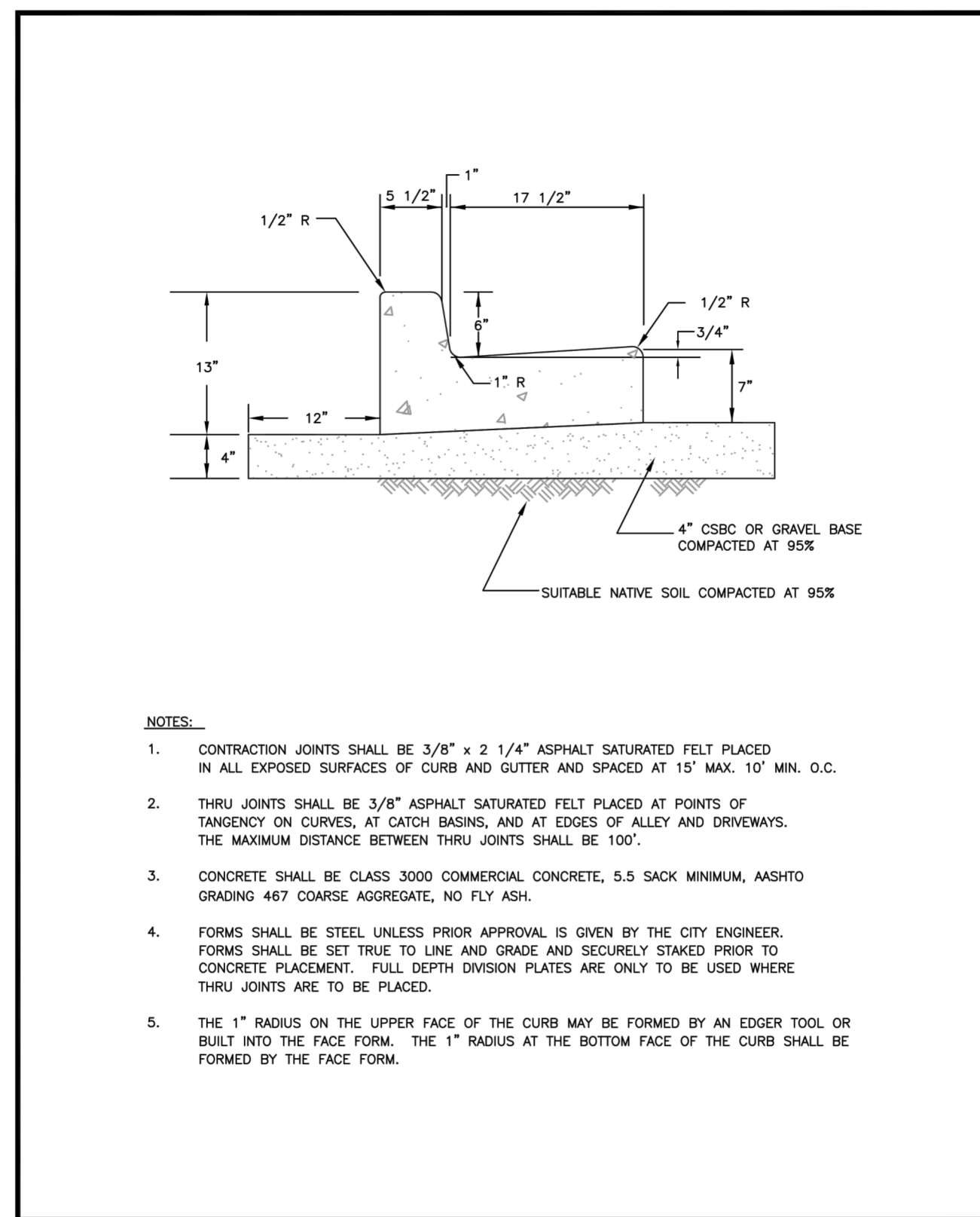
APPROVED FOR PUBLICATION: 01.02.02
CITY STANDARD: 01.02.02



CITY OF PUYALLUP
DEVELOPMENT ENGINEERING and PUBLIC WORKS DEPARTMENTS

ROOT BARRIER DETAIL

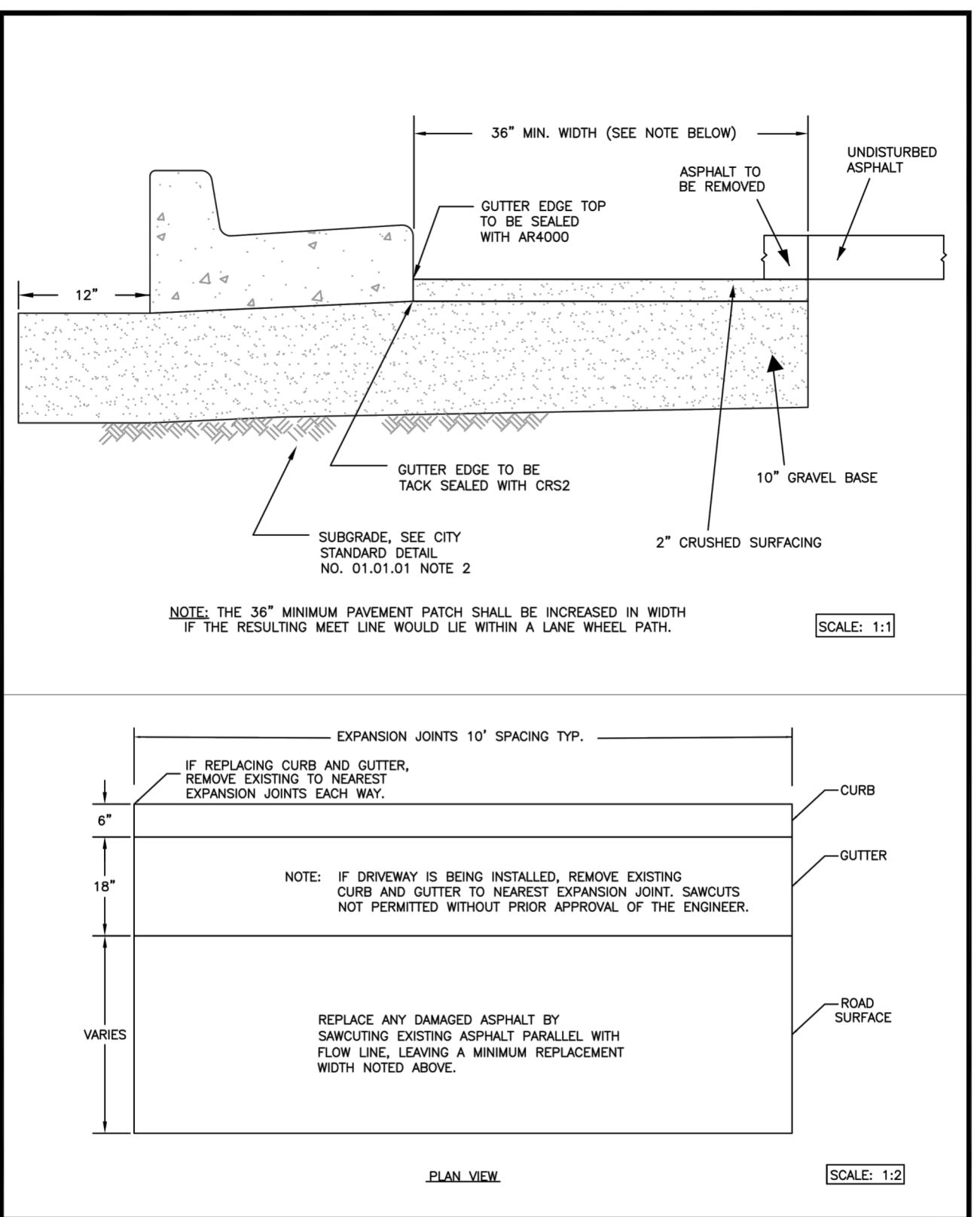
APPROVED FOR PUBLICATION: 01.02.03
CITY STANDARD: 01.02.03



CITY OF PUYALLUP
DEVELOPMENT ENGINEERING and PUBLIC WORKS DEPARTMENTS

CURB AND GUTTER

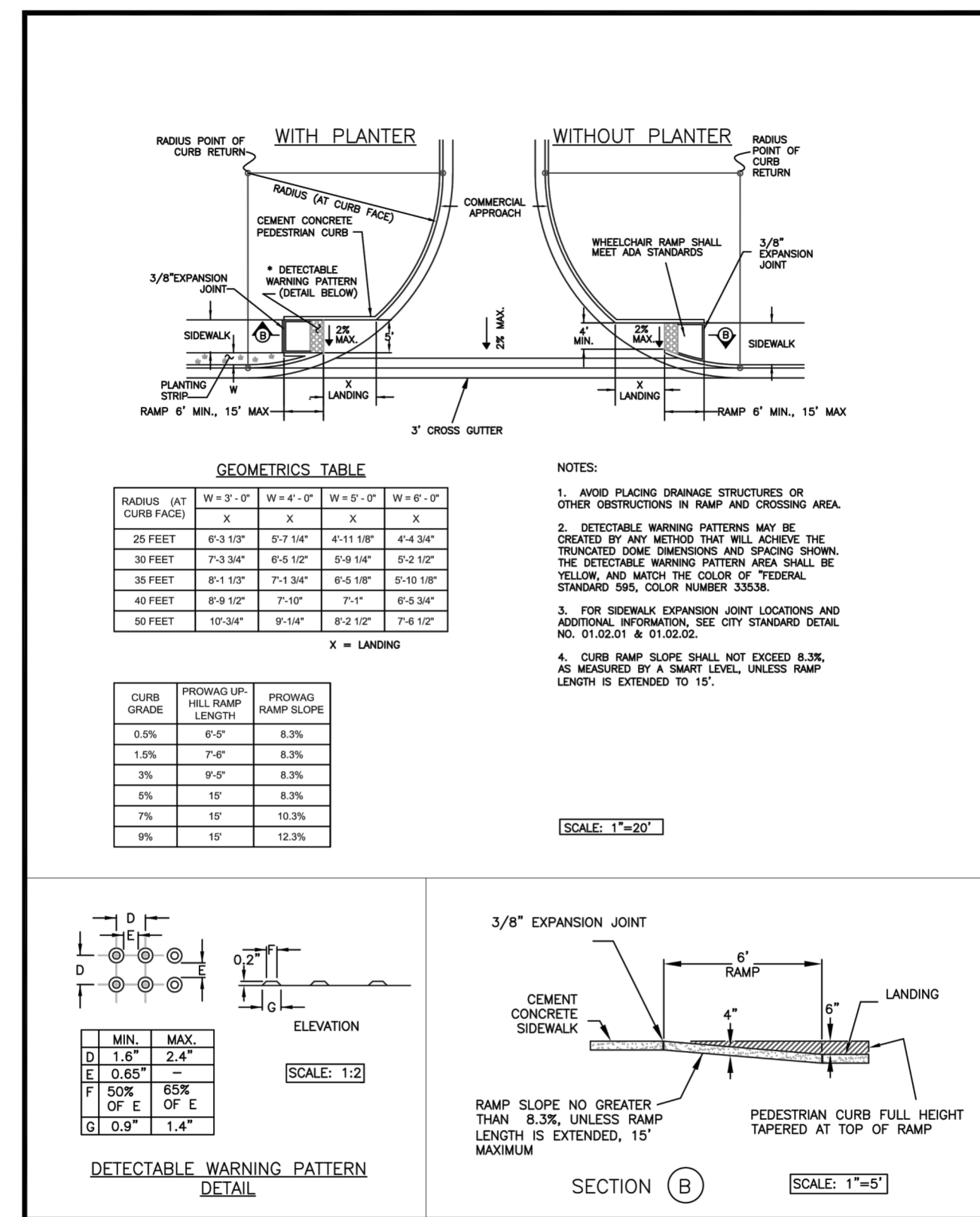
APPROVED FOR PUBLICATION: 01.02.09
CITY STANDARD: 01.02.09



CITY OF PUYALLUP
DEVELOPMENT ENGINEERING and PUBLIC WORKS DEPARTMENTS

CURB CUT

APPROVED FOR PUBLICATION: 01.02.10
CITY STANDARD: 01.02.10



CITY OF PUYALLUP
DEVELOPMENT ENGINEERING and PUBLIC WORKS DEPARTMENTS

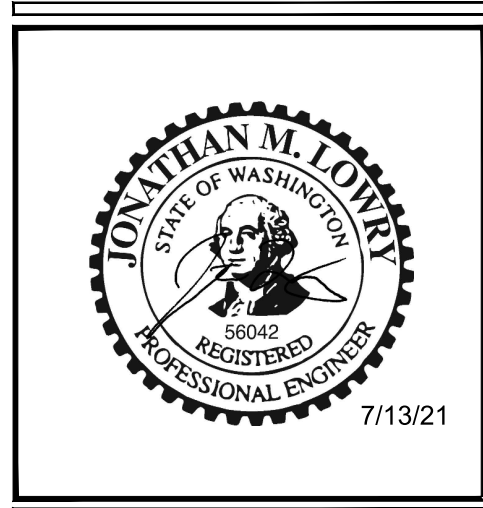
SIDEWALK RAMP WITH COMMERCIAL APPROACHES

APPROVED FOR PUBLICATION: 01.02.19
CITY STANDARD: 01.02.19

REVISIONS

NO.	DATE	DESCRIPTION
07-15-21		CITY COMMENTS

HOMWOOD SUITES
3500 S. MERIDIAN
SOUTH HILL MALL
PUYALLUP, WA 98373



LE JOB # 18009.1
PROJECT DATE: 07/13/2021
CHECKED BY: JML
DRAWN BY: DMM
APPROVED BY: JML
SHEET: 16 OF 23

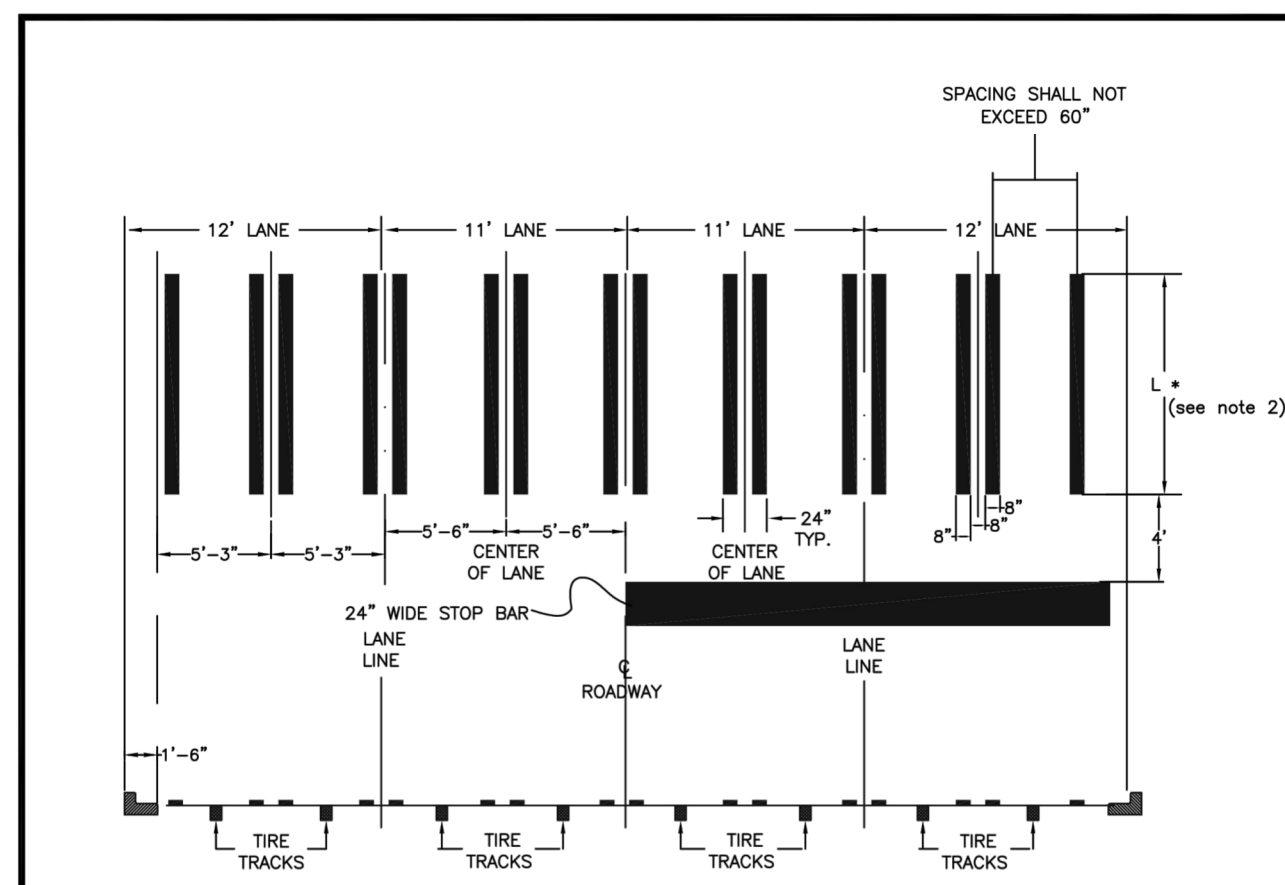
GENERAL DETAILS

C-7

CITY COMMENTS - 07-13-21
ADDED CoP APPROVAL STAMP

APPROVED
BY: _____
CITY OF PUYALLUP
ENGINEERING SERVICES
DATE: _____
NOTE: THIS APPROVAL IS VOID AFTER 1 YEAR FROM APPROVAL DATE.
THE CITY WILL NOT BE RESPONSIBLE FOR ERRORS AND/OR OMISSIONS ON THESE PLANS.
FIELD CONDITIONS MAY DICTATE CHANGES TO THE PLANS AS DETERMINED BY THE ENGINEERING SERVICES MANAGER.

07/15/21 09:06:52AM Z:\Lowry Shared Files\Projects - 2018\18009.1 - Puyallup, WA\Drawings\18009.1 - C - Notes & Details.dwg

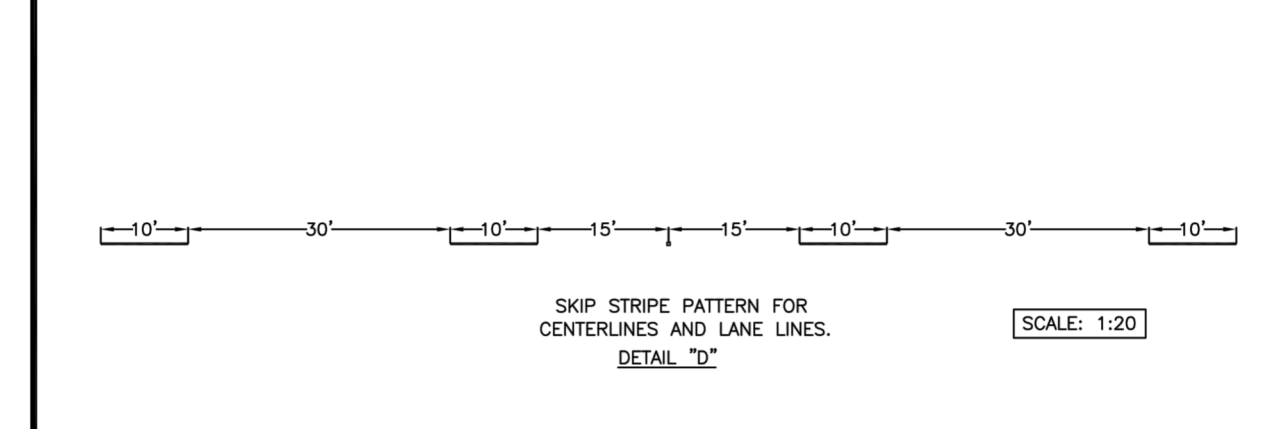
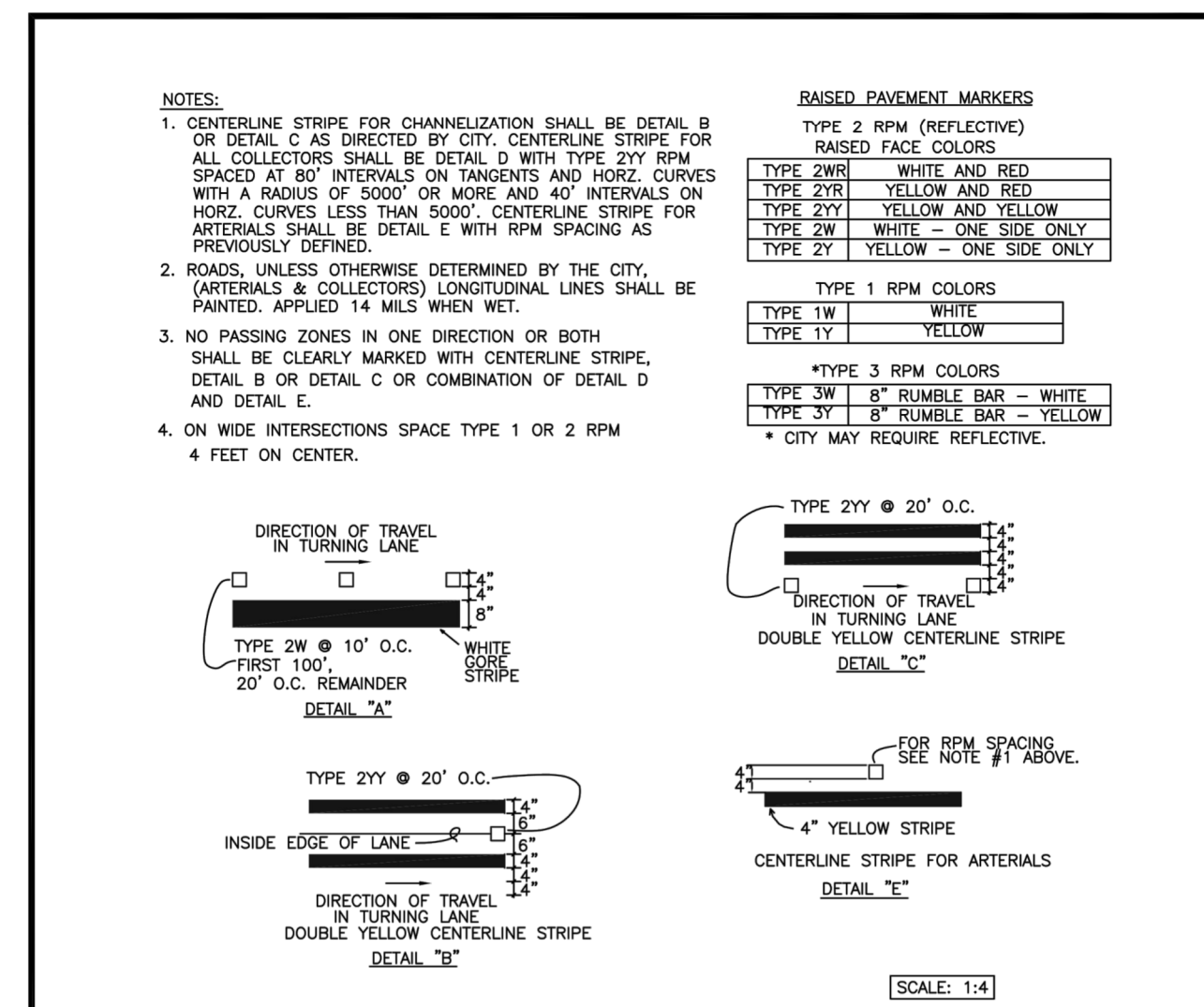


- NOTES:**
- FOR ALL ROADWAYS, THE LONGITUDINAL LINES SHALL BE CENTERED ON THE LANE LINES AND IN THE CENTER OF THE TRAVELED PORTION OF THE LANE TO MINIMIZE TIRE WEAR. THE SPACING BETWEEN THE LONGITUDINAL LINES SHALL NOT EXCEED 60\".
 - THE LENGTH OF A CROSSWALK SHALL BE 8' ACROSS RESIDENTIAL STREETS, 10' ACROSS COLLECTORS AND MINOR ARTERIALS AND 12' ACROSS PRINCIPAL ARTERIALS. HOWEVER, THE LENGTH OF A CROSSWALK SHALL BE 8' ACROSS SIDE STREETS ALONG COLLECTORS AND MINOR ARTERIALS AND 12' ACROSS SIDE STREETS ALONG PRINCIPAL ARTERIALS.
 - STOP BAR WHEN USED WITH A CROSSWALK SHALL BE PLACED FOUR FEET IN ADVANCE OF AND PARALLEL TO THE CROSSWALK. ALL STOP BARS SHALL BE 24\" WIDE.
 - PAVEMENT MARKINGS, INCLUDING CROSSWALKS, SHALL BE TYPE A LIQUID HOT APPLIED THERMOPLASTIC, PER STANDARD SPECIFICATIONS, SECTION 9-34 PAVEMENT MARKING MATERIAL, 9-34.1 GENERAL.

CITY OF PUYALLUP
DEVELOPMENT ENGINEERING and PUBLIC WORKS DEPARTMENTS

CROSSWALK DETAIL

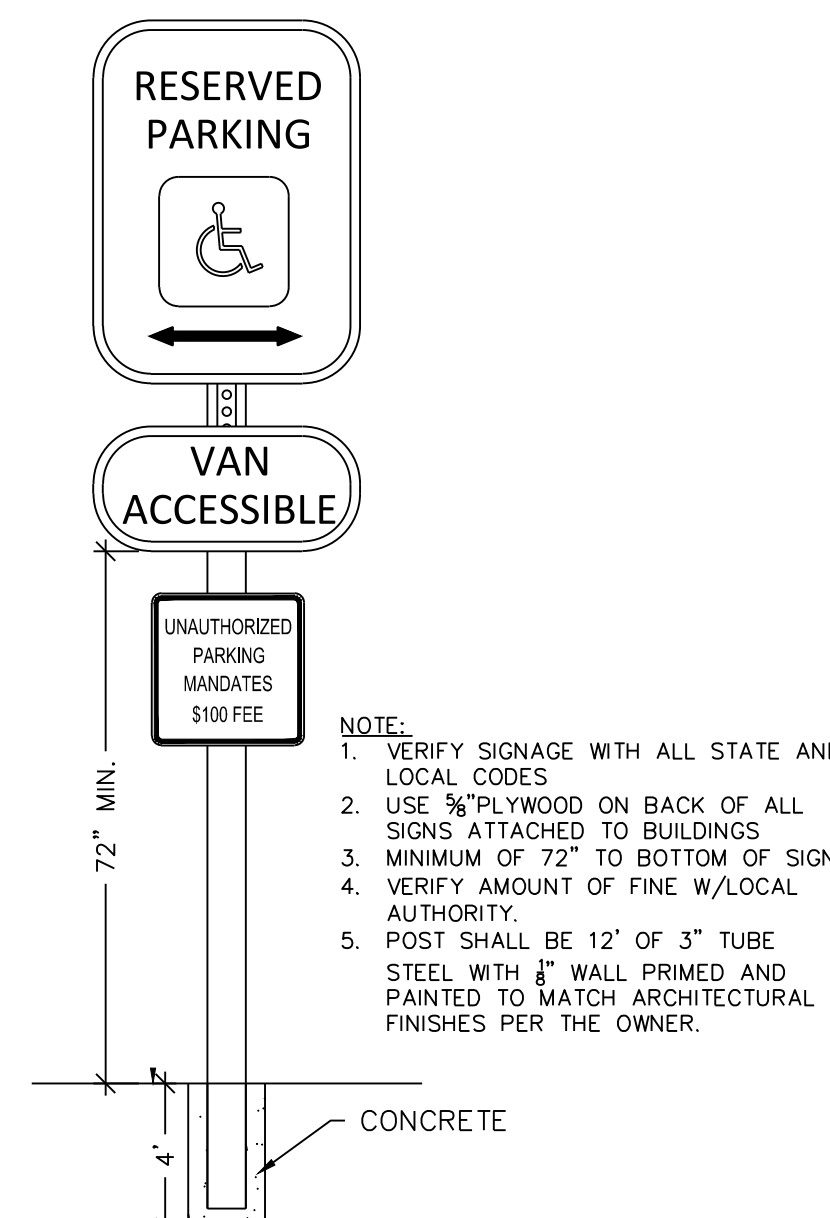
DESIGNED BY JIM DEWOLF/BOVODRA	CHECKED BY LINDA LIAN	APPROVED BY COLLEEN BARBER	DESIGNED BY LINDA LIAN	CITY STANDARD
PROJECT NUMBER F:\PUBLIC\COMMENTS\PROJECT\CROSSWALK STRIP\0103.11	DATE 01/13/2021	DATE 01/13/2021	DATE 01/13/2021	DATE 01.03.11



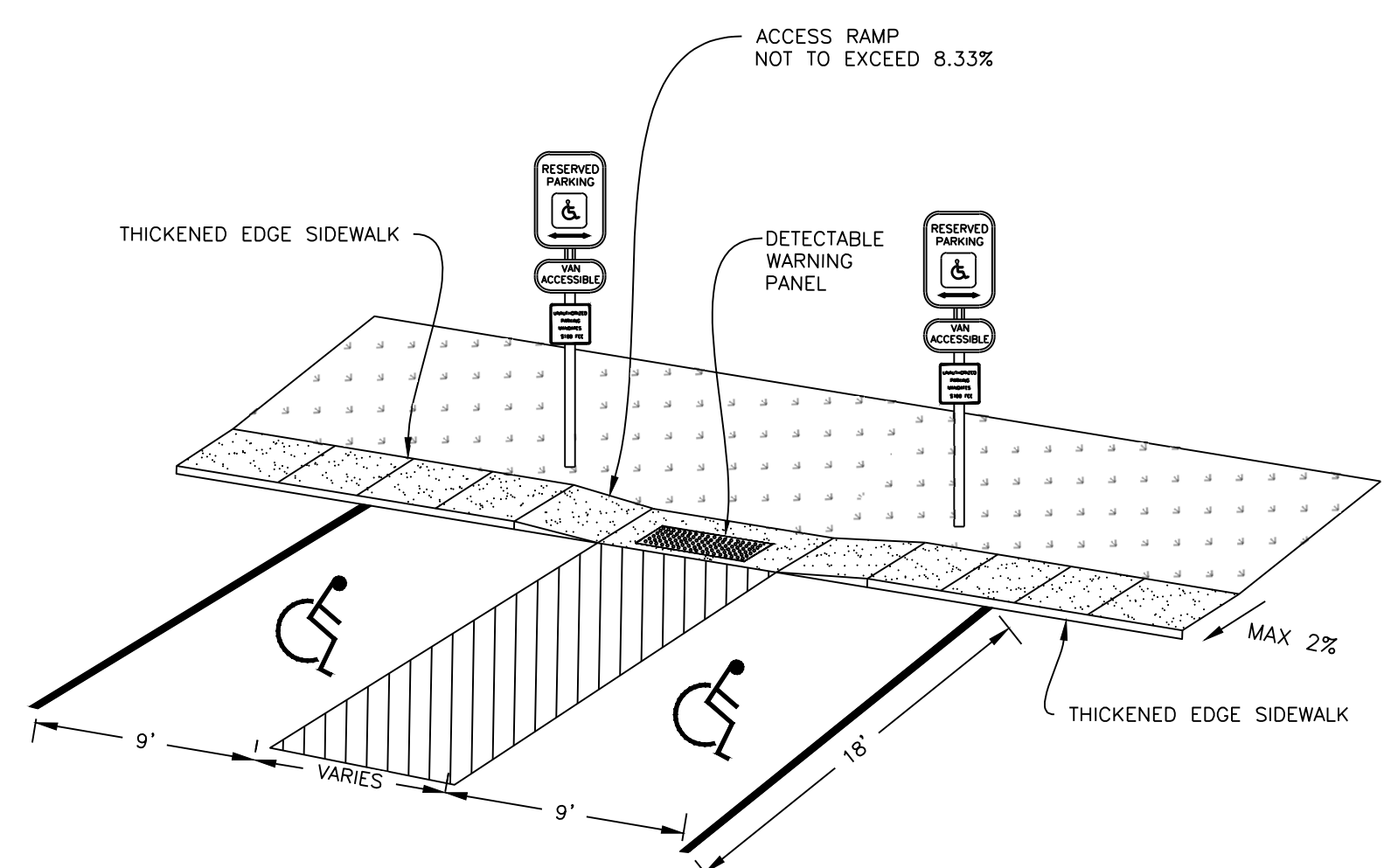
CITY OF PUYALLUP
DEVELOPMENT ENGINEERING and PUBLIC WORKS DEPARTMENTS

PAVEMENT MARKING DETAILS

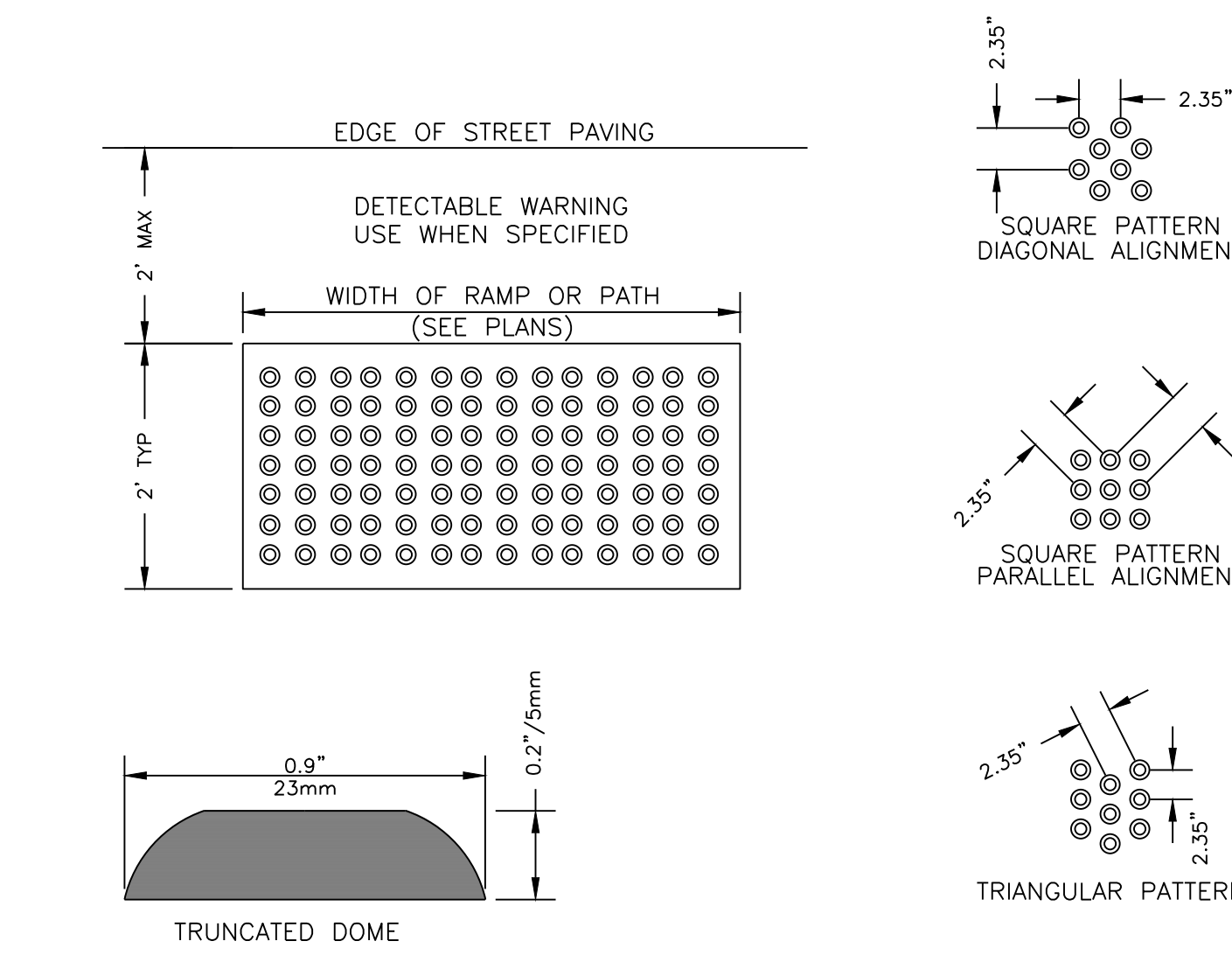
DESIGNED BY JIM DEWOLF/BOVODRA	CHECKED BY LINDA LIAN	APPROVED BY COLLEEN BARBER	DESIGNED BY LINDA LIAN	CITY STANDARD
PROJECT NUMBER F:\PUBLIC\COMMENTS\PROJECT\CROSSWALK STRIP\0103.11	DATE 01/13/2021	DATE 01/13/2021	DATE 01/13/2021	DATE 01.03.10



1 STANDARD ADA PARKING SIGN DETAIL
N.T.S.

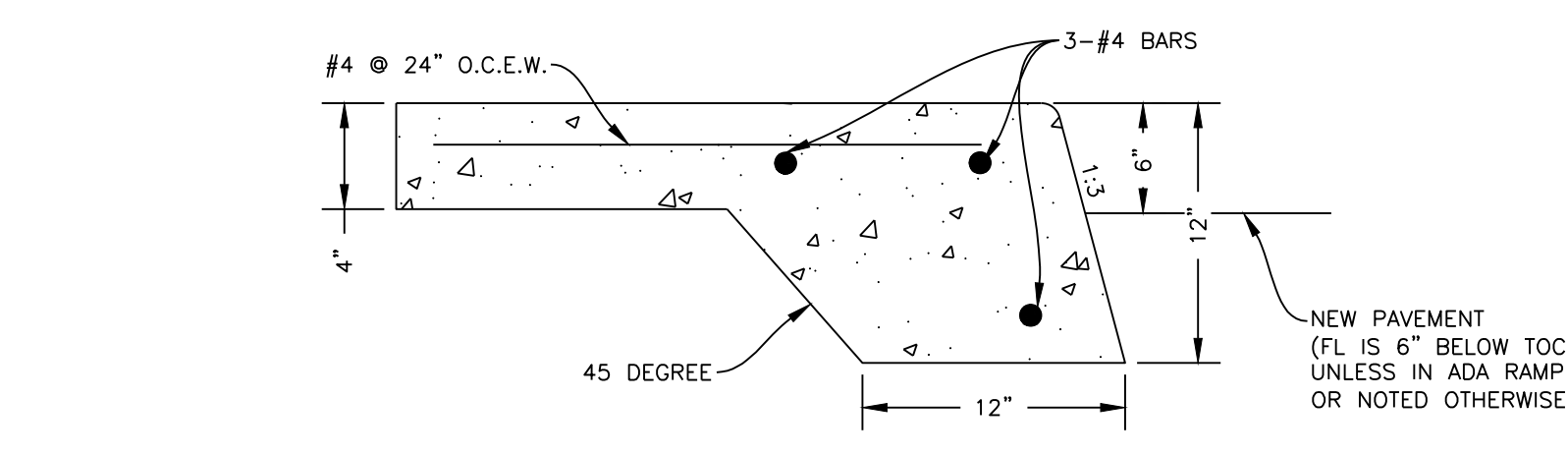


2 ADA RAMP
N.T.S.



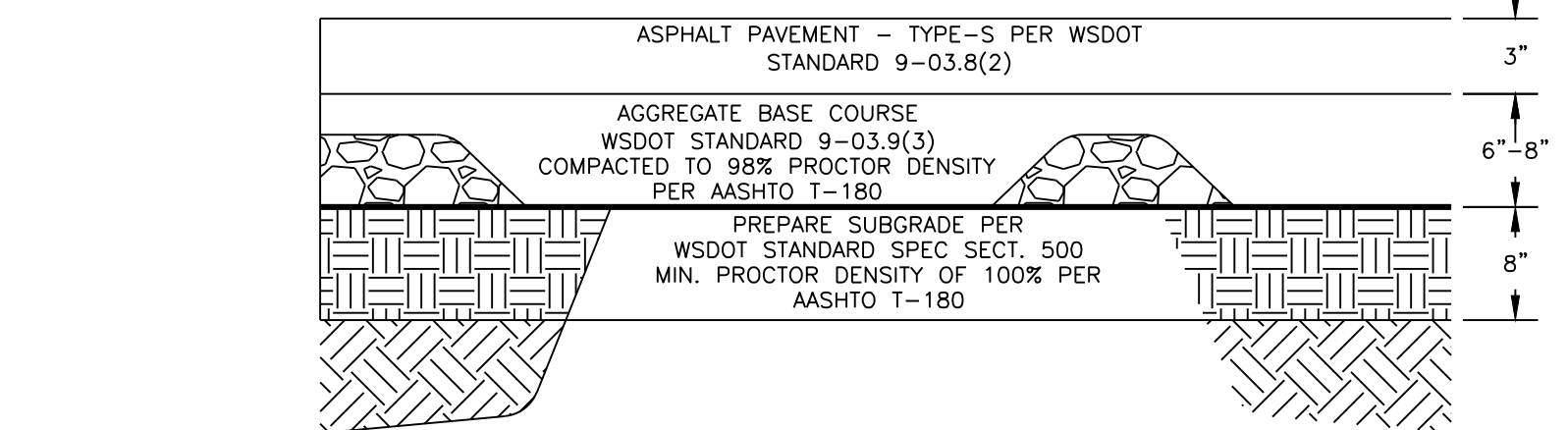
- NOTES:**
- TRUNCATED DOME PANELS SHALL BE RED FIBERGLASS AND CAST IN PLACE OR EQUAL APPROVED IN WRITING BY THE PERMITTING AUTHORITY.
 - THE DETECTABLE WARNING SHALL CONTRAST VISUALLY WITH ADJOINING SURFACES, EITHER LIGHT-ON DARK, OR DARK-ON-LIGHT AND MEET THE CONFIGURATION AND DIMENSION SHOWN (PER ADAAG 4.29.2).

3 TRUNCATED DOME PANELS
N.T.S.



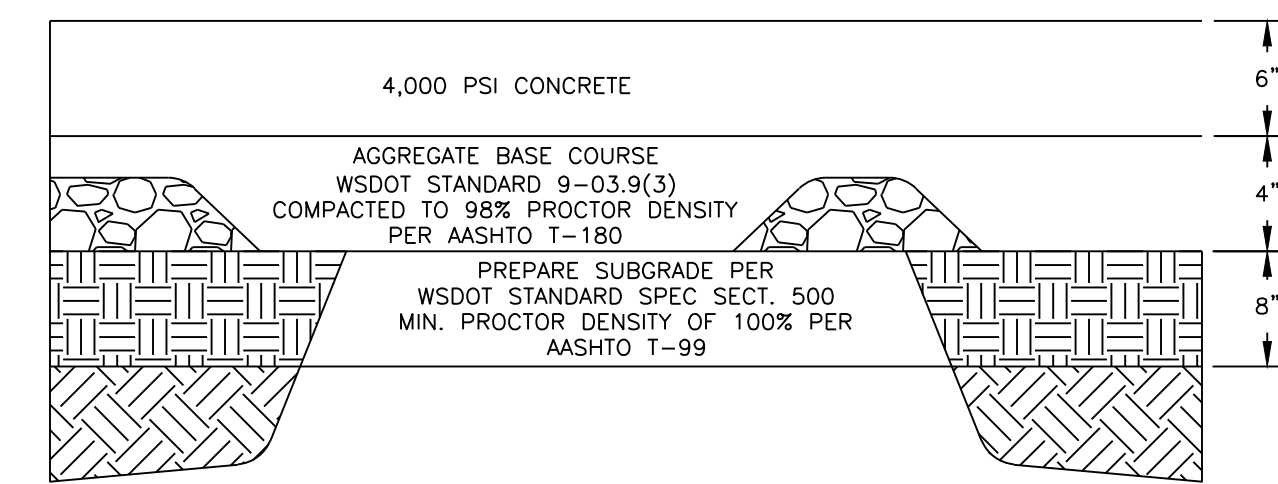
- NOTES:**
- PROVIDE 1/2\" EXPANSION MATERIAL AT EXISTING CONCRETE JOINTS, BUILDINGS & ADJACENT TO CURB AND GUTTER.
 - PROVIDE FULL DEPTH EXPANSION JOINT WITH 1/2\" EXPANSION MATERIAL AT 60\" INTERVALS.
 - SAWCUT 1\" DEEP AT 6\" INTERVALS OR LESS TO APPROXIMATE SQUARE DESIGN.
 - PROVIDE 2-1/2\" SMOOTH DOWELS @ 24\" O.C. AT EXPANSION JOINTS.
 - CONCRETE SHALL BE 4,000 (OR HIGHER) PSI.

4 THICKENED EDGE CONCRETE
N.T.S.



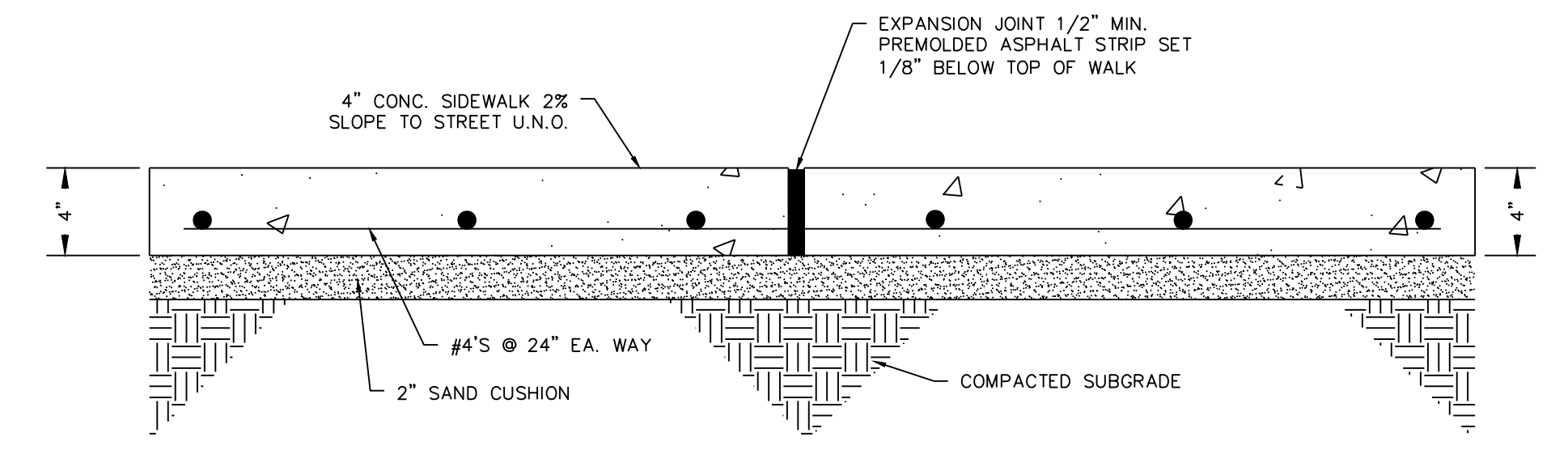
- NOTES:**
- ALL PAVING MATERIALS AND CONSTRUCTION SHALL MEET WSDOT STANDARDS.
 - SITE ENTRY SHALL HAVE AN 8\" AGGREGATE BASE COURSE. ALL REMAINING DRIVES AND PARKING SHALL HAVE A 6\" AGGREGATE BASE COURSE.

6 3\" ASPHALT PAVEMENT
N.T.S.



- NOTES:**
- CONCRETE SHALL BE 4,000 (OR HIGHER) PSI AND PER WSDOT SPECIFICATIONS
 - INSTALL #4 REBAR STEEL REINFORCEMENT AT 24\" ON CENTER EACH WAY THROUGHOUT CONCRETE PAVEMENT
 - REBAR SHALL BE INSTALLED AT MID DEPTH OF CONCRETE AND BE SUPPORTED BY \"REBAR CHAIRS\"
 - CONCRETE SHALL BE SAW CUT TO A DEPTH OF 1.5\" IN A +/-10\" GRID PATTERN
 - CONCRETE SHALL BE TIED TO ALL CURBS AND GUTTER WITH 18\"-#4 SMOOTH DOWEL AT 24\" O.C. ONE END SHALL BE GREASED OR SLIP CAP PROVIDED.
 - ANY ORGANIC SOILS \"BLACK DIRT\" ENCOUNTERED SHALL BE REMOVED FROM BELOW PAVEMENT SECTION UNDER THE DIRECTION OF THE GEOTECHNICAL ENGINEER.

7 6\" CONCRETE PAVEMENT
N.T.S.



- NOTES:**
- SAW CUT 1\" DEEP EXPANSION JOINTS WITH #3 DOWELS 12\" O.C. AT 6\" INTERVALS OR LESS AND PROVIDE 3\" EXPANSION MATERIAL AT ALL CONCRETE WALK INTERSECTIONS, DOOR OPENINGS, BUILDING WALLS, EXISTING CONCRETE JOINTS, & ADJACENT TO CURB AND GUTTER.
 - MAXIMUM GROSS SLOPE 2% FROM BUILDINGS, MAXIMUM LONGITUDINAL SLOPE 5%.
 - CONCRETE SHALL BE 4,000 (OR HIGHER) PSI AND PER CITY OF CONCORD SPECIFICATIONS.

5 4\" CONCRETE SIDEWALK DETAIL
N.T.S.

CITY COMMENTS - 07-13-21
ADDED CoP APPROVAL STAMP

APPROVED

BY: _____
CITY OF PUYALLUP
ENGINEERING SERVICES

DATE: _____

NOTE: THIS APPROVAL IS VOID AFTER 1 YEAR FROM APPROVAL DATE.

THE CITY WILL NOT BE RESPONSIBLE FOR ERRORS AND/OR OMISSIONS ON THESE PLANS.

FIELD CONDITIONS MAY DICTATE CHANGES TO THE PLANS AS DETERMINED BY THE ENGINEERING SERVICES MANAGER.

REVISIONS

07-15-21	CITY COMMENTS
----------	---------------

HOMWOOD SUITES
3500 S. MERIDIAN
SOUTH HILL MALL
PUYALLUP, WA 98373

JONATHAN M. LOWRY
STATE OF WASHINGTON
REGISTERED PROFESSIONAL ENGINEER
56042
7/13/21

LE JOB #	18009.1
PROJECT DATE:	07/13/2021
CHECKED BY:	JML
DRAWN BY:	DMM
APPROVED BY:	JML
SHEET:	17 OF 23

GENERAL DETAILS

C-7.1

07/13/21 09:06:57 AM Z:\Lowry Shared Files\Projects - 2018\18009.1 - Puyallup, WA\Drawings\18009.1 - Project\Design\18009.1_C - Notes & Details.dwg