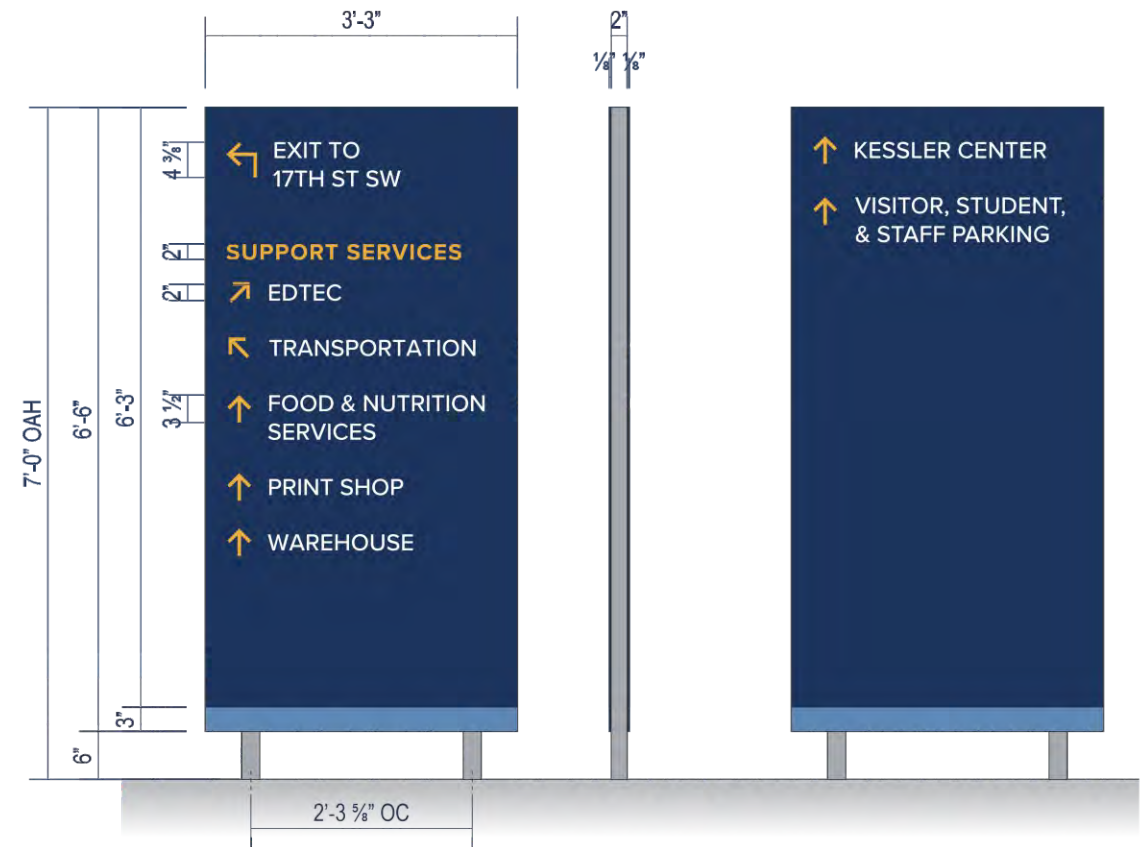


MANUFACTURE & INSTALL : **QUANTITY (2)**

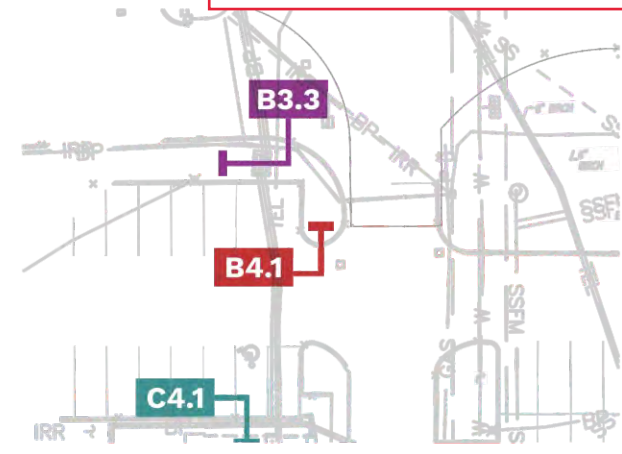
FACES : .125" ALUM. W/ EASED CORNERS PTM PMS 534c DARK BLUE & PMS 646c EVENING BLUE
GRAPHIC HEADER : DIGITALLY PRINTED VINYL APPLIED TO FACE
COPY : 3M 7725-10 WHITE VINYL & 3M 7725-25 SUNFLOWER VINYL
POSTS : 2" SQUARE STEEL
ATTACHMENT : TBD PER SITE SURVEY



B4.1 - NORTH VIEW **PROFILE VIEW** **B4.1 - SOUTH VIEW**

SCALE: 1/2"=1'-0"
QTY (1)

This footing needs to be dug with a vac truck.

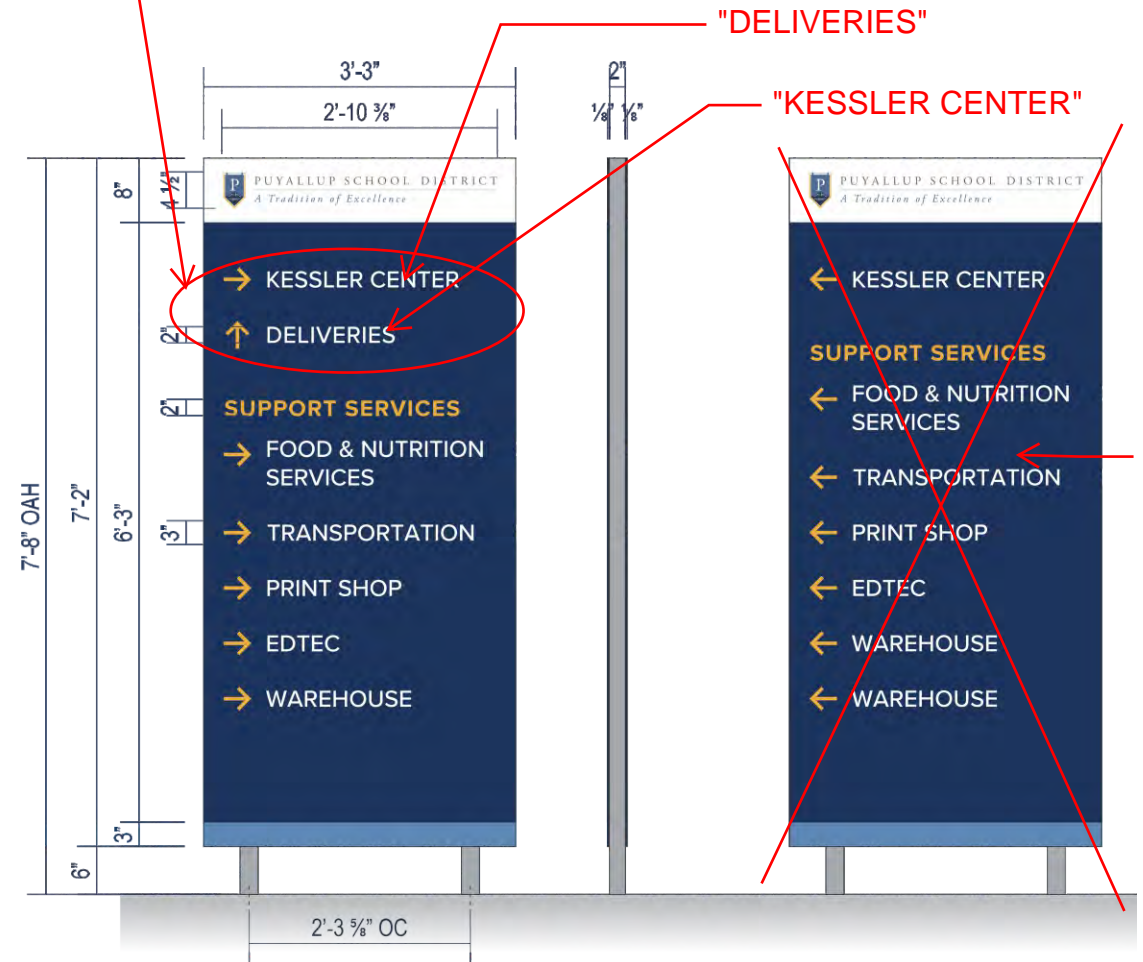


SITE MAP
SCALE: NTS

SEE SHEET 14 FOR PROPOSED LOCATION ON SITE MAP

Permit Issued

REVERSE VERBIAGE SO THAT "DELIVERIES" IS ON TOP AND "KESSLER CENTER" IS BELOW.

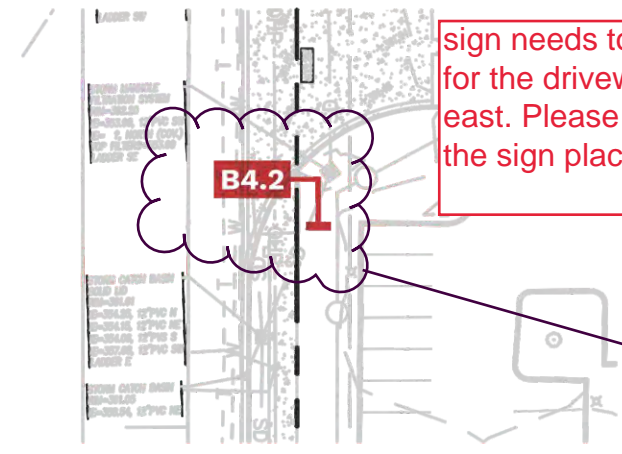


B4.2 - NORTH VIEW **PROFILE VIEW** **B4.2 - SOUTH VIEW**

SCALE: 1/2"=1'-0"
QTY (1)

DELETE BACK SIDE OF SIGN

Building Comments: Reviewed for Code Compliance Ray Cockerham 1/21/2021



SITE MAP
SCALE: NTS

SEE SHEET 15 FOR PROPOSED LOCATION ON SITE MAP

Incorrect sign location see approved sign location for sign B4.2 on Sheet 3 of 5, b-21-0495 resub 2 plans, Sheet 1 of 5.

APPROVED PLAN
CITY OF PUYALLUP
PLANNING DIVISION

APPROVED BY: RNBrown
DATE: 01/25/2022
CASE NO.: B-21-0495
CONDITIONS:

City of Puyallup Development Engineering APPROVED

See permit for additional requirements.

ychariou 12/23/2021 9:36:33 AM



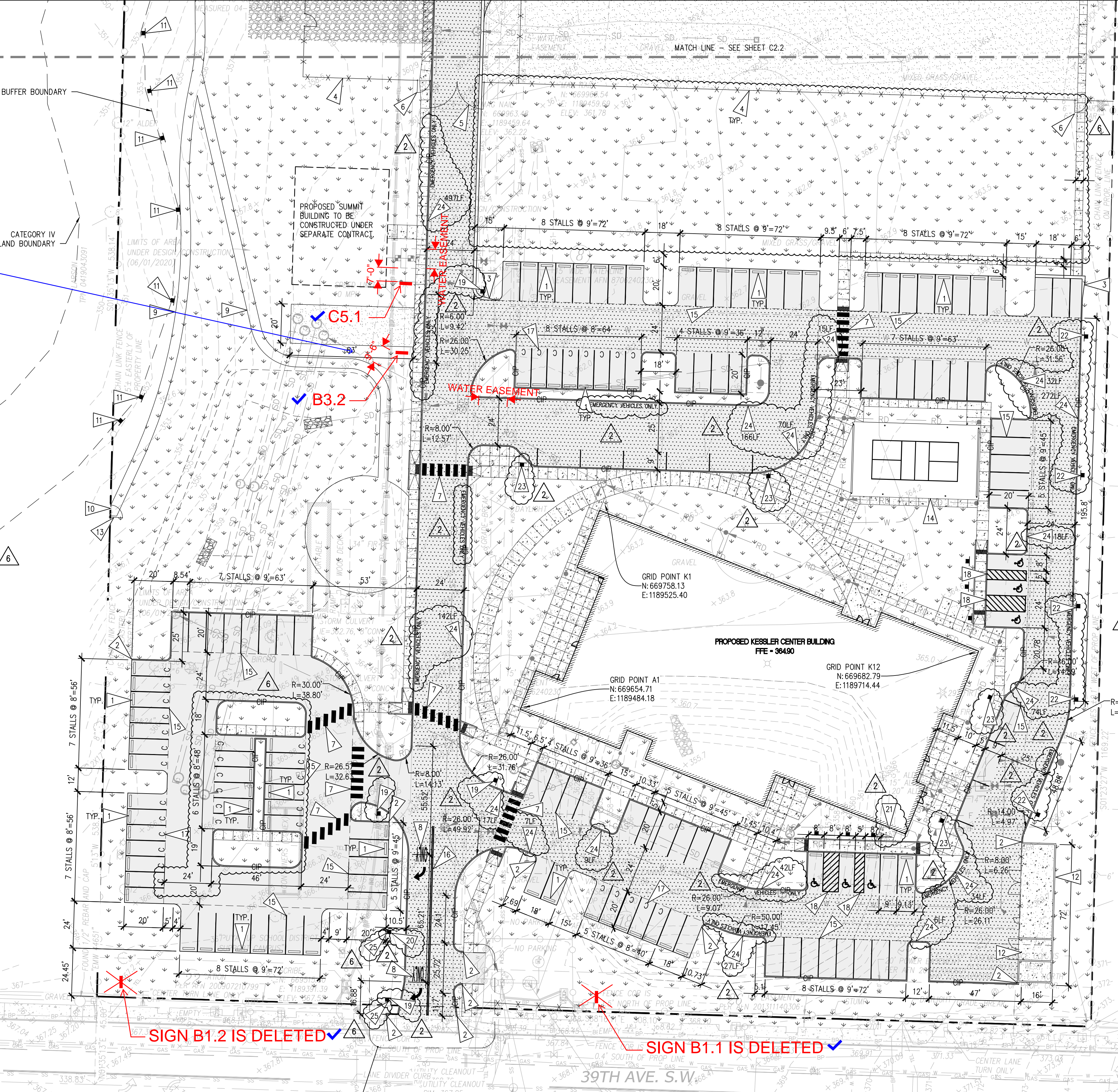
Any public curb, gutter, or sidewalk broken now or during the course of construction shall be removed and replaced per City Standards.

Prior to starting site work, request an erosion and sediment inspection through the CityView portal.

B3.2 shall be installed at least 9'6" from underground roof drain line as indicated on plans.

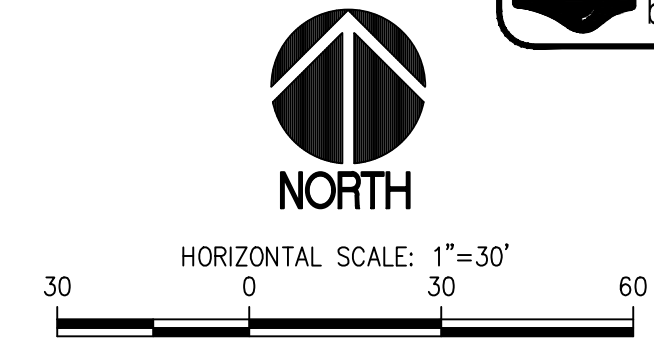
KEY NOTES

- 1 INSTALL WHEEL STOP PER DETAIL 02/C2.4.
2 END CURB PER DETAIL 05/C2.4.
3 ASPHALT WEDGE CURB TRANSITION PER DETAIL 06/C2.4.
4 REINSTALL SALVAGED CHAIN LINK FENCING AND/OR PROVIDE NEW FENCING TO MATCH EXISTING PER DETAIL 07/C2.4.
5 INSTALL CHAIN LINK VEHICLE GATE PER DETAIL 07/C2.4.
6 INSTALL CHAIN LINK PEDESTRIAN GATE PER DETAIL 11/C2.4.
7 CROSSWALK PER DETAIL 09/C2.4.
8 PROVIDE PAVEMENT ARROWS AND "ONLY" LETTERS PER DETAILS 01 AND 02/C2.5.
9 5' WIDE NATURE PATH. SEE LANDSCAPE PLANS. PER BID ALTERNATE 2. BASE BID IS NO PATH INSTALLATION.
10 COORDINATE END OF NATURE PATH AND LOCATION OF PEDESTRIAN GATE WITH PUYALLUP SCHOOL DISTRICT AND NEIGHBORING PROPERTY OWNER. BID ALTERNATE 2.
11 REINSTALL SALVAGED WETLAND SIGNAGE PER DETAIL 15/C2.4.
12 WALLED ENCLOSURE PER ARCHITECTURAL PLANS. INTERIOR CONCRETE SLABS PER STRUCTURAL.
13 INSTALL CHAIN LINK PEDESTRIAN GATE PER DETAIL 11/C2.4. BID ALTERNATE 2. BASE BID IS NO GATE INSTALLATION.
14 COVERED SPORTS COURT. SEE ARCHITECTURAL PLANS. BID ALTERNATE 1. BASE BID IS GRASS SURFACING INSTALLATION PER LANDSCAPE PLANS.
15 4" WIDE WHITE STRIPING (TYP)
16 8" WIDE YELLOW LANE STRIPE
17 "C" LETTER PAINTED PAVEMENT MARKING PER DETAIL 08/C2.5
18 4" WIDE WHITE STRIPING PER DETAIL 07/C2.5.
19 STOP SIGN PER DETAILS 03 AND 05/C2.6.
20 "RIGHT TURN ONLY" SIGN PER MUTCD R3-5R. MOUNT PER 03/C2.6.
21 GAS METER ENCLOSURE PER ARCHITECTURAL SHEET A-703.
22 NO PARKING FIRE LANE SIGN PER DETAIL 06/C2.5.
23 DROP-OFF/PICK-UP 15 MINUTE PARKING SIGN PER DETAIL 06/C2.5.
24 PAINT CURB PER DETAIL 08/C2.4. LENGTH PER PLAN.
25 "NO TRUCKS" SIGN PER MUTCD R5-2A FACING INBOUND TRAFFIC. MOUNT PER 03/C2.6.



APPROVED BY CITY OF PUYALLUP ENGINEERING SERVICES

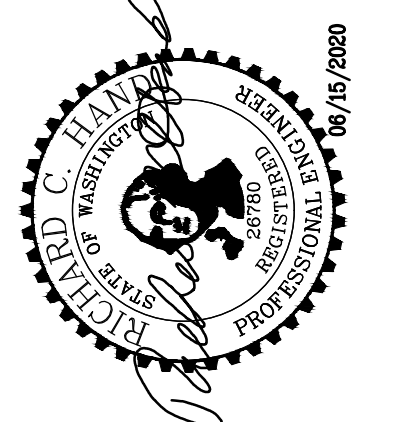
Call 811 two business days before you dig



- LEGEND: LIGHT DUTY ASPHALT PAVEMENT PER DETAIL 12/C2.4, HEAVY DUTY ASPHALT PAVEMENT PER DETAIL 13/C2.4, CONCRETE WALK, SEE LANDSCAPE PLANS, HEAVY DUTY CONCRETE WALK, SEE LANDSCAPE PLANS, SEE LANDSCAPE PLANS FOR SURFACING REQUIREMENTS, GRAVEL SURFACING PER DETAIL 04/C2.4, CAST-IN-PLACE CONCRETE CURB PER DETAIL 03/C2.4, ASPHALT WEDGE CURB PER DETAIL 01/C2.4, COMPACT PARKING STALL PER DETAIL 08/C2.5, ADA PARKING STALL, PAINT PER DETAIL 10/C2.4 AND INSTALL SIGNAGE PER DETAILS 05 & 06/C2.5, CHAIN LINK FENCING, EMERGENCY VEHICLES ONLY 24" TALL YELLOW PAINT LETTERING

- GENERAL NOTES: 1. ALL RADII AND DIMENSIONS ARE TO THE FACE OF CURB, FACE OF WALL, FACE OF BUILDING, FLOWLINE OR FACE OF SIDEWALK, UNLESS OTHERWISE NOTED. 2. ALL PAVEMENT MARKINGS SHALL BE PAINT APPLIED IN TWO (2) APPLICATIONS. THE TIME PERIOD BETWEEN APPLICATIONS SHALL BE IN ACCORDANCE WITH WSDOT SPECIFICATION SECTION 8-22.3. PAINT SHALL BE TOP-COATED WITH GLASS BEADS PER WSDOT SPECIFICATION SECTION 8-22.3(3)G. PARKING STALL PAINT STRIPING SHALL BE 4" WIDE WHITE PAINT. 3. SEE LANDSCAPE PLANS FOR LANDSCAPING, IRRIGATION, NON-VEHICULAR PAVEMENT PAINT, LANDSCAPE CURBING AND OTHER SURFACE FEATURES SHOWN HEREIN. 4. WHERE CONFLICTS OCCUR BETWEEN PLACEMENT OF NEW FACILITIES, THEY SHALL BE BROUGHT TO THE ATTENTION OF THE ENGINEER BY THE CONTRACTOR, AND WILL BE RESOLVED BY THE ENGINEER. 5. ANY CURB, GUTTER, SIDEWALK OR OTHER EXISTING IMPROVEMENTS WHICH ARE DAMAGED NOW OR DURING THE COURSE OF CONSTRUCTION, OR WHICH DO NOT MEET CURRENT CITY OF PUYALLUP STANDARDS, SHALL BE REPLACED. 6. SEE CIVIL GRADING AND DRAINAGE PLANS FOR ACCESSIBILITY RAMP REQUIREMENTS.

SITTS & HILL ENGINEERS, INC. CIVIL • STRUCTURAL • SURVEYING 4815 CENTER STREET | TACOMA, WA 98409 PHONE: (253) 474-9449 | FAX: (253) 474-0153



PROJECT FOR PUYALLUP SCHOOL DISTRICT KESSLER CENTER 1501 39TH AVENUE SOUTHWEST PUYALLUP, WA 98373

REVISIONS table with columns for date, description, and version.

DATE: 02.26.2020 BCRA NO: 18103 DRAWN BY: REVIEWED BY: SHEET TITLE: SURFACING PLAN



C2.1 CONFORMED SET

IF SHEET MEASURES LESS THAN 22"x34", IT IS A REDUCED PRINT. REDUCE SCALE ACCORDINGLY

LEGEND SEE C0.2 FOR LIST OF EXISTING AND PROPOSED FEATURES

PROPOSED FEATURES-

	HEAVY DUTY ASPHALT PAVEMENT PER DETAIL 13/C2.4.
	CONCRETE WALK, SEE LANDSCAPE PLANS
	HEAVY DUTY CONCRETE WALK, SEE LANDSCAPE PLANS
	SEE LANDSCAPE PLANS FOR SURFACING REQUIREMENTS
	GRAVEL SURFACING PER DETAIL 04/C2.4.
	CAST-IN-PLACE CONCRETE CURB PER DETAIL 03/C2.4
	ASPHALT WEDGE CURB PER DETAIL 01/C2.4

- GENERAL NOTES**
- ALL RADI DIMENSIONS ARE TO THE FACE OF CURB, WALL, FLOWLINE OR FACE OF SIDEWALK, UNLESS OTHERWISE NOTED.
 - ALL PAVEMENT MARKINGS SHALL BE PAINT APPLIED IN TWO (2) APPLICATIONS. THE TIME PERIOD BETWEEN APPLICATIONS SHALL BE IN ACCORDANCE WITH WSDOT SPECIFICATION SECTION 8-22.3. PAINT SHALL BE TOP-COATED WITH GLASS BEADS PER WSDOT SPECIFICATION SECTION 8-22.3(3)G. PARKING STALL PAINT STRIPING SHALL BE 4" WIDE WHITE PAINT.
 - SEE LANDSCAPE PLANS FOR LANDSCAPING, IRRIGATION, NON-VEHICULAR PAVEMENT PAINT, LANDSCAPE CURBING AND OTHER SURFACE FEATURES SHOWN HEREIN.
 - WHERE CONFLICTS OCCUR BETWEEN PLACEMENT OF NEW FACILITIES, THEY SHALL BE BROUGHT TO THE ATTENTION OF THE ENGINEER BY THE CONTRACTOR, AND WILL BE RESOLVED BY THE ENGINEER.
 - ANY CURB, GUTTER, SIDEWALK OR OTHER EXISTING IMPROVEMENTS WHICH ARE DAMAGED NOW OR DURING THE COURSE OF CONSTRUCTION, OR WHICH DO NOT MEET CURRENT CITY OF PUYALLUP STANDARDS, SHALL BE REPLACED.
 - SEE CIVIL GRADING AND DRAINAGE PLANS FOR ACCESSIBILITY RAMP REQUIREMENTS.

- KEY NOTES**
- REINSTALL SALVAGED CHAIN LINK FENCING AND/OR PROVIDE NEW FENCING TO MATCH EXISTING PER DETAIL 07/C2.4.
 - INSTALL CHAIN LINK VEHICLE GATE PER DETAIL 07/C2.4. 27'-6" WIDTH.
 - INSTALL CHAIN LINK PEDESTRIAN GATE PER DETAIL 11/C2.4.
 - CROSSWALK PER DETAIL 09/C2.4.
 - PROVIDE ASPHALT JOINT PER DETAIL 14/C2.4.
 - 5' WIDE NATURE PATH. SEE LANDSCAPE PLANS. PER BID ALTERNATE 2. BASE BID IS NO PATH INSTALLATION.
 - COORDINATE END OF NATURE PATH WITH PUYALLUP SCHOOL DISTRICT AND NEIGHBORING PROPERTY OWNER. BID ALTERNATE 2.
 - REINSTALL SALVAGED WETLAND SIGNAGE PER DETAIL 15/C2.4.
 - INSTALL NEW WETLAND SIGNAGE PER DETAIL 15/C2.4.
 - INSTALL CHAIN LINK PEDESTRIAN GATE PER DETAIL 11/C2.4. IN BID ALTERNATE 2. BASE BID IS NO GATE INSTALLATION.
 - ASPHALT WEDGE CURB TRANSITION PER DETAIL 06/C2.4.

APPROVED

BY: CITY OF PUYALLUP ENGINEERING SERVICES

DATE:

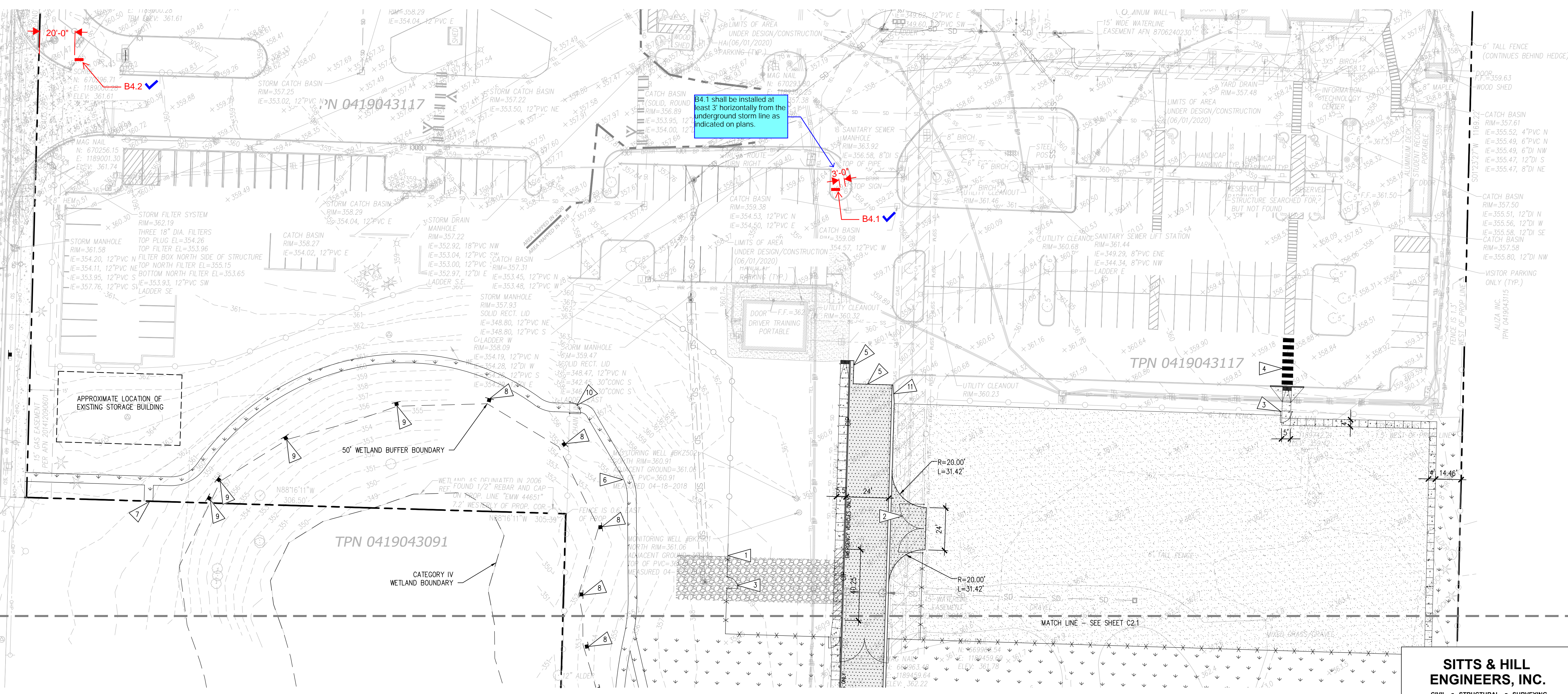
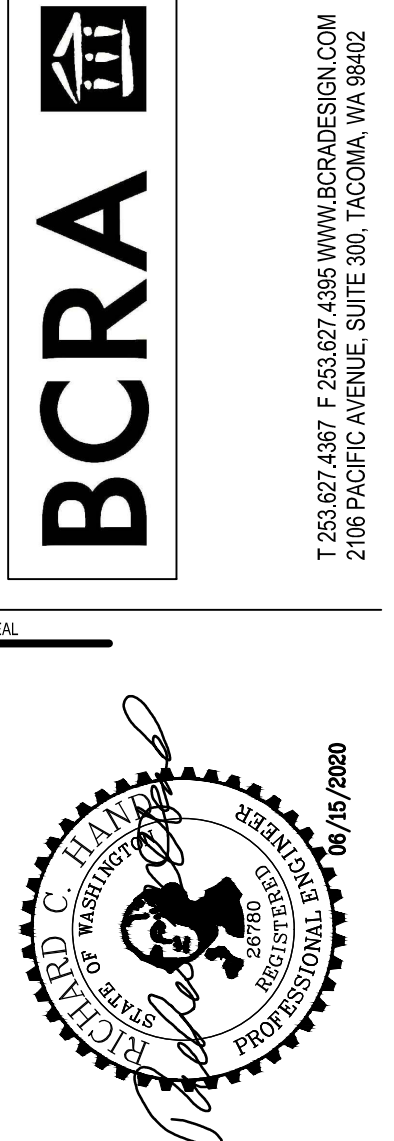
NOTE: THIS APPROVAL IS VOID AFTER 1 YEAR FROM APPROVAL DATE. THE CITY WILL NOT BE RESPONSIBLE FOR ERRORS AND/OR OMISSIONS ON THESE PLANS. FIELD CONDITIONS MAY DICTATE CHANGES TO THESE PLANS AS DETERMINED BY THE ENGINEERING SERVICES MANAGER.



811 Call 811
two business days before you dig

HORIZONTAL SCALE: 1"=30'

30 0 30 60



SURFACING PLAN
SCALE: 1"=30'

PROJECT
FOR PUYALLUP SCHOOL DISTRICT
KESSLER CENTER
1501 39TH AVENUE SOUTHWEST
PUYALLUP, WA 98373

REVISIONS

03-16-2020	ADDENDUM 2
03-19-2020	ADDENDUM 3
04-03-2020	CONFORMED SET
03-20-2020	ADDENDUM 4
05-21-2020	PERMIT RESPONSE
06-15-2020	CONFORMED SET

DATE: 02.26.2020

BCRA NO.: 18103

DRAWN BY:

REVIEWED BY:

SHEET TITLE: SURFACING PLAN

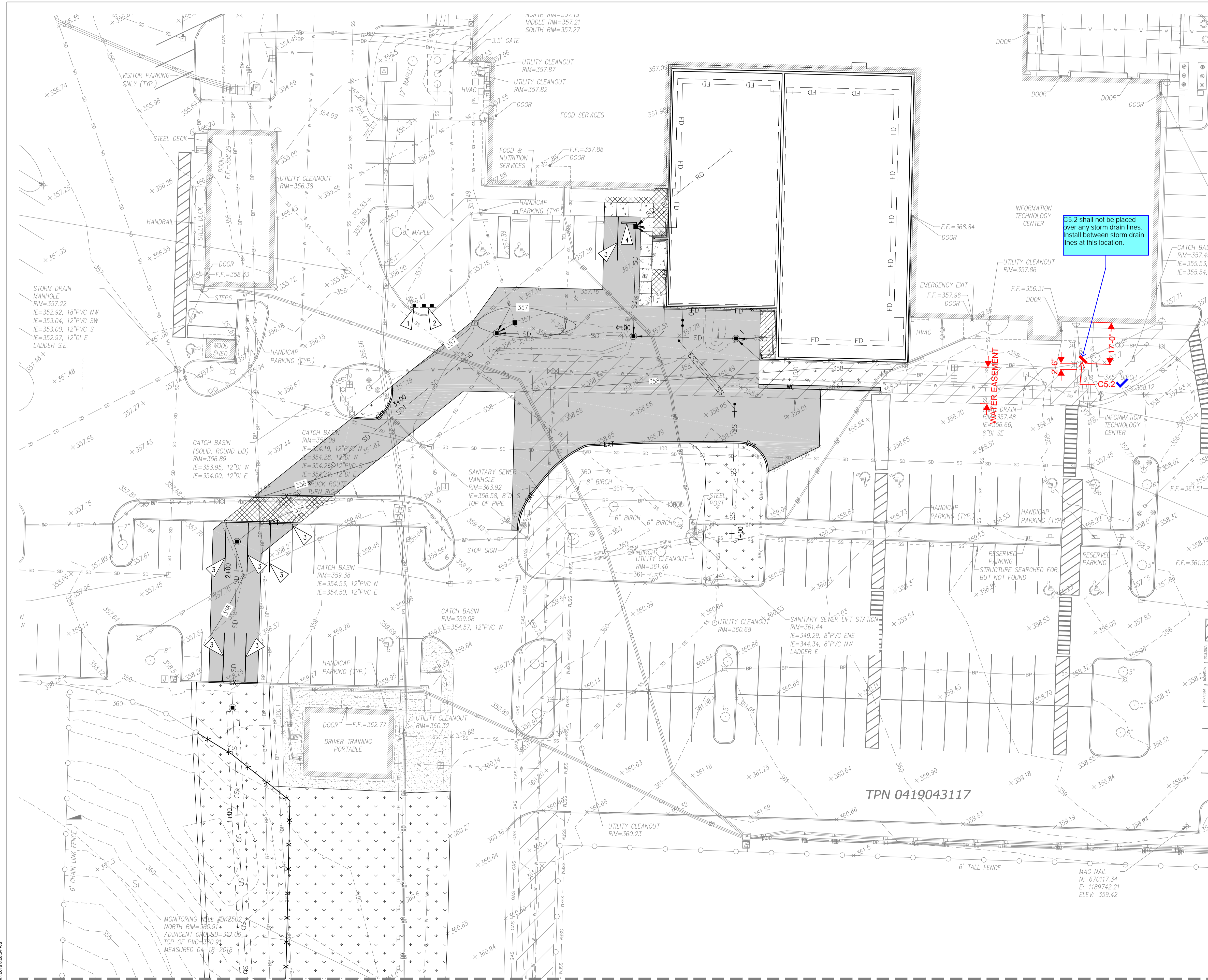
SITTS & HILL ENGINEERS, INC.
CIVIL • STRUCTURAL • SURVEYING
4815 CENTER STREET | TACOMA, WA 98409
PHONE: (253) 474-9449 | FAX: (253) 474-0153
http://www.sittshill.com/

Project No.:	18,328	Project Mgr.:	RCH
Proj. Engineer:	VMS	Proj. Drafter:	KLK

BCRA
© COPYRIGHT 2020 - BCRA, INC. ALL RIGHTS RESERVED.
SHEET CIVIL 10 OF 32

C2.2
CONFORMED SET

IF SHEET MEASURES LESS THAN 22"x34", IT IS A REDUCED PRINT. REDUCE SCALE ACCORDINGLY

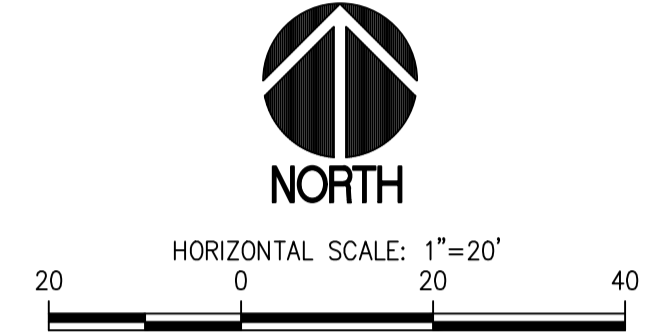


APPROVED

BY: _____
CITY OF PUYALLUP
ENGINEERING SERVICES

DATE: _____

NOTE: THIS APPROVAL IS VOID AFTER 1 YEAR FROM APPROVAL DATE. THE CITY WILL NOT BE RESPONSIBLE FOR ERRORS AND/OR OMISSIONS ON THESE PLANS. FIELD CONDITIONS MAY DICTATE CHANGES TO THESE PLANS AS DETERMINED BY THE ENGINEERING SERVICES MANAGER.



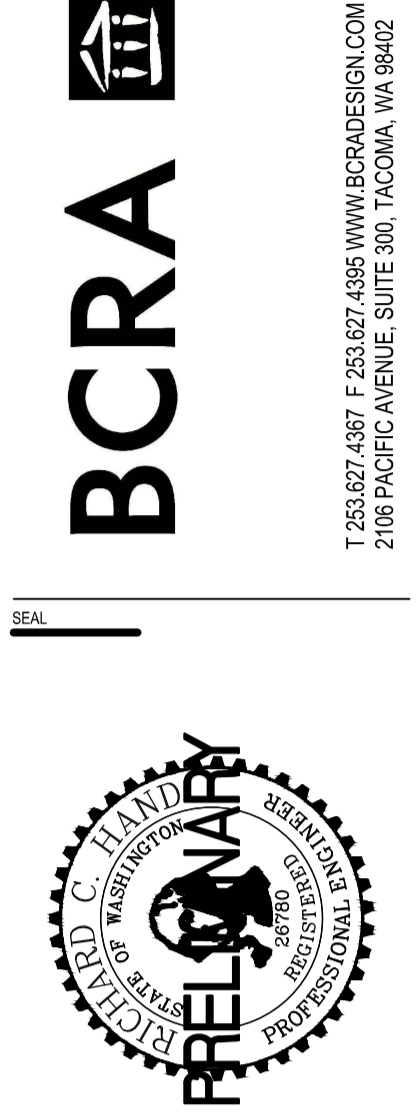
- LEGEND**
- PROPOSED FEATURES-**
- ASPHALT PAVEMENT PER DETAILS 4 & 5/C2.3
 - CONCRETE WALK PER DETAIL 1/C2.3
 - GRAVEL ACCESS PER DETAIL 6/C2.3
 - RESTORE LANDSCAPE WITH 8" DEPTH OF COMPOST AMENDED TOPSOIL PER DOE BMP T5.13 & TURFGRASS HYDROSEED PER DETAIL 7/C2.3
 - RESTORE LANDSCAPE WITH 8" COMPOST TOPSOIL BELOW TURFGRASS SEEDING PER DETAIL 7/C2.3
 - 6" CONCRETE DRIVEWAY SLAB PER DETAIL 2/C2.3
 - EXTRUDED CONCRETE CURB PER DETAIL 3/C2.3
 - WEDGE CURB PER DETAIL 9/C2.3
 - TYPE 1 CATCH BASIN
 - TYPE 2 CATCH BASIN
 - CONCRETE WHEEL STOP
 - 6" CHAIN LINK FENCE WITH BARB WIRE

GENERAL NOTES

1. ---

KEY NOTES

- 1 RELOCATED 10MPH SPEED LIMIT SIGN & POST
- 2 RELOCATED SITE SIGN & POST
- 3 PROVIDE 4" WIDE WHITE STRIPING, 20' LONG
- 4 INSTALL WHEEL STOP PER DETAIL 10/C2.3



PROJECT

FOR PUYALLUP SCHOOL DISTRICT
NEW WAREHOUSE ADDITION
1501 39TH AVENUE SOUTHWEST
PUYALLUP, WA 98373

REVISIONS

NO.	DATE	DESCRIPTION

DATE: 11.7.2018
BCRA NO.: 17196
DRAWN BY: _____
REVIEWED BY: _____
SHEET TITLE: SURFACING PLAN

SITTS & HILL ENGINEERS, INC.
CIVIL • STRUCTURAL • SURVEYING
4815 CENTER STREET | TACOMA, WA 98409
PHONE: (253) 474-8449 | FAX: (253) 474-0153
http://www.sittshill.com

BCRA
© COPYRIGHT 2011-2018 BCRA, INC. ALL RIGHTS RESERVED.
SHEET CIVIL 08 OF 19

Project No.: 17,857 Project Mgr.: RCH
Proj. Engineer: RCH Proj. Drafter: KLK

C2.2

QC BID SET

SURFACING PLAN
SCALE: 1"=20'
MATCH LINE - SEE SHEET C2.1

2024 6/12/2018 8:08:54 AM

