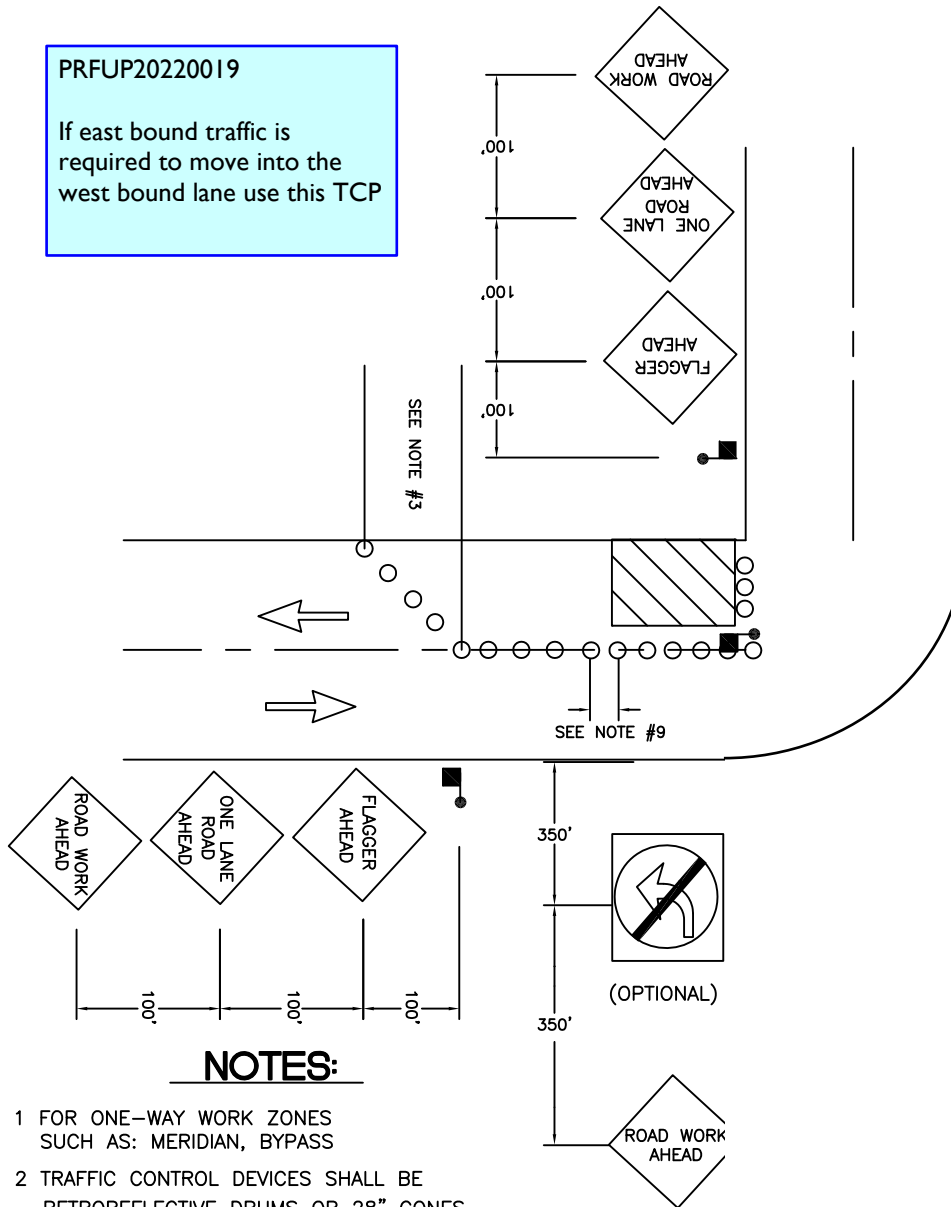


NAME OF STREET: _____

PRFUP20220019

If east bound traffic is required to move into the west bound lane use this TCP



NOTES:

- 1 FOR ONE-WAY WORK ZONES SUCH AS: MERIDIAN, BYPASS
- 2 TRAFFIC CONTROL DEVICES SHALL BE RETROREFLECTIVE DRUMS OR 28" CONES
- 3 TAPER LENGTH 100' MAXIMUM
- 4 DISTANCE BETWEEN SIGNS IS MANDATORY UNLESS FIELD CONDITIONS DETERMINE OTHERWISE
- 5 SIGN SPACING SHALL BE 100 FEET WHEN SPEED LIMIT IS 30 MPH OR LESS
- 6 SIGN SPACING SHALL BE 350 FEET WHEN SPEED LIMIT IS GREATER THAN 30 MPH
- 7 CALL COMM CENTER DAY OF CLOSURE 841-5431
 - 7.1 CLOSURE FOR WEEKDAYS ONLY
 - 7.2 TIMES: 9:00 AM TO 3:00 PM
- 8 IF LEFT TURN MOVEMENT IS PROHIBITED, PROVIDE DETOUR ROUTE
- 9 DISTANCE BETWEEN CONES EQUALS SPEED LIMIT IN UNITS OF FEET

Distance between cones equals speed limit in unit feet
 Taper length equals width of offset times speed squared divided by 60
 Sign spacing shall be 100 feet when speed limits is 30 MPH or less
 Sign spacing shall be 350 feet when speed limit is greater than 30 MPH
 Distance between signs is mandatory unless field conditions determine otherwise

CLOSURE ALLOWED:

Monday - Friday
 9AM - 3PM

Call communications center
 at 253-287-4456 on day of
 closure.



**CITY OF
 PUYALLUP
 TRAFFIC
 ENGINEERING
 DIVISION**

CLOSURE AT INTERSECTION

DRAWN J. HUNTER	PLOTTING SCALE NTS/ 1=1	DATE APPROVED 04-03	REVISED 09-30-09	TCP STANDARD
FILE NAME I:\DRAWINGS\PUBLIC WORKS\TRAFFIC\TCP	CHECKED BY M. FORD	REVISED BY S. TANDLE	NO. 1	