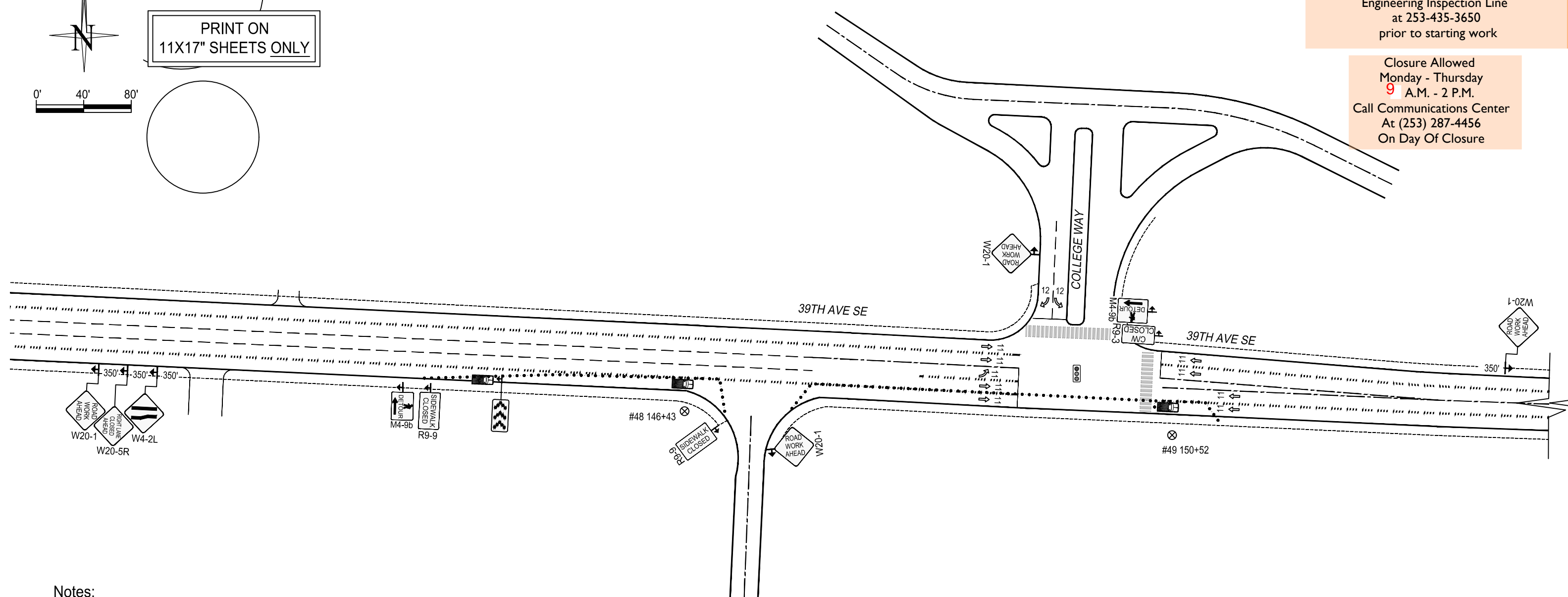
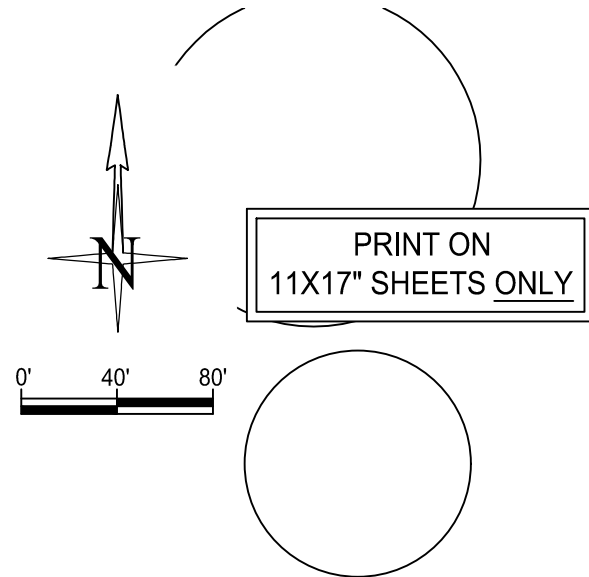


The applicant is responsible to call the Engineering Inspection Line at 253-435-3650 prior to starting work

Closure Allowed Monday - Thursday 9 A.M. - 2 P.M.  
Call Communications Center At (253) 287-4456 On Day Of Closure

TEMPORARY TRAFFIC CONTROL PLAN



- Notes:
1. All signs and spacing to conform to the MUTCD and City of Puyallup standards.
  2. All sidewalks, driveways, exits and egresses shall be completely clear unless otherwise indicated.
  3. Channelizing devices are 28" traffic cones. Use traffic drums (barrels) with steady burning Type C lights on all State State Routes and Hwys.
  4. Sign size can be a minimum of 36" x 36" and shall not obstruct pedestrian access.
  5. Crew is required to leave a minimum of 11' for traveling lane width.
  6. Alert affected residents and businesses.
  7. Work to take place between 9 a.m. and 4 p.m unless otherwise specified. All work for arterials and major roadways will be from 9 a.m. to 3 p.m.

Spotter must be available to assist with pedestrians if needed

LEGEND	
	28" TRAFFIC CONE
	WORK PIT
	TRAFFIC FLOW
	WORK VEHICLE/ FLASHING LIGHTS
	SIGN LOCATION
	RIGHT OF WAY ROW

SIGN SPACING	
MPH	"X"
60/65	1000'
45/55	500'
35/40	350'
30	200'
25	100'

CHANNELIZATION DEVICE SPACING		
MPH	TAPER	TANGENT
55/70	40	80
35/45	30	60
25/30	20	40

**PSE** PUGET SOUND ENERGY  
 Designer:  
 YURIY BASHTOVOY  
 (425) 424-6603  
 Yuriy.Bashtovoy@PSE.COM  
 Project Address:  
 1111 39th Ave SE, Puyallup, WA\_recover

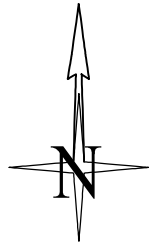
Puget Sound Energy Traffic Control Supervisor: Yuriy S. Bashtovoy Card No. 011887 Card Exp. 06/30/2022 Yuriy.Bashtovoy@pse.com (425)424-6603 	12/21/2021	REV 0
	Job # 111022191	
	Page	1 OF 2

TEMPORARY TRAFFIC CONTROL PLAN

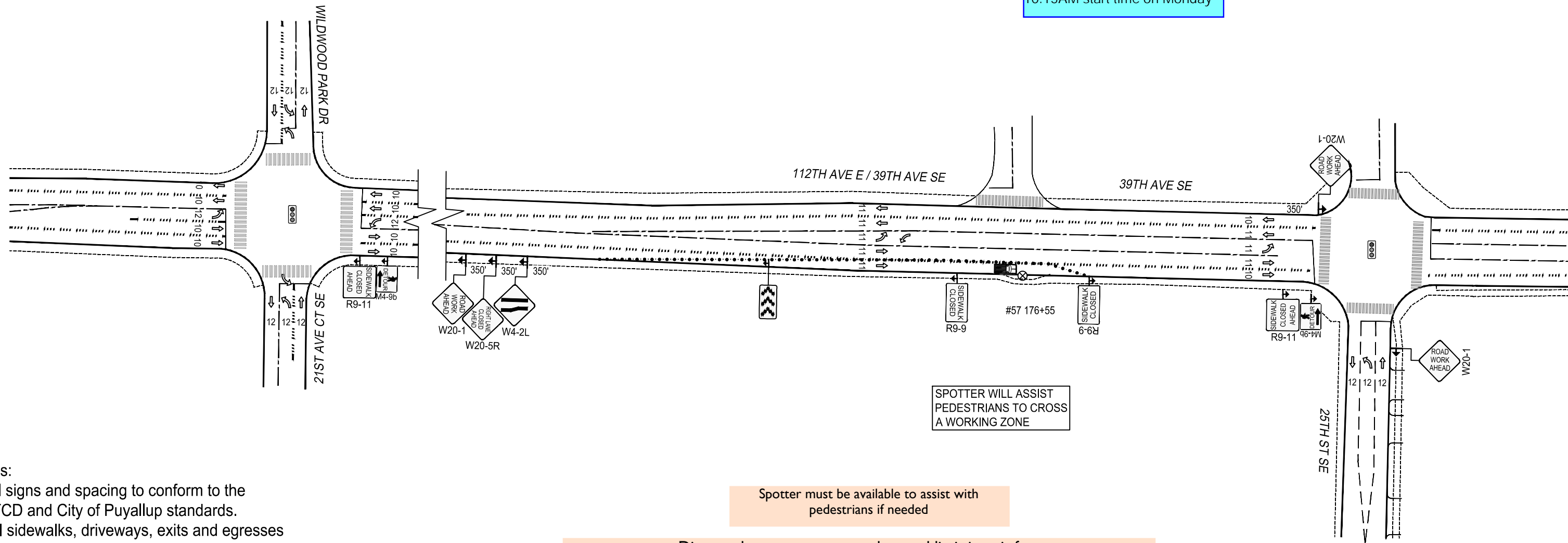
The applicant is responsible to call the Engineering Inspection Line at 253-435-3650 prior to starting work

Closure Allowed Monday - Thursday 9 A.M. - 2 P.M.  
Call Communications Center At (253) 287-4456 On Day Of Closure

10:15AM start time on Monday



PRINT ON 11X17" SHEETS ONLY



SPOTTER WILL ASSIST PEDESTRIANS TO CROSS A WORKING ZONE

Spotter must be available to assist with pedestrians if needed

Distance between cones equals speed limit in unit feet  
Taper length equals width of offset times speed squared divided by 60  
Sign spacing shall be 100 feet when speed limits is 30 MPH or less  
Sign spacing shall be 350 feet when speed limit is greater than 30 MPH  
Distance between signs is mandatory unless field conditions determine otherwise

- Notes:
1. All signs and spacing to conform to the MUTCD and City of Puyallup standards.
  2. All sidewalks, driveways, exits and egresses shall be completely clear unless otherwise indicated.
  3. Channelizing devices are 28" traffic cones. Use traffic drums (barrels) with steady burning Type C lights on all State State Routes and Hwys.
  4. Sign size can be a minimum of 36" x 36" and shall not obstruct pedestrian access.
  5. Crew is required to leave a minimum of 11' for traveling lane width.
  6. Alert affected residents and businesses.
  7. Work to take place between 9 a.m. and 4 p.m unless otherwise specified. All work for arterials and major roadways will be from 9 a.m. to 3 p.m.

**LEGEND**

- 28" TRAFFIC CONE
- WORK PIT
- TRAFFIC FLOW
- WORK VEHICLE/ FLASHING LIGHTS
- SIGN LOCATION
- RIGHT OF WAY
- ROW

SIGN SPACING	
MPH	"X"
60/65	1000'
45/55	500'
35/40	350'
30	200'
25	100'

CHANNELIZATION DEVICE SPACING		
MPH	TAPER	TANGENT
55/70	40	80
35/45	30	60
25/30	20	40



Designer:  
YURIY BASHTOVOY  
(425) 424-6603  
Yuriy.Bashtovoy@PSE.COM

Project Address:  
1111 39th Ave SE, Puyallup, WA\_recover

Puget Sound Energy  
Traffic Control Supervisor:  
Yuriy S. Bashtovoy  
Card No. 011887  
Card Exp. 06/30/2022  
Yuriy.Bashtovoy@pse.com  
(425)424-6603

12/21/2021	REV 0
Job # 111022191	
Page	2 OF 2