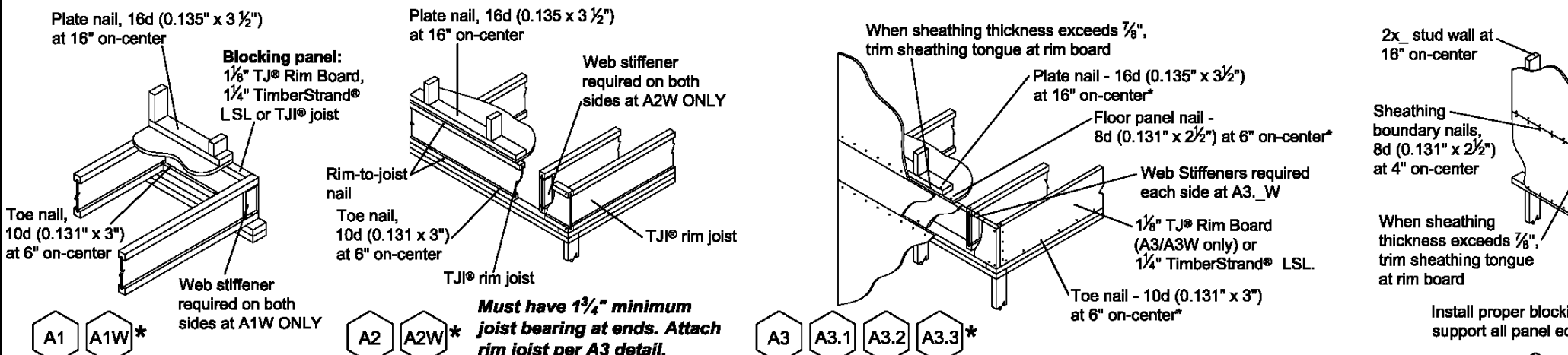
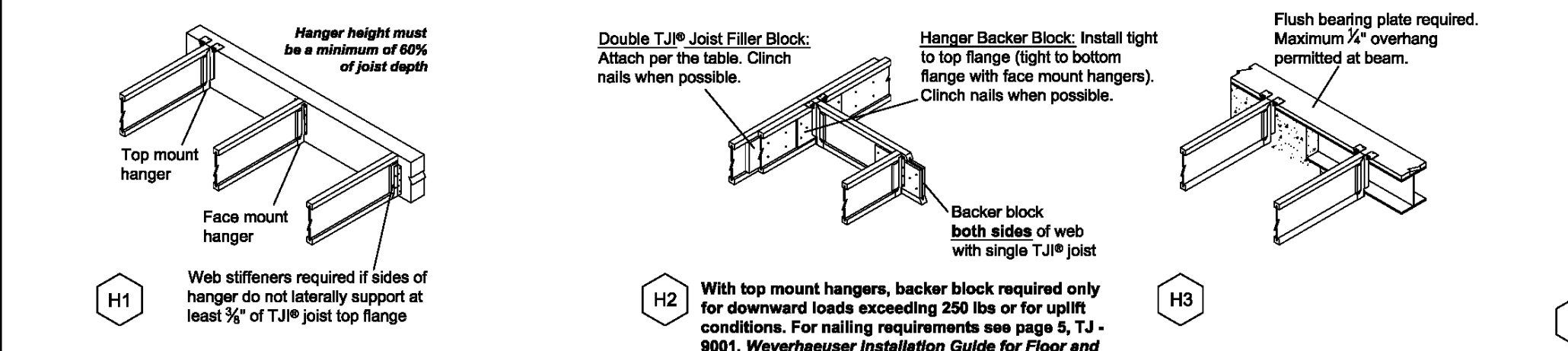
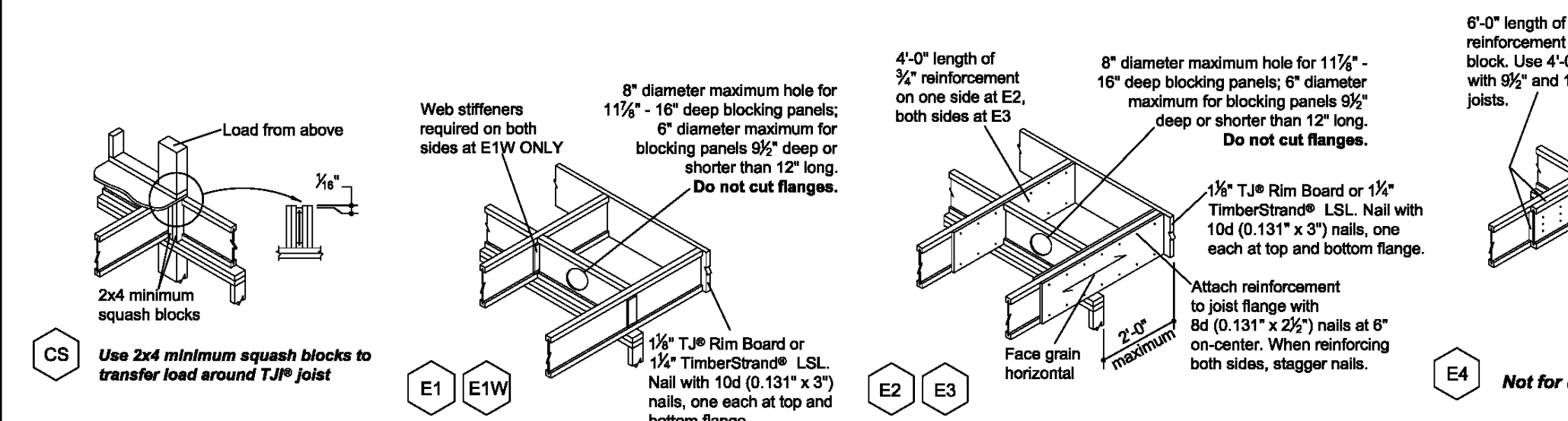


JOIST DETAILS

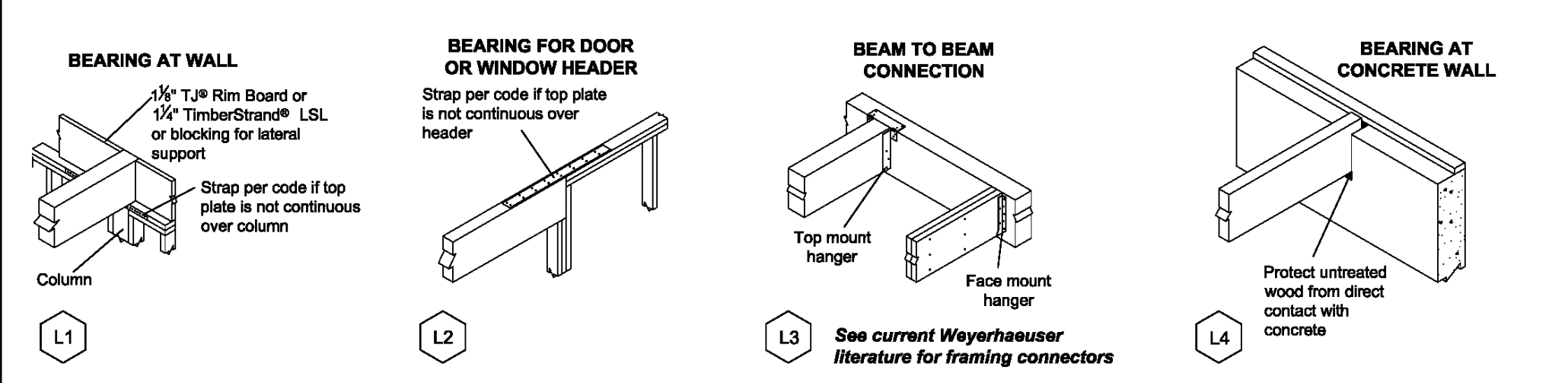


* For additional installation specifications see Rim Board Details and Installation in Weyerhaeuser Installation Guide for Floor and Roof Framing, TJ-9001.

* For additional installation specifications see Rim Board Details and Installation in Weyerhaeuser Installation Guide for Floor and Roof Framing, TJ-9001.



BEAM DETAILS



Multiple-Member Connections for Top-Loaded Beams

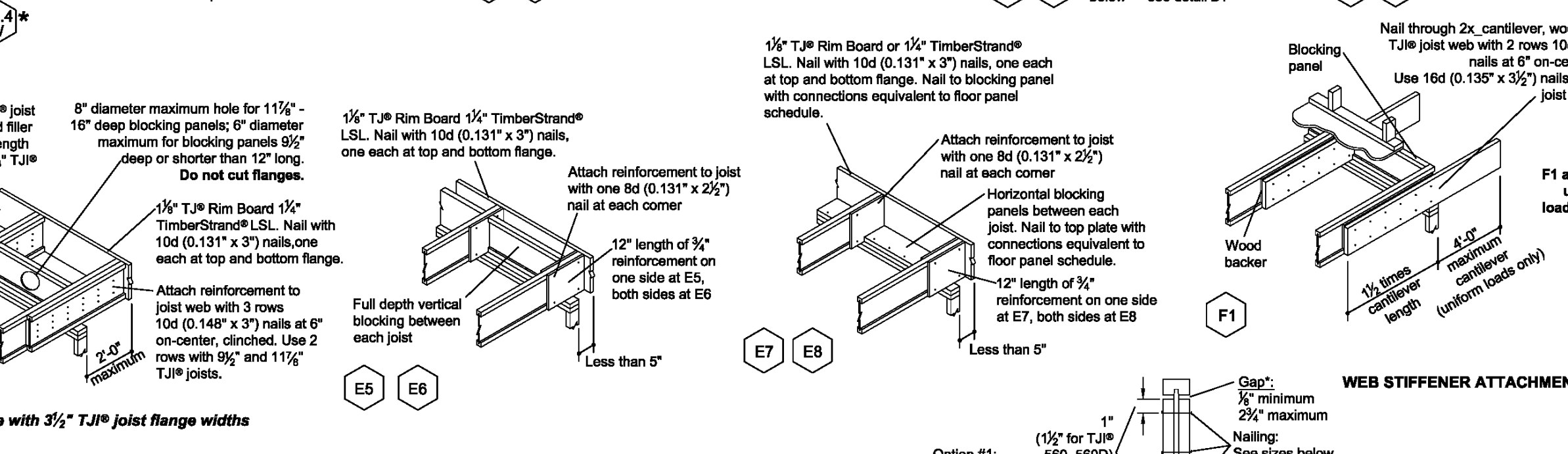
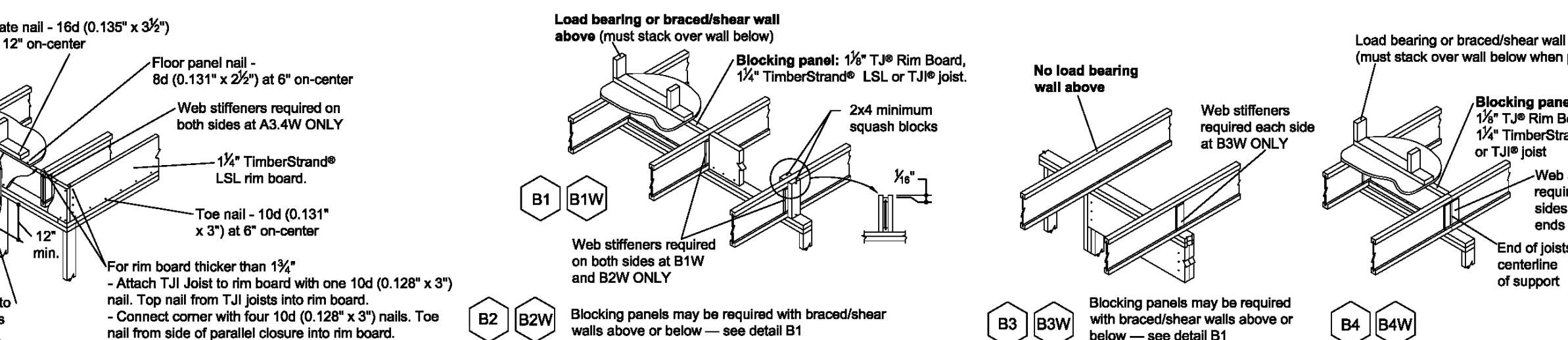
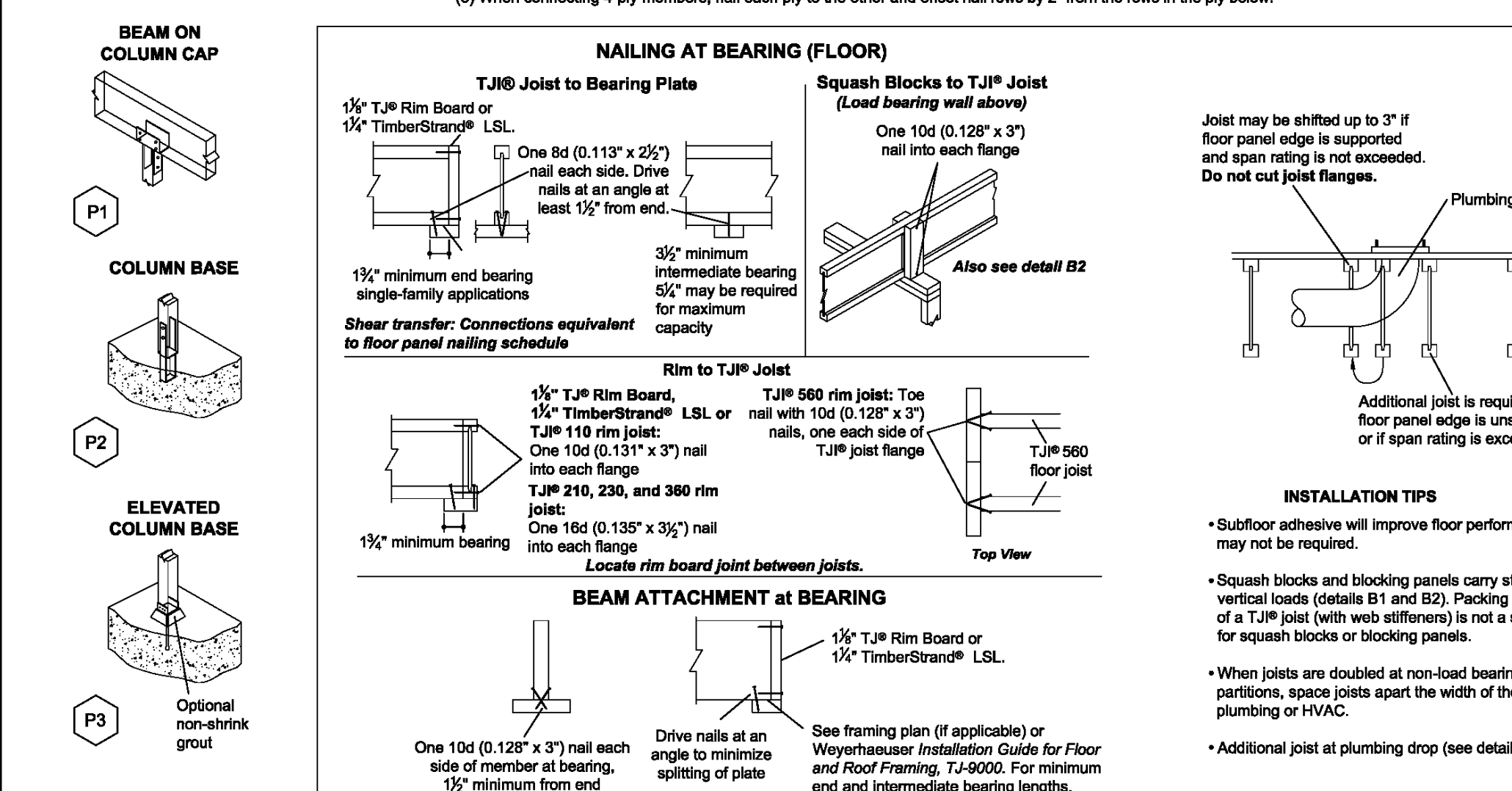
Plyce Width	# of Piles	Fastener			Location
		Type	Min. Length	# Rows	
1 1/2"	2	10d nails	3"	3"	12"
		Screws	3 1/2" or 3 3/4"	2	24"
3"	3	10d nails	3"	3"	12"
		Screws	3 1/2" or 3 3/4"	2	24"
4"	4	10d nails	3"	3"	12"
		Screws	5" or 6"	2	24"
3 1/2"	2	Screws	5" or 6"	2	24"
		1/2" bolts	8"	2	24"

When fasteners are required on both sides, stagger fasteners on the second side so they fall halfway between fasteners on the first side.

Load must be applied evenly across entire beam width. Otherwise, use connections for side-loaded beams.

Multiple pieces can be nailed or bolted together to form a header or beam of the required size, up to a maximum width of 7"

COLUMN DETAILS



FASTENING OF FLOOR PANELS

Nail Size	T&J Joist		Rim Board		1/2" TimberStrand® LSL or wider		Microlam LVL		Parallam PSL	
	110, 210, 230 & 360	560	110, 210, 230 & 360	560	110, 210, 230 & 360	560	110, 210, 230 & 360	560	110, 210, 230 & 360	560
8d (0.113" x 2 1/2")	4"	3"	4"	3"	4"	3"	4"	3"	4"	3"
10d (0.148" x 3")	4"	3"	4"	3"	4"	3"	4"	3"	4"	3"
16d (0.182" x 3 1/2")	6"	6"	6"	6"	6"	6"	6"	6"	6"	6"

(1) Stagger nails when using 4" on-center spacing and maintain 1 1/2" joist and panel edge distance. One row of fasteners is permitted (two at abutting panel edges) for diaphragm. Fastener spacing for T&J joists in diaphragm applications cannot be less than shown in table. When fastener spacing for blocking is less than spacing shown above, rectangular blocking must be used in lieu of T&J joists.

(2) For non-diaphragm applications, multiple rows of fasteners are permitted if the rows are offset at least 1/2" and staggered.

(3) With 10d (0.148" x 3") nails, spacing can be reduced to 3" on-center for tight gauge steel studs.

(4) Can be reduced to 4" on-center if nail penetration into the narrow edge is no more than 1 1/2" (to avoid splitting).

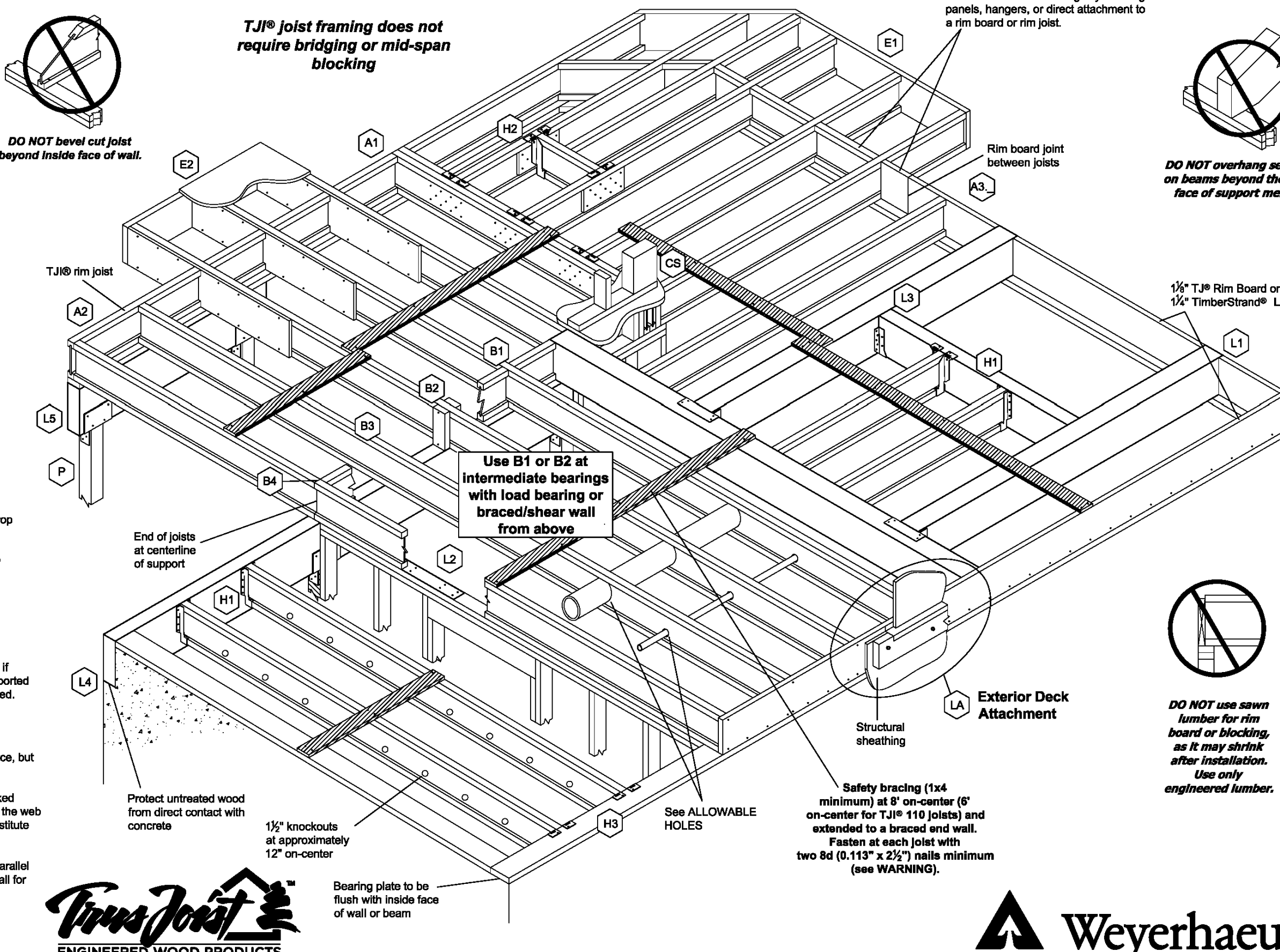
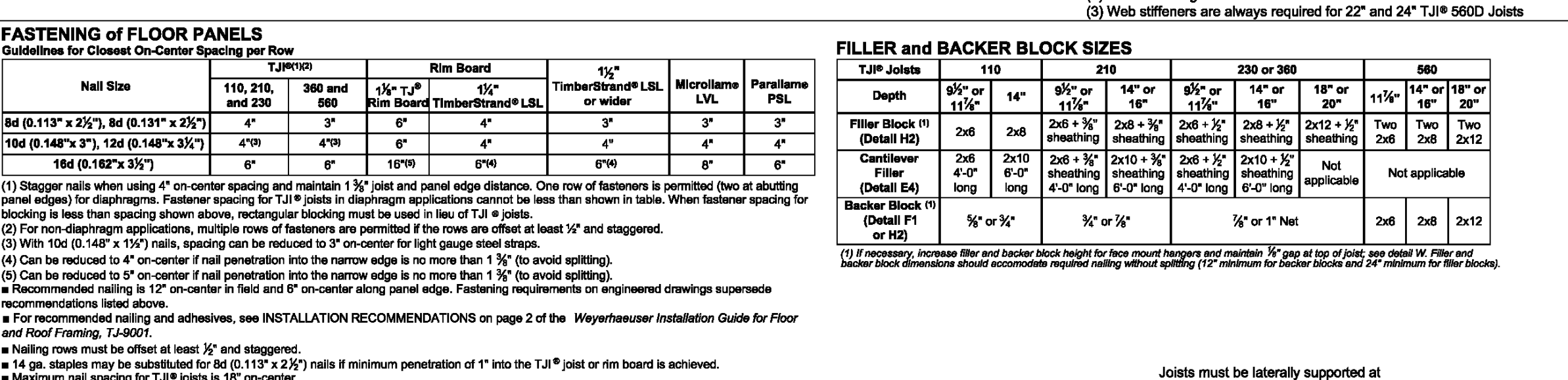
(5) Can be reduced to 5" on-center if nail penetration into the narrow edge is no more than 1 1/2" (to avoid splitting).

(6) For recommended nailing and adhesives, see INSTALLATION RECOMMENDATIONS on page 2 of the Weyerhaeuser Installation Guide for Floor and Roof Framing, TJ-9001.

(7) Nailing rows must be offset at least 1/2" and staggered.

(8) 14 ga. staples may be substituted for 8d (0.113" x 2 1/2") nails if minimum penetration of 1" into the T&J joist or rim board is achieved.

(9) Maximum nail spacing for T&J joists is 16" on-center.



ALLOWABLE HOLES - T&J® Joists

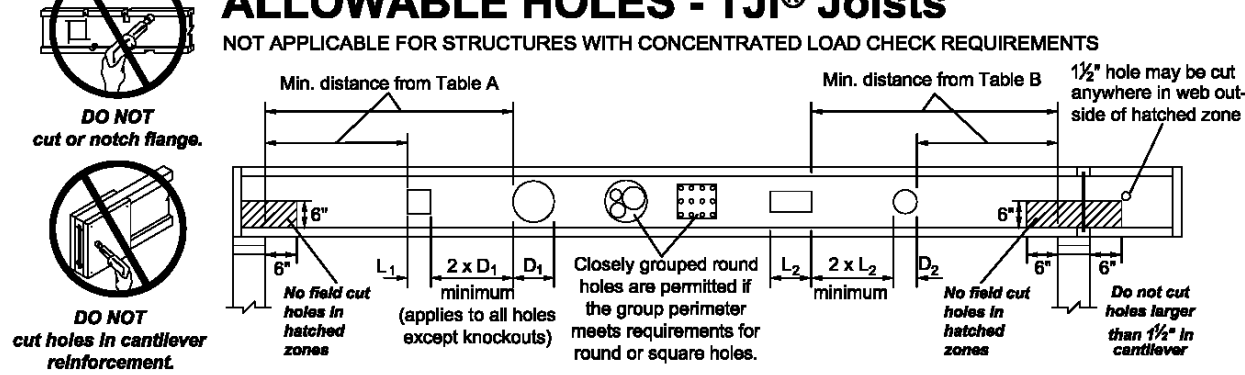


Table A - End Support

Minimum distance from edge of hole to inside face of nearest end support

JOIST DEPTH	T&J	ROUND HOLE SIZE						SQUARE OR RECTANGULAR HOLE SIZE						
		2"	3"	4"	6"	8"	10"	2"	3"	4"	6"	8"	10"	
10"	110	14"	14"	14"	14"	14"	14"	14"	14"	14"	14"	14"	14"	14"
	210	14"	14"	14"	14"	14"	14"	14"	14"	14"	14"	14"	14"	
	360	14"	14"	14"	14"	14"	14"	14"	14"	14"	14"	14"	14"	

Table B - Intermediate or Cantilever Support

Minimum distance from edge of hole to inside face of nearest intermediate or cantilever support

JOIST DEPTH	T&J	ROUND HOLE SIZE						SQUARE OR RECTANGULAR HOLE SIZE						
		2"	3"	4"	6"	8"	10"	2"	3"	4"	6"	8"	10"	
10"	110	24"	24"	24"	24"	24"	24"	24"	24"	24"	24"	24"	24"	24"
	210	24"	24"	24"	24"	24"	24"	24"	24"	24"	24"	24"	24"	
	360	24"	24"	24"	24"	24"	24"	24"	24"	24"	24"	24"	24"	

T&J Joist Series

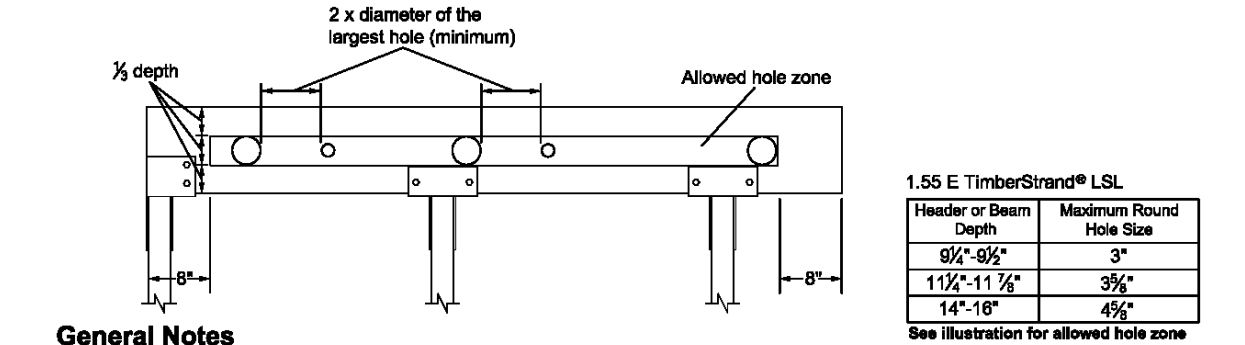
Depth (in.)	Minimum Web Stiffener Size	Type	End	Intermediate
110	All	8d		
210 & 360	All	8d (0.113" x 2 1/2")	3	3
560	All	16d (0.135" x 3 1/2")	4	4
560D	2x4	16d	5	5
	18"	20"	6	6
	22"	24"	11	11
	24"	24"	6	13

(1) PS1 or PS2 sheathing, face grain vertical

(2) Construction grade or better

(3) Web stiffeners are always required for 22" and 24" T&J 560D Joists

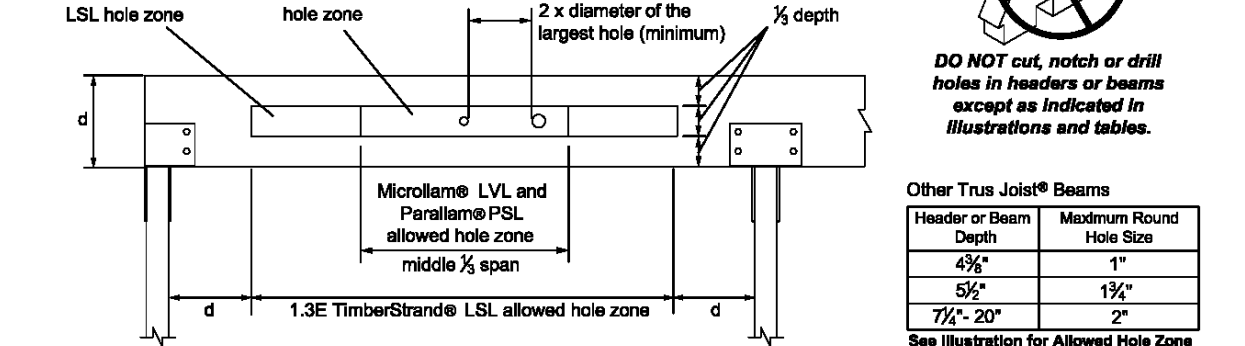
ALLOWABLE HOLES - Headers and Beams



General Notes

- Allowed hole zone suitable for headers and beams with uniform and/or concentrated loads anywhere along the member.
- Round holes only
- No holes in headers or beams in plank orientation.

Other Trus Joist® Headers and Beams



General Notes

- Allowed hole zone suitable for headers and beams with uniform loads only.
- Round holes only
- No holes in cantilevers.
- No holes in headers or beams in plank orientation.

WARNING

Joists are unstable until braced laterally

Bracing Includes:

- Blocking
- Hangers
- Rim Board
- Steel Lines
- Rim Joist

DO NOT walk on joists until braced. INJURY MAY RESULT.

DO NOT walk on joists that are lying flat.

DO NOT stack building materials on unbraced joists. Stack only over beams or walls.

WARNING NOTES:

- Lack of proper bracing during construction can result in serious accidents. Observe the following guidelines:
- All blocking, hangers, rim boards and joists at the end supports of the T&J joists must be completely installed and properly nailed.
- Lateral strength, the braced end or an existing deck, must be established at the ends of the bay. This can also be accomplished by a temporary or permanent deck (sheathing) fastened to the first 4 feet of joists at the end of the bay.
- Steady bracing of 1x4 (minimum) must be nailed to a braced end wall or sheathed area (as in note 2) end to each joist.
- Without the bracing, blocking sideways or rollover is highly probable under light construction loads such as a worker or one layer of unnailed sheathing.
- Sheathing must be completely attached to each T&J joist before additional loads can be placed on the system.
- Ends of cantilevers require safety bracing on both the top and bottom flanges.
- The flanges must remain straight within 1/2" from true alignment.

Warning: Drilling, sawing, sanding or machining wood products generates wood dust. The paint and/or coating on this product may contain titanium dioxide. Wood dust and titanium dioxide are substances known to the state of California to cause cancer. For more information on Proposition 65, visit www.cdc.gov/info.

Weyerhaeuser, Microlam, Parallam, TimberStrand, T&J, T&J Joist and Trus Joist are registered trademarks of Weyerhaeuser NR. © 2014 Weyerhaeuser NR Company. All rights reserved.

Jeff Strobl Addition
1922 5th Ave SW
Puyallup, Washington 98371

Weyerhaeuser
ENGINEERED WOOD PRODUCTS
Specification Team
www.weyerhaeuser.com

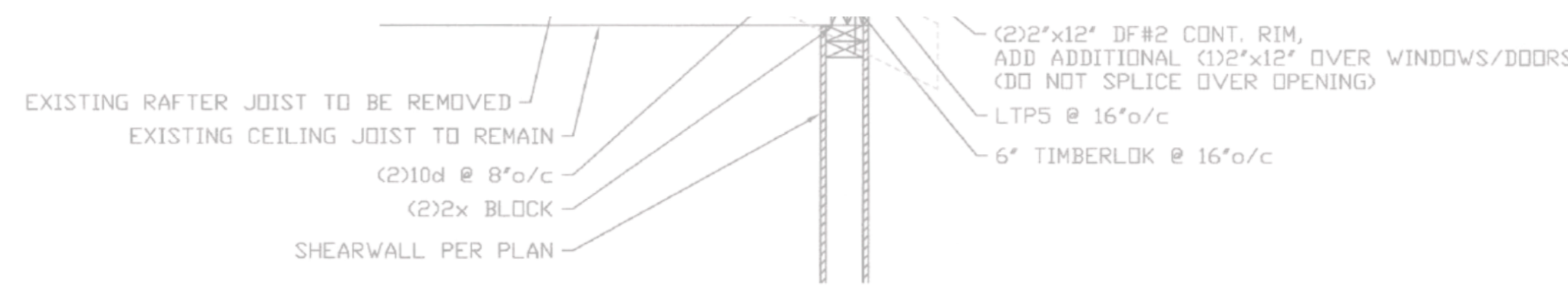
These placement plans for the products specified were based on the information provided to us. This service is intended for product application to circumvent the need for a design professional as determined by the building codes. The designer of record and/or builder/framer is responsible to assure these drawings are compatible with the overall project. Copyright © 2009 Weyerhaeuser NR Company. All rights reserved. Any unauthorized copying or reproduction will constitute an infringement of copyright.

City of Puyallup Development & Permitting Services ISSUED PERMIT

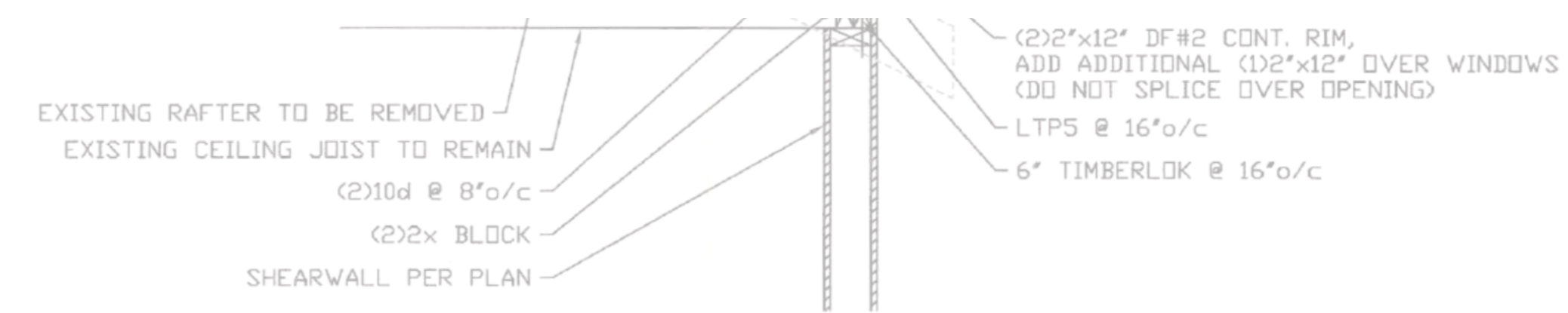
Building Planning
Engineering Public Works
Fire Traffic

N.L. Olson & Associates
Roof Load Duration Factor: 155%
Roof Live Load (PSF): 25
Roof Dead Load (PSF): 15
Floor Live Load (PSF): 40
Floor Dead Load (PSF): 12
Creation Date: 3/9/2021
Architectural Date: 1/20/2021
Structural Date: 12/1/2020
Estimator: Tracy T.
Tracking: R21-23768/SR-292074

February 2014 Reorder TJ-4015



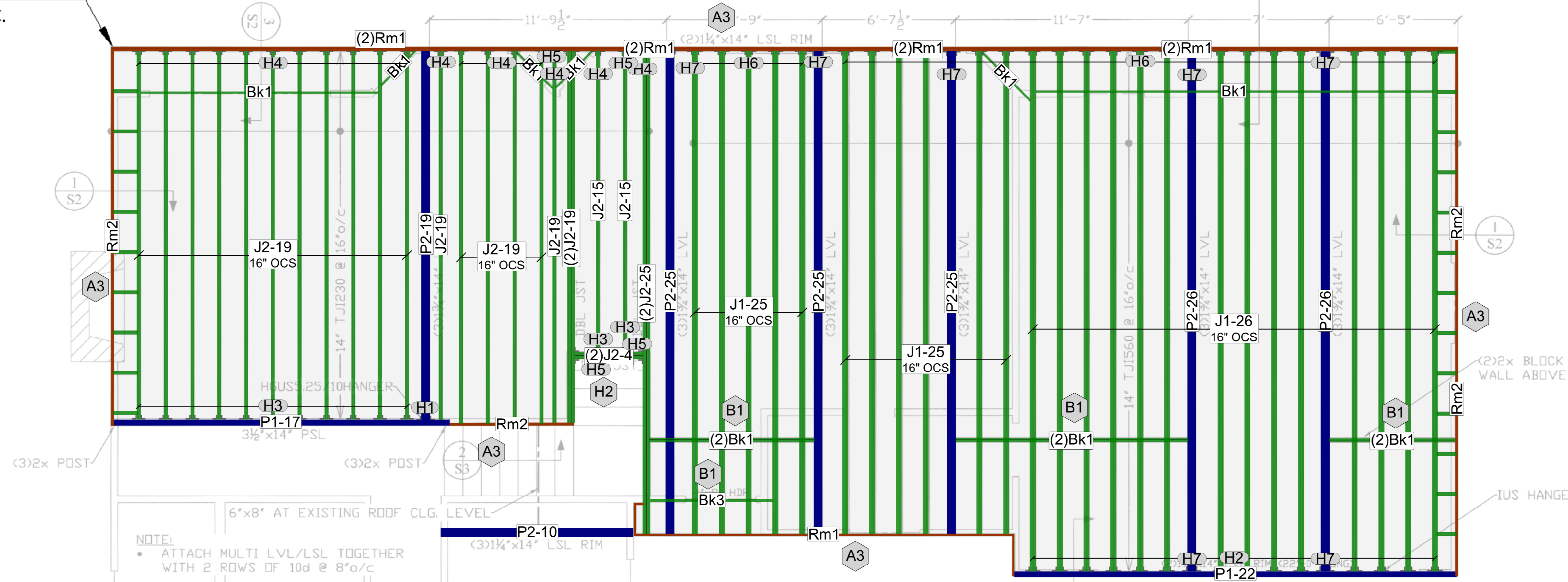
1-FLOOR SECTION 1
3/4"=1'-0"



2-FLOOR SECTION 2
3/4"=1'-0"

Tag	Qty	Product	Len	Cut Logic
Floor Joist				
J1	14	3-1/2"x14" TJ# 560	26'	14x(1/26)
J1	11	3-1/2"x14" TJ# 560	25'	11x(1/25)
J2	22	2-5/8"x14" TJ# 230	25'	22x(1/25)
J2	19	2-5/8"x14" TJ# 230	19'	19x(1/19)
J2	22	2-5/8"x14" TJ# 230	15'	22x(1/15)
J2	22	2-5/8"x14" TJ# 230	4'	22x(1/4)
Floor Joist Blocking				
Bk1	8	1-1/4"x14" TimberStrand® LSL Rim Board 1.3E	R/L	
Bk2	25	2-5/8"x14" TJ# 230	R/L	
Bk3	8	1-3/4"x14" TimberStrand® LSL 1.55E	R/L	
Beam				
P2	25	5-1/4"x14" Parallam® PSL 2.2E	26'	25x(1/26)
P2	35	5-1/4"x14" Parallam® PSL 2.2E	25'	35x(1/25)
P2	15	5-1/4"x14" Parallam® PSL 2.2E	19'	15x(1/19)
P2	15	5-1/4"x14" Parallam® PSL 2.2E	10'	15x(1/10)
P1	13	1-1/2"x14" Parallam® PSL 2.2E	22'	13x(1/22)
P1	13	1-1/2"x14" Parallam® PSL 2.2E	17'	13x(1/17)
Rim				
Rm1	10	1-1/4"x14" TimberStrand® LSL Rim Board 1.3E	16'	10/16
Rm2	4	1-3/4"x14" TimberStrand® LSL 1.55E	16'	4/16
Hanger				
H1	1	HGUS5.25/10 Simpson Strong Tie		
H2	14	US3.56/14 Simpson Strong Tie		
H3	13	US2.37/14 Simpson Strong Tie		
H4	19	MILU3.37/14 Simpson Strong Tie		
H5	4	MILU4.75/14 Simpson Strong Tie		
H6	25	MILU3.56/14 Simpson Strong Tie		
H7	7	HGUS5.50/14 Simpson Strong Tie		
Floor Decking				
	83	23/32"x48" Edge Gold T&G SF		

Start Layout Here
16" O.C.



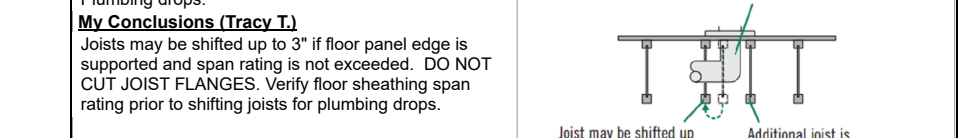
NOTE:
ATTACH MULTI LVL/LSL TOGETHER WITH 2 ROWS OF 10d @ 8'o/c

B-21-0070
CITY OF PUYALLUP

General Notes ** This is FOR YOUR INFORMATION

- LAYOUT MATERIAL LISTS ARE FOR REFERENCE ONLY. A SEPARATE MATERIAL LIST FOR ORDERING PURPOSES MAY BE PROVIDED WHICH WILL REFLECT THE MATERIAL FOR THE ENTIRE PROJECT.
- UNTREATED TRUS-JOIST PRODUCTS ARE INTENDED FOR DRY-USE APPLICATIONS ONLY (REFER TO TRUS-JOIST SPECIFIER GUIDES). WHEN USED FOR EXTERIOR APPLICATIONS, THE CONSTRUCTION MUST BE SUCH THAT DRY SERVICE CONDITIONS ARE MAINTAINED OVER THE ENTIRE SERVICE LIFE OF THE STRUCTURE.
- UNO TRUS-JOIST PRODUCTS ARE SENT LONG. CONTRACTOR TO FIELD CUT AS REQUIRED.
- PLEASE REFER TO STRUCTURAL PAGES FOR ALL FRAMING AND CONSTRUCTION DETAILS. ALSO SEE TRUS-JOIST FRAMERS POCKET GUIDE (FL-8001) FOUND AT www.weyerhaeuser.com FOR RECOMMENDED PRODUCT ASSEMBLY DETAILS. (SPECIFICATION IN THE STRUCTURAL PLANS SUPERSEDES THE DETAILS IN THE FRAMERS POCKET GUIDE WHERE CONFLICTS OCCUR.)
- STANDARD G90 ZINC COATED HANGERS MUST BE ISOLATED FROM TREATED PLATES ETC. WITH VAPOR BARRIER (BY OTHERS). SEE HANGER MANUFACTURER RECOMMENDATIONS. NAILS INTO TREATED PLATE MUST BE HOT-DIPPED GALVANIZED (PER ASTM A153).
- ALL REQUIRED NAILS FOR HANGERS ARE SUPPLIED BY OTHERS. IF HANGERS REQUIRE SDS SCREWS, THEY ARE SUPPLIED BY THE HANGER MANUFACTURER.
- FOLLOW HANGER MANUFACTURER'S PUBLISHED GUIDELINES FOR MAXIMUM QUANTITY OF FASTENERS, SIZE, PLACEMENT AND LENGTH FOR THE SPECIFIC APPLICATION AND MATERIAL USED, UNLESS NOTED OTHERWISE OR INDICATED BY DESIGNER OF RECORD.
- WEYERHAEUSER ASSUMES THAT LOADS FROM PIPE AND SPRINKLER LINE LESS THAN 2" IN DIA. ARE INCLUDED IN SPECIFIED UNIFORM DEAD LOAD AND HAVE BEEN CONSIDERED IN THE DESIGN OF WEYERHAEUSER PRODUCTS BY THE DESIGN PROFESSIONAL OF RECORD.
- WEB STIFFENERS AND FILLERS ARE BY OTHERS UNO.
 - WEB STIFFENERS AND FILLERS ARE BY OTHERS UNO.
 - REFER TO STRUCTURAL DETAILS FOR WEB STIFFENER REQUIREMENTS. IF WEB STIFFENERS ARE REQUIRED FOR HANGERS, IT WILL BE INDICATED ON THE LAYOUT.
 - SOLID BLOCKING AND/OR SQUASH BLOCKS ARE REQUIRED TO PROVIDE VERTICAL LOAD TRANSFER FROM ALL CONCENTRATED LOAD LOCATIONS TO FOUNDATION BELOW.

Plumbing - 3" Joist Shift ** This is FOR YOUR INFORMATION



Hangers - Unspecified ** This is FOR YOUR INFORMATION

The submitted plans do not specify hangers in some or all conditions. Unspecified hangers have been shown as "Connection By Others" in the list. Please verify requirements with the design professional.

Hangers - Verify ** This is FOR YOUR INFORMATION

Some hangers were not specified in submitted documents. Connectors/hangers were placed on layout. Loads and reactions have not been verified. It is the responsibility of the designer of record to verify connections. Designer of Record to review all hanger calcs. that are referenced in the drawings submitted.

Layout - Placement Plan ** This is FOR YOUR INFORMATION

This placement plan has been prepared by Weyerhaeuser to indicate product selection and placement as specified in the design documents provided by others (as referenced in the list). Weyerhaeuser has not verified the design of these products or connections and assumes no responsibility for their suitability. Design analysis per Designer of Record.

Material List Explanation

- Tag: Color, prefix/suffix and number that identifies a product
- Qty: Quantity of product
- Product: Product type and any special attributes
- Len: Length of the product to be shipped
- Cut Logic: A list of which pieces should be cut out of the different shipped lengths of product

Example Below: "1x(1/4 1/8)" use (1) piece of 2x10 at 10' shipped length to cut (1) piece at 4' and (1) piece at 6'.
Next step, "1x(2/3)" use (1) piece of 2x10 at 10' shipped length to cut (2) pieces at 5'

Tag	Qty	Product	Len	Cut Logic
J2	4	2x10 DF #2	10'	1x(1/4 1/8) 1x(2/3)
			10'	2x(1/10)

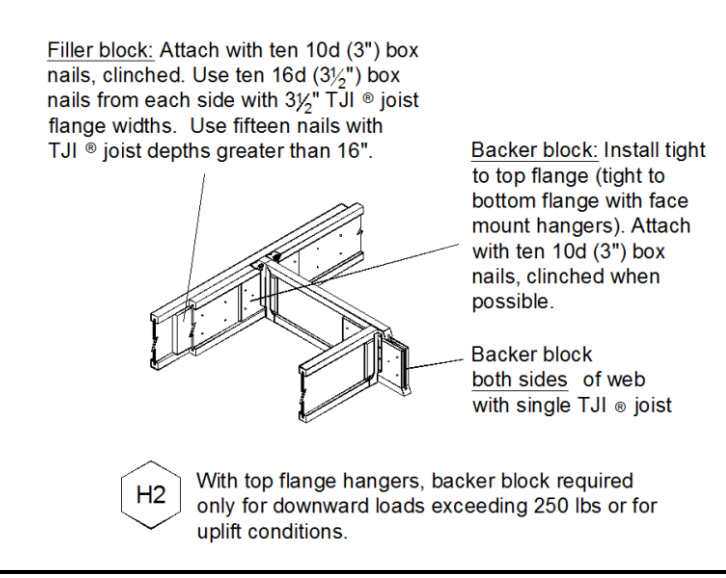
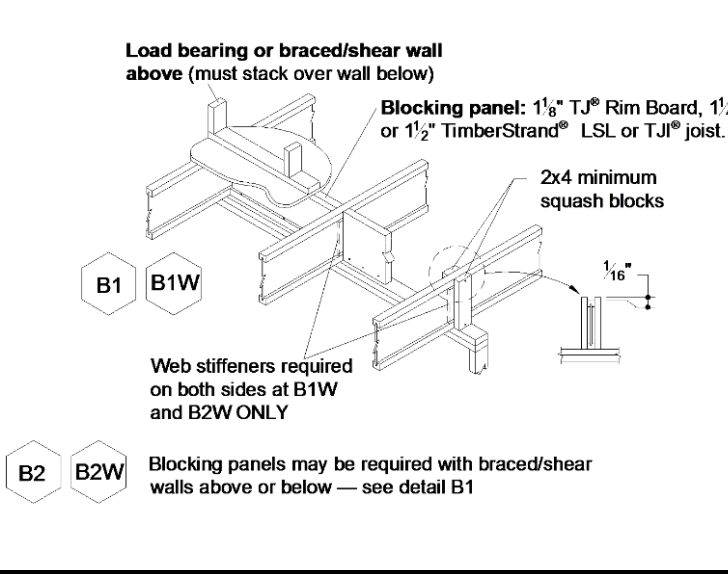
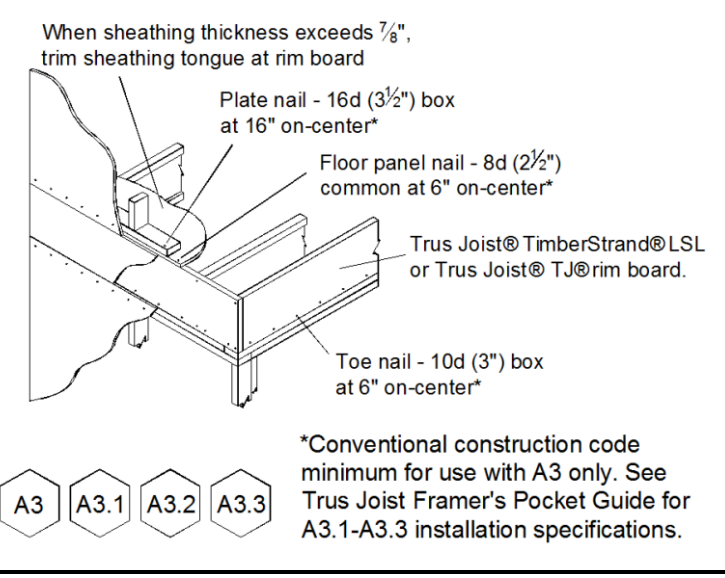
FOR APPROVAL ONLY - NOT FOR CONSTRUCTION

Submittals are reviewed for conformance with the design intent and general compliance with the Contract Documents only.

Approval, comments and/or corrections is an integral part of the Sealed Shop Drawing process. The contractor is responsible for confirming and correlating all quantities, dimensions, tolerances, clearance sequences of construction, compatibility of materials and methods, performance of work in a safe and satisfactory manner and for full compliance with the Contract Documents. Approval of this drawing is needed prior to the issuance of a "For Construction" set of drawings.

___ Approved
___ Approved as Noted
___ Revise and Resubmit

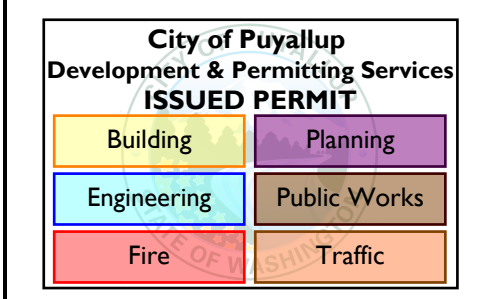
Date: _____ Review By (Please Print): _____ Signature: _____ Firm: _____



Jeff Strobl Addition
1922 5th Ave SW
Puyallup, Washington 98371
Upper Floor Framing

Weyerhaeuser prepared these plans for the specification of Trus Joist products based on project information provided to us. This service is solely intended for product application assurance, and is not intended to circumvent the need for a design professional as determined by the building codes. The designer of record and/or builder/framer is responsible to assure these drawings are compatible with the overall project. Copyright 2009 Weyerhaeuser NR Company. All rights reserved. Unauthorized copying or reproduction will constitute an infringement of copyright.

These placement plans for the products specified were based on the information provided to us. This service is solely intended for product application assurance. It is not intended to circumvent the need for a design professional as determined by the building codes. The designer of record and/or builder/framer is responsible to assure these drawings are compatible with the overall project.



N.L. Olson & Associates

Roof Load Duration Factor:	15%
Roof Live Load (PSF):	25
Roof Dead Load (PSF):	15
Floor Load Deflection Criteria:	L/480
Floor Live Load (PSF):	40
Floor Dead Load (PSF):	12
Creation Date:	3/9/2021
Architectural Date:	1/20/2021
Structural Date:	12/1/2020
Estimator:	Tracy T.
Tracking:	R21-23768/SR-292074

Sheet 2 of 2