

City of Puyallup
Development & Permitting Services
ISSUED PERMIT

Building	Planning
Engineering	Public Works
Fire	Traffic

GOOD SAMARITAN HOSPITAL

ONE FOREST

1ST FLOOR START ROOM ASI #2

Fire Alarm and Detection System



City of Puyallup
Fire
REVIEWED FOR COMPLIANCE

DDrake
02/09/2022
8:06:17 AM



THE APPROVED CONSTRUCTION PLANS AND ALL ENGINEERING MUST BE POSTED ON THE JOB AT ALL INSPECTIONS IN A VISIBLE AND READILY ACCESSIBLE LOCATION.

Approval of submitted plans is not an approval of omissions or oversight by this office or noncompliance with any applicable regulations of local government. The contractor is responsible for making sure that the building complies with all applicable building codes and regulations of the local government.

Project Team Contact Information

Sales Representative:	Darrell Harris	darrell.harris@jci.com	(206) 735-5723
Project Engineer:	James Beesley	james.beesley@jci.com	(206) 777-4827
Project Coordinator:	So'o Kobayashi	soo.kobayashi@jci.com	(206) 777-4853
Technician Scheduler:	Yvonne Thompson	yvonne.thompson@jci.com	(206) 777-4860

DRAWING LIST

NO.	DATE	REVISION DESCRIPTION	DRAFTER	ENGINEER	PROJECT #
28	8/16/19	GSH 2 RIVER 3RD FLR DAY ROOM - REC. DWGS	SSS		612534326
29	10/21/19	GSH 1 FOREST 1ST FLR START ROOMS	MAM	JWB	614633427
30	3/19/21	NODE 2 FACP UPGRADE - RECORD DRAWINGS	JFJ		612476312
31	8/13/21	GSH 1 FOREST 1ST FLR START ROOMS C/O#1	MAM	JWB	614633427
32	11/30/21	GSH 1 FOREST 1ST FLR START ROOMS C/O#2	MAM	JWB	614633427
32	12/08/21	GSH 1 FOREST 1ST FLR START ROOMS ASI#2	PF	JWB	614633427

SHEET NAME	DRAWING NAME	ELECTRONIC DRAWING NAME	INCLUDED IN THIS PROJECT
FA-COV-01	TITLE SHEET	FA-COV	X
FA-COV-02	COVER SHEET	FA-COV	X
FA-COV-03	COVER SHEET	FA-COV	
FA-RIS-01	RISER SHEET	FA-COV	
FA-DET-01	DETAIL SHEET	FA-COV	X
FA-DET-02	DETAIL SHEET	FA-COV	X
FA-DET-03	DETAIL SHEET	FA-COV	
FA-DET-04	DETAIL SHEET	FA-COV	X
FA-DET-05	DETAIL SHEET	FA-COV	
FA-DET-06	DETAIL SHEET	FA-COV	
FA-DET-07	DETAIL SHEET	FA-COV	
FA-DET-08	DETAIL SHEET	FA-COV	
FA-CAL-01	DETAIL SHEET	FA-COV	X
FA-CAL-02	DETAIL SHEET	FA-COV	X
FA-CAL-03	DETAIL SHEET	FA-COV	
FA-G-01	GROUND FLOOR	FA-G-01	
FA-G-02	GROUND FLOOR	FA-G-01	
FA-G-03	GROUND FLOOR	FA-G-01	
FA-G-04	GROUND FLOOR	FA-G-01	
FA-F-01N	FIRST FLOOR NORTH WING	FA-F-01	X
FA-F-01S	FIRST FLOOR SOUTH WING	FA-F-01	
FA-F-01E	FIRST FLOOR EAST WING	FA-F-01	X
FA-F-02E	SECOND FLOOR EAST WING	FA-F-02	
FA-F-02N	SECOND FLOOR NORTH WING	FA-F-02	
FA-F-02SW	SECOND FLOOR EAST WING SW	FA-F-02	
FA-F-03N	PARTIAL 3RD FLOOR NORTH WING	FA-F-03	
FA-F-03S	3RD FLOOR INTERM RENOVATIONS	FA-F-03	
FA-F-04N	4TH FLOOR NORTH	FA-F-04	
FA-F-04S	4TH FLOOR SOUTH	FA-F-04	
FA-F-05	PARTIAL 5TH FLOOR PLAN	FA-F-05	
FA-R-01	ROOF NORTH WING	FA-R-01	
FA-P-01	PENTHOUSE FLOOR PLAN	FA-PENTHOUSE	
FA-P-02	WEST PENTHOUSE (OLD) FLOOR PLAN	FA-PENTHOUSE	



8520 10th Avenue S, Suite 100
Seattle, WA 98108
SALES: 206-281-1400
OFFICE: 206-281-1500
FAX: 206-281-1500

NO.	DATE	REVISION DESCRIPTION	DRAFTER	ENGINEER	PROJECT #
28	8/16/19	GSH 2 RIVER 3RD FLR DAY ROOM - REC. DWGS	SSS		612534326
29	10/21/19	GSH 1 FOREST 1ST FLR START ROOMS	MAM	JWB	614633427
30	3/19/21	NODE 2 FACP UPGRADE - RECORD DRAWINGS	JFJ		612476312
31	8/13/21	GSH 1 FOREST 1ST FLR START ROOMS C/O#1	MAM	JWB	614633427
32	11/30/21	GSH 1 FOREST 1ST FLR START ROOMS C/O#2	MAM	JWB	614633427
32	12/08/21	GSH 1 FOREST 1ST FLR START ROOMS ASI#2	PF	JWB	614633427

DRAWINGS REVIEWED BY:
Chad McCammon, SET
NICET #09810
Fire Alarm Systems, Level IV

FIRE ALARM SYSTEM
TITLE SHEET
GOOD SAMARITAN HOSPITAL
EAST/NORTH WING
407 14TH AVENUE
PUYALLUP, WA

APPROVED BY: EP
DRAWN BY: JCP
DATE: 6-21-2001
SITE NUMBER: 459
SHEET NUMBER: FA-COV-01

GENERAL FIRE ALARM SYSTEM NOTES

- FIRE ALARM SYSTEM IS POWER LIMITED. METALLIC RACEWAY SHALL BE USED IF REQUIRED BY CODE, SPECIFICATIONS AND CONTRACT DOCUMENTS OR A.H.I.
- ALL RACEWAYS MUST BE FREE OF MOISTURE
- REFER TO JOHNSON CONTROLS FIRE ALARM DATA SHEETS FOR PROPER TYPE AND SIZES OF REQUIRED DEVICE MOUNTING ELECTRICAL BOXES. ELECTRICAL CONTRACTOR IS RESPONSIBLE FOR PROPER INSTALLATION OF ALL DEVICES.
- AC VOLTAGE IS NOT PERMITTED IN THE SAME RACEWAY AS FIRE ALARM WIRING.
- UNRELATED (NON-FIRE ALARM) WIRING SHALL NOT BE IN THE SAME RACEWAY AS FIRE ALARM WIRING.
- ALL CONTRACTOR FIELD WIRING MUST ENTER ALARM CONTROL PANEL BACKBOX FOLLOWING POWER-LIMITED AND NON POWER-LIMITED WIRING REQUIREMENTS. REFER TO INSTALLATION INSTRUCTIONS FOR MORE INFORMATION.
- ZONE CIRCUITS AND SIGNAL CIRCUITS ARE ELECTRICALLY SUPERVISED. BRANCH CIRCUITS SHALL BE LOOPED TO MAINTAIN INTEGRITY OF SUPERVISED CIRCUITS--TAPPING OF ZONE CIRCUITS AND SIGNAL CIRCUITS IS NOT PERMITTED.
- REFER TO FACP MODULE DIAGRAMS, INCLUDED WITH FACP, FOR SPECIFICATIONS AND INFORMATION ON INDIVIDUAL PANEL MODULES. VERIFY ALL CONNECTIONS WITH A JOHNSON CONTROLS FIELD TECHNICAL REPRESENTATIVE PRIOR TO TERMINATION.
- ALL FIRE ALARM WIRING SHALL TEST FREE OF OPENS, SHORTS AND GROUNDS.
- ALL WIRING SHALL BE LABELED AND TAGGED
- ELECTRICAL CONTRACTOR IS RESPONSIBLE FOR INSTALLATION AND MAKING ALL FINAL CONNECTIONS PRIOR TO JOB CHECKOUT AND FINAL TESTING BY A JOHNSON CONTROLS FIELD TECHNICAL REPRESENTATIVE. CALL A MINIMUM OF 5 DAYS IN ADVANCE TO SCHEDULE A JOHNSON CONTROLS TECHNICIAN AT (206) 777-4860.
- ELECTRICAL CONTRACTOR IS RESPONSIBLE FOR MAKING ALL ARRANGEMENTS FOR INSPECTION, TEST AND CERTIFICATION OF THE FIRE ALARM SYSTEM BY ALL APPROPRIATE AUTHORITIES.
- UPON WRITTEN REQUEST, JOHNSON CONTROLS WILL PROVIDE WRITTEN INSTRUCTIONS REGARDING THE APPROPRIATE WIRE/CABLE FOR INSTALLATION OF THE EQUIPMENT(SYSTEMS) IDENTIFIED IN THESE DRAWINGS. JOHNSON CONTROLS SHALL NOT BE RESPONSIBLE FOR PROBLEMS OR DAMAGES RESULTING FROM THE USE OF WIRE/CABLE OTHER THAN THAT WHICH HAS BEEN IDENTIFIED IN WRITING BY JOHNSON CONTROLS FOR A SPECIFIC APPLICATION.
- ALL WIRING SHALL MEET ALL APPLICABLE NATIONAL ELECTRIC CODE ARTICLES FOR FIRE ALARM AND LOW VOLTAGE WIRING.

T.I. ARCHITECT: CLARK KJOS ARCHITECTS, LLC
PORTLAND, OR

T.I. FIRE ALARM SYSTEM DESIGNED BY: JOHNSON CONTROLS
SEATTLE, WA

T.I. FIRE ALARM SYSTEM INSTALLED BY: PRECISION ELECTRIC
REDMOND, WA

EQUIPMENT FOR FIRE ALARM SYSTEM SUPPLIED BY: JOHNSON CONTROLS
SEATTLE, WA

WASHINGTON STATE ELECTRICAL CONTRACTORS NUMBER: JOHNSCP831PR

* THESE DRAWINGS DO NOT SUPERSEDE THE CONTRACT DRAWINGS AND SPECIFICATIONS. THEY ARE INTENDED AS A SUPPLEMENT ONLY AND MUST BE USED IN CONJUNCTION WITH THE CONTRACT DOCUMENTS. THEY DO NOT MODIFY THE CONTRACTORS OBLIGATIONS TO CONFORM TO THE PROJECTS ORIGINAL DESIGN CRITERIA.

SCOPE OF WORK:

MODIFY SYSTEM FOR TENANT IMPROVEMENT ON LEVEL 1. INSTALL WEATHER PROOF STROBE IN NEW PUBLIC RESTROOM.
ADD NEW RELAY FOR HVAC SHUTDOWN. CONNECT NEW DEVICES TO FIRE SYSTEM AS SHOWN ON SHEET FA-F-01.

ELECTRICAL CONTRACTOR ASBUILTS

- ELECTRICAL CONTRACTOR IS RESPONSIBLE FOR PROVIDING JOHNSON CONTROLS WITH ACCURATE REDLINED DRAWINGS. DRAWINGS SHALL BE REDLINED AS NECESSARY TO SHOW THE FOLLOWING:

- DEVICE LOCATIONS - ADDS/DELETES.
- CIRCUIT NUMBERS - ADDRESSABLE/SIGNAL/AUXILIARY/ZONE.
- WIRE/CONDUIT - ACCURATE ROUTING.
- WIRE FILL - USING WIRE CODE.
- EOL RESISTOR LOCATIONS.

JOHNSON CONTROLS WILL PROVIDE (UPON REQUEST) A BLANK SET OF FLOOR PLANS TO BE REDLINED. JOHNSON CONTROLS WILL INCORPORATE ALL REDLINED CHANGES INTO THE RECORD AUTOCAD SET OF DRAWINGS.

ELECTRICAL CONTRACTOR

- ELECTRICAL CONTRACTOR IS TO SCHEDULE A PRELIMINARY SITE MEETING WITH A JOHNSON CONTROLS TECHNICAL REPRESENTATIVE. THESE MEETINGS ARE FOR REVIEWING EQUIPMENT LISTS, INSTALLATION PROCEDURES, AND PROVIDING ANSWERS TO QUESTIONS RELATIVE TO SYSTEM INSTALLATION.

- PLEASE ALLOW A MINIMUM OF FIVE WORKING DAYS ADVANCE NOTICE TO SCHEDULE A TECHNICAL REPRESENTATIVE.

- TO SCHEDULE A MEETING PLEASE CONTACT OUR SERVICE DEPARTMENT AT (206) 777-4860.

- DO NOT USE FIRE ALARM CABINET AS TERMINAL CABINET

MONITORING COMPANY

NORTHWEST AMS
1-877-870-0910

SERVICE COMPANY

SUTHERLAND SECURITY
3991 TANWAX CT. E.
EATONVILLE, WA. 98328

BATTERY CALCULATIONS - Miniplex Transponder 2nd Flr Electrical Rm R281

Does the system have an Emergency Generator that meets NEC 700.017?
___yes ___X no

How many hours of battery standby are required?
___X_4 ___24 ___48 ___60 (4 hours minimum w/ Emergency Generators)

Qty	Part #	Description	Standby Current (A)	Total Standby (A)	Alarm Current (A)	Alarm (A)	Total Alarm (A)
1	4100-8019	Miniplex Transponder	0.3450	0.3450	0.6650	0.6650	
1	4100-3102	Magnet Card	0.0000	0.2550	0.0000	0.2750	
4	2088-9608	Door Holder	0.0150	0.0600	1.6650	6.6600	
3	2190-9163	Control ZAM	0.0100	0.0300	0.0400	0.1200	
4	4098-9756	Duct Detector	0.0024	0.0096	0.0300	0.1200	
5	2088-9008	Relay	0.0000	0.0000	0.0150	0.0750	
1		Total Notification Current from Volt Drop	0.0000	0.0000	4.9190	4.9190	
			Total Standby=	0.6996	Total Alarm=	12.8340	
			Total Standby Current Required=	0.6996	X	Time (Hrs)	2.7984
			Total Alarm Current Required=	12.8340	X		3.2085
			Total=				6.0069
			20% Depletion Factor=				1.2014
			Total Amp/Hour Required=				7.2083
			Total Amp/Hour Batteries Provided=			(1) set	18.0000

0.067	4904-9331	Strobe 15cd
0.229	4904-9333	Strobe 110cd
0.075	4906-9154	Ceiling Speaker/Strobe 15cd
0.125	4906-9154	Ceiling Speaker/Strobe 30cd
0.233	4906-9154	Ceiling Speaker/Strobe 75cd
0.316	4906-9154	Ceiling Speaker/Strobe 110cd
0.067	4903-9356	Wall Speaker/Strobe 15cd
0.177	4903-9357	Wall Speaker/Strobe 75cd
0.067	4906-9151	MC Wall Speaker/Strobe 15cd
0.177	4906-9151	MC Wall Speaker/Strobe 75cd
0.030	4905-9838	Sync. Module
0.100		Solenoid

Signal Circuits - Miniplex Transponder	Current	Dist. (ft)	Voltage Drop
1 SIG27) ER Area	1.446	500	4.61
1 SIG28) 3rd Floor Interim	0.633	430	1.74
1 SIG29) 2nd Floor Imaging Dept. Reading	0.201	275	0.35
1 SIG30) 2nd Floor West Stat Lab	0.631	255	1.03
1 SIG31) Spare	0.000	0.00	0.00
1 SIG32) Spare	0.000	0.00	0.00
1 SIG33) 2nd Floor Praction	0.100	170	0.11
1 SIG34) 5th Floor Praction	0.130	200	0.17
1 SIG35) Spare	0.000	0.00	0.00
1 SIG36) Spare	0.000	0.00	0.00
1 SIG37) 2nd Floor Physician's Lounge	0.624	300	1.19
1 SIG39) 5th Floor Strobes	1.154	300	2.21
1 SIG40) Spare	0.000	0.00	0.00
1 SIG41) Spare	0.000	0.00	0.00
1 SIG42) Spare	0.000	0.00	0.00
1 SIG43) Spare	0.000	0.00	0.00
1 SIG44) Spare	0.000	0.00	0.00
7 1 0 0 0 0 11 8 0 0 2 0	Total	4.919	

NOTE:
-TAP ALL SPEAKERS AT 1/2 WATT.

SEQUENCE OF OPERATION

	SMOKE DETECTION	DUCT SMOKE DETECTION	SYSTEM TROUBLE	IMAGING SMOKE DETECTION	DUCT SMOKE DETECTION	NUTRITION SERVICES	FSD INCORRECT POSITION
ACTIVATION OF LOCAL ALARM AT FACP (LCD DISP. & AUDIBLE INDICATION)	X			X			
ACTIVATE AUDIBLE/VISIBLE DEVICES	X			X			
ACTIVATE LOCAL FAN SHUTDOWN	X	X		X	X		
RELEASE DOOR HOLDERS	X			X			
TRANSMIT ALARM SIGNAL TO CENTRAL STATION MONITOR VIA MAIN FACP	X			X			
TROUBLE INDICATION AT FACP			X				X
TROUBLE INDICATION AT ANNUNCIATOR			X				X
TRANSMIT TROUBLE SIGNAL TO CENTRAL STATION MONITOR VIA MAIN FACP			X				X
SUPPRESSION RELEASE				X			
CLOSE FSD - NUTRITION SERVICES SHUTDOWN AHU-1 SUPPLY/EXHAUST(14-121/122)						X	
SUPERVISORY INDICATION AT FACP		X			X		
SUPERVISORY INDICATION AT ANNUNCIATOR		X			X		
TRANSMIT SUPERVISORY SIGNAL TO CENTRAL STATION MONITOR VIA MAIN FACP		X			X		

TRANSPONDER PANEL #1

STROBE CIRCUITS
27) SECOND FLOOR NORTH EAST WING
28) THIRD FLOOR SOUTH WING
29) 2ND FLOOR IMAGING DEPT READING AREA
30) FLOOR 2 SOUTH WING
31) FLOOR 2 EAST WING NUC MED
32) FLOOR 2 ATU
33) PRE-ACTION SUPPRESSION RELEASE
34) FLOOR 5 UPS ROOM PRE-ACTION
35-38) SPARE
39) FLOOR 5 STROBES
40-44) SPARE

AUXILIARY CIRCUITS
19-26) SPARE

MAPNET CHANNELS
MAPNET CHANNEL #5
5-4 TO 5-6, 5-8 TO 5-23, 6-27, 5-31, 5-32
5-33 TO 5-54, 5-65, 5-70 TO 5-90
5-91 TO 5-96, 5-100 TO 5-122
MAPNET CHANNEL #6
6-1 TO 6-48, 6-70 TO 6-93
MAPNET CHANNEL #8
8-1 TO 8-4

WIRE CODE

ALL WIRING TO MEET CURRENT NATIONAL ELECTRIC CODE ARTICLE 760, 300, 310, 370, 725 AND ALL RELATED SECTION CODE REQUIREMENTS

LETTER	QTY	COLOR/TYPE	SIZE	FUNCTION
A	2	ORANGE/BLACK THHN	16	ZONE
C	2	RED/BLUE THHN	14	STROBE
D	4	RED/BLUE THHN	14	STROBE LOOP
E	2	BROWN/YEL THHN	14	DOOR HOLDER
F	2	ORANGE/BLUE THHN	14	FAN SHUTDOWN
J	1	TW/SHLD. PAIR	14	SPEAKER
K	2	TW/SHLD. PAIR	14	SPEAKER LOOP
M	2	WESTPENN D975	18	TRANSPONDER COMM.
	2	TW/SHLD. PAIR	14	AUDIO RISER
	2	RED/BLACK THHN	14	
P	2	RED/BLACK THHN	14	24VDC POWER
R	4	BLUE/WHITE THHN	16	REMOTE LED w/ TEST
S	2	RED/BLUE THHN	16	SUP. RELEASING CIRCUIT
X	1	WEST PENN D975	18	ADDR. MAPNET DATA LINE

NOTES:
TAG AND IDENTIFY ALL SIGNAL CIRCUIT WIRES WITH SIGNAL CIRCUIT NUMBER.

LEGEND

SYMBOL	DESCRIPTION	MODEL #	BACKBOX#
[SPEAKER]	SPEAKER/STROBE 15cd * SUBSCRIPT INDICATES CIRCUIT #	4903-9356	4" SQ 2 1/8" DEEP W/ 1.5" EXT BY EC
[SPEAKER]	SPEAKER/STROBE 75cd * SUBSCRIPT INDICATES CIRCUIT #	4903-9357	4" SQ 2 1/8" DEEP W/ 1.5" EXT BY EC
[SPEAKER]	SPEAKER/STROBE MULTICANDELA * SUBSCRIPT INDICATES CIRCUIT # & CANDELA SETTING	4906-9151	4" SQ 2 1/8" DEEP W/ 1.5" EXT BY EC
[SPEAKER]	SPEAKER/STROBE 30cd * SUBSCRIPT INDICATES CIRCUIT # & CANDELA SETTING	4903-9197	4" SQ 2 1/4" DEEP W/ 1.5" EXT BY EC
[STROBE]	STROBE 15cd * SUBSCRIPT INDICATES CIRCUIT #	4904-9331	4" SQ 1 1/2" DEEP BY EC
[STROBE]	STROBE 75cd * SUBSCRIPT INDICATES CIRCUIT #	4904-9332	4" SQ 1 1/2" DEEP BY EC
[STROBE]	STROBE 110cd * SUBSCRIPT INDICATES CIRCUIT #	4904-9333	4" SQ 1 1/2" DEEP BY EC
[STROBE]	STROBE MULTICANDELA * SUBSCRIPT INDICATES CIRCUIT # & CANDELA SETTING	4906-9101	4" SQ BY EC
[SPEAKER]	SPEAKER/STROBE MULTICANDELA * SUBSCRIPT INDICATES CIRCUIT # & CANDELA SETTING	4906-9153	4" SQ 2 1/8" DEEP W/ 1.5" EXT BY EC
[CEILING]	CEILING SPEAKER/STROBE * SUBSCRIPT INDICATES CIRCUIT # & CANDELA SETTING	4906-9154	4" SQ 2 1/8" DEEP W/ 1.5" EXT BY EC
[CEILING]	CEILING STROBE, WHITE, MC * SUBSCRIPT INDICATES CIRCUIT # & CANDELA SETTING	4906-9104	SG BY EC
[SPEAKER]	CEILING SPEAKER * SUBSCRIPT INDICATES CIRCUIT #	4902-9721	4" SQ 2 1/2" DEEP W/ 1.5" EXT BY EC
[SOLENOID]	EXISTING SOLENOID	EXISTING	EXISTING
[SWITCH]	EXISTING WATERFLOW SWITCH	EXISTING	EXISTING
[SWITCH]	EXISTING TAMPER SWITCH	EXISTING	EXISTING
[SWITCH]	EXISTING LOW AIR SWITCH	EXISTING	EXISTING
[SWITCH]	MAINTENANCE DISCONNECT SWITCH	2080-9060	2-GANG 2 3/4" DEEP BY EC
[SOLENOID]	COIL SUPERVISION MODULE	2081-9046	SOLENOID J-BOX
[CUBE]	SYNC CUBE	4905-9914	4" SQ 1 1/2" DEEP BY EC
[MODULE]	SMART SYNC CONTROL MODULE	4905-9938	4" SQ 2 1/8" DEEP W/ 1.5" EXT BY EC
[STATION]	ADDRESSABLE MANUAL STATION * SUBSCRIPT INDICATES MAPNET#	4099-9001	4" SQ W/SG BY EC
[STATION]	ADDRESSABLE MANUAL STATION * SUBSCRIPT INDICATES MAPNET#	4099-9004	4" SQ W/SG BY EC
[SENSOR]	SMOKE SENSOR AND BASE * SUBSCRIPT INDICATES MAPNET#	4098-9714	SENSOR 4" OCT BY EC
[SENSOR]	SMOKE SENSOR w/LED OUTPUT BASE * SUBSCRIPT INDICATES MAPNET#	4098-9714	SENSOR 4" OCT BY EC
[SENSOR]	HEAT SENSOR AND BASE * SUBSCRIPT INDICATES MAPNET#	4098-9733	SENSOR 4" OCT BY EC
[SENSOR]	DUCT DETECTOR * SUBSCRIPT INDICATES MAPNET#	4098-9756	SELF-CONTAINED
[SENSOR]	IN-DUCT DETECTOR * SUBSCRIPT INDICATES MAPNET#	4098-9751	W/ SELF-CONTAINED
[TEST]	REMOTE LED w/ TEST	2098-9806	SG BY EC
[TEST]	REMOTE LED w/ TEST	4098-9834	SG BY EC
[SENSOR]	XAD DUCT SENSOR * SUBSCRIPT INDICATES DEVICE ADDRESS	4098-XAD-110 W/	12.625"H X 10.1875"W X 6.5"D
[RELAY]	DUCT DETECTOR RELAY	4098-9843	4" SQ 2 1/8" DEEP W/ COVER BY EC
[RELAY]	REMOTE RELAY	2088-9010	SELF-CONTAINED
[RELAY]	MR 101/C RELAY	2088-9008	SELF-CONTAINED
[MODULE]	INDIVIDUAL ADDRESSABLE MODULE	4090-9001	SINGLE GANG 2 1/2" DEEP BY EC
[IAM]	ADDRESSABLE SIGNAL IAM	4090-9007	4" SQ 2 1/8" DEEP BY EC
[IAM]	DUAL CONTACT RELAY IAM	4090-9008	4" SQ 2 1/8" DEEP BY EC
[IAM]	RELAY IAM	4090-9002	4" SQ 2 1/8" DEEP BY EC
[IAM]	B AMP RELAY IAM	4090-9010	4" SQ 2 1/8" DEEP BY EC
[DAMPER]	SMOKE/FIRE DAMPER	BY OTHERS	BY OTHERS
[ZAM]	CONTROL ZAM * SUBSCRIPT INDICATES MAPNET#	2190-9163	4" SQ 2 1/2" DEEP W/ 1.5" EXT BY EC
[ZAM]	SIGNAL ZAM * SUBSCRIPT INDICATES MAPNET#	2190-9161	4.11/16" BY 2 1/8" DEEP EXT BY EC
[DOOR]	DOOR HOLDER	2088-9608	SG BY EC
[J-BOX]	J-BOX	PROVIDED BY EC	
[MODULE]	SYNC MODULE	4905-9938	4" SQ 2 1/8" DEEP BY EC BY EC
[MODULE]	J-BOX	PROVIDED BY EC	
[TRANSPONDER]	MINIPLX TRANSPONDER	4100	52.125"H X 25.75"W X 6.75"D
[TRANSPONDER]	4100U TRANSPONDER	4100-9600	56"H X 24"W X 8.375"D
[PWR]	ALTRONIC PWR SUPPLY	AL1024ULACMOBJ	BY OTHERS
[RADIO]	AES RADIO	7788F-UPL	BY OTHERS
[IAM]	SUPERVISED IAM	4090-9001	4" SQ 2 1/8" DEEP BY EC
[PANEL]	NAC PANEL	4009-9201	13.5"H X 16.5"W X 3"D
[PANEL]	FIRE ALARM CONTROL PANEL	4100-9111	EXISTING

City of Puyallup
Development & Permitting Services
ISSUED PERMIT

Building	Planning
Engineering	Public Works
Fire	Traffic



8520 10th Avenue S, Suite 1100
Seattle, WA 98108
SALES: 206-281-1400
FAX: 206-281-1500

PROJECT #	ENGINEER	DRAWER	REVISION	DESCRIPTION	DATE	NO.
612534326	JWB	SSS	1	3RD RIVER 3RD FLR DAY ROOM - REC. DWGS	8/16/19	29
614633427	JWB	MAM	2	OSH 1 FOREST 1ST FLR START ROOMS	10/21/19	30
614633427	JWB	JEJ	3	NODE 2 FACP UPGRADE - RECORD DRAWINGS	3/19/21	31
614633427	JWB	MAM	4	OSH 1 FOREST 1ST FLR START ROOMS C/O#1	8/3/21	32
614633427	JWB	MAM	5	OSH 1 FOREST 1ST FLR START ROOMS C/O#2	11/30/21	33
614633427	JWB	PF	6	OSH 1 FOREST 1ST FLR START ROOMS ASH#2	12/08/21	34

DRAWINGS REVIEWED BY:
Chad McCannon, SET
NCEET #09930
Fire Alarm Systems, Level IV

FIRE ALARM SYSTEM COVER SHEET
GOOD SAMARITAN HOSPITAL
EAST/NORTH WING
407 14TH AVENUE
PUYALLUP, WA

APPROVED BY: [Signature]
DRAWN BY: JWP
DATE: 6-21-2001
SITE NUMBER: 459
SHEET NUMBER: FA-COV-02

TrueAlert™ NON-ADDRESSABLE SmartSync™ VISIBLE NOTIFICATION APPLIANCES

PRODUCT INFORMATION

FEATURES:

- CLASS B (STYLE Y) OPERATION REQUIRES CONNECTION TO A COMPATIBLE JOHNSON CONTROLS SMARTSYNC NAC OR TO SMARTSYNC CONTROL MODULE (SCM) 4905-9938
- CLASS A (STYLE Z) OPERATION IS SUPPORTED BY USING THE 4905-9938 SCM

SPECIFICATIONS:

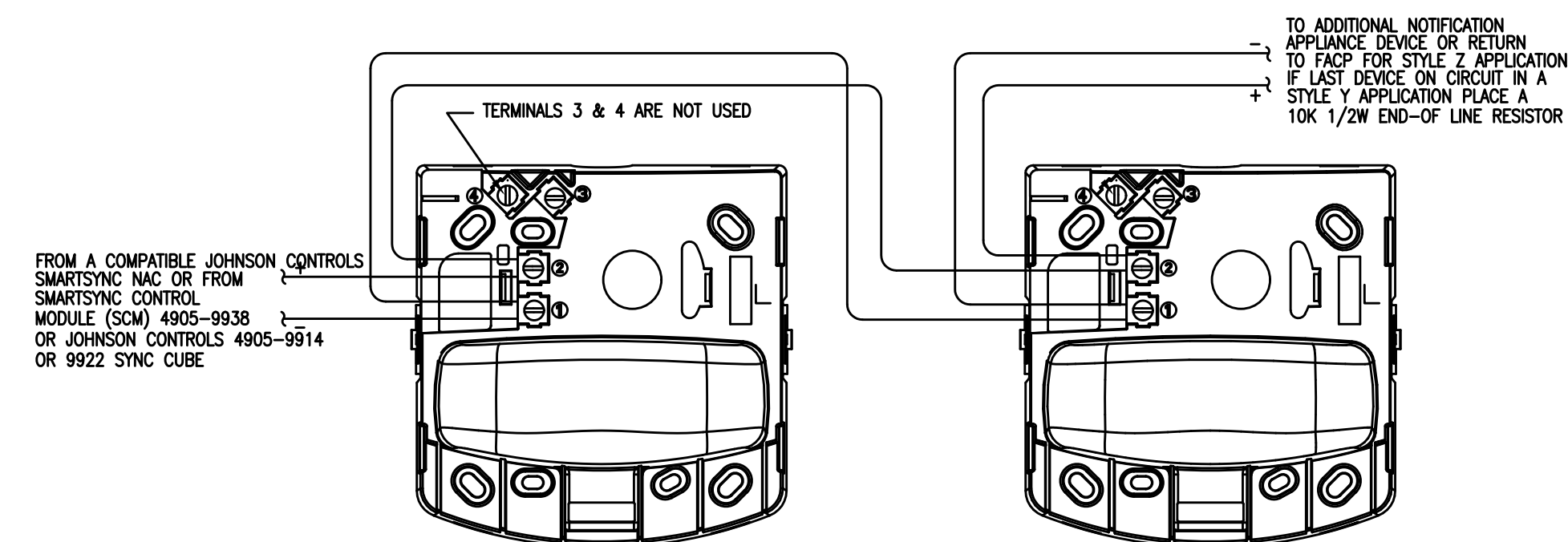
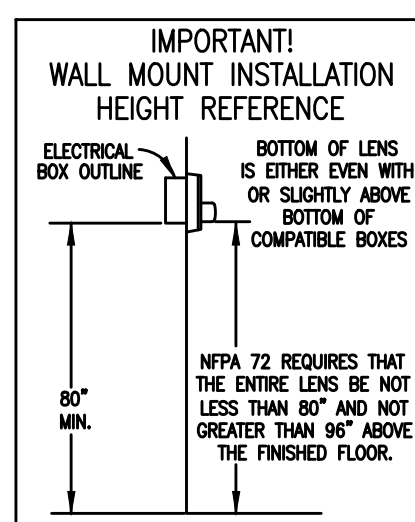
- HOUSING DIMENSIONS (INCLUDING LENS): 5 1/8" H X 5" W X 2 3/4" D (130 MM X 127 MM X 70 MM)
- TEMPERATURE RANGE: 32° F TO 122° F (0° TO 50° C)
- HUMIDITY RANGE: 10% TO 93% NON-CONDENSING AT 100° F (38° C)
- CONNECTION: TERMINALS FOR #18 AWG TO #12 AWG

STROBE

- RATED VOLTAGE RANGE: 16 TO 33 VDC
- FLASH RATE: 1Hz
- SYNCHRONIZED NAC LOADING: UP TO 35 SYNCHRONIZED STROBES MAXIMUM PER NAC

*CURRENT DRAWS REFLECT STROBE FLASHING

MODEL NUMBER	HOUSING COLOR	LETTERING COLOR	STROBE RATING	16 VDC	17 VDC	18 VDC	19 VDC	20 VDC	24 VDC
4904-9331	RED	WHITE	15cd	63 mA	59 mA	56 mA	53 mA	50 mA	42 mA
4904-9332	RED	WHITE	75cd	199 mA	187 mA	177 mA	168 mA	159 mA	133 mA
4904-9333	RED	WHITE	110cd	253 mA	238 mA	225 mA	213 mA	202 mA	169 mA
4904-9342	WHITE	RED	15cd	63 mA	59 mA	56 mA	53 mA	50 mA	42 mA
4904-9343	WHITE	RED	75cd	199 mA	187 mA	177 mA	168 mA	159 mA	133 mA
4904-9344	WHITE	RED	110cd	253 mA	238 mA	225 mA	213 mA	202 mA	169 mA



TrueAlert™ NON-ADDRESSABLE (STYLE Y) SPEAKER/VISIBLE 4903 SERIES

PRODUCT INFORMATION

FEATURES:

- AUDIBLE NOTIFICATION APPLIANCE (SPEAKER)
- HIGH QUALITY VOICE AND TONE REPRODUCTION WITH TAPS FOR 1/4, 1/2, 1W, OR 2W AT 25 OR 70.7 VRMS
- UL LISTED TO STANDARD 481
- SPEAKERS ARE WIRED SEPARATELY FROM STROBE WIRING

TrueAlert NON-ADDRESSABLE VISIBLE NOTIFICATION APPLIANCE (STROBE)

- XENON STROBE AVAILABLE WITH 15, 75, AND 110 CANDELA
- 24 VDC OPERATION WITH SWITCH SELECTION FOR FREE-RUN OR SYNCHRONIZED FLASH RATE COMPATIBLE WITH SMARTSYNC STROBE OPERATION
- UL LISTED TO STANDARD 1971
- COMPATIBLE WITH ADA REQUIREMENTS
- RUGGED, HIGH IMPACT FLAME RETARDANT THERMOPLASTIC HOUSING AVAILABLE IN RED OR WHITE (COVERS ARE AVAILABLE SEPARATELY TO CONVERT COLORS)

TrueAlert NOTIFICATION APPLIANCE DESIGN PROVIDES:

- FLEXIBLE, EASY, AND CONVENIENT SEMI-FLUSH OR SURFACE WALL BOX MOUNTING

GENERAL SPECIFICATIONS:

- HOUSING DIMENSIONS (INCLUDING LENS): 7 1/4" H X 5" W X 2 5/8" D (184 mm X 127 mm X 67 mm)
- DEPTH INTO BOX: 2 1/4" (57mm)
- SPEAKER TAP SELECTION: SINGLE JUMPER WIRE WITH PRESSURE CONNECTOR ATTACHES TO ONE OF 6 TERMINALS
- TEMPERATURE RANGE: 32° F TO 122° F (0° TO 50° C)
- HUMIDITY RANGE: 10% TO 93% NON-CONDENSING AT 100° F (38° C)
- CONNECTIONS: TERMINALS FOR 18 TO 14 AWG, SEPARATE TERMINALS FOR SPEAKER AND TRULERT STROBE CONNECTION

STROBE

- RATED VOLTAGE RANGE: 16 TO 33 VDC
- STROBE FLASH RATE: 1Hz

*CURRENT DRAWS REFLECT STROBE FLASHING

MODEL NUMBER	HOUSING COLOR	LETTERING COLOR	STROBE RATING	16 VDC	17 VDC	18 VDC	19 VDC	20 VDC	24 VDC
4903-9356	RED	WHITE	15cd	77 mA	72 mA	67 mA	63 mA	58 mA	53 mA
4903-9357	RED	WHITE	75cd	202 mA	190 mA	177 mA	165 mA	152 mA	125 mA
4903-9358	RED	WHITE	110cd	281 mA	245 mA	229 mA	213 mA	197 mA	163 mA
4903-9359	WHITE	RED	15cd	77 mA	72 mA	67 mA	63 mA	58 mA	53 mA
4903-9360	WHITE	RED	75cd	202 mA	190 mA	177 mA	165 mA	152 mA	125 mA
4903-9361	WHITE	RED	110cd	281 mA	245 mA	229 mA	213 mA	197 mA	163 mA

SPEAKER

- INPUT VOLTAGE: 25 OR 70.7 VRMS, SEE NOTE 4
- POWER TAPS: 1/4, 1/2, 1W, AND 2W
- REVERBERANT CHAMBER, UL 1480 TEST: 78, 81, 84, 87
- ANECHOIC CHAMBER, ON-AXIS, 1kHz INPUT: 89, 92, 95, 98

SPEAKER OUTPUT RATINGS (dBA @ 10 FT. (3m))	1/4W	1/2W	1W	2W
WATTAGE TAP (25 VRMS OR 70.7 VRMS INPUT)	78	81	84	87
REVERBERANT CHAMBER, UL 1480 TEST	78	81	84	87
ANECHOIC CHAMBER, ON-AXIS, 1kHz INPUT	89	92	95	98

SPECIFICATION NOTES:

- THE RATED VOLTAGE RANGE LISTED IS THE ABSOLUTE OPERATING RANGE. OPERATION OUTSIDE OF THIS RANGE MAY CAUSE PERMANENT DAMAGE TO THE STROBE. PLEASE NOTE THAT 16VDC IS THE LOWEST OPERATING VOLTAGE THAT IS ALLOWED AT THE LOWEST AMBIENT TEMPERATURE. UNDER NORMAL OPERATING CONDITIONS, VDC VOLTAGE DROPPAGE AND STANDBY BATTERY CALCULATIONS SHOULD BE MADE USING ANTICIPATED OPERATING CONDITIONS.
- THE STROBE OF THIS S/V IS A TRULERT NON-ADDRESSABLE APPLIANCE THAT IS FIELD SELECTABLE FOR FREE-RUN OR SYNCHRONIZED OPERATION. SYNCHRONIZED OPERATION IS COMPATIBLE WITH SMARTSYNC CONTROL.
- UL 1480 SPEAKER OUTPUT RATING CATEGORIES ARE BASED UPON 3 dBA INCREMENTS.
- SPEAKERS ARE FOR CONNECTION TO CONVENTIONAL FIRE ALARM AUDIO CIRCUITS.

WIRING NOTES:

- REFER TO FIELD WIRING DIAGRAMS SUPPLIED WITH THE FACP FOR DETAILED NAC WIRING INFORMATION.
- NOTIFICATION APPLIANCES ARE RATED PER INDIVIDUAL NAMEPLATE LABEL.
- MAINTAIN CORRECT POLARITY ON TERMINAL CONNECTIONS. DO NOT LOOP WIRES UNDER TERMINALS.
- ALL NAC WIRING CONNECTIONS ARE SUPERVISED AND POWER-LIMITED.
- POWERING THE S/V FROM AN APPLIANCE POWER SOURCE LESS THAN 16 VDC OR GREATER THAN 33 VDC MAY CAUSE PERMANENT DAMAGE TO THE S/V STROBE UNIT. TERMINALS ACCOMMODATE TWO (2) #12-18 AWG WIRES. MIXING OF WIRE GAUGES NOT RECOMMENDED.
- MAXIMUM 35 STROBE APPLIANCES PER CIRCUIT WHEN SYNCHRONOUS STROBE OPERATION IS SELECTED. MAXIMUM 30 OHM WIRE RESISTANCE BETWEEN STROBE APPLIANCES. REFER TO THE FIELD WIRING DRAWINGS OF THE DRIVING FIRE ALARM CONTROL PANEL FOR FURTHER INSTRUCTIONS.

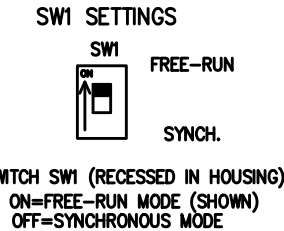
MOUNTING ADAPTERS AND BOXES

MODEL NUMBER	DESCRIPTION	DIMENSIONS
4905-9946	SURFACE MOUNT RED ADAPTER SKIRT	REQUIRED WHEN MOUNTING TO SURFACE MOUNTED ELECTRICAL BOX 4" SQUARE, 1 1/2" DEEP WITH 1 1/2" DEEP EXTENSION (90mm)
4905-9947	SURFACE MOUNT WHITE ADAPTER SKIRT	REQUIRED WHEN MOUNTING TO SURFACE MOUNTED ELECTRICAL BOX 4" SQUARE, 1 1/2" DEEP WITH 1 1/2" DEEP EXTENSION (90mm)
4905-9903	ADAPTER PLATE, RED, REQUIRED TO MOUNT S/V ON 2975-9145	7 3/4" H X 5 3/8" W X 3 3/16" D (197 mm X 137 mm X 81 mm)
2975-9145	MOUNTING BOX, RED FOR SURFACE OR FLUSH MOUNT REQUIRES ADAPTER PLATE 4905-9903 (THIS BOX MAY BE AVAILABLE FOR RETROFIT APPLICATIONS)	8 5/16" H X 5 3/4" W X 0.000" THICK (211 mm X 146 mm X 1.5 mm)
4905-9902	MOUNTING BOX, RED FOR SURFACE OR FLUSH MOUNT REQUIRES ADAPTER PLATE 4905-9903 (THIS BOX MAY BE AVAILABLE FOR RETROFIT APPLICATIONS)	7 7/8" H X 5 1/8" W X 2 3/4" D (200 mm X 130 mm X 70 mm)

COVERS & GUARD (FOR REPLACEMENT OR COLOR CONVERSION)

MODEL NUMBER	DESCRIPTION	DIMENSIONS
4905-9902	RED S/V COVER WITH WHITE "FIRE" LETTERING	7 1/4" H X 5" W X 1 3/8" D (184 mm X 127 mm X 35 mm)
4905-9903	WHITE S/V COVER WITH RED "FIRE" LETTERING	7 1/4" H X 5" W X 1 3/8" D (184 mm X 127 mm X 35 mm)
4905-9999	WIRE GUARD WITH MOUNTING PLATE, RED, COMPATIBLE WITH SURFACE AND SEMI-FLUSH BOXES	8 3/8" H X 6 1/8" W X 3 1/4" D (213 mm X 154 mm X 79 mm)

TrueAlert STROBE SWI SETTINGS



TrueAlert SPEAKER JUMPER SETTINGS

JUMPER POSITION	VOLTAGE	WATTAGE SETTING
J1 TO TAP A	70.7VRMS	1/4
J1 TO TAP B	70.7VRMS	1/2
J1 TO TAP C	70.7VRMS	1
J1 TO TAP D	70.7VRMS	2
J1 TO TAP E	25VRMS	1/2
J1 TO TAP F	25VRMS	1
J1 TO TAP G	25VRMS	2

MOUNTING NOTES:

- AT THE ELECTRICAL BOX, CONNECT CONTRACTOR WIRING TO THE STROBE+ AND STROBE- TERMINALS AND SPEAKER WIRES TO THE SPKR+ AND SPKR- TERMINALS AT THE REAR OF THE S/V. TORQUE TERMINAL BLOCK SCREWS 12-15 IN/LS. TO ENSURE PROPER CONTINUITY.
- ENSURE THAT CORRECT POLARITY IS MAINTAINED FOR EACH S/V.
- CONVERT THE SPEAKER WATTAGE SETTING USING THE SPEAKER JUMPER SETTINGS TABLE. ENSURE THAT THE RMS VALUE OF THE CONNECTED AUDIO CIRCUIT MATCHES THE RMS VALUE OF THE CONNECTED SPEAKER. AN INCORRECT TAP SETTING MAY DAMAGE THE SPEAKER. THE FACTORY DEFAULT SETTING FOR THE SPEAKER IS J1 TO TAP E (25VRMS, 1/2 W).

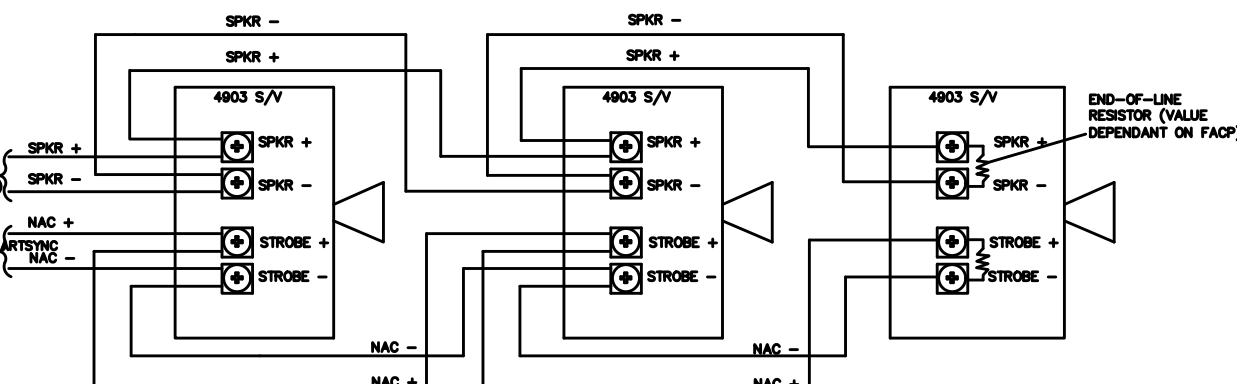
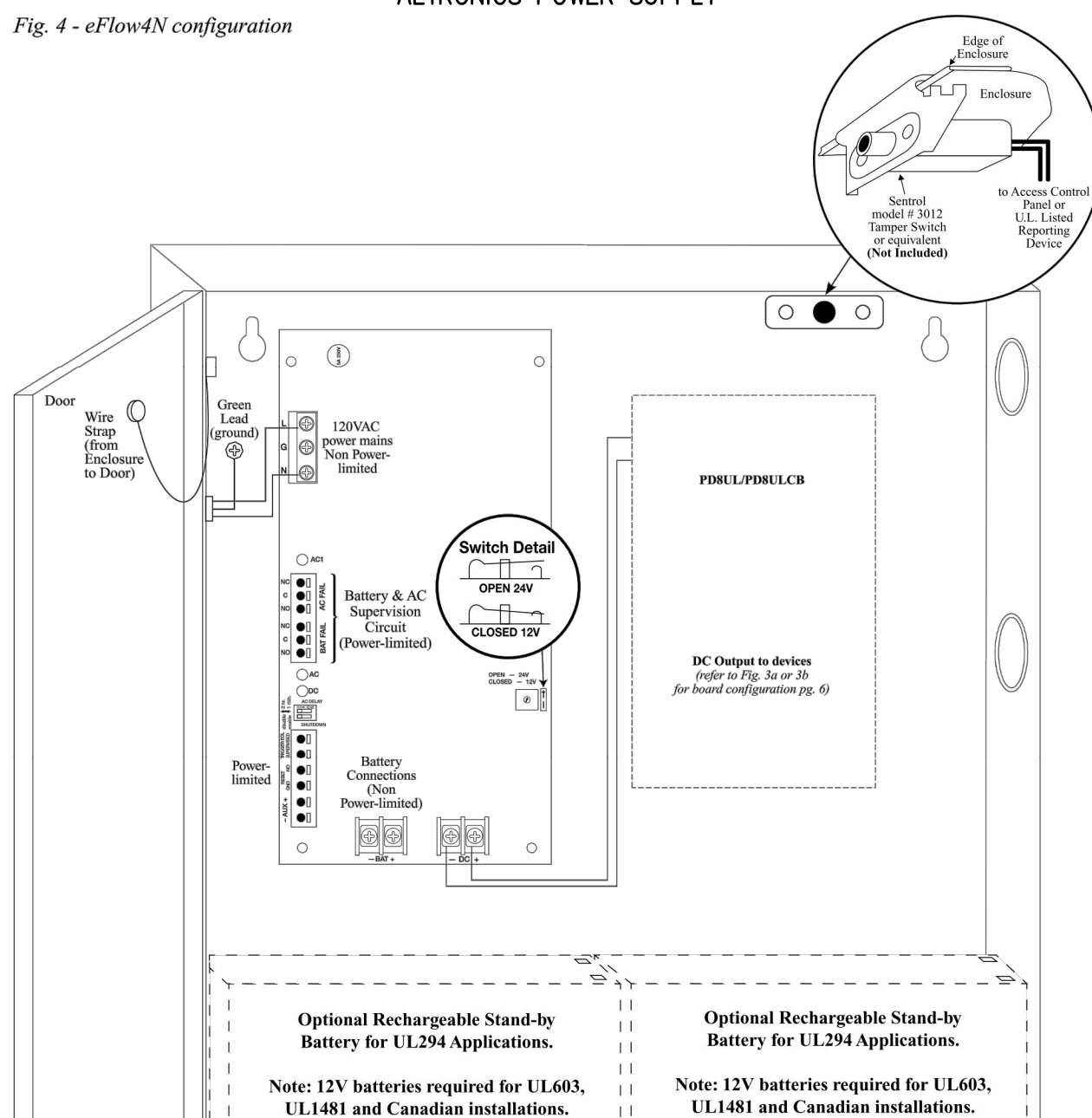


Fig. 4 - eFlow4N configuration

ALTRONICS POWER SUPPLY



eFlow4N Series

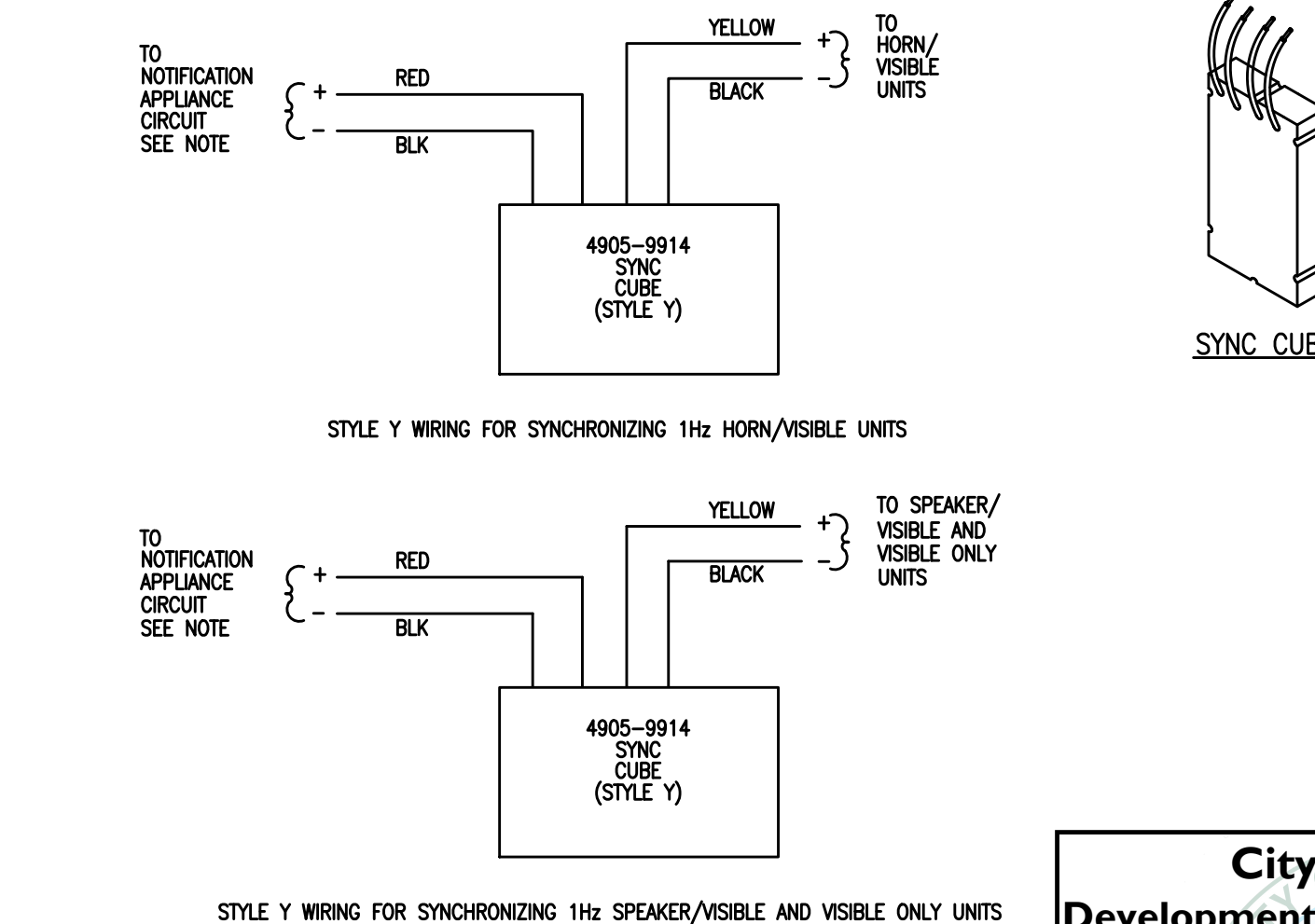
4905-9914 SYNC CUBE (STYLE Y)

PRODUCT INFORMATION

- FOR USE WITH 4903 & 4906 A/V DEVICES WITH SYNCHRONIZED STROBES AND 4904 & 4906 SYNCHRONIZED VISUAL ONLY DEVICES.
- USE NON-CODED NAC CIRCUIT

NOTE:

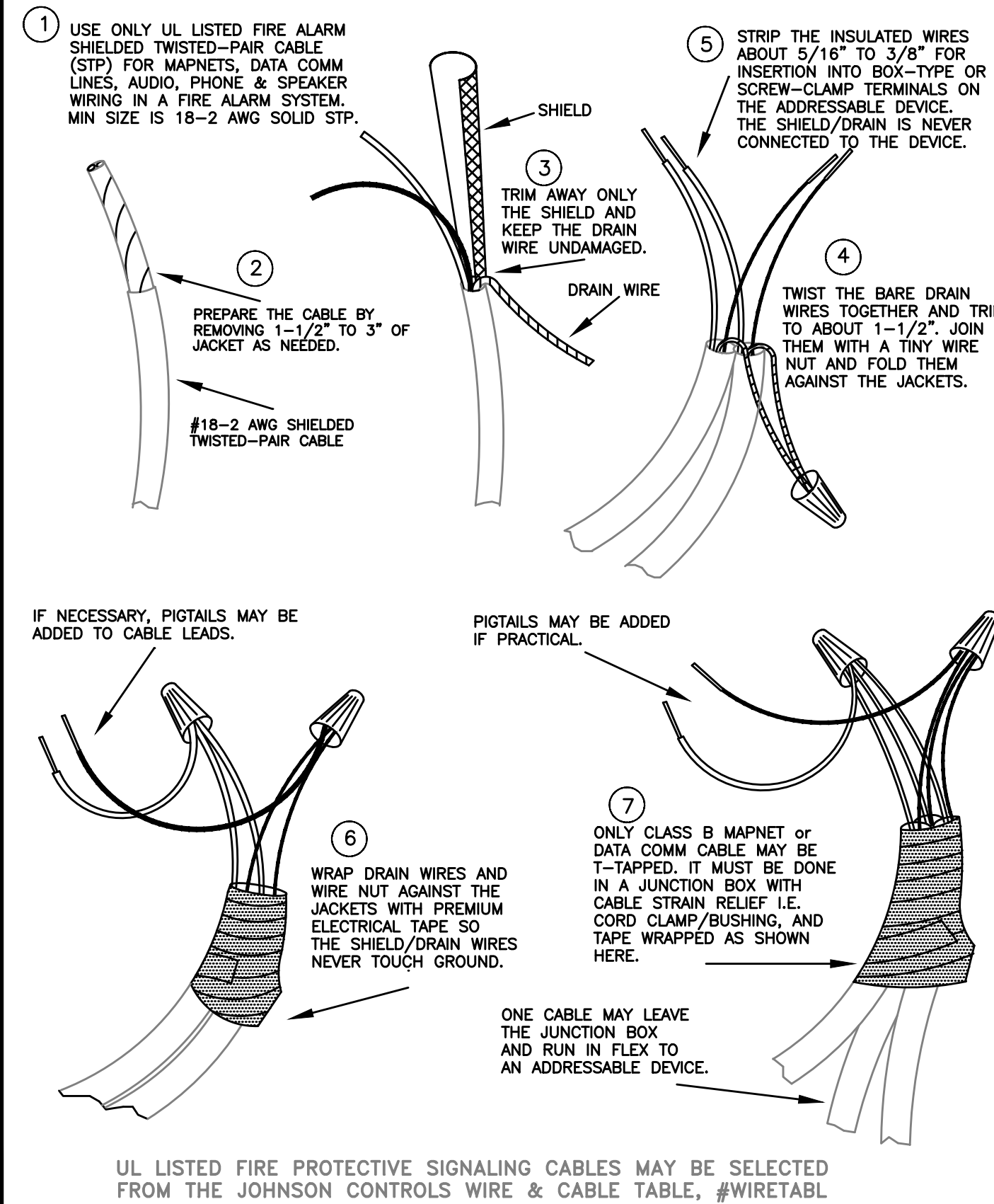
- SYNC CUBE CAN BE INSTALLED WITHIN CONTROL CABINET (4100ES, 4100L, 4009DN4L, 4010, 4004, 4005, 4020 4100+, OR 4120 SYSTEM) BY CONNECTING TO THE TERMINALS OF NOTIFICATION APPLIANCE CIRCUIT. SYNC CUBE CAN ALSO BE MOUNTED REMOTELY FROM FACP (SEE MOUNTING DETAIL ON THIS SHEET).



City of Puyallup
Development & Permitting Services
ISSUED PERMIT

Building	Planning
Engineering	Public Works
Fire	Traffic

SHIELDS & DRAINS MUST NEVER TOUCH GROUND



WIRING TECHNIQUES FOR SHIELDED CABLE

UL LISTED FIRE PROTECTIVE SIGNALING CABLES MAY BE SELECTED FROM THE JOHNSON CONTROLS WIRE & CABLE TABLE, #WIRETABL



9520 10th Avenue S, Suite 1100
Seattle, WA 98108
206-291-1400
SALES: 206-291-1400
FAX: 206-291-1500

PROJECT #	PROJECT NAME	DATE	REVISION	DESCRIPTION	DESIGNER	DRAWN	CHECKED
612534326	SH 2 RIVER 3RD FLR DAY ROOM - REC. DWGS	8/16/19	1	ISSUE FOR CONSTRUCTION	SSS	MAM	JWB
614633427	SSH 1 FOREST 1ST FLR START ROOMS	10/21/19	1	ISSUE FOR CONSTRUCTION	MAM	JWB	JWB
612476312	NODE 2 FACP UPGRADE - RECORD DRAWINGS	3/19/21	1	ISSUE FOR CONSTRUCTION	JEJ	MAM	JWB
614633427	SSH 1 FOREST 1ST FLR START ROOMS C/O#1	8/3/21	1	ISSUE FOR CONSTRUCTION	MAM	JWB	JWB
614633427	SSH 1 FOREST 1ST FLR START ROOMS C/O#2	11/30/21	1	ISSUE FOR CONSTRUCTION	MAM	JWB	JWB
614633427	SSH 1 FOREST 1ST FLR START ROOMS ASH#2	12/08/21	1	ISSUE FOR CONSTRUCTION	PF	JWB	JWB

DRAWINGS REVIEWED BY:

Chad McCann, SET
NCEET #099310
Fire Alarm Systems, Level IV

FIRE ALARM SYSTEM
DETAIL SHEET
GOOD SAMARITAN HOSPITAL
EAST/NORTH WING
407 14TH AVENUE
PUYALLUP, WA

APPROVED BY: EP
DRAWN BY: JOP
DATE: 6-21-2001
SITE NUMBER: 459
SHEET NUMBER: FA-DET-03

Plan Circuit	Description	Load	% Drop
SIG3	4TH FLOOR NORTH WING	SIG3 2.000A	0.00%
SIG4	3RD FLOOR NORTH WING	SIG4 2.000A	0.00%
SIG5	2ND FLOOR NORTH WING	SIG5 2.000A	0.00%
			Total
			6.000A

POINTS SHOWN IN ITALIC TEXT REFER TO EXISTING DEVICES.

Device #	PID	Setting	Distance (Feet)	Device Current	Voltage Drop	Voltage At Device
SIG3-1	EXIST-DEV1			2.000	0.000	19.50
Totals:			0 Ft.	2.000A		

Device #	PID	Setting	Distance (Feet)	Device Current	Voltage Drop	Voltage At Device
SIG4-1	EXIST-DEV1			2.000	0.000	19.50
Totals:			0 Ft.	2.000A		

Device #	PID	Setting	Distance (Feet)	Device Current	Voltage Drop	Voltage At Device
SIG5-1	EXIST-DEV1			2.000	0.000	19.50
Totals:			0 Ft.	2.000A		

Plan Circuit	Description	Load	% Drop
SIG21	SPARE	SIG21 0.000A	0.00%
SIG22	SPARE	SIG22 0.000A	0.00%
SIG23	SPARE	SIG23 0.000A	0.00%
			Total
			0.000A

POINTS SHOWN IN ITALIC TEXT REFER TO EXISTING DEVICES.

Device #	PID	Setting	Distance (Feet)	Device Current	Voltage Drop	Voltage At Device
SIG21-1	EXIST-DEV3			0.000	0.000	19.50
Totals:			0 Ft.	0.000A		

Device #	PID	Setting	Distance (Feet)	Device Current	Voltage Drop	Voltage At Device
SIG22-1	EXIST-DEV4			0.000	0.000	19.50
Totals:			0 Ft.	0.000A		

Device #	PID	Setting	Distance (Feet)	Device Current	Voltage Drop	Voltage At Device
SIG23-1	EXIST-DEV4			0.000	0.000	19.50
Totals:			0 Ft.	0.000A		

Plan Circuit	Description	Load	% Drop
SIG27	SPARE	SIG27 0.000A	0.00%
SIG28	SPARE	SIG28 0.000A	0.00%
SIG29	SPARE	SIG29 0.000A	0.00%
			Total
			0.000A

POINTS SHOWN IN ITALIC TEXT REFER TO EXISTING DEVICES.

Device #	PID	Setting	Distance (Feet)	Device Current	Voltage Drop	Voltage At Device
SIG27-1	EXIST-DEV3			0.000	0.000	19.50
Totals:			0 Ft.	0.000A		

Device #	PID	Setting	Distance (Feet)	Device Current	Voltage Drop	Voltage At Device
SIG28-1	EXIST-DEV3			0.000	0.000	19.50
Totals:			0 Ft.	0.000A		

Device #	PID	Setting	Distance (Feet)	Device Current	Voltage Drop	Voltage At Device
SIG29-1	EXIST-DEV3			0.000	0.000	19.50
Totals:			0 Ft.	0.000A		

Plan Circuit	Description	Load	% Drop
SIG9	FLR 1 EAST WING	SIG9 1.500A	0.00%
SIG10	GROUND FLR NORTH WING	SIG10 1.500A	0.00%
SIG11	EAST WING 1ST FLR NAC LINEN RM	SIG11 1.500A	0.00%
SIG12	EAST WING 1ST FLR NAC LINEN RM	SIG12 1.000A	0.00%
SIG13	WEST ADDN. GROUND FLR STROBES	SIG13 1.000A	0.00%
SIG14	WEST ADDN. FIRST FLR STROBES	SIG14 1.000A	0.00%
			Total
			7.500A

POINTS SHOWN IN ITALIC TEXT REFER TO EXISTING DEVICES.

Device #	PID	Setting	Distance (Feet)	Device Current	Voltage Drop	Voltage At Device
SIG9-1	EXIST-DEV3			1.500	0.000	19.50
Totals:			0 Ft.	1.500A		

Device #	PID	Setting	Distance (Feet)	Device Current	Voltage Drop	Voltage At Device
SIG10-1	EXIST-DEV3			1.500	0.000	19.50
Totals:			0 Ft.	1.500A		

Device #	PID	Setting	Distance (Feet)	Device Current	Voltage Drop	Voltage At Device
SIG11-1	EXIST-DEV3			1.500	0.000	19.50
Totals:			0 Ft.	1.500A		

Device #	PID	Setting	Distance (Feet)	Device Current	Voltage Drop	Voltage At Device
SIG12-1	EXIST-DEV4			1.000	0.000	19.50
Totals:			0 Ft.	1.000A		

POINTS SHOWN IN ITALIC TEXT REFER TO EXISTING DEVICES.

Device #	PID	Setting	Distance (Feet)	Device Current	Voltage Drop	Voltage At Device
SIG13-1	EXIST-DEV4			1.000	0.000	19.50
Totals:			0 Ft.	1.000A		

Device #	PID	Setting	Distance (Feet)	Device Current	Voltage Drop	Voltage At Device
SIG14-1	EXIST-DEV4			1.000	0.000	19.50
Totals:			0 Ft.	1.000A		

Plan Circuit	Description	Load	% Drop
SIG15	2ND FLR PENTHOUSE WEST ADDITION STROBES	SIG15 5.500A	0.00%
SIG16	1ST FLR START RMS	SIG16 1.290A	12.00%
SIG17	NEAR FIRE ALARM PANEL RM	SIG17 1.500A	0.00%
SIG18	2ND FLR PENTHOUSE EAST WING	SIG18 1.000A	0.00%
SIG19	SPARE	SIG19 0.000A	0.00%
SIG20	SPARE	SIG20 0.000A	0.00%
			Total
			5.290A

POINTS SHOWN IN ITALIC TEXT REFER TO EXISTING DEVICES.

Device #	PID	Setting	Distance (Feet)	Device Current	Voltage Drop	Voltage At Device
SIG15-1	EXIST-DEV3			1.500	0.000	19.50
Totals:			0 Ft.	1.500A		

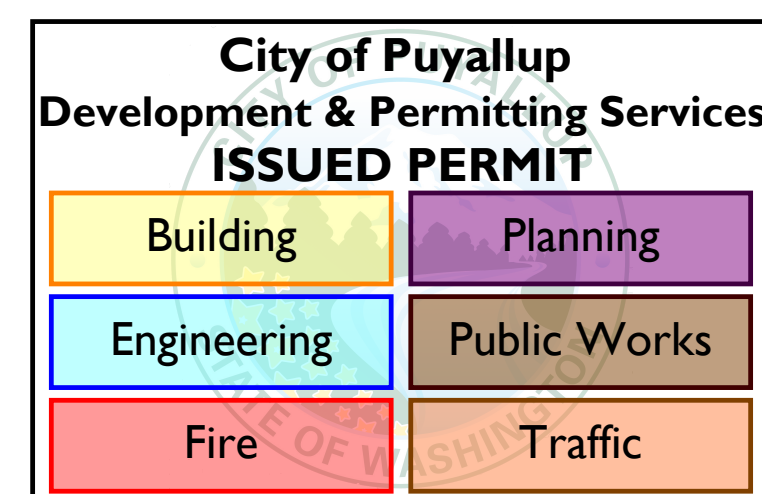
Device #	PID	Setting	Distance (Feet)	Device Current	Voltage Drop	Voltage At Device
SIG16-1	4906-9151	15cd	120	0.060	0.950	18.55
SIG16-2	4906-9151	15cd	15	0.060	1.064	18.44
SIG16-3	4906-9151	15cd	20	0.060	1.207	18.29
SIG16-4	4906-9151	15cd	15	0.060	1.310	18.19
SIG16-5	4906-9101	15cd	15	0.060	1.406	18.09
SIG16-6	4906-9101	15cd	10	0.060	1.467	18.03
SIG16-7	4906-9151	15cd	15	0.060	1.533	17.95
SIG16-8	4906-9101	15cd	15	0.060	1.633	17.87
SIG16-9	4906-9101	15cd	45	0.060	1.857	17.64
SIG16-10	4906-9151	15cd	25	0.060	1.972	17.53
SIG16-11	4906-9101	15cd	10	0.060	2.014	17.49
SIG16-12	4906-9154	15cd	15	0.075	2.072	17.43
SIG16-13	4906-9154	15cd	15	0.075	2.123	17.38
SIG16-14	4906-9151	15cd	15	0.060	2.168	17.33
SIG16-15	4906-9151	15cd	15	0.060	2.206	17.29
SIG16-16	4906-9101	15cd	10	0.060	2.228	17.27
SIG16-17	4906-9151	15cd	15	0.060	2.256	17.24
SIG16-18	4906-9151	15cd	15	0.060	2.278	17.22
SIG16-19	4906-9151	15cd	15	0.060	2.295	17.21
SIG16-20	4906-9151	15cd	50	0.060	2.332	17.17
SIG16-21	4906-9101	15cd	25	0.060	2.341	17.16
Totals:			495 Ft.	1.290A		

Device #	PID	Setting	Distance (Feet)	Device Current	Voltage Drop	Voltage At Device
SIG17-1	EXIST-DEV3			1.500	0.000	19.50
Totals:			0 Ft.	1.500A		

Device #	PID	Setting	Distance (Feet)	Device Current	Voltage Drop	Voltage At Device
SIG18-1	EXIST-DEV4			1.000	0.000	19.50
Totals:			0 Ft.	1.000A		

Device #	PID	Setting	Distance (Feet)	Device Current	Voltage Drop	Voltage At Device
SIG19-1	EXIST-DEV4			0.000	0.000	19.50
Totals:			0 Ft.	0.000A		

Device #	PID	Setting	Distance (Feet)	Device Current	Voltage Drop	Voltage At Device
SIG20-1	EXIST-DEV4			0.000	0.000	19.50
Totals:			0 Ft.	0.000A		



9500 10th Avenue S, Suite 100
 Seattle, WA 98108
 SALES: 206-291-1400
 SERVICE: 206-291-1500
 FAX: 206-291-1500

NO.	DATE	REVISION DESCRIPTION	DRAWER	ENGINEER	PROJECT #
29	8/16/19	GSH 2 RIVER 3RD FLR DAY ROOM - REC. DWGS	SSS	JWB	612534326
30	10/21/19	GSH 1 FOREST 1ST FLR START ROOMS	MAM	JWB	614633427
31	3/19/21	NODE 2 FACP UPGRADE - RECORD DRAWINGS	LEJ	JWB	612476312
32	8/3/21	GSH 1 FOREST 1ST FLR START ROOMS C/O#1	MAM	JWB	614633427
32	11/30/21	GSH 1 FOREST 1ST FLR START ROOMS C/O#2	MAM	JWB	614633427
32	12/08/21	GSH 1 FOREST 1ST FLR START ROOMS ASH#2	PF	JWB	614633427

DRAWINGS REVIEWED BY:
 Chad McCannan, SET
 NCEET #09310
 Fire Alarm Systems, Level IV

FIRE ALARM SYSTEM
 CALCULATIONS SHEET
 GOOD SAMARITAN HOSPITAL
 EAST/NORTH WING
 407 14TH AVENUE
 PUYALLUP, WA

APPROVED BY:
 EP
 DRAWN BY:
 JOP
 DATE:
 6-21-2001
 SHEET NUMBER:
 459
 SHEET NUMBER:
 FA-CAL-02

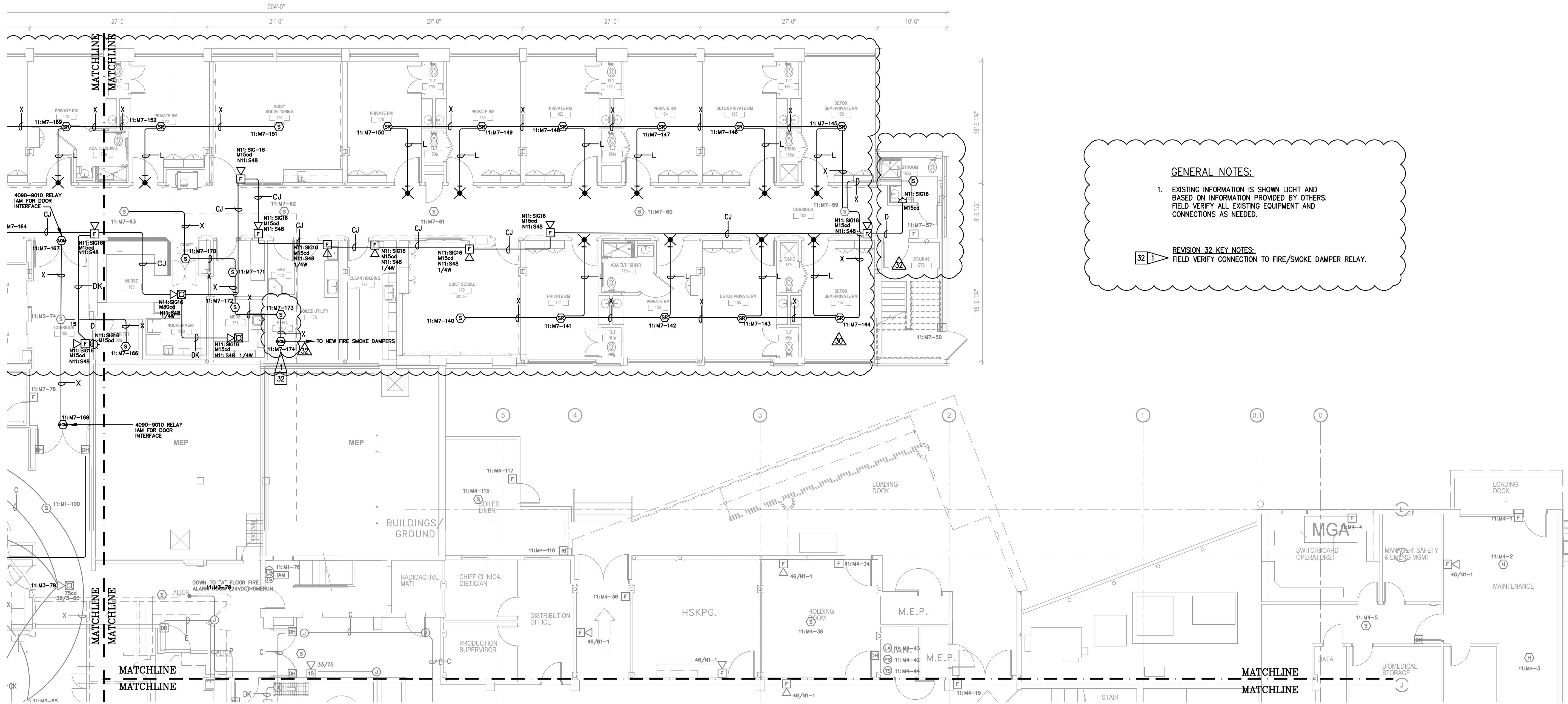
Building	Planning
Engineering	Public Works
Fire	Traffic

**ELECTRICAL CONTRACTOR
ASBUILTS**

- ELECTRICAL CONTRACTOR IS RESPONSIBLE FOR PROVIDING JOHNSON CONTROLS WITH ACCURATE REDLINED DRAWINGS. DRAWINGS SHALL BE REDLINED AS NECESSARY TO SHOW THE FOLLOWING:

- DEVICE LOCATIONS - ADDS/DELETES.
- CIRCUIT NUMBERS - ADDRESSABLE/SIGNAL/AUXILIARY/ZONE.
- WIRE/CONDUIT - ACCURATE ROUTING.
- WIRE FILL - USING WIRE CODE.
- EOL RESISTOR LOCATIONS.

JOHNSON CONTROLS WILL PROVIDE (UPON REQUEST) A BLANK SET OF FLOOR PLANS TO BE REDLINED. JOHNSON CONTROLS WILL INCORPORATE ALL REDLINED CHANGES INTO THE RECORD AUTOCAD SET OF DRAWINGS.



GENERAL NOTES:

- EXISTING INFORMATION IS SHOWN LIGHT AND BASED ON INFORMATION PROVIDED BY OTHERS. FIELD VERIFY ALL EXISTING EQUIPMENT AND CONNECTIONS AS NEEDED.

REVISION 32 KEY NOTES:
FIELD VERIFY CONNECTION TO FIRE/SMOKE DAMPER RELAY.

FIRST FLOOR NORTH WING
SCALE 1/8"=1'-0"



9520 10th Avenue S, Suite 100
Seattle, WA 98108
SALES: 206-291-4400
FAX: 206-291-1500

NO.	DATE	REVISION DESCRIPTION	DRAWER ENGINEER	PROJECT #
29	8/16/19	GSH 2 RIVER 3RD FLR DAY ROOM - REC. DWGS	SSS	612534326
30	10/21/19	GSH 1 FOREST 1ST FLR START ROOMS	MAM	614633427
31	3/19/21	NODE 2 FACP UPGRADE - RECORD DRAWINGS	JEJ	612476312
32	8/3/21	GSH 1 FOREST 1ST FLR START ROOMS C/O#1	MAM	614633427
33	11/30/21	GSH 1 FOREST 1ST FLR START ROOMS C/O#2	MAM	614633427
34	12/08/21	GSH 1 FOREST 1ST FLR START ROOMS ASH#2	PF	614633427

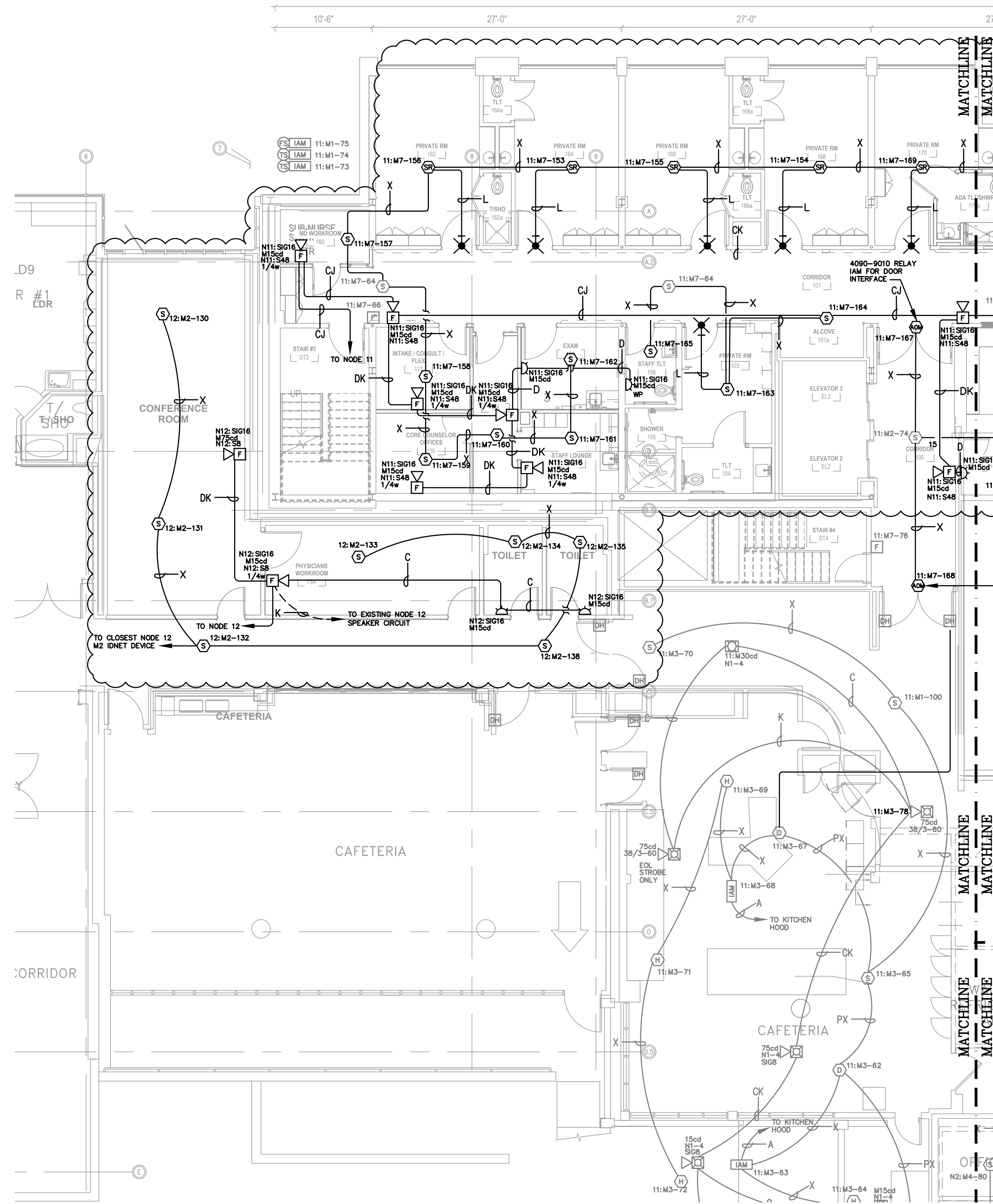
DRAWINGS REVIEWED BY:
Chad McCannon, SET
NICET #99310
Fire Alarm Systems, Level IV

**FIRE ALARM SYSTEM
FIRST FLOOR NORTH WING
GOOD SAMARITAN HOSPITAL
EAST/NORTH WING
407 14TH AVENUE
PUYALLUP, WA**

APPROVED BY: EP
DRAWN BY: JCP
DATE: 6-21-2001
SITE NUMBER: 459
SHEET NUMBER: FA-F-01N

City of Puyallup
Development & Permitting Services
ISSUED PERMIT

Building	Planning
Engineering	Public Works
Fire	Traffic



FIRST FLOOR EAST WING
SCALE 1/8"=1'-0"



ELECTRICAL CONTRACTOR
ASBULTS

- ELECTRICAL CONTRACTOR IS RESPONSIBLE FOR PROVIDING JOHNSON CONTROLS WITH ACCURATE REDLINED DRAWINGS. DRAWINGS SHALL BE REDLINED AS NECESSARY TO SHOW THE FOLLOWING:

- DEVICE LOCATIONS - ADDS/DELETES.
- CIRCUIT NUMBERS - ADDRESSABLE/SIGNAL/AUXILIARY/ZONE.
- WIRE/CONDUIT - ACCURATE ROUTING.
- WIRE FILL - USING WIRE CODE.
- EOL RESISTOR LOCATIONS.

JOHNSON CONTROLS WILL PROVIDE (UPON REQUEST) A BLANK SET OF FLOOR PLANS TO BE REDLINED. JOHNSON CONTROLS WILL INCORPORATE ALL REDLINED CHANGES INTO THE RECORD AUTOCAD SET OF DRAWINGS.



9520 10th Avenue S, Suite 100
Seattle, WA 98108
SALES: 206-291-1400
FAX: 206-291-1500

NO.	DATE	REVISION DESCRIPTION	DRAFTER ENGINEER	PROJECT #
29	8/16/19	GSH 2 RIVER 3RD FLR DAY ROOM - REC. DWGS	SSS	612534326
30	10/21/19	GSH 1 FOREST 1ST FLR START ROOMS	MAM	614633427
31	3/19/21	NODE 2 FACP UPGRADE - RECORD DRAWINGS	JEJ	612476312
32	8/3/21	GSH 1 FOREST 1ST FLR START ROOMS C/O#1	MAM	614633427
33	11/30/21	GSH 1 FOREST 1ST FLR START ROOMS C/O#2	MAM	614633427
34	12/08/21	GSH 1 FOREST 1ST FLR START ROOMS ASH#2	PF	614633427

DRAWINGS REVIEWED BY:
Chad McCammon, SET
NICET #99810
Fire Alarm Systems, Level IV

FIRE ALARM SYSTEM
FIRST FLOOR EAST WING
GOOD SAMARITAN HOSPITAL
EAST/NORTH WING
407 14TH AVENUE
PUYALLUP, WA

APPROVED BY:	EP
DRAWN BY:	JCP
DATE:	6-21-2001
SITE NUMBER:	459

SHEET NUMBER:
FA-F-01E

FA-F-01E