

SPECIAL JOIST LOADS:

No.	Tab.	LR	Time	Size	Load	Dist	Dist	Remarks
1	DL	T	Unif	Y	22			L 6" PIPE
2	DL	T	Cov	Y	1020			L (2,510) RTU
3	SL	T	Unif	Y	13			L Corner Drift (Fire)
4	SL	T	Unif	Y	0	1'-7"	20	R Exter. Drift at side wall
5	SL	T	Unif	Y	0	2'-5 1/2"	287	L Drift at main wall
6	SL	T	Unif	Y	-55			L TYP. Uplift (Fire)
7	SL	T	Unif	Y	0	2'-6"	289	L Inter. main wall (Fire)
8	SL	T	Unif	Y	0	2'-7 1/2"	33	R Inter. joist (Fire)

Reviewed 2/15/2022 DL Subject to field inspectors approvals.

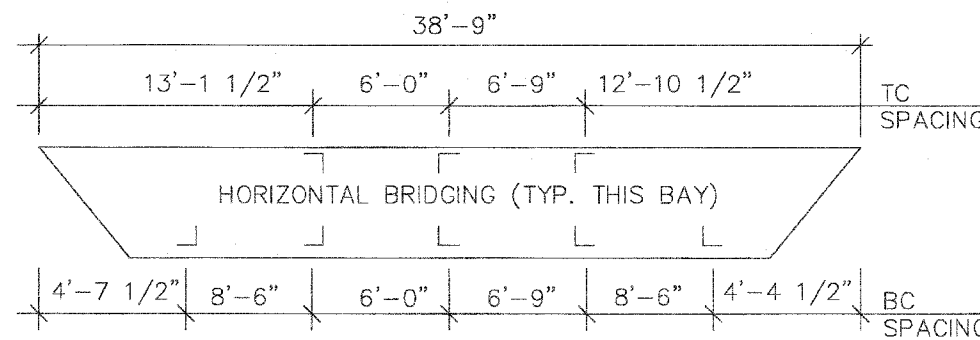
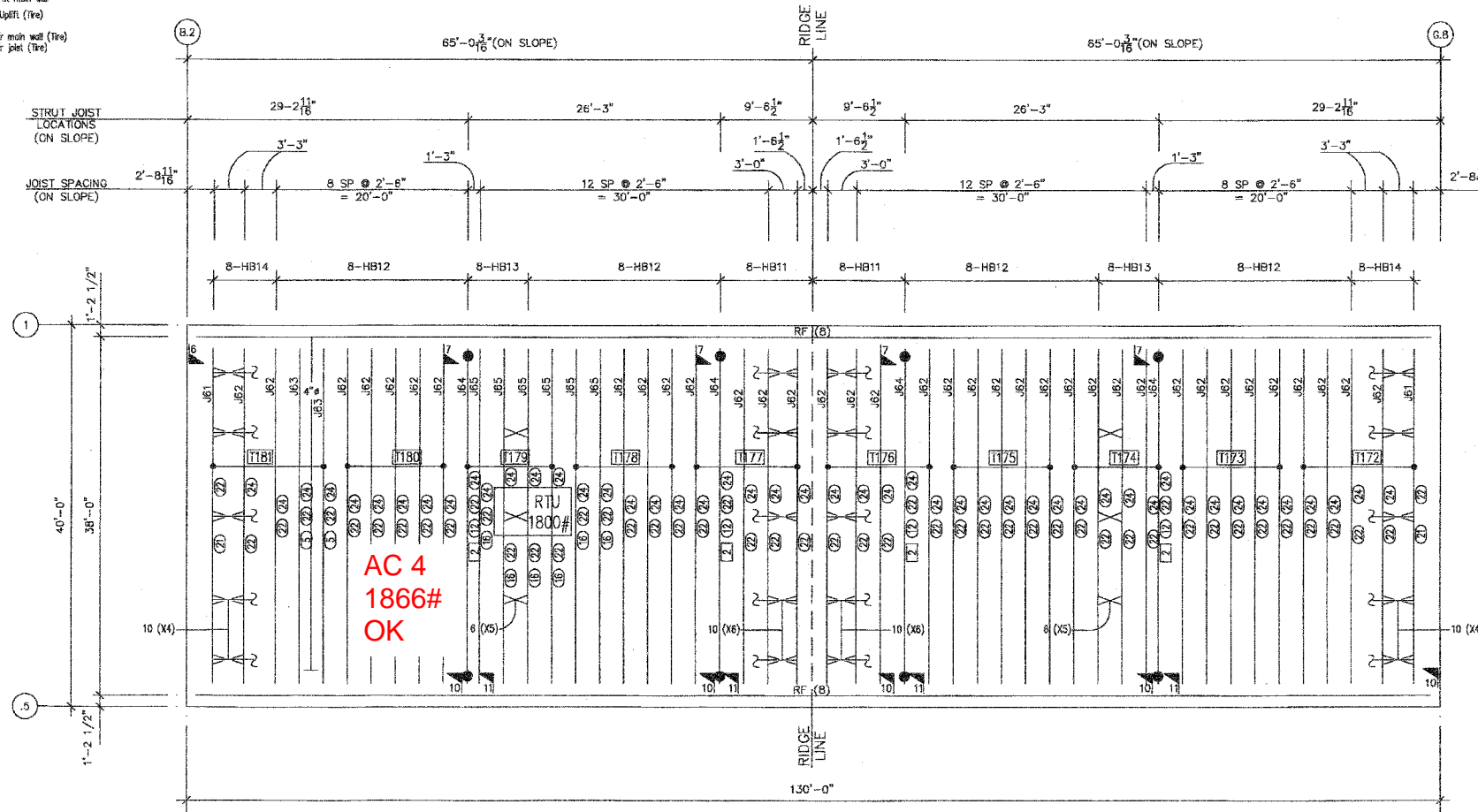
THE APPROVED CONSTRUCTION PLANS AND ALL DOCUMENTS MUST BE POSTED ON THE JOB AT ALL INSPECTIONS IN A VISIBLE AND READILY ACCESSIBLE LOCATION.

SPECIAL DRAWING NOTES:

[Symbol] = MINIMUM BOTTOM CHORD MATERIAL = 2.5" x 2.5" x .25".
NO FILLS WITHIN 1'-0" FROM END OF BOTTOM.

OTHER DRAWING NOTES:

- SEE SHEET J1.0 FOR ERECTION NOTES.
- TAG END OF ALL JOIST (U.N.O.) IS TOWARD THE BOTTOM OF THIS SHEET. NOTED OTHERWISE AT BAY A-B AND BAY D-E. TAG END OF JOIST TOWARD THE TOP OF THIS SHEET. JOIST MARK INDICATES TAGGED END.
- FLANGE WIDTHS:
INTERIOR FLANGE WIDTHS = 5 1/2" MIN. TO 8 1/2" MAX.
EXTERIOR FLANGE WIDTHS = 5" MIN. TO 8" MAX.
SKEWED FRAME FLANGE WIDTHS = 8"
- INDICATES SPRINKLER MAIN
SPRINKLER MAIN HEIGHTS:
4" = 17 PLF
6" = 32 PLF
8" = 51 PLF
"SPRINKLER MAINS MUST BE CENTERED BETWEEN JOIST."
- STRUT LOADS:
INDICATES STRUT JOIST WITH BOTTOM CHORD EXTENSIONS. BOTTOM CHORD OF STRUT JOIST IS TO HAVE A MINIMUM AREA = 1.88 sq.in., MINIMUM THICKNESS = 3/16 in. MINIMUM CHORD REQUIREMENTS CONTROL ANGLE SIZE. ALL STRUT JOIST DESIGNED FOR 33 KIPS BOTTOM CHORD AXIAL LOAD.
- DESIGN LOADS:
LINE LOAD = 30 PSF (LINE LOAD)
DEAD LOAD = 1.2 PSF (ROOF)
DEAD LOAD = 5 PSF (JOIST & BRIDGING BY SM)
COLLATERAL LOAD = 6.0 PSF OR (8.5 + SPRINKLER LOAD)
GROSS WIND UPLIFT = 18.5 PSF (TYP. U.N.O.)
GROSS WIND UPLIFT = 27.8 PSF (AT 4'-0" EDGE ZONES)
NET WIND UPLIFT = 12.3 PSF (TYP. U.N.O.)
NET WIND UPLIFT = 21.6 PSF (AT 4'-0" EDGE ZONES)
"INCREASE ALL DESIGN LOADS BY 1.5X."
- DESIGN NOTES:
NET UPLIFT = -55 PLF
TOP CHORDS ARE LATERALLY SUPPORTED BY THE DECK FOR DEAD PLUS LIVE LOADS ONLY.
TOP CHORDS ARE UNSUPPORTED IN UPLIFT CONDITIONS ONLY.
1/3 STRESS INCREASE IN WIND & SEISMIC STRESSES ALLOWED.
DEFLECTION = L/240
JOIST PANELS TO ALIGN PER BAY.
HOLD DEFAULT END PANELS FOR NON-STRUT JOIST FOR BOX LENGTH.
ALL JOIST ARE 24" DEEP.
ALL JOIST SEATS TO BE 2 1/2" DEEP, 4" LONG, AND BOLTED (U.N.O.)
ALL SEAT SLOTS TO BE 9/16" x 2" LONG W/3 1/4" GAUGE.
ALL BRIDGING IS TO BE BOLTED (OR FIELD WELDED AS NEEDED)
- JOIST LOADING:
UNITS = PLF TOTAL LOAD/LIVE LOAD/UPLIFT
TYPICAL JOIST TYPE IS:
24KS108/77-55



FINAL PLANS
O.K. FIELD USE
DATE 8/22/00

APPROVER:
ALL CLOUDED AREAS SHOWN AS "SUPPLY" OR "VERIFY" ON THE DRAWINGS ARE ESSENTIAL TO SMI JOIST FOR MEETING DELIVERY SCHEDULES. FAILURE TO SUPPLY INFORMATION WILL CAUSE DELAYS IN RELEASING THE JOB FOR PRODUCTION. THOSE AREAS TO BE VERIFIED THAT ARE NOT MARKED SHALL BE ASSUMED TO BE CORRECT AS SHOWN. ALSO, CHANGES MADE AFTER THE APPROVED DRAWINGS HAVE BEEN RECEIVED BY SMI JOIST WILL CAUSE FURTHER DELAYS IN THE JOB SCHEDULE.

SMI JOIST-AR
3565 Hwy 33 North
Hope, AR 71801
(800)643-1577

SMI JOIST-FL
RT. 6 BOX 82
Starks, FL 32091
(800)706-5476

SMI JOIST-SC
850 Tostler Street
Cayce, SC 29033
(800)763-0226

SMI JOIST-NV
8200 Wodery Way
Falls, NV 89426
(888)44-1577

Drawing History		Architect	
6			
5			
4			
3			
2			
1	7/00	Approval	FWW SJ
No.	Date	Description	Det. Chk

Location: PUYALLUP, WA
Customer: VARCO-PRUDEN BUILDINGS
Customer P.O. Number:
FOR INFORMATION CALL OR E-MAIL: (877) 363-2086
Date: J2.1 OF 4
SMI JOB NO.: 22-00-0299
frank.wood@cmcs.com

ROOF JOIST ERECTION PLAN
TIRE CENTER
SCALE: 1/8" = 1'-0"

21-027651
SK-2
Puyallup, WA (#660)
Location Sketch
12-14-21 MMH

S&S Pkg SPAN Rec'd 2021-12-15