

THE APPROVED CONSTRUCTION PLANS AND ALL ENGINEERING MUST BE POSTED ON THE JOB AT ALL INSPECTIONS IN A VISIBLE AND READILY ACCESSIBLE LOCATION.

City of Puyallup
Fire
REVIEWED FOR COMPLIANCE

DDrake
03/07/2022
2:57:12 PM



Approval of submitted plans is not an approval of omissions or oversight by this office or noncompliance with any applicable regulations of local government. The contractor is responsible for making sure that the building complies with all applicable building codes and regulations of the local government.

City of Puyallup
Development & Permitting Services
ISSUED PERMIT

Building	Planning
Engineering	Public Works
Fire	Traffic

GOOD SAMARITAN HOSPITAL

EAST WING AHU REPLACEMENT T.I.

*Fire Alarm and Detection System
Equipment Supplied By*



Project Team Contact Information

Sales Representative:	Tim Duggan	tim.duggan@jci.com	(253) 514-1358
Project Engineer:	Scott Haynes	scott.haynes@jci.com	(206) 777-4850
Project Coordinator:	Reilly Nelson	reilly.nelson@jci.com	(206) 777-4912
Technician Scheduler:	Yvonne Thompson	yvonne.thompson@jci.com	(206) 777-4860

DRAWING LIST			
NO.	DATE	REVISION DESCRIPTION	DRAWER ENGINEER
28	6/19/19	NODE 2 FACP UPGRADE	JWB
	7/24/19	GSH 2 RIVER 2ND FLR - RECORD DRAWINGS	RSC
	8/16/19	GSH 2 RIVER 3RD FLR DAY ROOM - REC. DWGS	SSS
	10/21/19	GSH 1 FOREST 1ST FLR START ROOMS	SSS
29	3/19/21	NODE 2 FACP UPGRADE - RECORD DRAWINGS	MAM
	2/28/22	AHU REPLACEMENT T.I.	JEB
30			SSS

SHEET NAME	DRAWING NAME	ELECTRONIC DRAWING NAME	INCLUDED IN THIS PROJECT
FA-COV-01	TITLE SHEET	FA-COV	X
FA-COV-02	COVER SHEET	FA-COV	X
FA-COV-03	COVER SHEET	FA-COV	
FA-RIS-01	RISER SHEET	FA-COV	
FA-DET-01	DETAIL SHEET	FA-COV	
FA-DET-02	DETAIL SHEET	FA-COV	X
FA-DET-03	DETAIL SHEET	FA-COV	
FA-DET-04	DETAIL SHEET	FA-COV	
FA-DET-05	DETAIL SHEET	FA-COV	
FA-DET-06	DETAIL SHEET	FA-COV	
FA-DET-07	DETAIL SHEET	FA-COV	
FA-DET-08	DETAIL SHEET	FA-COV	
FA-CAL-01	DETAIL SHEET	FA-COV	
FA-CAL-02	DETAIL SHEET	FA-COV	
FA-CAL-03	DETAIL SHEET	FA-COV	
FA-G-01	GROUND FLOOR	FA-G-01	
FA-G-02	GROUND FLOOR	FA-G-01	
FA-G-03	GROUND FLOOR	FA-G-01	
FA-G-04	GROUND FLOOR	FA-G-01	
FA-F-01N	FIRST FLOOR NORTH WING	FA-F-01	
FA-F-01S	FIRST FLOOR SOUTH WING	FA-F-01	
FA-F-01E	FIRST FLOOR EAST WING	FA-F-01	
FA-F-02E	SECOND FLOOR EAST WING	FA-F-02	
FA-F-02N	SECOND FLOOR NORTH WING	FA-F-02	
FA-F-02SW	SECOND FLOOR EAST WING SW	FA-F-02	
FA-F-03N	PARTIAL 3RD FLOOR NORTH WING	FA-F-03	
FA-F-03S	3RD FLOOR INTERM RENOVATIONS	FA-F-03	
FA-F-04N	4TH FLOOR NORTH	FA-F-04	
FA-F-04S	4TH FLOOR SOUTH	FA-F-04	
FA-F-05	PARTIAL 5TH FLOOR PLAN	FA-F-05	
FA-R-01	ROOF NORTH WING	FA-R-01	X
FA-P-01	PENTHOUSE FLOOR PLAN	FA-PENTHOUSE	
FA-P-02	WEST PENTHOUSE (OLD) FLOOR PLAN	FA-PENTHOUSE	



6520 10th Avenue S, Suite 100
Seattle, WA 98108
SALES: 206-281-4400
SERVICE: 206-281-1500
FAX: 206-281-1500

NO.	DATE	REVISION DESCRIPTION	DRAWER ENGINEER	PROJECT #
28	6/19/19	NODE 2 FACP UPGRADE	JWB	612476312
	7/24/19	GSH 2 RIVER 2ND FLR - RECORD DRAWINGS	RSC	610990525
	8/16/19	GSH 2 RIVER 3RD FLR DAY ROOM - REC. DWGS	SSS	612534326
	10/21/19	GSH 1 FOREST 1ST FLR START ROOMS	SSS	614633427
29	3/19/21	NODE 2 FACP UPGRADE - RECORD DRAWINGS	MAM	612476312
	2/28/22	AHU REPLACEMENT T.I.	JEB	650156620
30			SSS	

DRAWINGS REVIEWED BY:
Chad McCannan, SET
NICET #09810
Fire Alarm Systems, Level IV

**FIRE ALARM SYSTEM
TITLE SHEET**
GOOD SAMARITAN HOSPITAL
EAST/NORTH WING
407 14TH AVENUE
PUYALLUP, WA

APPROVED BY: EP
DRAWN BY: JCP
DATE: 6-21-2001
SITE NUMBER: 459
SHEET NUMBER: FA-COV-01

4098-9756 ADDRESSABLE 4-WIRE DUCT SENSOR MAPNET II/IDNet WITH 24VDC RELAY

DUCT DETECTOR SELECTION CHART

MODEL	DESCRIPTION	COMPATIBILITY
4098-9756	DUCT SMOKE SENSOR HOUSING WITH PHOTOELECTRIC SENSOR	JOHNSON CONTROLS FIRE ALARM CONTROL MODELS 4010, 4020, 4100, AND 4120.
2098-9808	RED LED STATUS INDICATOR	USE SINGLE GANG BOX, 3" H X 2" W X 2" D (76 mm X 51 mm X 51 mm)
2098-9806	REMOTE LED INDICATOR AND TEST STATION, SELECT ONE IF REQUIRED	

FEATURES:

- COMPACT AIR DUCT SENSOR HOUSING WITH CLEAR COVER TO MONITOR FOR THE PRESENCE OF SMOKE
- INDIVIDUAL SENSOR INFORMATION PROCESSED BY THE HOST CONTROL PANEL TO DETERMINE SENSOR STATUS
- DIGITAL TRANSMISSION OF ANALOG SENSOR VALUES VIA MAPNET II OR DMH 2-WIRE COMMUNICATIONS
- PROBABLE SENSITIVITY, CONSISTENT ACCURACY, ENVIRONMENTAL COMPENSATION, STATUS TESTING, AND MONITORING OF SENSOR DIRT ACCUMULATION
- DUCT SENSOR HOUSING WITH SUPERVISED OUTPUT FOR MULTIPLE REMOTE RELAYS, REQUIRES SEPARATE 24 VDC (RELAID) INDICATOR PANEL, CONTROL, AND CAN BE REMOVED MANUALLY OR BY A SEPARATE ALARM INPUT

GENERAL FEATURES:

- UL LISTED TO STANDARD 268A
- CLEAR COVER ALLOWS VISUAL INSPECTION
- TEST PORTS PROVIDE FUNCTIONAL SMOKE TESTING ACCESS WITH COVER IN PLACE
- MOUNTS TO RECTANGULAR DUCTS OR ROUND DUCTS (MINIMUM SIZE 8" SQUARE OR 18" DIAMETER)
- MAGNETIC TEST FEATURE FOR ALARM INITIATION AT HOUSING
- OPTIONAL WEATHERPROOF ENCLOSURE IS AVAILABLE SEPARATELY (REFER TO DATA SHEET 4098-0032)

DIAGNOSTIC LEDS (ON INTERFACE BOARD):

- RED ALARM/TROUBLE LED FOR SENSOR STATUS AND COMMUNICATIONS FAILING DISPLAY
- YELLOW LED FOR OPEN OR SHORT TROUBLE INDICATION OF SUPERVISED RELAY CONTROL

SMALLING TUBES (ORDERED SEPARATELY):

- AVAILABLE IN MULTIPLE LENGTHS TO MATCH DUCT SIZE
- INSTALLED AND SERVICED WITH HOUSING IN PLACE

REMOTE MODULE OPTIONS (ORDERED SEPARATELY):

- RED STATUS/ALARM LED (2098-9808)
- TEST STATION WITH LED (2098-9806)
- RELAYS USED (4098-9843)

GENERAL SPECIFICATIONS:

AIR VELOCITY RANGE (LINEAR FT/MIN)	300 TO 4000 FT/MIN (91 TO 1220 m/min)
ALTITUDE	UP TO 8000 FT (2.4 km)
SENSOR SENSITIVITY RANGE AT HOST CONTROL PANEL	0.2K TO 3.7K PER FOOT OF OBBURCATION, SELECTABLE
UL LISTED TEMPERATURE RANGE	32° F TO 100° F (0° C TO 38° C)
OPERATING TEMPERATURE RANGE	32° F TO 122° F (0° C TO 50° C)
STORAGE TEMPERATURE RANGE	0° F TO 140° F (-18° C TO 60° C)
HUMIDITY RANGE	10% TO 95% RH, NON-CONDENSING
HOUSING COLOR	BLACK BASE WITH CLEAR COVER
WIRING CONNECTIONS	TERMINAL BLOCKS, 18 TO 12 AWG
REMOTE STATUS/ALARM LED AND TEST STATION WITH REMOTE STATUS/ALARM LED	
REMOTE ALARM LED CURRENT	1.2 mA, NO IMPACT TO ALARM CURRENT (2098-9808 OR 2098-9806)
TEST STATION KEYSWITCH CURRENT	3.3 mA, NO IMPACT TO ALARM CURRENT (2098-9806)
REMOTE ALARM LED AND TEST STATION DISTANCE	250 FT. (76m) MAXIMUM

ADDRESSABLE OPERATION:

MAPNET II OR DMH1 COMMUNICATION, AUTO-SELECT 1 ADDRESS PER HOUSING, PROVIDES OPERATING POWER TO MODEL 4098-9756.

MODEL 4098-9756 WITH SUPERVISED MULTIPLE RELAY CONTROL, REQUIRES SEPARATE FUSED 24 VDC FROM FIRE ALARM POWER SUPPLY

INPUT VOLTAGE: 18-32 VDC (24 VDC NOMINAL)

STANDBY CURRENT: 2.4 mA @ 24 VDC

ALARM CURRENT: 15 mA @ 24 VDC, ADD 15 mA ADDITIONAL FOR EACH 4098-9843 RELAY.

4098-9843 RELAY OUTPUT RATINGS, SINGLE FORM C:

COIL CURRENT	15 mA @ 24 VDC UP TO 15 MAX. PER RELAY CONTROL OUTPUT
RELAY CONTACTS, RESISTIVE RATINGS	7 A @ 28 VDC; 10 A @ 120 VAC; 250 mA @ 5 VDC
LOCATION DISTANCE	500 FT. (152m) MAX. TO RELAY COILS, RELAY MUST BE WITHIN 3 FT. (1m) OF DEVICE BEING CONTROLLED PER NFPA 72, SECTION 3-9.2.1

WIRING NOTES:

- DUCT SENSOR WIRING IS 12 TO 18 AWG.
- MAXIMUM QUANTITY OF DEVICES PER CIRCUIT IS 127 FOR 4020, 4100+, OR 4120, AND 250 FOR THE 4010 PANEL.
- THE 2098-9808 AND 2098-9806 ARE POLARIZED, OBSERVE COLOR-CODED WIRING.
- MAXIMUM WIRE LENGTH TO TEST TERMINALS AND REMOTE LED IS 250 FEET.
- 4098-9843 PAM-SD RELAY (AIR PRODUCTS & CONTROL LIMITED) ARE RATED AT 7 AMPS 28 VDC/10 AMPS @ 115 VAC. MAXIMUM WIRE LENGTH TO PAM-SD RELAYS IS 500 FT. (152m). WIRING FROM THE RELAY TO THE DEVICE IT IS CONTROLLING SHOULD BE NO MORE THAN 3 FT. (PER NFPA 72).

TrueAlert™ NON-ADDRESSABLE MULTI-CANDELA VISIBLE NOTIFICATION APPLIANCE (CEILING MOUNT)

PRODUCT INFORMATION

FEATURES:

- UL LISTED TO STANDARD 1971
- ADA COMPATIBLE
- SYNCHRONIZATION FLASH RATE MODE FOR USE WITH:
- SEPARATE STROBE SYNCHRONIZATION MODULES THAT ARE AVAILABLE FOR CLASS B OR CLASS A OPERATION
- SEPARATE SMARTSYNC CONTROL MODULES (SCM) THAT PROVIDE CLASS B OR CLASS A OUTPUT FROM CONVENTIONAL NAC INPUTS

SPECIFICATIONS:

- HOUSING DIMENSIONS: 4-3/4" L X 2-5/16" W X 2-5/8" D (121mm X 75mm X 67mm)
- TEMPERATURE RANGE: 32°F TO 122°F (0 TO 50°C)
- HUMIDITY RANGE: 10% TO 93% NON-CONDENSING AT 100°F (38°C)
- TERMINAL BLOCKS FOR 18AWG TO 12AWG; TWO WIRES PER TERMINAL FOR IN/OUT WIRING.

WIRING NOTES:

- NOTIFICATION APPLIANCES ARE RATED PER INDIVIDUAL NAMEPLATE LABEL.
- MAINTAIN CORRECT POLARITY ON TERMINAL CONNECTIONS. DO NOT LOOP WIRES UNDER TERMINALS.
- ALL NAC WIRING CONNECTIONS ARE SUPERVISED AND POWER-LIMITED.
- SEE INSTALLATION INSTRUCTIONS (579-548) FOR ADDITIONAL INFORMATION.

STROBE:

- RATED VOLTAGE RANGE: UL LISTED: 16 VDC TO 33 VDC PER UL 1971
ULC LISTED: 20 VDC TO 30 VDC PER ULC 5526-M878
- FLASH RATE: 1Hz
- SYNCHRONIZED MODE NAC LOADING: MAXIMUM OF 35 SYNCHRONIZED STROBES PER NAC CIRCUIT.

***CURRENT DRAWS REFLECT STROBE FLASHING**

MODEL NUMBER	HOUSING COLOR	LETTERING COLOR	STROBE RATING	16 VDC	18 VDC	24 VDC
4908-9102	RED	WHITE	15cd	75 mA	67 mA	50 mA
			30cd	125 mA	111 mA	83 mA
4908-9104	WHITE	RED	15cd	75 mA	67 mA	50 mA
			30cd	125 mA	111 mA	83 mA
			75cd	233 mA	207 mA	155 mA
			110cd	318 mA	281 mA	211 mA

CEILING MOUNT: (ERCO NO. 512) T-BAR WITH CLIPS AND SCREWS SUPPLIED BY CONTRACTOR. HANDY BOX, 1-1/2" DEEP OR SINGLE GANG BOX, 2-1/2" DEEP SUPPLIED BY OTHERS. SINGLE GANG BOX (WIREMOLD Y57445) 2-1/4" (57mm) SUPPLIED BY OTHERS. 4905-9910 ADAPTER PLATE REQUIRED FOR SURFACE MOUNT WITH HANDY BOX UNLESS USING THE 4905-9926 WIRE GUARD.

FROM FACP 24VDC NON-CODED NOTIFICATION APPLIANCE CIRCUIT OR PRECEDING DEVICE, OR JOHNSON CONTROLS 4905-9914, 9922, OR 9938 SYNC MODULE.

TO ADDITIONAL NOTIFICATION APPLIANCE DEVICE OR RETURN TO FACP FOR STYLE 2 APPLICATION IF LAST DEVICE ON CIRCUIT IN A STYLE 1 APPLICATION PLACE AN END-OF-LINE RESISTOR (RESISTOR VALUE IS FACP DEPENDENT).

MAPNET II ADDRESSABLE CONTROL ZAM 2190-9163

PRODUCT INFORMATION

FEATURES:

- UL LISTED
- FM APPROVED
- CALIFORNIA STATE FIRE MARSHAL LISTING NUMBERS: 2098-9163 CONTROL ZAM: 7300-0026-182
- ZONE ADAPTER MODULES (ZAM) PROVIDE ADDRESSABILITY TO CONVENTIONAL CIRCUITS
- FOR USE WITH JOHNSON CONTROLS MAPNET II COMMUNICATIONS
- NFPA STYLE 4 OR 6 COMMUNICATIONS
- STYLE 4 WIRING MAY BE EITHER "T" TAPPED OR IN/OUT
- DIP SWITCH ADDRESS SELECTION, 8 SWITCHES
- MOUNTING: SURFACE

SPECIFICATIONS:

- DEVICE QTY: 127 MAPNET II DEVICES ON A SINGLE PAIR OF WIRES
- OPERATING TEMPERATURE RANGE: 32° F TO 120° F
- HUMIDITY RANGE: 85% NON-CONDENSING @ 86° F
- CONTROL ZAM RELAY CONTACTS ARE RATED AT: .5A @ 120 VAC OR 2A @ 28 VDC, RESISTIVE
- SUPERVISORY DC CURRENT: 10 mA } MAX LOAD PER ZAM
- ALARM DC CURRENT: 40 mA

DESCRIPTION:

CONTROL ZAMS ARE USED TO PROVIDE ADDRESSABLE CONTROL FUNCTIONS SUCH AS ELEVATOR CAPTURE, HVAC CONTROL, PRESSURIZATION FAN CONTROL, DAMPER CONTROL.

WIRING:

- ALL WIRING TO COMPLY WITH LOCAL CODE.
- CONDUCTORS MUST TEST FREE OF ALL GROUNDS.
- MAPNET II LINES ARE TO BE #18 AWG TWISTED SHIELDED PAIR (CONSULT SIRT SALES ENGINEERING FOR EXCEPTIONS).
- MAXIMUM ALLOWABLE LINE RUN FROM 4020 OR 4100 OR 4120 TO FARTHEST DEVICE NOT TO EXCEED 2500 FEET.
- FOR MAXIMUM VOLTAGE DROP, ETC., REFER TO SIRT SALES ENGINEERING'S 4020 OR 4100 OR 4120 FIELD WIRING GUIDE.
- MINIMUM NO. 14 AWG WIRE FOR 28 VDC WIRING, OR TO LOCAL CODE.
- CONTRACTOR WIRING TO RELAY CONTACTS IS UNSUPERVISED. USE NO. 14 AWG, OR TO LOCAL CODE.
- RELAY CONTACTS RATED 2A, 28 VDC. FOR DC LOADS, POWER MUST BE PROVIDED FROM F.A. CONTROL 4020 OR 4100 OR POWER SUPPLY LISTED FOR FIRE PROTECTIVE SIGNALING USE. DERATE CONTROL 4020 OR 4100 OR POWER SUPPLY LISTED CURRENT RATING BY 50% FOR INDUCTIVE LOADING.
- REFER TO INSTALLATION INSTRUCTIONS 575-279 OR 575-592.
- REFER TO FIELD WIRING DIAGRAMS 841-804 OR 841-996.

WIRING DIAGRAMS: SURFACE MOUNTING. (R) MAPNET, (B) SHIELD, (+) 28VDC TO NEXT DC POWERED DEVICE.

2088-9008 SPDT CONTROL RELAY

PRODUCT INFORMATION

FEATURES:

- UL LISTED
- MULTIPLE COIL VOLTAGE INPUTS, DIODE POLARIZED
- SPDT CONTACTS
- RELAY STATUS LED
- METAL ENCLOSURES WITH LED VIEWING PORT
- MOUNTING: WALL, SURFACE

SPECIFICATIONS:

- COIL REQUIREMENT: 0.015A @ 18-35VDC/VAC, 115VAC, 230VAC
- CONTACT RATING: 10.0A @ 115VAC
- TERMINAL BLOCK RATING: UP TO #14AWG
- TEMPERATURE RANGE: -58°F TO +185°F
- DIMENSIONS (METAL ENCLOSURE): 6-1/8" H X 3-1/4" W X 2-1/2" D

DESCRIPTION:

THE 2088-9008 CONTROL RELAY OFFERS SPDT 10 AMP CONTACT WHICH MAY BE OPERATED BY ONE OF FOUR INPUT VOLTAGES. A SINGLE RELAY MAY BE ENERGIZED FROM A VOLTAGE SOURCE OF 18-35 VDC OR VAC, 115VAC, OR 230VAC BY WIRING TO APPROPRIATE INPUT TERMINALS. EACH RELAY CONTAINS A RED LED WHICH INDICATES THE RELAY COIL IS ENERGIZED. THESE DEVICES ARE IDEAL FOR APPLICATIONS WHERE LOCAL CONTACTS ARE REQUIRED FOR SYSTEM STATUS, REMOTE CONTACTS FOR CONTROL OF ELECTRICAL LOADS AND GENERAL PURPOSE SWITCHING.

WIRING:

- ALL WIRING TO COMPLY WITH LOCAL CODE.
- MAINTAIN CORRECT POLARITY
- CONDUCTORS MUST TEST FREE OF ALL GROUNDS.

WIRING DIAGRAMS: SURFACE MOUNTING. SPOT CONTACTS TO AMPS @ 115 VAC. INPUT VOLTAGE: 18-35 VDC AC, 115 VDC AC, 230 VDC AC.

NO.	DATE	REVISION DESCRIPTION	ENGINEER	PROJECT #
28	6/19/19	NODE 2 FACP UPGRADE	JWB	612476312
	7/24/19	GSH 2 RIVER 2ND FLR - RECORD DRAWINGS	SSS	610990525
	8/16/19	GSH 2 RIVER 3RD FLR DAY ROOM - REC. DWGS	SSS	612534326
29	10/21/19	GSH 1 FOREST 1ST FLR START ROOMS	JWB	614633427
	3/19/21	NODE 2 FACP UPGRADE - RECORD DRAWINGS	MAM	612476312
30	2/28/22	AHU REPLACEMENT T1.	SEH	650155620

DRAWINGS REVIEWED BY:
Chad MacCannon, SET
NCEET #09810
Fire Alarm Systems, Level IV

**FIRE ALARM SYSTEM
DETAIL SHEET**

**GOOD SAMARITAN HOSPITAL
EAST/NORTH WING**

407 14TH AVENUE
PUYALLUP, WA

**City of Puyallup
Development & Permitting Services
ISSUED PERMIT**

Building	Planning
Engineering	Public Works
Fire	Traffic

APPROVED BY: EP

DRAWN BY: JCP

DATE: 6-21-2001

SITE NUMBER: 459

SHEET NUMBER: FA-DET-02

PROJECT #	PROJECT #	PROJECT #	PROJECT #	PROJECT #
612476312	610990525	612534326	614633427	612476312
JWB	SSS	SSS	JWB	SSS
RSC	SSS	SSS	MAM	SSS
SSS	SSS	SSS	JWB	SSS
SSS	SSS	SSS	JWB	SSS
SSS	SSS	SSS	JWB	SSS
SSS	SSS	SSS	JWB	SSS
SSS	SSS	SSS	JWB	SSS
SSS	SSS	SSS	JWB	SSS
SSS	SSS	SSS	JWB	SSS

DRAWINGS REVIEWED BY:
 Chad McCann, SET
 NICET #93010
 Fire Alarm Systems, Level IV

FIRE ALARM SYSTEM
ROOF NORTH WING
GOOD SAMARITAN HOSPITAL
EAST/NORTH WING
 407 14TH AVENUE
 PUYALLUP, WA

APPROVED BY: EP
 DRAWN BY: JCP
 DATE: 6-21-2001
 SHEET NUMBER: 459
 SHEET NUMBER: FA-R-01

GENERAL NOTES:

- EXISTING DEVICE LOCATIONS AND WIRING ARE SHOWN LIGHT AND ARE BASED UPON RECORD DRAWING INFORMATION PROVIDED BY OTHERS. FIELD VERIFY ALL LOCATIONS AND CONNECTIONS TO EXISTING EQUIPMENT. CONTRACTOR TO RED LINE AND NOTE ANY AND ALL CHANGES ON THE RECORD DRAWING SET.
- TAP SPEAKERS AT 1/2W, 25V UNLESS OTHERWISE NOTED.

ELECTRICAL CONTRACTOR ASBUILTS

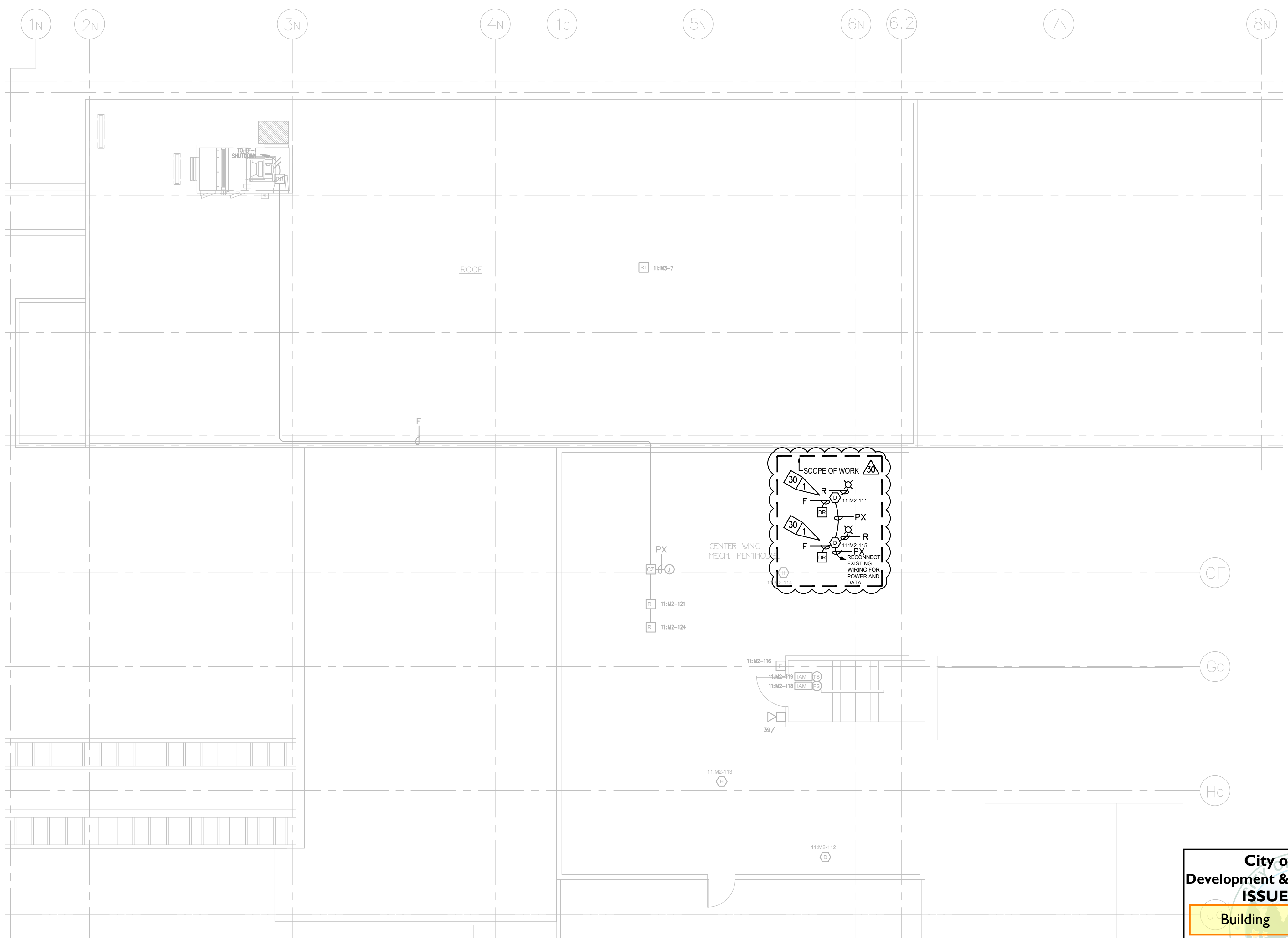
ELECTRICAL CONTRACTOR IS RESPONSIBLE FOR PROVIDING JOHNSON CONTROLS WITH ACCURATE REDLINED DRAWINGS. DRAWINGS SHALL BE REDLINED AS NECESSARY TO SHOW THE FOLLOWING:

- DEVICE LOCATIONS - ADDS/DELETES.
- CIRCUIT NUMBERS - ADDRESSABLE/SIGNAL/AUXILIARY/ZONE.
- WIRE/CONDUIT - ACCURATE ROUTING.
- WIRE FILL - USING WIRE CODE.
- EOL RESISTOR LOCATIONS.

JOHNSON CONTROLS WILL PROVIDE (UPON REQUEST) A BLANK SET OF FLOOR PLANS TO BE REDLINED. JOHNSON CONTROLS WILL INCORPORATE ALL REDLINED CHANGES INTO THE RECORD AUTOCAD SET OF DRAWINGS.

REVISION 30 FLAG NOTES:

30 1 REMOVE EXISTING DEVICE PRIOR TO INSTALLATION. INSTALL NEW IN SAME LOCATION AND MAINTAIN CIRCUIT INTEGRITY.



LEGEND

SYMBOL	DESCRIPTION	MODEL #	BACKBOX#
[SPEAKER]	SPEAKER/STROBE 15cd * SUBSCRIPT INDICATES CIRCUIT #	4903-9356	4" SQ 2 1/8" DEEP W/ 1.5" EXT BY EC
[SPEAKER]	SPEAKER/STROBE 75cd * SUBSCRIPT INDICATES CIRCUIT #	4903-9357	4" SQ 2 1/8" DEEP W/ 1.5" EXT BY EC
[SPEAKER]	SPEAKER/STROBE MULTICANDELA * SUBSCRIPT INDICATES CIRCUIT # & CANDELA SETTING	4906-9151	4" SQ 2 1/8" DEEP W/ 1.5" EXT BY EC
[SPEAKER]	SPEAKER/STROBE 300cd * SUBSCRIPT INDICATES CIRCUIT # & CANDELA SETTING	4903-9197	4" SQ 2 1/4" DEEP W/ 1.5" EXT BY EC
[STROBE]	STROBE 15cd * SUBSCRIPT INDICATES CIRCUIT #	4904-9331	4" SQ 1 1/2" DEEP BY EC
[STROBE]	STROBE 75cd * SUBSCRIPT INDICATES CIRCUIT #	4904-9332	4" SQ 1 1/2" DEEP BY EC
[STROBE]	STROBE 110cd * SUBSCRIPT INDICATES CIRCUIT #	4904-9333	4" SQ 1 1/2" DEEP BY EC
[SPEAKER]	STROBE MULTICANDELA * SUBSCRIPT INDICATES CIRCUIT # & CANDELA SETTING	4906-9101	4" SQ BY EC
[SPEAKER]	SPEAKER/STROBE MULTICANDELA * SUBSCRIPT INDICATES CIRCUIT # & CANDELA SETTING	4906-9153	4" SQ 2 1/8" DEEP W/ 1.5" EXT BY EC
[SPEAKER]	CEILING SPEAKER/STROBE * SUBSCRIPT INDICATES CIRCUIT # & CANDELA SETTING	4906-9154	4" SQ 2 1/8" DEEP W/ 1.5" EXT BY EC
[SPEAKER]	CEILING STROBE, WHITE, MC * SUBSCRIPT INDICATES CIRCUIT # & CANDELA SETTING	4906-9104	SG BY EC
[SPEAKER]	CEILING SPEAKER * SUBSCRIPT INDICATES CIRCUIT #	4902-9721	4" SQ 2 1/2" DEEP W/ 1.5" EXT BY EC
[SPEAKER]	EXISTING SOLENOID	EXISTING	EXISTING
[SPEAKER]	EXISTING WATERFLOW SWITCH	EXISTING	EXISTING
[SPEAKER]	EXISTING TAMPER SWITCH	EXISTING	EXISTING
[SPEAKER]	EXISTING LOW AIR SWITCH	EXISTING	EXISTING
[SPEAKER]	MAINTENANCE DISCONNECT SWITCH	2080-9060	2-GANG 2 3/4" DEEP BY EC
[SPEAKER]	COIL SUPERVISION MODULE	2081-9046	SOLENOID J-BOX
[SPEAKER]	SYNC CUBE	4905-9914	4" SQ 1 1/2" DEEP BY EC
[SPEAKER]	SMART SYNC CONTROL MODULE	4905-9938	4" SQ 2 1/8" DEEP W/ 1.5" EXT BY EC
[SPEAKER]	ADDRESSABLE MANUAL STATION * SUBSCRIPT INDICATES MAPNET#	4099-9001	4" SQ W/SG BY EC
[SPEAKER]	ADDRESSABLE MANUAL STATION * SUBSCRIPT INDICATES MAPNET#	4099-9004	4" SQ W/SG BY EC
[SPEAKER]	SMOKE SENSOR AND BASE * SUBSCRIPT INDICATES MAPNET#	4098-9714	SENSOR 4" OCT BY EC
[SPEAKER]	HEAT SENSOR AND BASE * SUBSCRIPT INDICATES MAPNET#	4098-9733	SENSOR 4" OCT BY EC
[SPEAKER]	DUCT DETECTOR * SUBSCRIPT INDICATES MAPNET# * SUBSCRIPT INDICATES SAMPLE TUBE LENGTH	4098-9756	SELF-CONTAINED
[SPEAKER]	IN-DUCT DETECTOR * SUBSCRIPT INDICATES MAPNET# * SUBSCRIPT INDICATES DUCT ADAPTER	4098-9751	SELF-CONTAINED
[SPEAKER]	REMOTE LED w/ TEST	2088-9806	SG BY EC
[SPEAKER]	XAD DUCT SENSOR * SUBSCRIPT INDICATES DEVICE ADDRESS	4098-XAD-110	12.625"H X 10.1875"W X 6.5"D ACCESSORIES(SEE DATASHEET)
[SPEAKER]	DUCT DETECTOR RELAY	4098-9843	4" SQ 2 1/8" DEEP W/ COVER BY EC
[SPEAKER]	REMOTE RELAY	2088-9010	SELF-CONTAINED
[SPEAKER]	MR 101/C RELAY	2088-9008	SELF-CONTAINED
[SPEAKER]	INDIVIDUAL ADDRESSABLE MODULE	4090-9001	SINGLE GANG 2 1/2" DEEP BY EC
[SPEAKER]	ADDRESSABLE SIGNAL IAM	4090-9007	4" SQ 2 1/8" DEEP BY EC
[SPEAKER]	DUAL CONTACT RELAY IAM	4090-9008	4" SQ 2 1/8" DEEP BY EC
[SPEAKER]	RELAY IAM	4090-9002	4" SQ 2 1/8" DEEP BY EC
[SPEAKER]	SMOKE/FIRE DAMPER	BY OTHERS	BY OTHERS
[SPEAKER]	CONTROL ZAM * SUBSCRIPT INDICATES MAPNET#	2190-9163	4" SQ 2 1/2" DEEP W/ 1.5" EXT BY EC
[SPEAKER]	SIGNAL ZAM * SUBSCRIPT INDICATES MAPNET#	2190-9161	4 11/16" BY 2 1/8" DEEP EXT BY EC
[SPEAKER]	DOOR HOLDER	2088-9608	SG BY EC
[SPEAKER]	J-BOX	PROVIDED BY EC	
[SPEAKER]	SYNCH MODULE	4905-9938	4" SQ 2 1/8" DEEP BY EC
[SPEAKER]	J-BOX	PROVIDED BY EC	BY EC
[SPEAKER]	MINIPLX TRANSPONDER	4100	52.125"H X 25.75"W X 6.75"D
[SPEAKER]	4100U TRANSPONDER	4100-9600	56"H X 24"W X 8.375"D
[SPEAKER]	ALTRONIC PWR SUPPLY	AL1024ULACMGBJ	BY OTHERS
[SPEAKER]	AES RADIO	7788F-U LP	BY OTHERS
[SPEAKER]	SUPERVISED IAM	4090-9001	4" SQ 2 1/8" DEEP BY EC
[SPEAKER]	NAC PANEL	4009-9201	13.5"H x 16.5"W x 3"D
[SPEAKER]	FIRE ALARM CONTROL PANEL	4100-9111	EXISTING

WIRE CODE

ALL WIRING TO MEET CURRENT NATIONAL ELECTRIC CODE ARTICLE 760, 300, 310, 370, 725 AND ALL RELATED SECTION CODE REQUIREMENTS

LETTER	QTY	COLOR/TYPER	SIZE	FUNCTION
A	2	ORANGE/BLACK THHN	16	ZONE
C	2	RED/BLUE THHN	14	STROBE
D	4	RED/BLUE THHN	14	STROBE LOOP
E	2	BROWN/YEL THHN	14	DOOR HOLDER
F	2	ORANGE/BLUE THHN	14	FAN SHUTDOWN
J	1	TW/SHLD. PAIR	14	SPEAKER
K	2	TW/SHLD. PAIR	14	SPEAKER LOOP
M	2	WESTPENN D975	18	TRANSPONDER COMM.
	2	TW/SHLD. PAIR	14	AUDIO RISER
P	2	RED/BLACK THHN	14	24VDC POWER
R	4	BLUE/WHITE THHN	16	REMOTE LED w/ TEST
S	2	RED/BLUE THHN	16	SUP. RELEASING CIRCUIT
X	1	WEST PENN D975	18	ADDR. MAPNET DATA LINE

NOTES:
 TAG AND IDENTIFY ALL SIGNAL CIRCUIT WIRES WITH SIGNAL CIRCUIT NUMBER.

City of Puyallup
Development & Permitting Services
ISSUED PERMIT

Building	Planning
Engineering	Public Works
Fire	Traffic

ROOF NORTH WING
 SCALE 1/8"=1'-0"