

Use cover for plumbing where left inside the wall. Do not tape and texture over plumbing. Contact City Facilities to shut of water to the space. - Purpose is to reduce the amount of dead end plumbing that will not be used.

PRCTI20220309

City of Puyallup
Development & Permitting Services
ISSUED PERMIT

Building	Planning
Engineering	Public Works
Fire	Traffic

MC CONSTRUCTION
CONSULTANTS

25 Years of Unique Designing • Building • Craftsmanship

Residential • Commercial

Phone: 360.456.6307 Fax: 360.923.9763

Custom Homes Are Our Specialty

Cont. #MCCONC100008A

City of Puyallup
Building
REVIEWED
FOR
COMPLIANCE

RayC
02/24/2022
4:34:04 PM

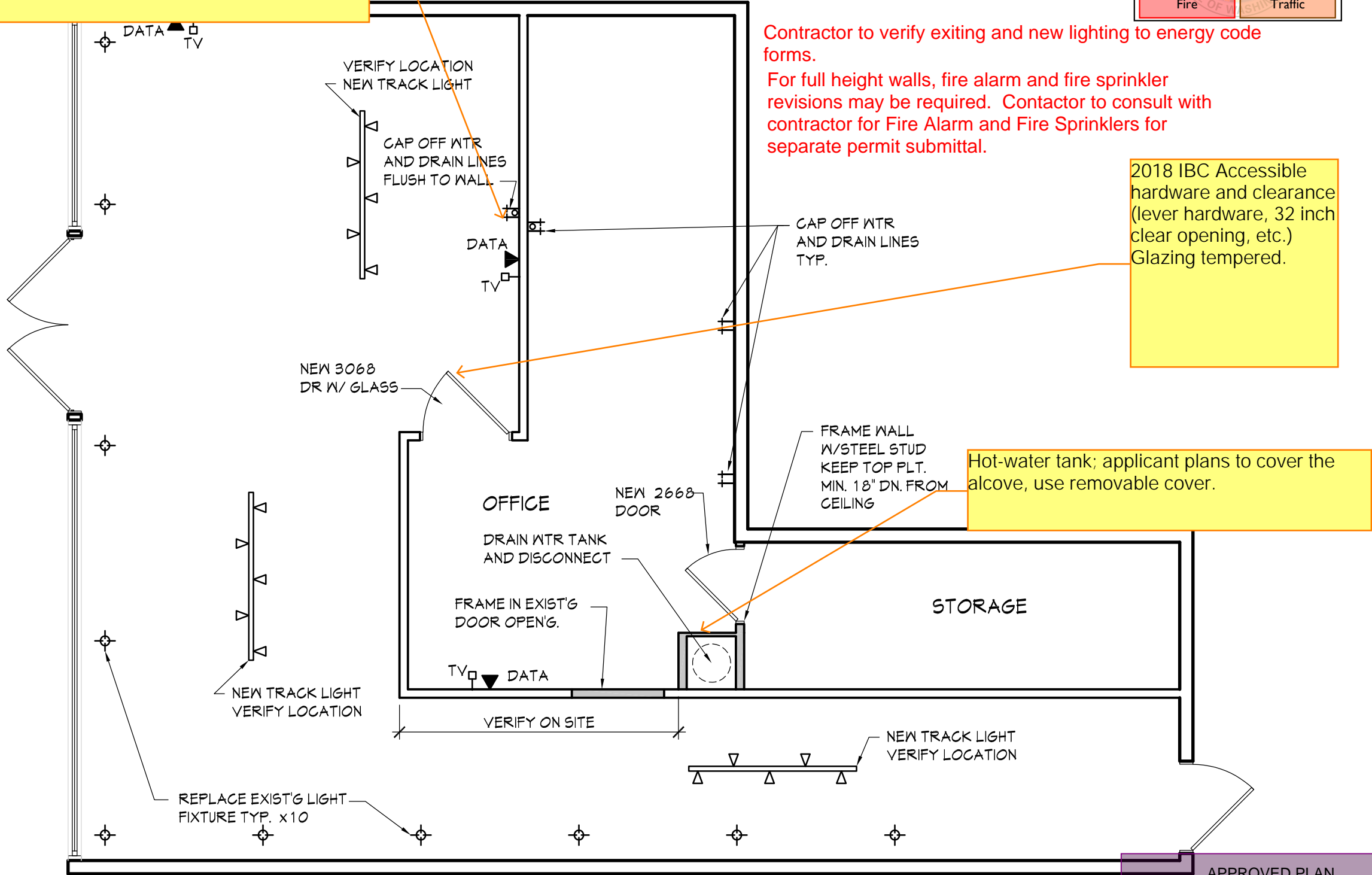
CITY OF PUYALLUP
STATE OF WASHINGTON

City of Puyallup
Development
Engineering
APPROVED

See permit
for additional
requirements.

Linda Lian
03/07/2022
9:52:33 AM

CITY OF PUYALLUP
STATE OF WASHINGTON



FLOOR PLAN

SCALE: 1/4" = 1'-0"

APPROVED PLAN
CITY OF PUYALLUP
PLANNING DIVISION

APPROVED BY: NComstock

DATE: 03/07/2022

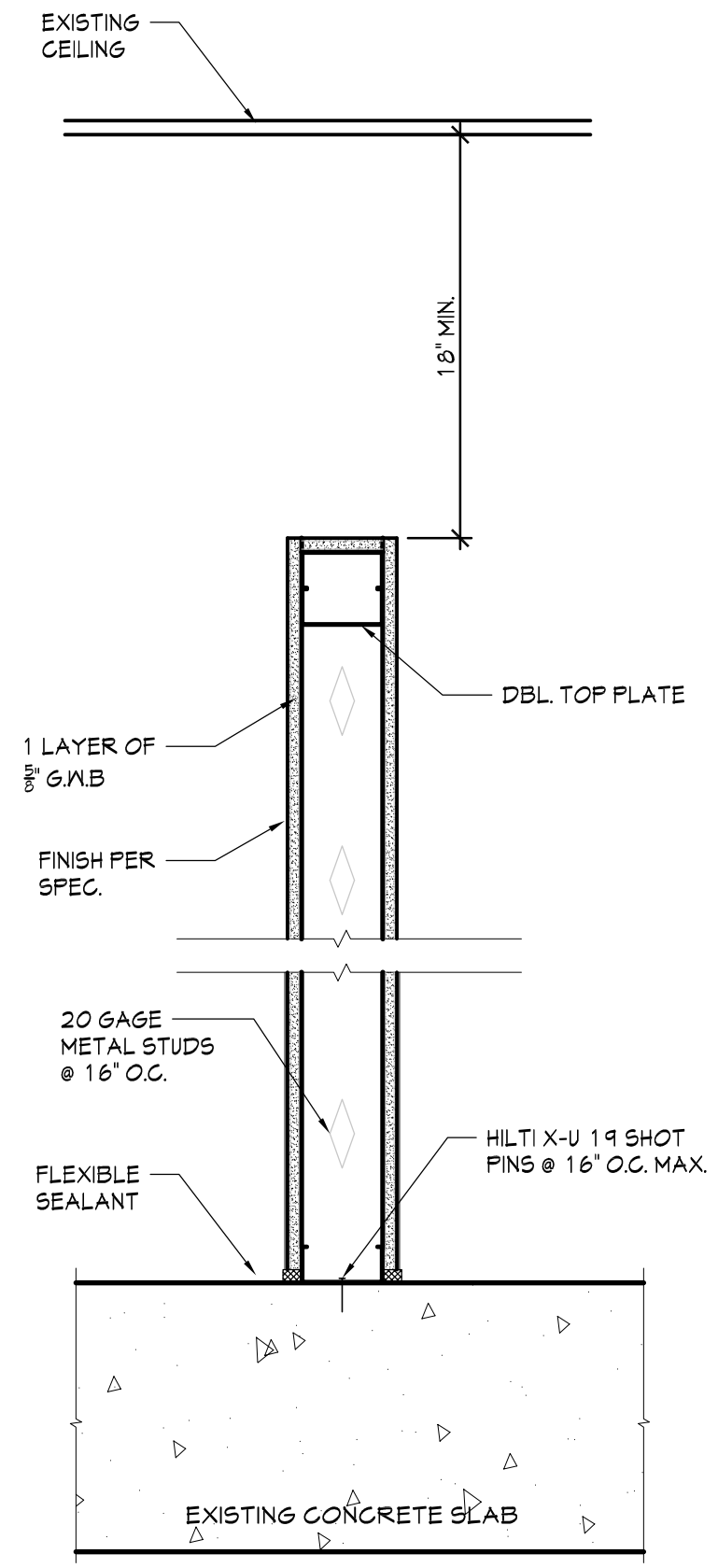
CASE NO.: PRCTI20220309

CONDITIONS: N/A

PROJECT
EZRA SALES OFFICE REMODEL
333 S. MERIOLIAN, STR. #105
PUYALLUP, WA.


DATE
02-10-22

A1.0



1 TYP. 3 5/8" STEEL INT. WALL SECTION
SCALE: 1 1/2" = 1'-0"

City of Puyallup Development & Permitting Services ISSUED PERMIT			
Building	Planning		
Engineering	Public Works		
Fire	Traffic		

**MC CONSTRUCTION
CONSULTANTS**

25 Years of Unique Designing • Building • Craftsmanship

Residential • Commercial

Phone: 360.456.6307 Fax: 360.923.9763

Custom Homes Are Our Specialty

Cont. #MCCONC1000BA

PROJECT

EZRA SALES OFFICE REMODEL
333 S. MERIOLIAN, STR. # 105
PUYALLUP, WA.

DATE
02-10-22

A2.0