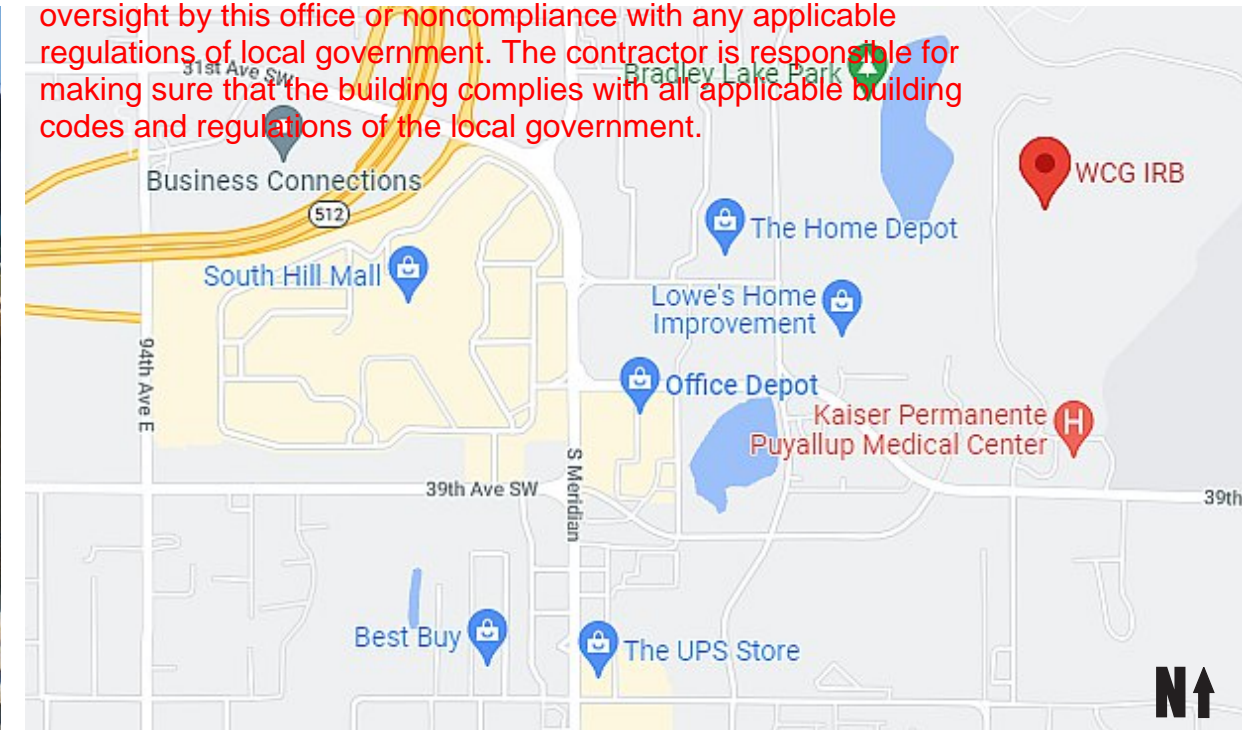


① Photo Overlay
Scale: NTS

Approval of submitted plans is not an approval of omissions or oversight by this office or noncompliance with any applicable regulations of local government. The contractor is responsible for making sure that the building complies with all applicable building codes and regulations of the local government.



OSAGE SIGNS LLC

15107 50th Ave E
Tacoma WA 98446
206-396-1036
osagesigns@hotmail.com
253-709-1096
osagesigns.db@hotmail.com

This original artwork is protected under Federal Copyright Laws. Make no reproduction of this design concept without permission from OSAGE SIGNS LLC

Customer Number

0694 Customer Number
140389 Quote Number

File Name

WCG-IRB_140389 R4

Salesperson

Jeff Kehm

Drawn By

David Benson

Date

Revisions

- Approved
- Approved With Changes Noted

Customer Signature

Date

Landlord Signature

Date

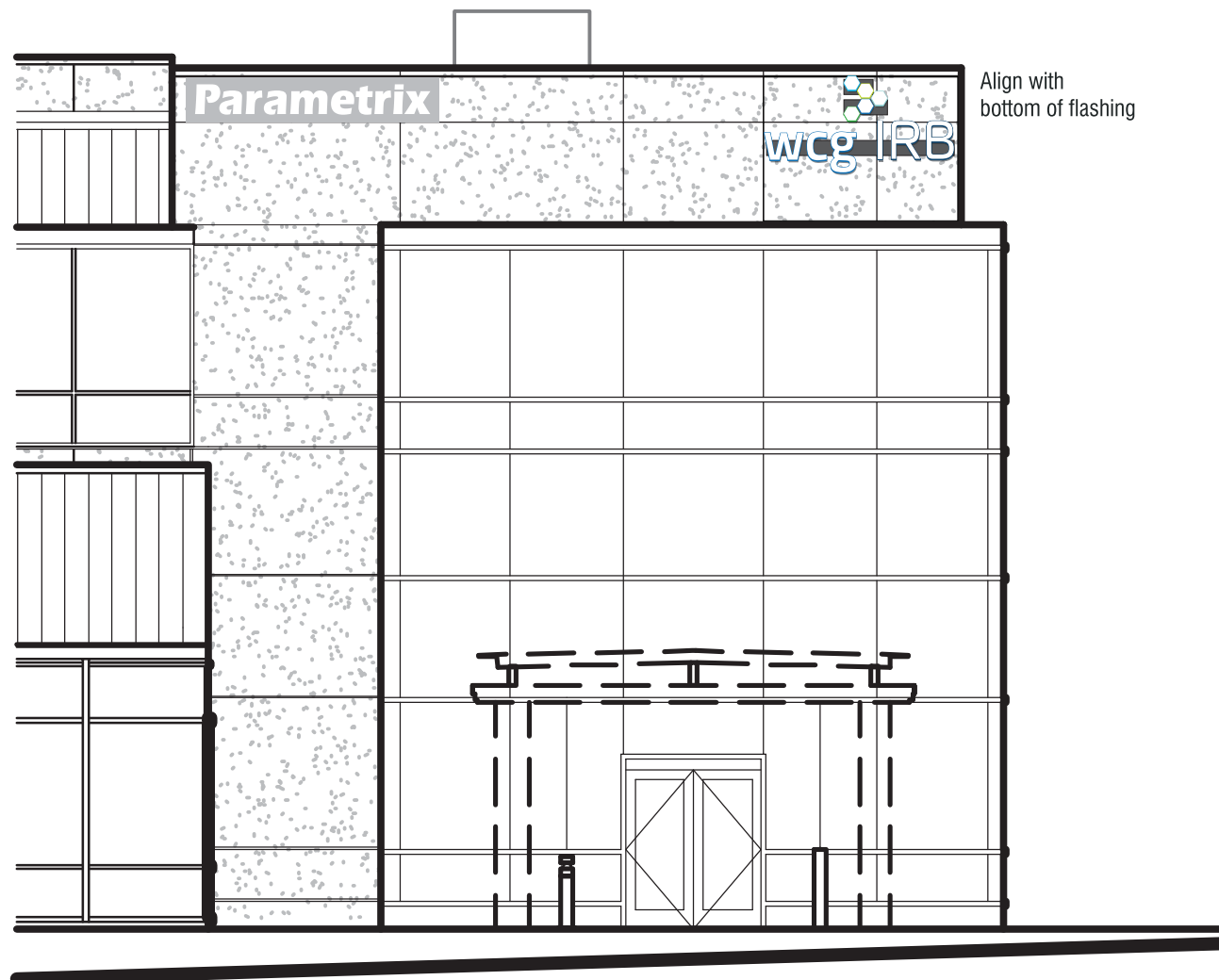
**City of Puyallup
Development & Permitting Services
ISSUED PERMIT**

Building	Planning
Engineering	Public Works
Fire	Traffic

This drawing is intended to provide a reasonable representation of the final manufactured article. Fasteners and seams in materials may not be represented exactly as they will be fabricated. Colors on prints may not accurately depict specific colors.

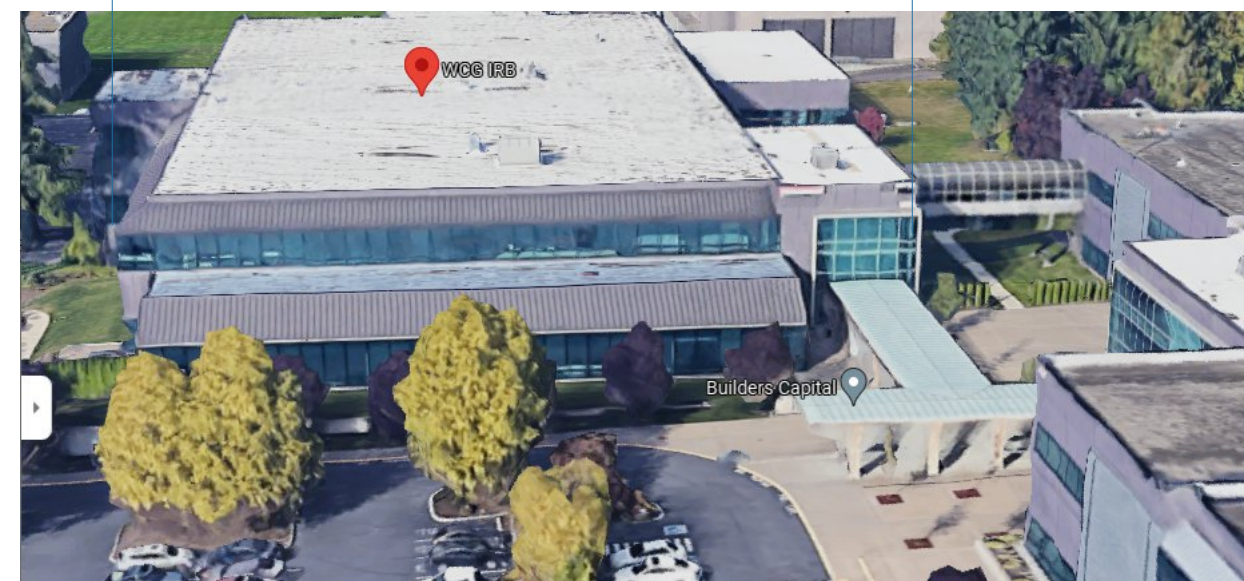
FULL SIZED LEDGIBLE COLOR PLANS ARE REQUIRED TO BE PROVIDED BY THE PERMITTEE ON SITE FOR ALL INSPECTIONS MIN. PLAN SIZE 11" X 17"

**City of Puyallup
Building
REVIEWED
FOR
COMPLIANCE**
DLeahy
03/10/2022
12:01:25 PM



② Partial Elevation View
Scale: 1/8" = 1'-0"

Approximate linear frontage
200'



**WCG IRB
1019 39th Ave SE #120
Puyallup, WA 98374**

PRSG20220368



OSAGE SIGNS LLC

15107 50th Ave E
Tacoma WA 98446
206-396-1036

osagesigns@hotmail.com

253-709-1096

osagesigns.db@hotmail.com

This original artwork is protected under Federal Copyright Laws. Make no reproduction of this design concept without permission from OSAGE SIGNS LLC

Customer Number

0694 Customer Number
140389 Quote Number

File Name

WCG-IRB_140389 R4

Salesperson

Jeff Kehm

Drawn By

David Benson

Date

Revisions

- [] Approved
- [] Approved With Changes Noted

Customer Signature

Date

Landlord Signature

Date

City of Puyallup Development & Permitting Services			
ISSUED PERMIT			
Building	Planning	Engineering	Public Works
Fire	Traffic		

This drawing is intended to provide a reasonable representation of the final manufactured article. Fasteners and seams in materials may not be represented exactly as they will be fabricated. Colors on prints may not accurately depict specific colors.

White
MAP N202

Blue
(TBD)

Dark Blue
(TBD)

Bright Blue
(TBD)

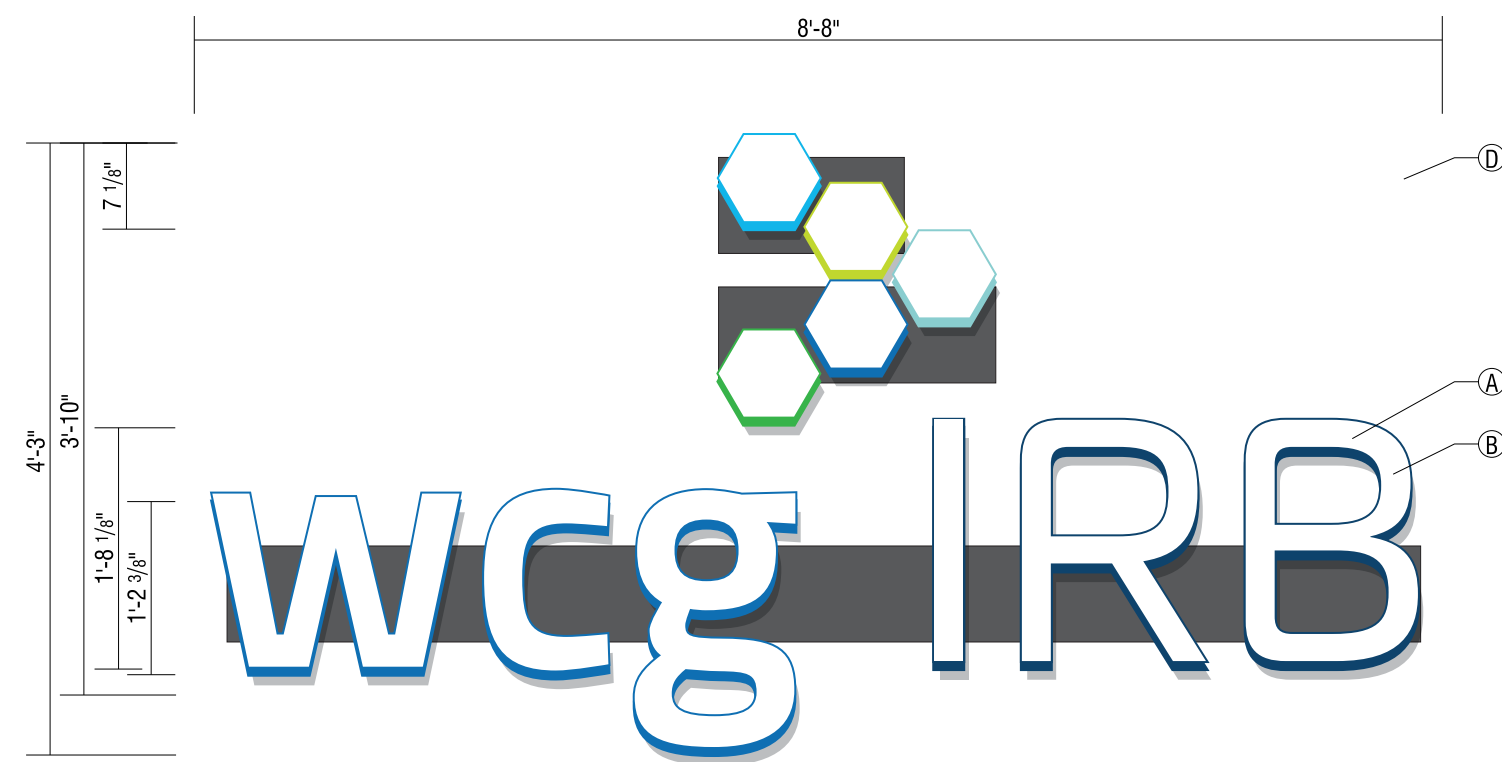
Light Teal
(TBD)

Light Green
(TBD)

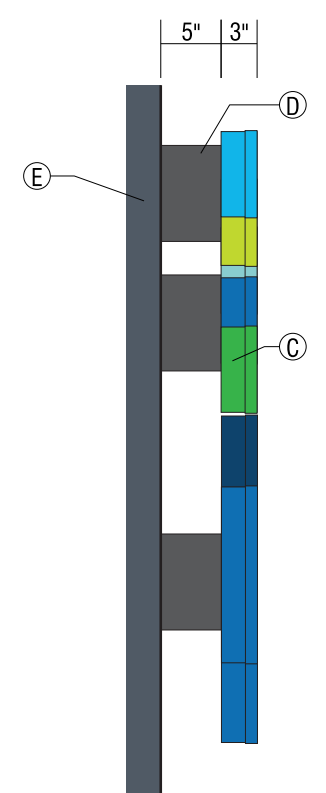
Green
(TBD)

To Match Wall Color
(TBD)

④ Color Palette



① Front View - Sign A Option 1
Scale: 3/4" = 1'-0"



② End View
Scale: 3/4" = 1'-0"

Manufacture and install one (1) set of illuminated trim cap channel letters mounted to oversized raceway.

- ① "wcg IRB" letters and logo elements to be trim cap channel construction with .040" channel coil and .063" backs with 1" trim cap edge. Paint returns Blues and greens (TBD).
- ② Faces to be white acrylic with 1" trim cap edge.
- ③ Internally illuminate letters and logo elements with Sloan Prism 6500K white LEDs.
- ④ Electrical raceways to be 8" x 5" aluminum, painted to match wall color (TBD).
- ⑤ Mount raceways flush to building fascia panel wall with toggle fasteners. Power supplies are mounted within raceways.

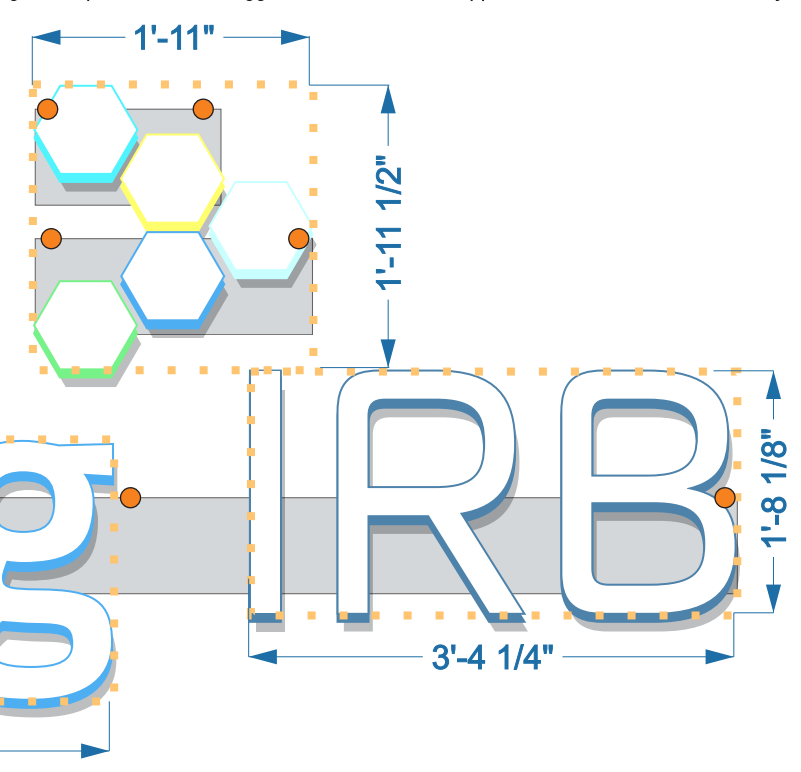
APPROVED PLAN
CITY OF PUYALLUP
PLANNING DIVISION

APPROVED BY: NComstock

DATE: 03/16/2022

CASE NO.: PRSG20220368

CONDITIONS: N/A



Sign area:
 $1.92 \times 1.96 = 3.75$
 $1.78 \times 4.05 = 7.22$
 $+ 1.71 \times 3.35 = 5.63$
 Total = 16.6 sq ft

Attachment:
 3/8" toggle bolts
 (or similar fastener dependent on wall construction)
 through facade and 1/2" plywood.

Total 8 attachments points, approximate attachments shown with ●.



Existing sign to be removed

③ Existing Conditions
Scale: 3/4" = 1'-0"

PRSG20220368