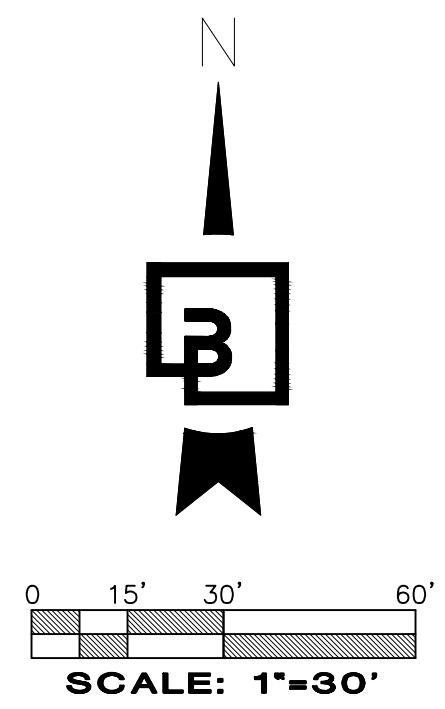


LIMITED ADA TOPOGRAPHIC SURVEY



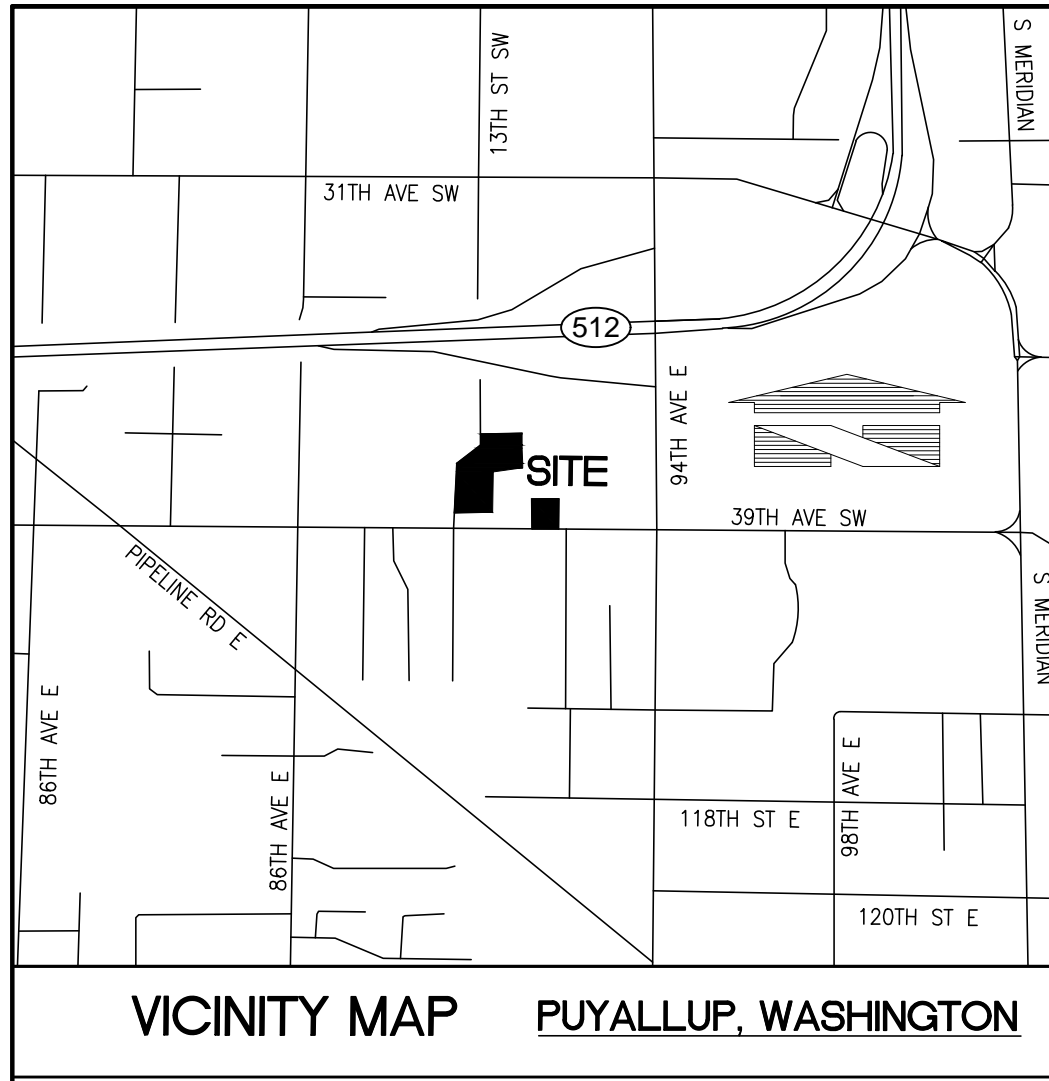
No.	Date	By	Ckd.	Appr.	Revision
3	1/5/22	KJR	KX		UPDATED SE ENTRANCE UTILITY LOCATIONS TO NAVD83
1	3/10/20	KJR	MM		CONVERT TO WAB88

Title: **LIMITED ADA TOPOGRAPHIC SURVEY**
PTN OF THE SE1/4, OF THE SW1/4 OF SEC. 4,
TWP. 19 N., RGE 4 EAST, W. M.
CITY OF PUYALLUP PIERCE COUNTY
STATE OF WASHINGTON

COSTCO WHOLESALE

Barghausen Consulting Engineers, Inc.
18215 72nd Avenue South
Kent, WA 98032
425.251.6222
barghausen.com

Job Number
12865
Sheet
1 of 1



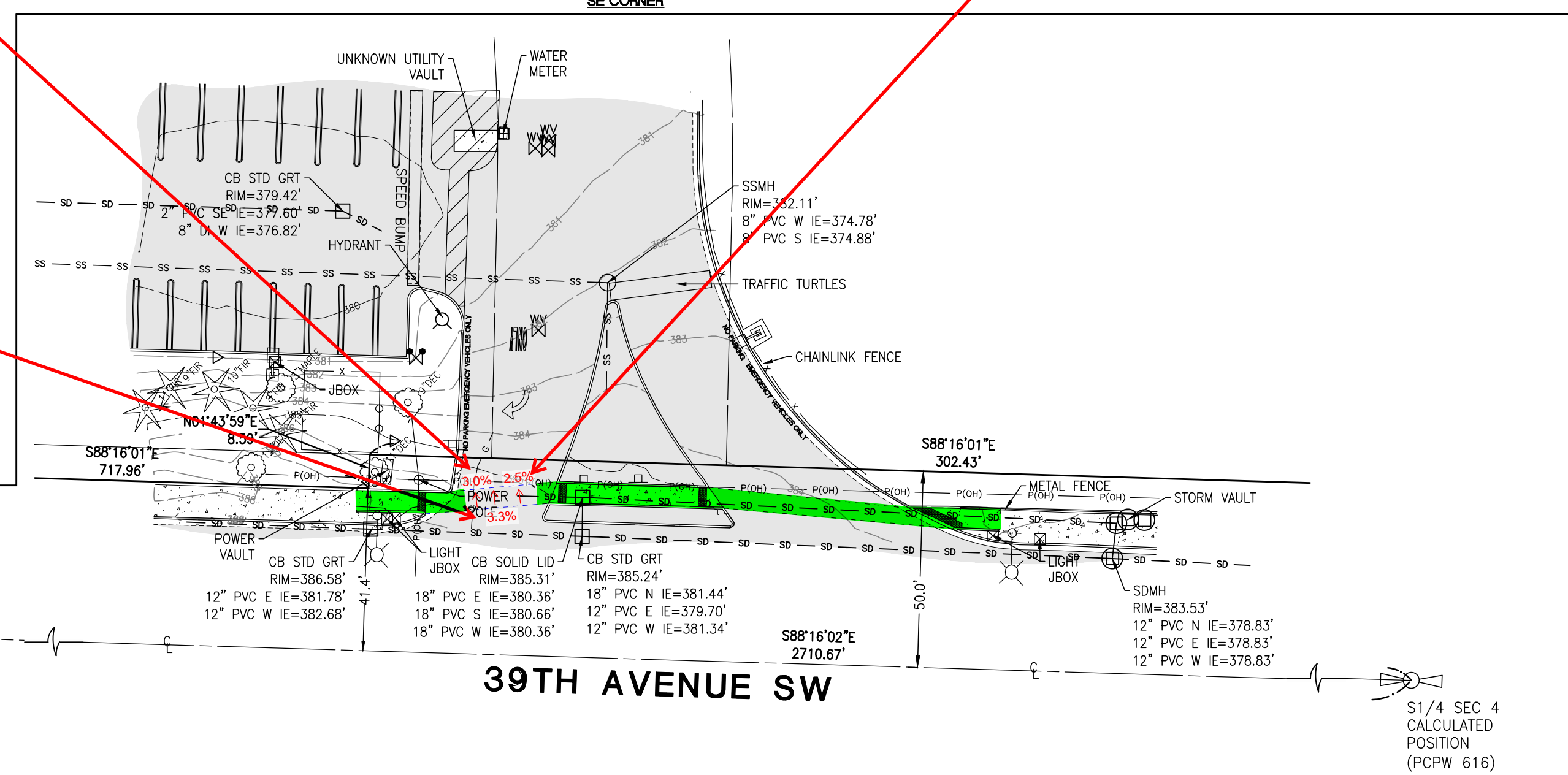
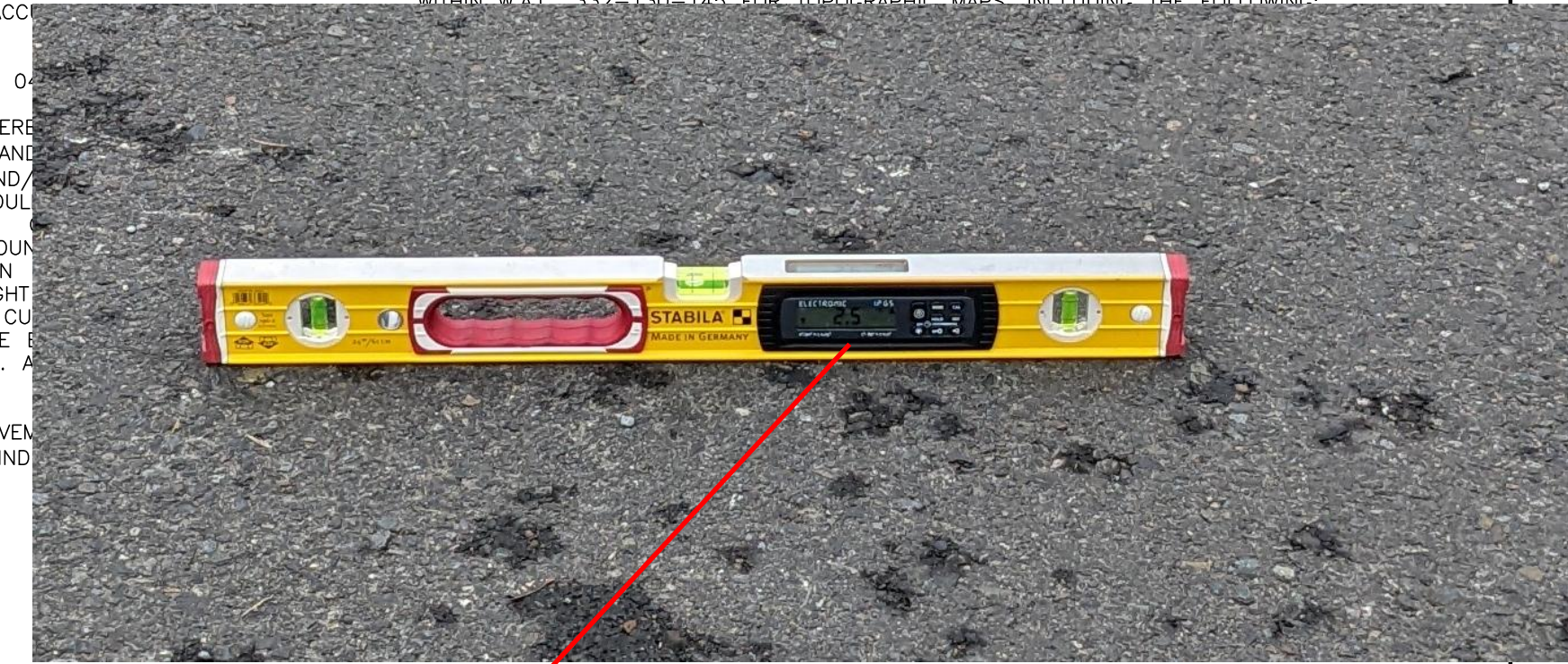
LEGEND

(NOTE: NOT ALL SYMBOLS MAY APPEAR ON THE MAP)

- SURVEY MONUMENT (AS NOTED)
 - SECTION CORNER (AS NOTED)
 - SET REBAR/CAP (LS#45789)
 - FOUND REBAR/CAP (AS NOTED)
 -
 - MAG/WASHER OR LEAD/TACK (AS NOTED)
 - BENCHMARK
 - LUMINAIRE (LUM.)
 - YARD LIGHT
 - ORNAMENTAL LIGHT
 - TRAFFIC SIGNAL LIGHTS
 - POWER METER
 - POWER POLE
 - JUNCTION BOX (AS NOTED)
 - SIGNAL J-BX
 - TELEPHONE MANHOLE
 - CATCH BASIN (CB)
 - STORM MANHOLE (SMH)
 - SANITARY SEWER MANHOLE (SSMH)
 - CLEANOUT (AS NOTED)
 - GAS METER
 - GAS VALVE
 - WATER VALVE (WV)
 - FAUCET
 - FIRE HYDRANT (FH) / CONNECTION (FDC)
 - WATER MANHOLE
 - WATER METER
 - BLOW-OFF / AIRVAC
 - MONITOR WELL
 - SIGN
 - IRRIGATION SPRINKLER
 - DIRECTIONAL ARROW
 - HANDICAP
 - CHAIN LINK FENCE
 - WOOD FENCE
 - HOCKWIRE FENCE
 - SILT FENCE
 - METAL/IRON FENCE
 - GUARD RAIL/CABLE FENCE
 - WATER LINE
 - GAS LINE
 - STEAM LINE
 - TELEPHONE LINE (OH) OR (UG)
 - POWER LINE (OH) OR (UG)
 - STORM LINE
 - SEWER LINE
 - ROCKERY
 - KEYSTONE WALL
 - DECIDUOUS TREE
 - CONIFEROUS TREE
 - TREE DRILINE
 - CONCRETE
 - GRAVEL/SAND (AS NOTED)
 - ASPHALT
 - BUILDING LINE
- ABBREVIATIONS**
- (RF) REFERENCE SURVEYS
 - (OH) OVERHEAD
 - (UG) UNDERGROUND
 - (TP) TYPICAL
 - (C) CALCULATED
 - (M) MEASURED
 - (DL) DRILINE RADIUS
 - (X" TREE) DIAMETER OF TREE

SURVEY NOTES

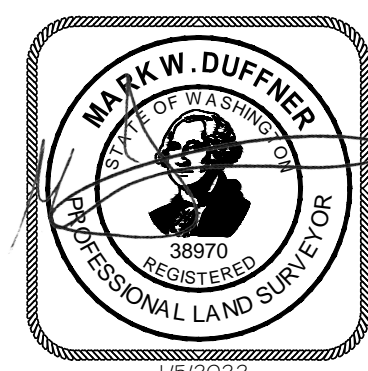
- HORIZONTAL DATUM IS NAD 1983 (91), BASED ON INFORMATION PUBLISHED BY PIERCE COUNTY PUBLIC WORKS (PCPW). WE HELD THE SW CORNER OF SECTION 4 (PCPW 617) FOR POSITION AND A BEARING OF SOUTH 88°16'02" EAST TOWARD THE SOUTH 1/4 CORNER OF SECTION 4 (PCPW 616).
- VERTICAL DATUM IS NAVD83. WE HELD PIERCE COUNTY BENCHMARK NO. 23-3, NE CORNER BOTTOM STEP TO RESIDENCE 9024 112TH STREET EAST, CONVERTED ELEVATION = 396.41 FEET, PIERCE COUNTY BENCHMARK NO. 17A-SA WAS MEASURED FOR NGVD ELEVATION CONVERSION VALUE. TO TRANSLATE NAVD83 ELEVATIONS TO NGVD29 VERTICAL DATUM, ADD 3.51 TO ALL ELEVATION VALUES.
- ALL TITLE INFORMATION SHOWN ON THIS MAP HAS BEEN EXTRACTED FROM FIRST AMERICAN TITLE INSURANCE COMPANY COMMITMENT NO. NCS-252656-WA1, DATED AUGUST 23, 2006. IN PREPARING THIS MAP, BARGHAUSEN CONSULTING ENGINEERS, INC. HAS CONDUCTED NO INDEPENDENT TITLE SEARCH NOR IS BARGHAUSEN CONSULTING ENGINEERS, INC. AWARE OF ANY TITLE ISSUES AFFECTING THE SURVEYED PROPERTY OTHER THAN THOSE SHOWN ON THE MAP AND DISCLOSED BY THE REFERENCED FIRST AMERICAN COMMITMENT. BARGHAUSEN CONSULTING ENGINEERS, INC. HAS RELIED WHOLLY ON FIRST AMERICAN'S REPRESENTATIONS OF THE TITLE'S CONDITION TO PREPARE THIS SURVEY AND THEREFORE BARGHAUSEN CONSULTING ENGINEERS, INC. QUALIFIES THE MAP'S ACCURACY TO THAT EXTENT.
- TAX PARCEL NUMBER ON THE SUBJECT PROPERTY IS: 02-01-30-0100-0100-0000
- UNDERGROUND UTILITIES AND FEATURES DEPICTED HEREON ARE BASED ON FIELD OBSERVATION, MARKINGS, DEVELOPMENT PLANS, AND/OR AVAILABLE RECORD DOCUMENTS ONLY. THE TRUE LOCATION, NATURE AND/OR EXISTENCE OF BELOW GROUND FEATURES, DETECTED OR UNDETECTED, SHOULD BE VERIFIED.
- THE PURPOSE OF THIS LIMITED TOPOGRAPHIC SURVEY IS TO PROVIDE A DETAILED MAP OF THOSE SPECIFIC AS CONSTRUCTED IMPROVEMENTS SHOWN HEREON. ELEMENTS AND FEATURES DEPICTED HEREON SATISFY THE REQUIREMENTS STATED WITHIN W.A.C. 332-130-145 FOR TOPOGRAPHIC MAPS, INCLUDING THE FOLLOWING:
 - PARKING STALL COUNT
 - REGULAR STALLS: 715
 - HANDICAP STALLS: 27
 - TOTAL: 742
- THIS IS A FIELD TRAVERSE SURVEY. A TOPCON GT ROBOTIC TOTAL STATION WAS USED TO MEASURE THE ANGULAR AND DISTANCE RELATIONSHIPS BETWEEN THE CONTROLLING MONUMENTATION AS SHOWN. CLOSURE RATIOS OF THE TRAVERSE MET OR EXCEEDED THOSE SPECIFIED IN WAC 332-130-090. ALL INSTRUMENTS AND EQUIPMENT HAVE BEEN MAINTAINED IN ADJUSTMENT ACCORDING TO MANUFACTURERS' SPECIFICATIONS.
- UNDERGROUND UTILITIES AND FEATURES DEPICTED HEREON ARE BASED ON FIELD OBSERVATION, MARKINGS, DEVELOPMENT PLANS, AND/OR AVAILABLE RECORD DOCUMENTS ONLY. THE TRUE LOCATION, NATURE AND/OR EXISTENCE OF BELOW GROUND FEATURES, DETECTED OR UNDETECTED, SHOULD BE VERIFIED.
- THE PURPOSE OF THIS LIMITED TOPOGRAPHIC SURVEY IS TO PROVIDE A DETAILED MAP OF THOSE SPECIFIC AS CONSTRUCTED IMPROVEMENTS SHOWN HEREON. ELEMENTS AND FEATURES DEPICTED HEREON SATISFY THE REQUIREMENTS STATED WITHIN W.A.C. 332-130-145 FOR TOPOGRAPHIC MAPS, INCLUDING THE FOLLOWING:
 - UNDERGROUND UTILITY LOCATIONS SHOWN HEREON
 - UNDERGROUND CONNECTIONS ARE SHOWN AS STRAIGHT
 - UTILITY LOCATIONS BUT MAY CONTAIN BENDS OR CURVES
 - UNDERGROUND LOCATIONS SHOWN HEREON MAY HAVE BEEN
 - RECORDED, BARGHAUSEN CONSULTING ENGINEERS, INC. ASSURES
 - THE ACCURACY OF PUBLIC RECORDS.
- THIS SURVEY REPRESENTS VISIBLE PHYSICAL IMPROVEMENTS SHOWN ON JANUARY 24, 2020. ALL SURVEY CONTROL INSTRUMENTATION RECOVERED FOR THIS PROJECT IN APRIL 1999.
- ALL DISTANCES ARE IN FEET (U.S. SURVEY FEET).
- SITE ADDRESS: 1201 39TH AVE SW, PUYALLUP WA



SURVEYOR'S CERTIFICATE:

THIS IS TO CERTIFY THAT THIS MAP AND THE SURVEY UPON WHICH IT IS BASED WERE MADE BY ME OR UNDER MY DIRECTION AND CORRECTLY REFLECTS THE CONDITIONS OF THIS SITE AS OF THE DATE OF THE FIELD SURVEY.

MARK W. DUFFNER, P.L.S.
WASHINGTON REGISTRATION NO. 38970
1/5/2022
DATE



SW COR SEC 4 FND MON
IN CASE
RECORD POSITION AS
MEASURED IN MARCH 1999

39TH AVENUE SW

S1/4 SEC 4
CALCULATED
POSITION
(PCPW 616)