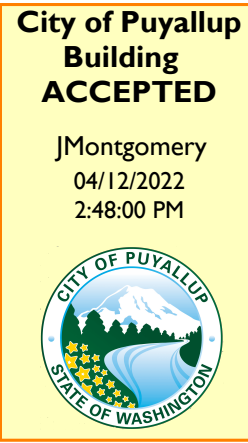


PRCA20220091

FIXTURE SCHEDULE							
TYPE	DESCRIPTION	VOLTS	WATTS PER FIXTURE	LAMPS		MOUNTING	
				LUM/W	CODE	TYPE	HEIGHT
F1	21' LED DIRECT/INDIRECT LINEAR	120V	305			LED SUPD.	TBD
F1E	SAME AS 'F1' EXCEPT W/INTEGRAL EMERGENCY BATTERY	120V	305			LED SUPD.	TBD
F2	RECESSED LED DOWNLIGHT	120V	36			LED REC.	CEILING
F2E	SAME AS 'F2' EXCEPT W/INTEGRAL EMERGENCY BATTERY	120V	36			LED REC.	CEILING
F3	LED MONOPOINT TRACK LIGHT	120V	14			LED SURF.	CEILING
F5	SUSPENDED 4' LED LINEAR	120V	58			LED SUPD.	TBD
F6	RECESSED LINEAR LED SLOT LIGHT	120V	101			LED REC.	CEILING
F7	RECESSED LED WALL WASHER	120V	36			LED REC.	CEILING
F8	RECESSED LED DOWNLIGHT	120V	12			LED REC.	CEILING
F8E	SAME AS 'F8' EXCEPT W/INTEGRAL EMERGENCY BATTERY	120V	12			LED REC.	CEILING
F9	RECESSED LED TROFFER	120V	29			LED REC.	CEILING
F12	LED MONOPOINT TRACK LIGHT	120V	14			LED SURF.	CEILING
F13	4' LED WRAP	120V	213			LED SURF.	CEILING
F15	LED SURFACE STRIP	120V	45			LED SURF.	CEILING
F15E	SAME AS 'F15' EXCEPT W/ INTEGRAL EMERGENCY BATTERY	120V	45			LED SURF.	CEILING
F18	LED WALL PACK	120V	32			LED WALL	9' AFF
F20	LED SUSPENDED 8' STRIP	120V	54			LED SUPD.	TBD
F20E	SAME AS 'F20' EXCEPT W/INTEGRAL EMERGENCY BATTERY	120V	54			LED SUPD.	TBD
F21	LED SUSPENDED 8' STRIP	120V	84			LED SUPD.	TBD
F21E	SAME AS 'F21' EXCEPT W/INTEGRAL EMERGENCY BATTERY	120V	84			LED SUPD.	TBD
PEN-1	LARGE LED PENDANT	120V	45			LED SUPD.	TBD
PEN-2	LED CYLINDER PENDANT	120V	17			LED SUPD.	TBD
X2	EXIT COMB WITH TWIN HEADS	120V	5			LED WALL	ABOVE DOOR

ELECTRICAL SHEETS APPROVED FOR 2018 WSEC ONLY SEE SHEET 4/4 FOR COMPLIANCE



City of Puyallup  
Development & Permitting Services  
ISSUED PERMIT

Building	Planning
Engineering	Public Works
Fire	Traffic



Separate electrical permit is required with Washington State Department of Labor & Industries. <https://lni.wa.gov/licensing-permits/electrical/electrical-permits-fees-and-inspections> or Licensing information: Call 1-800-647-0982

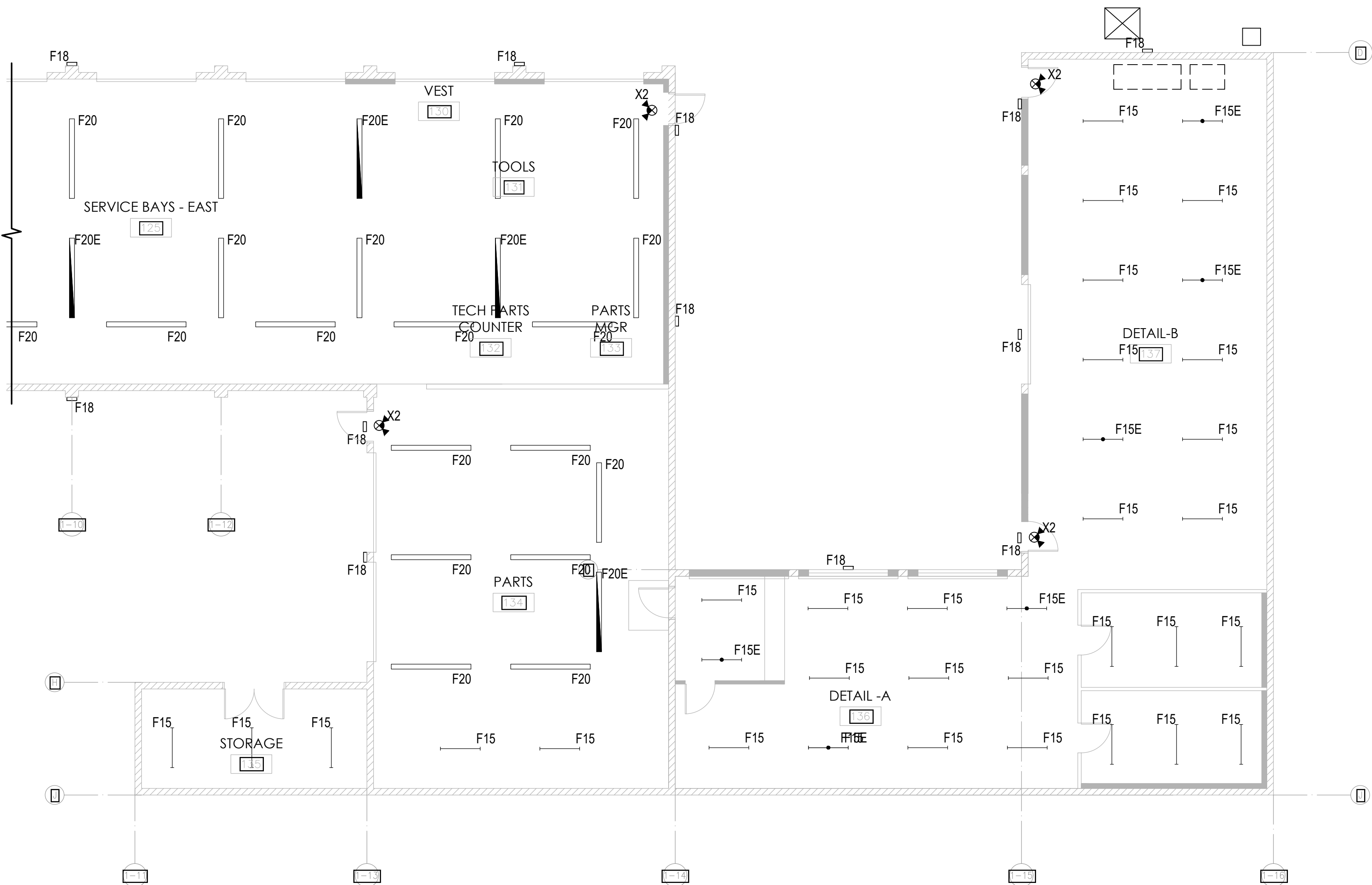
DATE:	JAN. 14, 2022
DRAWN BY:	KA
PROJECT NO.:	18525C
FILE NAME:	

LIGHTING PLAN SECTION 1

SHEET NO: E2.00

PRCA20220091

FIXTURE SCHEDULE							
TYPE	DESCRIPTION	VOLTS	WATTS PER FIXTURE	LAMPS		MOUNTING	
				LUM/W	CODE	TYPE	HEIGHT
F1	21' LED DIRECT/INDIRECT LINEAR	120V	305			LED SUPD.	TBD
F1E	SAME AS 'F1' EXCEPT W/INTEGRAL EMERGENCY BATTERY	120V	305			LED SUPD.	TBD
F2	RECESSED LED DOWNLIGHT	120V	36			LED REC.	CEILING
F2E	SAME AS 'F2' EXCEPT W/INTEGRAL EMERGENCY BATTERY	120V	36			LED REC.	CEILING
F3	LED MONOPOINT TRACK LIGHT	120V	14			LED SURF.	CEILING
F5	SUSPENDED 4' LED LINEAR	120V	58			LED SUPD.	TBD
F6	RECESSED LINEAR LED SLOT LIGHT	120V	101			LED REC.	CEILING
F7	RECESSED LED WALL WASHER	120V	36			LED REC.	CEILING
F8	RECESSED LED DOWNLIGHT	120V	12			LED REC.	CEILING
F8E	SAME AS 'F8 EXCEPT W/INTEGRAL EMERGENCY BATTERY	120V	12			LED REC.	CEILING
F9	RECESSED LED TROFFER	120V	29			LED REC.	CEILING
F12	LED MONOPOINT TRACK LIGHT	120V	14			LED SURF.	CEILING
F13	4' LED WRAP	120V	213			LED SURF.	CEILING
F15	LED SURFACE STRIP	120V	45			LED SURF.	CEILING
F15E	SAME AS 'F15' EXCEPT W/ INTEGRAL EMERGENCY BATTERY	120V	45			LED SURF.	CEILING
F18	LED WALL PACK	120V	32			LED WALL	9' AFF
F20	LED SUSPENDED 8' STRIP	120V	54			LED SUPD.	TBD
F20E	SAME AS 'F20' EXCEPT W/INTEGRAL EMERGENCY BATTERY	120V	54			LED SUPD.	TBD
F21	LED SUSPENDED 8' STRIP	120V	84			LED SUPD.	TBD
F21E	SAME AS 'F21' EXCEPT W/INTEGRAL EMERGENCY BATTERY	120V	84			LED SUPD.	TBD
PEN-1	LARGE LED PENDANT	120V	45			LED SUPD.	TBD
PEN-2	LED CYLINDER PENDANT	120V	17			LED SUPD.	TBD
X2	EXIT COMB WITH TWIN HEADS	120V	5			LED WALL	ABOVE DOOR



City of Puyallup  
Development & Permitting Services  
ISSUED PERMIT

Building

Planning

Engineering

Public Works

Fire

Traffic

DANARD  
ELECTRIC INC.

Quality Since 1947  
18819 38TH AVE. E.  
TACOMA, WA 98446  
PH: (253) 875-8650 FAX: (253) 875-8649  
COMMITTED TO BUILDING A BETTER WORLD

DATE: JAN. 14, 2022

DRAWN BY: KA

PROJECT NO.: 118525C

FILE NAME:

LIGHTING PLAN  
SECTION 2

SHEET NO:  
E2.10



PERMITTING

REVISIONS:

City of Puyallup  
Development & Permitting Services  
**ISSUED PERMIT**

Building	Planning
Engineering	Public Works
Fire	Traffic

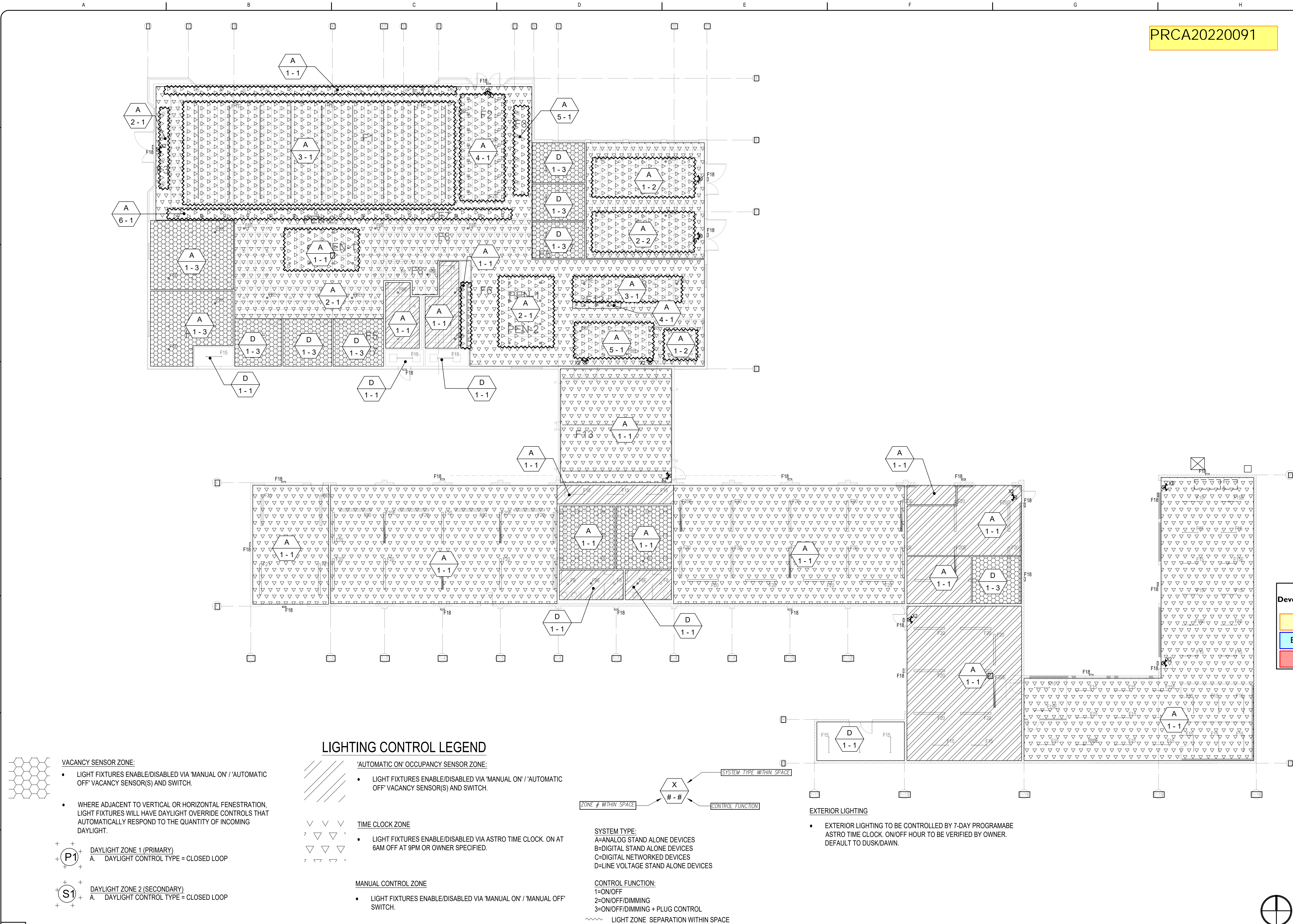
**DANARD**  
ELECTRIC INC.  
Quality Since 1947  
18819 38TH AVE. E.  
TACOMA, WA 98446  
PH: (253) 875-8650 FAX: (253) 875-8649  
COMMITTED TO BUILDING A BETTER WORLD

DATE: JAN. 14, 2022  
DRAWN BY: KA  
PROJECT NO.: 18525C  
FILE NAME:

LIGHTING PLAN  
ZONE CONTROL

SHEET NO:

E2.20





Project Title	Larson Jeep Building 300 - 2018 WSEC			Date	Jan 18, 2022
Lighting Power Calculation	NEW BUILDING - INTERIOR LIGHTING			Compliance Verification	COMPLIES
Compliance Method	Space by space	LPA Calculation Adjustment			LPA x 0.9

Proposed Lighting Power Density						
Fixture Type	Fixture ID	Quantity of Fixtures (FF)	Watts on Wattage Limit per Fixture (WpLF)	Total Linear Feet (LF)	Watts per Linear Foot (WpLF)	Total Watts Proposed (FF x WpLF or LF x WpLF)
<b>Individual Fixtures</b>						
	Decorative	PEN-1	2	45		90
	Decorative	PEN-2	17	17		272
	Direct / indirect pendant	F5	6	58		348
	Direct / indirect pendant	F1E	3	305		914
	Direct / indirect pendant	F1	6	305		1,827
	Horizontal surface-mount	E2P	3	32		96
	Horizontal surface-mount	F1SE	5	45		225
	Horizontal surface-mount	F1S	22	45		990
	Indirect pendant	F13	3	213		638
	Troffer	F9	14	29		406
	Recessed cove lighting	F6	1	101		101
	Recessed downlight	F8E	27	12		324
	Recessed downlight	F2	11	36		394
	Recessed downlight	F8	70	12		840
	Recessed downlight	F2E	3	36		107
	Suspended	F21	6	84		504
	Suspended	F21E	1	84		84
	Suspended	F20	38	54		2,056
	Suspended	F20E	10	54		541
<b>Proposed Total LPD</b>						<b>10756.7</b>

\_\_\_\_\_

Project Title	Larson Jeep Building 300 - 2018 WSEC	Date	Jan 06, 2022
Proposed Fixtures Details	NEW BUILDING - INTERIOR LIGHTING		

Project Title	Larson Jeep Building 300 - 2018 WSEC	Date	Jan 06, 2022
Lighting Power Calculation	NEW BUILDING - EXTERIOR LIGHTING	Compliance Verification	COMPLIES
Exterior Lighting Zone	ZONE 3	Base Site Allowance	500

Proposed Tradable Lighting Power Density							
Fixture Type	Fixture ID	Tradable Surface Type	Quantity of Fixtures (#F)	Watts or Wattage Limit per Fixture (WpF)	Total Linear Feet (LF)	Watts per Linear Foot (WpL.F)	Total Watts Proposed (#F x WpF) or (LF x WpL.F)
Individual Fixtures							
Wall-mounted	F18	Building entrances and exits - Pedestrian entrances & exits	8	32			256
Wall-mounted	F18	Uncovered parking areas and drives -	13	32			416
Tradable Proposed Total							672

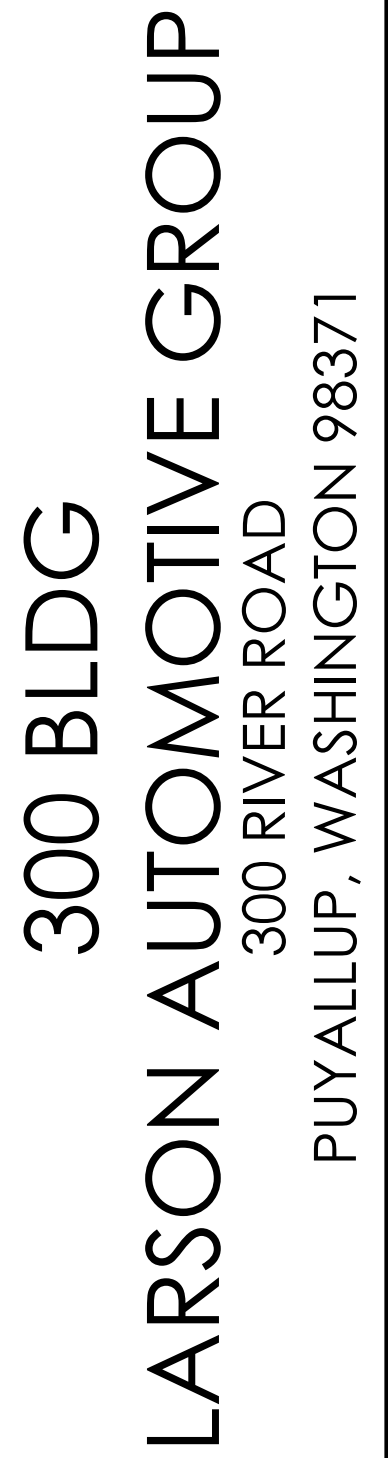
Total Proposed Watts Exceeding LPA	-488.7	
Remaining Base Site Allowance	11	COMPLIES

Project Title	Larson Jeep Building 300 - 2018 WSEC			Date	Jan 06, 2022
Proposed Fixtures Details		NEW BUILDING - EXTERIOR LIGHTING			
					Name

Fixture Type	Fixture ID	Location in Documents	Lamp Type	Non-Tradable Surface Type	New or Existing-to-Remain
<b>Individual Fixture</b>					
Wall-mounted	XX	E2.00	LED	Building façade -	New
Do these fixtures require specific exterior lighting controls? None required					

FULL SIZED LEDGIBLE COLOR PLANS ARE  
REQUIRED TO BE PROVIDED BY THE  
PERMITEE ON SITE FOR INSPECTION

PRCA20220091



**REVISIONS:**

---



---



---



---

