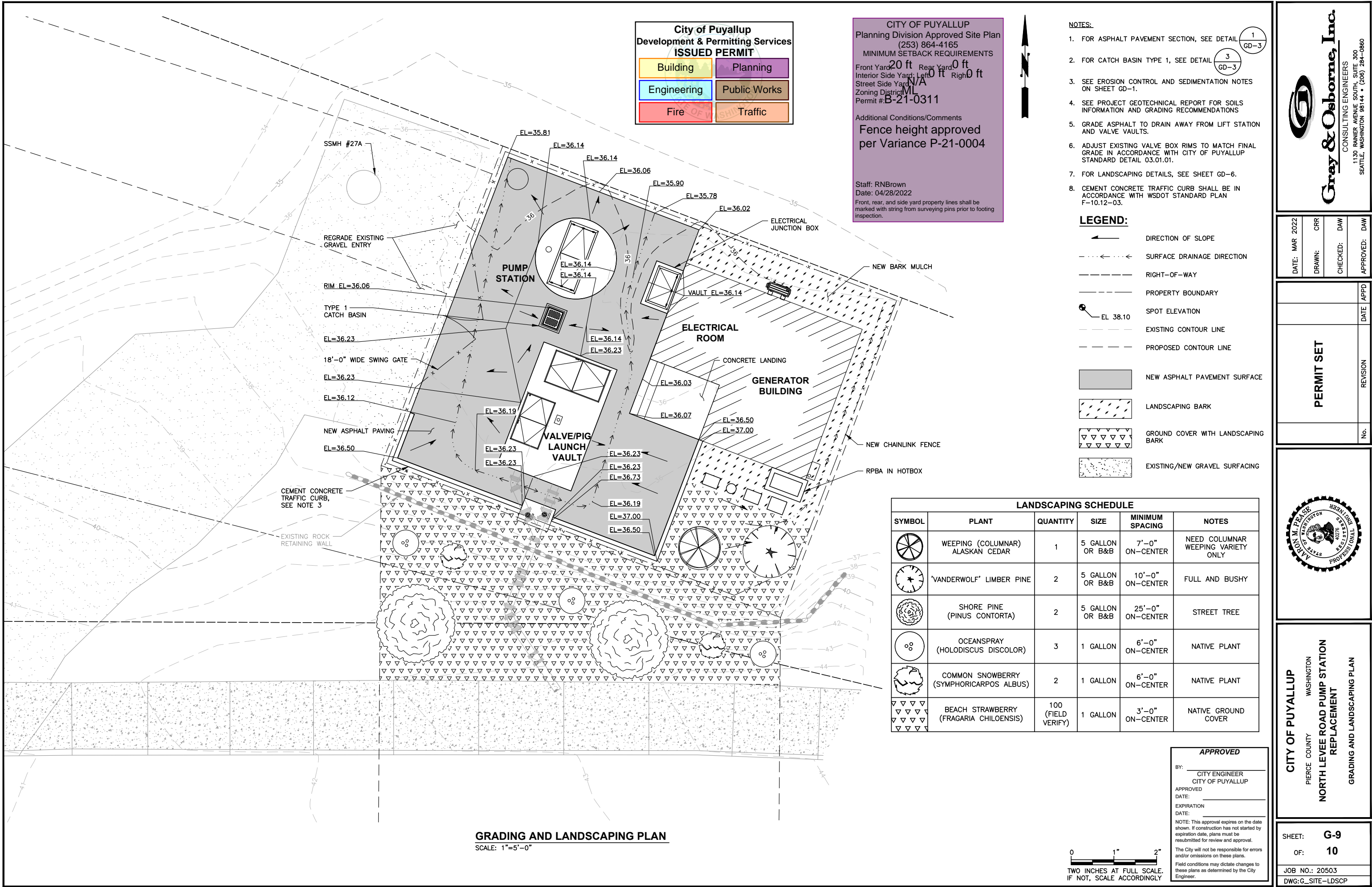
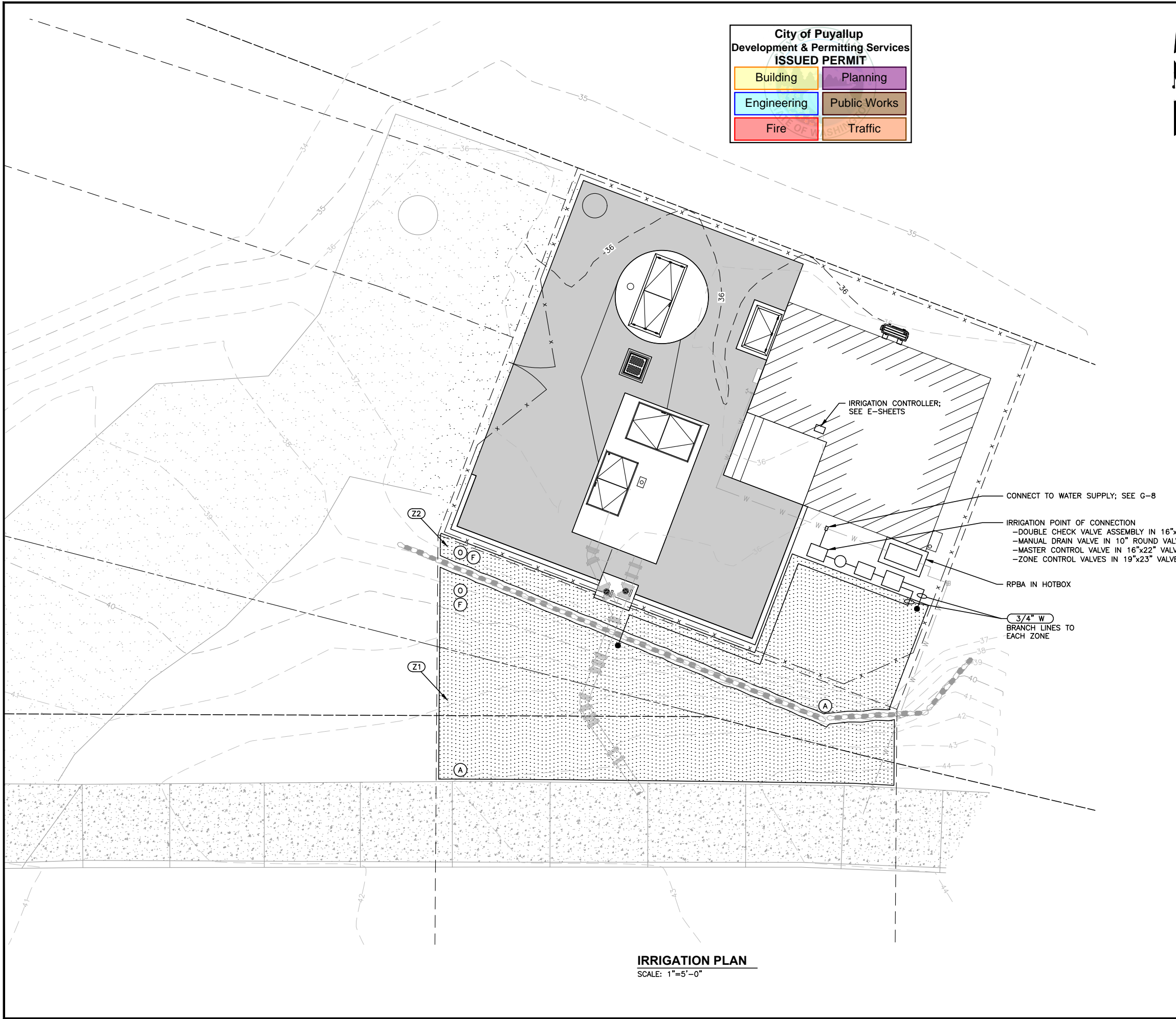


m:\PUYALLUP\20503 - north levee road pump station\02 planset\General\G_SITE-LDSCP.dwg, 3/16/2022 7:13 AM, PAYTON PARKER



m:\PUYALLUP\20503 - north levee road pump station\02 planset\General\G_SITE-LDSCP.dwg, 3/16/2022 7:13 AM, PAYTON PARKER



City of Puyallup
Development & Permitting Services
ISSUED PERMIT

Building	Planning
Engineering	Public Works
Fire	Traffic

NOTES:
1. FOR LANDSCAPING AND IRRIGATION DETAILS, SEE SHEET GD-6.

- LEGEND:**
- (F) DRIP ZONE OPERATION INDICATOR POP-UP
 - (O) MANUAL FLUSH VALVE IN 10" ROUND VALVE BOX
 - (A) AIR RELIEF VALVE IN 10" ROUND VALVE BOX

ZONE SUMMARY			
ZONE	AREA, FT²	EMITTER SPACING, IN.	LATTERAL SPACING, IN.
Z1	631	18	20
Z2	392	18	20

IRRIGATION PLAN
SCALE: 1"=5'-0"

0 1" 2"
TWO INCHES AT FULL SCALE.
IF NOT, SCALE ACCORDINGLY

APPROVED

BY: _____
CITY ENGINEER
CITY OF PUYALLUP

APPROVED
DATE: _____
EXPIRATION
DATE: _____

NOTE: This approval expires on the date shown. If construction has not started by expiration date, plans must be resubmitted for review and approval.

The City will not be responsible for errors and/or omissions on these plans.
Field conditions may dictate changes to these plans as determined by the City Engineer.

Gray & Osborne, Inc.
CONSULTING ENGINEERS
1130 RAINIER AVENUE SOUTH, SUITE 300
SEATTLE, WASHINGTON 98144 • (206) 284-0860

DATE: MAR 2022	DRAWN: CRR	CHECKED: DAW	APPROVED: DAW
----------------	------------	--------------	---------------

PERMIT SET

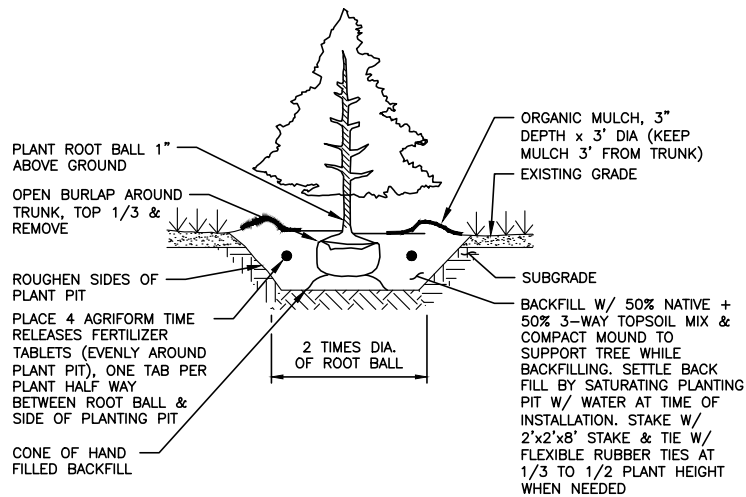
No.	REVISION	DATE	APPD
-----	----------	------	------

ARON M. PEASE
STATE OF WASHINGTON
LICENSED PROFESSIONAL ENGINEER
00276

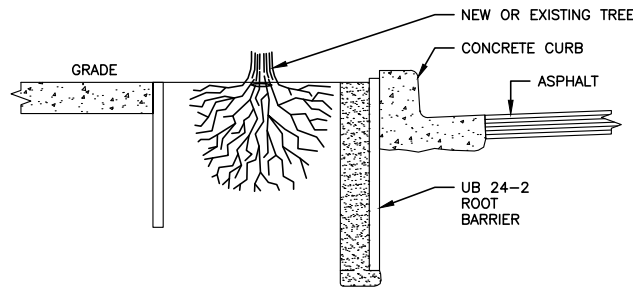
CITY OF PUYALLUP
PIERCE COUNTY WASHINGTON
**NORTH LEVEE ROAD PUMP STATION
REPLACEMENT**
IRRIGATION PLAN

SHEET: G-10
OF: 10
JOB NO.: 20503
DWG: G_SITE-LDSCP

m:\PUYALLUP\20503 - north levee road pump station\02 planset\General\GD_LNDSCAP.dwg, 3/14/2022 10:05 AM, PAYTON PARKER



1
TYP
BALL AND BURLAP DETAIL
NOT TO SCALE

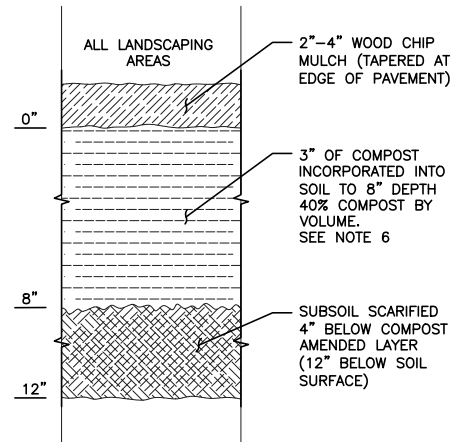


PRODUCT #	HEIGHT	LENGTH
UB 24-2	2'	M

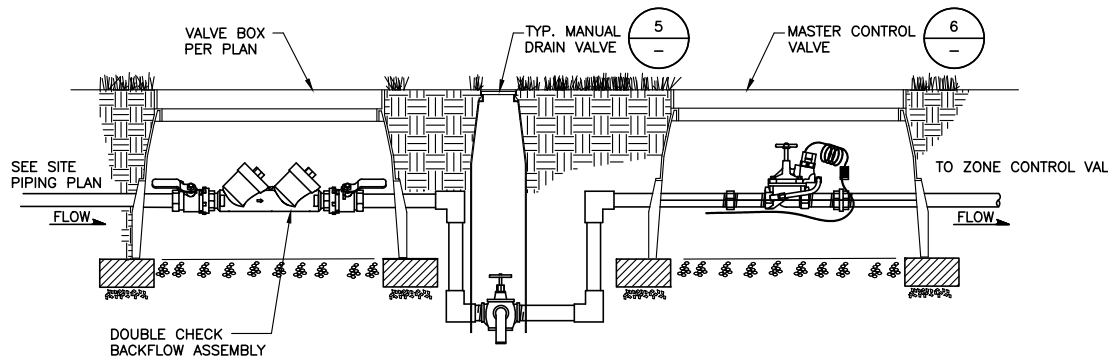
NOTES:

1. ROOT BARRIERS USED SHALL BE DeepRoot UB-24 ROOT BARRIERS OR EQUIVALENT.
2. INSTALLATION OF ROOT BARRIERS TO BE IN ACCORDANCE WITH THE MANUFACTURER'S SPECIFICATIONS.
3. THE PANEL SHALL BE INSTALLED SO THE VERTICAL RIBS FACE THE ROOTS OF THE TREE. A MINIMUM OF FOUR (4) PANELS SHALL BE INSTALLED ON EACH SIDE OF ROOT BALL FOR 8' OF PROTECTION.
4. FOR PRODUCT INFORMATION VISIT:
<http://www.deeproot.com>.

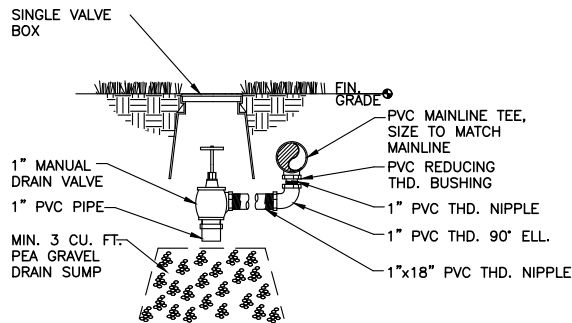
2
TYP
ROOT BARRIER DETAIL
NOT TO SCALE



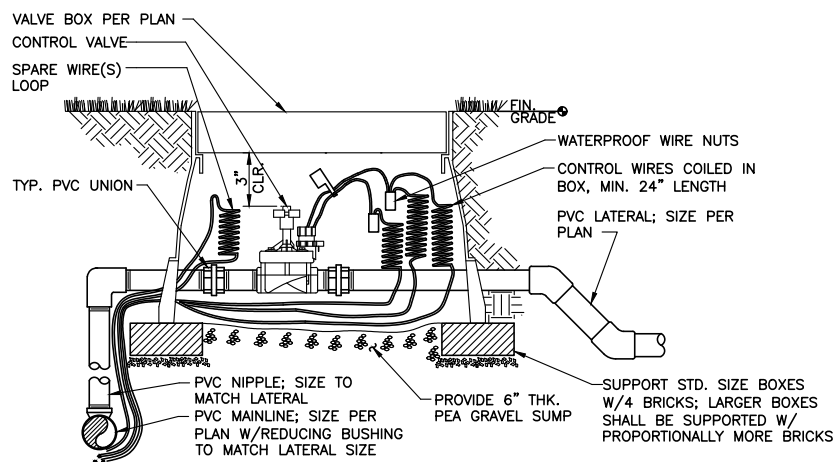
3
TYP
SOIL AMENDMENT DETAIL
NOT TO SCALE



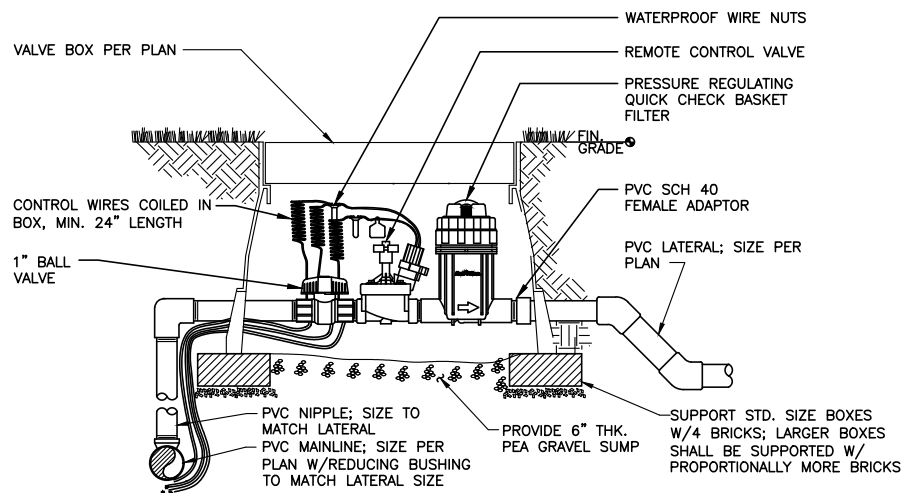
4
G-10
POINT OF CONNECTION
NOT TO SCALE



5
TYP
MANUAL DRAIN VALVE
NOT TO SCALE



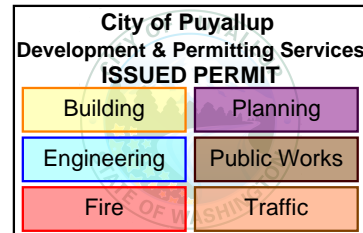
6
TYP
TYPICAL CONTROL VALVE
NOT TO SCALE



7
TYP
TYPICAL ZONE CONTROL VALVE
NOT TO SCALE

NOTES:

1. ALL SOIL AREAS DISTURBED OR COMPACTED DURING CONSTRUCTION, AND NOT COVERED BY BUILDINGS OR PAVEMENT, SHALL BE AMENDED WITH COMPOST AS DESCRIBED BELOW.
2. SUBSOIL SHOULD BE SCARIFIED (LOOSENEED) 4 INCHES BELOW AMENDED LAYER, TO PRODUCE 12-INCH DEPTH OF UN-COMPACTED SOIL, EXCEPT WHERE SCARIFICATION WOULD DAMAGE TREE ROOTS OR AS DETERMINED BY THE ENGINEER. SEE NOTE BELOW REGARDING PLANTING STEPS FOR STREET TREES.
3. COMPOST SHALL BE TILLED IN TO 8 INCH DEPTH INTO EXISTING SOIL, OR PLACE 8 INCHES OF COMPOST-AMENED SOIL, PER SOIL SPECIFICATION.
4. PLANTING BEDS SHALL RECEIVE 3 INCHES OF COMPOST TILLED IN TO 8-INCH DEPTH, OR MAY SUBSTITUTE 8' OF IMPORTED SOIL CONTAINING 35-40% COMPOST BY VOLUME. MULCH AFTER PLANTING, WITH 4 INCHES OF ARBORIST WOOD CHIP MULCH OR EQUAL (6" OF LOOSE WOOD CHIPS AT THE TIME OF PLANTING TO ALLOW SETTLING TO 4").
5. SETBACKS: TO PREVENT UNEVEN SETTLING, DO NOT COMPOST-AMEND SOILS WITHIN 3 FEET OF UTILITY INFRASTRUCTURES (POLES, VAULTS, METERS, ETC.). WITHIN ONE FOOT OF PAVEMENT EDGE, CURBS AND SIDEWALKS, SOIL SHOULD BE COMPACTED TO APPROXIMATELY 95% PROCTOR TO ENSURE A FIRM SURFACE.
6. SEE SECTION 8.2(B) OF THE VMS FOR SOIL AMENDMENT AND INSTRUCTION PROCEDURES FOR STREET TREE PLANTER STRIPS. ALL STREET TREE PLANTER STRIPS SHALL RECEIVE 40% COMPOST AMENDED SOIL TO THE FULL DEPTH OF THE STREET TREE ROOT BALL.



CITY OF PUYALLUP
PIERCE COUNTY WASHINGTON
NORTH LEVEE ROAD PUMP STATION
REPLACEMENT
LANDSCAPING AND SURFACE
RESTORATION DETAILS

APPROVED	
BY:	CITY ENGINEER CITY OF PUYALLUP
APPROVED	
DATE:	
EXPIRATION	
DATE:	
NOTE: This approval expires on the date shown. If construction has not started by expiration date, plans must be resubmitted for review and approval.	
The City will not be responsible for errors and/or omissions on these plans.	
Field conditions may dictate changes to these plans as determined by the City Engineer.	

0 1" 2"
TWO INCHES AT FULL SCALE.
IF NOT, SCALE ACCORDINGLY

SHEET: **GD-6**
OF: **6**
JOB NO.: 20503
DWG:GD_LNDSCAP