



SUBMITTAL SHEET

Pease & Sons Inc
8043. - FERRUCCI JR HIGH ADDITION & REMODEL

City of Puyallup Development & Permitting Services ISSUED PERMIT	
Building	Planning
Engineering	Public Works
Fire	Traffic

Project: 8043. -
FERRUCCI JR HIGH ADDITION & REMODEL

Spec Section Num: 100000
Submittal: See Package #
Revision: 0
Package: 095-100000
Date: 8/19/2021 UTC

Submittal Title: Stage Lift
Submittal Detail:
Response Due By: 9/2/2021 UTC

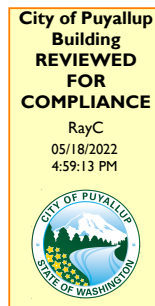
Contractor:
Brandon Haskins
Pease & Sons Inc

Puyallup Notes: B-20-0993

- 1) Subject to permit conditions, applicable code(s), and installation instructions.
- 2) Provide engineering for installations on other than slab on grade.
- 3) Lnl inspection approval is required.

Owner:
Larry Vandeberg
Puyallup School District

Architect:
Ben Hill
Arnulfo Ramirez
NAC



Contractor's Stamp

PEASE & SONS, INC.
PO BOX 44100
TACOMA, WA 98448-0100
253.531.7700

Pease & Sons, Inc. has reviewed this submittal with regard to conformance to the design concept as represented by the project plans & specifications. Review by the contractor or the engineer does not relieve the subcontractor/supplier from responsibility for the compliance with the contract requirements.
Submittal is:

☒ APPROVED
☐ APPROVED WITH DEVIATIONS NOTED
☐ SUBMITTAL AS SPECIFIED

REVIEWED BY: Brandon Haskins DATE: 8/19/21

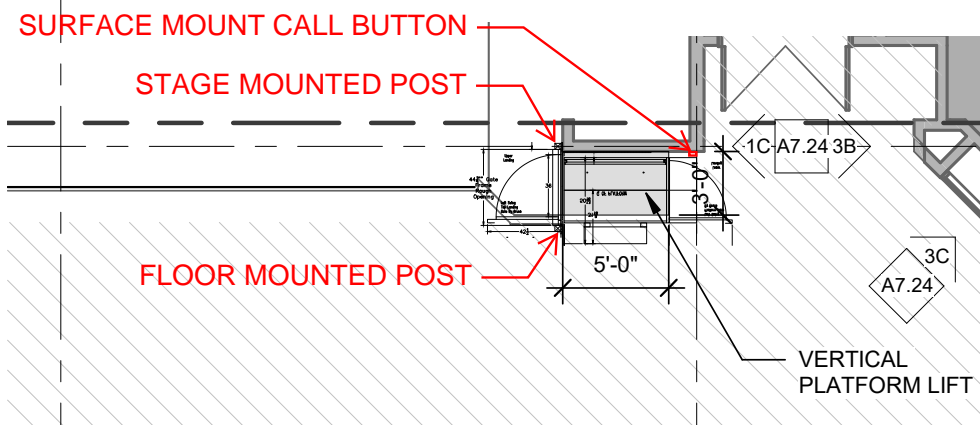
☐ NO EXCEPTION TAKEN
☒ NOTE MARKINGS

☐ REJECTED
☐ REVISE AND RESUBMIT

Review is for general conformance with the design concept and Contract Documents. If any deviations from the Contract Documents are included herein, such deviations shall be presumed by the Contractor as not having been reviewed, except where specific attention is called to the change as a deviation. Markings or comments shall not be construed as relieving the Contractor from compliance with the project plans and specifications. The Contractor is responsible for details and accuracy; confirming and correlating all quantities and dimensions; fabrication processes and techniques of construction; coordination of this work with that of all other trades and the satisfactory performance of this work

R
C

NAC By bhll
2:29 pm, Sep 07, 2021



City of Puyallup

Development & Permitting Services

ISSUED PERMIT

Building

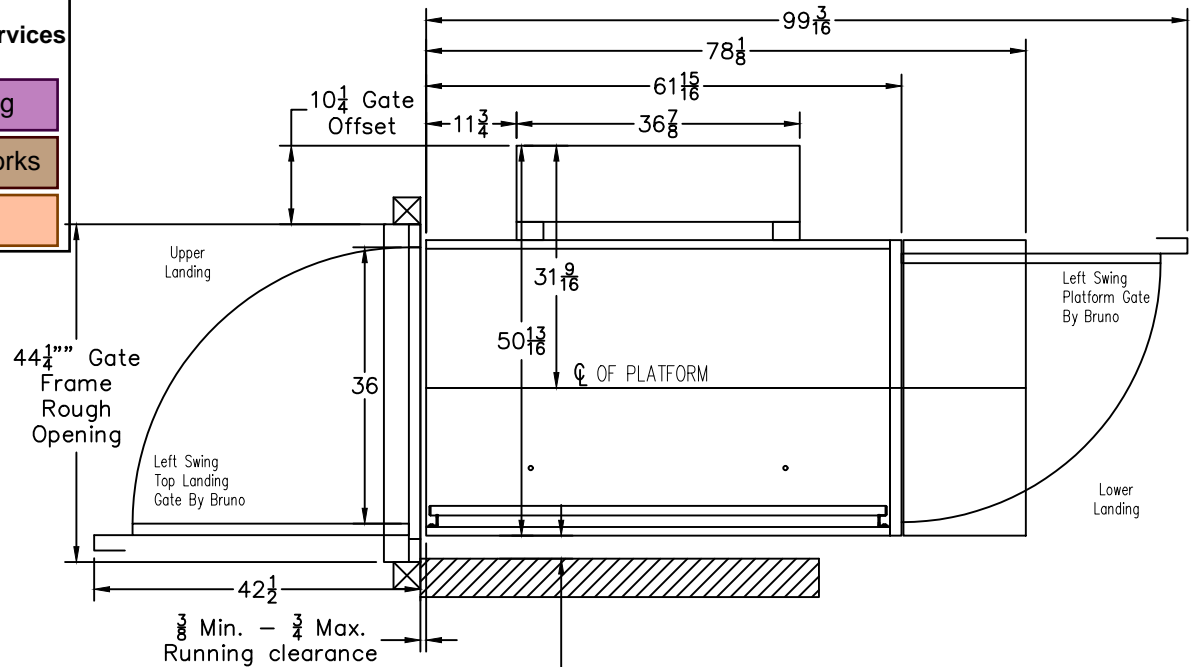
Planning

Engineering

Public Works

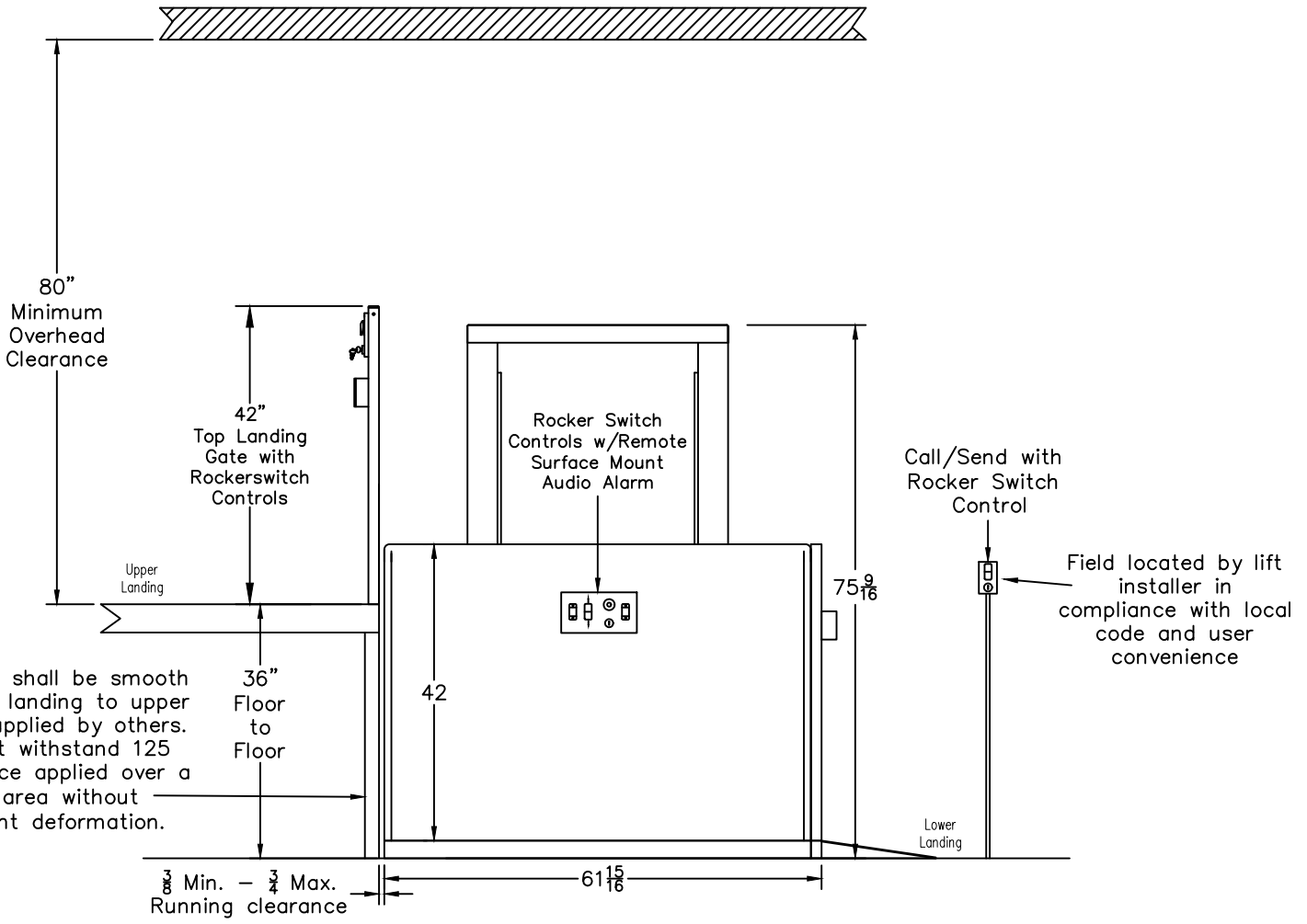
Fire

Traffic



NOTE:
Running clearance
must be between 2"- 3",
or greater than 12".
(ASME A18.1-2005 and older)
or
No Less than 2"
(ASME A18.1-2008 and newer)

PLAN VIEW
RIGHT HAND UNIT



ELEVATION VIEW
RIGHT HAND

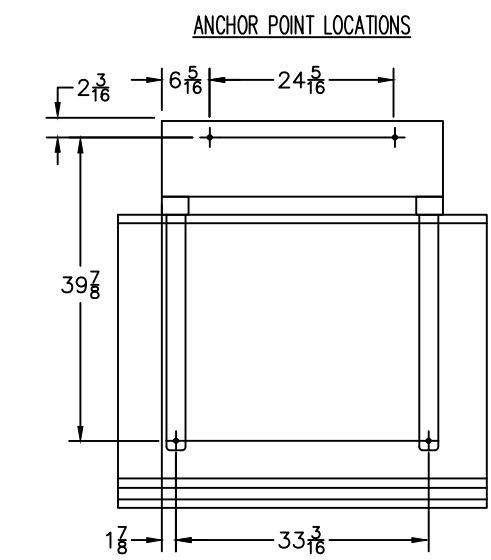
TECHNICAL DATA/SPECIFICATIONS

RATED LOAD: 750 lb (340 kg) maximum.
POWER SOURCE: Check applicable local codes for all electrical and wiring requirements. If it is determined that a GFI (Ground Fault Interrupter) outlet is required; use a GFI 120V, 15A, 60 Hz single phase circuit to operate the internal battery charger (charger draws 3A max.). National Electrical Code requires a GFI is used in all outdoor or wet environment applications.
DRIVE: 1/2 hp motor, 1750 rpm, 24 VDC permanent magnet, 20 full load amps, continuous duty.
INTERMEDIATE REDUCTION: Dual 4L style Poly-V belts and pulleys, 3.94:1 pulley reduction.
FINAL DRIVE: 1" (24.5 mm) diameter ACME screw with bronze nut and bronze safety back up nut.
MOTOR CONTROLLER: 24 VDC Relay control with 35A circuit breaker.
BRAKING: Precision landing control.
STANDARD CONTROL: Up and down rocker switch, continuous pressure, key switch control, lighted controls.
EMERGENCY STOP SWITCH: Red, sealed, 1.55" (39 mm) diameter mushroom head, illuminated with audio alarm, push to stop, pull to reset.
SPEED: 10 ft/min (0.05 m/s) maximum.
UNDER CARRIAGE SAFETY: Totally enclosed bottom formed steel safety pan for unenclosed applications only.
LIMIT SWITCHES: Adjustable upper and lower limit switches; upper and lower final limit switches.
For complete technical specifications please see ILS-01100 "VPL-3300B Unenclosed Commercial Vertical Platform Lift Technical Specifications"

U.S. F.D.A. CLASSIFICATION: Class II, 510(K) exempt, CLASSIFICATION NUMBER: 890.3930, PRODUCT CODE: PCE
ETL-Intertek C-US Listed: Control Number:4004689

PERFORMANCE STANDARDS

- ASME A18.1-2017 (Sec. 2) Safety Standards for Platform Lifts and Stairway Chairlifts
- CSA B355-19 Lifts for Persons with Physical Disabilities
- CSA B44.1-19/ASME A17.5-2019 Elevator and Escalator Electrical Equipment
- NFPA 70-2017 National Electrical Code



TECHNICAL SPECIFICATIONS

FLOOR RECOMMENDATIONS: 4" (102mm) thick, 3500 PSI minimum compressive strength, reinforced concrete slab. Refer to technical drawings for minimum slab dimensions. If the temperature can fall below freezing, it is recommended that you insert an insulation sheet between the concrete slab and the compacted rock.

FLOOR ATTACHMENT: The VPL must be fastened to the concrete slab using four 1/2" (3/8"bolt) X minimum 2-1/2" long concrete anchors suitable for the environment. Follow the selected concrete anchor manufacturer's guidelines, and all applicable codes.

HOUSING ATTACHMENT: None required. You can use the 5/16-18 tapped holes on the tower frame work to fasten the tower housing to a vertical wall for additional stability. Note: The housing must remain intact.

OPTIONS INCLUDED

- Model Number: VPL-3353B (53 in max height-battery powered)
- Platform Size: 36 x 60
- Platform Controls: Rocker w/Remote Surface Mount Audio Alarm
- Platform Gate/Ramp: LH platform gate with ramp
- Lower Landing Controls: Rocker Switch (LC)
- Upper Landing Entrance/Exit: LH 36 in EMI Top Gate
- Pit Switch: VPL-K-3308
- Manual Lowering Device: VPL-31119
- Application: Unenclosed (No Hoistway)
- Number of Landings: 2-Stop
- Hand of Unit: Right Hand
- Platform Configuration: Straight-thru
- Lower Landing Timer: Included on PCB
- Door/Gate Panel: Metal (std.)
- Upper Landing Controls: Rocker Switch
- Upper Landing Timer: Included on PCB
- Battery Package: 17AH package (std)

WA-0278 MOBILITY CONCEPTS INC	Quote# 426617
----------------------------------	---------------

Customer: FERRUCCI JUNIOR HIGH

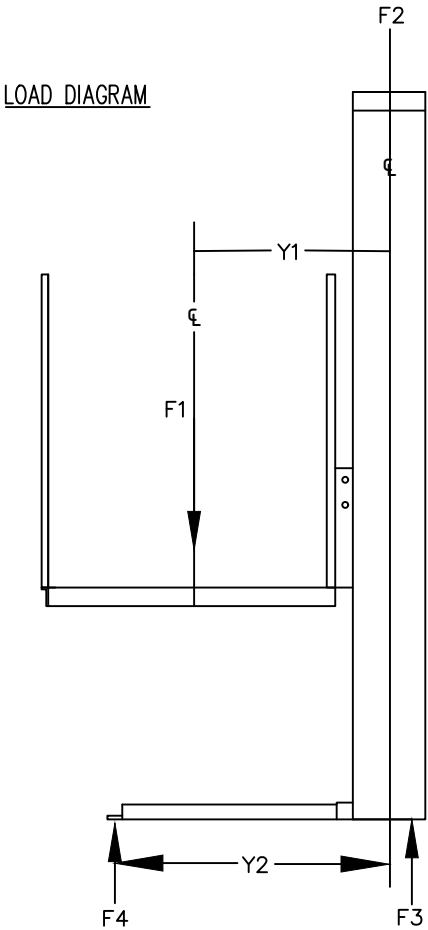
DAG 08/12/2021

Bruno Independent Living Aids, Inc., 1780 Executive Drive, Oconomowoc, WI 53066
Email: vpl.support@bruno.com

Any reproduction or other use of these materials without written permission of Bruno Independent Living Aids, Inc. is expressly prohibited. Bruno Independent Living Aids, Inc. reserves the right to modify or make changes to these specifications at any time with out notice.



FORCE	DESCRIPTION	VALUE (MAX)
F1	Rated Load + Platform Weight	1210 lbs.
F2	Tower Weight	600 lbs.
F3	Floor Reaction	879 lbs.
F4	Floor Reaction	931 lbs.



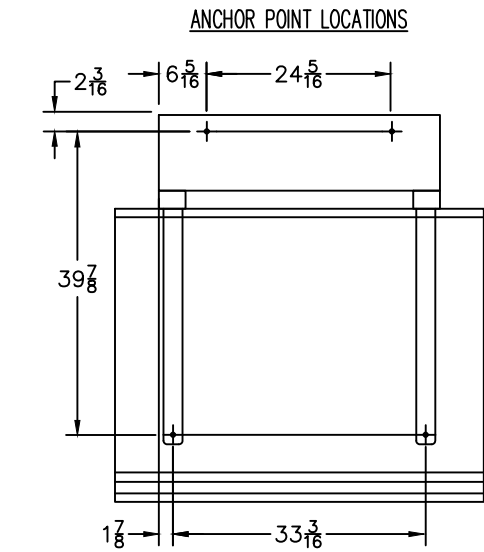
PLATFORM SIZE	Y1	Y2
36" WIDE	26 $\frac{1}{4}$ "	36 $\frac{15}{16}$ "
42" WIDE	29 $\frac{1}{4}$ "	36 $\frac{15}{16}$ "

NOTE: These are reaction forces generated by the lift. Adhere to local building codes, regulations, and safety factors for supporting structures. Consult a structural engineer or architect in your jurisdiction.

TECHNICAL DATA/SPECIFICATIONS

RATED LOAD: 750 lb (340 kg) maximum.
POWER SOURCE: Check applicable local codes for all electrical and wiring requirements. If it is determined that a GFI (Ground Fault Interrupter) outlet is required; use a GFI 120V, 15A, 60 Hz single phase circuit to operate the internal battery charger (charger draws 3A max.). National Electrical Code requires a GFI is used in all outdoor or wet environment applications.
DRIVE: 1/2 hp motor, 1750 rpm, 24 VDC permanent magnet, 20 full load amps, continuous duty.
INTERMEDIATE REDUCTION: Dual 4L style Poly-V belts and pulleys, 3.94:1 pulley reduction.
FINAL DRIVE: 1" (24.5 mm) diameter ACME screw with bronze nut and bronze safety back up nut.
MOTOR CONTROLLER: 24 VDC Relay control with 35A circuit breaker.
BRAKING: Precision landing control.
STANDARD CONTROL: Up and down rocker switch, continuous pressure, key switch control, lighted controls.
EMERGENCY STOP SWITCH: Red, sealed, 1.55" (39 mm) diameter mushroom head, illuminated with audio alarm, push to stop, pull to reset.
SPEED: 10 ft/min (0.05 m/s) maximum.
UNDER CARRIAGE SAFETY: Totally enclosed bottom formed steel safety pan for unenclosed applications only.
LIMIT SWITCHES: Adjustable upper and lower limit switches; upper and lower final limit switches.
For complete technical specifications please see ILS-01100 "VPL-3300B Unenclosed Commercial Vertical Platform Lift Technical Specifications"

U.S. F.D.A. CLASSIFICATION: Class II, 510(K) exempt, CLASSIFICATION NUMBER: 890.3930, PRODUCT CODE: PCE
ETL-Intertek C-US Listed: Control Number:4004689
PERFORMANCE STANDARDS
ASME A18.1-2017 (Sec. 2) Safety Standards for Platform Lifts and Stairway Chairlifts
CSA B355-19 Lifts for Persons with Physical Disabilities
CSA B44.1-19/ASME A17.5-2019 Elevator and Escalator Electrical Equipment
NFPA 70-2017 National Electrical Code



OPTIONS INCLUDED
Model Number: VPL-3353B (53 in max height-battery powered)
Platform Size: 36 x 60
Platform Controls: Rocker w/Remote Surface Mount Audio Alarm
Platform Gate/Ramp: LH platform gate with ramp
Lower Landing Controls: Rocker Switch (LC)
Upper Landing Entrance/Exit: LH 36 in EMI Top Gate
Pit Switch: VPL-K-3308
Manual Lowering Device: VPL-31119

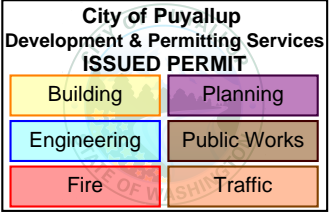
Application: Unenclosed (No Hoistway)
Number of Landings: 2-Stop
Hand of Unit: Right Hand
Platform Configuration: Straight-thru
Lower Landing Timer: Included on PCB
Door/Gate Panel: Metal (std.)
Upper Landing Controls: Rocker Switch
Upper Landing Timer: Included on PCB
Battery Package: 17AH package (std.)

TECHNICAL SPECIFICATIONS

FLOOR RECOMMENDATIONS: 4" (102mm) thick, 3500 PSI minimum compressive strength, reinforced concrete slab. Refer to technical drawings for minimum slab dimensions. If the temperature can fall below freezing, it is recommended that you insert an insulation sheet between the concrete slab and the compacted rock.

FLOOR ATTACHMENT: The VPL must be fastened to the concrete slab using four 1/2" (3/8"bolt) X minimum 2-1/2" long concrete anchors suitable for the environment. Follow the selected concrete anchor manufacturer's guidelines, and all applicable codes.

HOUSING ATTACHMENT: None required. You can use the 5/16-18 tapped holes on the tower frame work to fasten the tower housing to a vertical wall for additional stability.



WA-0278
MOBILITY CONCEPTS INC

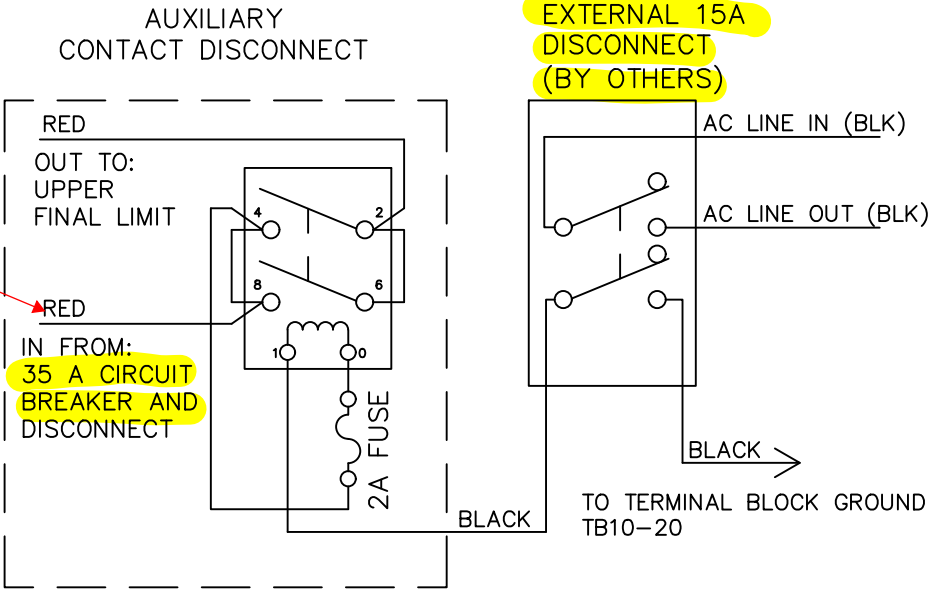
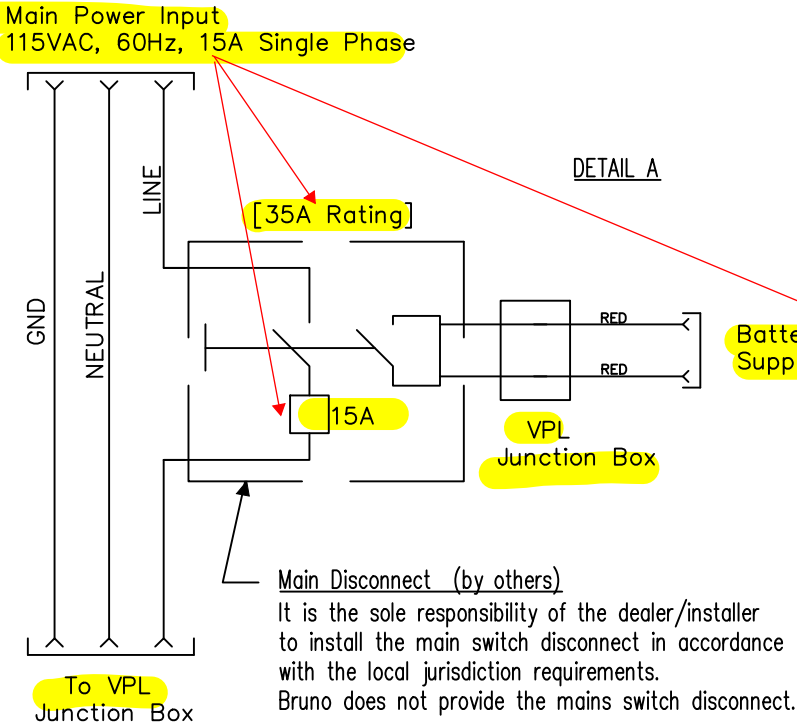
Quote# 426617

Customer: FERRUCCI JUNIOR HIGH

DAG 08/12/2021

Standard VPL Wiring

VPL-K-3368 Auxiliary Contact Disconnect Kit
(This is an optional kit when ordered.)
Field installed inside the VPL by the dealer)
Available for commercial units only



Bruno Independent Living Aids, Inc., 1780 Executive Drive, Oconomowoc, WI 53066
Email: vpl.support@bruno.com

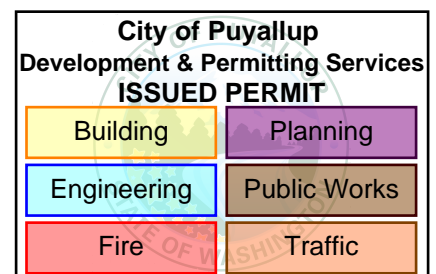
Any reproduction or other use of these materials without written permission of Bruno Independent Living Aids, Inc. is expressly prohibited. Bruno Independent Living Aids, Inc. reserves the right to modify or make changes to these specifications at any time with out notice.



Safe and Reliable **Public Access**



Commercial **Vertical Platform Lifts**



VPL-3300B Series



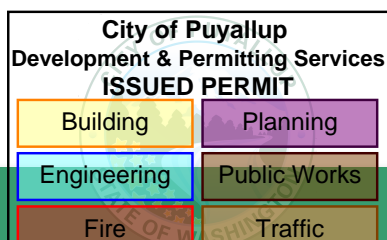
Commercial Vertical Platform Lifts

VPL-3300B Series

For 30 years, Bruno has provided accessibility solutions for people challenged by limited mobility. Safety and dependability are hallmarks of the Bruno name, and all Bruno vertical platform lifts (VPLs) are made in the USA and suitable for indoors or outdoors. Bruno's VPL-3300B series wheelchair lift includes four effective solutions for Americans with Disabilities Act (ADA) compliance in churches, schools or businesses:

- Enclosed
- 3-Gate (Toe guard)
- Unenclosed
- Shaftway/Hoistway

All Bruno VPLs are designed in accordance with ASME A18.1, section 2 and can be used in most applications to meet ANSI A117.1 National Accessibility Guidelines.



ENCLOSED *(pictured right)*

Bruno's enclosed vertical platform lift is self-contained, lightweight and easy to install – no hoistway/shaftway construction needed. Aesthetically-pleasing with full size Plexiglass door and panel inserts, Bruno's enclosed vertical platform wheelchair lift combines an attractive design, dependable performance and ADA compliance. Access up to 14 ft.

3-GATE (TOE GUARD)

(pictured top of previous page)

The 3-gate (toe guard) lower enclosure system provides a full barrier at the lower landing with no access under the lift for maximum safety. Like all Bruno VPLs, the 3-gate is driven by a reliable, quiet ACME screw-driven DC motor with full-time battery operation for access even during power outages. Access up to 53 in.

UNENCLOSED *(pictured bottom of previous page)*

The unenclosed vertical platform lift is an affordable, space saving solution for ADA compliance that is often used for providing access to stages, porches or short distances. Check to ensure a standard unenclosed platform lift is allowable under local code. Access up to 60 in.

SHAFTWAY/HOISTWAY *(not pictured)*

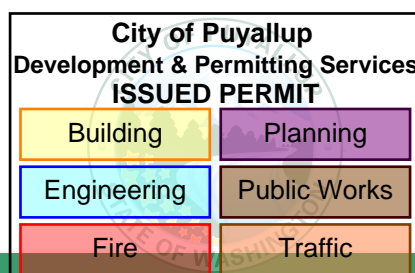
Bruno's shaftway VPL is placed inside a shaftway (also known as a hoistway) built by others. The shaftway VPL includes a drive mast, passenger platform, doors and gates. Access up to 14 ft.

ASME A18.1 requires any VPL over 60 in to be enclosed.



“It's a great alternative to an elevator. It's less obtrusive and more affordable than a traditional elevator, so we can put the savings toward other areas of need. We also like that it's totally open so you can see the kids and make sure they are ok.”

-Tara Villaobos
Distric Administrator



Learn more at www.bruno.com

Features and Options

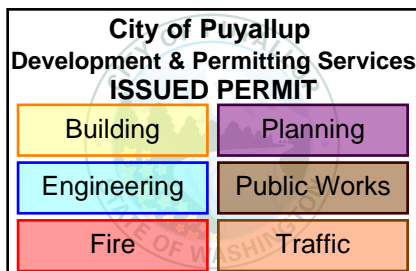


Standard features

- Access up to 14 ft
- Keyed, constant pressure rocker switch control on platform
- Emergency stop switch and audio/visual alarm
- Top and bottom limit switches
- Bottom platform safety panel (Unenclosed Application)
- 42 in (1067 mm) high, solid, side platform walls
- 36 in x 54 in (914 mm x 1372 mm) non-skid platform
- Automatic folding ramp (unenclosed unit only)
- Fixed ramp (enclosed and 3-gate — no pit)
- 750 lb (340 kg) lifting capacity
- Reliable, quiet ACME screw-driven DC motor with full-time battery operation offers access even in a power outage — Models VPL-3353B & VPL-3375B 1/2 hp DC motor (includes 17AH batteries); models VPL-3310B, VPL-3312B, and VPL-3314B 1hp DC motor (includes 34 AH batteries)
- Gold Warranty: Two years on major components; one year on parts

Options

- Top landing gate includes call/send controls with key and mechanical or electrical interlock
- Cold Weather Package, tested to improve performance. (recommended if operating temperature is below 20°F/-7°C)
- Several platform sizes and configurations
- Rocker switch or paddle controls on the platform
- Rocker switch or paddle landing controls
- Flush mount doors with interlock
- Power assisted door/gate operator
- ADA compliant telephone kit
- Platform gate (unenclosed application)
- Plexiglass panels: clear or bronze
- Secondary grab rail
- Remote audio alarm
- Flood zone tower
- Flood zone sensor kit
- Braille plate kit
- Pit switch
- Brush kit



Bruno Independent Living Aids, Inc.
1780 Executive Drive, Oconomowoc, WI 53066
www.bruno.com

© Bruno Independent Living Aids, Inc. 2019
2019-03-27 Commercial-VPL.indd • MKT-CVPL-TT



CONSUMER AFFAIRS