

### SCOPE OF WORK

INSTALL NEW POTTER AFC-1000 ADDRESSABLE FIRE ALARM PANEL IN GROUP B OCCUPANCY IN REMODELLED BUILDING AND IN EXISTING MAINTAINANCE BAY BLDG. INSTALL INITIATION AND NOTIFICATION TO PUYALLUP AND STATE FIRE CODE REQUIREMENTS. PROVIDE FIRE ALARM VISUAL AND AUDIBLE NOTIFICATION ON EXTERIOR OF BUILDING AND THROUGHOUT BUILDING SPACE WITHIN SCOPE. PROVIDE SMOKE DETECTION AND PULL STATIONS THROUGHOUT. BUILDING IS SPRINKLED. PROVIDE FIRE ALARM CENTRAL STATION MONITORING VIA TELCO LINES.

DESIGNED IN ACCORDANCE WITH:  
NFPA 72 2019  
NEC 2020  
IBC 2018

### INSTALLATION NOTES:

- PRIOR TO CALLING FOR INSPECTION, THE INSTALLER SHALL PROVIDE DOCUMENTATION TO THE LOCAL AHJ STATING THAT THE SYSTEM HAS BEEN INSTALLED, TESTED, EVALUATED AND CONFIRMED TO BE IN ACCORDANCE WITH ALL GOVERNING CODES AND THE APPROVED PLANS. THE FIRE ALARM INSTALLER SYSTEM INSTALLER SHALL COMPLETE AN NFPA 72 RECORD OF COMPLETION (NFPA 72 10.18.2.1). THE RECORD OF COMPLETION SHALL BE PROVIDED TO THE AHJ INSPECTOR AT THE TIME OF THE INSPECTION (NFPA 72 10.18.2.1.2.4).
- INSTRUCTIONS FOR OPERATING, TESTING, AND MAINTENANCE OF THE SYSTEM ALONG WITH RECORD DRAWINGS OTHERWISE REFERRED TO "AS-BUILTS" AND EQUIPMENT SPECIFICATIONS SHALL BE PROVIDED AT AN APPROVED LOCATION.
- ALL SYSTEMS AND DEVICES SHALL BE INSTALLED AND TESTED PER THE MANUFACTURE'S LISTING AND THE AUTHORITY HAVE JURISDICTION (NFPA 72 10.14.2.1). LABEL ALL DEVICE LOCATIONS.
- FACP AND ALL REMOTE POWER SUPPLIES REQUIRE A DEDICATED 120VAV - 20AMP CIRCUIT. A NOTICE PLACED IN THE FACP SHALL DIRECT PERSONNEL TO THE LOCATION OF THE ELECTRICAL PANEL THAT IS SUPPLYING DEDICATED POWER TO THE SYSTEM (NFPA 72 10.5.5.1). THE DEDICATED CIRCUIT BREAKER THAT SERVES THE FIRE ALARM SYSTEM SHALL BE LABELED AND SECURED AGAINST TAMPERING WITH A RED BREAKER LOCKOUT.
- WALL MOUNTED STROBES SHALL BE PLACED 80" MINIMUM TO 96" MAXIMUM ABOVE FLOOR LEVEL (NFPA 72 18.5.4.1 & 2). WALL MOUNTED STROBES SHALL BE SIZED IN ACCORDANCE WITH (NFPA 72 TABLE 18.5.4.3.1(A). CEILING MOUNTED STROBES SHALL BE PLACED AND SIZED IN ACCORDANCE WITH (NFPA 72 TABLE 18.5.4.3.1(B)).
- WHEN MORE THAN TWO NOTIFICATION APPLIANCES ARE VISIBLE AT THE SAME TIME IN THE SAME ROOM OR ADJACENT SPACE OR THE FIELD OF VIEW THE FLASH OF THE STROBES SHALL BE SYNCHRONIZED (NFPA 72 18.5.4.3. (3) AND (4)).
- PULL STATIONS SHALL BE PLACED BETWEEN 42 AND 48 INCHES ABOVE FLOOR LEVEL. DEVICES SHALL BE RED IN COLOR (ICC A117.1 309 AND NFPA 72 17.14.5).
- CENTER SMOKE DETECTORS IN CORRIDORS WITH CEILING LIGHTING AND THE FA STROBES. SMOKE DETECTORS IN CORRIDORS ARE TO BE SPACED PER NFPA 72 17.6.3.1 (H) AND 17.7.3.2.4.2 (4).
- SMOKE DETECTORS USED FOR ELEVATOR RECALL SHALL BE INSTALLED WITHIN 21' OF THE ELEVATOR DOOR CENTERLINE (NFPA 72 21.3.5).
- SMOKE DETECTORS USED FOR DOOR RELEASE SHALL BE INSTALLED WITHIN 5' OF THE DOOR ON THE CENTERLINE OF THE DOORWAY (NFPA 72 17.7.5.6.6.1).
- AUDIBILITY REQUIREMENTS: A SOUND LEVEL OF 75dbA or 15dbA OVER AMBIENT SHALL BE REACHED IN ALL AREAS PROVIDED WITH FIRE ALARM DEVICES PER SPECIFICATION AND NFPA-72.
- SET STROBE CANDELA OUTPUT AS SHOWN ON PLANS. SET HORN TO MED SETTING.
- OUTDOOR STROBES REQUIRED FOR APPROACHING EMERGENCY VEHICLES TO BE LOCATED ON THE BUILDING AT A SERVICEABLE HEIGHT, AND TO BE CLEARLY VISIBLE FROM THE EMERGENCY VEHICLE APPROACH PATH.
- FIRE ALARM CIRCUITS TO BE INSTALLED, SECURED, AND TERMINATED IN ACCORDANCE WITH NEC, NFPA 72, AND LOCAL AHJ REQUIREMENTS AND STANDARDS.
- NOTIFY E-SQUARED SYSTEMS OF ANY DESIGN QUESTIONS OR CHANGES PRIOR TO INSTALLATION OR FABRICATION. COMPARE DRAWINGS WITH CURRENT CONTRACT DRAWINGS PRIOR TO INSTALLATION.
- ANY ALTERATIONS OR VARIATIONS FROM THE DRAWINGS SHOULD BE APPROVED PRIOR TO PROCEEDING AND DOCUMENTED ON THE AS-BUILT DRAWINGS. VERIFY DEVICE LOCATIONS PRIOR TO INSTALLATION.
- REFERENCE FACTORY INSTRUCTION MANUALS CURING INSTALLATION OF FIRE CONTROL EQUIPMENT.
- DETECTORS SHALL NOT BE MOUNTED IN A DIRECT AIR STREAM. DO NOT INSTALL DETECTORS WITH IN 3'-0" OF AIR DIFFUSERS.
- US ONLY U.L. LISTED DEVICES.
- DO NOT INSTALL DETECTOR HEADS UNTIL FINAL CLEANING HAS BEEN PERFORMED.
- FIELD DETERMINE INTERFACE REQUIREMENTS AND LOCATIONS OF EQUIPMENT SUPPLIED BY OTHER TRADES. (I.E. SPRINKLER DEVICES, HVAC UNITS, FIRE DAMPERS, ELEVATOR CONTROLS, & FAN CONTROLS.)
- NOTIFY E-SQUARED A MIN. OF 1 WEEK PRIOR TO THE INSTALLATION OF ALL WIRING, DEVICES, AND POWER, FOR SCHEDULING OF SYSTEM CHECK OUT AND PROGRAMMING. E-SQUARED REQUIRES A MIN. OF 2 DAYS ON SITE FOR CHECKS PRIOR TO SCHEDULING A FIRE ALARM FINAL. LARGER SYSTEMS WILL REQUIRE MORE TIME. FAILURE TO HAVE WORK COMPLETED WILL REQUIRE RESCHEDULING AND ADDITIONAL COSTS.

### ELECTRICAL NOTES:

- INSTALLATION SHALL COMPLY WITH NFPA 70, PARTICULARLY ARTICLE 760, AND SHALL ALSO COMPLY WITH NFPA 72, AND ALL LOCAL ELECTRICAL CODES AND LOCAL JURISDICTION REQUIREMENTS.
- CONDUIT INDICATED ON PRINTS IS DIAGRAMMATIC AND MAY BE REROUTED PER FIELD REQUIREMENTS.
- AC POWER SHALL NOT OCCUPY THE SAME CONDUIT AS FIRE PROTECTION CIRCUITS (MOST FIRE DETECTION CKT'S ARE NEC CLASS 3)
- ALL SLC LOOP WIRING SHALL BE MINIMUM 2 CONDUCTOR #16, UNSHELD, LOW/MID CAPACITANCE FIRE ALARM CABLE OF THE PROPER RISER AND/OR PLENUM TYPE. SEE WIRE LEGEND FOR PROJECT SPECIFIC TYPE/GAUGE.
- CONVENTIONAL FIRE DETECTION INITIATING DEVICE CIRCUITS OR NOTIFICATION APPLIANCE CIRCUITS SHALL NOT BE PARALLEL BRANCHED (TEE TAPPED) TO ENSURE SUPERVISION OF WIRING. ADDRESSABLE CLASS "A" FIRE DETECTION SIGNALING LINE CIRCUITS (SLC) SHALL NOT BE PARALLEL BRANCHED (TEE TAPPED) TO ENSURE SUPERVISION OF WIRING.
- OBSERVE POLARITY OF ALL FIRE DETECTION WIRING. POLARITY SHALL BE MAINTAINED THROUGHOUT ENTIRE SYSTEM; WIRE SHALL BE MARKED AND IDENTIFIED WHERE SPLICED, AND AT ANY JUNCTION BOXES.
- THE FIRE ALARM PANEL GROUND SHALL BE A SEPARATE CONTINUOUS GROUND WIRE BACK TO THE SOURCE GROUND; CONDUIT GROUND IS NOT ACCEPTABLE PER MANUFACTURER'S SPECIFICATIONS.
- ALL FIELD WIRING SHALL BE CHECKED FOR SHORTS, GROUNDS, & PROPER END OF LINE RESISTOR (ELR) VALUES BEFORE SCHEDULING E-SQUARED FOR SYSTEM CHECK OUT. DOCUMENT CIRCUIT READINGS AND PRESENT TO E-SQUARED TECHNICIAN UPON INITIAL ARRIVAL ON SITE. PROVIDE E-SQUARED A MIN. OF 1 WEEK NOTICE PRIOR TO CHECK OUT.
- FIRE ALARM PANEL, AND ANY OTHER FIRE DETECTION EQUIPMENT REQUIRING 120VAC, SHALL BE SUPPLIED BY A DEDICATED CIRCUIT BREAKER OTHER (NON-FIRE DETECTION) EQUIPMENT SHALL NOT SHARE THE FIRE ALARM CIRCUIT(S). THIS BREAKER SHALL BE PROVIDED WITH A BREAKER LOCK-OUT FOR ALL FIRE ALARM EQUIPMENT AND MARKED "FIRE ALARM CIRCUIT CONTROL". 120VAC POWER BY OTHERS.
- POWER SHALL NOT BE APPLIED TO THE FIRE ALARM PANEL UNLESS A REPRESENTATIVE FROM E-SQUARED IS PRESENT.
- WIRE NUTS ARE NOT ALLOWED. ALL SPLICES ARE TO BE TERMINATED ON TERMINAL STRIPS. (APPLICABLE TO MILITARY INSTALLATIONS ONLY)
- ALL SLC, NOTIFICATION, AND SPEAKER WIRING SHALL BE STYLE 6 (CLASS A). NO OUTPUT CIRCUITS, FROM FCP, OR RETURN CIRCUITS SHALL BE RUN IN THE SAME CONDUIT. VERTICAL SEPARATION OF CONDUITS SHALL BE AT LEAST 1 FOOT AND HORIZONTAL SEPARATION SHALL BE AT LEAST 4 FEET.
- ELECTRICAL FINAL SHALL BE COMPLETED PRIOR TO SCHEDULING E-SQUARED FOR CHECK-OUT, UNLESS REQUIRED OTHERWISE BY AHJ.



Total coverage fire alarm systems are required by Puyallup Municipal Code. Fire alarm certification by UL or other qualified 3rd party is also required. See Permit Conditions.

Approval of submitted plans is not an approval of omissions or oversight by this office or non-compliance with any applicable regulations of local government. The contractor is responsible for making sure that the building complies with all applicable building codes and regulations of the local government.

THE APPROVED CONSTRUCTION PLANS AND ALL ENGINEERING MUST BE POSTED ON THE JOB AT ALL INSPECTIONS IN A VISIBLE AND READILY ACCESSIBLE LOCATION.

# LARSON JEEP 300 RIVER ROAD PUYALLUP, WA 98371 FIRE ALARM SYSTEM

DESIGNER OF RECORD:  
SANDIFER DEER  
NICET IV (FAS)  
#129796

		SYSTEM INPUT										
		CIRCUIT FAULT	LOW BATTERY	AC POWER LOSS	AC POWER LOSS	CIRCUIT FAULT	MANUAL PULL STATIONS	SMOKE/HEAT DETECTORS	SPRINKLER WATERFLOW	SPRINKLER WATERFLOW	SPRINKLER LOW AIR SWITCH	
ALARM @ FCP						X	X		X			
TROUBLE @ FCP		X	X	X	X					X	X	
SUPV. @ FCP												
ACTIVATE FIRE HORN/STROBES						X	X					
ACTIVATE FIRE WATERFLOW BELL												
TRANSMIT GEN ALM TO MONITORING						X	X					
TRANSMIT WF ALM TO MONITORING												
TRANSMIT TROUBLE TO MONITORING		X	X	X	X							
TRANSMIT SUPERVISORY TO MONITORING								X	X			
ACTIVATE UNIT HORN/STROBES						X	X					
ROLLOVER RELEASE						X	X					

		SYSTEM OUTPUT										
ACTIVATE FIRE HORN/STROBES												
ACTIVATE FIRE WATERFLOW BELL												
TRANSMIT GEN ALM TO MONITORING						X	X					
TRANSMIT WF ALM TO MONITORING												
TRANSMIT TROUBLE TO MONITORING		X	X	X	X							
TRANSMIT SUPERVISORY TO MONITORING								X	X			
ACTIVATE UNIT HORN/STROBES						X	X					
ROLLOVER RELEASE						X	X					

### BILL OF MATERIALS (BOM)

ITEM	SYM	QTY	MODEL NUMBER	DESCRIPTION	MANUFACTURER	MOUNTING
1	[FACP]	1	AFC-1000	ADDRESSABLE FIRE ALARM PANEL	POTTER	SURFACE MOUNT TOP AT 6'-0"
2		2	DUR12-12	12V-12AH BATTERY	DURACELL	MOUNTS IN FACP
3		1	UD-2000	DACT COMMUNICATOR	POTTER	MOUNT IN FACP
4	[ANN]	1	RA-6075	REMOTE ANNUNCIATOR	POTTER	SURFACE AT 5'0
5	(R)	76	PAD200-PD	PHOTOELECTRIC SMOKE DET. ADDRESSABLE	POTTER	ON BASE
6		76	PAD100-6B	6" SENSOR BASE	POTTER	4" SQ 1.5" DEEP W/S.G. MUDDING
7	(R)	1	PAD200-DUCT	DUCT DETECTOR, ADDRESSABLE	POTTER	SURFACE MOUNT ON DUCT
8		1	STN 2.5	DUCT DETECTOR SAMPLING TUBE	POTTER	IN PAD200-DUCT
9	[DRTS]	1	PAD100-DRTS	DUCT DETECTOR RESET KEY SWITCH	POTTER	SINGLE GANG BOX
10	[F]	9	PAD100-PSDA	MANUAL PULL STATION DUAL ACT.- ADDRESSABLE	POTTER	4" SQ 1.5" DEEP W/S.G. MUDDING
11	[M]	7	PAD100-SIM	MICRO SINGLE INPUT MODULE, ADDRESSABLE	SYSTEM SENSOR	IN GYM PULL STN BACK BOX
12	[W]	1	P2RK	RED WALL MOUNTED HORN/STROBE WP	SYSTEM SENSOR	WP BACK BOX
13	(C)	24	PC2RL	RED CEILING MOUNTED HORN/STROBE	SYSTEM SENSOR	4" SQ 1.5" DEEP W/S.G. MUDDING
14	(C)	4	SCRL	RED CEILING MOUNTED STROBE	SYSTEM SENSOR	4" SQ 1.5" DEEP W/S.G. MUDDING
15-40						

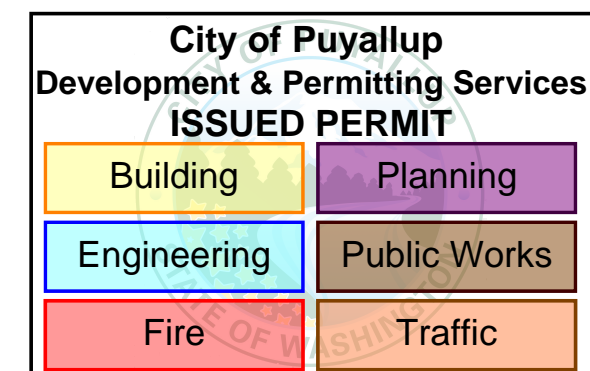
MOUNT MANUAL PULL STATIONS SO ACTUATION LEVER IS AT +48" ABOVE FINISHED FLOOR. MOUNT HORN/STROBES AND STROBES WITH BOTTOM OF STROBE AT +80" ABOVE FINISHED FLOOR. ENTIRE LENS MUST BE BETWEEN 90° & 96° AND NO LESS THAN 6" BELOW CLG. MOUNT ALL PANELS WITH TOP AT 6'-0" AFF. SET STROBE CANDELA OUTPUT AS SHOWN ON PLANS. SET INTERIOR HORNS TO LOW SETTING, EXTERIOR HORNS TO HIGH SETTING.

FOR ADDITIONAL MOUNTING OPTIONS SEE DATA SHEETS, PROVIDED.

### CABLE/CONDUCTOR LIST

	CIRCUIT TYPE	CABLE TYPE	NO.	GAUGE	COLOR
1	ADDRESSABLE CIRCUIT	FPLP	A(1,2,3,...)	16/2	RED JACKET
2	NOTIFICATION APPLIANCE CIRCUIT	FPLP	N(1,2,3,...)	14/2	RED JACKET
3	CONVENTIONAL/INTERFACE CIRCUIT	FPLP	B	16/2	RED JACKET
4	24VDC POWER	FPLP	C	16/2	RED JACKET
5	ANNUNCIATOR CIRCUIT	FPLP		14/2	RED JACKET
		THHN	J	14/1	GREEN
6	SNAC PANEL AUX POWER CIRCUIT	FPLP	P(1,2,3,...)	16/2	RED JACKET
7	BOOSTER POWER SUPPLY TRIGGER CIRCUIT	FPLP	T(1,2,3,...)	14/2	RED JACKET
8	FACP NETWORK NODE CABLE AQUASEAL AQC 226	U.G.	D	14/2	BLACK JACKET
9	TELEPHONE CABLE CONNECTION	CAT 5	P	22/8	BLUE JACKET
10					

ALL CABLES SHOULD BE 16-14AWG SOLID, MID CAPACITANCE, PLENUM AS SHOWN(EXCEPT U.G.), NON-SHIELDED. ALL CONDUITS SHOULD BE 3/4" MINIMUM/OR AS REQUIRED BY NEC 70 UNLESS OTHERWISE NOTED ON PLANS. INDOOR CABLE REPRESENTS WINDI CITY WIRE PART NUMBERS. UNDERGROUND (U.G.) CABLE REPRESENTS WEST PENN PART NUMBER.



REV.	DATE	ISSUED FOR APPROVAL	ISSUE COMMENTS
0	6-8-22		

SCALE: 1/8"=1'-0"  
FIRE/LIFE SAFETY SYSTEM  
COVER SHEET

LARSON JEEP  
FIRE ALARM SYSTEM  
300 RIVER ROAD  
PUYALLUP, WA 98371

JOB # 1276C

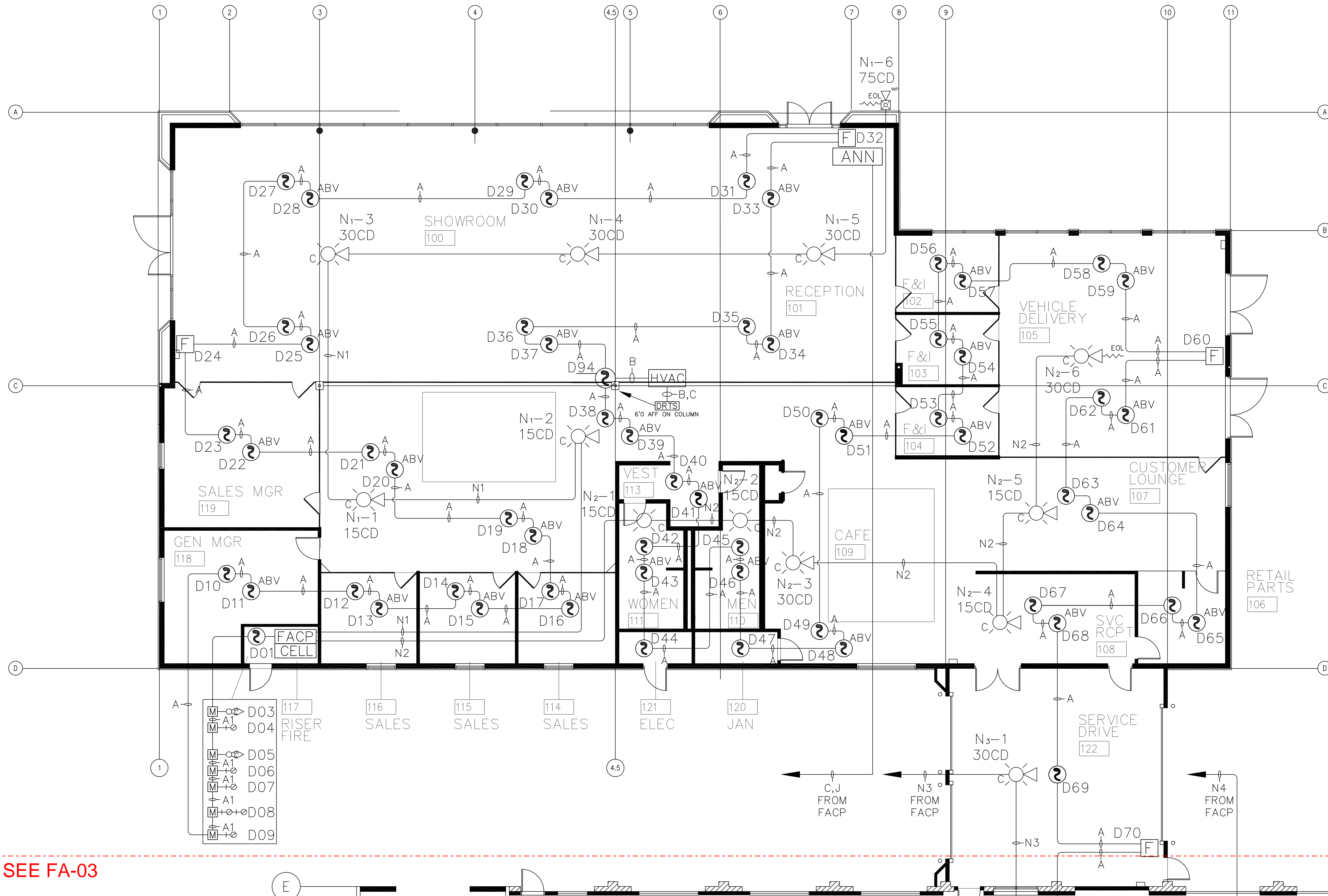
FA-01



FLOOR PLAN MAIN BLDG 1  
SCALE: 1/8"=1'-0"



DESIGNER OF RECORD:  
SANDIFER DEER  
NICET IV (FAS)  
#129796



SEE FA-03

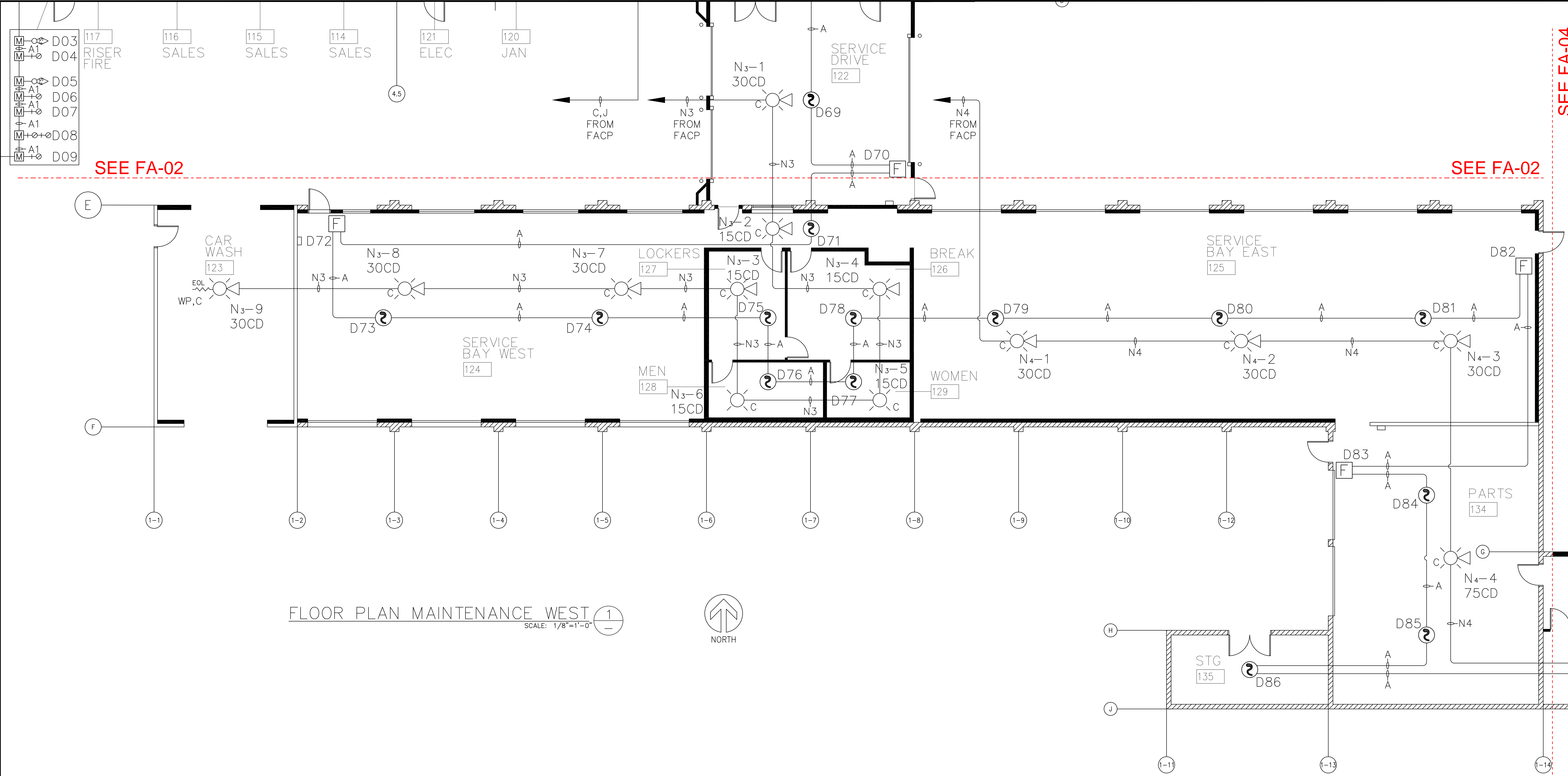
SEE FA-03

REV	DATE	BY	ISSUE COMMENTS
0	6-14-22	SJD	ISSUED FOR APPROVAL

SCALE: 1/8"=1'-0"  
FIRE/LIFE SAFETY SYSTEM  
FLOOR PLAN MAIN BLDG

LARSON JEEP  
FIRE ALARM SYSTEM  
300 RIVER ROAD  
PUYALLUP, WA 98371

JOB # 1276C



SEE FA-02

SEE FA-02

FLOOR PLAN MAINTENANCE WEST  
SCALE: 1/8"=1'-0"



SEE FA-04

SEE FA-04

**E<sup>2</sup> Systems**  
 E-SQUARED SYSTEMS, LLC  
 PO BOX 731227 PUYALLUP, WA 98373  
 PH: 253.284.3707 FAX: 253.284.3714

REV	DATE	BY	ISSUED FOR APPROVAL	ISSUE COMMENTS
0	6-14-22	SD		

SCALE: 1/8"=1'-0"  
 FIRE/LIFE SAFETY SYSTEM  
 FLOOR PLAN MAINT BLDG WEST

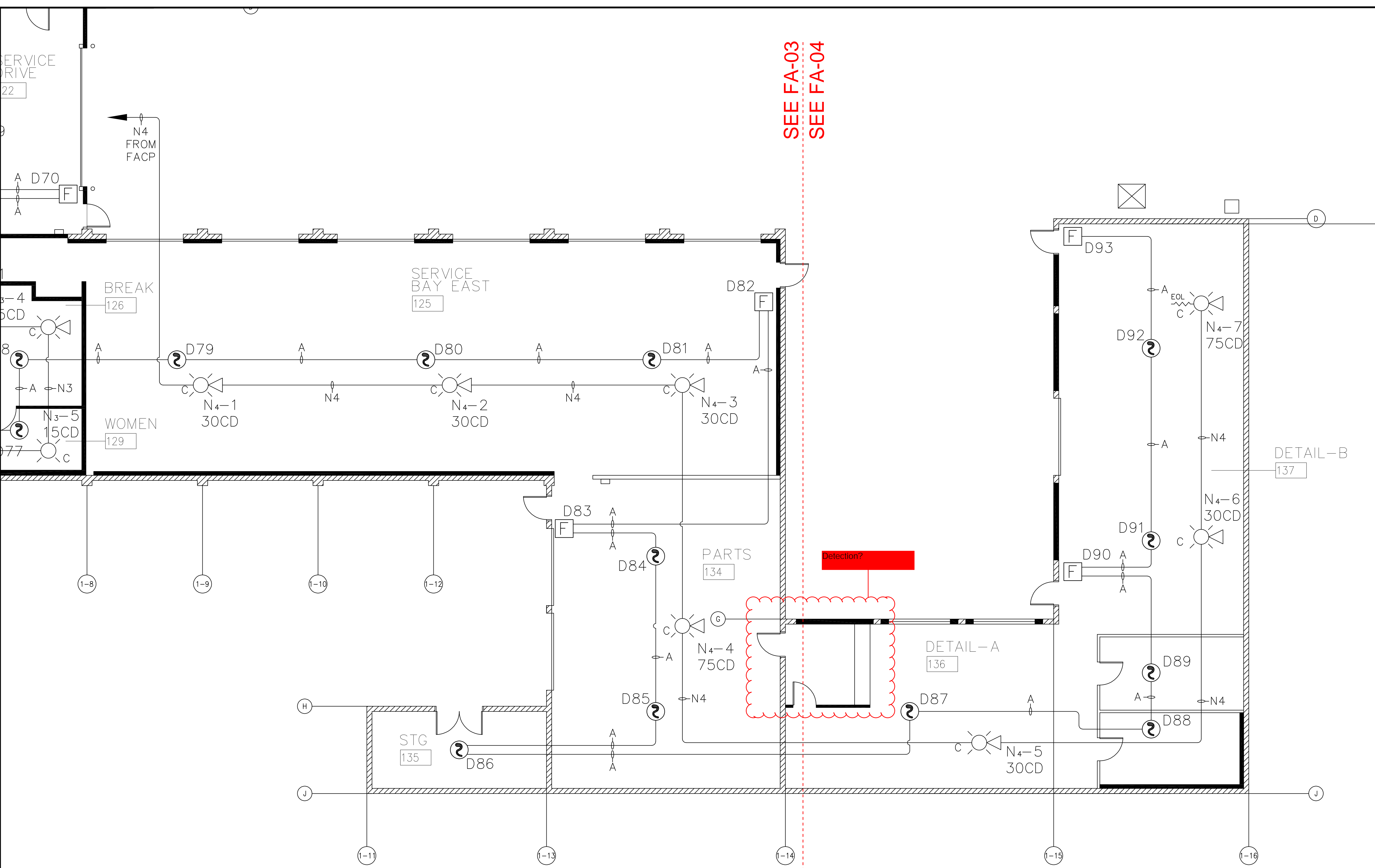
City of Puyallup  
 Development & Permitting Services  
**ISSUED PERMIT**

Building	Planning
Engineering	Public Works
Fire	Traffic

LARSON JEEP  
 FIRE ALARM SYSTEM  
 300 RIVER ROAD  
 PUYALLUP, WA 98371

JOB # 1276C

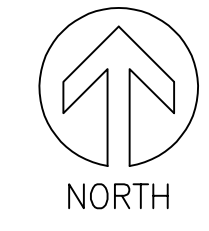
FA-03



SEE FA-03  
SEE FA-04

SEE FA-03  
SEE FA-04

FLOOR PLAN MAINTENANCE EAST  
SCALE: 1/8"=1'-0"



City of Puyallup  
Development & Permitting Services  
ISSUED PERMIT

Building	Planning
Engineering	Public Works
Fire	Traffic

REV.	DATE	ISSUED FOR APPROVAL	ISSUE COMMENTS
0	6-14-22		

SCALE: 1/8"=1'-0"  
FIRE/LIFE SAFETY SYSTEM  
FLOOR PLAN MAINT BLDG EAST

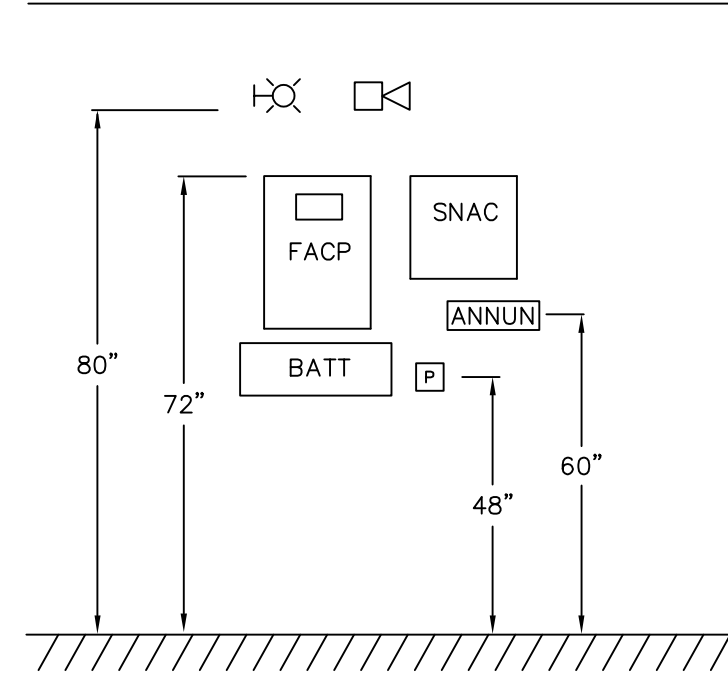
LARSON JEEP  
FIRE ALARM SYSTEM  
300 RIVER ROAD  
PUYALLUP, WA 98371

JOB # 1276C

FA-04



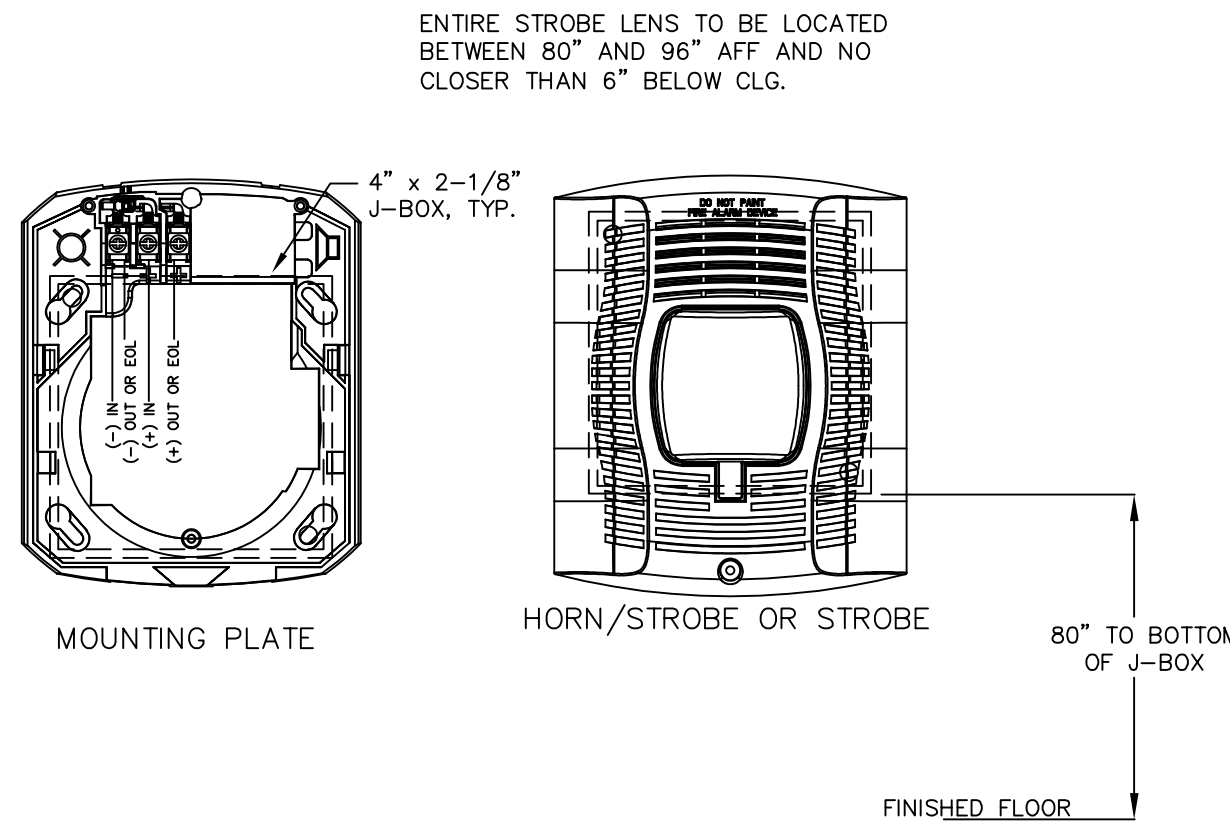
DESIGNER OF RECORD:  
SANDIFER DEER  
NICET IV (FAS)  
#129796



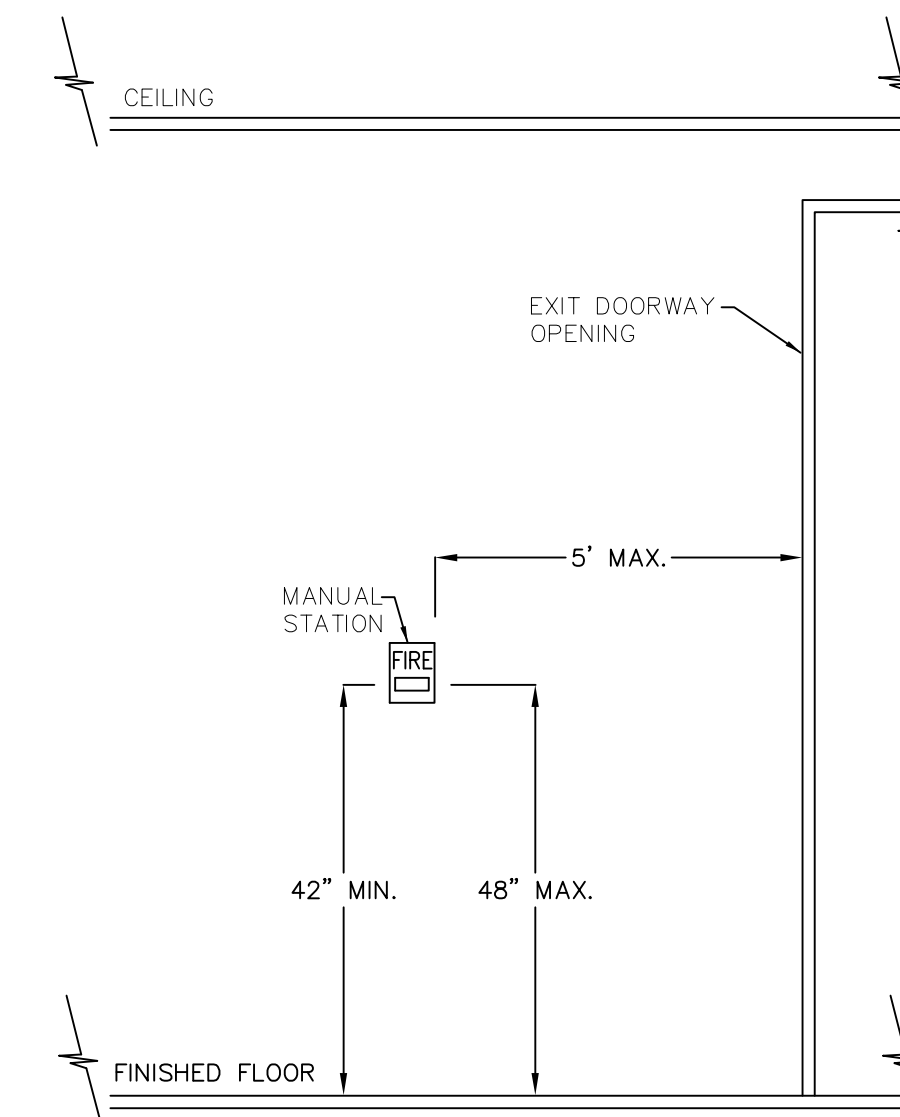
EQUIPMENT MOUNTING DETAIL (1)  
SCALE: NTS

NOTES:

1. DETAIL NOT INTENDED TO SHOW SPATIAL RELATIONSHIP OF DEVICES. REFERENCE FLOOR PLANS FOR ACTUAL LOCATIONS.

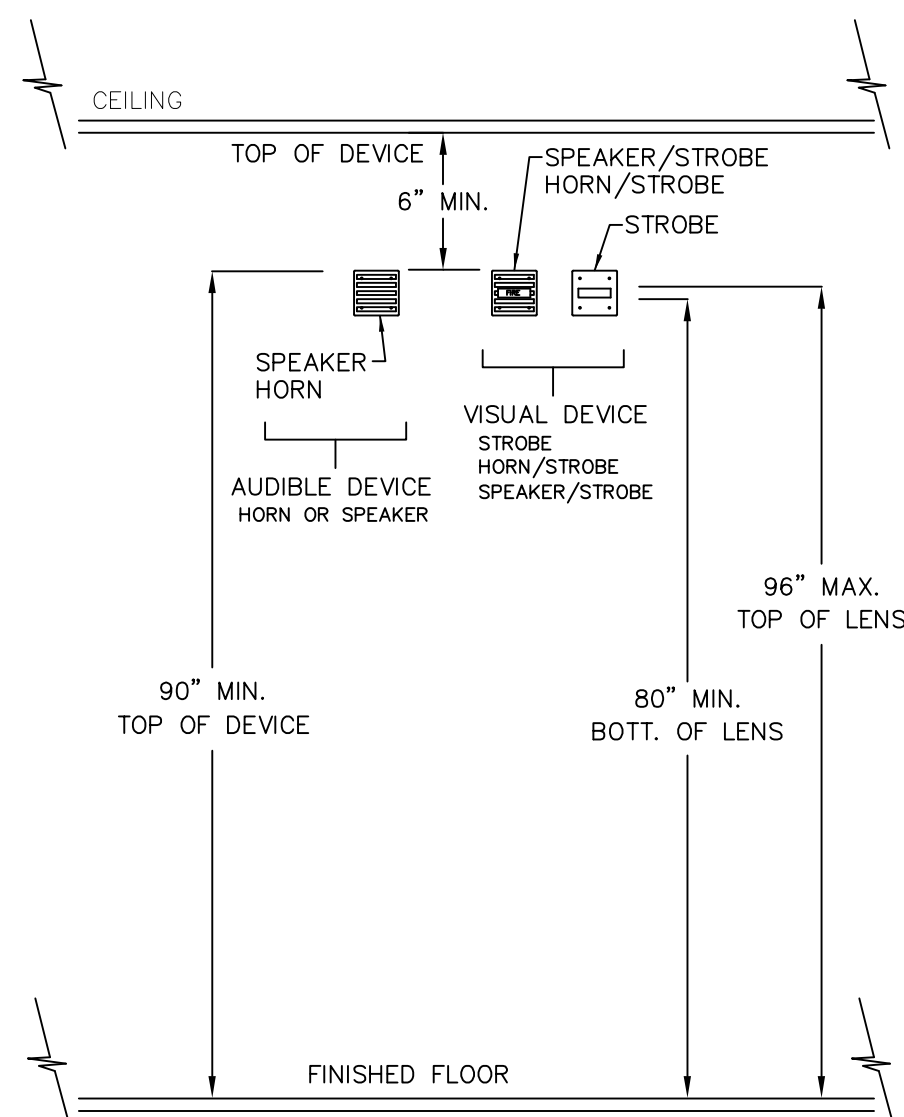


TYPICAL HORN & STROBE WALL MOUNT DETAIL (2)  
SCALE: NTS



- INSTALLATION NOTES:
1. THE OPERABLE PART OF EACH MANUAL FIRE ALARM BOX SHALL BE NOT LESS THEN 42" AND NOT GREATER THAN 48" A.F.F.
  2. MANUAL FIRE ALARM BOXES SHALL BE LOCATED WITHIN 5" OF THE EXIT DOORWAY OPENING ON EACH FLOOR.

MANUAL STATION MOUNTING DETAILS (3)  
SCALE: NTS

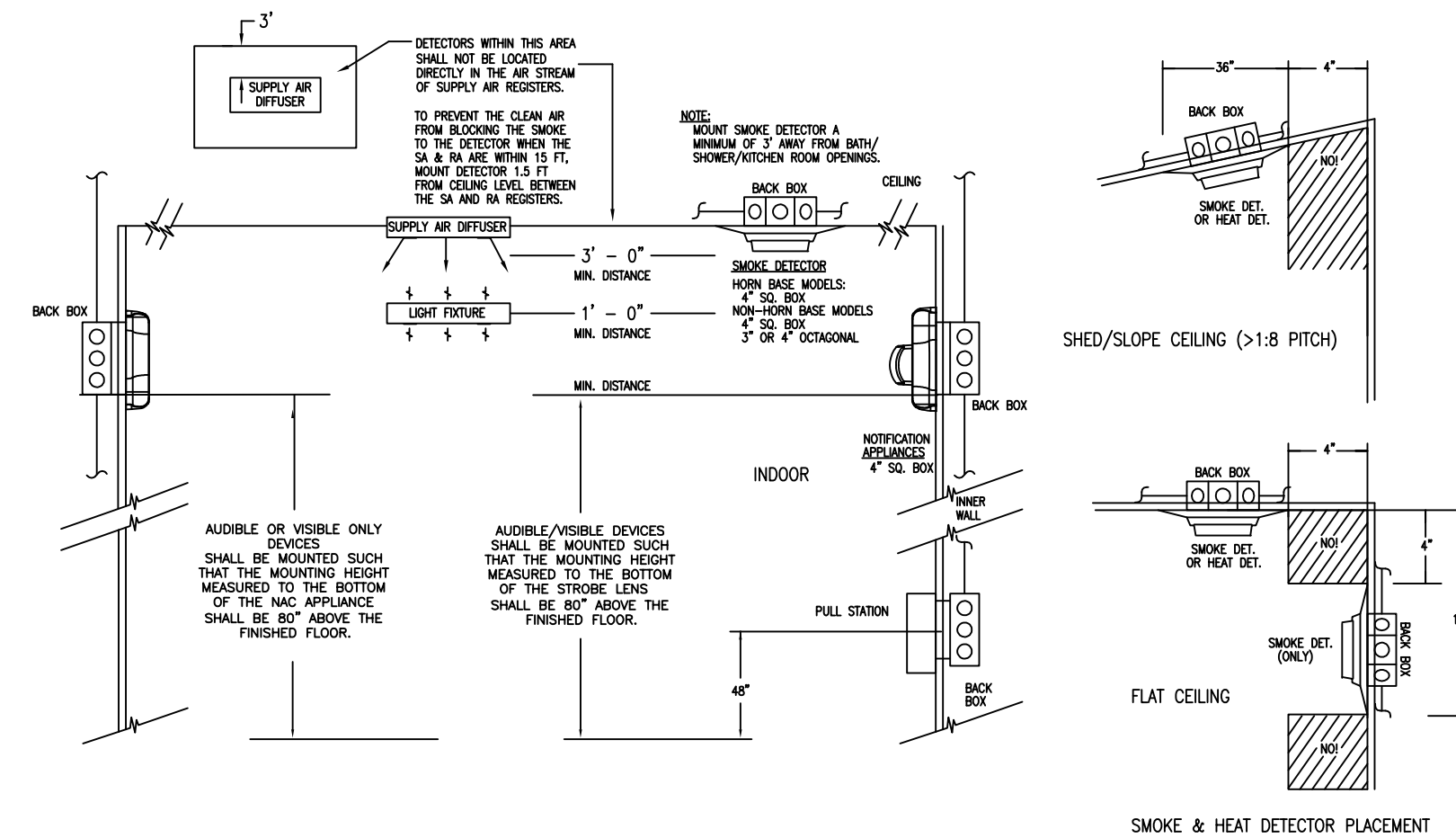


DETAILS SHOWN ARE TYPICAL AND ALL DETAILS MAY NOT APPLY TO ALL JOBS. REF. LAYOUT DRAWINGS & B.O.M.

INSTALLATION NOTES:

1. MOUNT VISUAL AND COMBINATION AUDIBLE/VISUAL APPLIANCES SUCH THAT THE ENTIRE LENS IS NOT LESS THAN 80" AND NOT GREATER THAN 96" A.F.F.
2. MOUNT AUDIBLE APPLIANCES SUCH THAT THE TOP OF THE APPLIANCE IS AT A MINIMUM HEIGHT OF 90" A.F.F. AND BELOW THE FINISHED CEILING AT A MINIMUM HEIGHT 6".
3. IN AREAS WHERE MORE THEN TWO VISIBLE NOTIFICATION APPLIANCES ARE IN ANY FIELD OF VIEW, THEY SHALL FLASH IN SYNCHRONIZATION.
4. IN CORRIDOR APPLICATIONS:
  - A. VISIBLE NOTIFICATION APPLIANCES SHALL BE LOCATED WITHIN 15' FROM THE END OF A CORRIDOR WITH SEPARATION NOT GREATER THAN 100' BETWEEN APPLIANCES.
  - B. WALL-MOUNTED VISIBLE NOTIFICATION APPLIANCES SHALL BE PERMITTED IN EITHER THE END WALL OR THE SIDE WALL OF THE CORRIDOR.
  - C. IF THERE IS AN INTERRUPTION OF THE CONCENTRATED VIEWING PATH, SUCH AS A FIRE DOOR, AN ELEVATION CHANGE, OR ANY OTHER OBSTRUCTION, THE AREA SHALL BE TREATED AS A SEPARATE CORRIDOR.
5. SLEEPING AREAS:
  - A. FOR ROOMS WITH A LINEAR DIMENSION GREATER THAN 16', THE VISIBLE NOTIFICATION APPLIANCES SHALL BE LOCATED WITHIN 16' OF THE HULLOW.
  - B. IF THE DISTANCE FROM THE TOP OF THE STROBE LENS IS EQUAL TO OR GREATER THEN 24" FROM THE CEILING THEN THE STROBE SHALL BE 110cd. IF THE DISTANCE FROM THE TOP OF THE STROBE LENS IS LESS THEN 24" TO THE CEILING THE STROBE SHALL BE 177cd.

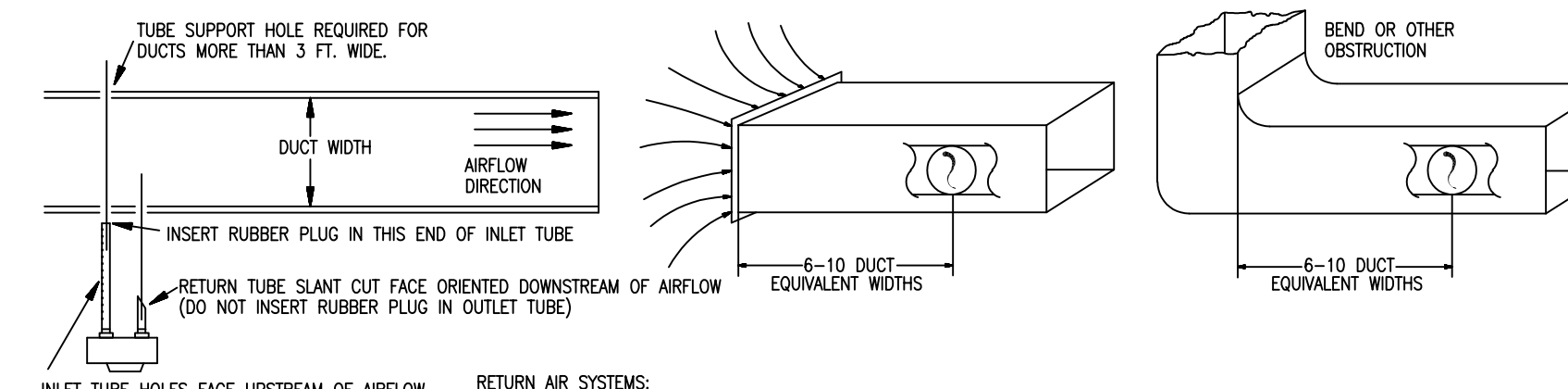
MOUNTING HEIGHTS FOR WALL MOUNTED NOTIF APPLIANCES (4)  
SCALE: NTS



GENERAL NOTES:

- A. DO NOT APPLY POWER TO ANY DEVICE UNTIL AUTHORIZED BY A HONEYWELL REPRESENTATIVE.
- B. SEE FLOOR PLANS FOR ALL DEVICE LOCATIONS, DEVICE COUNTS, AND DEVICE ADDRESSES.
- C. FOLLOW DEVICE INSTALLATION INSTRUCTIONS INCLUDED WITH DEVICES.
- D. DETECTOR GUIDELINES:
  - NO SMOKE DETECTORS ALLOWED IN GARAGES.
  - NO SMOKE DETECTORS ALLOWED IN UNFINISHED ATTICS.
  - NO SMOKE DETECTORS ALLOWED IN AREAS WITH >100°F OR <40°F.
  - ION SMOKE DETECTORS MUST BE > 20" FROM COOKING APPLIANCES.
  - (PHOTO SMOKE DETECTORS ALLOWED <20" FROM COOKING APPLIANCE)
  - NO SMOKE DETECTORS WITHIN 3' FROM DOOR TO KITCHEN OR SHOWER/TUB ROOM
  - NO SMOKE DETECTORS WITHIN 3' HORIZONTAL FROM CEILING FAN BLADE TIP.
  - SMOKE DETECTORS ARE REQUIRED IN BASEMENTS ON CEILING ADJACENT TO STAIRWELLS.

ADDITIONAL DEVICE MOUNTING DETAILS (5)  
SCALE: NTS



RETURN AIR SYSTEMS:  
SMOKE DETECTORS SHALL BE INSTALLED IN RETURN AIR SYSTEMS WITH A DESIGN CAPACITY GREATER THAN 2000 CFM (0.09 m/s) IN THE RETURN AIR DUCT OR PLENUM UPSTREAM OF ANY FILTERS, EXHAUST AIR CONNECTIONS, OUTDOOR AIR CONNECTIONS OR DECONTAMINATION EQUIPMENT AND APPLIANCES.

COMMON SUPPLY AND RETURN AIR SYSTEMS:  
WHERE MULTIPLE AIR HANDLING SYSTEMS SHARE COMMON SUPPLY OR RETURN AIR DUCTS OR PLENUMS WITH A COMBINED DESIGN CAPACITY GREATER THAN 2000 CFM (0.9m<sup>3</sup>/s), THE RETURN AIR SYSTEM SHALL BE PROVIDED WITH SMOKE DETECTORS.

RETURN AIR RISERS:  
WHERE RETURN AIR RISERS SERVE TWO OR MORE STORES AND SERVE ANY PORTION OF A RETURN AIR SYSTEM HAVING A DESIGN CAPACITY GREATER THAN 15000 CFM (7.1m<sup>3</sup>/s), SMOKE DETECTORS SHALL BE INSTALLED AT EACH STOREY. SUCH SMOKE DETECTORS SHALL BE LOCATED UPSTREAM OF THE CONNECTION BETWEEN THE RETURN AIR RISER AND ANY AIR DUCTS OR PLENUMS

SUPPLY AIR SMOKE DETECTORS:  
IF INSTALLED, SUPPLY AIR SMOKE DETECTORS SHALL BE MOUNTED IN THE DUCT DOWNSTREAM OF BOTH THE FAN AND THE FILTERS. ADDITIONAL SMOKE DETECTORS IN THE SUPPLY AIR SYSTEM ARE NOT REQUIRED WHERE THE AIR PASSES THROUGH OTHER SMOKE COMPARTMENTS.

SMOKE DAMPERS THAT ARE PART OF A SMOKE BARRIER SHALL BE INSTALLED IN THE PLANE OF THE FIRE PARTITION AND NOT AFTER THE FIRST AIR DUCT INLET OR OUTLET, WHICHEVER IS CLOSER TO THE SMOKE BARRIER. IF THE SMOKE DAMPER IS CONTROLLED BY AIR SYSTEM SMOKE DETECTOR IT SHALL BE LOCATED UPSTREAM OF THE SMOKE DAMPER BUT AFTER ANY INLET OR OUTLET IN THAT DUCT.

WHERE IN-DUCT SMOKE DETECTORS ARE INSTALLED IN CONCEALED LOCATIONS MORE THAN 10ft ABOVE THE FINISHED FLOOR, OR IN ARRANGEMENTS WHERE THE DETECTOR'S ALARM LIGHT IS NOT READILY VISIBLE TO RESPONDING PERSONNEL, THE DETECTOR SHALL BE PROVIDED WITH REMOTE ALARM INDICATORS TO BE INSTALLED IN A READILY ACCESSIBLE LOCATION AND SHALL BE CLEARLY LABELED TO INDICATE BOTH THEIR FUNCTION AND THE AIR HANDLING UNIT(S) ASSOCIATED WITH EACH DETECTOR. (EXCEPTION: WHERE THE SPECIFIC DETECTOR IN ALARM IS INDICATED AT THE CONTROL UNIT)

DUCT DETECTOR MOUNTING DETAILS (6)  
SCALE: NTS

City of Puyallup  
Development & Permitting Services  
ISSUED PERMIT

Building	Planning
Engineering	Public Works
Fire	Traffic

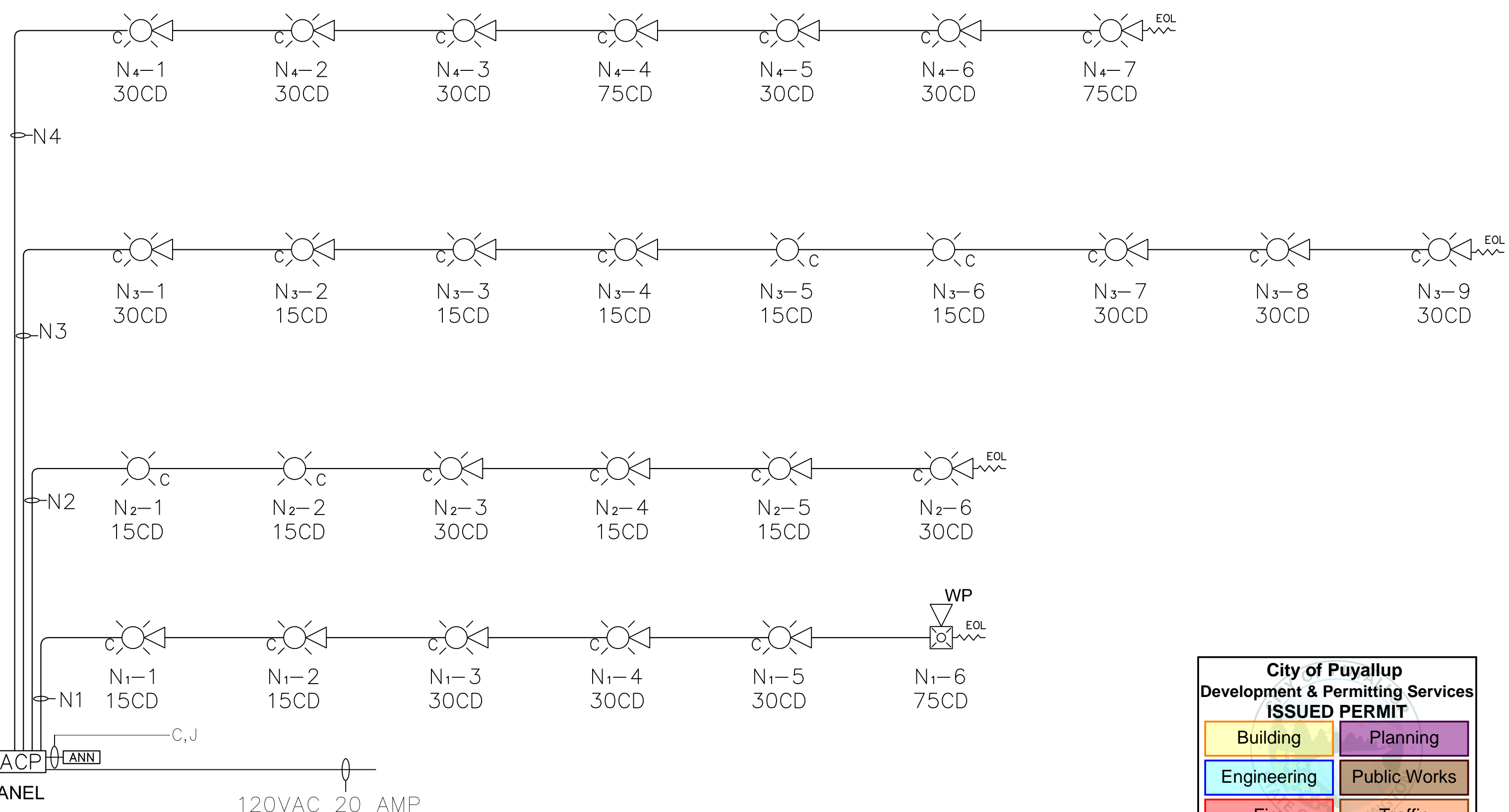
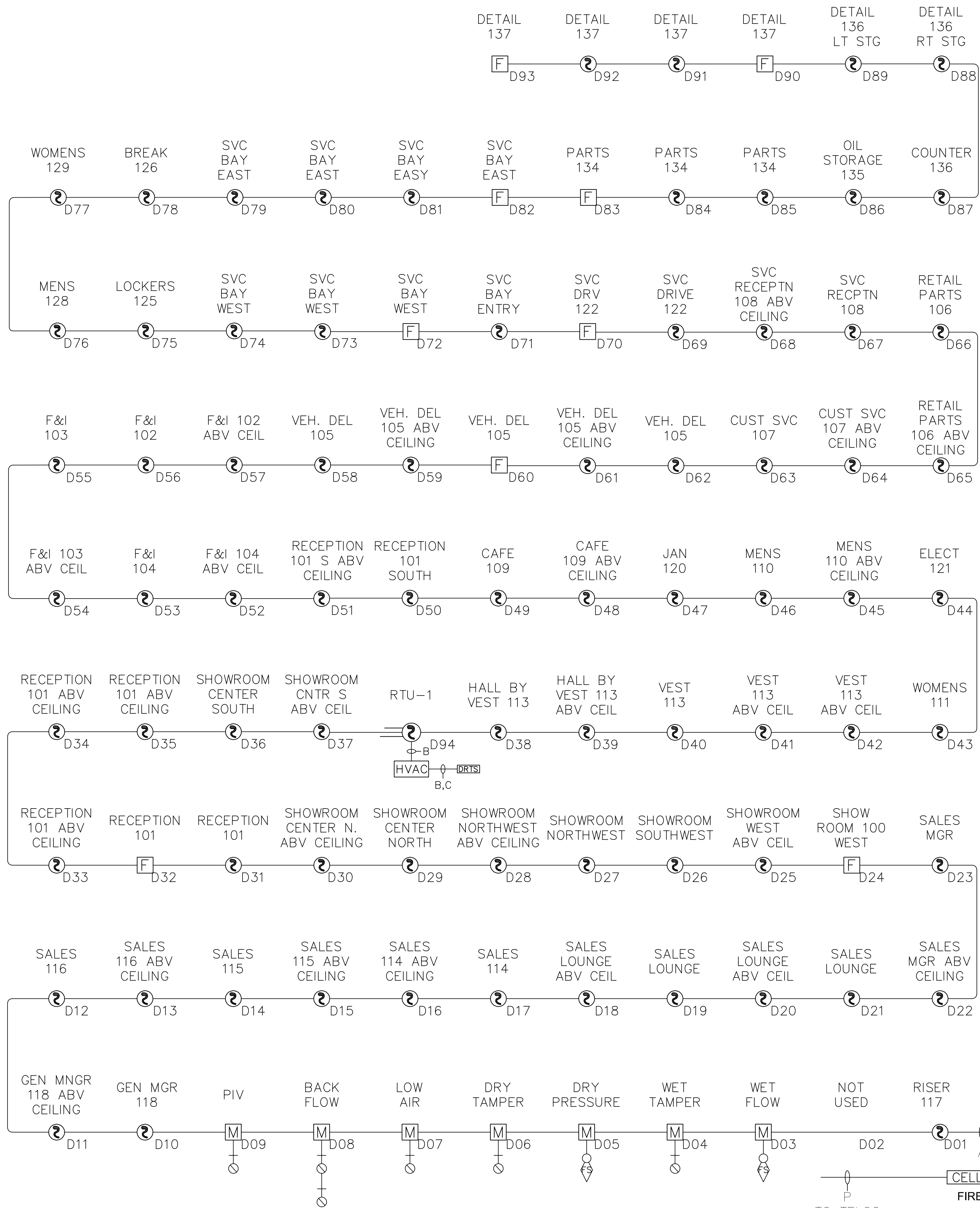
REV.	DATE	ISSUED FOR APPROVAL	ISSUE COMMENTS
0	6-14-22		

SCALE: 1/8"=1'-0"  
FIRE/LIFE SAFETY SYSTEM  
MOUNTING DETAIL

LARSON JEEP  
FIRE ALARM SYSTEM  
300 RIVER ROAD  
PUYALLUP, WA 98371

JOB # 1276C

FA-07



CELLIFACP  
FIRE PANEL  
TO TELCO  
120VAC 20 AMP DEDICATED BREAKER IN MECH

RISER DIAGRAMS (1)  
SCALE: 1/8"=1'-0"

City of Puyallup  
Development & Permitting Services  
ISSUED PERMIT

Building	Planning
Engineering	Public Works
Fire	Traffic

REV	DATE	ISSUED FOR	APPROVAL
0	6-14-22		

SCALE: 1/8"=1'-0"  
FIRE/LIFE SAFETY SYSTEM  
RISER DIAGRAM

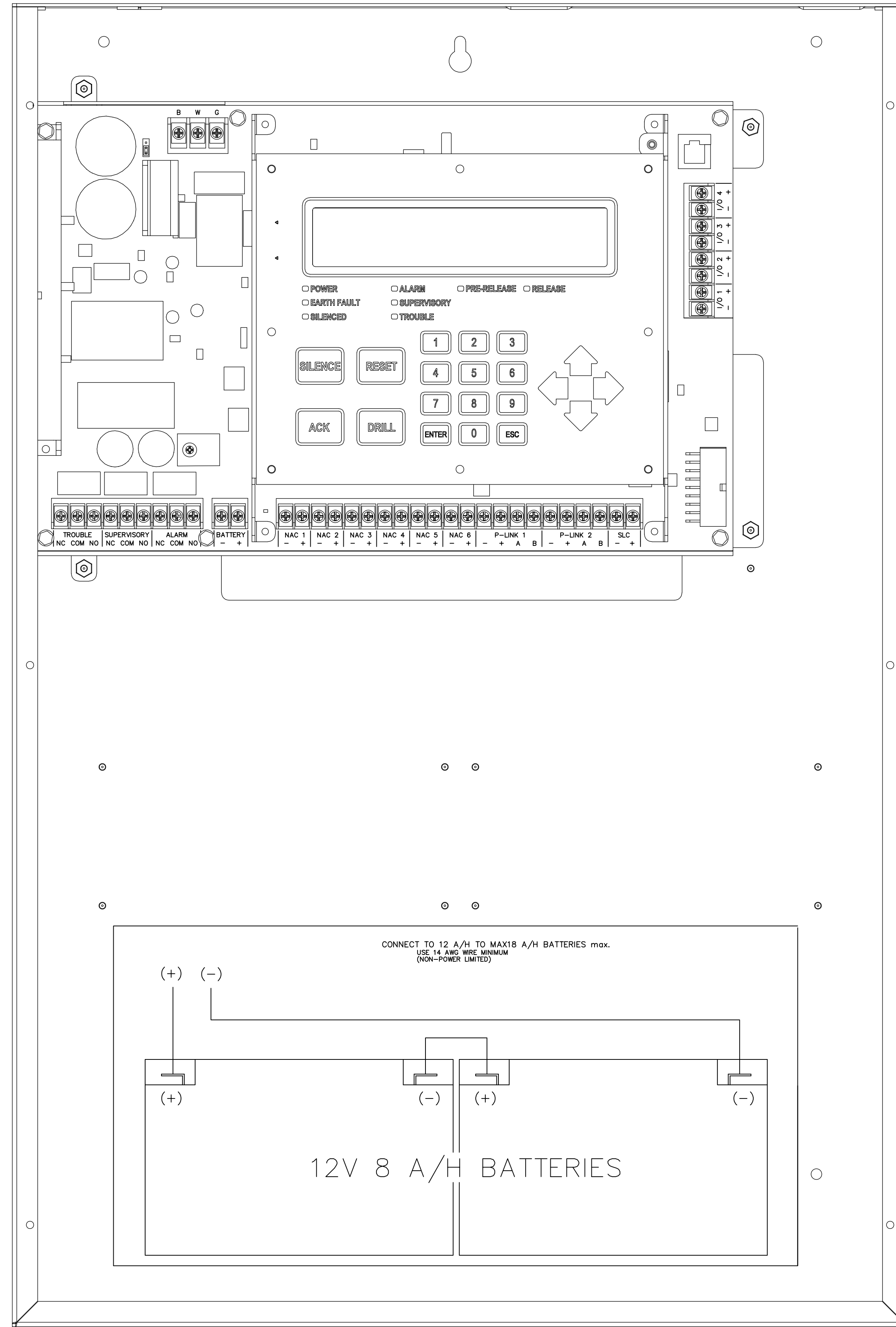
LARSON JEEP  
FIRE ALARM SYSTEM  
300 RIVER ROAD  
PUYALLUP, WA 98371

JOB # 1276C

FA-05



DESIGNER OF RECORD:  
SANDIFER DEER  
NICET IV (FAS)  
#129796



POTTER AFC-100 CONTROL PANEL WIRING TERMINALS 1  
SCALE: NTS

- △ CONNECT TO EARTH GROUND PER ARTICLE 760 OF NEC. FAILURE TO CONNECT TO A METALLIC GROUND WATER PIPE OR GROUND ROD WILL RESULT IN LOSS OF LIGHTNING PROTECTION. PANEL NEUTRAL OR CONDUIT GROUND IN NOT ACCEPTABLE. USE #14 AWG MINIMUM.
- △ CONNECT TO 12 A/H TO 18 A/H BATTERIES, MAX. USE #14 AWG WIRE MIN. (NON-POWER LIMITED)

**POTTER PAD PROTOCOL SLC DEVICE ADDRESSING INFORMATION**

**PAD Device Dip Switch Addresses Table (Addresses 1-78)**

Address	Switch Number					Address	Switch Number					Address	Switch Number					
	1	2	4	8	16		1	2	4	8	16		1	2	4	8	16	32
1	●					27	●	●	●	●		53	●	●	●	●	●	
2	●	●				28	●	●	●	●		54	●	●	●	●	●	
3	●	●	●			29	●	●	●	●		55	●	●	●	●	●	
4	●	●	●	●		30	●	●	●	●		56	●	●	●	●	●	
5	●	●	●	●	●	31	●	●	●	●		57	●	●	●	●	●	
6	●	●	●	●	●	32	●	●	●	●		58	●	●	●	●	●	
7	●	●	●	●	●	33	●	●	●	●		59	●	●	●	●	●	
8	●	●	●	●	●	34	●	●	●	●		60	●	●	●	●	●	
9	●	●	●	●	●	35	●	●	●	●		61	●	●	●	●	●	
10	●	●	●	●	●	36	●	●	●	●		62	●	●	●	●	●	
11	●	●	●	●	●	37	●	●	●	●		63	●	●	●	●	●	
12	●	●	●	●	●	38	●	●	●	●		64	●	●	●	●	●	
13	●	●	●	●	●	39	●	●	●	●		65	●	●	●	●	●	
14	●	●	●	●	●	40	●	●	●	●		66	●	●	●	●	●	
15	●	●	●	●	●	41	●	●	●	●		67	●	●	●	●	●	
16	●	●	●	●	●	42	●	●	●	●		68	●	●	●	●	●	
17	●	●	●	●	●	43	●	●	●	●		69	●	●	●	●	●	
18	●	●	●	●	●	44	●	●	●	●		70	●	●	●	●	●	
19	●	●	●	●	●	45	●	●	●	●		71	●	●	●	●	●	
20	●	●	●	●	●	46	●	●	●	●		72	●	●	●	●	●	
21	●	●	●	●	●	47	●	●	●	●		73	●	●	●	●	●	
22	●	●	●	●	●	48	●	●	●	●		74	●	●	●	●	●	
23	●	●	●	●	●	49	●	●	●	●		75	●	●	●	●	●	
24	●	●	●	●	●	50	●	●	●	●		76	●	●	●	●	●	
25	●	●	●	●	●	51	●	●	●	●		77	●	●	●	●	●	
26	●	●	●	●	●	52	●	●	●	●		78	●	●	●	●	●	

**NOTE:** Each Box With Circle (●) Indicates Dip Switch is "ON", Each Empty Box Indicates "OFF"

**PAD Device Dip Switch Addresses Table (Addresses 79 - 127)**

Address	Switch Number					Address	Switch Number					
	1	2	4	8	16		1	2	4	8	16	32
79	●	●	●	●	●	105	●	●	●	●	●	●
80	●	●	●	●	●	106	●	●	●	●	●	●
81	●	●	●	●	●	107	●	●	●	●	●	●
82	●	●	●	●	●	108	●	●	●	●	●	●
83	●	●	●	●	●	109	●	●	●	●	●	●
84	●	●	●	●	●	110	●	●	●	●	●	●
85	●	●	●	●	●	111	●	●	●	●	●	●
86	●	●	●	●	●	112	●	●	●	●	●	●
87	●	●	●	●	●	113	●	●	●	●	●	●
88	●	●	●	●	●	114	●	●	●	●	●	●
89	●	●	●	●	●	115	●	●	●	●	●	●
90	●	●	●	●	●	116	●	●	●	●	●	●
91	●	●	●	●	●	117	●	●	●	●	●	●
92	●	●	●	●	●	118	●	●	●	●	●	●
93	●	●	●	●	●	119	●	●	●	●	●	●
94	●	●	●	●	●	120	●	●	●	●	●	●
95	●	●	●	●	●	121	●	●	●	●	●	●
96	●	●	●	●	●	122	●	●	●	●	●	●
97	●	●	●	●	●	123	●	●	●	●	●	●
98	●	●	●	●	●	124	●	●	●	●	●	●
99	●	●	●	●	●	125	●	●	●	●	●	●
100	●	●	●	●	●	126	●	●	●	●	●	●
101	●	●	●	●	●	127	●	●	●	●	●	●
102	●	●	●	●	●							
103	●	●	●	●	●							
104	●	●	●	●	●							

**Switch Setting Examples**

All dip switches are set to the default "OFF" position. (Device Not Addressed)

Dip switches set for address 42. Switches #2, 8 & 32 are "ON". (2 + 8 + 32 = 42)

Dip switches set for address 90. Switches #2, 8, 16 & 64 are "ON". (2 + 8 + 16 + 64 = 90)

PAD SERIES DEVICE ADDRESSING 2  
SCALE: NTS

**City of Puyallup**  
Development & Permitting Services  
**ISSUED PERMIT**

Building	Planning
Engineering	Public Works
Fire	Traffic

REV.	DATE	BY	ISSUED FOR APPROVAL	ISSUE COMMENTS
0	6-14-22			

SCALE: 1/8" = 1'-0"  
**FIRE/LIFE SAFETY SYSTEM**  
PANEL DIAGRAM

**LARSON JEEP**  
**FIRE ALARM SYSTEM**  
300 RIVER ROAD  
PUYALLUP, WA 98371

JOB # 1276C