

ROOF DECK INSTALLATION PLAN

(REF SHT: S2)
SCALE: N.T.S.

ROOF JOIST PLACEMENT PLAN

(REF SHT: S2)
SCALE: N.T.S.

NMBS DECK ERECTION NOTES

DECK DELIVERY & UNLOADING

1. VERIFY QUANTITIES AND CONDITION OF DECK AND ACCESSORIES UPON ARRIVAL. INFORM NMBS IMMEDIATELY OF ANY SHORTAGES, DISCREPANCIES OR DAMAGES.
2. NMBS WILL SUPPLY ONLY THE MATERIAL LISTED ON THE BILLS OF MATERIAL.
3. STACK STEEL DECK ON PLATFORMS OR PALLETS AND SLOPE TO ALLOW DRAINAGE. PROTECT DECK WITH A WATERPROOF COVERING AND VENTILATE TO AVOID CONDENSATION.

NMBS GENERAL NOTES

1. DECK MUST BE POSITIVELY ATTACHED TO SUPPORTS IN ACCORDANCE WITH DECK FASTENING REQUIREMENTS, TO PROVIDE LATERAL STABILITY, U.N.O. ON PLANS.
2. N.I.N.C. - NOT IN NMBS CONTRACT U.N.O. - UNLESS NOTED OTHERWISE
3. NMBS WILL NOT ACCEPT RESPONSIBILITY OR CHARGES FOR ANY FIELD CORRECTIONS MADE WITHOUT PRIOR NMBS APPROVAL.

ERECT ALL DECK PRODUCTS AND ACCESSORIES IN ACCORDANCE WITH THE SPECIFICATIONS OF THE STEEL DECK INSTITUTE (SDI)

HANDLING / STORAGE INFORMATION

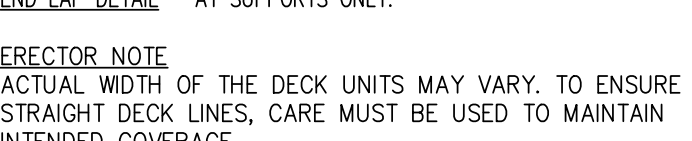
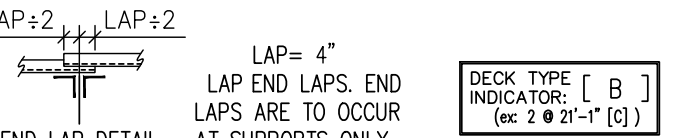
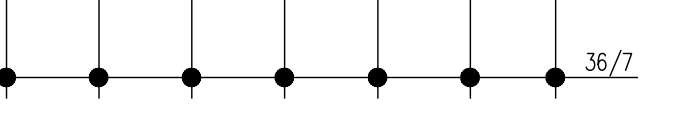
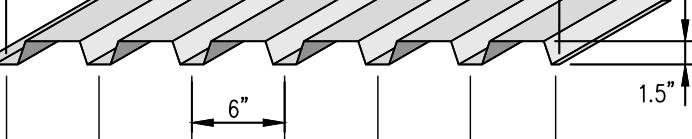
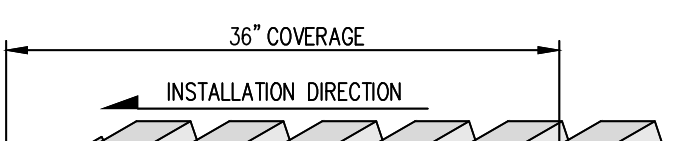
- **JOB SITE STORAGE:** WHETHER STEEL DECK IS PRIME-COATED OR GALVANIZED, IT IS IMPERATIVE TO PROTECT IT FROM THE ELEMENTS WITH A WATERPROOF COVERING THAT IS VENTILATED TO AVOID CONDENSATION. ALWAYS STORE DECK OFF THE GROUND WITH ONE END ELEVATED. WHEN DECK IS SUPPLIED WITH PLASTIC END SEALS, THE END SEAL SHOULD BE AT THE ELEVATED END. DO NOT ALLOW WATER TO BECOME TRAPPED IN THE DECK BUNDLES UNDER ANY CIRCUMSTANCES.

- **PRIME PAINTED DECK:** FIELD PAINTING OF PRIME PAINTED DECK IS RECOMMENDED ESPECIALLY WHERE THE DECK IS EXPOSED. IN NO CASE SHOULD THE PRIME PAINTED FINISH BE CONSIDERED A PERMANENT FINISH COAT.

- **STORAGE SHALL COMPLY WITH SDI'S MANUAL OF CONSTRUCTION WITH STEEL DECK.**

ROOF DECK

MANUFACTURING LOCATION: BUTLER



TYPE	GAUGE	FINISH	Grade
B	20	G30/GRAY TOP/WHITE BOTTOM	80 ksi

DESIGN Fx
60 ksi

SUPPORT ATTACHMENT

ATTACH DECK TO ALL SUPPORTS WITH 5/8" PUDDLE WELDS USING PATTERNS/SPACING INDICATED:
INTERMEDIATE: 36/7

ENDS/END LAPS: 36/7

PERIMETER: 6" O.C.

ATTACH PARTIAL SHEETS IN ALL FLUTES (FASTENERS NINC)

SIDE LAP ATTACHMENT

SIDE LAPS TO BE ATTACHED BETWEEN SUPPORTS WITH

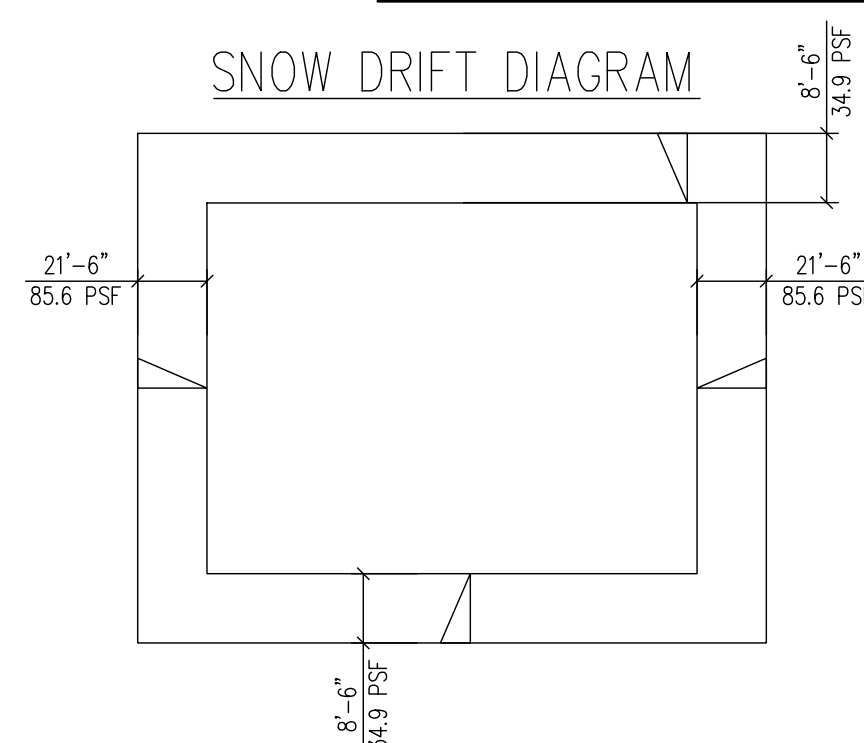
#10 TEK SCREWS (3) EQUAL SPACES

GC NOTE: THIS DECK IS FACTORY MUTUAL (FM) APPROVED. IF FM APPROVED ROOFING IS A REQUIREMENT FOR THIS PROJECT, REFER TO www.roofing.com FOR FM APPROVALS, STEEL DECK SPANS, AND FASTENING REQUIREMENTS.

DECK ERECTOR NOTE:
IN THE DIRECTION OF COVERAGE, PLEASE PULL/KICK ALL SHEETS TIGHT, MAXIMIZING THE ENTIRE SHEET WIDTH TO INSURE PROPER COVERAGE WHEN MULTIPLE SHEETS ARE INVOLVED. FAILURE TO DO SO COULD CREATE SHORTAGES AT THE OPPOSITE SIDE OF THE BUILDING AND PURCHASE OF ADDITIONAL DECKING IS NOT THE RESPONSIBILITY OF NMBS.

DECK INSTALLATION PLAN NOTES:

1. SEE DRAWING J1.0 FOR ERECTION NOTES, SECTIONS AND DETAILS.
2. FIELD CUT DECK AS REQUIRED. USE ALL DROPS AS REQUIRED.
3. INDICATES DECK INSTALLATION START POINT.
4. INDICATES DECK BUNDLE NUMBER.
5. D.E. = DECK EDGE, F.C. = FIELD CUT
6. [B] INDICATES 1.5B, 20 GA, G30 GRAY TOP/WHITE BOTTOM PRIMED ROOF DECK.



ERECTOR NOTE:
ALL STANDARD/UPLIFT BRIDGING AS WELL AS BRIDGING CALLED OUT AS "TERMINATION BRIDGING", IN TYPICAL BRIDGING SECTIONS SHOWN ON DRAWING J1.x, MUST BE INSTALLED PRIOR TO DECK INSTALLATION AND THE APPLICATION OF JOIST LOADS.

LOAD KEY

CONCENTRATED LOAD (KIPS) - EXACT LOCATION NOT SPECIFIED, FIELD INSTALLED WEB MEMBER REQUIRED IF LOAD IS NOT LOCATED AT A TOP OR BOTTOM CHORD PANEL POINT.

JOIST PLACEMENT PLAN NOTES:

1. SEE DRAWING J1.0 FOR ERECTION NOTES, SECTIONS AND DETAILS.
2. ALL JOISTS WILL BE FABRICATED WITH STANDARD SJI CAMBER.
3. ALL ROOF JOISTS ARE TO BE DESIGNED FOR 14.7 PSF NET UPLIFT (ASD SERV).
4. ORIENT TAGGED END OF JOIST AT MARKED END ON PLAN.
5. (X") DENOTES BEAM TOP FLANGE WIDTH.
6. - - - - - INDICATES WELDED HORIZONTAL BRIDGING @ TOP & BOTTOM CHORD.
MK: H_ (SEE PLAN)
7. - - - - - INDICATES WELDED HORIZONTAL UPLIFT BRIDGING @ BOTTOM CHORD.
MK: H_ (SEE PLAN)
8. INDICATES WELDED DIAGONAL BRIDGING.
MK: W_ (SEE PLAN)
9. JOISTS TO BE DESIGNED ACCORDING TO 2018 IBC.
10. ALL JOISTS ARE DESIGNED WITH LL DEFLECTION LIMIT = L/240 (U.N.O. [L/360] SHOWN ON PLAN.)

DATE:	DRAWING HISTORY:	EMAIL CONTACT:
10/27/2021	APPROVAL DRAWINGS	Miranda.Tuck@newmill.com
2/2/2022	FIELD USE DRAWINGS	Miranda.Tuck@newmill.com

NEW MILLENNIUM
BUILDING SYSTEMS
New Millennium Building Systems, LLC
6115 County Road 42
Butler, Indiana 46721 | www.newmill.com
Phone: (260) 868-6000 | Fax: (260) 868-6001

JOB NAME	WALMART #2403-278
LOCATION	PUYALLUP, WA
CUSTOMER	WALMART
CUSTOMER P.O. NUMBER	CONTRACT
JOB NO.	W21-0027
DRAWING NO.	J2.0

B-21-0905