

# Site Plan That Show The Complete Property;

PRRASF20220839

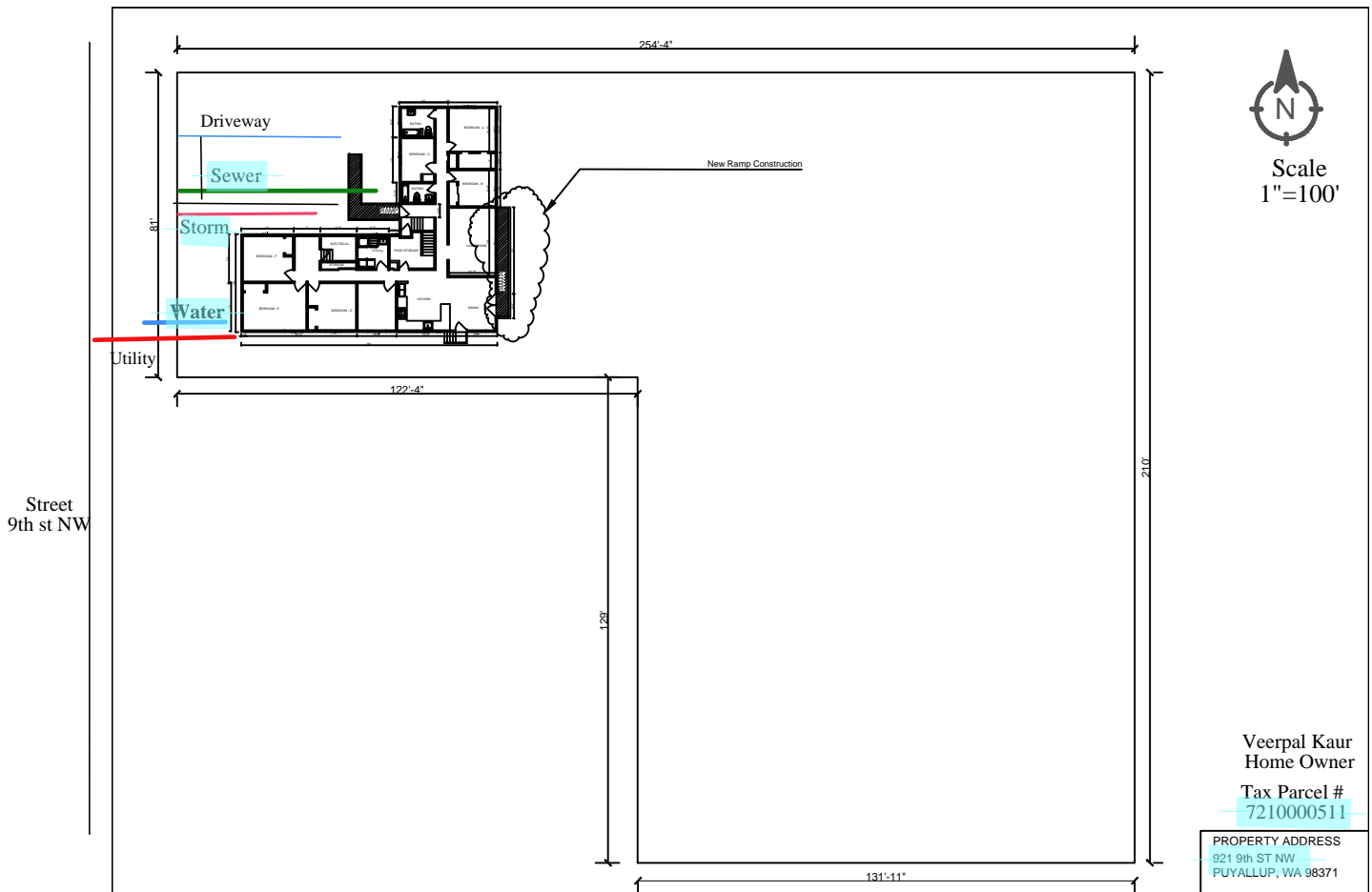
CITY OF PUYALLUP  
Planning Division Approved Site Plan  
(253) 864-4165  
MINIMUM SETBACK REQUIREMENTS

Front Yard:      Rear Yard:      +  
Interior Side Yard: Left:      Right:      +  
Street Side Yard:      N/A  
Zoning District:      RS-06  
Permit #:      PRRASF20220839

Additional Conditions/Comments  
\*Per PMC 20.20.040 (7)(d) Front  
porches, covered or uncovered, steps,  
staircases, and ADA accessibility ramps  
may project into any required yard  
setback without restriction.

Staff: NComstock  
Date: 07/18/2022

Front, rear, and side yard property lines shall be  
marked with string from surveying pins prior to footing  
inspection.



**City of Puyallup  
Development  
Engineering  
APPROVED**

See permit  
conditions.

ycharitou  
07/14/2022  
12:46:52 PM



Call Before You Dig. It's the law.  
Dial 811 or call 1-800-424-5555.

Prior to starting site work, request  
an erosion and sediment inspection  
through the CityView portal.

Refer to the City standard details  
02.03.02 & 05.02.01 for typical erosion  
and sedimentation control methods.

