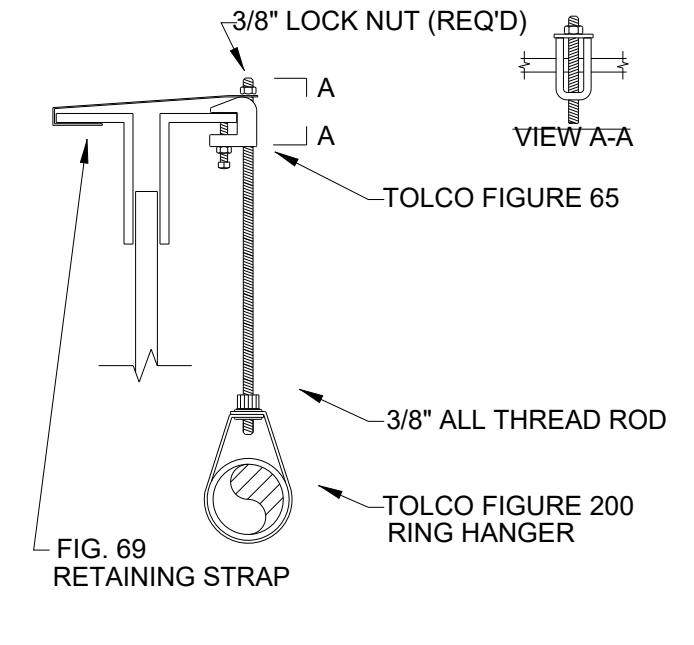
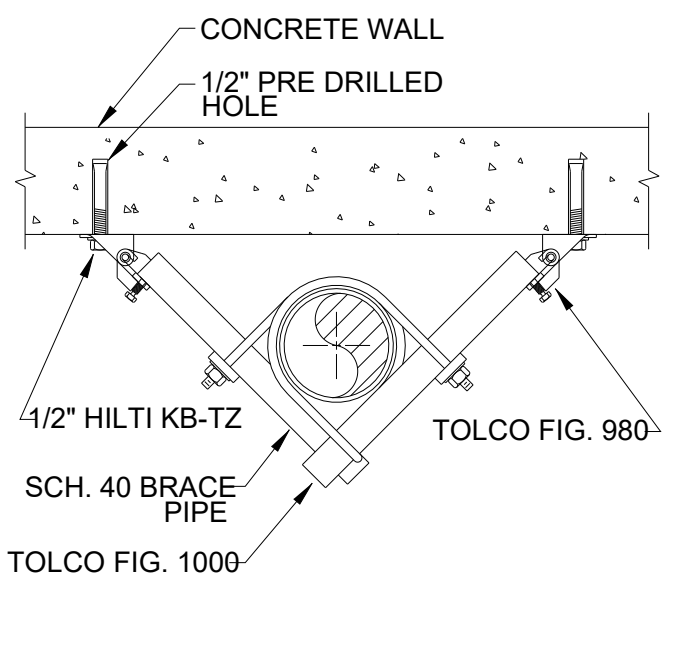


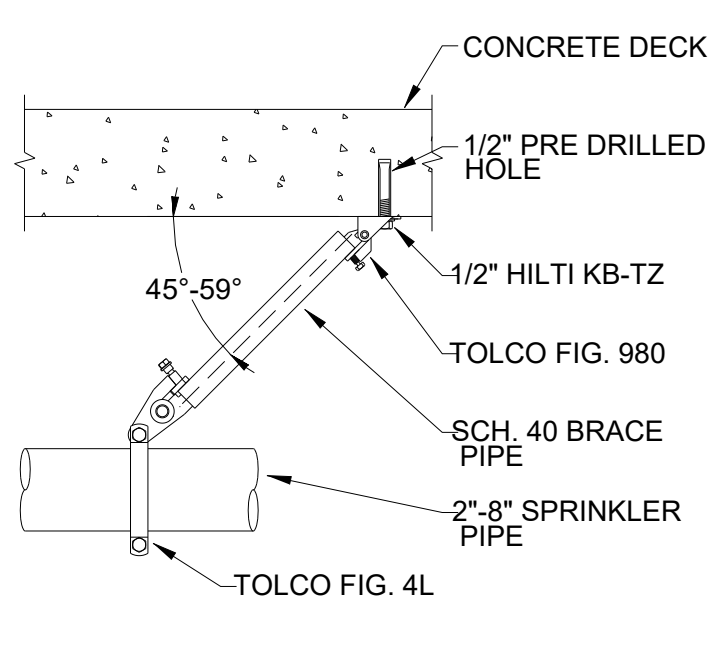
TYPICAL DROP  
NTS



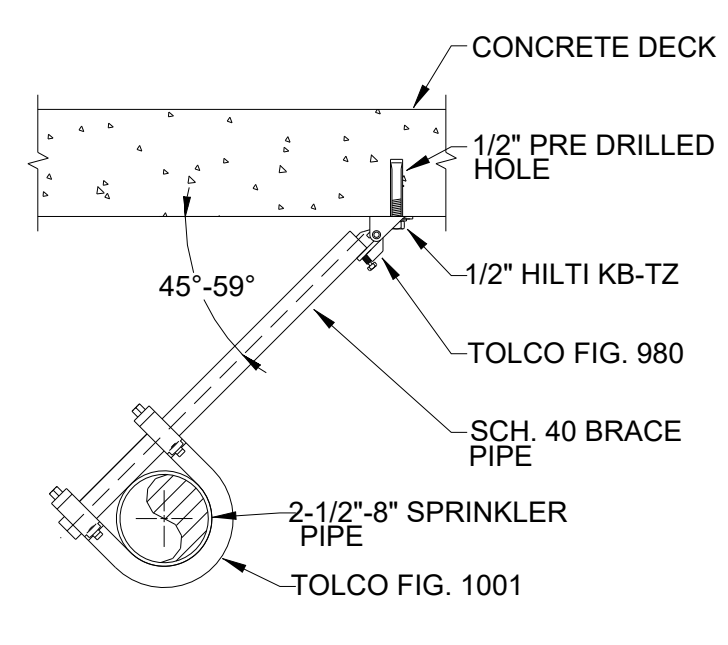
HANGER TYPE D  
NTS



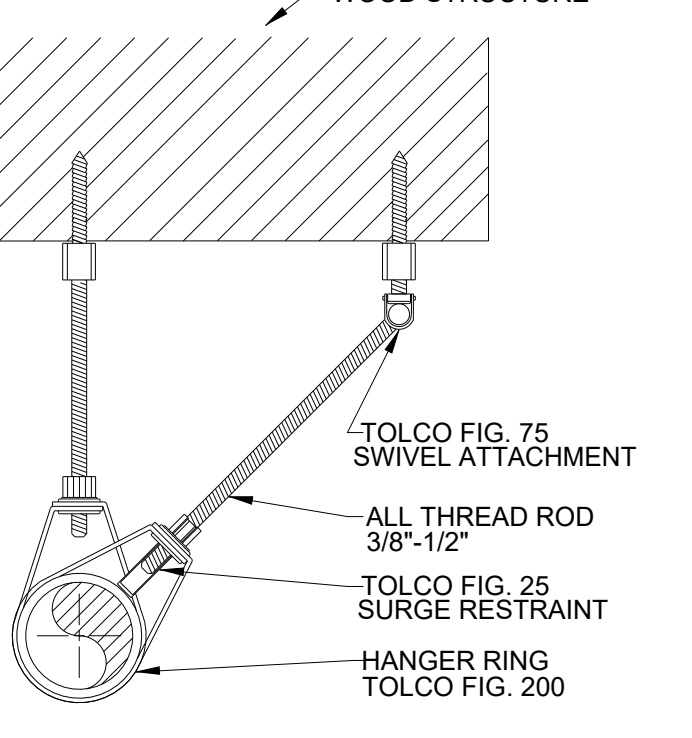
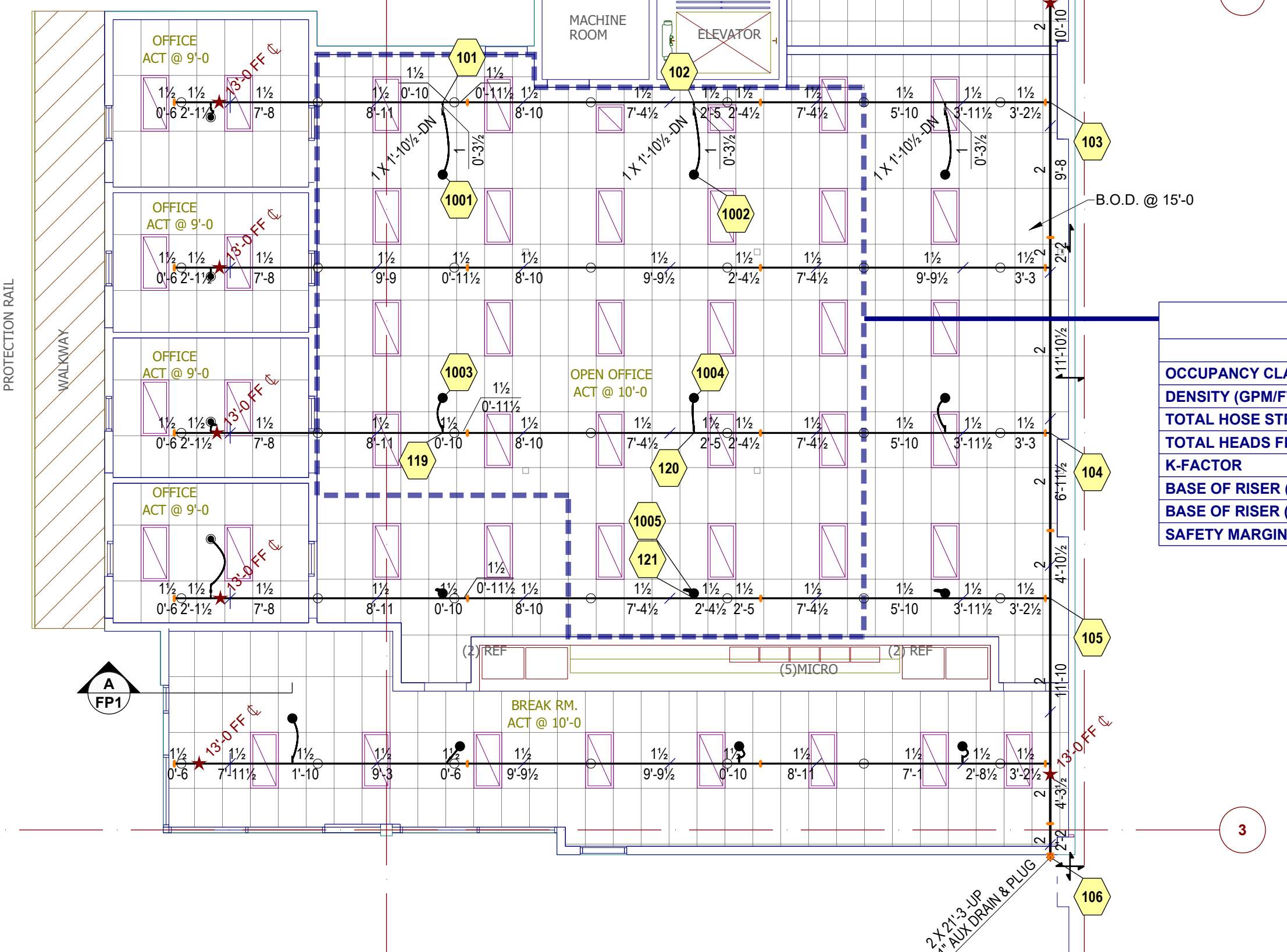
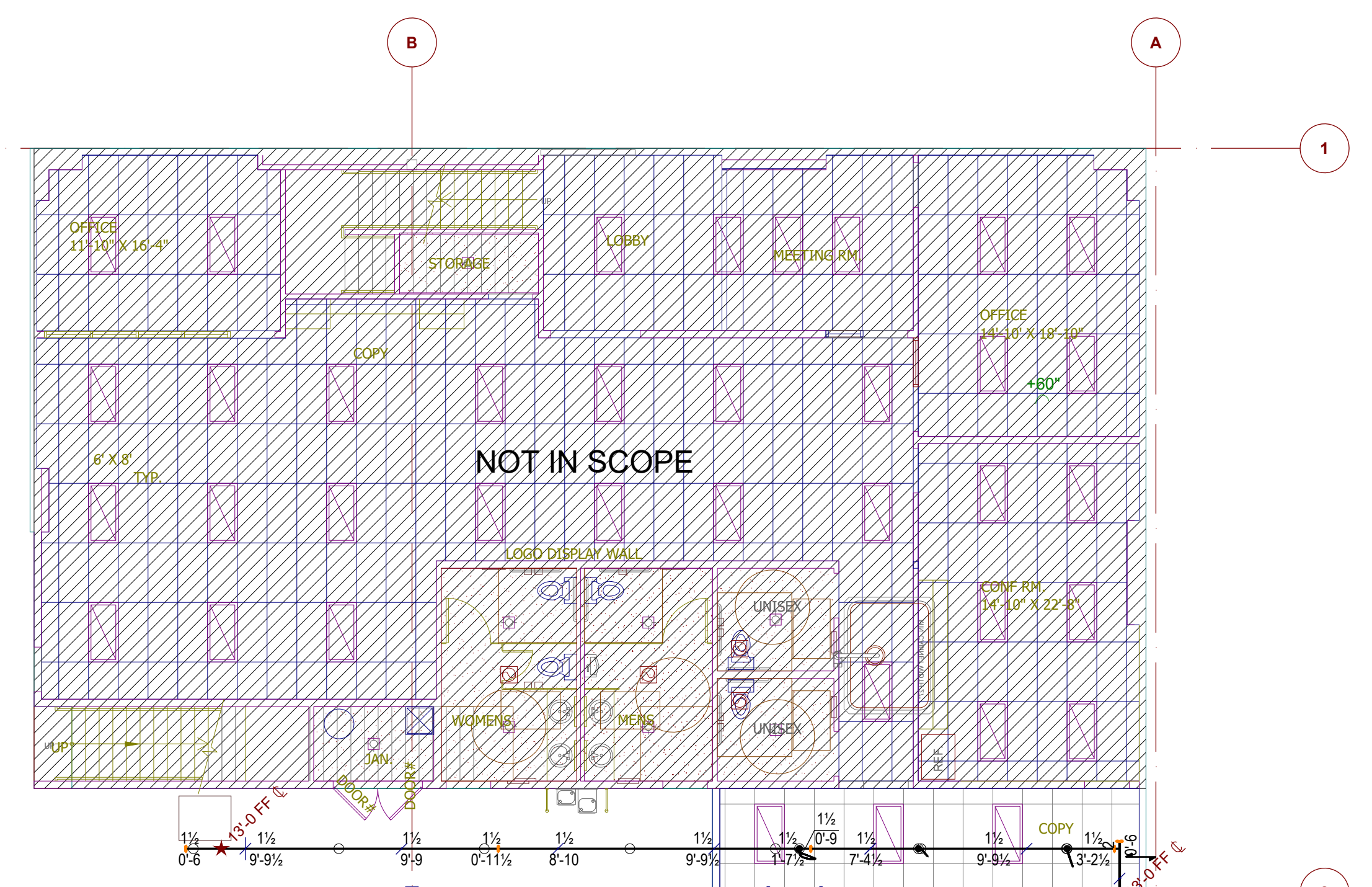
RISER BRACE  
NTS



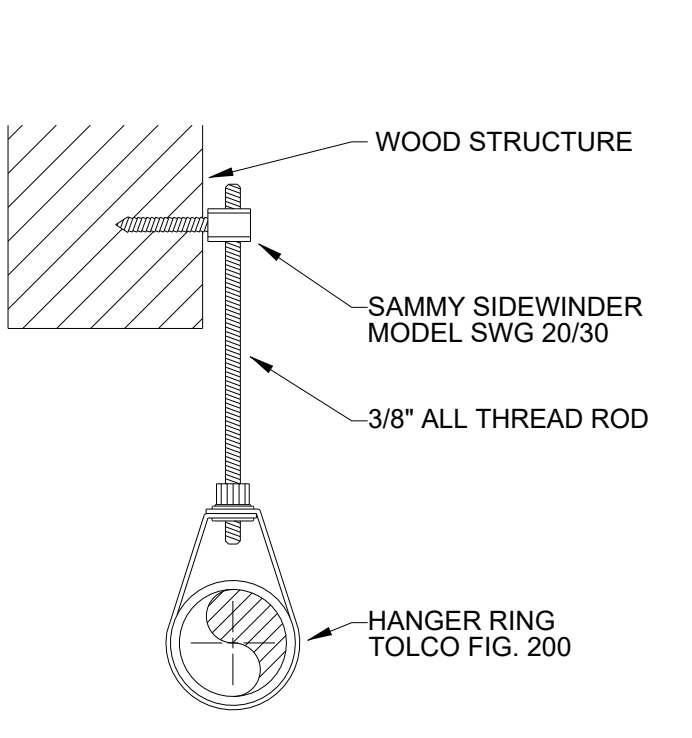
LONGITUDINAL BRACE  
NTS



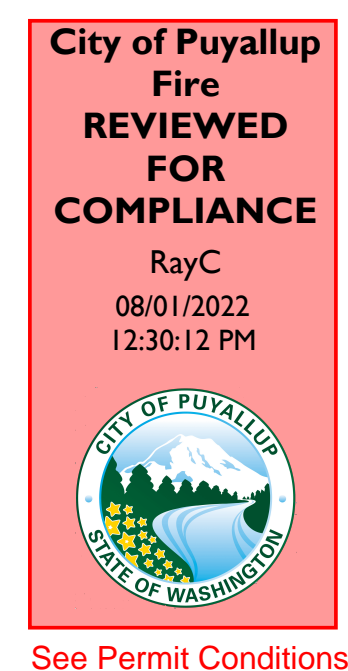
LATERAL BRACE  
NTS



E.O.L. RESTRAINT  
NTS



HANGER TYPE SW  
NTS



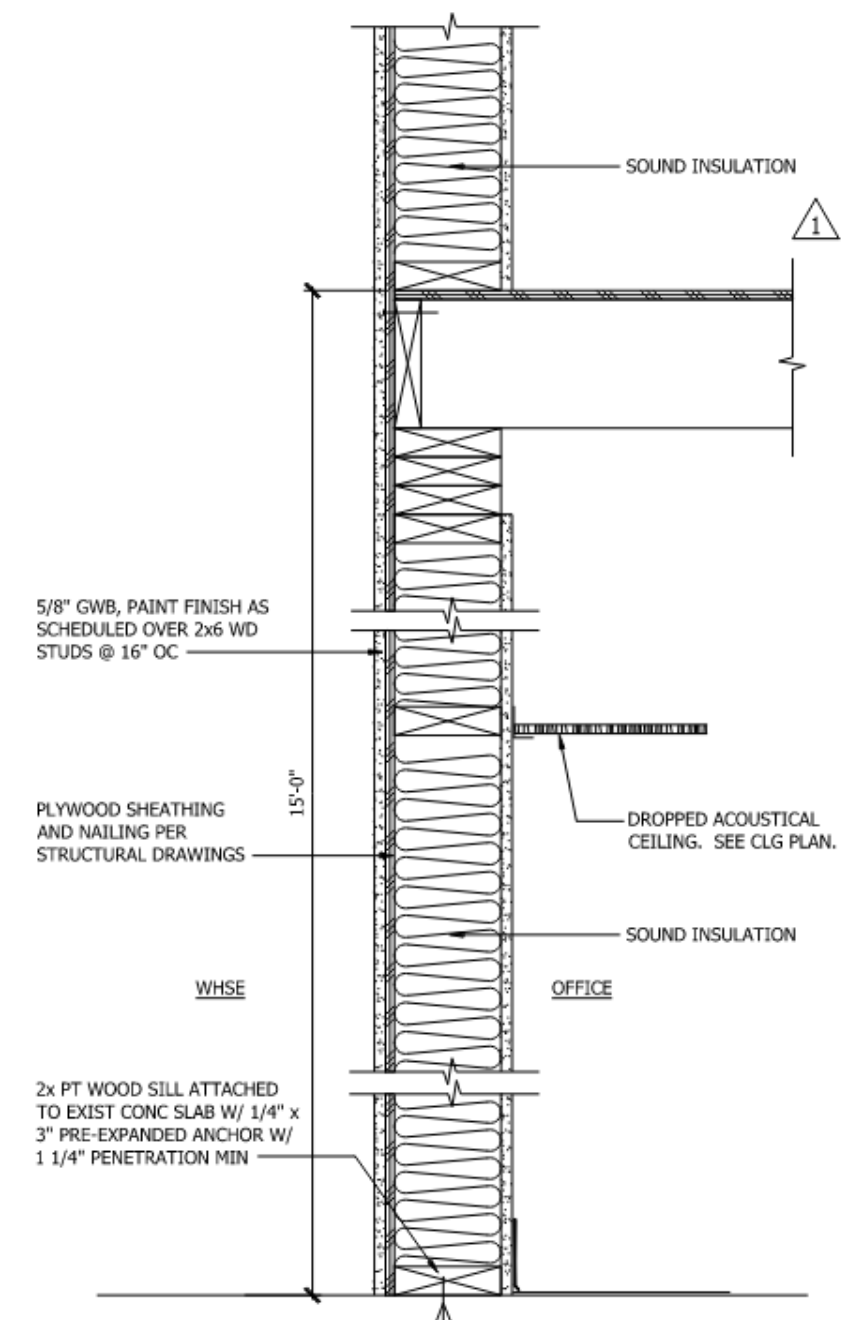
Approval of submitted plans is not an approval of omissions or oversight by this office or noncompliance with any applicable regulations of local government. The contractor is responsible for making sure that the building complies with all applicable building codes and regulations of the local government.

THE APPROVED CONSTRUCTION PLANS AND ALL ENGINEERING MUST BE POSTED ON THE JOB AT ALL INSPECTIONS IN A VISIBLE AND READILY ACCESSIBLE LOCATION.

| Hydraulic Information          |  |
|--------------------------------|--|
| Remote Area #1                 |  |
| OCCUPANCY CLASSIFICATION       | LIGHT HAZARD   |
| DENSITY (GPM/FT <sup>2</sup> ) | 0.10 FOR 1500FT <sup>2</sup> (ACTUAL 1396FT <sup>2</sup> ) |
| TOTAL HOSE STREAMS             | 100.00   |
| TOTAL HEADS FLOWING            | 5  |
| K-FACTOR                       | 11.2   |
| BASE OF RISER (GPM)            | 214.23   |
| BASE OF RISER (PSI)            | 64.151   |
| SAFETY MARGIN (PSI)            | +60.303 (48.5%)  |

City of Puyallup Development & Permitting Services ISSUED PERMIT

|             |              |
|-------------|--------------|
| Building    | Planning     |
| Engineering | Public Works |
| Fire        | Traffic      |



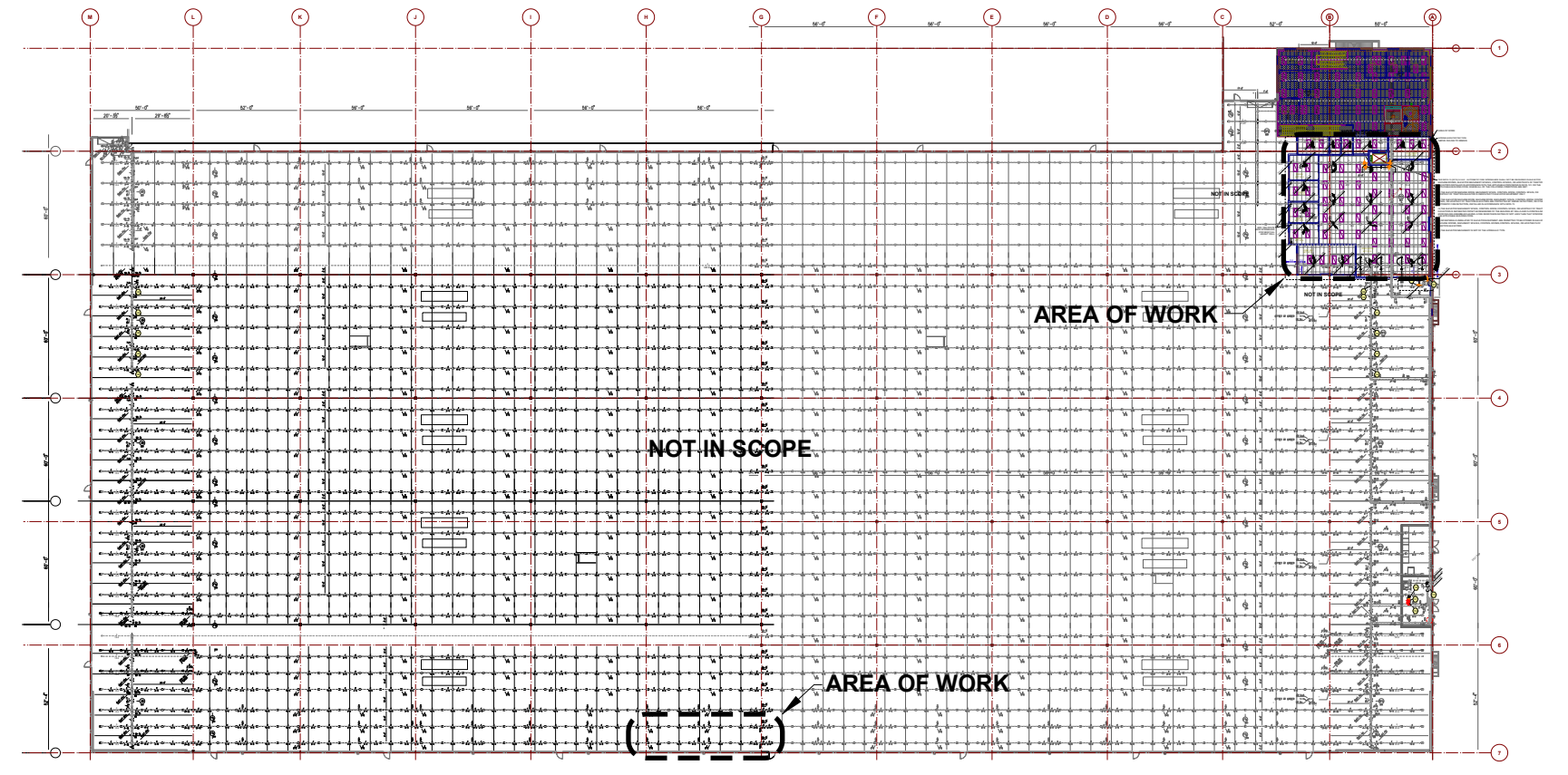
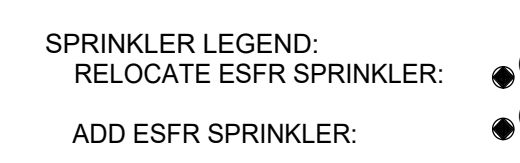
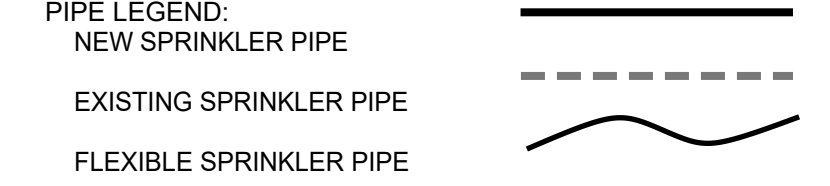
SECTION - "A"  
SCALE: NTS

SCOPE OF WORK:  
ADD AND RELOCATE SPRINKLERS AS REQUIRED FOR NEW MEZZANINE ADDITION

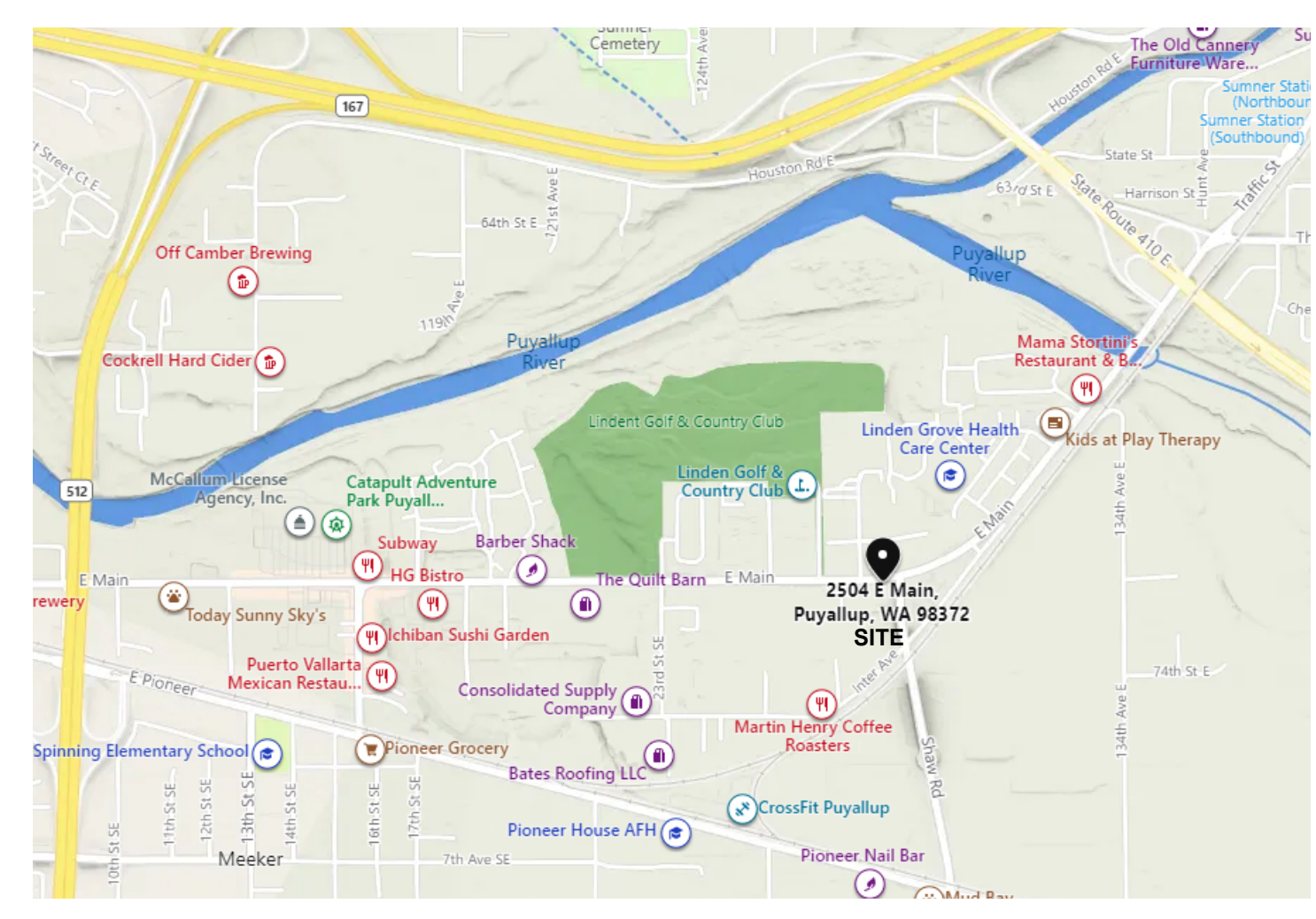
- GENERAL NOTES:
- ALL MATERIAL AND EQUIPMENT TO BE NEW AND UL AND/OR FM APPROVED.
  - PIPING DIMENSIONS ARE CUT LENGTH.
  - PIPE HANGER AND METHOD OF HANGING TO BE IN ACCORDANCE WITH NFPA #13 (2019).
  - PIPING SHALL BE IN ACCORDANCE WITH NFPA #13 (2019).
  - JOINING OF PIPE AND FITTINGS, THREADED AND WELDED, SHALL BE IN ACCORDANCE WITH NFPA #13 (2019).
  - OWNER TO PROVIDE ADEQUATE HEAT TO PREVENT WATER IN PIPES FROM FREEZING IN AREAS PROTECTED BY A WET PIPE SPRINKLER SYSTEM.
  - STRUCTURAL ADEQUACY OF THE BUILDING TO SUPPORT THE SPRINKLER PIPING IS THE RESPONSIBILITY OF THE OWNER AND/OR HIS STRUCTURAL REPRESENTATIVE.
  - ALL FIRE ALARMS, WIRING AND MONITORING ARE TO BE INSTALLED BY OTHERS.

- DESIGN NOTES:
- DESIGN AND SPRINKLER SPACING TO BE PER NFPA #13 (LIGHT HAZARD).
  - PLAN SUBMITTAL TO AND APPROVAL BY THE CITY OF PUYALLUP.
  - MATERIALS PER NFPA #13 STANDARDS AS SELECTED BY FSI.
  - TESTING PER NFPA #13 AND THE CITY OF PUYALLUP.

- FIELD NOTES:
- ALL NEW PIPING TO BE BLACK, SCHEDULE 40 WITH BLACK, DUCTILE IRON THREADED FITTINGS, OR BLACK, DYNA FLOW, WITH ARGCO GROOVED FITTINGS.
  - SPRINKLERS IN ACT TYPE CEILINGS TO BE INSTALLED ON 1" X 1/2" ARGCO FLEXIBLE DROPS.
  - ARMOVERS SUPPLYING UPRIGHTS LONGER THAN 1'-0" SHALL HAVE A HANGER.
  - ARMOVERS SUPPLYING PENDANTS LONGER THAN 1'-0" SHALL HAVE A HANGER.
  - TYPICAL HANGER TO BE A SAMMY SWG-20 (UNLESS NOTED OTHERWISE).
  - MAX SQ FT PER STANDARD SPRAY PENDANT SPRINKLER = 225 SQ FT.
  - MAX SQ FT PER EXTENDED COVERAGE PENDANT SPRINKLER = 400 SQ FT (20'-0" X 20'-0").
  - MAX SQ FT PER UPRIGHT SPRINKLER ABOVE GRID = 130 SQ FT.



KEY PLAN  
SCALE: NTS



VICINITY MAP  
SCALE: NTS



WA CL# FSI#988RJ  
1524 45TH STREET EAST, SUITE 102  
SUMNER, WA 98390  
WWW.FIRESPRINKERSINC.COM

|              |          |
|--------------|----------|
| DRAWN BY:    | CCS      |
| REVIEWED BY: | JNZ      |
| DATE:        | 07/11/22 |
| SCALE:       | AS NOTED |
| AHJ:         | PUYALLUP |

| REV# | DATE | DESCRIPTION |
|------|------|-------------|
|      |      |             |

HYDRAULIC DESIGN INFO

|              |                     |
|--------------|---------------------|
| STATIC:      | 125 PSI (PUMP ONLY) |
| RESIDUAL:    | 105 PSI (PUMP ONLY) |
| GPM FLOWING: | 1,500 GPM (PUMP)    |
| DATE & TIME: |                     |

| SYM | MFR.     | TYPE   | RESP | K    | TEMP | FINISH | ESC | QTY | SPRINKLER LEGEND |    |    |    |
|-----|----------|--------|------|------|------|--------|-----|-----|------------------|----|----|----|
|     |          |        |      |      |      |        |     |     | BR               | WH | BR |    |
| ●   | VIKING   | VK636  | QR   | 11.2 | 165  | 3/4"   | BR  | 27  | 27               | 32 | 42 | 13 |
| ●   | VIKING   | VK4621 | QR   | 5.6  | 155  | 3/4"   | BR  | 32  | 32               | 42 | 42 | 13 |
| ●   | VIKING   | VK3001 | QR   | 5.6  | 155  | 3/4"   | BR  | 42  | 42               | 42 | 42 | 13 |
| ●   | RELIABLE | JL-17  | FR   | 16.8 | 165  | 3/4"   | BR  | 13  | 13               | 13 | 13 | 13 |

RED DOT OFFICE TI  
2504 EAST MAIN AVE  
PUYALLUP, WA 98372

CONTRACT WITH:  
POE CONSTRUCTION  
1519 WEST VALLEY HWY N.  
PUYALLUP, WA 98001  
PM:CLAY JOHNSON - 206-406-3422

HANGER LEGEND:

|   |                            |
|---|----------------------------|
| — | CPVC HANGER                |
| — | TOP BEAM CLAMP W/ STRAP    |
| — | HILTI KWIK HUS-EZ          |
| — | SAMMY SUPER SCREW (SS2030) |
| — | SAMMY SIDEWINDER (SWG-20)  |
| — | TRAPZEE                    |

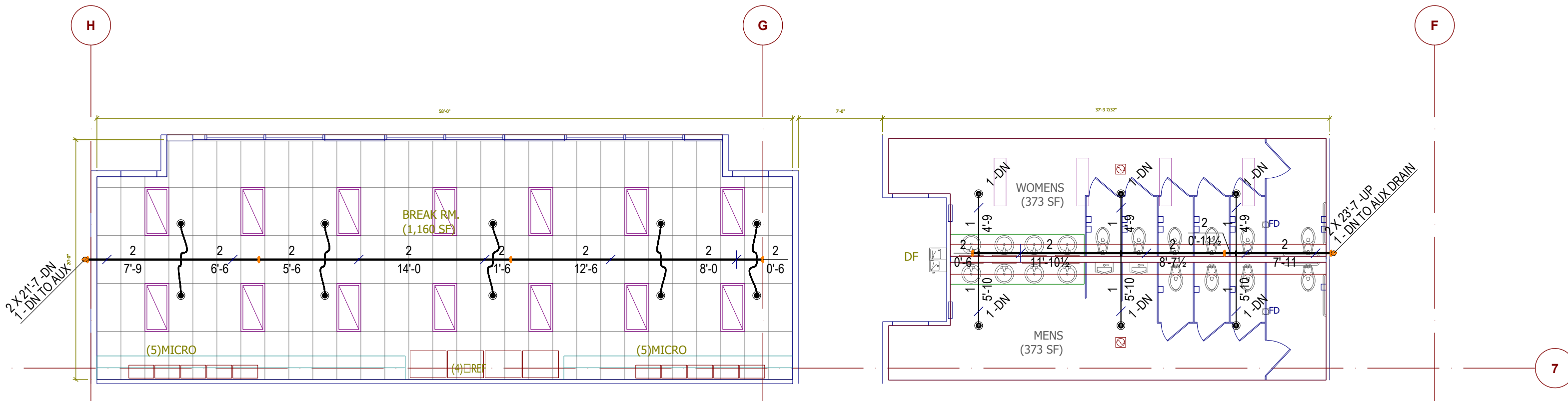
DRAWING SYMBOLS:

|   |                           |     |                            |
|---|---------------------------|-----|----------------------------|
| — | FLEXIBLE GROOVED COUPLING | A.1 | WELDED PIPE TAG            |
| — | RIGID GROOVED COUPLING    | #1  | BRANCHLINE NUMBER          |
| — | PIPE HANGER (SEE CHART)   | 1/0 | PIPE SIZE & LENGTH CUT     |
| — | END OF LINE RESTRAINT     | X   | HYDRAULIC NODE TAG         |
| — | SEISMIC BRACE             | ★   | 10'-0"FF & ELEVATION DATUM |

JOB NUMBER: 4699  
SHEET NUMBER: FP1 of 3

UNDER MEZZANINE ADDITION - PIPING PLAN  
SCALE: 1/8" = 1'-0"





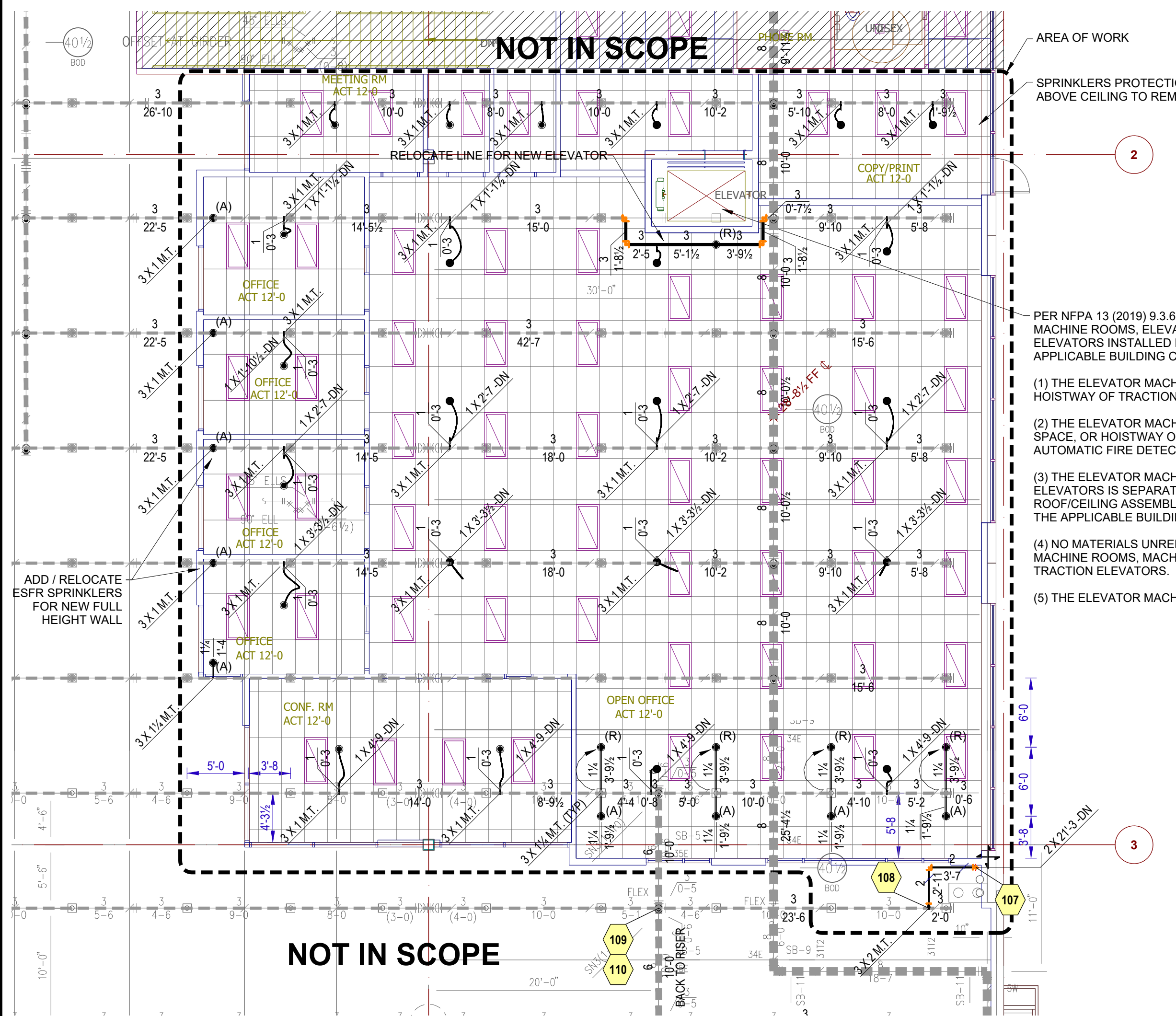
**BREAK AREA AND RESTROOM - PIPING PLAN**

SCALE: 1/8" = 1'-0"



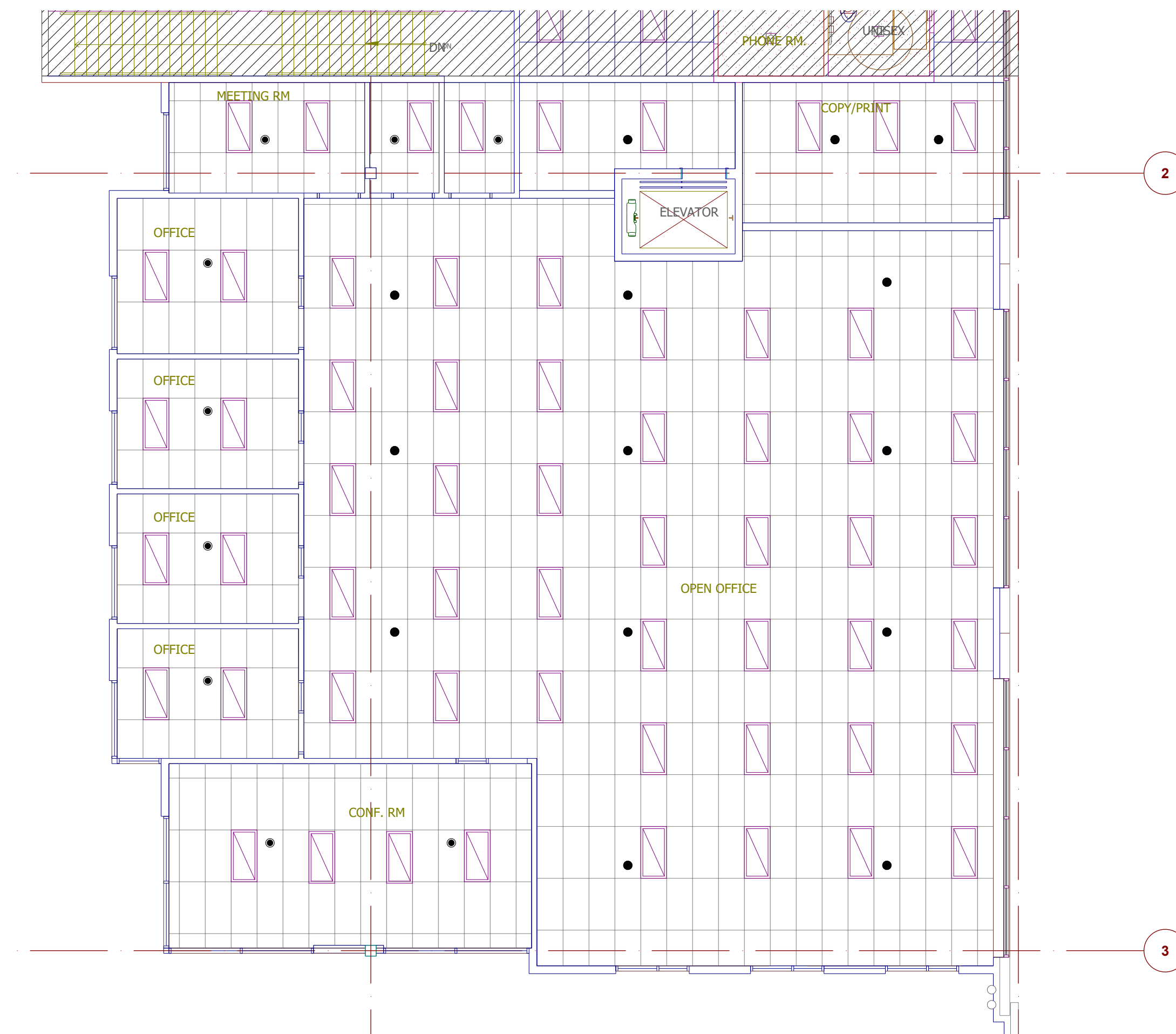
**UNDER MEZZANINE ADDITION - REFLECTED CEILING PLAN**

SCALE: 1/8" = 1'-0"



**UPPER MEZZANINE ADDITION - PIPING PLAN**

SCALE: 1/8" = 1'-0"



**UPPER MEZZANINE ADDITION - REFLECTED CEILING PLAN**

SCALE: 1/8" = 1'-0"

City of Puyallup  
Development & Permitting Services  
**ISSUED PERMIT**

|             |              |
|-------------|--------------|
| Building    | Planning     |
| Engineering | Public Works |
| Fire        | Traffic      |

WA CL# FRESI-988RJ  
1524 45TH STREET EAST, SUITE 102  
SUMNER, WA 98390  
WWW.FIRESPRINKERSINC.COM

**DRAWN BY:** CCS  
**REVIEWED BY:** JNZ  
**DATE:** 07/11/22  
**SCALE:** AS NOTED  
**AHJ:** PUYALLUP

**REVISIONS:**

| REV# | DATE | BY | DESCRIPTION |
|------|------|----|-------------|
|      |      |    |             |

**HYDRAULIC DESIGN INFO**  
 THIS SYSTEM IS HYDRAULICALLY DESIGNED  
 THIS SYSTEM IS NOT HYDRAULICALLY DESIGNED  
 - FLOW TEST  
**STATIC:** 125 PSI (PUMP ONLY)  
**RESIDUAL:** 105 PSI (PUMP ONLY)  
**GPM FLOWING:** 1,500 GPM (PUMP)  
**DATE & TIME:**

**SPRINKLER LEGEND**

| SYM | MFR.     | SIN    | RESP | TYPE     | K    | TEMP | FINISH | ESC | QTY |
|-----|----------|--------|------|----------|------|------|--------|-----|-----|
| ●   | VIKING   | VK636  | QR   | ECP      | 11.2 | 155  | 1/2"   | BR  | 14  |
| ●   | VIKING   | VK4621 | QR   | SSP      | 5.6  | 155  | 1/2"   | BR  | 25  |
| ●   | VIKING   | VK9001 | QR   | SSU      | 5.6  | 155  | 1/2"   | BR  | 13  |
| ●   | RELIABLE | JL-17  | FR   | ESFR (P) | 165  | 170  | 1/2"   | BR  | 13  |

TOTAL THIS PAGE = 52

**RED DOT OFFICE TI**  
2504 EAST MAIN AVE  
PUYALLUP, WA 98372

**CONTRACT WITH:**  
**POE CONSTRUCTION**  
1519 WEST VALLEY HWY N.  
PUYALLUP, WA 98001  
PM: CLAY JOHNSON - 206-406-3422

**HANGER LEGEND:**

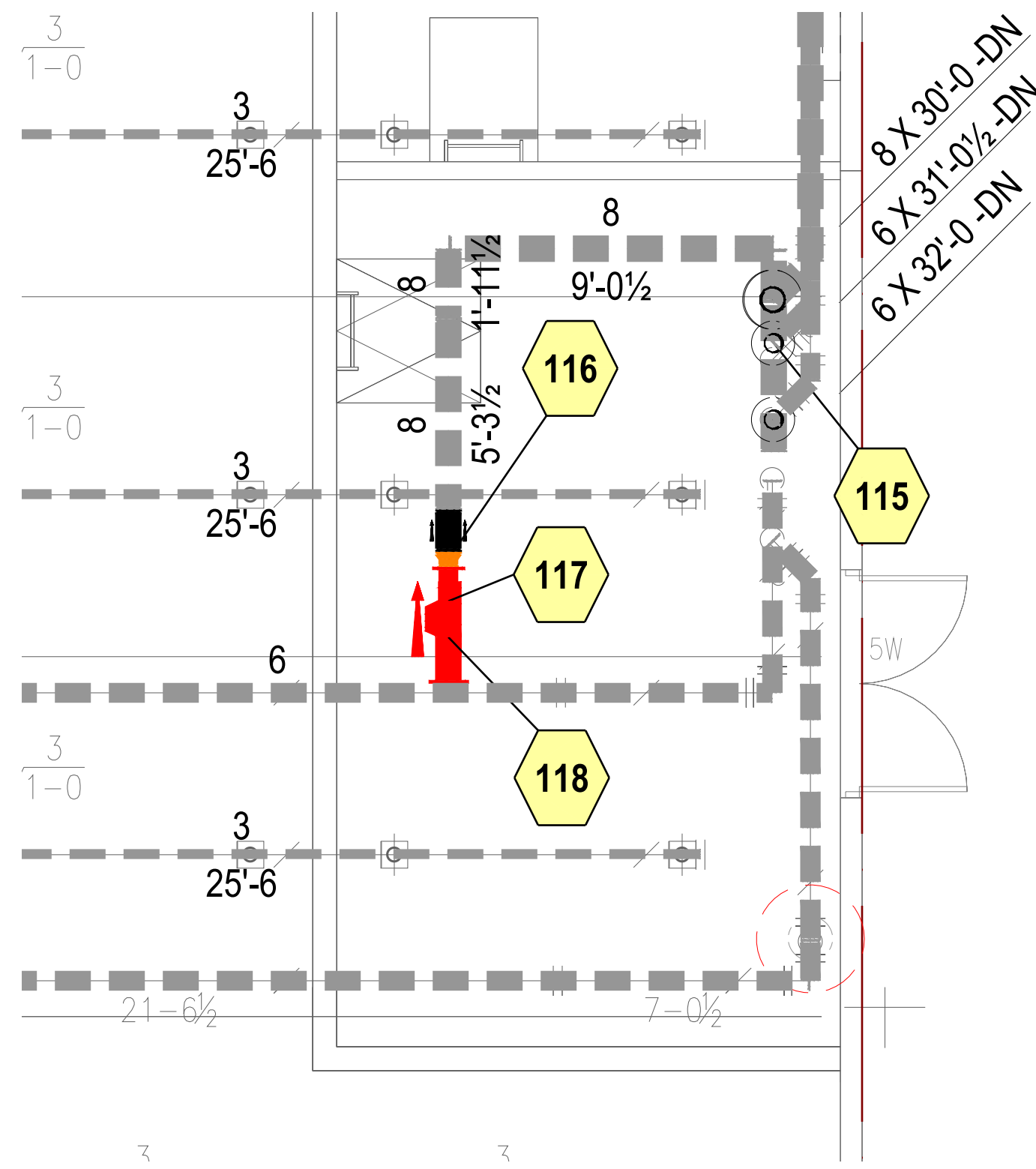
|                             |
|-----------------------------|
| CPVC HANGER                 |
| TOP BEAM CLAMP W/ STRAP     |
| HILTI KWIK HUS-E2           |
| SAMMY SUPER SCREW (SST2000) |
| SAMMY SIDEWINDER (SWG-20)   |
| TRAPPIZE                    |

**DRAWING SYMBOLS:**

|   |                                |
|---|--------------------------------|
| + | A.1                            |
| + | #1                             |
| — | 1/2"                           |
| — | X                              |
| + | ★ 10'-10" FF & ELEVATION DATUM |

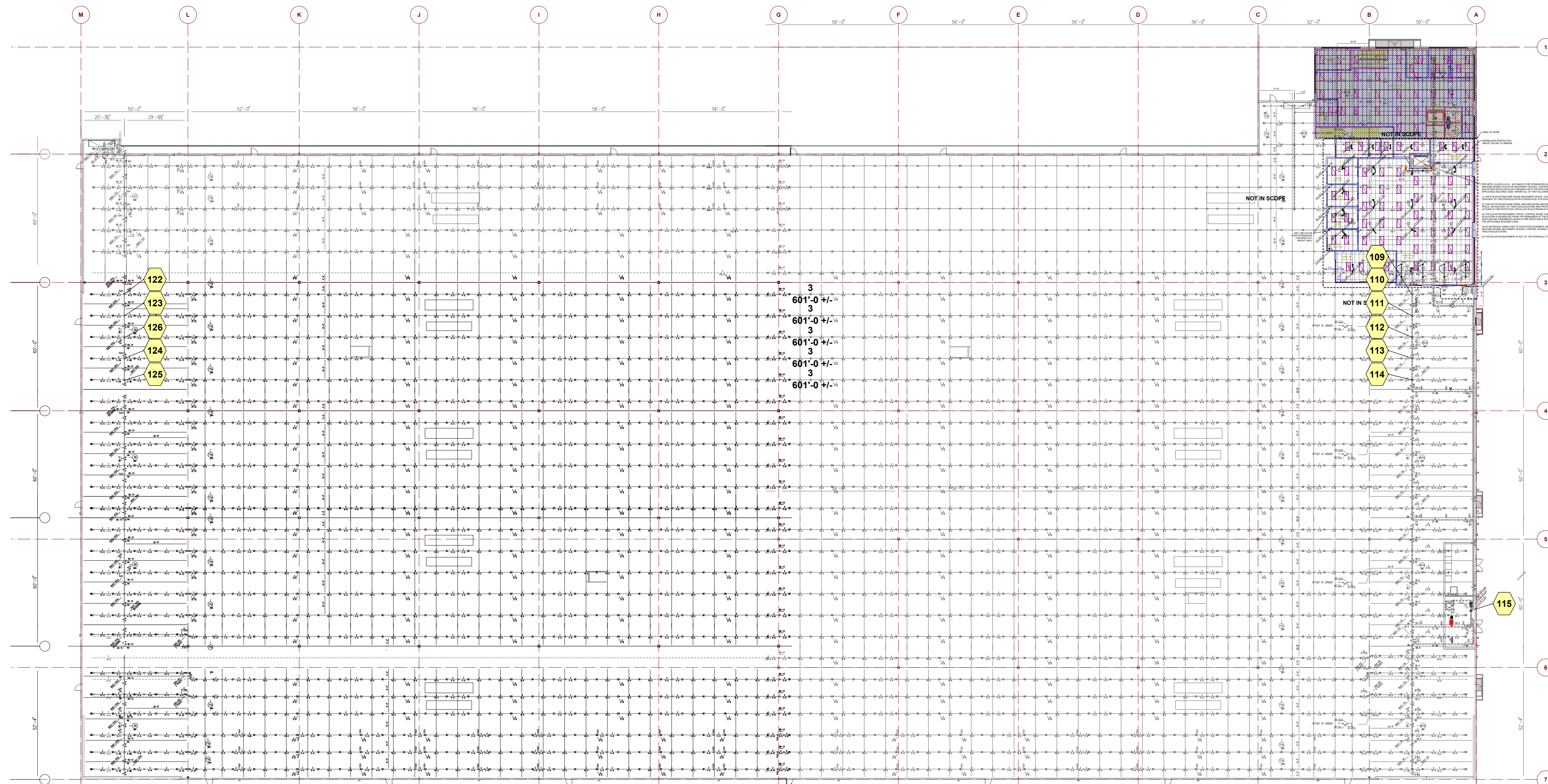
**JOB NUMBER:** 4699  
**SHEET NUMBER:** FP2 of 3





**EXISTING PUMP ROOM - PIPING PLAN**

SCALE: 1/4" = 1'-0"



**EXISTING OVERHEAD - PIPING PLAN**

SCALE: 3/32" = 1'-0"



WA CL# FRESI-988RJ  
 1524 45TH STREET EAST,  
 SUITE 102  
 SUMNER, WA 98390  
 WWW.FIRESPRINKLERSINC.COM

DRAWN BY: CCS  
 REVIEWED BY: JNZ  
 DATE: 07/11/22  
 SCALE: AS NOTED  
 AHJ: PUYALLUP

**REVISIONS:**

| REV# | DATE | BY | DESCRIPTION |
|------|------|----|-------------|
|      |      |    |             |

**HYDRAULIC DESIGN INFO**

THIS SYSTEM IS HYDRAULICALLY DESIGNED  THIS SYSTEM IS NOT HYDRAULICALLY DESIGNED

- FLOW TEST

STATIC: 125 PSI (PUMP ONLY)  
 RESIDUAL: 105 PSI (PUMP ONLY)  
 GPM FLOWING: 1,500 GPM (PUMP)  
 DATE & TIME: -

**SPRINKLER LEGEND**

| SYM | MFR.     | SIN    | RESP | TYPE     | K    | TEMP | THRD | FINISH | ESC | QTY |    |
|-----|----------|--------|------|----------|------|------|------|--------|-----|-----|----|
|     |          |        |      |          |      |      |      |        |     |     | BR |
| ●   | VIKING   | VK636  | QR   | ECP      | 11.2 | 155  | 1/2" | 1/2"   | BR  | WH  |    |
| ○   | VIKING   | VK4621 | QR   | SSP      | 5.6  | 155  | 1/2" | 1/2"   | BR  | WH  |    |
| ○   | VIKING   | VK3001 | QR   | SSU      | 5.6  | 155  | 1/2" | 1/2"   | BR  | WH  |    |
| ●   | RELIABLE | JL-17  | FR   | ESFR (P) | 165  | 165  | 3/4" | 3/4"   | BR  |     |    |

**RED DOT OFFICE TI**

2504 EAST MAIN AVE  
 PUYALLUP, WA 98372

**City of Puyallup  
 Development & Permitting Services  
 ISSUED PERMIT**

|             |              |
|-------------|--------------|
| Building    | Planning     |
| Engineering | Public Works |
| Fire        | Traffic      |

**WASHINGTON STATE  
 CERTIFICATE OF COMPETENCY  
 FIRE PROTECTION SPRINKLER SYSTEMS**

Christopher Cameron Smith  
 0087-0618-C Level 3  
 Fire Sprinklers Incorporated  
 FRESI-988RJ

Signature:

Expires: 12/31/22

**CONTRACT WITH:**  
**POE CONSTRUCTION**  
 1519 WEST VALLEY HWY N.  
 PUYALLUP, WA 98001  
 PM: CLAY JOHNSON - 206-406-3422

**HANGER LEGEND:**

|                             |                                |
|-----------------------------|--------------------------------|
| CPVC HANGER                 | #1 - BRANCHLINE NUMBER         |
| TOP BEAM CLAMP W/ STRAP     | 1 - PIPE SIZE & LENGTH CUT     |
| H/LT/KWK/HUS-E2             | 1 - HYDRAULIC NODE TAG         |
| SAMMY SUPER SCREW (SST2030) | 10'-10" FF & - ELEVATION DATUM |
| SAMMY SIDEWINDER (SWG-30)   |                                |
| TRAPEZE                     |                                |

**DRAWING SYMBOLS:**

|   |                           |     |                 |
|---|---------------------------|-----|-----------------|
| + | FLEXIBLE GROOVED COUPLING | A.1 | WELDED PIPE TAG |
| - | RIGID GROOVED COUPLING    |     |                 |
| — | PIPE HANGER (SEE CHART)   |     |                 |
| — | END OF LINE RESTRAINT     |     |                 |
| + | SEISMIC BRACE             |     |                 |

JOB NUMBER: 4699  
 SHEET NUMBER: FP3 of 3