



PCR 007Puyallup
Corporate Center
E200137 June 12, 2022

City Engineering
333 S. Meridian
Puyallup, WA 98371
Tel: (253) 864-4165
Fax: (253) 840-6678

PLAN CHANGE REQUEST

DATE: 06/10/22 PERMIT NO./REF NO: E-20-0137

- 1. PROJECT: Puyallup Corporate Center ADDRESS: 4038 E Main St
- 2. OWNER: Brandon Dickens EMAIL: brandon.dickens@idilogistics.com
- 3. DESIGN ENGINEER: Zayin Wall EMAIL: zwall@barghausen.com
- 4. CONTRACTOR: Clay Johnson EMAIL: clay@poeconstruction.com

5. ORIGINATOR OF REQUEST:
 OWNER DESIGN ENGINEER CONTRACTOR CITY OF PUYALLUP

6. DOES THIS REQUEST REQUIRE A DEVIATION FROM AN EXISTING CITY STANDARD? YES NO

7. IF YES, PLEASE SUBMIT AN ALTERNATIVE METHODS FOR CONSTRUCTION MATERIALS REQUEST APPLICATION (AMR).

8. IF NO, PLEASE COMPLETE THE FOLLOWING:

9. APPROVED CIVIL PLAN SHEET NUMBERS AFFECTED: C4, C12

10. WHAT PART OF THE CITY AND/OR DEVELOPMENT INFRASTRUCTURE IS BEING AFFECTED?
[] ROAD [] STORM [] WATER [] SANITARY GRADING [] EROSION CONTROL

11. DESCRIBE THE CHANGE BEING REQUESTED: (ATTACH ADDITIONAL INFORMATION AS NECESSARY)

Parking lot layout updated based on the revised site plan associated with the Red Dot TI work.

12. ALL SIGNATURES ARE REQUIRED TO PROCESS THIS REQUEST UNLESS INITIATED BY THE CITY. FINAL APPROVAL/DENIAL WILL BE MADE BY THE CITY ENGINEER. ALL CHANGES WILL BE FULLY APPROVED/DENIED PRIOR TO ANY WORK ON REQUESTED CHANGES. ANY WORK COMPLETED PRIOR TO APPROVAL IS AT THE RISK OF THE DEVELOPER/CONTRACTOR AND MAY NOT BE APPROVED BY THE CITY ENGINEER.

Charles Macphree
OWNER

Zayin Wall
DESIGN ENGINEER

Clay Johnson
CONTRACTOR

CITY INSPECTOR

CITY REVIEWER

APPROVED / **DENIED**

6/27/2022

DATE

GRADING AND DRAINAGE PLAN

FOR PUYALLUP CORPORATE PARK

A PORTION OF THE NE¹/₄ OF THE SW¹/₄ OF SEC. 26, TWP. 20 NORTH, RGE. 4 EAST, W.M.
CITY OF PUYALLUP, PIERCE COUNTY, WASHINGTON

PCR
007Puyallup
Corporate
Center
E200137June
12, 2022



Know what's below.
Call before you dig.

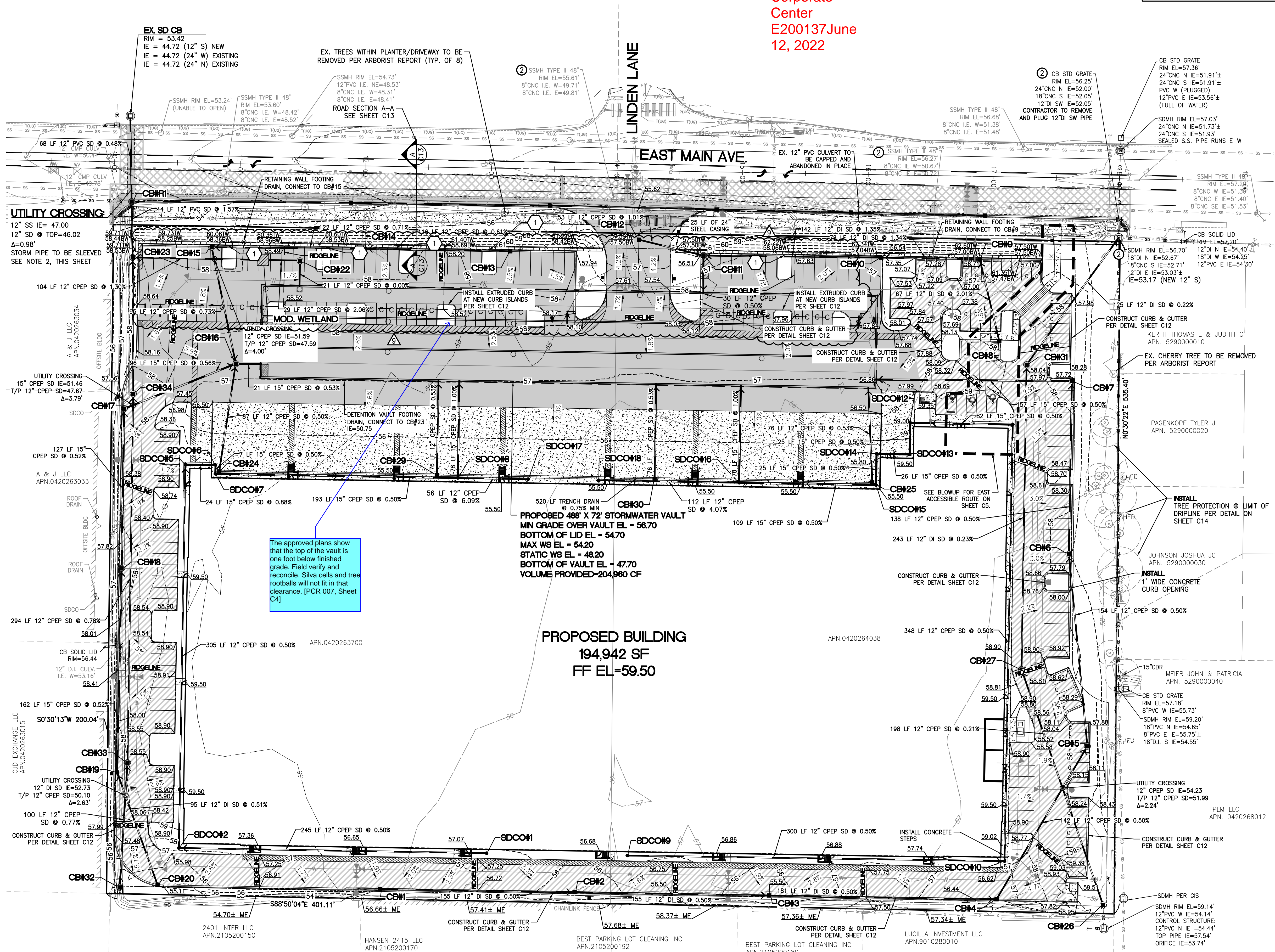
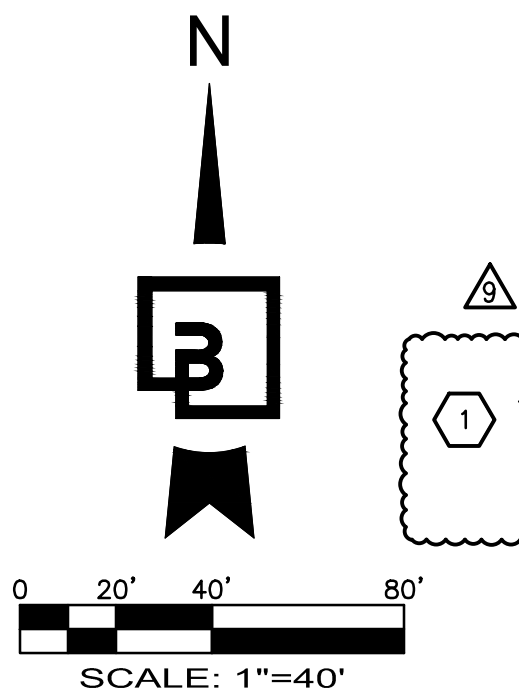
KEYNOTES
1. CONTRACTOR TO MAINTAIN A 1" CONCRETE GUTTER PAN ALONG NORTH SIDE OF NEW PLANTER ISLANDS

- LEGEND:**
- SOLID HINGE LID PER CITY OF PUYALLUP STD. 06.01.02. (SHEET C11)
 - MANHOLES WITHIN DISTURBED AREAS SHALL HAVE RINGS AND LIDS REPLACED WITH THE CURRENT STANDARD INSTALLATION.

- NOTE:**
- ALL SPOT ELEVATIONS ADJACENT CURB REPRESENT TOP OF ASPHALT. CURB TO BE 6-INCH IN HEIGHT UNLESS OTHERWISE SPECIFIED.
 - PIPE SLEEVE SHALL BE A SINGLE SECTION OF PVC PIPE (NO JOINTS) WITH A MINIMUM LENGTH OF 10-FOOT TO THE NORTH AND MAXIMUM PRACTICAL LENGTH TO THE SOUTH. THE PIPE SLEEVE SHALL BE PLACED AROUND THE STORMWATER PIPE WITH THE ANNULAR SPACE BETWEEN THE SLEEVE AND THE STORMWATER PIPE FILLED WITH GROUT.

LEGEND

- NEW LIGHT DUTY ASPHALT AND BASE
- NEW HEAVY DUTY ASPHALT AND BASE
- CONCRETE AND BASE
- PROPOSED CONTOUR
- EXISTING CONTOUR
- PROPOSED GRADING SLOPE
- SPOT ELEVATION
- MATCH EXISTING ELEVATION
- TW=PROPOSED GRADE AT THE TOP OF WALL
- BW=PROPOSED GRADE AT THE BOTTOM OF WALL
- STORM DRAINAGE CATCH BASIN, TYPE 2-48" W/ STANDARD GRATE
- STORM DRAINAGE CATCH BASIN, TYPE 1 W/ STANDARD GRATE
- 92.25
- 92.47± ME
- 92.25TW
- 92.25BW



CATCH BASINS	CATCH BASINS	CATCH BASINS
CB#1 TYPE 1, W/STANDARD GRATE RIM=55.99 IE=53.95 (12" E)	CB#20 TYPE 1, W/STANDARD GRATE RIM=55.41 IE=53.49 (12" N)	EX. SD CB TYPE 1, W/STANDARD GRATE RIM=53.42 IE=44.72 (12" S) IE=44.72 (24" W) IE=44.72 (24" N)
CB#2 TYPE 1, W/STANDARD GRATE RIM=55.55 IE=53.18 (12" W) IE=53.18 (12" E)	CB#22 TYPE 2, 48" W/SOLID HINGE LID & FLOW CONTROL RISER RIM=58.29 IE=48.20 (12" S) IE=48.20 (12" W)	MOD. WETLAND RIM=58.24 IE=47.60 (12" E) IE=47.10 (12" W)
CB#3 TYPE 1, W/STANDARD GRATE RIM=55.56 IE=52.41 (12" W) IE=52.41 (12" E)	CB#23 TYPE 1, W/STANDARD GRATE RIM=59.05 IE=45.75 (12" E) IE=45.75 (12" S) IE=45.75 (12" N)	SDCO#1 RIM=57.28 IE=54.37 (12" W)
CB#4 TYPE 1, W/STANDARD GRATE RIM=56.25 IE=51.51 (12" W) IE=51.51 (12" NE)	CB#24 TYPE 1, W/STANDARD GRATE RIM=55.40 IE=51.40 (12" N)	SDCO#2 RIM=57.34 IE=53.14 (12" E)
CB#5 TYPE 2, 48" W/STANDARD GRATE RIM=57.72 IE=50.81 (12" SW) IE=50.81 (12" N)	CB#25 TYPE 1, W/STANDARD GRATE RIM=55.40 IE=51.40 (12" N)	SDCO#5 RIM=59.44 IE=51.62 (12" S) IE=50.90 (15" E)
CB#6 TYPE 2, 48" W/STANDARD GRATE RIM=57.55 IE=50.04 (12" S) IE=50.04 (12" N)	CB#26 TYPE 2, 48" W/BIRD CAGE RIM=59.23 IE=54.44 (12" N)	SDCO#6 RIM=55.50 IE=50.69 (15" W) IE=50.69 (15" S)
CB#7 TYPE 2, 48" W/STANDARD GRATE RIM=57.74 IE=49.35 (12" S) IE=49.35 (15" W)	CB#27 TYPE 2, 48" W/SOLID HINGE LID RIM=58.89 IE=54.02 (12" S) IE=54.02 (12" N)	SDCO#7 RIM=55.44 IE=49.69 (15" W) IE=49.03 (12" E) IE=49.69 (15" N)
CB#8 TYPE 1, W/STANDARD GRATE RIM=57.88 IE=55.75 (12" N)	CB#28 TYPE 1, W/STANDARD GRATE RIM=55.40 IE=51.40 (12" N)	SDCO#8 RIM=55.44 IE=49.69 (15" W) IE=49.03 (12" E) IE=49.69 (15" N)
CB#9 TYPE 1, W/STANDARD GRATE RIM=56.53 IE=54.40 (12" S) IE=54.40 (12" W)	CB#29 TYPE 1, W/STANDARD GRATE RIM=55.40 IE=51.40 (12" N)	SDCO#9 RIM=56.77 IE=53.70 (12" E)
CB#10 TYPE 1, W/STANDARD GRATE RIM=56.59 IE=53.35 (12" E) IE=53.35 (12" W)	CB#30 TYPE 1, W/STANDARD GRATE RIM=55.40 IE=51.40 (12" N)	SDCO#10 RIM=57.39 IE=52.19 (12" W) IE=52.19 (12" N)
CB#11 TYPE 2, 48" W/STANDARD GRATE RIM=58.11 IE=51.44 (12" E) IE=51.44 (12" W)	CB#31 TYPE 2, 48" W/SOLID HINGE LID RIM=57.39 IE=53.45 (12" NE) IE=53.45 (12" NE)	SDCO#11 RIM=59.35 IE=50.44 (12" S) IE=50.44 (15" W)
CB#12 TYPE 1, W/STANDARD GRATE RIM=56.08 IE=51.98 (12" E)	CB#32 TYPE 2, 48" W/ BIRD CAGE RIM=53.68 IE=49.66 (12" N)	SDCO#12 RIM=58.81 IE=50.03 (15" E) IE=50.03 (15" S)
CB#13 TYPE 1, W/STANDARD GRATE RIM=57.23 IE=53.23 (12" W)	CB#33 TYPE 2, 48" W/SOLID HINGE LID RIM=57.97 IE=48.89 (12" S) IE=48.89 (12" N)	SDCO#13 RIM=59.46 IE=49.91 (15" N) IE=49.91 (15" W)
CB#14 TYPE 1, W/STANDARD GRATE RIM=57.45 IE=52.52 (12" E) IE=52.52 (12" W)	CB#34 TYPE 1, W/STANDARD GRATE RIM=57.65 IE=51.66 (12" S) IE=51.66 (12" S)	SDCO#14 RIM=55.86 IE=49.77 (15" E) IE=49.77 (15" S)
CB#15 TYPE 2, 48" W/STANDARD GRATE RIM=57.65 IE=51.66 (12" E) IE=51.66 (12" S)	CB#35 TYPE 1, W/STANDARD GRATE RIM=57.65 IE=51.66 (12" S) IE=51.66 (12" S)	SDCO#15 RIM=55.44 IE=48.65 (15" N) IE=48.65 (15" W)
CB#16 TYPE 2, 48" W/SOLID HINGE LID RIM=57.33 IE=45.05 (12" N)	CB#36 TYPE 1, W/STANDARD GRATE RIM=57.62 IE=51.66 (12" E) IE=51.66 (12" S)	SDCO#16 RIM=55.44 IE=49.10 (15" E) IE=47.88 (12" W) IE=49.10 (15" N)
CB#17 TYPE 2, 48" W/STANDARD GRATE RIM=57.35 IE=51.51 (15" S) IE=51.51 (15" E)	CB#37 TYPE 1, W/STANDARD GRATE RIM=57.62 IE=51.66 (12" E) IE=51.66 (12" S)	SDCO#17 RIM=55.44 IE=51.59 (12" W) IE=51.59 (12" W)
CB#18 TYPE 2, 48" W/STANDARD GRATE RIM=57.66 IE=52.17 (15" S) IE=52.17 (15" N)	CB#38 TYPE 1, W/STANDARD GRATE RIM=57.62 IE=51.66 (12" E) IE=51.66 (12" S)	SDCO#18 RIM=55.44 IE=52.22 (12" E) IE=52.25 (12" W)
CB#19 TYPE 1, W/STANDARD GRATE RIM=57.62 IE=53.01 (12" S) IE=53.01 (15" N)	CB#39 TYPE 1, W/STANDARD GRATE RIM=57.62 IE=51.66 (12" E) IE=51.66 (12" S)	SDCO#19 RIM=55.44 IE=52.25 (12" W)

APPROVED

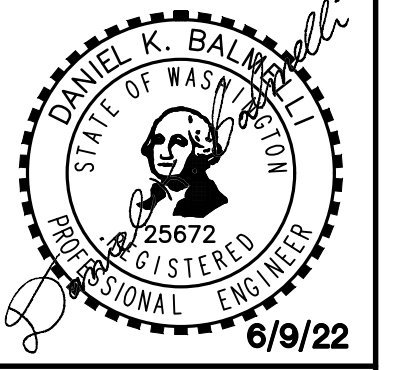
BY: CITY OF PUYALLUP
ENGINEERING SERVICES

DATE:

NOTE:
THIS APPROVAL IS VOID AFTER 1 YEAR FROM APPROVAL DATE. THE CITY WILL NOT BE RESPONSIBLE FOR ERRORS AND/OR OMISSIONS ON THESE PLANS. FIELD CONDITIONS MAY DICTATE CHANGES TO THESE PLANS AS DETERMINED BY THE ENGINEERING SERVICES MANAGER.

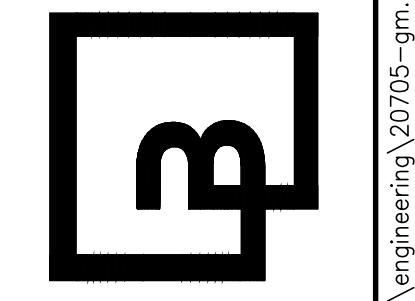
GRADING AND DRAINAGE PLAN
FOR
PUYALLUP CORPORATE PARK

FOR:
PANATTONI DEVELOPMENT CO.
900 SW 16TH STREET, SUITE 330
RENTON, WA 98057



Scale:
Horizontal 1"=40'
Vertical 1"=10'

Barghausen
Consulting Engineers, Inc.
18215 72nd Avenue South
Kent, WA 98032
425.251.6222
barghausen.com



Job Number: 20705
Sheet: C4 of 23

PCR
007Puyallup
Corporate
Center
E200137June
12, 2022



CONSTRUCTION NOTES AND DETAILS

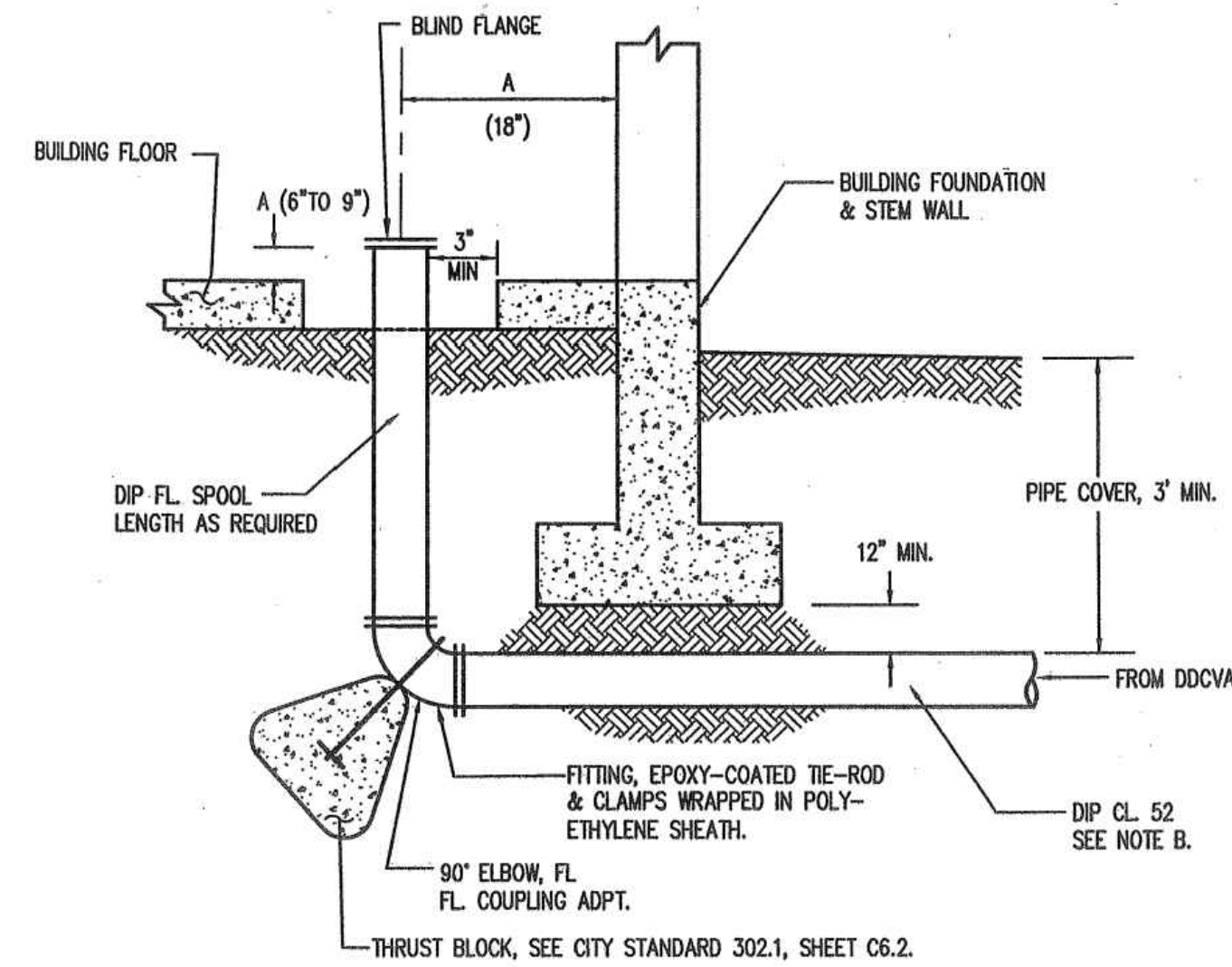
FOR

PUYALLUP CORPORATE PARK

A PORTION OF THE NE 1/4 OF THE SW 1/4 OF SEC. 26, TWP. 20 NORTH, RGE. 4 EAST, W.M.
CITY OF PUYALLUP, PIERCE COUNTY, WASHINGTON

FIRE PROTECTION SPRINKLER SYSTEM NOTES:

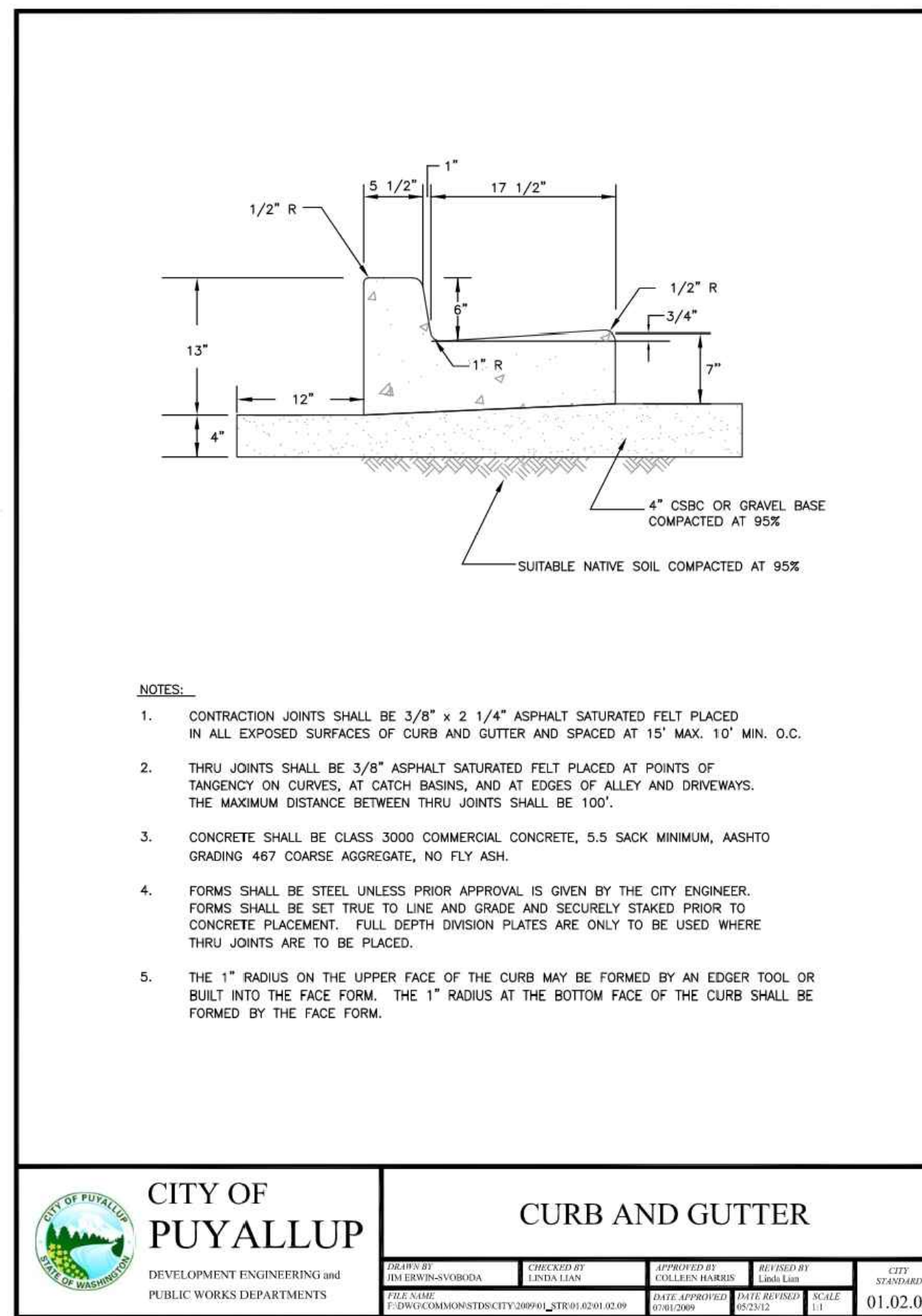
- BACKFLOW PREVENTER, FIRE DEPARTMENT CONNECTION AND CONNECTION TO SPRINKLER SYSTEM IS SUBJECT TO SEPARATE PERMIT AND INSPECTION. CONNECTION AND SIZES ARE SUBJECT TO CHANGE BY FIRE PROTECTION SPRINKLER ENGINEER AND FIRE MARSHALL. REPRESENTATION HEREON IS INTENDED FOR LOCATION AND BIDDING PURPOSES ONLY.
- ALL WORK ON THE UNDERGROUND PORTIONS OF FIRE PROTECTION SPRINKLER SYSTEMS AND/OR FIRE MAIN FOR HYDRANT PLACEMENT MUST BE INSTALLED AND CERTIFIED BY A LICENSED CONTRACTOR WHO HAS ACHIEVED A STATE LEVEL "U" CERTIFICATION. SUBCONTRACTING OF SUCH WORK TO PERSONS OR FIRMS NOT CURRENTLY LICENSED AS A FIRE PROTECTION SPRINKLER SYSTEM CONTRACTOR IS PROHIBITED UNDER WAC 212-80.



NOTES:
A. FOR DIMENSIONS, COORDINATE WITH BUILDING FIRE SPRINKLER CONTRACTOR.
B. SEE FIRE PROTECTION PLAN FOR PIPE SIZE.

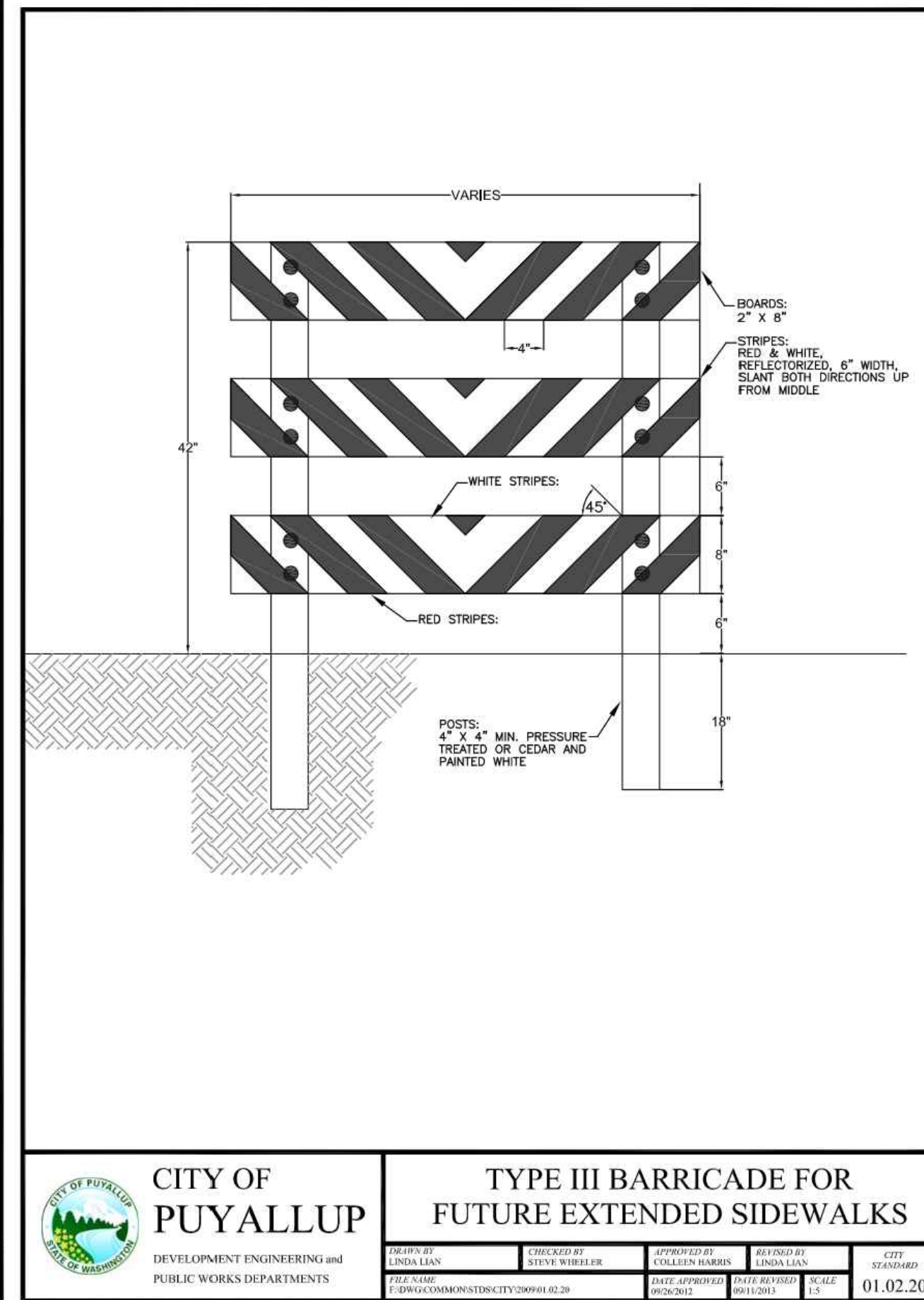
1 BUILDING SPRINKLER PIPE RISER

NOT TO SCALE

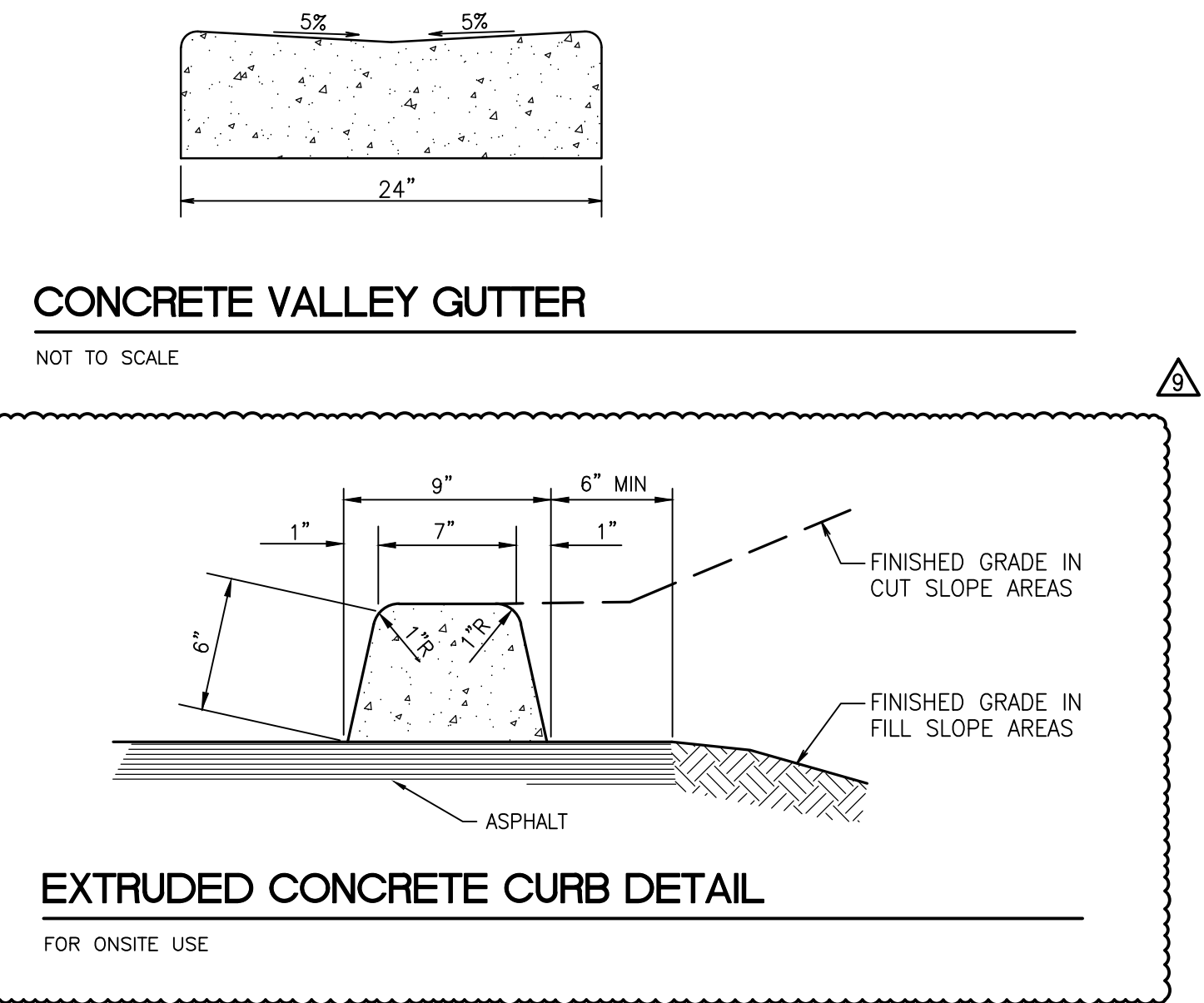


- NOTES:
- CONTRACTION JOINTS SHALL BE 3/8" x 2 1/4" ASPHALT SATURATED FELT PLACED IN ALL EXPOSED SURFACES OF CURB AND GUTTER AND SPACED AT 15' MAX. 10' MIN. O.C.
 - THRU JOINTS SHALL BE 3/8" ASPHALT SATURATED FELT PLACED AT POINTS OF TANGENCY ON CURVES, AT CATCH BASINS, AND AT EDGES OF ALLEYS AND DRIVEWAYS. THE MAXIMUM DISTANCE BETWEEN THRU JOINTS SHALL BE 100'.
 - CONCRETE SHALL BE CLASS 3000 COMMERCIAL CONCRETE, 5.5 SACK MINIMUM, AASHTO GRADING 487 COARSE AGGREGATE, NO FLY ASH.
 - FORMS SHALL BE STEEL UNLESS PRIOR APPROVAL IS GIVEN BY THE CITY ENGINEER. FORMS SHALL BE SET TRUE TO LINE AND GRADE AND SECURELY STAKED PRIOR TO CONCRETE PLACEMENT. FULL DEPTH DIVISION PLATES ARE ONLY TO BE USED WHERE THRU JOINTS ARE TO BE PLACED.
 - THE 1" RADIUS ON THE UPPER FACE OF THE CURB MAY BE FORMED BY AN EDGER TOOL OR BUILT INTO THE FACE FORM. THE 1" RADIUS AT THE BOTTOM FACE OF THE CURB SHALL BE FORMED BY THE FACE FORM.

CITY OF PUYALLUP		CURB AND GUTTER	
DESIGNED BY	CHECKED BY	DATE APPROVED	DATE REVISION
01.02.09			

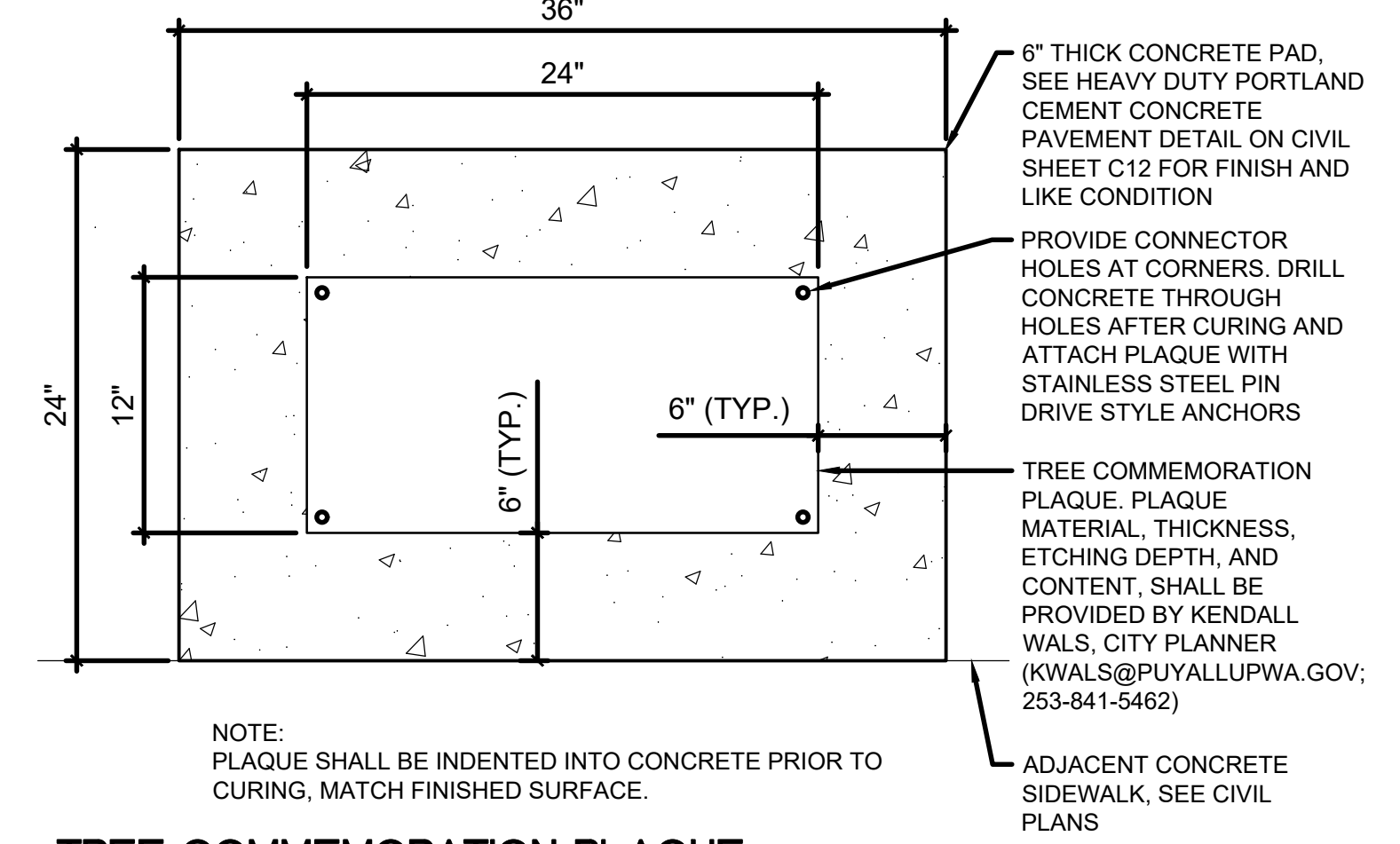


CITY OF PUYALLUP		TYPE III BARRICADE FOR FUTURE EXTENDED SIDEWALKS	
DESIGNED BY	CHECKED BY	DATE APPROVED	DATE REVISION
01.02.20			



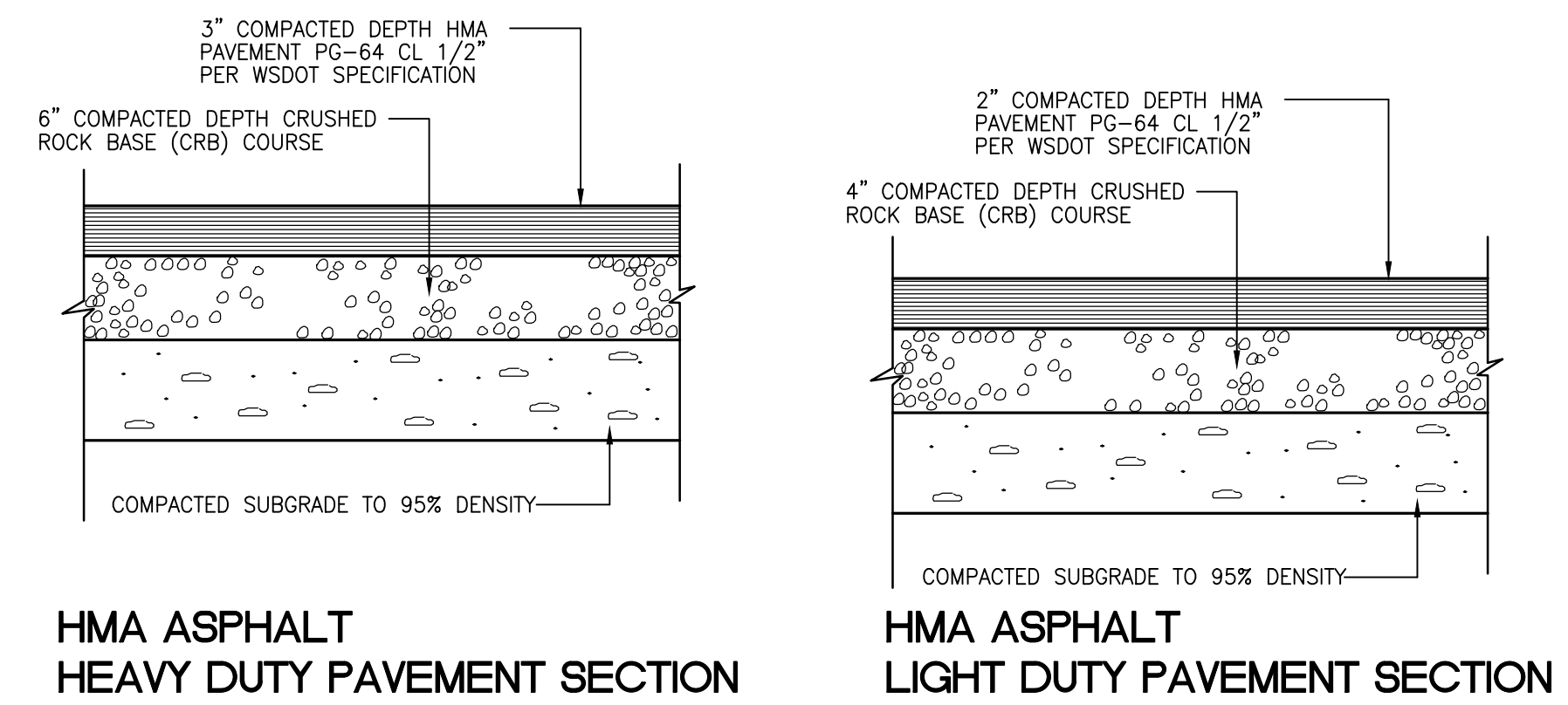
EXTRUDED CONCRETE CURB DETAIL

FOR ONSITE USE



TREE COMMEMORATION PLAQUE

NOT TO SCALE



HMA ASPHALT HEAVY DUTY PAVEMENT SECTION

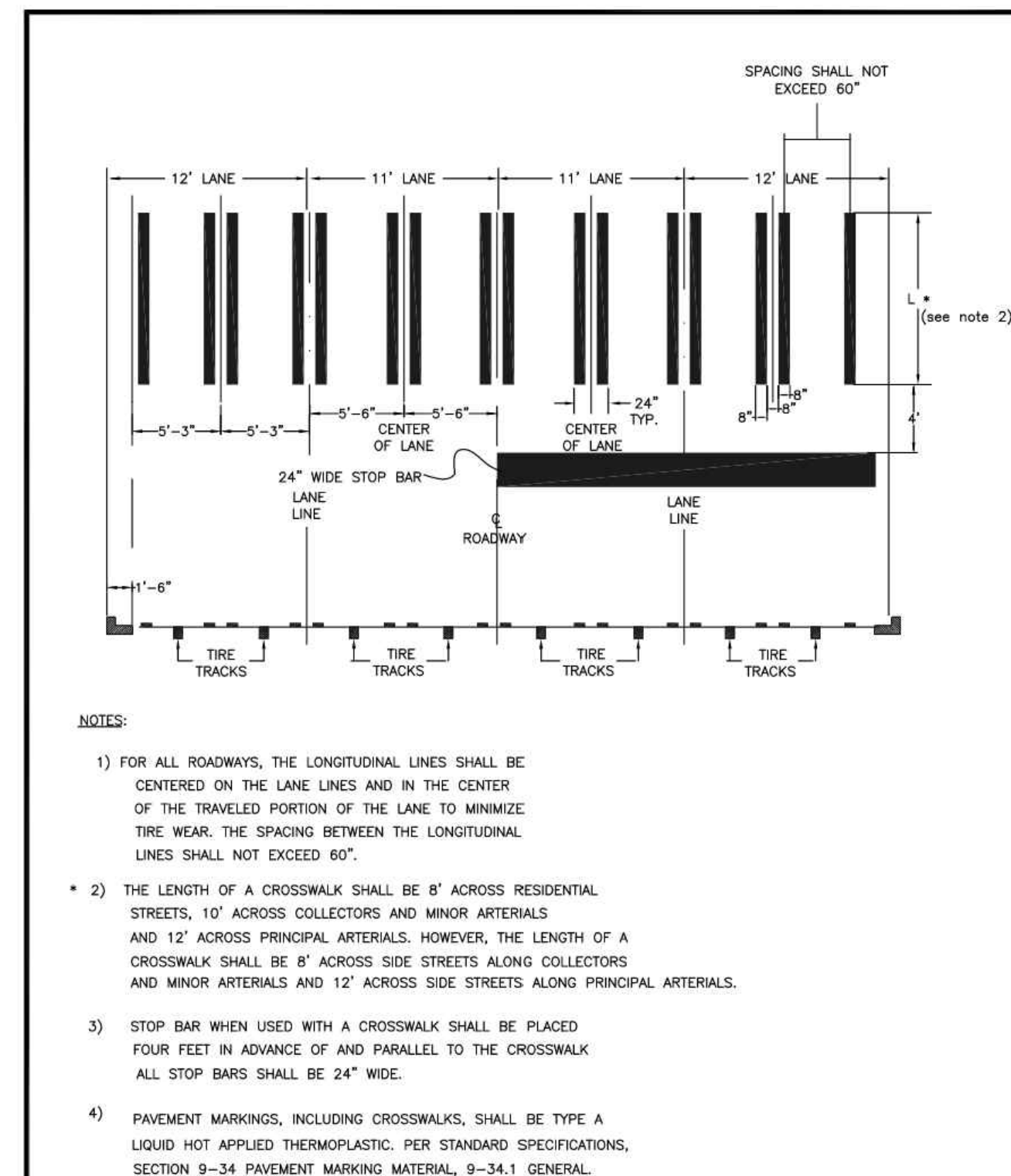
NOT TO SCALE

NOTE: PAVEMENT SECTION TO BE IN ACCORDANCE WITH RECOMMENDATIONS OF THE GEOTECHNICAL REPORT DATED JULY 13, 2020, PREPARED BY TERRA ASSOCIATES, INC.

HMA ASPHALT LIGHT DUTY PAVEMENT SECTION

NOT TO SCALE

NOTE: PAVEMENT SECTION TO BE IN ACCORDANCE WITH RECOMMENDATIONS OF THE GEOTECHNICAL REPORT DATED JULY 13, 2020, PREPARED BY TERRA ASSOCIATES, INC.



- NOTES:
- FOR ALL ROADWAYS, THE LONGITUDINAL LINES SHALL BE CENTERED ON THE LANE LINES AND IN THE CENTER OF THE TRAVELED PORTION OF THE LANE TO MINIMIZE TIRE WEAR. THE SPACING BETWEEN THE LONGITUDINAL LINES SHALL NOT EXCEED 60".
 - THE LENGTH OF A CROSSWALK SHALL BE 8' ACROSS RESIDENTIAL STREETS, 10' ACROSS COLLECTORS AND MINOR ARTERIALS AND 12' ACROSS PRINCIPAL ARTERIALS. HOWEVER, THE LENGTH OF A CROSSWALK SHALL BE 8' ACROSS SIDE STREETS ALONG COLLECTORS AND MINOR ARTERIALS AND 12' ACROSS SIDE STREETS ALONG PRINCIPAL ARTERIALS.
 - STOP BAR WHEN USED WITH A CROSSWALK SHALL BE PLACED FOUR FEET IN ADVANCE OF AND PARALLEL TO THE CROSSWALK. ALL STOP BARS SHALL BE 24" WIDE.
 - PAVEMENT MARKINGS, INCLUDING CROSSWALKS, SHALL BE TYPE A LIQUID HOT APPLIED THERMOPLASTIC. PER STANDARD SPECIFICATIONS, SECTION 9-34 PAVEMENT MARKING MATERIAL, 9-34.1 GENERAL.

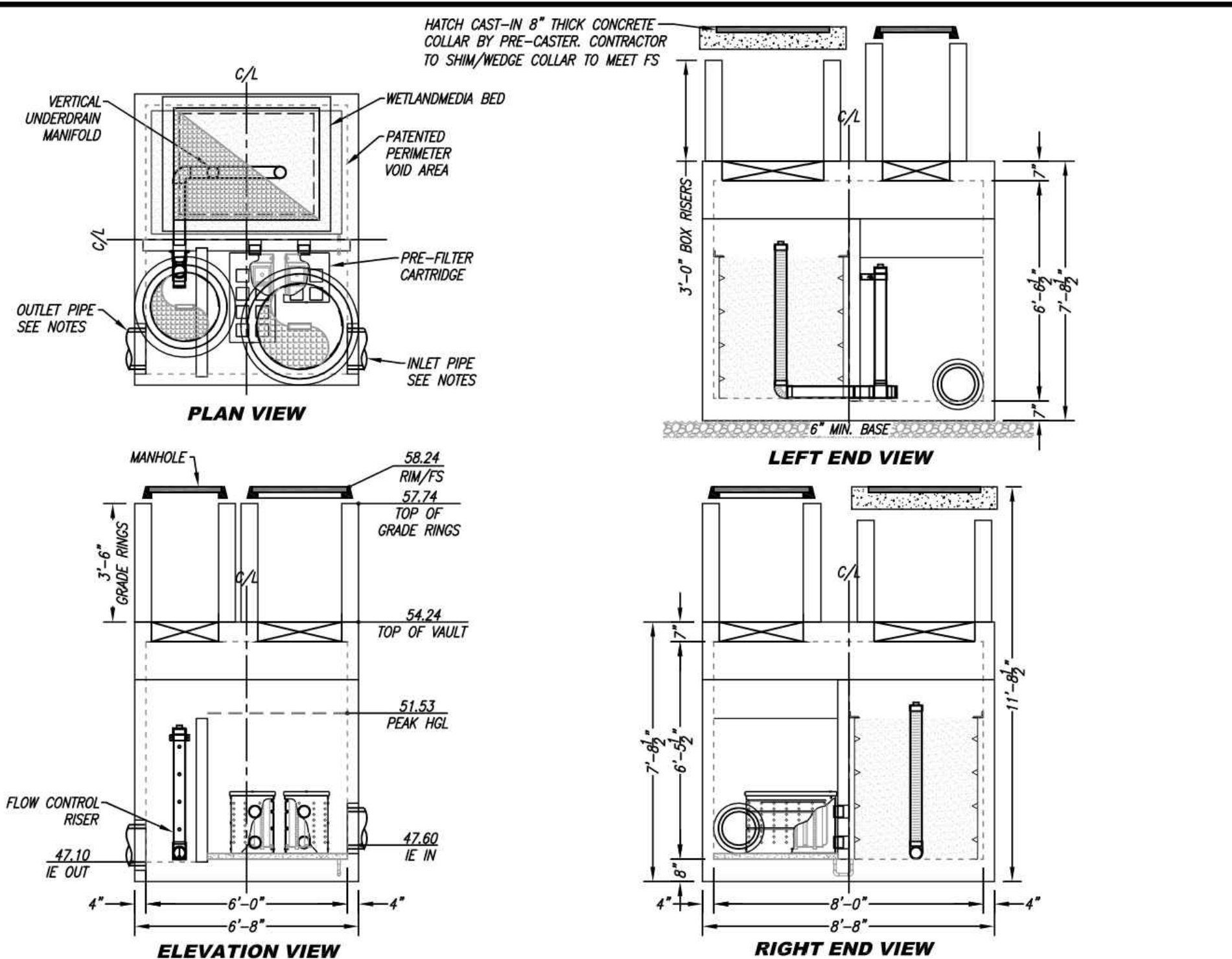
CITY OF PUYALLUP		CROSSWALK DETAIL	
DESIGNED BY	CHECKED BY	DATE APPROVED	DATE REVISION
01.03.11			

HEAVY DUTY PORTLAND CEMENT CONCRETE PAVEMENT

NOT TO SCALE

NOTE: PAVEMENT SECTION TO BE IN ACCORDANCE WITH RECOMMENDATIONS OF THE GEOTECHNICAL REPORT DATED JULY 13, 2020, PREPARED BY TERRA ASSOCIATES, INC.

SITE SPECIFIC DATA		
PROJECT NUMBER	10931	
PROJECT NAME	PUYALLUP CORPORATE PARK	
PROJECT LOCATION	PUYALLUP, WA	
TREATMENT REQUIRED		
VOLUME BASED (CF)	2-YEAR RELEASE RATE (CFS)	
	0.175885	
PEAK BYPASS REQUIRED (CFS) - IF APPLICABLE	0.75	
PIPE DATA		
PIPE DATA	MATERIAL	DIAMETER
INLET PIPE	CPEP	12"
OUTLET PIPE	CPEP	12"
PRETREATMENT BIOFILTRATION		
RIM ELEVATION	58.24	58.24
SURFACE LOAD	LOAD LEVEL 4 PER ASTM C1802	
FRAME & COVER	#30" 36" X 48" #24"	
WETLANDMEDIA VOLUME (CY)	3.23	
ORIFICE SIZE (DIA. INCHES)	5 EA #1.02"	
NOTES:		



INTERNAL BYPASS DISCLOSURE:

THE DESIGN AND CAPACITY OF THE PEAK CONVEYANCE METHOD TO BE REVIEWED AND APPROVED BY THE ENGINEER OF RECORD. HGL(S) AT PEAK FLOW SHALL BE ASSESSED TO ENSURE NO UPSTREAM FLOODING. PEAK HGL AND FLOW CAPACITY SHOWN ON DRAWING ARE USED FOR GUIDANCE ONLY.

2-YEAR RELEASE RATE (CFS)	0.175885
OPERATING HEAD (FT)	4.1
PRETREATMENT LOADING RATE (GPM/SF)	2.1
WETLANDMEDIA LOADING RATE (GPM/SF)	1.0

MWS-L-6-8-6"-V-UG-HC
STORMWATER BIOFILTRATION SYSTEM
STANDARD DETAIL

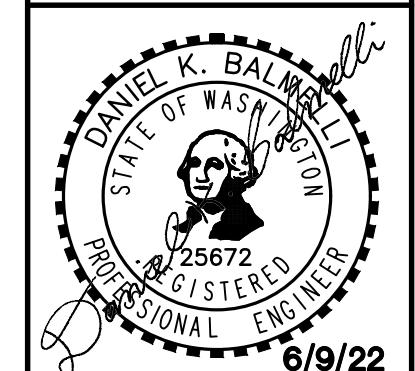
- INSTALLATION NOTES
- CONTRACTOR TO PROVIDE ALL LABOR, EQUIPMENT, MATERIALS AND INCIDENTALS REQUIRED TO OFFLOAD AND INSTALL THE SYSTEM AND APURTANCES IN ACCORDANCE WITH THIS DRAWING AND THE MANUFACTURERS SPECIFICATIONS, UNLESS OTHERWISE STATED IN MANUFACTURERS CONTRACT.
 - UNIT MUST BE INSTALLED ON LEVEL BASE. MANUFACTURER RECOMMENDS A MINIMUM 6" LEVEL ROCK BASE UNLESS SPECIFIED BY THE PROJECT ENGINEER. CONTRACTOR IS RESPONSIBLE TO VERIFY PROJECT ENGINEERS RECOMMENDED BASE SPECIFICATIONS.
 - ALL PIPES MUST BE FLUSH WITH INSIDE SURFACE OF CONCRETE. PIPES CANNOT INTRUDE BEYOND FLOW INVERT OF OUTFLOW PIPE MUST BE FLUSH WITH DISCHARGE CHAMBER FLOOR. ALL GAPS AROUND PIPES SHALL BE SEALED WATER TIGHT WITH A NON-SHRINK GROUT PER MANUFACTURERS STANDARD CONNECTION DETAIL AND SHALL MEET OR EXCEED REGIONAL PIPE CONNECTION STANDARDS.
 - CONTRACTOR TO SUPPLY AND INSTALL ALL EXTERNAL CONNECTING PIPES.
 - CONTRACTOR RESPONSIBLE FOR INSTALLATION OF ALL RISERS, MANHOLES, AND HATCHES. CONTRACTOR TO GROUT ALL MANHOLES AND HATCHES TO MATCH FINISHED SURFACE UNLESS SPECIFIED OTHERWISE.
 - DROP OR SPRAY IRRIGATION REQUIRED ON ALL UNITS WITH VEGETATION.
 - CONTRACTOR RESPONSIBLE FOR CONTACTING MODULAR WETLANDS FOR ACTIVATION OF UNIT. MANUFACTURERS WARRANTY IS VOID WITH OUT PROPER ACTIVATION BY A MODULAR WETLANDS REPRESENTATIVE.
- GENERAL NOTES
- MANUFACTURER TO PROVIDE ALL MATERIALS UNLESS OTHERWISE NOTED.
 - ALL DIMENSIONS, ELEVATIONS, SPECIFICATIONS AND CAPACITIES ARE SUBJECT TO CHANGE. FOR PROJECT SPECIFIC DRAWINGS DETAILING EXACT DIMENSIONS, WEIGHTS AND ACCESSORIES PLEASE CONTACT MANUFACTURER.

THE PRODUCT DESCRIBED MAY BE PROTECTED BY ONE OR MORE OF THE FOLLOWING OR OTHER INTELLECTUAL PROPERTY RIGHTS. ANY REPRODUCTION IN PART OR AS A WHOLE WITHOUT THE WRITTEN PERMISSION OF MODULAR WETLANDS SYSTEMS IS PROHIBITED.



Title: CONSTRUCTION NOTES AND DETAILS
FOR PUYALLUP CORPORATE PARK

For: PANATTONI DEVELOPMENT CO.
900 SW 16TH STREET, SUITE 330
RENTON, WA 98057



Scale: Horizontal Vertical
Designed: ZTW
Drawn: ZTW
Checked: ZTW
Approved: DKB
Date: 6/9/22

Barghausen Consulting Engineers, Inc.
18215 72nd Avenue South
Kent, WA 98032
425.251.6222
barghausen.com

Job Number: 20705
Sheet: C12 of 23

APPROVED
BY: CITY OF PUYALLUP
ENGINEERING SERVICES
DATE:

NOTE: THIS APPROVAL IS VOID AFTER 1 YEAR FROM APPROVAL DATE. THE CITY WILL NOT BE RESPONSIBLE FOR ERRORS AND/OR OMISSIONS ON THESE PLANS. FIELD CONDITIONS MAY DICTATE CHANGES TO THESE PLANS AS DETERMINED BY THE ENGINEERING SERVICES MANAGER.