

IDI LOGISTICS RED DOT OFFICE & WAREHOUSE TI

2504 EAST MAIN AVENUE
PUYALLUP, WA 98372

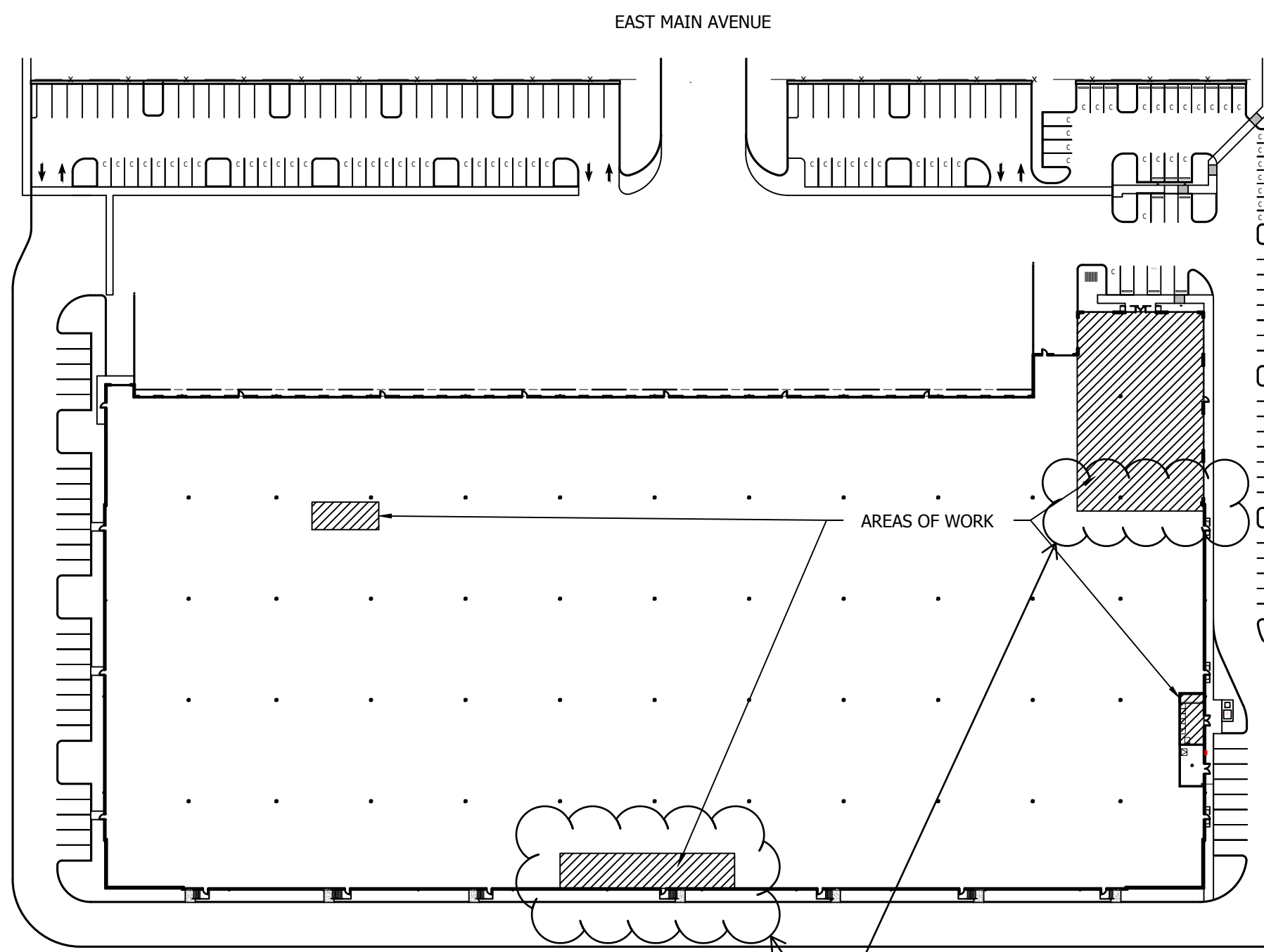
THIS PLAN IS REFERENCE ONLY

APPROVED BY: Initials _____
Date _____



PROJECT SITE IMAGE FROM PIERCE COUNTY PARCEL VIEWER

2 AN-0 VICINITY MAP NTS



1 AN-0 SITE/BUILDING PLAN NTS

DRAWING INDEX				
SHEET NUMBER	SHEET TITLE	SHEET ISSUE DATE	REVISION ISSUE DATE	DRAWING REVISION NUMBER
GENERAL				
AN-0	COVER SHEET	5/17/2022		
AN-1	GENERAL NOTES AND ABBREVIATIONS	5/17/2022		
AN-2	ACCESSIBILITY DETAILS	5/17/2022		
AN-3	LIFE SAFETY PLAN	5/17/2022		
AN-4	ENERGY COMPLIANCE	5/17/2022		
LANDSCAPE				
L100	CONTEXT LANDSCAPE PLAN	5/9/2022		
L101	LANDSCAPE PLAN & SCHEDULE	5/9/2022		
L102	IRRIGATION PLAN	5/9/2022		
L501	LANDSCAPE DETAILS	5/9/2022		
L502	LANDSCAPE SPECIFICATIONS & DETAILS	5/9/2022		
L503	IRRIGATION DETAILS	5/9/2022		
ARCHITECTURAL				
A0.1	SITE PLAN & WAREHOUSE USE PLAN	5/17/2022		
A0.2	ENLARGED SITE PLAN	5/17/2022		
A0.3	DEMOLITION PLAN	5/17/2022		
A2.0	BUILDING PLAN	5/17/2022		
A2.1	FLOOR PLANS	5/17/2022		
A2.2	REFLECTED CEILING PLANS	5/17/2022		
A2.3	POWER/COMM PLANS	5/17/2022		
A2.4	WAREHOUSE AREA FLOOR PLANS	5/17/2022		
A5.1	ENLARGED PLANS, ELEVATIONS CASEWORK DETAILS	5/17/2022		
A5.4	ELEVATIONS, SECTION & ELEVATOR DETAILS	5/17/2022		
A6.1	DOOR SCHEDULE	5/17/2022		
A6.2	FINISH SCHEDULE	5/17/2022		
A8.1	WALL TYPES	5/17/2022		
A8.2	CEILING DETAILS	5/17/2022		
A10.1	SPECIFICATIONS	5/17/2022		
STRUCTURAL				
S0.1	STRUCTURAL NOTES	4/20/2022		
S0.2	STRUCTURAL NOTES	4/20/2022		
S0.3	TYPICAL DETAILS	4/20/2022		
S0.4	SPECIAL INSPECTION	4/20/2022		
S0.5	SPECIAL INSPECTION, TYPICAL NOTES AND SCHEDULES	4/20/2022		
S1.1	FOUNDATION AND FLOOR FRAMING PLANS	4/20/2022		
S2.1	FOUNDATION DETAILS	4/20/2022		
S3.1	FRAMING DETAILS	4/20/2022		
S3.1	RAMING DETAILS	4/20/2022		

PROJECT DIRECTORY

CLIENT: IDI LOGISTICS
 ATTN: AARON SCHERER
 840 APOLLO STREET, SUITE 343
 EL SEGUNDO, WA 90245
 TEL: 657.327.2441
 EMAIL: AARON.SCHERER@IDILOGISTICS.COM

ARCHITECT: NELSON WORLDWIDE
 ATTN: MARK EVANS
 1200 FIFTH AVE, #1300
 SEATTLE, WA 98101
 TEL: 206.408.8519
 EMAIL: MEVANS@NELSONWW.COM

STRUCTURAL: AHBL, INC
 ATTN: ANDY PFLUEGER
 2215 NORTH 30TH ST, SUITE 300
 TACOMA, WA 98403
 TEL: 253.383.2422
 EMAIL: APFLUEGER@AHBL.COM

CIVIL: BARGHAUSEN CONSULTING ENGINEERS
 ATTN: ZAYIN WALL
 18215 72ND AVE S, SUITE 220
 KENT, WA 99032
 TEL: 425.251.6222
 EMAIL: ZWALL@BARGHAUSEN.COM

LANDSCAPE: AHBL, INC.
 ATTN: KEVIN CASH
 827 W FIRST AVE, SUITE 220
 SPOKANE, WA 99201
 TEL: 509.252.5019
 EMAIL: KCASH@AHBL.COM

GENERAL CONTRACTOR: POE CONSTRUCTION
 ATTN: CLAY JOHNSON
 1519 WEST VALLEY HIGHWAY NORTH, CUTIE 103
 AUBURN, WA 98001
 TEL: 206.406.3422
 EMAIL: APFLUEGER@AHBL.COM

BUILDING INFORMATION

SITE ADDRESS: 2504 EAST MAIN AVENUE
 PUYALLUP, WA 98372

PARCEL NUMBER: 0420264065

LEGAL DESCRIPTION: Section 26 Township 20 Range 04 Quarter 31 LOT COMB 2020-09-17-0229 BEG AT NE COR OF ACKERSONS 2ND ADD ON E LI OF R. NIX DLC TH N 88 DEG 50 MIN 04 SEC W 800 FT TH N 00 DEG 30 MIN 31 SEC E 532.66 FT TH S 89 DEG 01 MIN 50 SEC E 799.95 FT TH S 00 DEG 30 MIN 22 SEC W 535.4 FT TO POB EASE OF REC COMB OF 04-20-26-3-700 & 4-038 SEG 2021-0156 JP 09/30/20 JP

ZONING: ML LIMITED MANUFACTURING

CONSTRUCTION TYPE: IIIIB

FIRE PROTECTION: FULLY SPRINKLERED

BUILDING TOTAL FLOOR AREA: 198,146 SF

OCCUPANCY TYPE: S-1 (WAREHOUSE) / F-1 (MANUFACTURING) / B (OFFICE)

PROPOSED SUITE AREA: 4,297 SF OFFICE (NEW) (B)
 4,829 SF MEZZANINE OFFICE (NEW) (B)
 3,220 SF OFFICE (EXISTING) (B)
 2,718 SF MEZZANINE OFFICE (EXISTING) (B)
 185,625 SF WAREHOUSE (S-1) / MANUFACTURING (F-1)
 200,689 SF TOTAL

City of Puyallup
Development & Permitting Services
ISSUED PERMIT

Building	Planning
Engineering	Public Works
Fire	Traffic

CLIENT: IDI Logistics

IDI LOGISTICS
840 APOLLO STREET, SUITE 343
EL SEGUNDO, CA 90245

PROJECT: RED DOT OFFICE TI

2504 EAST MAIN AVENUE
PUYALLUP, WA 98372

Description: No: Date:
PERMIT SUBMITTAL 5/17/2022

APPLICABLE CODES

- 2018 INTERNATIONAL BUILDING CODE (IBC)
- 2018 INTERNATIONAL EXISTING BUILDING CODE (IEBC)
- 2018 INTERNATIONAL FIRE CODE (IFC)
- 2018 UNIFORM PLUMBING CODE (UPC)
- 2018 INTERNATIONAL MECHANICAL CODE (IMC)
- 2018 INTERNATIONAL FUEL GAS CODE (IFGC)
- 2018 NATIONAL ELECTRICAL CODE (NEC)
- 2018 WASHINGTON STATE AMENDMENTS
- 2018 WASHINGTON STATE ENERGY CODE
- 2017 ICC/ANSI A117.1 - ACCESSIBLE AND USABLE BUILDINGS AND FACILITIES

THE APPROVED CONSTRUCTION PLANS, DOCUMENTS AND ALL ENGINEERING MUST BE POSTED ON THE JOB AT ALL INSPECTIONS IN A VISIBLE AND READILY ACCESSIBLE LOCATION.

FULL SIZED LEDGIBLE COLOR PLANS ARE REQUIRED TO BE PROVIDED BY THE PERMITEE ON SITE FOR INSPECTION

Approval of submitted plans is not an approval of omissions or oversights by this office or noncompliance with any applicable regulations of local government. The contractor is responsible for making sure that the building complies with all applicable codes and regulations of the local government.

City of Puyallup
Building APPROVED

See permit for additional requirements.

JMontgomery
08/16/2022
10:13:58 AM

GENERAL INFORMATION AND SITE PLAN

Proj. No: 21.0000440.000 Reviewed By:

PRCTI20220873

AN-0

THIS PLAN IS REFERENCE ONLY

GENERAL NOTES

1. ALL PARKING STALLS ARE 9'-0" x 20'-0" U.O.N.
2. COMPACT PARKING STALLS MARKED WITH A 'C' ARE 8'-0" x 17'-0"
3. ALL SIDEWALKS ARE 5'-0" WIDE CONCRETE WITH BROOM FINISH & 5'-0" O.C. SCORING PATTERN WITH MAX 1:20 SLOPE & 1:48 CROSS SLOPE, U.O.N.
4. SEE CIVIL DRAWINGS FOR LOCATIONS OF CAST-IN-PLACE CURBS AND EXTRUDED CURBS.
5. SEE CIVIL DRAWINGS FOR AREAS OF STANDARD AND HEAVY PAVING SECTIONS.
6. ALL CONCRETE MONUMENT SIGNAGE IS UNDER SEPARATE SIGNAGE PERMIT.
7. SEE ARCHITECTURAL SHEET A0.4 FOR SITE DETAILS.
8. PROVIDE DETECTABLE WARNING TEXTURE PER CODE ON ALL SIDEWALK RAMP AND CURB RAMP.
9. COMPLY WITH IBC CHAPTER 11 BARRIER FREE REQUIREMENTS.
10. SITE LIGHT TO BE LED WITH 1 FC MIN. ALL LIGHT POLE BASES TO BE AS SMALL/THIN AS POSSIBLE.

LEGEND

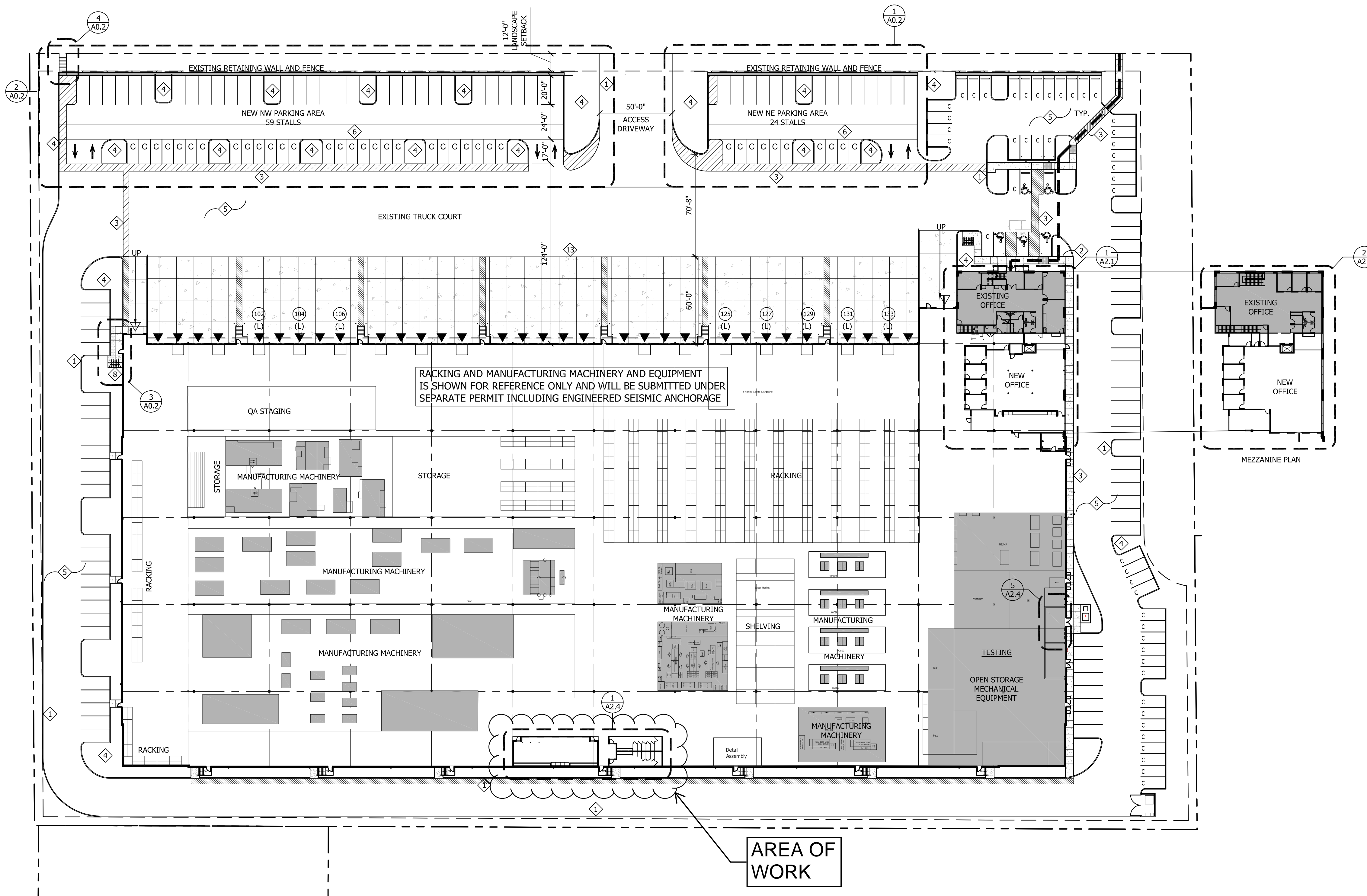
- ACCESSIBLE ROUTE TO THE PUBLIC WAY
- EV ELECTRICAL VEHICLE INFRASTRUCTURE
- (L) DOCK LOCK LOCATIONS

KEY NOTES

1. CONCRETE CURB, SEE CIVIL DRAWINGS
2. CONCRETE SIDEWALK W/ BROOM FINISH, MAX 1:20 SLOPE & MAX 1:48 CROSS SLOPE
3. 5' WIDE STRIPED DRIVE AISLE CROSSING, TYP.
4. LANDSCAPING PER LANDSCAPE PLAN
5. ASPHALT DRIVE AISLE & STRIPED PARKING PER CIVIL
6. EXISTING 10' WIDE CONC. 'DOLLY PAD' WITH FIBER MESH PER CIVIL PLANS
7. EXISTING PARKING TRAILER LINES TO BE REMOVED
8. DRAPER TRADITIONAL BIKE RACK, SINGLE-SIDED, MODEL 505338, 8 BIKE CAPACITY

City of Puyallup
Development & Permitting Services
ISSUED PERMIT

Building	Planning
Engineering	Public Works
Fire	Traffic



TENANT PLAN AREA BREAKDOWN

TENANT RACKING AND MANUFACTURING MACHINERY AND EQUIPMENT SHOP LAYOUT IS SHOWN FOR REFERENCE ONLY FOR THE PURPOSE OF DETERMINING PARKING REQUIREMENTS. A DETAILED TENANT PLAN WITH MACHINERY SUPPORT ENGINEERING WILL BE SUBMITTED UNDER SEPARATE PERMIT.

THE TENANT PLAN LAYOUT SHOWS THE FOLLOWING CATEGORIES OF USE:

1. MACHINES AND PROCESSES TO PRODUCE MANUFACTURED PARTS. AREAS INDICATED IN GRAY INCLUDE EQUIPMENT/MACHINE AND OPERATORS TO COMPLETE THE WORK (MANUFACTURING).
2. AREA FOR FORKLIFT TRAFFIC, EMPLOYEE WALKWAYS, MOVEMENT OF COMPONENTS FROM ONE WORK CENTER TO THE NEXT (GENERAL CIRCULATION).
3. STORAGE AND RACKING OF FINISHED COMPONENTS (RACKING/STORAGE WAREHOUSE).
4. TESTING AND PROTOTYPING OF FUTURE MANUFACTURED COMPONENTS. THE TESTING AREA IS WHERE PROTOTYPES WILL BE TESTED TO VERIFY NEW PARTS MEET THE REQUIREMENTS OF CUSTOMERS BEFORE UNITS GO INTO PRODUCTION. THIS IS A COMBINATION OF BENCH TOP TESTING AND COMPLETE VEHICLE TESTING. FOR VEHICLE TESTING, CUSTOMERS SEND A VEHICLE FOR FITTING AND INSTALLATION OF PROTOTYPE UNITS IN THEM TO TEST IN REAL WORK CONDITIONS (TESTING AND PROTOTYPING).



IDI LOGISTICS
840 APOLLO STREET, SUITE 343
EL SEGUNDO, CA 90245

RED DOT OFFICE TI

2504 EAST MAIN AVENUE
PUYALLUP, WA 98372

Description: No: Date:
PERMIT SUBMITTAL 05/17/2022
PERMIT COMMENTS 08/01/2022

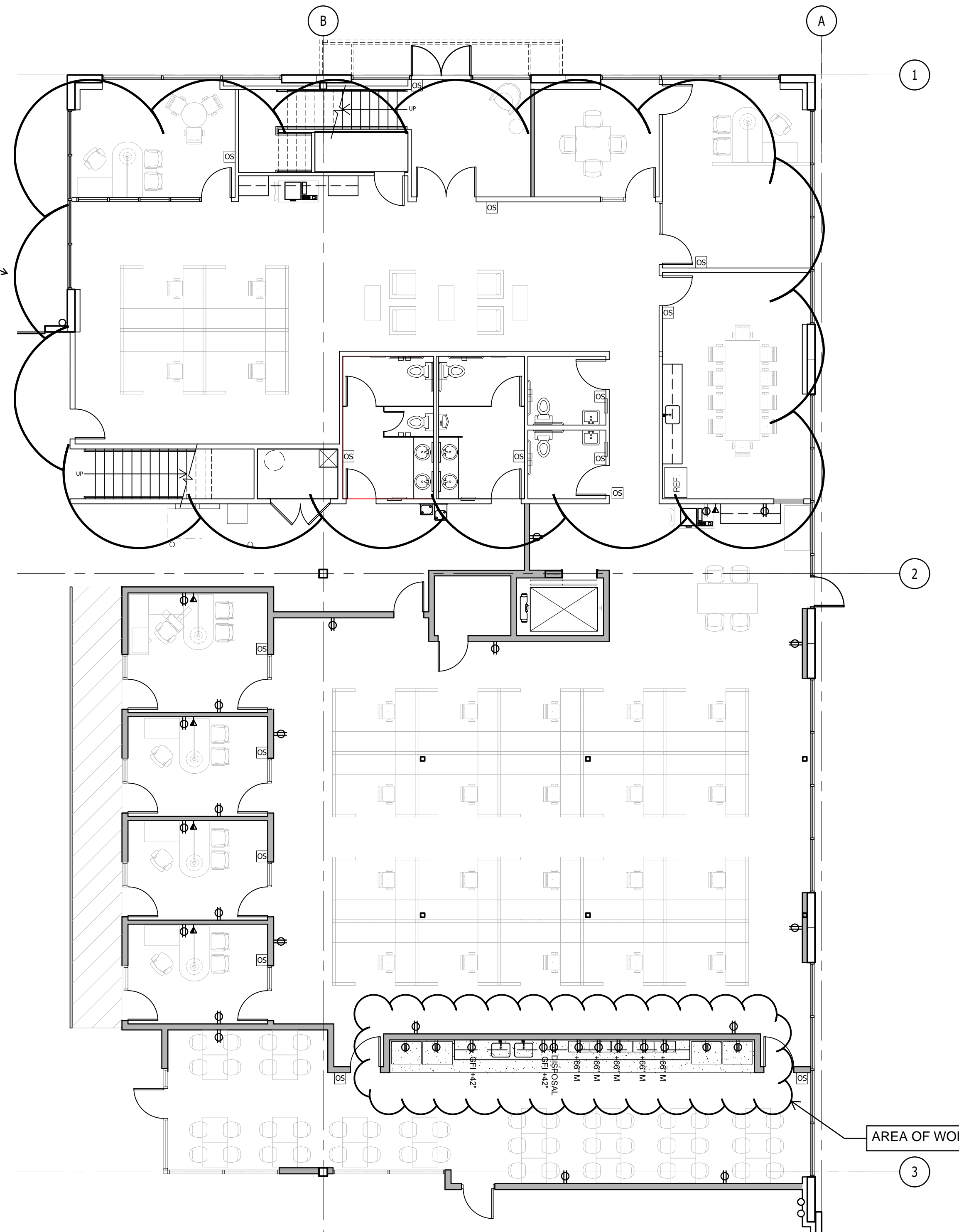
SITE/BUILDING AREAS & PARKING

SITE AREA
428,227 SF (9.83 ACRES)

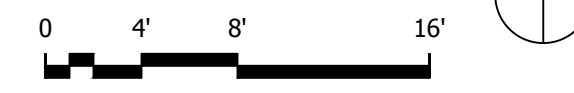
BUILDING AREA
7,517 SF (1ST FLOOR OFFICE)
7,547 SF (MEZZANINE OFFICE)
1,160 SF (SHOP BREAKROOM)
18,180 SF (MANUFACTURING)
14,511 SF (TESTING AND PROTOTYPING)
32,884 SF (RACKING/STORAGE WAREHOUSE)
118,890 SF (GENERAL CIRCULATION)
200,689 SF TOTAL

PARKING
39 STALLS (19,340 SF MANUFACTURING & BREAKROOM @ 1/500 SF)
51 STALLS (15,064 SF OFFICE @ 1/300 SF)
15 STALLS (14,511 SF TESTING & PROTOTYPING @ 1/1,000 SF)
51 STALLS (151,774 SF STORAGE & CIRCULATION @ 1/3,000 SF)
156 TOTAL STALLS REQUIRED
102 REGULAR STALLS PROVIDED (9' x 20')
83 COMPACT STALLS PROVIDED (8' x 17') 44% OF TOTAL
5 ADA STALLS PROVIDED
190 TOTAL STALLS PROVIDED

NOT IN
SCOPE OF
WORK

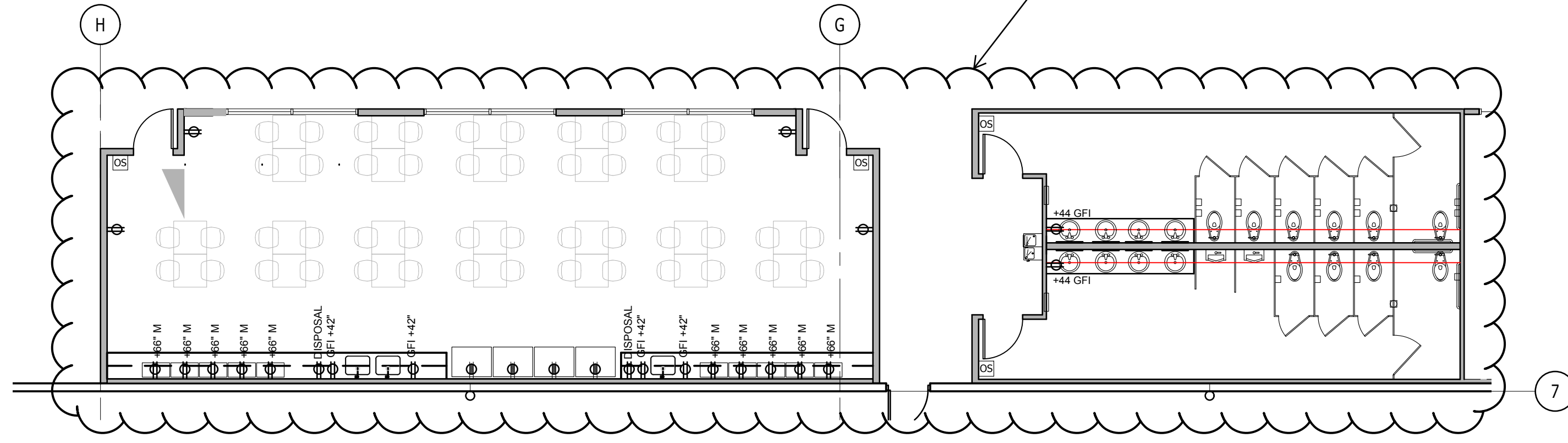


1 1ST FLOOR PLAN- POWER/ COMM
A2.3 1/8"=1'-0"

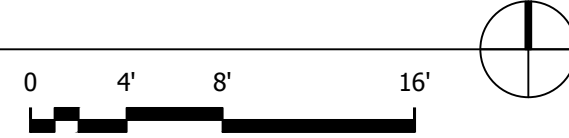


THIS PLAN IS REFERENCE ONLY

AREA OF WORK



3 BREAK AREA- POWER/ COMM PLAN
A2.3 1/8"=1'-0"



City of Puyallup
Development & Permitting Services
ISSUED PERMIT

Building	Planning
Engineering	Public Works
Fire	Traffic

IDI Logistics

IDI LOGISTICS
840 APOLLO STREET, SUITE 343
EL SEGUNDO, CA 90245

RED DOT OFFICE TI

2504 EAST MAIN AVENUE
PUYALLUP, WA 98372

Description: No: Date:
PERMIT SUBMITTAL 5/17/2022

PRCTI20220873

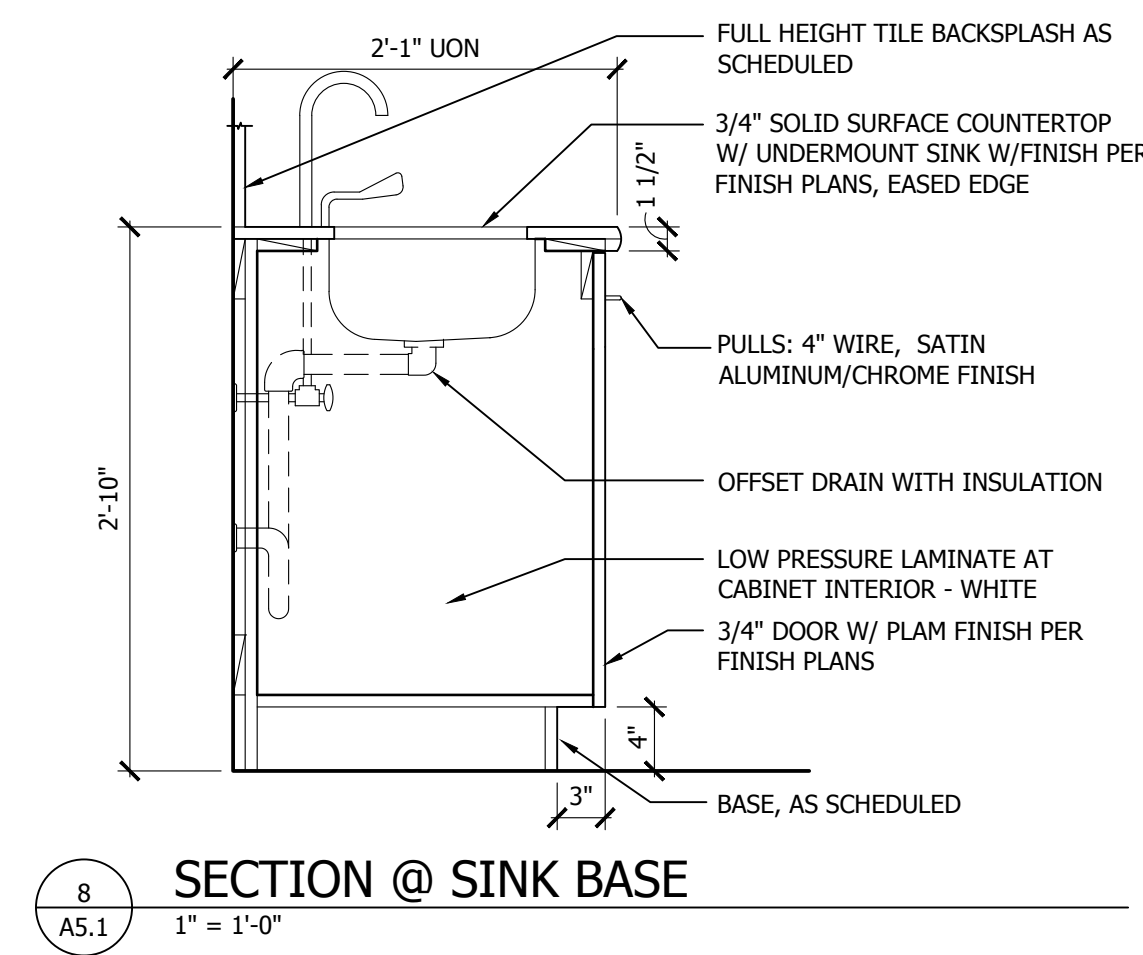
GENERAL NOTES

1. ALL EXISTING BUILDING COLUMNS, EXTERIOR WALLS, EXTERIOR WINDOWS, AND STRUCTURAL MEMBERS TO REMAIN, UNO.
2. NEW RESTROOM(S) TO BE FULLY ACCESSIBLE PER THE PROVISIONS OF ANSI A117.1 SECTION 603 AS SUMMARIZED ON SHEET AN-3.

KEY NOTES

RESTROOM ACCESSORY MANUFACTURER: BOBRICK, CLASSIC SERIES, UNO. STAINLESS STEEL WITH SATIN FINISH

1. WATER CLOSET. REFER TO 604/AN-3. FLUSH CONTROLS SHALL BE ON OPEN SIDE OF THE WATER CLOSET.
2. SINK IN COUNTER TOP. REFER TO 606/AN-3.
3. WALL MOUNT SINK. REFER TO 606/AN-3.
4. SURFACE MOUNTED MIRROR. 24X36. REFER TO 603/AN-3.
5. SURFACE MOUNTED TOILET PAPER DISPENSER MOUNTED BELOW GRAB BAR MOUNTING ZONE. REFER TO 604.7/AN-3.
6. SURFACE MOUNTED SANITARY NAPKIN DISPOSAL. REFER TO 606/AN-3.
7. SURFACE MOUNTED TOILET SEAT COVER DISPENSER. REFER TO 606/AN-3.
8. TOILET PARTITION, OVERHEAD BRACED. PLASTIC LAMINATE OR PER TENANT STANDARD. REFER TO 604/AN-3.
9. RECESSED PAPER TOWEL DISPENSER/WASTE RECEPTACLE, TYP. REFER TO 606/AN-3.
10. SURFACE MOUNTED GRAB BARS PER ICC/ANSI A117.1 SECTIONS 604 AND 609, SEE ALSO DETAIL 19/AS.1. PROVIDE BLOCKING AS REQUIRED.
11. FLOOR DRAIN WITH TRAP PRIMER. 12" SQUARE SECTION OF FLOOR TO SLOPE TOWARD FLOOR DRAIN.
12. WALL HUNG URINAL. REFER TO 605/AN-3.
13. MANEUVERING CLEARANCES / CLEAR FLOOR SPACE REQUIRED AT FIXTURE. REFER TO 305, 404, 604/AN-3, TYP.
14. WAINSCOT, TYPICAL ALL (4) WALLS, UNO OR SHOWN WITHOUT WAINSCOT IN ELEVATION OR ON FINISH SCHEDULE
15. WHITE INSULATION/COVER, SEE 606.6/AN-3.
16. SIGNAGE WITH BRAILLE, REFER TO 703/AN-3
SINGLE OCCUPANCY: TRIMCO, 529, BLUE, MENS: TRIMCO, 527, BLUE, WOMENS: TRIMCO, 528, BLUE
17. NEW ACCESSIBLE (HI/LO) DRINKING FOUNTAIN AND CANE DETECTABLE GUARD (NOT REQUIRED AT RECESSED LOCATION).



SECTION @ SINK BASE
1" = 1'-0"

THIS PLAN IS REFEREN

City of Puyallup
Development & Permitting Services
ISSUED PERMIT

Building	Planning
Engineering	Public Works
Fire	Traffic

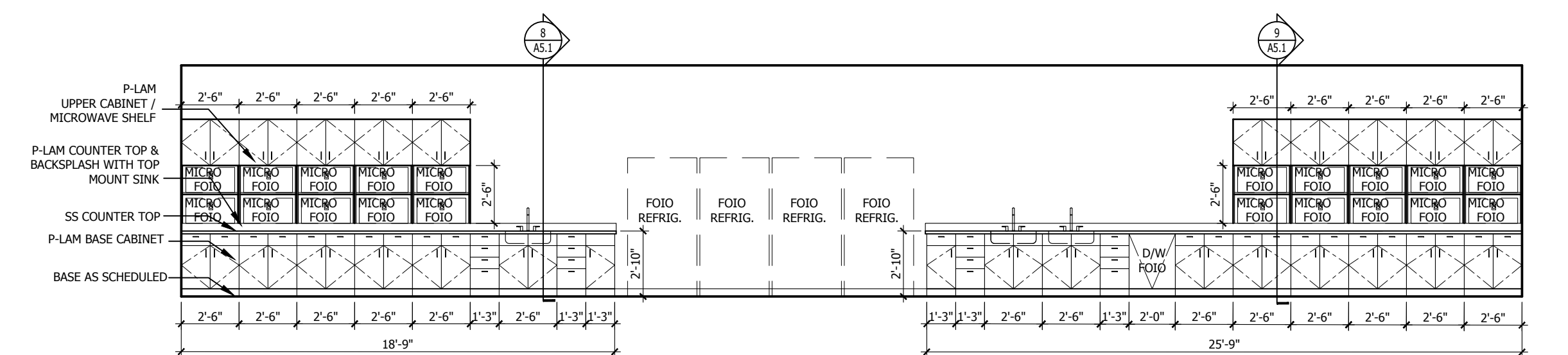


IDI LOGISTICS
840 APOLLO STREET, SUITE 343
EL SEGUNDO, CA 90245

RED DOT OFFICE TI

2504 EAST MAIN AVENUE
PUYALLUP, WA 98372

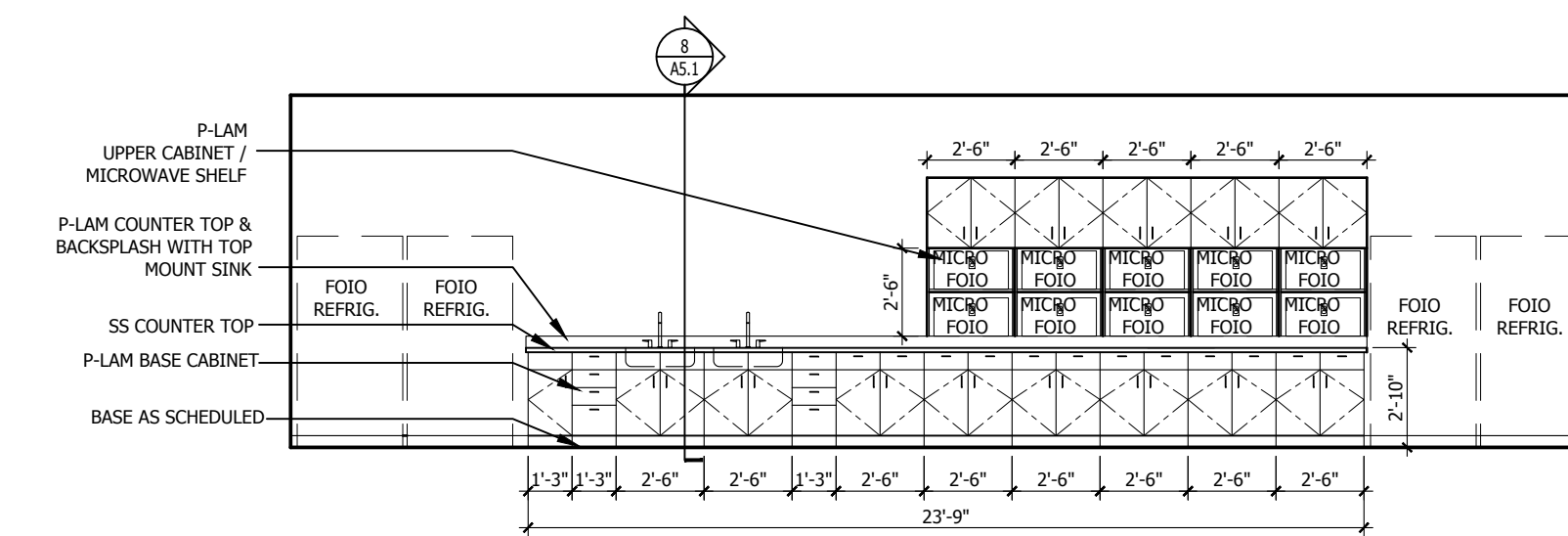
Description: No: Date:
PERMIT SUBMITTAL 5/17/2022



BREAKROOM ELEVATIONS

3/16" = 1'-0"

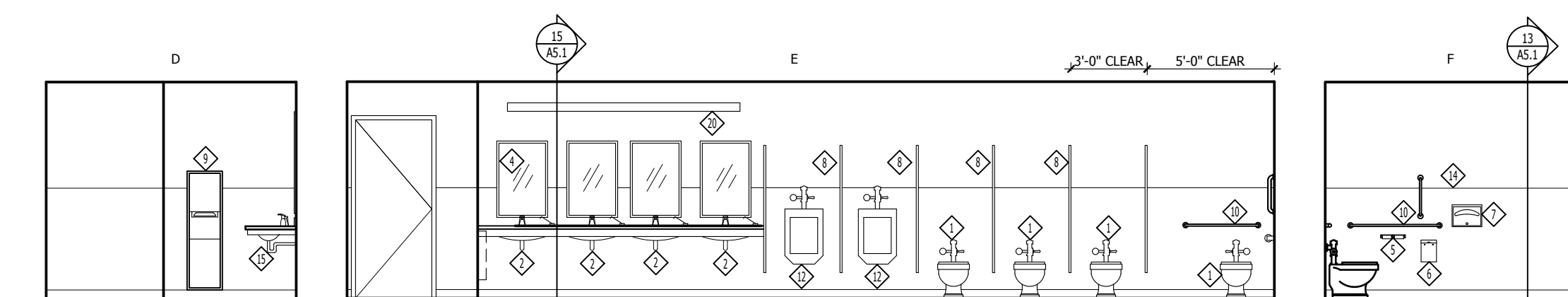
SEE AN-3 FOR MOUNTING HEIGHTS AND RELATIONSHIPS



BREAKROOM ELEVATIONS

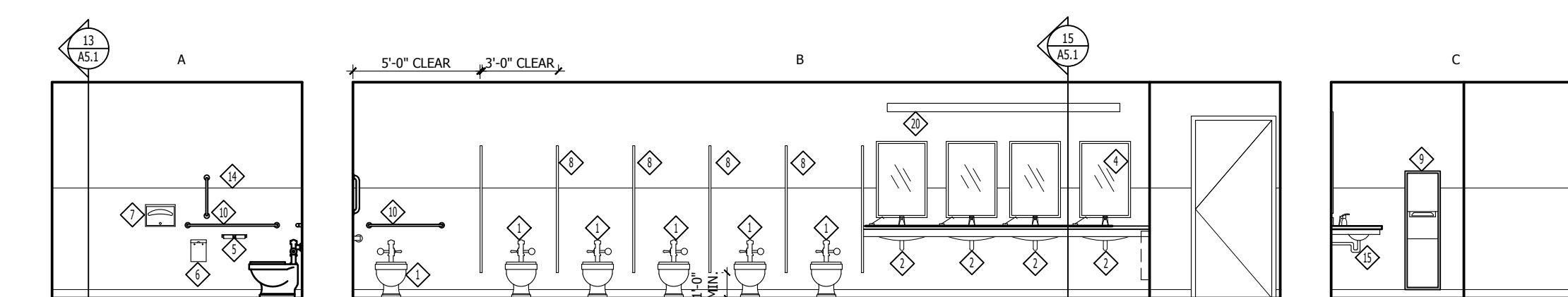
3/16" = 1'-0"

SEE AN-3 FOR MOUNTING HEIGHTS AND RELATIONSHIPS



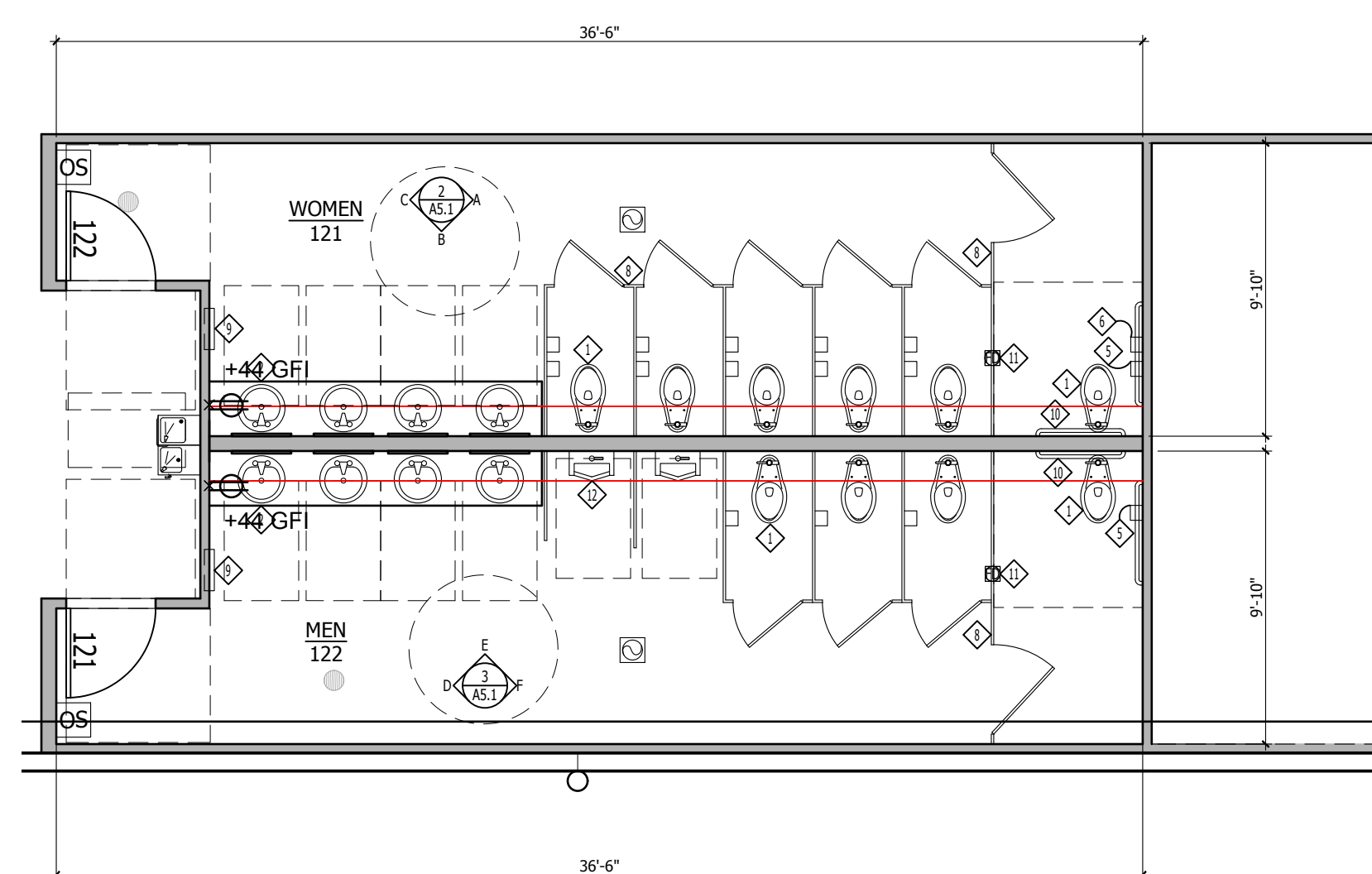
RESTROOM ELEVATION- MENS

3/16" = 1'-0"



RESTROOM ELEVATIONS- WOMENS

3/16" = 1'-0"



ENLARGED TOILET ROOMS

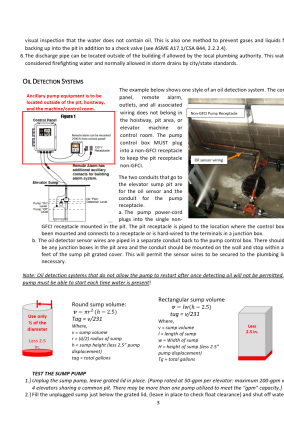
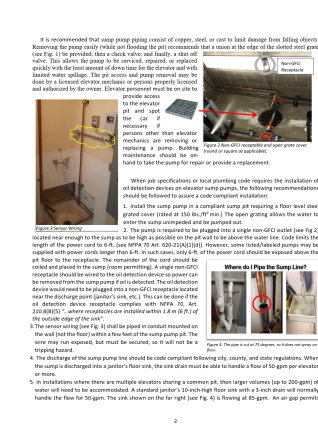
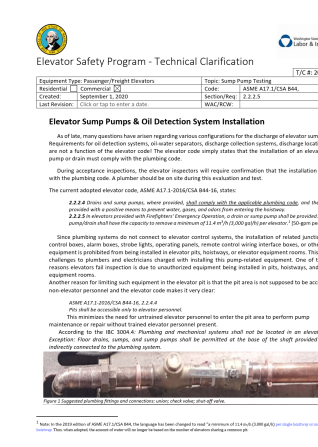
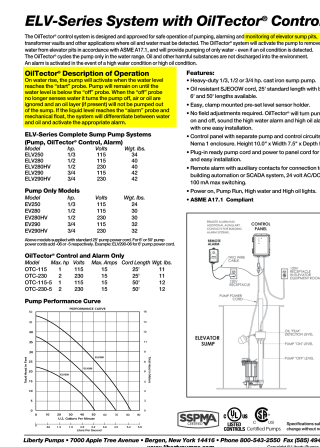
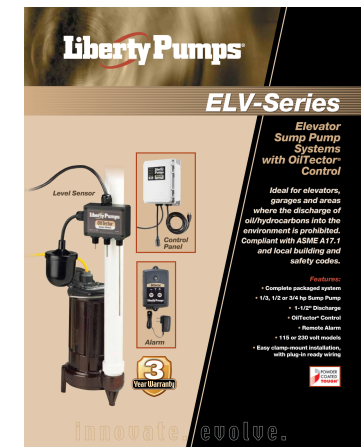
3/16" = 1'-0"

PRCT120220873

INTERIOR ELEVATIONS & DETAILS

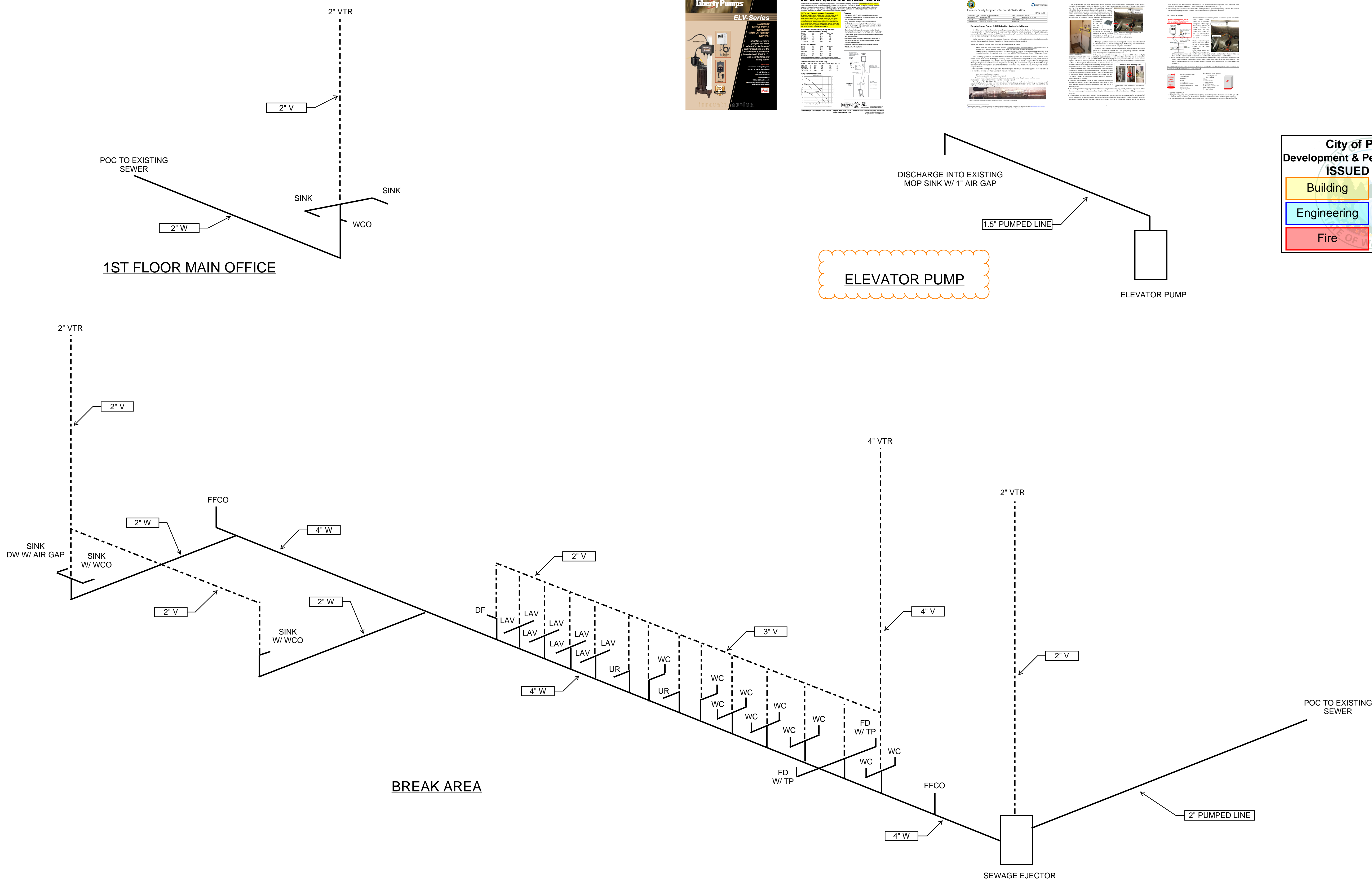
Proj. No: 21.0000440.000 Reviewed By:

A5.1



City of Puyallup
Development & Permitting Services
ISSUED PERMIT

Building	Planning
Engineering	Public Works
Fire	Traffic



General Notes

STATE MECHANICAL
8706 S 22ND ST
KENT WA 98031

SEWER PLAN

No.	Revision/Issue	Date
1	PLAN REVIEW	11/2/21

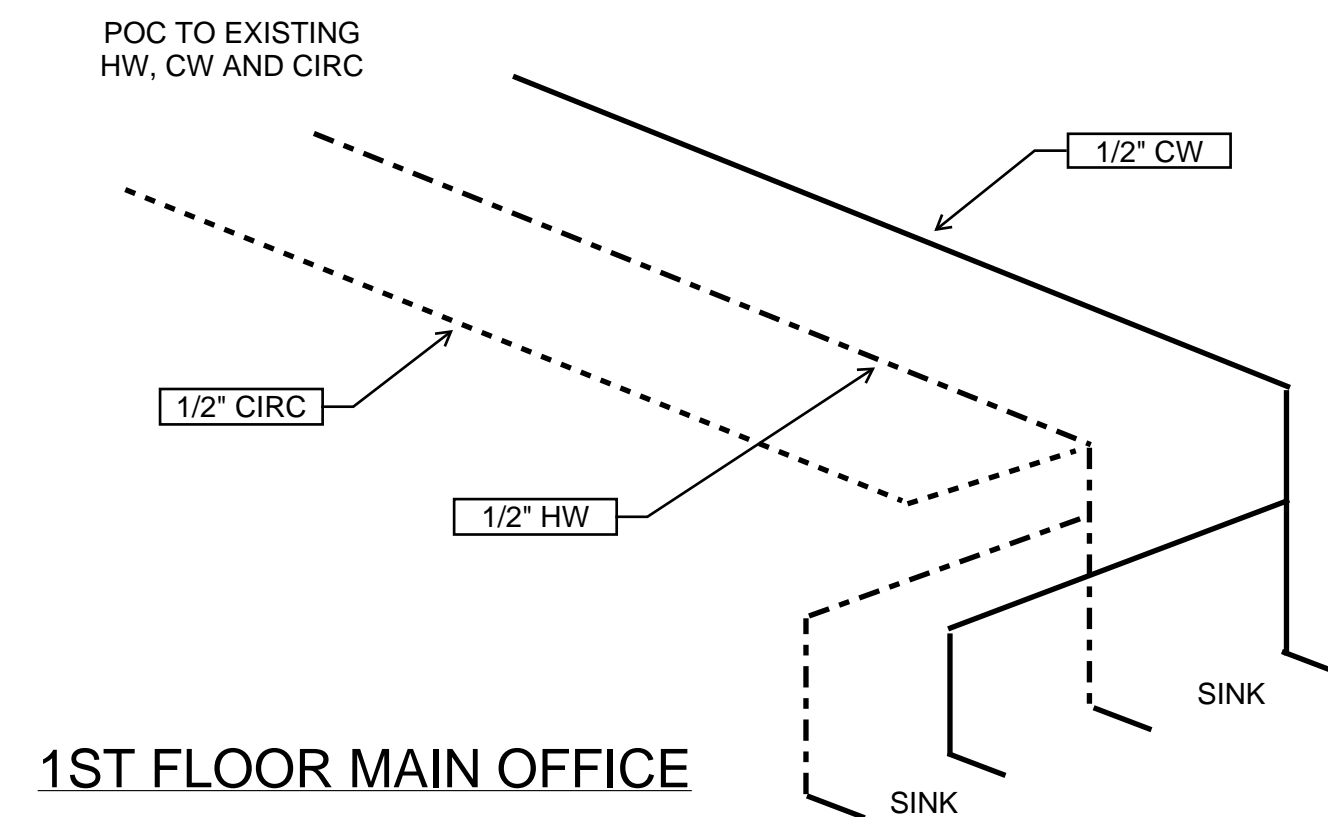
Firm Name and Address
STATE MECHANICAL
8706 S 22ND ST
KENT, WA 98031

Project Name and Address
RED DOT OFFICE TI

2504 EAST MAIN AVENUE
PUYALLUP, WA 98372

Project	IDS RED DOT	Sheet	P1.0
Date	6-15-22		
Scale	NONE		

PRCTI20220873



1ST FLOOR MAIN OFFICE

HOLMEN TI PLUMBING FIXTURE SCHEDULE										
FIXTURE	QTY	DESCRIPTION	PIPE SIZES				FIXTURE UNITS			
			COLD	HOT	WASTE	VENT	WATER VAULE	WATER TOTAL	WASTE VALUE	WASTE TOTAL
Water Closet	10	Kohler Floor Mount / Flush Valve	1"	*	3"	2"	40/30/20/15	155	4	40
Urinal	2	Kohler K-5016-ET Urinal	3/4"	*	2"	1-1/2"		35	2	4
Lavatory	8	ProFlow Deck Mount / ProFlo Lav Faucets	1/2"	1/2"	2"	1-1/2"	1	8	1	8
Sink	5	25x21 Single Bowl SS Sink	1/2"	1/2"	2"	1-1/2"	1.5	7.5	2	10
Drinking Fountain	1	Elkay EZSTL8LC	1/2"	*	2"	1-1/2"	0.5	0.5	0.5	0.5
Floor Drain	2	Sioux Chief 863-325 NRT	1/2"	*	2"	1-1/2"	0	0	0	0
Hot Water Tank	1	AO Smith ENT-50 50gal 4.5Kw 240v	3/4"	3/4"	*	*	0	0	0	0
Dishwasher	1	FBO Residential type	*	1/2"	1.5"	1.5"	1.5	1.5	1.5	1.5
Elevator Pump	1	Liberty Pump ELV with oiltecter control	*	*	1.5"	*	*	*	*	*
Sewage Ejector Pump	1	Liberty Pump D3600 Duplex Grinder Pumps	*	*	2"	2"	*	*	*	*
							1.5			64

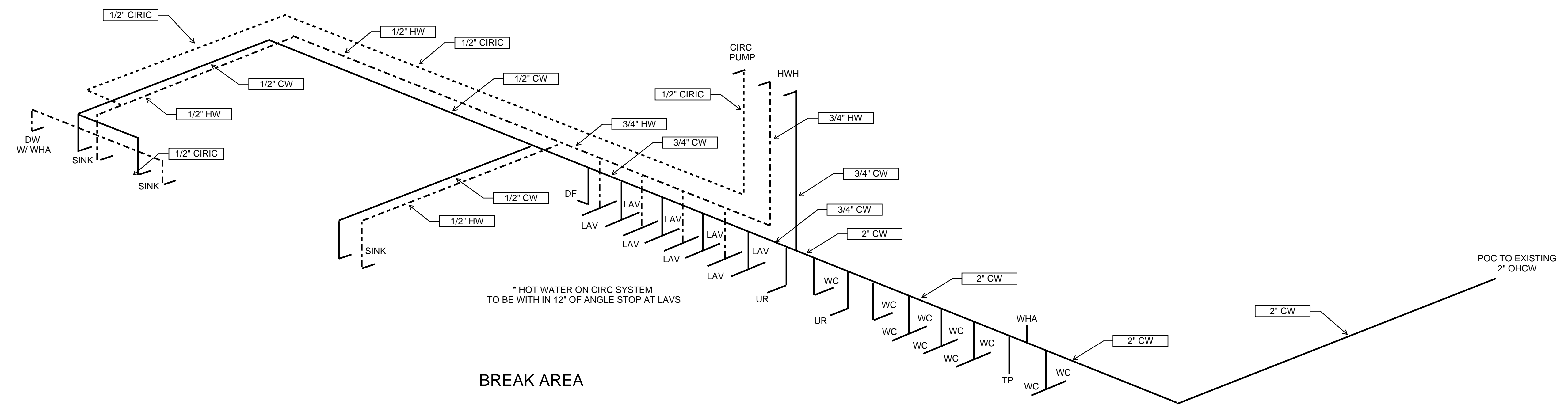
WATER PIPE SIZE (SIZED PER UPC 2012 TABLE 610.4) 2" WATER METER @ 40-60 PSI
 ALL DOMESTIC WATER PIPING WILL BE INSULATED IN ACCORDANCE WITH WASHINGTON STATE ENERGY CODE (613.0)
 WASTE PIPE SIZE (SIZED PER UPC 2012 TABLE 702.1)

City of Puyallup
 Development & Permitting Services
ISSUED PERMIT

Building	Planning
Engineering	Public Works
Fire	Traffic

STATE MECHANICAL
 8706 S 22ND ST
 KENT WA 98031

WATER PLAN



* HOT WATER ON CIRC SYSTEM TO BE WITH IN 12" OF ANGLE STOP AT LAVS

BREAK AREA

No.	Revision/Issue	Date
1	PLAN REVIEW	11/2/21

Firm Name and Address
 STATE MECHANICAL
 8706 S 22ND ST
 KENT, WA 98031

Project Name and Address
RED DOT OFFICE TI

 2504 EAST MAIN AVENUE
 PUYALLUP, WA 98372

Project	IDS RED DOT	Sheet	P2.0
Date	6-15-22		
Scale	NONE		

PRCTI20220873

General Notes

D3600-SERIES

Liberty Pumps
A Family and Employee Owned Company

Factory Assembled
2 hp Grinder Pumps
36" Diameter System
2" Discharge

- Features**
- Integral check valves
 - QuickTree® pre-mounted float switch system for pump control and alarm
 - 4" Inlet hub with rubber pipe seal
 - Factory pre-assembled guide rail system
 - Galvanized guide rail piping (stainless optional)
 - Factory pre-assembled Schedule 80 PVC discharge piping with ball valves
 - Fiberglass basin with anti-floatation collar
 - Standard green fiberglass cover, solid (optional black steel, solid)
 - All stainless-steel supports and brackets pre-mounted
 - NEMA 4X junction box for electrical connections, pre-mounted
 - Stainless-steel chain for pump lift-out
 - *Other custom basin sizes available consult factory



Available Heights
46"
60"
72"
84"
98"
120"



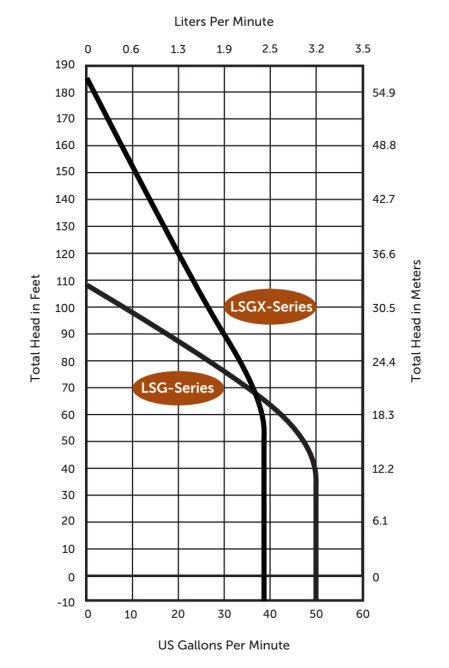
innovate. evolve.

D3600-Series

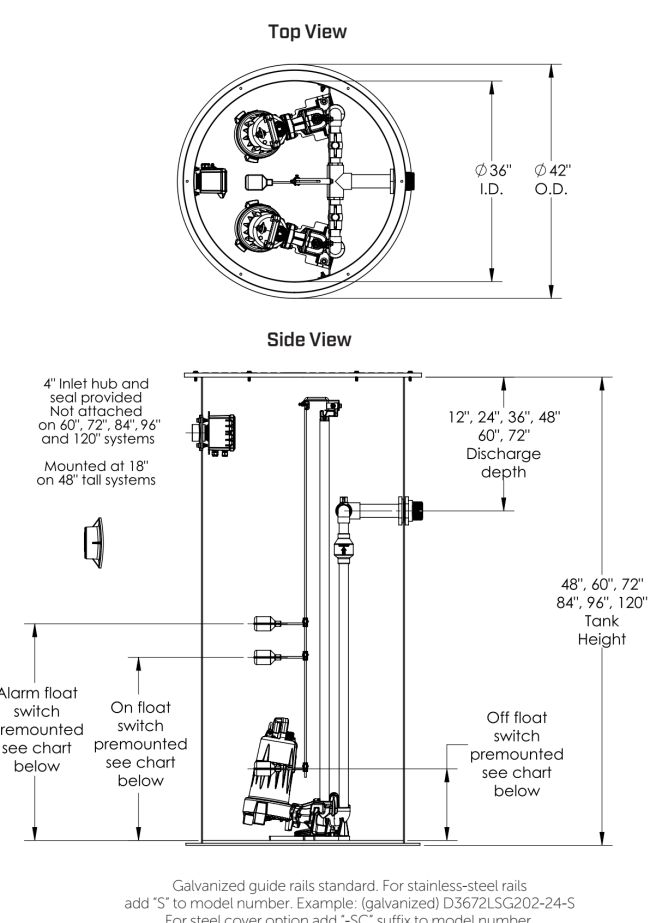
Features

- 2 hp Grinder pumps
- Choose from single stage LSG or 2-stage LSGX-Series pumps
- Available in a wide range of voltages
- 2" Discharge
- 25' Power cable length

Performance Curves



Dimensional Data



Factory Set Control Levels

MODEL	OFF LEVEL	ON LEVEL	ALARM LEVEL	VOLUME PER PUMP CYCLE	TOTAL BASIN CAPACITY
D3648	13" (33 cm)	25" (64 cm)	31" (79 cm)	53 gal (201 L)	211 gal (799 L)
D3660	13" (33 cm)	28" (71 cm)	34" (86 cm)	66 gal (250 L)	264 gal (999 L)
D3672	13" (33 cm)	31" (79 cm)	37" (94 cm)	79 gal (299 L)	317 gal (1200 L)
D3684	13" (33 cm)	34" (86 cm)	40" (102 cm)	92 gal (348 L)	370 gal (1400 L)
D3696	13" (33 cm)	37" (94 cm)	43" (109 cm)	106 gal (401 L)	423 gal (1601 L)
D36120	13" (33 cm)	43" (109 cm)	49" (124 cm)	132 gal (500 L)	529 gal (2002 L)

Choice of Panel... AE-Series or IP-Series



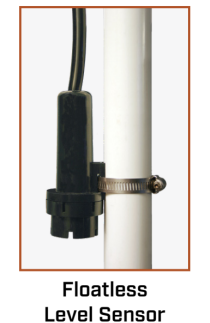
AE-Series Panels - (Standard)

- Provide reliable alternating operation.
- Features**
- HOA switch
 - NEMA 4X enclosure
 - Circuit breakers
 - Visual and audible alarm
 - Pump run indicator lights
 - Auxiliary contacts
 - Three level control float switches



IP-Series™ Panels - (Optional)

- IP-Series control panels incorporate the latest programmable pump features through a simple, easy-to-use touchpad on the inner door. Now pump programming and system monitoring is easier than ever.
- Features**
- NEMA 4X weatherproof enclosure for indoor or outdoor mounting
 - Floatless level sensor is compact and eliminates multiple wide-angle float switches for controlling pump
 - Redundant "ALARM" float switch included for added security
 - Easy-to-use touchpad for programming pump on/off levels and alarm level in inches or centimeters
 - Inner panel door provides increased safety
 - Separate control and alarm fuses
 - Digital display board for system monitoring
 - Alarm beacon and horn provide audio/visual warning of alarm condition
 - Test/Normal/Silence switch
 - Auxiliary contacts
 - Panel is field convertible for either demand dose or timed dose applications



D3600-Series

36" diameter fiberglass basin available in heights of 48", 60", 72", 84", 96", and 120". Systems listed below are shipped with a standard AE-Series control panel. To upgrade to an IP-Series panel add "IP" suffix to the above model number. Example: D3672LSC202-24-IP. See AE-Series or IP-Series literature for complete specifications.

MODEL	VOLTS	PHASE	WEIGHT	STANDARD PANEL	OPTIONAL PANEL IP-SERIES
D3648 - 36" x 48" Basin (Discharge depth is 12" from top of basin)					
D3648LSC200-C	208/230	1	470 lbs	AE24H-3	IPD-24H
D3648LSC202-C	208/230	1	470 lbs	AE24HC-3-3	IPD-24HC
D3648LSC203	208/230	3	470 lbs	AE24H-3-3	IPD-24HC
D3648LSC204	440-480	3	470 lbs	AE34-3-171	IPD-34-171
D3648LSC205	575	3	470 lbs	AE34-3-161	IPD-34-161
D3648LSC202C	208-230	1	482 lbs	AE24H-3	IPD-24H
D3648LSC202-C	208-230	1	482 lbs	AE24HC-3-3	IPD-24HC
D3648LSC203	208/230	3	482 lbs	AE34-3-161	IPD-34-161
D3648LSC204	440-480	3	482 lbs	AE34-3-171	IPD-34-171
D3648LSC205	575	3	482 lbs	AE34-3-161	IPD-34-161
D3660 - 36" x 60" Basin (Discharge depth is available in 24" or 36" from top of basin. Add -24 or -36 to model when ordering)					
D3660LSC200-C	208/230	1	480 lbs	AE24H-3	IPD-24H
D3660LSC202-C	208/230	1	480 lbs	AE24HC-3-3	IPD-24HC
D3660LSC203	208/230	3	480 lbs	AE34-3-161	IPD-34-161
D3660LSC204	440-480	3	480 lbs	AE34-3-171	IPD-34-171
D3660LSC205	575	3	480 lbs	AE34-3-161	IPD-34-161
D3660LSC202C	208-230	1	502 lbs	AE24H-3	IPD-24H
D3660LSC202C-36	208-230	1	502 lbs	AE24HC-3-3	IPD-24HC
D3660LSC203	208/230	3	511 lbs	AE34-3-161	IPD-34-161
D3660LSC204	440-480	3	511 lbs	AE34-3-171	IPD-34-171
D3660LSC205	575	3	511 lbs	AE34-3-161	IPD-34-161
D3672 - 36" x 72" Basin (Discharge depth is available in 24", 36", or 48" from top of basin. Add -24, -36, or -48 to model when ordering)					
D3672LSC200-C	208/230	1	510 lbs	AE24H-3	IPD-24H
D3672LSC202-C	208/230	1	510 lbs	AE24HC-3-3	IPD-24HC
D3672LSC203	208/230	3	524 lbs	AE34-3-161	IPD-34-161
D3672LSC204	440-480	3	524 lbs	AE34-3-171	IPD-34-171
D3672LSC205	575	3	524 lbs	AE34-3-161	IPD-34-161
D3672LSC202C	208-230	1	527 lbs	AE24H-3	IPD-24H
D3672LSC202C-36	208-230	1	527 lbs	AE24HC-3-3	IPD-24HC
D3672LSC203	208/230	3	539 lbs	AE34-3-161	IPD-34-161
D3672LSC204	440-480	3	539 lbs	AE34-3-171	IPD-34-171
D3672LSC205	575	3	539 lbs	AE34-3-161	IPD-34-161
D3672LSC202C-48	208-230	1	552 lbs	AE24H-3	IPD-24H
D3672LSC202C-48-36	208-230	1	552 lbs	AE24HC-3-3	IPD-24HC
D3672LSC203	208/230	3	558 lbs	AE34-3-161	IPD-34-161
D3672LSC204	440-480	3	558 lbs	AE34-3-171	IPD-34-171
D3672LSC205	575	3	558 lbs	AE34-3-161	IPD-34-161
D3684 - 36" x 84" Basin (Discharge depth is available in 24", 36", 48", or 60" from top of basin. Add -24, -36, -48, or -60 to model when ordering)					
D3684LSC200-C	208/230	1	540 lbs	AE24H-3	IPD-24H
D3684LSC202-C	208/230	1	540 lbs	AE24HC-3-3	IPD-24HC
D3684LSC203	208/230	3	549 lbs	AE34-3-161	IPD-34-161
D3684LSC204	440-480	3	549 lbs	AE34-3-171	IPD-34-171
D3684LSC205	575	3	549 lbs	AE34-3-161	IPD-34-161
D3684LSC202C	208-230	1	552 lbs	AE24H-3	IPD-24H
D3684LSC202C-36	208-230	1	552 lbs	AE24HC-3-3	IPD-24HC
D3684LSC203	208/230	3	561 lbs	AE34-3-161	IPD-34-161
D3684LSC204	440-480	3	561 lbs	AE34-3-171	IPD-34-171
D3684LSC205	575	3	561 lbs	AE34-3-161	IPD-34-161
D3696 - 36" x 96" Basin (Discharge depth is available in 24", 36", 48", 60", or 72" from top of basin. Add -24, -36, -48, -60, or -72 to model when ordering)					
D3696LSC200-C	208/230	1	560 lbs	AE24H-3	IPD-24H
D3696LSC202-C	208/230	1	560 lbs	AE24HC-3-3	IPD-24HC
D3696LSC203	208/230	3	574 lbs	AE34-3-161	IPD-34-161
D3696LSC204	440-480	3	574 lbs	AE34-3-171	IPD-34-171
D3696LSC205	575	3	574 lbs	AE34-3-161	IPD-34-161
D3696LSC202C	208-230	1	577 lbs	AE24H-3	IPD-24H
D3696LSC202C-36	208-230	1	577 lbs	AE24HC-3-3	IPD-24HC
D3696LSC203	208/230	3	586 lbs	AE34-3-161	IPD-34-161
D3696LSC204	440-480	3	586 lbs	AE34-3-171	IPD-34-171
D3696LSC205	575	3	586 lbs	AE34-3-161	IPD-34-161
D36120 - 36" x 120" Basin (Discharge depth is available in 24", 36", 48", 60", or 72" from top of basin. Add -24, -36, -48, -60, or -72 to model when ordering)					
D36120LSC200-C	208/230	1	632 lbs	AE24H-3	IPD-24H
D36120LSC202-C	208/230	1	632 lbs	AE24HC-3-3	IPD-24HC
D36120LSC203	208/230	3	646 lbs	AE34-3-161	IPD-34-161
D36120LSC204	440-480	3	646 lbs	AE34-3-171	IPD-34-171
D36120LSC205	575	3	646 lbs	AE34-3-161	IPD-34-161
D36120LSC202C	208-230	1	644 lbs	AE24H-3	IPD-24H
D36120LSC202C-36	208-230	1	644 lbs	AE24HC-3-3	IPD-24HC
D36120LSC203	208/230	3	653 lbs	AE34-3-161	IPD-34-161
D36120LSC204	440-480	3	653 lbs	AE34-3-171	IPD-34-171
D36120LSC205	575	3	653 lbs	AE34-3-161	IPD-34-161

General Notes

STATE MECHANICAL
8706 S 22ND ST
KENT WA 98031

SEWER EJECTOR DETAIL

City of Puyallup Development & Permitting Services ISSUED PERMIT

Building	Planning
Engineering	Public Works
Fire	Traffic

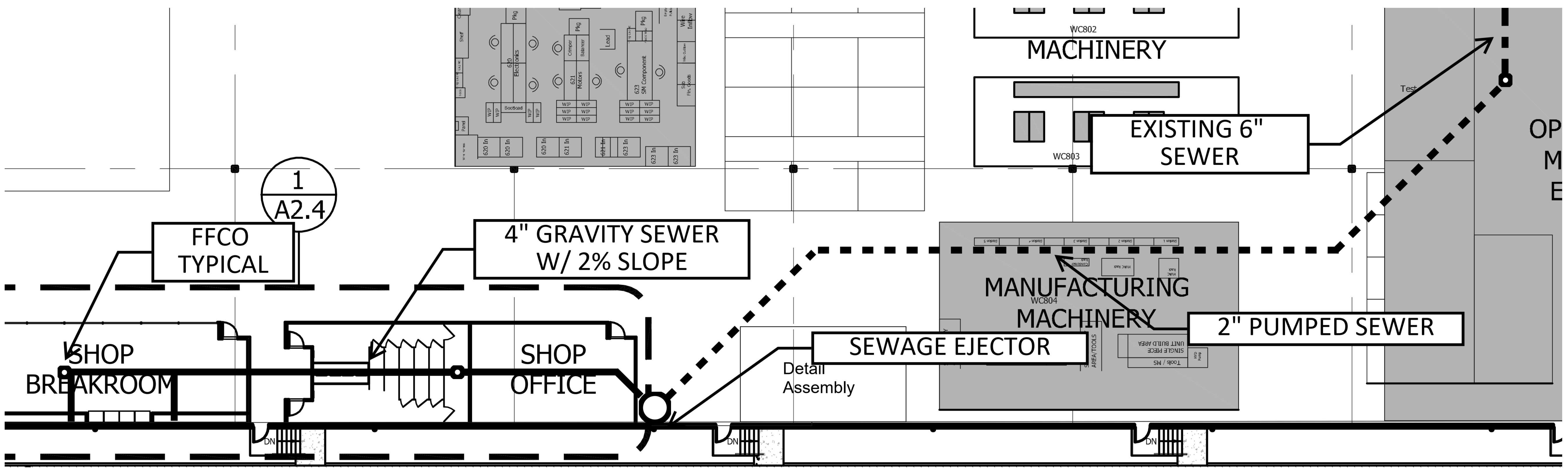
1	PLAN REVIEW	11/2/21
No.	Revision/Issue	Date

Firm Name and Address
STATE MECHANICAL
8706 S 22ND ST
KENT, WA 98031

Project Name and Address
RED DOT OFFICE TI

2504 EAST MAIN AVENUE
PUYALLUP, WA 98372

Project	IDS RED DOT	Sheet	
Date	6-15-22		P3.0
Scale	NONE		



SEE P1.0 AND P2.0 FOR ISOMETRIC DRAWINGS

PRCT120220873