

GENERAL FIRE ALARM SYSTEM NOTES

- FIRE ALARM SYSTEM IS POWER LIMITED. METALLIC RACEWAY SHALL BE USED IF REQUIRED BY CODE, SPECIFICATIONS AND CONTRACT DOCUMENTS OR A.H.I.
- ALL RACEWAYS MUST BE FREE OF MOISTURE
- REFER TO JOHNSON CONTROLS FIRE ALARM DATA SHEETS FOR PROPER TYPE AND SIZES OF REQUIRED DEVICE MOUNTING ELECTRICAL BOXES. ELECTRICAL CONTRACTOR IS RESPONSIBLE FOR PROPER INSTALLATION OF ALL DEVICES.
- AC VOLTAGE IS NOT PERMITTED IN THE SAME RACEWAY AS FIRE ALARM WIRING.
- UNRELATED (NON-FIRE ALARM) WIRING SHALL NOT BE IN THE SAME RACEWAY AS FIRE ALARM WIRING.
- ALL CONTRACTOR FIELD WIRING MUST ENTER ALARM CONTROL PANEL BACKBOX FOLLOWING POWER-LIMITED AND NON POWER-LIMITED WIRING REQUIREMENTS. REFER TO INSTALLATION INSTRUCTIONS FOR MORE INFORMATION.
- ZONE CIRCUITS AND SIGNAL CIRCUITS ARE ELECTRICALLY SUPERVISED. BRANCH CIRCUITS SHALL BE LOOPED TO MAINTAIN INTEGRITY OF SUPERVISED CIRCUITS--TAPPING OF ZONE CIRCUITS AND SIGNAL CIRCUITS IS NOT PERMITTED.
- REFER TO FACP MODULE DIAGRAMS, INCLUDED WITH FACP, FOR SPECIFICATIONS AND INFORMATION ON INDIVIDUAL PANEL MODULES. VERIFY ALL CONNECTIONS WITH A JOHNSON CONTROLS FIELD TECHNICAL REPRESENTATIVE PRIOR TO TERMINATION.
- ALL FIRE ALARM WIRING SHALL TEST FREE OF OPENS, SHORTS AND GROUNDS.
- ALL WIRING SHALL BE LABELED AND TAGGED
- ELECTRICAL CONTRACTOR IS RESPONSIBLE FOR INSTALLATION AND MAKING ALL FINAL CONNECTIONS PRIOR TO JOB CHECKOUT AND FINAL TESTING BY A JOHNSON CONTROLS FIELD TECHNICAL REPRESENTATIVE. CALL A MINIMUM OF 5 DAYS IN ADVANCE TO SCHEDULE A JOHNSON CONTROLS TECHNICIAN AT (206) 777-4860.
- ELECTRICAL CONTRACTOR IS RESPONSIBLE FOR MAKING ALL ARRANGEMENTS FOR INSPECTION, TEST AND CERTIFICATION OF THE FIRE ALARM SYSTEM BY ALL APPROPRIATE AUTHORITIES.
- UPON WRITTEN REQUEST, JOHNSON CONTROLS WILL PROVIDE WRITTEN INSTRUCTIONS REGARDING THE APPROPRIATE WIRE/CABLE FOR INSTALLATION OF THE EQUIPMENT/SYSTEM(S) IDENTIFIED IN THESE DRAWINGS. JOHNSON CONTROLS SHALL NOT BE RESPONSIBLE FOR PROBLEMS OR DAMAGES RESULTING FROM THE USE OF WIRE/CABLE OTHER THAN THAT WHICH HAS BEEN IDENTIFIED IN WRITING BY JOHNSON CONTROLS FOR A SPECIFIC APPLICATION.
- ALL WIRING SHALL MEET ALL APPLICABLE NATIONAL ELECTRIC CODE ARTICLES FOR FIRE ALARM AND LOW VOLTAGE WIRING.

T.I. ARCHITECT: CLARK KJOS ARCHITECTS LLC
PORTLAND, OR

T.I. FIRE ALARM SYSTEM DESIGNED BY: JOHNSON CONTROLS
SEATTLE, WA

T.I. FIRE ALARM SYSTEM INSTALLED BY: PRECISION ELECTRIC GROUP
REDMOND, WA

EQUIPMENT FOR FIRE ALARM SYSTEM SUPPLIED BY: JOHNSON CONTROLS
SEATTLE, WA

WASHINGTON STATE ELECTRICAL CONTRACTORS NUMBER: JOHNSCP831PR

* THESE DRAWINGS DO NOT SUPERSEDE THE CONTRACT DRAWINGS AND SPECIFICATIONS. THEY ARE INTENDED AS A SUPPLEMENT ONLY AND MUST BE USED IN CONJUNCTION WITH THE CONTRACT DOCUMENTS. THEY DO NOT MODIFY THE CONTRACTORS OBLIGATIONS TO CONFORM TO THE PROJECTS ORIGINAL DESIGN CRITERIA.

SCOPE OF WORK:

TENANT IMPROVEMENT ON FIRST FLOOR BODY HOLDING ROOMS. DEMO EXISTING DEVICES AS INDICATED ON DEMO PAGE AND INSTALL NEW DEVICES AS SHOWN ON FA-F-01.

ELECTRICAL CONTRACTOR ASBUILTS

ELECTRICAL CONTRACTOR IS RESPONSIBLE FOR PROVIDING JOHNSON CONTROLS WITH ACCURATE REDLINED DRAWINGS. DRAWINGS SHALL BE REDLINED AS NECESSARY TO SHOW THE FOLLOWING:

- DEVICE LOCATIONS - ADDS/DELETES.
- CIRCUIT NUMBERS - ADDRESSABLE/SIGNAL/AUXILIARY/ZONE.
- WIRE/CONDUIT - ACCURATE ROUTING.
- WIRE FILL - USING WIRE CODE.
- EOL RESISTOR LOCATIONS.

JOHNSON CONTROLS WILL PROVIDE (UPON REQUEST) A BLANK SET OF FLOOR PLANS TO BE REDLINED. JOHNSON CONTROLS WILL INCORPORATE ALL REDLINED CHANGES INTO THE RECORD AUTOCAD SET OF DRAWINGS.

ELECTRICAL CONTRACTOR

ELECTRICAL CONTRACTOR IS TO SCHEDULE A PRELIMINARY SITE MEETING WITH A JOHNSON CONTROLS TECHNICAL REPRESENTATIVE. THESE MEETINGS ARE FOR REVIEWING EQUIPMENT LISTS, INSTALLATION PROCEDURES, AND PROVIDING ANSWERS TO QUESTIONS RELATIVE TO SYSTEM INSTALLATION.

PLEASE ALLOW A MINIMUM OF FIVE WORKING DAYS ADVANCE NOTICE TO SCHEDULE A TECHNICAL REPRESENTATIVE.

TO SCHEDULE A MEETING PLEASE CONTACT OUR SERVICE DEPARTMENT AT (206) 777-4860.

DO NOT USE FIRE ALARM CABINET AS TERMINAL CABINET

MONITORING COMPANY

NORTHWEST AMS
1-877-870-0910

SERVICE COMPANY

SUTHERLAND SECURITY
3991 TANWAX CT. E.
EATONVILLE, WA. 98328

BATTERY CALCULATIONS - Miniplex Transponder 2nd Flr Electrical Rm R281

Does the system have an Emergency Generator that meets NEC 700.017?
Yes X no

How many hours of battery standby are required?
X 4 ___ 24 ___ 48 ___ 60 (4 hours minimum w/ Emergency Generators)

Qty	Part #	Description	Standby Current (A)	Total Standby (A)	Alarm Current (A)	Total Alarm (A)
1	4100-8019	Miniplex Transponder	0.3450	0.3450	0.6850	0.6850
1	4100-3102	Mapnet Card	0.0000	0.0000	0.2750	0.2750
4	2088-9608	Door Holder	0.0150	0.0600	1.6650	6.6600
3	2190-9163	Control ZAM	0.0100	0.0300	0.0400	0.1200
4	4098-9756	Duct Detector	0.0024	0.0096	0.0300	0.1200
5	2088-9008	Relay	0.0000	0.0000	0.0150	0.0750
1		Total Notification Current from Volt Drop	0.0000	0.0000	4.9190	4.9190
			Total Standby=		Total Alarm=	
			0.6996		12.8340	
					Time (Hrs)	
			Total Standby Current Required=		2.7984	
			0.6996		X	
					4.0000	
			Total Alarm Current Required=		3.2085	
			12.8340		X	
					0.2500	
			Total=		6.0069	
			20% Depletion Factor=		1.2014	
			Total Amp/Hour Required=		7.2083	
			Total Amp/Hour Batteries Provided=		(1) set	
					18.0000	

Signal Circuits - Miniplex Transponder	Current	Dist. (ft)	Voltage Drop
SIG27) ER Area	1.446	500	4.61
SIG28) 3rd Floor Interim	0.633	430	1.74
SIG29) 2nd Floor Imaging Dept. Reading	0.201	275	0.35
SIG30) 2nd Floor West Stat Lab	0.631	255	1.03
SIG31) Spare	0.000	0.00	0.00
SIG32) Spare	0.000	0.00	0.00
SIG33) 2nd Floor Praction	0.100	170	0.11
SIG34) 5th Floor Praction	0.130	200	0.17
SIG35) Spare	0.000	0.00	0.00
SIG36) Spare	0.000	0.00	0.00
SIG37) 2nd Floor Physician's Lounge	0.624	300	1.19
SIG39) 5th Floor Strobes	1.154	300	2.21
SIG40) Spare	0.000	0.00	0.00
SIG41) Spare	0.000	0.00	0.00
SIG42) Spare	0.000	0.00	0.00
SIG43) Spare	0.000	0.00	0.00
SIG44) Spare	0.000	0.00	0.00
Total	4.919		

NOTE:
-TAP ALL SPEAKERS AT 1/2 WATT.

FIRE ALARM CONTROL PANEL

ZONE SCHEDULE

- WEST ADDITION BASEMENT MANUAL STATION
- FIRST FLOOR CENTER WING MANUAL STATION
- SECOND FLOOR CENTER WING MANUAL STATION
- THIRD FLOOR CENTER WING MANUAL STATION
- FOURTH FLOOR CENTER MANUAL STATION
- PENTHOUSE CENTER WING MANUAL STATION
- SECOND FLOOR SOUTH WING MANUAL STATION
- GROUND FLOOR WEST ADDITION MANUAL STATION
- FIRST FLOOR WEST WING MANUAL STATION
- SECOND FLOOR WEST WING MANUAL STATION
- FIFTH FLOOR ACCOUNTING SOUTH WING MANUAL STATION
- PENTHOUSE WEST WING MANUAL STATION
- TELEPHONE ROOM PEDESTRIAN LINK
- FIRST FLOOR EAST WING MANUAL STATION
- SECOND FLOOR EAST WING MANUAL STATION
- THIRD FLOOR EAST WING MANUAL STATION
- PENTHOUSE NORTH EAST WING MANUAL STATION
- GROUND FLOOR NORTH WING MANUAL STATION
- SECOND FLOOR X-RAY DEPARTMENT EAST WING MANUAL STATION
- SECOND FLOOR EAST WING WATERFLOW
- SPARE
- WEST WING SPRINKLER VALVE TAMPER SWITCH
- FIRST FLOOR NORTH WING MANUAL STATION
- SECOND FLOOR NORTH WING MANUAL STATION

SPEAKER CIRCUITS

- FIRST FLOOR CENTER NORTH WING
- CHILD THERAPY
- GROUND FLOOR WEST WING
- FIRST FLOOR WEST WING
- SECOND FLOOR WEST WING
- FIRST, SECOND, THIRD & PENTHOUSE EAST WING
- SECOND, THIRD & PENTHOUSE CENTER WING/ SECOND, THIRD, FOURTH & FIFTH FLOORS SOUTH WING
- FOURTH FLOOR NORTH & CENTER WINGS
- THIRD FLOOR NORTH WING
- SECOND FLOOR NORTH WING
- FIRST FLOOR NORTH WING
- GROUND FLOOR NORTH WING

AUXILIARY CIRCUITS

- DOOR HOLDERS
- DETECTOR RESET
- WATERFLOW ZONE 19
- WATERFLOW ZONE 27
- WEST WING FANS
- CENTER & NORTH WING FANS
- EAST WING FANS
- SOUTH WING FANS
- SECURITY RADIO CODE RED ALARM
- SPARE
- CLOCK CORRECTION

MAPNET CHANNELS

- MAPNET CHANNEL #1
1-1 TO 1-76, 1-78, 1-79, 1-82 TO 1-86, 1-88 TO 1-114
- MAPNET CHANNEL #2
2-1 TO 2-123
- MAPNET CHANNEL #3
3-1, 3-3, 3-4, 3-6, 3-7, 3-10 TO 3-15, 3-26, 3-29 TO 3-46, 3-52 TO 3-73, 3-85 TO 3-103, 3-115, 3-116, 3-126, 3-127
- MAPNET CHANNEL #4
4-1 TO 4-91, 4-115 TO 4-127

STROBE CIRCUITS

- FOURTH FLOOR NORTH WING
- THIRD FLOOR NORTH WING
- SECOND FLOOR NORTH WING
- FIRST FLOOR EAST WING
- GROUND FLOOR NORTH WING
- ALL FLOORS EAST WING
- BASEMENT WEST WING
- GROUND FLOOR WEST WING
- FIRST FLOOR WEST WING
- SECOND FLOOR/PENTHOUSE WEST WING
- PENTHOUSE WEST WING
- ALL FLOORS EAST WING

SEQUENCE OF OPERATION

	SMOKE DETECTION	DUCT SMOKE DETECTION	SYSTEM TROUBLE	IMAGING SMOKE DETECTION	DUCT SMOKE DETECTION	NUTRITION SERVICES	FSD INCORRECT POSITION
ACTIVATION OF LOCAL ALARM AT FACP (LCD DISP. & AUDIBLE INDICATION)	X			X			
ACTIVATE AUDIBLE/VISIBLE DEVICES	X			X			
ACTIVATE LOCAL FAN SHUTDOWN	X	X		X	X		
RELEASE DOOR HOLDERS	X			X			
TRANSMIT ALARM SIGNAL TO CENTRAL STATION MONITOR VIA MAIN FACP	X			X			
TROUBLE INDICATION AT FACP			X			X	
TROUBLE INDICATION AT ANNUNCIATOR			X			X	
TRANSMIT TROUBLE SIGNAL TO CENTRAL STATION MONITOR VIA MAIN FACP			X			X	
SUPPRESSION RELEASE				X			
CLOSE FSD - NUTRITION SERVICES SHUTDOWN AHU-1 SUPPLY/EXHAUST(4-121/122)					X		
SUPERVISORY INDICATION AT FACP		X			X		
SUPERVISORY INDICATION AT ANNUNCIATOR		X			X		
TRANSMIT SUPERVISORY SIGNAL TO CENTRAL STATION MONITOR VIA MAIN FACP		X			X		

TRANSPONDER PANEL #1

STROBE CIRCUITS

- SECOND FLOOR NORTH EAST WING
- THIRD FLOOR SOUTH WING
- 2ND FLOOR IMAGING DEPT READING AREA
- FLOOR 2 SOUTH WING
- FLOOR 2 EAST WING NUC MED
- FLOOR 2 ATU
- PRE-ACTION SUPPRESSION RELEASE
- FLOOR 5 UPS ROOM PRE-ACTION
- SPARE
- FLOOR 5 STROBES
- SPARE

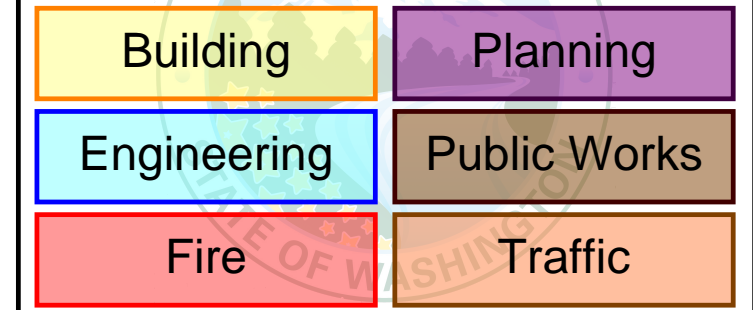
AUXILIARY CIRCUITS

- SPARE

MAPNET CHANNELS

- MAPNET CHANNEL #5
5-4 TO 5-6, 5-8 TO 5-23, 5-27, 5-31, 5-32
5-33 TO 5-54, 5-65, 5-70 TO 5-90
5-91 TO 5-96, 5-100 TO 5-122
- MAPNET CHANNEL #6
6-1 TO 6-48, 6-70 TO 6-93
- MAPNET CHANNEL #8
8-1 TO 8-4

City of Puyallup Development & Permitting Services ISSUED PERMIT



NOTES:

- FIRE ALARM DRAWINGS ARE SCHEMATIC ONLY.
- ALL CABLE SUBSTITUTIONS MUST BE APPROVED BY JOHNSON CONTROLS ENGINEERING IN WRITING.
- NOTE: MOUNT HORN/STROBES, SPEAKER/STROBES AND STROBES AT 80" TO BOTTOM OF DEVICE.
- NOTE: MOUNT PULL STATIONS AT 48" TO TOP OF DEVICE.
- ALL SHIELDS ON THE SAME IDNET CHANNEL OR SPEAKER CIRCUIT SHOULD BE TAPED TOGETHER AND BE FREE OF OPENS, SHORTS, AND GROUNDS.
- DO NOT EXCEED 2500 FT OUT TO FURTHEST DEVICE MAXIMUM 10,000 FT ON MAPNET CHANNEL.
- DRY CONTACT ONLY PROVIDED FOR DOOR HOLDERS, ROLL DOORS AND SMOKE/FIRE DAMPERS - POWER BY OTHERS.
- DUCT DETECTORS ARE NOT WEATHERPROOF. EC IS RESPONSIBLE FOR PROTECTING FROM ENVIRONMENTAL CONDITIONS (TEMPERATURE, MOISTURE, ETC.)

LEGEND

SYMBOL	DESCRIPTION	MODEL #	BACKBOX#
[Symbol]	SPEAKER/STROBE 15cdd * SUBSCRIPT INDICATES CIRCUIT #	4903-9356	4" SQ 2 1/8" DEEP W/ 1.5" EXT BY EC
[Symbol]	SPEAKER/STROBE 75cdd * SUBSCRIPT INDICATES CIRCUIT #	4903-9357	4" SQ 2 1/8" DEEP W/ 1.5" EXT BY EC
[Symbol]	SPEAKER/STROBE MULTICANDELA * SUBSCRIPT INDICATES CIRCUIT # & CANDELA SETTING	4906-9151	4" SQ 2 1/8" DEEP W/ 1.5" EXT BY EC
[Symbol]	SPEAKER/STROBE 30cdd * SUBSCRIPT INDICATES CIRCUIT # & CANDELA SETTING	4903-9197	4" SQ 2 1/4" DEEP W/ 1.5" EXT BY EC
[Symbol]	STROBE 15cdd * SUBSCRIPT INDICATES CIRCUIT #	4904-9331	4" SQ 1 1/2" DEEP BY EC
[Symbol]	STROBE 75cdd * SUBSCRIPT INDICATES CIRCUIT #	4904-9332	4" SQ 1 1/2" DEEP BY EC
[Symbol]	STROBE 110cdd * SUBSCRIPT INDICATES CIRCUIT #	4904-9333	4" SQ 1 1/2" DEEP BY EC
[Symbol]	STROBE MULTICANDELA * SUBSCRIPT INDICATES CIRCUIT # & CANDELA SETTING	4906-9101	4" SQ BY EC
[Symbol]	SPEAKER/STROBE MULTICANDELA * SUBSCRIPT INDICATES CIRCUIT # & CANDELA SETTING	4906-9153	4" SQ 2 1/8" DEEP W/ 1.5" EXT BY EC
[Symbol]	CEILING SPEAKER/STROBE * SUBSCRIPT INDICATES CIRCUIT # & CANDELA SETTING	4906-9154	4" SQ 2 1/8" DEEP W/ 1.5" EXT BY EC
[Symbol]	WEATHERPROOF SPEAKER/STROBE * SUBSCRIPT INDICATES CIRCUIT # & CANDELA SETTING	ET70WP-2475W-FW	IOB BY JCI
[Symbol]	CEILING STROBE, WHITE, MC * SUBSCRIPT INDICATES CIRCUIT # & CANDELA SETTING	4906-9104	SG BY EC
[Symbol]	CEILING SPEAKER * SUBSCRIPT INDICATES CIRCUIT #	4902-9721	4" SQ 2 1/2" DEEP W/ 1.5" EXT BY EC
[Symbol]	EXISTING SOLENOID	EXISTING	EXISTING
[Symbol]	EXISTING WATERFLOW SWITCH	EXISTING	EXISTING
[Symbol]	EXISTING TAMPER SWITCH	EXISTING	EXISTING
[Symbol]	EXISTING LOW AIR SWITCH	EXISTING	EXISTING
[Symbol]	MAINTENANCE DISCONNECT SWITCH	2080-9060	2-GANG 2 3/4" DEEP BY EC
[Symbol]	SOLENOID J-BOX	2081-9046	SOLENOID J-BOX
[Symbol]	SYNC CUBE	4905-9914	4" SQ 1 1/2" DEEP BY EC
[Symbol]	SMART SYNC CONTROL MODULE	4905-9938	4-11/16 SQ BOX BY EC 4905-9817 TRIM PLATE BY JCI
[Symbol]	ADAPTER MODULE	4905-9815 W/ 4905-9818 COVER	4" SQ W/SG BY EC
[Symbol]	ADDRESSABLE MANUAL STATION * SUBSCRIPT INDICATES MAPNET#	4909-9001	4" SQ W/SG BY EC
[Symbol]	ADDRESSABLE MANUAL STATION * SUBSCRIPT INDICATES MAPNET#	4099-9004	4" SQ W/SG BY EC
[Symbol]	SMOKE SENSOR AND BASE * SUBSCRIPT INDICATES MAPNET#	4098-9714 SENSOR 4" OCT BY EC	
[Symbol]	HEAT SENSOR AND BASE * SUBSCRIPT INDICATES MAPNET#	4098-9733 SENSOR 4" OCT BY EC	
[Symbol]	DUCT DETECTOR * SUBSCRIPT INDICATES MAPNET#	4098-9756	SELF-CONTAINED
[Symbol]	IN-DUCT DETECTOR * SUBSCRIPT INDICATES MAPNET#	4098-9751 W/ 4098-9714 SENSOR	SELF-CONTAINED
[Symbol]	REMOTE LED w/ TEST	2098-9806	SG BY EC
[Symbol]	X-RAY DUCT SENSOR * SUBSCRIPT INDICATES SERVICE ADDRESS	4098-XAD-110 W/ ACCESSORIES(SEE DATASHEET)	12.625"H X 10.1875"W X 6.5"D
[Symbol]	DUCT DETECTOR RELAY	4098-9843	4" SQ 2 1/8" DEEP W/ COVER BY EC
[Symbol]	REMOTE RELAY	2088-9010	SELF-CONTAINED
[Symbol]	MR 101/C RELAY	2088-9008	SELF-CONTAINED
[Symbol]	INDIVIDUAL ADDRESSABLE MODULE	4090-9001	SINGLE GANG 2 1/2" DEEP BY EC
[Symbol]	ADDRESSABLE SIGNAL IAM	4090-9007	4" SQ 2 1/8" DEEP BY EC
[Symbol]	DUAL CONTACT RELAY IAM	4090-9008	4" SQ 2 1/8" DEEP BY EC
[Symbol]	RELAY IAM	4090-9002	4" SQ 2 1/8" DEEP BY EC
[Symbol]	SMOKE/FIRE DAMPER	BY OTHERS	BY OTHERS
[Symbol]	CONTROL ZAM * SUBSCRIPT INDICATES MAPNET#	2190-9163	4" SQ 2 1/2" DEEP W/ 1.5" EXT BY EC
[Symbol]	SIGNAL ZAM * SUBSCRIPT INDICATES MAPNET#	2190-9161	4 11/16" BY 2 1/8" DEEP EXT BY EC
[Symbol]	DOOR HOLDER	2088-9608	SG BY EC
[Symbol]	J-BOX	PROVIDED BY EC	
[Symbol]	SYNCH MODULE	4905-9938	4" SQ 2 1/8" DEEP BY EC
[Symbol]	J-BOX	PROVIDED BY EC	
[Symbol]	MINIPLX TRANSPONDER	4100	52.125"H X 25.75"W X 6.75"D
[Symbol]	4100U TRANSPONDER	4100-9600	56"H X 24"W X 8.375"D
[Symbol]	ALTRONIC PWR SUPPLY	AL1024ULACMBJ	BY OTHERS
[Symbol]	AES RADIO	7788F-ULP	BY OTHERS
[Symbol]	SUPERVISED IAM	4090-9001	4" SQ 2 1/8" DEEP BY EC
[Symbol]	NAC PANEL	4009-9201	13.5"H X 16.5"W X 3"D
[Symbol]	FIRE ALARM CONTROL PANEL	4100-9111	EXISTING

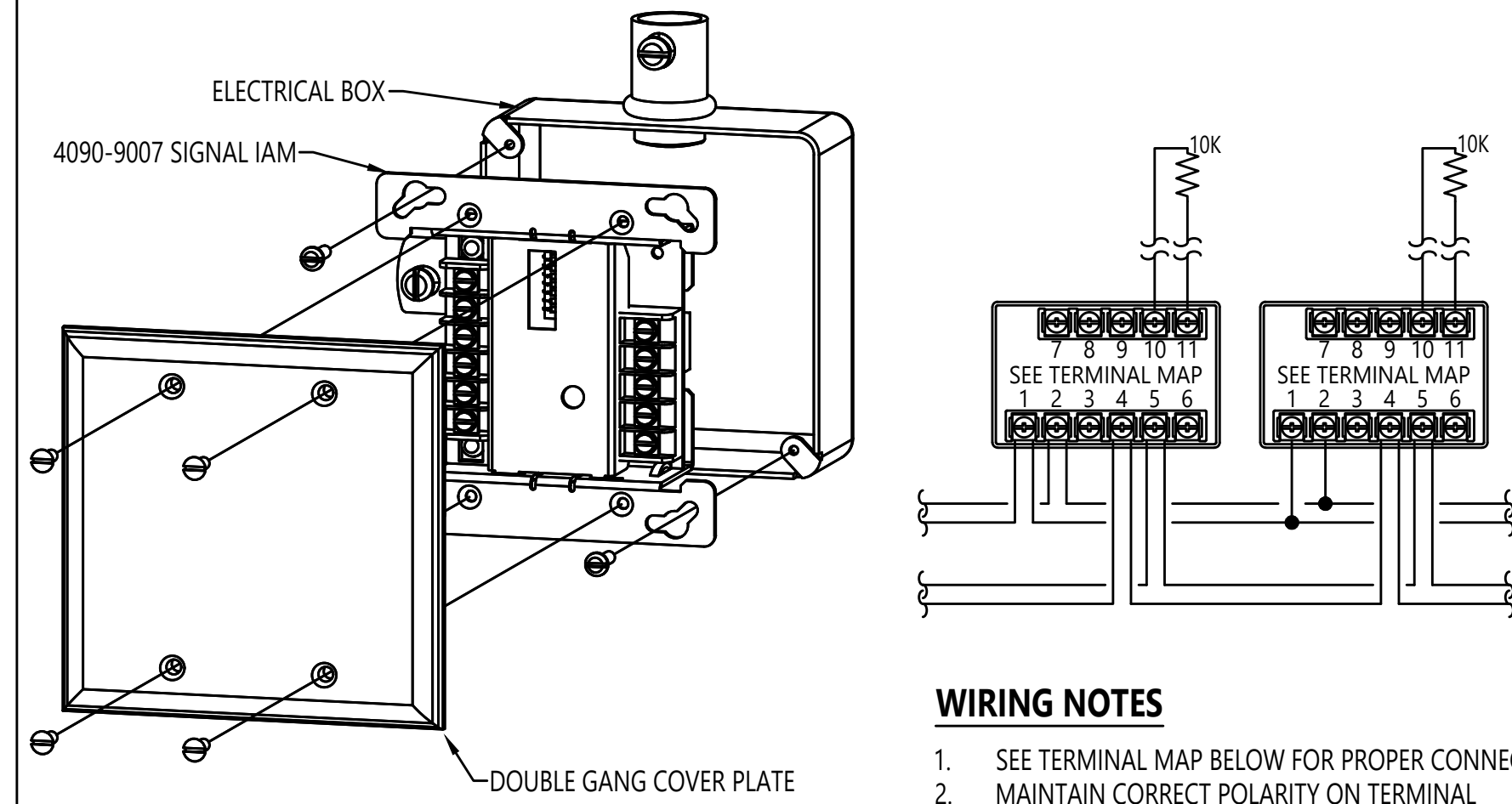
WIRE CODE

ALL WIRING TO MEET CURRENT NATIONAL ELECTRIC CODE ARTICLE 760, 300, 310, 370, 725 AND ALL RELATED SECTION CODE REQUIREMENTS

LETTER	QTY	COLOR/TYPE	SIZE	FUNCTION
A	2	ORANGE/BLACK THHN	16	ZONE
C	2	RED/BLUE THHN	14	STROBE
D	4	RED/BLUE THHN	14	STROBE LOOP
E	2	BROWN/YEL THHN	14	DOOR HOLDER
F	2	ORANGE/BLUE THHN	14	FAN SHUTDOWN
J	1	TW/SHLD. PAIR	14	SPEAKER
K	2	TW/SHLD. PAIR	14	SPEAKER LOOP
M	2	WESTPENN D975	18	TRANSPONDER COMM.
	2	TW/SHLD. PAIR	14	AUDIO RISER
	2	RED/BLACK THHN	14	
P	2	RED/BLACK THHN	14	24VDC POWER
R	4	BLUE/WHITE THHN	16	REMOTE LED w/ TEST
S	2	RED/BLUE THHN	16	SUP. RELEASING

ADDRESSABLE SIGNAL IAM

SIMPLEX 4090-9007



MOUNTING OPTION "A"

MOUNTING OPTIONS

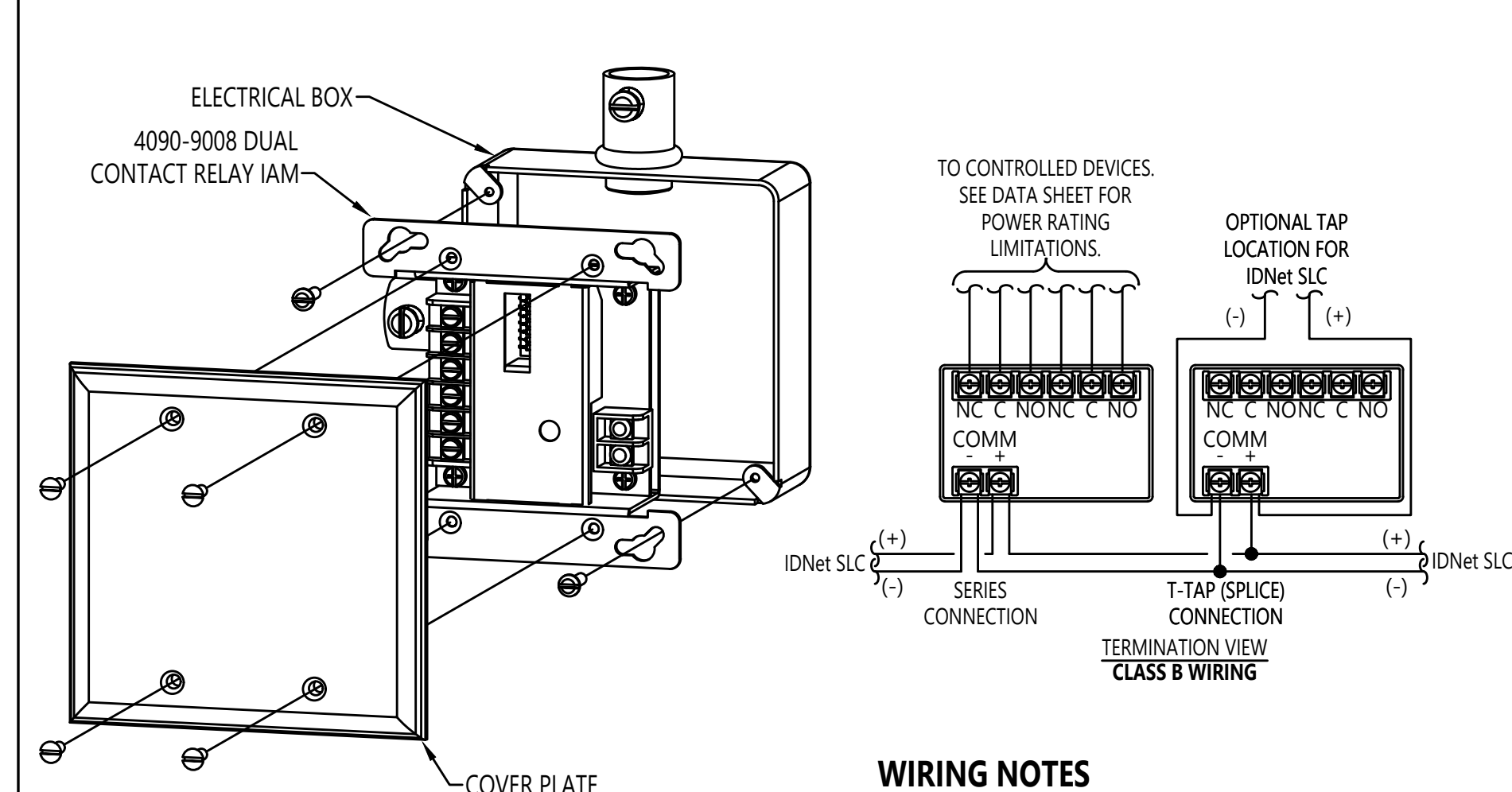
OPTION 1	DESCRIPTION	NOTE
A	4" (102mm) SQUARE BOX, 2-1/8" MINIMUM DEPTH WITH DOUBLE GANG COVER PLATE.	BY OTHERS
B	4" (102mm) SQUARE BOX, 2-1/8" MINIMUM DEPTH WITH SIMPLEX 4090-9801 TRIM PLATE FOR SEMI-FLUSH MOUNTED BOX	BOX BY OTHERS, PLATES ORDERED SEPARATELY
C	4" (102mm) SQUARE BOX, 2-1/8" MINIMUM DEPTH WITH SIMPLEX 4090-9802 TRIM PLATE FOR SURFACE MOUNTED BOX	BOX BY OTHERS, PLATES ORDERED SEPARATELY

1. FOR ADDITIONAL MOUNTING OPTIONS, DOWNLOAD DATA SHEET 4090-0010 FROM [HTTP://WWW.SIMPLEX-FIRE.COM](http://www.simplex-fire.com)

TERMINAL MAP	
1	ADDRESSABLE LOOP +
2	ADDRESSABLE LOOP -
3	ADDRESSABLE LOOP SHIELD
4	SIGNAL IN +
5	SIGNAL IN -
6	SIGNAL IN SHIELD
7	SIGNAL RETURN -
8	SIGNAL RETURN +
9	SIGNAL OUT -
10	SIGNAL OUT +
11	SHIELD

DUAL CONTACT RELAY IAM

SIMPLEX 4090-9008



MOUNTING OPTION "A"

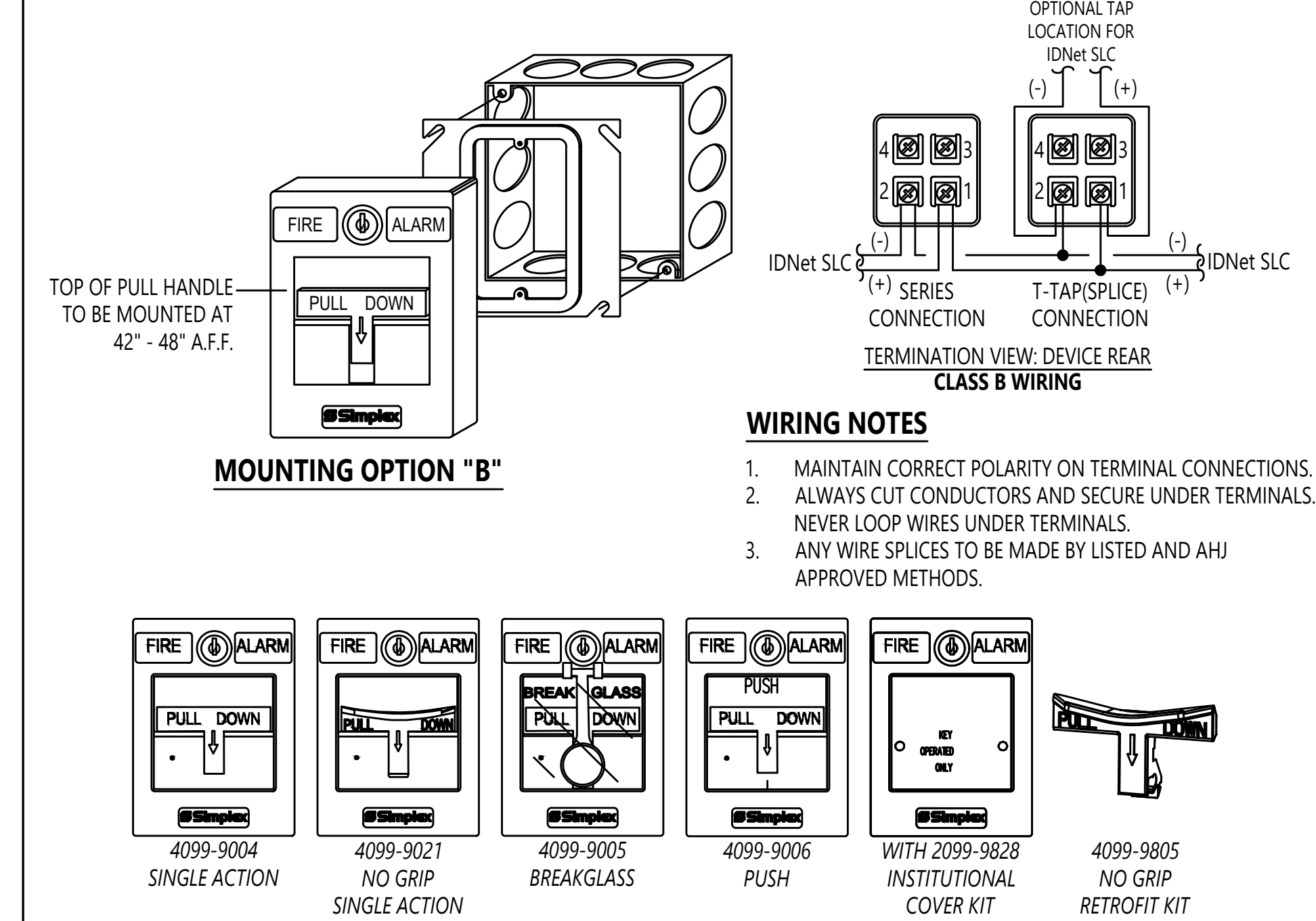
MOUNTING OPTIONS

OPTION 1	DESCRIPTION	NOTE
A	4" (102mm) SQUARE BOX, 2-1/8" MINIMUM DEPTH WITH DOUBLE GANG COVER PLATE.	BY OTHERS
B	4" (102mm) SQUARE BOX, 2-1/8" MINIMUM DEPTH WITH SIMPLEX 4090-9801 TRIM PLATE FOR SEMI-FLUSH MOUNTED BOX	BOX BY OTHERS, PLATES ORDERED SEPARATELY
C	4" (102mm) SQUARE BOX, 2-1/8" MINIMUM DEPTH WITH SIMPLEX 4090-9802 TRIM PLATE FOR SURFACE MOUNTED BOX	BOX BY OTHERS, PLATES ORDERED SEPARATELY

1. FOR ADDITIONAL MOUNTING OPTIONS, DOWNLOAD DATA SHEET 4090-0010 FROM [HTTP://WWW.SIMPLEX-FIRE.COM](http://www.simplex-fire.com)

ADDRESSABLE PULL STATIONS

SIMPLEX 4099 SERIES



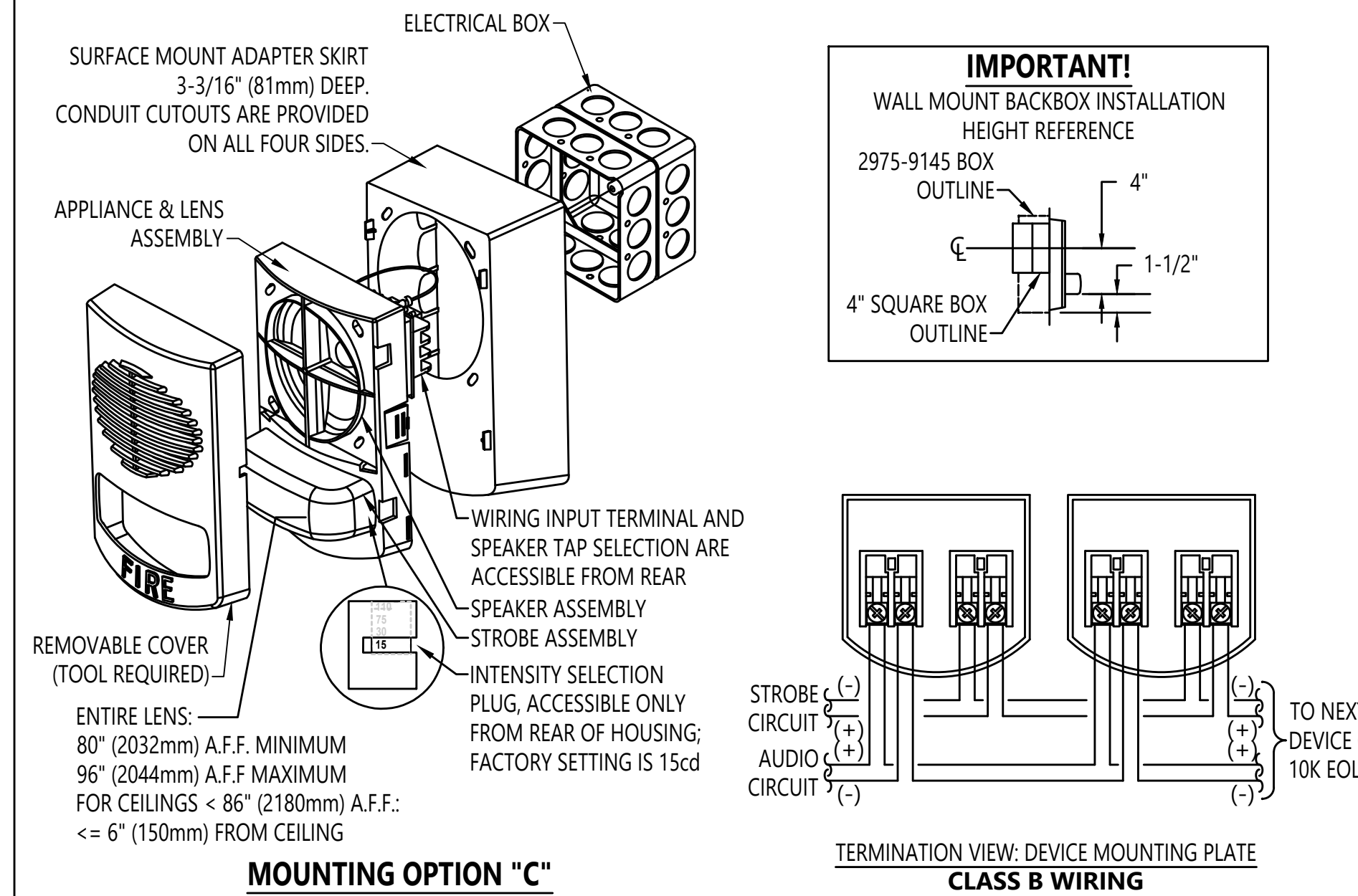
MOUNTING OPTIONS

OPTION 1	DESCRIPTION	NOTE
A	SINGLE GANG BOX, 2-1/2" (64mm) DEEP	BY OTHERS
B	4" (102mm) SQUARE BOX, 2-1/8" DEEP (MIN) W/ SINGLE GANG COVER PLATE 3/4" (19mm) EXTENSION	BY OTHERS
C	SIMPLEX 2975-9022 - 5H x 3-7/8"W x 2-3/16"D (127mm x 98mm x 56mm)	ORDERED SEPARATELY
D	SIMPLEX 2975-9178 - 5-3/4"H x 3-7/8"W x 2-3/16"D (132mm x 102mm x 56mm)	ORDERED SEPARATELY

1. FOR ADDITIONAL MOUNTING OPTIONS, DOWNLOAD DATA SHEET 4099-0005 FROM [HTTP://WWW.SIMPLEX-FIRE.COM](http://www.simplex-fire.com)

TrueAlert CONVENTIONAL APPLIANCES

SIMPLEX 4906 SERIES WALL MOUNTED SPEAKER / VISUAL



MOUNTING OPTION "C"

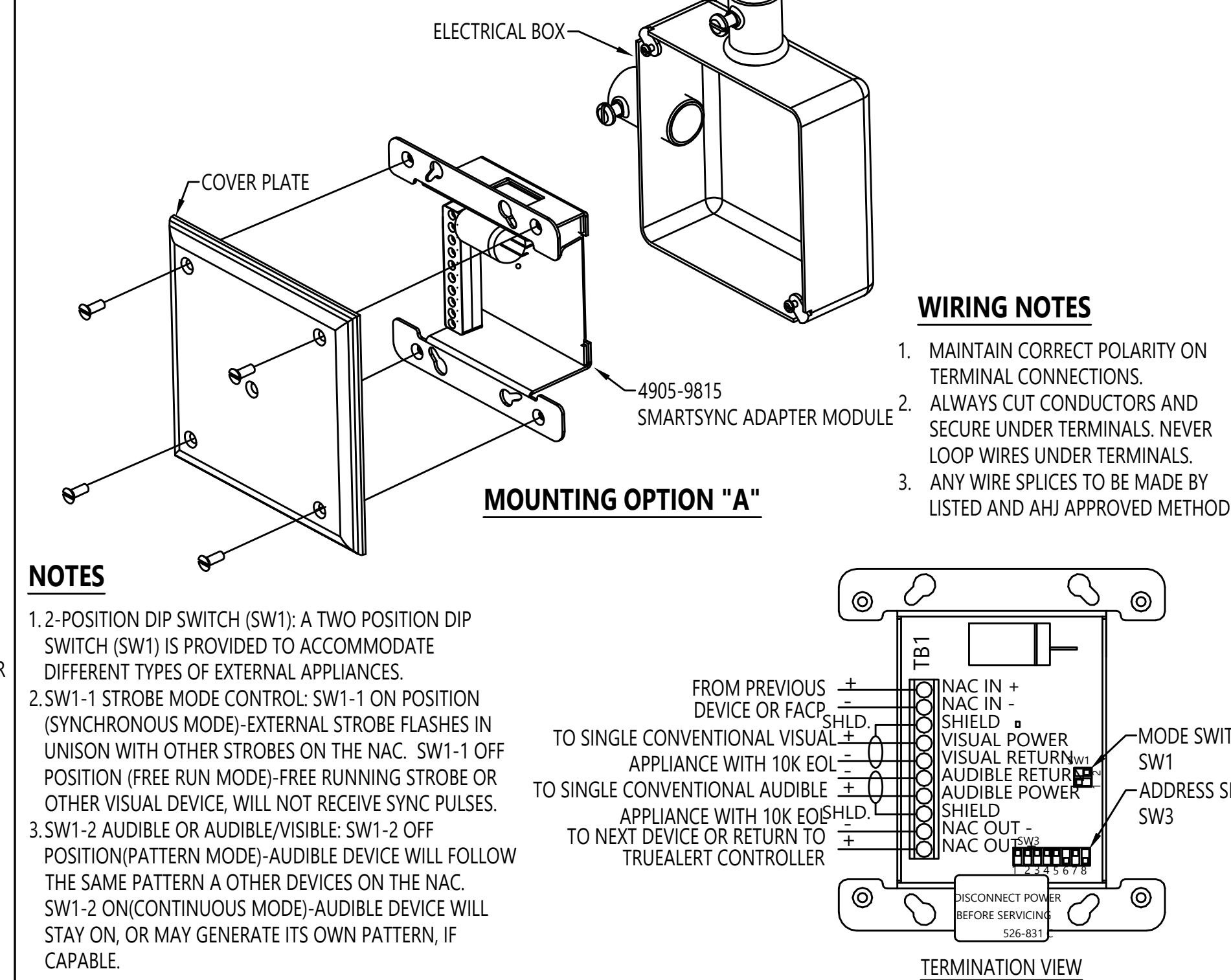
MOUNTING OPTIONS

OPTION 1	DESCRIPTION	NOTE
A	4" (102mm) SQUARE BOX, 1-1/2" (38mm) DEEP, WITH 1-1/2" (38mm) EXTENSION RING - FLUSH MOUNTING	BY OTHERS
B	SIMPLEX 2975-9145 SURFACE MOUNT BOX WITH SIMPLEX 4905-9903 ADAPTER PLATE	ORDERED SEPARATELY
C	4" (102mm) SQUARE BOX, 1-1/2" (38mm) DEEP, WITH 1-1/2" (38mm) EXTENSION RING - SURFACE MOUNTING	SIMPLEX ADAPTER SKIRT REQUIRED

1. FOR ADDITIONAL MOUNTING OPTIONS, DOWNLOAD DATA SHEET 4906-0003 FROM [HTTP://WWW.SIMPLEX-FIRE.COM](http://www.simplex-fire.com)

SMARTSYNC CONVENTIONAL ADAPTER MODULE

SIMPLEX 4905-9815



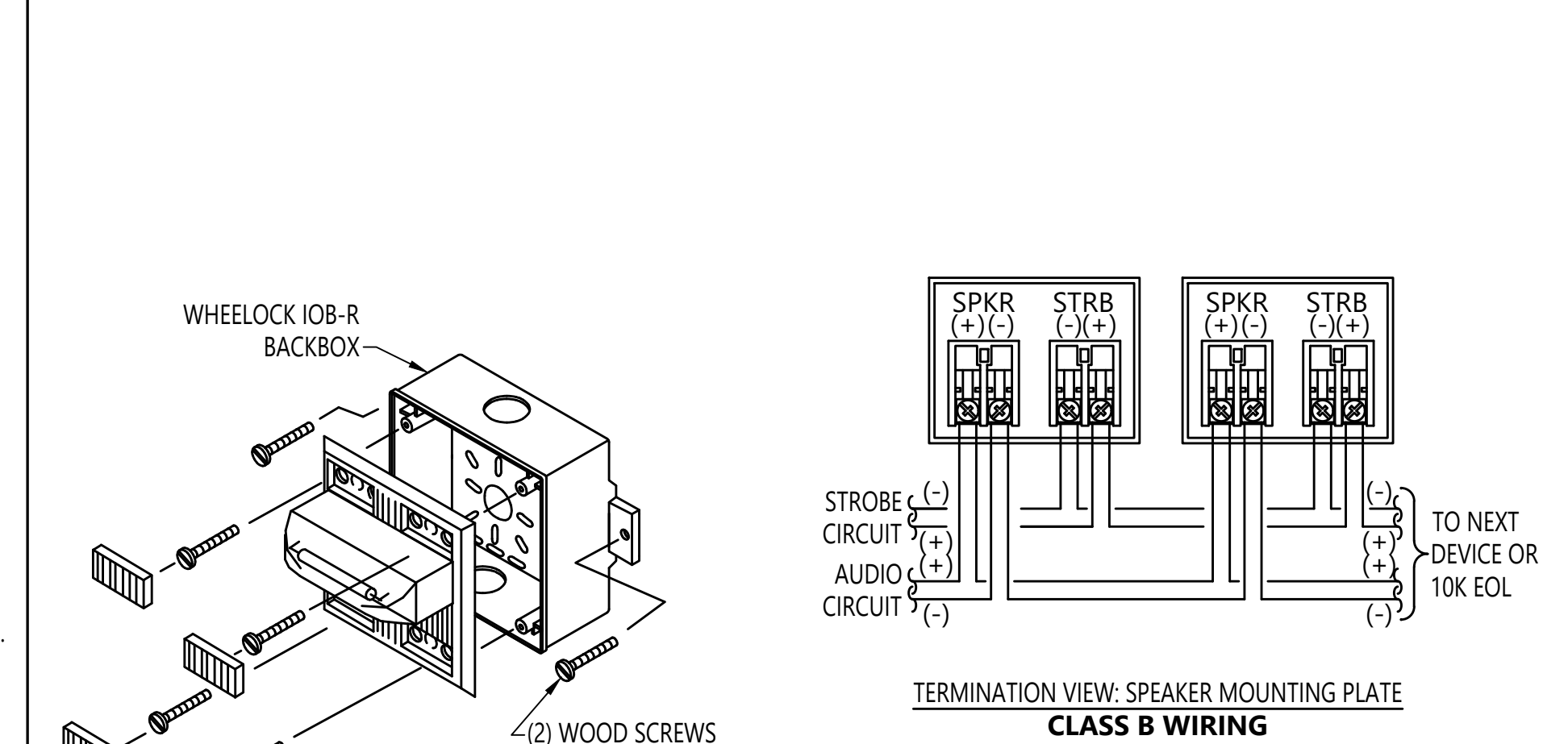
MOUNTING OPTIONS

OPTION 1	DESCRIPTION	NOTE
A	4-11/16" (119mm) SQUARE BOX, 2" (51mm) DEEP (MIN) WITH 2 GANG COVER PLATE	SUPPLIED BY OTHERS

1. FOR ADDITIONAL MOUNTING OPTIONS, DOWNLOAD DATA SHEET 54905-0005 FROM [HTTP://WWW.SIMPLEX-FIRE.COM](http://www.simplex-fire.com)

CONVENTIONAL NOTIFICATION APPLIANCES

WHEELOCK ET70WP SERIES WALL MOUNTED WEATHERPROOF SPEAKER / VISUAL



MOUNTING OPTIONS

OPTION 1	DESCRIPTION	NOTE
A	WHEELOCK IOB SURFACE MOUNT WEATHERPROOF BACKBOX	MANUFACTURER BOX

1. FOR ADDITIONAL MOUNTING OPTIONS, SEE MANUFACTURER DATA SHEET.

TYPICAL POINT TO POINT WIRING DIAGRAM

SCALE: NONE



8520 10th Avenue S, Suite 100
Seattle, WA 98108
SALES: 206-291-1400
SERVICE: 206-291-1500
FAX: 206-291-1500

PROJECT #	612534326	614633427	612478312	650155620	650155620	650107116
DRAWER ENGINEER	SSS	MAM	uEJ	SSS	JDB	SSS
REVISION DESCRIPTION	GSH 2 RIVER 3RD FLR DAY ROOM - REC. DWGS	GSH 1 FOREST 1ST FLR START ROOMS	NODE 2 FACD UPGRADE - RECORD DRAWINGS	AHU REPLACEMENT T.I.	AHU REPLACEMENT T.I. RECORD DRAWINGS	BODY HOLDING RENOVATION T.I.
DATE	8/16/19	10/21/19	3/19/21	2/28/22	7/1/22	7/26/22
NO.	29	30	31			

DRAWINGS REVIEWED BY:
Chad McCannon, SET
NICET #98010
Fire Alarm Systems, Level IV

FIRE ALARM SYSTEM
DETAIL SHEET
GOOD SAMARITAN HOSPITAL
EAST/NORTH WING
401 15TH AVE SE
PUYALLUP, WA

APPROVED BY:
EP
DRAWN BY:
JCP
DATE:
6-21-2001
SITE NUMBER:
459

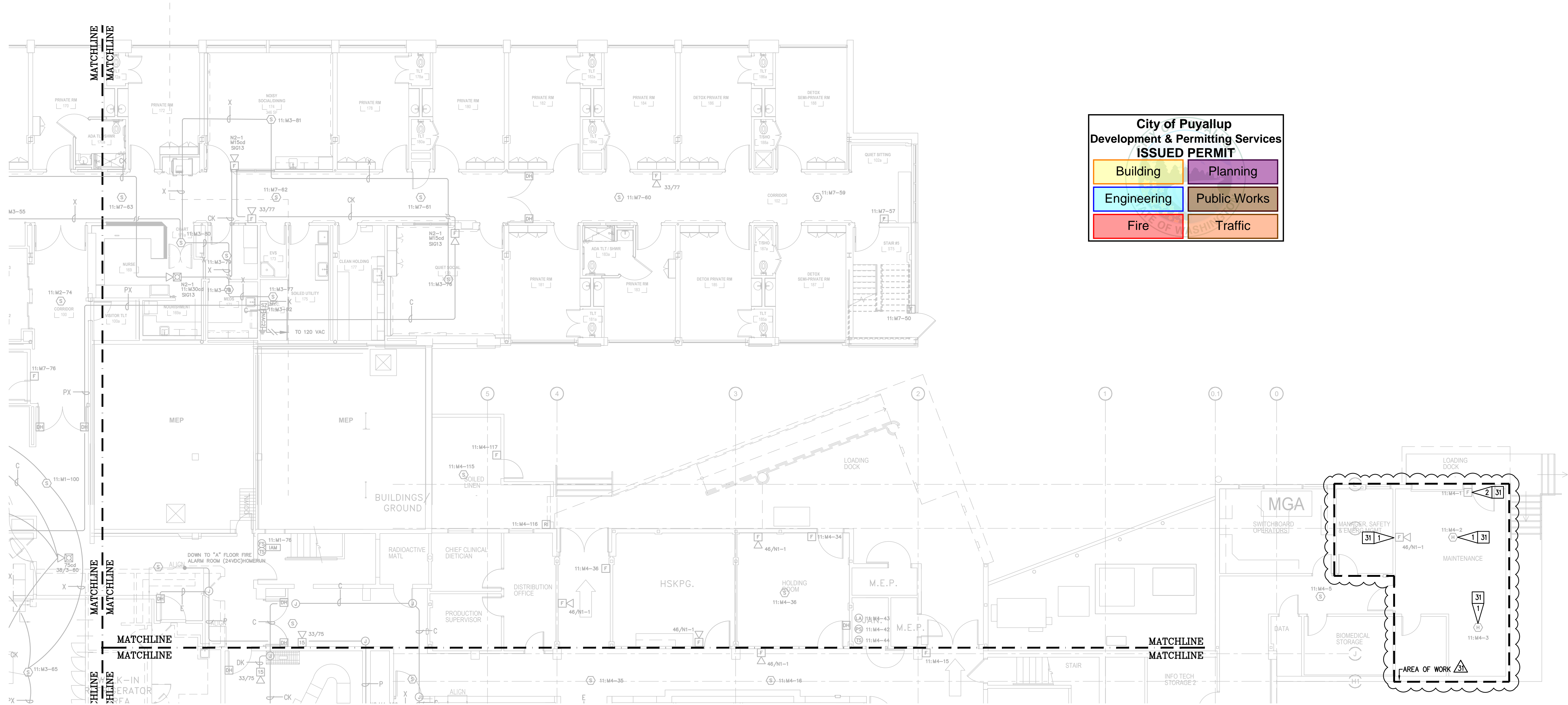
SHEET NUMBER:
FA-DET-04

City of Puyallup
Development & Permitting Services
ISSUED PERMIT

Building	Planning
Engineering	Public Works
Fire	Traffic

GENERAL NOTES:

- EXISTING DEVICE LOCATIONS AND WIRING ARE SHOWN LIGHT AND ARE BASED UPON RECORD DRAWING INFORMATION PROVIDED BY OTHERS. FIELD VERIFY ALL LOCATIONS AND CONNECTIONS TO EXISTING EQUIPMENT. CONTRACTOR TO RED LINE AND NOTE ANY AND ALL CHANGES ON THE RECORD DRAWING SET.
- TAP SPEAKERS AT 1/2W, 25V UNLESS OTHERWISE NOTED.



**City of Puyallup
Development & Permitting Services
ISSUED PERMIT**

Building	Planning
Engineering	Public Works
Fire	Traffic

FIRST FLOOR DEMO NORTH WING
SCALE 1/8"=1'-0"

REVISION 31 FLAG NOTES:

31 1 EXISTING DEVICE TO BE REMOVED AND RETURNED TO OWNER AS SPARE. REMOVE UNNEEDED ASSOCIATED WIRING AND MAINTAIN CIRCUIT INTEGRITY. RELOCATE ANY EOL RESISTORS AS NEEDED. SEE FA-F-01N FOR ADDITIONAL CIRCUITING INFORMATION.

31 2 REMOVE EXISTING DEVICE AND REINSTALL IN SAME LOCATION.

NO.	DATE	REVISION DESCRIPTION	DRAFTER	ENGINEER	PROJECT #
29	6/16/19	GSH 2 RIVER 3RD FLR DAY ROOM - REC. DWGS	SSS	SSS	612534326
29	10/21/19	GSH 1 FOREST 1ST FLR START ROOMS	MAM	JWB	614633427
30	3/19/21	NODE 2 FACP UPGRADE - RECORD DRAWINGS	uEJ	SEH	612476312
30	2/28/22	AHU REPLACEMENT T.I.	SSS	SEH	650155620
31	7/1/22	AHU REPLACEMENT T.I. RECORD DRAWINGS	JDB	JDB	650155620
31	7/26/22	BODY HOLDING RENOVATION T.I.	SSS	SEH	650107116

DRAWINGS REVIEWED BY:
Chad McCannan, SET
NICET #09310
Fire Alarm Systems, Level IV

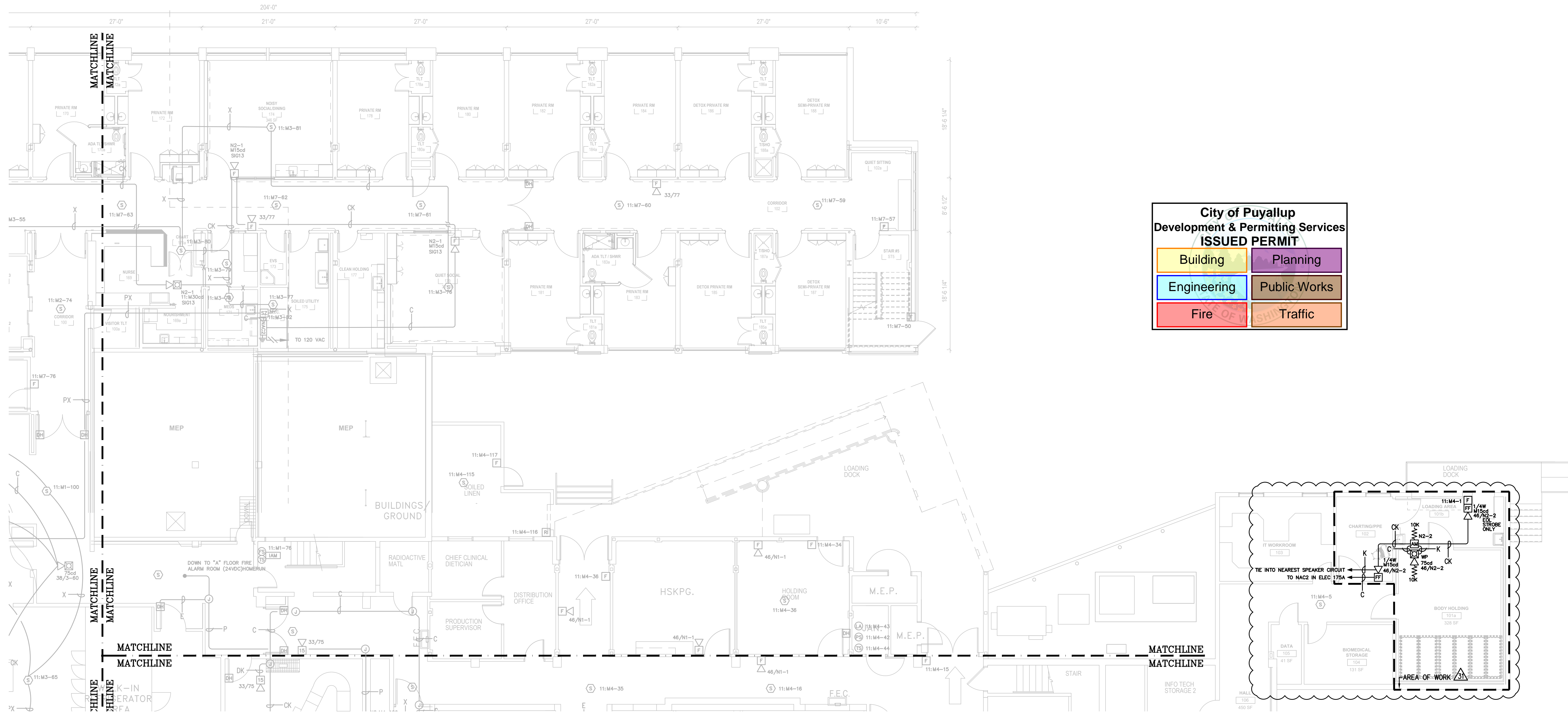
**FIRE ALARM SYSTEM
FIRST FLOOR DEMO NORTH WING
GOOD SAMARITAN HOSPITAL
EAST/NORTH WING
401 15TH AVE SE
PUYALLUP, WA**

APPROVED BY: EP
DRAWN BY: JCP
DATE: 6-21-2001
SHEET NUMBER: 459
SHEET NUMBER: FA-F-01N-D

ELECTRONIC DRAWING NAME
FA-F-01-D

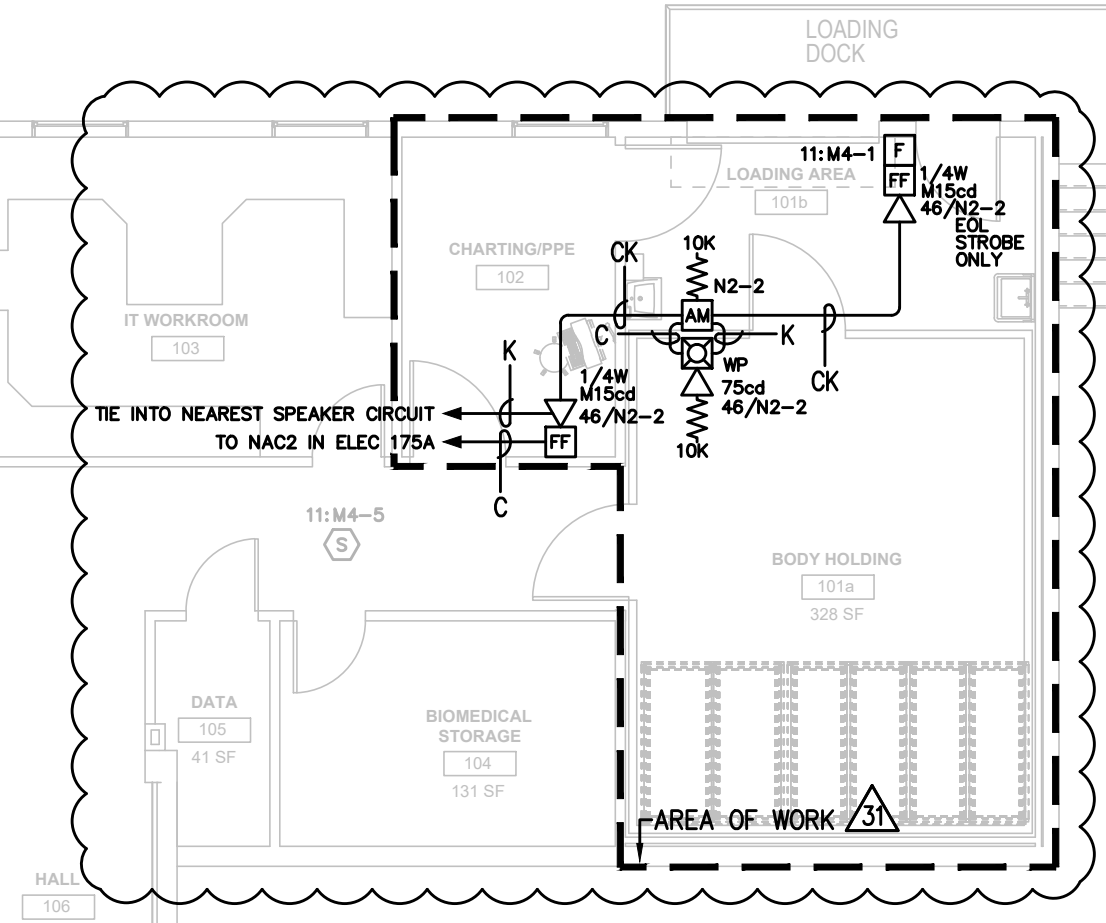
GENERAL NOTES:

- EXISTING DEVICE LOCATIONS AND WIRING ARE SHOWN LIGHT AND ARE BASED UPON RECORD DRAWING INFORMATION PROVIDED BY OTHERS. FIELD VERIFY ALL LOCATIONS AND CONNECTIONS TO EXISTING EQUIPMENT. CONTRACTOR TO RED LINE AND NOTE ANY AND ALL CHANGES ON THE RECORD DRAWING SET.
- TAP SPEAKERS AT 1/2W, 25V UNLESS OTHERWISE NOTED.



**City of Puyallup
Development & Permitting Services
ISSUED PERMIT**

Building	Planning
Engineering	Public Works
Fire	Traffic



- REVISION 31 FLAG NOTES:**
- 31 1** EXISTING DEVICE TO BE REMOVED AND RETURNED TO OWNER AS SPARE. REMOVE UNNEEDED ASSOCIATED WIRING AND MAINTAIN CIRCUIT INTEGRITY. RELOCATE ANY EOL RESISTORS AS NEEDED. SEE FA-F-01N FOR ADDITIONAL CIRCUITING INFORMATION.
 - 31 2** REMOVE EXISTING DEVICE AND REINSTALL IN SAME LOCATION.

FIRST FLOOR NORTH WING
SCALE 1/8"=1'-0"

NO.	DATE	REVISION DESCRIPTION	DRAWER ENGINEER	PROJECT #
29	8/16/19	GSH 2 RIVER 3RD FLR DAY ROOM - REC. DWGS	SSS	612534326
29	10/21/19	GSH 1 FOREST 1ST FLR START ROOMS	MAM	614633427
30	3/19/21	NODE 2 FACP UPGRADE - RECORD DRAWINGS	uEJ	612476312
30	2/28/22	AHU REPLACEMENT T.I.	SSS	650155620
31	7/1/22	AHU REPLACEMENT T.I. RECORD DRAWINGS	JDB	650155620
31	7/26/22	BODY HOLDING RENOVATION T.I.	SSS	650107116

DRAWINGS REVIEWED BY:
Chad McCannan, SET
NICET #93910
Fire Alarm Systems, Level IV

**FIRE ALARM SYSTEM
FIRST FLOOR NORTH WING
GOOD SAMARITAN HOSPITAL
EAST/NORTH WING
401 15TH AVE SE
PUYALLUP, WA**

APPROVED BY: EP
DRAWN BY: JCP
DATE: 6-21-2001
SITE NUMBER: 459
SHEET NUMBER: FA-F-01N