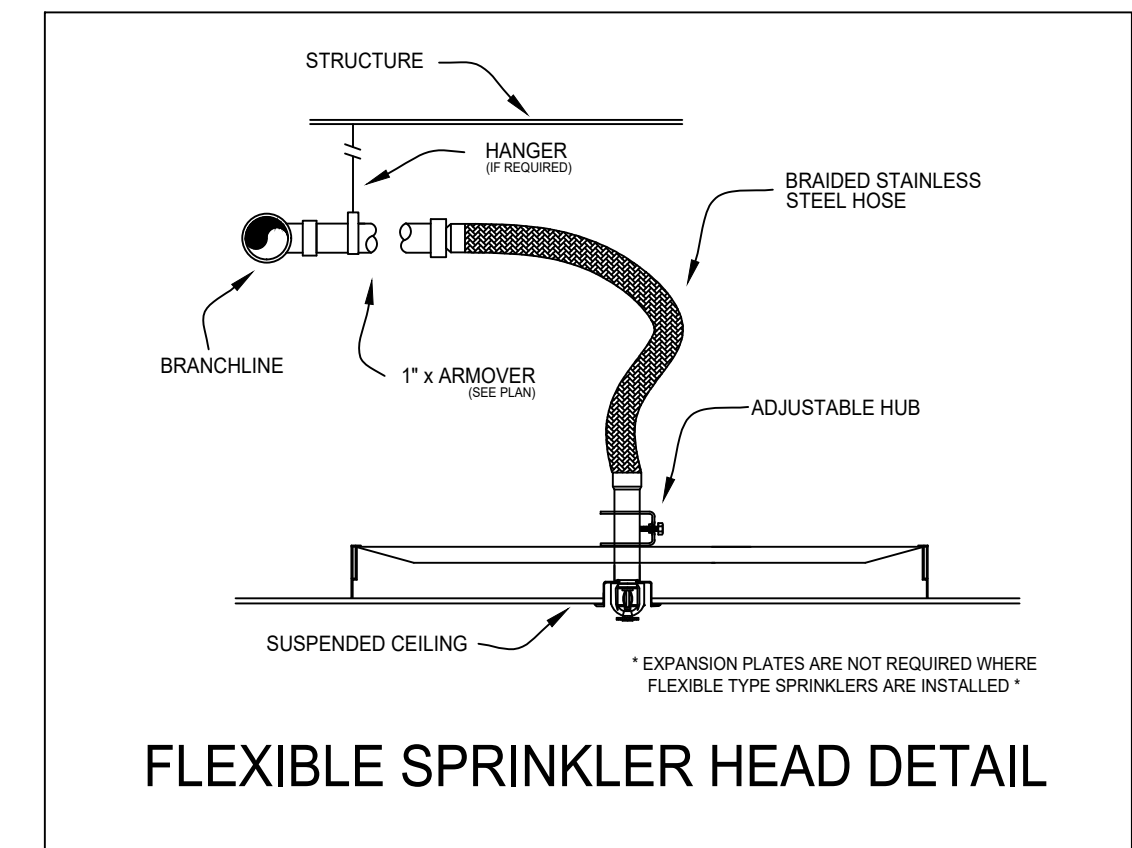


1 LEVEL 1 FIRE SPRINKLER PLAN
1/8" = 1'-0"
0 1' 4' 8' 15' 30'

INSTALLATION DETAILS



SCOPE OF WORK

- RELOCATE AND/OR ADD PENDENT FIRE SPRINKLERS TO ACCOMMODATE TENANT IMPROVEMENTS.
- NEW FIRE SPRINKLERS ARE TO MATCH EXISTING FIRE SPRINKLERS, INCLUDING RESPONSE TYPE, K-FACTOR & TEMPERATURE RATING. SEE LEGEND.
- ALL AREAS OUTSIDE SCOPE OF WORK ARE TO REMAIN AS IS AND UNAFFECTED BY TENANT IMPROVEMENT.

GENERAL NOTES

- THE FIRE SPRINKLER SYSTEM SHALL BE DESIGNED, INSTALLED, AND TESTED IN ACCORDANCE WITH NFPA-13 (2016 EDITION) AND THE AUTHORITY HAVING JURISDICTION.
- ALL MATERIALS SHALL BE NEW AND U.L. LISTED AND/OR FM APPROVED.
- WHERE SUBJECT TO FREEZING CONDITIONS, IT IS THE OWNERS RESPONSIBILITY TO PROVIDE HEATING ADEQUATE TO PREVENT THE FREEZING OF WATER-FILLED PIPE THROUGHOUT AREAS WHERE WET-PIPE FIRE SPRINKLER SYSTEMS ARE INSTALLED, INCLUDING ENCLOSURES FOR DRY FIRE PRECAUTION AND DELUGE FIRE SPRINKLERS SYSTEMS AND ALL OTHER VALVES CONTROLLING WATER SUPPLIES TO SPRINKLER SYSTEMS.
- THE FIRE PROTECTION CONTRACTOR SHALL NOT BE RESPONSIBLE FOR THE ABILITY OF THE STRUCTURE TO ADEQUATELY SUPPORT THE FIRE SPRINKLER SYSTEM.
- ALL ELECTRICAL, PAINTING OF PIPE, FURRING, CUTTING, OR PATCHING SHALL BE BY OTHERS.
- NEW AND RELOCATED UPRIGHT FIRE SPRINKLER HEADS SHALL BE INSTALLED ON BE ON 1" SCHEDULE 40 ARM-OVERS, PENDENT FIRE SPRINKLER HEADS SHALL BE INSTALLED ON:
() 1" SCHEDULE 40 ARM-OVERS
(X) 1" FLEXIBLE FIRE SPRINKLER DROPS
() 1 1/2" HI-FLOW FLEXIBLE FIRE SPRINKLER DROPS
- NEW MAINS AND BRANCH LINES SHALL MATCH THE EXISTING PIPE SIZING SCHEDULE WHERE HYDRAULIC CALCULATIONS ARE NOT REQUIRED.
- FIRE SPRINKLER HEADS HAVE BEEN ADDED AND RELOCATED TO ACCOMMODATE TENANT IMPROVEMENTS. AREAS OUTSIDE THE SCOPE OF WORK AND/OR NOT IN CONTRACT SHALL REMAIN AS IS.
- THE OWNER IS RESPONSIBLE FOR THE PERIODIC INSPECTION, TESTING, AND MAINTENANCE OF THESE FIRE SPRINKLER SYSTEMS IN ACCORDANCE WITH THE REQUIREMENTS OF NFPA 25 (LATEST EDITION.) THIS WORK SHALL BE DONE BY QUALIFIED PERSONNEL STARTING AFTER THE WARRANTY PERIOD HAS EXPIRED. THE COMPANY THAT DESIGNED AND INSTALLED THIS SYSTEM IS THE BEST QUALIFIED TO PROVIDE THE ONGOING LONG TERM TESTING, SERVICING, AND MAINTENANCE OF THIS SYSTEM(S).

SYMBOL LEGEND

- EXISTING BRANCH LINE PIPING
 - EXISTING MAIN PIPING
 - NEW BRANCH LINE PIPING
 - NEW MAIN PIPING
 - FLEX DROP
 - PENDENT FIRE SPRINKLER
 - PENDENT FIRE SPRINKLER ON DROP
 - UPRIGHT FIRE SPRINKLER
 - UPRIGHT FIRE SPRINKLER ON SPRIG
 - SPECIAL APPLICATION PENDENT FIRE SPRINKLER
 - SPECIAL APPLICATION UPRIGHT FIRE SPRINKLER
 - PENDENT ON DROP AND UPRIGHT FIRE SPRINKLER
 - PENDENT ON DROP AND UPRIGHT ON SPRIG FIRE SPRINKLER
 - CONCEALED FIRE SPRINKLER
 - EXTENDED COVERAGE CONCEALED FIRE SPRINKLER
 - EXTENDED COVERAGE PENDENT FIRE SPRINKLER
 - ▲ SIDEWALL FIRE SPRINKLER
 - ▼ DRY SIDEWALL FIRE SPRINKLER
 - ◆ DRY PENDENT FIRE SPRINKLER
 - ✕ DRY EXTENDED COVERAGE PENDENT FIRE SPRINKLER
 - ◁ EXISTING FIRE SPRINKLER (1)
 - ➡ NEW FIRE SPRINKLER (1)
 - ▼ ADDED FIRE SPRINKLER
 - RELOCATED FIRE SPRINKLER
 - ⚡ QUICK RESPONSE FIRE SPRINKLER UPGRADE
 - Ⓜ PLUGGED OUTLET
 - ┌ PIPE CAP
 - └ ELBOW DOWN
 - ┘ TEE DOWN
 - PIPE UP
 - ⊗ DEMOLISH FIRE SPRINKLER HEAD
- * SEE FIRE SPRINKLER LEGEND FOR SPECIFIC SPRINKLER TYPES *

SHEET NOTES

- SMALL ROOM RULE: FIRE SPRINKLERS ARE ALLOWED TO BE SPACED UP TO 9'-0" FROM A SINGLE WALL PER NFPA-13, §8.6.3.2.4.
- SCOPE OF WORK
- INSERT NEW TEE



SEATTLE HEADQUARTERS
5005 3RD AVE S
SEATTLE, WA 98134
(206) 762-3311

SPOKANE OFFICE
850 E SPOKANE FALLS BLVD
STE 100
SPOKANE, WA 99202
(509) 747-3389

PORTLAND OFFICE
16790 NE MASON ST
STE 100
PORTLAND, OR 97230
(503) 331-0234

AUTHORITY HAVING JURISDICTION:

DESIGNER OF RECORD:

WASHINGTON STATE
CERTIFICATE OF COMPETENCY
FIRE PROTECTION SPRINKLER SYSTEMS

Todd M. Kombol
4297-0603-C Level 3
McKinstry Company, L.L.C.
MCKINCL942DW

Todd M. Kombol 7/20/2022 Expires 12/31/22
Signature Date

REVISIONS:

NO.	DATE	DESCRIPTION
0	07/20/2022	SUBMITTED FOR STAMPING

DIVISION:
FIRE PROTECTION

DRAWN BY: JOHN SOMMER
CHECKED BY: TODD KOMBOL
DATE: 07/20/2022
SCALE: 1/8" = 1'-0"

PROJECT:
9898535

GOOD SAMARITAN HOSPITAL
EMERGENCY DEPARTMENT
DOOR TI

401 15TH AVE SE
PUYALLUP, WA 98372

SHEET TITLE:

LEVEL 1
FIRE SPRINKLER PLAN

SHEET NUMBER:
FS101

City of Puyallup Fire REVIEWED FOR COMPLIANCE
DDrake
09/19/2022
6:51:09 AM

THE APPROVED CONSTRUCTION PLANS AND ALL ENGINEERING MUST BE POSTED ON THE JOB AT ALL INSPECTIONS IN A VISIBLE AND READILY ACCESSIBLE LOCATION.

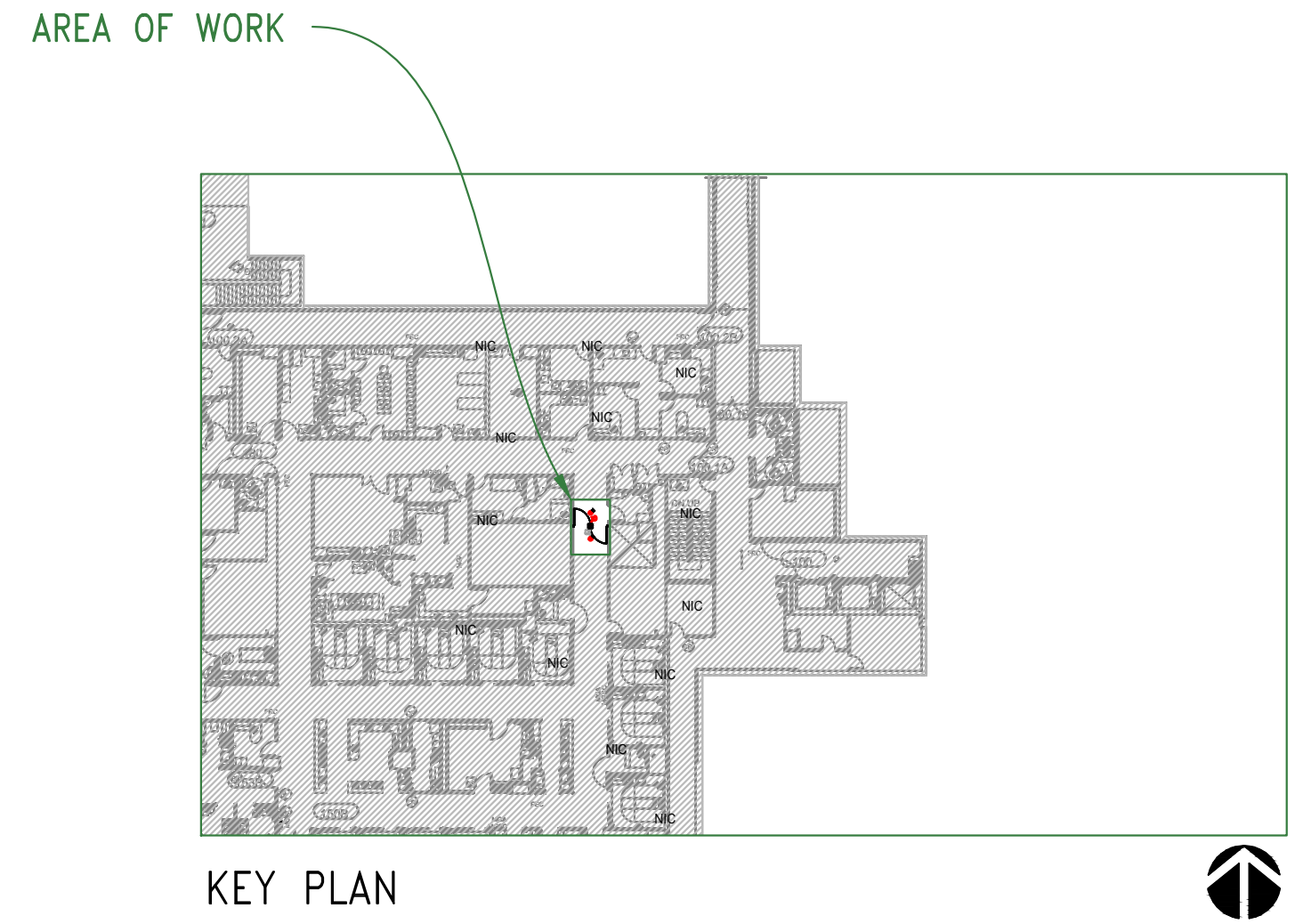
Approval of submitted plans is not an approval of omissions or oversight by this office or noncompliance with any applicable regulations of local government. The contractor is responsible for making sure that the building complies with all applicable building codes and regulations of the local government.

City of Puyallup Development & Permitting Services ISSUED PERMIT

Building	Planning
Engineering	Public Works
Fire	Traffic

FIRE SPRINKLER SCHEDULE

SYM	TYPE	SPK COLOR/ESC COLOR	RESPONSE	TEMP	K	PIPE	MAKE	MODEL	SIN	QTY	NOTES
●	PENDANT	WHITE	WHITE	QUICK	155°F	5.6	1/2"	TYCO	TY-FRB	TY3231	--
●	PENDANT	WHITE	WHITE	QUICK	155°F	5.6	1/2"	TYCO	TY-FRB	TY3231	2 STYLE 20 ESC.
TOTAL										2	



\\MCKINSTRY\Projects\Seattle\Projects\Good Samaritan Hospital\9898535 Emergency Dept Doors TI\001 Fire Sprinkler (04-Design)\04-Internal Review\ISSUED.dwg