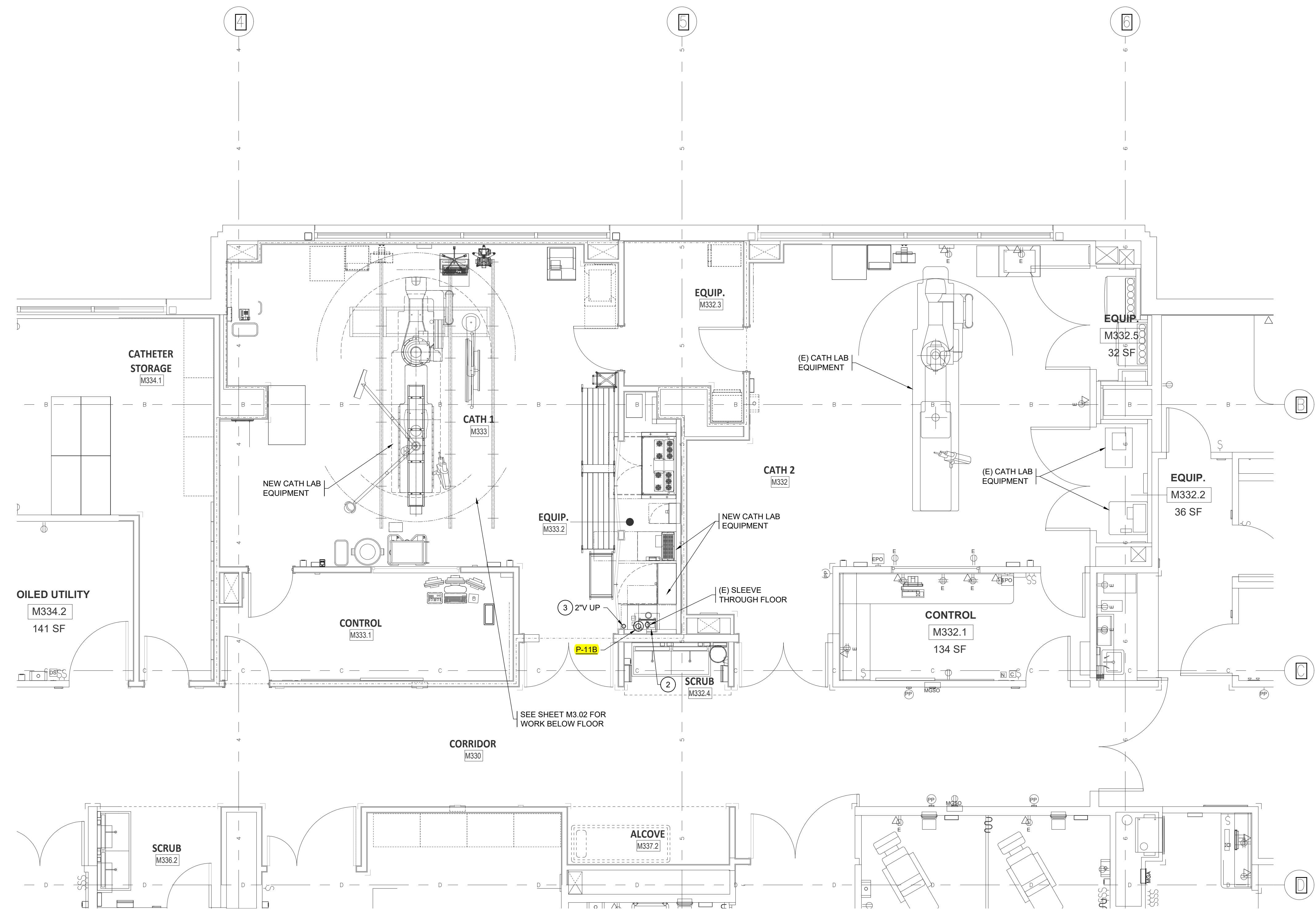


GENERAL NOTES:

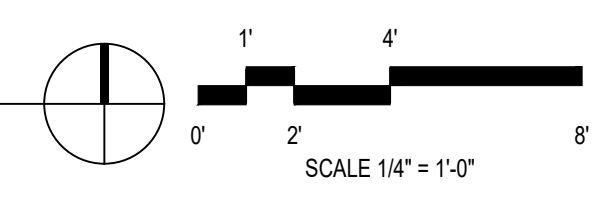
1. SEE GENERAL NOTES SHEET M0.01
2. FOR PIPING SIZES TO INDIVIDUAL FIXTURES, SEE PLUMBING FIXTURE SCHEDULE ON SHEET M0.02.
3. NOT ALL KEYED NOTES USED ON EACH SHEET.

KEYED NOTES:

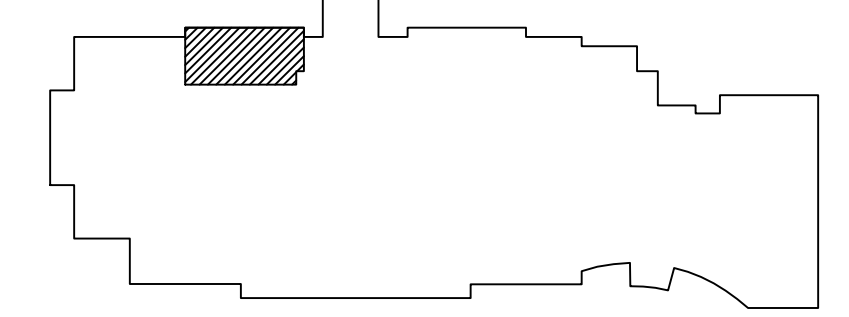
- 1 SLEEVE IS FOR ROUTING OF CHILLED WATER TUBING. SUCH PIPING WILL BE PROVIDED BY THE EQUIPMENT SUPPLIER.
- 2 CHILLER IS SUPPLIED AS PART OF GE EQUIPMENT PACKAGE. EQUIPMENT SUPPLIER SHALL PROVIDE CHILLED WATER TUBING FROM CHILLER, DOWN TO (E) 3" SLEEVE IN CEILING SPACE BELOW, AND UP TO EQUIPMENT.
- 3 CONNECT 2"V AND 1/2"CW TO NEAREST PIPING IN CEILING. FIELD VERIFY LOCATION.



1 3RD FLOOR PLAN - PLUMBING
M3.03 1/4" = 1'-0"



KEY PLAN



CATH LAB #1 EQUIPMENT UPGRADE

Multicare Good Samaritan Hospital

401 15th Ave. SE, Puyallup WA 98372



ISSUE DATE: 03.14.22
REVISIONS:

3RD FLOOR PLAN - PLUMBING

M3.03

HULTZ BHU
engineers inc
1111 Fawcett Ave Suite 100 Tacoma, WA 98402
Phone: (253) 383-3257 Fax: (253) 383-3283
general@hultzbhu.com Job Number: 21-054

PERMIT SET