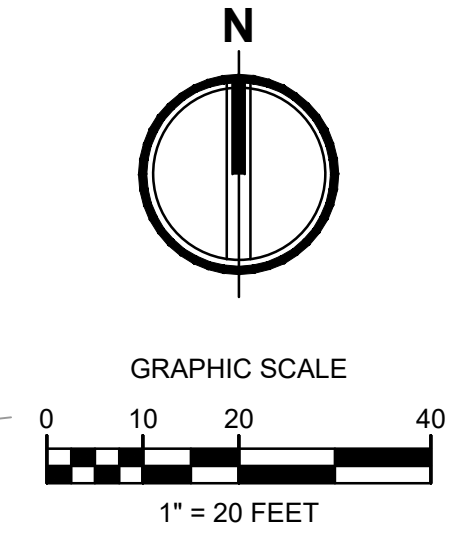


APPROVED

BY: _____
CITY OF PUYALLUP
DEVELOPMENT ENGINEERING

DATE: _____

NOTE: THIS APPROVAL IS VOID AFTER 180 DAYS FROM APPROVAL DATE. THE CITY WILL NOT BE RESPONSIBLE FOR ERRORS AND/OR OMISSIONS ON THESE PLANS. FIELD CONDITIONS MAY DICTATE CHANGES TO THESE PLANS AS DETERMINED BY THE DEVELOPMENT ENGINEERING MANAGER.



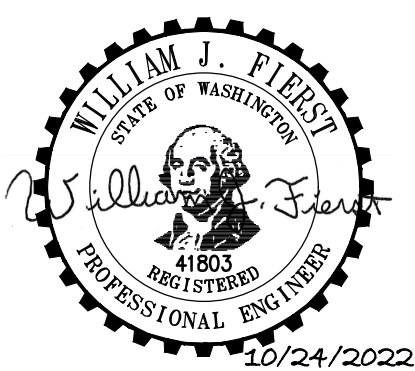
- LEGEND:**
- RIGHT-OF-WAY/PROPERTY LINE
 - PROPOSED BUILDING OUTLINE
 - [Hatched Pattern] ASPHALT PAVEMENT - STANDARD DUTY (1 C5.1)
 - [Hatched Pattern] ASPHALT PAVEMENT - HEAVY DUTY (1 C5.1)
 - [Hatched Pattern] CEMENT CONCRETE - STANDARD DUTY (2 C5.1)
 - [Hatched Pattern] CEMENT CONCRETE - HEAVY DUTY (2 C5.1)
 - [Hatched Pattern] GRAVEL SURFACING (7 C5.1)
 - [Hatched Pattern] GRASSPAVE SURFACING (10 C5.1)
 - o BOLLARD PROTECTION. SEE LANDSCAPE FOR MORE INFORMATION.
 - CEMENT CONCRETE WHEEL STOP (6 C5.1)
 - (X) CHANGE IN CURB TYPE / END CURB
 - EC CONCRETE EXTRUDED CURB (4 C5.1)
 - IC INTEGRAL CURB AND SIDEWALK (3 C5.1)
 - FC FLUSH CURB (3 C5.1)
 - TC TRAFFIC CURB (5 C5.1)
 - CG CONCRETE CURB AND GUTTER (9 C5.1)
 - RC 3" ROLLED CURB PER WSDOT STD DETAIL F-10.18-02, CURB 1 TYPE
 - PAINT TOP AND FACE OF CURB RED

- PAVING NOTES**
- THE EXISTING SITE SOILS REQUIRE PROPER COMPACTION PRIOR TO PLACEMENT OF PAVING AND UTILITY IMPROVEMENTS.
 - CONTRACTOR SHALL ASSURE POSITIVE DRAINAGE AWAY FROM BUILDINGS FOR ALL PAVED AND NON-PAVED AREAS, AND SHALL GRADE ALL AREAS TO PRECLUDE PONDING OF SURFACE WATER.
 - SEE ARCHITECT'S AND LANDSCAPE ARCHITECT'S PLAN FOR OTHER SITE FEATURES.

- GENERAL NOTES**
- SEE ARCHITECT'S AND LANDSCAPE ARCHITECT'S PLANS FOR ADDITIONAL SITE FEATURES.
 - SEE LANDSCAPE ARCHITECT'S PLANS FOR SPECIALTY SITE SURFACING.

- KEYNOTES:**
- (1) PAINT TOP AND FACE OF CURB RED
 - (2) THERMOPLASTIC TYPE 2SR TRAFFIC ARROW PER WSDOT STANDARD PLAN M-24.40-02
 - (3) CURB DRAINAGE OPENINGS AT PARKING ISLAND (4 C5.4)
 - (4) MUTCD R3-5L LEFT TURN ONLY SIGN, MOUNTED ON EXISTING POST
 - (5) ASPHALT THICKENED EDGE (5 C5.5)
 - (6) THERMOPLASTIC TYPE 2SL TRAFFIC ARROW PER WSDOT STANDARD PLAN M-24.40-02

integrus
ARCHITECTURE



STATE PROJECT NO.: 2020-148
PIERCE COLLEGE PUYALLUP
NEW STEM BUILDING
1601 39th AVE SE
Puyallup, WA 98374

Date: 10/25/22
Job No.: 22135.00
Drawn By: C. HOVDE
Checked by: W. FIERST

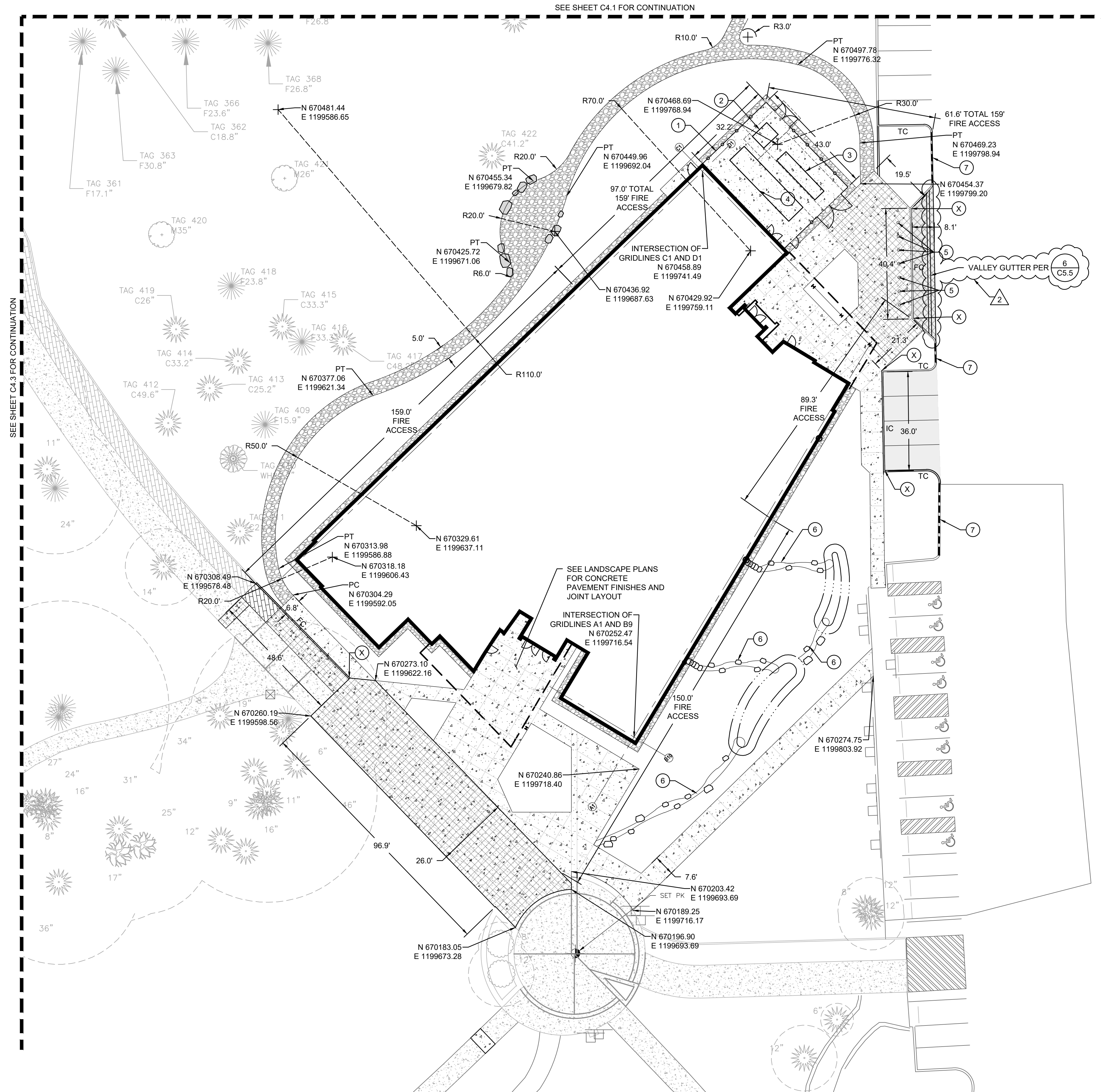
Revisions		
#	Date	Description
1	08/19/22	PERMIT RESUBMITTAL
2	10/25/22	PERMIT RESUBMITTAL

PAVING AND
HORIZONTAL
CONTROL PLAN

C4.1

NOTICE
ALTERATION OF THIS DOCUMENT SHALL MAINTAIN THE PROFESSIONAL SEAL AND SIGNATURE. REPRODUCTION OF THIS DOCUMENT DOES NOT CONSTITUTE FROM RECEIVED COPYRIGHT RIGHTS IN THIS DOCUMENT IS FOR USE ONLY FOR THE PROJECT IDENTIFIED IN THE TITLE. REUSE AND NOT TO BE USED FOR REUSE, REPRODUCTION OR ADDITION TO THIS PROJECT OR FOR ANY OTHER PROJECT.

SEE SHEET C4.2 FOR CONTINUATION



SEE SHEET C4.3 FOR CONTINUATION

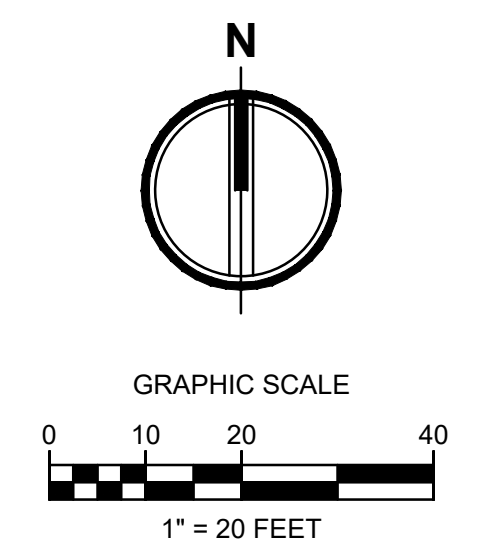
SEE SHEET C4.1 FOR CONTINUATION

APPROVED

BY: _____
CITY OF PUYALLUP
DEVELOPMENT ENGINEERING

DATE: _____

NOTE: THIS APPROVAL IS VOID AFTER 180 DAYS FROM APPROVAL DATE. THE CITY WILL NOT BE RESPONSIBLE FOR ERRORS AND/OR OMISSIONS ON THESE PLANS. FIELD CONDITIONS MAY DICTATE CHANGES TO THESE PLANS AS DETERMINED BY THE DEVELOPMENT ENGINEERING MANAGER.



LEGEND:

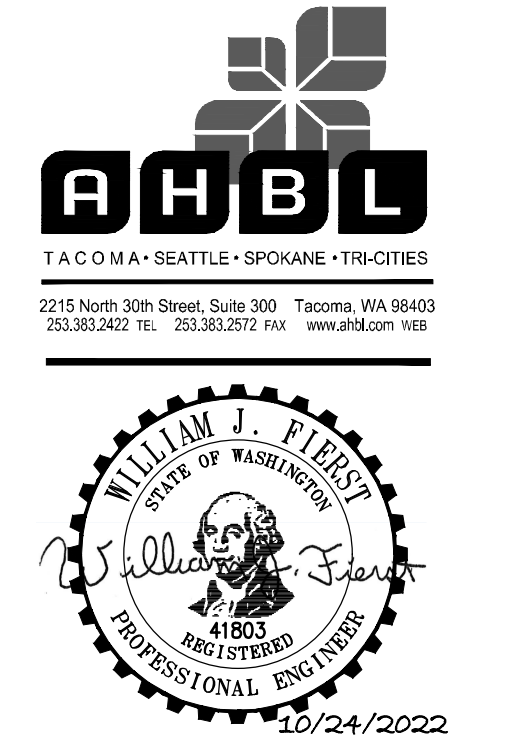
- RIGHT-OF-WAY/PROPERTY LINE
- PROPOSED BUILDING OUTLINE
- ASPHALT PAVEMENT - STANDARD DUTY (1 C5.1)
- ASPHALT PAVEMENT - HEAVY DUTY (1 C5.1)
- CEMENT CONCRETE - STANDARD DUTY (2 C5.1)
- CEMENT CONCRETE - HEAVY DUTY (2 C5.1)
- GRAVEL SURFACING (7 C5.1)
- GRASSPAVE SURFACING (10 C5.1)
- BOLLARD PROTECTION
- CEMENT CONCRETE WHEEL STOP (6 C5.1)
- (X) CHANGE IN CURB TYPE / END CURB
- EC CONCRETE EXTRUDED CURB (4 C5.1)
- IC INTEGRAL CURB AND SIDEWALK (3 C5.1)
- FC FLUSH CURB (3 C5.1)
- TC TRAFFIC CURB (5 C5.1)
- CG CONCRETE CURB AND GUTTER (9 C5.1)
- RC 3" ROLLED CURB PER WSDOT STD DETAIL F-10.18-02, CURB 1 TYPE
- PAINT TOP AND FACE OF CURB RED

KEYNOTES:

- (1) FENCE, SEE LANDSCAPE ARCHITECTURAL PLANS
- (2) TRANSFORMER, SEE ELECTRICAL PLAN
- (3) GENERATOR, SEE ELECTRICAL PLAN
- (4) CHILLER, SEE MECHANICAL PLAN
- (5) BOLLARD PROTECTION, SEE LANDSCAPE FOR MORE INFORMATION
- (6) SEE LANDSCAPE ARCHITECT'S PLAN FOR SWALE AND ROCK.
- (7) PAINT TOP AND FACE OF CURB RED

integrus
ARCHITECTURE

117 SOUTH MAIN STREET, SUITE 100, SEATTLE, WA 98104
TELEPHONE: (206) 467-1137 FAX: (206) 467-1131



STATE PROJECT NO.: 2020-148
PIERCE COLLEGE PUYALLUP
NEW STEM BUILDING
1601 39th AVE SE
Puyallup, WA 98374

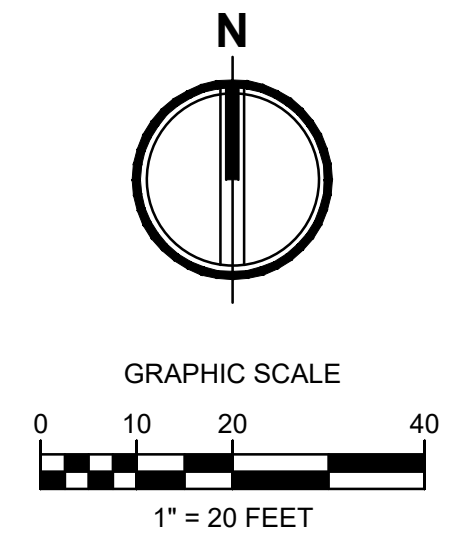
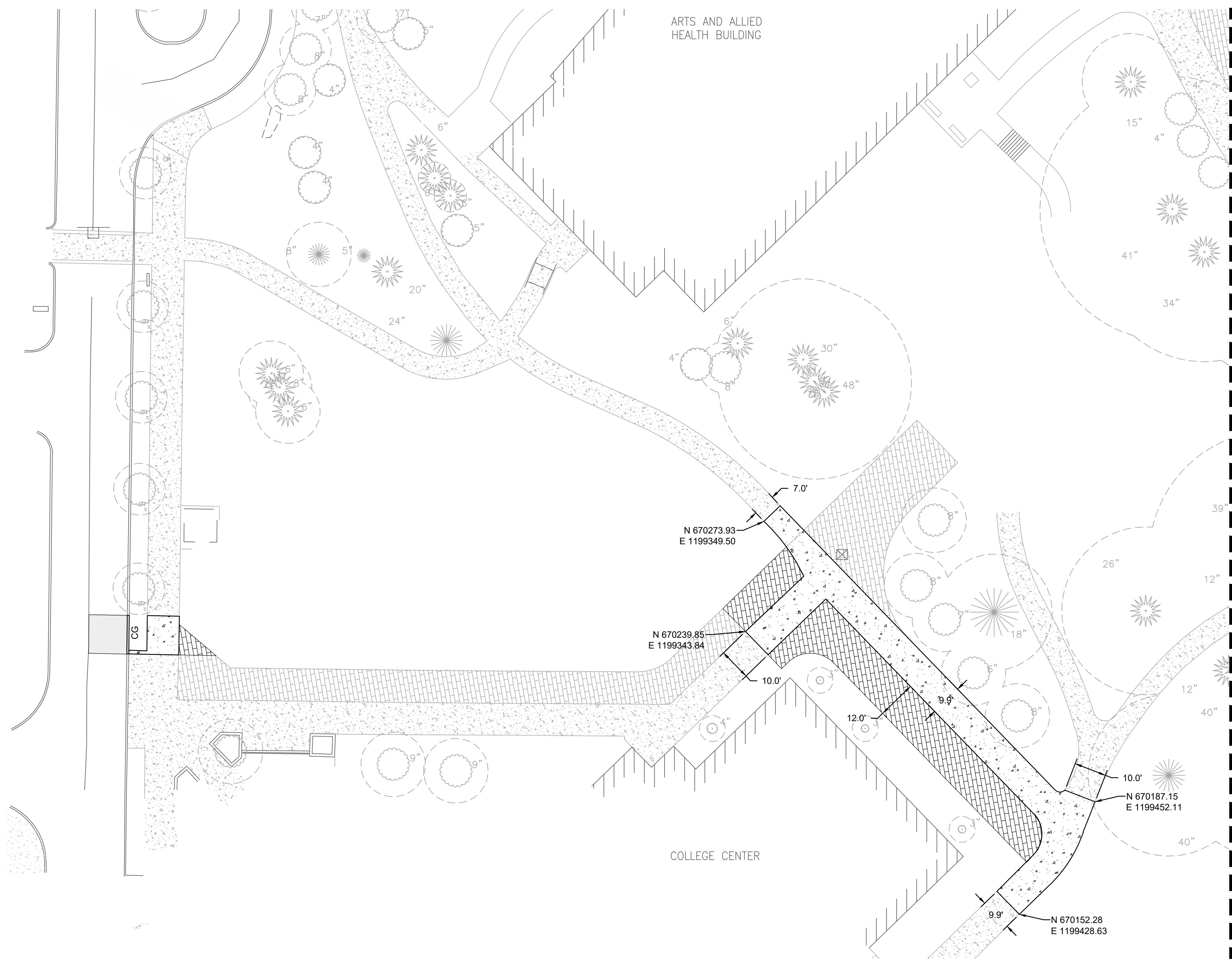
Date: 10/25/22
Job No.: 22135.00
Drawn By: C. HOVDE
Checked by: W. FIERST

Revisions		
#	Date	Description
1	08/19/22	PERMIT RESUBMITTAL
2	10/25/22	PERMIT RESUBMITTAL

PAVING AND
HORIZONTAL
CONTROL PLAN

C4.2

NOTICE
ALTERATION OF THIS DOCUMENT SHALL MAINTAIN THE PROFESSIONAL SEAL AND SIGNATURE. PERMISSION OF THIS DOCUMENT DOES NOT CONSTITUTE FROM RECEIVED OWNERSHIP RIGHTS IN THIS DOCUMENT IS FOR USE ONLY FOR THE PROJECT IDENTIFIED IN THE TITLE. REUSE AND NOT TO BE USED FOR REPAIR, REMODEL OR ADDITION TO THIS PROJECT OR FOR ANY OTHER PROJECT.



APPROVED

BY: _____
CITY OF PUYALLUP
DEVELOPMENT ENGINEERING

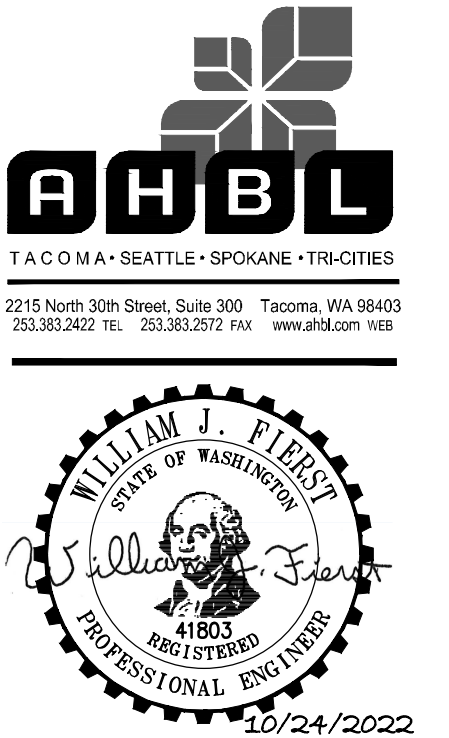
DATE: _____

NOTE: THIS APPROVAL IS VOID AFTER 180 DAYS FROM APPROVAL DATE. THE CITY WILL NOT BE RESPONSIBLE FOR ERRORS AND/OR OMISSIONS ON THESE PLANS. FIELD CONDITIONS MAY DICTATE CHANGES TO THESE PLANS AS DETERMINED BY THE DEVELOPMENT ENGINEERING MANAGER.

- LEGEND:**
- RIGHT-OF-WAY/PROPERTY LINE
 - PROPOSED BUILDING OUTLINE
 - ASPHALT PAVEMENT - STANDARD DUTY (1) (C5.1)
 - ASPHALT PAVEMENT - HEAVY DUTY (1) (C5.1)
 - CEMENT CONCRETE - STANDARD DUTY (2) (C5.1)
 - CEMENT CONCRETE - HEAVY DUTY (2) (C5.1)
 - GRAVEL SURFACING (7) (C5.1)
 - GRASSPAVE SURFACING (10) (C5.1)
 - o BOLLARD PROTECTION. SEE LANDSCAPE FOR MORE INFORMATION.
 - CEMENT CONCRETE WHEEL STOP (6) (C5.1)
 - (X) CHANGE IN CURB TYPE / END CURB
 - EC CONCRETE EXTRUDED CURB (4) (C5.1)
 - IC INTEGRAL CURB AND SIDEWALK (3) (C5.1)
 - FC FLUSH CURB (3) (C5.1)
 - TC TRAFFIC CURB (5) (C5.1)
 - CG CONCRETE CURB AND GUTTER (9) (C5.1)
 - RC 3" ROLLED CURB PER WSDOT STD DETAIL F-10.18-02, CURB 1 TYPE

integrus
ARCHITECTURE

117 SOUTH MAIN STREET, SUITE 100, SEATTLE, WA 98104
TELEPHONE: (206) 767-1137 FAX: (206) 767-1133



STATE PROJECT NO.: 2020-148
PIERCE COLLEGE PUYALLUP
NEW STEM BUILDING
1601 39th AVE SE
Puyallup, WA 98374

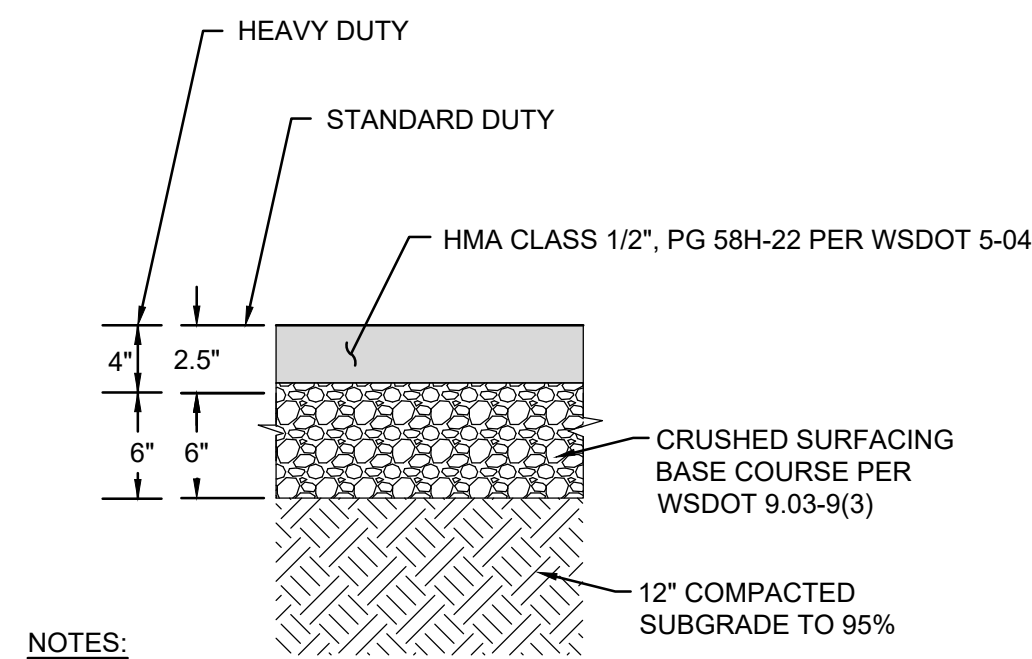
Date: 10/25/22
Job No.: 22135.00
Drawn By: C. HOVDE
Checked by: W. FIERST

Revisions		
#	Date	Description
1	08/19/22	PERMIT RESUBMITTAL
2	10/25/22	PERMIT RESUBMITTAL

PAVING AND
HORIZONTAL
CONTROL PLAN

C4.3

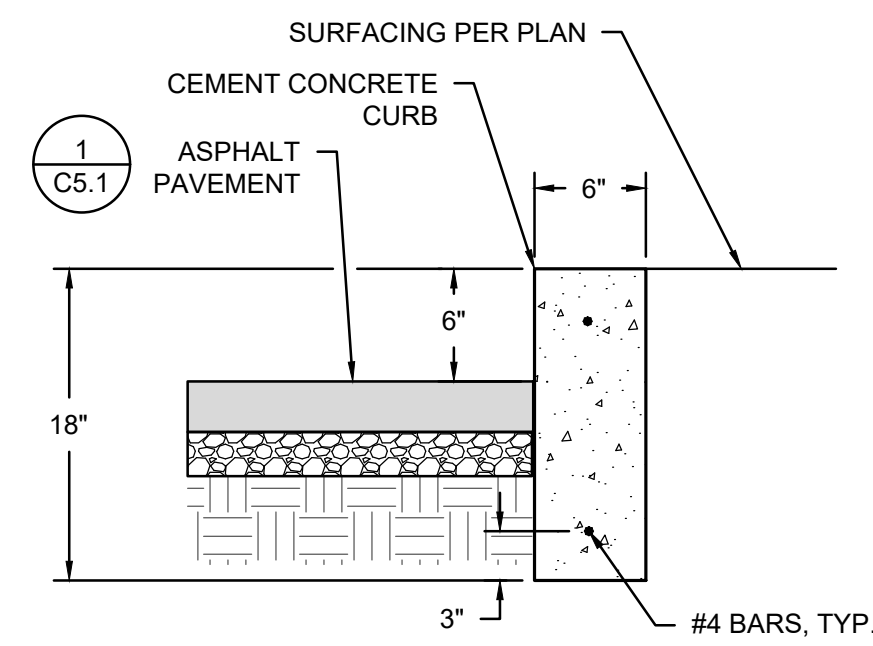
NOTICE
ALTERATION OF THIS DOCUMENT SHALL MAINTAIN THE PROFESSIONAL SEAL AND SIGNATURE. REPRODUCTION OF THIS DOCUMENT DOES NOT CONSTITUTE FROM RECEIVED OWNERSHIP RIGHTS IN THIS DOCUMENT. FOR USE ONLY FOR THE PROJECT IDENTIFIED IN THE TITLE. BLOCK AND IS NOT TO BE USED FOR REPAIR, REMODEL OR ADDITION TO THIS PROJECT OR FOR ANY OTHER PROJECT.



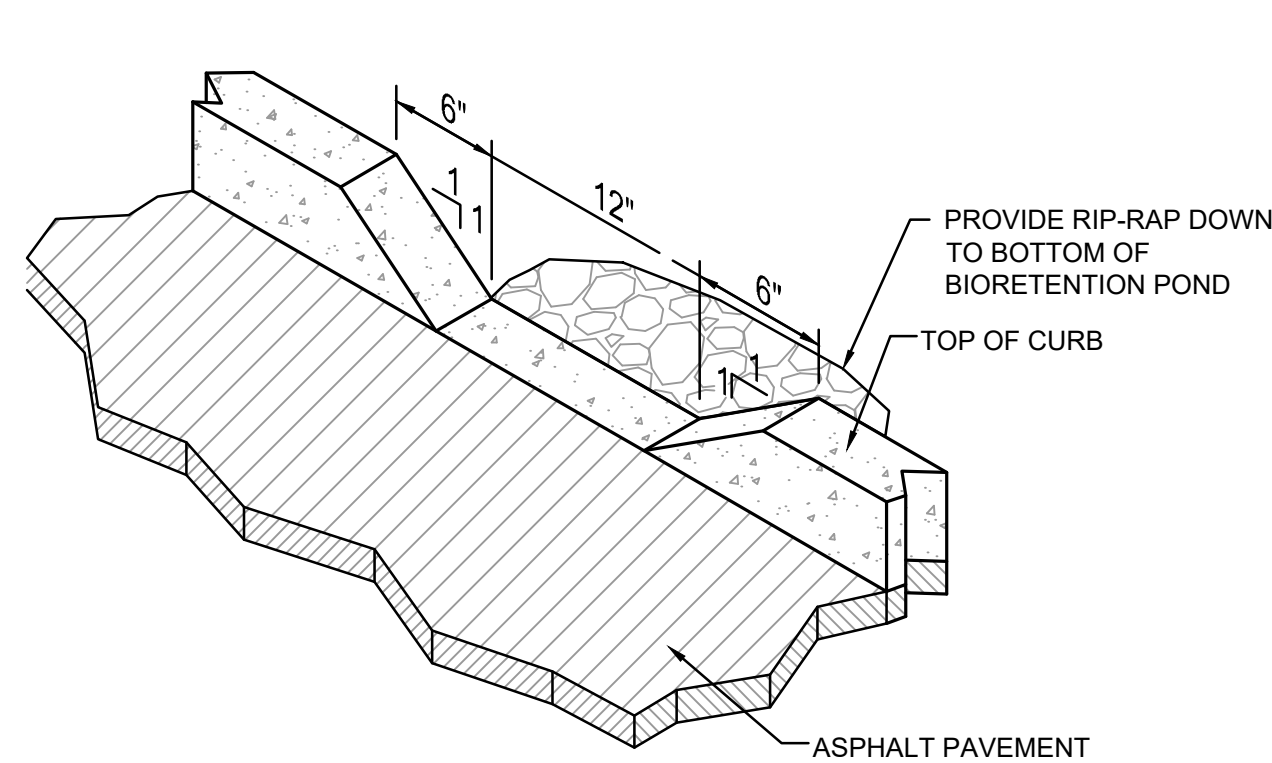
NOTES:

1. ALL DEPTHS SHOWN ARE COMPACTED DEPTHS.
2. THE CONTRACTOR SHALL EXPOSE EXISTING FILL, PROOF ROLL AND COMPACT TO 95%. IF YIELDING CONDITIONS ARE ENCOUNTERED, YIELDING MATERIALS SHALL BE REPLACED WITH IMPORTED STRUCTURAL FILL MATERIAL. THE DEPTH OF MATERIAL REPLACEMENT SHALL BE DETERMINED BY THE GEOTECHNICAL ENGINEER.

1 ASPHALT SECTION
NOT TO SCALE



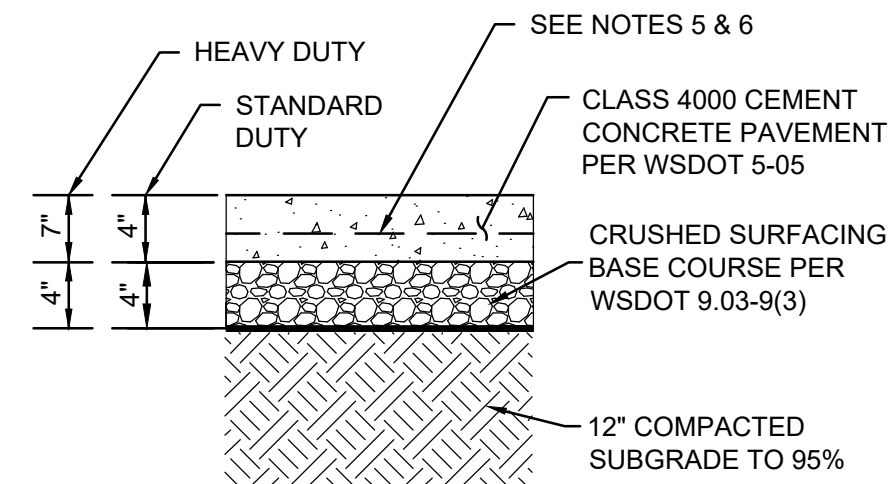
5 TRAFFIC CURB
NOT TO SCALE



NOTE:

1. PROVIDE CURB CUTS AT LOW POINTS AND AT 10 FEET O.C.

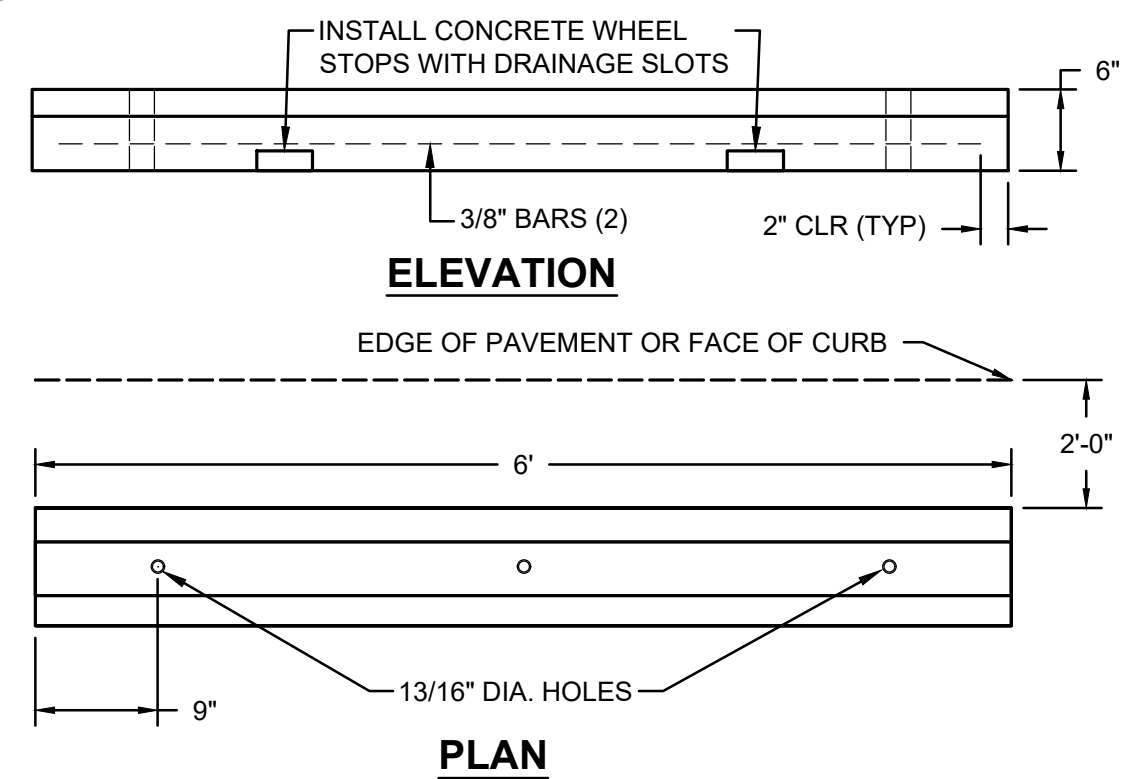
8 CURB DRAINAGE OPENING
NOT TO SCALE



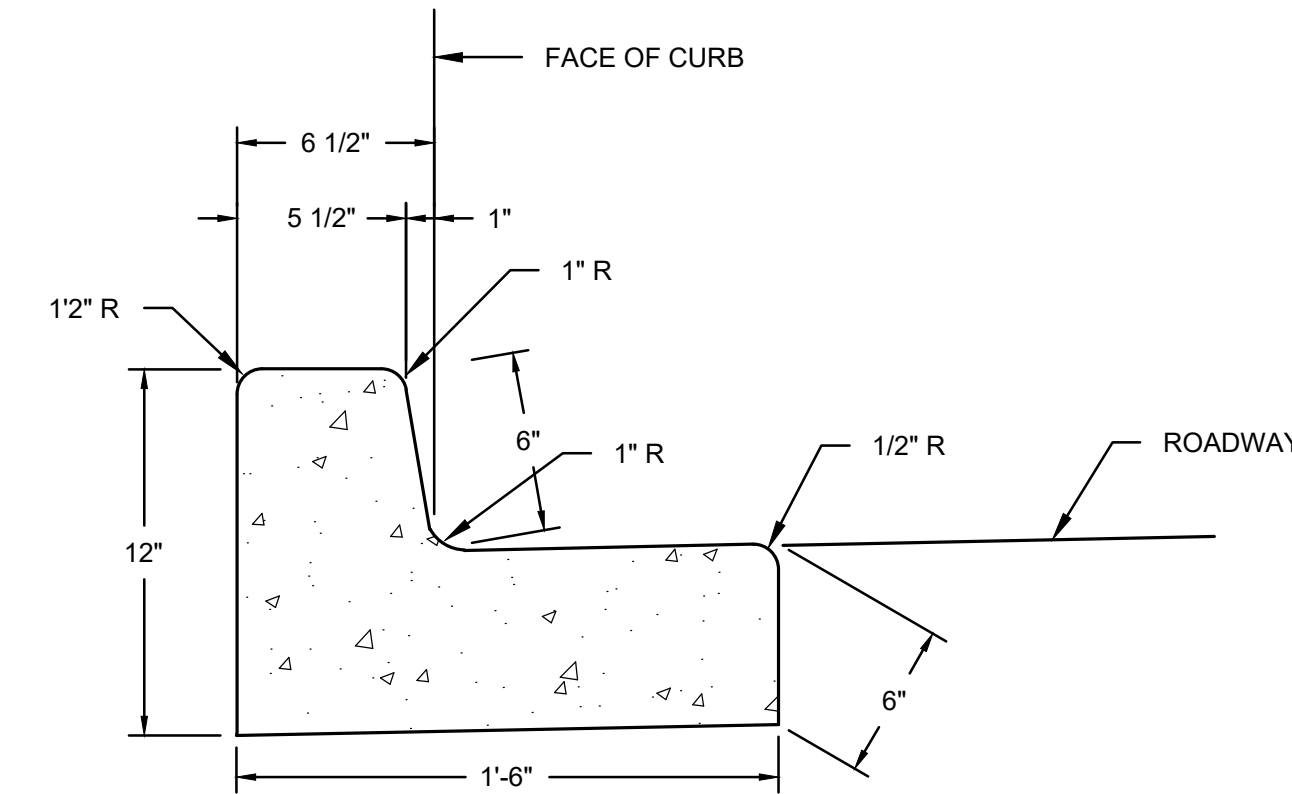
NOTES:

1. DEPTHS ARE COMPACTED THICKNESS.
2. DUMMY JOINTS CONSISTING OF 3/16" BE 2" PREMOLDED JOINT MATERIAL SHALL BE PLACED AT MAXIMUM 18 FOOT INTERVALS.
3. PROVIDE A TOOLED CONSTRUCTION JOINTS MATCHING THE JOINT LAYOUT OF THE SURROUNDING CONCRETE PAVING.
4. THE CONTRACTOR SHALL EXPOSE EXISTING FILL, PROOF ROLL AND COMPACT TO 95%. IF YIELDING CONDITIONS ARE ENCOUNTERED, YIELDING MATERIALS SHALL BE REPLACED WITH IMPORTED STRUCTURAL FILL MATERIAL. THE DEPTH OF MATERIAL REPLACEMENT SHALL BE DETERMINED BY THE GEOTECHNICAL ENGINEER.
5. FOR STANDARD DUTY CONCRETE USE 6 X 6 X 1.4 X 1.4 WELDED WIRE FABRIC REINFORCEMENT AT CENTERLINE.
6. FOR HEAVY DUTY CONCRETE USE 6 X 6 X 2.9 X 2.9 WELDED WIRE FABRIC REINFORCEMENT AT CENTERLINE.
7. FOR HEAVY DUTY CONCRETE PAVEMENT CONTRACTION AND CONSTRUCTION JOINTS PROVIDE SMOOTH DOWELS SPACED 18-INCHES O.C. THE DOWELS SHALL BE NO. 10 BAR 30-INCHES LONG.

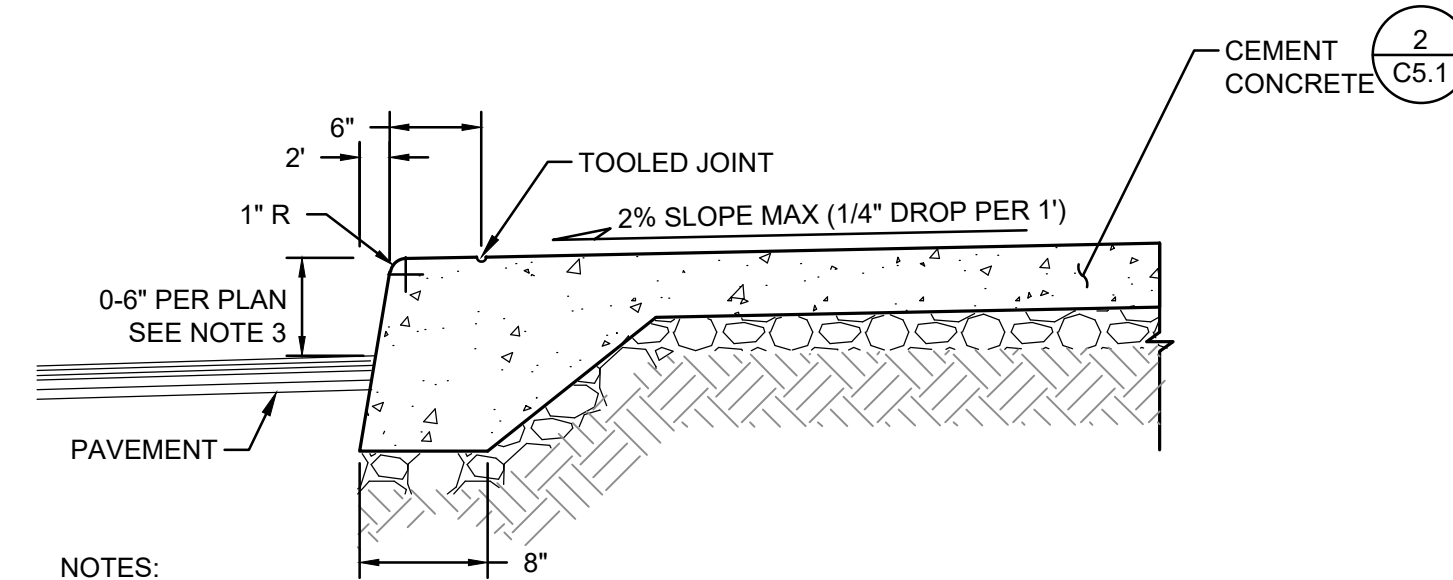
2 CONCRETE SECTION
NOT TO SCALE



6 WHEELSTOP
NOT TO SCALE



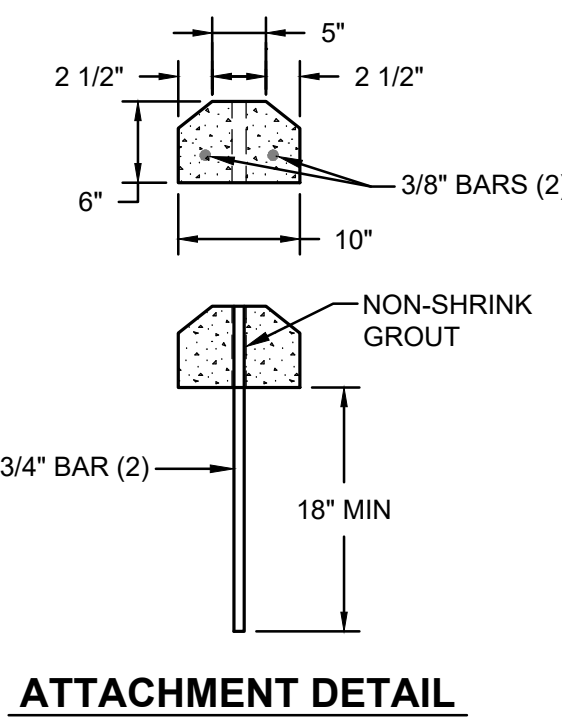
9 CURB AND GUTTER
NOT TO SCALE



NOTES:

1. SUBGRADE COMPACTION FOR CONCRETE CURB AND WALKS SHALL BE 95% OF MAXIMUM DENSITY.
2. EXPANSION JOINTS CONSISTING OF 3/16" BY 2" PREMOLDED JOINT MATERIAL SHALL BE PLACED AT 15 FOOT INTERVALS. SEALED WITH POLYURETHANE TO MATCH WALK COLOR.
3. FLUSH CURB SHALL BE 0" IN HEIGHT. TYPICAL INTEGRAL CURB VARIES PER PLAN.

3 INEGRAL CURB AND SIDEWALK
NOT TO SCALE

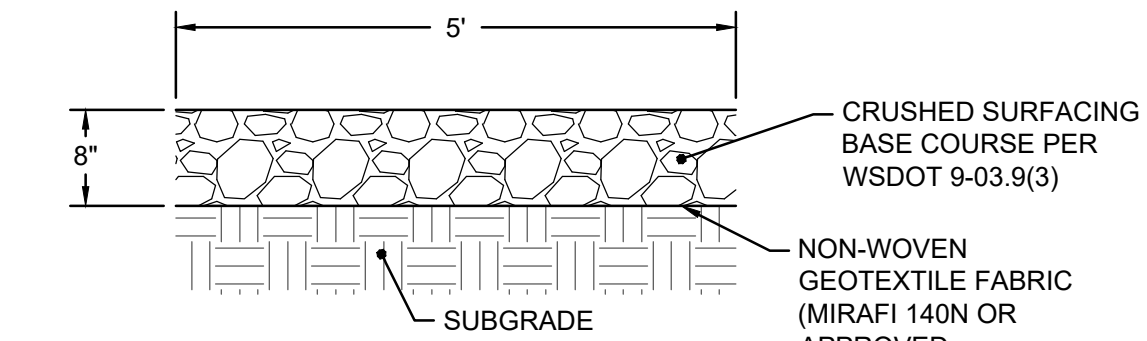


NOTES:

1. THE NON-SHRINK GROUT USED TO ATTACH THE PRECAST CURB SHALL CONSIST OF 3:1 SAND AND CEMENT. GROUT TO A DEPTH OF 1" FROM THE TOP OF THE BUMPER.
2. LOCATIONS FOR WEEPHOLES, AND V-SLOTS SHALL BE IDENTIFIED ON THE DELIVERY ORDER DRAWINGS.
3. CONCRETE SHALL HAVE A COMPRESSIVE STRENGTH OF 3000 PSI AT 28 DAYS.

ATTACHMENT DETAIL

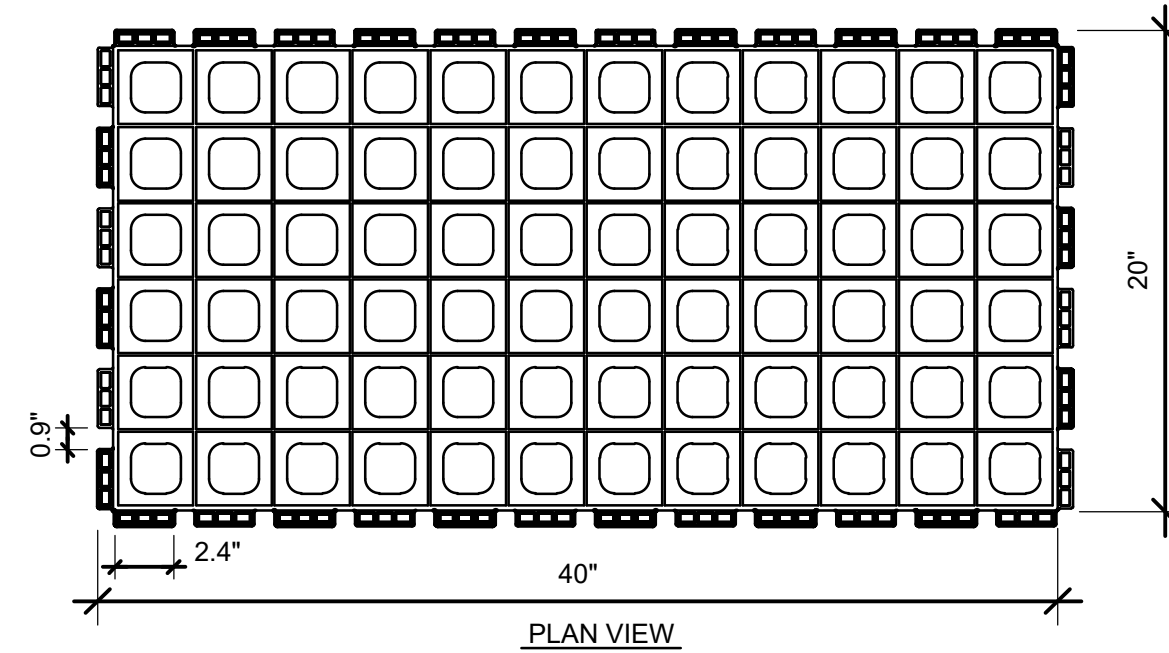
4 EXTRUDED CURB
NOT TO SCALE



NOTES:

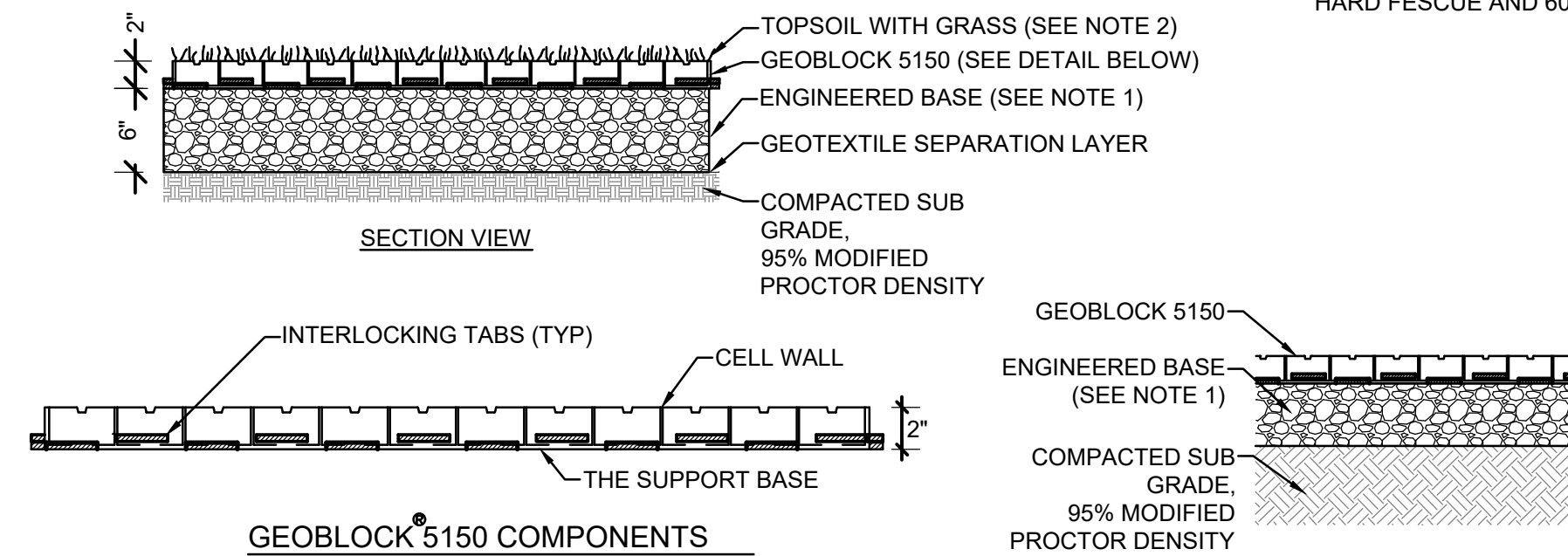
1. DEPTHS INDICATED ARE COMPACTED THICKNESSES.
2. CRUSHED SURFACING TOP COURSE AND SUBGRADE SHALL BE COMPACTED TO AT LEAST 95% MAXIMUM DRY DENSITY PER ASTM D1557. IF COMPACTION REQUIREMENT IS NOT MET, EXCAVATE AND REPLACE WITH 6" GRAVEL BASE PER WSDOT 4-02. GRAVEL BASE SHALL BE INCREASED AS REQUIRED TO ACHIEVE A FIRM AND UNYIELDING SUBGRADE.

7 GRAVEL SECTION
NOT TO SCALE



NOTES:

1. ENGINEERED BASE IS A HOMOGENOUS MIXTURE CONSISTING OF CRUSHED ROCK HAVING AN AASHTO # 5 OR SIMILAR DESIGNATION BLENDED WITH PULVERIZED TOPSOIL AND VOID COMPONENT GENERALLY CONTAINING AIR AND/OR WATER. THIS HOMOGENOUS MIXTURE WILL PROMOTE VEGETATIVE GROWTH AND PROVIDE REQUIRED STRUCTURAL SUPPORT. THE AGGREGATE PORTION SHALL HAVE A PARTICLE RANGE FROM 9.5 MM TO 25 MM (0.375 TO 1.0 IN) WITH A D50 OF 13 MM (0.5 IN). THE PERCENTAGE VOID-SPACE OF THE AGGREGATE PORTION WHEN COMPACTED SHALL BE AT LEAST 30%. THE PULVERIZED TOPSOIL PORTION SHALL EQUAL 25% +/- OF THE TOTAL VOLUME AND BE ADDED AND BLENDED TO PRODUCE A HOMOGENOUS MIXTURE PRIOR TO PLACEMENT OR WASHED INTO THE IN-PLACE COMPACTED AGGREGATE. ONCE PLACED, THE MIXTURE SHALL BE COMPACTED TO 95% STANDARD PROCTOR DENSITY.
2. GRASS TYPE SHALL BE 20% KENTUCKY BLUEGRASS, 20% HARD FESCUE AND 60% PERENNIAL RYEGRASS.



10 GRASSPAVE
NOT TO SCALE

APPROVED

BY: _____
CITY OF PUYALLUP
DEVELOPMENT ENGINEERING

DATE: _____

NOTE: THIS APPROVAL IS VOID AFTER 180 DAYS FROM APPROVAL DATE. THE CITY WILL NOT BE RESPONSIBLE FOR ERRORS AND/OR OMISSIONS ON THESE PLANS. FIELD CONDITIONS MAY DICTATE CHANGES TO THESE PLANS AS DETERMINED BY THE DEVELOPMENT ENGINEERING MANAGER.

integrus
ARCHITECTURE

AHBL
A C O M A - SEATTLE - SPOKANE - TRICITIES
2215 North 30th Street, Suite 300 Tacoma, WA 98403
253.383.2422 Tel. 253.383.2572 Fax www.ahbl.com 168

WILLIAM J. FIERST
STATE OF WASHINGTON
1800 5TH AVENUE
PROFESSIONAL ENGINEER
10/24/2022

STATE PROJECT NO.: 2020-148
PIERCE COLLEGE PUYALLUP
NEW STEM BUILDING
1601 39th AVE SE
Puyallup, WA 98374

Date: 10/25/22
Job No.: 22135.00
Drawn By: C. HOVDE
Checked by: W. FIERST

Revisions		
#	Date	Description
1	08/19/22	PERMIT RESUBMITTAL
2	10/25/22	PERMIT RESUBMITTAL

PAVEMENT NOTES AND DETAILS

C5.1

NOTICE
ALTERATION OF THIS DOCUMENT SHALL MAINTAIN THE PROFESSIONAL SEAL AND SIGNATURE. REPRODUCTION OF THIS DOCUMENT DOES NOT CONSTITUTE FROM REPRODUCING OR USING IT IN ANY MANNER. THIS DOCUMENT IS FOR USE ONLY FOR THE PROJECT IDENTIFIED IN THE TITLE. REUSE OR ALTERATION OF THIS DOCUMENT IS PROHIBITED. REPRODUCTION OR ALTERATION OF THIS PROJECT OR FOR ANY OTHER PROJECT.