

FIRE ALARM LEGEND

Device Legend	
[FACP]	Fire Alarm Control Panel
[FAA]	Fire Alarm Annunciator
[PS]	Power Supply
[S]	Smoke Detector
[F]	Pull Station
[R]	Relay Module
[T]	Tamper Switch
[JPC]	Jockey Pump Controller
[X]	Wall Mount Strobe
[X]	Ceiling Mount Strobe
[X]	Wall Mount Horn Strobe
[X]	Ceiling Mount Horn Strobe
[X]	Mini Horn
[B]	Exterior Bell
[FPC]	Fire Pump Controller
[WP]	Weather Proof
[LVS]	Sprinkler Valve Supervisory Switch
[WFS]	Sprinkler Flow Switch
[S]	Wall Mounted Smoke Detector
[NADSD]	Non Addressable Heat Detector
[K]	Fire Fighter Phone
[HSC]	Hand Set Center
[SB]	Smoke Beam
[MM]	Mini Module

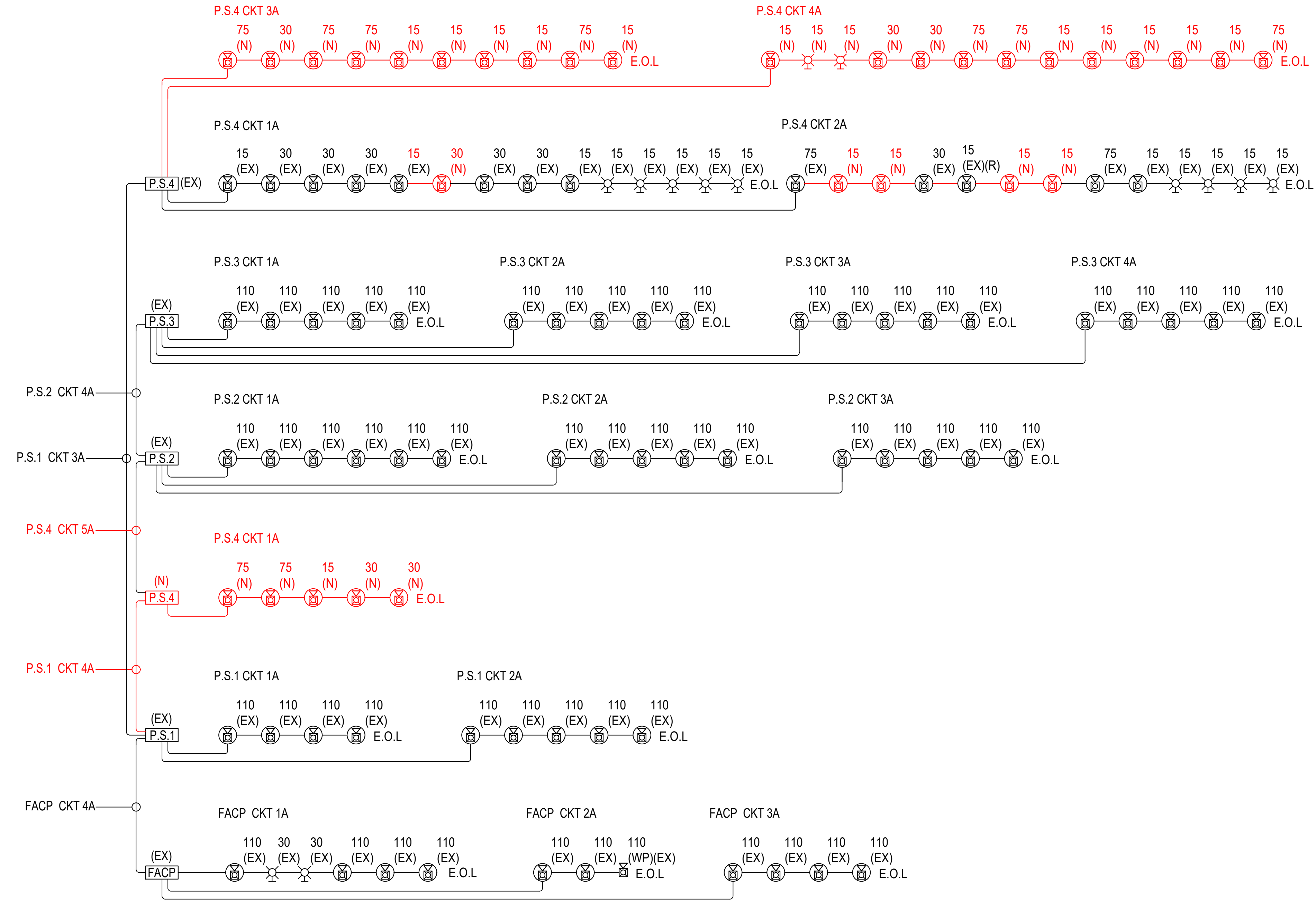
Wiring Legend	
#	Denotes Ckt. Number
A	14 Gauge 2 Conductor FPLP
B	18 Gauge 2 Conductor FPLP
C	16 Gauge 4 Conductor FPLP

Typical Mounting Height	
[FACP]	60" To ϕ AFF
[FAA]	60" To ϕ AFF
[F]	46" To ϕ AFF
[R]	48" To ϕ AFF
[X]	80" To ϕ AFF
[X]	80" To ϕ AFF
[PS]	60" To ϕ AFF
[S]	4"-12"(MAX) To ϕ From Ceiling
[WFS]	8'-10"(MAX) To ϕ From Floor

Notes	
1.	
2.	
3.	
4.	

DRAWING INDEX

FA1	COVER PAGE
FA2	FIRE ALARM SLC RISER DIAGRAM
FA3	BATTERY CALCULATIONS
FA4	WAREHOUSE NAC LAYOUT
FA5	WAREHOUSE SLC LAYOUT
FA6	WAREHOUSE SMOKE DETECTOR LAYOUT
FA7	FIRE ALARM OFFICE NAC LAYOUT
FA8	FIRE ALARM OFFICE SLC LAYOUT
FA9	FIRE ALARM ELECTRICAL/RISER ROOM DETAIL



1 FIRE ALARM NAC RISER DIAGRAM
N.T.S.

CONTROL LINE	NOTIFICATION	MARK
PULL STATION		
WATERFLOW		
SPRINKLER VALVE TAMPER		
FAC/LOW BATTERY		
FAC/PC FAILURE		
IRVAC/DUCT DETECTOR		
OPEN CIRCUIT		
GROUND FAULT		
WIRE TO WIRE SHORT		
PHONE LINE LOSS		
PUMP MONITORING		

2 OPERATIONS MATRIX
N.T.S.

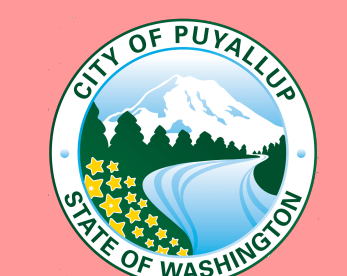
City of Puyallup
Fire
REVIEWED FOR COMPLIANCE
DDrake
11/21/2022
9:36:32 AM

THE APPROVED CONSTRUCTION PLANS AND ALL ENGINEERING MUST BE POSTED ON THE JOB AT ALL INSPECTIONS IN A VISIBLE AND READILY ACCESSIBLE LOCATION.

Approval of submitted plans is not an approval of omissions or oversight by this office or noncompliance with any applicable regulations of local government. The contractor is responsible for making sure that the building complies with all applicable building codes and regulations of the local government.

City of Puyallup
Development & Permitting Services
ISSUED PERMIT

Building	Planning
Engineering	Public Works
Fire	Traffic



OLSEN ELECTRIC INC.
Kevin Olsen
Level III, ET (Engineering Technician)
Certification # 145198 Exp. 7/01/2023

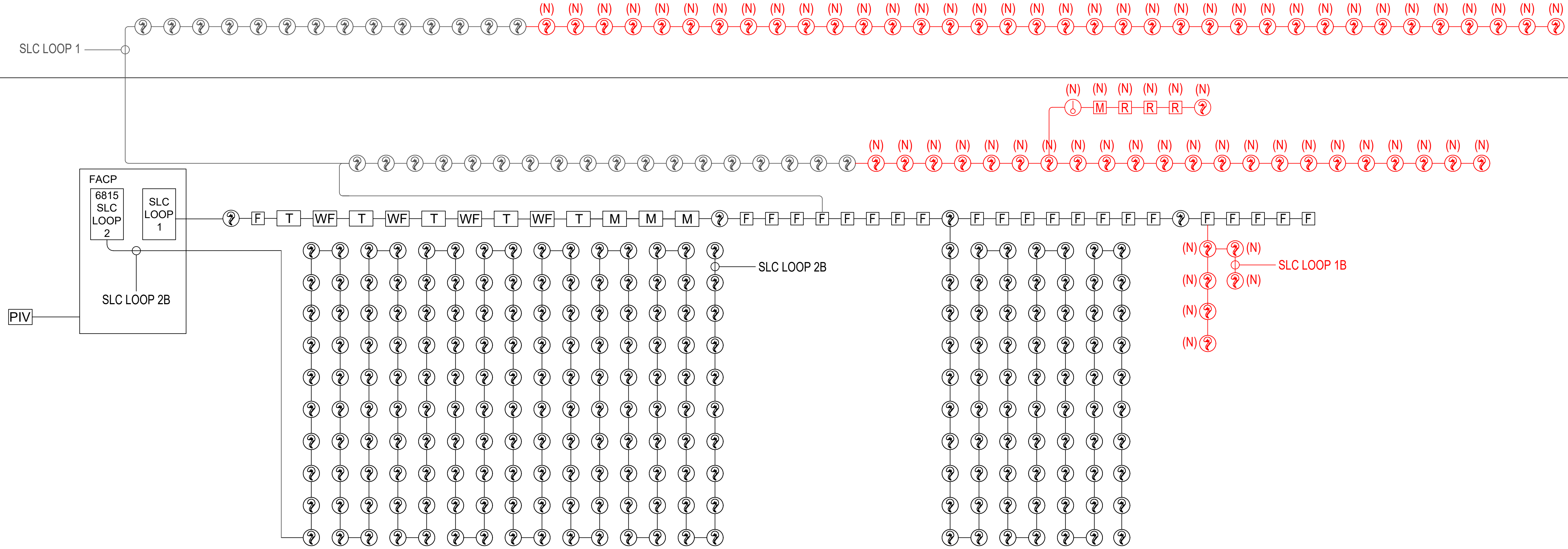
Revisions:	
Rev	Date
1	8/6/22
2	11/9/22

8/8/2022
Drawn By: RS
Sheet Number: FA1

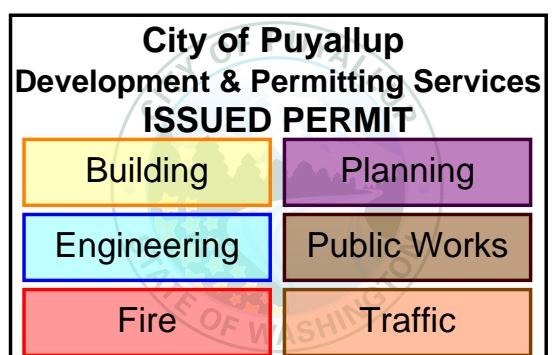
LEVEL 2

SLC LOOP 1

LEVEL 1



① FIRE ALARM SLC RISER DIAGRAM
N.T.S



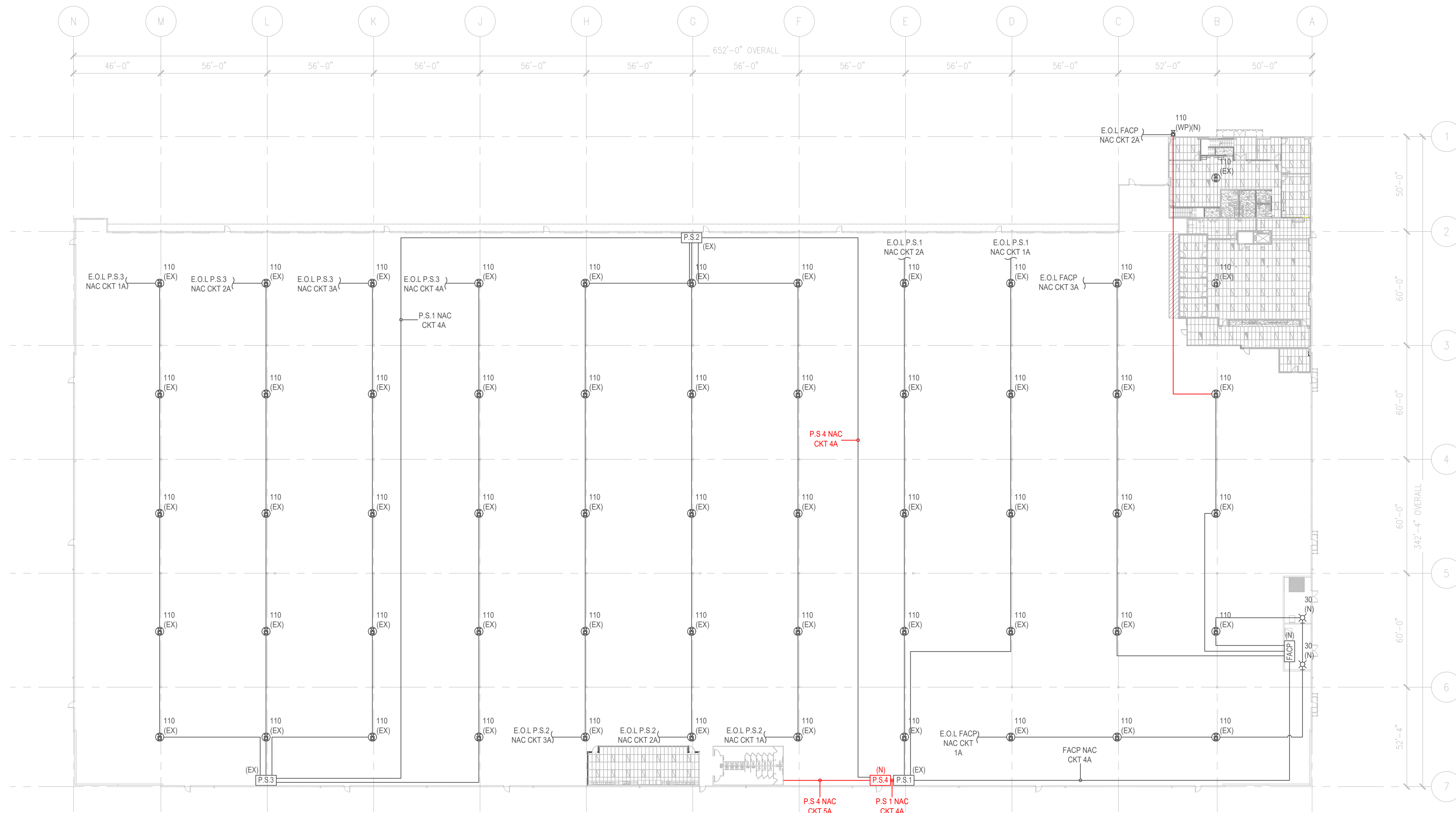
OLSEN ELECTRIC INC.
Kevin Olsen
Level III, ET (Engineering Technician)
Certification # 145198 Exp. 7/01/2023

OLSEN ELECTRIC INC.
Commercial ~ Industrial
Phone (253)-872-1905
Fax (253)-269-0268
325 Washington Ave S #91
Kent, WA 98032

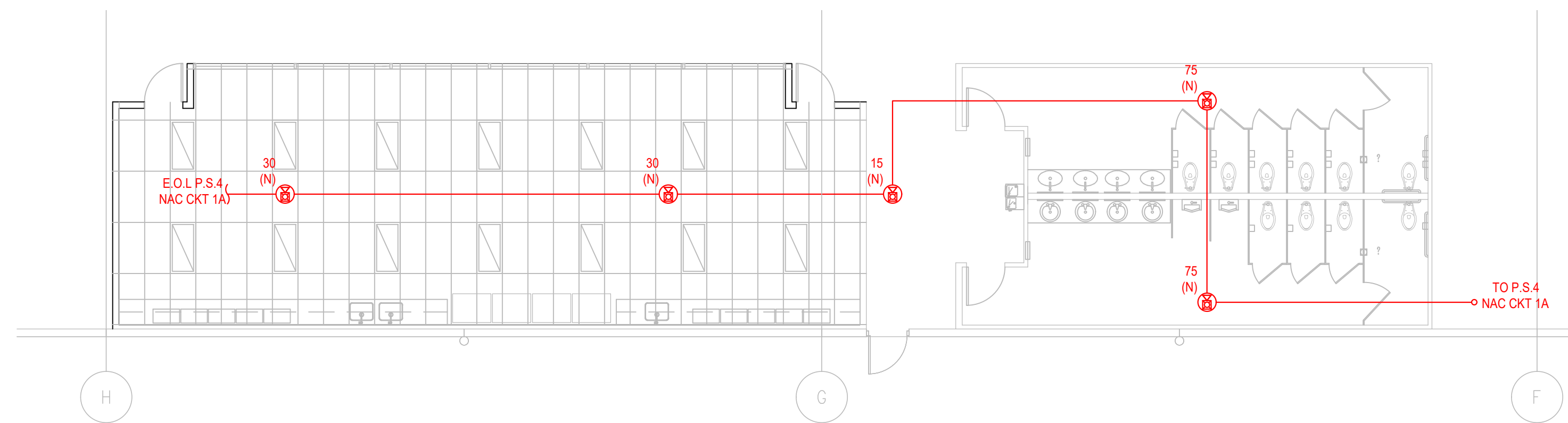
RED DOT TI
2504 E. MAIN AVENUE
PUYALLUP, WA 98372

Revisions:	
Rev	Description
1	SHOP
2	SHOP
8/8/2022	
8/8/2022	
8/8/2022	

8/8/2022
Drawn By: RS
Sheet Number: FA2



1 FIRE ALARM WAREHOUSE NAC LAYOUT
1/32" = 1'-0"



2 WAREHOUSE RESTROOMS NAC DETAIL
1/8" = 1'-0"

City of Puyallup
Development & Permitting Services
ISSUED PERMIT

Building	Planning
Engineering	Public Works
Fire	Traffic

OLSEN
ELECTRIC INC.
Kevin Olsen
Level III, ET (Engineering Technician)
Certification # 145198 Exp. 7/01/2023

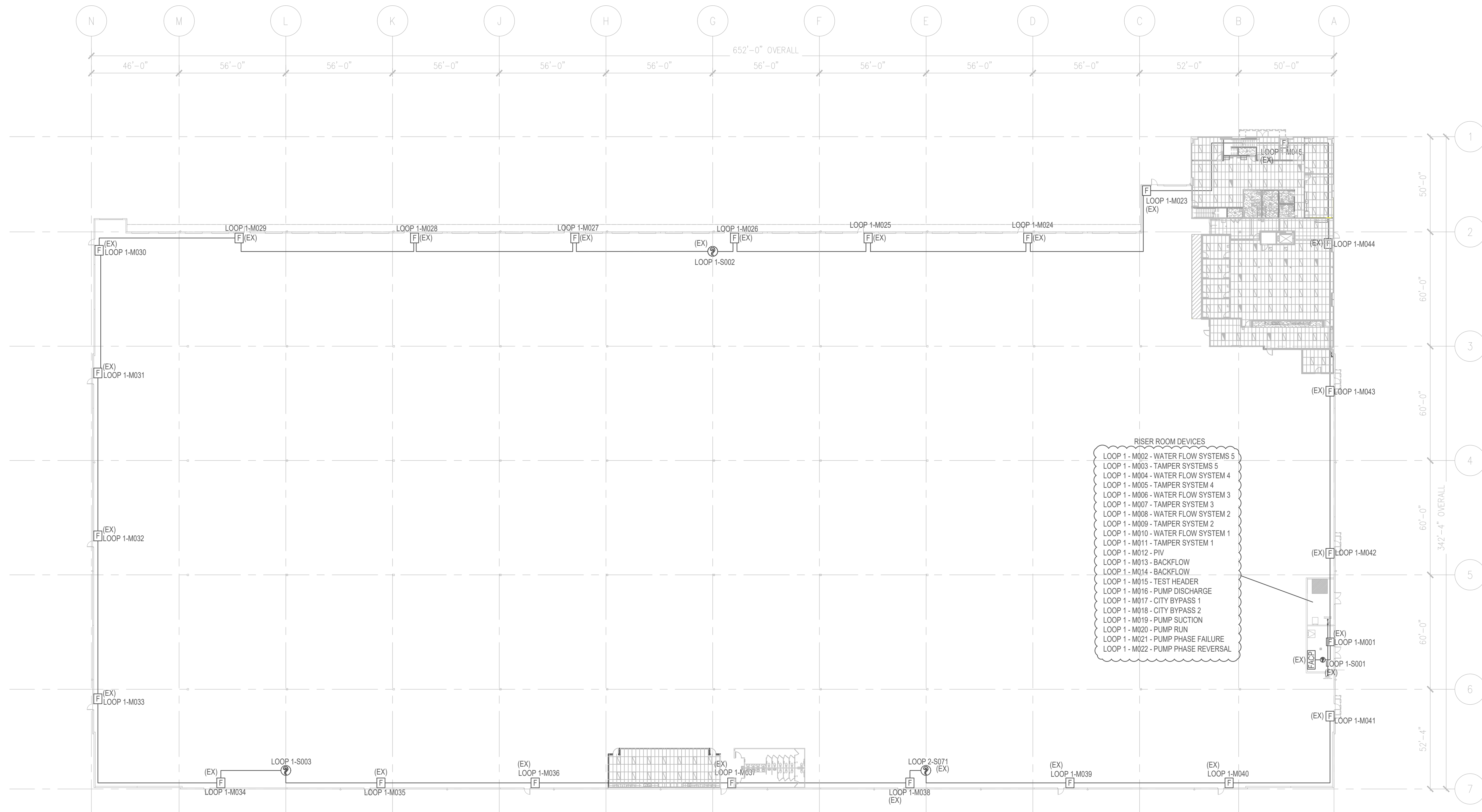
OLSEN
ELECTRIC INC.
Commercial ~ Industrial
325 Washington Ave S #91
Kent, WA 98032
Phone (253)-872-1905
Fax (253)-269-0268

RED DOT TI
2504 E. MAIN AVENUE
PUYALLUP, WA 98372

Revisions:

Rev	Date	By	Description
1	8/6/22	CM	SHOP
2	11/9/22	RS	SHOP

8/8/2022
Drawn By: RS
Sheet Number: FA4



1 FIRE ALARM SLC WAREHOUSE LAYOUT
1/32"=1'-0"

City of Puyallup
Development & Permitting Services
ISSUED PERMIT

Building	Planning
Engineering	Public Works
Fire	Traffic

OLSEN
ELECTRIC INC.
Kevin Olsen
Level III, ET (Engineering Technician)
Certification # 145198 Exp. 7/01/2023

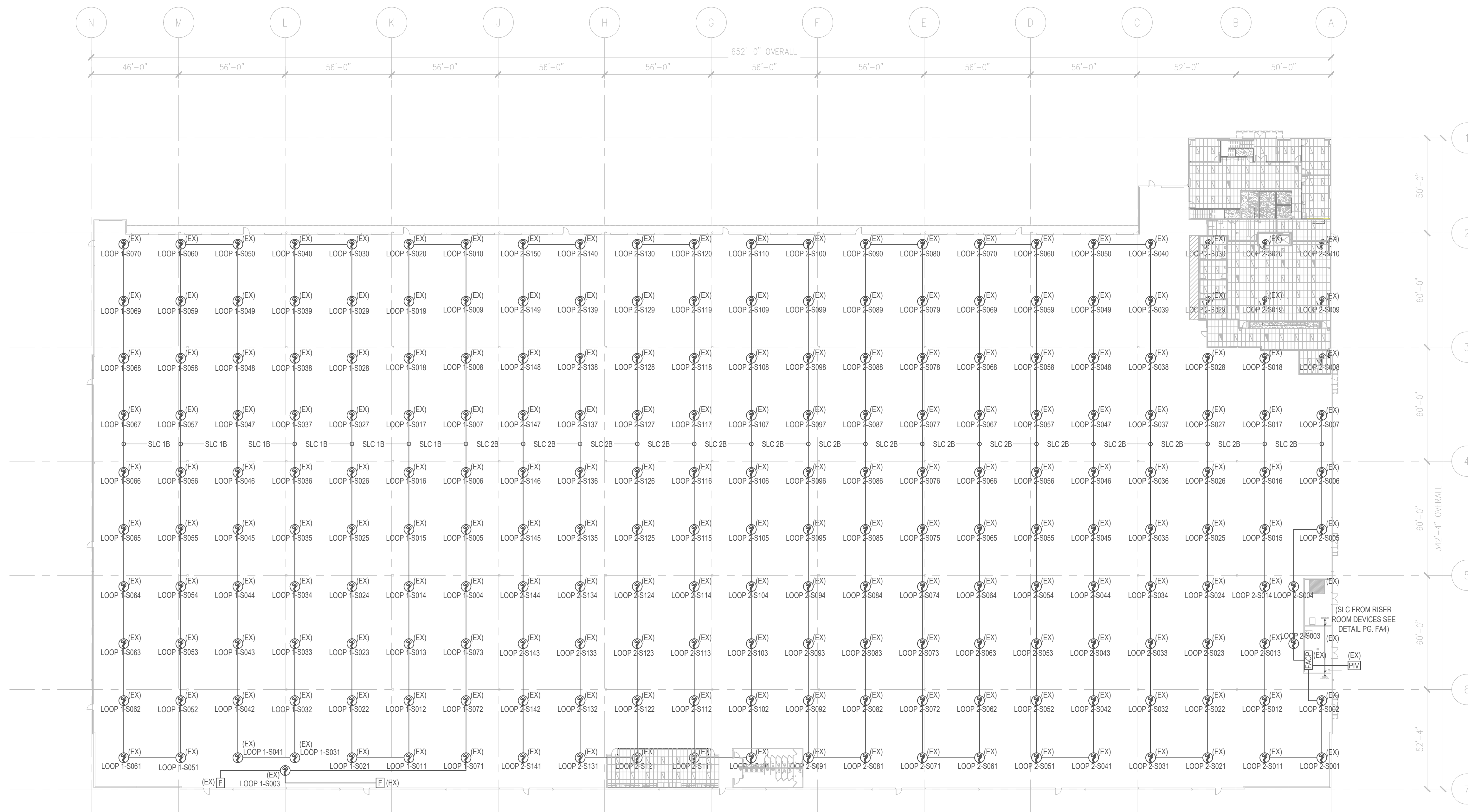
OLSEN
ELECTRIC INC.
Commercial ~ Industrial
Phone (253)-872-1905
Fax (253)-269-0268
325 Washington Ave S #91
Kent, WA 98032

RED DOT TI
2504 E. MAIN AVENUE
PUYALLUP, WA 98372

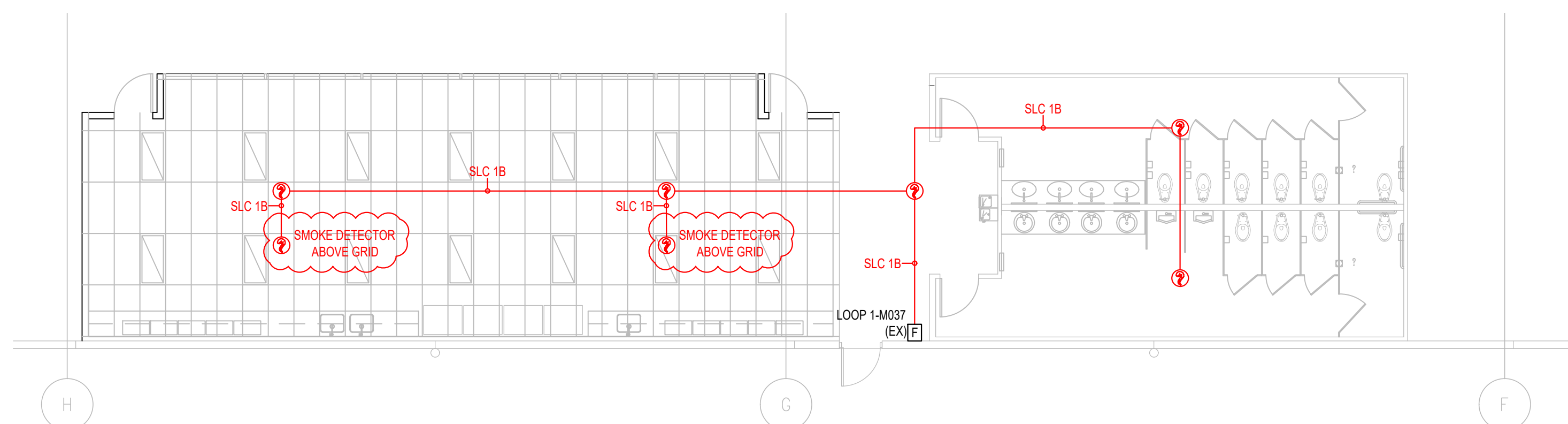
Rev	Date	By	Description
1	8/8/22	CM	SHOP
2	11/9/22	RS	SHOP

Revisions:

8/8/2022
Drawn By: RS
Sheet Number: FA5



1 FIRE ALARM WAREHOUSE SMOKE DETECTOR LAYOUT
1/32"=1'-0"



2 WAREHOUSE RESTROOMS SLC DETAIL
1/8"= 1'-0"

City of Puyallup
Development & Permitting Services
ISSUED PERMIT

Building	Planning
Engineering	Public Works
Fire	Traffic

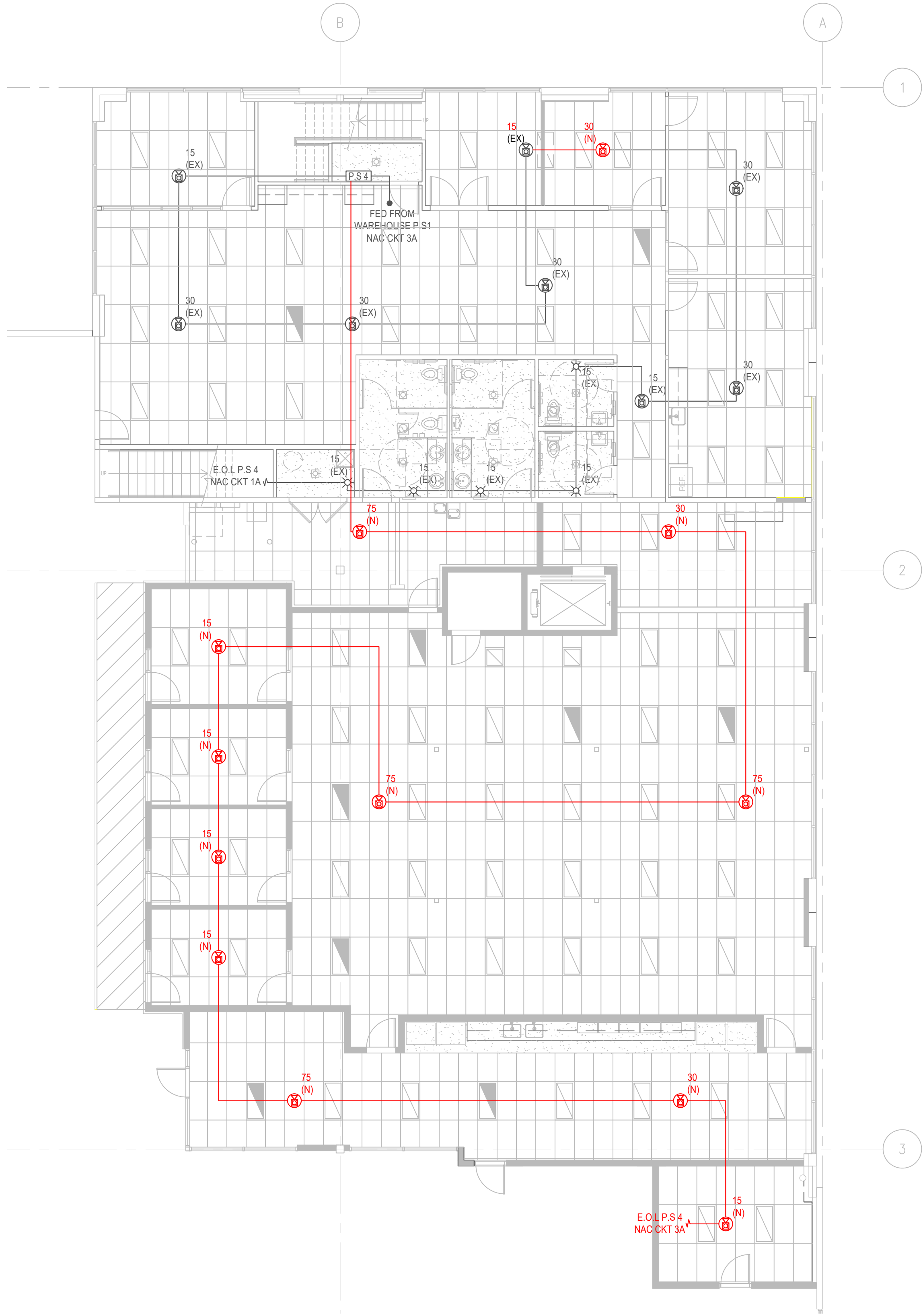
OLSEN
ELECTRIC INC.
Kevin Olsen
Level III, ET (Engineering Technician)
Certification # 145198 Exp. 7/01/2023

OLSEN
ELECTRIC INC.
Commercial ~ Industrial
325 Washington Ave S #91
Kent, WA 98032
Phone (253)-872-1905
Fax (253)-269-0268

RED DOT TI
2504 E. MAIN AVENUE
PUYALLUP, WA 98372

Revisions:	
Rev	Description
1	SHOP
2	SHOP

8/8/2022
Drawn By: RS
Sheet Number: FA6



1 FIRE ALARM OFFICE 1ST FLOOR NAC LAYOUT
1/8"=1'-0"

2 FIRE ALARM OFFICE 2ND FLOOR NAC LAYOUT
1/8"=1'-0"

City of Puyallup
Development & Permitting Services
ISSUED PERMIT

Building	Planning
Engineering	Public Works
Fire	Traffic

OLSEN
ELECTRIC INC.
Kevin Olsen
Level III, ET (Engineering Technician)
Certification # 145198 Exp. 7/01/2023

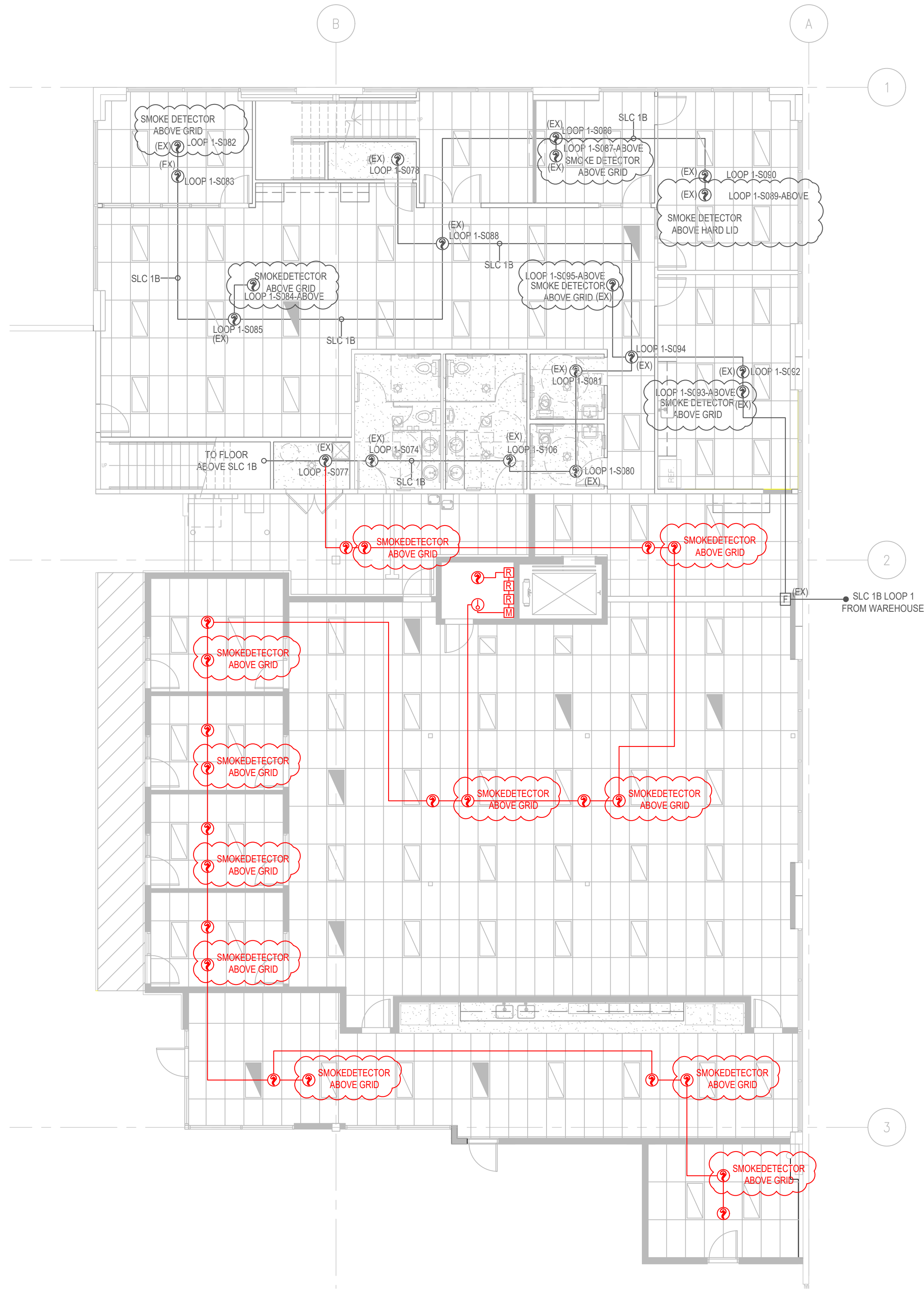
OLSEN
ELECTRIC INC.
Commercial ~ Industrial
Phone (253)-872-1905 325 Washington Ave S #91
Fax (253)-269-0268 Kent, WA 98032

RED DOT TI
2504 E. MAIN AVENUE
PUYALLUP, WA 98372

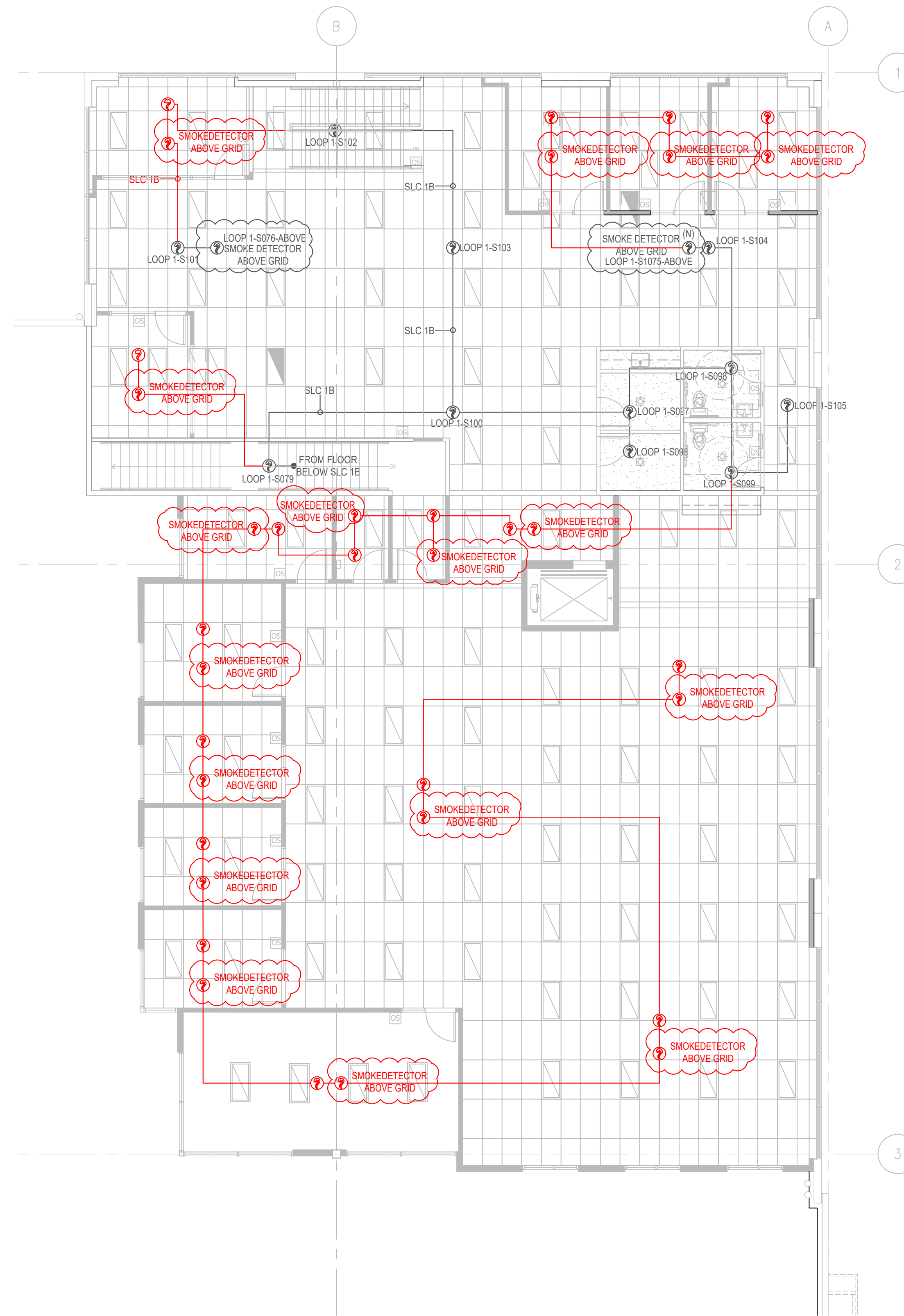
Revisions:

Rev	Date	By	Description
1	8/6/22	CM	SHOP
2	11/9/22	RS	SHOP

8/8/2022
Drawn By: RS
Sheet Number: FA7



1 FIRE ALARM OFFICE 1ST FLOOR SMOKE DETECTOR LAYOUT
1/8"=1'-0"



2 FIRE ALARM OFFICE 2ND FLOOR SMOKE DETECTOR LAYOUT
1/8"=1'-0"

City of Puyallup
Development & Permitting Services
ISSUED PERMIT

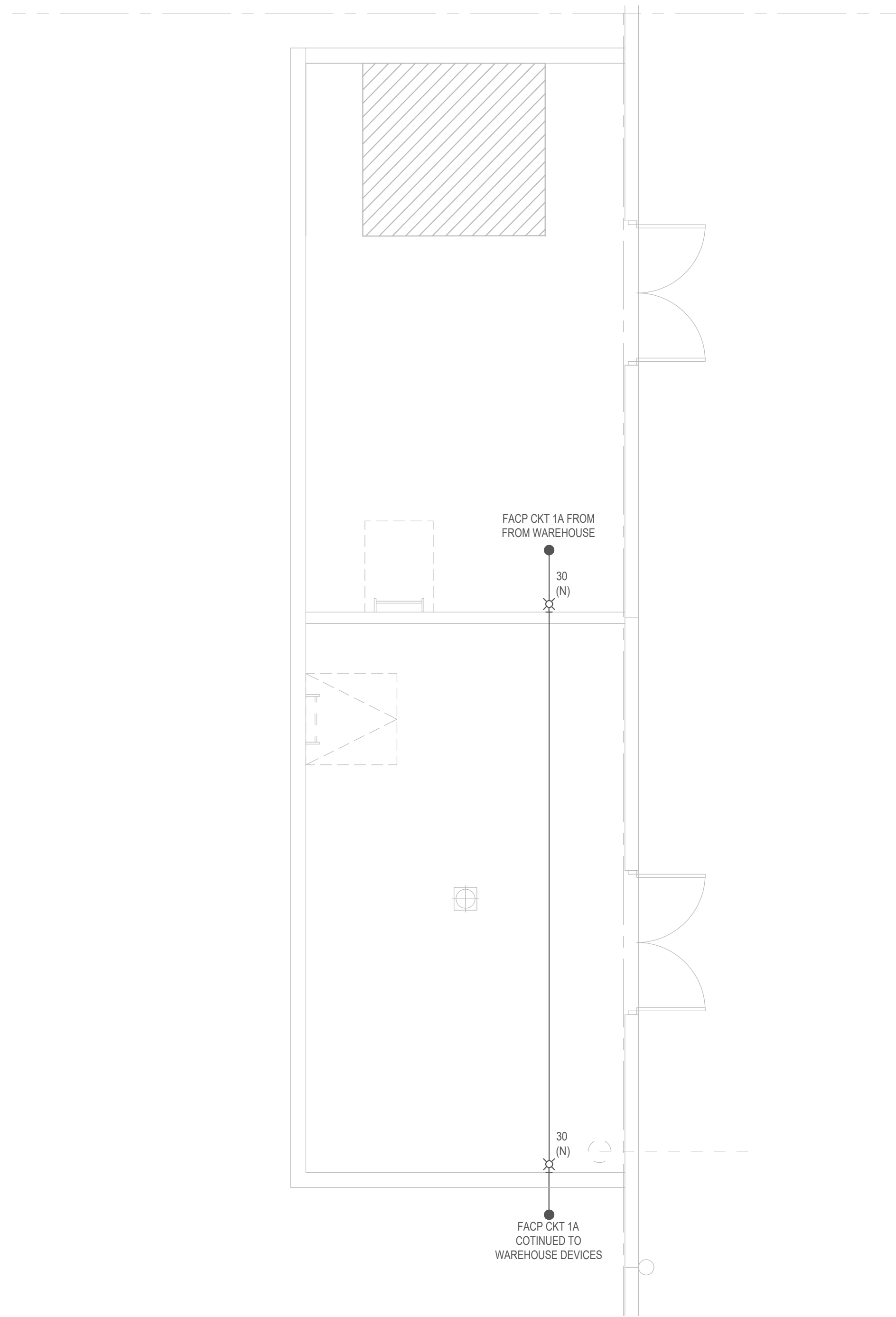
Building	Planning
Engineering	Public Works
Fire	Traffic

OLSEN
ELECTRIC INC.
Kevin Olsen
Level III, ET (Engineering Technician)
Certification # 145198 Exp. 7/01/2023

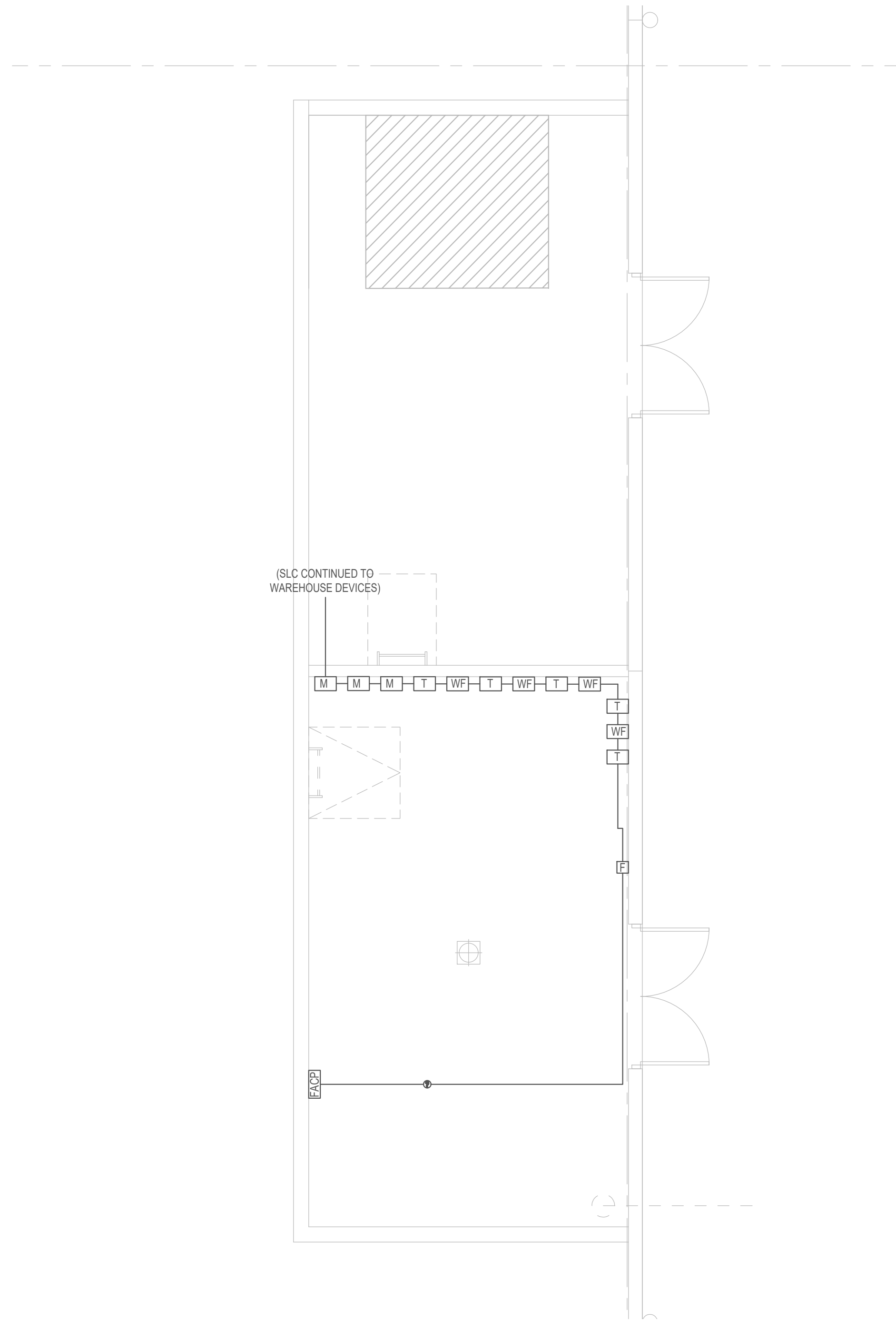
OLSEN
ELECTRIC INC.
Commercial ~ Industrial
325 Washington Ave S #91
Kent, WA 98032
Phone (253)-872-1905
Fax (253)-269-0268

RED DOT TI
2504 E. MAIN AVENUE
PUYALLUP, WA 98372

Revisions:	
Rev	Description
1	SHOP
2	SHOP
8/5/2022	8/5/2022
By	Drawn By: RS
CM	Sheet Number:
RS	
	FA8



① ELECTRICAL RISER ROOM NAC DETAIL
1/4"=1'-0"



② ELECTRICAL RISER ROOM SLC DETAIL
1/4"=1'-0"

City of Puyallup
Development & Permitting Services
ISSUED PERMIT

Building	Planning
Engineering	Public Works
Fire	Traffic

OLSEN
ELECTRIC INC.
Kevin Olsen
Level III, ET (Engineering Technician)
Certification # 145198 Exp. 7/01/2023

RED DOT TI
2504 E. MAIN AVENUE
PUYALLUP, WA 98372

OLSEN
ELECTRIC INC.
Commercial ~ Industrial
Phone (253)-872-1905 325 Washington Ave S #91
Fax (253)-269-0268 Kent, WA 98032

Rev	Date	By	Description
1	8/5/22	CM	SHOP
2	11/9/22	RS	SHOP
			8/5/2022
			Drawn By: RS
			Sheet Number: FA9