

GENERAL NOTES:

- A. STORAGE CAPACITY SIGNS**
- PER RMI 1.4.2, ONE OR MORE PLAQUES WILL BE PLACED CONSPICUOUSLY IN CLEAR AND LEGIBLE MANNER TO IDENTIFY EACH DIFFERENT RACK CONFIGURATION.
 - EACH PLAQUE TO BE A MINIMUM OF 50 SQUARE INCHES. IT IS THE OWNERS RESPONSIBILITY TO ENSURE THE RACK SYSTEM IS NOT ALTERED SO THAT THE PLAQUE INFORMATION IS INVALIDATED.
 - EACH PLAQUE TO DISPLAY:
 - THE MAXIMUM PERMISSIBLE LOAD AND/OR THE MAXIMUM DISTRIBUTED LOAD PER LEVEL
 - THE AVERAGE LOAD IF APPLICABLE AND
 - MAXIMUM TOTAL LOAD PER BAY.
- B. ANCHORING/HARDWARE**
- PER IBC, SPECIAL INSPECTION IS REQUIRED FOR THE INSTALLATION OF ANCHOR BOLTS.
 - ANCHOR SIZE, PLACEMENT, AND EMBEDMENT SPECIFIED BY A LICENSED PROFESSIONAL STRUCTURAL ENGINEER.
 - PER IBC, PERIODIC SPECIAL INSPECTION IS REQUIRED FOR THE INSTALLATION OF CONCRETE ANCHOR BOLTS OF STORAGE RACKS 8 FEET OR GREATER FOR STRUCTURES ASSIGNED TO SEISMIC DESIGN CATEGORIES D, E, OR F.
 - HARDWARE OTHER THAN ANCHORS TO BE SPECIFIED BY A LICENSED PROFESSIONAL STRUCTURAL ENGINEER.
- D. MAINTENANCE**
- THE OWNER SHALL MAINTAIN THE STRUCTURAL INTEGRITY OF THE RACK SYSTEM BY ASSURING PROPER OPERATIONAL, HOUSEKEEPING, AND MAINTENANCE PROCEDURES, INCLUDING BUT NOT LIMITED TO THE FOLLOWING:
 - PROHIBIT ANY OVER LOADING OF ANY PALLET POSITIONS AND OF THE OVERALL RACK SYSTEM
 - REGULAR INSPECTIONS FOR DAMAGE. IF DAMAGED COLUMNS OR BEAMS ARE FOUND, IMMEDIATELY UNLOAD THE AFFECTED AREA AND REPLACE OR REPAIR ANY DAMAGED COLUMNS, BEAMS, OR OTHER STRUCTURAL COMPONENTS.
 - REQUIRE ALL PALLETS BE MAINTAINED IN GOOD, SAFE OPERATING CONDITION.
 - ENSURE THAT PALLETS ARE PROPERLY PLACED ONTO PALLET LOAD SUPPORT MEMBERS IN STACKED AND STABLE POSITIONS.
 - ALL GOODS STORED ON EACH PALLET ARE STACKED AND IN STABLE POSITIONS.
 - ENSURE THAT THE RACKS ARE NOT MODIFIED OR REARRANGED IN A MANNER NOT WITHIN THE ORIGINAL DESIGN CONFIGURATIONS.
 - IF CONFIGURATION CHANGES ARE REQUIRED, NEW STRUCTURAL ANALYSIS MUST BE PERFORMED TO ENSURE PROPER LOADING.
 - THE MAXIMUM TOP TO BOTTOM OUT-OF-PLUMB RATIO AND OUT-OF-STRAIGHT RATIO PER RACK COLUMN IS 1/240 (FOR EXAMPLE 1/2" PER 10 FEET OF HEIGHT). COLUMNS WHOSE OUT-OF-PLUMB RATIO OR OUT-OF-STRAIGHT RATIO EXCEEDS THIS LIMIT SHOULD BE UNLOADED AND RE-PLUMBED. ANY DAMAGES PARTS MUST BE REPAIRED OR REPLACED.

- E. CONFIGURATION CHANGES**
- THIS SET OF DRAWINGS SHOWS ALL THE PERMISSIBLE CONFIGURATIONS OF THESE COMPONENTS PER THIS PERMITTED DRAWING SET. OTHER CONFIGURATIONS MAY PERMITTED UPON REVIEW OF THE ENGINEER OF RECORD FOR THIS PROJECT AND REVISIONS TO THE DRAWING ACCORDINGLY.
 - ANY CHANGES TO THE CONFIGURATION OF THE RACK SYSTEM COMPONENTS INCLUDING RELOCATION OR REMOVAL OF THE SHELF BEAM OR ANY OTHER COMPONENTS WITHOUT PERMISSION IS NOT PERMITTED

STORAGE RACKING

TENANT IMPROVEMENT FOR: RED DOT CORPORATION

RED DOT CORPORATION

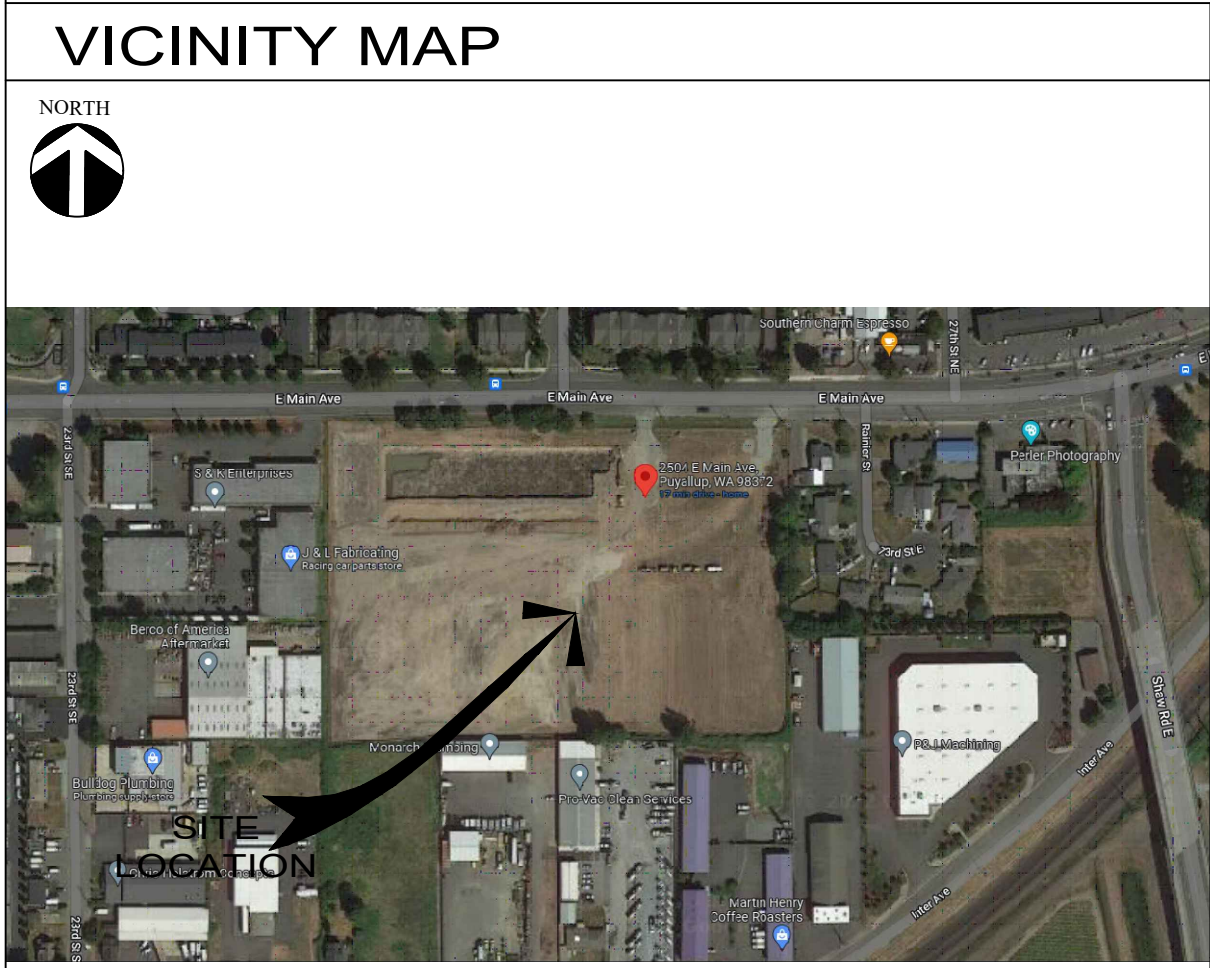
2504 EAST MAIN

PUYALLUP, WA 98372

PROJECT OVERVIEW / GENERAL NOTES:

PROPOSED SCOPE OF WORK IS THE INSTALLATION OF PRE-MANUFACTURED WAREHOUSE STORAGE RACKING FOR TENANT RED DOT CORPORATION. THERE IS HIGH PILED STORAGE IN SCOPE.

- Provide load limit placards per engineering design.
- Provide and maintain flue spacing as required by the FPE report.
- Provide special inspection reports and inspection per the engineering design. WABO certified special inspectors are required.
- No storage on racking until approved for storage and inspections are complete.



VICINITY MAP		PROJECT/SITE INFORMATION		SHEET INDEX		PROJECT TEAM	
		ASSESSORS PARCEL NUMBER	2623049094	SHEET #	SHEET DESCRIPTION	PROPERTY OWNER	
		TYPE OF CONSTRUCTION	III-B	SS1	TITLE SHEET	IDIL PUYALLUP	
		NUMBER OF STORIES	1	SS2	SITE PLAN	AARON SCHERER	
		OCCUPANCY	S-1&F-1	SS3	FLOOR PLAN	840 APOLLO ST, SUITE 343	
		FIRE SPRINKLERED	YES	SS4	EGRESS PLAN	EL SEGUNDO, CA	
		BUILDING AREA	200,000	SS5	SPRINKLER PLANS 1	657-327-2441	
		WAREHOUSE SQ. FT.	188,000	SS6	SPRINKLER PLANS 2	AARON.SCHERER@IDIOLOGISTICS.COM	
		OFFICE SQ. FT.	8,500	SS7	STRUCTURAL DETAIL	CLIENT	
		SCOPE SQ. FT.	21,500			RED DOT CORPORATION	
						2504 EAST MAIN	
						PUYALLUP, WA 98372	
						206-575-3840	
						CONTACTOR:	
						RAYMOND WEST	
						6607 287TH ST.	
						AUBURN, WA 98001	
						PHONE: 1.888.820.8811	
						ENGINEER:	
						SEIZMIC INC.	
						1130 E. CYPRESS ST.	
						COVINA, CA 91724	
						909.869.0989	
		APPLICABLE CODES 2018 INTERNATIONAL BUILDING CODE 2018 INTERNATIONAL FIRE CODE		DEFERRED SUBMITTALS			

Project Name
Facility Relocation: Red Dot Corp.
Puyallup Corporate Park

APPROVED as noted **REJECTED**

REVISE **NOT REVIEWED**

BY Kyle Leadon, PE **DATE** 11/29/2022

SUBMITTAL# High-piled Storage SPEC IFC 2018

This review is only for general conformance of Contract requirements and is not intended to authorize any design or installation that is not in conformance with the fire protection or the safety codes, standards, or design guides adopted for this project. Corrections or comments made on these drawings during this review do not relieve Contractor/Subcontractor from compliance with requirements of the plans and specifications. Contractor is responsible for all dimensions and fabrication to be confirmed and created at the job site.



Approved as noted: High-piled combustible storage shall be provided in accordance with IFC 201. This review focused on the proposed storage arrangement(s), including rack storage, commodity classification, and general requirements as it relates to the fire sprinkler design criteria. Note that this review did not include a structural analysis or calculations.

PRCTI20221624

THE APPROVED CONSTRUCTION PLANS, DOCUMENTS AND ALL ENGINEERING MUST BE POSTED ON THE JOB AT ALL INSPECTIONS IN A VISIBLE AND READILY ACCESSIBLE LOCATION.

FULL SIZED LEDGIBLE COLOR PLANS ARE REQUIRED TO BE PROVIDED BY THE PERMITEE ON SITE FOR INSPECTION

City of Puyallup
Development & Permitting Services
ISSUED PERMIT

Building	Planning
Engineering	Public Works
Fire	Traffic

City of Puyallup Building ACCEPTED

JMontgomery
11/04/2022
11:22:28 AM

RAYMOND WEST
INTRALOGISTICS SOLUTIONS

https://raymondwest.com

SEATTLE, WA
6607 287TH ST.
AUBURN, WA 98001
PHONE: 1.888.820.8811

REV. NO.	DESCRIPTION:	REV. DATE:	REV. BY:
1	INITIAL RELEASE	09/14/2022	JON TOSKI
2	CITY CORRECTIONS MADE	11/10/2022	JON TOSKI

CUSTOMER:

RED DOT CORPORATION

2504 EAST MAIN
PUYALLUP, WA 98372

SHEET NAME:

TITLE SHEET

STRUCTURAL STAMP

EXPIRES
04-12-2024

All dimensions are to be field verified by the customer. Raymond West assumes no responsibility for incorrect dimensions, location of lights or other equipment outside of Raymond West's scope of work.

This drawing is the property of Raymond West and is only to be used only by the party described in the "Customer" section and then only in connection with the services of systems. Clipping in part or as a whole is prohibited. This is subject to a Confidentiality Agreement between Raymond West and the party described under "Customer".

DATE:	11/10/2022
SCALE:	X" = 1'-0"
DRAWN BY:	J. TOSTANOSKI
PROJECT #:	100713607
SHEET NUMBER:	SS1
REV:	1

2

SITE PLAN - FOR REFERENCE

Scale: NTS



FOR REFERENCE ONLY

REV. NO.	DESCRIPTION	REV. DATE	REV. BY
1	INITIAL RELEASE	09/14/2022	JON TOSKI
2	CITY CORRECTIONS MADE	11/10/2022	JON TOSKI

CUSTOMER:
RED DOT CORPORATION
2504 EAST MAIN
PUYALLUP, WA 98372

SHEET NAME:
SITE PLAN

STRUCTURAL STAMP

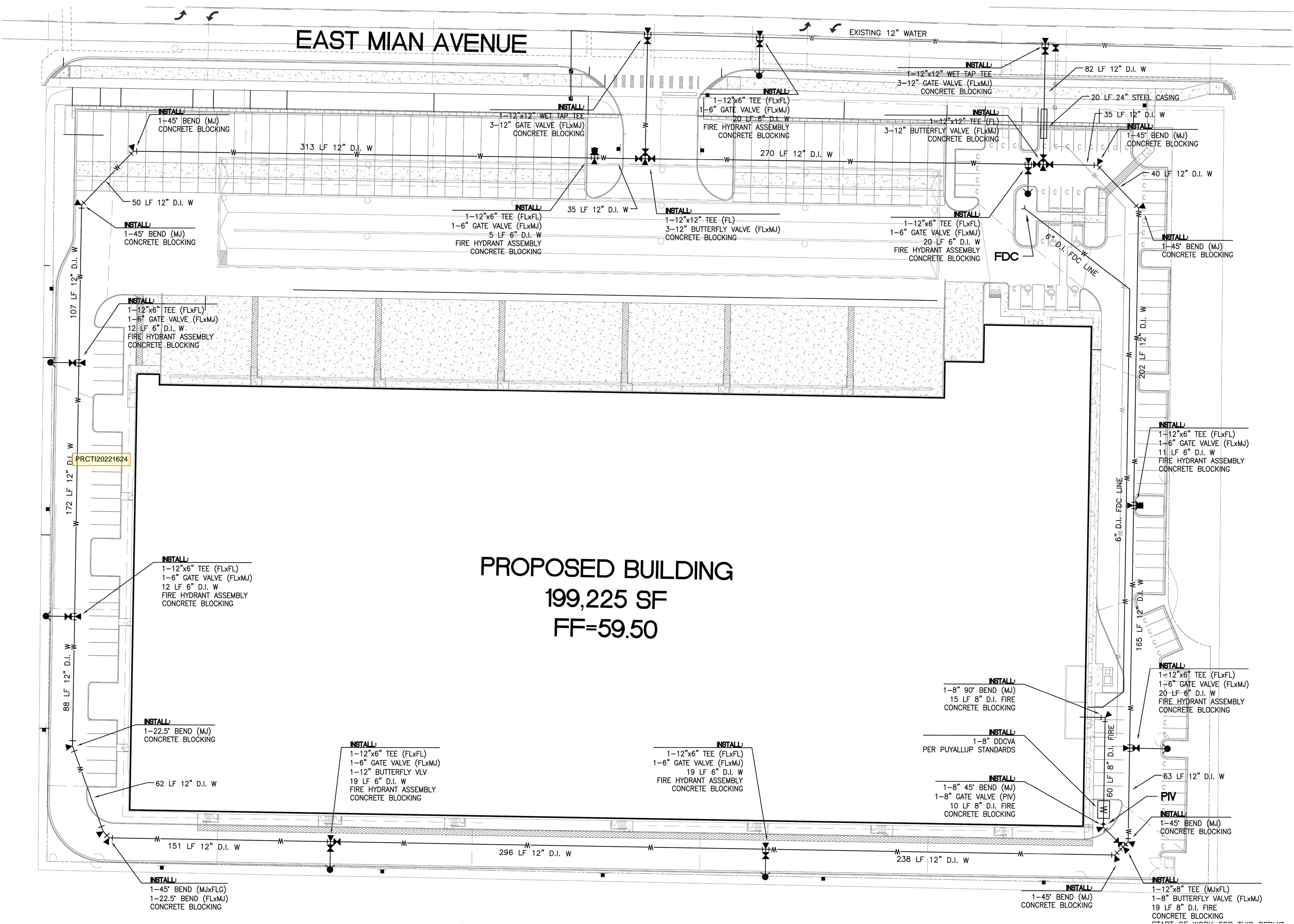
City of Puyallup Development & Permitting Services ISSUED PERMIT	
Building	Planning
Engineering	Public Works
Fire	Traffic

All dimensions are to be field verified by the customer. Raymond West assumes no responsibility for incorrect dimensions, location of lights or other equipment outside of Raymond West's scope of work.
This drawing is the property of Raymond West and is to be used only by the party described in the "Customer" section and may only be reproduced with the permission of Raymond West. Copying in part or as a whole is prohibited. This is subject to a Confidentiality Agreement between Raymond West and the party described under "Customer".

DATE: 11/10/2022
SCALE: NTS
DRAWN BY: J.TOSTANOSKI
PROJECT #: 100713607

SHEET NUMBER: **SS2**
REV: **1**

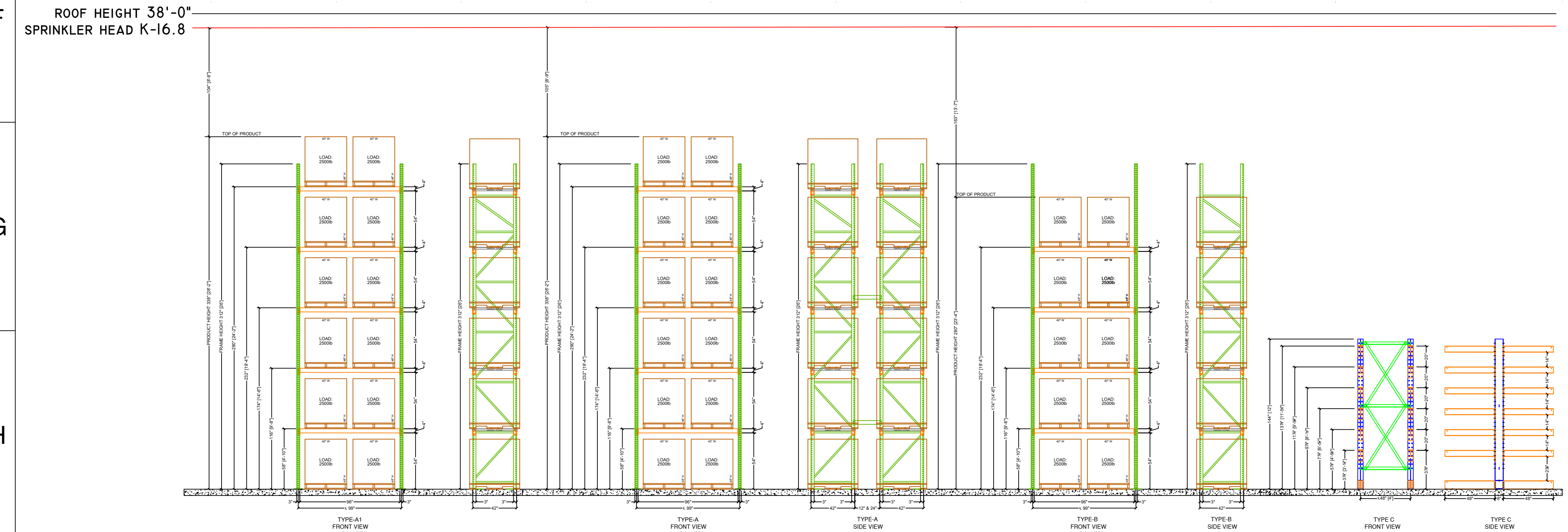
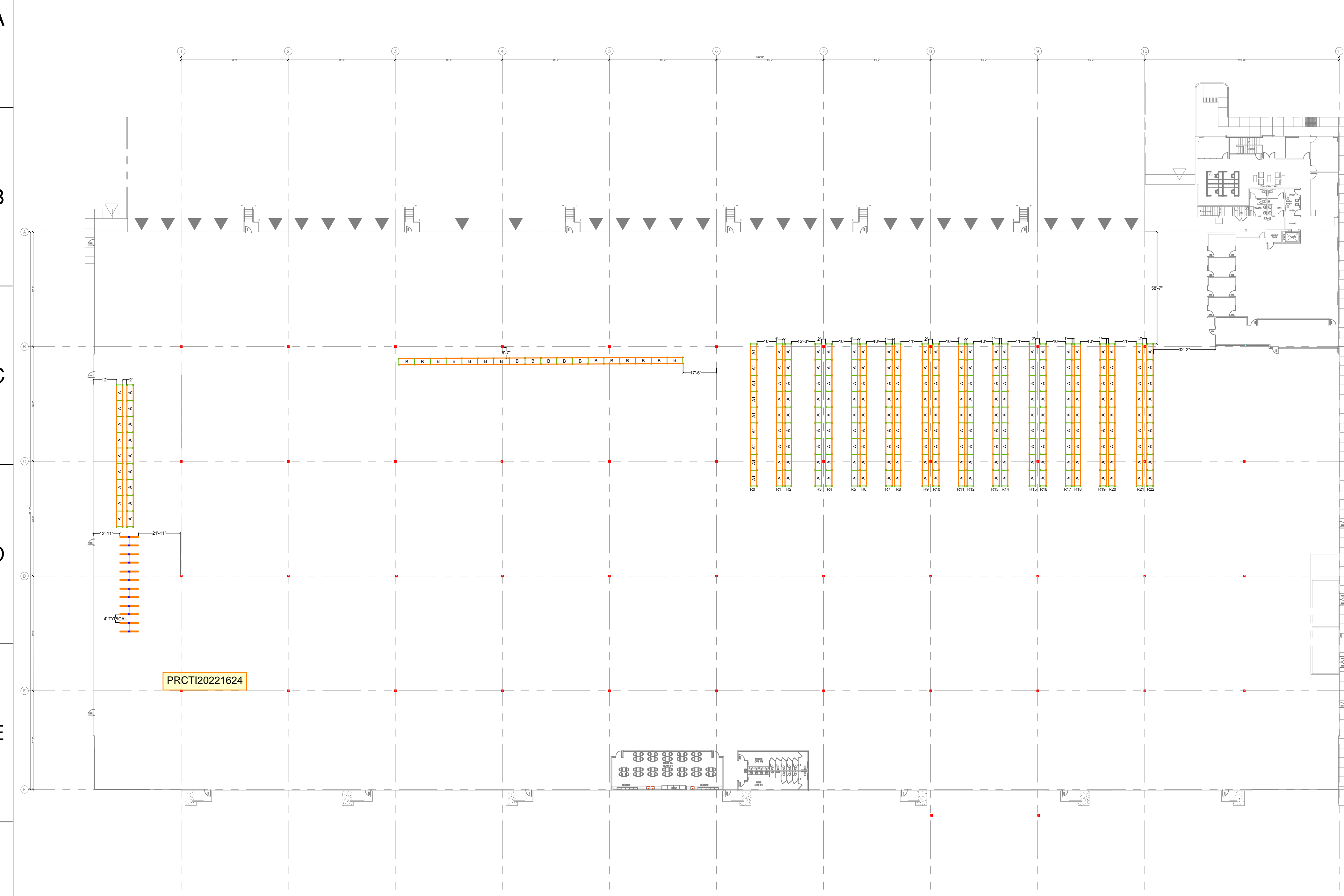
A
B
C
D
E
F
G
H



PROPOSED BUILDING
199,225 SF
FF=59.50

RED_DOT_CORPORATION_100713607_P1.dwg

3 FLOOR PLAN
Scale: 1/32"=1'



HIGH-PILED STORAGE COMMODITY DESCRIPTION FOR RED DOT CORPORATION:

RED DOT CORPORATION IS GOING TO OCCUPY THE BUILDING LOCATED AT 495 ANDOVER PARK E. PRODUCTS TO BE STORED ARE THE FOLLOWING: MOBILE HVAC UNITS AND COMPONENTS. ALL PRODUCTS ARE CLASS I COMMODITIES, PACKAGED IN CORRUGATED CARTONS, EXPANDED AND UNEXPANDED, PLACED ON WOODEN PALLETS. THE COMMODITIES WILL BE PLACED IN THE PROPOSED SELECTIVE RACKING, AND CANTILEVER RACKING ON OPEN WIRE MESH DECKING HAVING UNIFORM OPENINGS NOT MORE THAN 6 INCHES APART, COMPRISING NOT LESS THAN 50 PERCENT OF THE OVERALL SHELF AREA AND WITH APPROVED FLUE SPACES, OR DIRECTLY ON THE LOAD BEAMS. OPEN TOP CONTAINERS AND SOLID SHELVING WILL NOT BE PRESENT. EXPOSED AND CARTONED GROUP A PLASTIC ARE LOCATED THROUGHOUT. CARTONED EXPANDED GROUP A PLASTIC, IN LIMITED AMOUNTS, THE LOCATION WILL BE IDENTIFIED IN THE FINAL REPORT. THE CANTILEVER (TYPE-C) RACK WILL STORE CLASS I COMMODITY.

REQUIRED INFORMATION FOR CITY BUILDING AND FIRE SAFETY PER 2018 IFC AND 2016 NFPA-13

- DIMENSION OF RACKING AREA IS APPROXIMATELY: 21,500 SQ. FT.
- SQUARE FOOTAGE OF THE WAREHOUSE IS APPROXIMATELY 188,000 SQ. FT.
- THE WAREHOUSE CEILING HEIGHT IS 38'. MAXIMUM STORAGE HEIGHT OF COMMODITY WITHIN RACKS WILL NOT EXCEED 30'. TOP OF STORAGE WILL BE MAINTAINED A MINIMUM OF 36" BELOW FIRE SPRINKLER DEFLECTORS.
- THE NUMBER OF TIERS WITHIN RACK ASSEMBLES IS VARIED SEE RACK DETAILS.
- PRODUCTS WILL BE STORED ON WOODEN PALLETS, SLATS (MAINTAINING >50%OPEN) OR ON OPEN WIRE MESH DECKING WITHIN PALLET STORAGE RACKS.
- AISLE DIMENSIONS BETWEEN STORAGE ARRAYS EQUAL OR EXCEED 10' OR 120" (SEE PLAN)
- MAXIMUM PILE VOLUME FOR THE LARGEST ARRAY IS N/A, NO ON FLOOR STORAGE.
- HIGH PILED STORAGE WILL BE PRESENT IN PALLET RACKS
- NO COMMODITIES WITHIN FACILITY ARE BANDED.
- FIRE ACCESS DOORS ARE REQUIRED AND ARE SPACED SUCH THAT AN ACCESS DOOR IS LOCATED WITHIN 125'-0" LINEAL FEET FROM ALL POINTS OF EXTERIOR WALLS THAT ADJOIN FIRE ACCESS ROADWAYS.
- AN ESFR FIRE SPRINKLER SYSTEM PROTECTS THIS OCCUPANCY. THE SYSTEM IS DESIGNED USING RELIABLE K-16.8, 212 DEGREE ESFR PENDENT SPRINKLER. ESFR SPRINKLER DISCHARGE AT 55 PSI. PER THE 2016 EDITION OF NFPA 13, TABLE 17.3.3.1, K-16.8 ESFR SPRINKLERS DISCHARGING AT 55 PSI, BELOW A 40'-0" HIGH ROOF, ARE ADEQUATE TO PROTECT THE STATED STORAGE EXPECT AS NOTED.
- NOTE- AREA OF RACKING STORING CARTONED EXPANDED GROUP A PLASTICS COMMODITIES TO BE ADDRESSED IN THE FINAL REPORT
- SMOKE AND HEAT VENTS ARE NOT REQUIRED PER THE 2018 IFC- TABLE 3206.2

2018 IFC-TABLE 3206.2 -GENERAL FIRE PROTECTION AND LIFE SAFETY REQUIREMENTS

- CLASS COMMODITY - GROUP A PLASTICS
- SIZE OF HIGH-PILED STORAGE AREA- 21,500
- AUTOMATIC FIRE EXTINGUISHING SYSTEM- YES
- FIRE DETECTION SYSTEM- NOT REQUIRED
- BUILDING ACCESS- YES
- SMOKE AND HEAT REMOVAL- YES- J (NOT REQUIRED WHEN STORAGE AREAS WITH AN EXIT ACCESS TRAVEL DISTANCE OF 250 FEET OR LESS ARE PROTECTED BY EARLY SUPPRESSION FAST RESPONSE(ESFR) SPRINKLER SYSTEMS INSTALLED IN ACCORDANCE WITH SECTION 903.3.1.1.
- DRAFT CURTAINS- NOT REQUIRED
- SOLID-PILED STORAGE, SHELF STORAGE AND PALLETIZED STORAGE- YES SEE FINAL REPORT



https://raymondwest.com
SEATTLE, WA
6607 287TH ST.
AUBURN, WA 98001
PHONE: 1.888.820.8811

REV. NO.	DESCRIPTION	REV. DATE	REV. BY
1	INITIAL RELEASE	09/14/2022	JON TOSKI
2	CITY CORRECTIONS MADE	11/10/2022	JON TOSKI

RED DOT CORPORATION
2504 EAST MAIN
PUYALLUP, WA 98372

SHEET NAME:
FLOOR PLAN

STRUCTURAL STAMP

DATE: 11/10/2022
SCALE: 1/32" = 1'-0"
DRAWN BY: J. TOSTANOSKI
PROJECT #: 100713607
SHEET NUMBER: **SS3**
REV: **1**

City of Puyallup
Development & Permitting Services
ISSUED PERMIT

Building	Planning
Engineering	Public Works
Fire	Traffic

4


EGRESS PLAN

Scale: 1/32"=1'

REV. NO.	DESCRIPTION	REV. DATE	REV. BY
1	INITIAL RELEASE	09/14/2022	JON TOSKI
2	CITY CORRECTIONS MADE	11/10/2022	JON TOSKI

CUSTOMER:
RED DOT CORPORATION
2504 EAST MAIN
PUYALLUP, WA 98372

SHEET NAME:
EGRESS PLAN

STRUCTURAL STAMP

EXPIRES
04-12-2024

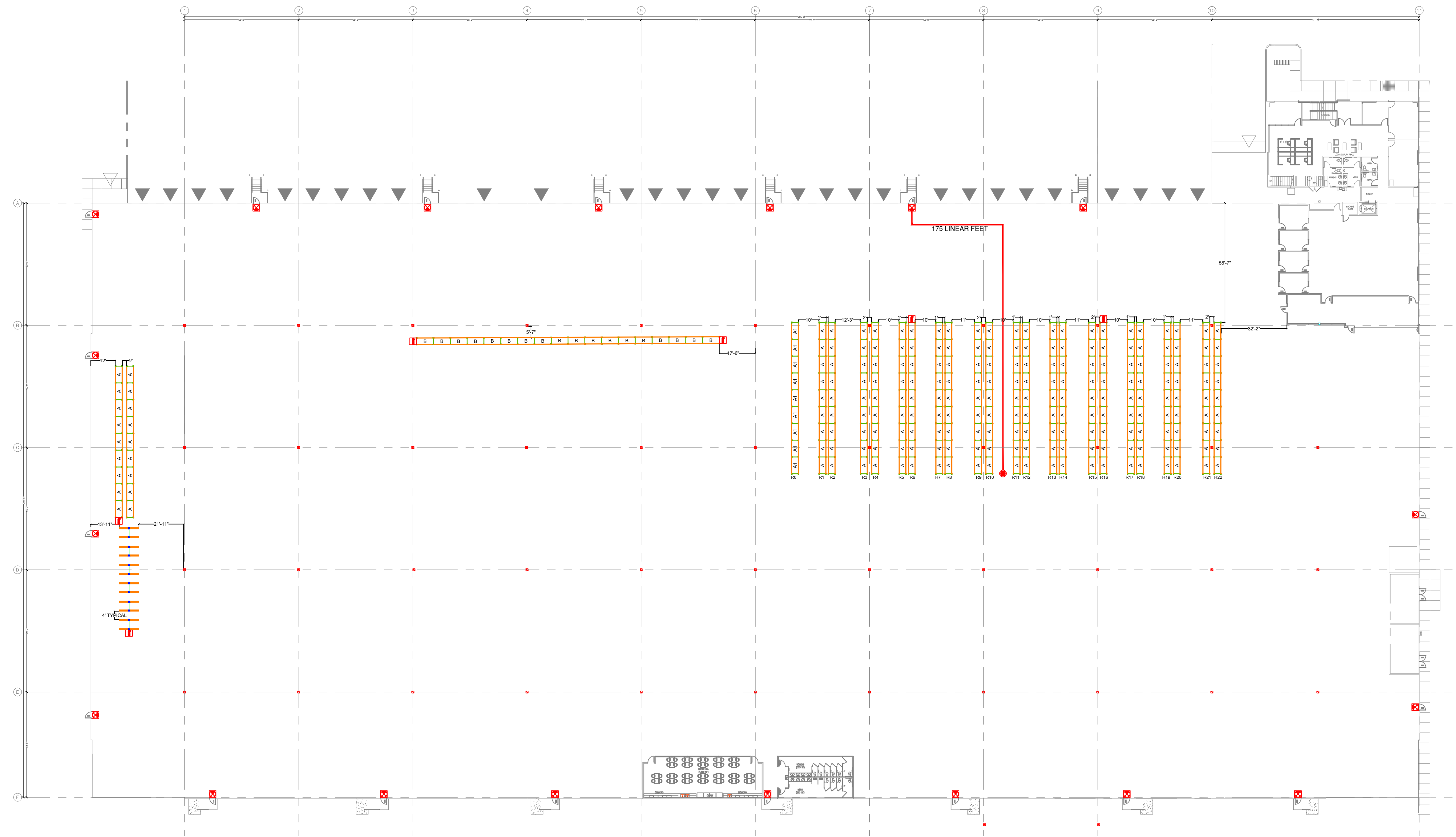
All dimensions are to be field verified by the customer. Raymond West assumes no responsibility for incorrect dimensions, locations of lights or other equipment outside of Raymond West's scope of work.
This drawing is the property of Raymond West and is not to be used, copied, or reproduced in any form without the written consent of Raymond West. Any unauthorized use or reproduction of this drawing without the written consent of Raymond West is prohibited. This is subject to a Confidentiality Agreement between Raymond West and the party described under "Customer".

DATE: 11/10/2022
SCALE: 1/32" = 1'-0"
DRAWN BY: J.TOSTANOSKI
PROJECT #: 100713607

SHEET NUMBER: **SS4**
REV: **1**

City of Puyallup
Development & Permitting Services
ISSUED PERMIT

Building	Planning
Engineering	Public Works
Fire	Traffic



PRCTI20221624

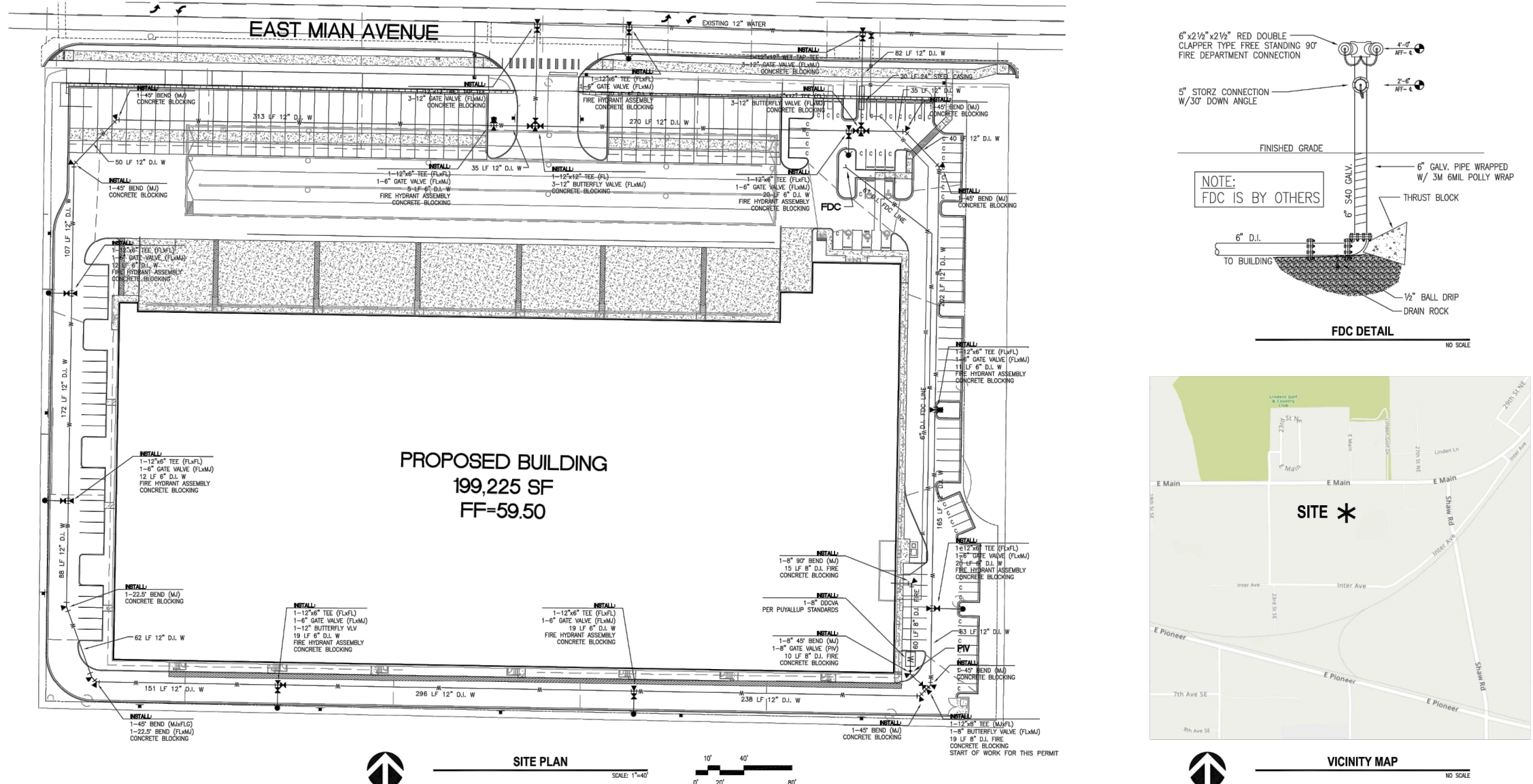
NOTES:

1. THE COMMON PATH OF EGRESS TRAVEL DISTANCE NOT TO EXCEED IBC TABLE 1006.2.1
2. THE EXIT ACCESS TRAVEL DISTANCE, MEASURED FROM THE MOST REMOTE POINT TO AN EXIT, NOT TO EXCEED THE ALLOWABLE PER CBC TABLE 1017.2
3. EXIT SIGNS SHALL BE INTERNALLY OR EXTERNALLY ILLUMINATED IN ACCORDANCE WITH SECTION 1013.3
4. THE MAXIMUM OUT OF PLUMBNESS SHALL BE 0.5 INCHES PER 10 FT. OF HEIGHT.
5. EGRESS AND PORTABLE FIRE EXTINGUISHER REQUIREMENTS TO BE ADDRESSED IN FINAL FPE REPORT

LEGEND

	Exit Sign
	Fire Extinguisher
	Point of Origin
	Egress Path

- UNDERGROUND PIPE NOTES**
- THIS SHEET PLAN IS FOR REFERENCE ONLY.
 - SEE MECHANICAL AND CIVIL DRAWINGS FOR ADDITIONAL SITE PLAN INFORMATION.
 - ALL UNDERGROUND PIPING IS TO BE INSTALLED BY A CONTRACTOR HAVING A VALID WASHINGTON STATE STATE LICENSE.
 - ALL UNDERGROUND PIPE TO BE INSTALLED HORIZONTAL AND/OR VERTICAL.
 - RECORDING: 400 GPM @ 20' = 2400 GPM
 - RECORDING: 100 GPM @ 10' = 1000 GPM
 - RECORDING: 100 GPM @ 12' = 1200 GPM
 - PARTICULAR START POINT AT FLANGES A.F.F. NODE BUILDING.
- INSTALLATION NOTE**
- ALL WORK ON THE UNDERGROUND PORTIONS OF FIRE PROTECTION SPRINKLER SYSTEM SHALL BE INSTALLED AND COVERED BY A LICENSED CONTRACTOR WHO HAS A STATE LEVEL 1 FIRE PROTECTION SPRINKLER SYSTEM CONTRACTOR'S LICENSE UNDER WAC 212-02-020.
- GENERAL NOTES**
- FOR WORKING CLEARANCE, AN UNBROKEN 3'-0" FOOT MINIMUM SHALL BE MAINTAINED AROUND THE PIPE AND FDC.
- FLOW TEST**
- | | |
|----------|-----------|
| STATIC | 55 PSI |
| RESIDUAL | 45 PSI |
| FLOW | 1.125 GPM |
| LOCATION | EAST MAIN |



HANGER LEGEND

HANGER TYPE	DESCRIPTION
1	SPRINKLER BRANCHLINE HANGER
2	SPRINKLER MAN HANGER
3	SPRINKLER HANGER
4	SPRINKLER BRANCHLINE HANGER TO WALL
5	SPRINKLER MAN HANGER TO WALL
6	SPRINKLER HANGER TO WALL

- GENERAL NOTES:**
- 16.6% ESFR SPRINKLERS SHALL BE INSTALLED PER NFPA 13 SECTION 9.1.2.1.1.5.1. ESFR SPRINKLERS SHALL BE INSTALLED SO THE DEFLECTORS ARE NOT MORE THAN 1'4\" AND NOT LESS THAN 6\" BELOW THE CEILING PER NFPA 13 SECTION 8.12.4.1.2.1.
 - LATERAL BRACING IS NOT REQUIRED ON 2 1/2\" & 3\" BRANCH LINES WHEN INSTALLED PER NFPA 13 SECTION 9.1.2.1.1.5.1.10. ALL 2 1/2\" AND 3\" BRANCH LINES ARE TO BE INSTALLED PER SECTION 8.12.4.1.2.1.1. LATERAL SMOKE BRACING IS NOT REQUIRED. HANGER HEADS TO BE LEFTS THAN 6\" WHEN MEASURED BETWEEN TOP OF PIPE AND POINT OF ATTACHMENT TO BUILDING STRUCTURE.
 - HANGERS WITH HIGH VELOCITY (LOW SPEED) FANS SHALL BE CENTERED BETWEEN A ESFR SPRINKLER AND LOCATED SO THAT THE TOP OF THE FAN BLADES ARE LOCATED A MINIMUM OF 6\" BELOW THE SPRINKLER DEFLECTORS. HANGERS SHALL BE WELDED TO CEILING DOWN UPON ACTIVATION OF SPRINKLER SYSTEM W/OUT FLOW SWITCHES.
- DESIGN CRITERIA:**
- ACTUAL STORAGE HEIGHTS VARY - 30\" MUST BE MAINTAINED BETWEEN TOP OF STORAGE AND ESFR SPRINKLER DEFLECTORS.
- STORAGE AREAS - ROOF HEIGHTS 40 FT & LESS
SECTION STANDARD IS NFPA 13 SECTION 8.12.4.1.2.1.1 ESFR PENDENT SPRINKLER HEAD WITH A MINIMUM FLOOR PRESSURE OF 20 PSI WITH A MINIMUM 4\" HIGH ROOF. THIS DESIGN ALLOWS FOR STORAGE OF THE FOLLOWING COMMODITIES:
PALETTIZED AND SOLID PILED STORAGE PER TABLES 14.4.1 & 15.4.1 (NO OPEN TOP CONDITIONS)
A. GLASS I-HY ENCAPSULATED COMMODITIES
MAXIMUM STORAGE HEIGHT = 35'-0\"
B. CARTONED NONPILDED PLASTICS
MAXIMUM STORAGE HEIGHT = 35'-0\"
C. EXPLOD NONPILDED PLASTICS
MAXIMUM STORAGE HEIGHT = 35'-0\"
 - RAIL STORAGE PER TABLES 16.3.3.1 & 17.3.3.1 (NO OPEN TOP CONDITIONS)
A. GLASS I-HY ENCAPSULATED OR NONENCAPULATED COMMODITIES
MAXIMUM STORAGE HEIGHT = 35'-0\"
B. CARTONED NONPILDED PLASTICS
MAXIMUM STORAGE HEIGHT = 35'-0\"
C. EXPLOD NONPILDED PLASTICS
MAXIMUM STORAGE HEIGHT = 35'-0\"
 - PILE RAIL STORAGE PER TABLES 12.12.2.2.1 & 12.12.2.2.3
A. WOOD OR PLASTIC PALLETS STORED ON FLOOR OR RACKING WITHOUT OPEN SHELVING
MAXIMUM STORAGE HEIGHT = 35'-0\"
 - ESFR RISER & ELEC. ROOMS:
CORRIDOR HAZARD OCCUPANCY
 - OFFICE SPACES:
LIGHT HAZARD OCCUPANCY

SEISMIC BRACING LEGEND

BRACE NUMBER	SIZE OF BRACE	TYPE OF BRACE	ATTACHMENT	ATTACHMENT	MINIMUM BRACE SPACING	MINIMUM BRACE HEIGHT
SB-1	1\" SCH40	1\" SCH40	3\"-6\" FG 1001	8\"-12\" W/4\"x4\"	42\"	20'-0\"
SB-2	1\" SCH40	1\" SCH40	3\"-6\" FG 1001	8\"-12\" W/4\"x4\"	42\"	20'-0\"
SB-3	1\" SCH40	1\" SCH40	3\"-6\" FG 1001	8\"-12\" W/4\"x4\"	42\"	20'-0\"
SB-4	1\" SCH40	1\" SCH40	3\"-6\" FG 1001	8\"-12\" W/4\"x4\"	42\"	20'-0\"
SB-5	1\" SCH40	1\" SCH40	3\"-6\" FG 1001	8\"-12\" W/4\"x4\"	42\"	20'-0\"
SB-6	1\" SCH40	1\" SCH40	3\"-6\" FG 1001	8\"-12\" W/4\"x4\"	42\"	20'-0\"
SB-7	1\" SCH40	1\" SCH40	3\"-6\" FG 1001	8\"-12\" W/4\"x4\"	42\"	20'-0\"
SB-8	1\" SCH40	1\" SCH40	3\"-6\" FG 1001	8\"-12\" W/4\"x4\"	42\"	20'-0\"
SB-9	1\" SCH40	1\" SCH40	3\"-6\" FG 1001	8\"-12\" W/4\"x4\"	42\"	20'-0\"
SB-10	1\" SCH40	1\" SCH40	3\"-6\" FG 1001	8\"-12\" W/4\"x4\"	42\"	20'-0\"
SB-11	1\" SCH40	1\" SCH40	3\"-6\" FG 1001	8\"-12\" W/4\"x4\"	42\"	20'-0\"
SB-12	1\" SCH40	1\" SCH40	3\"-6\" FG 1001	8\"-12\" W/4\"x4\"	42\"	20'-0\"
SB-13	1\" SCH40	1\" SCH40	3\"-6\" FG 1001	8\"-12\" W/4\"x4\"	42\"	20'-0\"
SB-14	1\" SCH40	1\" SCH40	3\"-6\" FG 1001	8\"-12\" W/4\"x4\"	42\"	20'-0\"
SB-15	1\" SCH40	1\" SCH40	3\"-6\" FG 1001	8\"-12\" W/4\"x4\"	42\"	20'-0\"
SB-16	1\" SCH40	1\" SCH40	3\"-6\" FG 1001	8\"-12\" W/4\"x4\"	42\"	20'-0\"
SB-17	1\" SCH40	1\" SCH40	3\"-6\" FG 1001	8\"-12\" W/4\"x4\"	42\"	20'-0\"

NOTE: THIS IS AN EARLY SUPPRESSION FAST RESPONSE SPRINKLER SYSTEM BRANCH LINE & SPRINKLER HEAD LOCATIONS ARE CRITICAL. ESFR SYSTEMS REQUIRE SPECIAL CONCENTRATION REGARDING PLACEMENT OF LIGHTING, DUCT WORK, PROCESS PIPING, ELECTRICAL CONDUIT RACE, ETC. SPRINKLER PIPING CAN NOT BE ROUTED AROUND OBSTRUCTIONS DUE TO INCREASED FRICTION LOSSES OR CIRCUMVENT FROM ROOF STRUCTURE DUE TO CODE REQUIREMENTS. IF IT IS DETERMINED THAT REQUIRED COORDINATION WITH THE ROOF STRUCTURE, JOIST FRAMING, JOIST BRACING, DUCT WORK, LIGHTING, ELECTRICAL CONDUIT AND OTHER PIPING WILL BE ACCOMMODATED TO PROVIDE THE CLEARANCE REQUIRED FOR AN ESFR SYSTEM.

KEY PLAN

SYSTEM #1 SHEET FP-3
SYSTEM #2 SHEET FP-4
SYSTEM #3 SHEET FP-5
SYSTEM #4 SHEET FP-6
SYSTEM #5 SHEET FP-7
PUMP & RISER LOCATED HERE SHEET FP-8

AS-BUILT

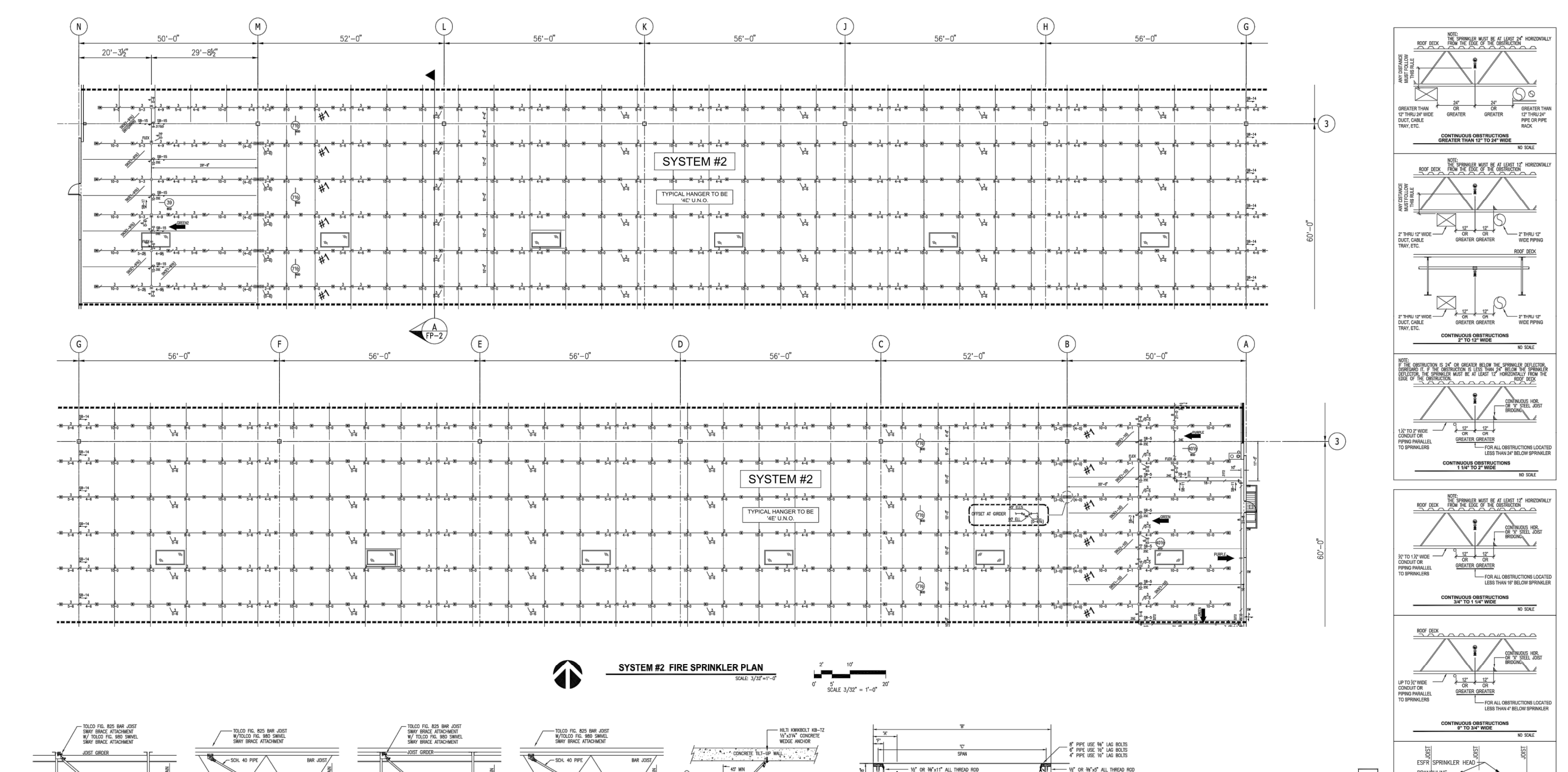
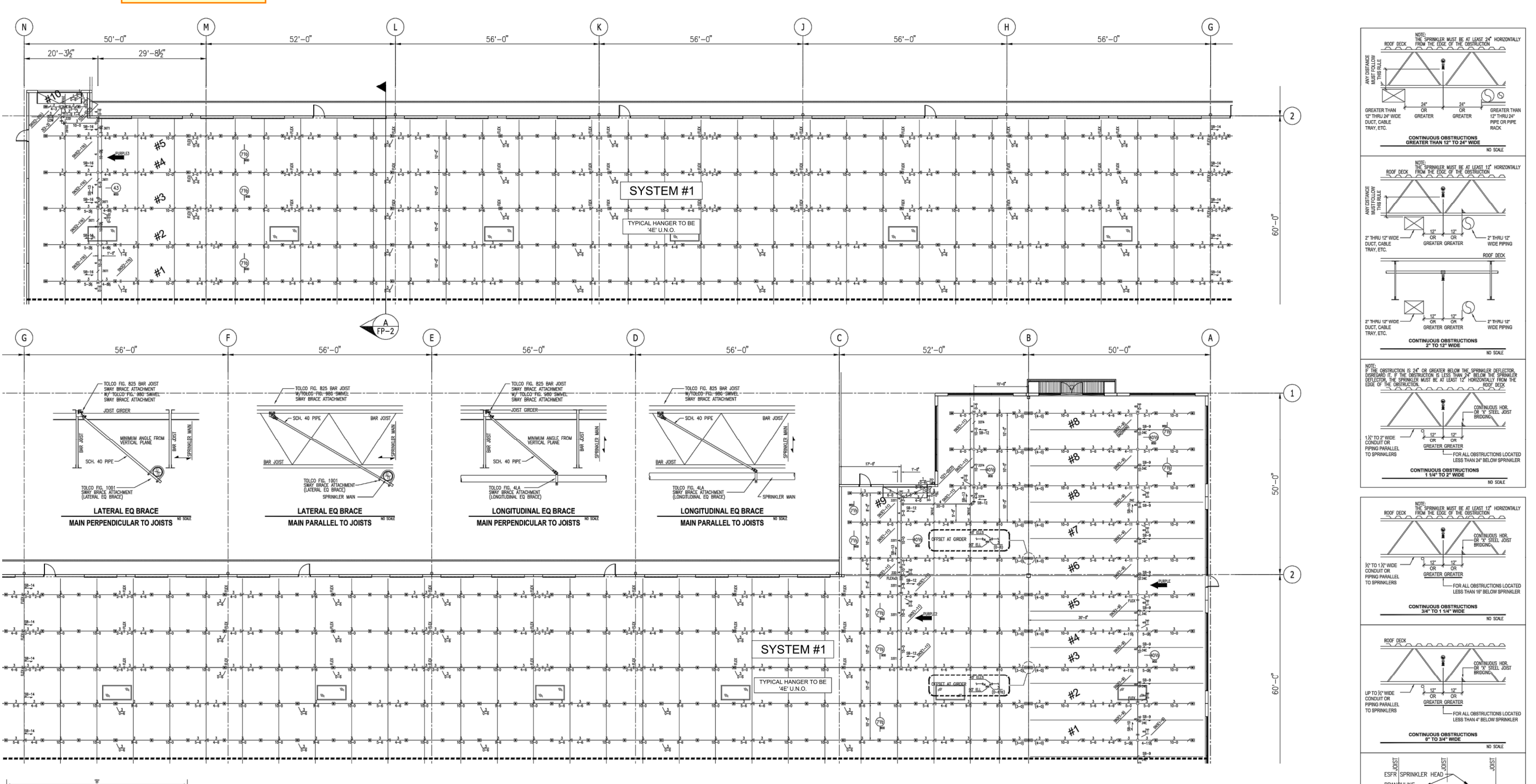
FOR CONSTRUCTION SHALL BE A 1 1/2\" RISE PER 100' FALL

SEE NOTES SHEET

1. UNDEVELOPED BRANCH LINE TO BE BLACK PIPE
2. THREADED PIPING TO BE SCH 40 BLACK PIPE

REVISIONS

REV. NO.	DESCRIPTION	DATE	BY
1	INITIAL RELEASE	09/14/2022	JON TOSKI
2	CITY CORRECTIONS MADE	11/10/2022	JON TOSKI



SYSTEM #1 FIRE SPRINKLER PLAN

SCALE: 1/4\" = 1'-0\"

KEY PLAN

SYSTEM #1 SHEET FP-3
SYSTEM #2 SHEET FP-4
SYSTEM #3 SHEET FP-5
SYSTEM #4 SHEET FP-6
SYSTEM #5 SHEET FP-7
PUMP & RISER LOCATED HERE SHEET FP-8

AS-BUILT

FOR CONSTRUCTION SHALL BE A 1 1/2\" RISE PER 100' FALL

SEE NOTES SHEET FP-2

1. UNDEVELOPED BRANCH LINE TO BE BLACK PIPE
2. THREADED PIPING TO BE SCH 40 BLACK PIPE

REVISIONS

REV. NO.	DESCRIPTION	DATE	BY
1	INITIAL RELEASE	09/14/2022	JON TOSKI
2	CITY CORRECTIONS MADE	11/10/2022	JON TOSKI

ESFR OBSTRUCTION CRITERIA

NOTE: THIS IS AN EARLY SUPPRESSION FAST RESPONSE SPRINKLER SYSTEM BRANCH LINE & SPRINKLER HEAD LOCATIONS ARE CRITICAL. ESFR SYSTEMS REQUIRE SPECIAL CONCENTRATION REGARDING PLACEMENT OF LIGHTING, DUCT WORK, PROCESS PIPING, ELECTRICAL CONDUIT RACE, ETC. SPRINKLER PIPING CAN NOT BE ROUTED AROUND OBSTRUCTIONS DUE TO INCREASED FRICTION LOSSES OR CIRCUMVENT FROM ROOF STRUCTURE DUE TO CODE REQUIREMENTS. IF IT IS DETERMINED THAT REQUIRED COORDINATION WITH THE ROOF STRUCTURE, JOIST FRAMING, JOIST BRACING, DUCT WORK, LIGHTING, ELECTRICAL CONDUIT AND OTHER PIPING WILL BE ACCOMMODATED TO PROVIDE THE CLEARANCE REQUIRED FOR AN ESFR SYSTEM.

SYSTEM #2 FIRE SPRINKLER PLAN

SCALE: 1/4\" = 1'-0\"

KEY PLAN

SYSTEM #1 SHEET FP-3
SYSTEM #2 SHEET FP-4
SYSTEM #3 SHEET FP-5
SYSTEM #4 SHEET FP-6
SYSTEM #5 SHEET FP-7
PUMP & RISER LOCATED HERE SHEET FP-8

AS-BUILT

FOR CONSTRUCTION SHALL BE A 1 1/2\" RISE PER 100' FALL

SEE NOTES SHEET FP-2

1. UNDEVELOPED BRANCH LINE TO BE BLACK PIPE
2. THREADED PIPING TO BE SCH 40 BLACK PIPE

REVISIONS

REV. NO.	DESCRIPTION	DATE	BY
1	INITIAL RELEASE	09/14/2022	JON TOSKI
2	CITY CORRECTIONS MADE	11/10/2022	JON TOSKI

ESFR OBSTRUCTION CRITERIA

NOTE: THIS IS AN EARLY SUPPRESSION FAST RESPONSE SPRINKLER SYSTEM BRANCH LINE & SPRINKLER HEAD LOCATIONS ARE CRITICAL. ESFR SYSTEMS REQUIRE SPECIAL CONCENTRATION REGARDING PLACEMENT OF LIGHTING, DUCT WORK, PROCESS PIPING, ELECTRICAL CONDUIT RACE, ETC. SPRINKLER PIPING CAN NOT BE ROUTED AROUND OBSTRUCTIONS DUE TO INCREASED FRICTION LOSSES OR CIRCUMVENT FROM ROOF STRUCTURE DUE TO CODE REQUIREMENTS. IF IT IS DETERMINED THAT REQUIRED COORDINATION WITH THE ROOF STRUCTURE, JOIST FRAMING, JOIST BRACING, DUCT WORK, LIGHTING, ELECTRICAL CONDUIT AND OTHER PIPING WILL BE ACCOMMODATED TO PROVIDE THE CLEARANCE REQUIRED FOR AN ESFR SYSTEM.

REVISIONS

REV. NO.	DESCRIPTION	DATE	BY
1	INITIAL RELEASE	09/14/2022	JON TOSKI
2	CITY CORRECTIONS MADE	11/10/2022	JON TOSKI

CUSTOMER:

RED DOT CORPORATION

2504 EAST MAIN
PUYALLUP, WA 98372

SHEET NAME:

SPRINKLER PLANS 1

STRUCTURAL STAMP

City of Puyallup Development & Permitting Services ISSUED PERMIT

Building	Planning
Engineering	Public Works
Fire	Traffic

DATE: 11/10/2022

SCALE: NTS

DRAWN BY: J.TOSTANOSKI

PROJECT #: 100713607

SHEET NUMBER: SS5

REV: 1

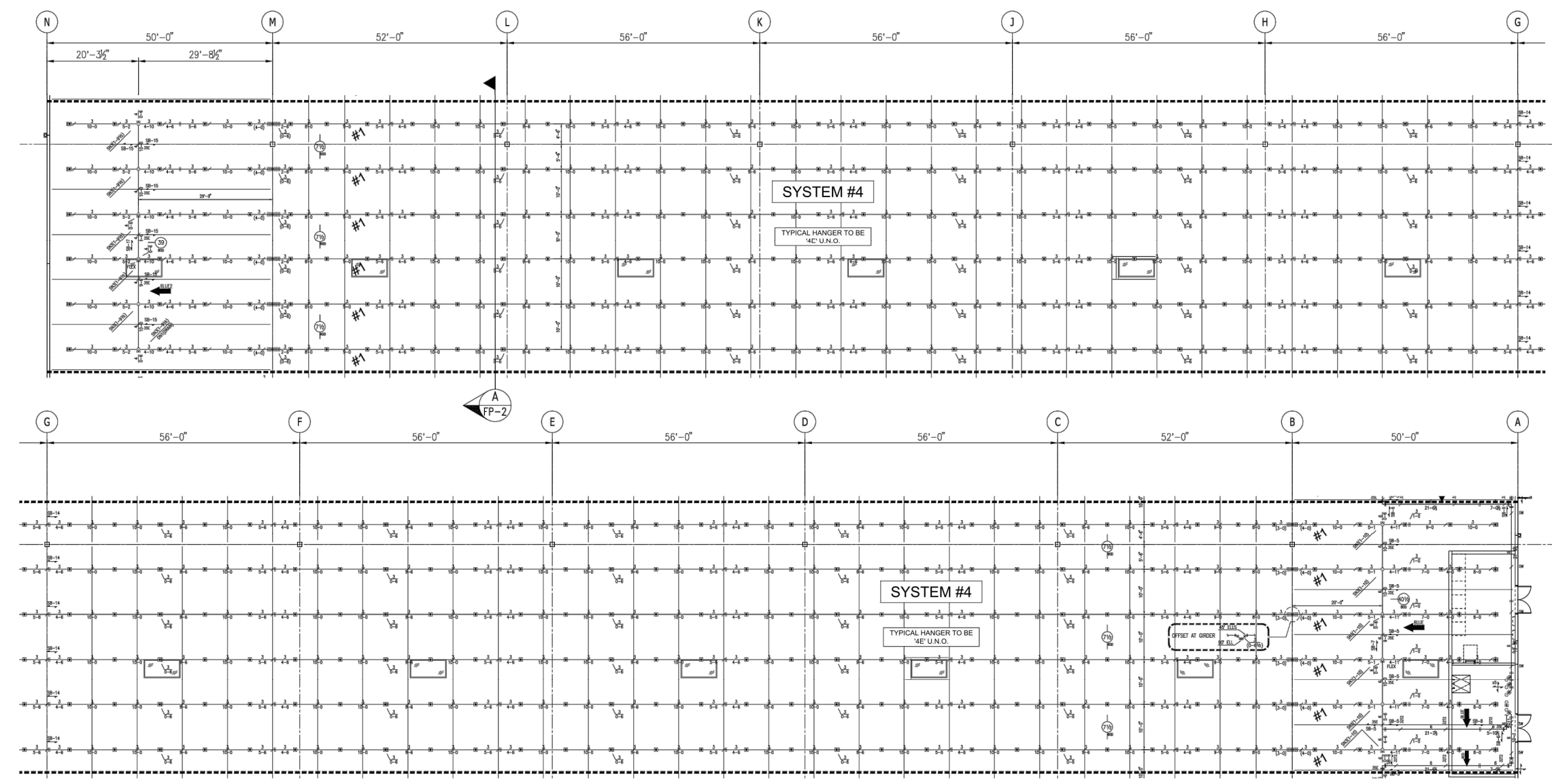
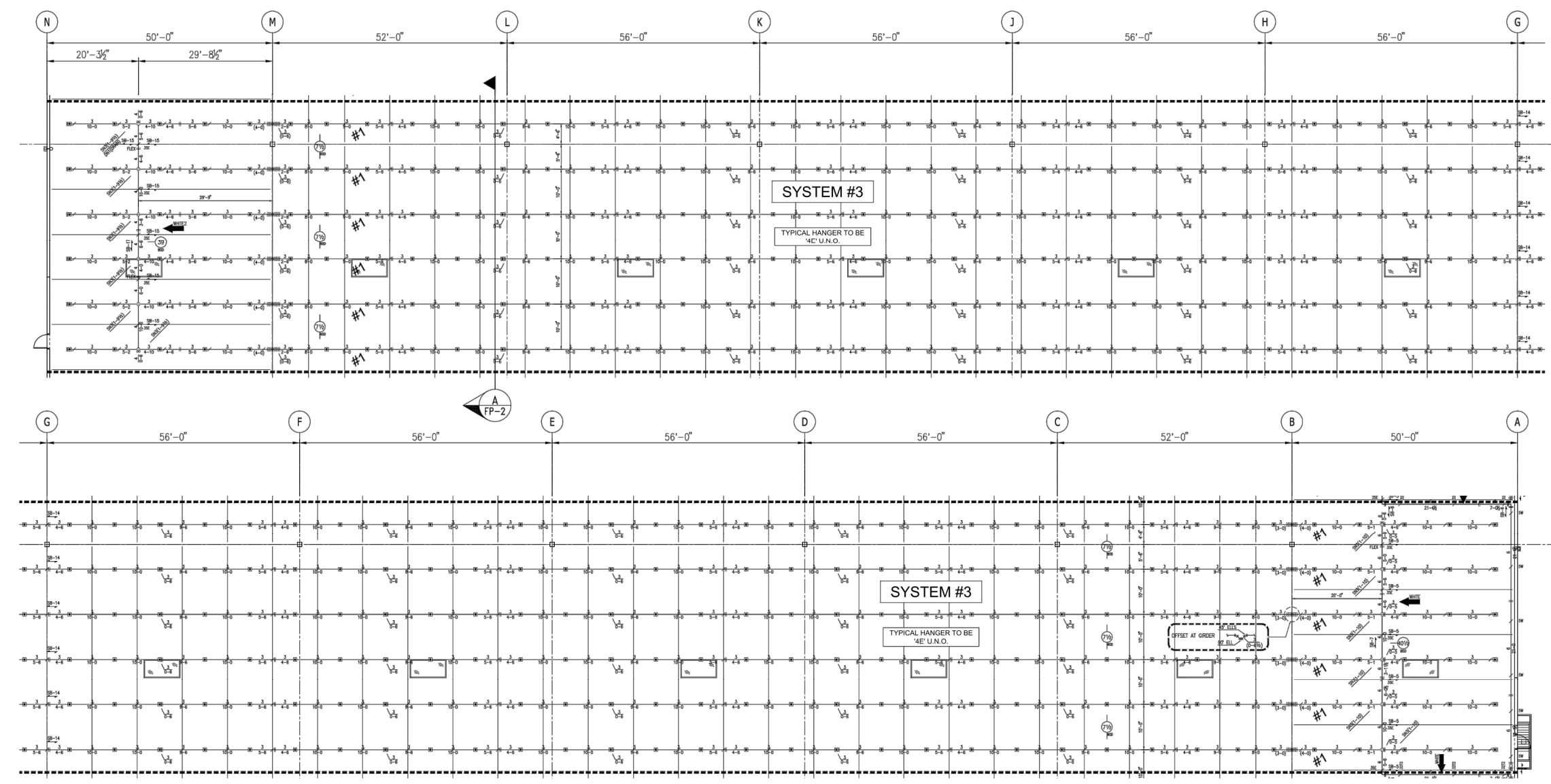
REVISIONS table with columns for REV. NO., DESCRIPTION, REV. DATE, and REV. BY.

CUSTOMER: RED DOT CORPORATION 2504 EAST MAIN PUYALLUP, WA 98372

SHEET NAME: SPRINKLER PLANS 2

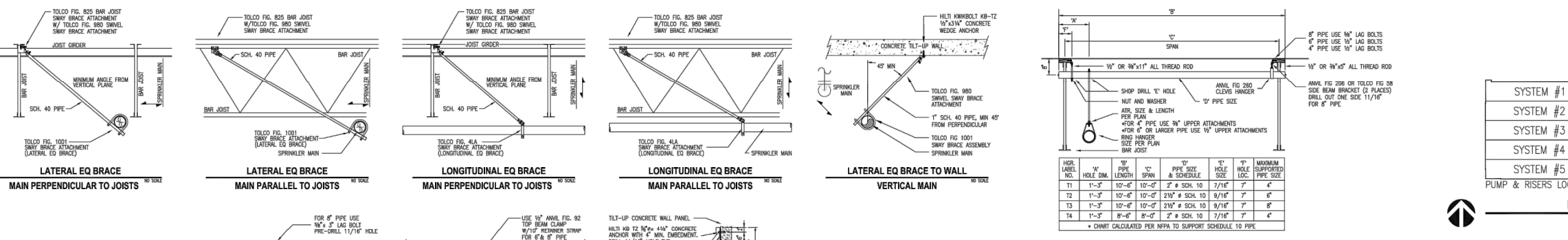
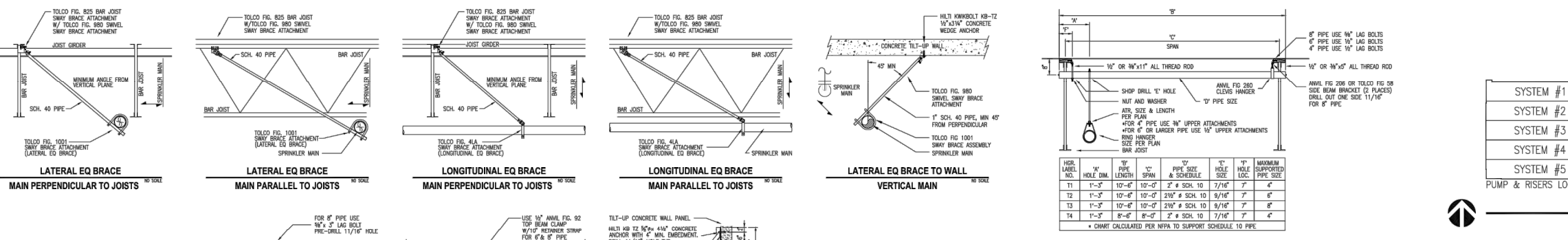
STRUCTURAL STAMP area with City of Puyallup Development & Permitting Services ISSUED PERMIT logo and various service checkboxes.

DATE: 11/10/2022 SCALE: NTS DRAWN BY: J.TOSTANOSKI PROJECT #: 100713607 SHEET NUMBER: SS6 REV: 1



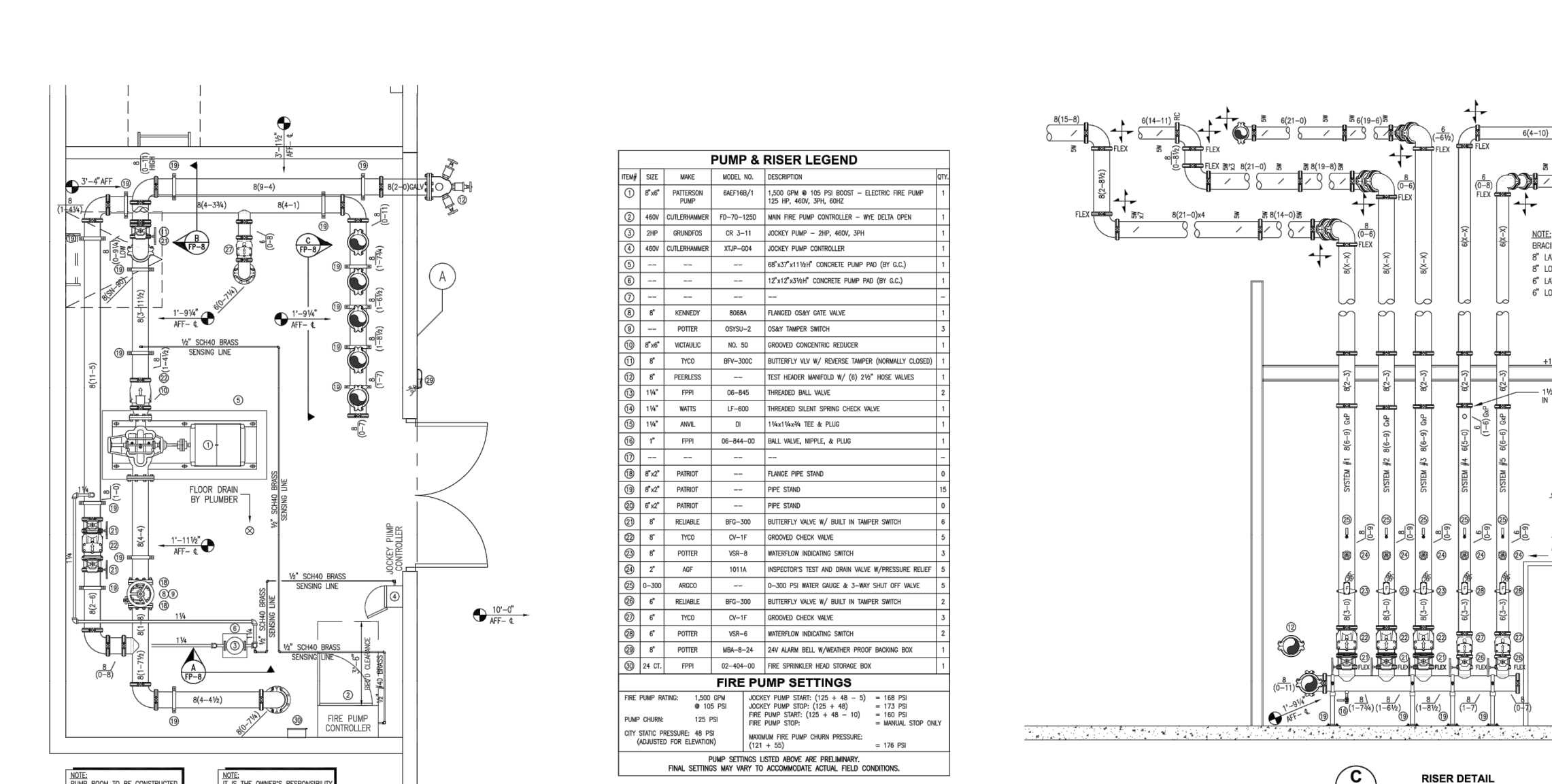
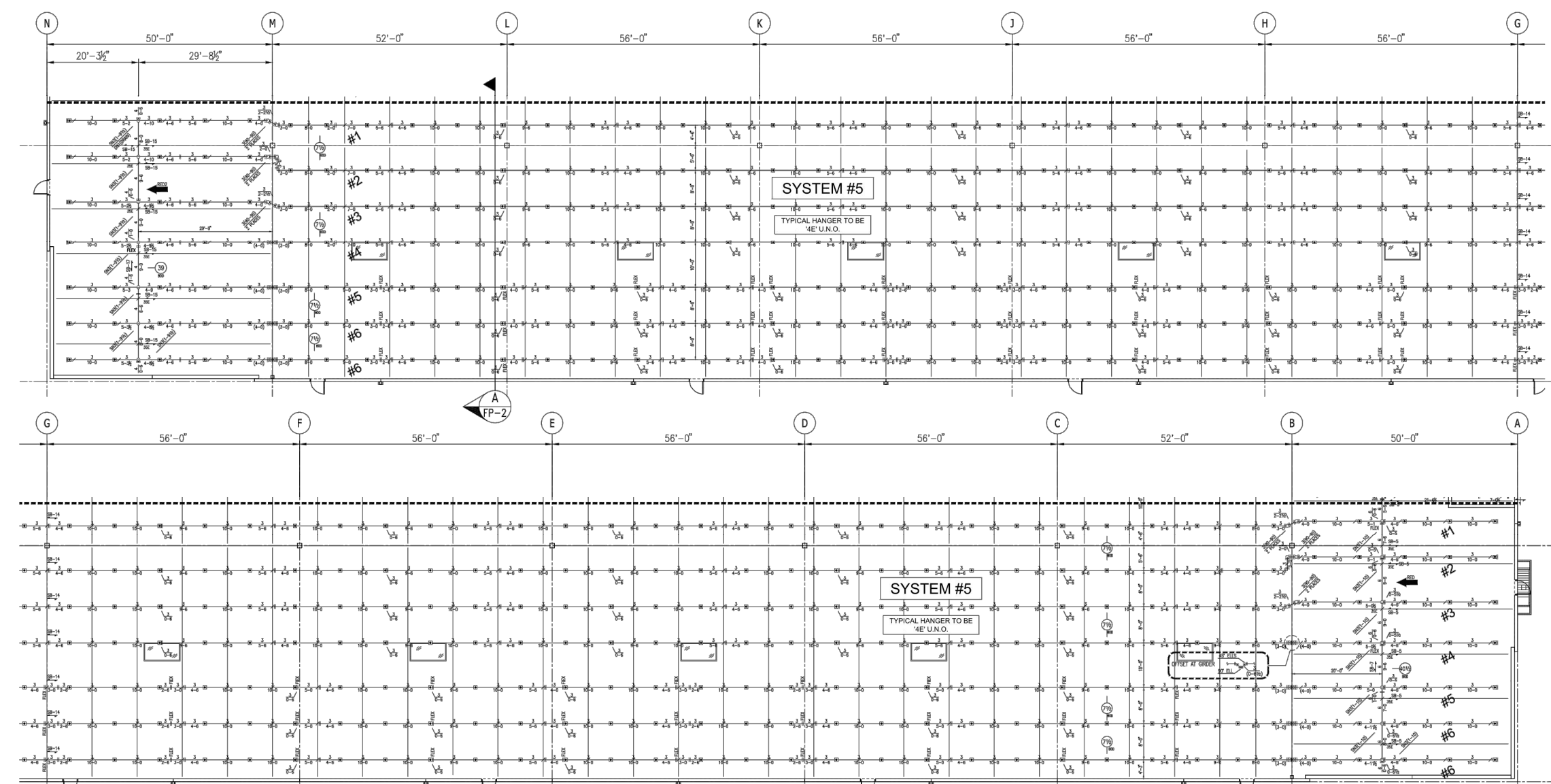
SYSTEM #3 FIRE SPRINKLER PLAN

SYSTEM #4 FIRE SPRINKLER PLAN

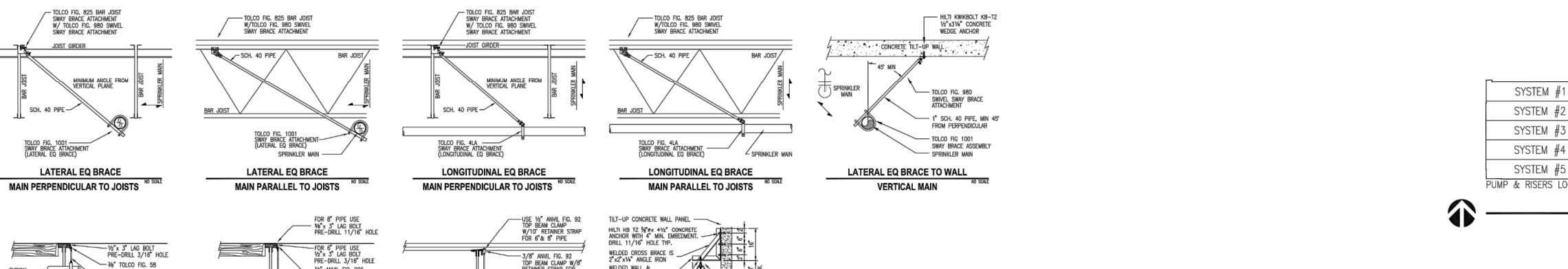


AS-BUILT table for System #3 with columns for STATE CERTIFICATION, FITTING LEGEND, HANGER LEGEND, and GENERAL NOTES.

AS-BUILT table for System #4 with columns for STATE CERTIFICATION, FITTING LEGEND, HANGER LEGEND, and GENERAL NOTES.



SYSTEM #5 FIRE SPRINKLER PLAN

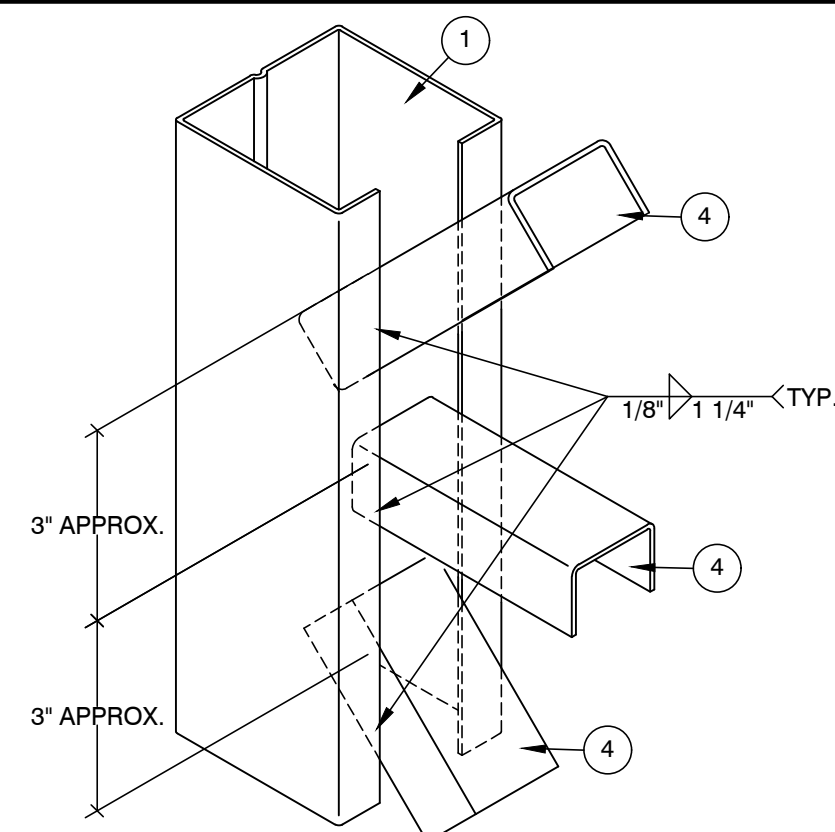


AS-BUILT table for System #5 with columns for STATE CERTIFICATION, FITTING LEGEND, HANGER LEGEND, and GENERAL NOTES.

FIRE PUMP LAYOUT

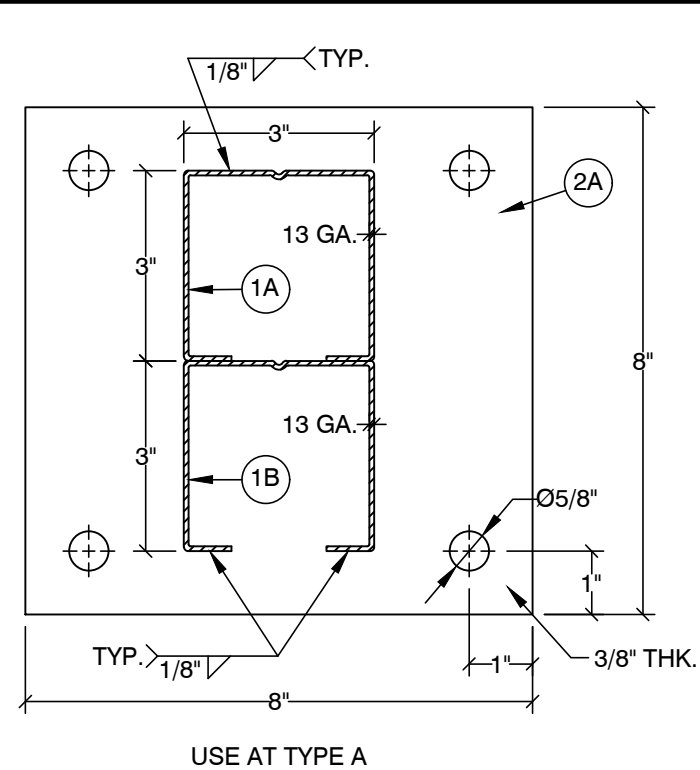


AS-BUILT table for Pump & Riser Legend with columns for STATE CERTIFICATION, FITTING LEGEND, HANGER LEGEND, and GENERAL NOTES.



2A BASE PLATE

V-A TYPICAL BRACE TO COLUMN CONNECTION

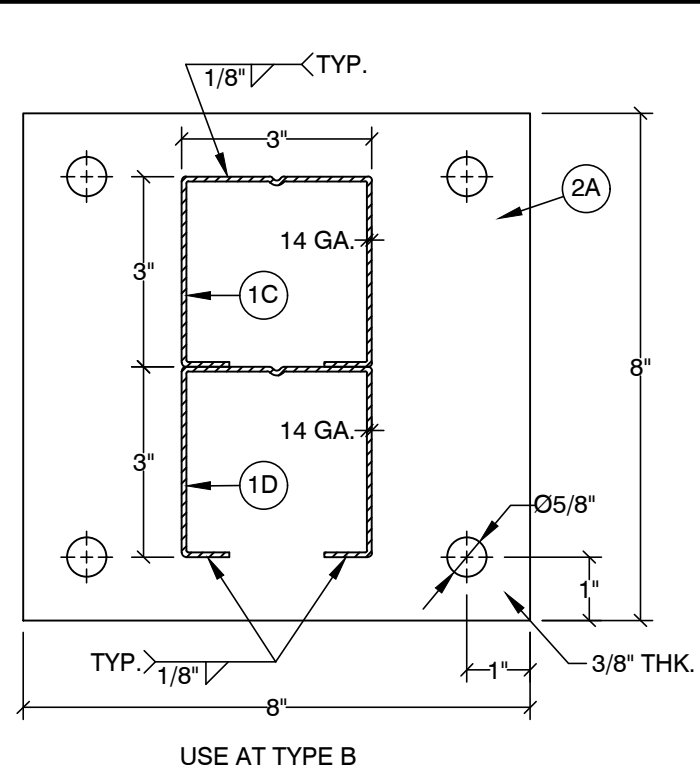


1A COLUMN
1B BACKER

2A BASE PLATE

1C COLUMN

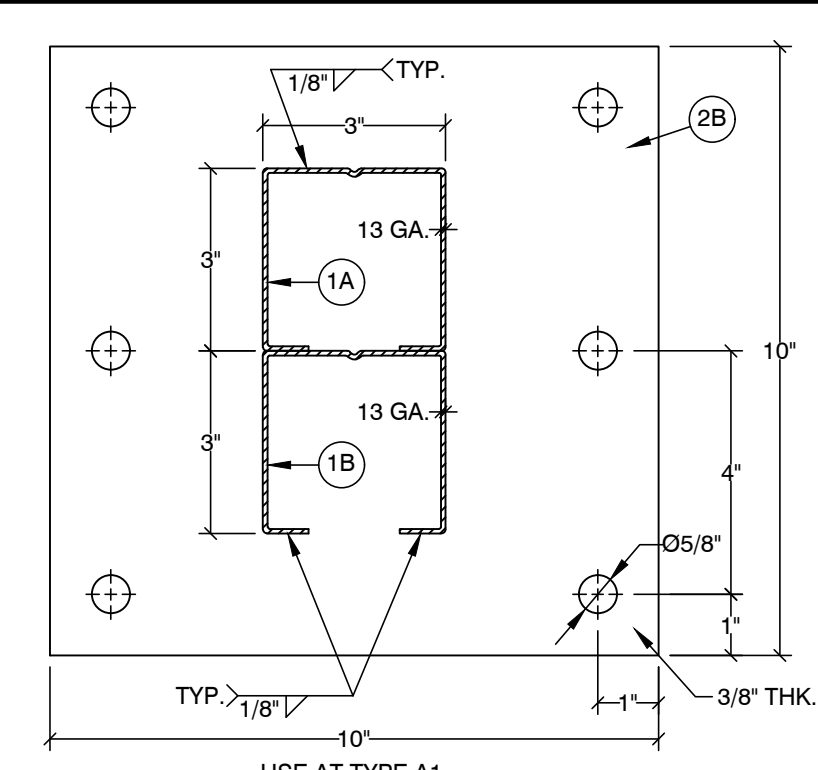
1D BACKER



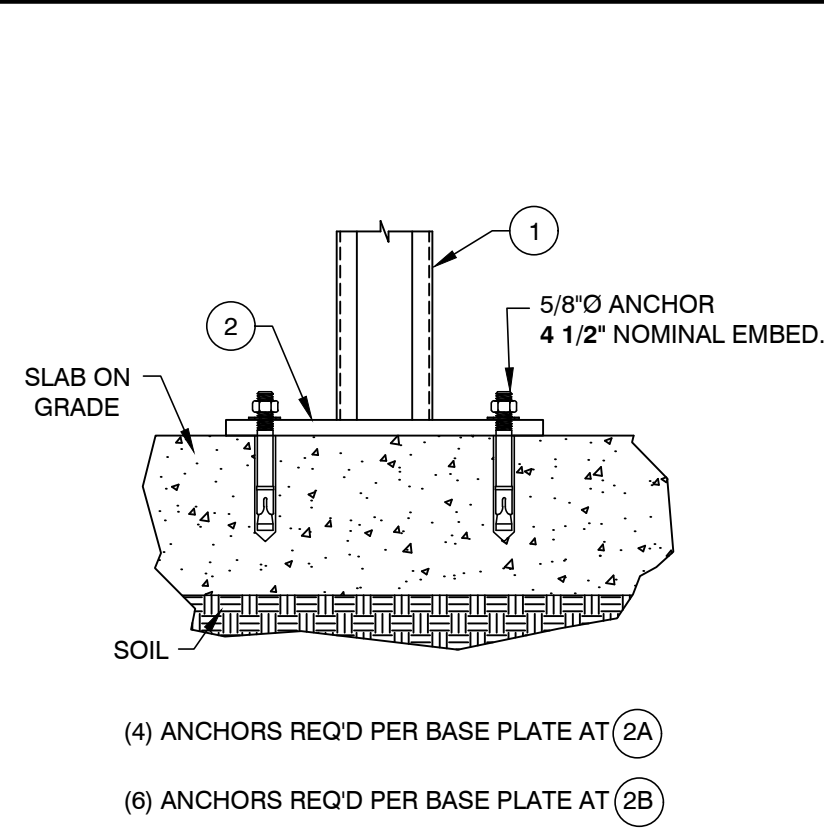
2B BASE PLATE

1A COLUMN

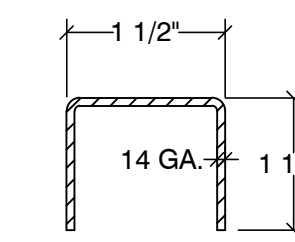
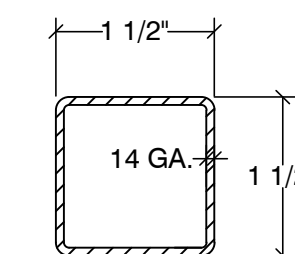
1B BACKER



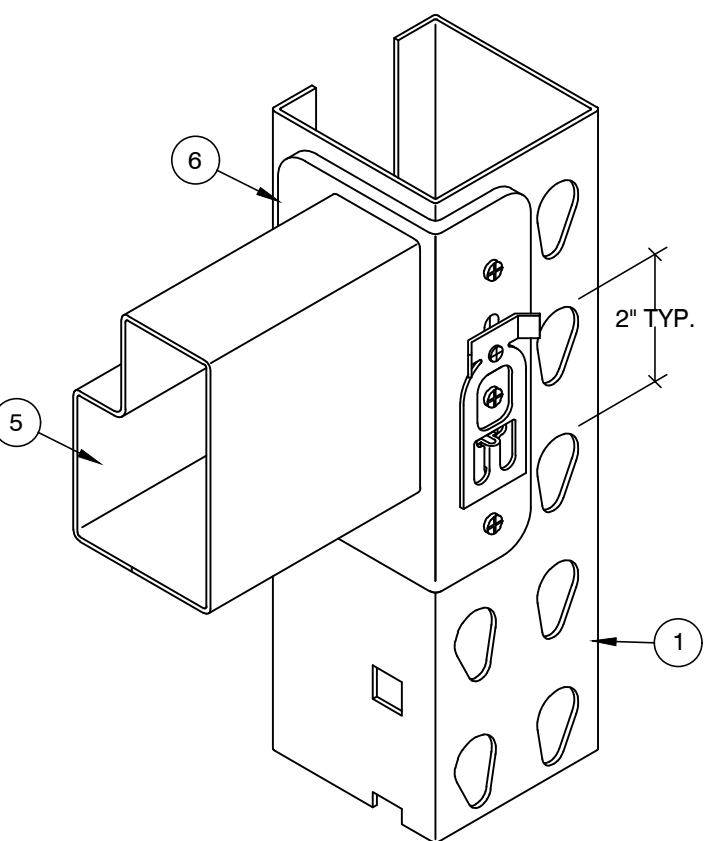
3 ANCHOR



4B HORIZONTAL & DIAGONAL TUBE BRACE



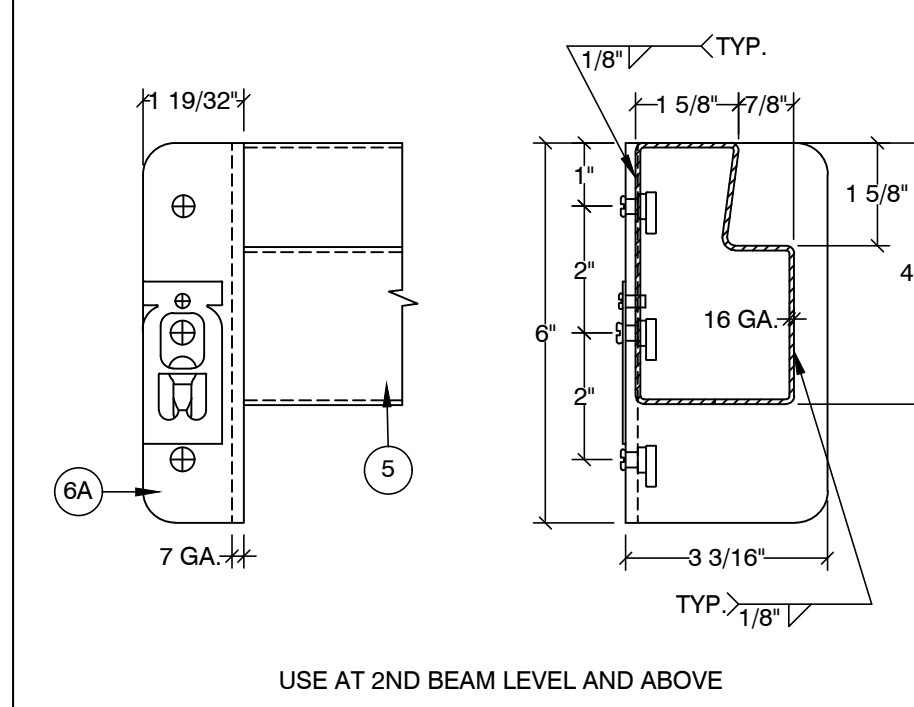
4A HORIZONTAL & DIAGONAL BRACE



6A CONNECTOR

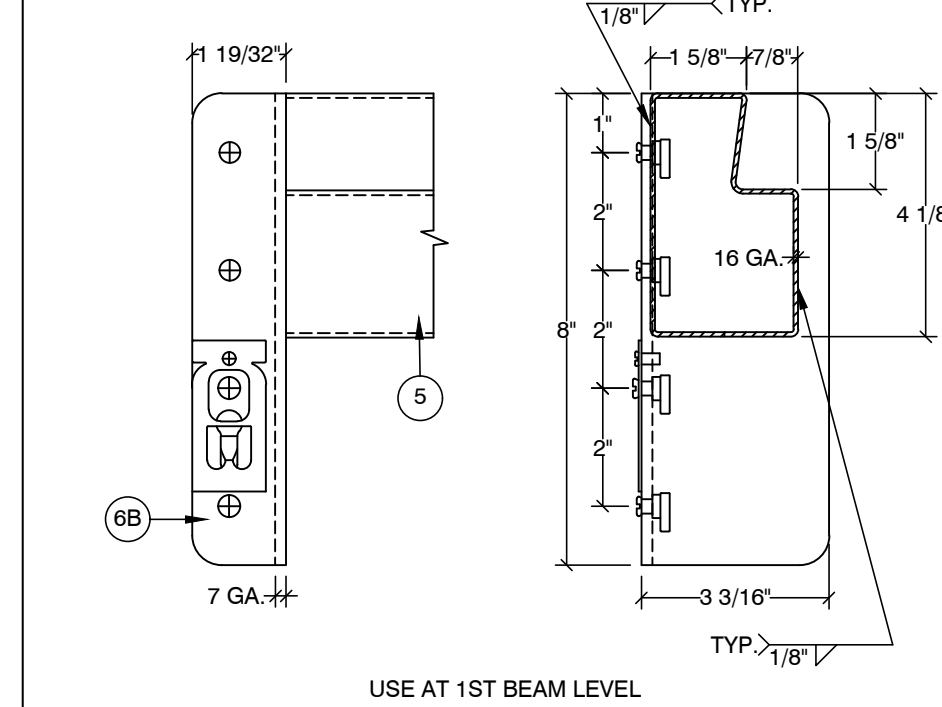
V-B TYPICAL BEAM TO COLUMN CONNECTION

5 BEAM

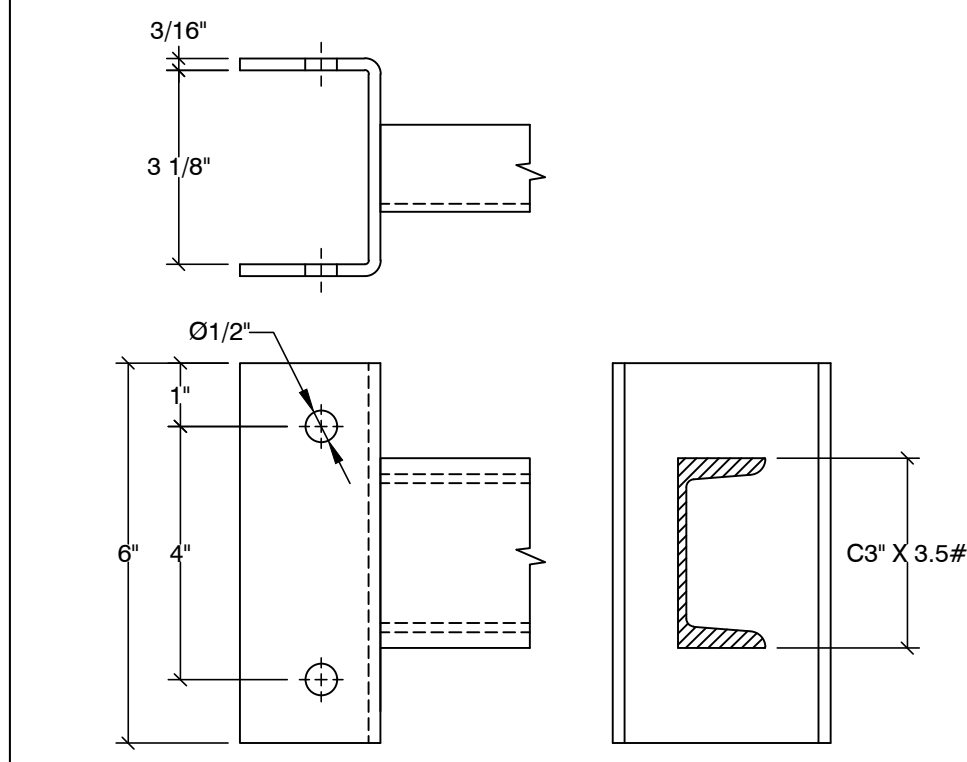


6B CONNECTOR

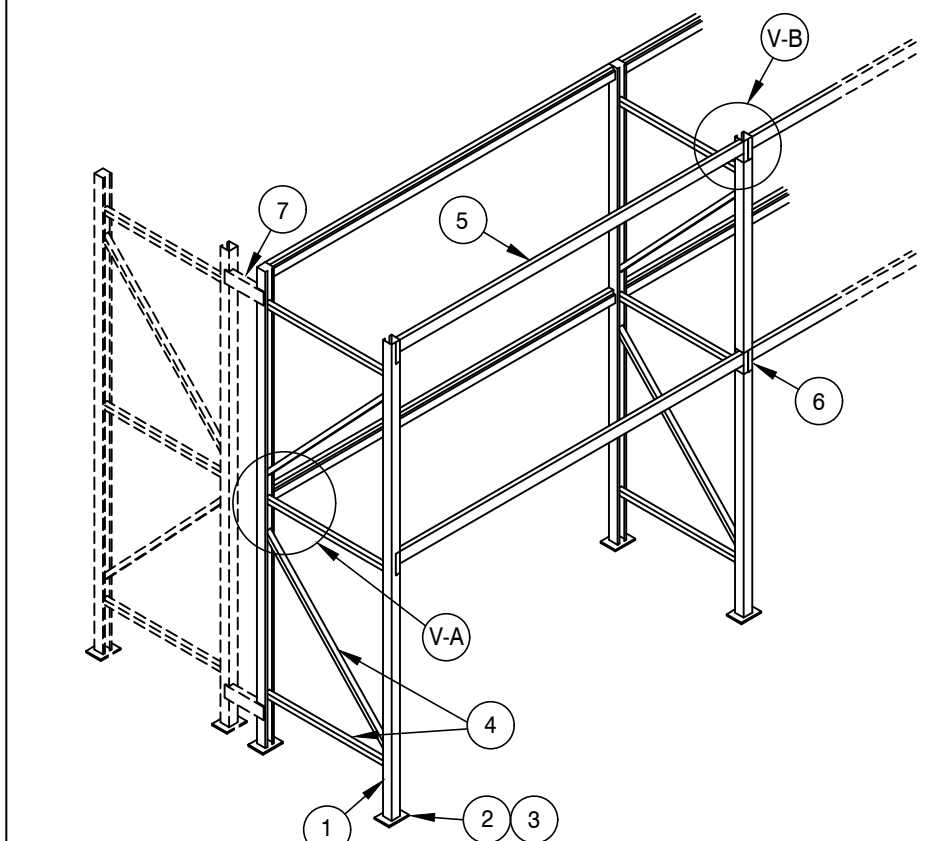
5 BEAM



7 FRAME TIE



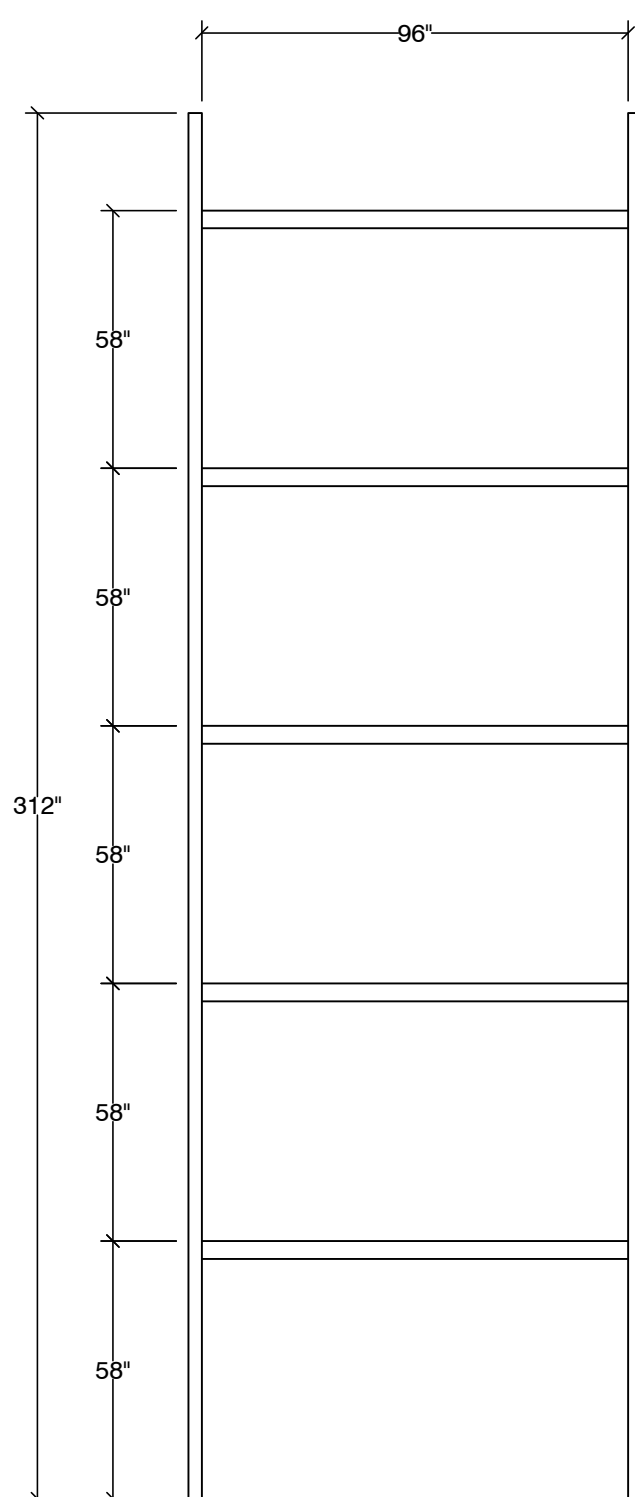
GENERAL CONFIGURATION



- NOTES:**
- DESIGNED PER SECTION 2209 OF THE 2018 IBC.
Fa = 1.2 & Ss = 1.26.
SEISMIC DESIGN CATEGORY: D.
 - STORAGE CAPACITY: 5,000# PER LEVEL.
 - STEEL: ASTM A1011 FOR SHAPE Fy = 55,000 PSI GRADE 55.
 - ALL BOLTS: A307 UNLESS OTHERWISE NOTED.
 - ANCHORS: HILTI KWIK BOLT TZ 2, ICC #ESR-4266.
 - PERIODIC SPECIAL INSPECTION IS REQUIRED DURING ANCHOR INSTALLATION.
 - CONCRETE: 7" THICK x 4,000 PSI.
 - MODULUS OF SUB-GRADE REACTION: 50 PCI. (DISTURBED SOIL: 500 PSF)
 - THE MAXIMUM TOP TO BOTTOM OUT-OF-PLUMB RATIO AND OUT-OF-STRAIGHT RATIO RACK COLUMN IS 1/240 (FOR EXAMPLE 1/2" PER 10 FEET OF HEIGHT), COLUMN WHOSE OUT-OF-PLUMB RATIO OR OUT-OF-STRAIGHT RATIO EXCEEDS THIS LIMIT SHALL BE UNLOADED AND RE-PLUMBED. ANY DAMAGED PARTS MUST BE REPAIRED OR REPLACED.
 - THE OWNER SHALL MAINTAIN THE STRUCTURAL INTEGRITY OF THE RACK SYSTEM BY ASSURING PROPER OPERATIONAL, HOUSE KEEPING, AND MAINTENANCE PROCEDURES, BUT NOT LIMITED TO, THE FOLLOWING:
 - PROHIBIT ANY OVER LOADING OF ANY PALLET POSITIONS AND OF THE OVERALL RACK SYSTEM.
 - REGULARLY INSPECT FOR DAMAGE. IF DAMAGE IS FOUND, IMMEDIATELY UNLOAD THE AFFECTED AREA AND REPLACE OR REPAIR ANY DAMAGED COLUMNS, BEAMS, OR OTHER STRUCTURAL COMPONENTS.
 - REQUIRE ALL PALLETS TO BE MAINTAINED IN GOOD, SAFE OPERATING CONDITION.
 - ENSURE THAT PALLETS ARE PROPERLY PLACED ONTO PALLET LOAD SUPPORT MEMBERS IN PROPERLY STACKED AND STABLE POSITION.
 - REQUIRE THAT ALL GOODS STORED ON EACH PALLET TO BE PROPERLY STACKED AND STABLE.
 - PROHIBIT DOUBLE STACKING OF ANY PALLET POSITION, INCLUDING THE TOP MOST POSITION, UNLESS THE RACK SYSTEM IS SPECIFICALLY DESIGNED FOR SUCH LOADING.
 - ENSURE THAT THE RACKS ARE NOT MODIFIED OR REARRANGED IN A MANNER NOT WITHIN THE ORIGINAL DESIGN CONFIGURATIONS.

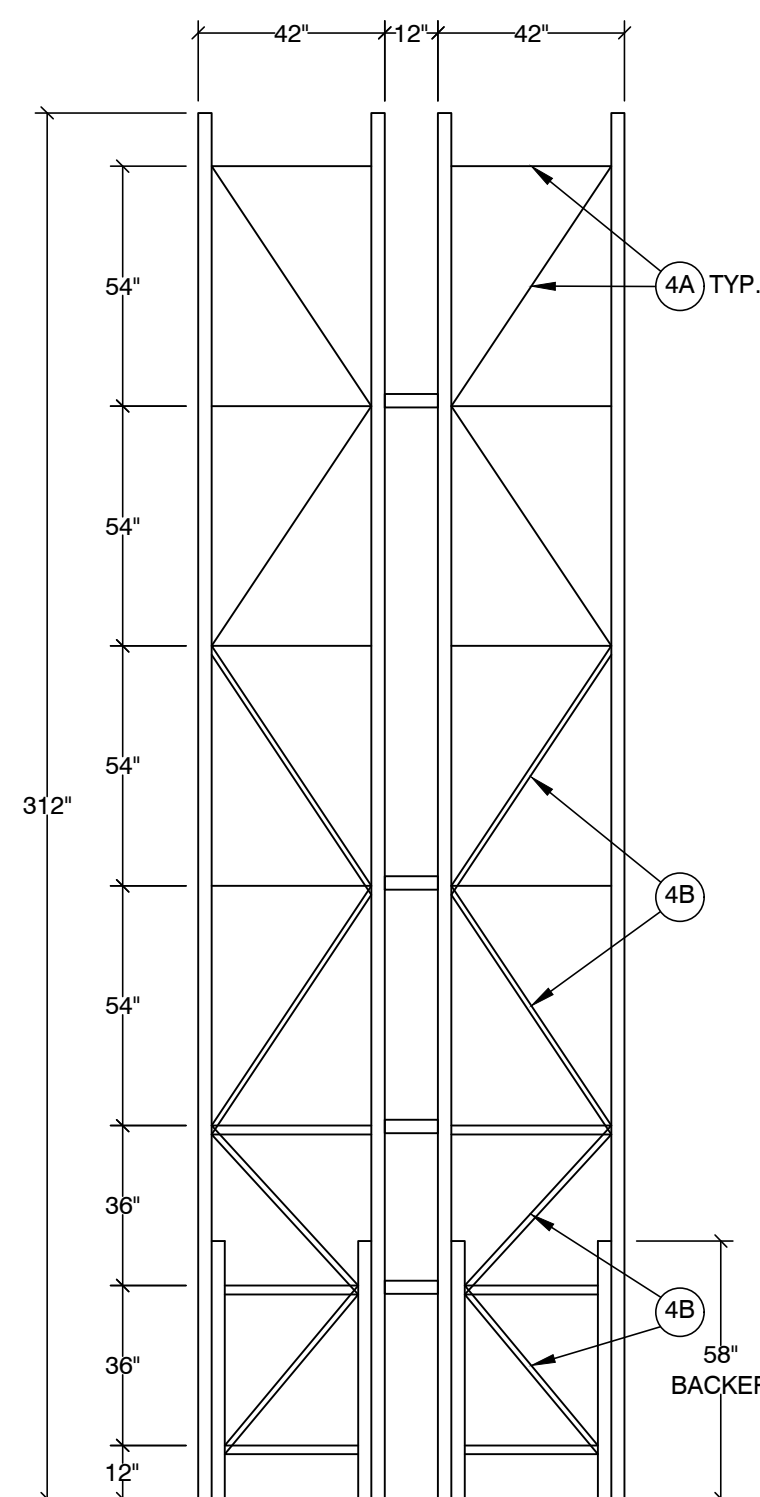
PRCTI20221624

TYPE A



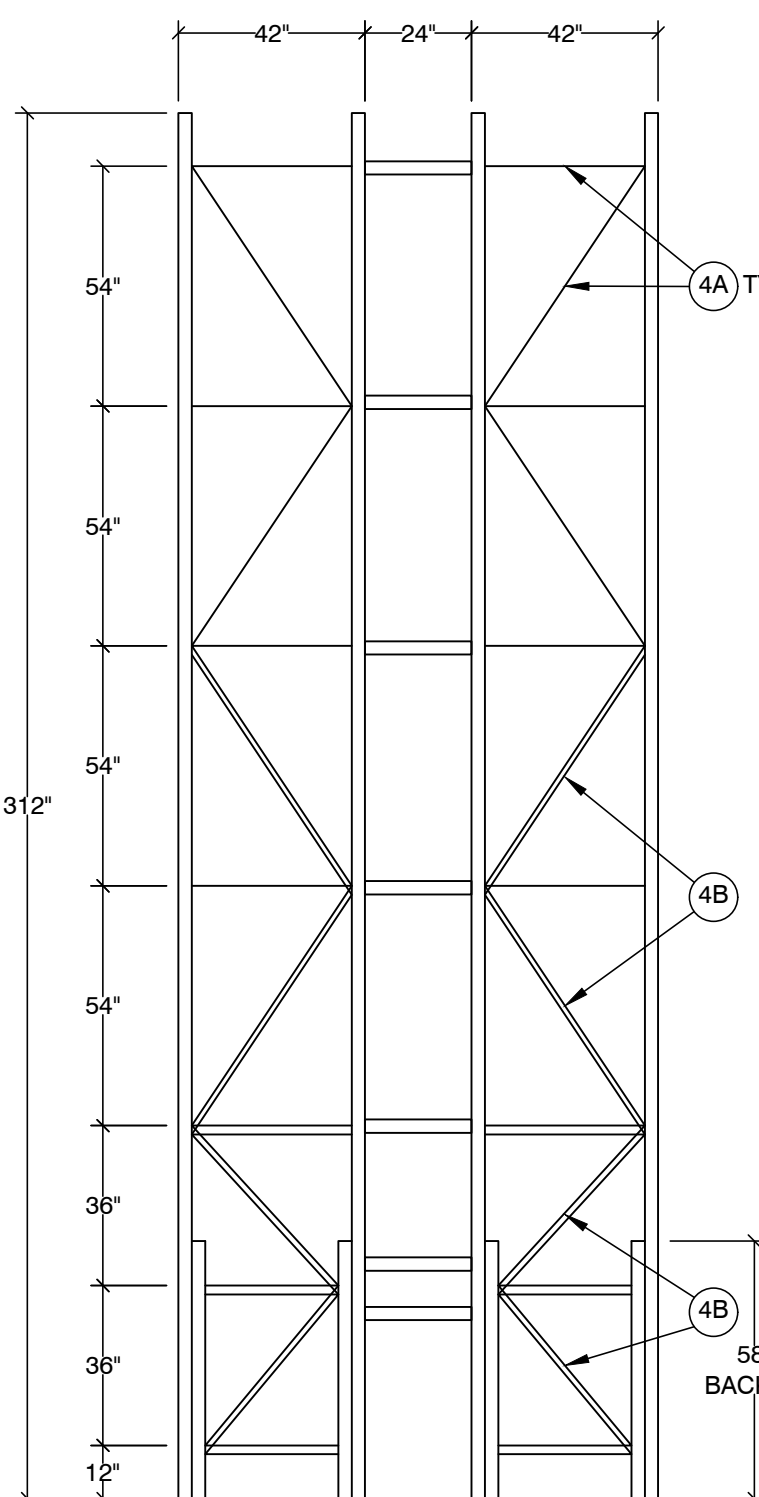
FRONT VIEW

TYPE A1



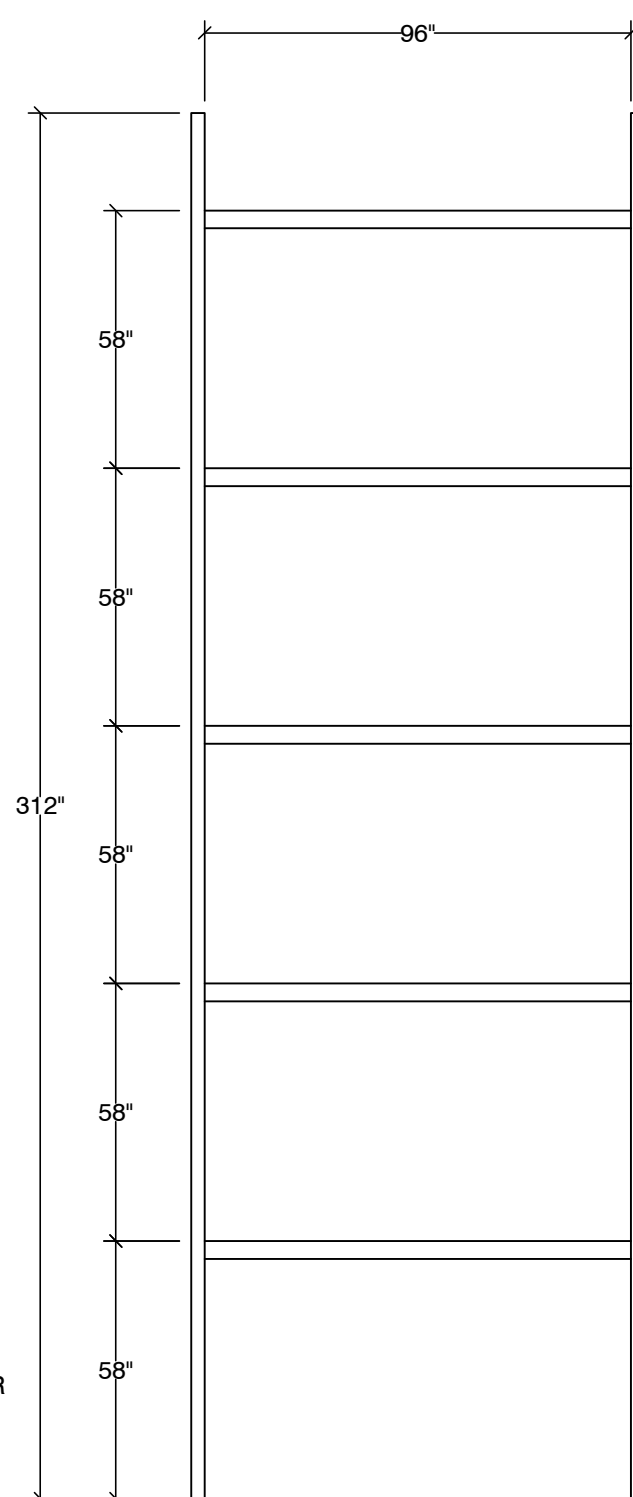
SIDE VIEW

TYPE B



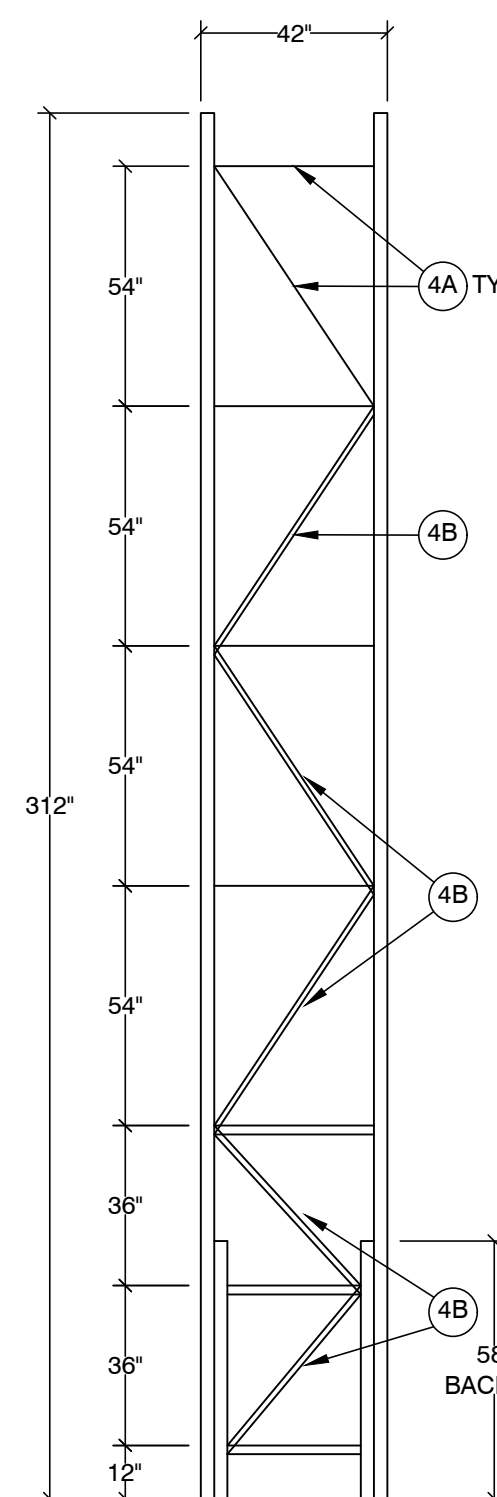
SIDE VIEW

TYPE A1



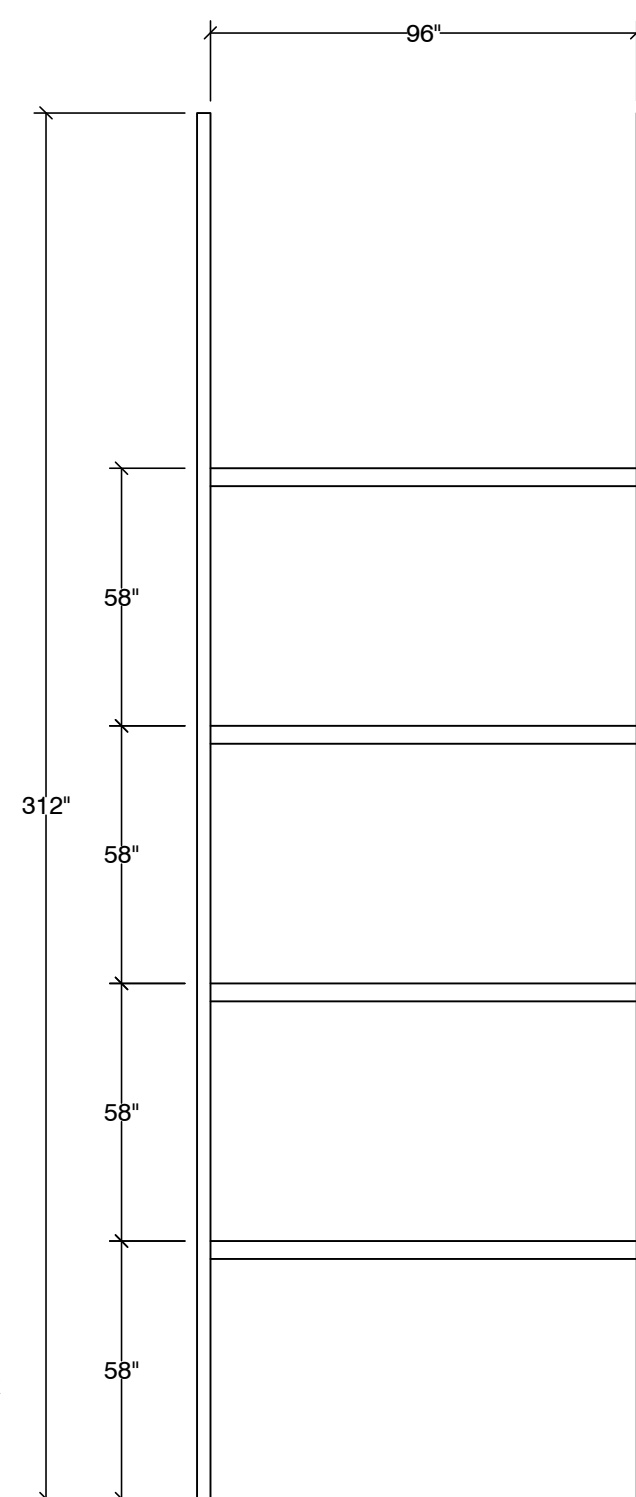
FRONT VIEW

TYPE B



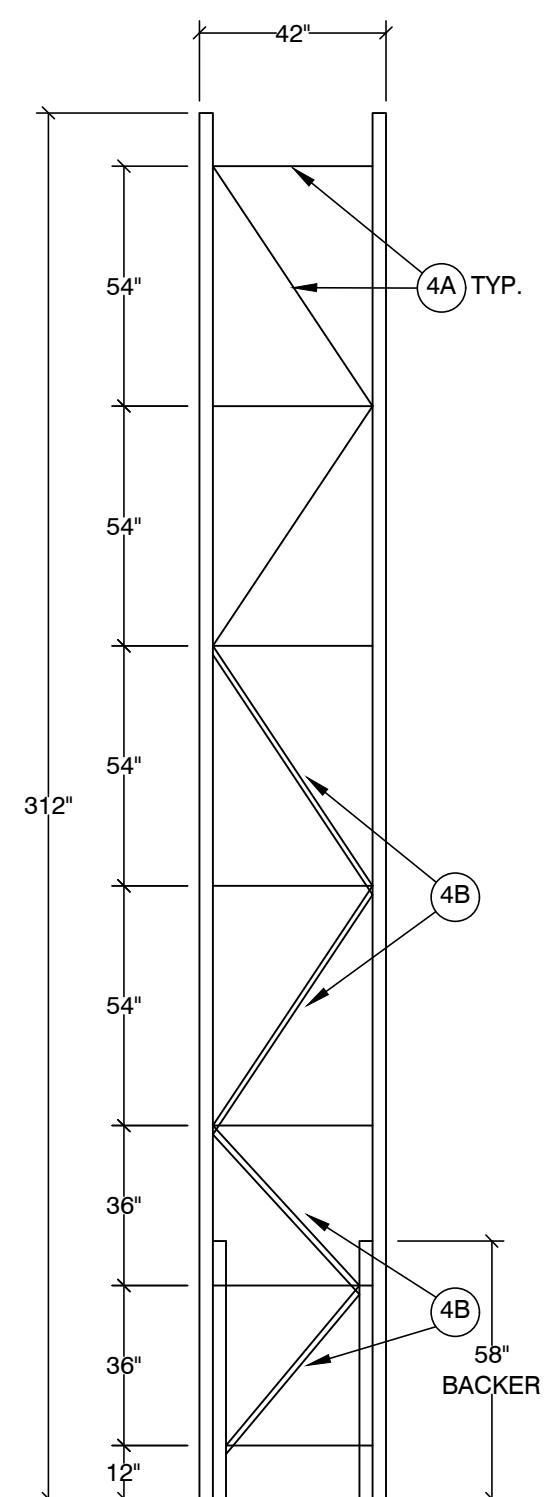
SIDE VIEW

TYPE B



FRONT VIEW

TYPE A1



SIDE VIEW

STORAGE RACK ELEVATIONS

City of Puyallup
Development & Permitting Services
ISSUED PERMIT

Building	Planning
Engineering	Public Works
Fire	Traffic

RED DOT CORP. WA
2504 EAST MAIN AVE
PUYALLUP, WA 98372

ADDRESS:

DESCRIPTION

REV. DATE BY



EST. 1985
SEIZMIC
ENGINEERING, INC.
1130 E. Cypress St.
Covina, California
91724
Tel. (909)869-0989

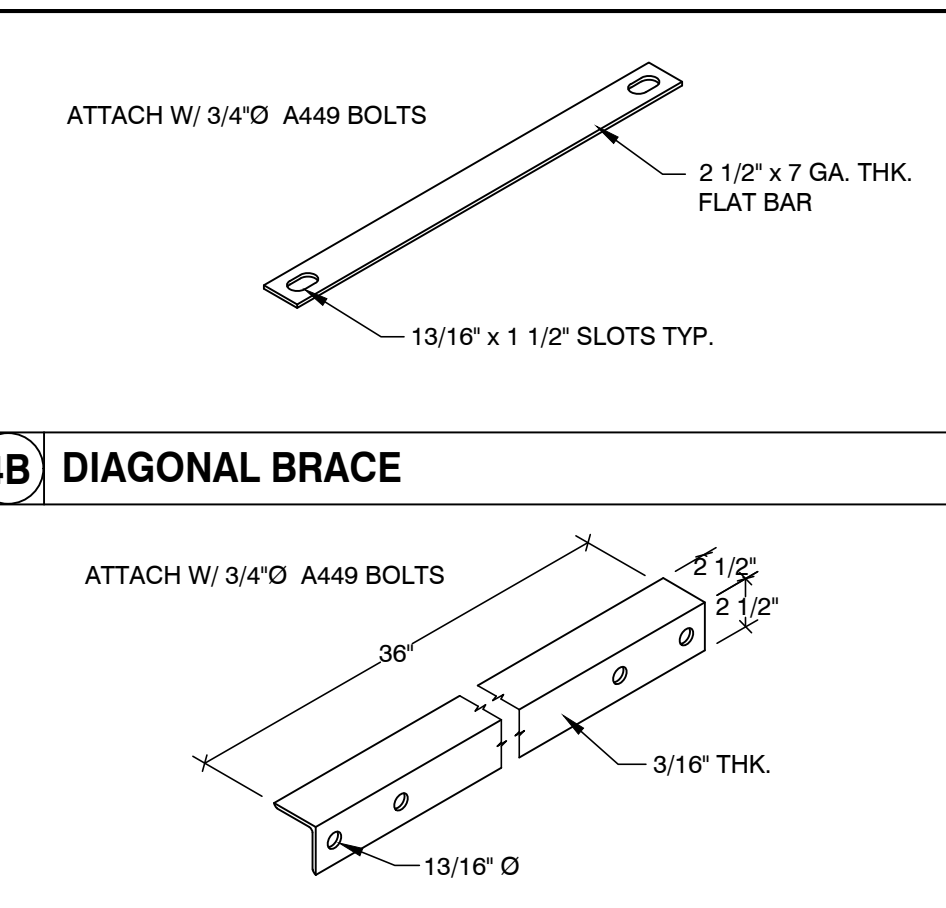
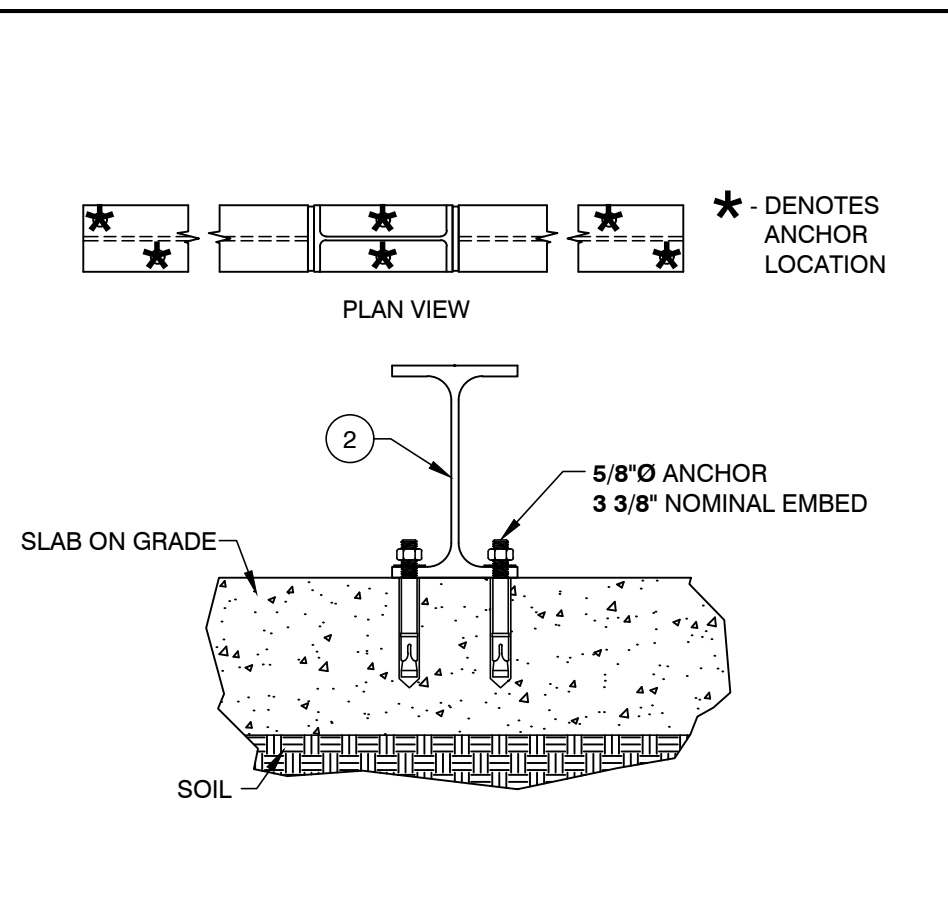
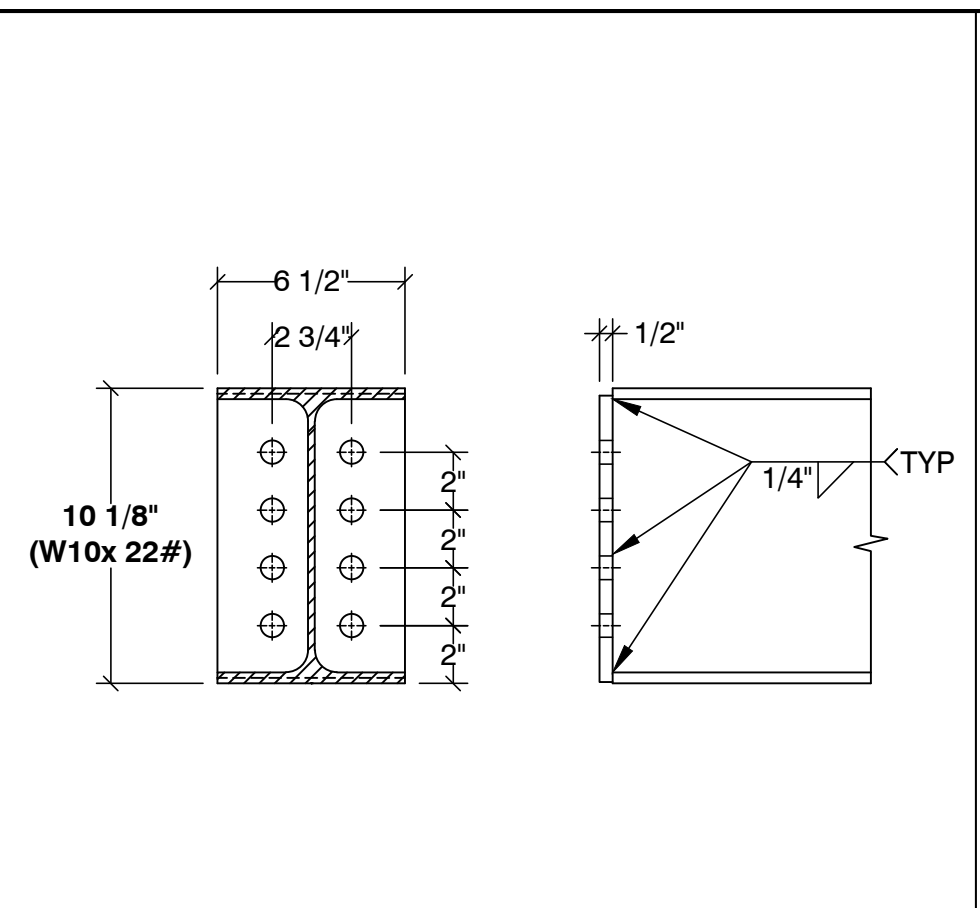
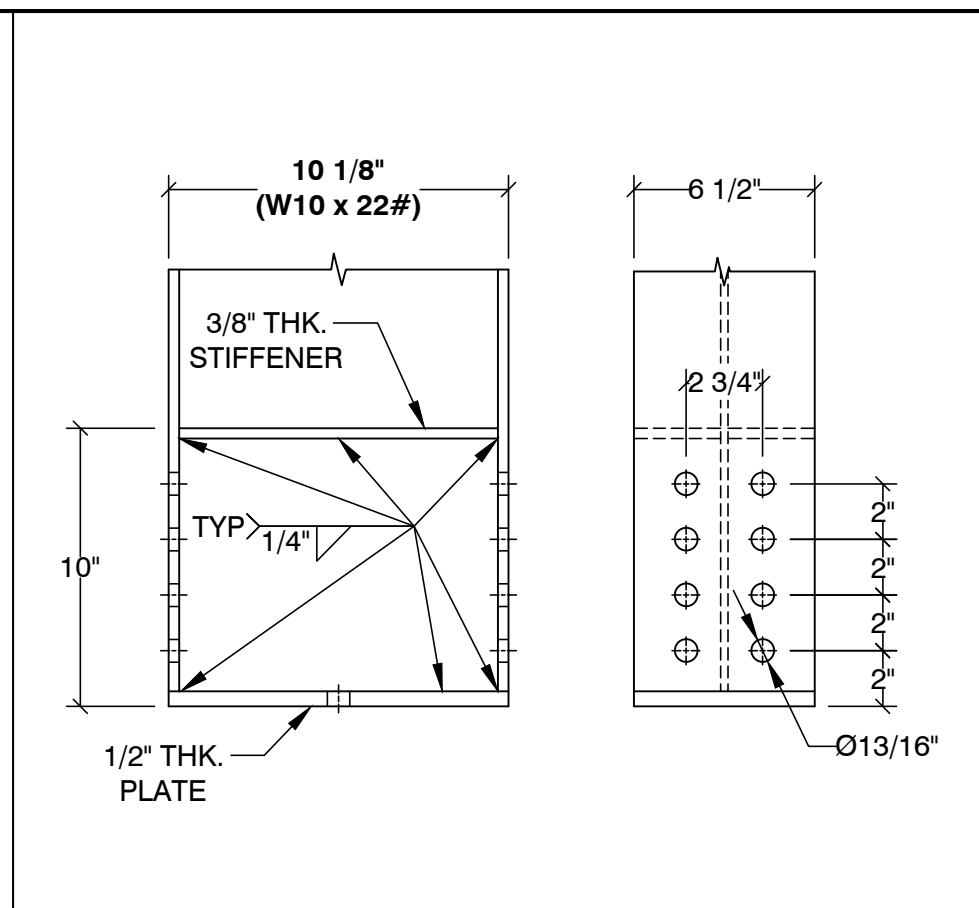
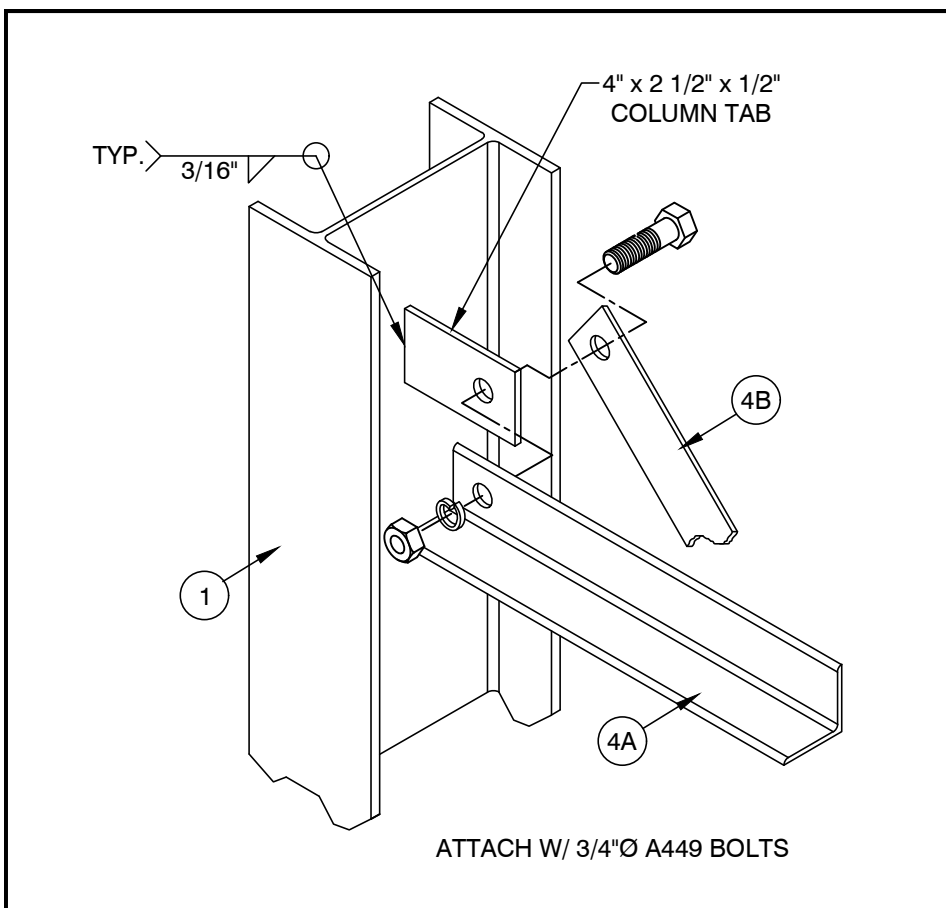
DRAWN BY: B.G. / A.N.
DATE: 10/13/22
LAST REV. BY:
REV. DATE:
TYPE: SPC
SCALE: N.T.S.
APRVD BY: SAL E. FATEEN



EXPIRES
04-12-2024

ISSUED PERMIT
STORAGE
RACK
DETAILS
(22-2726-A)

DRAWING NUMBER
SS7.1



NOTES:
 1. DESIGNED PER SECTION 1613 OF THE 2018 IBC.
 Fa = 1.2 & Ss = 1.26.
 2. STORAGE CAPACITY: 1,750# PER ARM.
 3. STEEL: ASTM A572, Fy = 50,000 PSI GRADE 50.
 4. ALL BOLTS: A307 (UNLESS OTHERWISE NOTED).
 5. ANCHORS: SIMPSON STRONG BOLT 2, ICC #ESR-3037.
 6. PERIODIC SPECIAL INSPECTION IS REQUIRED DURING ANCHOR INSTALLATION.
 7. CONCRETE: 7" THICK x 4,000 PSI.
 8. SOIL BEARING PRESSURE: 1,000 PSF

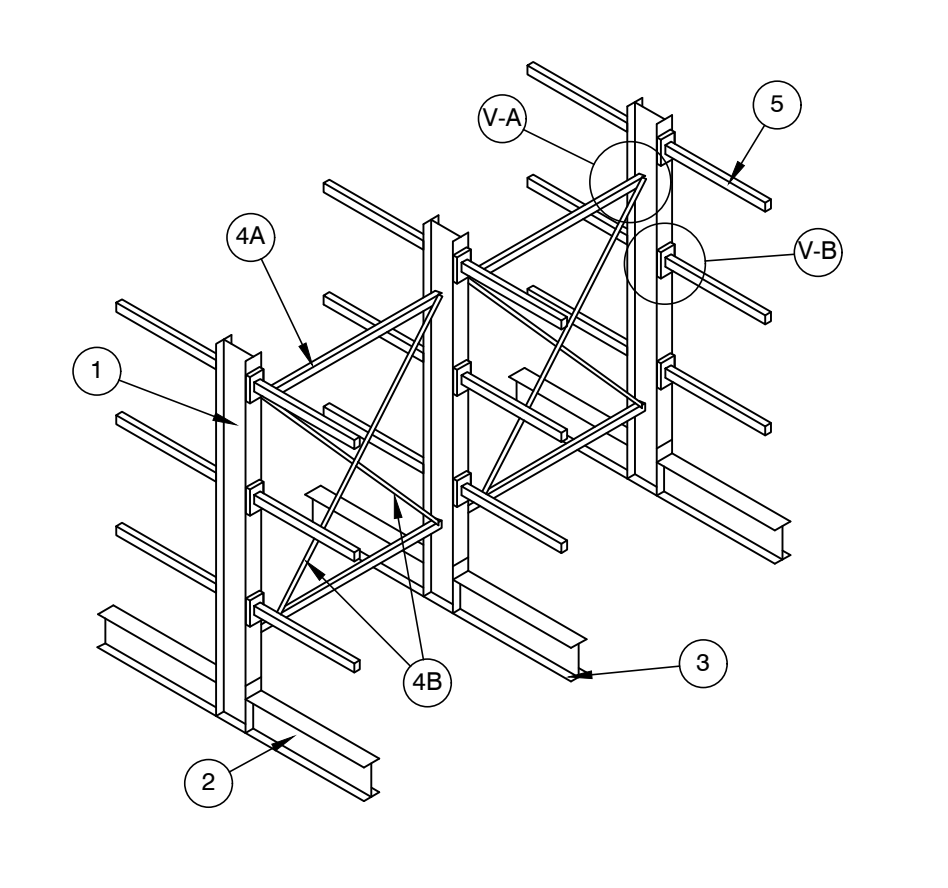
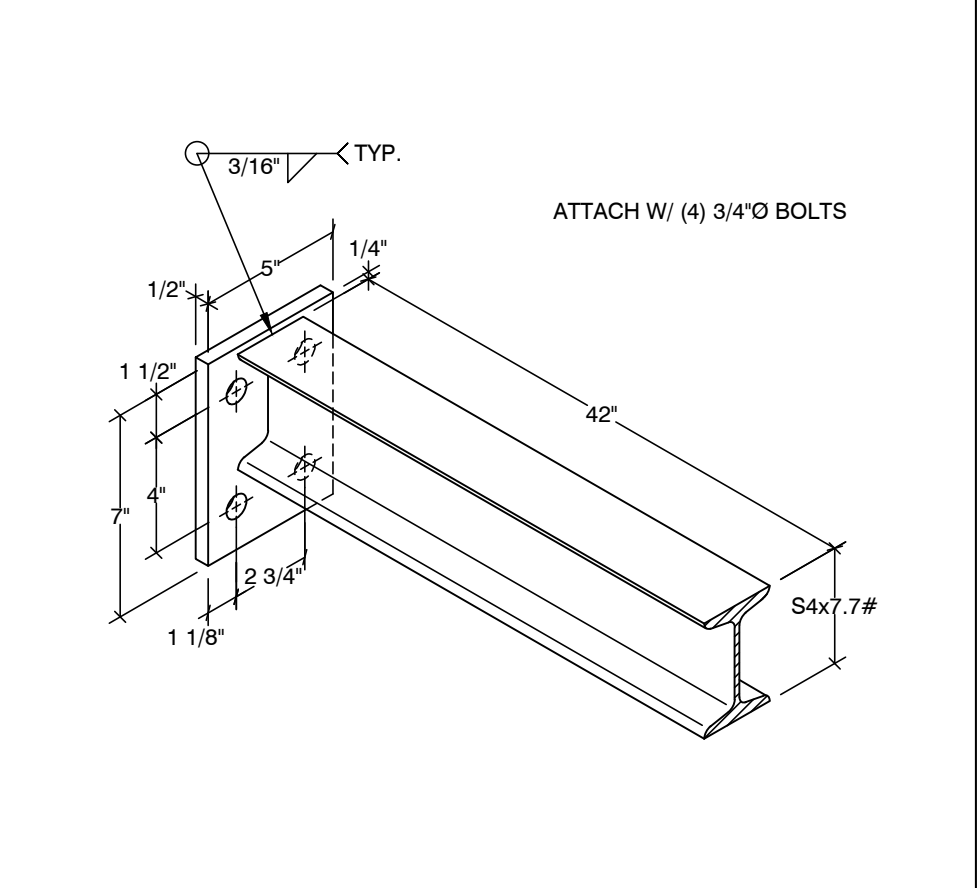
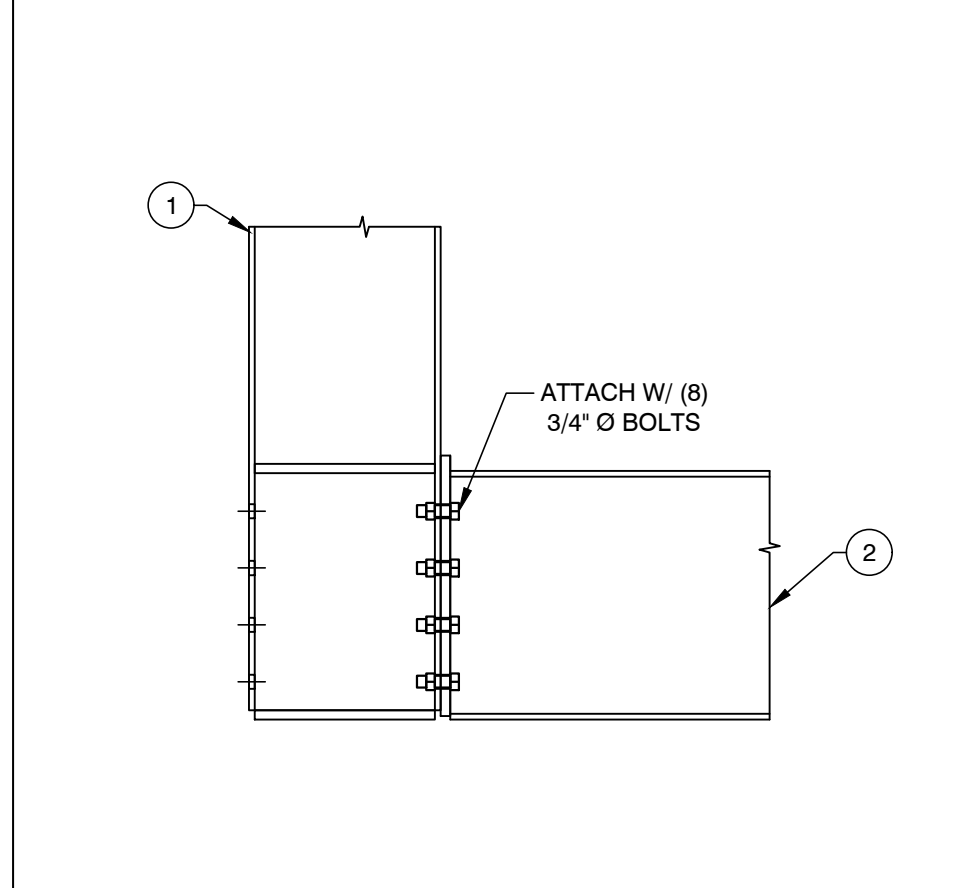
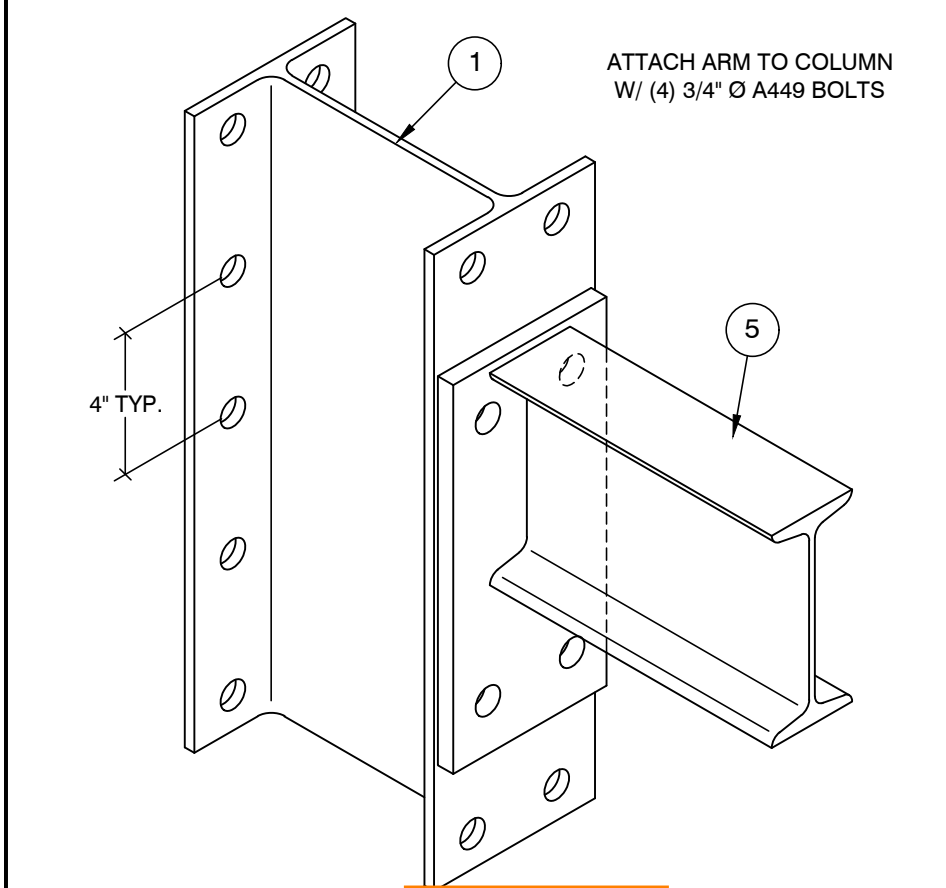
V-A TYPICAL BRACE TO COLUMN CONNECTION

1 COLUMN

2 BASE

3 ANCHOR

4A HORIZONTAL BRACE

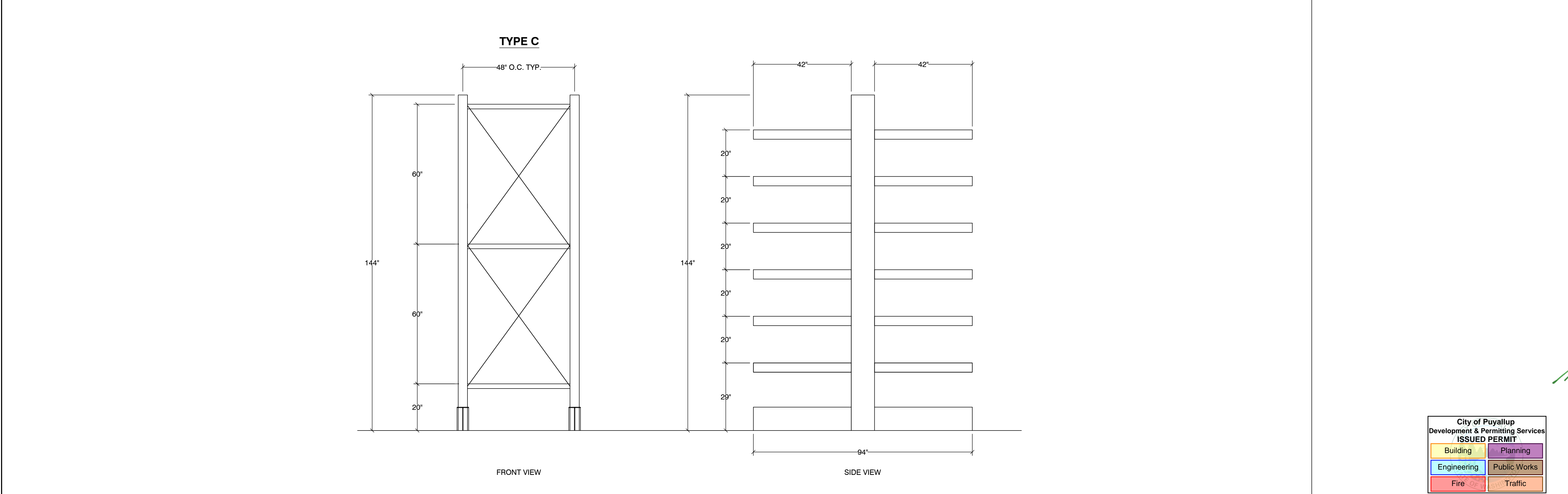


V-B TYPICAL ARM TO COLUMN CONNECTION

V-C TYPICAL BASE TO COLUMN CONNECTION

5 ARM

GENERAL CONFIGURATION



CANTILEVER RACK ELEVATIONS

RED DOT CORP. WA
 2504 EAST MAIN AVE
 PUYALLUP, WA 98372

REV.	DATE	BY	DESCRIPTION

REV.	DATE	BY	DESCRIPTION

SEIZMIC
 EST. 1985
 SEIZMIC ENGINEERING, INC.
 1130 E. Cypress St.
 Covina, California 91724
 Tel. (909)869-0989

DRAWN BY: B.G. / A.N.
 DATE: 10/13/22
 LAST REV BY:
 REV DATE:
 TYPE: HMH
 SCALE: N.T.S.
 APRVD BY: SAL E. FATEEN

SAL E. FATEEN
 PROFESSIONAL ENGINEER
 EXPIRES 04-12-2024

City of Puyallup
 Development & Permitting Services
 ISSUED PERMIT

Building	Planning
Engineering	Public Works
Fire	Traffic

DESCRIPTION:
CANTILEVER RACK DETAILS (22-2726-B)

DRAWING NUMBER:
SS7.2