

Jessica Bruce

From: Bart Brynestad
Sent: Thursday, December 08, 2022 1:59 PM
To: Tina Vaslet
Cc: Matt Whittlesey; Matt Weber; Jessica Bruce; Sheri Greene
Subject: RE: Pierce Transit bus stop - Puyallup 2nd Street Apartments

Great. Thank you for the confirmation.

Bart Brynestad, PE | Project Manager

AHBL, Inc. | TACOMA • SEATTLE • SPOKANE • TRI-CITIES

253.383.2422 **TEL** | 253.284.0228 **DIRECT** | bbrynestad@ahbl.com **EMAIL** | Send us a [file](#).

Career Opportunities available | [Learn more today!](#)

From: Tina Vaslet <tvaslet@piercetransit.org>
Sent: Thursday, December 08, 2022 1:58 PM
To: Bart Brynestad <bbrynestad@AHBL.com>
Cc: Matt Whittlesey <MWhittlesey@AHBL.com>; Matt Weber <Mweber@AHBL.com>; Jessica Bruce <jbruce@AHBL.com>; Sheri Greene <sgreene@AHBL.com>
Subject: [EXTERNAL] RE: Pierce Transit bus stop - Puyallup 2nd Street Apartments

Ok, yeah, that will work. Thanks for clarifying and sorry for the confusion.

Kind Regards,

Tina Vaslet

Planner II – Bus Stops

P: 253.983.2706 | C: 253.255.8521

3701 96th St. SW, Lakewood, WA 98499



From: Bart Brynestad <bbrynestad@AHBL.com>
Sent: Thursday, December 8, 2022 1:54 PM
To: Tina Vaslet <tvaslet@piercetransit.org>
Cc: Matt Whittlesey <MWhittlesey@AHBL.com>; Matt Weber <Mweber@AHBL.com>; Jessica Bruce <jbruce@AHBL.com>; Sheri Greene <sgreene@AHBL.com>
Subject: RE: Pierce Transit bus stop - Puyallup 2nd Street Apartments

Caution: This email originated from outside of Pierce Transit. Do not click links or open attachments unless you recognize the sender and know the content is safe. When in doubt, contact your IT Department.

Correct. They are not raised. They are flush with the sidewalk. Simple ones like the photo below.



Bart Brynestad, PE | Project Manager

AHBL, Inc. | TACOMA • SEATTLE • SPOKANE • TRI-CITIES

253.383.2422 **TEL** | 253.284.0228 **DIRECT** | bbrynestad@ahbl.com **EMAIL** | Send us a [file](#).

Career Opportunities available | [Learn more today!](#)

From: Tina Vaslet <tvaslet@piercetransit.org>

Sent: Thursday, December 08, 2022 1:51 PM

To: Bart Brynestad <bbrynestad@AHBL.com>

Cc: Matt Whittlesey <MWhittlesey@AHBL.com>; Matt Weber <Mweber@AHBL.com>; Jessica Bruce <jbruce@AHBL.com>; Sheri Greene <sgreene@AHBL.com>

Subject: [EXTERNAL] RE: Pierce Transit bus stop - Puyallup 2nd Street Apartments

Sorry, I didn't mean to say they looked flush with the face of the curb, I mean to say flush with the back of the curb. So, they are not raised planters?

Tina Vaslet

Planner II – Bus Stops

P: 253.983.2706 | C: 253.255.8521

3701 96th St. SW, Lakewood, WA 98499



From: Bart Brynestad <bbrynestad@AHBL.com>

Sent: Thursday, December 8, 2022 12:53 PM

To: Tina Vaslet <tvaslet@piercetransit.org>

Cc: Matt Whittlesey <MWhittlesey@AHBL.com>; Matt Weber <Mweber@AHBL.com>; Jessica Bruce <jbruce@AHBL.com>; Sheri Greene <sgreene@AHBL.com>

Subject: RE: Pierce Transit bus stop - Puyallup 2nd Street Apartments

Caution: This email originated from outside of Pierce Transit. Do not click links or open attachments unless you recognize the sender and know the content is safe. When in doubt, contact your IT Department.

Thanks Tina for the quick response. Those are planters behind the curb and they are flush with the sidewalk. They will contain low shrubs. The bus stop is within a travel lane, so I don't think any turning movements will conflict with the planter. Is that what you needed?

Bart Brynestad, PE | Project Manager

AHBL, Inc. | TACOMA • SEATTLE • SPOKANE • TRI-CITIES

253.383.2422 **TEL** | 253.284.0228 **DIRECT** | bbrynestad@ahbl.com **EMAIL** | Send us a [file](#).

Career Opportunities available | [Learn more today!](#)

From: Tina Vaslet <tvaslet@piercettransit.org>

Sent: Thursday, December 08, 2022 12:32 PM

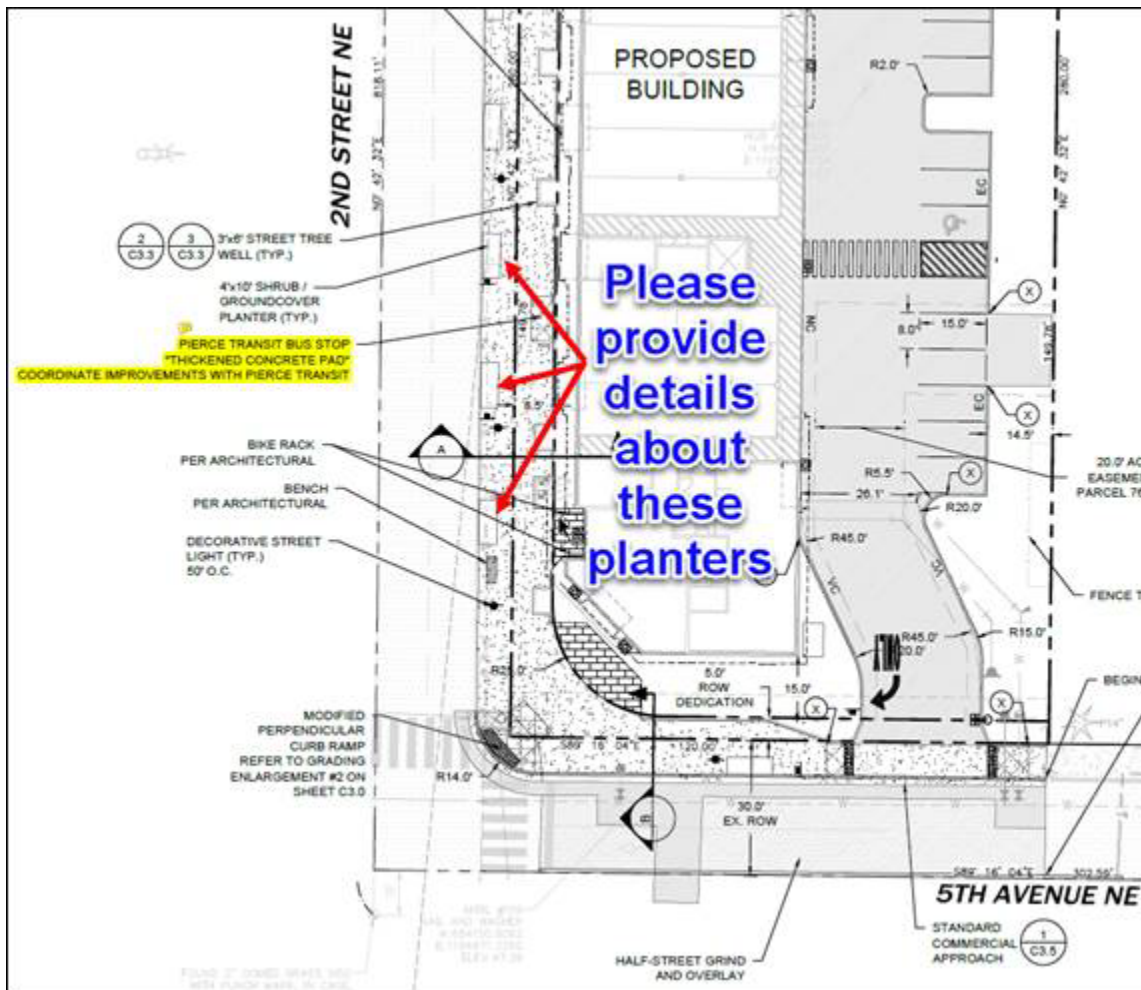
To: Bart Brynestad <bbrynestad@AHBL.com>

Cc: Matt Whittlesey <MWhittlesey@AHBL.com>; Matt Weber <Mweber@AHBL.com>; Jessica Bruce <jbruce@AHBL.com>; Sheri Greene <sgreene@AHBL.com>

Subject: [EXTERNAL] RE: Pierce Transit bus stop - Puyallup 2nd Street Apartments

Hi Bart,

The bus stop location looks good, but please remind me – what are the details of these planter boxes? They look to be flush with face of the curb, which would cause an issue due to the tail swing of the bus and potentially cause an issue with pulling into the stop. Our standard is to have nothing within 2ft of the face of the curb in the bus stop zone. Are they raised planters or are they flush with the sidewalk?



Kind Regards,

Tina

Tina Vaslet

Planner II – Bus Stops

P: 253.983.2706 | C: 253.255.8521

3701 96th St. SW, Lakewood, WA 98499



PT22-006 Bus Stop #250

From: Bart Brynestad <bbrynestad@AHBL.com>

Sent: Thursday, December 8, 2022 11:42 AM

To: Tina Vaslet <tvaslet@piercetransit.org>

Cc: Matt Whittlesey <MWhittlesey@AHBL.com>; Matt Weber <Mweber@AHBL.com>; Jessica Bruce <jbruce@AHBL.com>; Sheri Greene <sgreene@AHBL.com>

Subject: RE: Pierce Transit bus stop - Puyallup 2nd Street Apartments

Caution: This email originated from outside of Pierce Transit. Do not click links or open attachments unless you recognize the sender and know the content is safe. When in doubt, contact your IT Department.

Hi Tina,

I am just checking in on this request. You and I had a few phone calls months ago to coordinate this bus stop, but the city needs your approval in writing (or email). Can you please confirm that the attached bus stop location is acceptable.

Bart Brynestad, PE | Project Manager

AHBL, Inc. | **TACOMA** • SEATTLE • SPOKANE • TRI-CITIES

253.383.2422 **TEL** | 253.284.0228 **DIRECT** | bbrynestad@ahbl.com **EMAIL** | Send us a [file](#).

Career Opportunities available | [Learn more today!](#)

From: Sheri Greene <sgreene@AHBL.com>

Sent: Thursday, October 20, 2022 2:06 PM

To: tvaslet@piercettransit.org

Cc: Bart Brynestad <bbrynestad@AHBL.com>; Matt Whittlesey <MWhittlesey@AHBL.com>; Matt Weber <Mweber@AHBL.com>; Jessica Bruce <jbruce@AHBL.com>

Subject: Pierce Transit bus stop - Puyallup 2nd Street Apartments

Hi Tina – The City of Puyallup asked that we reach out to you regarding the new bus stop location we are proposing at the corner of 2nd Street NE and 5th Avenue NE. Attached is a site plan showing the location we are proposing. Can you let me know if this location is acceptable?

Thanks,

Sheri Greene | Assistant Project Manager

AHBL, Inc. | **TACOMA** • SEATTLE • SPOKANE • TRI-CITIES

253.383.2422 **TEL** | 253.284.0212 **DIRECT** | sgreene@ahbl.com **EMAIL**

Civil Engineers • Structural Engineers • Landscape Architects • Community Planners • Land Surveyors

Visit us at www.ahbl.com. | Follow us on [LinkedIn](#) and [Facebook](#). | Send us a [file](#).

Career Opportunities available | [Learn more today!](#)